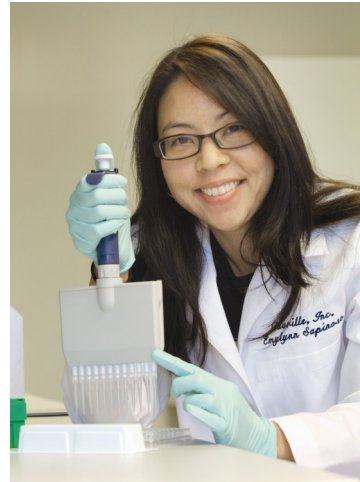


2010



Fact Book

Miramar College



Prepared by:
Office of Institutional Research and Planning
September 2010

Miramar College Fact Book 2010: Table of Contents

Overview	1	By Gender.....	35
Section I. Headcount and Student Characteristics	2	By Ethnicity.....	36
Section Overview	3	By Age.....	37
Overall	4	Annual GPA	
Gender	5	Overall	38
Ethnicity	6	By Gender.....	39
Age	7	By Ethnicity.....	40
Enrollment Status.....	8	By Age.....	41
Educational Objective.....	9	Annual Awards Conferred	
Primary Language	11	Overall	42
Prior Education Level.....	12	By Gender.....	43
Service Area of Residence.....	13	By Ethnicity.....	46
Units Attempted by Units Earned	14	By Age.....	50
First Generation.....	16	Annual Transfer	
Income Level.....	17	Overall	53
DSPS.....	18	By Gender.....	54
EOPS	19	By Ethnicity.....	55
Section II. Fall to Spring Term Persistence Rates	20	By Age.....	56
Section Overview	21	CSU-UC/Private/Out-of-State	57
Overall	22	CSU/UC	58
By Gender.....	23	Institution Type (Private vs. Public).....	59
By Ethnicity.....	24	Section IV. Productivity and Efficiency	60
By Age.....	26	Section Overview	61
Section III. Student Outcomes	28	Annual FTES.....	62
Section Overview	29	Enrollments: Online and On Campus.....	63
Annual Success Rates		Fill Rates	64
Overall	30	Load	66
By Gender.....	31	Section V. Human Resources	67
By Ethnicity.....	32	Section Overview	68
By Age.....	33	Fall 2009 Employees by Gender and Ethnicity	69
Annual Retention Rates		Section VI. Concluding Remarks	71
Overall	34		

Miramar College Fact Book 2010: Overview

This Fact Book is a publication of the Office of Institutional Research and Planning for the San Diego Community College District. It is designed to serve the information needs of the college community with a primary focus on student enrollment, demographics, and outcomes.

The Fact Book is a rich source of collegewide trend information that may be used for planning and decision making. The book contains the following five sections:

- 1) **Headcount and Student Characteristics.** Provides information on student demographic characteristics (e.g., age, ethnicity, and educational objective) over five years.
- 2) **Term Persistence Rates.** Provides information about first-time to college students who complete a fall term and enroll in the subsequent spring term. The information is also reported by demographic characteristics of interest.
- 3) **Student Outcomes.** Provides information on students' successful course completion rates, retention rates, GPA, awards conferred, and transfer volume. All of the information is provided in summary form, as well demographic characteristics of interest.
- 4) **Productivity and Efficiency.** Provides information on annual FTES, enrollment and fill rates, and Load (WSCH/FTEF).
- 5) **Human Resources.** Provides information on the number of employees by ethnicity, gender, and employee classification.

Each section contains the following benchmarks: 1) The percentage change over the five year period being reported, 2) The collegewide average and 3) The "All Colleges" in the district averages (excludes Continuing Education).

Section I
Headcount & Student Characteristics

Miramar College Section I: Headcount and Student Characteristics

This section of the Fact Book contains student headcount by various student characteristics. The headcount figures are single student counts (unduplicated headcount) based on official census counts at the end of the semester (all students who dropped or never attended prior to the class census date were not included). The headcount information is reported over a period of five years to analyze trends and establish benchmarks.

Headcount information is reported by the following segments:

- 1) Overall
- 2) Gender
- 3) Ethnicity
- 4) Age
- 5) Educational Objective
- 6) Enrollment Status
- 7) Primary Language
- 8) Prior Education Level
- 9) Service Area of Residence
- 10) Units Attempted by Units Earned
- 11) First Generation
- 12) Income Level
- 13) DSPS
- 14) EOPS

Miramar College Section I: Headcount and Student Characteristics

Overall Headcount: Unduplicated student headcount for Miramar College showed a 7% increase, from 11,242 in Fall 2005 to 12,030 in Fall 2009. In particular, there was a decline in the Miramar student headcount population in Fall 2006 and then subsequently increased between Fall 2007 and Fall 2009. Unduplicated student headcount for Miramar College showed a 19% increase, from 5,637 in Summer 2005 to 6,720 in Summer 2009. Finally, unduplicated student headcount for Miramar College showed a 5% increase between Spring 2006 and Spring 2010.

Figure 1.1. Miramar College Overall Headcount (Fall)

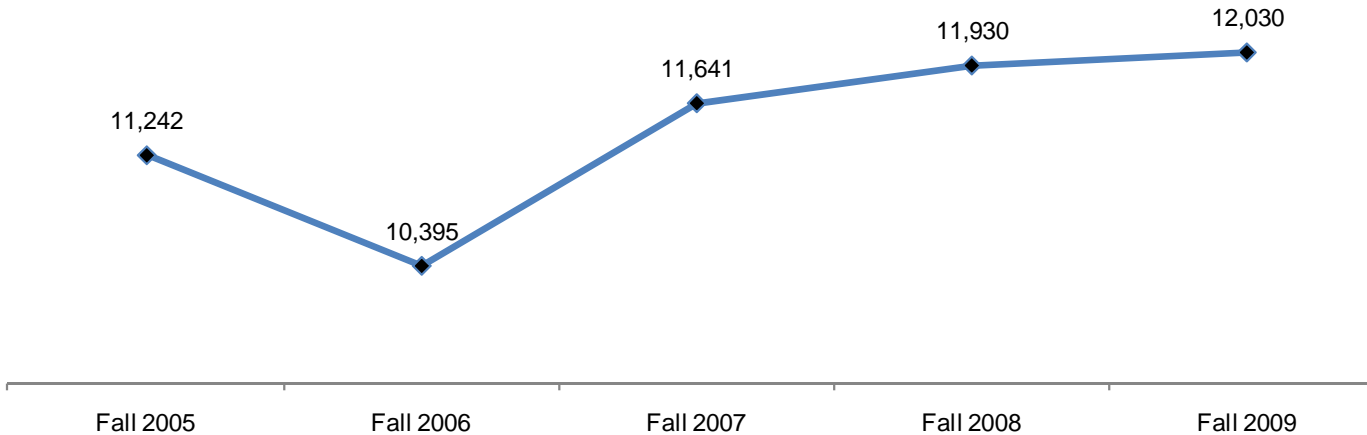


Table 1.1.1. Miramar College Overall Headcount (Summer)

	Summer 2005	Summer 2006	Summer 2007	Summer 2008	Summer 2009	% Change Summer 05-09
Total	5,637	6,584	7,726	6,813	6,720	19%

Source: SDCCD Information System

Table 1.1.2. Miramar College Overall Headcount (Fall)

	Fall 2005	Fall 2006	Fall 2007	Fall 2008	Fall 2009	% Change Fall 05-09
Total	11,242	10,395	11,641	11,930	12,030	7%

Source: SDCCD Information System

Table 1.1.3. Miramar College Overall Headcount (Spring)

	Spring 2006	Spring 2007	Spring 2008	Spring 2009	Spring 2010	% Change Spring 06-10
Total	11,879	12,937	12,434	13,114	12,464	5%

Source: SDCCD Information System

Miramar College Section I: Headcount and Student Characteristics

Headcount by Gender: On average, the male student headcount (55%) was higher than their female student counterpart (45%), which has remained fairly consistent between Fall 2005 and Fall 2009. Both male and female student headcounts increased between Fall 2005 to Fall 2009, which paralleled the overall student population trend.

Figure 1.2. Miramar College Headcount by Gender

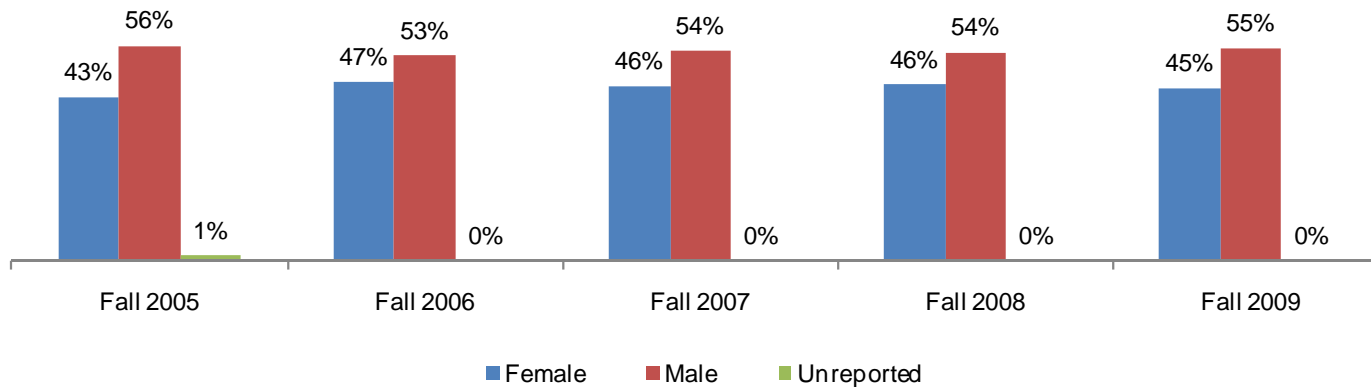


Table 1.2. Miramar College Headcount by Gender

	Fall 2005		Fall 2006		Fall 2007		Fall 2008		Fall 2009		% Change Fall 05-09	College Average Fall 05-09	All Colleges Average Fall 05-09
Female	4,790	43%	4,838	47%	5,299	46%	5,453	46%	5,397	45%	13%	45%	51%
Male	6,284	56%	5,538	53%	6,329	54%	6,469	54%	6,631	55%	6%	55%	48%
Unreported	168	1%	19	0%	13	0%	8	0%	2	0%	-99%	0%	0%
Total	11,242	100%	10,395	100%	11,641	100%	11,930	100%	12,030	100%	7%	100%	100%

Source: SDCCD Information System

Miramar College Section I: Headcount and Student Characteristics

Headcount by Ethnicity: The ethnic groups that comprised the largest headcounts between Fall 2005 and Fall 2009 were White students (41%), Asian/Pacific Islander students (15%), and Latino students (15%) on average. At Miramar College, the Latino student population increased 28%. In contrast, the Filipino student population declined 9% between Fall 2005 and Fall 2009. Both the Latino and African American student headcounts at Miramar College (15% & 5%, respectively) were underrepresented compared to the Latino and African American student headcounts (23% & 8%, respectively) for all colleges in the district. However, Asian/Pacific Islander, Filipino, and White student headcounts at Miramar College (15%, 10%, & 41%, respectively) were overrepresented compared to the same ethnic groups for all colleges in the district (12%, 6%, & 37%, respectively).

Figure 1.3. Miramar College Headcount by Ethnicity

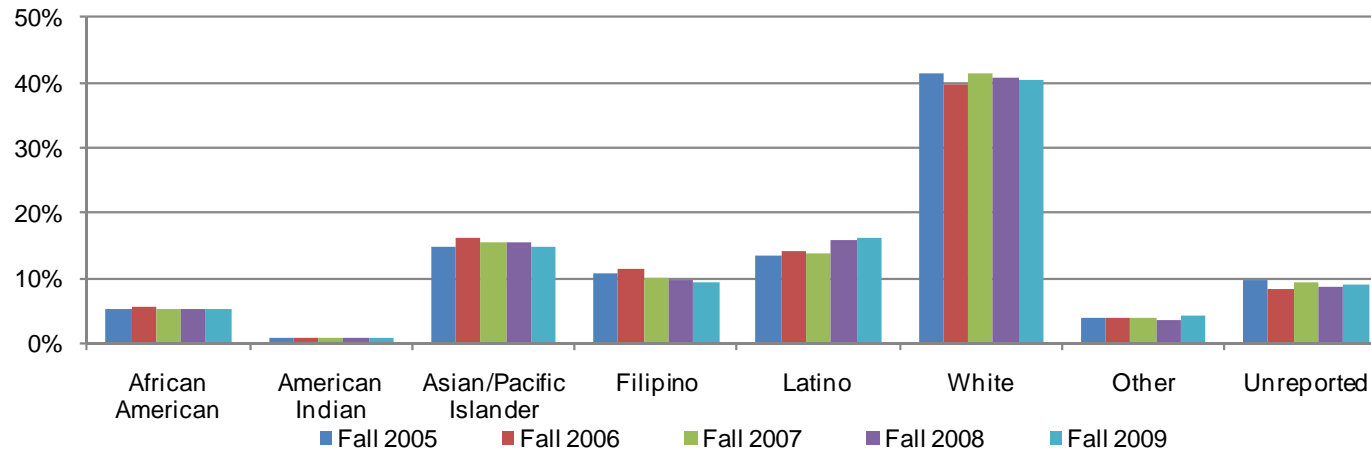


Table 1.3. Miramar College Headcount by Ethnicity

	Fall 2005		Fall 2006		Fall 2007		Fall 2008		Fall 2009		% Change Fall 05-09	College Average Fall 05-09	All Colleges Average Fall 05-09
African American	595	5%	577	6%	612	5%	638	5%	645	5%	8%	5%	8%
American Indian	99	1%	90	1%	94	1%	104	1%	102	1%	3%	1%	1%
Asian/Pacific Islander	1,652	15%	1,686	16%	1,787	15%	1,859	16%	1,786	15%	8%	15%	12%
Filipino	1,221	11%	1,181	11%	1,170	10%	1,151	10%	1,109	9%	-9%	10%	6%
Latino	1,510	13%	1,471	14%	1,621	14%	1,879	16%	1,926	16%	28%	15%	23%
White	4,661	41%	4,124	40%	4,828	41%	4,852	41%	4,864	40%	4%	41%	37%
Other	421	4%	401	4%	434	4%	409	3%	495	4%	18%	4%	3%
Unreported	1,083	10%	865	8%	1,095	9%	1,038	9%	1,103	9%	2%	9%	9%
Total	11,242	100%	10,395	100%	11,641	100%	11,930	100%	12,030	100%	7%	100%	100%

Source: SDCCD Information System

Miramar College Section I: Headcount and Student Characteristics

Headcount by Age: Students who were between ages 18-24, on average, constituted almost half of the Miramar student population (48%). Of the total Miramar student population, students between ages 25-29 years old increased 27%, from 1,790 in Fall 2005 to 2,280 in Fall 2009. However students who were between ages 40-49 and 50 years and older displayed a decreased trend in headcount (13% & 1%, respectively). Student headcount for those who were between ages 18-24 years old displayed the greatest disparity at Miramar College when compared to the student headcount of the same age group for all colleges in the district (48% & 53%, respectively).

Figure 1.4. Miramar College Headcount by Age

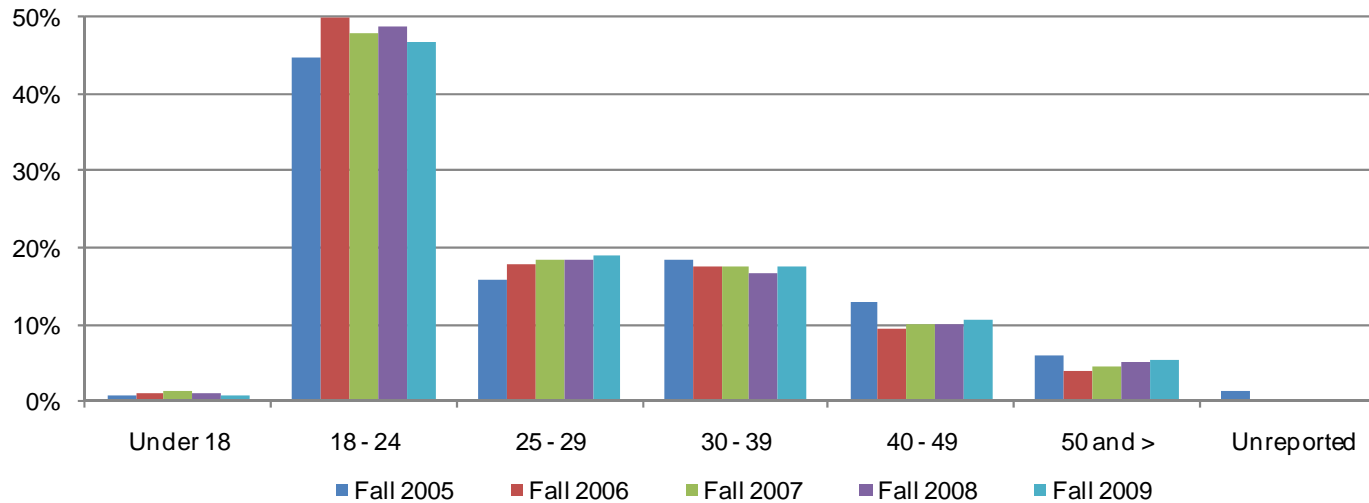


Table 1.4. Miramar College Headcount by Age

	Fall 2005		Fall 2006		Fall 2007		Fall 2008		Fall 2009		% Change Fall 05-09	College Average Fall 05-09	All Colleges Average Fall 05-09
Under 18	88	1%	109	1%	162	1%	146	1%	92	1%	5%	1%	3%
18 - 24	5,031	45%	5,201	50%	5,587	48%	5,808	49%	5,628	47%	12%	48%	53%
25 - 29	1,790	16%	1,858	18%	2,136	18%	2,183	18%	2,280	19%	27%	18%	17%
30 - 39	2,067	18%	1,816	17%	2,042	18%	2,001	17%	2,108	18%	2%	18%	14%
40 - 49	1,445	13%	978	9%	1,165	10%	1,184	10%	1,263	10%	-13%	11%	8%
50 and >	667	6%	420	4%	543	5%	605	5%	659	5%	-1%	5%	5%
Unreported	154	1%	13	0%	6	0%	3	0%	0	0%	-100%	0%	0%
Total	11,242	100%	10,395	100%	11,641	100%	11,930	100%	12,030	100%	7%	100%	100%

Source: SDCCD Information System

Miramar College Section I: Headcount and Student Characteristics

Headcount by Enrollment Status: On average, 64% of the student population comprised continuing students. The number of returning transfer students declined 11%, from 1,025 in Fall 2005 to 915 in Fall 2009. However, the number of returning students who were enrolled at Miramar College increased 55%, from 590 in Fall 2005 to 913 in Fall 2009.

Figure 1.5. Miramar College Headcount by Enrollment Status

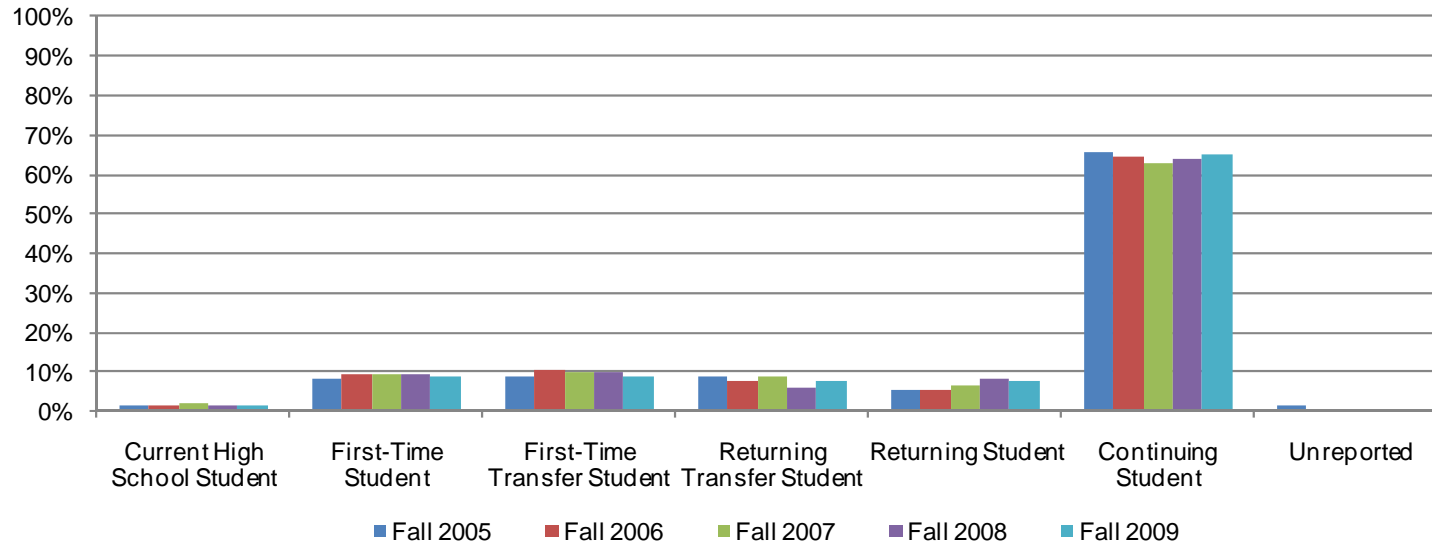


Table 1.5. Miramar College Headcount by Enrollment Status

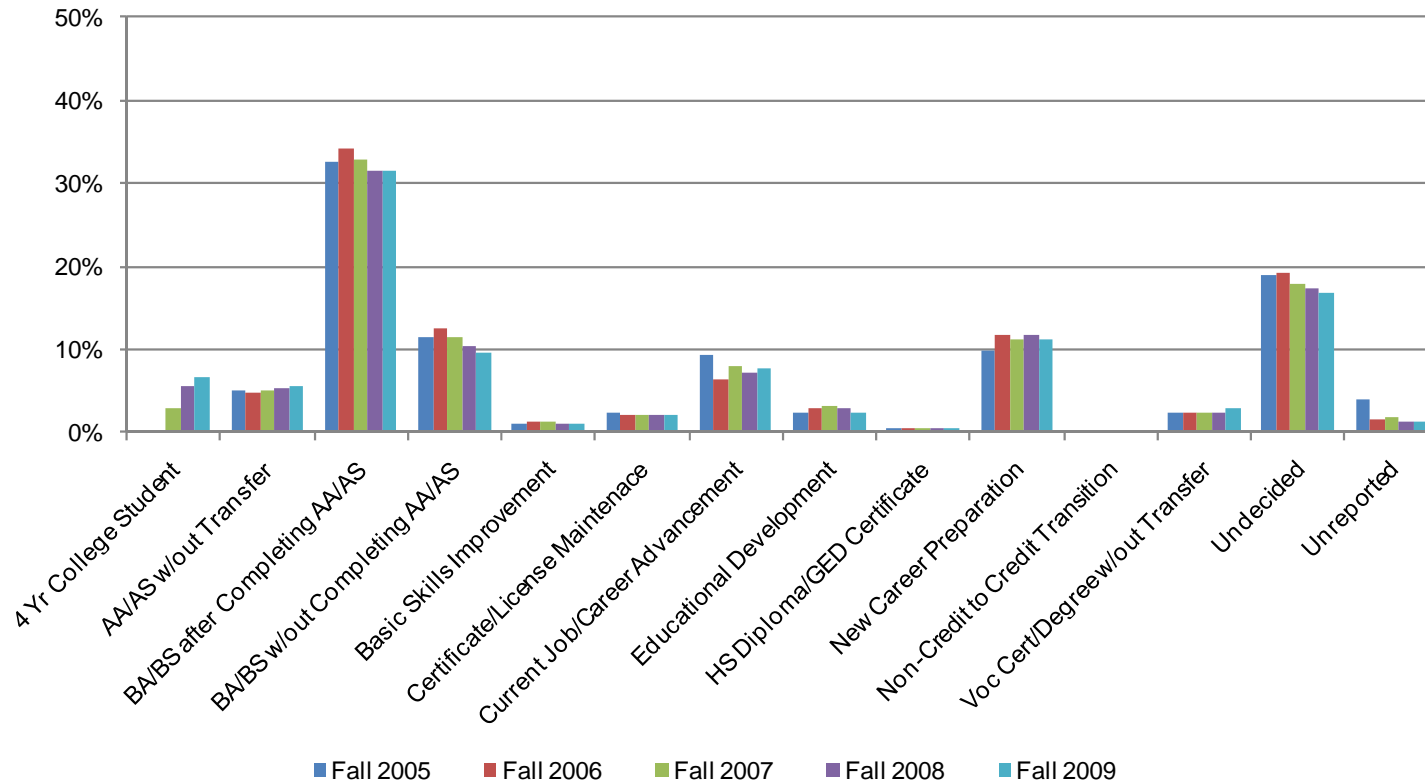
	Fall 2005		Fall 2006		Fall 2007		Fall 2008		Fall 2009		% Change Fall 05-09	College Average Fall 05-09	All Colleges Average Fall 05-09
Current High School Student	150	1%	157	2%	222	2%	218	2%	164	1%	9%	2%	4%
First-Time Student	908	8%	988	10%	1,130	10%	1,130	9%	1,067	9%	18%	9%	11%
First-Time Transfer Student	983	9%	1,120	11%	1,173	10%	1,190	10%	1,069	9%	9%	10%	13%
Returning Transfer Student	1,025	9%	776	7%	1,024	9%	741	6%	915	8%	-11%	8%	6%
Returning Student	590	5%	598	6%	773	7%	993	8%	913	8%	55%	7%	5%
Continuing Student	7,403	66%	6,718	65%	7,287	63%	7,614	64%	7,860	65%	6%	64%	61%
Unreported	183	2%	38	0%	32	0%	44	0%	42	0%	-77%	1%	1%
Total	11,242	100%	10,395	100%	11,641	100%	11,930	100%	12,030	100%	7%	100%	100%

Source: SDCCD Information System

Miramar College Section I: Headcount and Student Characteristics

Headcount by Educational Objective: Almost half of the Miramar student population (44%) selected transfer to obtain a BA/BS with or without completing an AA/AS degree as their educational objective during the five terms being reported. Between Fall 2005 and Fall 2009, the educational objective that made the most gain in popularity was to obtain high school diploma/GED (increased by 63%). In contrast, students who selected transfer to obtain a BA/BS without completing an AA/AS degree and current job/career advancement as educational objectives, decreased 11% and 13%, respectively.

Figure 1.6. Miramar College Headcount by Educational Objective



Miramar College Section I: Headcount and Student Characteristics

Table 1.6. Miramar College Headcount by Educational Objective

	Fall 2005		Fall 2006		Fall 2007		Fall 2008		Fall 2009		% Change Fall 05-09	College Average Fall 05-09	All Colleges Average Fall 05-09
4 Yr College Student	0	0%	0	0%	330	3%	665	6%	800	7%	---	---	---
AA/AS w/out Transfer	584	5%	499	5%	579	5%	644	5%	682	6%	17%	5%	5%
BA/BS after Completing AA/AS	3,669	33%	3,564	34%	3,812	33%	3,771	32%	3,800	32%	4%	33%	34%
BA/BS w/out Completing AA/AS	1,277	11%	1,313	13%	1,345	12%	1,248	10%	1,140	9%	-11%	11%	12%
Basic Skills Improvement	125	1%	140	1%	140	1%	124	1%	137	1%	10%	1%	1%
Certificate/License Maintenance	261	2%	216	2%	234	2%	267	2%	268	2%	3%	2%	2%
Current Job/Career Advancement	1,052	9%	678	7%	917	8%	866	7%	916	8%	-13%	8%	5%
Educational Development	267	2%	302	3%	360	3%	344	3%	288	2%	8%	3%	4%
HS Diploma/GED Certificate	48	0%	50	0%	54	0%	69	1%	78	1%	63%	1%	1%
New Career Preparation	1,111	10%	1,210	12%	1,315	11%	1,387	12%	1,362	11%	23%	11%	11%
Non-Credit to Credit Transition	0	0%	0	0%	8	0%	8	0%	10	0%	---	---	---
Voc Cert/Degree w/out Transfer	273	2%	243	2%	267	2%	293	2%	340	3%	25%	2%	2%
Undecided	2,138	19%	2,001	19%	2,075	18%	2,073	17%	2,040	17%	-5%	18%	18%
Unreported	437	4%	179	2%	205	2%	171	1%	169	1%	-61%	2%	1%
Total	11,242	100%	10,395	100%	11,641	100%	11,930	100%	12,030	100%	7%	100%	100%

Source: SDCCD Information System

Note: 4 Yr College Student and Non-Credit to Credit Transition was not an option prior to Fall 2007.

Miramar College Section I: Headcount and Student Characteristics

Headcount by Primary Language: On average, 93% of the Miramar student population spoke English as their primary language. This was comparable to the overall student population for all colleges in the district (93%). There was an increase for those who reported speaking English and those who spoke a language other than English (9% each).

Figure 1.7. Miramar College Headcount by Primary Language

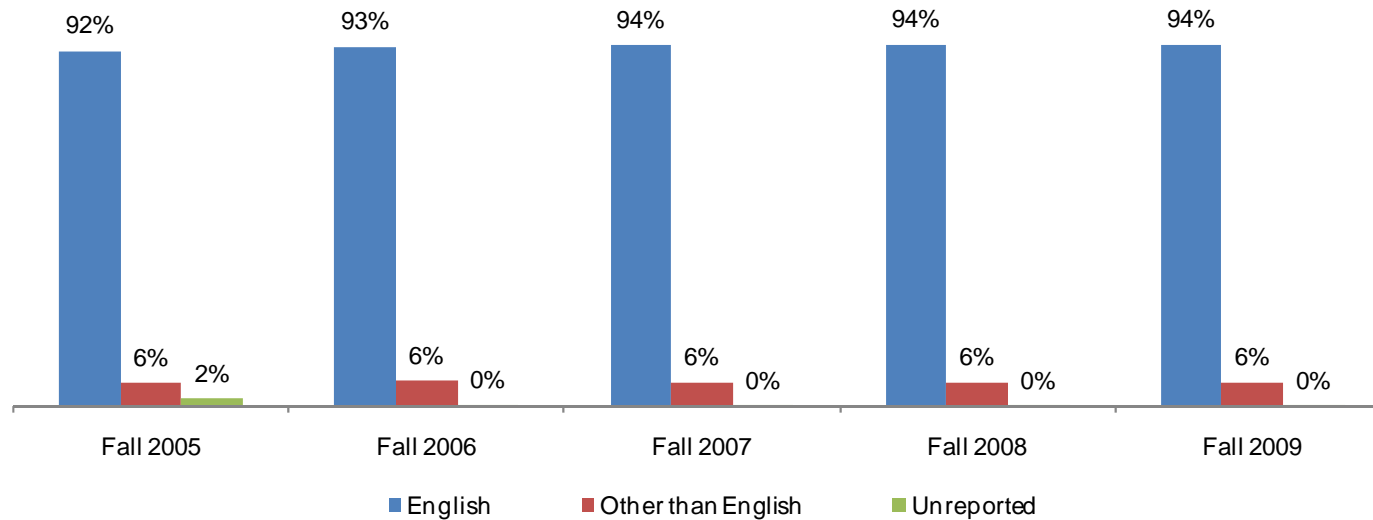


Table 1.7. Miramar College Headcount by Primary Language

	Fall 2005		Fall 2006		Fall 2007		Fall 2008		Fall 2009		% Change Fall 05-09	College Average Fall 05-09	All Colleges Average Fall 05-09
English	10,359	92%	9,694	93%	10,899	94%	11,183	94%	11,292	94%	9%	93%	93%
Other than English	674	6%	675	6%	730	6%	739	6%	736	6%	9%	6%	6%
Unreported	209	2%	26	0%	12	0%	8	0%	2	0%	-99%	0%	0%
Total	11,242	100%	10,395	100%	11,641	100%	11,930	100%	12,030	100%	7%	100%	100%

Source: SDCCD Information System

Miramar College Section I: Headcount and Student Characteristics

Headcount by Prior Education Level: From Fall 2005 to Fall 2009, a majority of the Miramar College student population were high school graduates (65%) on average. Miramar students who attended adult school increased 160%, from 10 in Fall 2005 to 26 in Fall 2009. On average, 14% of the Miramar student population had a bachelor's degree or higher and 7% had an associate degree.

Figure 1.8. Miramar College Headcount by Prior Education Level

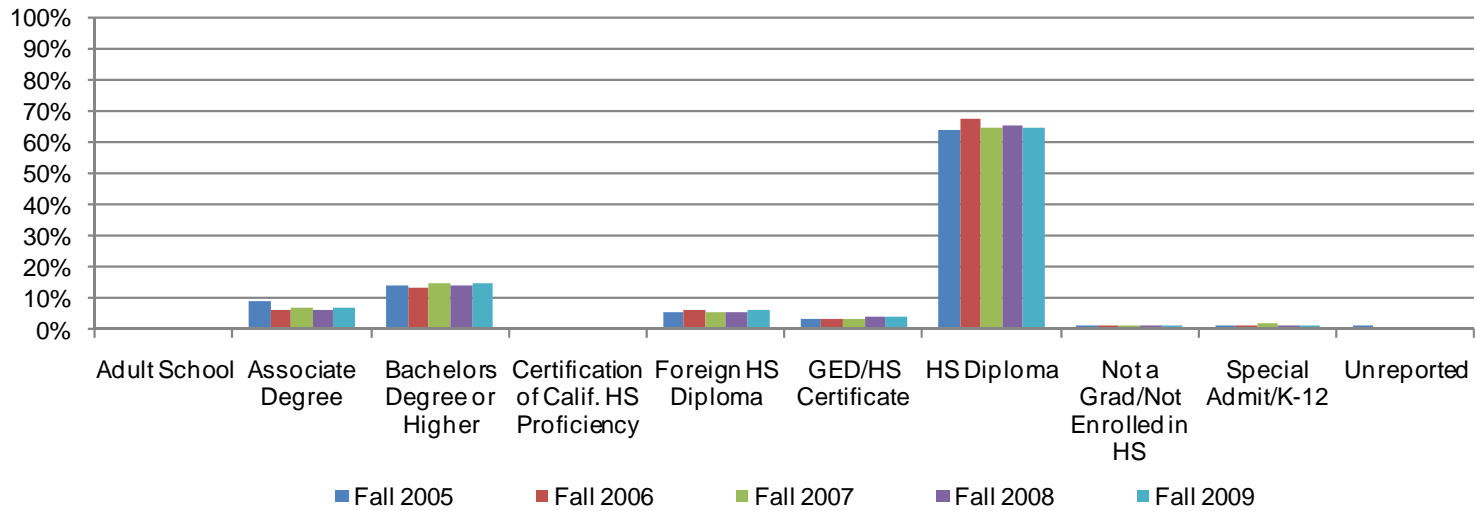


Table 1.8. Miramar College Headcount by Prior Education Level

	Fall 2005		Fall 2006		Fall 2007		Fall 2008		Fall 2009		% Change Fall 05-09	College Average Fall 05-09	All Colleges Average Fall 05-09
Adult School	10	0%	19	0%	17	0%	23	0%	26	0%	160%	0%	0%
Associate Degree	997	9%	651	6%	809	7%	787	7%	814	7%	-18%	7%	5%
Bachelors Degree or Higher	1,586	14%	1,390	13%	1,737	15%	1,720	14%	1,798	15%	13%	14%	12%
Certification of Calif. HS Proficiency	74	1%	58	1%	64	1%	73	1%	87	1%	18%	1%	1%
Foreign HS Diploma	632	6%	653	6%	682	6%	687	6%	720	6%	14%	6%	5%
GED/HS Certificate	380	3%	371	4%	443	4%	460	4%	495	4%	30%	4%	5%
HS Diploma	7,148	64%	6,989	67%	7,540	65%	7,827	66%	7,807	65%	9%	65%	67%
Not a Grad/Not Enrolled in HS	142	1%	114	1%	144	1%	165	1%	161	1%	13%	1%	2%
Special Admit/K-12	119	1%	137	1%	199	2%	185	2%	122	1%	3%	1%	4%
Unreported	154	1%	13	0%	6	0%	3	0%	0	0%	-100%	0%	0%
Total	11,242	100%	10,395	100%	11,641	100%	11,930	100%	12,030	100%	7%	100%	100%

Source: SDCCD Information System

Miramar College Section I: Headcount and Student Characteristics

Headcount by Service Area of Residence: Between Fall 2005 and Fall 2009, on average, 28% of the students who attended Miramar College resided within the Miramar service area. Among the three college service areas, the greatest proportion of Miramar students resided within its service area. Forty-nine percent of the students who attended Miramar College resided outside of the Miramar service area.

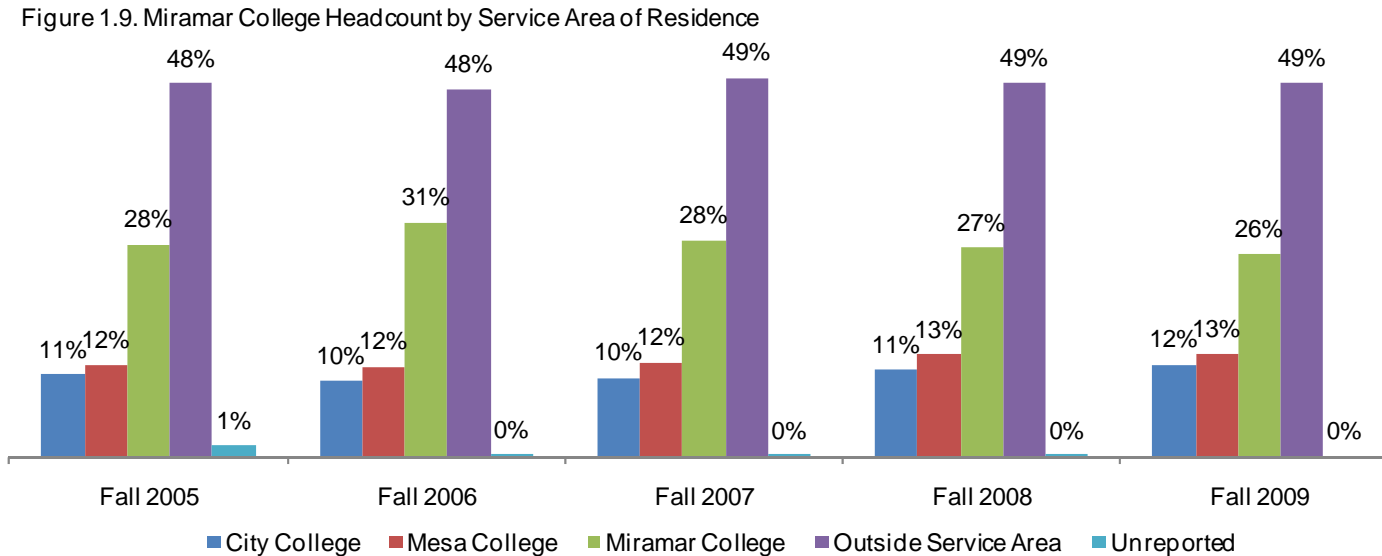


Table 1.9. Miramar College Headcount by Service Area of Residence

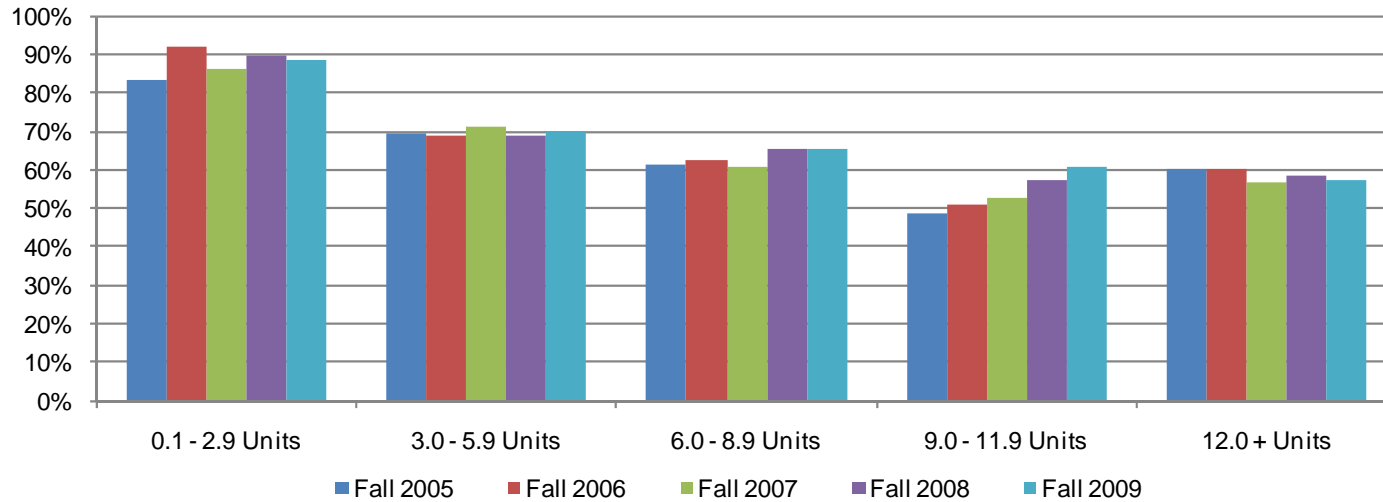
	Fall 2005		Fall 2006		Fall 2007		Fall 2008		Fall 2009		% Change Fall 05-09	College Average Fall 05-09	All Colleges Average Fall 05-09
City College	1,190	11%	1,022	10%	1,193	10%	1,333	11%	1,435	12%	21%	11%	30%
Mesa College	1,340	12%	1,218	12%	1,420	12%	1,573	13%	1,593	13%	19%	12%	22%
Miramar College	3,107	28%	3,173	31%	3,280	28%	3,231	27%	3,166	26%	2%	28%	12%
Outside Service Area	5,451	48%	4,969	48%	5,742	49%	5,790	49%	5,836	49%	7%	49%	36%
Unreported	154	1%	13	0%	6	0%	3	0%	0	0%	-100%	0%	0%
Total	11,242	100%	10,395	100%	11,641	100%	11,930	100%	12,030	100%	7%	100%	100%

Source: SDCCD Information System

Miramar College Section I: Headcount and Student Characteristics

Headcount by Units Attempted by Units Earned: Table 1.10 shows the interplay between units attempted (in rows) and units earned (in columns). The greatest proportion of students who attempted and earned units were those in the 0.1-2.9 unit range on average (87%). The least proportion of students who attempted and earned units were those in the 9.0-11.9 unit range on average (54%). Students who attempted and earned between 9.0-11.9 units increased 58%, while students who attempted and earned between 0.1-2.9 units decreased 23% between Fall 2005 and Fall 2009.

Figure 1.10. Miramar College Headcount by Units Attempted by Units Earned



Miramar College Section I: Headcount and Student Characteristics

Table 1.10. Miramar College Headcount by Units Attempted by Units Earned

		Units Earned						
		0 Units	0.1 - 2.9 Units	3.0 - 5.9 Units	6.0 - 8.9 Units	9.0 - 11.9 Units	12.0 + Units	
Units Attempted	Fall 2005	0.1 - 2.9 Units	17%	83%				
		3.0 - 5.9 Units	29%	1%	69%			
		6.0 - 8.9 Units	20%	1%	17%	61%		
		9.0 - 11.9 Units	16%	1%	13%	22%	48%	
		12.0 + Units	7%	1%	7%	9%	16%	60%
	Fall 2006	0.1 - 2.9 Units	8%	92%				
		3.0 - 5.9 Units	30%	1%	69%			
		6.0 - 8.9 Units	19%	1%	17%	62%		
		9.0 - 11.9 Units	14%	1%	14%	20%	51%	
		12.0 + Units	8%	1%	7%	9%	16%	60%
	Fall 2007	0.1 - 2.9 Units	14%	86%				
		3.0 - 5.9 Units	28%	1%	71%			
		6.0 - 8.9 Units	20%	1%	18%	61%		
		9.0 - 11.9 Units	14%	0%	14%	19%	53%	
		12.0 + Units	9%	1%	6%	11%	17%	56%
	Fall 2008	0.1 - 2.9 Units	10%	90%				
		3.0 - 5.9 Units	30%	1%	69%			
		6.0 - 8.9 Units	18%	1%	16%	65%		
		9.0 - 11.9 Units	13%	1%	11%	19%	57%	
		12.0 + Units	6%	1%	6%	12%	17%	59%
Fall 2009	0.1 - 2.9 Units	11%	89%					
	3.0 - 5.9 Units	29%	1%	70%				
	6.0 - 8.9 Units	16%	1%	17%	66%			
	9.0 - 11.9 Units	11%	1%	11%	17%	61%		
	12.0 + Units	6%	1%	6%	10%	19%	57%	
% Change Fall 05-09		--	-23%	23%	30%	58%	-3%	
College Average Fall 05-09		--	87%	70%	63%	54%	58%	

Source: SDCCD Information System

Note: Tutoring and non-graded courses were excluded. Percent change was based on counts.

Miramar College Section I: Headcount and Student Characteristics

Headcount by First Generation: Between Fall 2005 and Fall 2009, on average, one in five Miramar students reported being first generation college students (21%). Both groups of students, those who were and those who were not first generation college students, displayed an increase in headcount between Fall 2005 and Fall 2009 (22% & 11%, respectively).

Figure 1.11. Miramar College Headcount by First Generation

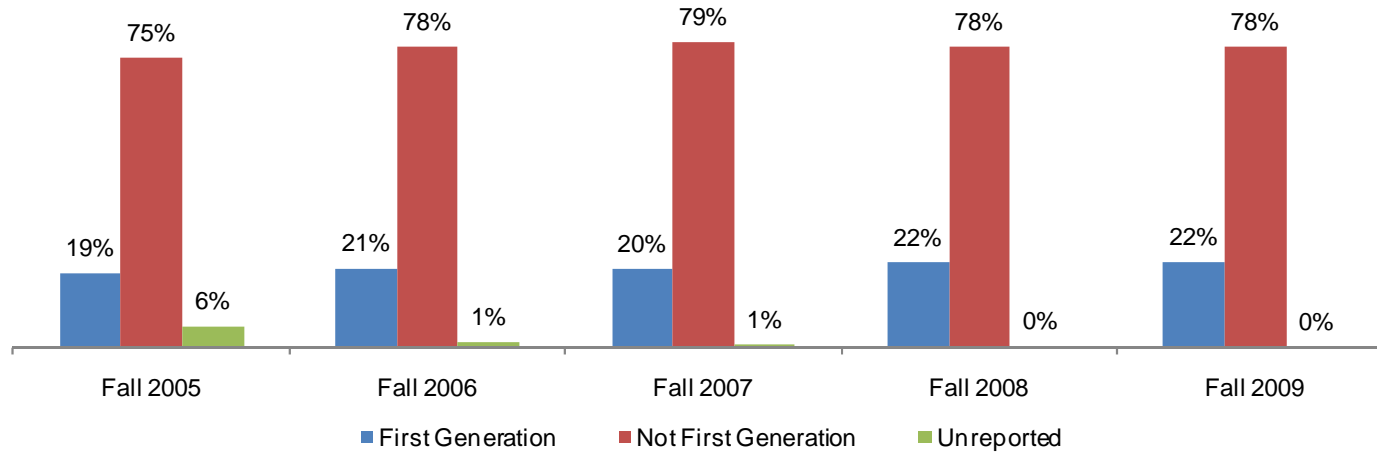


Table 1.11. Miramar College Headcount by First Generation

	Fall 2005		Fall 2006		Fall 2007		Fall 2008		Fall 2009		% Change Fall 05-09	College Average Fall 05-09	All Colleges Average Fall 05-09
First Generation	2,181	19%	2,152	21%	2,361	20%	2,610	22%	2,659	22%	22%	21%	25%
Not First Generation	8,429	75%	8,098	78%	9,201	79%	9,277	78%	9,345	78%	11%	77%	73%
Unreported	632	6%	145	1%	79	1%	43	0%	26	0%	-96%	2%	1%
Total	11,242	100%	10,395	100%	11,641	100%	11,930	100%	12,030	100%	7%	100%	100%

Source: SDCCD Information System

Miramar College Section I: Headcount and Student Characteristics

Headcount by Income Level: Between Fall 2005 and Fall 2009, almost one-third (31%) of the Miramar student population reported making \$33,000 or more a year on average. The number of students who reported making between \$0-2,999 a year on average increased 62%, from 555 in Fall 2005 to 898 in Fall 2009. It should be noted that more than one-third of students did not report their income level. Consequently, the data may not be representative of the actual income level of students at Miramar College.

Figure 1.12. Miramar College Headcount by Income Level

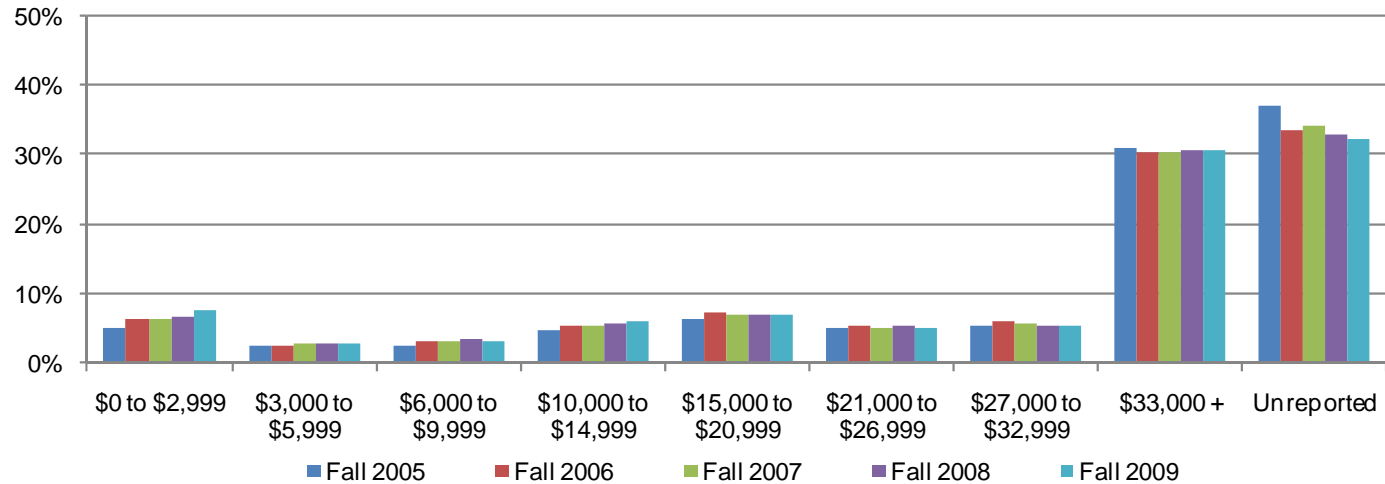


Table 1.12. Miramar College Headcount by Income Level

	Fall 2005		Fall 2006		Fall 2007		Fall 2008		Fall 2009		% Change Fall 05-09	College Average Fall 05-09	All Colleges Average Fall 05-09
\$0 to \$2,999	555	5%	646	6%	743	6%	796	7%	898	7%	62%	6%	9%
\$3,000 to \$5,999	290	3%	274	3%	323	3%	354	3%	322	3%	11%	3%	4%
\$6,000 to \$9,999	292	3%	328	3%	351	3%	398	3%	392	3%	34%	3%	4%
\$10,000 to \$14,999	548	5%	573	6%	642	6%	673	6%	743	6%	36%	6%	7%
\$15,000 to \$20,999	722	6%	757	7%	810	7%	844	7%	839	7%	16%	7%	8%
\$21,000 to \$26,999	584	5%	569	5%	586	5%	635	5%	626	5%	7%	5%	6%
\$27,000 to \$32,999	623	6%	612	6%	674	6%	653	5%	650	5%	4%	6%	6%
\$33,000 +	3,472	31%	3,165	30%	3,547	30%	3,660	31%	3,670	31%	6%	31%	24%
Unreported	4,156	37%	3,471	33%	3,965	34%	3,917	33%	3,890	32%	-6%	34%	31%
Total	11,242	100%	10,395	100%	11,641	100%	11,930	100%	12,030	100%	7%	100%	100%

Source: SDCCD Information System

Miramar College Section I: Headcount and Student Characteristics

Headcount by Disability Support Programs and Services (DSPS): On average, 97% of the Miramar student population had not received any type of disability services between Fall 2005 and Fall 2009. This was comparable to the overall student population for all colleges in the district. Moreover, the number of students who had not received disability services increased 9%, while the number of students who received disability services decreased 8% from Fall 2005 to Fall 2009.

Figure 1.13. Miramar College Headcount by Disability Support Programs and Services (DSPS)

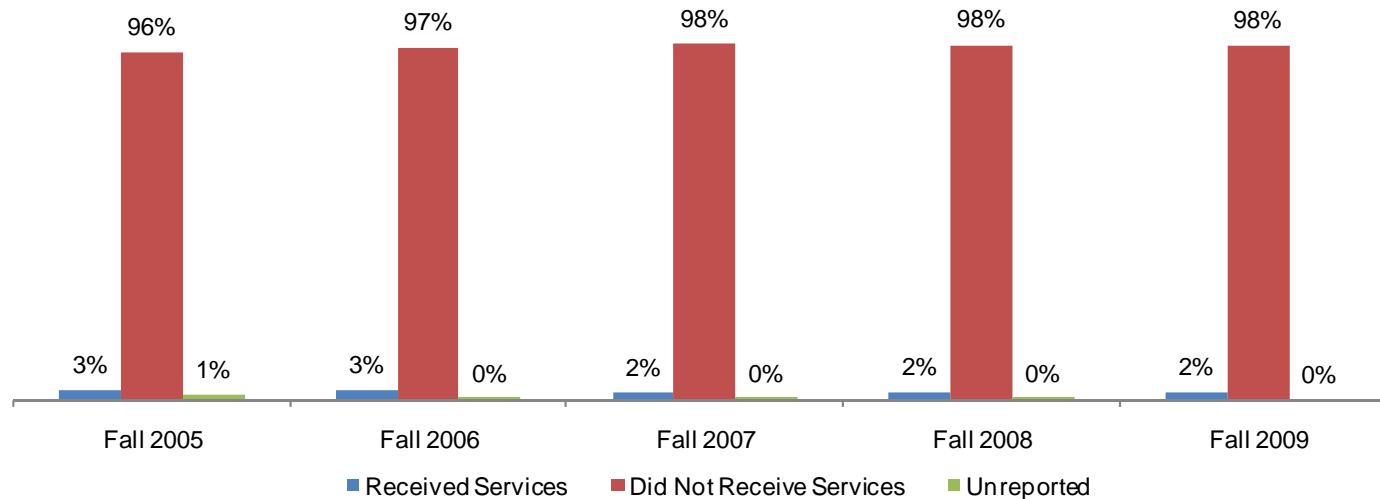


Table 1.13. Miramar College Headcount by Disability Support Programs and Services (DSPS)

	Fall 2005		Fall 2006		Fall 2007		Fall 2008		Fall 2009		% Change Fall 05-09	College Average Fall 05-09	All Colleges Average Fall 05-09
Received Services	286	3%	260	3%	218	2%	234	2%	262	2%	-8%	2%	3%
Did Not Receive Services	10,802	96%	10,122	97%	11,417	98%	11,693	98%	11,768	98%	9%	97%	97%
Unreported	154	1%	13	0%	6	0%	3	0%	0	0%	-100%	0%	0%
Total	11,242	100%	10,395	100%	11,641	100%	11,930	100%	12,030	100%	7%	100%	100%

Source: SDCCD Information System

Miramar College Section I: Headcount and Student Characteristics

Headcount by Extended Opportunity Programs and Services (EOPS): On average, 96% of the Miramar student population had not received EOPS services between Fall 2005 and Fall 2009. This was comparable to the overall student population for all colleges in the district. While students at Miramar who had received EOPS services decreased 20%, those who had not received EOPS services increased 10% between Fall 2005 and Fall 2009.

Figure 1.14. Miramar College Headcount by Extended Opportunity Programs and Services (EOPS)

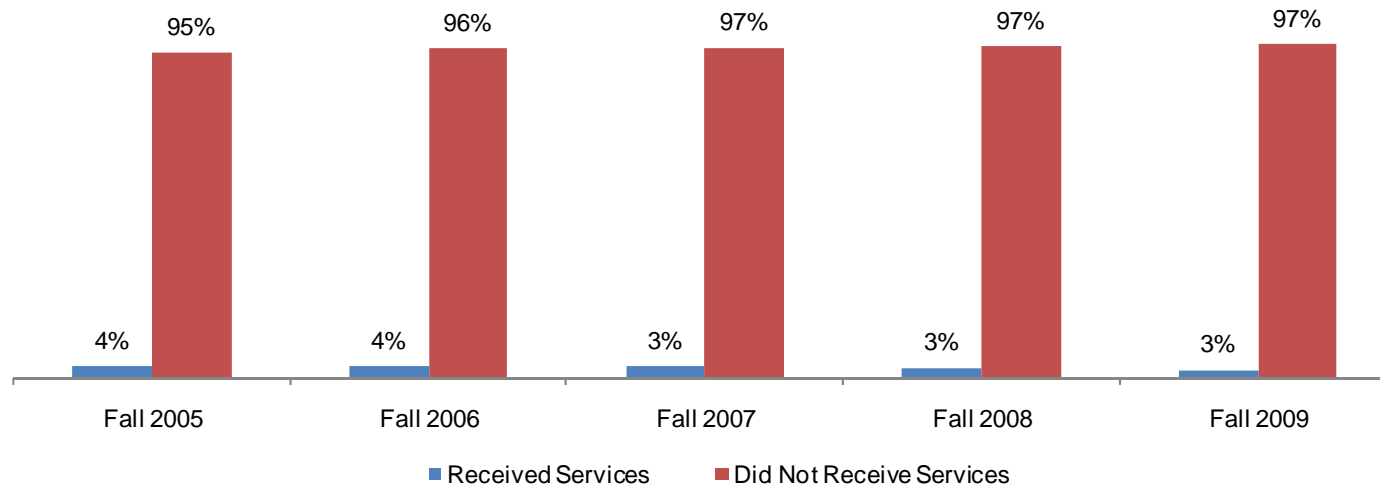


Table 1.14. Miramar College Headcount by Extended Opportunity Programs and Services (EOPS)

	Fall 2005		Fall 2006		Fall 2007		Fall 2008		Fall 2009		% Change Fall 05-09	College Average Fall 05-09	All Colleges Average Fall 05-09
Received Services	401	4%	379	4%	401	3%	393	3%	321	3%	-20%	3%	3%
Did Not Receive Services	10,687	95%	10,003	96%	11,234	97%	11,534	97%	11,709	97%	10%	96%	97%
Unreported	154	1%	13	0%	6	0%	3	0%	0	0%	-100%	0%	0%
Total	11,242	100%	10,395	100%	11,641	100%	11,930	100%	12,030	100%	7%	100%	100%

Source: SDCCD Information System

Section II
Term Persistence Rates

Miramar College Section II: Term Persistence Rates

This section of the Fact Book contains information on first-time to college student term persistence rates. For purposes of this report, term persistence rate is the measure of first-time to college students who were enrolled in a fall term as of census (eliminating drops and never attends prior to census) and who completed the term with a grade notation of A, B, C, P (Pass), D, F, I, NP (Not-Pass), or RD (Report Delayed), then were enrolled as of census in the subsequent spring term and received a grade notation for that term. Furthermore, all academy courses were excluded from analyses. The information in this section includes five years of data and is reported as follows:

- 1) Overall
- 2) Gender
- 3) Age
- 4) Ethnicity

Miramar College Section II: Term Persistence Rates

Overall Term Persistence: The average term persistence rate of first-time Miramar students was 62% between the Fall 2005 and Fall 2009 cohorts. Persistence rates remained relatively stable between the Fall 2005 and Fall 2009 cohorts. Overall, persistence rates increased 1% between the Fall 2005 and Fall 2009 cohorts. The average term persistence rate of first-time Miramar students (62%) was lower compared to the average term persistence rate of first-time students enrolled in all colleges in the district (67%).

Figure 2.1. Miramar College First-Time Student Overall Term Persistence

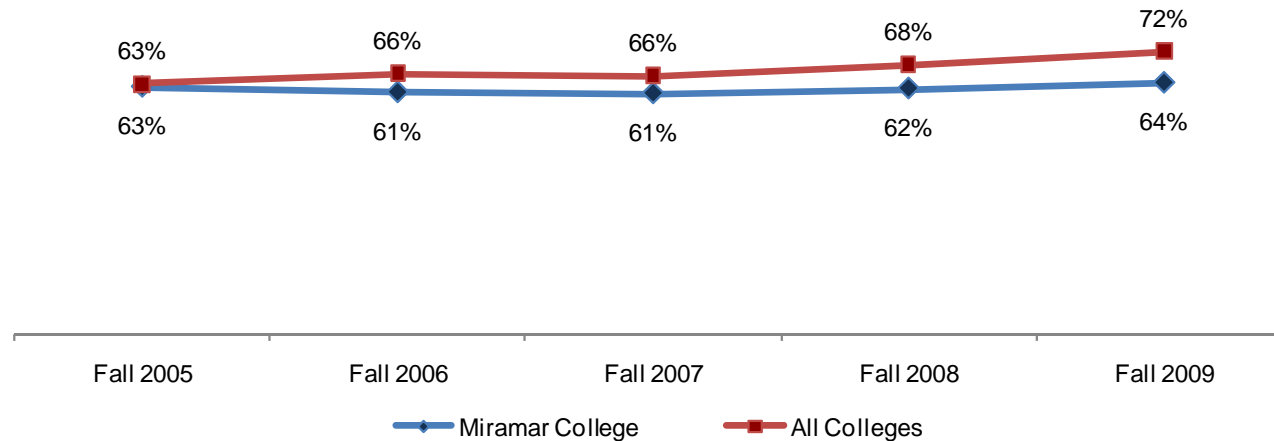


Table 2.1. Miramar College First-Time Student Overall Term Persistence

Cohort	Fall	Spring	Persistence	All Colleges Persistence Fall to Spring
Fall 2005	789	494	63%	63%
Fall 2006	835	511	61%	66%
Fall 2007	988	602	61%	66%
Fall 2008	973	605	62%	68%
Fall 2009	957	609	64%	72%
Average			62%	67%

Source: SDCCD Information System

Note: Academy courses were excluded.

Miramar College Section II: Term Persistence Rates

Term Persistence by Gender: On average, term persistence rates of female students (65%) were higher than their male student counterpart (60%) between the Fall 2005 and Fall 2009 cohorts. Persistence rates for female students decreased 5%, while persistence rates for male students increased 5% between the Fall 2005 and Fall 2009 cohorts.

Figure 2.2. Miramar College First-Time Student Term Persistence by Gender

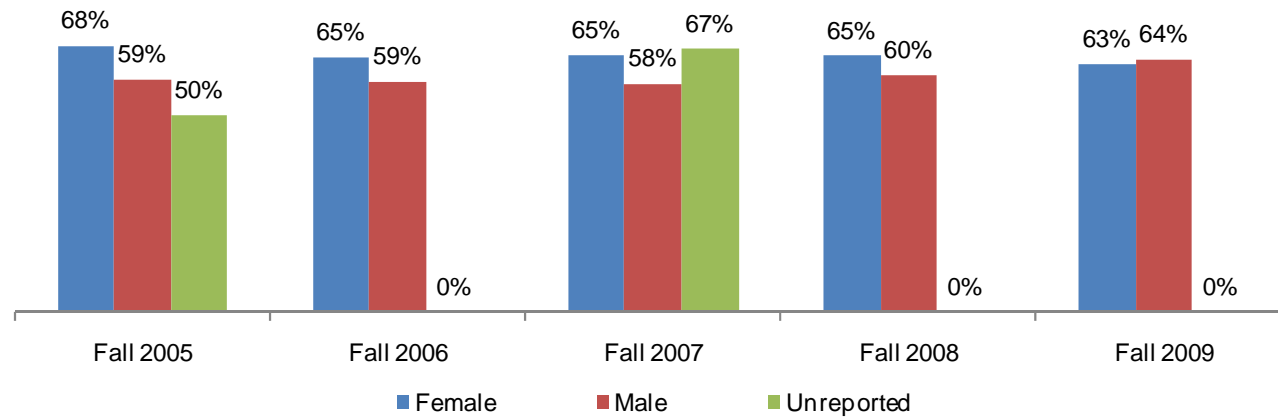


Table 2.2. Miramar College First-Time Student Term Persistence by Gender

Cohort	Female			Male			Unreported		
	Fall	Spring	Persistence	Fall	Spring	Persistence	Fall	Spring	Persistence
Fall 2005	322	218	68%	463	274	59%	4	2	50%
Fall 2006	348	225	65%	487	286	59%	0	0	---
Fall 2007	389	254	65%	596	346	58%	3	2	67%
Fall 2008	401	261	65%	572	344	60%	0	0	---
Fall 2009	415	261	63%	542	348	64%	0	0	---
Average			65%			60%			57%

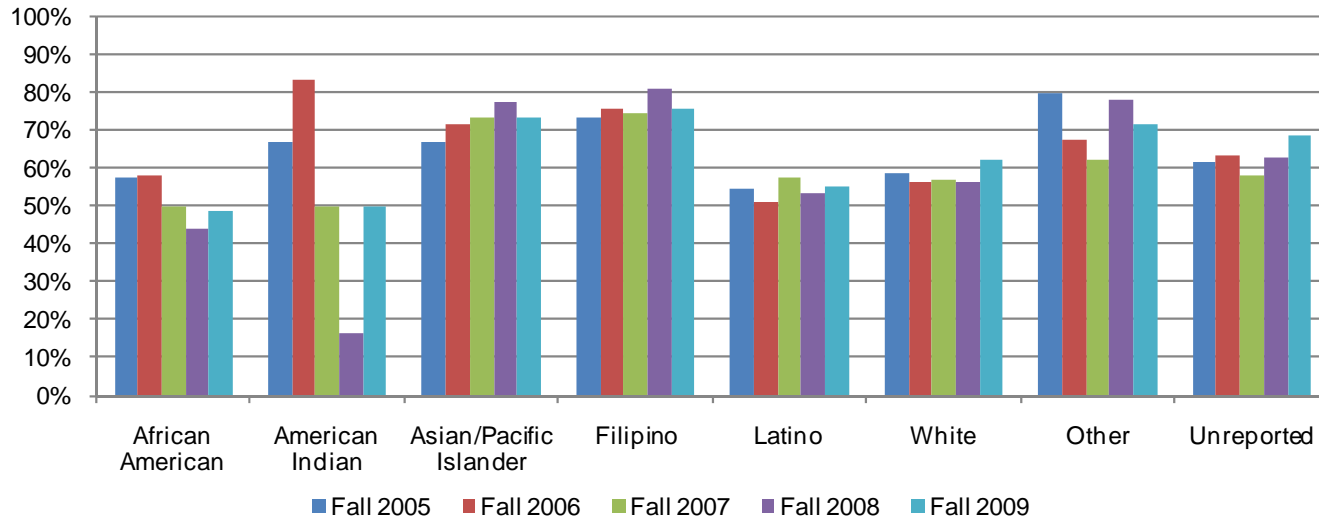
Source: SDCCD Information System

Note: Academy courses were excluded.

Miramar College Section II: Term Persistence Rates

Term Persistence by Ethnicity: The ethnic groups with the highest term persistence rates, on average, were Filipino students (76%), Asian/Pacific Islander students (73%), and students who were categorized as 'Other' ethnicities (71%). Persistence rates peaked to a high of 81% for Filipino students in the Fall 2008 cohort. Between the Fall 2005 and Fall 2009 cohorts, persistence rates of Asian/Pacific Islander students increased 6%. However, persistence rates of African American students decreased 10%, from 58% in the Fall 2005 cohort to 48% in the Fall 2009 cohort.

Figure 2.3. Miramar College First-Time Student Term Persistence by Ethnicity



Miramar College Section II: Term Persistence Rates

Table 2.3. Miramar College First-Time Student Term Persistence by Ethnicity

Cohort	African American			American Indian			Asian/Pacific Islander			Filipino		
	Fall	Spring	Persistence	Fall	Spring	Persistence	Fall	Spring	Persistence	Fall	Spring	Persistence
Fall 2005	40	23	58%	6	4	67%	111	74	67%	124	91	73%
Fall 2006	55	32	58%	6	5	83%	123	88	72%	99	75	76%
Fall 2007	58	29	50%	14	7	50%	148	108	73%	112	83	74%
Fall 2008	57	25	44%	6	1	17%	171	132	77%	109	88	81%
Fall 2009	60	29	48%	4	2	50%	145	106	73%	110	83	75%
Average			51%			53%			73%			76%

Cohort	Latino			White			Other			Unreported		
	Fall	Spring	Persistence	Fall	Spring	Persistence	Fall	Spring	Persistence	Fall	Spring	Persistence
Fall 2005	108	59	55%	317	186	59%	34	27	79%	49	30	61%
Fall 2006	128	65	51%	335	188	56%	40	27	68%	49	31	63%
Fall 2007	170	97	57%	387	219	57%	42	26	62%	57	33	58%
Fall 2008	167	89	53%	372	209	56%	27	21	78%	64	40	63%
Fall 2009	210	116	55%	338	210	62%	42	30	71%	48	33	69%
Average			54%			58%			71%			63%

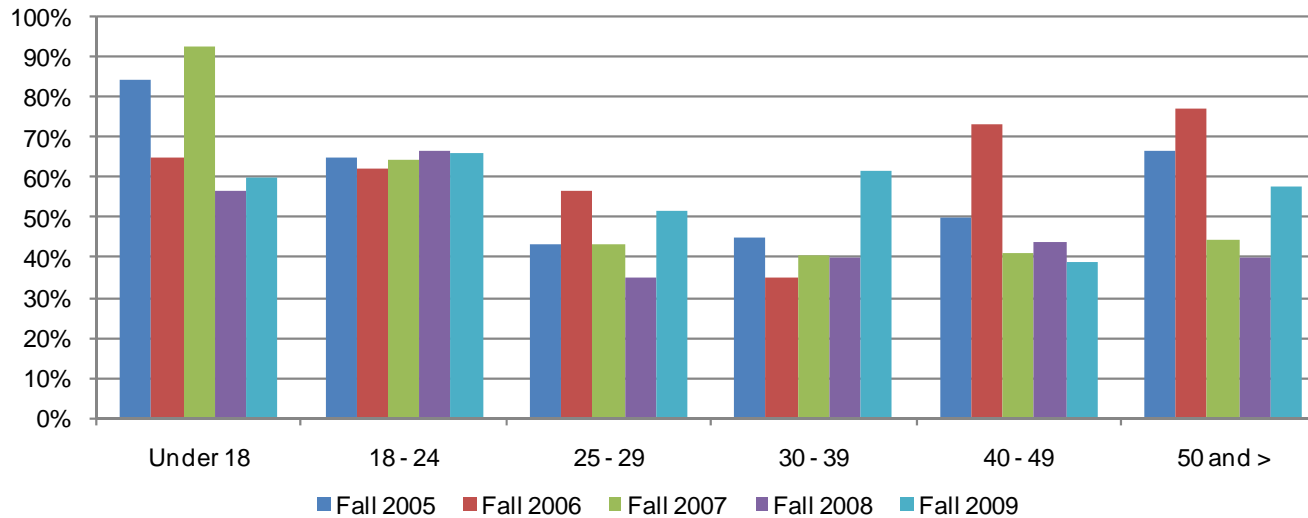
Source: SDCCD Information System

Note: Academy courses were excluded.

Miramar College Section II: Term Persistence Rates

Term Persistence by Age: From the Fall 2005 cohort to the Fall 2009 cohort, term persistence rates were the highest for students under age 18 (70%), followed by students between ages 18-24 (65%), and for students ages 50 and older (56%) on average. For students under age 18, persistence rates peaked to a high of 93% in the Fall 2007 cohort. Persistence rates for students under age 18 decreased 25%, from 85% in the Fall 2005 cohort to 60% in the Fall 2009 cohort. However, students ages 30-39 years old displayed a 17% increase in persistence rates between the Fall 2005 and Fall 2009 cohorts.

Figure 2.4. Miramar College First-Time Student Term Persistence by Age



Miramar College Section II: Term Persistence Rates

Table 2.4. Miramar College First-Time Student Term Persistence by Age

Cohort	Under 18			18 - 24			25 - 29		
	Fall	Spring	Persistence	Fall	Spring	Persistence	Fall	Spring	Persistence
Fall 2005	13	11	85%	664	431	65%	46	20	43%
Fall 2006	17	11	65%	690	431	62%	60	34	57%
Fall 2007	14	13	93%	802	516	64%	78	34	44%
Fall 2008	23	13	57%	798	533	67%	60	21	35%
Fall 2009	10	6	60%	764	503	66%	83	43	52%
Average			70%			65%			46%

Cohort	30 - 39			40 - 49			50 and >		
	Fall	Spring	Persistence	Fall	Spring	Persistence	Fall	Spring	Persistence
Fall 2005	38	17	45%	22	11	50%	6	4	67%
Fall 2006	40	14	35%	15	11	73%	13	10	77%
Fall 2007	54	22	41%	22	9	41%	18	8	44%
Fall 2008	50	20	40%	32	14	44%	10	4	40%
Fall 2009	63	39	62%	18	7	39%	19	11	58%
Average			46%			48%			56%

Source: SDCCD Information System

Note: Academy courses were excluded.

Section III
Student Outcomes

Miramar College Section III: Student Outcomes

This section of the Fact Book contains information on various student outcomes which may be considered indirect assessments of student learning. The outcomes included in this section are: 1) Annual Successful Course Completion Rates, 2) Annual Retention Rates, 3) Annual GPA, 4) Annual Awards Conferred, and 5) Annual Transfer Volume. All of the information in this section includes five years of data by gender, age, and ethnicity. The following describes in detail each of the outcomes listed.

- 1) Successful Course Completion Rates. The first outcome reported in this section is successful course completion, or student success rate. For purposes of this report, the success rate is the percentage of students who completed a course with a grade of A, B, C, or P out of total enrollments as of census. *Note: Tutoring and non-credit classes are excluded.*
- 2) Retention Rates. The second outcome reported in this section is retention rate. For purposes of this report, the retention rate is the percentage of students who completed a course with a grade of A, B, C, D, F, P, NP, I, or RD out of total enrollments as of census.
- 3) Annual GPA. The third outcome reported in this section is annual GPA. For purposes of this report, the annual GPA is the cumulative term grade point average of all courses taken for a grade in one academic year.
- 4) Annual Awards Conferred. The fourth outcome reported in this section is the annual awards conferred. For purposes of this report, the annual awards conferred are the total number of associate degrees and certificates awarded in a single academic year (summer, fall, and spring). *Note: Annual awards conferred that are reported in this Fact Book are considered preliminary data. Please see the upcoming Awards Conferred Supplement report for final annual awards conferred numbers.*
- 5) Annual Transfer Volume. The last outcome reported in this section is the number of students who transfer annually. For the purposes of this report, the annual transfer volume represents the total number of students who transferred to a 4-year institution either during the last semester they were enrolled at an SDCCD college or up to three semesters following the last semester they were enrolled at an SDCCD college. The last semester attended includes students who stopped out for one or more semesters and enrolled at a later date (reverse transfer). The student must also have completed 12 or more cumulative transferrable units earned within 12 consecutive semesters preceding and including the last semester enrolled at SDCCD.

Note: Transfer volume that is reported in this Fact Book is considered preliminary data. Please see the upcoming Spring 2011 SDCCD Transfer Report: A Longitudinal Perspective for final transfer volume numbers.

Miramar College Section III: Student Outcomes (Success Rates)

Overall Success Rates: Miramar College annual success rates remained relatively stable from 2005/06 to 2009/10, with an average of 71%. This success rate five-year average was higher than the success rate five-year average of all colleges in the district (67%). The Miramar College annual success rates were higher, on average, compared to the annual success rates of all colleges in the district between 2005/06 and 2009/10.

Figure 3.1. Miramar College Overall Success Rates

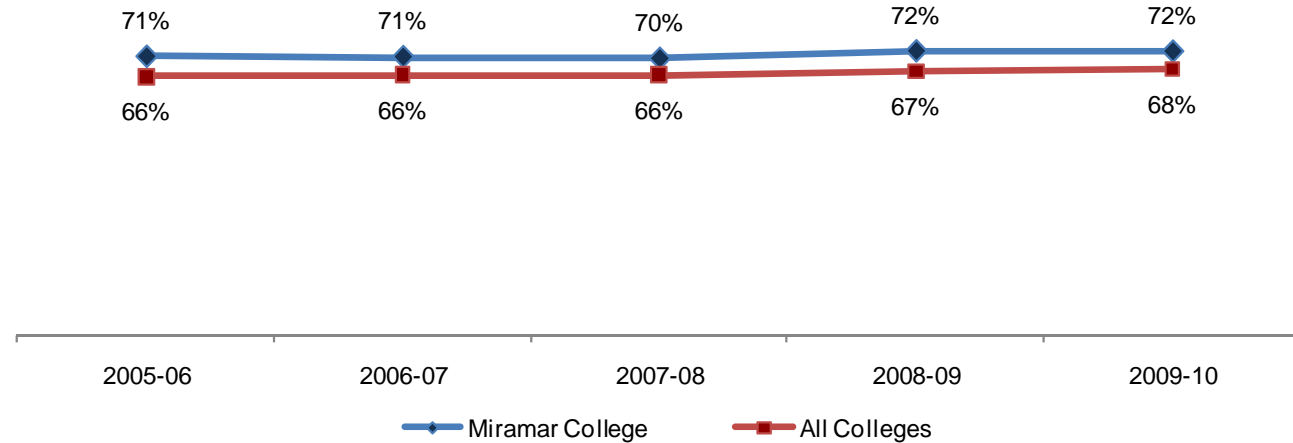


Table 3.1. Miramar College Overall Success Rates

	2005-06	2006-07	2007-08	2008-09	2009-10	% Change 05/06-09/10	College Average 2005-10	All Colleges Average 2005-10
Average	71%	71%	70%	72%	72%	1%	71%	67%

Source: SDCCD Information System

Note: Tutoring classes were excluded.

Miramar College Section III: Student Outcomes (Success Rates)

Success Rates by Gender: On average, male student success rates (72%) were higher compared to their female student counterpart (70%) between 2005/06 and 2009/10. At Miramar College, both male and female students had higher average success rates compared to the average success rates of the male and female student populations of all colleges in the district (66% & 67%, respectively). Both male and female students at Miramar College had average success rates comparable to the average success rate of the general student population at Miramar (71%). However, these rates exceeded the all colleges in the district general student population average success rate of 67%.

Figure 3.2. Miramar College Success Rates by Gender

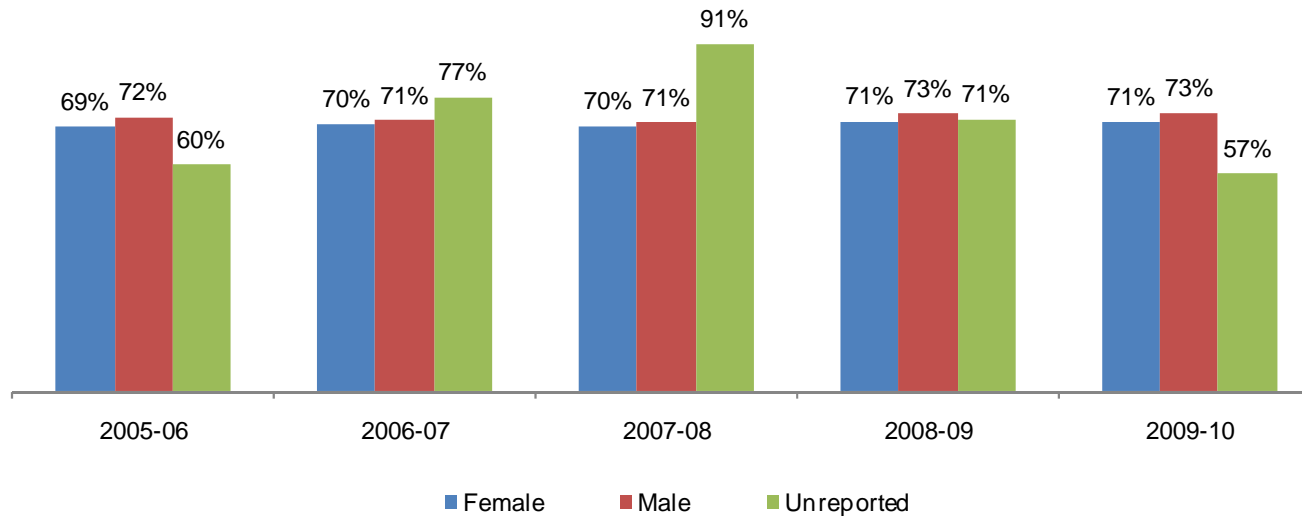


Table 3.2. Miramar College Success Rates by Gender

	2005-06	2006-07	2007-08	2008-09	2009-10	% Change 05/06-09/10	College Average 2005-10	All Colleges Average 2005-10
Female	69%	70%	70%	71%	71%	1%	70%	67%
Male	72%	71%	71%	73%	73%	1%	72%	66%
Unreported	60%	77%	91%	71%	57%	-2%	71%	69%
Average	71%	71%	70%	72%	72%	1%	71%	67%

Source: SDCCD Information System

Note: Tutoring classes were excluded.

Miramar College Section III: Student Outcomes (Success Rates)

Success Rates by Ethnicity: On average, the ethnic groups with the highest success rates between 2005/06 and 2009/10 were White students (74%) and Asian/Pacific Islanders students (72%). The average success rate of African American (60%) students was lower compared to the average success rates of both the general student populations at Miramar College (71%) and all colleges in the district (67%). The average success rates of Asian/Pacific Islander and White students exceeded the same averages. The average success rates of American Indian, Filipino, Latino, and students categorized as ‘Other’ ethnicities were comparable to or higher than the average success rate of the general student population of all colleges in the district, while the same averages were lower than the average success rate of the general student population at Miramar.

Figure 3.3. Miramar College Success Rates by Ethnicity

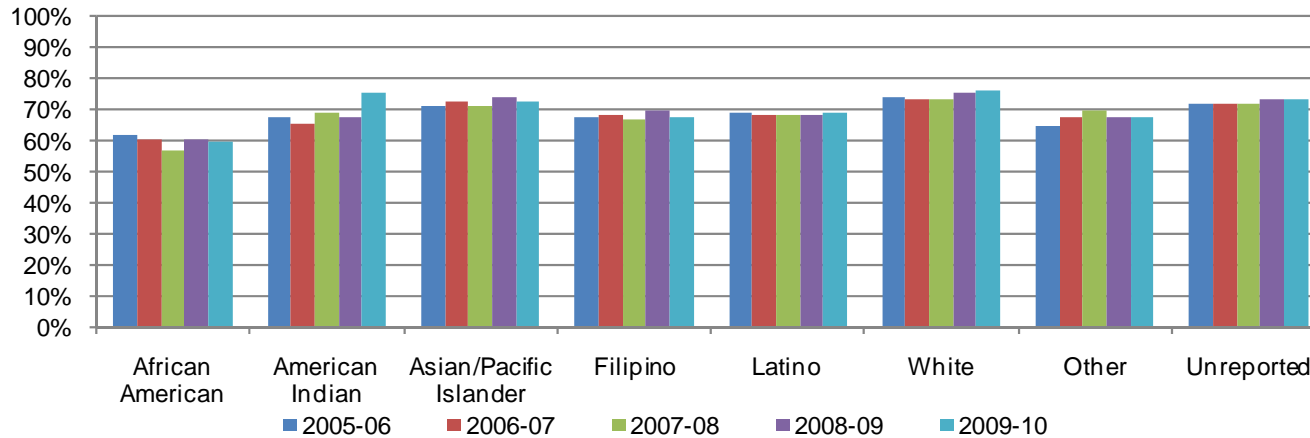


Table 3.3. Miramar College Success Rates by Ethnicity

	2005-06	2006-07	2007-08	2008-09	2009-10	% Change 05/06-09/10	College Average 2005-10	All Colleges Average 2005-10
African American	62%	60%	57%	60%	60%	-2%	60%	55%
American Indian	67%	65%	69%	67%	75%	8%	69%	63%
Asian/Pacific Islander	71%	72%	71%	74%	73%	1%	72%	71%
Filipino	67%	68%	66%	70%	68%	1%	68%	66%
Latino	69%	68%	68%	68%	69%	0%	68%	62%
White	74%	73%	73%	75%	76%	2%	74%	71%
Other	64%	68%	70%	67%	68%	3%	67%	65%
Unreported	72%	72%	72%	73%	73%	1%	73%	68%
Average	71%	71%	70%	72%	72%	1%	71%	67%

Source: SDCCD Information System

Note: Tutoring classes were excluded.

Miramar College Section III: Student Outcomes (Success Rates)

Success Rates by Age: With the exception of students who were under age 18, a general trend between 2005/06 and 2009/10 showed as age increased so did success rates. Students under age 18 had the highest success rate on average (84%). Students ages 50 and older generally showed a mild upward trend in success rates, from 77% in 2005/06 to 82% in 2009/10. With the exception of students ages 18-24, the average success rates of all the other age groups were higher than the average success rates of both the general student populations at Miramar College (71%) and all colleges in the district (67%).

Figure 3.4. Miramar College Success Rates by Age

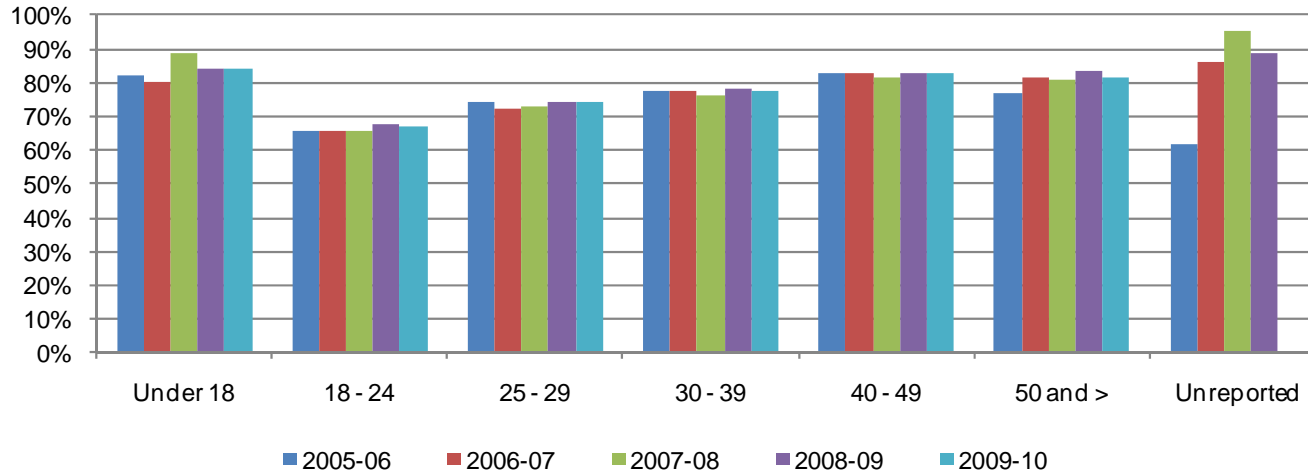


Table 3.4. Miramar College Success Rates by Age

	2005-06	2006-07	2007-08	2008-09	2009-10	% Change 05/06-09/10	College Average 2005-10	All Colleges Average 2005-10
Under 18	82%	80%	89%	84%	84%	2%	84%	84%
18 - 24	66%	66%	65%	68%	67%	2%	66%	64%
25 - 29	74%	72%	73%	74%	74%	0%	74%	69%
30 - 39	78%	78%	76%	78%	78%	0%	78%	71%
40 - 49	83%	83%	82%	83%	83%	0%	83%	73%
50 and >	77%	81%	81%	83%	82%	4%	81%	73%
Unreported	62%	86%	96%	89%	---	---	---	72%
Average	71%	71%	70%	72%	72%	1%	71%	67%

Source: SDCCD Information System

Note: Tutoring classes were excluded.

Miramar College Section III: Student Outcomes (Retention Rates)

Overall Retention Rates: The annual retention rates of Miramar College showed a 3% increase between 2005/06 and 2009/10, with an average of 85%. This retention rate five-year average was higher compared to the retention rate five-year average of all colleges in the district (83%). The Miramar College annual retention rates were higher, on average, compared to the annual retention rates of all colleges in the district between 2005/06 and 2009/10.

Figure 3.5. Miramar College Overall Retention Rates

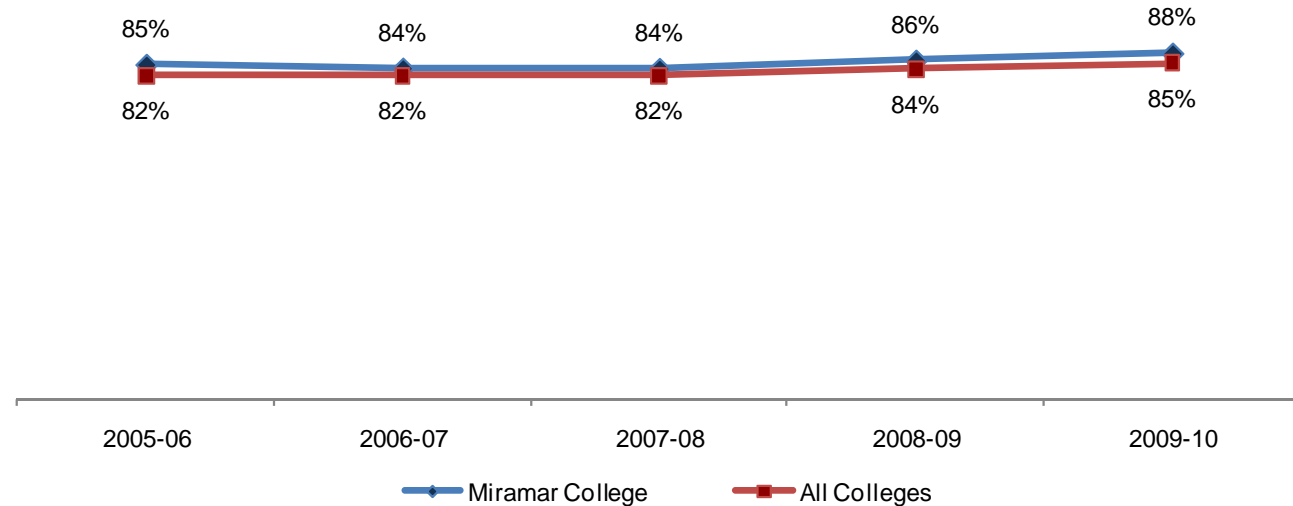


Table 3.5. Miramar College Overall Retention Rates

	2005-06	2006-07	2007-08	2008-09	2009-10	% Change 05/06-09/10	College Average 2005-10	All Colleges Average 2005-10
Average	85%	84%	84%	86%	88%	3%	85%	83%

Source: SDCCD Information System

Miramar College Section III: Student Outcomes (Retention Rates)

Retention Rates by Gender: On average, male student retention rates (86%) were higher compared to their female student counterpart (84%) between 2005/06 and 2009/10. The average retention rates of both male and female students at Miramar College were higher than the average retention rates of the male and female student populations of all colleges in the district (83% each). Both male and female students at Miramar College had average retention rates comparable to the average retention rate of the general student population at Miramar (85%). Between 2005/06 and 2009/10, the average retention rates of both the male and female student populations at Miramar College were higher than the average retention rate of the general student population of all colleges in the district (83%).

Figure 3.6. Miramar College Retention Rates by Gender

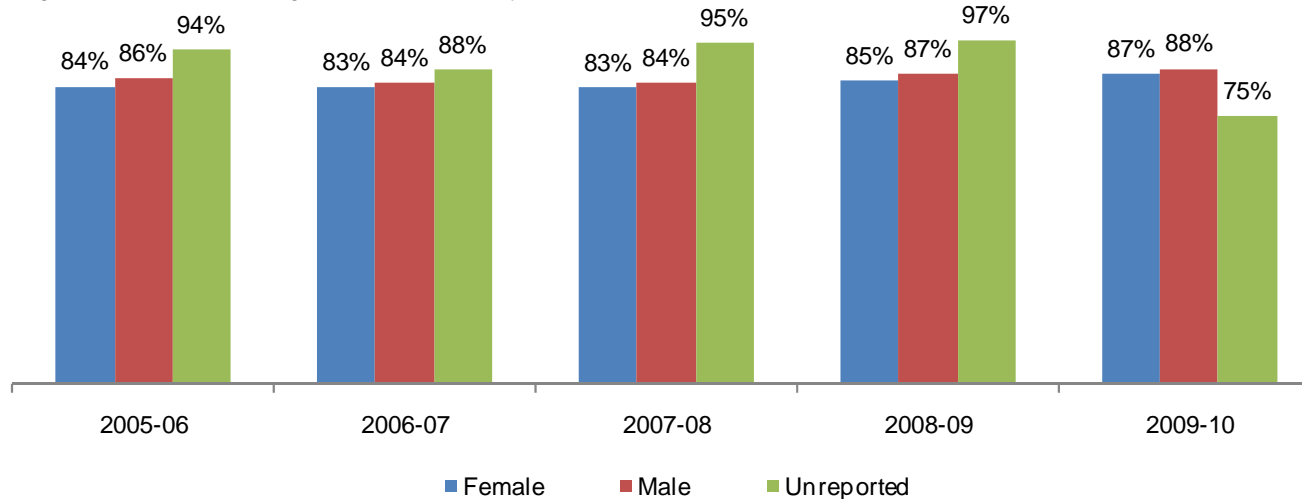


Table 3.6. Miramar College Retention Rates by Gender

	2005-06	2006-07	2007-08	2008-09	2009-10	% Change 05/06-09/10	College Average 2005-10	All Colleges Average 2005-10
Female	84%	83%	83%	85%	87%	3%	84%	83%
Male	86%	84%	84%	87%	88%	3%	86%	83%
Unreported	94%	88%	95%	97%	75%	-19%	93%	88%
Average	85%	84%	84%	86%	88%	3%	85%	83%

Source: SDCCD Information System

Miramar College Section III: Student Outcomes (Retention Rates)

Retention Rates by Ethnicity: The ethnic groups with the highest retention rates, on average, were both Asian/Pacific Islander and White students (86% each) and both American Indian and Latino students (85% each) between 2005/06 and 2009/10. The average retention rate of African American students (82%) was lower than the average retention rates of both the general student populations at Miramar College (85%) and all colleges in the district (83%). The average retention rates of Filipino students and students categorized as 'Other' ethnicities were lower than the average retention rate of the Miramar College general student population, while was higher than the average retention rate of the general student population of all colleges in the district. The average retention rates of American Indian, Asian/Pacific Islander, Latino, and White students were comparable to or exceeded the same averages.

Figure 3.7. Miramar College Retention Rates by Ethnicity

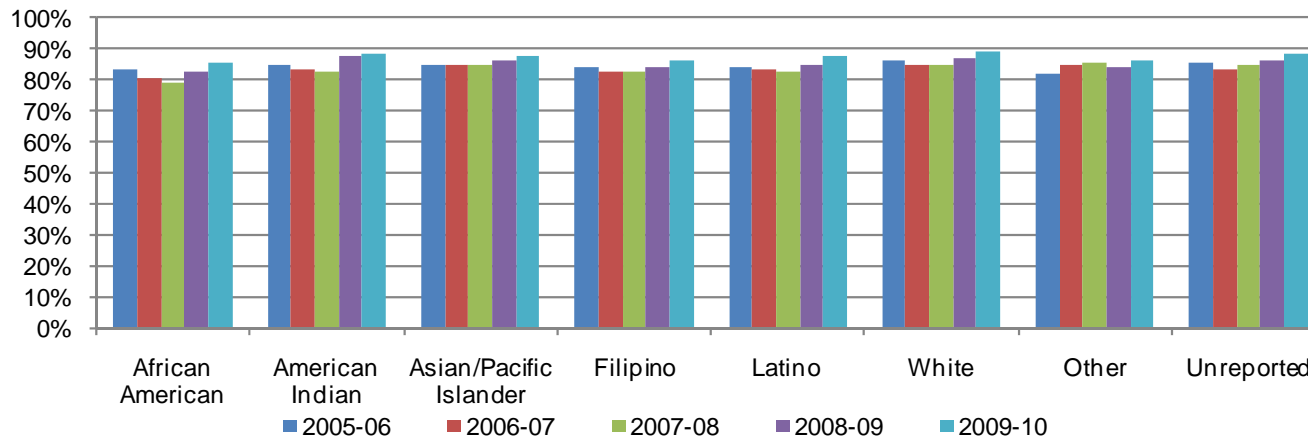


Table 3.7. Miramar College Retention Rates by Ethnicity

	2005-06	2006-07	2007-08	2008-09	2009-10	% Change 05/06-09/10	College Average 2005-10	All Colleges Average 2005-10
African American	83%	81%	79%	83%	85%	2%	82%	79%
American Indian	85%	83%	83%	87%	88%	3%	85%	80%
Asian/Pacific Islander	85%	85%	84%	86%	87%	3%	86%	85%
Filipino	84%	83%	82%	84%	86%	3%	84%	83%
Latino	84%	83%	83%	85%	87%	3%	85%	83%
White	86%	85%	85%	87%	89%	3%	86%	84%
Other	82%	85%	85%	84%	86%	4%	84%	84%
Unreported	85%	83%	84%	86%	88%	3%	86%	83%
Average	85%	84%	84%	86%	88%	3%	85%	83%

Source: SDCCD Information System

Miramar College Section III: Student Outcomes (Retention Rates)

Retention Rates by Age: Between 2005/06 and 2009/10, the age groups with the highest retention rates, on average, were students who were below 18 years old (95%) and students ages 40 years and above (90% each). The retention rates of all age groups generally showed an upward trend between 2005/06 and 2009/10. The average retention rates of most of the age groups were comparable to or higher than the average retention rates of both the general student populations at Miramar College (85%) and all colleges in the district (83%). The average retention rate of students between ages 18 and 24 years old (84%) was lower than the average retention rate of the general student population at Miramar College (85%), while was higher than the average retention rate of the general student population of all colleges in the district (83%).

Figure 3.8. Miramar College Retention Rates by Age

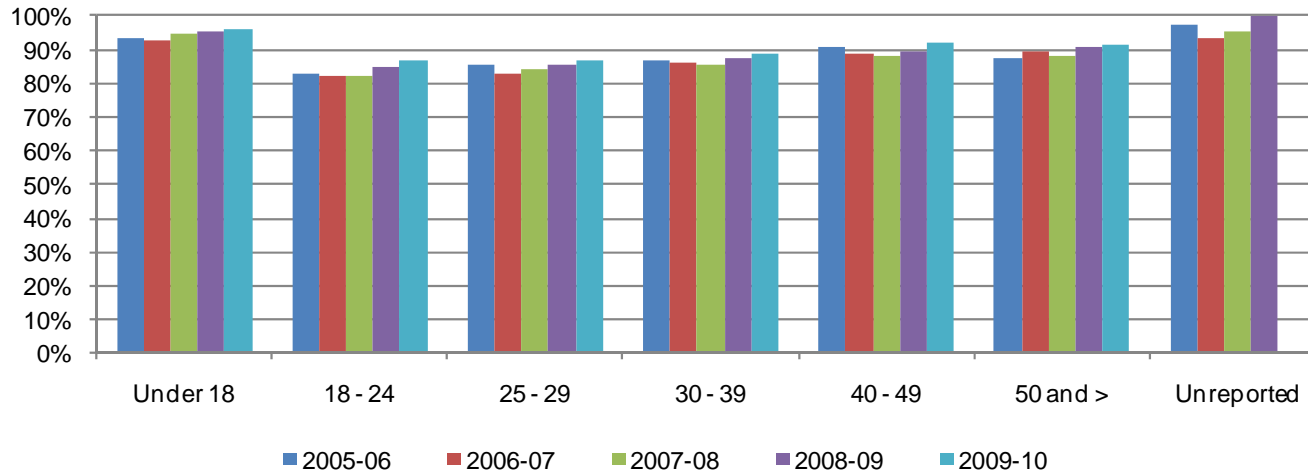


Table 3.8. Miramar College Retention Rates by Age

	2005-06	2006-07	2007-08	2008-09	2009-10	% Change 05/06-09/10	College Average 2005-10	All Colleges Average 2005-10
Under 18	94%	93%	95%	95%	96%	3%	95%	94%
18 - 24	83%	82%	82%	85%	87%	4%	84%	83%
25 - 29	86%	83%	84%	85%	87%	1%	85%	83%
30 - 39	87%	86%	85%	87%	89%	2%	87%	83%
40 - 49	91%	89%	88%	89%	92%	1%	90%	84%
50 and >	87%	89%	88%	91%	91%	4%	90%	84%
Unreported	97%	93%	96%	100%	---	---	---	90%
Average	85%	84%	84%	86%	88%	3%	85%	83%

Source: SDCCD Information System

Miramar College Section III: Student Outcomes (Annual GPA)

Overall Annual GPA: The annual GPAs for Miramar College remained relatively stable between 2005/06 and 2009/10, with an average of 2.80. Miramar’s collegewide annual GPA five-year average was higher than the annual GPA five-year average of all colleges in the district (2.67). The Miramar College annual GPAs were higher, on average, compared to the annual GPAs of all colleges in the district between 2005/06 and 2009/10.

Figure 3.9. Miramar College Overall Annual GPA

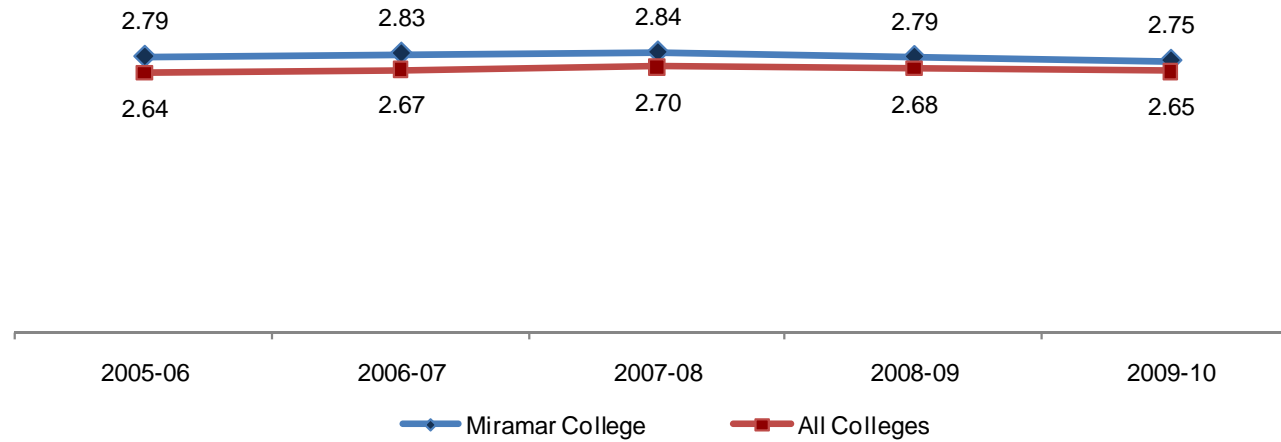


Table 3.9. Miramar College Overall Annual GPA

	2005-06	2006-07	2007-08	2008-09	2009-10	College Average 2005-10	All Colleges Average 2005-10
Average	2.79	2.83	2.84	2.79	2.75	2.80	2.67

Source: SDCCD Information System

Miramar College Section III: Student Outcomes (Annual GPA)

Annual GPA by Gender: Between 2005/06 and 2009/10, male students, on average, had comparable GPAs to their female student counterpart (2.80 & 2.81, respectively). The annual average GPA of both male and female students at Miramar College were higher compared to the average annual GPA of the male and female student populations of all colleges in the district (2.62 & 2.71, respectively). The average annual GPA of the female student population at Miramar was higher than the average annual GPA of the Miramar College general student population (2.80) and the average annual GPA of the general student population of all colleges in the district (2.67). The average annual GPA of male students at Miramar College was comparable to or exceeded the same averages.

Figure 3.10. Miramar College Annual GPA by Gender

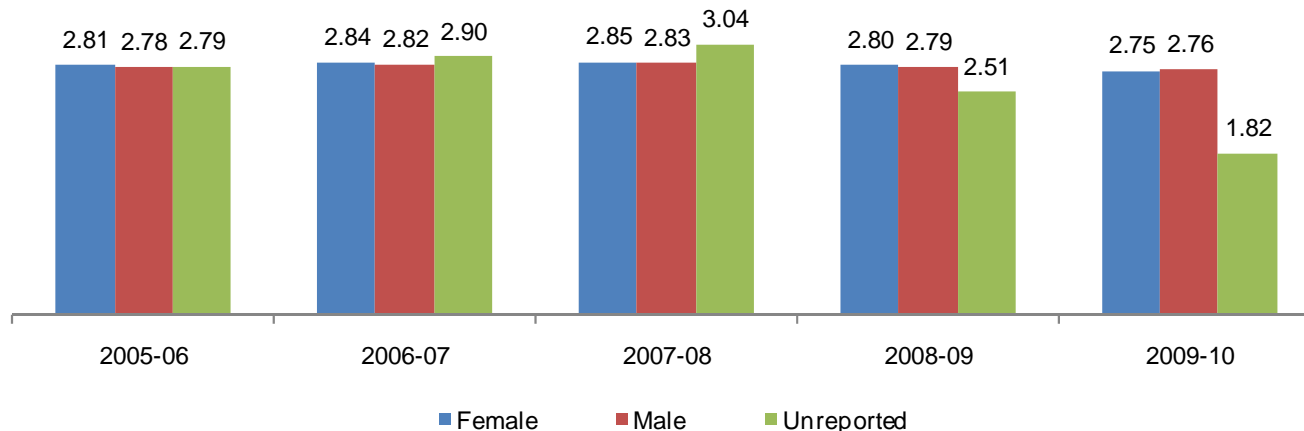


Table 3.10. Miramar College Annual GPA by Gender

	2005-06	2006-07	2007-08	2008-09	2009-10	College Average 2005-10	All Colleges Average 2005-10
Female	2.81	2.84	2.85	2.80	2.75	2.81	2.71
Male	2.78	2.82	2.83	2.79	2.76	2.80	2.62
Unreported	2.79	2.90	3.04	2.51	1.82	2.84	2.66
Average	2.79	2.83	2.84	2.79	2.75	2.80	2.67

Source: SDCCD Information System

Miramar College Section III: Student Outcomes (Annual GPA)

Annual GPA by Ethnicity: Both Asian/Pacific Islander and White students had the highest GPAs (2.82 & 2.96, respectively) on average between 2005/06 and 2009/10. The average annual GPA of American Indian students (2.71) was lower than the average annual GPA of Miramar College's general student population (2.80), however, was higher compared to the average annual GPA of the general student population of all colleges in the district (2.67). The average annual GPAs of African American, Filipino, Latino, and students categorized as 'Other' ethnicities were lower than the average annual GPAs of both the general student populations at Miramar College and all colleges in the district. The average annual GPAs of Asian/Pacific Islander and White students exceeded the same averages.

Figure 3.11. Miramar College Annual GPA by Ethnicity

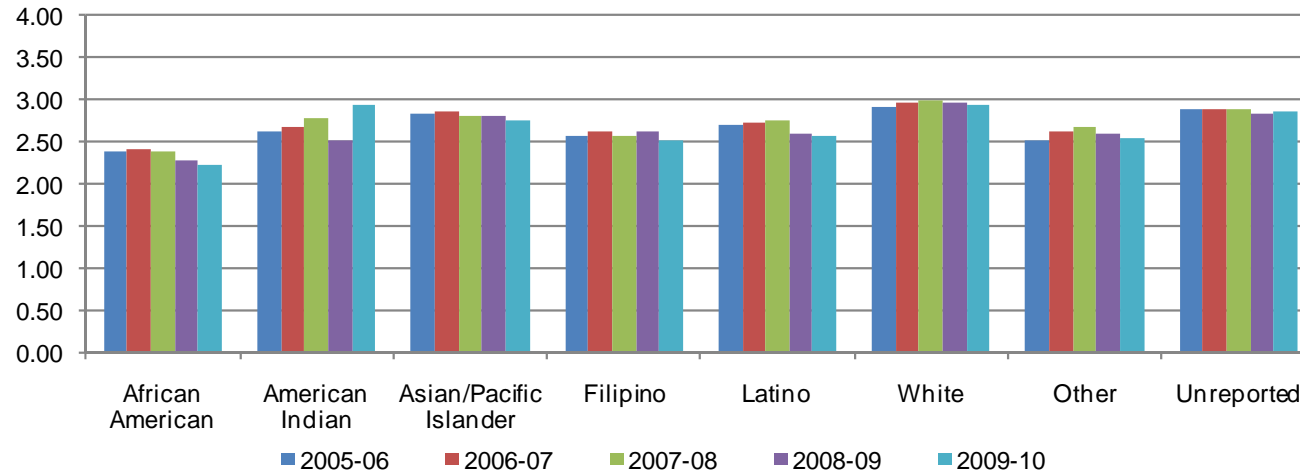


Table 3.11. Miramar College Annual GPA by Ethnicity

	2005-06	2006-07	2007-08	2008-09	2009-10	College Average 2005-10	All Colleges Average 2005-10
African American	2.40	2.43	2.38	2.29	2.23	2.34	2.22
American Indian	2.62	2.68	2.79	2.52	2.94	2.71	2.57
Asian/Pacific Islander	2.84	2.87	2.82	2.83	2.77	2.82	2.79
Filipino	2.58	2.63	2.59	2.64	2.52	2.60	2.60
Latino	2.70	2.73	2.76	2.61	2.58	2.67	2.43
White	2.93	2.96	3.01	2.96	2.94	2.96	2.86
Other	2.53	2.62	2.67	2.60	2.56	2.59	2.57
Unreported	2.90	2.88	2.88	2.85	2.86	2.87	2.79
Average	2.79	2.83	2.84	2.79	2.75	2.80	2.67

Source: SDCCD Information System

Miramar College Section III: Student Outcomes (Annual GPA)

Annual GPA by Age: Between 2005/06 and 2009/10, the age groups with the highest GPAs, on average, were students between 40 and 49 years old (3.30), students who were age 50 and older (3.26), and students ages 30 to 39 (3.15). The average annual GPA of students who were between ages 18-24 (2.56) were lower than the average annual GPAs of both the general student populations at Miramar College and all colleges in the district (2.80 & 2.67, respectively). The average annual GPAs of all other age groups exceeded the same averages.

Figure 3.12. Miramar College Annual GPA by Age

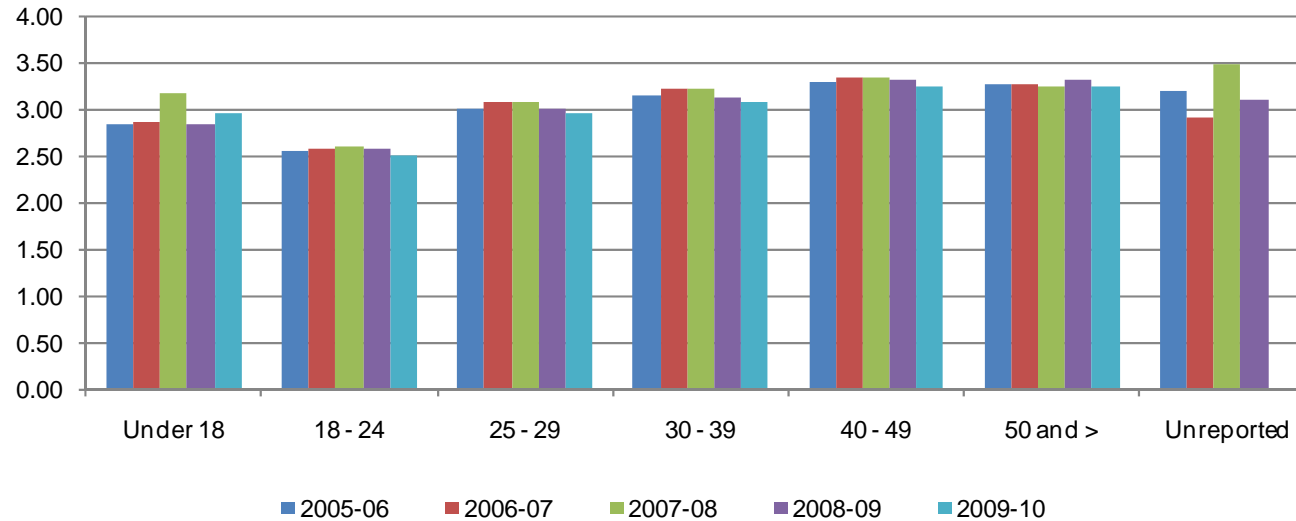


Table 3.12. Miramar College Annual GPA by Age

	2005-06	2006-07	2007-08	2008-09	2009-10	College Average 2005-10	All Colleges Average 2005-10
Under 18	2.84	2.87	3.17	2.84	2.97	2.95	2.96
18 - 24	2.56	2.58	2.59	2.57	2.51	2.56	2.48
25 - 29	3.01	3.07	3.09	3.00	2.97	3.03	2.87
30 - 39	3.15	3.21	3.21	3.13	3.06	3.15	2.97
40 - 49	3.30	3.33	3.35	3.31	3.24	3.30	3.05
50 and >	3.27	3.26	3.24	3.31	3.24	3.26	3.09
Unreported	3.20	2.91	3.48	3.10	---	---	2.81
Average	2.79	2.83	2.84	2.79	2.75	2.80	2.67

Source: SDCCD Information System

Miramar College Section III: Student Outcomes (Annual Awards Conferred)

Annual Awards Conferred: Overall, the trends for the type of awards conferred showed large fluctuations between 2005/06 and 2009/10. On average, 57% of the total awards conferred at Miramar College were associate degrees. The number of certificates requiring 30 to 59 units showed the greatest increase of 77%, from 154 in 2005/06 to 272 in 2009/10. In contrast, the number of awarded certificates that require 29 or fewer units decreased 27%, from 278 in 2005/06 to 203 in 2009/10. The number of associate degrees awarded at Miramar College, on average, was 9% less than the number of associate degrees conferred within all colleges in the district.

Figure 3.13. Miramar College Overall Annual Awards Conferred

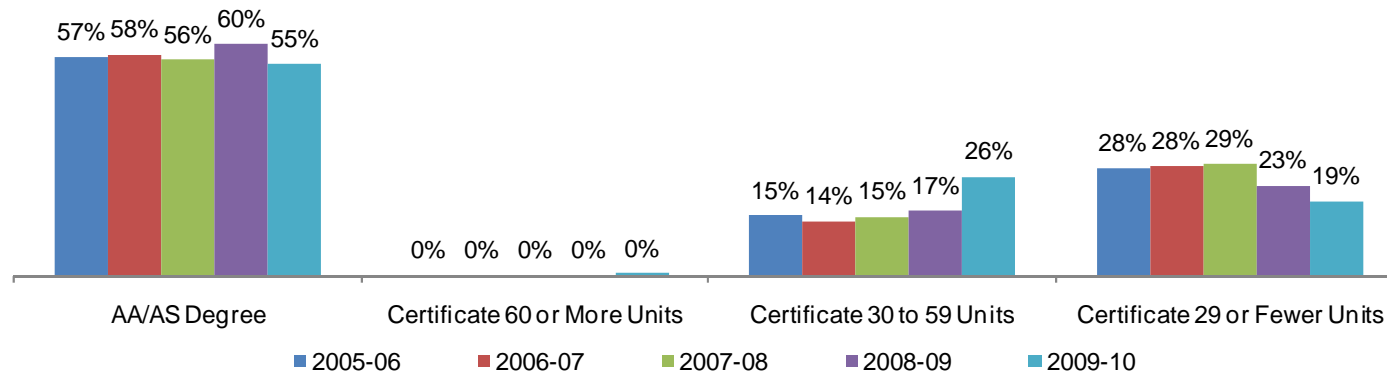


Table 3.13. Miramar College Overall Annual Awards Conferred

	2005-06		2006-07		2007-08		2008-09		2009-10		% Change 05/06-09/10	College Average 05/06-09/10	All Colleges Average 05/06-09/10
AA/AS Degree	568	57%	473	58%	452	56%	546	60%	580	55%	2%	57%	66%
Certificate 60 or More Units	0	0%	0	0%	0	0%	0	0%	2	0%	--	0%	1%
Certificate 30 to 59 Units	154	15%	116	14%	123	15%	152	17%	272	26%	77%	18%	15%
Certificate 29 or Fewer Units	278	28%	233	28%	232	29%	212	23%	203	19%	-27%	25%	18%
Total	1,000	100%	822	100%	807	100%	910	100%	1,057	100%	6%	100%	100%

Source: SDCCD Information System

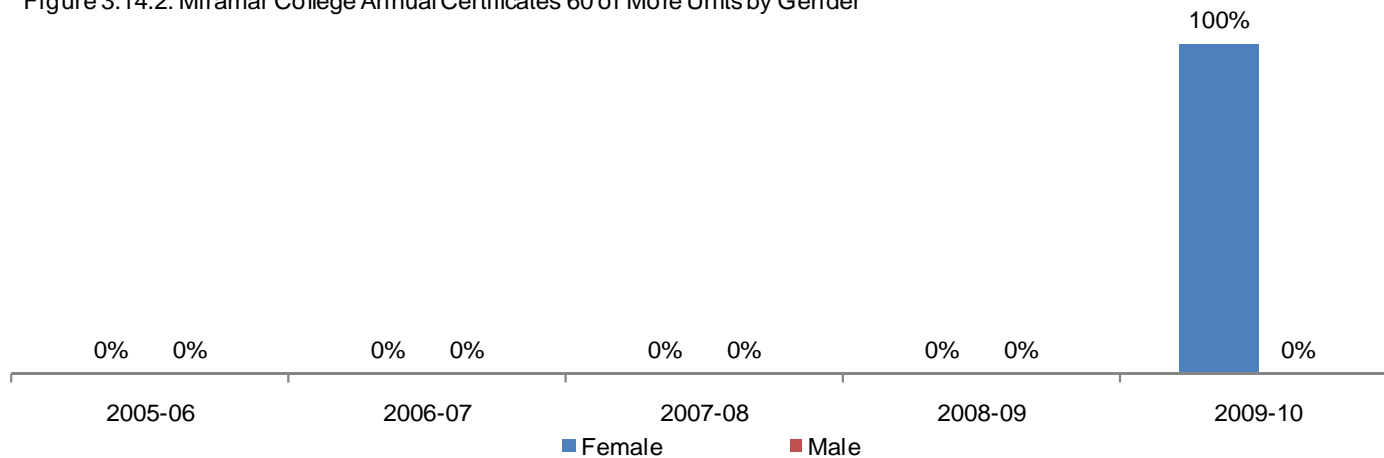
Miramar College Section III: Student Outcomes (Annual Awards Conferred)

Annual Awards Conferred by Gender: Of the total awards conferred at Miramar College, both male (50%) and female (50%) students, on average, received relatively the same amount of associate degrees between 2005/06 and 2009/10. Female students displayed an increased trend for associates degrees awarded (4%), while male students showed no change in associates degrees awarded (0%) between 2005/06 and 2009/10. For certificates requiring 30 to 59 units, both male and female students showed an increased trend between 2005/06 and 2009/10 (84% & 66%, respectively). From 2005/06 to 2009/10, with the exception of the award category for 60 or more units completed, female students consistently earned a disproportionately low number of awards at Miramar College compared to the female student population of all colleges in the district. Male students exhibited the opposite pattern.

Figure 3.14.1. Miramar College Annual AA/AS Degrees by Gender



Figure 3.14.2. Miramar College Annual Certificates 60 or More Units by Gender



Miramar College Section III: Student Outcomes (Annual Awards Conferred)

Figure 3.14.3. Miramar College Annual Certificates 30 to 59 Units by Gender

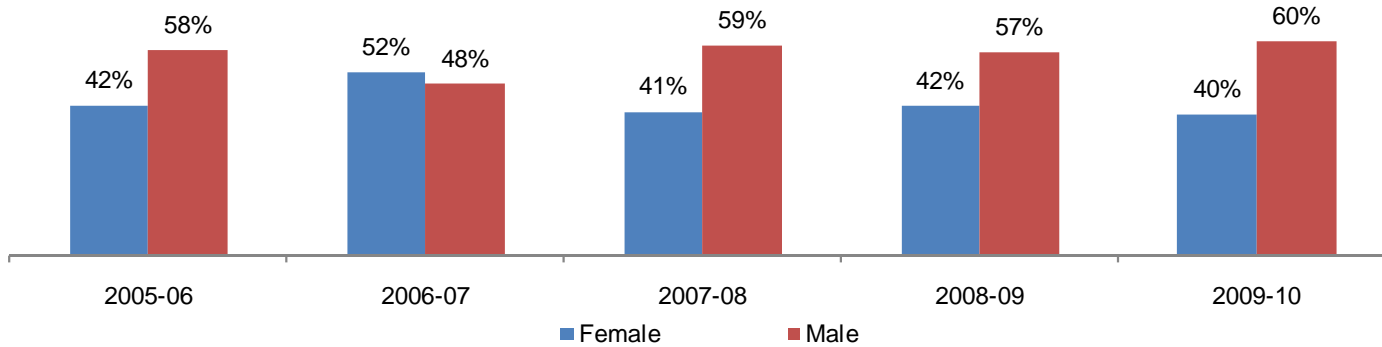
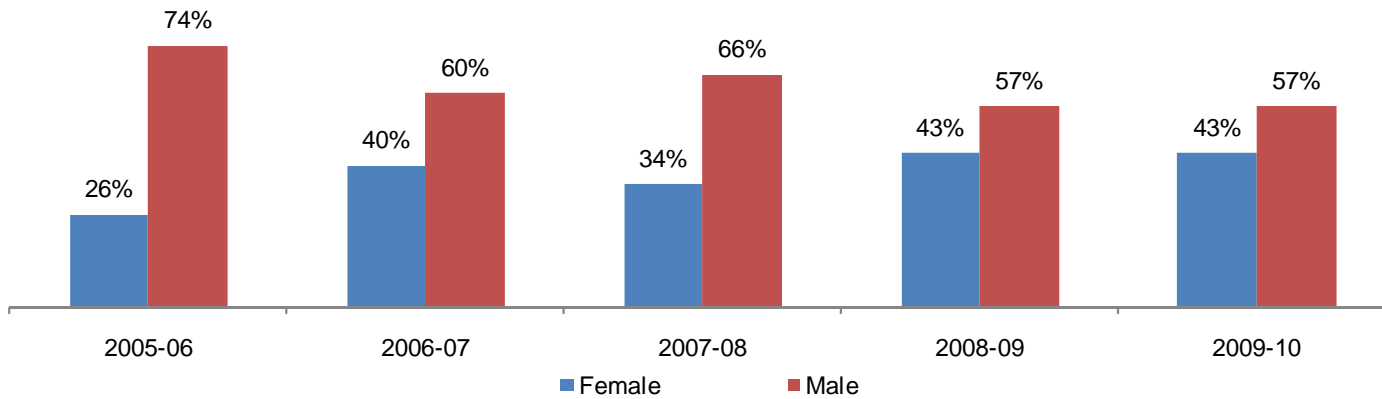


Figure 3.14.4. Miramar College Annual Certificates 29 or Fewer Units by Gender



Miramar College Section III: Student Outcomes (Annual Awards Conferred)

Table 3.14. Miramar College Annual Awards Conferred by Gender

		2005-06		2006-07		2007-08		2008-09		2009-10		% Change 05/06-09/10	College Average 05/06-09/10	All Colleges Average 05/06-09/10
AA/AS Degree	Female	288	51%	238	50%	226	50%	259	47%	300	52%	4%	50%	57%
	Male	280	49%	234	49%	226	50%	286	52%	280	48%	0%	50%	43%
	Unreported	0	0%	1	0%	0	0%	1	0%	0	0%	0%	0%	0%
	Total	568	100%	473	100%	452	100%	546	100%	580	100%	2%	100%	100%
Certificate 60 or More Units	Female	0	0%	0	0%	0	0%	0	0%	2	100%	--	100%	63%
	Male	0	0%	0	0%	0	0%	0	0%	0	0%	--	0%	38%
	Unreported	0	0%	0	0%	0	0%	0	0%	0	0%	--	0%	0%
	Total	0	0%	0	0%	0	0%	0	0%	2	100%	--	100%	100%
Certificate 30 to 59 units	Female	65	42%	60	52%	50	41%	64	42%	108	40%	66%	42%	52%
	Male	89	58%	56	48%	73	59%	87	57%	164	60%	84%	57%	48%
	Unreported	0	0%	0	0%	0	0%	1	1%	0	0%	--	0%	0%
	Total	154	100%	116	100%	123	100%	152	100%	272	100%	77%	100%	100%
Certificate 29 or Fewer Units	Female	73	26%	93	40%	80	34%	92	43%	88	43%	21%	37%	41%
	Male	205	74%	140	60%	152	66%	120	57%	115	57%	-44%	63%	59%
	Unreported	0	0%	0	0%	0	0%	0	0%	0	0%	--	0%	0%
	Total	278	100%	233	100%	232	100%	212	100%	203	100%	-27%	100%	100%
Grand Total		1,000	100%	822	100%	807	100%	910	100%	1,057	100%	6%	100%	100%

Source: SDCCD Information System

Miramar College Section III: Student Outcomes (Annual Awards Conferred)

Annual Awards Conferred by Ethnicity: With the exception of Filipino and Latino students, the number of associate degrees conferred at Miramar College increased for all other ethnicities between 2005/06 and 2009/10. From 2005/06 to 2009/10, White students received the most awards across most of the award categories, with the exception of the award category for 60 or more units completed. Asian/Pacific Islander students had the second highest number of associate degrees and certificates requiring 30 to 59 units conferred. Furthermore, both Asian/Pacific Islander and Latino students had the second highest number of certificates requiring 29 or fewer units on average (15% each). Both African American and Latino students at Miramar College were consistently underrepresented across all award categories when compared to the same ethnic student populations of all colleges in the district, while both White and Asian/Pacific Islander students were overrepresented across most of the award categories when compared to the same ethnic student populations of all colleges in the district.

Figure 3.15.1. Miramar College Annual AA/AS Degrees by Ethnicity

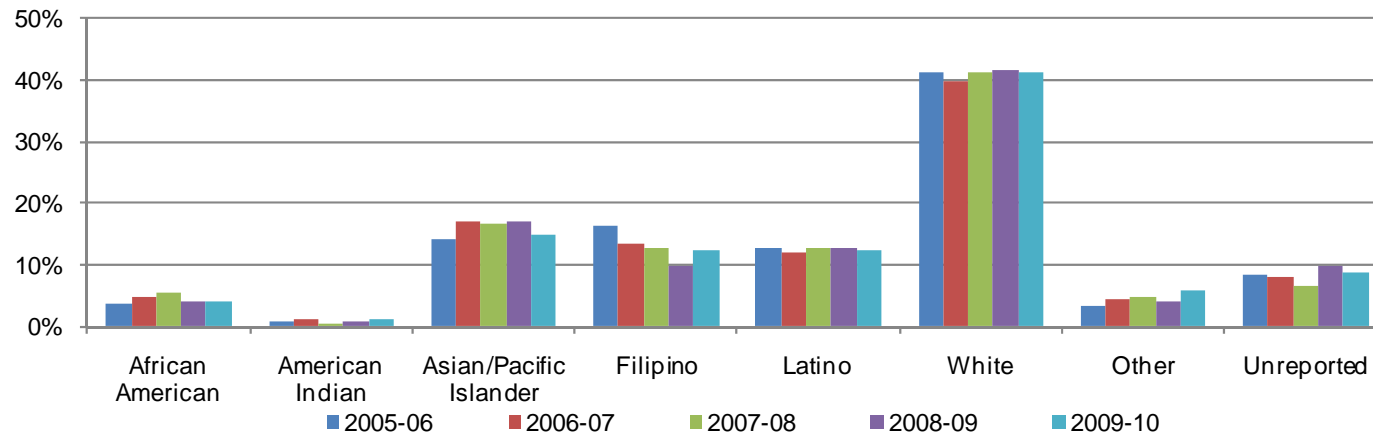
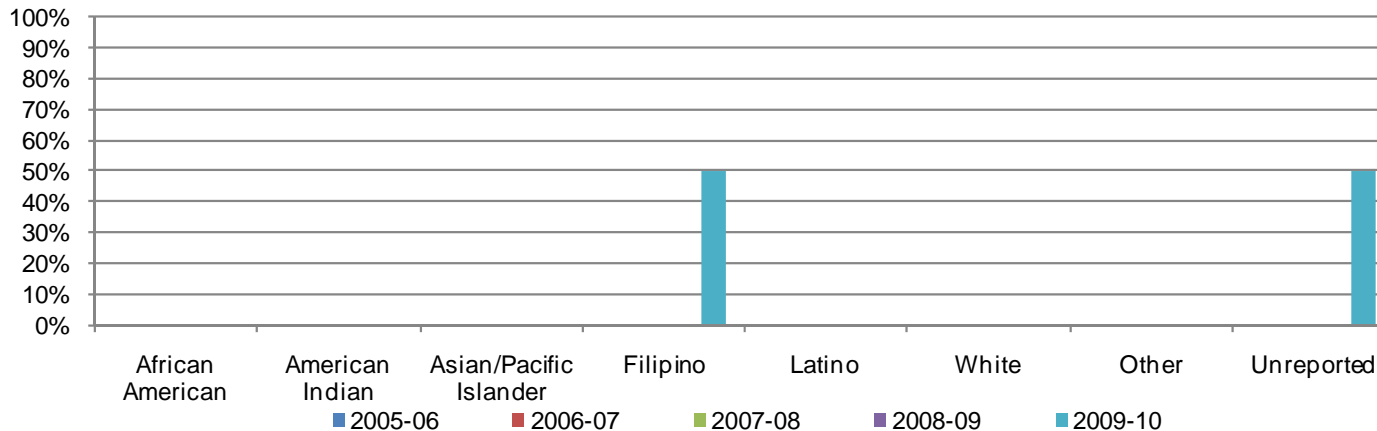


Figure 3.15.2. Miramar College Annual Certificates 60 or More Units by Ethnicity



Miramar College Section III: Student Outcomes (Annual Awards Conferred)

Figure 3.15.3. Miramar College Annual Certificates 30 to 59 Units by Ethnicity

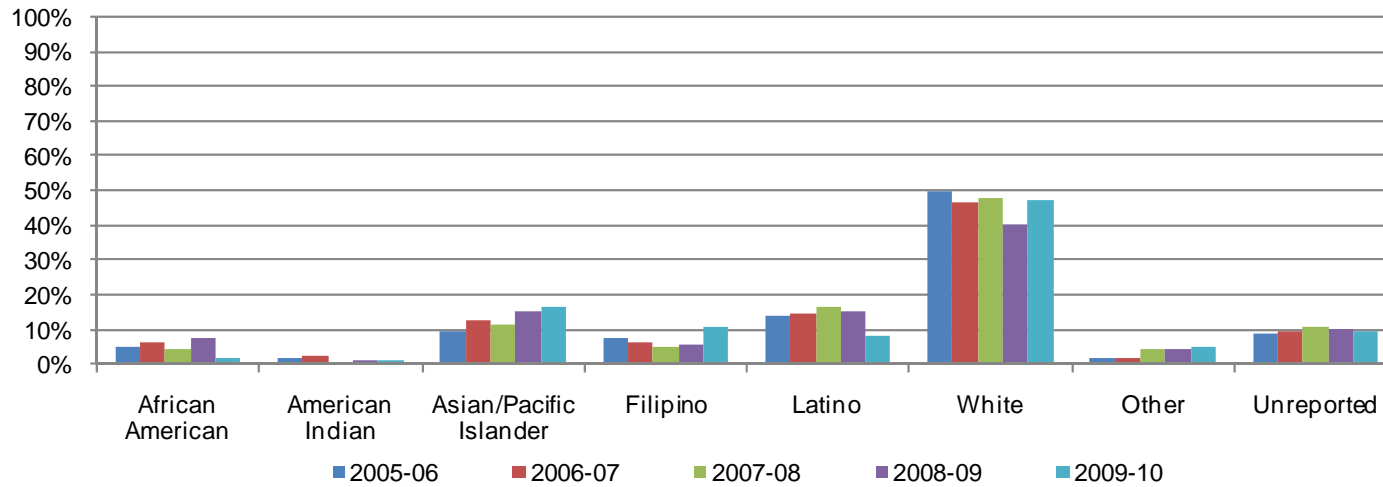
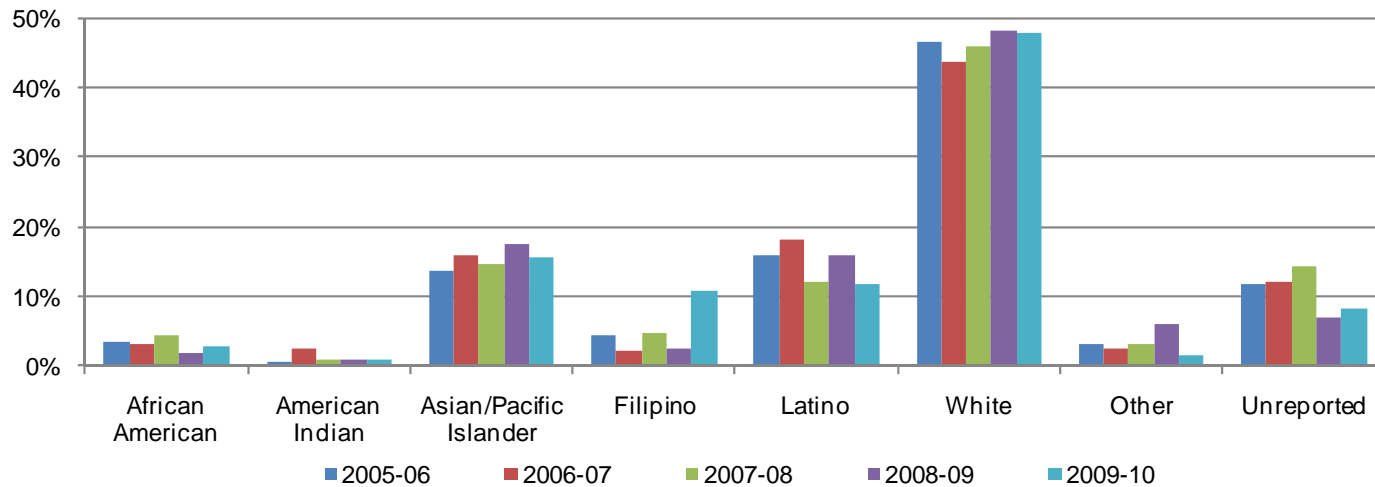


Figure 3.15.4. Miramar College Annual Certificates 29 or Fewer Units by Ethnicity



Miramar College Section III: Student Outcomes (Annual Awards Conferred)

Table 3.15. Miramar College Annual Awards Conferred by Ethnicity

		2005-06		2006-07		2007-08		2008-09		2009-10		% Change 05/06-09/10	College Average 05/06-09/10	All Colleges Average 05/06-09/10
AA/AS Degree	African American	21	4%	23	5%	25	6%	22	4%	24	4%	14%	4%	8%
	American Indian	4	1%	5	1%	2	0%	5	1%	7	1%	75%	1%	1%
	Asian/Pacific Islander	80	14%	80	17%	75	17%	93	17%	86	15%	8%	16%	13%
	Filipino	92	16%	63	13%	57	13%	53	10%	71	12%	-23%	13%	7%
	Latino	71	13%	56	12%	57	13%	70	13%	71	12%	0%	12%	19%
	White	234	41%	188	40%	186	41%	227	42%	238	41%	2%	41%	40%
	Other	19	3%	21	4%	21	5%	22	4%	33	6%	74%	4%	4%
	Unreported	47	8%	37	8%	29	6%	54	10%	50	9%	6%	8%	9%
	Total	568	100%	473	100%	452	100%	546	100%	580	100%	2%	100%	100%
Certificate 60 or More Units	African American	0	0%	0	0%	0	0%	0	0%	0	0%	--	0%	5%
	American Indian	0	0%	0	0%	0	0%	0	0%	0	0%	--	0%	0%
	Asian/Pacific Islander	0	0%	0	0%	0	0%	0	0%	0	0%	--	0%	13%
	Filipino	0	0%	0	0%	0	0%	0	0%	1	50%	--	50%	13%
	Latino	0	0%	0	0%	0	0%	0	0%	0	0%	--	0%	15%
	White	0	0%	0	0%	0	0%	0	0%	0	0%	--	0%	36%
	Other	0	0%	0	0%	0	0%	0	0%	0	0%	--	0%	1%
	Unreported	0	0%	0	0%	0	0%	0	0%	1	50%	--	50%	17%
	Total	0	0%	0	0%	0	0%	0	0%	2	100%	--	100%	100%

Source: SDCCD Information System

Miramar College Section III: Student Outcomes (Annual Awards Conferred)

Table 3.15. Miramar College Annual Awards Conferred by Ethnicity (Continued)

		2005-06		2006-07		2007-08		2008-09		2009-10		% Change 05/06-09/10	College Average 05/06-09/10	All Colleges Average 05/06-09/10
Certificate 30 to 59 Units	African American	8	5%	7	6%	5	4%	12	8%	5	2%	-38%	5%	8%
	American Indian	3	2%	3	3%	1	1%	2	1%	4	1%	33%	2%	1%
	Asian/Pacific Islander	15	10%	15	13%	14	11%	23	15%	45	17%	200%	14%	12%
	Filipino	12	8%	7	6%	6	5%	9	6%	29	11%	142%	8%	5%
	Latino	22	14%	17	15%	20	16%	23	15%	22	8%	0%	13%	18%
	White	77	50%	54	47%	59	48%	61	40%	128	47%	66%	46%	44%
	Other	3	2%	2	2%	5	4%	7	5%	13	5%	333%	4%	3%
	Unreported	14	9%	11	9%	13	11%	15	10%	26	10%	86%	10%	9%
	Total	154	100%	116	100%	123	100%	152	100%	272	100%	77%	100%	100%
Certificate 29 or Fewer Units	African American	10	4%	7	3%	10	4%	4	2%	6	3%	-40%	3%	7%
	American Indian	2	1%	6	3%	2	1%	2	1%	2	1%	0%	1%	1%
	Asian/Pacific Islander	38	14%	37	16%	34	15%	37	17%	32	16%	-16%	15%	12%
	Filipino	12	4%	5	2%	11	5%	5	2%	22	11%	83%	5%	4%
	Latino	44	16%	42	18%	28	12%	34	16%	24	12%	-45%	15%	24%
	White	130	47%	102	44%	107	46%	102	48%	97	48%	-25%	46%	41%
	Other	9	3%	6	3%	7	3%	13	6%	3	1%	-67%	3%	3%
	Unreported	33	12%	28	12%	33	14%	15	7%	17	8%	-48%	11%	7%
	Total	278	100%	233	100%	232	100%	212	100%	203	100%	-27%	100%	100%
Grand Total	1,000	100%	822	100%	807	100%	910	100%	1,057	100%	6%	100%	100%	

Source: SDCCD Information System

Miramar College Section III: Student Outcomes (Annual Awards Conferred)

Annual Awards Conferred by Age: Approximately two-thirds of the total number of associate degrees and half of the certificates requiring 60 or more units awarded between 2005/06 and 2009/10 were to students between ages 18-29 years old on average. Students between ages 25 and 29 years old consistently displayed a trend of receiving approximately one-quarter or more of the awards within each award category. Students between ages 18-24 years old were overrepresented in most of the number of awards received at Miramar College when compared to the same age group of all colleges in the district. However, students ages 30-39 showed the greatest disparity in the number of awards received between 2005/06 and 2009/10.

Figure 3.16.1. Miramar College Annual AA/AS Degrees by Age

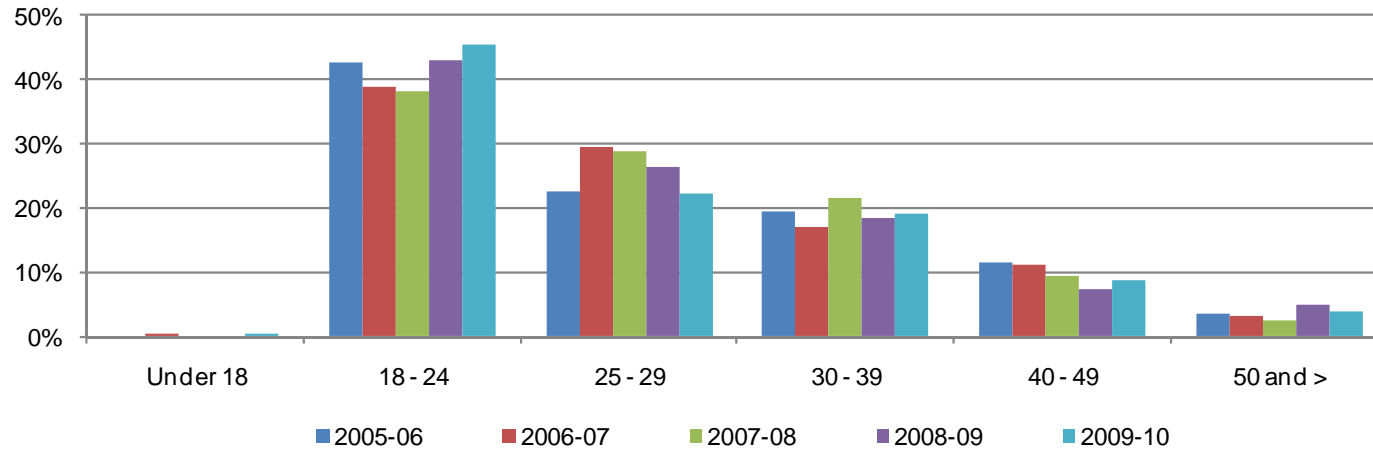
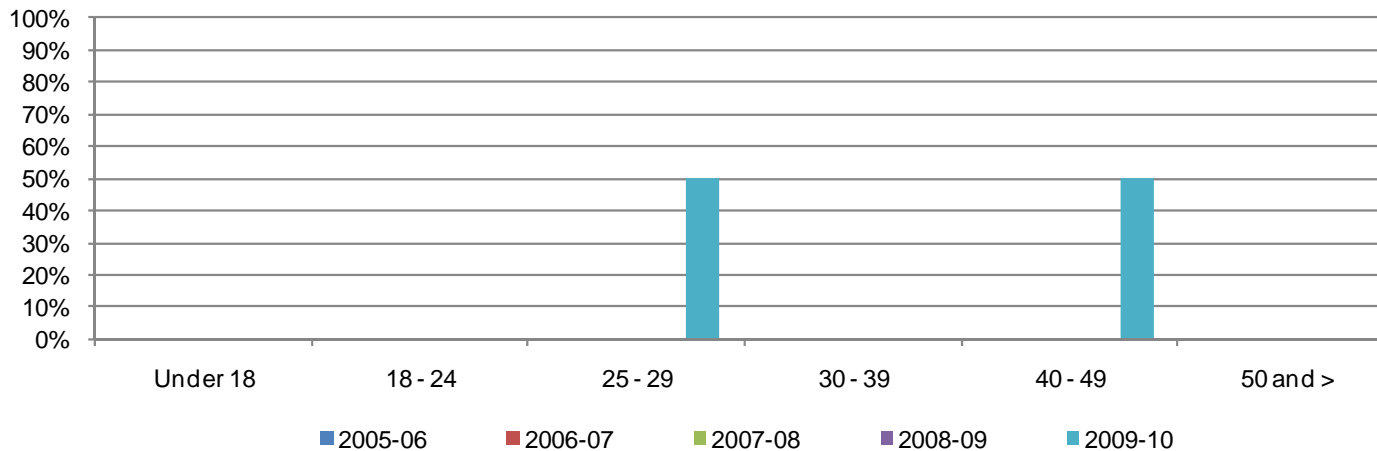


Figure 3.16.2. Miramar College Annual Certificates 60 or More Units by Age



Miramar College Section III: Student Outcomes (Annual Awards Conferred)

Figure 3.16.3. Miramar College Annual Certificates 30 to 59 Units by Age

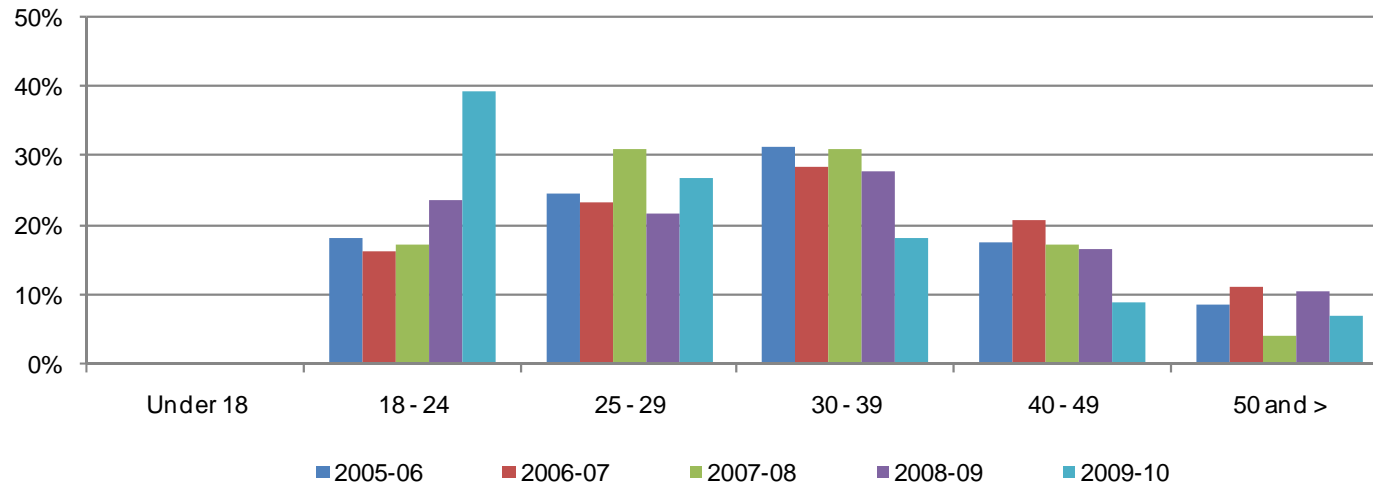
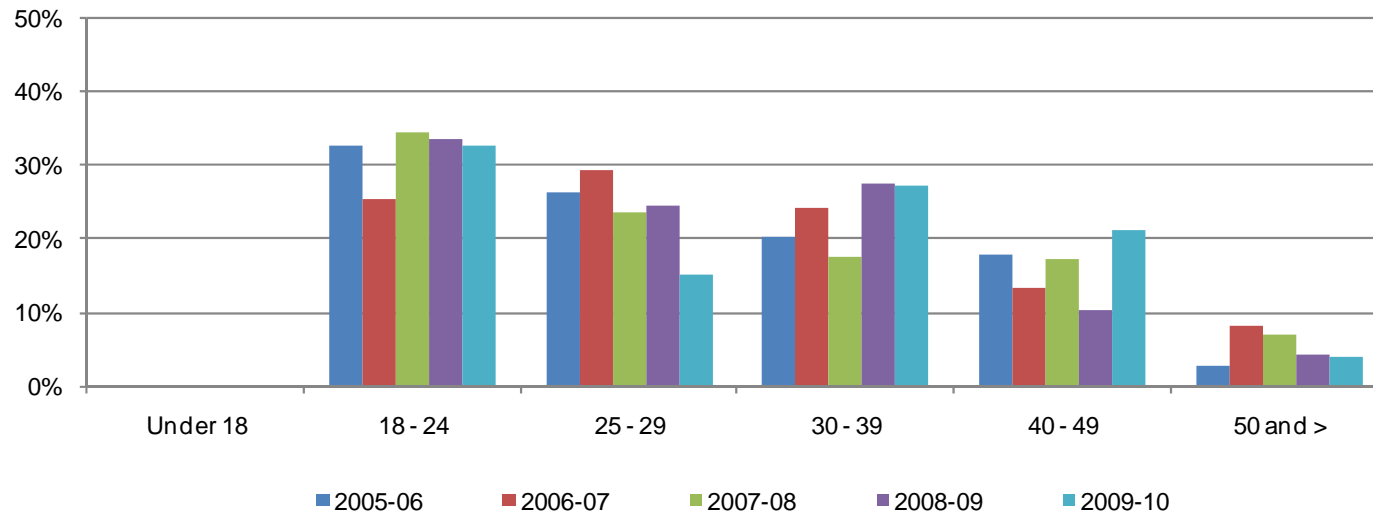


Figure 3.16.4. Miramar College Annual Certificates 29 or Fewer Units by Age



Miramar College Section III: Student Outcomes (Annual Awards Conferred)

Table 3.16. Miramar College Annual Awards Conferred by Age

		2005-06		2006-07		2007-08		2008-09		2009-10		% Change 05/06-09/10	College Average 05/06-09/10	All Colleges Average 05/06-09/10
AA/AS Degree	Under 18	0	0%	1	0%	0	0%	0	0%	2	0%	--	0%	0%
	18 - 24	243	43%	184	39%	172	38%	235	43%	263	45%	8%	42%	39%
	25 - 29	128	23%	139	29%	130	29%	144	26%	129	22%	1%	26%	26%
	30 - 39	111	20%	80	17%	97	21%	100	18%	112	19%	1%	19%	21%
	40 - 49	65	11%	53	11%	42	9%	40	7%	51	9%	-22%	10%	10%
	50 and >	21	4%	16	3%	11	2%	27	5%	23	4%	10%	4%	5%
	Total	568	100%	473	100%	452	100%	546	100%	580	100%	2%	100%	100%
Certificate 60 or More Units	Under 18	0	0%	0	0%	0	0%	0	0%	0	0%	--	0%	0%
	18 - 24	0	0%	0	0%	0	0%	0	0%	0	0%	--	0%	14%
	25 - 29	0	0%	0	0%	0	0%	0	0%	1	50%	--	50%	30%
	30 - 39	0	0%	0	0%	0	0%	0	0%	0	0%	--	0%	31%
	40 - 49	0	0%	0	0%	0	0%	0	0%	1	50%	--	50%	20%
	50 and >	0	0%	0	0%	0	0%	0	0%	0	0%	--	0%	5%
	Total	0	0%	0	0%	0	0%	0	0%	2	100%	--	100%	100%
Certificate 30 to 59 Units	Under 18	0	0%	0	0%	0	0%	0	0%	0	0%	--	0%	0%
	18 - 24	28	18%	19	16%	21	17%	36	24%	107	39%	282%	26%	22%
	25 - 29	38	25%	27	23%	38	31%	33	22%	73	27%	92%	26%	23%
	30 - 39	48	31%	33	28%	38	31%	42	28%	49	18%	2%	26%	26%
	40 - 49	27	18%	24	21%	21	17%	25	16%	24	9%	-11%	15%	18%
	50 and >	13	8%	13	11%	5	4%	16	11%	19	7%	46%	8%	11%
	Total	154	100%	116	100%	123	100%	152	100%	272	100%	77%	100%	100%
Certificate 29 or Fewer Units	Under 18	0	0%	0	0%	0	0%	0	0%	0	0%	--	0%	0%
	18 - 24	91	33%	59	25%	80	34%	71	33%	66	33%	-27%	32%	22%
	25 - 29	73	26%	68	29%	55	24%	52	25%	31	15%	-58%	24%	25%
	30 - 39	56	20%	56	24%	41	18%	58	27%	55	27%	-2%	23%	28%
	40 - 49	50	18%	31	13%	40	17%	22	10%	43	21%	-14%	16%	16%
	50 and >	8	3%	19	8%	16	7%	9	4%	8	4%	0%	5%	9%
	Total	278	100%	233	100%	232	100%	212	100%	203	100%	-27%	100%	100%
Grand Total	1,000	100%	822	100%	807	100%	910	100%	1,057	100%	6%	100%	100%	

Source: SDCCD Information System

Miramar College Section III: Student Outcomes (Annual Transfer Volume)

Annual Transfer Volume: The annual transfer volume for Miramar College increased 116%, from 294 in 2005/06 to 635 in 2009/10.

Figure 3.17. Miramar College Overall Annual Transfers

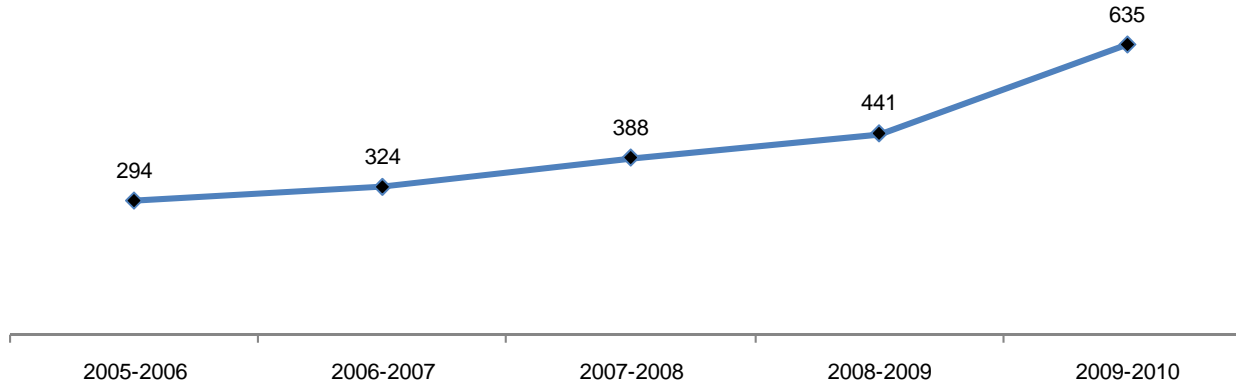


Table 3.17. Miramar College Overall Annual Transfers

	2005-2006	2006-2007	2007-2008	2008-2009	2009-2010	% Change 05/06-09/10
Total	294	324	388	441	635	116%

Source: SDCCD Information System

Miramar College Section III: Student Outcomes (Annual Transfer Volume)

Annual Transfer Volume by Gender: Between 2005/06 and 2009/10, female students (52%) had a higher transfer volume, on average, compared to their male student (48%) counterpart. The transfer volume for both male and female students increased between 2005/06 and 2009/10 (104% & 127%, respectively).

Figure 3.18. Miramar College Annual Transfers by Gender



Table 3.18. Miramar College Annual Transfers by Gender

	2005-06		2006-07		2007-08		2008-09		2009-10		% Change 05/06-09/10	College Average 05/06-09/10	All Colleges Average 05/06-09/10
Female	150	51%	148	46%	182	47%	256	58%	340	54%	127%	52%	52%
Male	144	49%	176	54%	205	53%	185	42%	294	46%	104%	48%	48%
Unreported	0	0%	0	0%	1	0%	0	0%	1	0%	100%	0%	0%
Total	294	100%	324	100%	388	100%	441	100%	635	100%	116%	100%	100%

Source: SDCCD Information System

Miramar College Section III: Student Outcomes (Annual Transfer Volume)

Annual Transfer Volume by Ethnicity: Of all the students who transferred from Miramar College, approximately half were White students (44%) on average. Ethnic groups with the second and third highest transfer volumes were Asian/Pacific Islanders students (17%) and Filipino students (12%) between 2005/06 and 2009/10. Most of the ethnic groups displayed an increased trend in transfer volume, with the exception of African American students, which remained stagnate for the most part. Latino students nearly tripled (175%) in transfer volume, from 28 in 2005/06 to 77 in 2009/10.

Figure 3.19. Miramar College Annual Transfers by Ethnicity

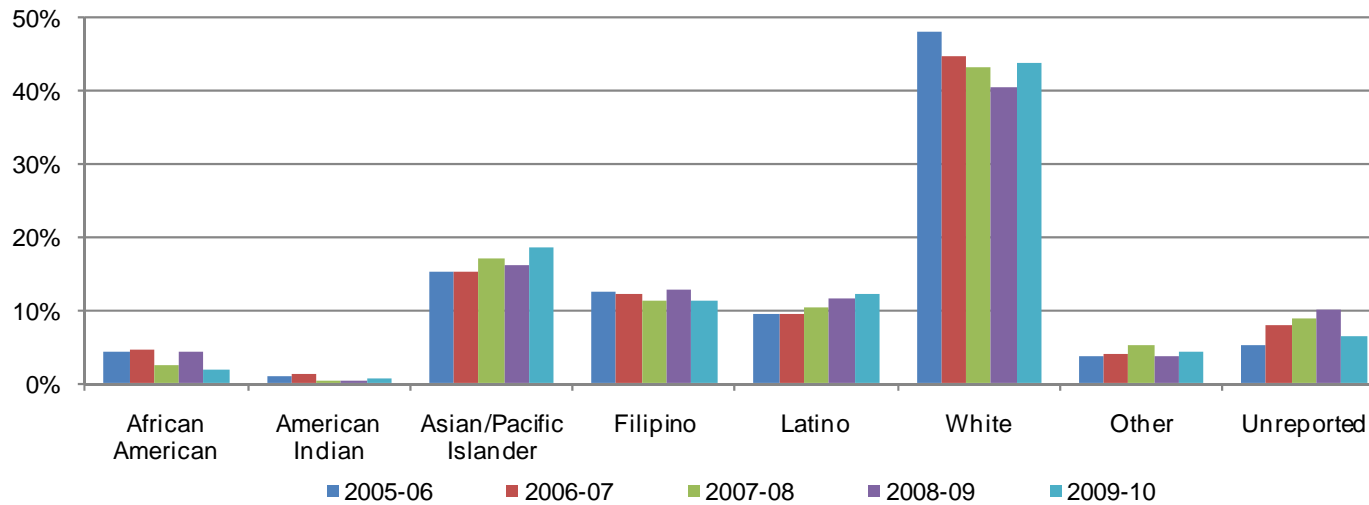


Table 3.19. Miramar College Annual Transfers by Ethnicity

	2005-06		2006-07		2007-08		2008-09		2009-10		% Change 05/06-09/10	College Average 05/06-09/10	All Colleges Average 05/06-09/10
African American	13	4%	15	5%	10	3%	19	4%	13	2%	0%	3%	5%
American Indian	3	1%	4	1%	2	1%	1	0%	5	1%	67%	1%	1%
Asian/Pacific Islander	45	15%	50	15%	67	17%	71	16%	119	19%	164%	17%	13%
Filipino	37	13%	40	12%	44	11%	57	13%	73	11%	97%	12%	5%
Latino	28	10%	31	10%	41	11%	52	12%	77	12%	175%	11%	15%
White	141	48%	145	45%	168	43%	179	41%	279	44%	98%	44%	48%
Other	11	4%	13	4%	21	5%	17	4%	27	4%	145%	4%	4%
Unreported	16	5%	26	8%	35	9%	45	10%	42	7%	163%	8%	10%
Total	294	100%	324	100%	388	100%	441	100%	635	100%	116%	100%	100%

Source: SDCCD Information System

Miramar College Section III: Student Outcomes (Annual Transfer Volume)

Annual Transfer Volume by Age: The age groups with the highest transfer volume, on average, were students ages 18-24 (63%), students between ages 25 and 29 years old (24%), and students ages 30 to 39 years old (10%) between 2005/06 and 2009/10. Most of the age groups displayed an increased trend in transfer volume, with the exception of students under age 18, which remained stagnate for the most part. Students ages 40-49 showed a 367% increase in transfer volume, from 3 in 2005/06 to 14 in 2009/10.

Figure 3.20. Miramar College Annual Transfers by Age

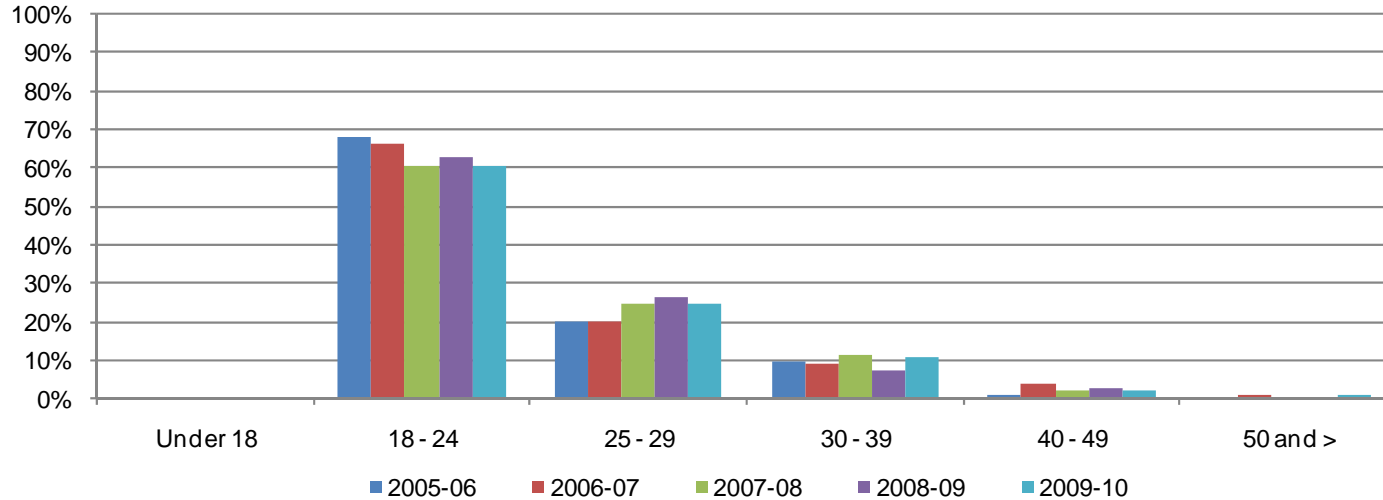


Table 3.20. Miramar College Annual Transfers by Age

	2005-06		2006-07		2007-08		2008-09		2009-10		% Change 05/06-09/10	College Average 05/06-09/10	All Colleges Average 05/06-09/10
Under 18	1	0%	0	0%	2	1%	0	0%	1	0%	0%	0%	0%
18 - 24	200	68%	215	66%	235	61%	278	63%	386	61%	93%	63%	64%
25 - 29	59	20%	65	20%	96	25%	117	27%	158	25%	168%	24%	24%
30 - 39	29	10%	29	9%	45	12%	33	7%	68	11%	134%	10%	9%
40 - 49	3	1%	12	4%	8	2%	12	3%	14	2%	367%	2%	2%
50 and >	2	1%	3	1%	2	1%	1	0%	8	1%	300%	1%	1%
Unreported	0	0%	0	0%	0	0%	0	0%	0	0%	0%	0%	0%
Total	294	100%	324	100%	388	100%	441	100%	635	100%	116%	100%	100%

Source: SDCCD Information System

Miramar College Section III: Student Outcomes (Annual Transfer Volume)

Annual Transfer Volume by CSU-UC/Private (In-State)/Out-of-State: On average, nearly half of the Miramar College transfer volume were students who transferred into the California State University system (CSU) (47%), followed by the University of California system (UC) (22%), Out-Of-State institutions (19%), and then In-State private institutions (12%). Students who transferred from Miramar College to an In-State private institution more than tripled in transfer volume (271%), from 28 in 2005/06 to 104 in 2009/10.

Figure 3.21. Miramar College Annual Transfers by CSU-UC/Private (In-State)/Out-of-State

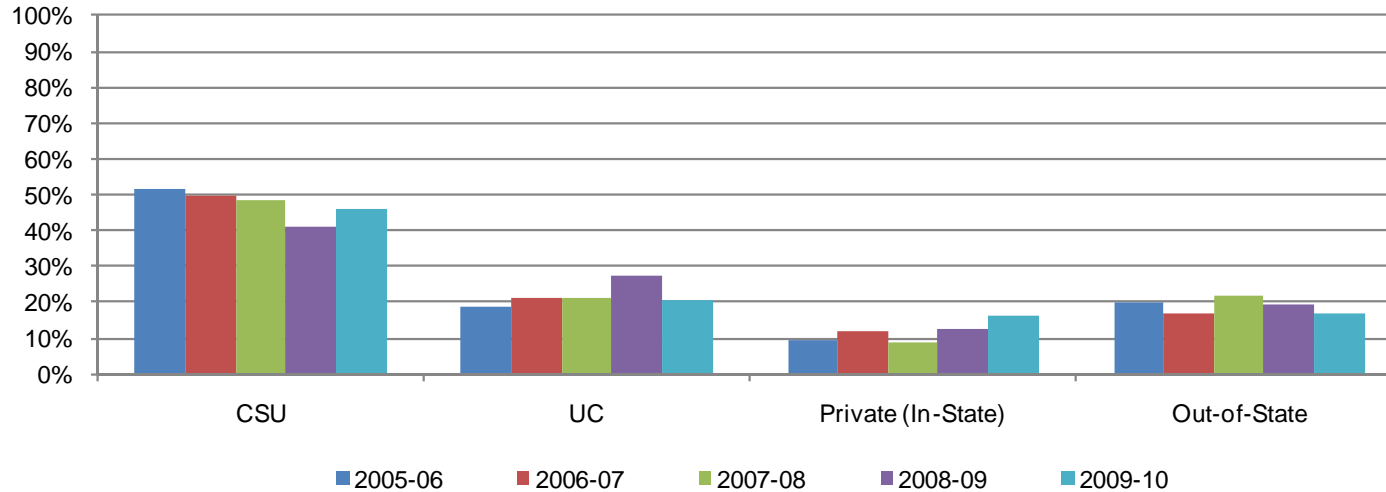


Table 3.21. Miramar College Annual Transfers by CSU-UC/Private (In-State)/Out-of-State

	2005-06		2006-07		2007-08		2008-09		2009-10		% Change 05/06-09/10	College Average 05/06-09/10	All Colleges Average 05/06-09/10
CSU	151	51%	161	50%	188	48%	181	41%	294	46%	95%	47%	47%
UC	56	19%	69	21%	82	21%	120	27%	131	21%	134%	22%	21%
Private (In-State)	28	10%	39	12%	34	9%	55	12%	104	16%	271%	12%	13%
Out-of-State	59	20%	55	17%	84	22%	85	19%	106	17%	80%	19%	19%
Total	294	100%	324	100%	388	100%	441	100%	635	100%	116%	100%	100%

Source: SDCCD Information System

Note: Out-of-State included both public and private 4-year institutions.

Miramar College Section III: Student Outcomes (Annual Transfer Volume)

Annual Transfer Volume by CSU/UC: Of the total Miramar College transfer volume (see table 3.17), 69% transferred into either the California State University (CSU) or University of California (UC) systems on average (47% & 22%, respectively). Of the total number of students who transferred to CSU or UC systems, the majority of students went to CSU (68%) and about one-third went to UC (32%) on average. Both the CSU and UC systems showed an increased trend in the number of students who transferred from Miramar College (95% & 134%, respectively) to their respective systems between 2005/06 and 2009/10.

Figure 3.22. Miramar College Annual Transfers by CSU/UC

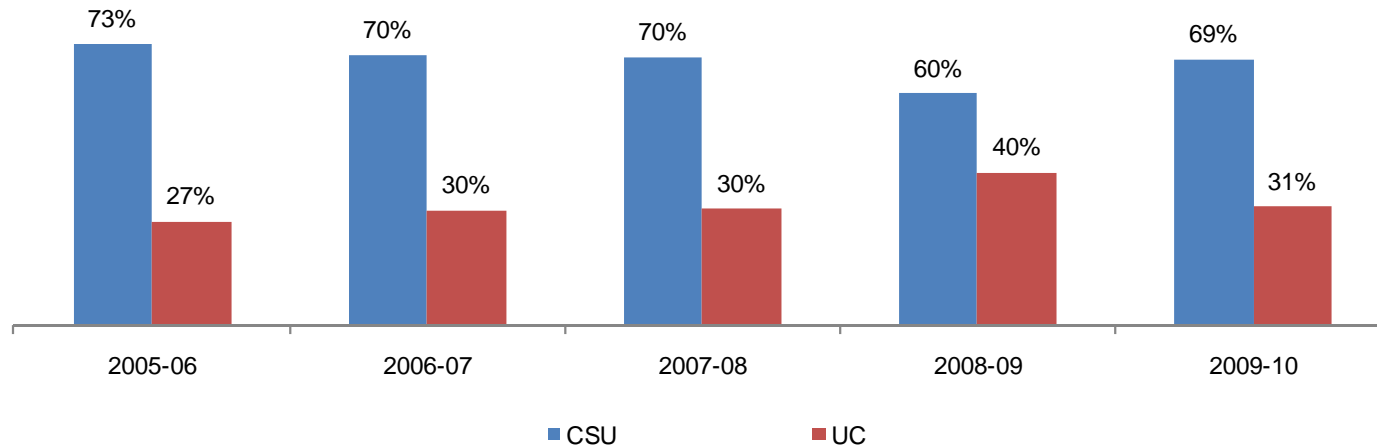


Table 3.22. Miramar College Annual Transfers by CSU/UC

	2005-06		2006-07		2007-08		2008-09		2009-10		% Change 05/06-09/10	College Average 05/06-09/10	All Colleges Average 05/06-09/10
CSU	151	73%	161	70%	188	70%	181	60%	294	69%	95%	68%	69%
UC	56	27%	69	30%	82	30%	120	40%	131	31%	134%	32%	31%
Total	207	100%	230	100%	270	100%	301	100%	425	100%	105%	100%	100%

Source: SDCCD Information System

Miramar College Section III: Student Outcomes (Annual Transfer Volume)

Annual Transfer Volume by Institution Type: Of those who transferred from Miramar College, 21% transferred to a private institution and 79% transferred to a public institution on average. Both public and private institutions displayed an increased trend in the number of students who transferred from Miramar College (94% & 232%, respectively) to their respective institutions between 2005/06 and 2009/10.

Figure 3.23. Miramar College Annual Transfers by Institution Type

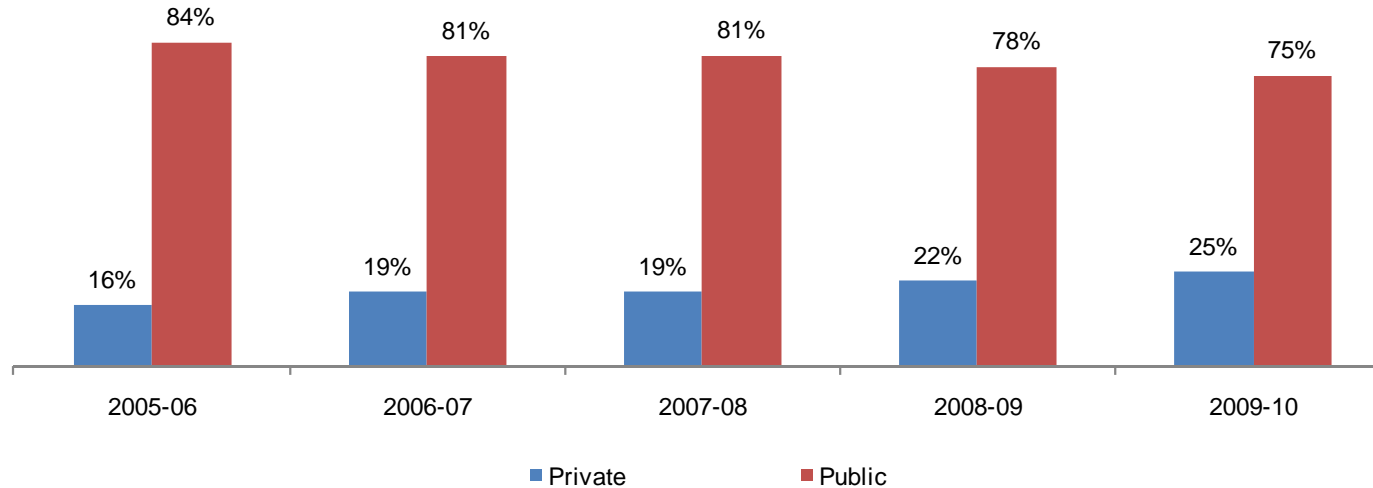


Table 3.23. Miramar College Annual Transfers by Institution Type

	2005-06		2006-07		2007-08		2008-09		2009-10		% Change 05/06-09/10	College Average 05/06-09/10	All Colleges Average 05/06-09/10
Private	47	16%	63	19%	75	19%	98	22%	156	25%	232%	21%	22%
Public	247	84%	261	81%	313	81%	343	78%	479	75%	94%	79%	78%
Total	294	100%	324	100%	388	100%	441	100%	635	100%	116%	100%	100%

Source: SDCCD Information System

Note: Public and Private included both Out-of-State and In-State 4-year institutions.

Section IV
Productivity and Efficiency

Miramar College Section IV: Productivity and Efficiency

This section of the Fact Book contains information on productivity and efficiency measures. The following describes in detail each of the measures:

- 1) FTES. The first measure reported in this section is a measure of productivity. FTES is a calculation of full-time equivalent students enrolled as of official census and is based on the total number of student contact hours. Starting in 2009-10 tutoring hours (course number 044) can only be claimed for Basic Skills classes at the credit colleges.
- 2) Enrollments. The second measure in this section of the report is also a measure of productivity. Enrollments are duplicated counts of students. The measure counts all of the classes in which a single student is enrolled compared to unduplicated headcount which counts the student only once regardless of the number of classes he/she may be enrolled in.
- 3) Fill Rates. The third measure reported in this section is a measure of efficiency. Fill rates are a calculation of the total enrollment capacity of a class over the total enrollments in the class.
- 4) Load. The fourth measure reported in this section is a measure of efficiency. Load is a calculation of the ratio of Weekly Student Contact Hours (WSCH) to Full-time Equivalent Faculty (WSCH/FTEF).

Miramar College Section IV: Productivity and Efficiency (FTES)

Annual FTES: Between 2005/06 and 2009/10, Miramar College showed a 6% increase in total FTES. For credit FTES, there was also a 6% increase, from 6,804 in 2005/06 to 7,186 in 2009/10. College non-credit FTES decreased 18% between 2005/06 to 2009/10.

Figure 4.1. Miramar College Resident & Non Resident Annual FTES

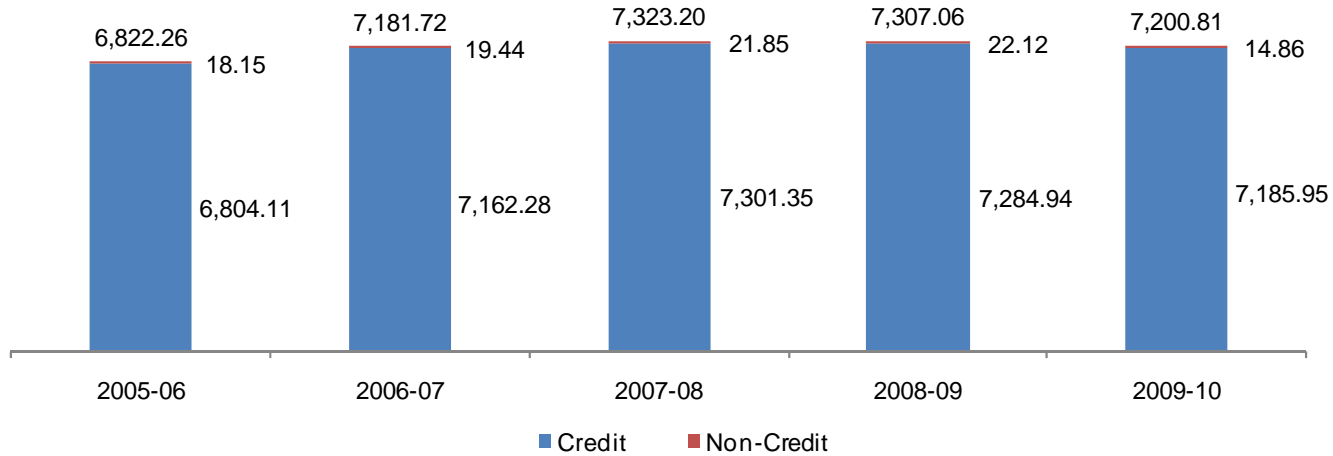


Table 4.1. Miramar College Resident & Non Resident Annual FTES

	2005-06	2006-07	2007-08	2008-09	2009-10
Credit	6,804.11	7,162.28	7,301.35	7,284.94	7,185.95
Non-Credit	18.15	19.44	21.85	22.12	14.86
Total	6,822.26	7,181.72	7,323.20	7,307.06	7,200.81

Source: SDCCD Information System

Miramar College Section IV: Productivity and Efficiency (Enrollments)

Enrollments: The enrollment trend for the online mode of instruction increased tremendously for summer (115%), fall (73%) and spring (20%) terms between 2005/06 and 2009/10. The on campus mode of instruction enrollment decreased between 2005/06 and 2009/10 for the summer (11%), fall (2%), and spring (7%) terms. The total enrollment trends for all colleges in the district were higher compared to the total enrollment trends for Miramar College across the summer, fall, and spring terms.

Figure 4.2.1. Miramar College Enrollments (Summer)

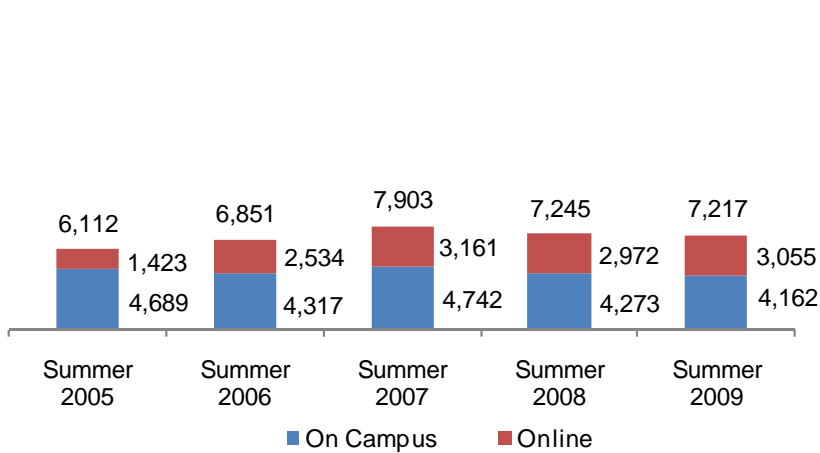


Figure 4.2.2. Miramar College Enrollments (Fall)

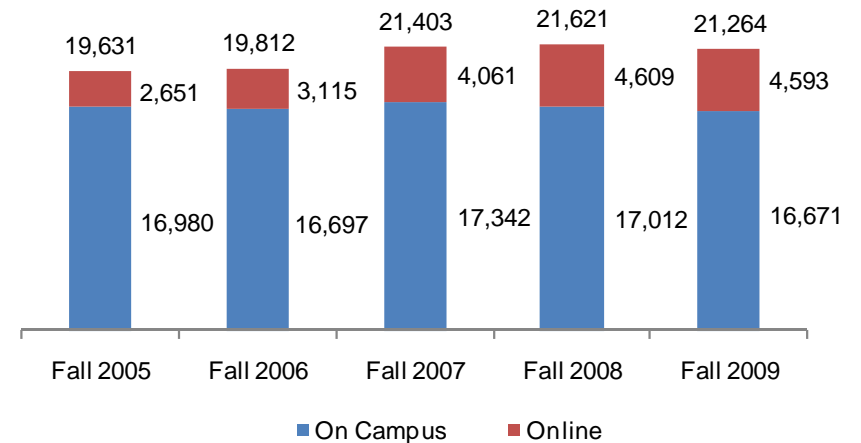
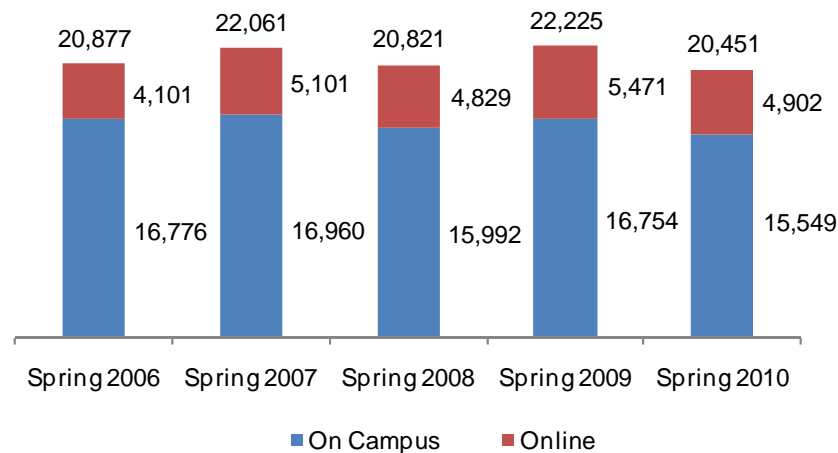


Figure 4.2.3. Miramar College Enrollments (Spring)



Miramar College Section IV: Productivity and Efficiency (Fill Rates)

Fill Rates: The overall fill rates for Miramar College were the highest for the fall term, on average, when compared to spring and summer terms (87% vs. 86% & 79%, respectively) between 2005/06 and 2009/10. Overall fill rates for all colleges in the district followed the same pattern. On average, fill rates were the highest for the online mode of instruction across summer, fall, and spring terms (83%, 88%, & 88%) compared to the on campus mode of instruction (summer 77%, fall 86%, & spring 85% terms). Miramar College had overall higher fill rates, on average, compared to the fill rates of all colleges in the district across all modes of instruction.

Figure 4.3.1. Miramar College Fill Rates (Summer)

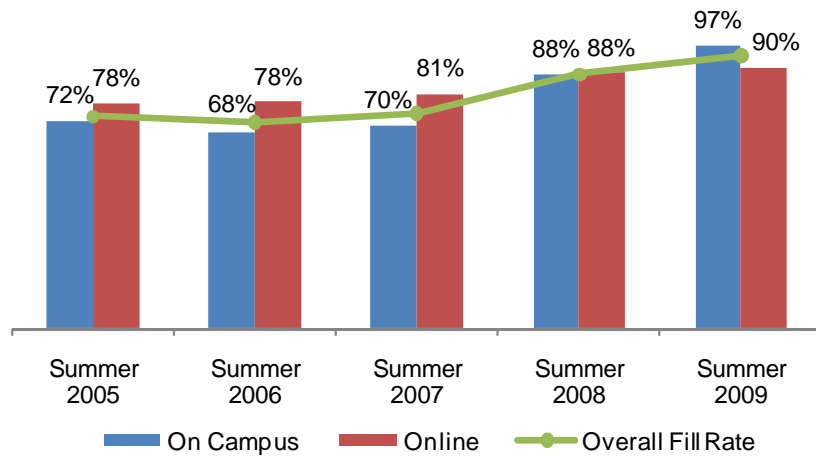


Figure 4.3.2. Miramar College Fill Rates (Fall)

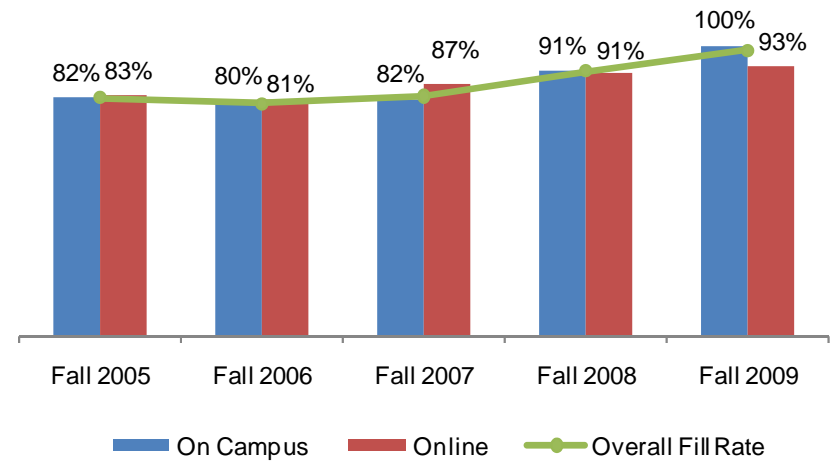
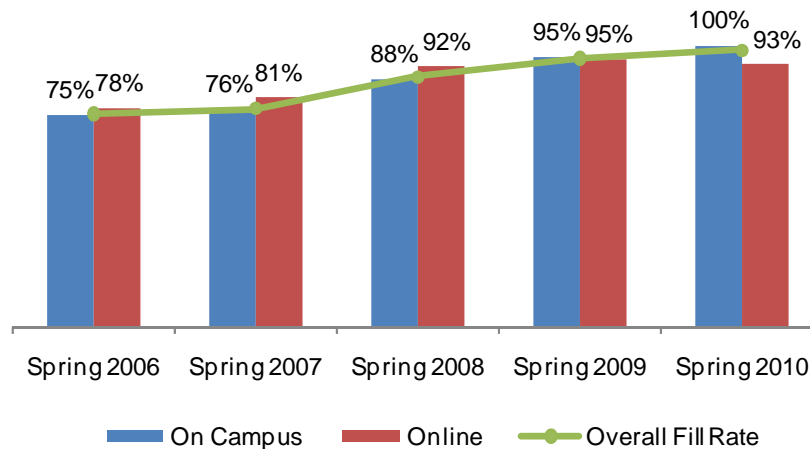


Figure 4.3.3. Miramar College Fill Rates (Spring)



Miramar College Section IV: Productivity and Efficiency (Enrollments and Fill Rates)

Table 4.2. Miramar College Enrollments and Fill Rates

	On Campus			Online			Campus Total			All Colleges Total		
	Enrollment	Capacity	Fill Rate	Enrollment	Capacity	Fill Rate	Enrollment	Capacity	Fill Rate	Enrollment	Capacity	Fill Rate
Summer 2005	4,689	6,540	72%	1,423	1,835	78%	6,112	8,375	73%	29,691	41,844	71%
Summer 2006	4,317	6,394	68%	2,534	3,249	78%	6,851	9,643	71%	31,857	49,442	64%
Summer 2007	4,742	6,770	70%	3,161	3,909	81%	7,903	10,679	74%	34,839	52,410	66%
Summer 2008	4,273	4,881	88%	2,972	3,383	88%	7,245	8,264	88%	37,059	47,128	79%
Summer 2009	4,162	4,269	97%	3,055	3,401	90%	7,217	7,670	94%	37,124	41,903	89%
Total	22,183	28,854	77%	13,145	15,777	83%	35,328	44,631	79%	170,570	232,727	73%

	On Campus			Online			Campus Total			All Colleges Total		
	Enrollment	Capacity	Fill Rate	Enrollment	Capacity	Fill Rate	Enrollment	Capacity	Fill Rate	Enrollment	Capacity	Fill Rate
Fall 2005	16,980	20,667	82%	2,651	3,199	83%	19,631	23,866	82%	103,520	130,535	79%
Fall 2006	16,697	20,914	80%	3,115	3,832	81%	19,812	24,746	80%	106,600	139,984	76%
Fall 2007	17,342	21,217	82%	4,061	4,675	87%	21,403	25,892	83%	110,512	137,470	80%
Fall 2008	17,012	18,601	91%	4,609	5,082	91%	21,621	23,683	91%	112,978	130,309	87%
Fall 2009	16,671	16,617	100%	4,593	4,947	93%	21,264	21,564	99%	111,325	118,226	94%
Total	84,702	98,016	86%	19,029	21,735	88%	103,731	119,751	87%	544,935	656,524	83%

	On Campus			Online			Campus Total			All Colleges Total		
	Enrollment	Capacity	Fill Rate	Enrollment	Capacity	Fill Rate	Enrollment	Capacity	Fill Rate	Enrollment	Capacity	Fill Rate
Spring 2006	16,776	22,374	75%	4,101	5,287	78%	20,877	27,661	75%	108,155	146,751	74%
Spring 2007	16,960	22,294	76%	5,101	6,294	81%	22,061	28,588	77%	111,226	152,868	73%
Spring 2008	15,992	18,247	88%	4,829	5,245	92%	20,821	23,492	89%	112,436	139,660	81%
Spring 2009	16,754	17,561	95%	5,471	5,779	95%	22,225	23,340	95%	116,698	130,061	90%
Spring 2010	15,549	15,592	100%	4,902	5,280	93%	20,451	20,872	98%	113,607	119,491	95%
Total	82,031	96,068	85%	24,404	27,885	88%	106,435	123,953	86%	562,122	688,831	82%

Source: SDCCD Information System

Note: Fill rates are enrollments over the enrollment cap and do not include Positive Attendance, Non-credit, Apprenticeship, In-services, or cancelled courses.

Miramar College Section IV: Productivity and Efficiency (Load)

Load: The Load value for Fall 2009 was greater than the Load values for the previous four fall terms. Furthermore, the Load value for Spring 2010 was greater than the Load values for the previous four spring terms. The Miramar College Load values were higher compared to the all colleges in the district Load values across the fall and spring terms. The statewide benchmark for Load is 525 for a 17.5 week semester. SDCCD has set an internal benchmark of 557, which is commensurate to its 16.5 week semester.

Figure 4.4.1. Miramar College Fall Load



Figure 4.4.2. Miramar College Spring Load



Table 4.4. Miramar College Load

	Miramar College Load	All Colleges Load
Fall 2005	547	500
Fall 2006	519	493
Fall 2007	526	503
Fall 2008	578	534
Fall 2009	600	571
Spring 2006	529	480
Spring 2007	508	470
Spring 2008	591	510
Spring 2009	578	547
Spring 2010	610	583

Source: SDCCD Information System

Section V
Human Resources

Miramar College Section V: Human Resources

This section of the Fact Book contains information on the number and classification of employees during the Fall 2009 semester. The information is reported as follows:

- 1) Gender
- 2) Ethnicity
- 3) Employee Classification

Miramar College Section V: Human Resources

Fall 2009 Employees by Ethnicity: There were a total of 731 employees working at Miramar College during Fall 2009. The ethnic breakdown showed that White employees comprised 61% of the total employee population, followed by Asian employees (13%), and Latino employees constituted 10% of the Miramar College workforce. Among classified staff, White employees comprised more than one-third (37%) of the employees and made up more than two-thirds of the teaching faculty positions (70%) compared to all other ethnic groups. White employees constituted approximately half of both the management (42%) and supervisory (57%) positions. Asian employees comprised exactly one-quarter (25%) of the management positions and 14% of the supervisory positions. Latino employees comprised 17% and 5%, respectively, of the management and supervisory positions. African American employees constituted 10% of the supervisory positions.

Both Filipino and Latino employee populations (2% & 10%, respectively) at Miramar College were underrepresented relative to the Filipino and Latino general student populations (9% & 16%, respectively) at Miramar College. However, the White employee population (61%) at Miramar College was overrepresented relative to the White general student population (40%) at Miramar College. The employee populations of all other ethnic groups at Miramar College were comparable to the general student populations of all other ethnic groups at Miramar College.

Figure 5.1.1. Miramar College Fall 2009 Employees by Ethnicity

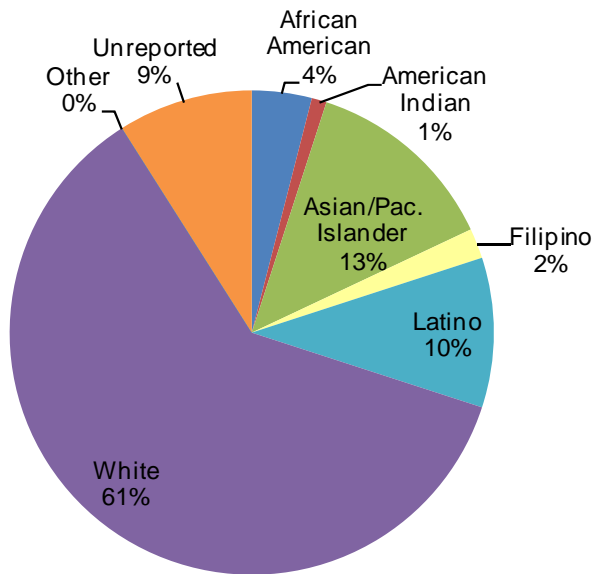
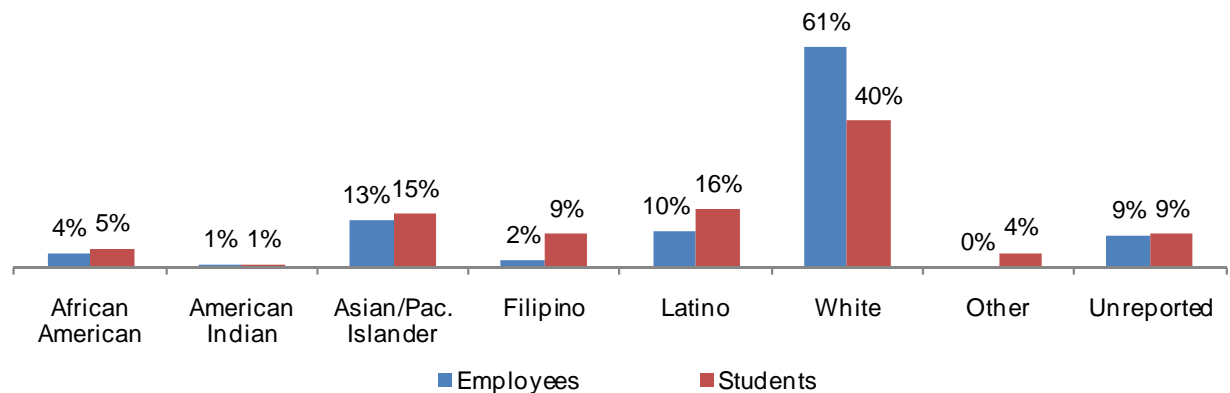


Figure 5.1.2. Miramar College Fall 2009 Employees compared to Students by Ethnicity



Miramar College Section V: Human Resources

Table 5.1. Miramar College Fall 2009 Employees by Ethnicity

	African American		American Indian		Asian/Pacific Islander		Filipino		Latino		White		Other		Unreported		Total
Total Employees	30	4%	4	1%	96	13%	13	2%	73	10%	449	61%	-	-	66	9%	731
Female	16	5%	-	-	51	15%	6	2%	38	11%	203	59%	-	-	29	8%	343
Male	14	4%	4	1%	45	12%	7	2%	35	9%	246	63%	-	-	37	10%	388
Classified Staff	6	7%	-	-	24	30%	4	5%	11	14%	30	37%	-	-	6	7%	81
Non-Academic Hourly	6	5%	-	-	35	29%	-	-	7	6%	63	53%	-	-	9	8%	120
Teaching Faculty	11	2%	4	1%	25	6%	4	1%	46	10%	313	70%	-	-	43	10%	446
Contract	2	2%	1	1%	3	4%	1	1%	7	9%	53	65%	-	-	14	17%	81
Adjunct	9	2%	3	1%	22	6%	3	1%	39	11%	260	71%	-	-	29	8%	365
Counseling Faculty	4	16%	-	-	4	16%	2	8%	5	20%	10	40%	-	-	-	-	25
Contract	4	24%	-	-	1	6%	1	6%	3	18%	8	47%	-	-	-	-	17
Adjunct	-	-	-	-	3	38%	1	13%	2	25%	2	25%	-	-	-	-	8
Library Faculty	-	-	-	-	-	-	-	-	-	-	3	60%	-	-	2	40%	5
Contract	-	-	-	-	-	-	-	-	-	-	1	50%	-	-	1	50%	2
Adjunct	-	-	-	-	-	-	-	-	-	-	2	67%	-	-	1	33%	3
Police Officers	-	-	-	-	-	-	-	-	-	-	3	100%	-	-	-	-	3
Community Service Officers	1	50%	-	-	1	50%	-	-	-	-	-	-	-	-	-	-	2
Management	-	-	-	-	3	25%	-	-	2	17%	5	42%	-	-	2	17%	12
Supervisory Staff	2	10%	-	-	3	14%	2	10%	1	5%	12	57%	-	-	1	5%	21

Source: SDCCD Information System

Table 5.2. Miramar College Employees by Gender and Employment Status

Gender		Employment Status	
Female	47%	Full-Time/Contract	30%
Male	53%	Hourly/Adjunct	70%

Source: SDCCD Information System

Section VI
Concluding Remarks

Miramar College Section VI: Concluding Remarks

Headcount. The number of unduplicated students or headcount at Miramar College showed an overall continual increase during the five year period reported; 2005/06 to 2009/10. In particular, the summer headcount showed marked increase between Summer 2005 and Summer 2009 (19%). Furthermore, the fall and spring headcounts showed an increase (7% & 5%, respectively) as well. These increases are likely due in part to the downturned economy which frequently spawns renewed interest in retraining or retooling of skills or the learning of a new skill set.

Demographics. The student population remained majority male (55% on average) and generally young (66% on average were between 18-29 years old). In regards to ethnicity, the White student population was more than twice as large (41%), on average, compared to the Latino and Asian/Pacific Islander student populations (15% each). The fastest growing segment appeared to be students between ages 25-29 years old followed by those between ages 18-24 years old. Approximately half of the Miramar College student population lived outside the San Diego Community College District service area, which remained consistent over the five year reporting period.

Units Attempted by Units Earned. Students who enrolled in fewer units were more likely to complete the entire number of units attempted. On average, approximately three-quarters of those students who attempted between 0.1-5.9 units completed the attempted units. In contrast, approximately half of those students who attempted greater than 8.9 units actually completed the attempted units.

Persistence. A majority of the first-time credit college students who completed a fall term persisted and completed the subsequent spring term (62% on average) during the five years reported; 2005 to 2009. Female students persisted at a higher rate than their male student counterpart (65% compared to 60%), while the average persistence rates by ethnicity ranged from 51% to 76%. Younger first-time college credit students persisted at a higher rate than older students (65% for 18-24 years old compared to 48% for 40-49 years old), which is likely due to the fact that the younger students are generally degree or transfer seeking with a longer range education plan than the older students.

Student Outcomes: Success, Retention, and GPA. The average successful course completion rate for the Miramar College student population was 71%, the average retention rate was 85%, and the average GPA was 2.80. On average, female students had lower success rates, lower retention rates, and comparable GPA relative to their male student counterpart. Student ages 18-24 years old, on average, had moderately high retention rates but the lowest success rates and GPA (84%, 66%, & 2.56, respectively). Since this segment makes up approximately half of the student population, further investigation into this disparity seems warranted so that clarification as to why this segment of the population underperforms in comparison to other age groups. Overall, both Asian/Pacific Islander and White students had the highest success and retention rates as well as GPA on average. In contrast, African American students had the lowest success and retention rates and GPA.

Miramar College Section VI: Concluding Remarks

Student Outcomes: Awards Conferred. On average, 57% of the total awards conferred at Miramar College were associate degrees. Of the total awards conferred at Miramar College, both male (50%) and female (50%) students, on average, received relatively the same number of associate degrees between 2005/06 and 2009/10. From 2005/06 to 2009/10, White students received the most awards across most of the award categories. Asian/Pacific Islander students had the second highest number of associate degrees and certificates requiring 30 to 59 units conferred. Furthermore, both Asian/Pacific Islander and Latino students had the second highest number of certificates requiring 29 or fewer units on average (15% each). These trends reflect the fact that these three ethnicities (White, Asian/Pacific Islanders, & Latino students) constitute the greatest proportions of the student headcount population at Miramar College. Approximately two-thirds of the total number of associate degrees and half of the certificates requiring 60 or more units awarded between 2005/06 and 2009/10 were to students between ages 18-29 years old on average.

Student Outcomes: Transfer Volume. The annual transfer volume for Miramar College increased 116%, from 294 in 2005/06 to 635 in 2009/10. On average, nearly half of the transfers were to the CSU system (47%), followed by UC (22%), Out-of-State institutions (19%), and finally In-State private institutions (12%). Students between ages 25-29 year olds increased 168% between 2005/06 and 2009/10. The Latino student population increased the most in transfer volume (175%), from 28 in 2005/06 to 77 in 2009/10, which may be a direct result of the cluster of classes or Learning Communities at the colleges that focus on student transfer goal.

Productivity and Efficiency. Duplicated headcounts/enrollments at Miramar College increased by approximately 5% from 2005/06 to 2009/10. Similarly, FTES increased 6% during this same reporting period. Both showed fluctuations each year with a particular surge in enrollment and FTES between 2007/08 and 2008/09 and then a slight decline in 2009/10. Fill rates also showed marked increases during this period (98% in 2009/10). Load (WSCH/FTEF) increased between 2005/06 and 2009/10 to an all time high in both Fall 2009 and Spring 2010 (600 & 610, respectively).

Human Resources. There were a total of 731 employees working at Miramar College during Fall 2009. The Filipino and Latino employee populations (2% & 10%, respectively) were underrepresented relative to the Filipino and Latino student populations (9% & 16%, respectively) that Miramar College serves. The White employee population (61%) at Miramar College was overrepresented relative to the White general student population (40%) by approximately one and one half times.