

2
0
1
1

Fact Book

Continuing Education



Prepared by:
Office of Institutional Research and Planning
September 2011

Continuing Education Fact Book 2011: Table of Contents

Overview	1
Section I. Headcount and Student Characteristics	2
Section Overview	3
Overall	4
By Gender	5
By Ethnicity	6
By Age	7
By Service Area of Residence	8
By Income Level	9
Section II. Annual Awards Conferred	10
Section Overview	11
Overall	12
By Gender	13
By Ethnicity	15
By Age	18
Section III. Productivity	21
Section Overview	22
Annual FTES	23
Enrollments	24
Section IV. Human Resources	26
Section Overview	27
Fall 2010 Employee Breakdown	28

Continuing Education Fact Book 2011: Overview

This Fact Book is a publication of the Office of Institutional Research and Planning for the San Diego Community College District. It is designed to serve the information needs of the community with a primary focus on student enrollment, demographics, and outcomes.

The Fact Book is a rich source of Continuing Education trend information that may be used for planning and decision making. The book contains the following five sections:

- 1) **Headcount and Student Characteristics.** Provides information on student demographic characteristics (e.g., age, ethnicity, and residence by service area) over five years.
- 2) **Awards Conferred.** Provides information about certificates of completion, high school diplomas, and GEDs awarded. All of the information is provided in summary form, as well as demographic characteristics of interest.
- 3) **Productivity.** Provides information on annual FTES and enrollment.
- 4) **Human Resources.** Provides information on the number of employees by ethnicity, gender, and employment type.

Each section contains the following benchmarks: 1) The percentage change over the five year period being reported, 2) The Continuing Education campuswide average and 3) The “Districtwide” (includes Continuing Education) averages.

Continuing Education Section I: Headcount and Student Characteristics

**Section I
Headcount and Student Characteristics**

Continuing Education Section I: Headcount and Student Characteristics

This section of the Fact Book contains student headcount by various student characteristics. The headcount figures are based on students who attended classes for one or more hours (all students who have less than one attendance hour or never attended are not included). Furthermore, all cancelled classes are excluded from analyses. The headcount information is reported over a period of five years to analyze trends and establish benchmarks. Headcount information is reported by the following segments:

- 1) Overall
- 2) Gender
- 3) Ethnicity
- 4) Age
- 5) Service Area of Residence
- 6) Income Level

Continuing Education Section I: Headcount and Student Characteristics

Overall Headcount: Unduplicated student headcount for Continuing Education showed a 19% decrease between Fall 2006 and Fall 2010. In particular, the student headcount between Fall 2006 and Fall 2008 remained relatively steady and subsequently decreased in Fall 2009 and again in Fall 2010. Unduplicated student headcount for Continuing Education showed a 21% decrease, from 24,343 in Summer 2006 to 19,313 in Summer 2010. Finally, unduplicated student headcount for Continuing Education showed a 16% decrease between Spring 2007 and Spring 2011.

Figure 1.1. Continuing Education Overall Headcount (Fall)

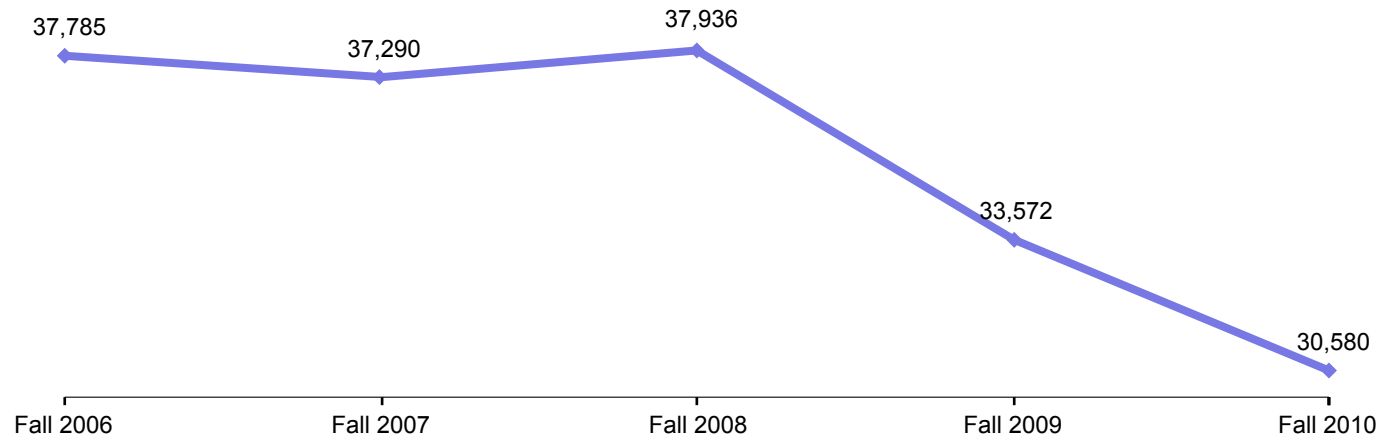


Table 1.1.1. Continuing Education Overall Headcount (Summer)

	Summer 06	Summer 07	Summer 08	Summer 09	Summer 10	% Change Summer 06-10
Total	24,343	26,259	26,333	21,676	19,313	-21%

Source: SDCCD Information System

Table 1.1.2. Continuing Education Overall Headcount (Fall)

	Fall 06	Fall 07	Fall 08	Fall 09	Fall 10	% Change Fall 06-10
Total	37,785	37,290	37,936	33,572	30,580	-19%

Source: SDCCD Information System

Table 1.1.3. Continuing Education Overall Headcount (Spring)

	Spring 07	Spring 08	Spring 09	Spring 10	Spring 11	% Change Spring 07-11
Total	38,274	38,087	37,499	33,447	32,277	-16%

Source: SDCCD Information System

Continuing Education Section I: Headcount and Student Characteristics

Headcount by Gender: On average, the female student headcount (60%) was higher than their male student counterpart (36%). Both the female and male student headcounts remained consistent for the most part between Fall 2006 and Fall 2008. While male student headcount stayed steady at 37% in Fall 2009 and 36% in Fall 2010, female student headcount increased to 63% in Fall 2009 and Fall 2010. Both the female and male student headcounts decreased 10% and 19%, respectively, between Fall 2006 and Fall 2010.

Figure 1.2. Continuing Education Headcount by Gender

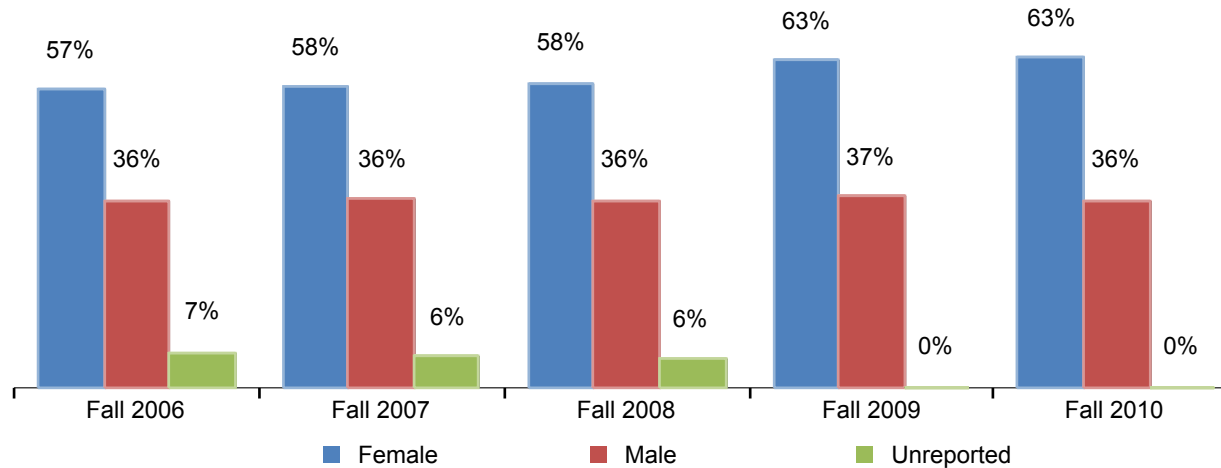


Table 1.2. Continuing Education Headcount by Gender

	Fall 06		Fall 07		Fall 08		Fall 09		Fall 10		% Change Fall 06-10	CE Average Fall 06-10	Districtwide Average Fall 06-10
Female	21,579	57%	21,531	58%	22,145	58%	21,089	63%	19,410	63%	-10%	60%	55%
Male	13,611	36%	13,524	36%	13,669	36%	12,354	37%	11,059	36%	-19%	36%	43%
Unreported	2,595	7%	2,235	6%	2,122	6%	129	0%	111	0%	-96%	4%	2%
Total	37,785	100%	37,290	100%	37,936	100%	33,572	100%	30,580	100%	-19%	100%	100%

Source: SDCCD Information System

Continuing Education Section I: Headcount and Student Characteristics

Headcount by Ethnicity: The ethnic groups that comprised the largest headcounts between Fall 2006 and Fall 2010 were Latino students (33%), White students (33%), and Asian/Pacific Islander students (13%) on average. Within Continuing Education, students that were categorized as 'Other' ethnicities increased 57%. In contrast, African American student headcount declined 28% between Fall 2006 and Fall 2010. The Latino student headcount within Continuing Education (33%) was overrepresented compared to the districtwide Latino student population headcount (28%).

Figure 1.3. Continuing Education Headcount by Ethnicity

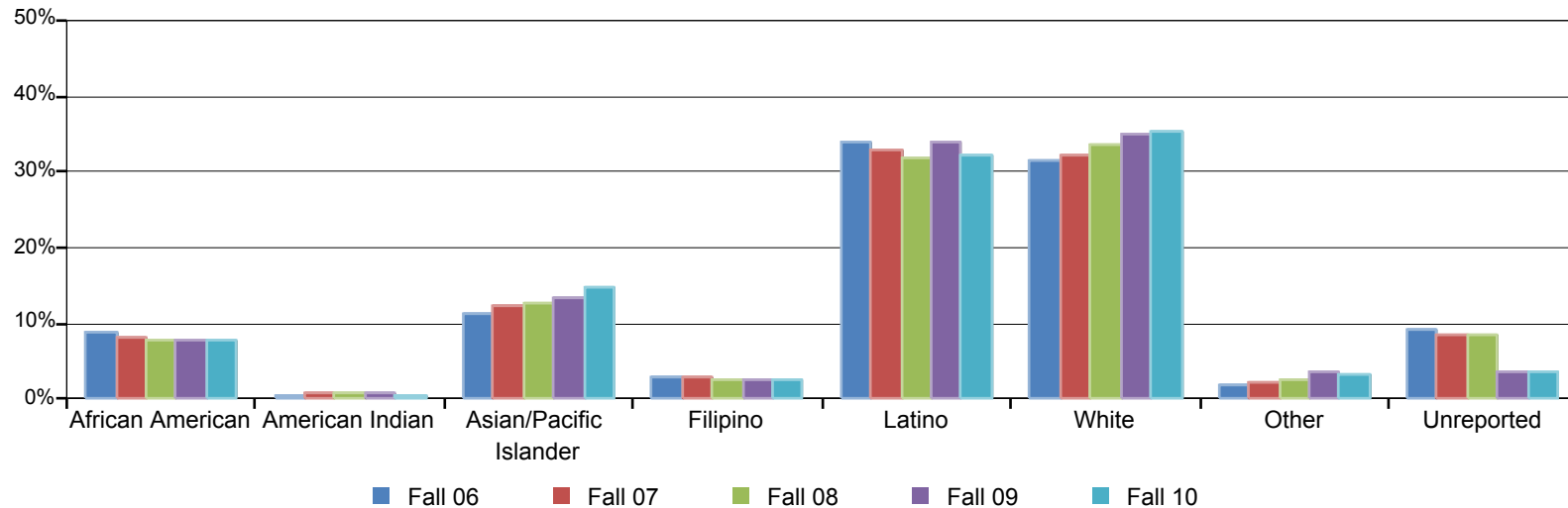


Table 1.3. Continuing Education Headcount by Ethnicity

	Fall 06		Fall 07		Fall 08		Fall 09		Fall 10		% Change Fall 06-10	CE Average Fall 06-10	Districtwide Average Fall 06-10
African American	3,300	9%	2,985	8%	3,010	8%	2,577	8%	2,374	8%	-28%	8%	8%
American Indian	228	1%	291	1%	258	1%	213	1%	170	1%	-25%	1%	1%
Asian/Pacific Islander	4,301	11%	4,604	12%	4,768	13%	4,474	13%	4,484	15%	4%	13%	12%
Filipino	1,052	3%	1,011	3%	1,003	3%	802	2%	800	3%	-24%	3%	4%
Latino	12,838	34%	12,312	33%	12,087	32%	11,384	34%	9,891	32%	-23%	33%	28%
White	11,902	31%	12,059	32%	12,708	33%	11,754	35%	10,769	35%	-10%	33%	35%
Other	653	2%	827	2%	962	3%	1,145	3%	1,027	3%	57%	3%	3%
Unreported	3,511	9%	3,201	9%	3,140	8%	1,223	4%	1,065	3%	-70%	7%	8%
Total	37,785	100%	37,290	100%	37,936	100%	33,572	100%	30,580	100%	-19%	100%	100%

Source: SDCCD Information System

Continuing Education Section I: Headcount and Student Characteristics

Headcount by Age: From Fall 2006 to Fall 2010, the age groups with the largest headcounts within Continuing Education were students age 50 and older (37%) and students between ages 30-39 (19%) on average. Students under 18 and students ages 18-24 decreased 49% and 29%, respectively, between Fall 2006 and Fall 2010. Student headcount for those ages 18-24 years old displayed the greatest disparity within Continuing Education when compared to the districtwide student headcount for the same age group (14% & 36%, respectively). However, the headcount for those students age 50 and older (37%) was overrepresented when compared to the districtwide student headcount for the same age group (19%).

Figure 1.4 Continuing Education Headcount by Age

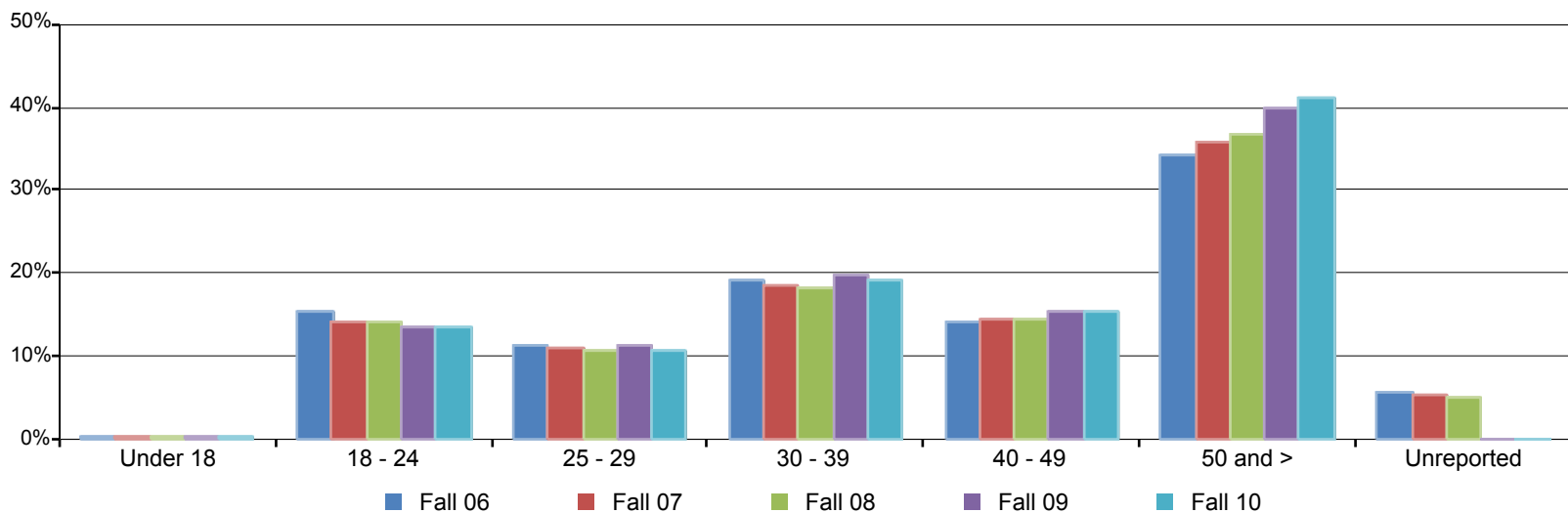


Table 1.4 Continuing Education Headcount by Age

	Fall 06		Fall 07		Fall 08		Fall 09		Fall 10		% Change Fall 06-10	CE Average Fall 06-10	Districtwide Average Fall 06-10
Under 18	148	0%	148	0%	140	0%	130	0%	75	0%	-49%	0%	2%
18 - 24	5,817	15%	5,323	14%	5,365	14%	4,532	13%	4,113	13%	-29%	14%	36%
25 - 29	4,237	11%	4,069	11%	4,080	11%	3,755	11%	3,250	11%	-23%	11%	15%
30 - 39	7,196	19%	6,945	19%	6,958	18%	6,657	20%	5,876	19%	-18%	19%	16%
40 - 49	5,401	14%	5,400	14%	5,521	15%	5,148	15%	4,708	15%	-13%	15%	11%
50 and >	12,886	34%	13,359	36%	13,931	37%	13,343	40%	12,555	41%	-3%	37%	19%
Unreported	2,100	6%	2,046	5%	1,941	5%	7	0%	3	0%	-100%	3%	2%
Total	37,785	100%	37,290	100%	37,936	100%	33,572	100%	30,580	100%	-19%	100%	100%

Source: SDCCD Information System

Continuing Education Section I: Headcount and Student Characteristics

Headcount by Service Area of Residence: Between Fall 2006 and Fall 2010, on average, 20% of students within the Continuing Education population resided within the West City service area, 19% of students resided within the Mid-City service area, 16% of students resided within the Centre City service area, 13% of students resided within the North City service area, 6% of students resided within the Cesar Chavez service area, and 5% of students resided within the ECC service area. Seventeen percent of students who attended a Continuing Education site resided outside the Continuing Education service area.

Figure 1.5 Continuing Education Headcount by Service Area of Residence

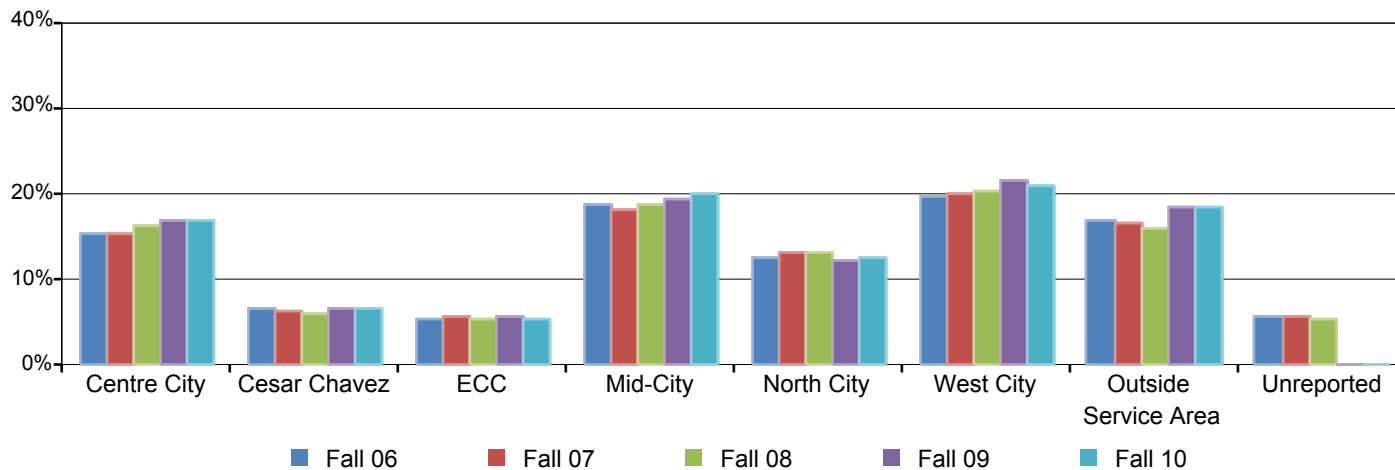


Table 1.5. Continuing Education Headcount by Service Area of Residence

	Fall 06		Fall 07		Fall 08		Fall 09		Fall 10		% Change Fall 06-10	CE Average Fall 06-10
Centre City	5,754	15%	5,680	15%	6,101	16%	5,687	17%	5,104	17%	-11%	16%
Cesar Chavez	2,460	7%	2,362	6%	2,239	6%	2,177	6%	1,986	6%	-19%	6%
ECC	2,023	5%	2,028	5%	1,986	5%	1,895	6%	1,608	5%	-21%	5%
Mid-City	7,046	19%	6,782	18%	7,065	19%	6,453	19%	6,065	20%	-14%	19%
North City	4,713	12%	4,832	13%	4,945	13%	4,011	12%	3,772	12%	-20%	13%
West City	7,369	20%	7,388	20%	7,697	20%	7,212	21%	6,403	21%	-13%	20%
Outside Service Area	6,325	17%	6,174	17%	5,967	16%	6,137	18%	5,642	18%	-11%	17%
Unreported	2,095	6%	2,044	5%	1,936	5%	0	0%	0	0%	-100%	3%
Total	37,785	100%	37,290	100%	37,936	100%	33,572	100%	30,580	100%	-19%	100%

Source: SDCCD Information System

Continuing Education Section I: Headcount and Student Characteristics

Headcount by Income Level: Between Fall 2006 and Fall 2010, on average, one in every five students (22%) within the Continuing Education student population reported an annual income of \$33,000 or more and one in every three students (35%) reported making an annual income of \$0-2,999. The number of students who reported making between \$0-2,999 a year, on average, increased 22% between Fall 2006 and Fall 2010.

Figure 1.6. Continuing Education Headcount by Income Level

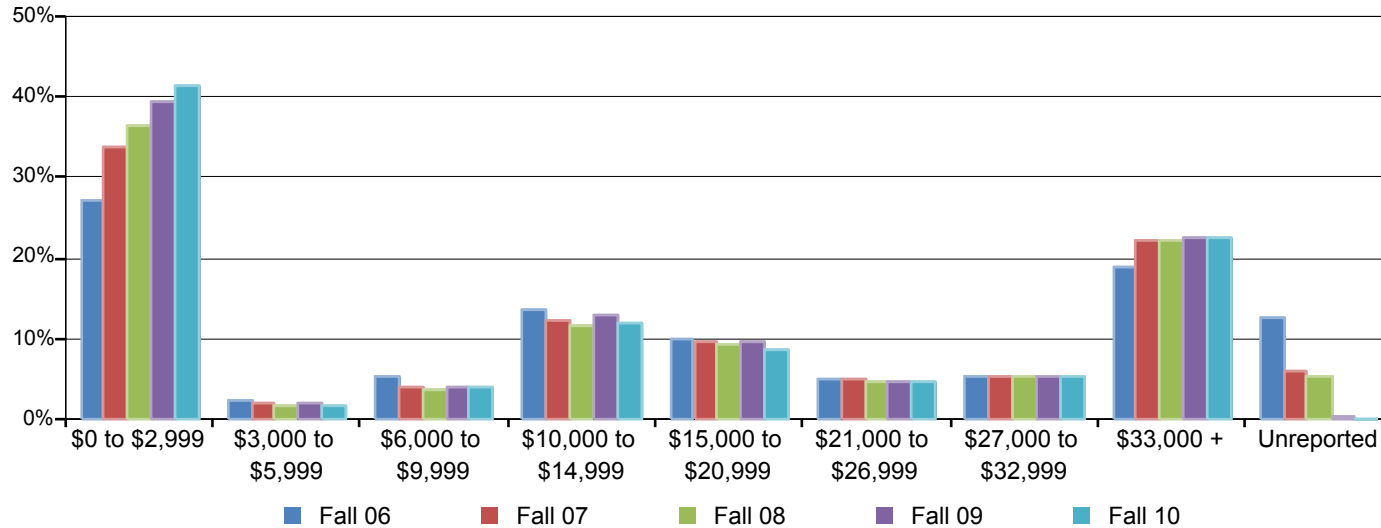


Table 1.6. Continuing Education Headcount by Income Level

	Fall 06		Fall 07		Fall 08		Fall 09		Fall 10		% Change Fall 06-10	CE Average Fall 06-10	Districtwide Average Fall 06-10
\$0 to \$2,999	10,293	27%	12,552	34%	13,778	36%	13,187	39%	12,606	41%	22%	35%	21%
\$3,000 to \$5,999	942	2%	716	2%	639	2%	625	2%	541	2%	-43%	2%	3%
\$6,000 to \$9,999	1,973	5%	1,552	4%	1,337	4%	1,311	4%	1,235	4%	-37%	4%	4%
\$10,000 to \$14,999	5,138	14%	4,502	12%	4,409	12%	4,306	13%	3,626	12%	-29%	12%	10%
\$15,000 to \$20,999	3,717	10%	3,540	9%	3,529	9%	3,197	10%	2,671	9%	-28%	9%	9%
\$21,000 to \$26,999	1,870	5%	1,849	5%	1,771	5%	1,540	5%	1,401	5%	-25%	5%	6%
\$27,000 to \$32,999	1,969	5%	2,044	5%	2,023	5%	1,754	5%	1,603	5%	-19%	5%	6%
\$33,000 +	7,096	19%	8,329	22%	8,446	22%	7,591	23%	6,856	22%	-3%	22%	23%
Unreported	4,787	13%	2,206	6%	2,004	5%	61	0%	41	0%	-99%	5%	19%
Total	37,785	100%	37,290	100%	37,936	100%	33,572	100%	30,580	100%	-19%	100%	100%

Source: SDCCD Information System

Continuing Education Section II: Annual Awards Conferred

**Section II
Annual Awards Conferred**

Continuing Education Section II: Annual Awards Conferred

This section of the Fact Book contains information on student annual awards which may be considered an indirect assessment of student learning. For purposes of this report, the annual awards conferred are the total number of certificates, diplomas, and GEDs awarded in a single academic year (summer, fall, and spring). Note that the annual awards conferred that are reported in this Fact Book are considered preliminary data. Please see the upcoming Awards Conferred Supplement report for final annual awards conferred numbers. All of the information in this section is reported by the following segments:

- 1) Overall
- 2) Gender
- 3) Ethnicity
- 4) Age

Continuing Education Section II: Annual Awards Conferred

Annual Awards Conferred: On average, approximately three-quarters of the total awards conferred at Continuing Education were certificates of completion (61%), one-quarter of the awards conferred were high school diplomas (25%), and 14% of the awards conferred were GED certificates between 2006/07 and 2010/11. The number of certificates of completion awarded increased 144%, from 448 in 2006/07 to 1,094 in 2010/11.

Figure 2.1. Continuing Education Overall Annual Awards Conferred

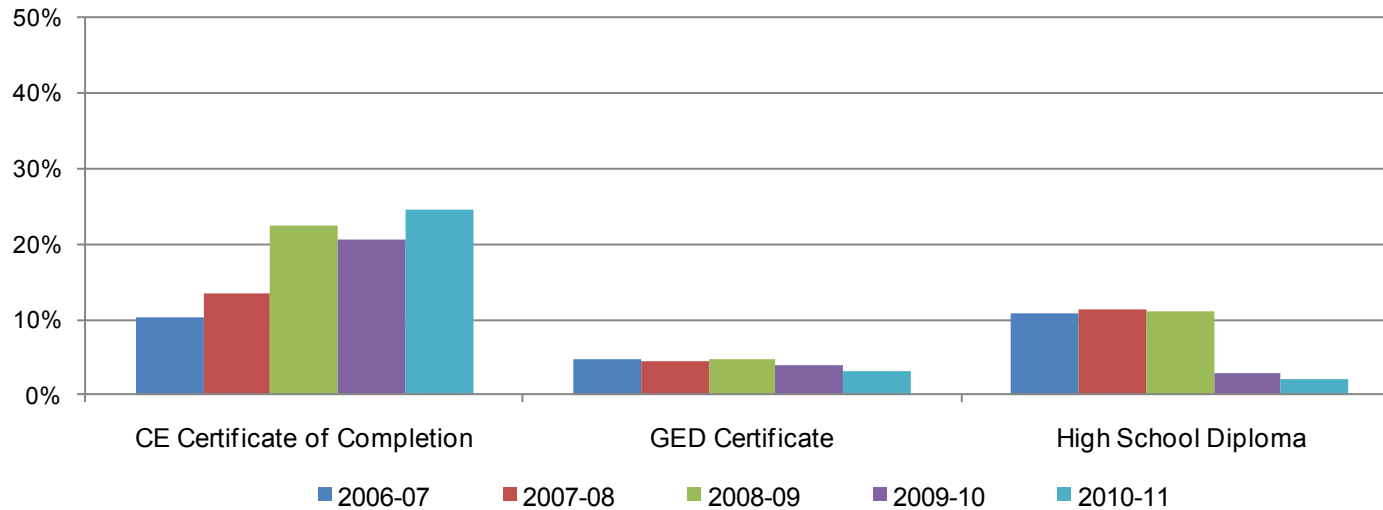


Table 2.1. Continuing Education Overall Annual Awards Conferred

	2006-07	2007-08	2008-09	2009-10	2010-11	% Change 06/07-10/11	CE Average 06/07-10/11
CE Certificate of Completion	448	581	1,177	942	1,094	144%	61%
GED Certificate	210	196	248	184	146	-30%	14%
High School Diploma	472	489	588	137	93	-80%	25%
Total	1,130	1,266	2,013	1,263	1,333	18%	100%

Source: SDCCD Information System

Note: In 2009/2010, reporting procedures for high school diplomas were revised to correspond with MIS reporting requirements.

Continuing Education Section II: Annual Awards Conferred

Annual Awards Conferred by Gender: Of the total certificates of completion conferred within Continuing Education, male students (52%) received more certificates of completions, on average, than their female student counterpart (47%) between 2006/07 and 2010/11. In regard to the number of GED certificates conferred within Continuing Education, both male and female students received a comparable amount of GED certificates (51% & 49%, respectively). On average, male students (53%) received a greater proportion of high school diplomas awarded than their female student counterpart (47%). While both male and female students displayed an increasing trend in the number of certificates of completions awarded (179% & 109%, respectively) between 2006/07 and 2010/11, the number of GED certificates awarded to both males and females decreased (37% & 23%, respectively) during the same reporting period.

Figure 2.2.1. Continuing Education Annual Certificates of Completion by Gender

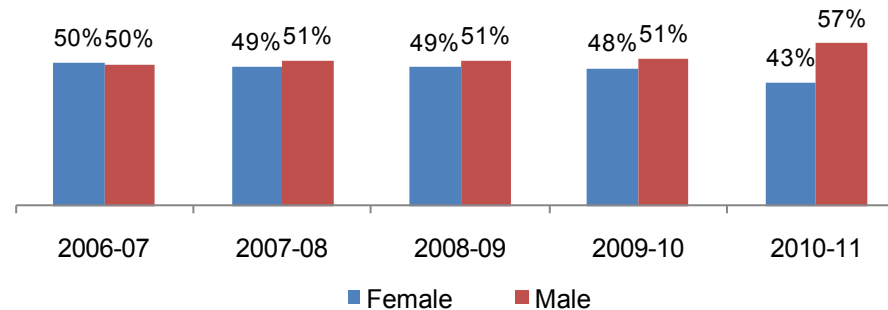


Figure 2.2.2. Continuing Education Annual GED Certificates by Gender

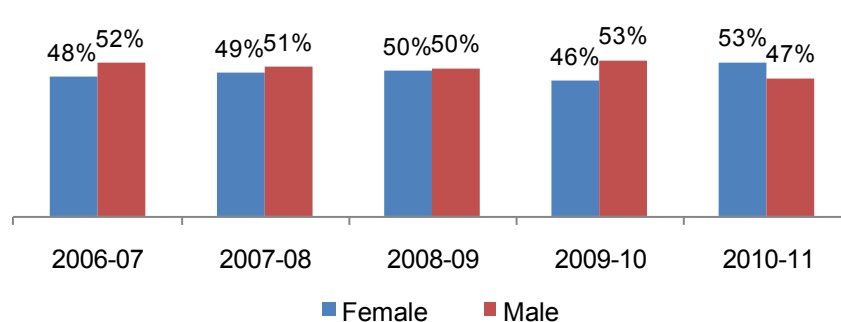
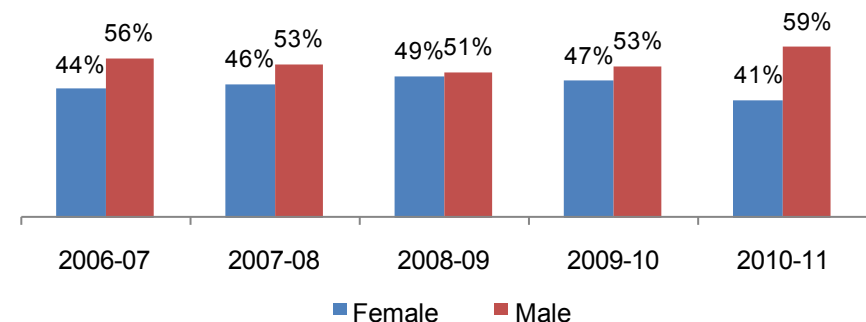


Figure 2.2.3. Continuing Education Annual High School Diplomas by Gender



Continuing Education Section II: Annual Awards Conferred

Table 2.2. Continuing Education Annual Awards Conferred by Gender

		2006-07		2007-08		2008-09		2009-10		2010-11		% Change 06/07-10/11	CE Average 06/07-10/11
CE Certificate of Completion	Female	225	50%	284	49%	572	49%	455	48%	471	43%	109%	47%
	Male	223	50%	296	51%	600	51%	485	51%	622	57%	179%	52%
	Unreported	0	0%	1	0%	5	0%	2	0%	1	0%	---	0%
	Total	448	100%	581	100%	1,177	100%	942	100%	1,094	100%	144%	100%
GED Certificate	Female	100	48%	96	49%	123	50%	85	46%	77	53%	-23%	49%
	Male	110	52%	100	51%	125	50%	98	53%	69	47%	-37%	51%
	Unreported	0	0%	0	0%	0	0%	1	1%	0	0%	---	0%
	Total	210	100%	196	100%	248	100%	184	100%	146	100%	-30%	100%
High School Diploma	Female	210	44%	227	46%	290	49%	65	47%	38	41%	-82%	47%
	Male	262	56%	261	53%	298	51%	72	53%	55	59%	-79%	53%
	Unreported	0	0%	1	0%	0	0%	0	0%	0	0%	---	0%
	Total	472	100%	489	100%	588	100%	137	100%	93	100%	-80%	100%
Grand Total	1,130	100%	1,266	100%	2,013	100%	1,263	100%	1,333	100%	18%	100%	

Source: SDCCD Information System

Note: In 2009/2010, reporting procedures for high school diplomas were revised to correspond with MIS reporting requirements.

Continuing Education Section II: Annual Awards Conferred

Annual Awards Conferred by Ethnicity: Between 2006/07 and 2010/11, White students and Latino students received a comparable amount of certificates of completion (29% & 28%, respectively), followed by African American student (14%), and both Asian/Pacific Islander and Filipino students (10% each) on average. Latino students received the most GED certificates awarded within Continuing Education (39%), followed by White students (30%), and African American students (11%) between 2006/07 and 2010/11. With the exception of Filipino students, all ethnic groups displayed an increased trend of receiving certificates of completion from 2006/07 to 2010/11.

Figure 2.3.1. Continuing Education Annual Certificates of Completion by Ethnicity

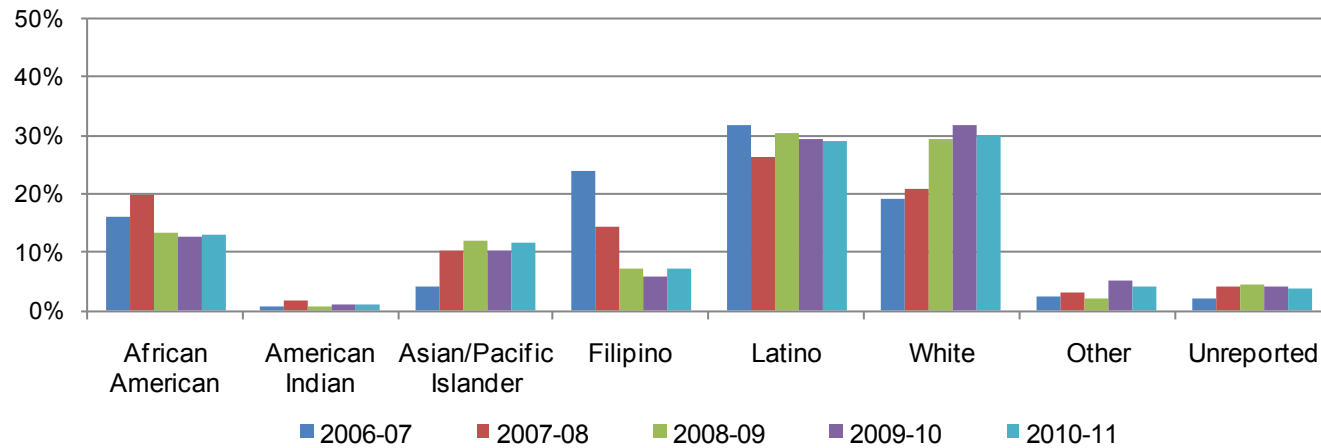
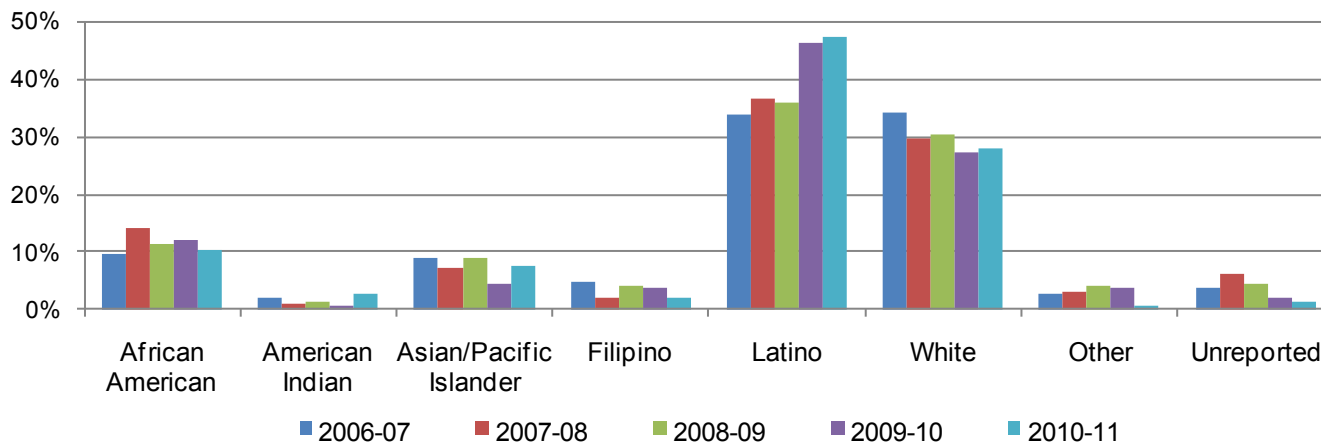
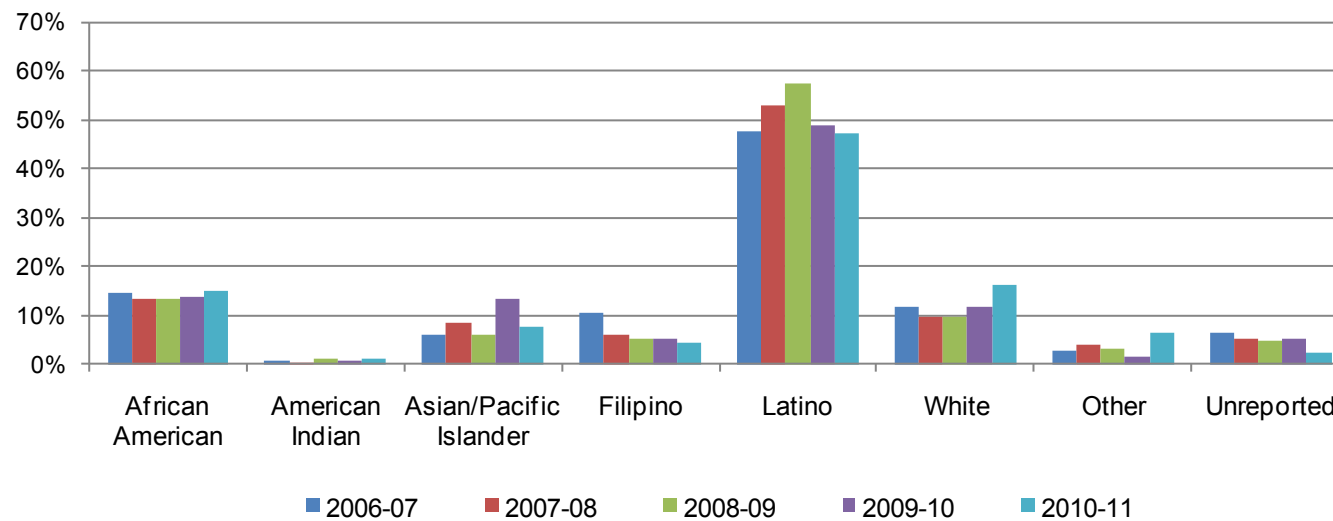


Figure 2.3.2. Continuing Education Annual GED Certificates by Ethnicity



Continuing Education Section II: Annual Awards Conferred

Figure 2.3.3. Continuing Education Annual High School Diploma by Ethnicity



Continuing Education Section II: Annual Awards Conferred

Table 2.3. Continuing Education Annual Awards Conferred by Ethnicity

		2006-07		2007-08		2008-09		2009-10		2010-11		% Change 06/07-10/11	CE Average 06/07-10/11
CE Certificate of Completion	African American	72	16%	116	20%	156	13%	118	13%	142	13%	97%	14%
	American Indian	3	1%	9	2%	9	1%	10	1%	10	1%	233%	1%
	Asian/Pacific Islander	19	4%	59	10%	142	12%	98	10%	126	12%	563%	10%
	Filipino	107	24%	83	14%	84	7%	54	6%	80	7%	-25%	10%
	Latino	142	32%	152	26%	360	31%	278	30%	319	29%	125%	29%
	White	85	19%	121	21%	348	30%	299	32%	328	30%	286%	28%
	Other	11	2%	18	3%	26	2%	47	5%	46	4%	318%	3%
	Unreported	9	2%	23	4%	52	4%	38	4%	43	4%	378%	4%
	Total	448	100%	581	100%	1,177	100%	942	100%	1,094	100%	144%	100%
GED Certificate	African American	20	10%	28	14%	28	11%	22	12%	15	10%	-25%	11%
	American Indian	4	2%	2	1%	3	1%	1	1%	4	3%	0%	1%
	Asian/Pacific Islander	19	9%	14	7%	22	9%	8	4%	11	8%	-42%	8%
	Filipino	10	5%	4	2%	10	4%	7	4%	3	2%	-70%	3%
	Latino	71	34%	72	37%	89	36%	85	46%	69	47%	-3%	39%
	White	72	34%	58	30%	75	30%	50	27%	41	28%	-43%	30%
	Other	6	3%	6	3%	10	4%	7	4%	1	1%	-83%	3%
	Unreported	8	4%	12	6%	11	4%	4	2%	2	1%	-75%	4%
	Total	210	100%	196	100%	248	100%	184	100%	146	100%	-30%	100%
High School Diploma	African American	69	15%	66	13%	78	13%	19	14%	14	15%	-80%	14%
	American Indian	3	1%	2	0%	5	1%	1	1%	1	1%	-67%	1%
	Asian/Pacific Islander	28	6%	41	8%	34	6%	18	13%	7	8%	-75%	7%
	Filipino	49	10%	30	6%	30	5%	7	5%	4	4%	-92%	7%
	Latino	225	48%	259	53%	337	57%	67	49%	44	47%	-80%	52%
	White	56	12%	47	10%	57	10%	16	12%	15	16%	-73%	11%
	Other	12	3%	19	4%	19	3%	2	1%	6	6%	-50%	3%
	Unreported	30	6%	25	5%	28	5%	7	5%	2	2%	-93%	5%
	Total	472	100%	489	100%	588	100%	137	100%	93	100%	-80%	100%
Grand Total	1,130	100%	1,266	100%	2,013	100%	1,263	100%	1,333	100%	18%	100%	

Source: SDCCD Information System

Note: In 2009/2010, reporting procedures for high school diplomas were revised to correspond with MIS reporting requirements.

Continuing Education Section II: Annual Awards Conferred

Annual Awards Conferred by Age: On average, students ages 30-39 years old received the most certificates of completion (26%), followed by students ages 40-49 years old (24%), and students ages 50 and older (20%). Students ages 18-24 years old received the greatest percentage of GEDs (48%), followed by students ages 30-39 years old (19%), and students ages 25-29 years old (18%). An upward trend was noted among all age groups who received certificates of completion between 2006/07 and 2010/11.

Figure 2.4.1. Continuing Education Annual Certificates of Completion by Age

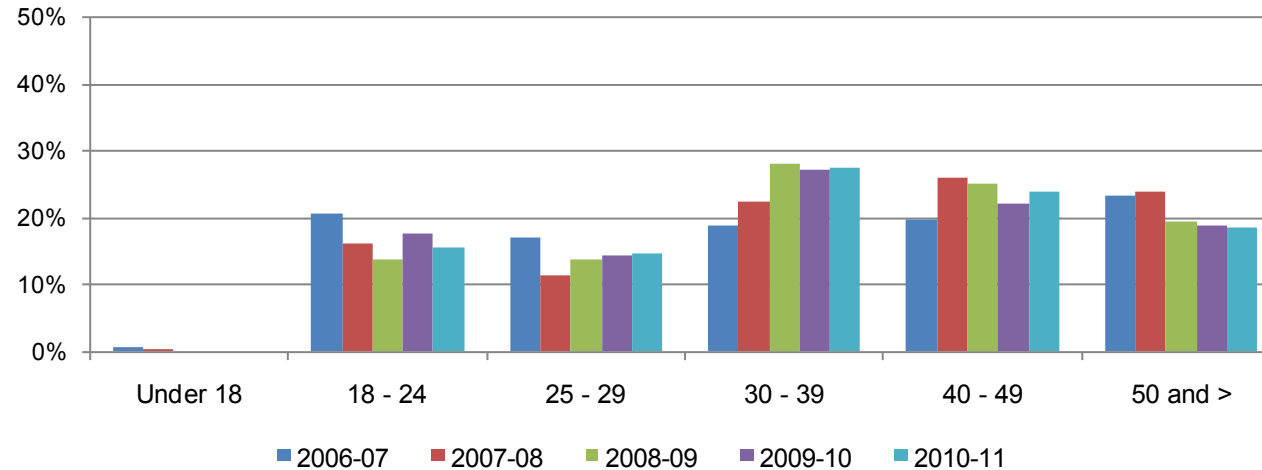
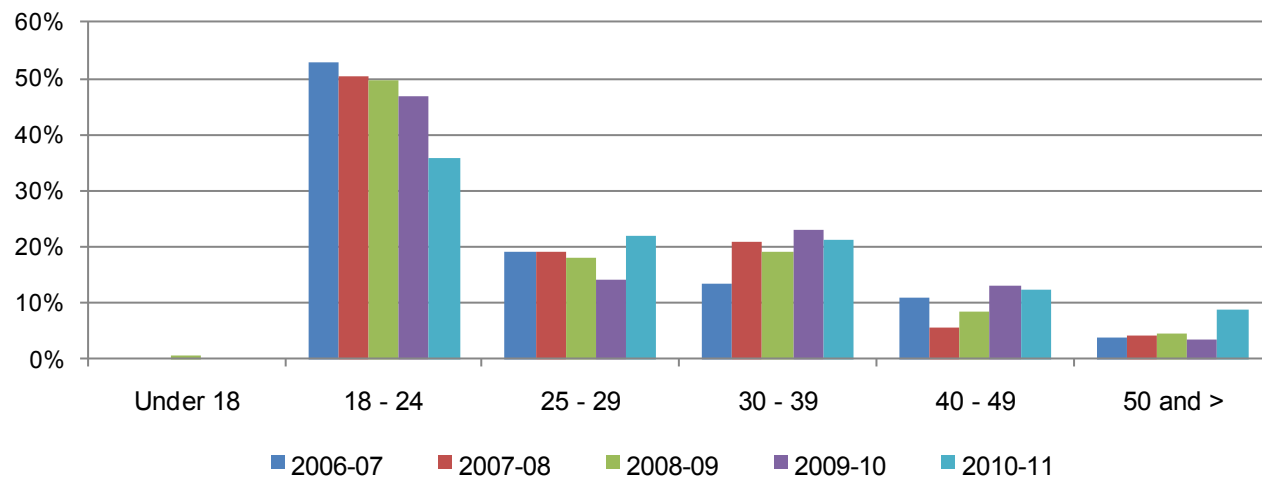
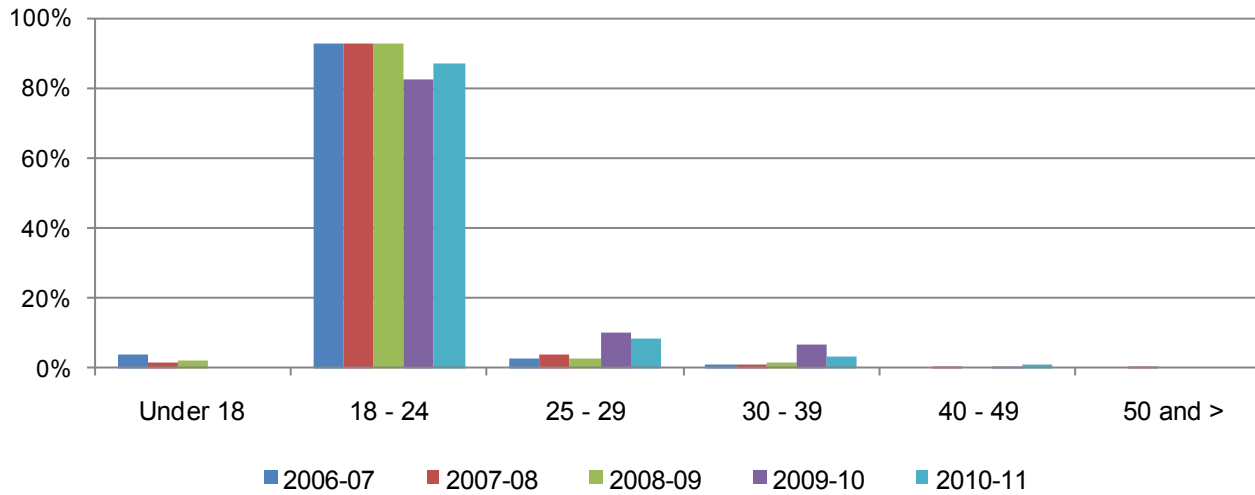


Figure 2.4.2. Continuing Education Annual GED Certificates by Age



Continuing Education Section II: Annual Awards Conferred

Figure 2.4.3. Continuing Education High School Diplomas by Age



Continuing Education Section II: Annual Awards Conferred

Table 2.4. Continuing Education Annual Awards Conferred by Age

		2006-07		2007-08		2008-09		2009-10		2010-11		% Change 06/07-10/11	CE Average 06/07-10/11
CE Certificate of Completion	Under 18	3	1%	1	0%	0	0%	0	0%	0	0%	-100%	0%
	18 - 24	92	21%	93	16%	162	14%	165	18%	170	16%	85%	16%
	25 - 29	76	17%	66	11%	161	14%	134	14%	159	15%	109%	14%
	30 - 39	85	19%	131	23%	332	28%	256	27%	302	28%	255%	26%
	40 - 49	88	20%	151	26%	295	25%	209	22%	260	24%	195%	24%
	50 and >	104	23%	139	24%	227	19%	178	19%	203	19%	95%	20%
	Total	448	100%	581	100%	1,177	100%	942	100%	1,094	100%	144%	100%
GED Certificate	Under 18	0	0%	0	0%	1	0%	0	0%	0	0%	---	0%
	18 - 24	111	53%	99	51%	123	50%	86	47%	52	36%	-53%	48%
	25 - 29	40	19%	37	19%	45	18%	26	14%	32	22%	-20%	18%
	30 - 39	28	13%	41	21%	47	19%	42	23%	31	21%	11%	19%
	40 - 49	23	11%	11	6%	21	8%	24	13%	18	12%	-22%	10%
	50 and >	8	4%	8	4%	11	4%	6	3%	13	9%	63%	5%
	Total	210	100%	196	100%	248	100%	184	100%	146	100%	-30%	100%
High School Diploma	Under 18	19	4%	9	2%	13	2%	0	0%	0	0%	-100%	2%
	18 - 24	437	93%	455	93%	547	93%	113	82%	81	87%	-81%	92%
	25 - 29	12	3%	18	4%	17	3%	14	10%	8	9%	-33%	4%
	30 - 39	4	1%	5	1%	11	2%	9	7%	3	3%	-25%	2%
	40 - 49	0	0%	1	0%	0	0%	1	1%	1	1%	---	0%
	50 and >	0	0%	1	0%	0	0%	0	0%	0	0%	---	0%
	Total	472	100%	489	100%	588	100%	137	100%	93	100%	-80%	100%
Grand Total	1,130	100%	1,266	100%	2,013	100%	1,263	100%	1,333	100%	18%	100%	

Source: SDCCD Information System

Note: In 2009/2010, reporting procedures for high school diplomas were revised to correspond with MIS reporting requirements.

**Section III
Productivity**

Continuing Education Section III: Productivity

This section of the Fact Book contains information on productivity measures. The following describes in detail each of the measures:

- 1) Annual FTES. The first measure reported in this section is a measure of productivity. Annual FTES is a calculation of full-time equivalent students and is based on the total number of attendance hours during the fall, summer, and spring terms of a given academic year.

- 2) Enrollments. The second measure in this section of the report is also a measure of productivity. Enrollments are duplicated counts of students. Enrollments and headcount differ in that enrollments count all of the classes in which a single student is enrolled, while unduplicated headcount counts the student only once regardless of the number of classes he/she may be enrolled in.

Continuing Education Section III: Productivity (FTES)

Annual FTES: Continuing Education showed a steady increase in total FTES between 2006/07 and 2008/09 and then a decline in FTES in 2009/10 and 2010/11. Continuing Education non-credit FTES displayed an 11% decrease, from 9,930 in 2006/07 to 8,879 in 2010/11. There was no credit FTES for Continuing Education.

Figure 3.1. Continuing Education Resident & Non Resident Annual FTES

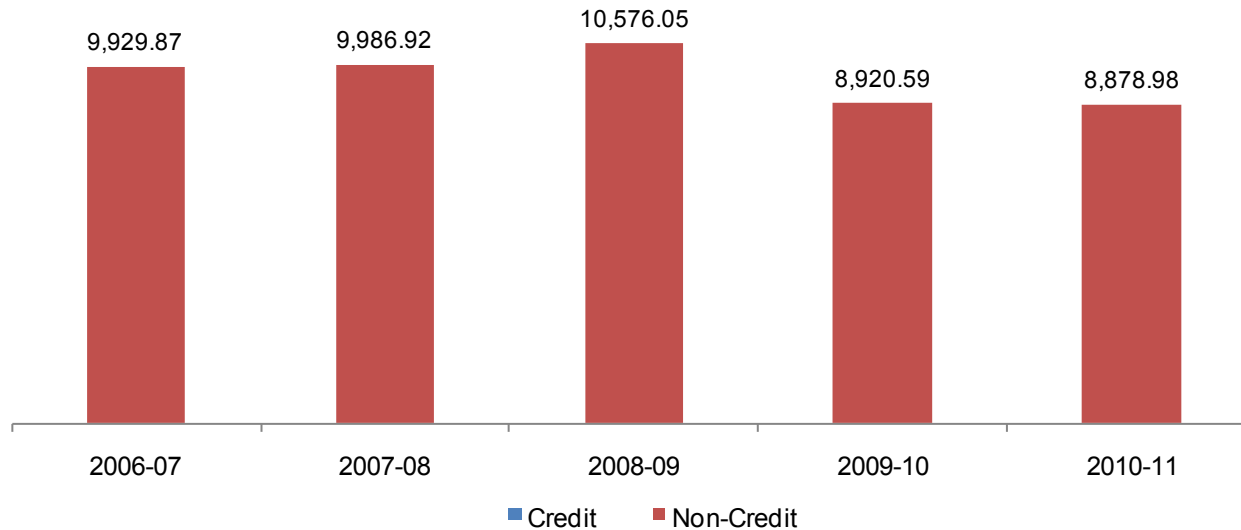


Table 3.1. Continuing Education Resident & Non Resident Annual

	2006-07	2007-08	2008-09	2009-10	2010-11
Credit	0.00	0.00	0.00	0.00	0.00
Non-Credit	9,929.87	9,986.92	10,576.05	8,920.59	8,878.98
Total	9,929.87	9,986.92	10,576.05	8,920.59	8,878.98

Source: SDCCD Information System

Continuing Education Section III: Productivity (Enrollments)

Enrollments: The enrollment trend for the on campus mode of instruction decreased for the summer (40%), fall (24%), and spring (18%) terms between 2006/07 and 2010/11. The enrollment trend for the online mode of instruction increased for the summer (212%), fall (146%), and spring (221%) terms between 2007/08 and 2010/11.

Figure 3.2.1 Continuing Education Enrollments (Summer)

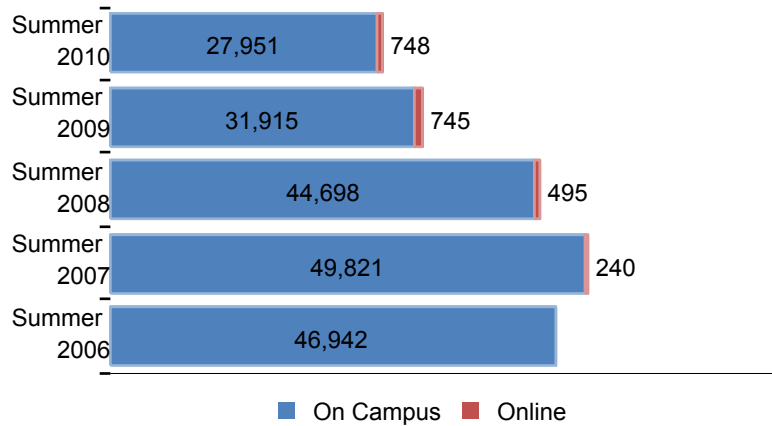


Figure 3.2.2 Continuing Education Enrollments (Fall)

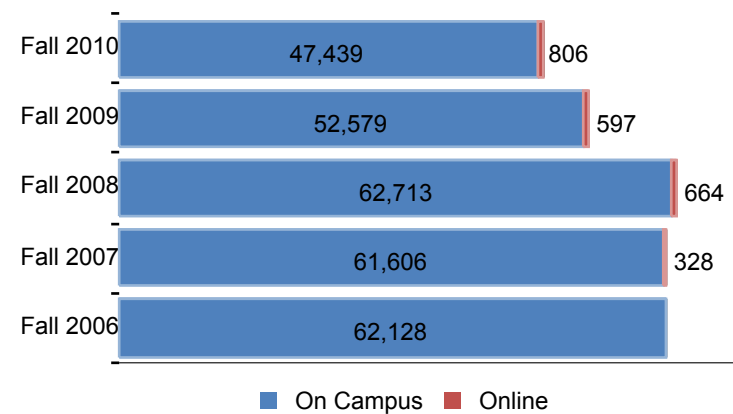
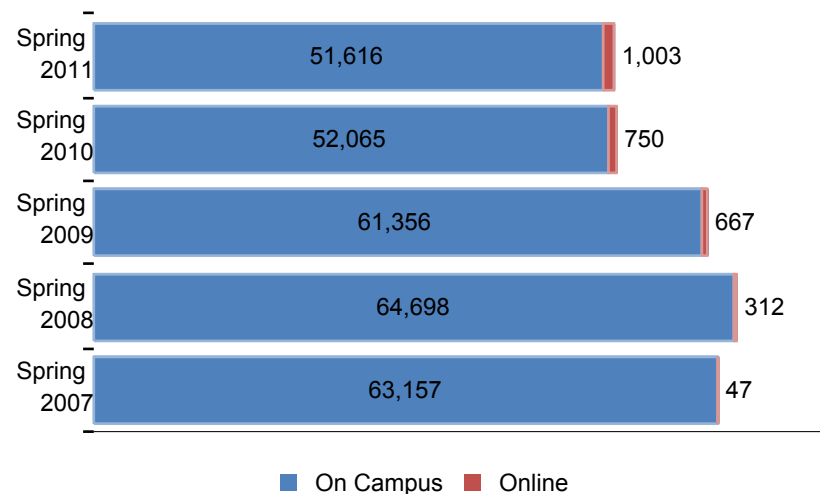


Figure 3.2.3. Continuing Education Enrollments (Spring)



Continuing Education Section III: Productivity (Enrollments)

Table 3.2. Continuing Education Enrollments

	On Campus	Online	Total
Summer 2006	46,942	0	46,942
Summer 2007	49,821	240	50,061
Summer 2008	44,698	495	45,193
Summer 2009	31,915	745	32,660
Summer 2010	27,951	748	28,699
Total	201,327	2,228	203,555

	On Campus	Online	Total
Fall 2006	62,128	0	62,128
Fall 2007	61,606	328	61,934
Fall 2008	62,713	664	63,377
Fall 2009	52,579	597	53,176
Fall 2010	47,439	806	48,245
Total	286,465	2,395	288,860

	On Campus	Online	Total
Spring 2007	63,157	47	63,204
Spring 2008	64,698	312	65,010
Spring 2009	61,356	667	62,023
Spring 2010	52,065	750	52,815
Spring 2011	51,616	1,003	52,619
Total	292,892	2,779	295,671

Source: SDCCD Information System

**Section IV
Human Resources**

Continuing Education Section IV: Human Resources

This section of the Fact Book contains information on the number and classification of employees during the Fall 2010 semester. The information is reported as follows:

- 1) Gender
- 2) Ethnicity
- 3) Employment Type

Continuing Education Section IV: Human Resources

Fall 2010 Employee Breakdown: There were a total of 718 employees working at Continuing Education during Fall 2010. The largest group, over half of the Continuing Education employees (61%), comprised adjunct faculty, followed by contract faculty (14%), classified staff (13%), and non-academic hourly (9%). Supervisory staff and management constituted the smallest proportions of Continuing Education employees at 1% and 2%, respectively.

The ethnic breakdown showed that White employees comprised 55% of the total employee population, followed by Latino employees (18%), and African American employees constituted 10% of the Continuing Education workforce. Among classified staff, Latino employees comprised 31% of the employee demographic breakdown. White employees constituted 26% of the classified staff positions and made up nearly two-thirds of the contract and adjunct faculty positions (64% & 65%, respectively) compared to all other ethnic groups. White employees comprised 42% of the management positions and 70% of the supervisory positions. Latino employees constituted 17% of the management positions and 10% of the supervisory positions. African American employees comprised 8% of the management positions and almost one-tenth (10%) of the supervisory positions.

Figure 5.1. Continuing Education Fall 2010 Employees by Employment Type

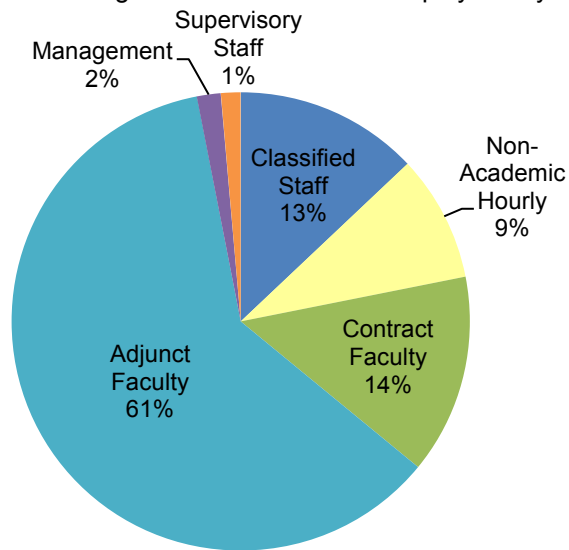
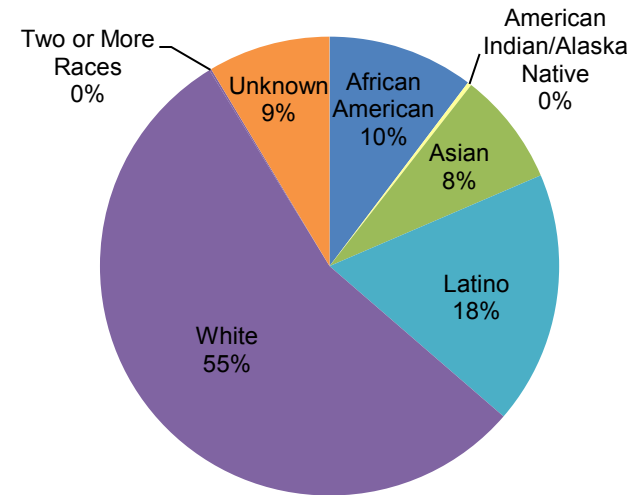


Figure 5.2. Continuing Education Fall 2010 Employees by Ethnicity



Continuing Education Section IV: Human Resources

Table 5.1. Continuing Education Fall 2010 Employment by Ethnicity

	African American		American Indian/ Alaska Native		Asian		Latino		Native Hawaiian or Other Pacific Islander		White		Two or More Races		Unreported		Total
Total Employees:	74	10%	2	0%	56	8%	128	18%	0	0%	395	55%	1	0%	62	9%	718
Male:	25	12%	0	0%	17	8%	37	18%	0	0%	101	49%	1	0%	26	13%	207
Female:	49	10%	2	0%	39	8%	91	18%	0	0%	294	58%	0	0%	36	7%	511
Classified Staff:	16	17%	1	1%	10	11%	29	31%	0	0%	24	26%	0	0%	13	14%	93
Male:	3	13%	0	0%	2	9%	6	26%	0	0%	9	39%	0	0%	3	13%	23
Female:	13	19%	1	1%	8	11%	23	33%	0	0%	15	21%	0	0%	10	14%	70
Non-Academic Hourly:	15	23%	0	0%	13	20%	23	36%	0	0%	9	14%	0	0%	4	6%	64
Male:	8	33%	0	0%	6	25%	5	21%	0	0%	2	8%	0	0%	3	13%	24
Female:	7	18%	0	0%	7	18%	18	45%	0	0%	7	18%	0	0%	1	3%	40
Contract Faculty:	4	4%	1	1%	3	3%	16	16%	0	0%	65	64%	0	0%	12	12%	101
Male:	1	4%	0	0%	1	4%	4	15%	0	0%	15	56%	0	0%	6	22%	27
Female:	3	4%	1	1%	2	3%	12	16%	0	0%	50	68%	0	0%	6	8%	74
Adjunct Faculty:	37	8%	0	0%	29	7%	57	13%	0	0%	285	65%	1	0%	29	7%	438
Male:	13	10%	0	0%	7	6%	20	16%	0	0%	74	59%	1	1%	11	9%	126
Female:	24	8%	0	0%	22	7%	37	12%	0	0%	211	68%	0	0%	18	6%	312
Management:	1	8%	0	0%	1	8%	2	17%	0	0%	5	42%	0	0%	3	25%	12
Male:	0	0%	0	0%	1	20%	1	20%	0	0%	1	20%	0	0%	2	40%	5
Female:	1	14%	0	0%	0	0%	1	14%	0	0%	4	57%	0	0%	1	14%	7
Supervisory Staff:	1	10%	0	0%	0	0%	1	10%	0	0%	7	70%	0	0%	1	10%	10
Male:	0	0%	0	0%	0	0%	1	50%	0	0%	0	0%	0	0%	1	50%	2
Female:	1	13%	0	0%	0	0%	0	0%	0	0%	7	88%	0	0%	0	0%	8

Source: SDCCD Information System

Table 5.2. Continuing Education Employees by Gender and Employment Status

	Gender		Employment Status	
	Female	71%	Full-Time/Contract	30%
Male	29%	Hourly/Adjunct	70%	

Source: SDCCD Information System