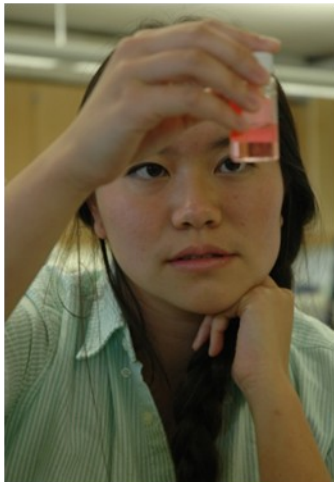


2
0
1
1



Fact Book

San Diego Community College District



Prepared by:
Office of Institutional Research and Planning
September 2011

SDCCD Fact Book 2011: Table of Contents

Overview	1	Annual Retention Rates	
Section I. Headcount and Student Characteristics	2	Overall	34
Section Overview	3	By Gender.....	35
Overall	4	By Ethnicity.....	36
By Gender.....	5	By Age.....	37
By Ethnicity.....	6	Annual GPA	
By Age.....	7	Overall	38
By Enrollment Status	8	By Gender.....	39
By Educational Objective	9	By Ethnicity	40
By Primary Language.....	11	By Age.....	41
By Prior Education Level	12	Annual Awards Conferred	
By Service Area of Residence	13	Overall	42
By First Generation.....	14	By Gender.....	43
By Income Level	15	By Ethnicity.....	46
By DSPS	16	By Age.....	53
By EOPS.....	17	Annual Transfer	
By Units Attempted by Units Earned	18	Overall	59
Section II. Fall to Spring Term Persistence Rates	20	By Gender.....	60
Section Overview	21	By Ethnicity.....	61
Overall	22	By Age.....	62
By Gender.....	23	By CSU-UC/Private/Out-of-State.....	63
By Ethnicity.....	24	By CSU/UC.....	64
By Age.....	26	By Institution Type (Private vs. Public).....	65
Section III. Student Outcomes	28	Section IV. Productivity and Efficiency	66
Section Overview	29	Section Overview	67
Annual Success Rates		Annual FTES.....	68
Overall	30	Enrollments: Online and On Campus.....	69
By Gender.....	31	Fill Rates	71
By Ethnicity.....	32	Load	73
By Age.....	33	Section V. Human Resources	74
		Section Overview	75
		Fall 2010 Employee Breakdown.....	76

SDCCD Fact Book 2011: Overview

This Fact Book is a publication of the Office of Institutional Research and Planning for the San Diego Community College District. It is designed to serve the information needs of the community with a primary focus on student enrollment, demographics, and outcomes.

The Fact Book is a rich source of districtwide trend information that may be used for planning and decision making. The book contains the following five sections:

- 1) **Headcount and Student Characteristics.** Provides information on student demographic characteristics (e.g., age, ethnicity, and educational objective) over five years.
- 2) **Term Persistence Rates.** Provides information about first-time to college students who complete a fall term and enroll in the subsequent spring term. The information is also reported by demographic characteristics of interest.
- 3) **Student Outcomes.** Provides information on students' successful course completion rates, retention rates, GPA, awards conferred, and transfer volume. All of the information is provided in summary form, as well as demographic characteristics of interest.
- 4) **Productivity and Efficiency.** Provides information on annual FTES, enrollment and fill rates, and Load (WSCH/FTEF).
- 5) **Human Resources.** Provides information on the number of employees by ethnicity, gender and employment type.

Each section contains the following benchmarks: 1) The percentage change over the five year period being reported, 2) The collegewide average, and 3) The "Districtwide" (includes Continuing Education) or "All Colleges" in the district averages (excludes Continuing Education).

**Section I
Headcount and Student Characteristics**

SDCCD Section I: Headcount and Student Characteristics

This section of the Fact Book contains student headcount by various student characteristics. The headcount figures are single student counts (unduplicated headcount) based on official census counts at the end of the semester (all students who dropped or never attended prior to the class census date were not included). Furthermore, all cancelled classes are excluded from analyses. The headcount information is reported over a period of five years to analyze trends and establish benchmarks. Headcount information is reported by the following segments:

- 1) Overall (Colleges and Continuing Education)
- 2) Gender (Colleges and Continuing Education)
- 3) Ethnicity (Colleges and Continuing Education)
- 4) Age (Colleges and Continuing Education)
- 5) Enrollment Status (Colleges)
- 6) Educational Objective (Colleges)
- 7) Primary Language (Colleges)
- 8) Prior Education Level (Colleges)
- 9) Service Area of Residence (Colleges and Continuing Education)
- 10) First Generation (Colleges)
- 11) Income Level (Colleges and Continuing Education)
- 12) DSPS (Colleges)
- 13) EOPS (Colleges)
- 14) Units Attempted by Units Earned (Colleges)

SDCCD Section I: Headcount and Student Characteristics

Overall Headcount: Unduplicated student headcount showed a 9% decrease between Summer 2006 and Summer 2010 (from 46,323 to 42,166) with a peak headcount in Summer 2008 of 51,109. Unduplicated headcount also showed a decline between Fall 2006 and Fall 2010 (from 80,699 to 78,762) with a peak in 2008 then a continuous drop in both 2009 and 2010. The same trend held true for the spring terms, with a 3% decrease between Spring 2007 and Spring 2011.

Figure 1.1. SDCCD Overall Headcount (Fall)

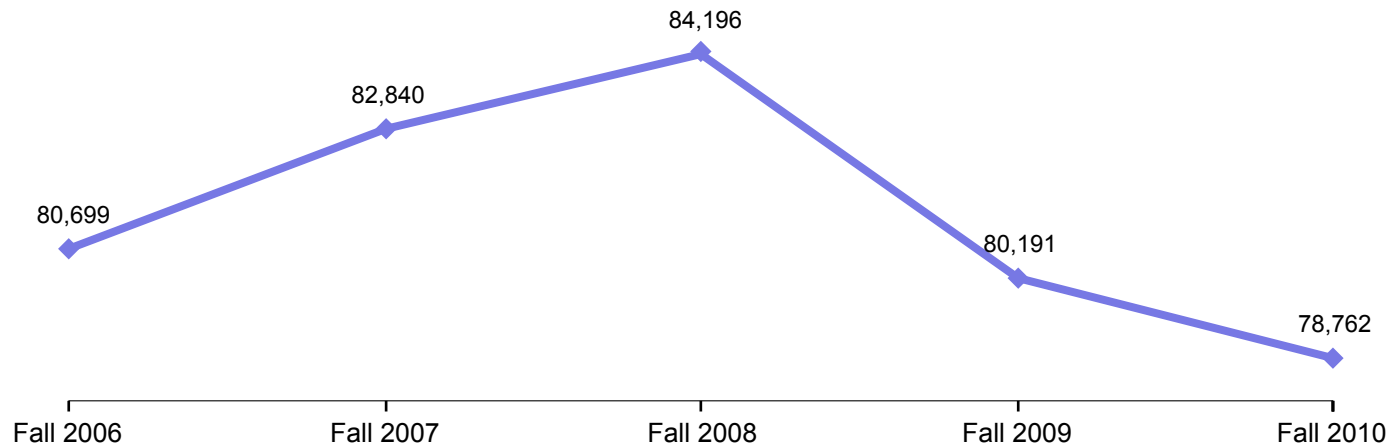


Table 1.1.1. SDCCD Overall Headcount (Summer)

	Summer 06	Summer 07	Summer 08	Summer 09	Summer 10	% Change Summer 06-10
Total	46,323	50,097	51,109	46,577	42,166	-9%

Source: SDCCD Information System

Table 1.1.2. SDCCD Overall Headcount (Fall)

	Fall 06	Fall 07	Fall 08	Fall 09	Fall 10	% Change Fall 06-10
Total	80,699	82,840	84,196	80,191	78,762	-2%

Source: SDCCD Information System

Table 1.1.3. SDCCD Overall Headcount (Spring)

	Spring 07	Spring 08	Spring 09	Spring 10	Spring 11	% Change Spring 07-11
Total	83,298	84,163	84,551	79,527	80,951	-3%

Source: SDCCD Information System

SDCCD Section I: Headcount and Student Characteristics

Headcount by Gender: On average, the female student headcount (55%) was higher than their male student counterpart (43%), which has remained fairly consistent between Fall 2006 and Fall 2010. Male student headcount increased 3% , while the female student headcount decreased 1% between Fall 2006 and Fall 2010.

Figure 1.2. SDCCD Headcount by Gender

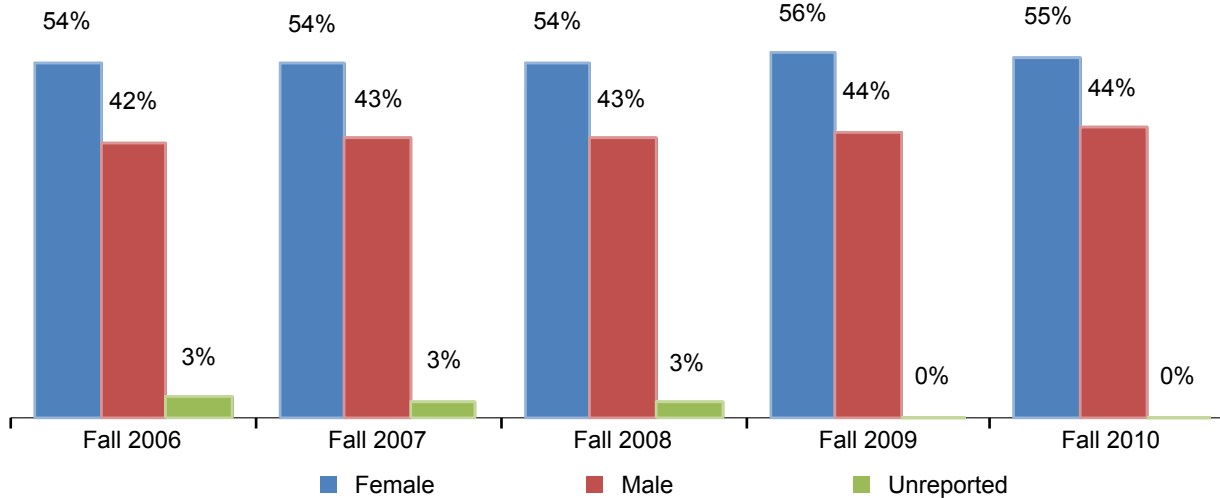


Table 1.2. SDCCD Headcount by Gender

	Fall 06		Fall 07		Fall 08		Fall 09		Fall 10		% Change Fall 06-10	Districtwide Average Fall 06-10
Female	43,934	54%	45,005	54%	45,862	54%	44,866	56%	43,607	55%	-1%	55%
Male	34,124	42%	35,577	43%	36,224	43%	35,192	44%	35,041	44%	3%	43%
Unreported	2,641	3%	2,258	3%	2,110	3%	133	0%	114	0%	-96%	2%
Total	80,699	100%	82,840	100%	84,196	100%	80,191	100%	78,762	100%	-2%	100%

Source: SDCCD Information System

SDCCD Section I: Headcount and Student Characteristics

Headcount by Ethnicity: The ethnic groups that comprised the largest headcounts between Fall 2006 and Fall 2010 were White students (35%), Latino students (28%), and Asian/Pacific Islander students (12%) on average. Districtwide, the students that were categorized as 'Other' ethnicities increased 55% in contrast to the Filipino student population, which declined 9% between Fall 2006 and Fall 2010.

Figure 1.3. SDCCD Headcount by Ethnicity

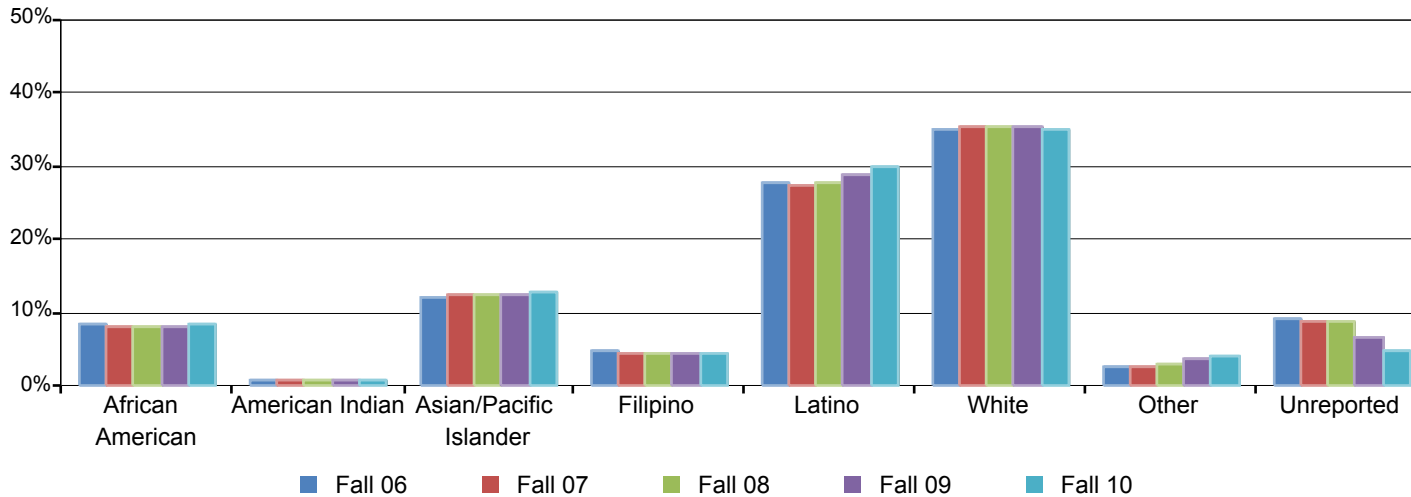


Table 1.3. SDCCD Headcount by Ethnicity

	Fall 06		Fall 07		Fall 08		Fall 09		Fall 10		% Change Fall 06-10	Districtwide Average Fall 06-10
African American	6,850	8%	6,694	8%	6,680	8%	6,581	8%	6,657	8%	-3%	8%
American Indian	622	1%	702	1%	666	1%	623	1%	512	1%	-18%	1%
Asian/Pacific Islander	9,701	12%	10,254	12%	10,414	12%	9,868	12%	10,004	13%	3%	12%
Filipino	3,793	5%	3,773	5%	3,731	4%	3,442	4%	3,441	4%	-9%	4%
Latino	22,169	27%	22,609	27%	23,135	27%	23,149	29%	23,536	30%	6%	28%
White	28,157	35%	29,240	35%	29,842	35%	28,296	35%	27,546	35%	-2%	35%
Other	2,083	3%	2,264	3%	2,360	3%	2,821	4%	3,231	4%	55%	3%
Unreported	7,324	9%	7,304	9%	7,368	9%	5,411	7%	3,835	5%	-48%	8%
Total	80,699	100%	82,840	100%	84,196	100%	80,191	100%	78,762	100%	-2%	100%

Source: SDCCD Information System

SDCCD Section I: Headcount and Student Characteristics

Headcount by Age: Between Fall 2006 and Fall 2010, the districtwide age groups with the largest headcounts, on average, were students between ages 18 and 24 years old (36%), students age 50 and older (19%), and students ages 30-39 (16%). Students under 18 years old increased 21%, while students between ages 40 and 49 years old decreased 5% from Fall 2006 to Fall 2010.

Figure 1.4 SDCCD Headcount by Age

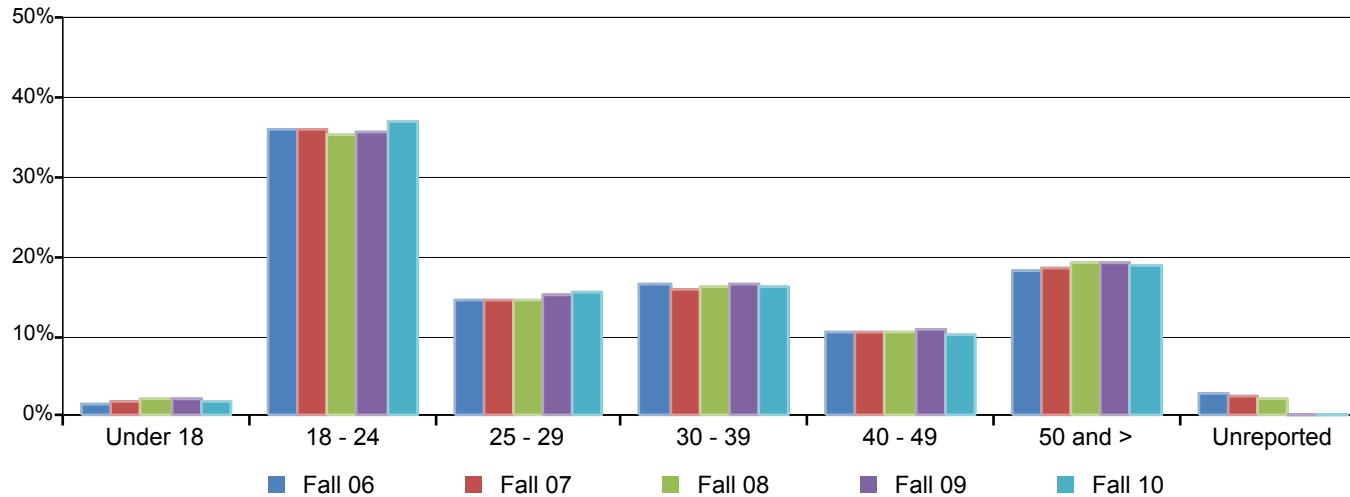


Table 1.4 SDCCD Headcount by Age

	Fall 06		Fall 07		Fall 08		Fall 09		Fall 10		% Change Fall 06-10	Districtwide Average Fall 06-10
Under 18	1,264	2%	1,559	2%	1,797	2%	1,693	2%	1,524	2%	21%	2%
18 - 24	29,165	36%	29,811	36%	29,738	35%	28,619	36%	29,182	37%	0%	36%
25 - 29	11,631	14%	12,002	14%	12,162	14%	12,271	15%	12,194	15%	5%	15%
30 - 39	13,303	16%	13,309	16%	13,569	16%	13,408	17%	12,901	16%	-3%	16%
40 - 49	8,565	11%	8,785	11%	8,920	11%	8,645	11%	8,129	10%	-5%	11%
50 and >	14,638	18%	15,311	18%	16,085	19%	15,547	19%	14,827	19%	1%	19%
Unreported	2,133	3%	2,063	2%	1,925	2%	8	0%	5	0%	-100%	2%
Total	80,699	100%	82,840	100%	84,196	100%	80,191	100%	78,762	100%	-2%	100%

Source: SDCCD Information System

SDCCD Section I: Headcount and Student Characteristics

Headcount by Enrollment Status: On average, 62% of the general student population for all colleges in the district comprised continuing students. The number of continuing students who were enrolled in the colleges increased 19%, from 26,600 students in Fall 2006 to 31,556 in Fall 2010. However, the number of first-time transfer students who were enrolled in the colleges decreased 19% between Fall 2006 and Fall 2010. The number of first-time to college students, on average, comprised 11% of the student population, while first-time transfer students comprised 12% of the population between Fall 2006 and Fall 2010.

Figure 1.5. All Colleges Headcount by Enrollment Status

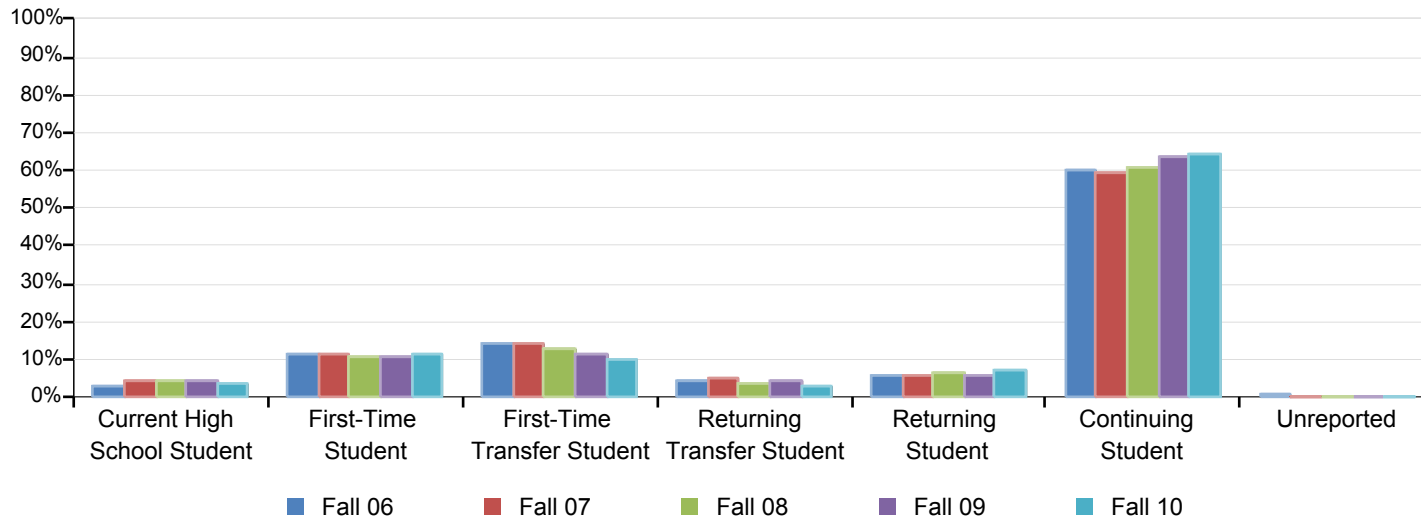


Table 1.5. All Colleges Headcount by Enrollment Status

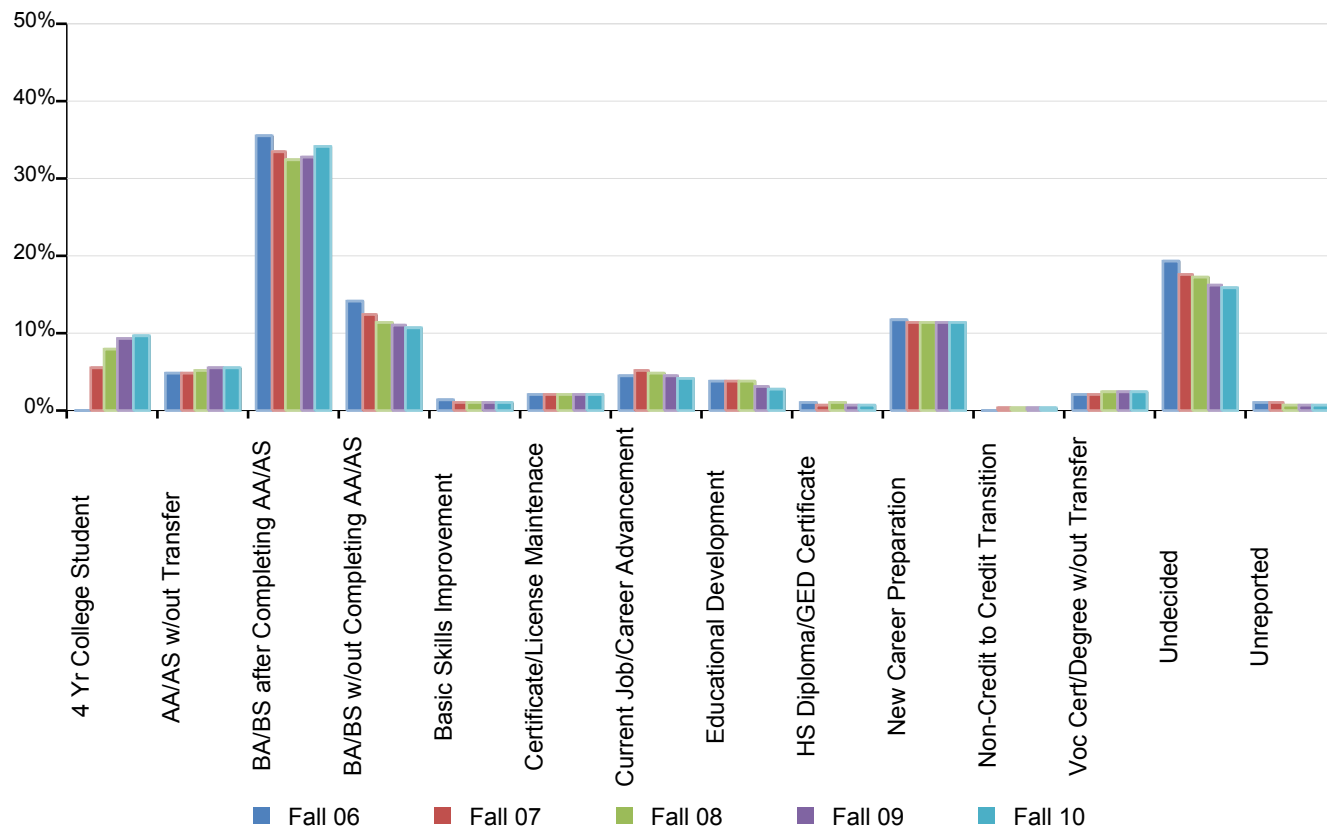
	Fall 06		Fall 07		Fall 08		Fall 09		Fall 10		% Change Fall 06-10	All Colleges Average Fall 06-10
Current High School Student	1,509	3%	1,906	4%	2,151	5%	1,952	4%	1,780	4%	18%	4%
First-Time Student	4,992	11%	5,182	11%	5,058	11%	5,098	11%	5,535	11%	11%	11%
First-Time Transfer Student	6,217	14%	6,583	14%	6,179	13%	5,296	11%	5,047	10%	-19%	12%
Returning Transfer Student	2,082	5%	2,280	5%	1,900	4%	2,046	4%	1,610	3%	-23%	4%
Returning Student	2,535	6%	2,877	6%	3,105	7%	2,799	6%	3,417	7%	35%	6%
Continuing Student	26,600	60%	27,729	59%	28,970	61%	30,322	64%	31,556	64%	19%	62%
Unreported	338	1%	171	0%	188	0%	132	0%	127	0%	-62%	0%
Total	44,273	100%	46,728	100%	47,551	100%	47,645	100%	49,072	100%	11%	100%

Source: SDCCD Information System

SDCCD Section I: Headcount and Student Characteristics

Headcount by Educational Objective: Approximately half of the general student population for all colleges in the district (46%) selected transfer to obtain a BA/BS with or without completing an AA/AS degree as their educational objective during the five terms being reported. Between Fall 2006 and Fall 2010, the educational objectives that made the most gain in selection were to obtain an AA/AS degree without transfer (increased by 36%) and Vocational certificate/degree without transfer (increased by 28%). In contrast, students who selected transfer to obtain a BA/BS without completing an AA/AS degree or Basic Skills improvement as educational objectives, decreased 15% and 14%, respectively, among the general student population for all colleges in the district.

Figure 1.6. All Colleges Headcount by Educational Objective



SDCCD Section I: Headcount and Student Characteristics

Table 1.6. All Colleges Headcount by Educational Objective

	Fall 06		Fall 07		Fall 08		Fall 09		Fall 10		% Change Fall 06-10	All Colleges Average Fall 06-10
4 Yr College Student	0	0%	2,591	6%	3,705	8%	4,327	9%	4,690	10%	---	0%
AA/AS w/out Transfer	2,016	5%	2,196	5%	2,344	5%	2,551	5%	2,737	6%	36%	5%
BA/BS after Completing AA/AS	15,665	35%	15,606	33%	15,451	32%	15,670	33%	16,635	34%	6%	34%
BA/BS w/out Completing AA/AS	6,217	14%	5,779	12%	5,413	11%	5,245	11%	5,284	11%	-15%	12%
Basic Skills Improvement	504	1%	447	1%	423	1%	407	1%	431	1%	-14%	1%
Certificate/License Maintenance	884	2%	870	2%	945	2%	989	2%	1,032	2%	17%	2%
Current Job/Career Advancement	1,988	4%	2,325	5%	2,167	5%	2,116	4%	1,922	4%	-3%	4%
Educational Development	1,691	4%	1,719	4%	1,738	4%	1,422	3%	1,305	3%	-23%	3%
HS Diploma/GED Certificate	311	1%	323	1%	351	1%	322	1%	295	1%	-5%	1%
New Career Preparation	5,113	12%	5,303	11%	5,425	11%	5,345	11%	5,507	11%	8%	11%
Non-Credit to Credit Transition	0	0%	41	0%	48	0%	60	0%	77	0%	---	0%
Voc Cert/Degree w/out Transfer	931	2%	968	2%	1,084	2%	1,143	2%	1,188	2%	28%	2%
Undecided	8,542	19%	8,170	17%	8,129	17%	7,743	16%	7,727	16%	-10%	17%
Unreported	411	1%	390	1%	328	1%	305	1%	242	0%	-41%	1%
Total	44,273	100%	46,728	100%	47,551	100%	47,645	100%	49,072	100%	11%	100%

Source: SDCCD Information System

Note: 4 Yr College Student and Non-Credit to Credit Transition was not an option prior to Fall 2007.

SDCCD Section I: Headcount and Student Characteristics

Headcount by Primary Language: On average, 93% of the general student population for all colleges in the district spoke English as their primary language. Both students who reported speaking English as their primary language and those who spoke a language other than English increased between Fall 2006 and Fall 2010 (11% each).

Table 1.7. All Colleges Headcount by Primary Language

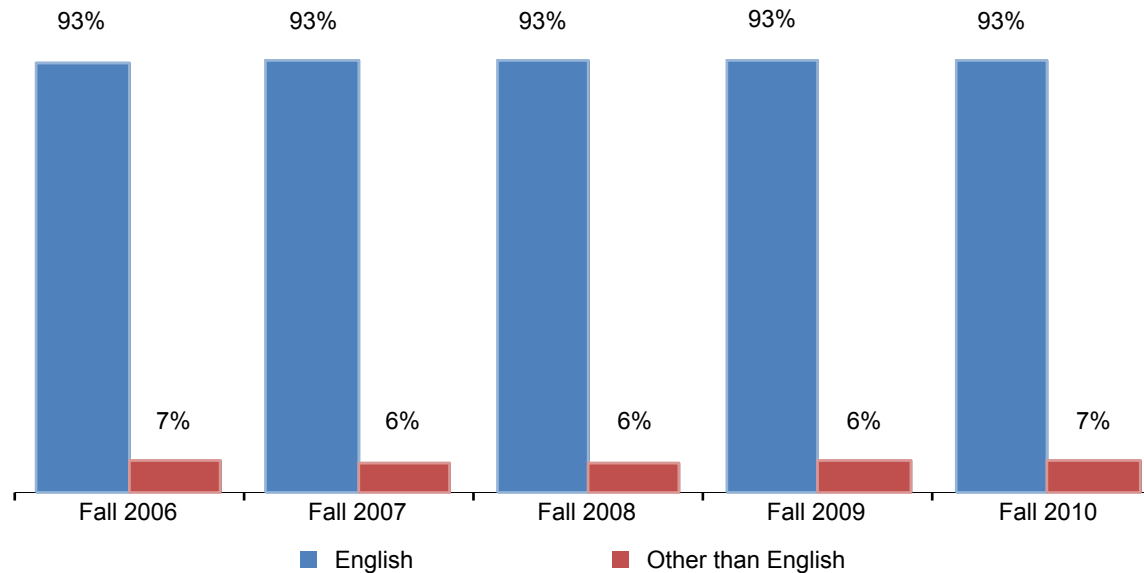


Table 1.7. All Colleges Headcount by Primary Language

	Fall 06		Fall 07		Fall 08		Fall 09		Fall 10		% Change Fall 06-10	All Colleges Average Fall 06-10
English	41,236	93%	43,624	93%	44,450	93%	44,543	93%	45,829	93%	11%	93%
Other than English	2,920	7%	3,028	6%	3,062	6%	3,093	6%	3,233	7%	11%	7%
Unreported	117	0%	76	0%	39	0%	9	0%	10	0%	-91%	0%
Total	44,273	100%	46,728	100%	47,551	100%	47,645	100%	49,072	100%	11%	100%

Source: SDCCD Information System

SDCCD Section I: Headcount and Student Characteristics

Headcount by Prior Educational Level: Between Fall 2006 and Fall 2010, a majority of the general student population for all colleges in the district reported that they completed high school or higher education degree (83%) on average. Both students who were special admit/K-12 and students who achieved a GED/High School certificate increased 13% and 22%, respectively, between Fall 2006 and Fall 2010. On average, 11% of the colleges' general student population had a bachelors degree or higher.

Figure 1.8. All Colleges Headcount by Prior Education Level

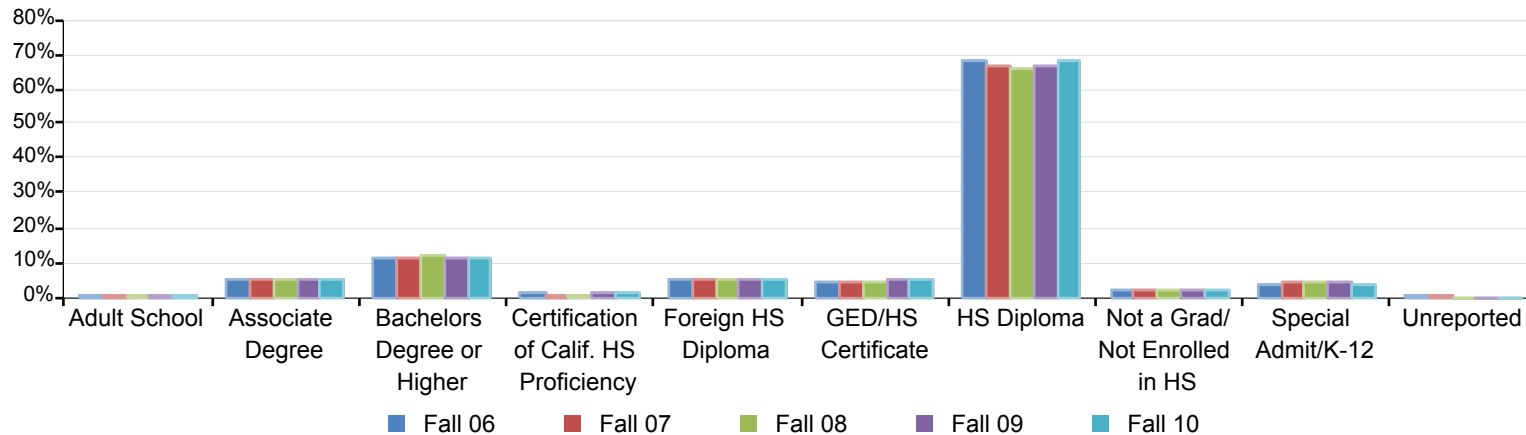


Table 1.8. All Colleges Headcount by Prior Education Level

	Fall 06		Fall 07		Fall 08		Fall 09		Fall 10		% Change Fall 06-10	All Colleges Average Fall 06-10
Adult School	101	0%	94	0%	123	0%	128	0%	128	0%	27%	0%
Associate Degree	2,217	5%	2,436	5%	2,384	5%	2,365	5%	2,335	5%	5%	5%
Bachelors Degree or Higher	4,911	11%	5,421	12%	5,750	12%	5,507	12%	5,351	11%	9%	11%
Certification of Calif. HS Proficiency	342	1%	304	1%	347	1%	351	1%	360	1%	5%	1%
Foreign HS Diploma	2,371	5%	2,471	5%	2,371	5%	2,420	5%	2,516	5%	6%	5%
GED/HS Certificate	2,018	5%	2,162	5%	2,203	5%	2,349	5%	2,453	5%	22%	5%
HS Diploma	29,992	68%	31,082	67%	31,417	66%	31,777	67%	33,368	68%	11%	67%
Not a Grad/Not Enrolled in HS	748	2%	835	2%	826	2%	845	2%	864	2%	16%	2%
Special Admit/K-12	1,502	3%	1,880	4%	2,115	4%	1,903	4%	1,697	3%	13%	4%
Unreported	71	0%	43	0%	15	0%	0	0%	0	0%	-100%	0%
Total	44,273	100%	46,728	100%	47,551	100%	47,645	100%	49,072	100%	11%	100%

Source: SDCCD Information System

SDCCD Section I: Headcount and Student Characteristics

Headcount by Service Area of Residence: Between Fall 2006 and Fall 2010, on average, 37% of the districtwide general student population resided within the City College service area, 23% of the districtwide general student population resided within the Mesa College service area, and 10% of the districtwide general student population resided within the Miramar College service area. Twenty-nine percent of students lived outside of the districtwide service area.

Figure 1.9. SDCCD Headcount by Service Area of Residence

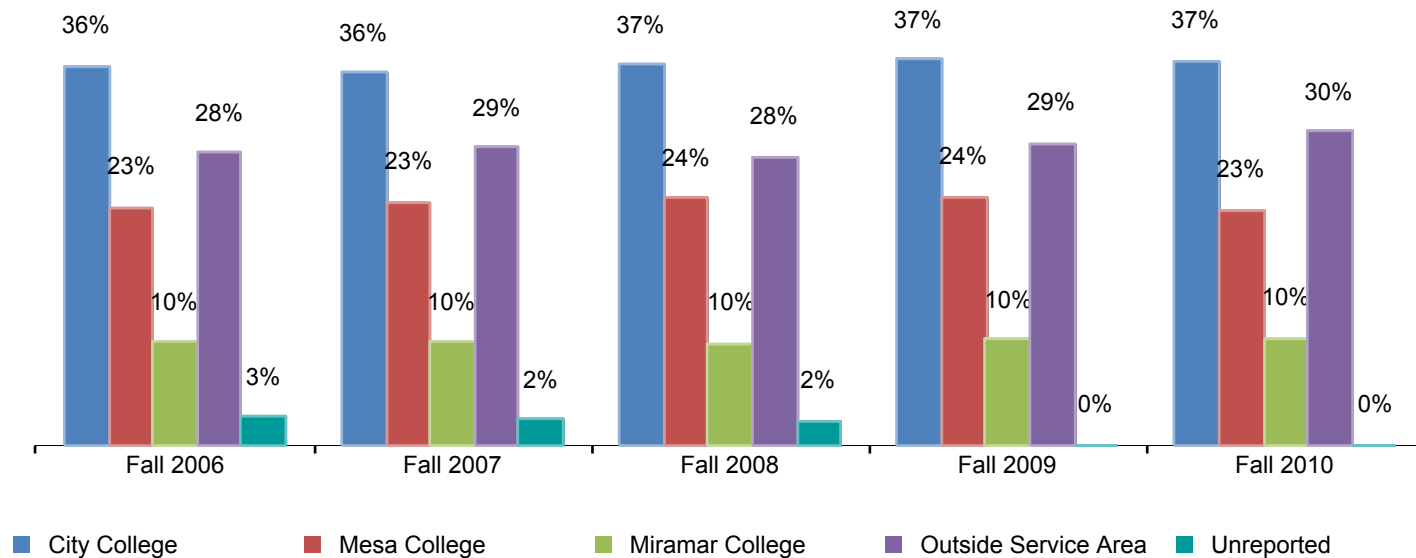


Table 1.9. SDCCD Headcount by Service Area of Residence

	Fall 06	Fall 07	Fall 08	Fall 09	Fall 10	% Change Fall 06-10	Districtwide Average Fall 06-10
City College	29,443 36%	29,698 36%	30,782 37%	29,742 37%	29,151 37%	-1%	37%
Mesa College	18,481 23%	19,302 23%	19,936 24%	19,114 24%	17,774 23%	-4%	23%
Miramar College	8,022 10%	8,154 10%	8,221 10%	8,084 10%	8,049 10%	0%	10%
Outside Service Area	22,625 28%	23,628 29%	23,339 28%	23,251 29%	23,788 30%	5%	29%
Unreported	2,128 3%	2,058 2%	1,918 2%	0 0%	0 0%	-100%	2%
Total	80,699 100%	82,840 100%	84,196 100%	80,191 100%	78,762 100%	-99%	100%

Source: SDCCD Information System

SDCCD Section I: Headcount and Student Characteristics

Headcount by First Generation: Between Fall 2006 and Fall 2010, on average, approximately one-quarter of the students reported being first generation college students (26%). Both groups of students, those who were and those who were not first generation college students, displayed an increase in headcount between Fall 2006 and Fall 2010 (20% & 9%, respectively).

Figure 1.10. All Colleges Headcount by First Generation

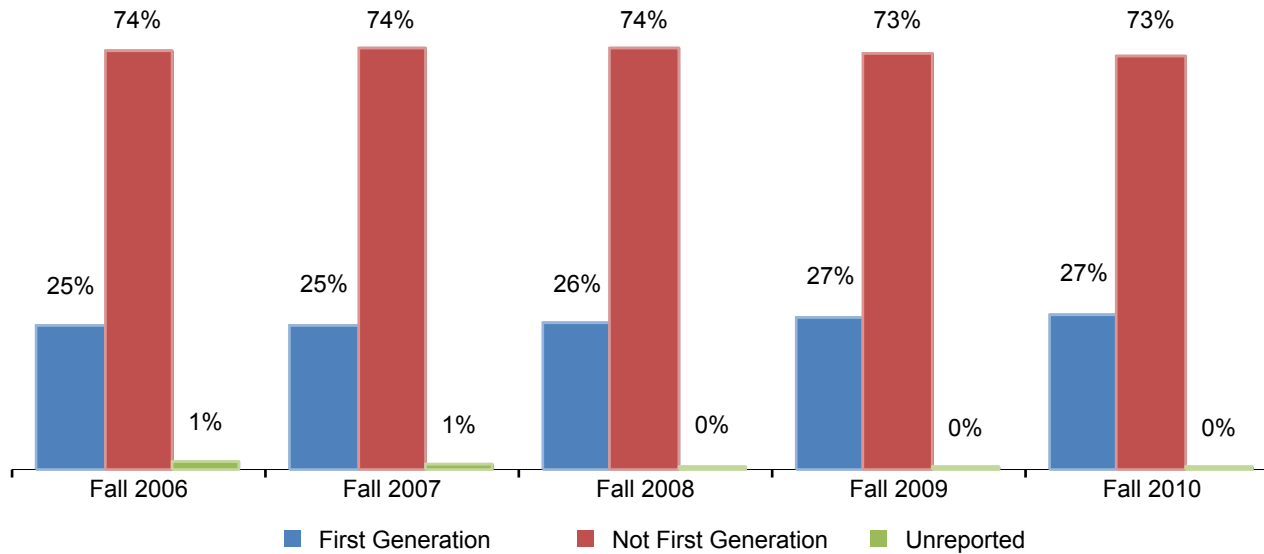


Table 1.10. All Colleges Headcount by First Generation

	Fall 06		Fall 07		Fall 08		Fall 09		Fall 10		% Change Fall 06-10	All Colleges Average Fall 06-10
First Generation	11,120	25%	11,829	25%	12,217	26%	12,749	27%	13,362	27%	20%	26%
Not First Generation	32,561	74%	34,531	74%	35,120	74%	34,757	73%	35,619	73%	9%	73%
Unreported	592	1%	368	1%	214	0%	139	0%	91	0%	-85%	1%
Total	44,273	100%	46,728	100%	47,551	100%	47,645	100%	49,072	100%	11%	100%

Source: SDCCD Information System

SDCCD Section I: Headcount and Student Characteristics

Headcount by Income Level: Between Fall 2006 and Fall 2010, nearly one-quarter (23%) of the districtwide general student population reported an annual income of \$33,000 or more on average. The number of students who reported an annual income of \$0-2,999, on average, increased 34% between Fall 2006 and Fall 2010. It should be noted that nearly one-fifth of the students did not report their income level (19%). Consequently, the data may not be representative of the actual income level of students enrolled within the district.

Figure 1.11. SDCCD Headcount by Income Level

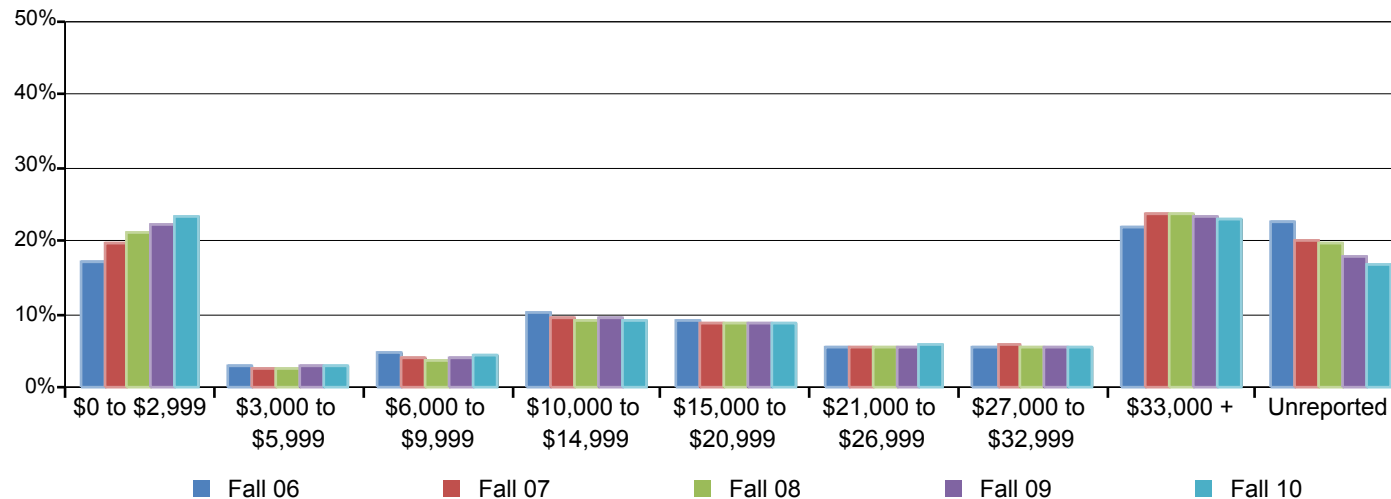


Table 1.11. SDCCD Headcount by Income Level

	Fall 06		Fall 07		Fall 08		Fall 09		Fall 10		% Change Fall 06-10	Districtwide Average Fall 06-10
\$0 to \$2,999	13,749	17%	16,311	20%	17,751	21%	17,923	22%	18,459	23%	34%	21%
\$3,000 to \$5,999	2,525	3%	2,353	3%	2,314	3%	2,338	3%	2,392	3%	-5%	3%
\$6,000 to \$9,999	3,886	5%	3,430	4%	3,251	4%	3,327	4%	3,482	4%	-10%	4%
\$10,000 to \$14,999	8,295	10%	7,815	9%	7,844	9%	7,778	10%	7,324	9%	-12%	10%
\$15,000 to \$20,999	7,389	9%	7,196	9%	7,291	9%	7,122	9%	6,884	9%	-7%	9%
\$21,000 to \$26,999	4,594	6%	4,623	6%	4,541	5%	4,350	5%	4,546	6%	-1%	6%
\$27,000 to \$32,999	4,630	6%	4,839	6%	4,807	6%	4,454	6%	4,356	6%	-6%	6%
\$33,000 +	17,537	22%	19,678	24%	19,942	24%	18,694	23%	18,125	23%	3%	23%
Unreported	18,094	22%	16,595	20%	16,455	20%	14,205	18%	13,194	17%	-27%	19%
Total	80,699	100%	82,840	100%	84,196	100%	80,191	100%	78,762	100%	-31%	100%

Source: SDCCD Information System

SDCCD Section I: Headcount and Student Characteristics

Headcount by Disability Support Programs and Services (DSPS): On average, 3% of the general student population for all colleges in the district received disability support services between Fall 2006 and Fall 2010. Moreover, the number of students who received and had not received disability services increased 10% and 11%, respectively, between Fall 2006 and Fall 2010.

Figure 1.12. All Colleges Headcount by Disability Support Programs and Services (DSPS)

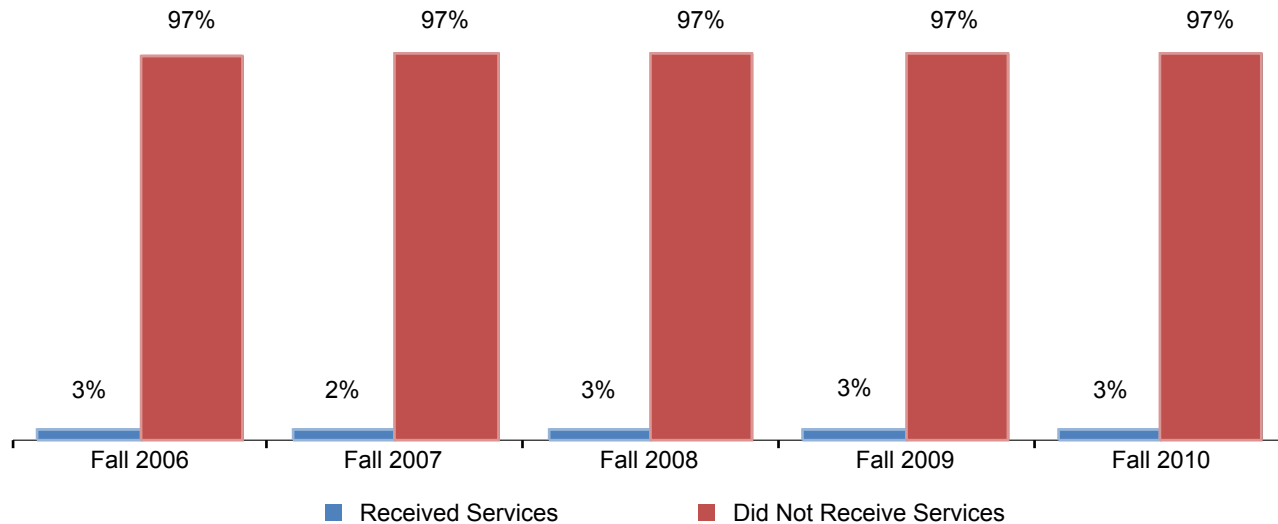


Figure 1.12. All Colleges Headcount by Disability Support Programs and Services (DSPS)

	Fall 06		Fall 07		Fall 08		Fall 09		Fall 10		% Change Fall 06-10	All Colleges Average Fall 06-10
Received Services	1,172	3%	1,144	2%	1,196	3%	1,316	3%	1,287	3%	10%	3%
Did Not Receive Services	43,030	97%	45,541	97%	46,340	97%	46,329	97%	47,785	97%	11%	97%
Unreported	71	0%	43	0%	15	0%	0	0%	0	0%	-100%	0%
Total	44,273	100%	46,728	100%	47,551	100%	47,645	100%	49,072	100%	11%	100%

Source: SDCCD Information System

SDCCD Section I: Headcount and Student Characteristics

Headcount by Extended Opportunity Programs and Services (EOPS): On average, 3% of the general student population for all colleges in the district received EOPS services between Fall 2006 and Fall 2010. There was a 64% decrease in the number of students who received EOPS services, while there was a 13% increase in the number of students who had not received EOPS services from Fall 2006 to Fall 2010.

Figure 1.13. All Colleges Headcount by Extended Opportunity Programs and Services (EOPS)

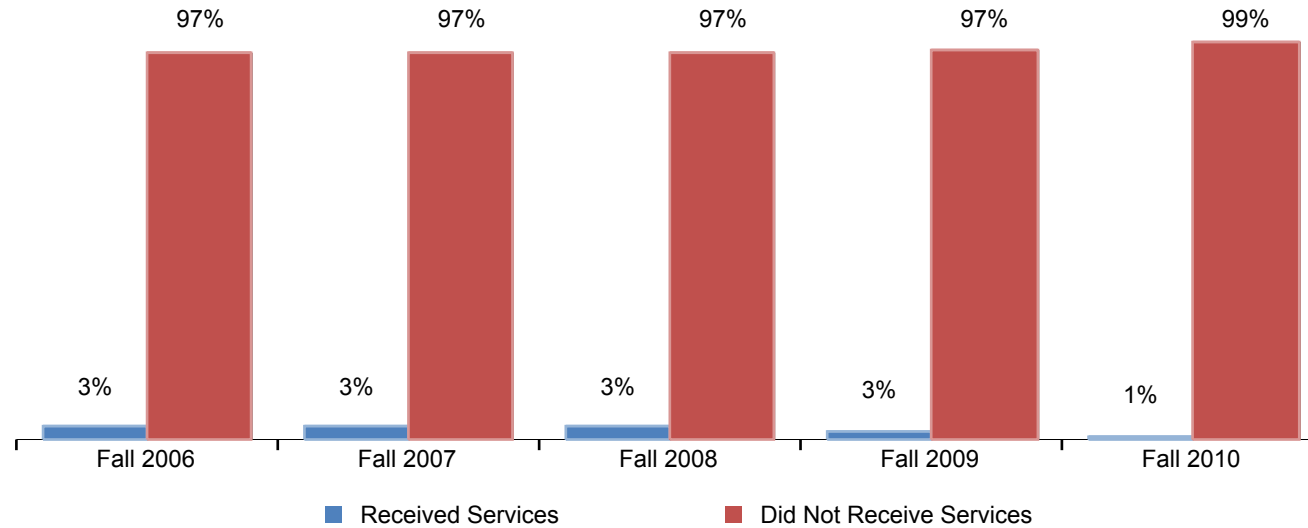


Table 1.13. All Colleges Headcount by Extended Opportunity Programs and Services (EOPS)

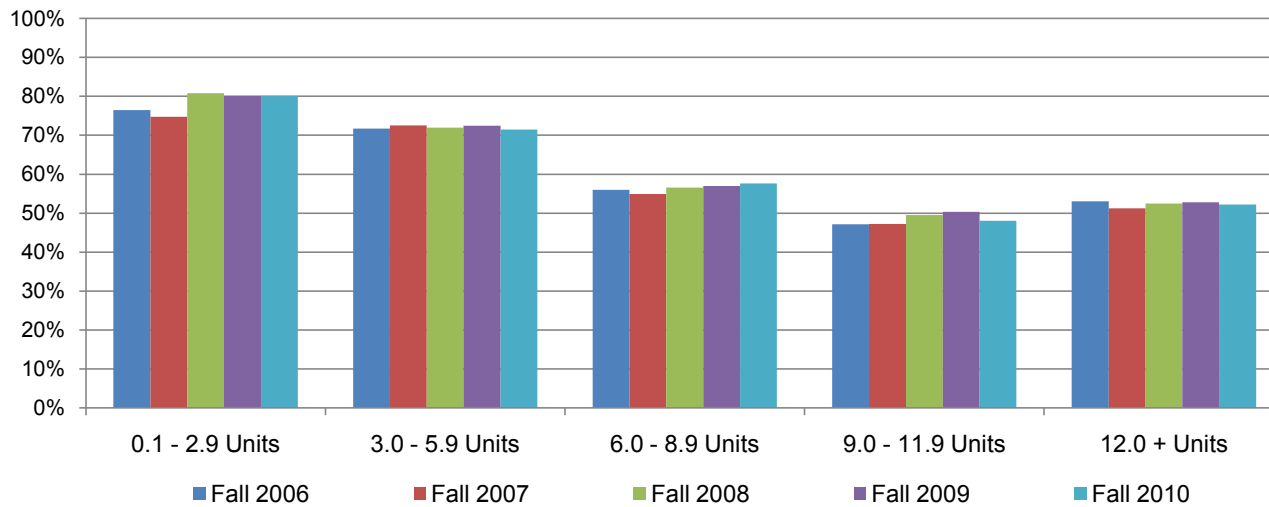
	Fall 06		Fall 07		Fall 08		Fall 09		Fall 10		% Change Fall 06-10	All Colleges Average Fall 06-10
Received Services	1,396	3%	1,519	3%	1,507	3%	1,201	3%	504	1%	-64%	3%
Did Not Receive Services	42,806	97%	45,166	97%	46,029	97%	46,444	97%	48,568	99%	13%	97%
Unreported	71	0%	43	0%	15	0%	0	0%	0	0%	-100%	0%
Total	44,273	100%	46,728	100%	47,551	100%	47,645	100%	49,072	100%	11%	100%

Source: SDCCD Information System

SDCCD Section I: Headcount and Student Characteristics

Headcount by Units Attempted by Units Earned: Table 1.14 shows the interplay between units attempted (in rows) and units earned (in columns). The greatest proportion of students who attempted and earned units were those in the 0.1-2.9 unit range on average (79%). The least proportion of students who attempted and earned units were those in the 9.0-11.9 unit range on average (48%). Students who attempted and earned between 9.0-11.9 units increased 28%, while students who attempted and earned between 3.0-5.9 units decreased 8% between Fall 2006 and Fall 2010.

Figure 1.14. All Colleges Headcount by Units Attempted by Units Earned



SDCCD Section I: Headcount and Student Characteristics

Table 1.14. All Colleges Headcount by Units Attempted by Units Earned

		Units Earned						
		0 Units	0.1 - 2.9 Units	3.0 - 5.9 Units	6.0 - 8.9 Units	9.0 - 11.9 Units	12.0 + Units	
Units Attempted	Fall 2006	0.1 - 2.9 Units	24%	76%				
		3.0 - 5.9 Units	27%	1%	72%			
		6.0 - 8.9 Units	21%	2%	21%	56%		
		9.0 - 11.9 Units	17%	1%	14%	21%	47%	
		12.0 + Units	9%	1%	8%	12%	17%	53%
Fall 2007	0.1 - 2.9 Units	25%	75%					
	3.0 - 5.9 Units	26%	1%	73%				
	6.0 - 8.9 Units	21%	2%	23%	55%			
	9.0 - 11.9 Units	16%	1%	14%	21%	47%		
	12.0 + Units	9%	1%	8%	12%	19%	51%	
Fall 2008	0.1 - 2.9 Units	19%	81%					
	3.0 - 5.9 Units	27%	1%	72%				
	6.0 - 8.9 Units	20%	2%	22%	57%			
	9.0 - 11.9 Units	15%	2%	13%	20%	49%		
	12.0 + Units	8%	1%	8%	12%	18%	52%	
Fall 2009	0.1 - 2.9 Units	20%	80%					
	3.0 - 5.9 Units	26%	1%	72%				
	6.0 - 8.9 Units	19%	2%	22%	57%			
	9.0 - 11.9 Units	14%	1%	14%	20%	50%		
	12.0 + Units	7%	1%	8%	12%	18%	53%	
Fall 2010	0.1 - 2.9 Units	20%	80%					
	3.0 - 5.9 Units	27%	2%	71%				
	6.0 - 8.9 Units	20%	2%	21%	58%			
	9.0 - 11.9 Units	16%	2%	14%	21%	48%		
	12.0 + Units	8%	1%	8%	12%	18%	52%	
% Change Fall 06-10		--	26%	-8%	14%	28%	21%	
College Average Fall 06-10		--	79%	72%	56%	48%	52%	

Source: SDCCD Information System

Note: Percent change was based on counts.

Section II
Term Persistence Rates

SDCCD Section II: Term Persistence Rates

This section of the Fact Book contains information on first-time to college student term persistence rates. For purposes of this report, term persistence rate is the measure of first-time to college students who were enrolled in a fall term as of census (eliminating drops and never attends prior to census) and who completed the term with a grade of A, B, C, P (Pass), D, F, I, NP (Not-Pass), or RD (Report Delayed), then were enrolled as of census in the subsequent spring term and received a grade notation for that term. Note that SDSU and UCSD students and academy classes are excluded from analyses. The information in this section includes five years of data and is reported as follows:

- 1) Overall
- 2) Gender
- 3) Ethnicity
- 4) Age

SDCCD Section II: Term Persistence Rates

Overall Term Persistence: The average term persistence rate of first-time students at the colleges was 70% between the Fall 2006 and Fall 2010 cohorts. Persistence rates peaked to a high of 76% in the Fall 2010 cohort and dipped to a low of 66% in the Fall 2006 and Fall 2007 cohorts. Overall, term persistence rates increased 10%, from 66% in the Fall 2006 cohort to 76% in Fall 2010 cohort.

Figure 2.1. All Colleges First-Time Student Overall Term Persistence

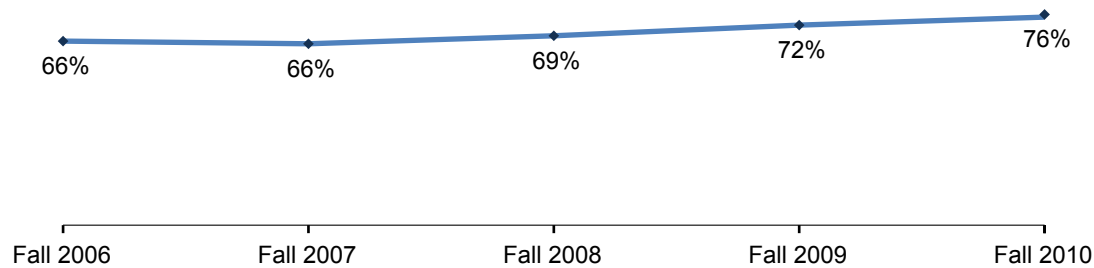


Table 2.1. All Colleges First-Time Student Overall Term Persistence

Cohort	Fall	Spring	Persistence
Fall 2006	3,477	2,302	66%
Fall 2007	3,830	2,527	66%
Fall 2008	3,845	2,636	69%
Fall 2009	3,963	2,863	72%
Fall 2010	4,535	3,436	76%
Average			70%

Source: SDCCD Information System

Note 1: SDSU and UCSD students are excluded.

Note 2: Academy courses are excluded.

SDCCD Section II: Term Persistence Rates

Term Persistence by Gender: On average, term persistence rates of female students (73%) were higher than their male student counterpart (68%) between the Fall 2006 and Fall 2010 cohorts. Persistence rates increased for both female and male students between the Fall 2006 and Fall 2010 cohorts (9% & 10%, respectively).

Figure 2.2. All Colleges First-Time Student Term Persistence by Gender

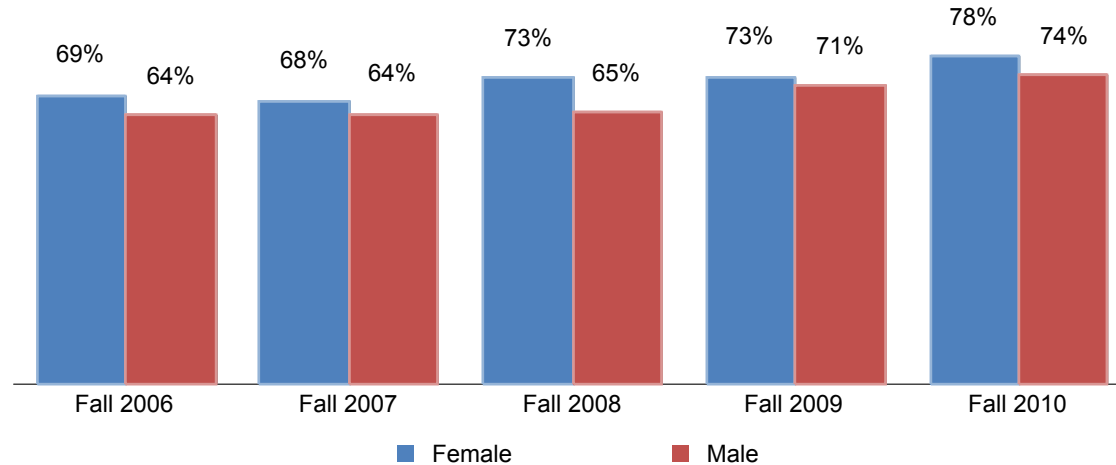


Table 2.2. All Colleges First-Time Student Term Persistence by Gender

Cohort	Female			Male		
	Fall	Spring	Persistence	Fall	Spring	Persistence
Fall 2006	1,616	1,112	69%	1,861	1,190	64%
Fall 2007	1,786	1,209	68%	2,041	1,316	64%
Fall 2008	1,737	1,272	73%	2,107	1,364	65%
Fall 2009	1,833	1,347	73%	2,130	1,516	71%
Fall 2010	2,074	1,624	78%	2,461	1,812	74%
Average			73%			68%

Source: SDCCD Information System

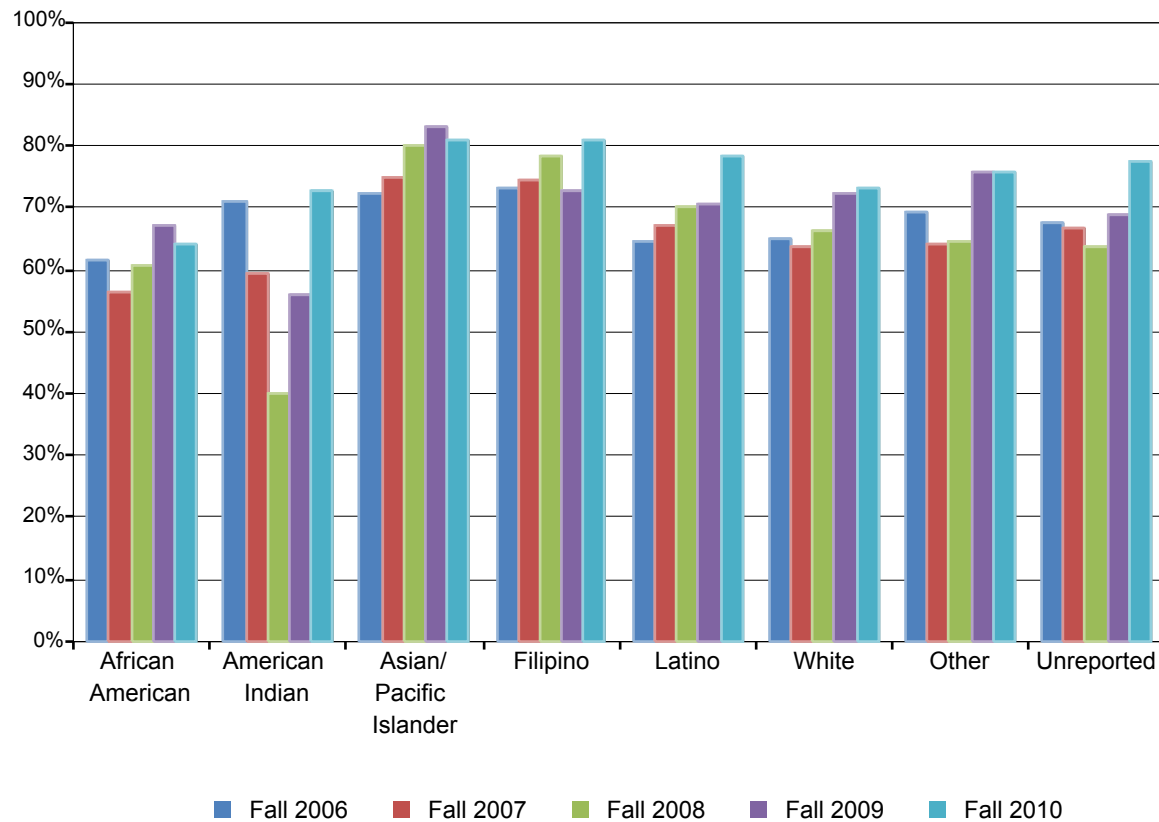
Note 1: SDSU and UCSD students are excluded.

Note 2: Academy courses are excluded.

SDCCD Section II: Term Persistence Rates

Term Persistence by Ethnicity: The ethnic groups with the highest term persistence rates, on average, were Asian/Pacific Islander students (78%), Filipino students (76%), and both students categorized as 'Other' ethnicities and Latino students (71% each). Persistence rates peaked to a high of 83% for Asian/Pacific Islander students in the Fall 2009 cohort, as well as Filipino students (81%) in the Fall 2010 cohort. Persistence rates of Latino students increased 13% between the Fall 2006 and Fall 2010 cohorts.

Figure 2.3. All Colleges First-Time Student Term Persistence by Ethnicity



SDCCD Section II: Term Persistence Rates

Table 2.3. All Colleges First-Time Student Term Persistence by Ethnicity

Cohort	African American			American Indian			Asian/Pacific Islander			Filipino		
	Fall	Spring	Persistence	Fall	Spring	Persistence	Fall	Spring	Persistence	Fall	Spring	Persistence
Fall 2006	318	195	61%	31	22	71%	380	275	72%	194	142	73%
Fall 2007	364	205	56%	42	25	60%	425	319	75%	214	159	74%
Fall 2008	357	216	61%	35	14	40%	399	319	80%	218	171	78%
Fall 2009	419	282	67%	25	14	56%	423	351	83%	214	156	73%
Fall 2010	405	259	64%	22	16	73%	392	318	81%	225	182	81%
Average			62%			59%			78%			76%

Cohort	Latino			White			Other			Unreported		
	Fall	Spring	Persistence	Fall	Spring	Persistence	Fall	Spring	Persistence	Fall	Spring	Persistence
Fall 2006	930	601	65%	1,266	823	65%	120	83	69%	238	161	68%
Fall 2007	1,115	748	67%	1,315	838	64%	136	87	64%	219	146	67%
Fall 2008	1,135	796	70%	1,347	894	66%	104	67	64%	250	159	64%
Fall 2009	1,331	939	71%	1,190	862	72%	153	116	76%	208	143	69%
Fall 2010	1,881	1,473	78%	1,281	938	73%	271	205	76%	58	45	78%
Average			71%			68%			71%			67%

Source: SDCCD Information System

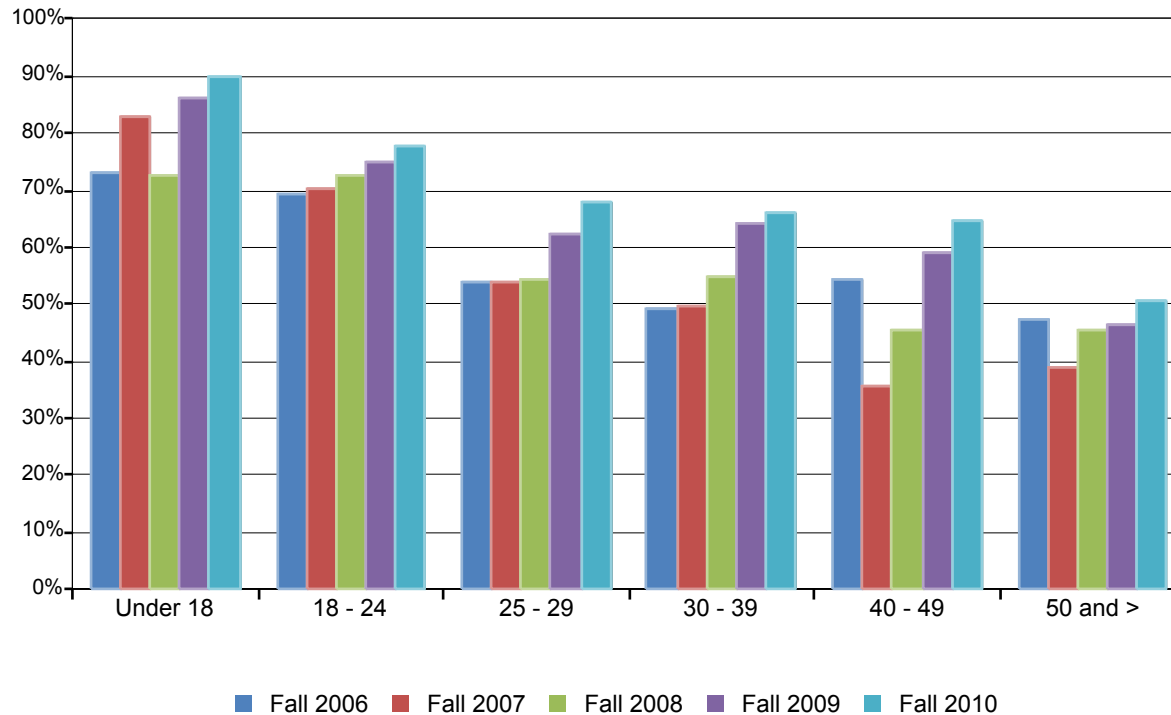
Note 1: SDSU and UCSD students are excluded.

Note 2: Academy courses are excluded.

SDCCD Section II: Term Persistence Rates

Term Persistence by Age: A general trend among the Fall 2006 to the Fall 2010 cohorts showed as age increased, term persistence rates decreased. Persistence rates for students ages 18-24 increased 9% between the Fall 2006 and Fall 2010 cohorts. Persistence rates for students between ages 30 and 39 years old increased 17% between the Fall 2006 and Fall 2010 cohorts.

Figure 2.4. All Colleges First-Time Student Term Persistence by Age



SDCCD Section II: Term Persistence Rates

Table 2.4. All Colleges First-Time Student Term Persistence by Age

Cohort	Under 18			18 - 24			25 - 29		
	Fall	Spring	Persistence	Fall	Spring	Persistence	Fall	Spring	Persistence
Fall 2006	48	35	73%	2,813	1,949	69%	250	134	54%
Fall 2007	41	34	83%	3,060	2,144	70%	299	161	54%
Fall 2008	51	37	73%	3,058	2,215	72%	303	165	54%
Fall 2009	64	55	86%	3,094	2,320	75%	350	218	62%
Fall 2010	69	62	90%	3,741	2,900	78%	317	216	68%
Average			82%			73%			59%

Cohort	30 - 39			40 - 49			50 and >		
	Fall	Spring	Persistence	Fall	Spring	Persistence	Fall	Spring	Persistence
Fall 2006	208	102	49%	105	57	54%	53	25	47%
Fall 2007	229	114	50%	129	46	36%	72	28	39%
Fall 2008	239	131	55%	119	54	45%	75	34	45%
Fall 2009	255	163	64%	114	67	59%	86	40	47%
Fall 2010	240	158	66%	105	68	65%	63	32	51%
Average			57%			51%			46%

Source: SDCCD Information System

Note 1: SDSU and UCSD students are excluded.

Note 2: Academy courses are excluded.

**Section III
Student Outcomes**

SDCCD Section III: Student Outcomes

This section of the Fact Book contains information on various student outcomes which may be considered indirect assessments of student learning. The outcomes included in this section are: 1) Annual Successful Course Completion Rates, 2) Annual Retention Rates, 3) Annual GPA, 4) Annual Awards Conferred, and 5) Annual Transfer Volume. All of the information in this section includes five years of data by gender, age, and ethnicity. The following describes in detail each of the outcomes listed.

- 1) Successful Course Completion Rates. The first outcome reported in this section is successful course completion, or student success rate. For purposes of this report, the success rate is the percentage of students who completed a course with a grade of A, B, C, or P out of total enrollments as of census. *Note: Tutoring, non-credit, and cancelled classes are excluded.*
- 2) Retention Rates. The second outcome reported in this section is retention rate. For purposes of this report, the retention rate is the percentage of students who completed a course with a grade of A, B, C, D, F, P, NP, I, or RD out of total enrollments as of census. *Note: Tutoring and cancelled classes are excluded.*
- 3) Annual GPA. The third outcome reported in this section is annual GPA. For purposes of this report, the annual GPA is the cumulative term grade point average of all courses taken for a grade in one academic year.
- 4) Annual Awards Conferred. The fourth outcome reported in this section is the annual awards conferred. For purposes of this report, the annual awards conferred are the total number of associate degrees and certificates awarded in a single academic year (summer, fall, and spring). *Note: Annual awards conferred that are reported in this Fact Book are considered preliminary data. Please see the upcoming Awards Conferred Supplement report for final annual awards conferred numbers.*
- 5) Annual Transfer Volume. The last outcome reported in this section is the number of students who transfer annually. For the purposes of this report, the annual transfer volume represents the total number of students who transferred to a 4-year institution and were enrolled at an SDCCD college at any time within three semesters prior to transferring (including stop outs). The student must also have completed 12 or more transferrable units within six years prior to transferring to a 4-year institution. Please note, in order to more accurately report on transfer patterns, the following change has been made: The timeframe to complete 12 or more transferrable units increased from four years to six years. *Note: Transfer volume that is reported in this Fact Book is considered preliminary data. Please see the upcoming Spring 2012 SDCCD Transfer Report: A Longitudinal Perspective for final transfer volume numbers.*

SDCCD Section III: Student Outcomes (Success Rates)

Overall Success Rates: The annual success rates of all colleges in the district remained relatively stable between 2006/07 and 2010/11, with an average of 67%.

Figure 3.1. All Colleges Overall Success Rates

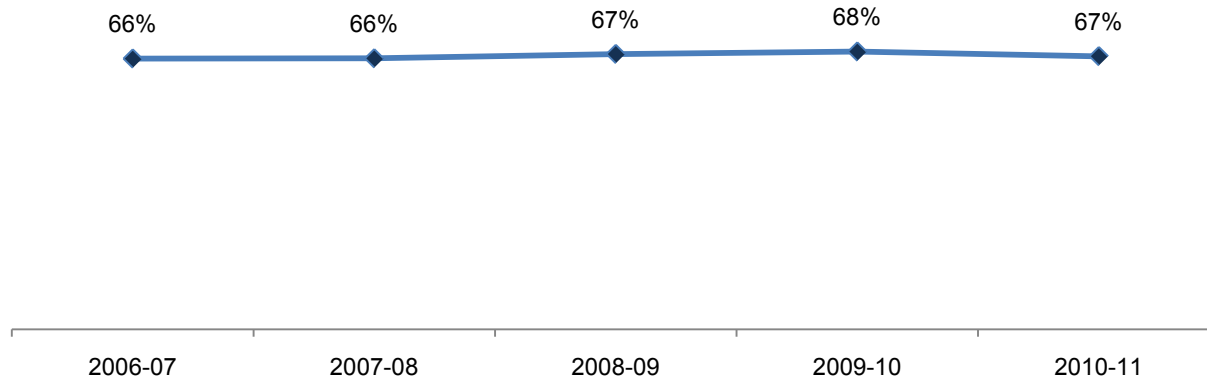


Table 3.1. All Colleges Overall Success Rates

	2006-07	2007-08	2008-09	2009-10	2010-11	% Change 06/07-10/11	All Colleges Average 06/07-10/11
Average	66%	66%	67%	68%	67%	1%	67%

Source: SDCCD Information System

Note: Tutoring, non-credit, and cancelled classes are excluded.

SDCCD Section III: Student Outcomes (Success Rates)

Success Rates by Gender: The average success rate of female students (67%) was comparable to the average success rate of their male student counterpart (66%) between 2006/07 and 2010/11. The average success rate of female students was the same as the average success rate of the general student population for all colleges in the district (67%), while the average success rate of male students was comparable to the same average.

Figure 3.2. All Colleges Success Rates by Gender

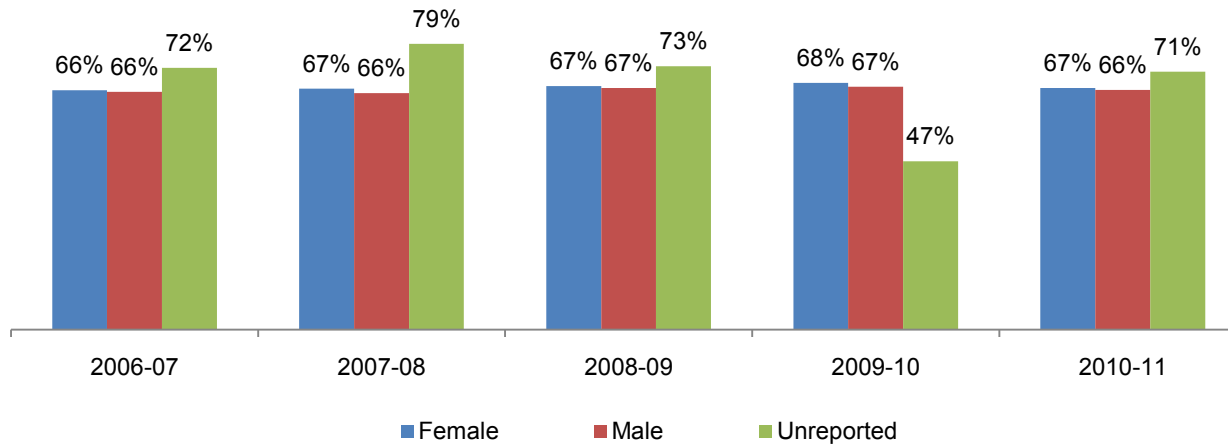


Table 3.2. All Colleges Success Rates by Gender

	2006-07	2007-08	2008-09	2009-10	2010-11	% Change 06/07-10/11	All Colleges Average 06/07-10/11
Female	66%	67%	67%	68%	67%	1%	67%
Male	66%	66%	67%	67%	66%	1%	66%
Unreported	72%	79%	73%	47%	71%	-1%	74%
Average	66%	66%	67%	68%	67%	1%	67%

Source: SDCCD Information System

Note: Tutoring, non-credit, and cancelled classes are excluded.

SDCCD Section III: Student Outcomes (Success Rates)

Success Rates by Ethnicity: On average, the ethnic groups with the highest success rates were both White students and Asian/Pacific Islander students (71% & 72%, respectively), followed by Filipino students (67%) between 2006/07 and 2010/11. The average success rates of African American, American Indian, Latino and students categorized as 'Other' ethnicities were lower than the average success rate of the general student population of all colleges in the district (67%). The average success rates of White, Asian/Pacific Islander, and Filipino students exceeded or were comparable to the same average.

Figure 3.3. All Colleges Success Rates by Ethnicity

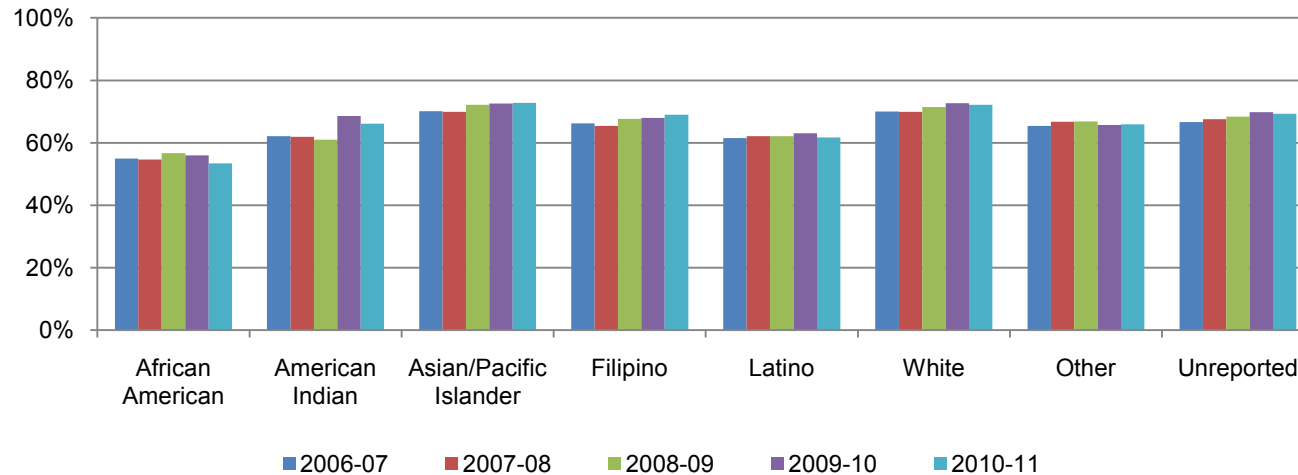


Table 3.3. All Colleges Success Rates by Ethnicity

	2006-07	2007-08	2008-09	2009-10	2010-11	% Change 06/07-10/11	All Colleges Average 06/07-10/11
African American	55%	55%	57%	56%	53%	-1%	55%
American Indian	62%	62%	61%	69%	66%	4%	64%
Asian/Pacific Islander	70%	70%	72%	73%	73%	3%	72%
Filipino	66%	65%	68%	68%	69%	3%	67%
Latino	61%	62%	62%	63%	62%	0%	62%
White	70%	70%	71%	73%	72%	2%	71%
Other	65%	67%	67%	66%	66%	0%	66%
Unreported	67%	68%	68%	70%	69%	3%	68%
Average	66%	66%	67%	68%	67%	1%	67%

Source: SDCCD Information System

Note: Tutoring, non-credit, and cancelled classes are excluded.

SDCCD Section III: Student Outcomes (Success Rates)

Success Rates by Age: With the exception of students who were under age 18, a general trend showed, on average, as age increased so did success rates. Students who were below 18 years old had the highest success rate (85%) on average. With the exception of students ages 18-24, the average success rates of all other age groups were higher compared to the average success rates of the general student population for all colleges in the district (67%).

Figure 3.4. All Colleges Success Rates by Age

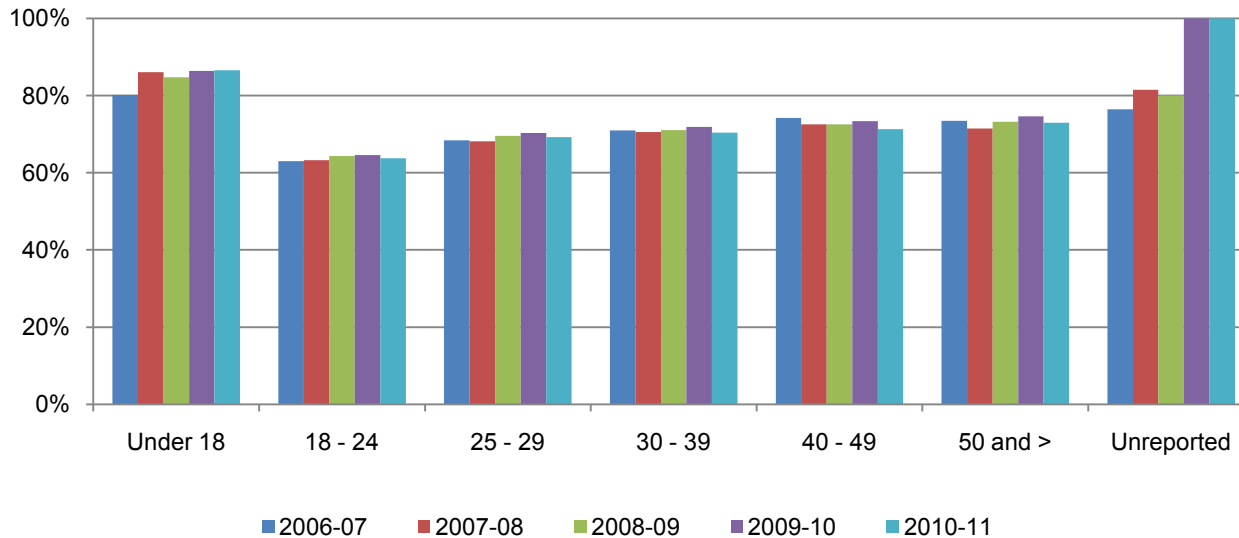


Table 3.4. All Colleges Success Rates by Age

	2006-07	2007-08	2008-09	2009-10	2010-11	% Change 06/07-10/11	All Colleges Average 06/07-10/11
Under 18	80%	86%	85%	86%	87%	6%	85%
18 - 24	63%	63%	64%	65%	64%	1%	64%
25 - 29	68%	68%	70%	70%	69%	1%	69%
30 - 39	71%	71%	71%	72%	70%	-1%	71%
40 - 49	74%	73%	73%	73%	71%	-3%	73%
50 and >	73%	71%	73%	75%	73%	0%	73%
Unreported	76%	81%	80%	100%	100%	24%	79%
Average	66%	66%	67%	68%	67%	1%	67%

Source: SDCCD Information System

Note: Tutoring, non-credit, and cancelled classes are excluded.

SDCCD Section III: Student Outcomes (Retention Rates)

Overall Retention Rates: The annual retention rates of all colleges in the district displayed a 3% increase, from 82% in 2006/07 to 85% in 2010/11, with an average of 83%.

Figure 3.5. All Colleges Overall Retention Rates

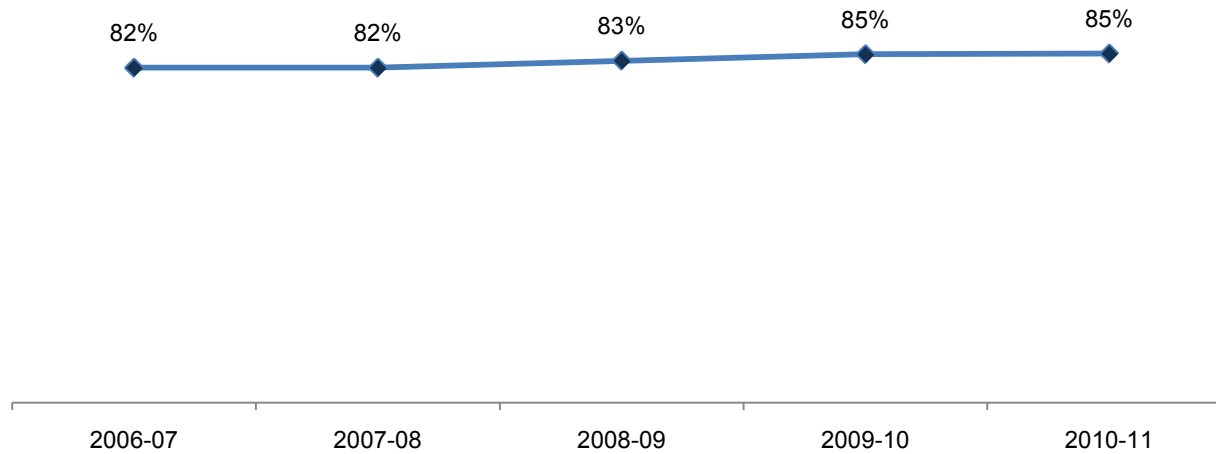


Table 3.5. All Colleges Overall Retention Rates

	2006-07	2007-08	2008-09	2009-10	2010-11	% Change 06/07-10/11	All Colleges Average 06/07-10/11
Average	82%	82%	83%	85%	85%	3%	83%

Source: SDCCD Information System

Note: Tutoring and cancelled classes are excluded.

SDCCD Section III: Student Outcomes (Retention Rates)

Retention Rates by Gender: The average retention rate of female students (83%) was the same as the average retention rate of their male student counterpart (83%) between 2006/07 and 2010/11. The average retention rates of male and female student populations of all colleges in the district were comparable to the average retention rate of the general student population for all colleges in the district (83%).

Figure 3.6. All Colleges Retention Rates by Gender



Table 3.6. All Colleges Retention Rates by Gender

	2006-07	2007-08	2008-09	2009-10	2010-11	% Change 06/07-10/11	All Colleges Average 06/07-10/11
Female	81%	81%	83%	85%	85%	4%	83%
Male	82%	82%	83%	85%	85%	3%	83%
Unreported	89%	89%	92%	87%	79%	-10%	89%
Average	82%	82%	83%	85%	85%	3%	83%

Source: SDCCD Information System

Note: Tutoring and cancelled classes are excluded.

SDCCD Section III: Student Outcomes (Retention Rates)

Retention Rates by Ethnicity: Between 2006/07 and 2010/11, the ethnic groups with the highest retention rates, on average, were Asian/Pacific Islander students (85%), White students (84%), and Filipino students (84%). The average retention rates of African American, American Indian, and Latino students, and students categorized as 'Other' ethnicities were lower or comparable to the average retention rate of the general student population for all colleges in the district (83%). All groups showed an increase in retention rates between 2006/07 and 2010/11.

Figure 3.7. All Colleges Retention Rates by Ethnicity

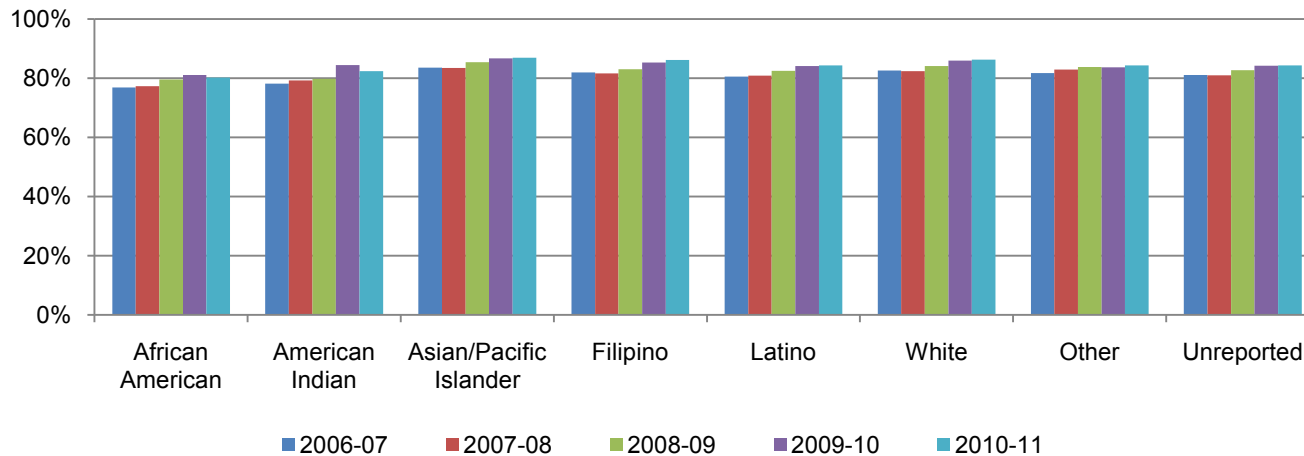


Table 3.7. All Colleges Retention Rates by Ethnicity

	2006-07	2007-08	2008-09	2009-10	2010-11	% Change 06/07-10/11	All Colleges Average 06/07-10/11
African American	77%	77%	80%	81%	80%	3%	79%
American Indian	78%	79%	80%	84%	82%	4%	81%
Asian/Pacific Islander	84%	83%	85%	87%	87%	3%	85%
Filipino	82%	82%	83%	85%	86%	4%	84%
Latino	80%	81%	82%	84%	84%	4%	83%
White	83%	82%	84%	86%	86%	4%	84%
Other	82%	83%	84%	84%	84%	3%	83%
Unreported	81%	81%	83%	84%	84%	3%	83%
Average	82%	82%	83%	85%	85%	3%	83%

Source: SDCCD Information System

Note: Tutoring and cancelled classes are excluded.

SDCCD Section III: Student Outcomes (Retention Rates)

Retention Rates by Age: Between 2006/07 and 2010/11, the age groups with the highest retention rates, on average, were students who were below 18 years old (94%), students between ages 40 and 49 years old (84%), and students 50 years and older (84%). The average retention rates of students between ages 18 and 39 years old were comparable to the average retention rate of the general student population for all colleges in the district (83%). The average retention rates of students under age 18 years old, students between ages 40 and 49 years old, and students 50 years and older exceeded the same average.

Figure 3.8. All Colleges Retention Rates by Age

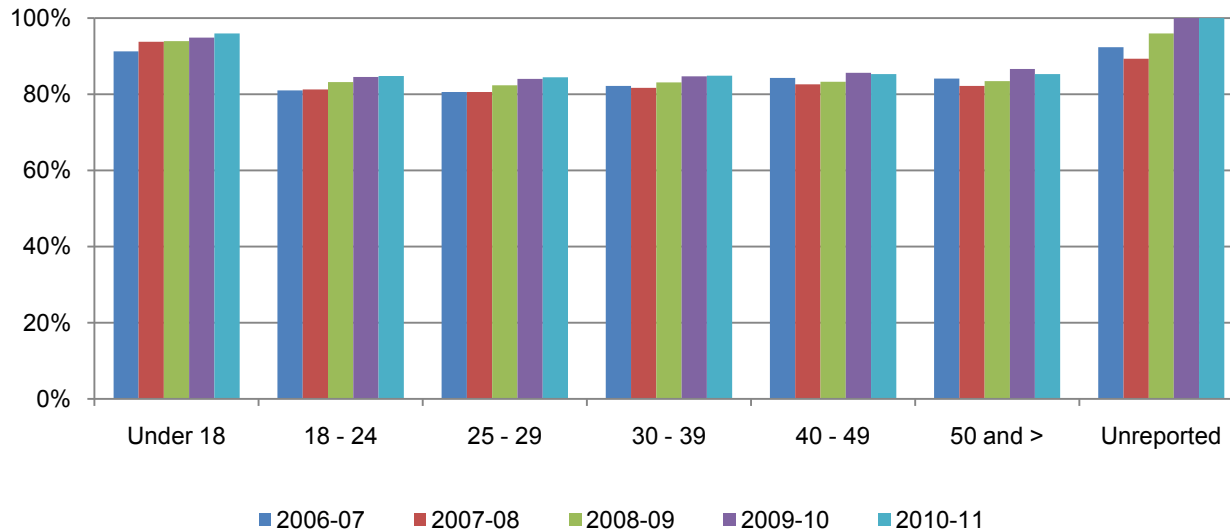


Table 3.8. All Colleges Retention Rates by Age

	2006-07	2007-08	2008-09	2009-10	2010-11	% Change 06/07-10/11	All Colleges Average 06/07-10/11
Under 18	91%	94%	94%	95%	96%	5%	94%
18 - 24	81%	81%	83%	85%	85%	4%	83%
25 - 29	81%	81%	82%	84%	84%	4%	83%
30 - 39	82%	82%	83%	85%	85%	3%	83%
40 - 49	84%	83%	83%	86%	85%	1%	84%
50 and >	84%	82%	83%	87%	85%	1%	84%
Unreported	92%	89%	96%	100%	100%	8%	92%
Average	82%	82%	83%	85%	85%	3%	83%

Source: SDCCD Information System

Note: Tutoring and cancelled classes are excluded.

SDCCD Section III: Student Outcomes (Annual GPA)

Overall Annual GPA: The annual GPAs of all colleges in the district remained relatively stable between 2006/07 and 2010/11, with an average of 2.66.

Figure 3.9. All Colleges Overall Annual GPA

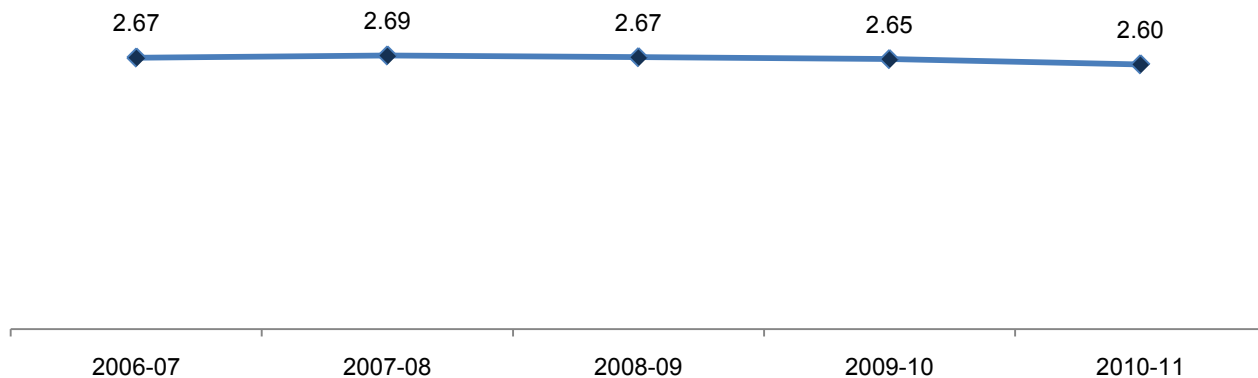


Table 3.9. All Colleges Overall Annual GPA

	2006-07	2007-08	2008-09	2009-10	2010-11	All Colleges Average 06/07-10/11
Average	2.67	2.69	2.67	2.65	2.60	2.66

Source: SDCCD Information System

SDCCD Section III: Student Outcomes (Annual GPA)

Annual GPA by Gender: Between 2006/07 and 2010/11, female students, on average, had slightly higher GPAs than their male student counterpart (2.69 & 2.62, respectively). The average annual GPA of female students was higher than the average annual GPA of the general student population for all colleges in the district (2.66), while the average annual GPA of male students was slightly lower than same average.

Figure 3.10. All Colleges Annual GPA by Gender

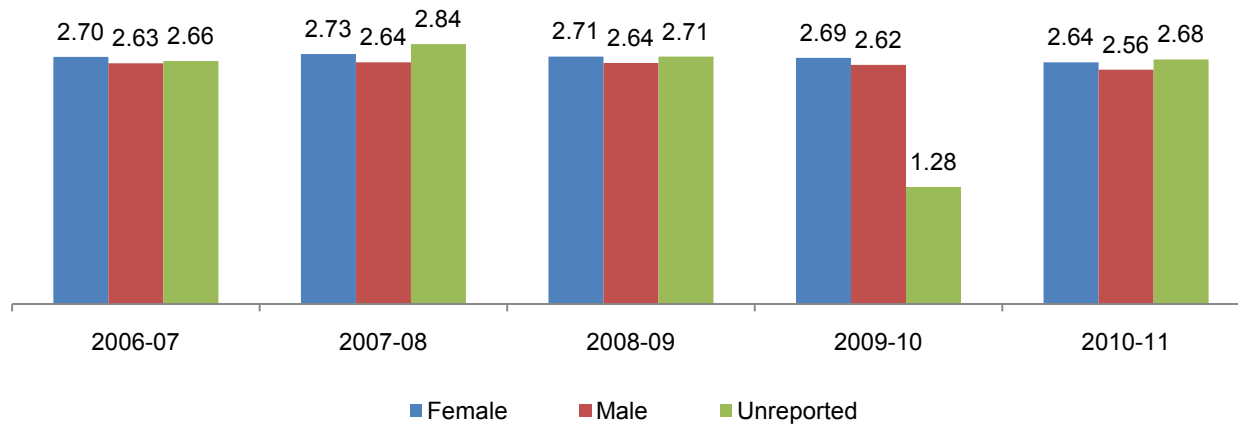


Table 3.10. All Colleges Annual GPA by Gender

	2006-07	2007-08	2008-09	2009-10	2010-11	All Colleges Average 06/07-10/11
Female	2.70	2.73	2.71	2.69	2.64	2.69
Male	2.63	2.64	2.64	2.62	2.56	2.62
Unreported	2.66	2.84	2.71	1.28	2.68	2.68
Average	2.67	2.69	2.67	2.65	2.60	2.66

Source: SDCCD Information System

SDCCD Section III: Student Outcomes (Annual GPA)

Annual GPA by Ethnicity: Both White students (2.86) and Asian/Pacific Islander students (2.81) had the highest GPAs, on average, between 2006/07 and 2010/11. The average annual GPAs of African American, American Indian, Filipino, Latino, and students categorized as 'Other' ethnicities were lower than the average annual GPAs of the general student population of all colleges in the district (2.66), while the average annual GPAs of Asian/Pacific Islander and White students exceeded the same average.

Figure 3.11. All Colleges Annual GPA by Ethnicity

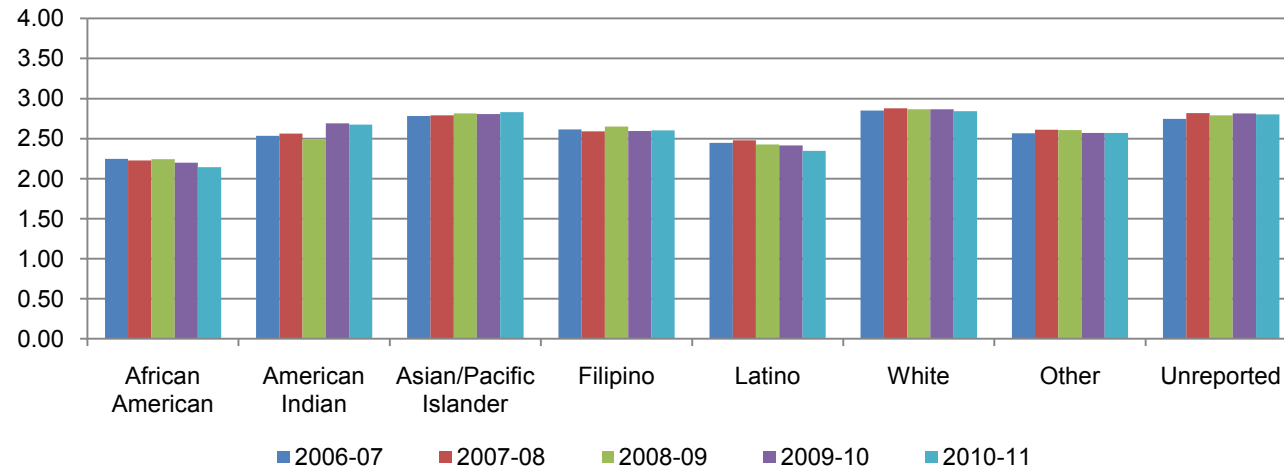


Table 3.11. All Colleges Annual GPA by Ethnicity

	2006-07	2007-08	2008-09	2009-10	2010-11	All Colleges Average 06/07-10/11
African American	2.25	2.23	2.24	2.20	2.14	2.21
American Indian	2.54	2.56	2.48	2.69	2.67	2.59
Asian/Pacific Islander	2.78	2.79	2.81	2.81	2.83	2.81
Filipino	2.62	2.59	2.65	2.60	2.60	2.61
Latino	2.44	2.48	2.43	2.42	2.35	2.41
White	2.85	2.88	2.87	2.87	2.84	2.86
Other	2.57	2.61	2.61	2.57	2.57	2.58
Unreported	2.75	2.82	2.79	2.81	2.80	2.79
Average	2.67	2.69	2.67	2.65	2.60	2.66

Source: SDCCD Information System

SDCCD Section III: Student Outcomes (Annual GPA)

Annual GPA by Age: With the exception of students who were under age 18, a general trend between 2006/07 and 2010/11 showed, on average, as age increased so did GPA. The average annual GPA of students who were between ages 18 and 24 (2.47) was lower than the average annual GPA of the general student population of all colleges in the district (2.66). The average annual GPAs of all other age groups exceeded the same average.

Figure 3.12. All Colleges Annual GPA by Age

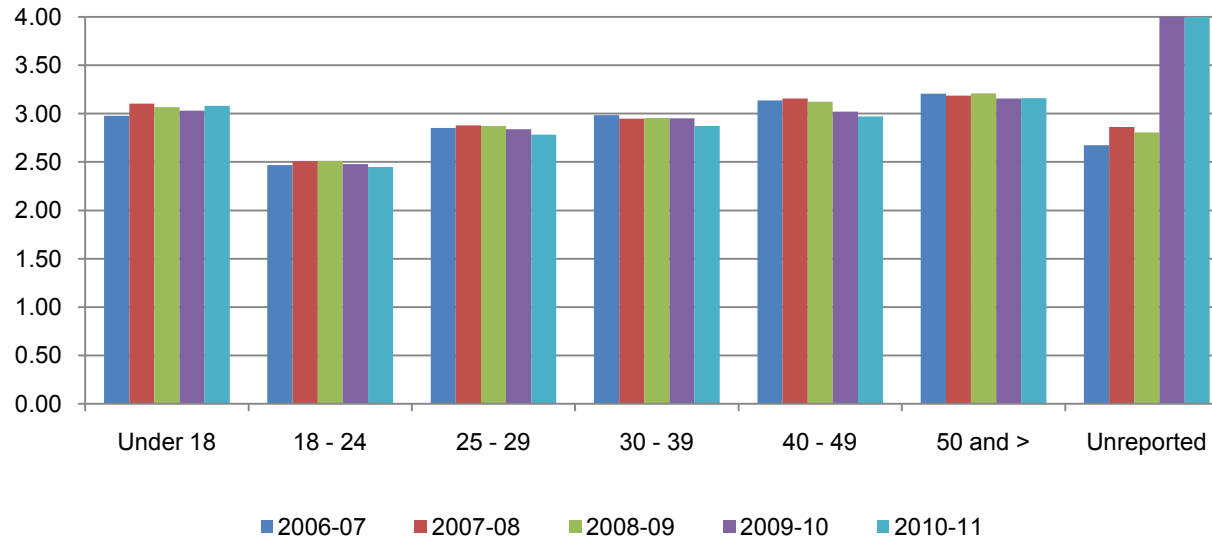


Table 3.12. All Colleges Annual GPA by Age

	2006-07	2007-08	2008-09	2009-10	2010-11	All Colleges Average 06/07-10/11
Under 18	2.89	3.07	2.95	2.99	3.05	2.99
18 - 24	2.48	2.51	2.49	2.46	2.42	2.47
25 - 29	2.89	2.90	2.88	2.85	2.79	2.85
30 - 39	2.99	2.99	2.96	2.94	2.87	2.94
40 - 49	3.07	3.09	3.04	3.01	2.94	3.03
50 and >	3.09	3.07	3.11	3.10	3.05	3.08
Unreported	2.70	3.01	3.02	4.00	4.00	2.83
Average	2.67	2.69	2.67	2.65	2.60	2.66

Source: SDCCD Information System

SDCCD Section III: Student Outcomes (Annual Awards Conferred)

Annual Awards Conferred: On average, 46% of the total awards conferred districtwide were associate degrees. Overall, there was an 8% decrease in the number of associate degrees awarded between 2006/07 and 2010/11. In contrast, certificates requiring 30-59 units increased 44%, from 397 in 2006/07 to 571 in 2010/2011. Furthermore, Continuing Education certificates of completion more than doubled (144%), from 448 in 2006/07 to 1,094 in 2010/21.

Figure 3.13. SDCCD Overall Annual Awards Conferred

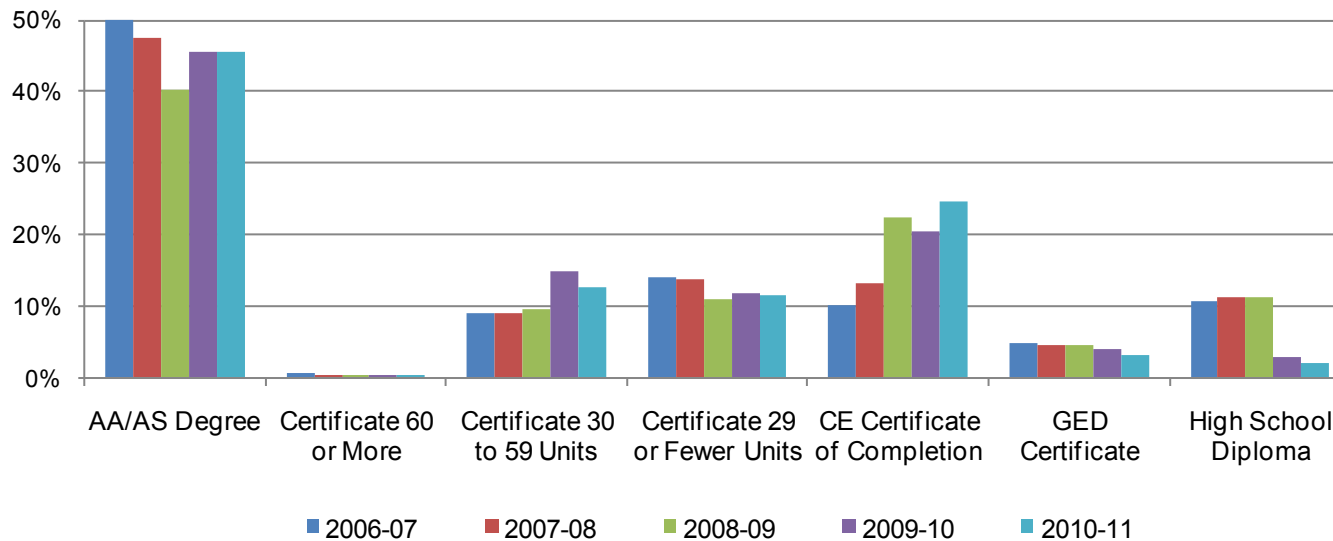


Table 3.13. SDCCD Overall Annual Awards Conferred

	2006-07		2007-08		2008-09		2009-10		2010-11		% Change 06/07-10/11	Districtwide Average 06/07-10/11
AA/AS Degree	2,209	50%	2,070	48%	2,124	40%	2,081	45%	2,034	46%	-8%	46%
Certificate 60 or More	31	1%	22	1%	24	0%	11	0%	4	0%	-87%	0%
Certificate 30 to 59 Units	397	9%	398	9%	511	10%	681	15%	571	13%	44%	11%
Certificate 29 or Fewer Units	616	14%	595	14%	586	11%	540	12%	517	12%	-16%	12%
CE Certificate of Completion	448	10%	581	13%	1,177	22%	942	21%	1,094	25%	144%	18%
GED Certificate	210	5%	196	5%	248	5%	184	4%	146	3%	-30%	4%
High School Diploma	472	11%	489	11%	588	11%	137	3%	93	2%	-80%	8%
Total	4,383	100%	4,351	100%	5,258	100%	4,576	100%	4,459	100%	2%	100%

Source: SDCCD Information System

Note: In 2009/2010, reporting procedures for high school diplomas were revised to correspond with MIS reporting requirements.

SDCCD Section III: Student Outcomes (Annual Awards Conferred)

Annual Awards Conferred by Gender: Of the total awards conferred districtwide, female students (57%) received more associate degrees, on average, than their male student counterpart (43%) between 2006/07 and 2010/11. Both male and female students displayed a decreased trend (5% & 10%, respectively) for the number of associate degrees awarded within all colleges in the district between 2006/07 and 2010/11. From 2006/07 to 2010/11, of the total awards conferred districtwide, male students (52%) received more Continuing Education certificates of completion, on average, than their female student counterpart (47%).

Figure 3.14.1. SDCCD Annual AA/AS Degrees by Gender

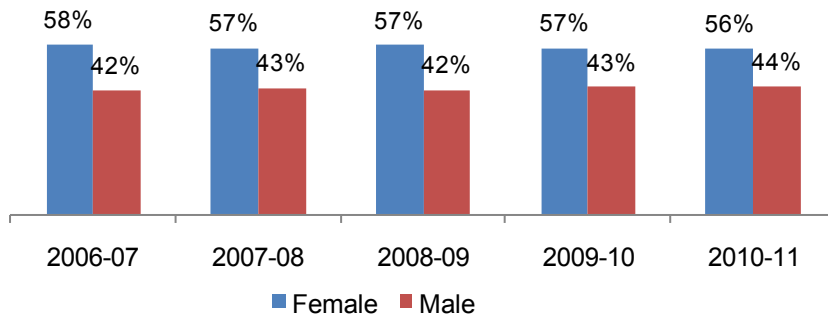


Figure 3.14.2. SDCCD Annual Certificates 60 or More Units by Gender

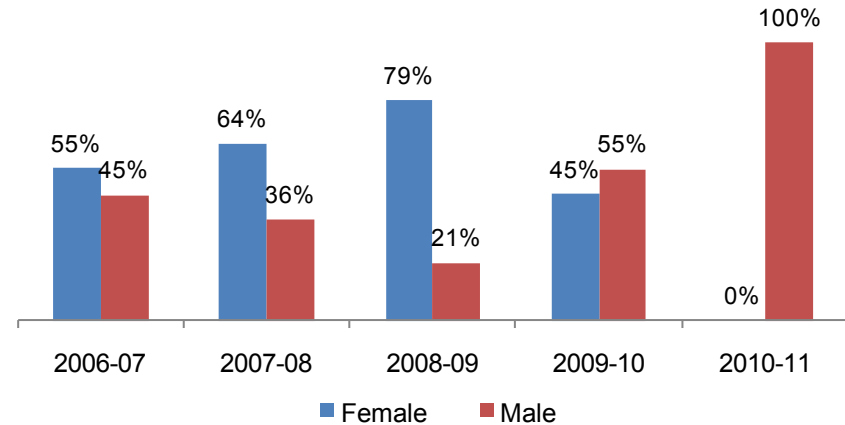


Figure 3.14.3. SDCCD Annual Certificates 30 to 59 Units by Gender

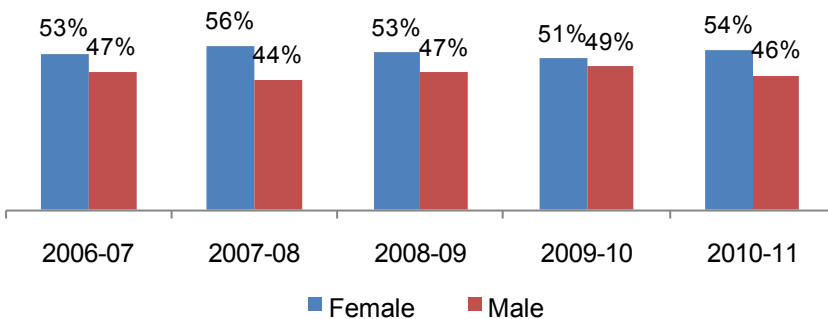
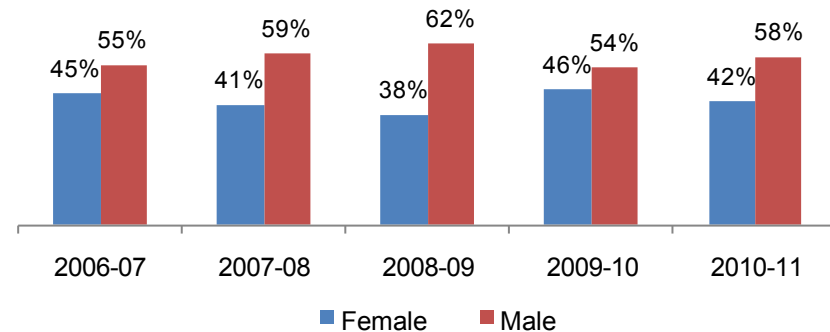


Figure 3.14.4. SDCCD Annual Certificates 29 or Fewer Units by Gender



SDCCD Section III: Student Outcomes (Annual Awards Conferred)

Figure 3.14.5. SDCCD Annual CE Certificates of Completion

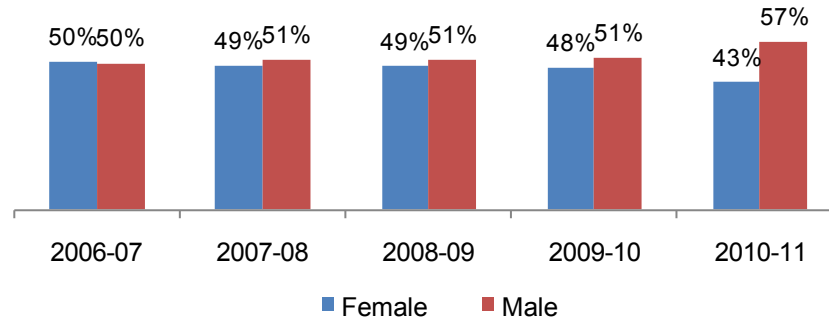


Figure 3.14.6. SDCCD Annual GED Certificates

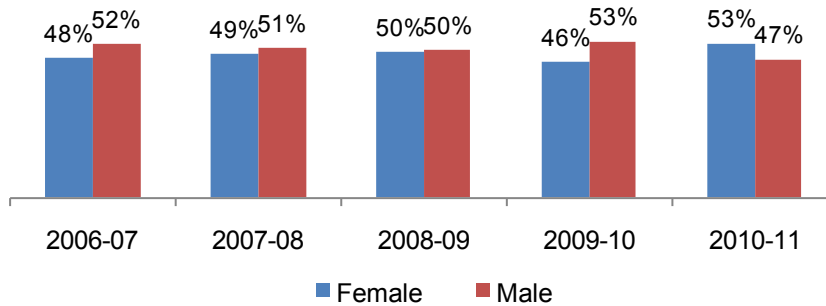
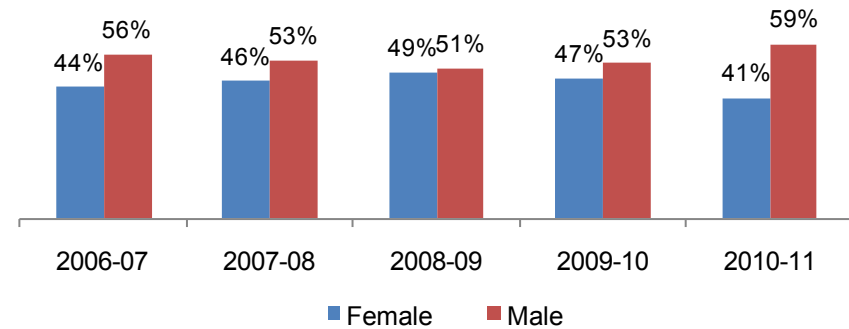


Figure 3.14.7. SDCCD Annual High School Diplomas



SDCCD Section III: Student Outcomes (Annual Awards Conferred)

Table 3.14. SDCCD Annual Awards Conferred by Gender

		2006-07		2007-08		2008-09		2009-10		2010-11		% Change 06/07-10/11	Districtwide Average 06/07-10/11
AA/AS Degree	Female	1,274	58%	1,175	57%	1,221	57%	1,181	57%	1,149	56%	-10%	57%
	Male	934	42%	895	43%	902	42%	900	43%	885	44%	-5%	43%
	Unreported	1	0%	0	0%	1	0%	0	0%	0	0%	-100%	0%
	Total	2,209	100%	2,070	100%	2,124	100%	2,081	100%	2,034	100%	-8%	100%
Certificate 60 or More	Female	17	55%	14	64%	19	79%	5	45%	0	0%	-100%	60%
	Male	14	45%	8	36%	5	21%	6	55%	4	100%	-71%	40%
	Unreported	0	0%	0	0%	0	0%	0	0%	0	0%	---	0%
	Total	31	100%	22	100%	24	100%	11	100%	4	100%	-87%	100%
Certificate 30 to 59 Units	Female	211	53%	222	56%	272	53%	350	51%	310	54%	47%	53%
	Male	186	47%	176	44%	238	47%	331	49%	261	46%	40%	47%
	Unreported	0	0%	0	0%	1	0%	0	0%	0	0%	---	0%
	Total	397	100%	398	100%	511	100%	681	100%	571	100%	44%	100%
Certificate 29 or Fewer Units	Female	277	45%	245	41%	222	38%	250	46%	219	42%	-21%	43%
	Male	338	55%	350	59%	364	62%	290	54%	298	58%	-12%	57%
	Unreported	1	0%	0	0%	0	0%	0	0%	0	0%	-100%	0%
	Total	616	100%	595	100%	586	100%	540	100%	517	100%	-16%	100%
CE Certificate of Completion	Female	225	50%	284	49%	572	49%	455	48%	471	43%	109%	47%
	Male	223	50%	296	51%	600	51%	485	51%	622	57%	179%	52%
	Unreported	0	0%	1	0%	5	0%	2	0%	1	0%	---	0%
	Total	448	100%	581	100%	1,177	100%	942	100%	1,094	100%	144%	100%
GED Certificate	Female	100	48%	96	49%	123	50%	85	46%	77	53%	-23%	49%
	Male	110	52%	100	51%	125	50%	98	53%	69	47%	-37%	51%
	Unreported	0	0%	0	0%	0	0%	1	1%	0	0%	---	0%
	Total	210	100%	196	100%	248	100%	184	100%	146	100%	-30%	100%
High School Diploma	Female	210	44%	227	46%	290	49%	65	47%	38	41%	-82%	47%
	Male	262	56%	261	53%	298	51%	72	53%	55	59%	-79%	53%
	Unreported	0	0%	1	0%	0	0%	0	0%	0	0%	---	0%
	Total	472	100%	489	100%	588	100%	137	100%	93	100%	-80%	100%
Grand Total	4,383	100%	4,351	100%	5,258	100%	4,576	100%	4,459	100%	2%	100%	

Source: SDCCD Information System

Note: In 2009/2010, reporting procedures for high school diplomas were revised to correspond with MIS reporting requirements.

SDCCD Section III: Student Outcomes (Annual Awards Conferred)

Annual Awards Conferred by Ethnicity: With the exception of Latino students, the number of associate degrees conferred within all colleges in the district decreased for all ethnic groups between 2006/07 to 2010/11. With the exception of Filipino students, the number of certificates of completion conferred at Continuing Education increased for all ethnic groups between 2006/07 and 2010/11. From 2006/07 to 2010/11, White students consistently received the most awards, followed by Latino students, and then Asian/Pacific Islander students across all award categories within all colleges in the district. The pattern of data was slightly different for Continuing Education award categories. For Continuing Education award categories, Latino students generally received the most awards followed by White students. These trends reflect the fact that these three ethnicities (White, Latino & Asian/Pacific Islanders students) constitute the greatest proportions of the districtwide student headcount population.

Figure 3.15.1. SDCCD Annual AA/AS Degrees by Ethnicity

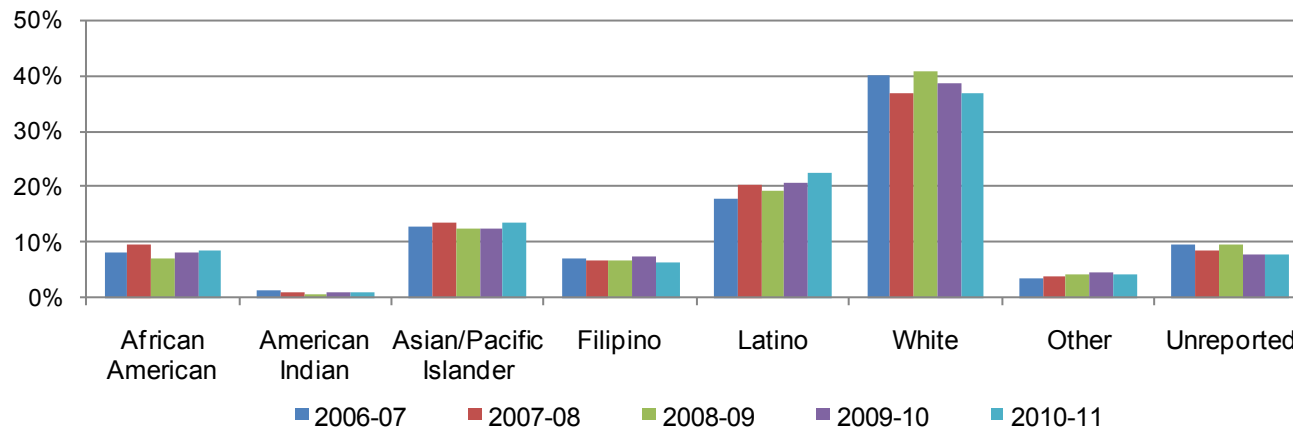
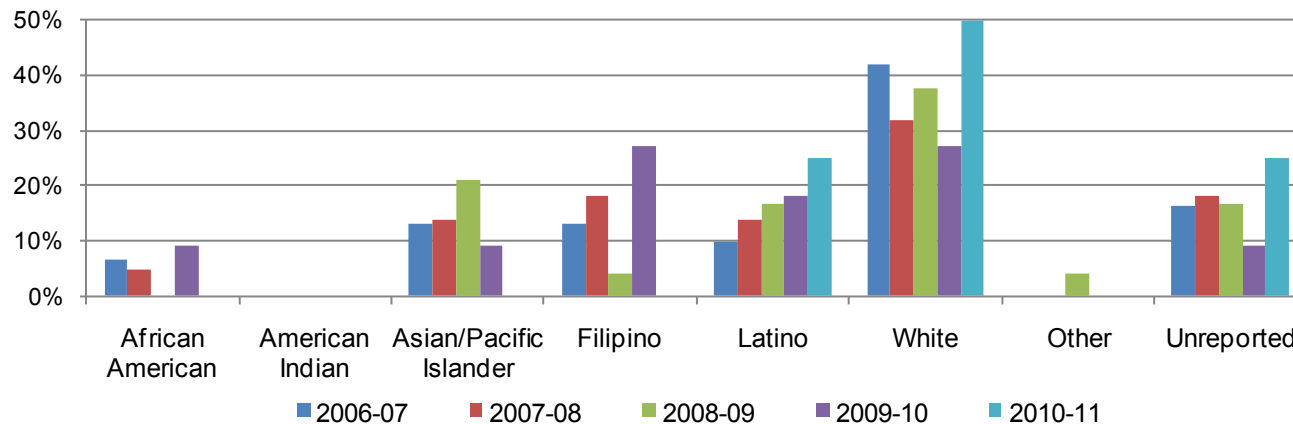


Figure 3.15.2. SDCCD Annual Certificates 60 or More Units by Ethnicity



SDCCD Section III: Student Outcomes (Annual Awards Conferred)

Figure 3.15.3. SDCCD Annual Certificates 30 to 59 Units by Ethnicity

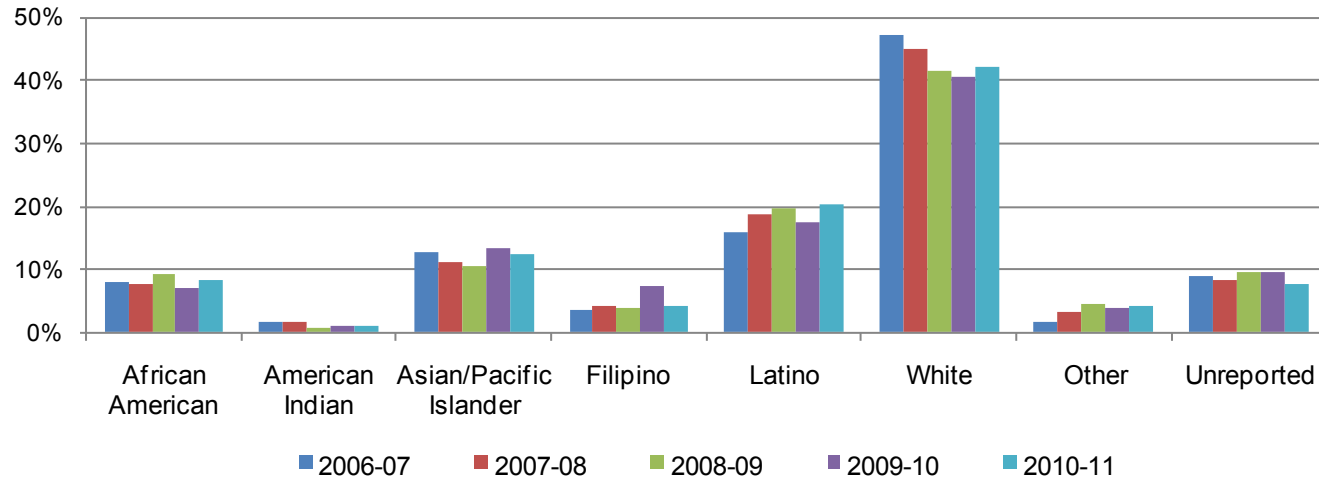
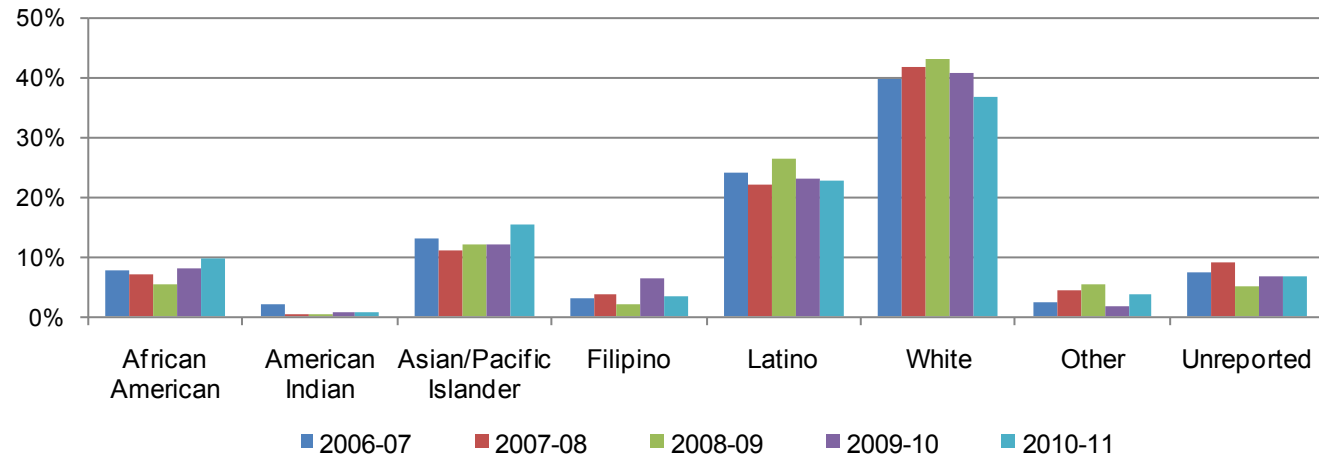


Figure 3.15.4. SDCCD Annual Certificates 29 or Fewer Units by Ethnicity



SDCCD Section III: Student Outcomes (Annual Awards Conferred)

Figure 3.15.5. SDCCD Annual CE Certificates of Completion by Ethnicity

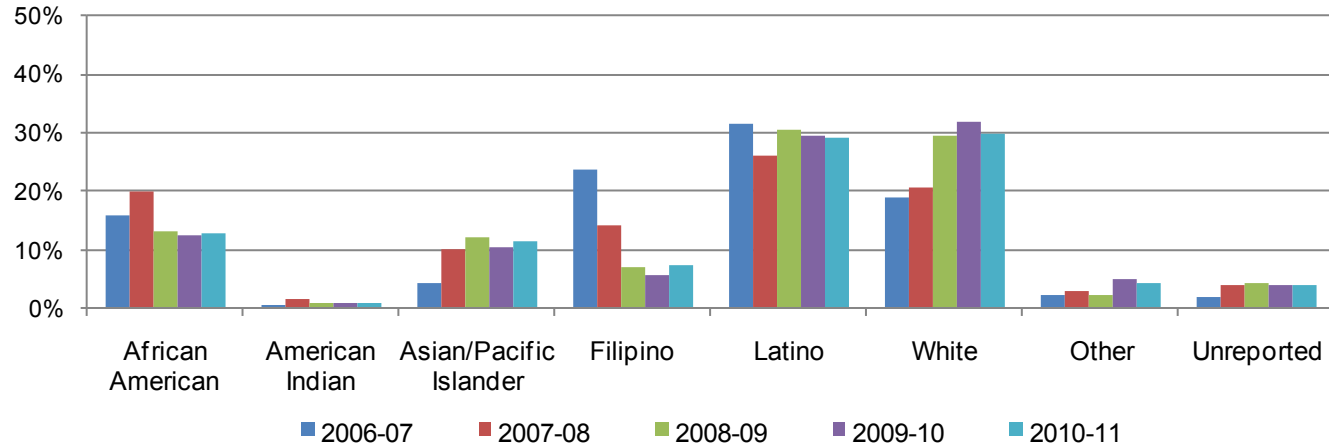
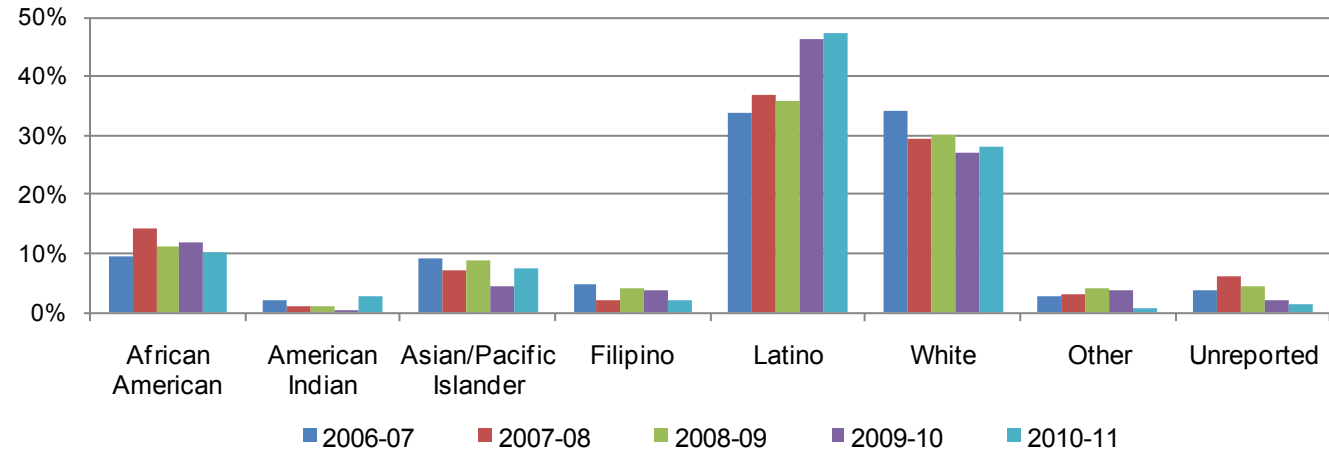
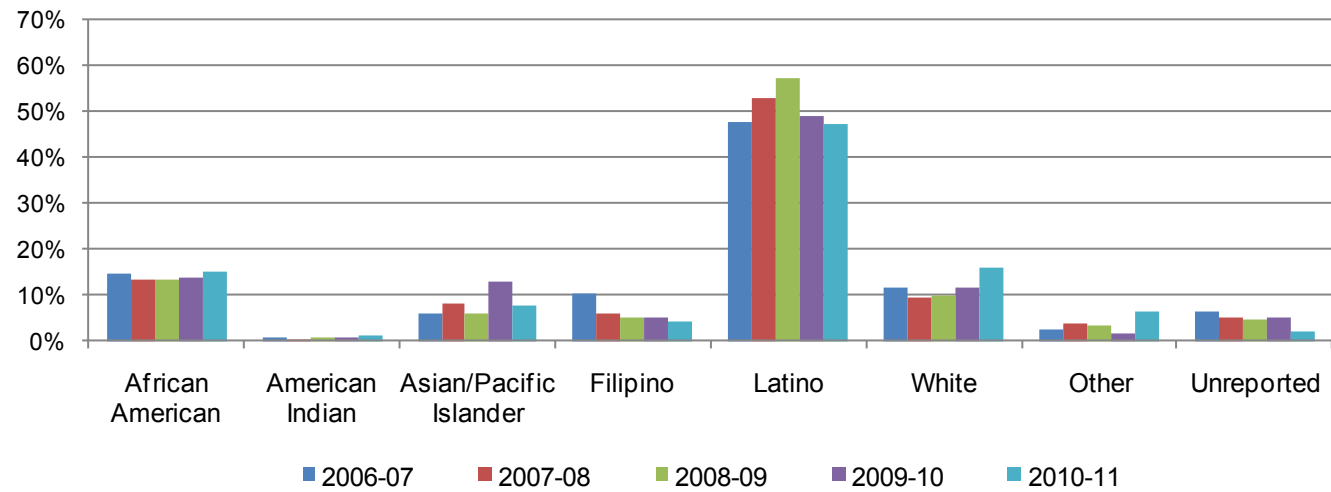


Figure 3.15.6. SDCCD Annual GED Certificates by Ethnicity



SDCCD Section III: Student Outcomes (Annual Awards Conferred)

Figure 3.15.7. SDCCD Annual High School Diploma



SDCCD Section III: Student Outcomes (Annual Awards Conferred)

Table 3.15. SDCCD Annual Awards Conferred by Ethnicity

		2006-07		2007-08		2008-09		2009-10		2010-11		% Change 06/07-10/11	Districtwide Average 06/07-10/11
AA/AS Degree	African American	182	8%	194	9%	149	7%	167	8%	170	8%	-7%	8%
	American Indian	25	1%	17	1%	15	1%	20	1%	16	1%	-36%	1%
	Asian/Pacific Islander	281	13%	283	14%	260	12%	257	12%	272	13%	-3%	13%
	Filipino	152	7%	137	7%	138	6%	151	7%	129	6%	-15%	7%
	Latino	395	18%	420	20%	408	19%	427	21%	457	22%	16%	20%
	White	881	40%	765	37%	863	41%	805	39%	750	37%	-15%	39%
	Other	80	4%	76	4%	86	4%	91	4%	82	4%	3%	4%
	Unreported	213	10%	178	9%	205	10%	163	8%	158	8%	-26%	9%
	Total	2,209	100%	2,070	100%	2,124	100%	2,081	100%	2,034	100%	-8%	100%
Certificate 60 or More	African American	2	6%	1	5%	0	0%	1	9%	0	0%	-100%	4%
	American Indian	0	0%	0	0%	0	0%	0	0%	0	0%	---	0%
	Asian/Pacific Islander	4	13%	3	14%	5	21%	1	9%	0	0%	-100%	14%
	Filipino	4	13%	4	18%	1	4%	3	27%	0	0%	-100%	13%
	Latino	3	10%	3	14%	4	17%	2	18%	1	25%	-67%	14%
	White	13	42%	7	32%	9	38%	3	27%	2	50%	-85%	37%
	Other	0	0%	0	0%	1	4%	0	0%	0	0%	---	1%
	Unreported	5	16%	4	18%	4	17%	1	9%	1	25%	-80%	16%
	Total	31	100%	22	100%	24	100%	11	100%	4	100%	-87%	100%

Source: SDCCD Information System

Note: In 2009/2010, reporting procedures for high school diplomas were revised to correspond with MIS reporting requirements.

SDCCD Section III: Student Outcomes (Annual Awards Conferred)

Table 3.15. SDCCD Annual Awards Conferred by Ethnicity (continued)

		2006-07		2007-08		2008-09		2009-10		2010-11		% Change 06/07-10/11	Districtwide Average 06/07-10/11
Certificate 30 to 59 Units	African American	32	8%	31	8%	47	9%	48	7%	48	8%	50%	8%
	American Indian	6	2%	6	2%	4	1%	6	1%	5	1%	-17%	1%
	Asian/Pacific Islander	51	13%	44	11%	54	11%	90	13%	71	12%	39%	12%
	Filipino	14	4%	17	4%	20	4%	51	7%	23	4%	64%	5%
	Latino	63	16%	75	19%	101	20%	119	17%	117	20%	86%	19%
	White	188	47%	179	45%	213	42%	276	41%	241	42%	28%	43%
	Other	7	2%	13	3%	23	5%	26	4%	23	4%	229%	4%
	Unreported	36	9%	33	8%	49	10%	65	10%	43	8%	19%	9%
	Total	397	100%	398	100%	511	100%	681	100%	571	100%	44%	100%
Certificate 29 or Fewer Units	African American	48	8%	42	7%	32	5%	43	8%	51	10%	6%	8%
	American Indian	12	2%	3	1%	2	0%	4	1%	4	1%	-67%	1%
	Asian/Pacific Islander	80	13%	67	11%	70	12%	66	12%	80	15%	0%	13%
	Filipino	20	3%	23	4%	13	2%	35	6%	18	3%	-10%	4%
	Latino	149	24%	132	22%	156	27%	124	23%	118	23%	-21%	24%
	White	246	40%	248	42%	253	43%	221	41%	191	37%	-22%	41%
	Other	15	2%	26	4%	31	5%	10	2%	20	4%	33%	4%
	Unreported	46	7%	54	9%	29	5%	37	7%	35	7%	-24%	7%
	Total	616	100%	595	100%	586	100%	540	100%	517	100%	-16%	100%

Source: SDCCD Information System

Note: In 2009/2010, reporting procedures for high school diplomas were revised to correspond with MIS reporting requirements.

SDCCD Section III: Student Outcomes (Annual Awards Conferred)

Table 3.15. SDCCD Annual Awards Conferred by Ethnicity (continued)

		2006-07		2007-08		2008-09		2009-10		2010-11		% Change 06/07-10/11	Districtwide Average 06/07-10/11
CE Certificate of Completion	African American	72	16%	116	20%	156	13%	118	13%	142	13%	97%	14%
	American Indian	3	1%	9	2%	9	1%	10	1%	10	1%	233%	1%
	Asian/Pacific Islander	19	4%	59	10%	142	12%	98	10%	126	12%	563%	10%
	Filipino	107	24%	83	14%	84	7%	54	6%	80	7%	-25%	10%
	Latino	142	32%	152	26%	360	31%	278	30%	319	29%	125%	29%
	White	85	19%	121	21%	348	30%	299	32%	328	30%	286%	28%
	Other	11	2%	18	3%	26	2%	47	5%	46	4%	318%	3%
	Unreported	9	2%	23	4%	52	4%	38	4%	43	4%	378%	4%
	Total	448	100%	581	100%	1,177	100%	942	100%	1,094	100%	144%	100%
GED Certificate	African American	20	10%	28	14%	28	11%	22	12%	15	10%	-25%	11%
	American Indian	4	2%	2	1%	3	1%	1	1%	4	3%	0%	1%
	Asian/Pacific Islander	19	9%	14	7%	22	9%	8	4%	11	8%	-42%	8%
	Filipino	10	5%	4	2%	10	4%	7	4%	3	2%	-70%	3%
	Latino	71	34%	72	37%	89	36%	85	46%	69	47%	-3%	39%
	White	72	34%	58	30%	75	30%	50	27%	41	28%	-43%	30%
	Other	6	3%	6	3%	10	4%	7	4%	1	1%	-83%	3%
	Unreported	8	4%	12	6%	11	4%	4	2%	2	1%	-75%	4%
	Total	210	100%	196	100%	248	100%	184	100%	146	100%	-30%	100%
High School Diploma	African American	69	15%	66	13%	78	13%	19	14%	14	15%	-80%	14%
	American Indian	3	1%	2	0%	5	1%	1	1%	1	1%	-67%	1%
	Asian/Pacific Islander	28	6%	41	8%	34	6%	18	13%	7	8%	-75%	7%
	Filipino	49	10%	30	6%	30	5%	7	5%	4	4%	-92%	7%
	Latino	225	48%	259	53%	337	57%	67	49%	44	47%	-80%	52%
	White	56	12%	47	10%	57	10%	16	12%	15	16%	-73%	11%
	Other	12	3%	19	4%	19	3%	2	1%	6	6%	-50%	3%
	Unreported	30	6%	25	5%	28	5%	7	5%	2	2%	-93%	5%
	Total	472	100%	489	100%	588	100%	137	100%	93	100%	-80%	100%
Grand Total	4,383	100%	4,351	100%	5,258	100%	4,576	100%	4,459	100%	2%	100%	

Source: SDCCD Information System

Note: In 2009/2010, reporting procedures for high school diplomas were revised to correspond with MIS reporting requirements.

SDCCD Section III: Student Outcomes (Annual Awards Conferred)

Annual Awards Conferred by Age: Between 2006/07 and 2010/11, students between ages 18 and 24 years old received the highest number of associate degrees (38%), followed by the 25-29 year old age group (26%) on average. The pattern of data was different for Continuing Education award categories. At Continuing Education, on average, students between 30-39 and 40-49 years old consistently displayed a trend of receiving the highest number of certificates of completion (26% & 24% respectively).

Figure 3.16.1. SDCCD Annual AA/AS Degrees by Age

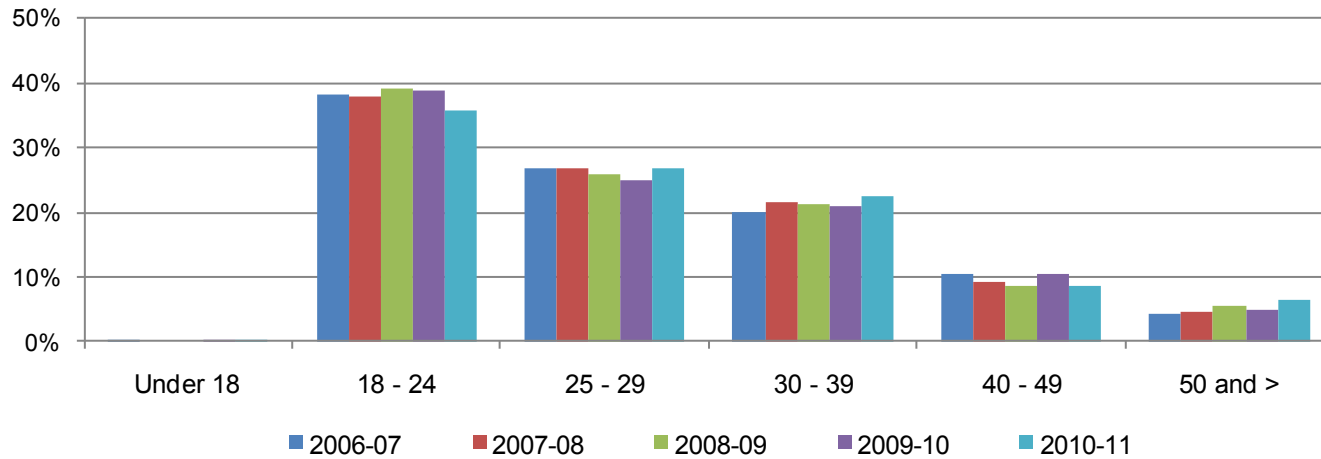
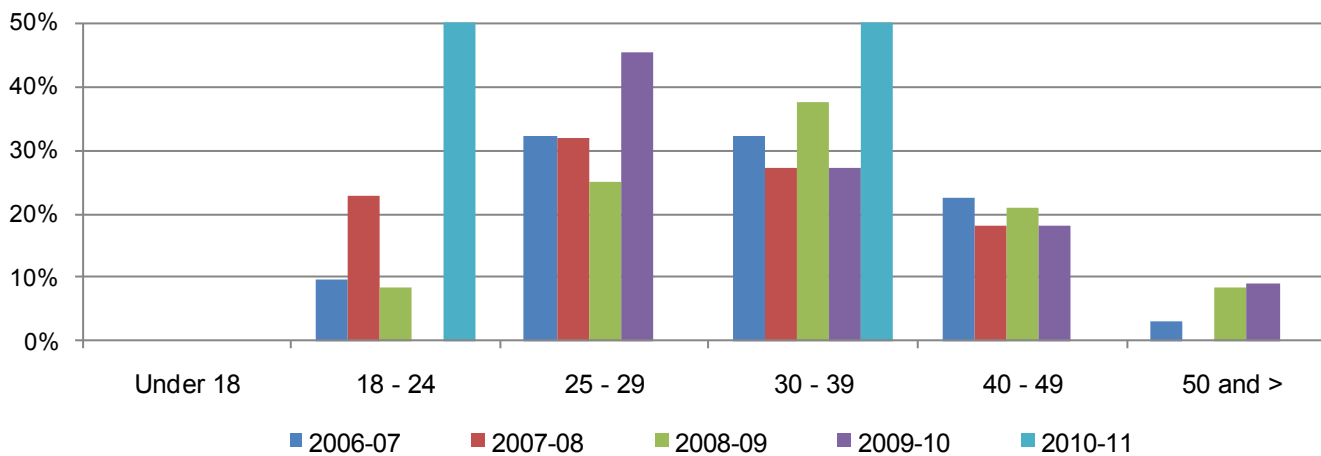


Figure 3.16.2. SDCCD Annual Certificates 60 or More Units by Age



SDCCD Section III: Student Outcomes (Annual Awards Conferred)

Figure 3.16.3. SDCCD Annual Certificates 30 to 59 Units by Age

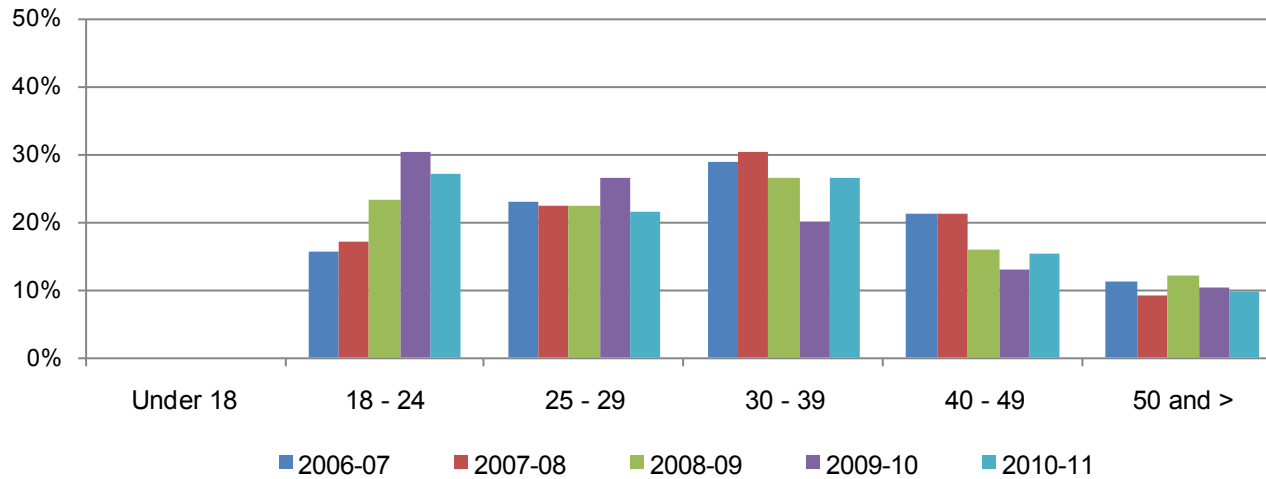
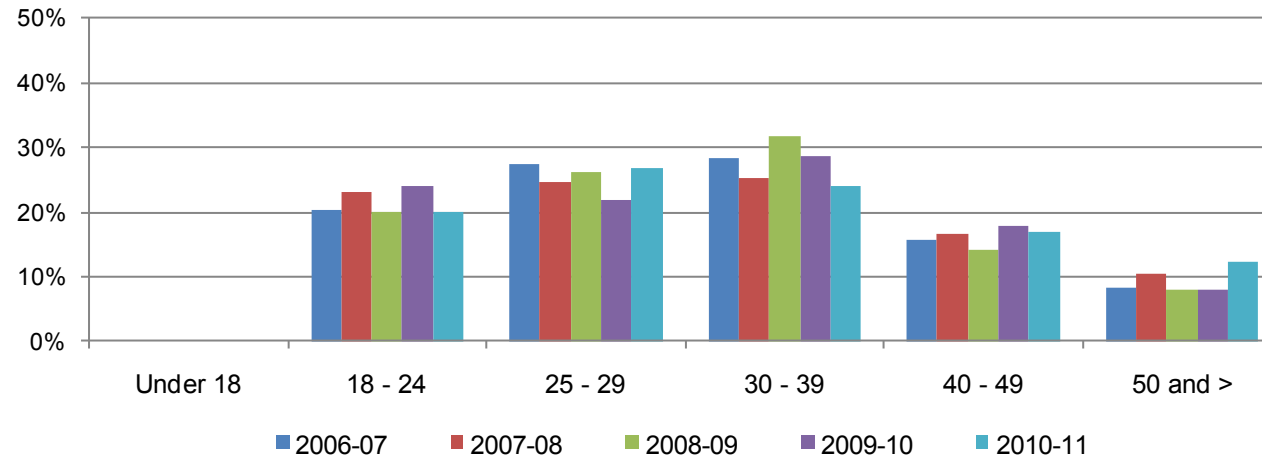


Figure 3.16.4. SDCCD Annual Certificates 29 or Fewer Units by Age



SDCCD Section III: Student Outcomes (Annual Awards Conferred)

Figure 3.16.5. SDCCD Annual CE Certificates of Completion by Age

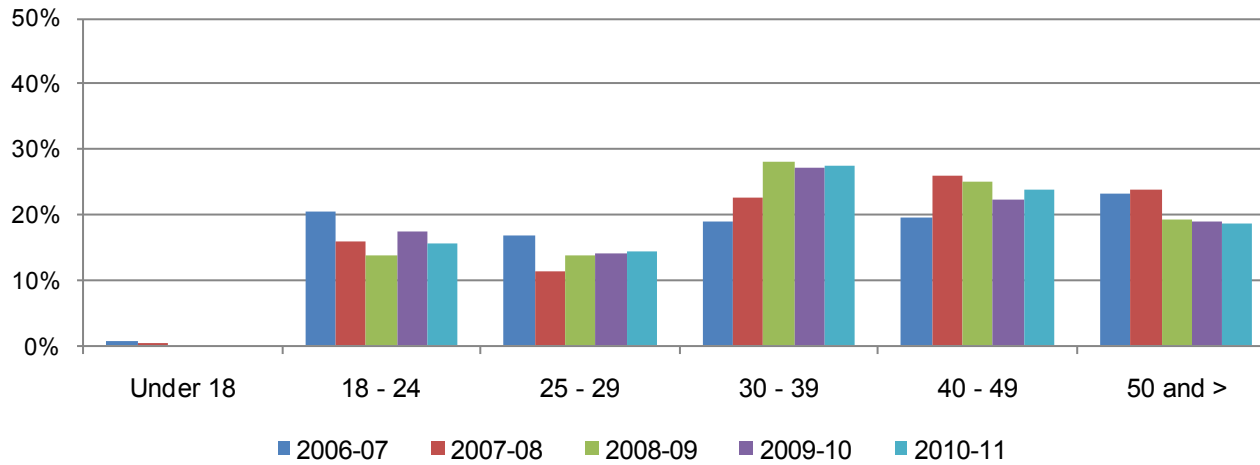
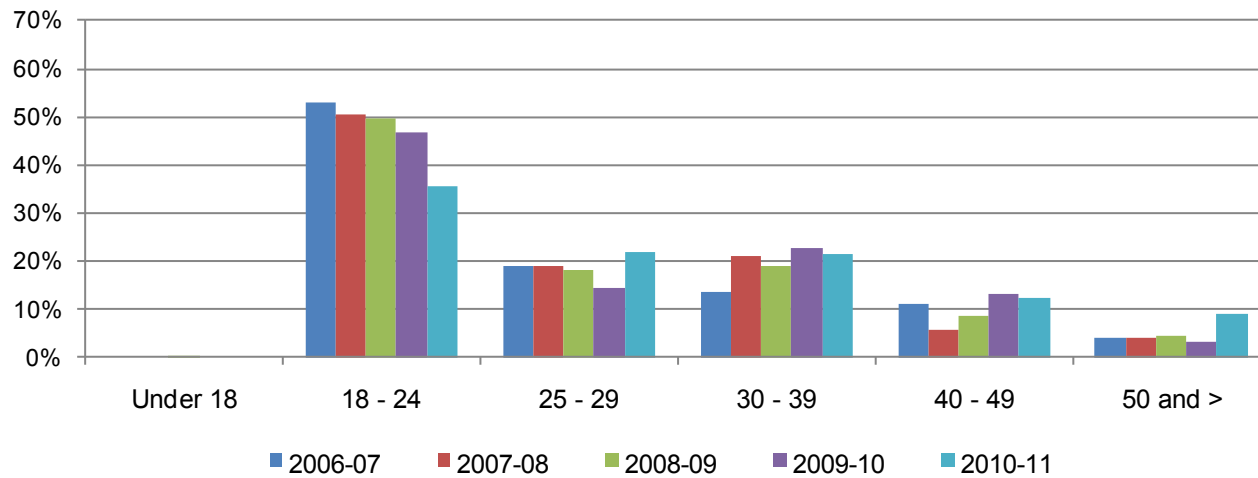
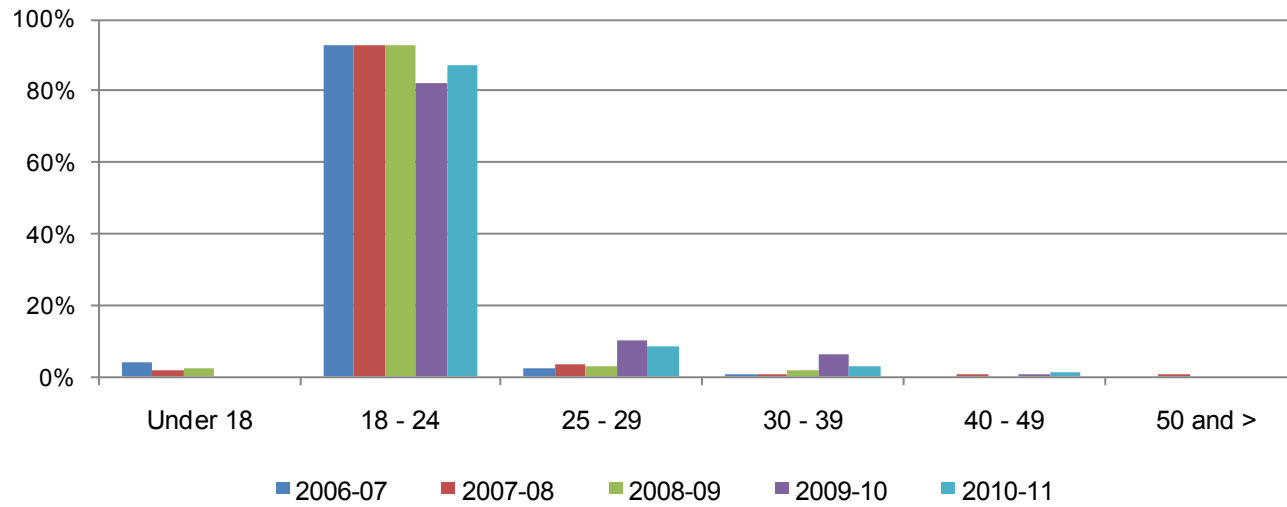


Figure 3.16.6. SDCCD Annual GED Certificates by Age



SDCCD Section III: Student Outcomes (Annual Awards Conferred)

Figure 3.16.7. SDCCD High School Diplomas by Age



SDCCD Section III: Student Outcomes (Annual Awards Conferred)

Table 3.16. SDCCD Annual Awards Conferred by Age

		2006-07		2007-08		2008-09		2009-10		2010-11		% Change 06/07-10/11	Districtwide Average 06/07-10/11
AA/AS Degree	Under 18	1	0%	0	0%	0	0%	2	0%	1	0%	0%	0%
	18 - 24	845	38%	785	38%	828	39%	810	39%	727	36%	-14%	38%
	25 - 29	592	27%	552	27%	548	26%	518	25%	547	27%	-8%	26%
	30 - 39	440	20%	448	22%	449	21%	433	21%	454	22%	3%	21%
	40 - 49	233	11%	192	9%	183	9%	216	10%	175	9%	-25%	9%
	50 and >	98	4%	93	4%	116	5%	102	5%	130	6%	33%	5%
	Total	2,209	100%	2,070	100%	2,124	100%	2,081	100%	2,034	100%	-8%	100%
Certificate 60 or More	Under 18	0	0%	0	0%	0	0%	0	0%	0	0%	---	0%
	18 - 24	3	10%	5	23%	2	8%	0	0%	2	50%	-33%	13%
	25 - 29	10	32%	7	32%	6	25%	5	45%	0	0%	-100%	30%
	30 - 39	10	32%	6	27%	9	38%	3	27%	2	50%	-80%	33%
	40 - 49	7	23%	4	18%	5	21%	2	18%	0	0%	-100%	20%
	50 and >	1	3%	0	0%	2	8%	1	9%	0	0%	-100%	4%
	Total	31	100%	22	100%	24	100%	11	100%	4	100%	-87%	100%
Certificate 30 to 59 Units	Under 18	0	0%	0	0%	0	0%	0	0%	0	0%	---	0%
	18 - 24	62	16%	68	17%	119	23%	206	30%	154	27%	148%	24%
	25 - 29	91	23%	89	22%	114	22%	181	27%	123	22%	35%	23%
	30 - 39	115	29%	121	30%	135	26%	136	20%	152	27%	32%	26%
	40 - 49	84	21%	84	21%	82	16%	88	13%	87	15%	4%	17%
	50 and >	45	11%	36	9%	61	12%	70	10%	55	10%	22%	10%
	Total	397	100%	398	100%	511	100%	681	100%	571	100%	44%	100%
Certificate 29 or Fewer Units	Under 18	0	0%	0	0%	0	0%	0	0%	0	0%	---	0%
	18 - 24	125	20%	138	23%	117	20%	129	24%	104	20%	-17%	21%
	25 - 29	169	27%	146	25%	153	26%	118	22%	139	27%	-18%	25%
	30 - 39	175	28%	151	25%	186	32%	154	29%	124	24%	-29%	28%
	40 - 49	96	16%	98	16%	83	14%	96	18%	87	17%	-9%	16%
	50 and >	51	8%	62	10%	47	8%	43	8%	63	12%	24%	9%
	Total	616	100%	595	100%	586	100%	540	100%	517	100%	-16%	100%

Source: SDCCD Information System

Note: In 2009/2010, reporting procedures for high school diplomas were revised to correspond with MIS reporting requirements.

SDCCD Section III: Student Outcomes (Annual Awards Conferred)

Table 3.16. SDCCD Annual Awards Conferred by Age (continued)

		2006-07		2007-08		2008-09		2009-10		2010-11		% Change 06/07-10/11	Districtwide Average 06/07-10/11
CE Certificate of Completion	Under 18	3	1%	1	0%	0	0%	0	0%	0	0%	-100%	0%
	18 - 24	92	21%	93	16%	162	14%	165	18%	170	16%	85%	16%
	25 - 29	76	17%	66	11%	161	14%	134	14%	159	15%	109%	14%
	30 - 39	85	19%	131	23%	332	28%	256	27%	302	28%	255%	26%
	40 - 49	88	20%	151	26%	295	25%	209	22%	260	24%	195%	24%
	50 and >	104	23%	139	24%	227	19%	178	19%	203	19%	95%	20%
	Total	448	100%	581	100%	1,177	100%	942	100%	1,094	100%	144%	100%
GED Certificate	Under 18	0	0%	0	0%	1	0%	0	0%	0	0%	---	0%
	18 - 24	111	53%	99	51%	123	50%	86	47%	52	36%	-53%	48%
	25 - 29	40	19%	37	19%	45	18%	26	14%	32	22%	-20%	18%
	30 - 39	28	13%	41	21%	47	19%	42	23%	31	21%	11%	19%
	40 - 49	23	11%	11	6%	21	8%	24	13%	18	12%	-22%	10%
	50 and >	8	4%	8	4%	11	4%	6	3%	13	9%	63%	5%
	Total	210	100%	196	100%	248	100%	184	100%	146	100%	-30%	100%
High School Diploma	Under 18	19	4%	9	2%	13	2%	0	0%	0	0%	-100%	2%
	18 - 24	437	93%	455	93%	547	93%	113	82%	81	87%	-81%	92%
	25 - 29	12	3%	18	4%	17	3%	14	10%	8	9%	-33%	4%
	30 - 39	4	1%	5	1%	11	2%	9	7%	3	3%	-25%	2%
	40 - 49	0	0%	1	0%	0	0%	1	1%	1	1%	---	0%
	50 and >	0	0%	1	0%	0	0%	0	0%	0	0%	---	0%
	Total	472	100%	489	100%	588	100%	137	100%	93	100%	-80%	100%
Grand Total	4,383	100%	4,351	100%	5,258	100%	4,576	100%	4,459	100%	2%	100%	

Source: SDCCD Information System

Note: In 2009/2010, reporting procedures for high school diplomas were revised to correspond with MIS reporting requirements.

SDCCD Section III: Student Outcomes (Annual Transfer Volume)

Annual Transfer Volume: The annual transfer volume for all colleges in the district increased 16%, from 3,253 in 2006/07 to 3,784 in 2010/11.

Figure 3.17. All Colleges Overall Annual Transfers

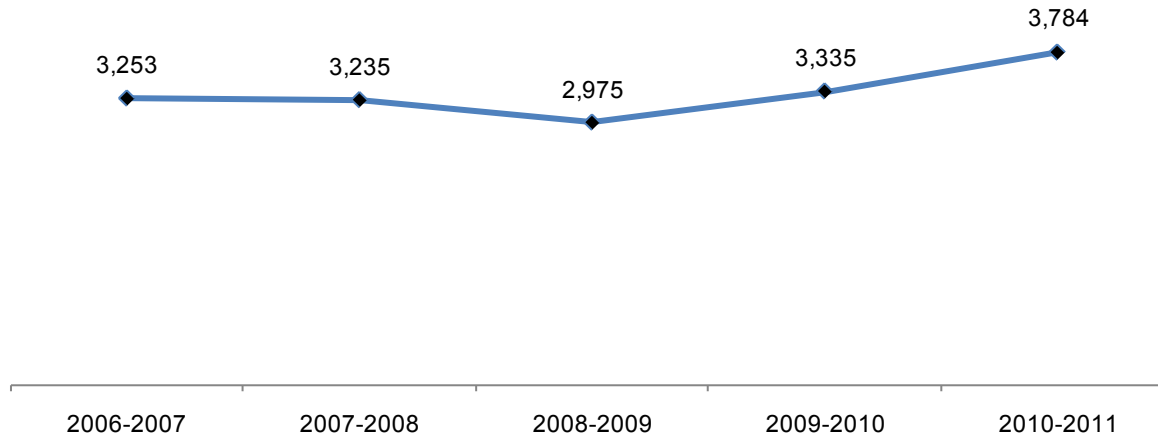


Table 3.17. All Colleges Overall Annual Transfers

	2006-07	2007-08	2008-09	2009-10	2010-11	% Change 06/07-10/11
Total	3,253	3,235	2,975	3,335	3,784	16%

Source: SDCCD Information System

SDCCD Section III: Student Outcomes (Annual Transfer Volume)

Annual Transfer Volume by Gender: Between 2006/07 and 2010/11, female students had a higher transfer volume (53%), on average, compared to their male student (47%) counterpart. The transfer volume for both male and female students increased between 2006/07 and 2010/11 (20% & 13%, respectively).

Figure 3.18. All Colleges Annual Transfers by Gender

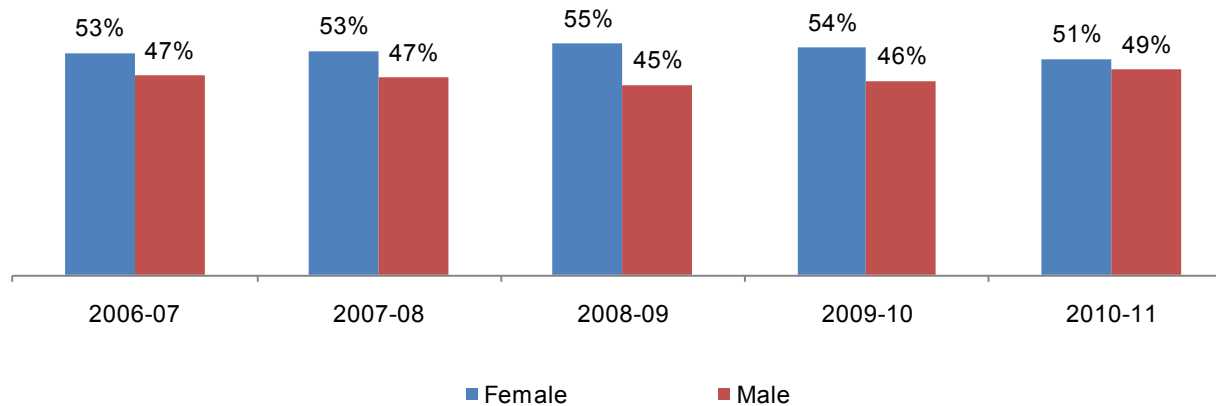


Table 3.18. All Colleges Annual Transfers by Gender

	2006-07		2007-08		2008-09		2009-10		2010-11		% Change 06/07-10/11	All Colleges Average 06/07-10/11
Female	1,712	53%	1,720	53%	1,630	55%	1,797	54%	1,941	51%	13%	53%
Male	1,540	47%	1,514	47%	1,344	45%	1,537	46%	1,843	49%	20%	47%
Unreported	1	0%	1	0%	1	0%	1	0%	0	0%	-100%	0%
Total	3,253	100%	3,235	100%	2,975	100%	3,335	100%	3,784	100%	16%	100%

Source: SDCCD Information System

SDCCD Section III: Student Outcomes (Annual Transfer Volume)

Annual Transfer Volume by Ethnicity: Of those students who transferred from all colleges in the district, nearly half were White students (45%) on average. Both Latino students (17%) and Asian/Pacific Islander students (13%) had the next highest transfer volume between 2006/07 and 2010/11. All the ethnic groups displayed an increased trend in transfer volume. Latino students increased the most by 41%, from 487 in 2006/07 to 689 in 2010/11.

Figure 3.19. All Colleges Annual Transfers by Ethnicity

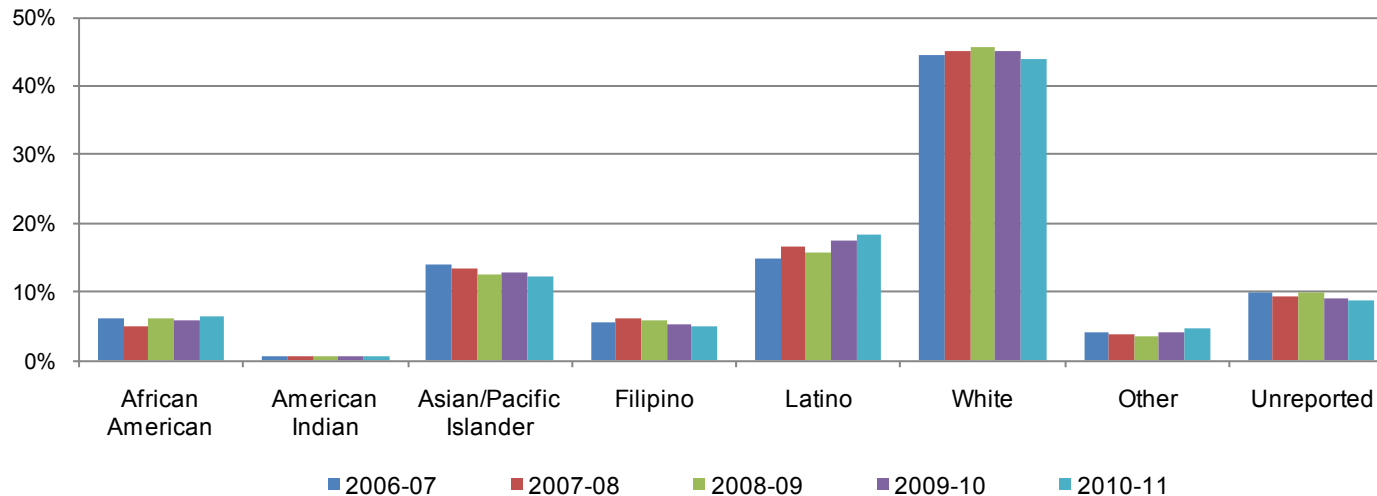


Table 3.19. All Colleges Annual Transfers by Ethnicity

	2006-07		2007-08		2008-09		2009-10		2010-11		% Change 06/07-10/11	All Colleges Average 06/07-10/11
African American	196	6%	160	5%	181	6%	198	6%	246	7%	26%	6%
American Indian	22	1%	24	1%	20	1%	21	1%	28	1%	27%	1%
Asian/Pacific Islander	457	14%	435	13%	374	13%	428	13%	461	12%	1%	13%
Filipino	185	6%	200	6%	170	6%	173	5%	188	5%	2%	6%
Latino	487	15%	539	17%	468	16%	578	17%	689	18%	41%	17%
White	1,449	45%	1,458	45%	1,361	46%	1,500	45%	1,658	44%	14%	45%
Other	133	4%	119	4%	105	4%	133	4%	178	5%	34%	4%
Unreported	324	10%	300	9%	296	10%	304	9%	336	9%	4%	9%
Total	3,253	100%	3,235	100%	2,975	100%	3,335	100%	3,784	100%	16%	100%

Source: SDCCD Information System

SDCCD Section III: Student Outcomes (Annual Transfer Volume)

Annual Transfer Volume by Age: The age groups with the highest transfer volume, on average, were students ages 18-24 (59%), students between ages 25 and 29 years old (25%), and students ages 30 to 39 years old (12%) between 2006/07 and 2010/11. All of the age groups displayed an increased trend in transfer volume, with students between ages 30 and 39 years old showing one of the greatest increases (61%) between 2006/07 and 2010/11.

Figure 3.20. All Colleges Annual Transfers by Age

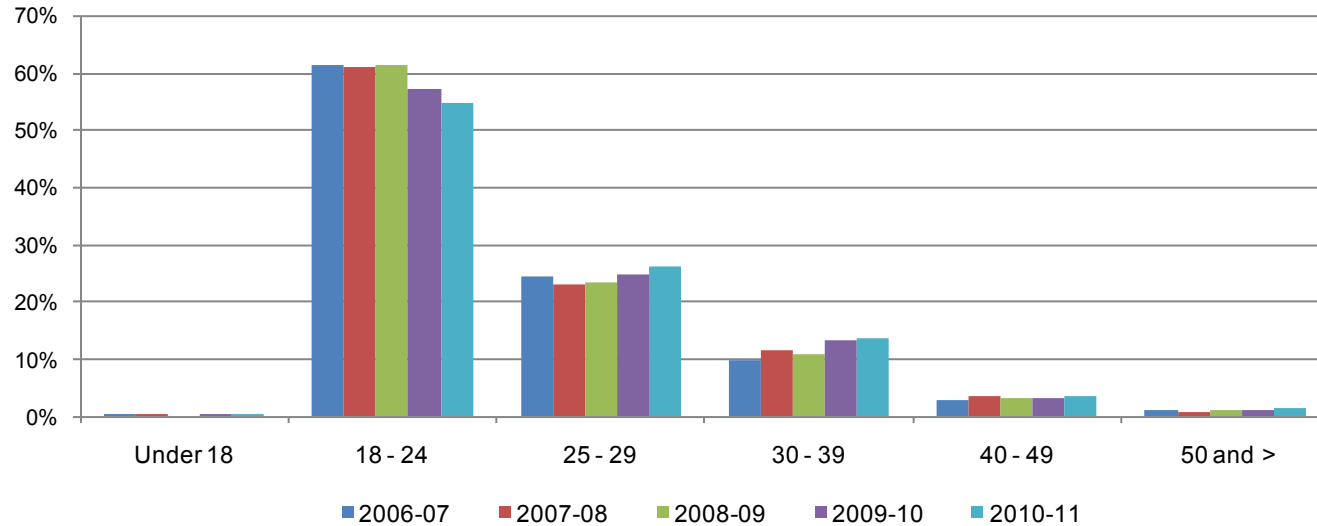


Table 3.20. All Colleges Annual Transfers by Age

	2006-07		2007-08		2008-09		2009-10		2010-11		% Change 06/07-10/11	All Colleges Average 06/07-10/11
Under 18	2	0%	4	0%	0	0%	5	0%	8	0%	300%	0%
18 - 24	2,001	62%	1,972	61%	1,824	61%	1,909	57%	2,075	55%	4%	59%
25 - 29	795	24%	748	23%	701	24%	832	25%	995	26%	25%	25%
30 - 39	324	10%	372	11%	323	11%	442	13%	522	14%	61%	12%
40 - 49	97	3%	110	3%	93	3%	110	3%	135	4%	39%	3%
50 and >	34	1%	29	1%	34	1%	37	1%	49	1%	44%	1%
Unreported	0	0%	0	0%	0	0%	0	0%	0	0%	---	0%
Total	3,253	100%	3,235	100%	2,975	100%	3,335	100%	3,784	100%	16%	100%

Source: SDCCD Information System

SDCCD Section III: Student Outcomes (Annual Transfer Volume)

Annual Transfer Volume by CSU-UC/Private (In-State)/Out-of-State: On average, nearly half of the all colleges in the district transfer volume were students who transferred into the California State University system (CSU) (49%), followed by the University of California system (UC) (19%), Out-Of State institutions (18%), and then In-State private institutions (15%). Students who transferred from all colleges in the district to an In-State private institution continued to show dramatic increases in transfer volume (65%), from 368 in 2006/07 to 606 in 2010/11.

Figure 3.21. All Colleges Annual Transfers by CSU-UC/Private (In-State)/Out-of-State

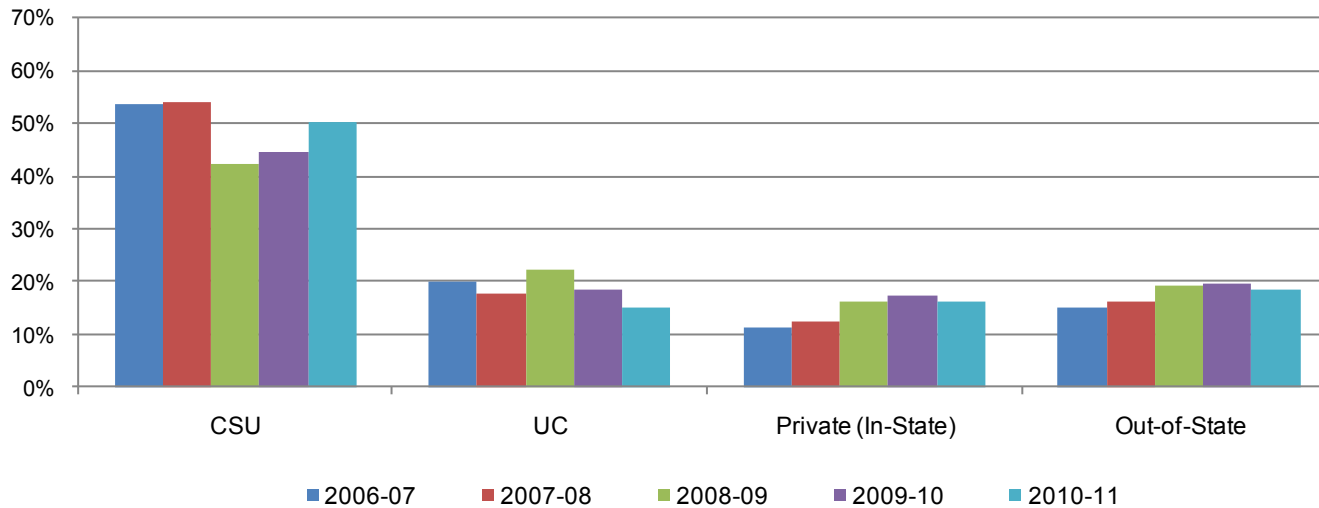


Table 3.21. All Colleges Annual Transfers by CSU-UC/Private (In-State)/Out-of-State

	2006-07		2007-08		2008-09		2009-10		2010-11		% Change 06/07-10/11	All College Average 06/07-10/11
CSU	1,740	53%	1,744	54%	1,255	42%	1,485	45%	1,907	50%	10%	49%
UC	656	20%	571	18%	665	22%	615	18%	576	15%	-12%	19%
Private (In-State)	368	11%	402	12%	478	16%	576	17%	606	16%	65%	15%
Out-of-State	489	15%	518	16%	577	19%	659	20%	695	18%	42%	18%
Total	3,253	100%	3,235	100%	2,975	100%	3,335	100%	3,784	100%	16%	100%

Source: SDCCD Information System

Note: Out-of-State includes both public and private 4-year institutions.

SDCCD Section III: Student Outcomes (Annual Transfer Volume)

Annual Transfer Volume by CSU/UC: Of the total students who transferred from all colleges in the district, 68% transferred into either the California State University (CSU) or University of California (UC) system on average (49% & 19%, respectively). Of the total number of students who transferred to CSU or UC system, the majority of students went to CSU (73%) and more than one-quarter went to UC (27%) on average. The CSU system showed an increased trend in the number of students who transferred from all colleges in the district (10%), while the UC system showed a decreased trend (12%) between 2006/07 and 2010/11.

Figure 3.22. All Colleges Annual Transfers by CSU/UC

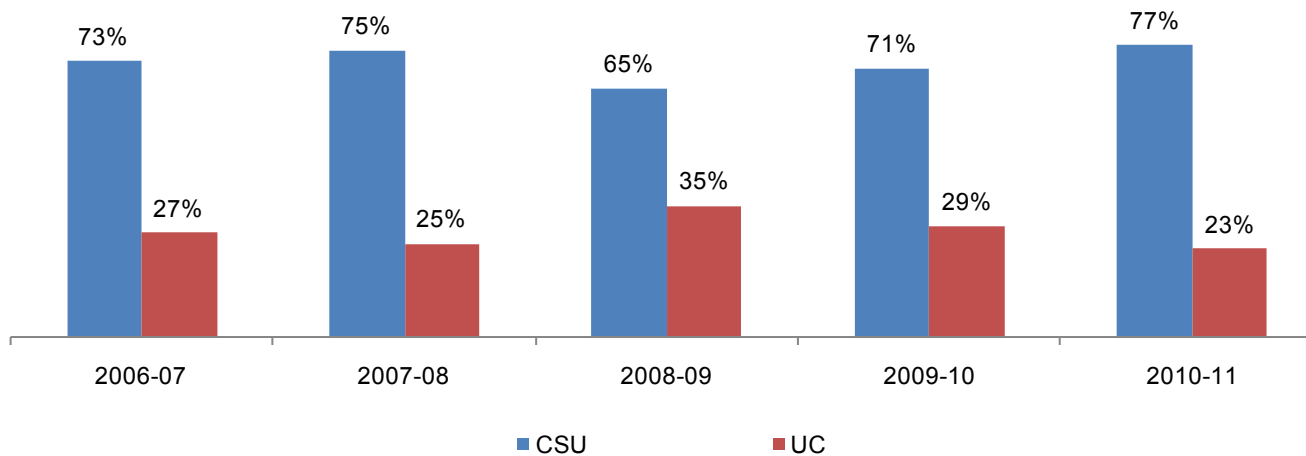


Table 3.22. All Colleges Annual Transfers by CSU/UC

	2006-07		2007-08		2008-09		2009-10		2010-11		% Change 06/07-10/11	All Colleges Average 06/07-10/11
CSU	1,740	73%	1,744	75%	1,255	65%	1,485	71%	1,907	77%	10%	73%
UC	656	27%	571	25%	665	35%	615	29%	576	23%	-12%	27%
Total	2,396	100%	2,315	100%	1,920	100%	2,100	100%	2,483	100%	4%	100%

Source: SDCCD Information System

SDCCD Section III: Student Outcomes (Annual Transfer Volume)

Annual Transfer Volume by Institution Type: Of those who transferred from all colleges within the district, on average, 24% transferred to a private institution and 76% transferred to a public institution. Both public and private institutions showed an increased trend in the number of students who transferred from all colleges within the district (8% & 53%, respectively) to their respective institutions between 2006/07 and 2010/11.

Figure 3.23. All Colleges Annual Transfers by Institution Type

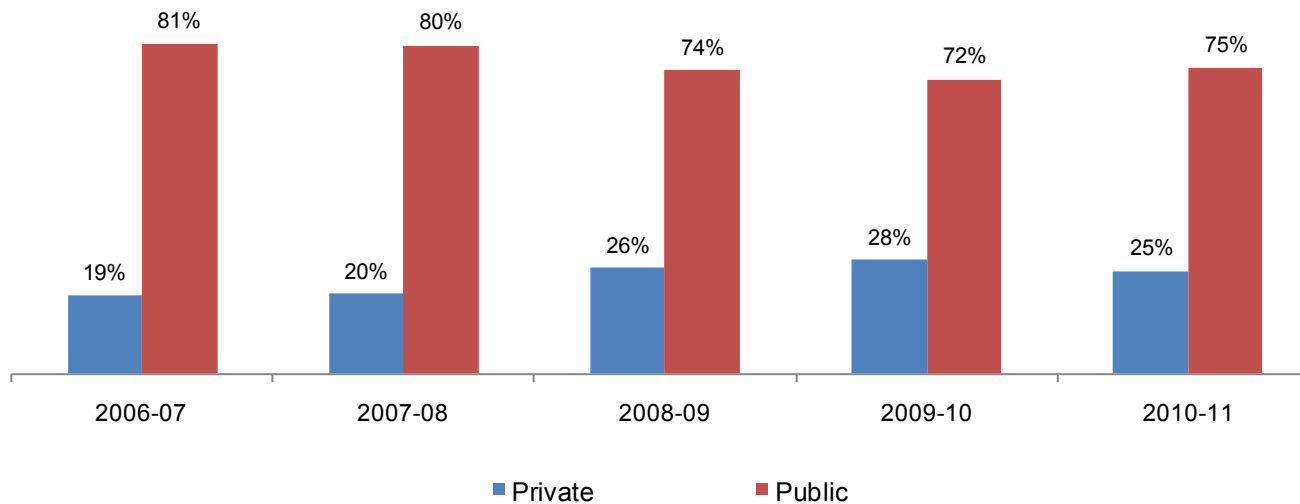


Table 3.23. All Colleges Annual Transfers by Institution Type

	2006-07		2007-08		2008-09		2009-10		2010-11		% Change 06/07-10/11	All Colleges Average 06/07-10/11
Private	626	19%	634	20%	769	26%	930	28%	957	25%	53%	24%
Public	2,627	81%	2,601	80%	2,206	74%	2,405	72%	2,827	75%	8%	76%
Total	3,253	100%	3,235	100%	2,975	100%	3,335	100%	3,784	100%	16%	100%

Source: SDCCD Information System

Note: Public and Private include both Out-of-State and In-State 4-year institutions

**Section IV
Productivity and Efficiency**

SDCCD Section IV: Productivity and Efficiency

This section of the Fact Book contains information on productivity and efficiency measures. The following describes in detail each of the measures:

- 1) FTES. The first measure reported in this section is a measure of productivity. FTES is a calculation of full-time equivalent students enrolled as of official census and is based on the total number of student contact hours. Starting in 2009-10 tutoring hours (course number 044) can only be claimed for Basic Skills classes at the credit colleges.
- 2) Enrollments. The second measure in this section of the report is also a measure of productivity. Enrollments are the number of seats enrolled or duplicated headcount as of a class census day (excludes those students who dropped or never attended prior to census day). Cancelled and tutoring classes are excluded. The measure counts all of the classes in which a single student is enrolled compared to unduplicated headcount which counts the student only once regardless of the number of classes he/she may be enrolled in.
- 3) Fill Rates. The third measure reported in this section is a measure of efficiency. Fill rates are the enrollment divided by the capacity or enrollment maximum defined in the curriculum as Cap. Apprenticeship, non-state supported, in-service, cancelled, tutoring, and classes with 0 capacity are excluded from the Fill Rate calculation. Positive attendance capacity is estimated at 60% of the recorded cap for Fill Rate calculation.
- 4) Load. The fourth measure reported in this section is a measure of efficiency. Load is a calculation of the ratio of Weekly Student Contact Hours (WSCH) to Full-time Equivalent Faculty (WSCH/FTEF).

SDCCD Section IV: Productivity and Efficiency (FTES)

Annual FTES: The District showed a 11% increase in credit FTES between 2006/07 and 2010/11. Non-credit FTES showed a steady increase over the same five year period then dipped by nearly 17% between 2008/09 and 2010/11. Overall, FTES increased Districtwide by 4% between 2006/07 and 2010/11.

Figure 4.1. SDCCD Resident & Non Resident Annual FTES

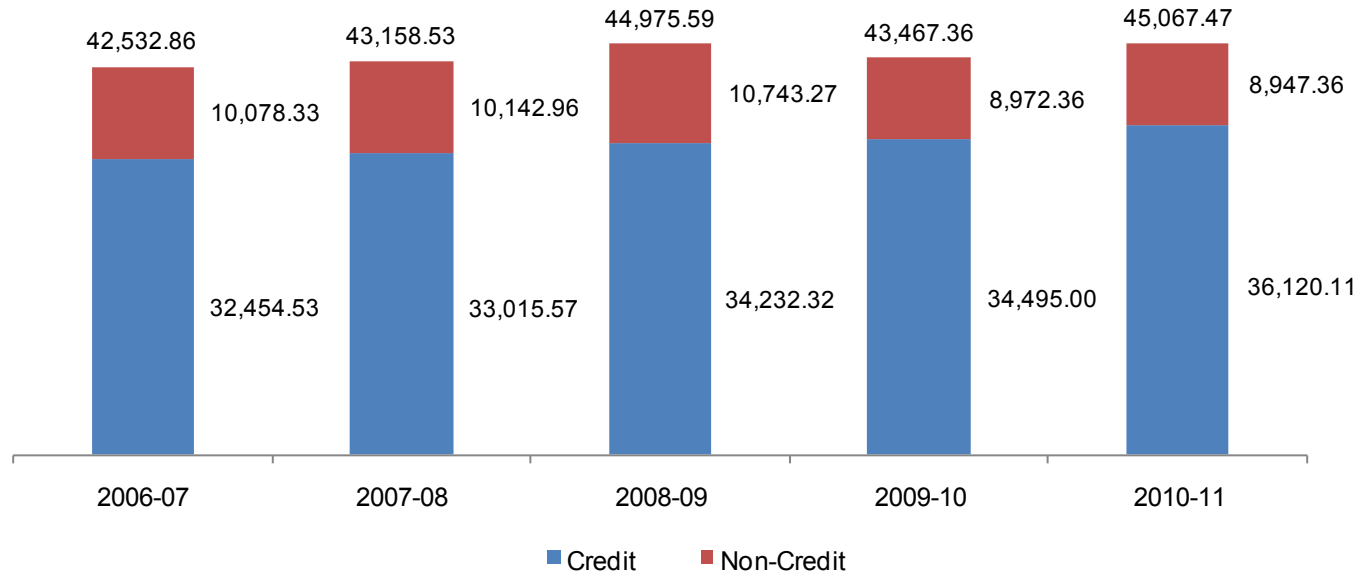


Table 4.1. SDCCD Resident & Non Resident Annual FTES

	2006-07	2007-08	2008-09	2009-10	2010-11
Credit	32,454.53	33,015.57	34,232.32	34,495.00	36,120.11
Non-Credit	10,078.33	10,142.96	10,743.27	8,972.36	8,947.36
Total	42,532.86	43,158.53	44,975.59	43,467.36	45,067.47

Source: SDCCD Information System

SDCCD Section IV: Productivity and Efficiency (Enrollments)

Enrollments: The enrollment trend for the online mode of instruction increased for summer (39%), fall (80%), and spring (40%) terms between 2006/07 and 2010/11. However, the districtwide enrollment trend for the on campus mode of instruction showed a decline in the summer term and remained relatively stable in the fall and spring terms (-27%, -2% & -1%, respectively). Overall, enrollment trends for the District increased in the fall and spring terms (3% & 2%, respectively), and decreased in the summer term (21%) between 2006/07 and 2010/11.

Figure 4.2.1 SDCCD Enrollments (Summer)

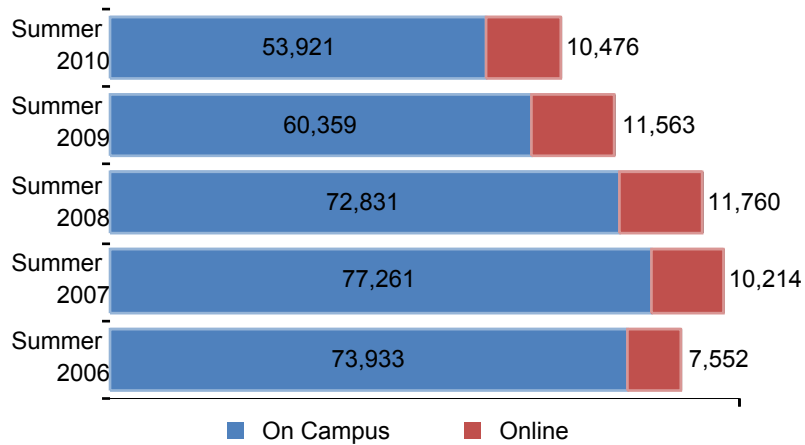


Figure 4.2.2 SDCCD Enrollments (Fall)

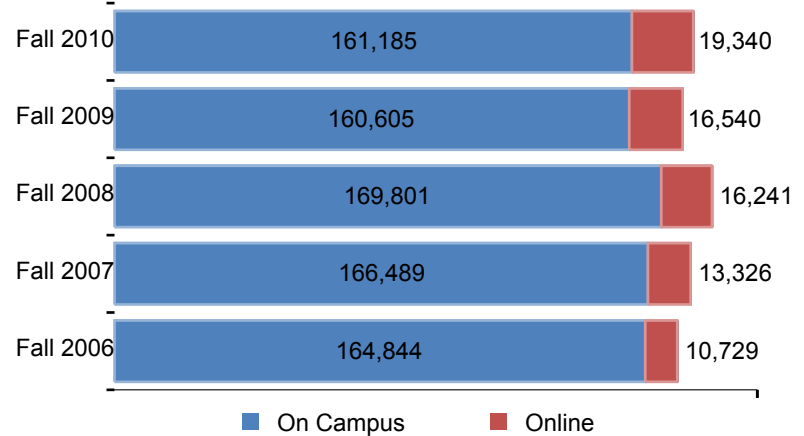
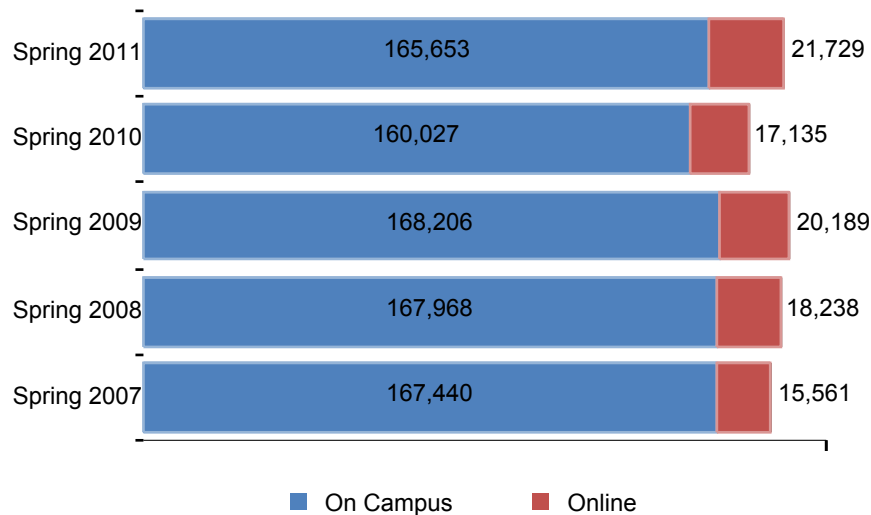


Figure 4.2.3. SDCCD Enrollments (Spring)



SDCCD Section IV: Productivity and Efficiency (Enrollments)

Table 4.2. SDCCD Enrollments

	On Campus	Online	Total
Summer 2006	73,933	7,552	81,485
Summer 2007	77,261	10,214	87,475
Summer 2008	72,831	11,760	84,591
Summer 2009	60,359	11,563	71,922
Summer 2010	53,921	10,476	64,397
Total	338,305	51,565	389,870

	On Campus	Online	Total
Fall 2006	164,844	10,729	175,573
Fall 2007	166,489	13,326	179,815
Fall 2008	169,801	16,241	186,042
Fall 2009	160,605	16,540	177,145
Fall 2010	161,185	19,340	180,525
Total	822,924	76,176	899,100

	On Campus	Online	Total
Spring 2007	167,440	15,561	183,001
Spring 2008	167,968	18,238	186,206
Spring 2009	168,206	20,189	188,395
Spring 2010	160,027	17,135	177,162
Spring 2011	165,653	21,729	187,382
Total	829,294	92,852	922,146

Source: SDCCD Information System

Note: Includes all enrolled students as of official census.

SDCCD Section IV: Productivity and Efficiency (Fill Rates)

Fill Rates: The overall fill rates for all colleges in the district were the highest in the fall and spring terms, on average, when compared to the summer terms (87% & 86% vs. 77%) between 2006/07 and 2010/11. On average, fill rates for the on campus mode of instruction across fall and spring terms (88% & 87%, respectively) were higher than the online mode of instruction (84% & 85%, respectively). In contrast, the fill rates for the online mode on instruction was higher for the summer term (81%) when compared to the on campus mode of instruction summer term (76%).

Figure 4.3.1. All Colleges Fill Rates (Summer)

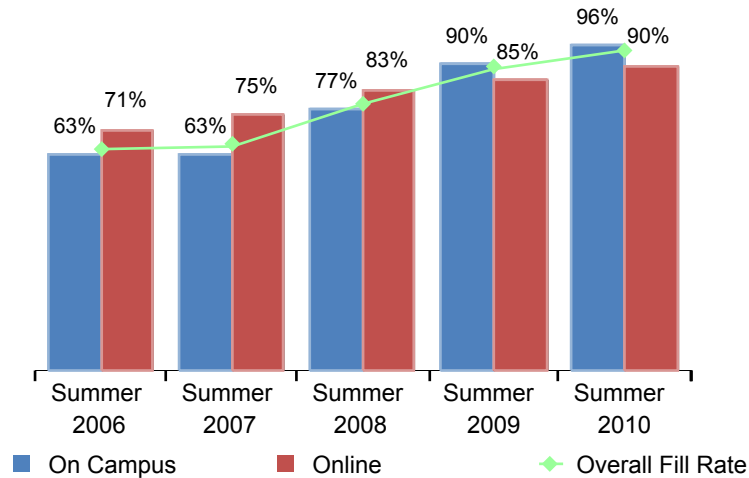


Figure 4.3.2. All Colleges Fill Rates (Fall)

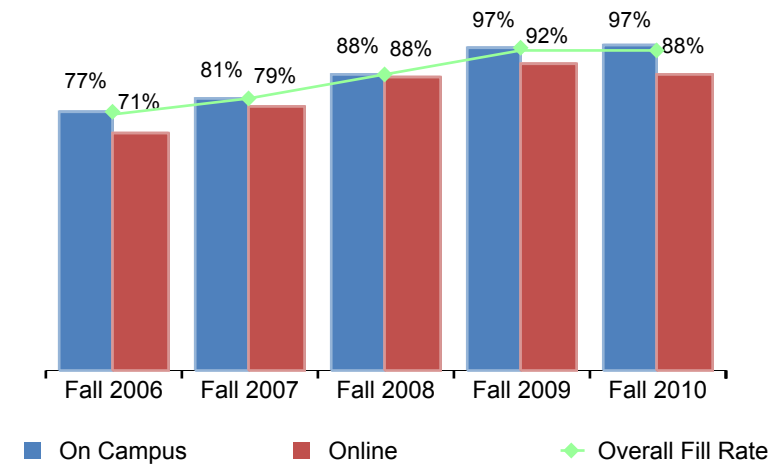
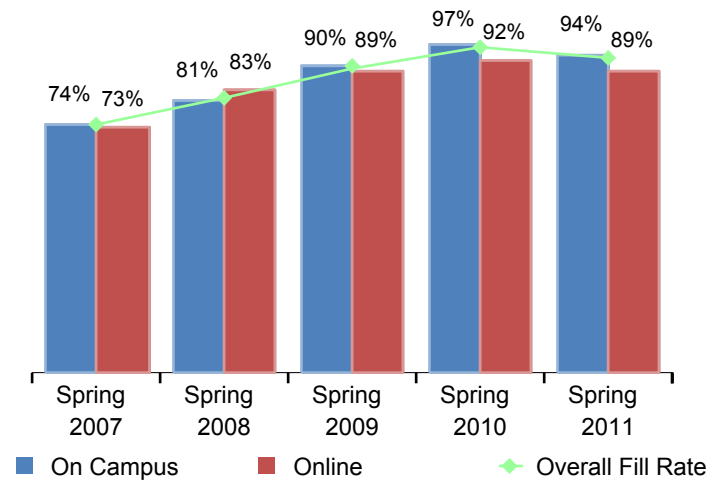


Figure 4.3.3. All Colleges Fill Rates (Spring)



SDCCD Section IV: Productivity and Efficiency (Enrollments and Fill Rates)

Table 4.3. All Colleges Enrollments and Fill Rates

	On Campus			Online			All Colleges Total		
	Enrollment	Capacity	Fill Rate	Enrollment	Capacity	Fill Rate	Enrollment	Capacity	Fill Rate
Summer 2006	26,991	40,707	63%	7,552	10,662	71%	34,543	51,369	65%
Summer 2007	27,440	41,522	63%	9,974	13,288	75%	37,414	54,810	66%
Summer 2008	28,133	36,253	77%	11,265	13,648	83%	39,398	49,901	78%
Summer 2009	28,444	31,537	90%	10,818	12,687	85%	39,262	44,224	89%
Summer 2010	25,970	27,077	96%	9,728	10,859	90%	35,698	37,936	94%
Total	136,978	177,096	76%	49,337	61,144	81%	186,315	238,239	77%

	On Campus			Online			All Colleges Total		
	Enrollment	Capacity	Fill Rate	Enrollment	Capacity	Fill Rate	Enrollment	Capacity	Fill Rate
Fall 2006	102,716	131,814	77%	10,729	15,106	71%	113,445	146,920	77%
Fall 2007	104,883	128,193	81%	12,998	16,432	79%	117,881	144,625	81%
Fall 2008	107,089	120,070	88%	15,577	17,743	88%	122,666	137,813	88%
Fall 2009	108,026	110,203	97%	15,943	17,378	92%	123,969	127,581	96%
Fall 2010	113,746	115,660	97%	18,534	20,950	88%	132,280	136,610	96%
Total	536,460	605,939	88%	73,781	87,609	84%	610,241	693,548	87%

	On Campus			Online			All Colleges Total		
	Enrollment	Capacity	Fill Rate	Enrollment	Capacity	Fill Rate	Enrollment	Capacity	Fill Rate
Spring 2007	104,283	139,864	74%	15,514	21,333	73%	119,797	161,197	74%
Spring 2008	103,270	125,959	81%	17,926	21,523	83%	121,196	147,482	81%
Spring 2009	106,850	116,181	90%	19,522	21,823	89%	126,372	138,004	90%
Spring 2010	107,962	109,954	97%	16,385	17,749	92%	124,347	127,703	96%
Spring 2011	114,037	118,820	94%	20,726	23,199	89%	134,763	142,019	93%
Total	536,402	610,779	87%	90,073	105,627	85%	626,475	716,406	86%

Source: SDCCD Information System

Note: The Enrollment and Capacity in the above table are not part of the Fill Rate calculation.

SDCCD Section IV: Productivity and Efficiency (Load)

Load: The Load values increased between Fall 2006 and Fall 2010 (489 to 572). Similarly, in the spring terms the Load values showed an increase between Spring 2007 and Spring 2011 (458 to 553). The statewide benchmark for Load is 525 for a 17.5 week semester. SDCCD has set an internal benchmark of 557, which is commensurate to its 16.5 week semester.

Figure 4.4.1. All Colleges Fall Load

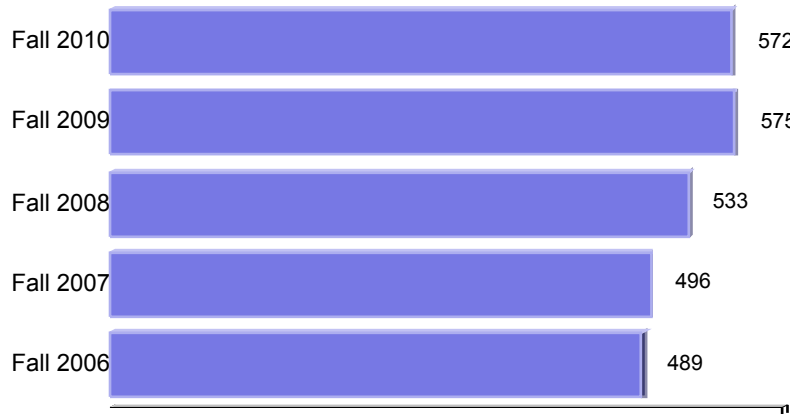


Figure 4.4.2. All Colleges Spring Load

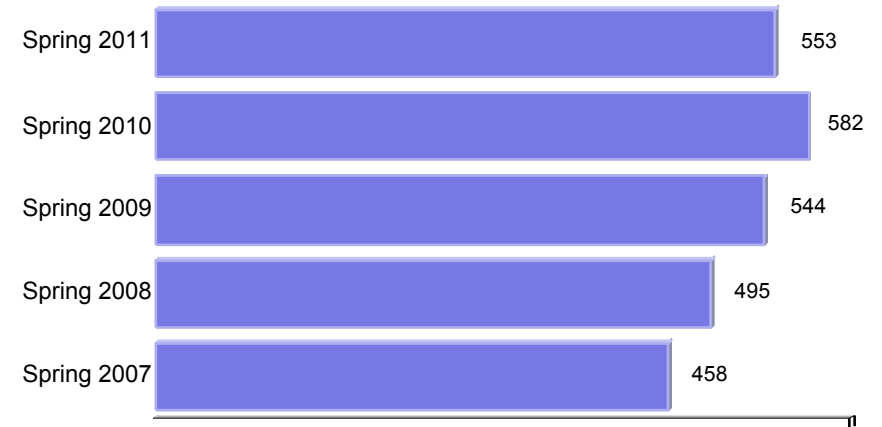


Table 4.4 All Colleges Load

	Load
Fall 2006	489
Fall 2007	496
Fall 2008	533
Fall 2009	575
Fall 2010	572
Spring 2007	458
Spring 2008	495
Spring 2009	544
Spring 2010	582
Spring 2011	553

Source: SDCCD Information System

**Section V
Human Resources**

SDCCD Section V: Human Resources

This section of the Fact Book contains information on the number and classification of employees during the Fall 2010 semester. The information is reported as follows:

- 1) Gender
- 2) Ethnicity
- 3) Employment Type

SDCCD Section V: Human Resources

Fall 2010 Employee Breakdown: There were a total of 4,452 employees working in the District during Fall 2010. The majority of employees were faculty (41% adjunct and 14% contract), and 20% of the employees were non-academic hourly, 19% were classified staff, and the remaining were management or supervisory staff (2% & 4%, respectively).

The ethnic breakdown showed that White employees comprised 52% of the total employee population, followed by Latino employees (16%) and Asian employees constituted 13% of the districtwide workforce. Among classified staff, White employees comprised 36% of the employees and made up two-thirds of the teaching faculty positions (64%) compared to all other ethnic groups. White employees constituted approximately half (52%) of management and supervisory positions (47%). African American employees comprised nearly one-tenth (9%) of the management positions and 13% of the supervisory positions. Latino employees constituted approximately one-tenth (10%) of the supervisory positions, 8% of the management positions, 12% of faculty positions, and 22% of the classified staff positions.

Figure 5.1. SDCCD Fall 2010 Employees by Employment Type

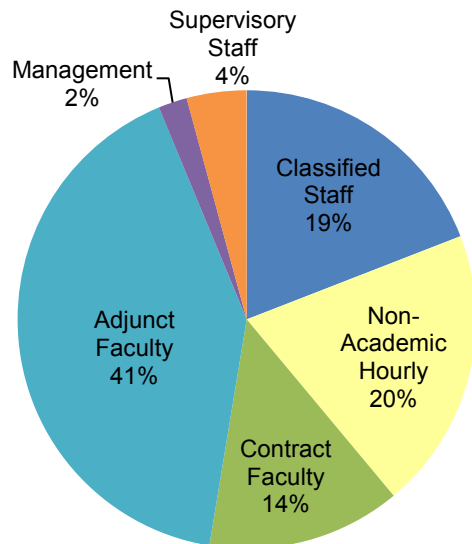
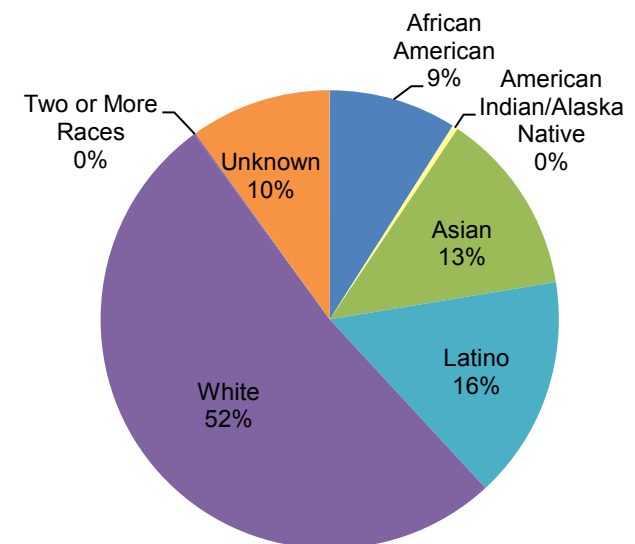


Figure 5.2. SDCCD Fall 2010 Employees by Ethnicity



SDCCD Section V: Human Resources

Table 5.1. SDCCD Fall 2010 Employment Type by Ethnicity

	African American		American Indian/ Alaska Native		Asian		Latino		Native Hawaiian or Other Pacific Islander		White		Two or More Races		Unreported		Total
Total Employees:	402	9%	18	0%	563	13%	703	16%	6	0%	2,311	52%	5	0%	444	10%	4,452
Male:	186	9%	9	0%	245	12%	285	14%	1	0%	1,032	52%	2	0%	213	11%	1,973
Female:	216	9%	9	0%	318	13%	418	17%	5	0%	1,279	52%	3	0%	231	9%	2,479
Classified Staff :	117	14%	4	0%	154	18%	187	22%	4	0%	305	36%	0	0%	79	9%	850
Male:	53	15%	1	0%	71	20%	71	20%	1	0%	135	37%	0	0%	32	9%	364
Female:	64	13%	3	1%	83	17%	116	24%	3	1%	170	35%	0	0%	47	10%	486
Non-Academic Hourly:	110	12%	1	0%	190	21%	198	22%	0	0%	298	34%	1	0%	86	10%	884
Male:	57	15%	1	0%	82	22%	60	16%	0	0%	125	34%	0	0%	44	12%	369
Female:	53	10%	0	0%	108	21%	138	27%	0	0%	173	34%	1	0%	42	8%	515
Contract Faculty:	45	7%	4	1%	43	7%	83	14%	0	0%	355	58%	0	0%	78	13%	608
Male:	23	9%	2	1%	16	6%	37	14%	0	0%	149	57%	0	0%	36	14%	263
Female:	22	6%	2	1%	27	8%	46	13%	0	0%	206	60%	0	0%	42	12%	345
Adjunct Faculty:	98	5%	8	0%	141	8%	209	11%	2	0%	1,217	66%	3	0%	154	8%	1,832
Male:	42	5%	4	0%	57	7%	103	12%	0	0%	560	67%	1	0%	71	8%	838
Female:	56	6%	4	0%	84	8%	106	11%	2	0%	657	66%	2	0%	83	8%	994
Management:	8	9%	0	0%	7	8%	7	8%	0	0%	47	52%	0	0%	21	23%	90
Male:	2	4%	0	0%	4	8%	3	6%	0	0%	24	49%	0	0%	16	33%	49
Female:	6	15%	0	0%	3	7%	4	10%	0	0%	23	56%	0	0%	5	12%	41
Supervisory Staff:	24	13%	1	1%	28	15%	19	10%	0	0%	89	47%	1	1%	26	14%	188
Male:	9	10%	1	1%	15	17%	11	12%	0	0%	39	43%	1	1%	14	16%	90
Female:	15	15%	0	0%	13	13%	8	8%	0	0%	50	51%	0	0%	12	12%	98

Source: SDCCD Information System

Table 5.2. SDCCD Employees by Gender and Employment Status

Gender		Employment Status	
Female	56%	Full-Time/Contract	39%
Male	44%	Hourly/Adjunct	61%

Source: SDCCD Information System