



2012

Fact Book

San Diego Community College District



Prepared by:
Office of Institutional Research and Planning
September 2012

SDCCD Fact Book 2012

| | | | |
|--|----|--|----|
| Overview..... | 1 | Annual Retention Rates | |
| Section I. Headcount and Student Characteristics | 2 | Overall | 35 |
| Section Overview | 3 | By Gender..... | 36 |
| Overall | 4 | By Ethnicity..... | 37 |
| By Gender..... | 5 | By Age..... | 38 |
| By Ethnicity..... | 6 | Annual GPA | |
| By Age..... | 7 | Overall | 39 |
| By Enrollment Status | 8 | By Gender..... | 40 |
| By Education Objective | 9 | By Ethnicity..... | 41 |
| By Primary Language..... | 11 | By Age..... | 42 |
| By Prior Education Level | 12 | Annual Awards Conferred | |
| By Service Area of Residence | 13 | Overall | 43 |
| By First Generation..... | 14 | By Gender..... | 44 |
| By Income Level | 15 | By Ethnicity..... | 47 |
| By DSPS | 16 | By Age..... | 54 |
| By EOPS..... | 17 | Annual Transfer | |
| By Day, Evening & Online Status | 18 | Overall | 60 |
| By Units Attempted by Units Earned | 19 | By Gender..... | 61 |
| Section II. Fall to Spring Term Persistence Rates | 21 | By Ethnicity..... | 62 |
| Section Overview | 22 | By Age..... | 63 |
| Overall | 23 | By CSU-UC/Private/Out-of-State..... | 64 |
| By Gender..... | 24 | By CSU/UC..... | 65 |
| By Ethnicity..... | 25 | By Institution Type (Private vs. Public)..... | 66 |
| By Age..... | 27 | Section IV. Productivity and Efficiency | 67 |
| Section III. Student Outcomes | 29 | Section Overview | 68 |
| Section Overview | 30 | Annual FTES..... | 69 |
| Annual Success Rates | | Enrollments: Online and On Campus..... | 70 |
| Overall | 31 | Fill Rates | 72 |
| By Gender..... | 32 | Load | 74 |
| By Ethnicity..... | 33 | Section V. Human Resources | 75 |
| By Age..... | 34 | Section Overview | 76 |
| | | Fall 2011 Employee Breakdown..... | 77 |

SDCCD Fact Book 2012

OVERVIEW

This Fact Book is a publication of the Office of Institutional Research and Planning for the San Diego Community College District. It is designed to serve the information needs of the community with a primary focus on student enrollment, demographics, and outcomes.

The Fact Book is a rich source of districtwide trend information that may be used for planning and decision making. The book contains the following five sections:

- 1) **Headcount and Student Characteristics.** Provides information on student demographic characteristics (e.g., age, ethnicity, and education objective) over five years.
- 2) **Term Persistence Rates.** Provides information about first-time to college students who complete a fall term and enroll in the subsequent spring term. The information is also reported by demographic characteristics of interest.
- 3) **Student Outcomes.** Provides information on students' successful course completion rates, retention rates, GPA, awards conferred, and transfer volume. All of the information is provided in summary form, as well as demographic characteristics of interest.
- 4) **Productivity and Efficiency.** Provides information on annual FTES, enrollment, fill rates, and Load (WSCH/FTEF).
- 5) **Human Resources.** Provides information on the number of employees by ethnicity, gender and employment type.

Each section contains the following benchmarks: 1) The percentage change over the five year period being reported, 2) The collegewide average, and 3) The "Districtwide" (includes Continuing Education) or "All Colleges" averages (excludes Continuing Education).

Section I
Headcount and Student Characteristics

SDCCD Fact Book 2012

This section of the Fact Book contains student headcount by various student characteristics. The headcount figures are single student counts (unduplicated headcount) based on official census counts at the end of the semester (all students who dropped or never attended prior to the class census date were not included). Furthermore, all cancelled classes are excluded from analyses. The headcount information is reported over a period of five years to analyze trends and establish benchmarks. Headcount information is reported by the following segments:

- 1) Overall (Colleges and Continuing Education)
- 2) Gender (Colleges and Continuing Education)
- 3) Ethnicity (Colleges and Continuing Education)
- 4) Age (Colleges and Continuing Education)
- 5) Enrollment Status (Colleges)
- 6) Educational Objective (Colleges)
- 7) Primary Language (Colleges)
- 8) Prior Educational Level (Colleges)
- 9) Service Area of Residence (Colleges and Continuing Education)
- 10) First Generation (Colleges)
- 11) Income Level (Colleges and Continuing Education)
- 12) DSPS (Colleges)
- 13) EOPS (Colleges)
- 14) Day, Evening, and Online Status (Colleges and Continuing Education)
- 15) Units Attempted by Units Earned (Colleges)

SDCCD Fact Book 2012

Overall Headcount: Unduplicated student headcount showed a 63% decrease between Summer 2007 and Summer 2011 (from 50,097 to 18,730) with a peak headcount of 51,109 in Summer 2008. Unduplicated headcount showed a 9% decline between Fall 2007 and Fall 2011 (from 82,839 to 75,003) with a peak headcount in 2008 then a continual drop in 2009, 2010, and 2011. The same held true for the spring terms with a 10% decrease between Spring 2008 and Spring 2012.

Figure 1.1. SDCCD Overall Headcount (Fall)

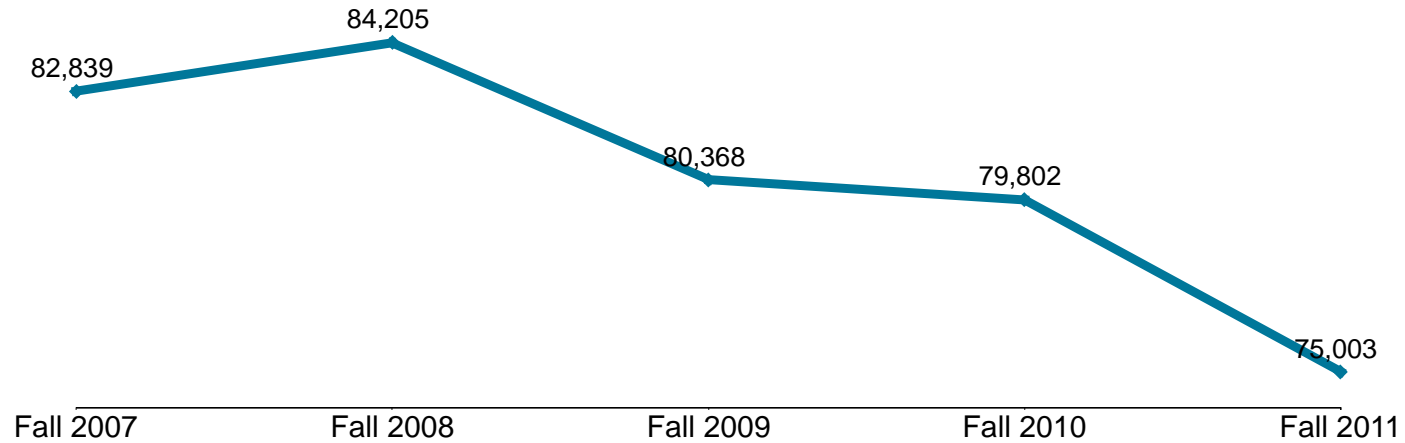


Table 1.1. SDCCD Overall Headcount (Summer, Fall, and Spring)

| | Summer 07 | Summer 08 | Summer 09 | Summer 10 | Summer 11 | % Change Summer 07-11 |
|--------------|-----------|-----------|-----------|-----------|-----------|-----------------------|
| Total | 50,097 | 51,109 | 46,575 | 42,507 | 18,730 | -63% |

| | Fall 07 | Fall 08 | Fall 09 | Fall 10 | Fall 11 | % Change Fall 07-11 |
|--------------|---------|---------|---------|---------|---------|---------------------|
| Total | 82,839 | 84,205 | 80,368 | 79,802 | 75,003 | -9% |

| | Spring 08 | Spring 09 | Spring 10 | Spring 11 | Spring 12 | % Change Spring 08-12 |
|--------------|-----------|-----------|-----------|-----------|-----------|-----------------------|
| Total | 84,162 | 84,549 | 79,524 | 81,491 | 76,013 | -10% |

Source: SDCCD Information System

SDCCD Fact Book 2012

Headcount by Gender: On average, the female student headcount (55%) was higher than their male student counterpart (44%), which remained fairly consistent between Fall 2007 and Fall 2011. Both male and female student populations showed a decline in headcount between Fall 2007 and Fall 2011 (6% & 8%, respectively).

Figure 1.2. SDCCD Headcount by Gender

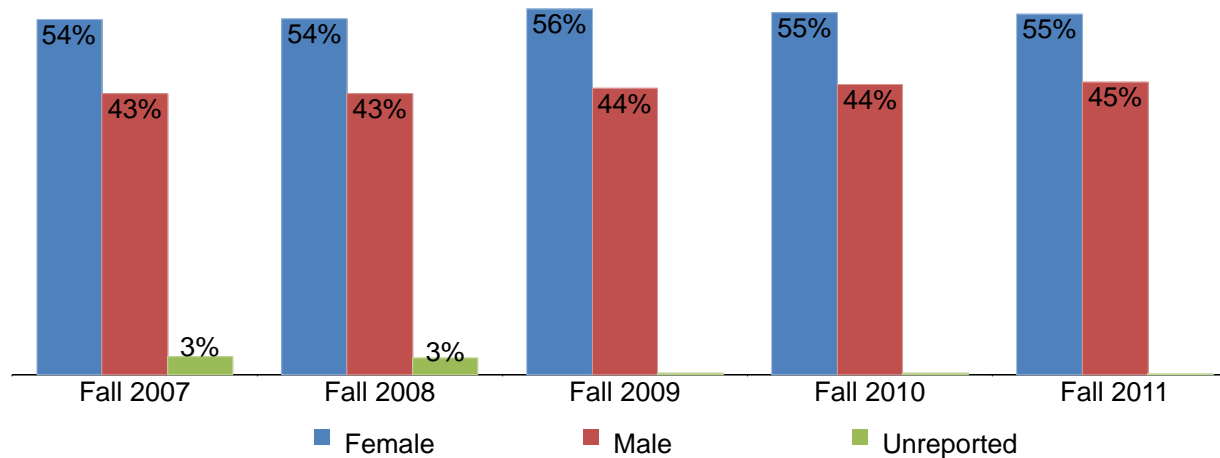


Table 1.2. SDCCD Headcount by Gender

| | Fall 07 | | Fall 08 | | Fall 09 | | Fall 10 | | Fall 11 | | % Change Fall 07-11 | Districtwide Average Fall 07-11 |
|--------------|---------------|-------------|---------------|-------------|---------------|-------------|---------------|-------------|---------------|-------------|------------------------|------------------------------------|
| Female | 45,001 | 54% | 45,872 | 54% | 44,982 | 56% | 44,240 | 55% | 41,383 | 55% | -8% | 55% |
| Male | 35,580 | 43% | 36,225 | 43% | 35,252 | 44% | 35,445 | 44% | 33,544 | 45% | -6% | 44% |
| Unreported | 2,258 | 3% | 2,108 | 3% | 134 | 0% | 117 | 0% | 76 | 0% | -97% | 1% |
| Total | 82,839 | 100% | 84,205 | 100% | 80,368 | 100% | 79,802 | 100% | 75,003 | 100% | -9% | 100% |

Source: SDCCD Information System

SDCCD Fact Book 2012

Headcount by Ethnicity: The ethnic groups that comprised the largest percentage of headcount between Fall 2007 and Fall 2011 were White students (35%), Latino students (29%), and Asian/Pacific Islander students (12%) on average. Districtwide, the students that were categorized as 'Other' ethnicities increased 49% in contrast to both the Filipino and African American student populations, which declined 17% and 11%, respectively, between Fall 2007 and Fall 2011.

Figure 1.3. SDCCD Headcount by Ethnicity

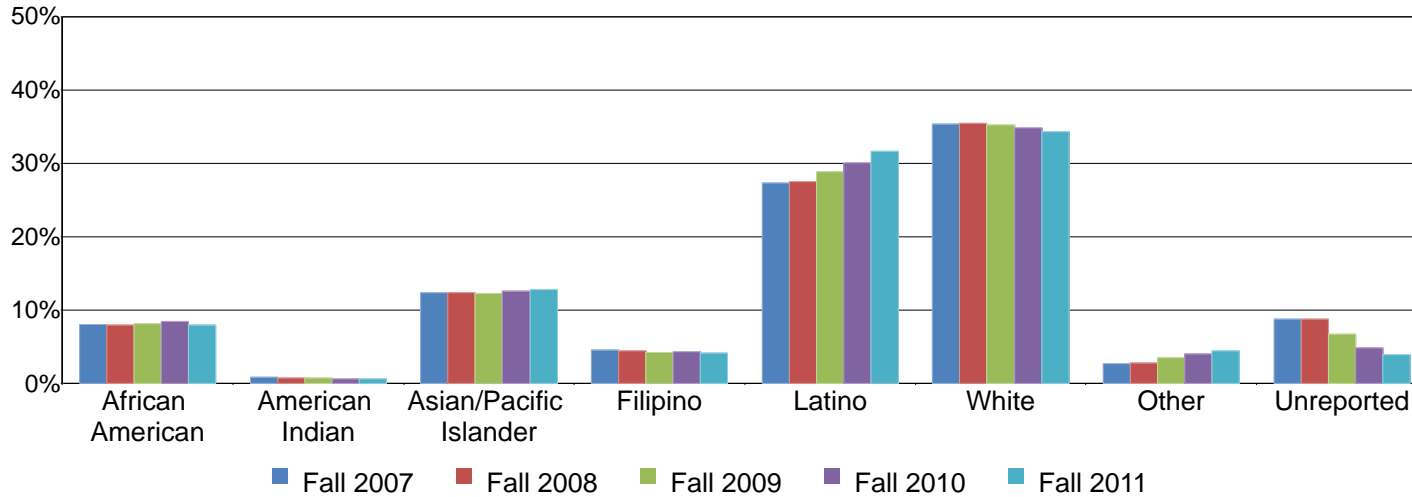


Table 1.3. SDCCD Headcount by Ethnicity

| | Fall 07 | | Fall 08 | | Fall 09 | | Fall 10 | | Fall 2011 | | % Change Fall 07-11 | Districtwide Average Fall 07-11 |
|------------------------|---------------|-------------|---------------|-------------|---------------|-------------|---------------|-------------|---------------|-------------|---------------------|---------------------------------|
| African American | 6,695 | 8% | 6,679 | 8% | 6,587 | 8% | 6,755 | 8% | 5,988 | 8% | -11% | 8% |
| American Indian | 702 | 1% | 666 | 1% | 623 | 1% | 520 | 1% | 454 | 1% | -35% | 1% |
| Asian/Pacific Islander | 10,253 | 12% | 10,419 | 12% | 9,884 | 12% | 10,073 | 13% | 9,602 | 13% | -6% | 12% |
| Filipino | 3,774 | 5% | 3,731 | 4% | 3,445 | 4% | 3,469 | 4% | 3,119 | 4% | -17% | 4% |
| Latino | 22,607 | 27% | 23,133 | 27% | 23,235 | 29% | 24,053 | 30% | 23,764 | 32% | 5% | 29% |
| White | 29,242 | 35% | 29,850 | 35% | 28,357 | 35% | 27,793 | 35% | 25,756 | 34% | -12% | 35% |
| Other | 2,263 | 3% | 2,360 | 3% | 2,822 | 4% | 3,252 | 4% | 3,366 | 4% | 49% | 3% |
| Unreported | 7,303 | 9% | 7,367 | 9% | 5,415 | 7% | 3,887 | 5% | 2,954 | 4% | -60% | 7% |
| Total | 82,839 | 100% | 84,205 | 100% | 80,368 | 100% | 79,802 | 100% | 75,003 | 100% | -9% | 100% |

Source: SDCCD Information System

SDCCD Fact Book 2012

Headcount by Age: Between Fall 2007 and Fall 2011, the districtwide age groups with the greatest number of headcount, on average, were students between ages 18 and 24 years old (36%), students age 50 and older (19%), and students ages 30-39 (16%). Students under 18 years old decreased 74%, and students between ages 40 and 49 years old decreased 12% from Fall 2007 to Fall 2011.

Figure 1.4. SDCCD Headcount by Age

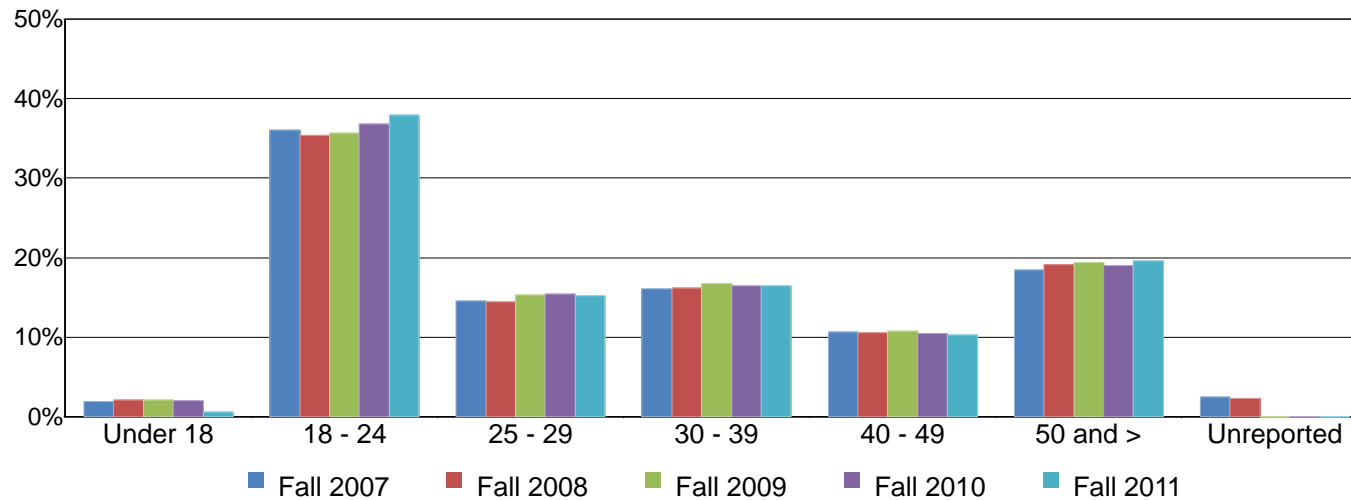


Table 1.4. SDCCD Headcount by Age

| | Fall 07 | | Fall 08 | | Fall 09 | | Fall 10 | | Fall 11 | | % Change Fall 07-11 | Districtwide Average Fall 07-11 |
|--------------|---------------|-------------|---------------|-------------|---------------|-------------|---------------|-------------|---------------|-------------|---------------------|---------------------------------|
| Under 18 | 1,560 | 2% | 1,798 | 2% | 1,696 | 2% | 1,561 | 2% | 405 | 1% | -74% | 2% |
| 18 - 24 | 29,804 | 36% | 29,737 | 35% | 28,631 | 36% | 29,334 | 37% | 28,452 | 38% | -5% | 36% |
| 25 - 29 | 12,005 | 14% | 12,159 | 14% | 12,294 | 15% | 12,310 | 15% | 11,418 | 15% | -5% | 15% |
| 30 - 39 | 13,311 | 16% | 13,576 | 16% | 13,447 | 17% | 13,111 | 16% | 12,342 | 16% | -7% | 16% |
| 40 - 49 | 8,784 | 11% | 8,926 | 11% | 8,672 | 11% | 8,329 | 10% | 7,729 | 10% | -12% | 11% |
| 50 and > | 15,312 | 18% | 16,086 | 19% | 15,620 | 19% | 15,152 | 19% | 14,655 | 20% | -4% | 19% |
| Unreported | 2,063 | 2% | 1,923 | 2% | 8 | 0% | 5 | 0% | 2 | 0% | -100% | 1% |
| Total | 82,839 | 100% | 84,205 | 100% | 80,368 | 100% | 79,802 | 100% | 75,003 | 100% | -9% | 100% |

Source: SDCCD Information System

SDCCD Fact Book 2012

Headcount by Enrollment Status: On average, 62% of the general student population for all colleges in the district comprised continuing students. The number of current high school students who were enrolled in all colleges in the district decreased 73%, from 1,905 in Fall 2007 to 519 in Fall 2011. The number of first-time to college students, on average, comprised 11% of the student population, while first-time transfer students comprised 12% of the student population between Fall 2007 and Fall 2011.

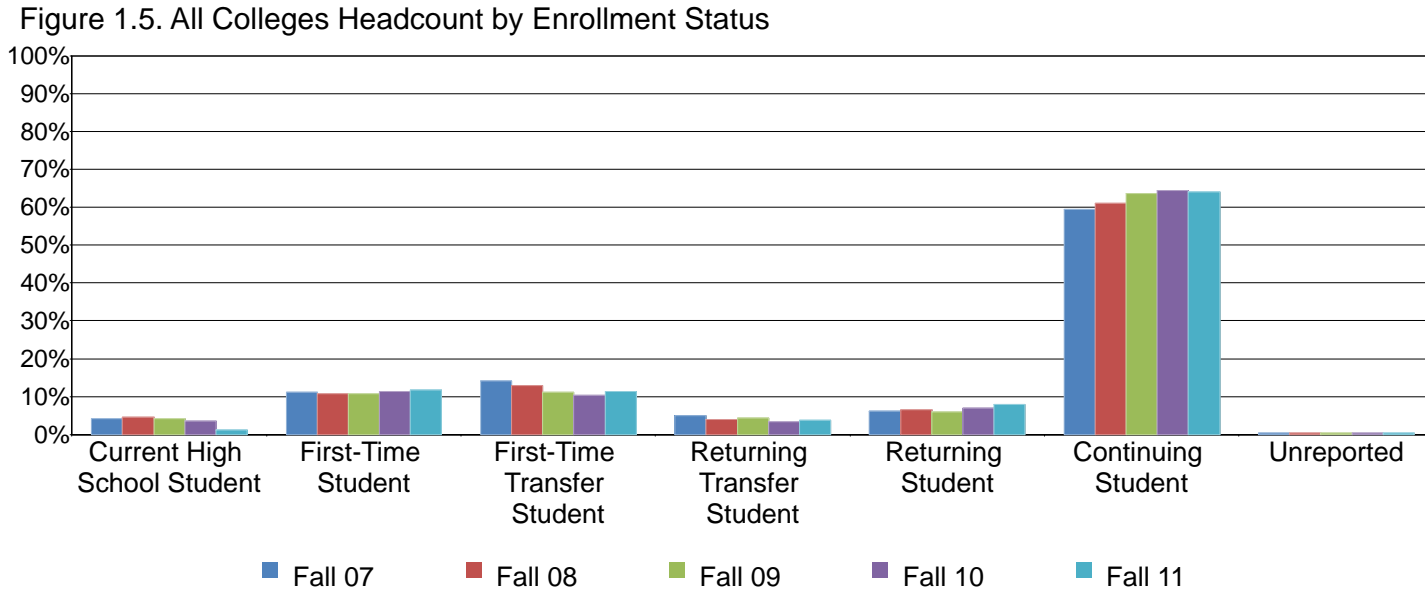


Table 1.5. All Colleges Headcount by Enrollment Status

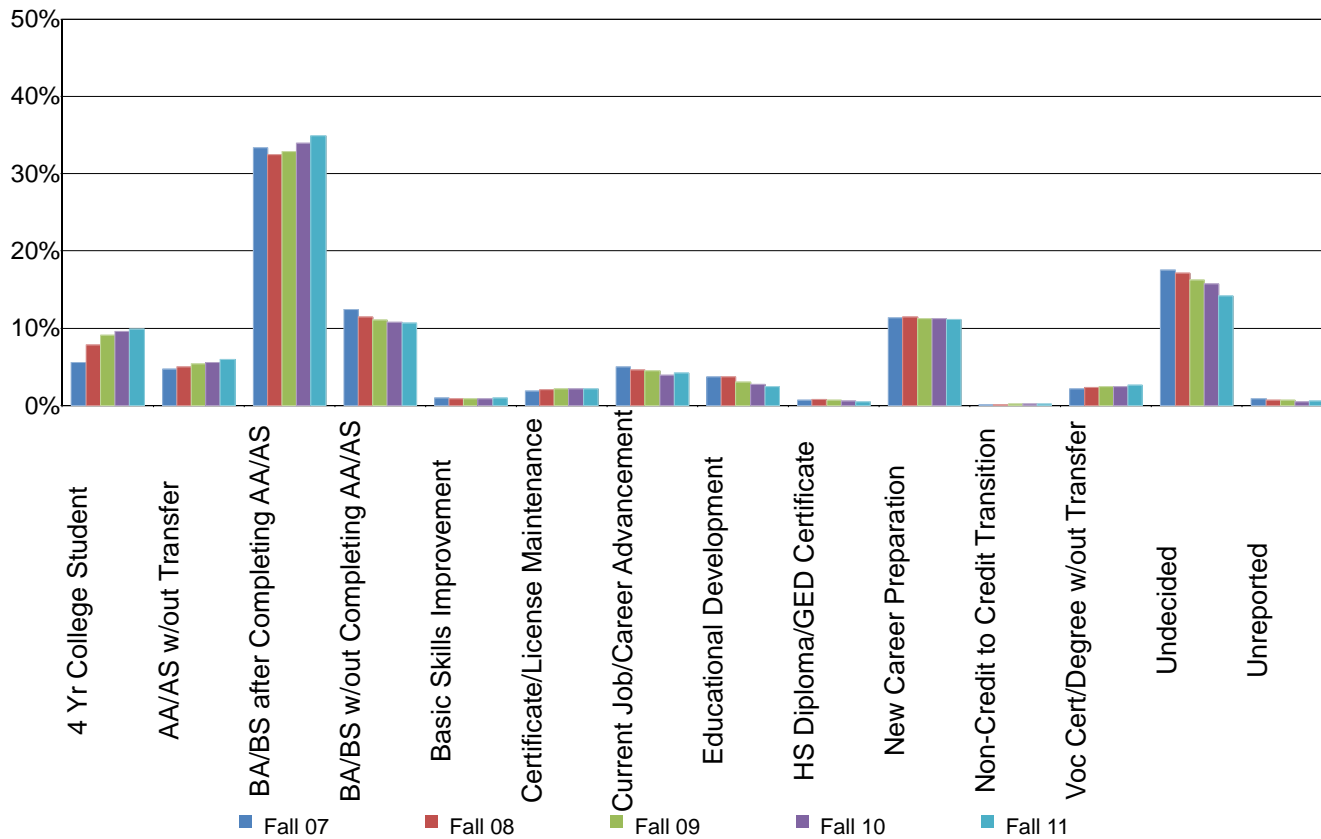
| | Fall 07 | | Fall 08 | | Fall 09 | | Fall 10 | | Fall 11 | | % Change Fall 07-11 | All Colleges Average Fall 07-11 |
|-----------------------------|---------------|-------------|---------------|-------------|---------------|-------------|---------------|-------------|---------------|-------------|---------------------|---------------------------------|
| Current High School Student | 1,905 | 4% | 2,149 | 5% | 1,952 | 4% | 1,779 | 4% | 519 | 1% | -73% | 3% |
| First-Time Student | 5,182 | 11% | 5,057 | 11% | 5,098 | 11% | 5,535 | 11% | 5,456 | 12% | 5% | 11% |
| First-Time Transfer Student | 6,583 | 14% | 6,179 | 13% | 5,296 | 11% | 5,047 | 10% | 5,263 | 11% | -20% | 12% |
| Returning Transfer Student | 2,280 | 5% | 1,900 | 4% | 2,046 | 4% | 1,610 | 3% | 1,698 | 4% | -26% | 4% |
| Returning Student | 2,877 | 6% | 3,105 | 7% | 2,799 | 6% | 3,417 | 7% | 3,690 | 8% | 28% | 7% |
| Continuing Student | 27,729 | 59% | 28,970 | 61% | 30,322 | 64% | 31,556 | 64% | 29,763 | 64% | 7% | 62% |
| Unreported | 171 | 0% | 188 | 0% | 132 | 0% | 127 | 0% | 145 | 0% | -15% | 0% |
| Total | 46,727 | 100% | 47,548 | 100% | 47,645 | 100% | 49,071 | 100% | 46,534 | 100% | -0% | 100% |

Source: SDCCD Information System

SDCCD Fact Book 2012

Headcount by Educational Objective: Approximately half of the general student population for all colleges in the district (45%) selected transfer to obtain a BA/BS with or without completing an AA/AS degree as their educational objective during the five terms being reported. Between Fall 2007 and Fall 2011, the educational objectives that made the most gain in selection were four year college student (increased by 76%), obtain an AA/AS degree without transfer (increased by 25%), and Vocational certificate/degree without transfer (increased by 24%). In contrast, students who selected educational development or high school diploma/GED certificate as educational objectives, decreased 35% and 32%, respectively, between Fall 2007 and Fall 2011.

Figure 1.6. All Colleges Headcount by Educational Objective



SDCCD Fact Book 2012

Table 1.6. All Colleges Headcount by Educational Objective

| | Fall 07 | | Fall 08 | | Fall 09 | | Fall 10 | | Fall 11 | | % Change Fall 07-11 | All Colleges Average Fall 07-11 |
|---------------------------------|---------------|-------------|---------------|-------------|---------------|-------------|---------------|-------------|---------------|-------------|------------------------|------------------------------------|
| 4 Yr College Student | 2,591 | 6% | 3,705 | 8% | 4,327 | 9% | 4,690 | 10% | 4,572 | 10% | 76% | 8% |
| AA/AS w/out Transfer | 2,196 | 5% | 2,344 | 5% | 2,551 | 5% | 2,737 | 6% | 2,752 | 6% | 25% | 5% |
| BA/BS after Completing AA/AS | 15,605 | 33% | 15,449 | 32% | 15,670 | 33% | 16,635 | 34% | 16,258 | 35% | 4% | 34% |
| BA/BS w/out Completing AA/AS | 5,779 | 12% | 5,413 | 11% | 5,245 | 11% | 5,284 | 11% | 4,932 | 11% | -15% | 11% |
| Basic Skills Improvement | 447 | 1% | 423 | 1% | 407 | 1% | 431 | 1% | 437 | 1% | -2% | 1% |
| Certificate/License Maintenance | 870 | 2% | 945 | 2% | 989 | 2% | 1,032 | 2% | 979 | 2% | 13% | 2% |
| Current Job/Career Advancement | 2,325 | 5% | 2,167 | 5% | 2,116 | 4% | 1,922 | 4% | 1,933 | 4% | -17% | 4% |
| Educational Development | 1,719 | 4% | 1,738 | 4% | 1,422 | 3% | 1,305 | 3% | 1,118 | 2% | -35% | 3% |
| HS Diploma/GED Certificate | 323 | 1% | 351 | 1% | 322 | 1% | 295 | 1% | 221 | 0% | -32% | 1% |
| New Career Preparation | 5,303 | 11% | 5,425 | 11% | 5,345 | 11% | 5,507 | 11% | 5,193 | 11% | -2% | 11% |
| Non-Credit to Credit Transition | 41 | 0% | 48 | 0% | 60 | 0% | 77 | 0% | 83 | 0% | 102% | 0% |
| Voc Cert/Degree w/out Transfer | 968 | 2% | 1,084 | 2% | 1,143 | 2% | 1,188 | 2% | 1,202 | 3% | 24% | 2% |
| Undecided | 8,170 | 17% | 8,128 | 17% | 7,743 | 16% | 7,726 | 16% | 6,587 | 14% | -19% | 16% |
| Unreported | 390 | 1% | 328 | 1% | 305 | 1% | 242 | 0% | 267 | 1% | -32% | 1% |
| Total | 46,727 | 100% | 47,548 | 100% | 47,645 | 100% | 49,071 | 100% | 46,534 | 100% | -0% | 100% |

Source: SDCCD Information System

SDCCD Fact Book 2012

Headcount by Primary Language: On average, 93% of the general student population for all colleges in the district spoke English as their primary language. Students who reported speaking a language other than English as their primary language increased 13%, while students who reported speaking English as their primary language decreased 1% between Fall 2007 and Fall 2011.

Table 1.7. All Colleges Headcount by Primary Language

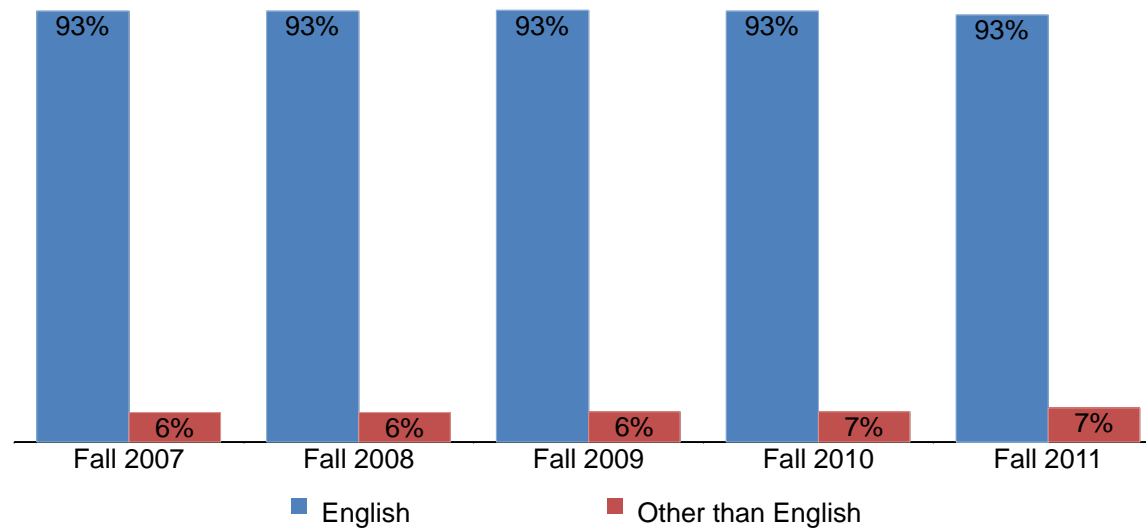


Table 1.7. All Colleges Headcount by Primary Language

| | Fall 07 | | Fall 08 | | Fall 09 | | Fall 10 | | Fall 11 | | % Change Fall 07-11 | All Colleges Average Fall 07-11 |
|--------------------|---------------|-------------|---------------|-------------|---------------|-------------|---------------|-------------|---------------|-------------|---------------------|---------------------------------|
| English | 43,623 | 93% | 44,448 | 93% | 44,543 | 93% | 45,828 | 93% | 43,092 | 93% | -1% | 93% |
| Other than English | 3,028 | 6% | 3,061 | 6% | 3,093 | 6% | 3,233 | 7% | 3,435 | 7% | 13% | 7% |
| Unreported | 76 | 0% | 39 | 0% | 9 | 0% | 10 | 0% | 7 | 0% | -91% | 0% |
| Total | 46,727 | 100% | 47,548 | 100% | 47,645 | 100% | 49,071 | 100% | 46,534 | 100% | -0% | 100% |

Source: SDCCD Information System

SDCCD Fact Book 2012

Headcount by Prior Education Level: Between Fall 2007 and Fall 2011, a majority of the general student population for all colleges in the district reported they completed high school or higher education degree (95%) on average. Both students who were special admit/K-12 and have an associate degree decreased 80% and 13%, respectively, between Fall 2007 and Fall 2011. On average, 11% of the general student population for all colleges in the district had a bachelor's degree or higher.

Figure 1.8. All Colleges Headcount by Prior Education Level

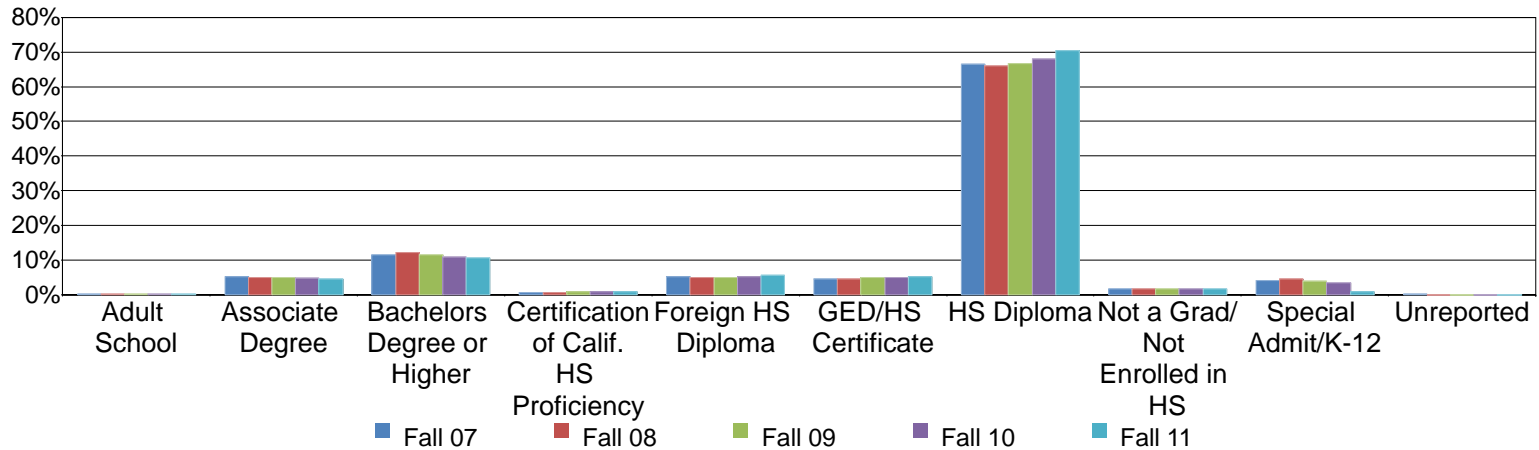


Table 1.8. All Colleges Headcount by Prior Education Level

| | Fall 07 | | Fall 08 | | Fall 09 | | Fall 10 | | Fall 11 | | % Change Fall 07-11 | All Colleges Average Fall 07-11 |
|--|---------------|-------------|---------------|-------------|---------------|-------------|---------------|-------------|---------------|-------------|---------------------|---------------------------------|
| Adult School | 94 | 0% | 123 | 0% | 128 | 0% | 128 | 0% | 95 | 0% | 1% | 0% |
| Associate Degree | 2,436 | 5% | 2,384 | 5% | 2,365 | 5% | 2,335 | 5% | 2,128 | 5% | -13% | 5% |
| Bachelors Degree or Higher | 5,421 | 12% | 5,750 | 12% | 5,507 | 12% | 5,351 | 11% | 4,985 | 11% | -8% | 11% |
| Certification of Calif. HS Proficiency | 304 | 1% | 347 | 1% | 351 | 1% | 360 | 1% | 351 | 1% | 15% | 1% |
| Foreign HS Diploma | 2,471 | 5% | 2,371 | 5% | 2,420 | 5% | 2,516 | 5% | 2,641 | 6% | 7% | 5% |
| GED/HS Certificate | 2,162 | 5% | 2,203 | 5% | 2,349 | 5% | 2,453 | 5% | 2,414 | 5% | 12% | 5% |
| HS Diploma | 31,082 | 67% | 31,416 | 66% | 31,777 | 67% | 33,368 | 68% | 32,788 | 70% | 5% | 68% |
| Not a Grad/Not Enrolled in HS | 835 | 2% | 826 | 2% | 845 | 2% | 864 | 2% | 762 | 2% | -9% | 2% |
| Special Admit/K-12 | 1,879 | 4% | 2,113 | 4% | 1,903 | 4% | 1,696 | 3% | 370 | 1% | -80% | 3% |
| Unreported | 43 | 0% | 15 | 0% | 0 | 0% | 0 | 0% | 0 | 0% | -100% | 0% |
| Total | 46,727 | 100% | 47,548 | 100% | 47,645 | 100% | 49,071 | 100% | 46,534 | 100% | -0% | 100% |

Source: SDCCD Information System

SDCCD Fact Book 2012

Headcount by Service Area of Residence: Between Fall 2007 and Fall 2011, on average, 37% of the general student population for all colleges in the district resided within the City College service area, 23% of the general student population for all colleges in the district resided within the Mesa College service area, and 10% of the general student population for all colleges in the district resided within the Miramar College service area. Twenty-nine percent of students lived outside of the districtwide service area. Twenty-nine percent of students lived outside of the districtwide service area.

Figure 1.9. SDCCD Headcount by Service Area of Residence

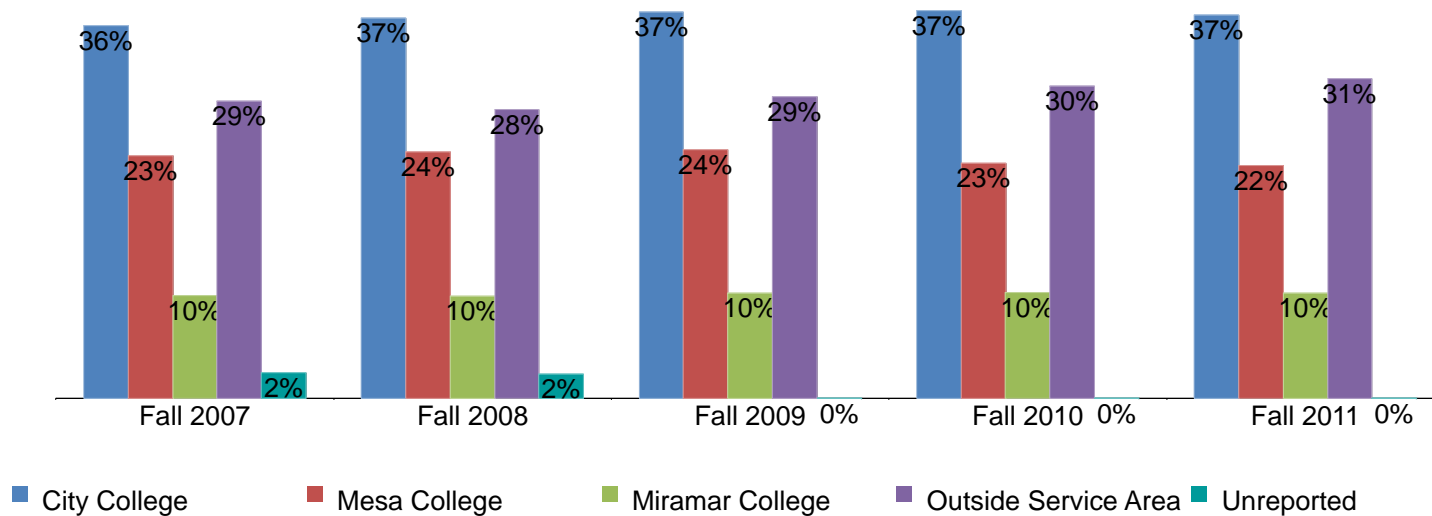


Table 1.9. SDCCD Headcount by Service Area of Residence

| | Fall 07 | | Fall 08 | | Fall 09 | | Fall 10 | | Fall 11 | | % Change Fall 07-11 | Districtwide Average Fall 07-11 |
|----------------------|---------------|-------------|---------------|-------------|---------------|-------------|---------------|-------------|---------------|-------------|---------------------|---------------------------------|
| City College | 29,697 | 36% | 30,785 | 37% | 29,819 | 37% | 29,725 | 37% | 27,618 | 37% | -7% | 37% |
| Mesa College | 19,303 | 23% | 19,941 | 24% | 19,180 | 24% | 18,021 | 23% | 16,779 | 22% | -13% | 23% |
| Miramar College | 8,155 | 10% | 8,222 | 10% | 8,097 | 10% | 8,088 | 10% | 7,542 | 10% | -8% | 10% |
| Outside Service Area | 23,626 | 29% | 23,341 | 28% | 23,272 | 29% | 23,968 | 30% | 23,064 | 31% | -2% | 29% |
| Unreported | 2,058 | 2% | 1,916 | 2% | 0 | 0% | 0 | 0% | 0 | 0% | -100% | 1% |
| Total | 82,839 | 100% | 84,205 | 100% | 80,368 | 100% | 79,802 | 100% | 75,003 | 100% | -9% | 100% |

Source: SDCCD Information System

SDCCD Fact Book 2012

Headcount by First Generation: Between Fall 2007 and Fall 2011, on average, approximately one-quarter of the students reported being first generation college students (27%). First generation students displayed a 12% increase in headcount, while students who reported they were not first generation decreased 4% between Fall 2007 and Fall 2011.

Figure 1.10. All Colleges Headcount by First Generation

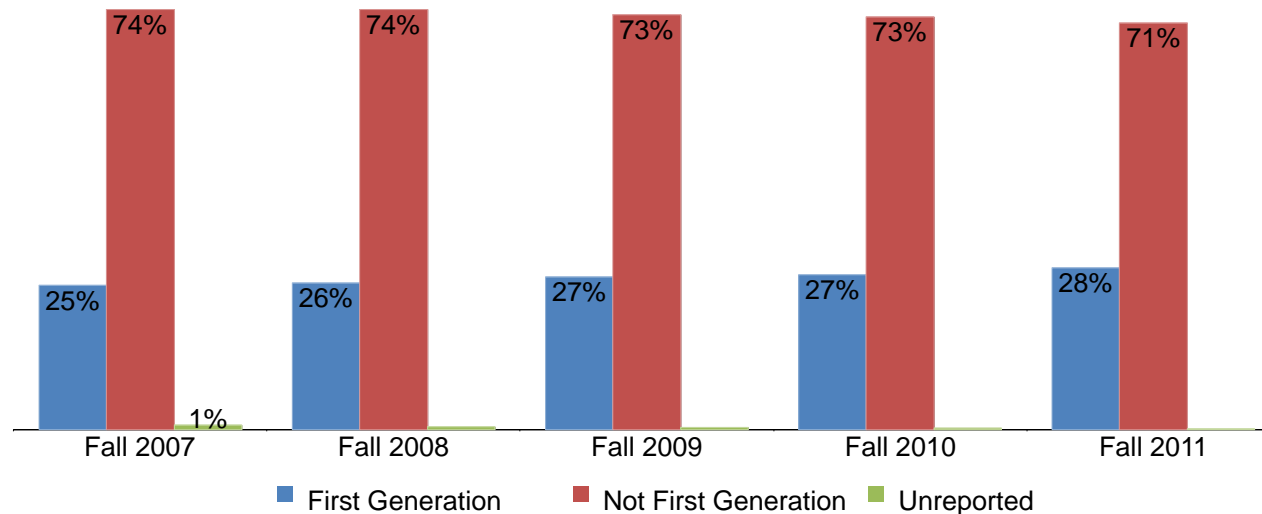


Table 1.10. All Colleges Headcount by First Generation

| | Fall 07 | | Fall 08 | | Fall 09 | | Fall 10 | | Fall 11 | | % Change Fall 07-11 | All Colleges Average Fall 07-11 |
|----------------------|---------------|-------------|---------------|-------------|---------------|-------------|---------------|-------------|---------------|-------------|---------------------|---------------------------------|
| First Generation | 11,829 | 25% | 12,217 | 26% | 12,749 | 27% | 13,362 | 27% | 13,237 | 28% | 12% | 27% |
| Not First Generation | 34,530 | 74% | 35,117 | 74% | 34,757 | 73% | 35,618 | 73% | 33,227 | 71% | -4% | 73% |
| Unreported | 368 | 1% | 214 | 0% | 139 | 0% | 91 | 0% | 70 | 0% | -81% | 0% |
| Total | 46,727 | 100% | 47,548 | 100% | 47,645 | 100% | 49,071 | 100% | 46,534 | 100% | -0% | 100% |

Source: SDCCD Information System

SDCCD Fact Book 2012

Headcount by Income Level: Between Fall 2007 and Fall 2011, nearly one-quarter (23%) of the districtwide general student population reported making \$33,000 or more a year on average. The number of students who reported making between \$0 and 2,999 a year on average increased 13% between Fall 2007 and 2011. It should be noted that nearly one-fifth of the students did not report their income level. Consequently, the data may not be representative of the actual income level of students enrolled within the district.

Figure 1.11. SDCCD Headcount by Income Level

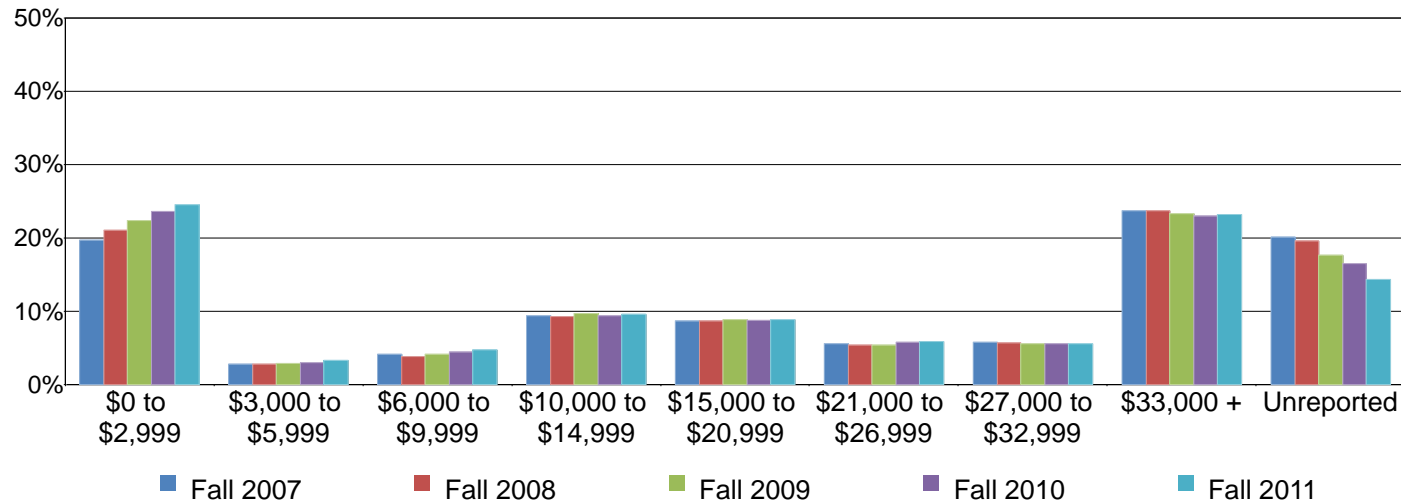


Table 1.11. SDCCD Headcount by Income Level

| | Fall 07 | | Fall 08 | | Fall 09 | | Fall 10 | | Fall 11 | | % Change Fall 07-11 | Districtwide Average Fall 07-11 |
|----------------------|---------------|-------------|---------------|-------------|---------------|-------------|---------------|-------------|---------------|-------------|---------------------|---------------------------------|
| \$0 to \$2,999 | 16,296 | 20% | 17,731 | 21% | 17,959 | 22% | 18,832 | 24% | 18,423 | 25% | 13% | 22% |
| \$3,000 to \$5,999 | 2,344 | 3% | 2,325 | 3% | 2,340 | 3% | 2,420 | 3% | 2,478 | 3% | 6% | 3% |
| \$6,000 to \$9,999 | 3,437 | 4% | 3,255 | 4% | 3,334 | 4% | 3,514 | 4% | 3,570 | 5% | 4% | 4% |
| \$10,000 to \$14,999 | 7,811 | 9% | 7,844 | 9% | 7,812 | 10% | 7,474 | 9% | 7,196 | 10% | -8% | 9% |
| \$15,000 to \$20,999 | 7,201 | 9% | 7,290 | 9% | 7,149 | 9% | 6,987 | 9% | 6,654 | 9% | -8% | 9% |
| \$21,000 to \$26,999 | 4,637 | 6% | 4,545 | 5% | 4,358 | 5% | 4,597 | 6% | 4,404 | 6% | -5% | 6% |
| \$27,000 to \$32,999 | 4,834 | 6% | 4,816 | 6% | 4,466 | 6% | 4,420 | 6% | 4,175 | 6% | -14% | 6% |
| \$33,000 + | 19,659 | 24% | 19,944 | 24% | 18,747 | 23% | 18,368 | 23% | 17,371 | 23% | -12% | 23% |
| Unreported | 16,620 | 20% | 16,455 | 20% | 14,203 | 18% | 13,190 | 17% | 10,732 | 14% | -35% | 18% |
| Total | 82,839 | 100% | 84,205 | 100% | 80,368 | 100% | 79,802 | 100% | 75,003 | 100% | -9% | 100% |

Source: SDCCD Information System

SDCCD Fact Book 2012

Headcount by Disability Support Programs and Services (DSPS): On average, 3% of the general student population for all colleges in the district received disability support services between Fall 2007 and Fall 2011. Moreover, the number of students who received disability support services increased 31%, from 1,144 in Fall 2007 to 1,496 in Fall 2011.

Figure 1.12. All Colleges Headcount by Disability Support Programs and Services (DSPS)

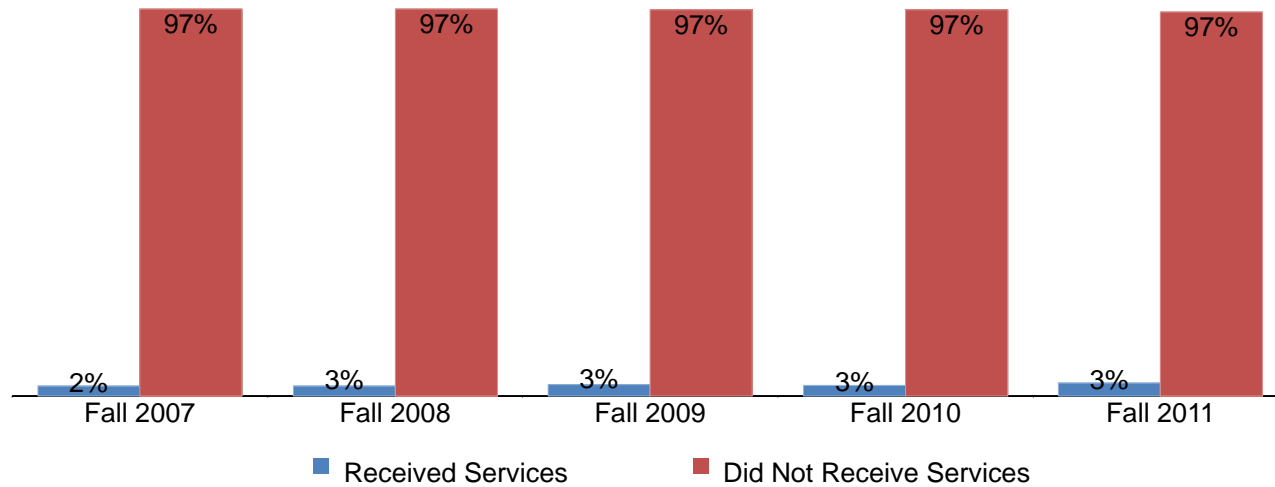


Figure 1.12. All Colleges Headcount by Disability Support Programs and Services (DSPS)

| | Fall 07 | | Fall 08 | | Fall 09 | | Fall 10 | | Fall 11 | | % Change Fall 07-11 | All Colleges Average Fall 07-11 |
|--------------------------|---------------|-------------|---------------|-------------|---------------|-------------|---------------|-------------|---------------|-------------|---------------------|---------------------------------|
| Received Services | 1,144 | 2% | 1,196 | 3% | 1,316 | 3% | 1,328 | 3% | 1,496 | 3% | 31% | 3% |
| Did Not Receive Services | 45,540 | 97% | 46,337 | 97% | 46,329 | 97% | 47,743 | 97% | 45,038 | 97% | -1% | 97% |
| Unreported | 43 | 0% | 15 | 0% | 0 | 0% | 0 | 0% | 0 | 0% | -100% | 0% |
| Total | 46,727 | 100% | 47,548 | 100% | 47,645 | 100% | 49,071 | 100% | 46,534 | 100% | -0% | 100% |

Source: SDCCD Information System

SDCCD Fact Book 2012

Headcount by Extended Opportunity Programs and Services (EOPS): On average, 3% of the general student population for all colleges in the district received EOPS services between Fall 2007 and Fall 2011. There was a 4% increase in the number of students who received EOPS services from Fall 2007 to Fall 2011.

Figure 1.13. All Colleges Headcount by Extended Opportunity Programs and Services (EOPS)

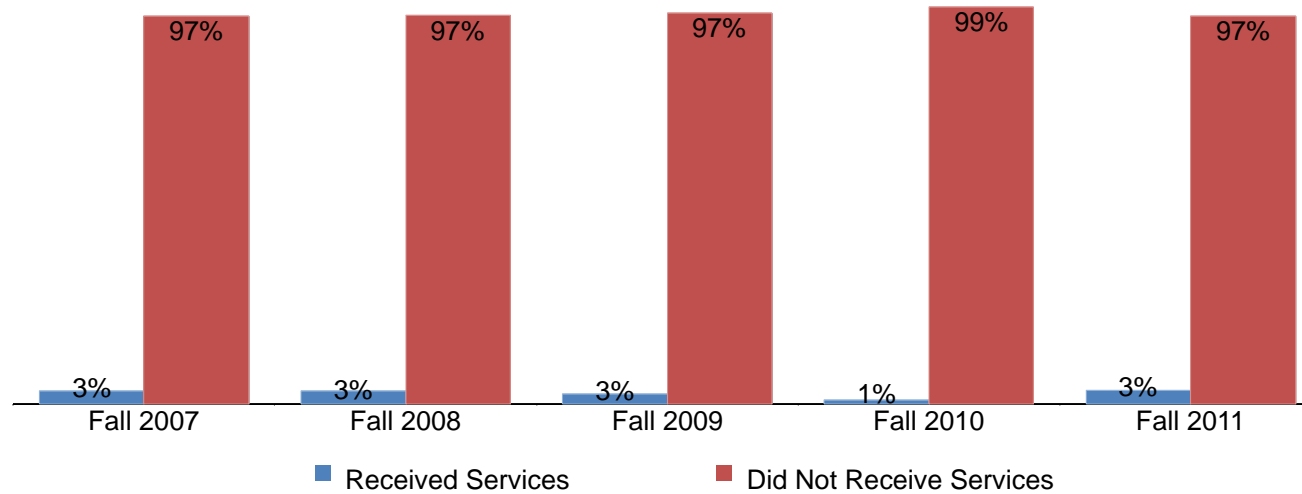


Table 1.13. All Colleges Headcount by Extended Opportunity Programs and Services (EOPS)

| | Fall 07 | | Fall 08 | | Fall 09 | | Fall 10 | | Fall 11 | | % Change Fall 07-11 | All Colleges Average Fall 07-11 |
|--------------------------|---------------|-------------|---------------|-------------|---------------|-------------|---------------|-------------|---------------|-------------|---------------------|---------------------------------|
| Received Services | 1,519 | 3% | 1,507 | 3% | 1,201 | 3% | 504 | 1% | 1,578 | 3% | 4% | 3% |
| Did Not Receive Services | 45,165 | 97% | 46,026 | 97% | 46,444 | 97% | 48,567 | 99% | 44,956 | 97% | -0% | 97% |
| Unreported | 43 | 0% | 15 | 0% | 0 | 0% | 0 | 0% | 0 | 0% | -100% | 0% |
| Total | 46,727 | 100% | 47,548 | 100% | 47,645 | 100% | 49,071 | 100% | 46,534 | 100% | -0% | 100% |

Source: SDCCD Information System

SDCCD Fact Book 2012

Headcount by Day, Evening, & Online Status: On average, 53% of the districtwide student population takes day courses exclusively. Approximately one in five students (19%) take evening courses exclusively. Student that take both on-campus and online courses have increased 51%, from 4,932 in Fall 2007 to 7,445 in Fall 2011. However, students that take evening courses exclusively decreased 31%, from 18,449 Fall 2007 to 12,653 in Fall 2011.

Figure 1.14. SDCCD Headcount by Day, Evening, & Online Status

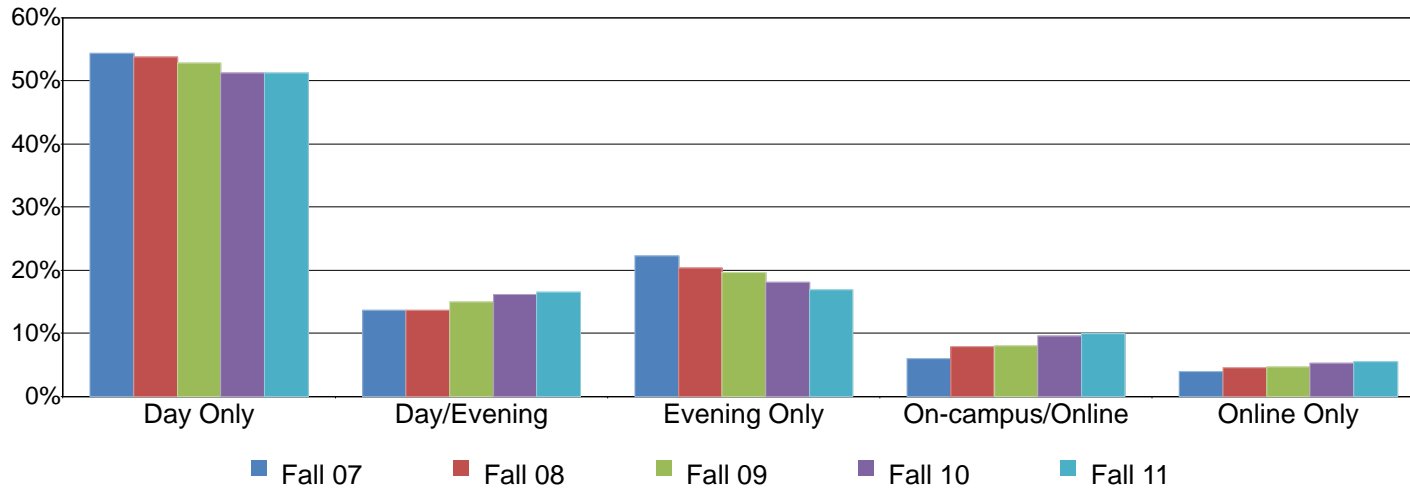


Table 1.14. SDCCD Headcount by Day, Evening, & Online Status

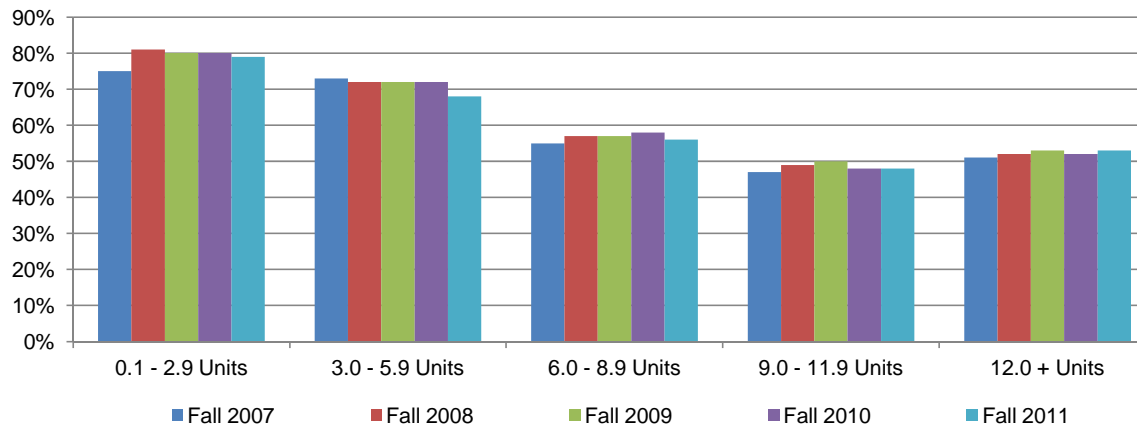
| | Fall 07 | | Fall 08 | | Fall 09 | | Fall 10 | | Fall 11 | | % Change Fall 07-11 | Districtwide Average Fall 07-11 |
|------------------|---------------|-------------|---------------|-------------|---------------|-------------|---------------|-------------|---------------|-------------|---------------------|---------------------------------|
| Day Only | 44,976 | 54% | 45,199 | 54% | 42,450 | 53% | 40,825 | 51% | 38,407 | 51% | -15% | 53% |
| Day/Evening | 11,233 | 14% | 11,494 | 14% | 12,043 | 15% | 12,839 | 16% | 12,390 | 17% | 10% | 15% |
| Evening Only | 18,449 | 22% | 17,104 | 20% | 15,731 | 20% | 14,402 | 18% | 12,653 | 17% | -31% | 19% |
| On-campus/Online | 4,932 | 6% | 6,644 | 8% | 6,379 | 8% | 7,592 | 10% | 7,445 | 10% | 51% | 8% |
| Online Only | 3,249 | 4% | 3,765 | 4% | 3,765 | 5% | 4,144 | 5% | 4,107 | 5% | 26% | 5% |
| Total | 82,839 | 100% | 84,206 | 100% | 80,368 | 100% | 79,802 | 100% | 75,002 | 100% | -9% | 100% |

Source: SDCCD Information System

SDCCD Fact Book 2012

Headcount by Units Attempted by Units Earned: Table 1.15 shows the interplay between units attempted (in rows) and units earned (in columns). The greatest proportion of students who attempted and earned units were those in the 0.1-2.9 unit range on average (79%). The least proportion of students who attempted and earned units were those in the 9.0-11.9 unit range on average (49%). Students who attempted and earned between 9.0-11.9 units increased 26%, while students who attempted and earned between 3.0 and 5.9 units decreased 26% between Fall 2007 and Fall 2011.

Figure 1.15. All Colleges Headcount by Units Attempted by Units Earned



SDCCD Fact Book 2012

Table 1.15. All Colleges Headcount by Units Attempted by Units Earned

| | | Units Earned | | | | | | |
|----------------------------|------------------|------------------|-----------------|-----------------|-----------------|------------------|--------------|------------|
| | | 0 Units | 0.1 - 2.9 Units | 3.0 - 5.9 Units | 6.0 - 8.9 Units | 9.0 - 11.9 Units | 12.0 + Units | |
| Units Attempted | Fall 2007 | 0.1 - 2.9 Units | 25% | 75% | | | | |
| | | 3.0 - 5.9 Units | 26% | 1% | 73% | | | |
| | | 6.0 - 8.9 Units | 21% | 2% | 23% | 55% | | |
| | | 9.0 - 11.9 Units | 16% | 1% | 14% | 21% | 47% | |
| | | 12.0 + Units | 9% | 1% | 8% | 12% | 19% | 51% |
| | Fall 2008 | 0.1 - 2.9 Units | 19% | 81% | | | | |
| | | 3.0 - 5.9 Units | 27% | 1% | 72% | | | |
| | | 6.0 - 8.9 Units | 20% | 2% | 22% | 57% | | |
| | | 9.0 - 11.9 Units | 15% | 2% | 13% | 20% | 49% | |
| | | 12.0 + Units | 8% | 1% | 8% | 12% | 18% | 52% |
| | Fall 2009 | 0.1 - 2.9 Units | 20% | 80% | | | | |
| | | 3.0 - 5.9 Units | 26% | 1% | 72% | | | |
| | | 6.0 - 8.9 Units | 19% | 2% | 22% | 57% | | |
| | | 9.0 - 11.9 Units | 14% | 1% | 14% | 20% | 50% | |
| | | 12.0 + Units | 7% | 1% | 8% | 12% | 18% | 53% |
| | Fall 2010 | 0.1 - 2.9 Units | 20% | 80% | | | | |
| | | 3.0 - 5.9 Units | 27% | 2% | 72% | | | |
| | | 6.0 - 8.9 Units | 19% | 2% | 21% | 58% | | |
| | | 9.0 - 11.9 Units | 16% | 2% | 14% | 21% | 48% | |
| | | 12.0 + Units | 8% | 1% | 8% | 12% | 18% | 52% |
| Fall 2011 | 0.1 - 2.9 Units | 21% | 79% | | | | | |
| | 3.0 - 5.9 Units | 30% | 2% | 68% | | | | |
| | 6.0 - 8.9 Units | 21% | 2% | 21% | 56% | | | |
| | 9.0 - 11.9 Units | 16% | 2% | 14% | 20% | 48% | | |
| | 12.0 + Units | 8% | 1% | 7% | 12% | 18% | 53% | |
| % Change Fall 07-11 | | -- | -2% | -26% | -1% | 26% | 21% | |
| College Average Fall 07-11 | | -- | 79% | 71% | 56% | 49% | 52% | |

Source: SDCCD Information System

Note. Percent change and average were based on counts.

Section II
Term Persistence Rates

SDCCD Fact Book 2012

This section of the Fact Book contains information on first-time to college student term persistence rates. For purposes of this report, term persistence rate is the measure of first-time to college students who were enrolled in a fall term as of census (eliminating drops and never attends prior to census) and who completed the term with a grade of A, B, C, P (Pass), D, F, I, NP (Not-Pass), or RD (Report Delayed), then were enrolled as of census in the subsequent spring term and received a grade notation for that term. Note that SDSU and UCSD students and academy classes are excluded from analyses. The information in this section includes five years of data and is reported as follows:

- 1) Overall
- 2) Gender
- 3) Ethnicity
- 4) Age

SDCCD Fact Book 2012

Overall Term Persistence: The average term persistence rate of first-time students at the colleges was 72% between the Fall 2007 and Fall 2011 cohorts. Persistence rates peaked to a high of 78% in the Fall 2011 and dipped to a low of 66% in Fall 2007. Overall, term persistence rates increased 12%, from 66% in the Fall 2007 to 78% in Fall 2011.

Figure 2.1. All Colleges First-Time Student Overall Term Persistence

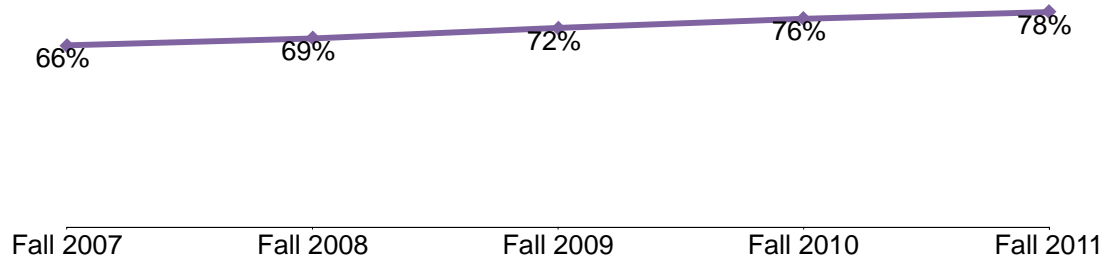


Table 2.1. All Colleges First-Time Student Overall Term Persistence

| Cohort | Fall | Spring | Persistence |
|----------------|-------|--------|-------------|
| Fall 2007 | 3,830 | 2,527 | 66% |
| Fall 2008 | 3,845 | 2,636 | 69% |
| Fall 2009 | 3,963 | 2,863 | 72% |
| Fall 2010 | 4,535 | 3,436 | 76% |
| Fall 2011 | 4,599 | 3,597 | 78% |
| Average | | | 72% |

Source: SDCCD Information System

Note 1. SDSU and UCSD students are excluded.

Note 2. Academy courses are excluded.

SDCCD Fact Book 2012

Term Persistence by Gender: On average, term persistence rates of female students (75%) were higher than their male student counterpart (71%) between the Fall 2007 and Fall 2011 cohorts. Persistence rates increased for both female and male students between the Fall 2007 and Fall 2011 cohorts (12% & 13%, respectively).

Figure 2.2. All Colleges First-Time Student Term Persistence by Gender

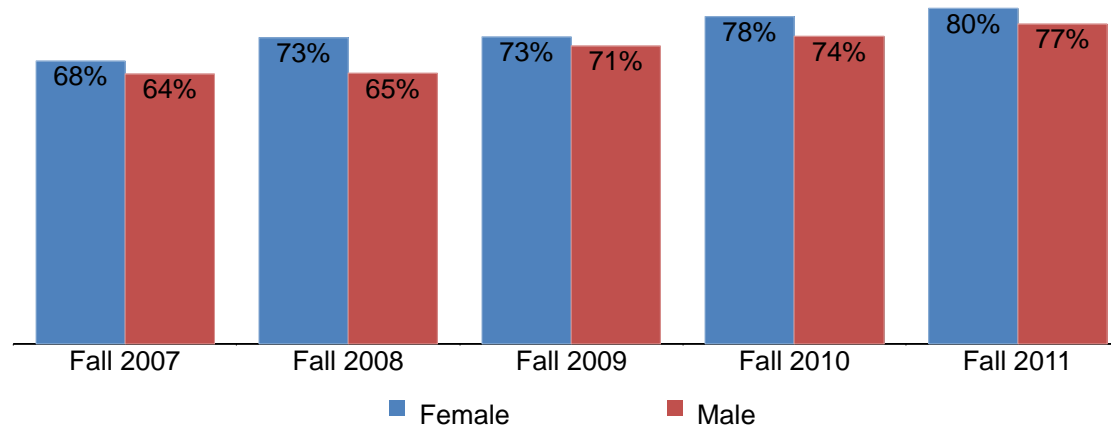


Table 2.2. All Colleges First-Time Student Term Persistence by Gender

| Cohort | Female | | | Male | | |
|----------------|--------|--------|-------------|-------|--------|-------------|
| | Fall | Spring | Persistence | Fall | Spring | Persistence |
| Fall 2007 | 1,786 | 1,209 | 68% | 2,041 | 1,316 | 64% |
| Fall 2008 | 1,737 | 1,272 | 73% | 2,107 | 1,364 | 65% |
| Fall 2009 | 1,833 | 1,347 | 73% | 2,130 | 1,516 | 71% |
| Fall 2010 | 2,074 | 1,623 | 78% | 2,461 | 1,813 | 74% |
| Fall 2011 | 2,068 | 1,660 | 80% | 2,531 | 1,937 | 77% |
| Average | | | 75% | | | 71% |

Source: SDCCD Information System

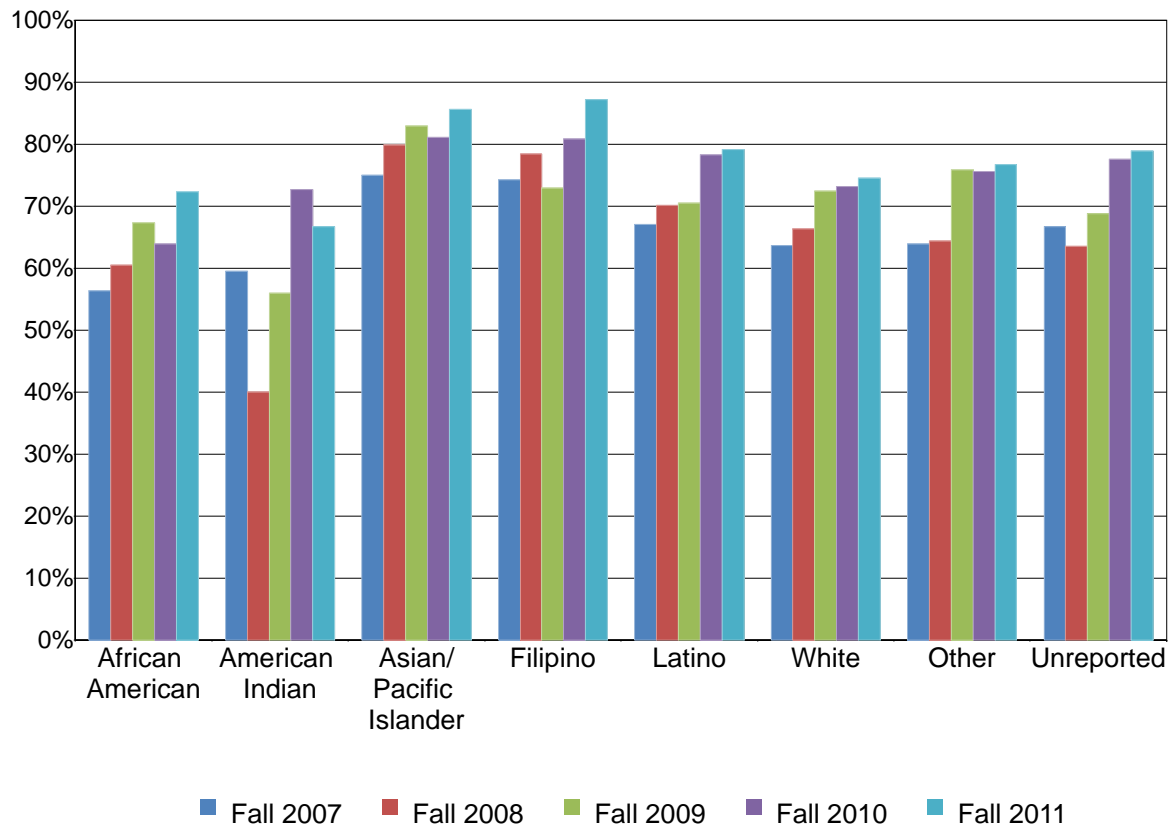
Note 1. SDSU and UCSD students are excluded.

Note 2. Academy courses are excluded.

SDCCD Fact Book 2012

Term Persistence by Ethnicity: The ethnic groups with the highest term persistence rates, on average, were Asian/Pacific Islander students (81%), Filipino students (79%), and Latino students (74%). Persistence rates peaked to a high of 87% for Filipino students in the Fall 2011 cohort, as well as for Asian/Pacific Islander students (86%). Persistence rates of African American students increased 16% between the Fall 2007 and Fall 2011 cohorts.

Figure 2.3. All Colleges First-Time Student Term Persistence by Ethnicity



SDCCD Fact Book 2012

Table 2.3. All Colleges First-Time Student Term Persistence by Ethnicity

| Cohort | African American | | | American Indian | | | Asian/Pacific Islander | | | Filipino | | |
|----------------|------------------|--------|-------------|-----------------|--------|-------------|------------------------|--------|-------------|----------|--------|-------------|
| | Fall | Spring | Persistence | Fall | Spring | Persistence | Fall | Spring | Persistence | Fall | Spring | Persistence |
| Fall 2007 | 364 | 205 | 56% | 42 | 25 | 60% | 425 | 319 | 75% | 214 | 159 | 74% |
| Fall 2008 | 357 | 216 | 61% | 35 | 14 | 40% | 399 | 319 | 80% | 218 | 171 | 78% |
| Fall 2009 | 419 | 282 | 67% | 25 | 14 | 56% | 423 | 351 | 83% | 214 | 156 | 73% |
| Fall 2010 | 405 | 259 | 64% | 22 | 16 | 73% | 392 | 318 | 81% | 225 | 182 | 81% |
| Fall 2011 | 365 | 264 | 72% | 15 | 10 | 67% | 454 | 389 | 86% | 212 | 185 | 87% |
| Average | | | 64% | | | 57% | | | 81% | | | 79% |

| Cohort | Latino | | | White | | | Other | | | Unreported | | |
|----------------|--------|--------|-------------|-------|--------|-------------|-------|--------|-------------|------------|--------|-------------|
| | Fall | Spring | Persistence | Fall | Spring | Persistence | Fall | Spring | Persistence | Fall | Spring | Persistence |
| Fall 2007 | 1,115 | 748 | 67% | 1,315 | 838 | 64% | 136 | 87 | 64% | 219 | 146 | 67% |
| Fall 2008 | 1,135 | 796 | 70% | 1,347 | 894 | 66% | 104 | 67 | 64% | 250 | 159 | 64% |
| Fall 2009 | 1,331 | 939 | 71% | 1,190 | 862 | 72% | 153 | 116 | 76% | 208 | 143 | 69% |
| Fall 2010 | 1,881 | 1,473 | 78% | 1,281 | 938 | 73% | 271 | 205 | 76% | 58 | 45 | 78% |
| Fall 2011 | 1,953 | 1,547 | 79% | 1,238 | 923 | 75% | 305 | 234 | 77% | 57 | 45 | 79% |
| Average | | | 74% | | | 70% | | | 73% | | | 68% |

Source: SDCCD Information System

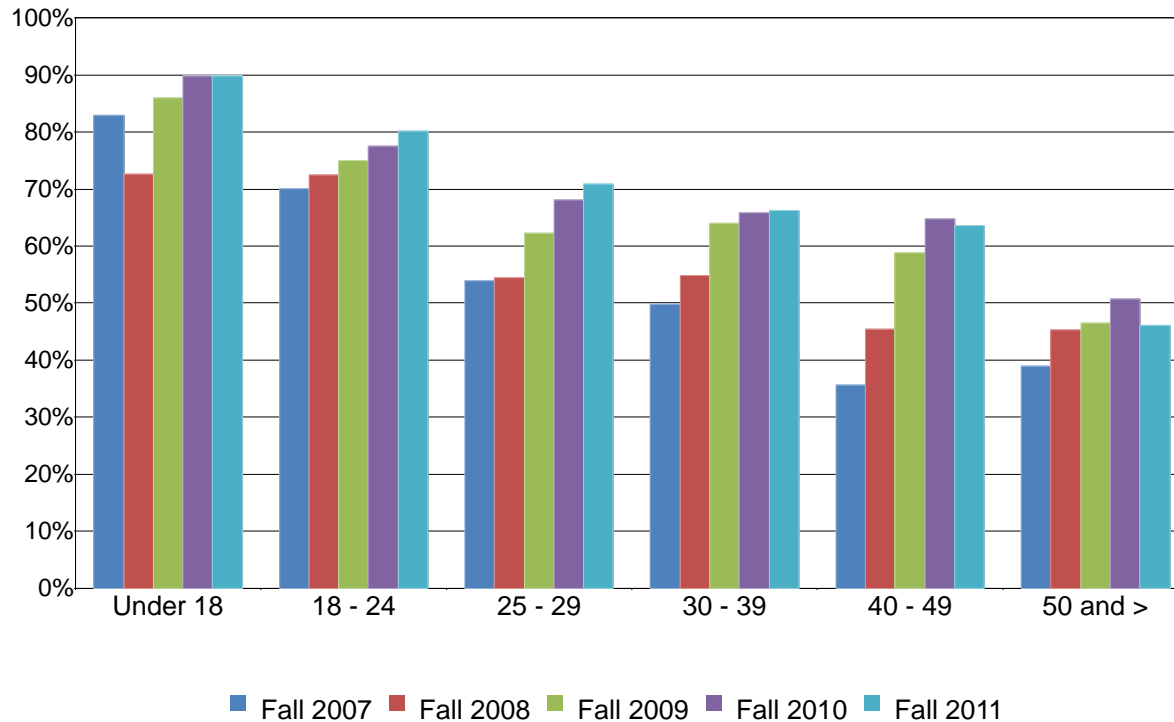
Note 1. SDSU and UCSD students are excluded.

Note 2. Academy courses are excluded.

SDCCD Fact Book 2012

Term Persistence by Age: A general trend among the Fall 2007 to the Fall 2011 cohorts showed as age increased, term persistence rates decreased. However, persistence rates increased by 28% between the Fall 2007 and Fall 2011 cohorts for students ages 40-49. Persistence rates for students ages 25-29 increased 17% between the Fall 2007 and Fall cohorts 2011.

Figure 2.4. All Colleges First-Time Student Term Persistence by Age



SDCCD Fact Book 2012

Table 2.4. All Colleges First-Time Student Term Persistence by Age

| Cohort | Under 18 | | | 18 - 24 | | | 25 - 29 | | |
|----------------|----------|--------|-------------|---------|--------|-------------|---------|--------|-------------|
| | Fall | Spring | Persistence | Fall | Spring | Persistence | Fall | Spring | Persistence |
| Fall 2007 | 41 | 34 | 83% | 3,060 | 2,144 | 70% | 299 | 161 | 54% |
| Fall 2008 | 51 | 37 | 73% | 3,058 | 2,215 | 72% | 303 | 165 | 54% |
| Fall 2009 | 64 | 55 | 86% | 3,094 | 2,320 | 75% | 350 | 218 | 62% |
| Fall 2010 | 69 | 62 | 90% | 3,741 | 2,900 | 78% | 317 | 216 | 68% |
| Fall 2011 | 59 | 53 | 90% | 3,860 | 3,093 | 80% | 305 | 216 | 71% |
| Average | | | 85% | | | 75% | | | 62% |

| Cohort | 30 - 39 | | | 40 - 49 | | | 50 and > | | |
|----------------|---------|--------|-------------|---------|--------|-------------|----------|--------|-------------|
| | Fall | Spring | Persistence | Fall | Spring | Persistence | Fall | Spring | Persistence |
| Fall 2007 | 229 | 114 | 50% | 129 | 46 | 36% | 72 | 28 | 39% |
| Fall 2008 | 239 | 131 | 55% | 119 | 54 | 45% | 75 | 34 | 45% |
| Fall 2009 | 255 | 163 | 64% | 114 | 67 | 59% | 86 | 40 | 47% |
| Fall 2010 | 240 | 158 | 66% | 105 | 68 | 65% | 63 | 32 | 51% |
| Fall 2011 | 216 | 143 | 66% | 107 | 68 | 64% | 52 | 24 | 46% |
| Average | | | 60% | | | 53% | | | 45% |

Source: SDCCD Information System

Note 1. SDSU and UCSD students are excluded.

Note 2. Academy courses are excluded.

Section III
Student Outcomes

SDCCD Fact Book 2012

This section of the Fact Book contains information on various student outcomes which may be considered indirect assessments of student learning. The outcomes included in this section are: 1) Annual Successful Course Completion Rates, 2) Annual Retention Rates, 3) Annual GPA, 4) Annual Awards Conferred, and 5) Annual Transfer Volume. All of the information in this section includes five years of data by gender, age, and ethnicity. The following describes in detail each of the outcomes listed.

1) Successful Course Completion Rates. The first outcome reported in this section is successful course completion, or student success rate. For purposes of this report, the success rate is the percentage of students who completed a course with a grade of A, B, C, or P out of total enrollments as of census. *Note: Tutoring, non-credit, and cancelled classes are excluded.*

2) Retention Rates. The second outcome reported in this section is retention rate. For purposes of this report, the retention rate is the percentage of students who completed a course with a grade of A, B, C, D, F, P, NP, I, or RD out of total enrollments as of census. *Note: Tutoring and cancelled classes are excluded.*

3) Annual GPA. The third outcome reported in this section is annual GPA. For purposes of this report, the annual GPA is the cumulative term grade point average of all courses taken for a grade in one academic year.

4) Annual Awards Conferred. The fourth outcome reported in this section is the annual awards conferred. For purposes of this report, the annual awards conferred are the total number of associate degrees and certificates awarded in a single academic year (summer, fall, and spring). *Note: Annual awards conferred that are reported in this Fact Book are considered preliminary data. Please see the upcoming Awards Conferred Supplement report for final annual awards conferred numbers.*

5) Annual Transfer Volume. The last outcome reported in this section is the number of students who transfer annually. For the purposes of this report, the annual transfer volume represents the total number of students who transferred to a 4-year institution and were enrolled at an SDCCD college at any time within three semesters prior to transferring (including stop outs). The student must also have completed 12 or more transferrable units within six years prior to transferring to a 4-year institution. *Note: Transfer volume that is reported in this Fact Book is considered preliminary data. Please see the upcoming Spring 2013 SDCCD Transfer Report: A Longitudinal Perspective for final transfer volume numbers.*

SDCCD Fact Book 2012

Overall Success Rates: The annual success rates of all colleges in the district remained relatively stable between 2007/08 and 2011/12, with an average of 67%.

Figure 3.1. All Colleges Overall Success Rates

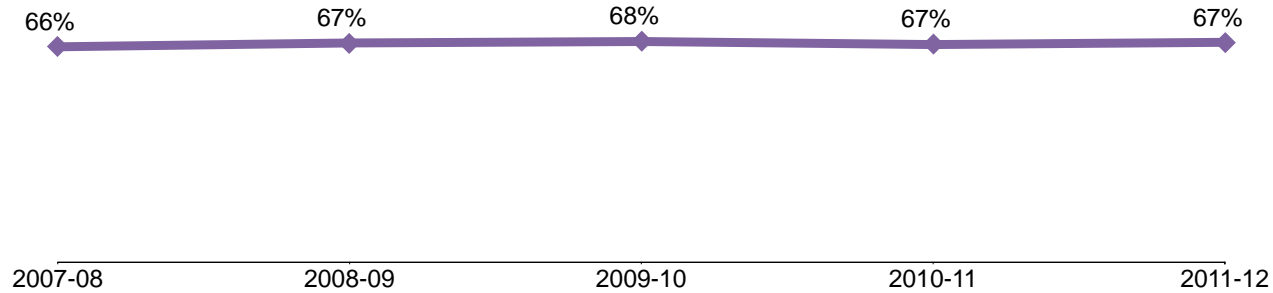


Table 3.1. All Colleges Overall Success Rates

| | 2007-08 | 2008-09 | 2009-10 | 2010-11 | 2011-12 | % Change 07/08 - 11/12 | All Colleges Average 07/08 - 11/12 |
|----------------|---------|---------|---------|---------|---------|---------------------------|---------------------------------------|
| Average | 66% | 67% | 68% | 67% | 67% | 1% | 67% |

Source: SDCCD Information System

Note. Tutoring, non-credit, and cancelled classes are excluded.

SDCCD Fact Book 2012

Success Rates by Gender: The average success rate of female students (68%) was comparable to the average success rate of their male student counterpart (67%) between 2007/08 and 2011/12. The average success rate of female students was slightly higher than the average success rate of the general student population for all colleges in the district (67%), while the average success rate of male students was the same as the all colleges in the district average.

Figure 3.2. All Colleges Success Rates by Gender

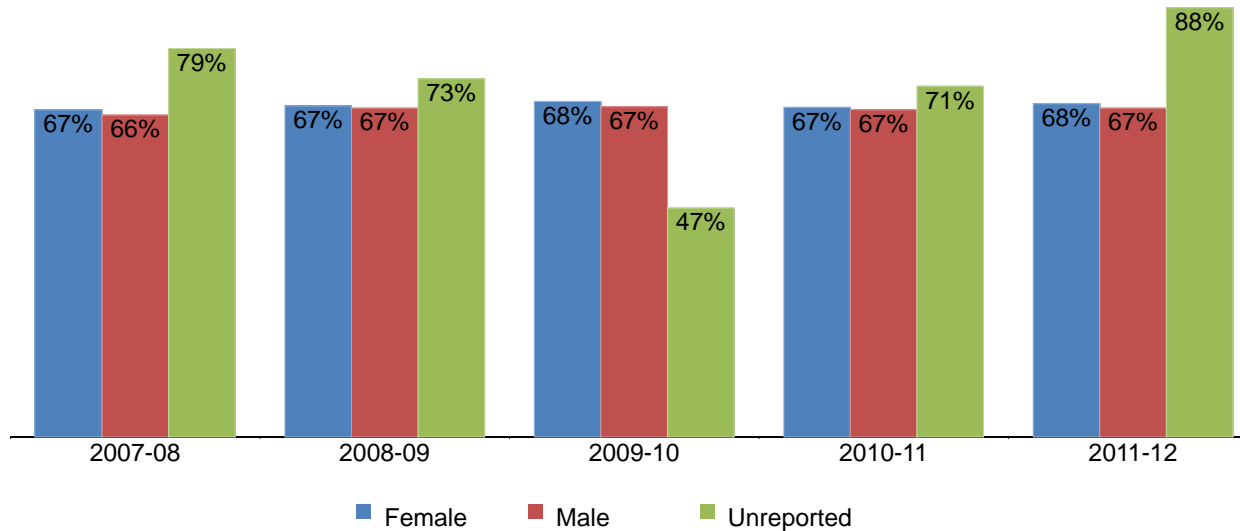


Table 3.2. All Colleges Success Rates by Gender

| | 2007-08 | 2008-09 | 2009-10 | 2010-11 | 2011-12 | % Change 07/08 - 11/12 | All Colleges Average 07/08 - 11/12 |
|----------------|------------|------------|------------|------------|------------|------------------------|------------------------------------|
| Female | 67% | 67% | 68% | 67% | 68% | 1% | 68% |
| Male | 66% | 67% | 67% | 67% | 67% | 2% | 67% |
| Unreported | 79% | 73% | 47% | 71% | 88% | 8% | 77% |
| Average | 66% | 67% | 68% | 67% | 67% | 1% | 67% |

Source: SDCCD Information System

Note. Tutoring, non-credit, and cancelled classes are excluded.

SDCCD Fact Book 2012

Success Rates by Ethnicity: On average, the ethnic groups with the highest success rates were both White and Asian/Pacific Islander students (72% each), followed by Filipino students (68%) between 2007/08 and 2011/12. The average success rates of African American, American Indian, and Latino were lower than the average success rate of the general student population of all colleges in the district (67%). The average success rates of White, Asian/Pacific Islander, and Filipino students exceeded or were comparable to the same average.

Figure 3.3. All Colleges Success Rates by Ethnicity

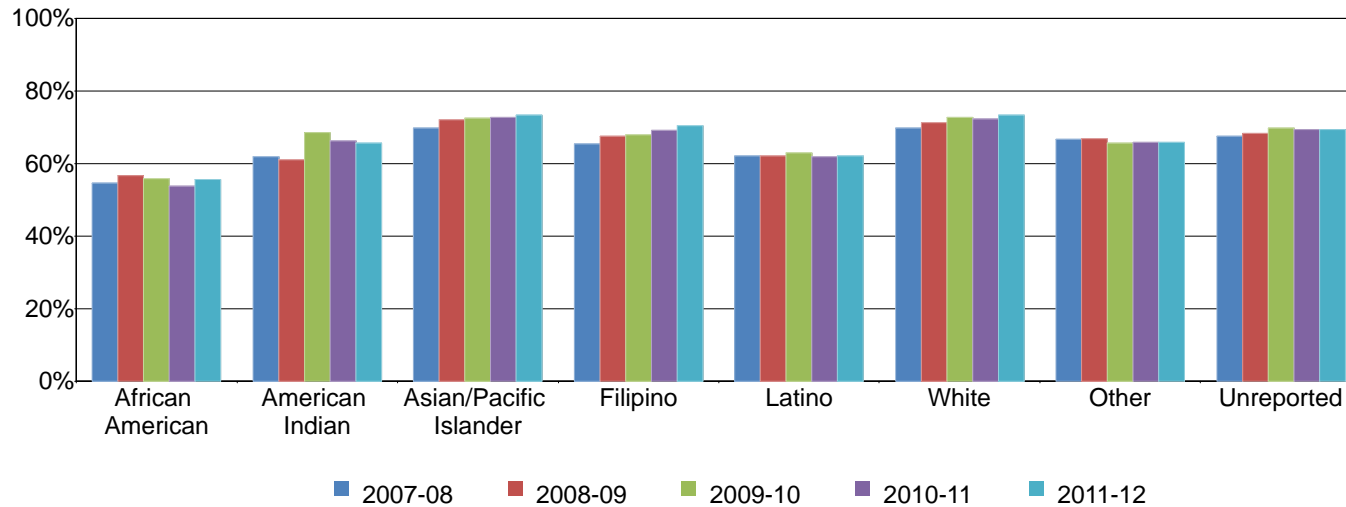


Table 3.3. All Colleges Success Rates by Ethnicity

| | 2007-08 | 2008-09 | 2009-10 | 2010-11 | 2011-12 | % Change 07/08 - 11/12 | All Colleges Average 07/08 - 11/12 |
|------------------------|------------|------------|------------|------------|------------|---------------------------|---------------------------------------|
| African American | 55% | 57% | 56% | 54% | 56% | 1% | 55% |
| American Indian | 62% | 61% | 69% | 66% | 66% | 4% | 65% |
| Asian/Pacific Islander | 70% | 72% | 73% | 73% | 73% | 3% | 72% |
| Filipino | 65% | 68% | 68% | 69% | 70% | 5% | 68% |
| Latino | 62% | 62% | 63% | 62% | 62% | 0% | 62% |
| White | 70% | 71% | 73% | 72% | 73% | 3% | 72% |
| Other | 67% | 67% | 66% | 66% | 66% | -1% | 66% |
| Unreported | 68% | 68% | 70% | 70% | 69% | 2% | 69% |
| Average | 66% | 67% | 68% | 67% | 67% | 1% | 67% |

Source: SDCCD Information System

Note. Tutoring, non-credit, and cancelled classes are excluded.

SDCCD Fact Book 2012

Success Rates by Age: With the exception of students who were under age 18, a general trend showed, on average, as age increased so did success rates. Students who were below 18 years old had the highest success rate (85%) on average. With the exception of students ages 18-24, the average success rates of all other age groups were higher compared to the average success rates of the general student population for all colleges in the district (67%).

Figure 3.4. All Colleges Success Rates by Age

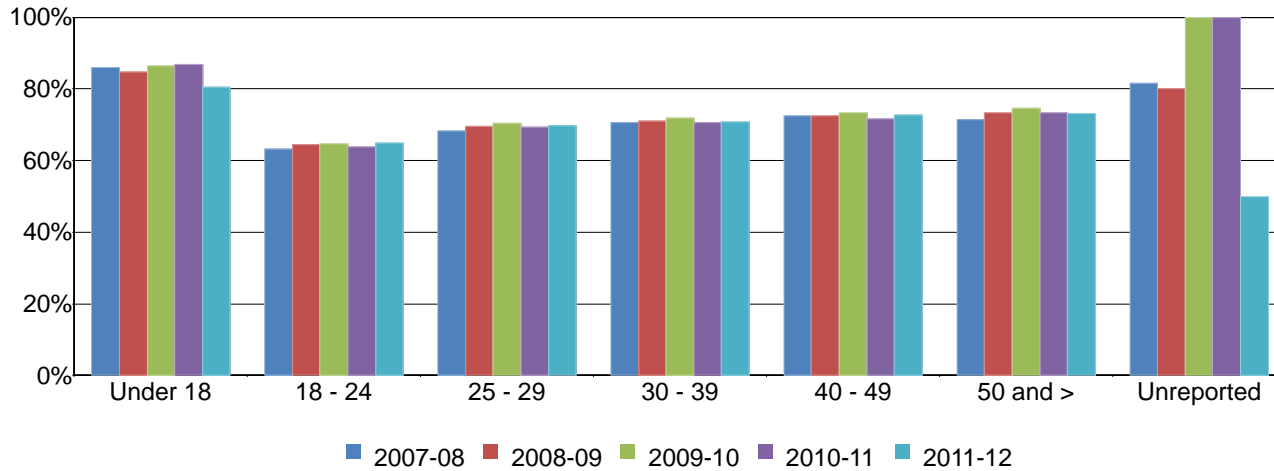


Table 3.4. All Colleges Success Rates by Age

| | 2007-08 | 2008-09 | 2009-10 | 2010-11 | 2011-12 | % Change 07/08 - 11/12 | All Colleges Average 07/08 - 11/12 |
|----------------|------------|------------|------------|------------|------------|---------------------------|---------------------------------------|
| Under 18 | 86% | 85% | 86% | 87% | 81% | -5% | 85% |
| 18 - 24 | 63% | 64% | 65% | 64% | 65% | 2% | 64% |
| 25 - 29 | 68% | 70% | 70% | 69% | 70% | 1% | 69% |
| 30 - 39 | 71% | 71% | 72% | 71% | 71% | 0% | 71% |
| 40 - 49 | 73% | 73% | 73% | 72% | 73% | 0% | 73% |
| 50 and > | 71% | 73% | 75% | 73% | 73% | 2% | 73% |
| Unreported | 81% | 80% | 100% | 100% | 50% | -31% | 81% |
| Average | 66% | 67% | 68% | 67% | 67% | 1% | 67% |

Source: SDCCD Information System

Note. Tutoring, non-credit, and cancelled classes are excluded.

SDCCD Fact Book 2012

Overall Retention Rates: The annual retention rates of all colleges in the district displayed a 3% increase, from 82% in 2007/08 to 84% in 2011/12, with an average of 84%.

Figure 3.5. All Colleges Overall Retention Rates

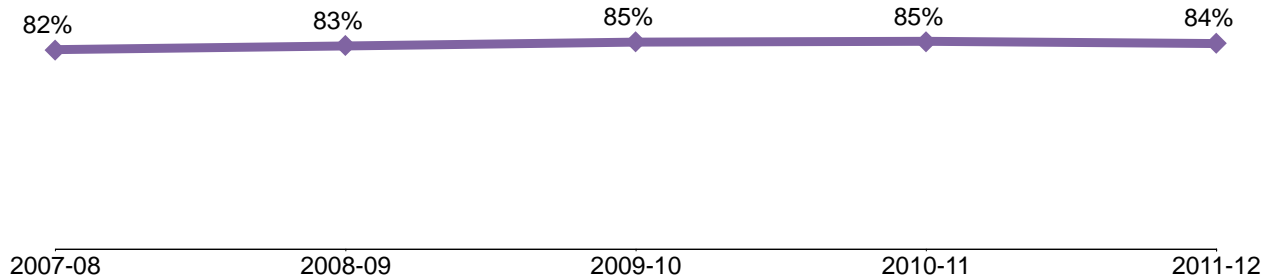


Table 3.5. All Colleges Overall Retention Rates

| | 2007-08 | 2008-09 | 2009-10 | 2010-11 | 2011-12 | % Change 07/08 - 11/12 | All Colleges Average 07/08 - 11/12 |
|----------------|---------|---------|---------|---------|---------|---------------------------|---------------------------------------|
| Average | 82% | 83% | 85% | 85% | 84% | 3% | 84% |

Source: SDCCD Information System

Note. Tutoring and cancelled classes are excluded.

SDCCD Fact Book 2012

Retention Rates by Gender: The average retention rate of female students (84%) was the same as the average retention rate of their male student counterpart (84%) between 2007/08 and 2011/12. The average retention rates of male and female student populations of all colleges in the district were the same as the general student population for all colleges in the district (84%).

Figure 3.6. All Colleges Retention Rates by Gender

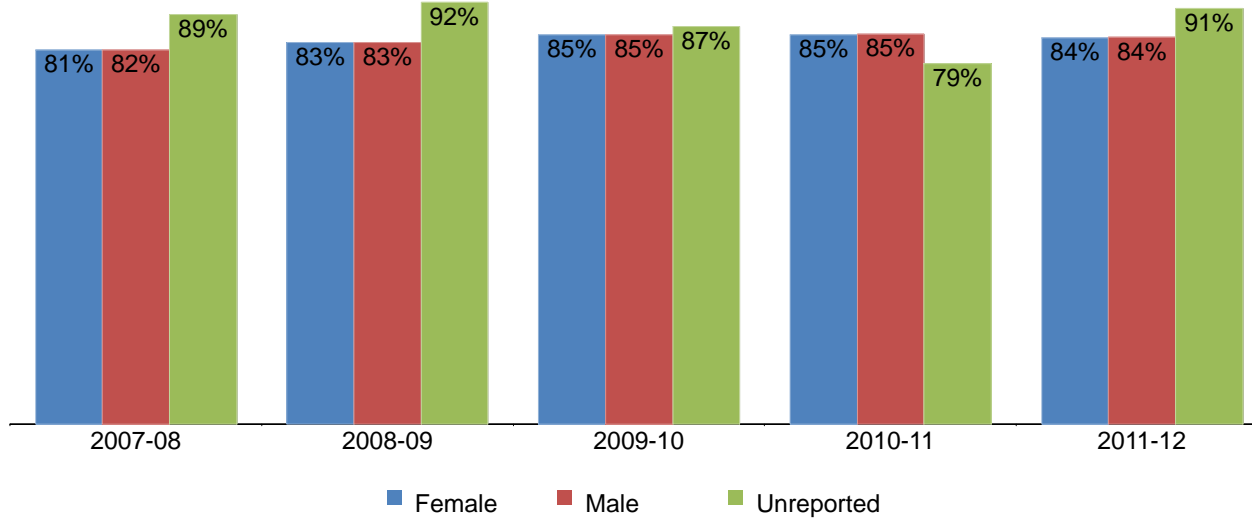


Table 3.6. All Colleges Retention Rates by Gender

| | 2007-08 | 2008-09 | 2009-10 | 2010-11 | 2011-12 | % Change 07/08 - 11/12 | All Colleges Average 07/08 - 11/12 |
|----------------|------------|------------|------------|------------|------------|---------------------------|---------------------------------------|
| Female | 81% | 83% | 85% | 85% | 84% | 3% | 84% |
| Male | 82% | 83% | 85% | 85% | 84% | 3% | 84% |
| Unreported | 89% | 92% | 87% | 79% | 91% | 1% | 89% |
| Average | 82% | 83% | 85% | 85% | 84% | 3% | 84% |

Source: SDCCD Information System

Note. Tutoring and cancelled classes are excluded.

SDCCD Fact Book 2012

Retention Rates by Ethnicity: Between 2007/08 and 2011/12, the ethnic groups with the highest retention rates, on average, were Asian/Pacific Islander students (86%), White students (85%), and both Filipino and students categorized as 'Other' ethnicities (84% each). The average retention rates of African American, American Indian, and Latino students were lower than the average retention rate of the general student population for all colleges in the district (84%). Furthermore, all ethnic groups showed an increase in retention rates between 2007/08 and 2011/12.

Figure 3.7. All Colleges Retention Rates by Ethnicity

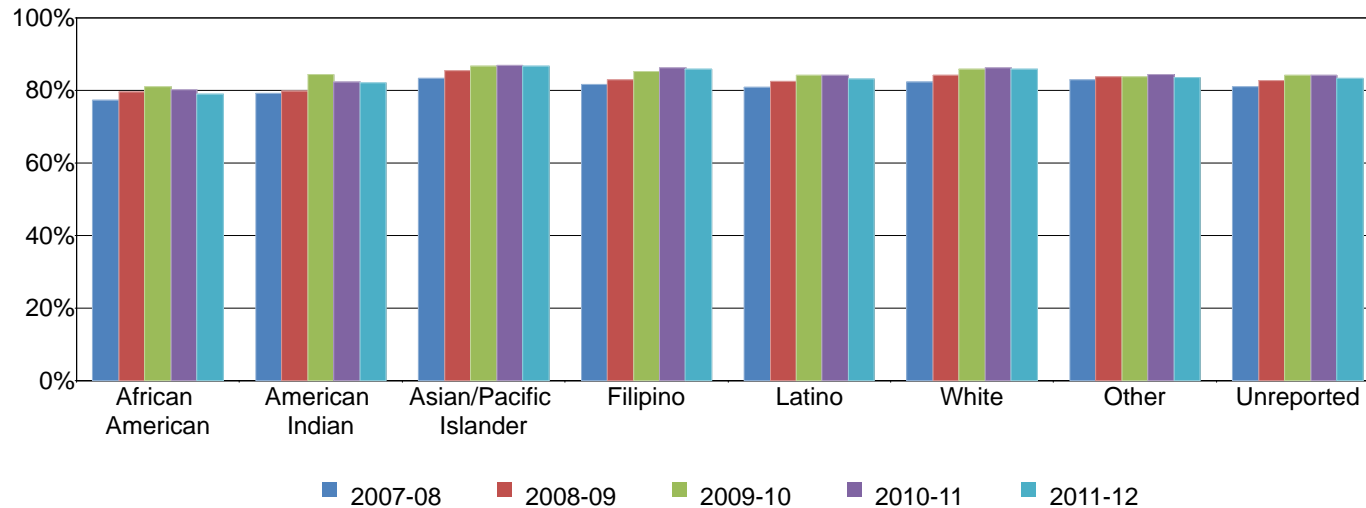


Table 3.7. All Colleges Retention Rates by Ethnicity

| | 2007-08 | 2008-09 | 2009-10 | 2010-11 | 2011-12 | % Change 07/08 - 11/12 | All Colleges Average 07/08 - 11/12 |
|------------------------|------------|------------|------------|------------|------------|---------------------------|---------------------------------------|
| African American | 77% | 80% | 81% | 80% | 79% | 2% | 79% |
| American Indian | 79% | 80% | 84% | 82% | 82% | 3% | 81% |
| Asian/Pacific Islander | 83% | 85% | 87% | 87% | 87% | 3% | 86% |
| Filipino | 82% | 83% | 85% | 86% | 86% | 4% | 84% |
| Latino | 81% | 82% | 84% | 84% | 83% | 2% | 83% |
| White | 82% | 84% | 86% | 86% | 86% | 4% | 85% |
| Other | 83% | 84% | 84% | 84% | 84% | 1% | 84% |
| Unreported | 81% | 83% | 84% | 84% | 83% | 2% | 83% |
| Average | 82% | 83% | 85% | 85% | 84% | 3% | 84% |

Source: SDCCD Information System

Note. Tutoring and cancelled classes are excluded.

SDCCD Fact Book 2012

Retention Rates by Age: Between 2007/08 and 2011/12, the age groups with the highest retention rates, on average, were students who were below 18 years old (95%), all other age groups were 84% except for students whose age grouping was 25-29 (83%). Most were comparable to the average retention rate of the general student population for all colleges in the district (84%).

Figure 3.8. All Colleges Retention Rates by Age

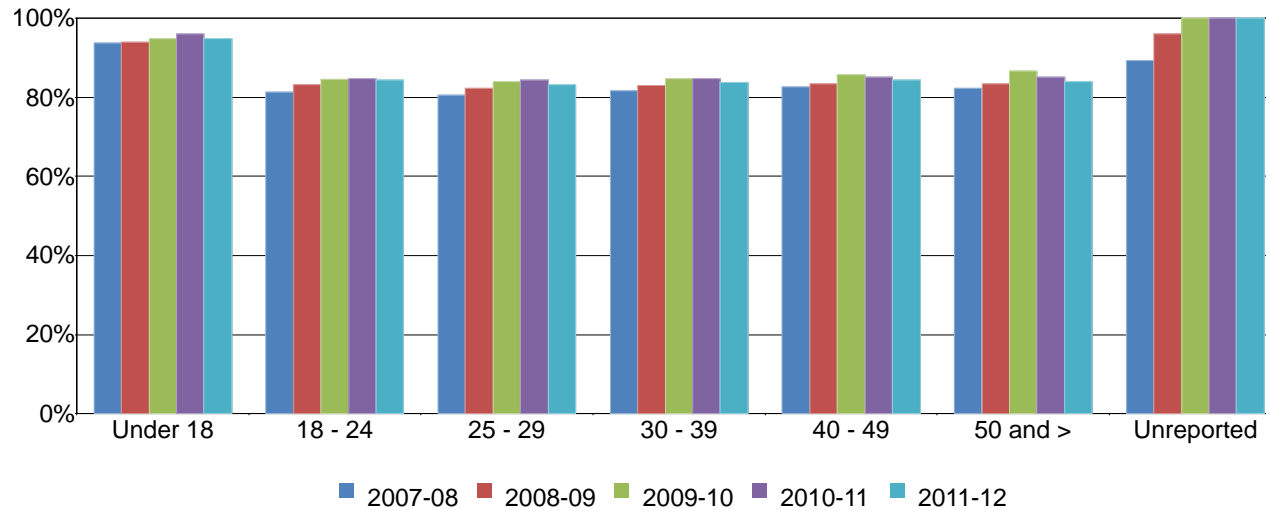


Table 3.8. All Colleges Retention Rates by Age

| | 2007-08 | 2008-09 | 2009-10 | 2010-11 | 2011-12 | % Change 07/08 - 11/12 | All Colleges Average 07/08 - 11/12 |
|----------------|------------|------------|------------|------------|------------|---------------------------|---------------------------------------|
| Under 18 | 94% | 94% | 95% | 96% | 95% | 1% | 95% |
| 18 - 24 | 81% | 83% | 85% | 85% | 84% | 3% | 84% |
| 25 - 29 | 81% | 82% | 84% | 84% | 83% | 3% | 83% |
| 30 - 39 | 82% | 83% | 85% | 85% | 84% | 2% | 84% |
| 40 - 49 | 83% | 83% | 86% | 85% | 84% | 2% | 84% |
| 50 and > | 82% | 83% | 87% | 85% | 84% | 2% | 84% |
| Unreported | 89% | 96% | 100% | 100% | 100% | 11% | 91% |
| Average | 82% | 83% | 85% | 85% | 84% | 3% | 84% |

Source: SDCCD Information System

Note. Tutoring and cancelled classes are excluded.

SDCCD Fact Book 2012

Overall Annual GPA: The annual GPA of students from all colleges in the district remained relatively stable between 2007/08 and 2011/12, with an average of 2.65.

Figure 3.9. All Colleges Overall Annual GPA

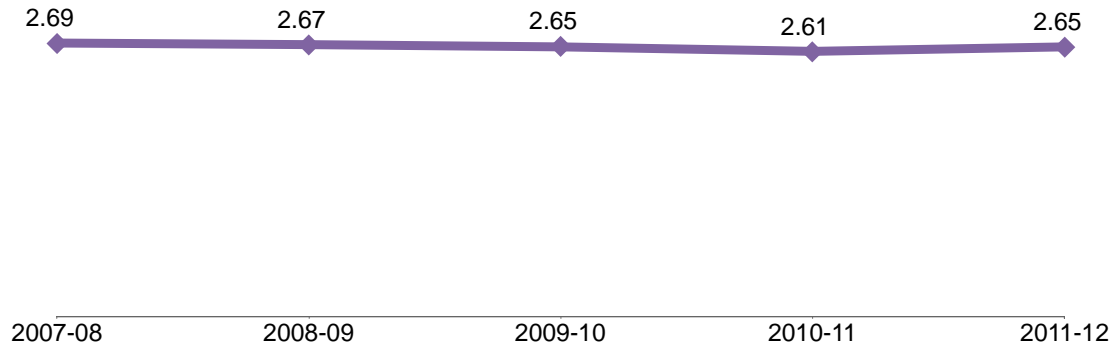


Table 3.9. All Colleges Overall Annual GPA

| | 2007-08 | 2008-09 | 2009-10 | 2010-11 | 2011-12 | All Colleges Average 07/08 - 11/12 |
|----------------|---------|---------|---------|---------|---------|---------------------------------------|
| Average | 2.69 | 2.67 | 2.65 | 2.61 | 2.65 | 2.65 |

Source: SDCCD Information System

SDCCD Fact Book 2012

Annual GPA by Gender: Between 2007/08 and 2011/12, female students, on average, had slightly higher GPAs than their male student counterpart (2.69 & 2.61, respectively). The average annual GPA of female students was higher than the average annual GPA of the general student population for all colleges in the district (2.65), while the average annual GPA of male students was slightly lower than same average.

Figure 3.10. All Colleges Annual GPA by Gender



Table 3.10. All Colleges Annual GPA by Gender

| | 2007-08 | 2008-09 | 2009-10 | 2010-11 | 2011-12 | All Colleges Average 07/08 - 11/12 |
|----------------|-------------|-------------|-------------|-------------|-------------|---------------------------------------|
| Female | 2.73 | 2.71 | 2.69 | 2.64 | 2.70 | 2.69 |
| Male | 2.64 | 2.64 | 2.62 | 2.57 | 2.61 | 2.61 |
| Unreported | 2.84 | 2.71 | 1.28 | 2.68 | 3.21 | 2.76 |
| Average | 2.69 | 2.67 | 2.65 | 2.61 | 2.65 | 2.65 |

Source: SDCCD Information System

SDCCD Fact Book 2012

Annual GPA by Ethnicity: Both White students (2.87) and Asian/Pacific Islander students (2.82) had the highest GPAs, on average, between 2007/08 and 2011/12. The average annual GPAs of African American, American Indian, Filipino, Latino, and students categorized as ‘Other’ ethnicities were lower than the average annual GPAs of the general student population of all colleges in the district (2.65), while the average annual GPAs of Asian/Pacific Islander and White students exceeded the same average.

Figure 3.11. All Colleges Annual GPA by Ethnicity

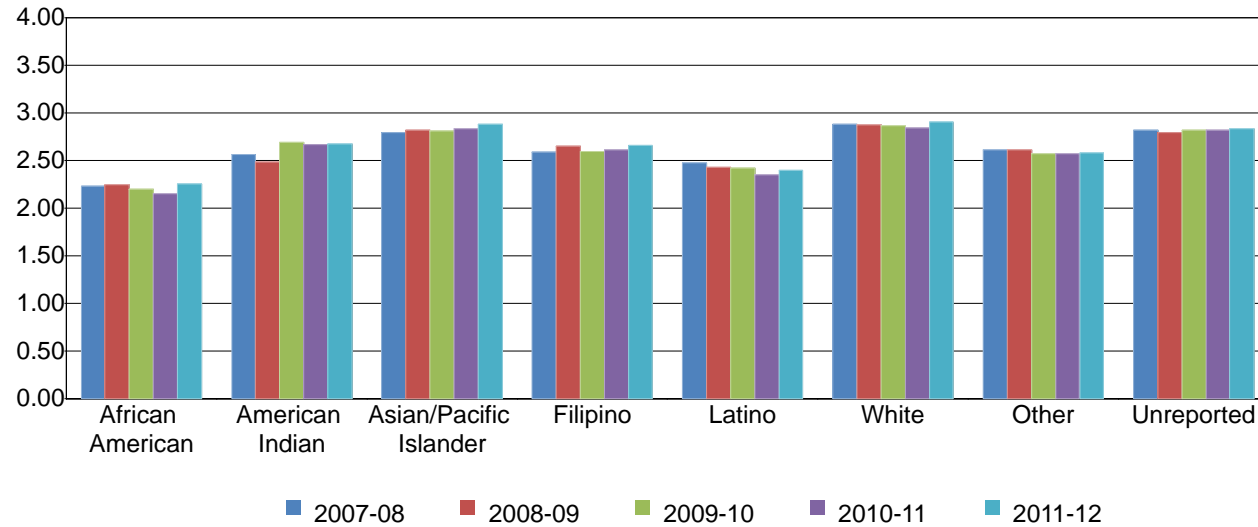


Table 3.11. All Colleges Annual GPA by Ethnicity

| | 2007-08 | 2008-09 | 2009-10 | 2010-11 | 2011-12 | All Colleges Average 07/08 - 11/12 |
|------------------------|-------------|-------------|-------------|-------------|-------------|---------------------------------------|
| African American | 2.23 | 2.24 | 2.20 | 2.15 | 2.25 | 2.21 |
| American Indian | 2.56 | 2.48 | 2.69 | 2.67 | 2.68 | 2.61 |
| Asian/Pacific Islander | 2.79 | 2.81 | 2.81 | 2.83 | 2.88 | 2.82 |
| Filipino | 2.59 | 2.65 | 2.60 | 2.61 | 2.66 | 2.62 |
| Latino | 2.48 | 2.43 | 2.42 | 2.35 | 2.40 | 2.41 |
| White | 2.88 | 2.87 | 2.87 | 2.84 | 2.91 | 2.87 |
| Other | 2.61 | 2.61 | 2.57 | 2.57 | 2.58 | 2.58 |
| Unreported | 2.82 | 2.79 | 2.81 | 2.81 | 2.83 | 2.81 |
| Average | 2.69 | 2.67 | 2.65 | 2.61 | 2.65 | 2.65 |

Source: SDCCD Information System

SDCCD Fact Book 2012

Annual GPA by Age: With the exception of students who were under age 18, a general trend between 2007/08 and 2011/12 showed, on average, as age increased so did GPA. The average annual GPA of students who were between ages 18 and 24 (2.47) was lower than the average annual GPA of the general student population of all colleges in the district (2.65). The average annual GPAs of all other age groups exceeded the same average.

Figure 3.12. All Colleges Annual GPA by Age

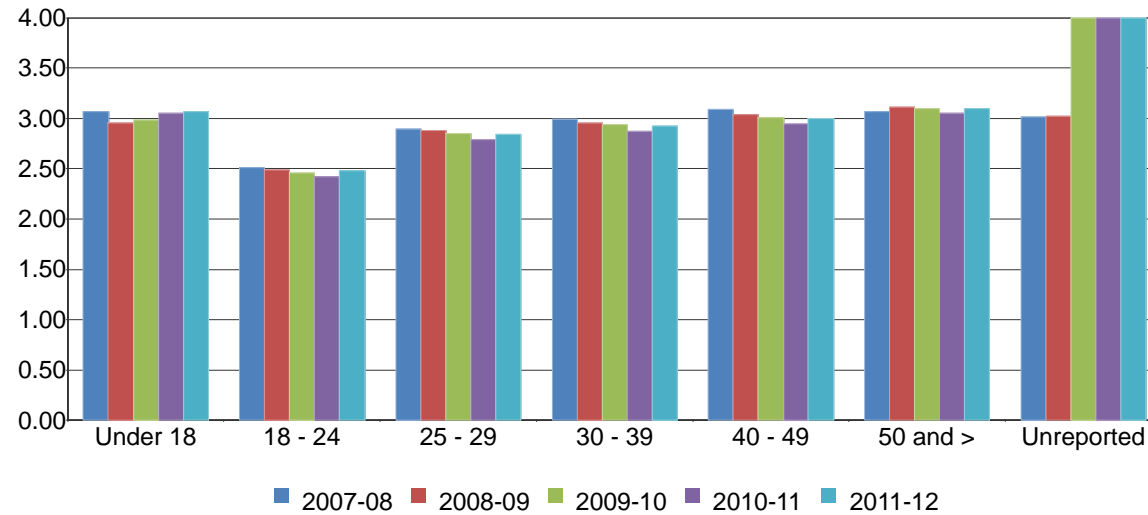


Table 3.12. All Colleges Annual GPA by Age

| | 2007-08 | 2008-09 | 2009-10 | 2010-11 | 2011-12 | All Colleges Average 07/08 - 11/12 |
|----------------|-------------|-------------|-------------|-------------|-------------|---------------------------------------|
| Under 18 | 3.07 | 2.95 | 2.99 | 3.05 | 3.07 | 3.02 |
| 18 - 24 | 2.51 | 2.49 | 2.46 | 2.42 | 2.48 | 2.47 |
| 25 - 29 | 2.90 | 2.88 | 2.85 | 2.79 | 2.84 | 2.85 |
| 30 - 39 | 2.99 | 2.96 | 2.94 | 2.87 | 2.93 | 2.93 |
| 40 - 49 | 3.09 | 3.04 | 3.01 | 2.95 | 3.00 | 3.01 |
| 50 and > | 3.07 | 3.11 | 3.10 | 3.05 | 3.10 | 3.08 |
| Unreported | 3.01 | 3.02 | 4.00 | 4.00 | 4.00 | 3.03 |
| Average | 2.69 | 2.67 | 2.65 | 2.61 | 2.65 | 2.65 |

Source: SDCCD Information System

SDCCD Fact Book 2012

Annual Awards Conferred: On average, 45% of the total awards conferred districtwide were associate degrees. Overall, there was a 14% increase in the number of associate degrees awarded between 2007/08 and 2011/12 and a 56% increase in certificates requiring 30 to 59 units. Furthermore, Continuing Education certificates of completion more than doubled (142%), from 581 in 2007/08 to 1,407 in 2011/12.

Figure 3.13. SDCCD Overall Annual Awards Conferred

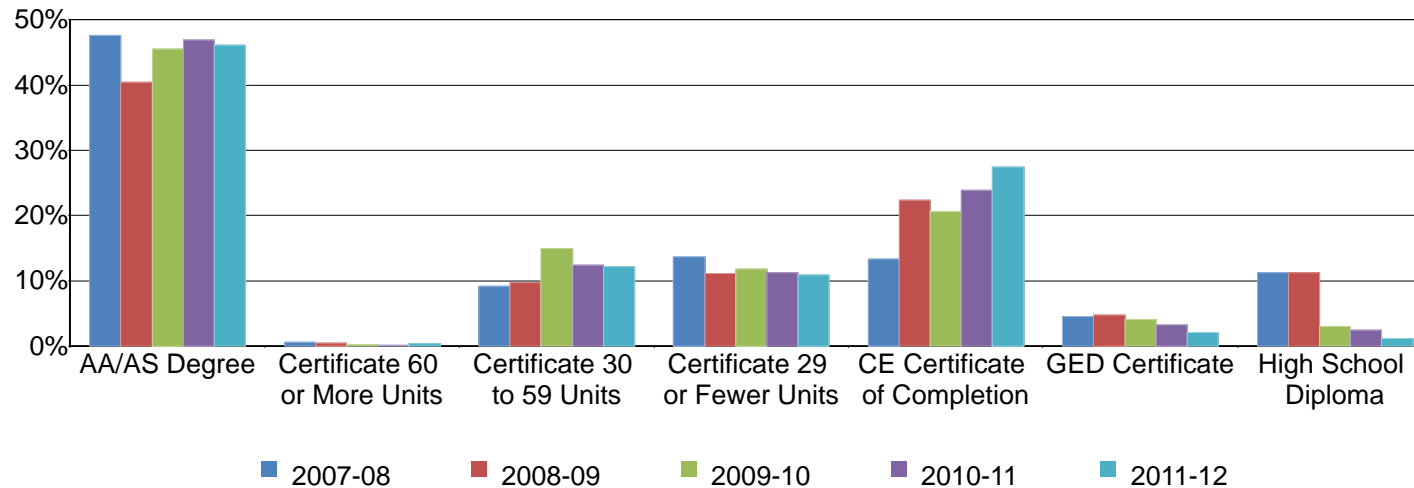


Table 3.13. SDCCD Overall Annual Awards Conferred

| | 2007-08 | | 2008-09 | | 2009-10 | | 2010-11 | | 2011-12 | | % Change 07/08-11/12 | Districtwide Average 07/08-11/12 |
|-------------------------------|--------------|-------------|--------------|-------------|--------------|-------------|--------------|-------------|--------------|-------------|-------------------------|-------------------------------------|
| AA/AS Degree | 2,070 | 48% | 2,124 | 40% | 2,081 | 45% | 2,182 | 47% | 2,358 | 46% | 14% | 45% |
| Certificate 60 or More Units | 22 | 1% | 24 | 0% | 11 | 0% | 4 | 0% | 16 | 0% | -27% | 0% |
| Certificate 30 to 59 Units | 398 | 9% | 511 | 10% | 681 | 15% | 574 | 12% | 621 | 12% | 56% | 12% |
| Certificate 29 or Fewer Units | 595 | 14% | 586 | 11% | 540 | 12% | 524 | 11% | 555 | 11% | -7% | 12% |
| CE Certificate of Completion | 581 | 13% | 1,177 | 22% | 942 | 21% | 1,113 | 24% | 1,407 | 27% | 142% | 22% |
| GED Certificate | 196 | 5% | 248 | 5% | 184 | 4% | 148 | 3% | 103 | 2% | -47% | 4% |
| High School Diploma | 489 | 11% | 588 | 11% | 137 | 3% | 111 | 2% | 60 | 1% | -88% | 6% |
| Total | 4,351 | 100% | 5,258 | 100% | 4,576 | 100% | 4,656 | 100% | 5,120 | 100% | 18% | 100% |

Source: SDCCD Information System

Note. In 2009/10, reporting procedures for high school diplomas were revised to correspond with MIS reporting requirements.

SDCCD Fact Book 2012

Annual Awards Conferred by Gender: Of the total awards conferred districtwide, female students (56%) received more associate degrees, on average, than their male student counterpart (44%) between 2007/08 and 2011/12. Both male and female students displayed an increased trend (27% & 4%, respectively) for the number of associate degrees awarded within all colleges in the district between 2007/08 and 2011/12. From 2007/08 to 2011/12, of the total awards conferred districtwide, male students (54%) received more Continuing Education certificates of completion, on average, than their female student counterpart (46%).

Figure 3.14.1. SDCCD Annual AA/AS Degrees by Gender

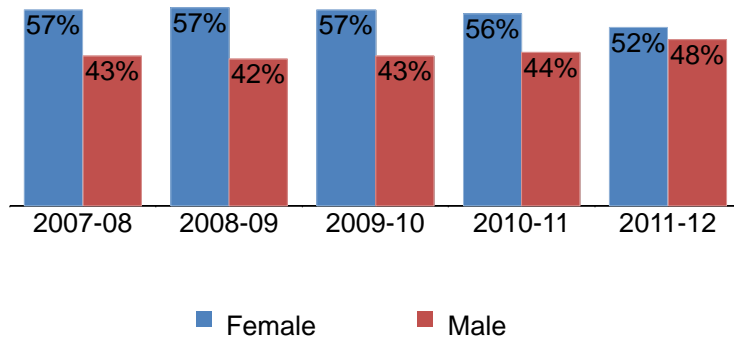


Figure 3.14.2. SDCCD Annual Certificates 60 or More Units by Gender

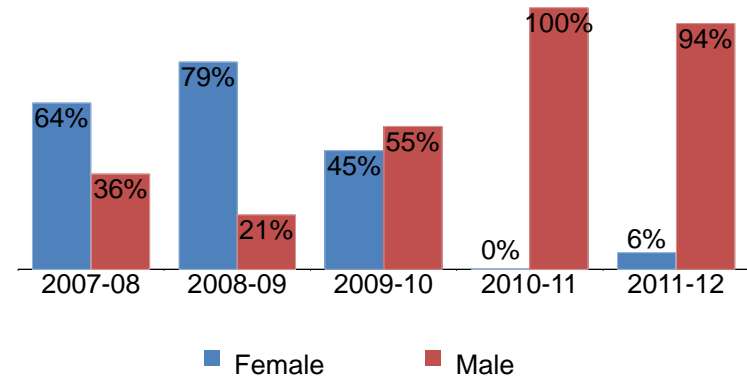


Figure 3.14.3. SDCCD Annual Certificates 30 to 59 Units by Gender

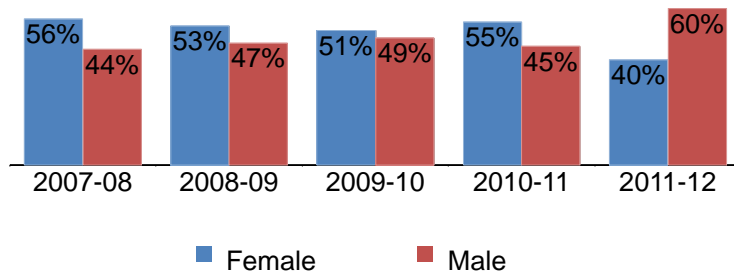


Figure 3.14.4. SDCCD Annual Certificates 29 or Fewer Units by Gender

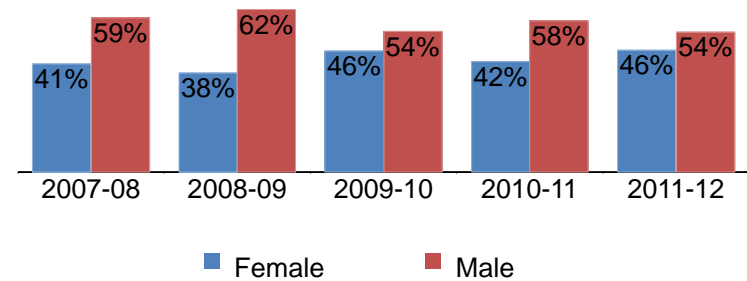


Figure 3.14.5. SDCCD Annual CE Certificates of Completion by Gender

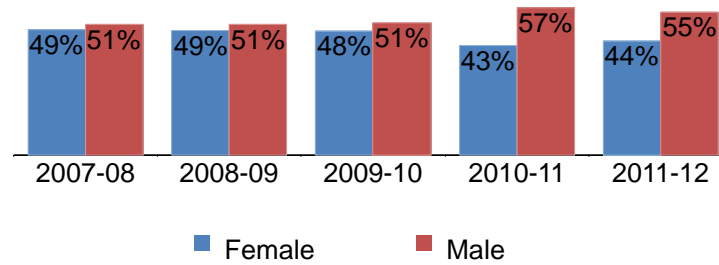


Figure 3.14.6 SDCCD Annual GED Certificates by Gender

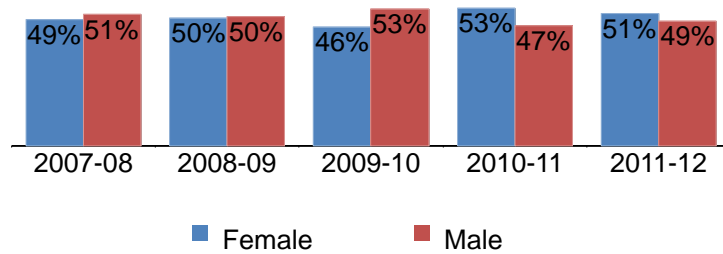
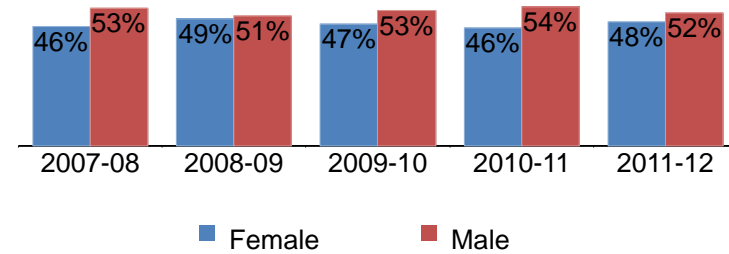


Figure 3.14.7. SDCCD Annual High School Diplomas by Gender



SDCCD Fact Book 2012

Table 3.14. SDCCD Annual Awards Conferred by Gender

| | | 2007-08 | | 2008-09 | | 2009-10 | | 2010-11 | | 2011-12 | | % Change 07/08-11/12 | Districtwide Average 07/08-11/12 |
|-------------------------------|--------------|--------------|--------------|--------------|--------------|--------------|--------------|--------------|--------------|--------------|-------------|-------------------------|-------------------------------------|
| AA/AS Degree | Female | 1,175 | 57% | 1,221 | 57% | 1,181 | 57% | 1,213 | 56% | 1,219 | 52% | 4% | 56% |
| | Male | 895 | 43% | 902 | 42% | 900 | 43% | 969 | 44% | 1,138 | 48% | 27% | 44% |
| | Unreported | 0 | 0% | 1 | 0% | 0 | 0% | 0 | 0% | 1 | 0% | --- | 0% |
| | Total | 2,070 | 100% | 2,124 | 100% | 2,081 | 100% | 2,182 | 100% | 2,358 | 100% | 14% | 100% |
| Certificate 60 or More Units | Female | 14 | 64% | 19 | 79% | 5 | 45% | 0 | 0% | 1 | 6% | -93% | 51% |
| | Male | 8 | 36% | 5 | 21% | 6 | 55% | 4 | 100% | 15 | 94% | 88% | 49% |
| | Total | 22 | 100% | 24 | 100% | 11 | 100% | 4 | 100% | 16 | 100% | -27% | 100% |
| Certificate 30 to 59 Units | Female | 222 | 56% | 272 | 53% | 350 | 51% | 313 | 55% | 249 | 40% | 12% | 50% |
| | Male | 176 | 44% | 238 | 47% | 331 | 49% | 261 | 45% | 371 | 60% | 111% | 49% |
| | Unreported | 0 | 0% | 1 | 0% | 0 | 0% | 0 | 0% | 1 | 0% | --- | 0% |
| | Total | 398 | 100% | 511 | 100% | 681 | 100% | 574 | 100% | 621 | 100% | 56% | 100% |
| Certificate 29 or Fewer Units | Female | 245 | 41% | 222 | 38% | 250 | 46% | 221 | 42% | 258 | 46% | 5% | 43% |
| | Male | 350 | 59% | 364 | 62% | 290 | 54% | 303 | 58% | 297 | 54% | -15% | 57% |
| | Total | 595 | 100% | 586 | 100% | 540 | 100% | 524 | 100% | 555 | 100% | -7% | 100% |
| CE Certificate of Completion | Female | 284 | 49% | 572 | 49% | 455 | 48% | 474 | 43% | 626 | 44% | 120% | 46% |
| | Male | 296 | 51% | 600 | 51% | 485 | 51% | 638 | 57% | 780 | 55% | 164% | 54% |
| | Unreported | 1 | 0% | 5 | 0% | 2 | 0% | 1 | 0% | 1 | 0% | 0% | 0% |
| | Total | 581 | 100% | 1,177 | 100% | 942 | 100% | 1,113 | 100% | 1,407 | 100% | 142% | 100% |
| GED Certificate | Female | 96 | 49% | 123 | 50% | 85 | 46% | 79 | 53% | 53 | 51% | -45% | 50% |
| | Male | 100 | 51% | 125 | 50% | 98 | 53% | 69 | 47% | 50 | 49% | -50% | 50% |
| | Unreported | 0 | 0% | 0 | 0% | 1 | 1% | 0 | 0% | 0 | 0% | --- | 0% |
| | Total | 196 | 100% | 248 | 100% | 184 | 100% | 148 | 100% | 103 | 100% | -47% | 100% |
| High School Diploma | Female | 227 | 46% | 290 | 49% | 65 | 47% | 51 | 46% | 29 | 48% | -87% | 48% |
| | Male | 261 | 53% | 298 | 51% | 72 | 53% | 60 | 54% | 31 | 52% | -88% | 52% |
| | Unreported | 1 | 0% | 0 | 0% | 0 | 0% | 0 | 0% | 0 | 0% | -100% | 0% |
| | Total | 489 | 100% | 588 | 100% | 137 | 100% | 111 | 100% | 60 | 100% | -88% | 100% |
| Grand Total | 4,351 | 100% | 5,258 | 100% | 4,576 | 100% | 4,656 | 100% | 5,120 | 100% | 18% | 100% | |

Source: SDCCD Information System

Note. In 2009/10, reporting procedures for high school diplomas were revised to correspond with MIS reporting requirements.

SDCCD Fact Book 2012

Annual Awards Conferred by Ethnicity: With the exception of African American students, the number of associate degrees conferred within all colleges in the district increased for all ethnic groups between 2007/08 and 2011/12. With the exception of Filipino students, the number of certificates of completion conferred at Continuing Education also increased for all ethnic groups between 2007/08 and 2011/12. On average, White students received the most awards in all award categories within all colleges in the district. However, Latino students generally received the most awards across all Continuing Education award categories.

Figure 3.15.1. SDCCD Annual AA/AS Degree by Ethnicity

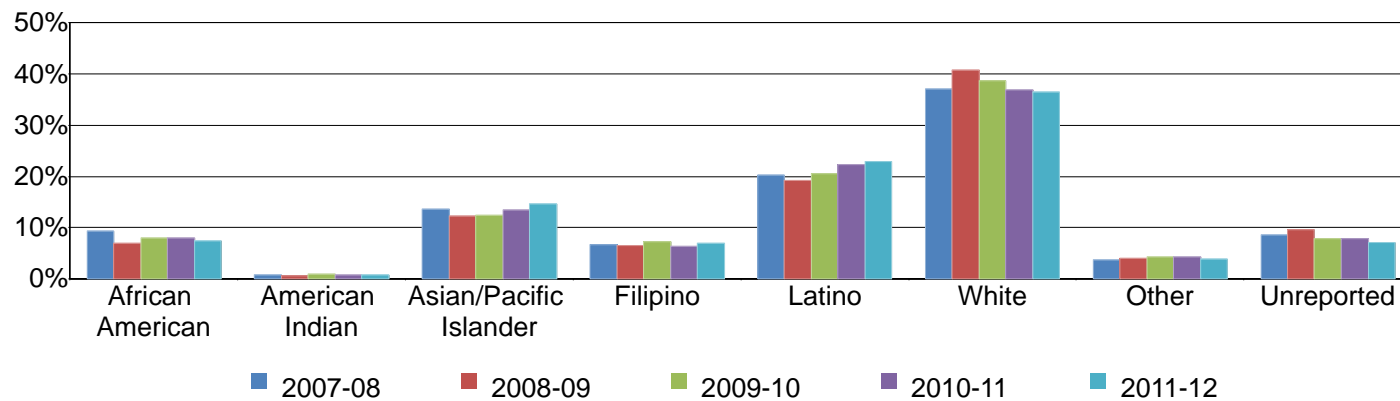


Figure 3.15.2. SDCCD Annual Certificates 60 or More Units by Ethnicity

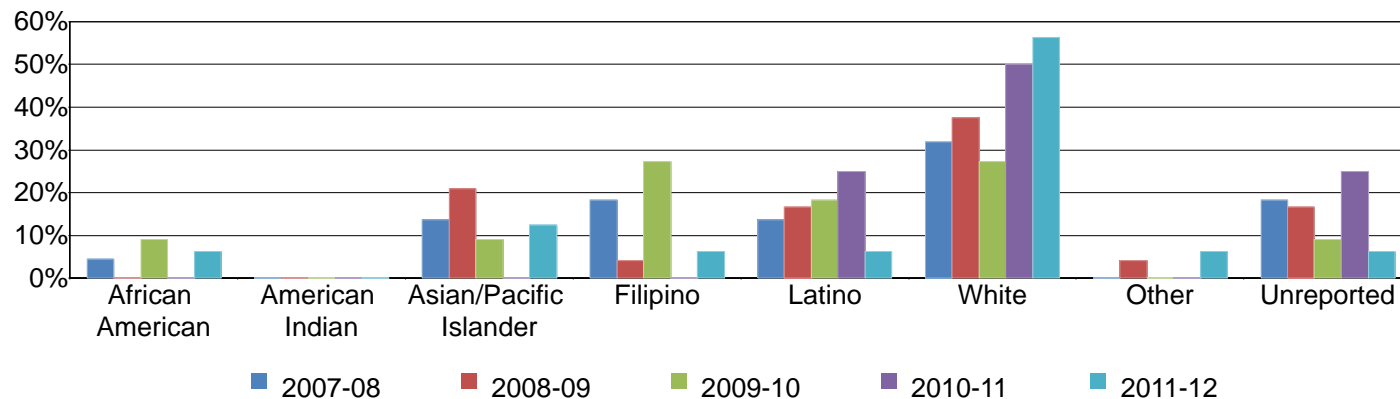


Figure 3.15.3. SDCCD Annual Certificates 30 to 59 Units by Ethnicity

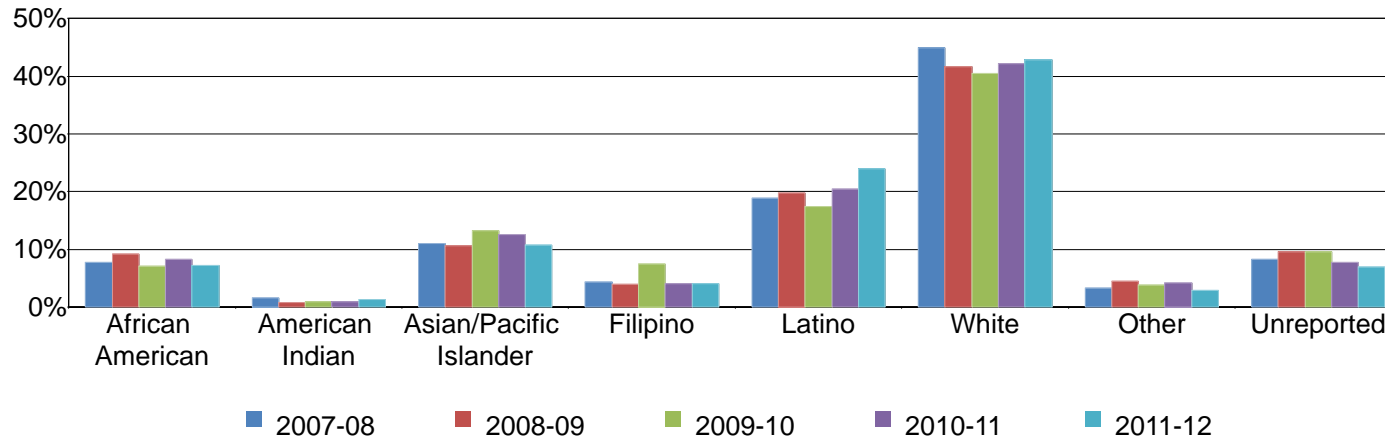


Figure 3.15.4. SDCCD Annual Certificates 29 or Fewer Units by Ethnicity

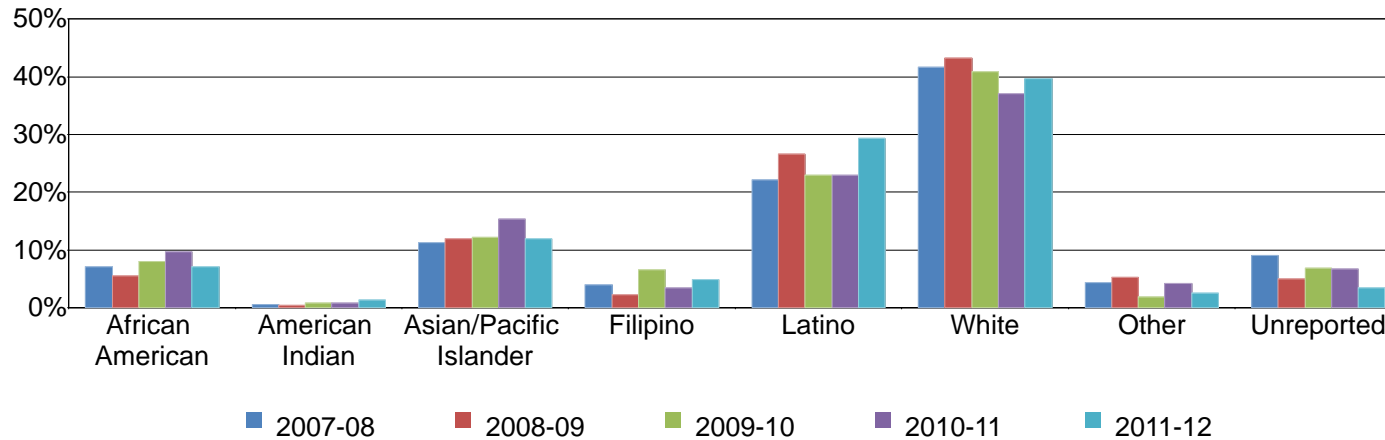


Figure 3.15.5. SDCCD Annual CE Certificates of Completion by Ethnicity

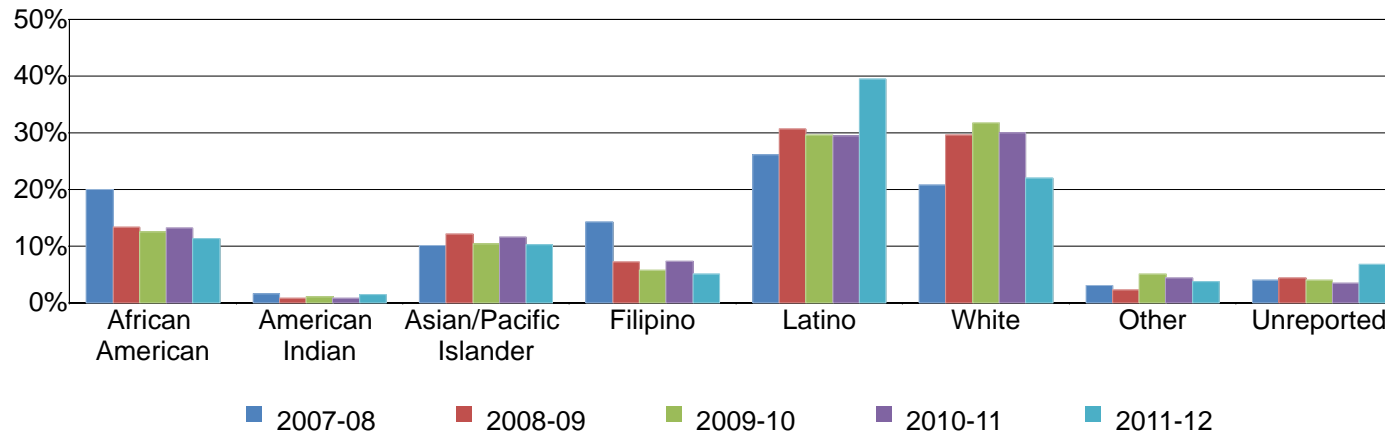


Figure 3.15.6. SDCCD Annual GED Certificates by Ethnicity

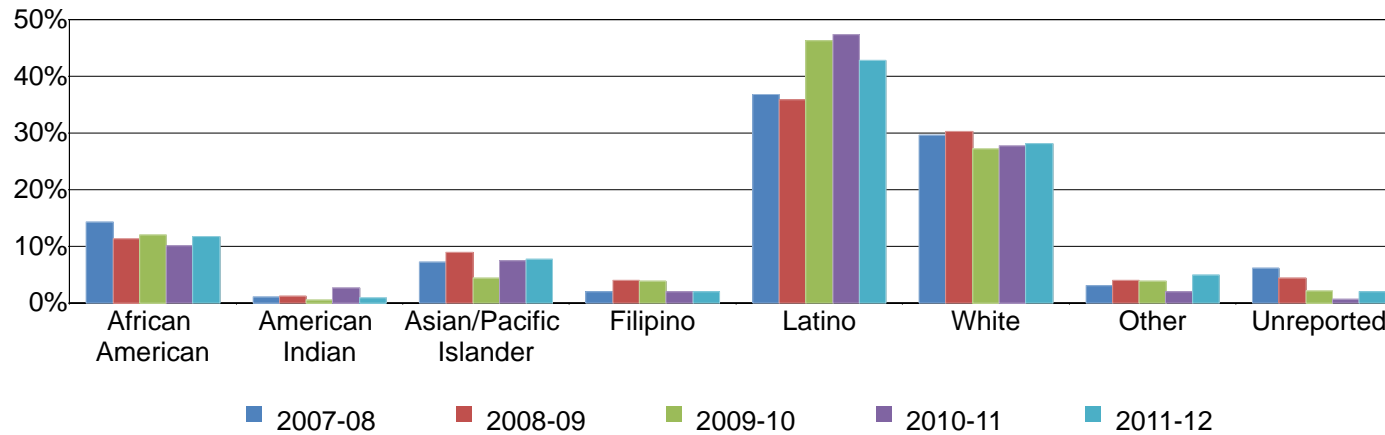
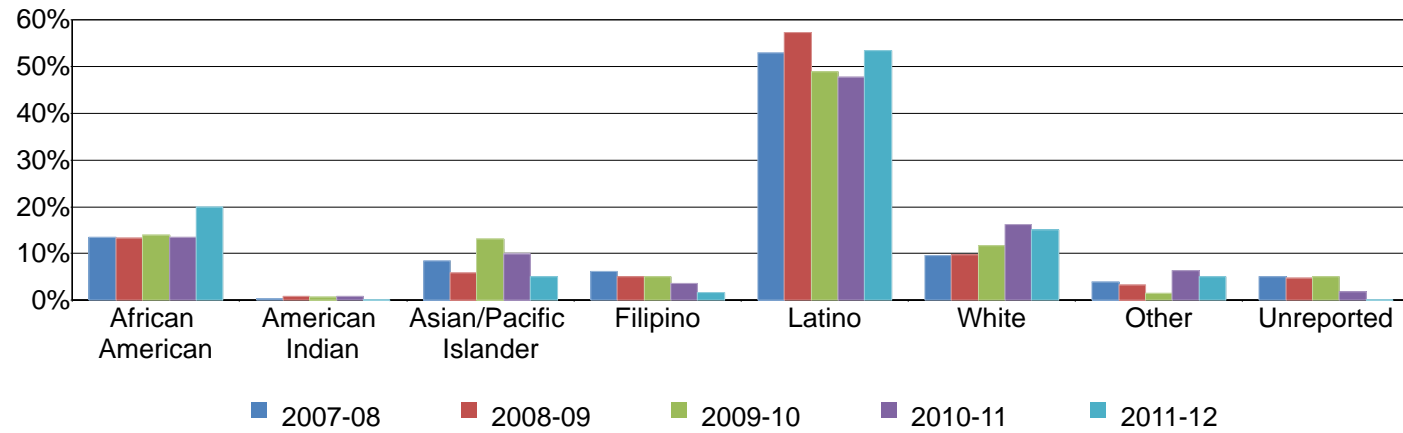


Figure 3.15.7. SDCCD Annual High School Diplomas by Ethnicity



SDCCD Fact Book 2012

Table 3.15. SDCCD Annual Awards Conferred by Ethnicity

| | | 2007-08 | | 2008-09 | | 2009-10 | | 2010-11 | | 2011-12 | | % Change 07/08-11/12 | Districtwide Average 07/08-11/12 |
|---------------------------------|------------------------|-------------|--------------|-------------|--------------|-------------|--------------|-------------|--------------|-------------|-------------|-------------------------|-------------------------------------|
| AA/AS Degree | African American | 194 | 9% | 149 | 7% | 167 | 8% | 176 | 8% | 174 | 7% | -10% | 8% |
| | American Indian | 17 | 1% | 15 | 1% | 20 | 1% | 16 | 1% | 20 | 1% | 18% | 1% |
| | Asian/Pacific Islander | 283 | 14% | 260 | 12% | 257 | 12% | 293 | 13% | 344 | 15% | 22% | 13% |
| | Filipino | 137 | 7% | 138 | 6% | 151 | 7% | 138 | 6% | 164 | 7% | 20% | 7% |
| | Latino | 420 | 20% | 408 | 19% | 427 | 21% | 487 | 22% | 539 | 23% | 28% | 21% |
| | White | 765 | 37% | 863 | 41% | 805 | 39% | 806 | 37% | 858 | 36% | 12% | 38% |
| | Other | 76 | 4% | 86 | 4% | 91 | 4% | 95 | 4% | 92 | 4% | 21% | 4% |
| | Unreported | 178 | 9% | 205 | 10% | 163 | 8% | 171 | 8% | 167 | 7% | -6% | 8% |
| Total | 2,070 | 100% | 2,124 | 100% | 2,081 | 100% | 2,182 | 100% | 2,358 | 100% | 14% | 100% | |
| Certificate 60 or More Units | African American | 1 | 5% | 0 | 0% | 1 | 9% | 0 | 0% | 1 | 6% | 0% | 4% |
| | Asian/Pacific Islander | 3 | 14% | 5 | 21% | 1 | 9% | 0 | 0% | 2 | 13% | -33% | 14% |
| | Filipino | 4 | 18% | 1 | 4% | 3 | 27% | 0 | 0% | 1 | 6% | -75% | 12% |
| | Latino | 3 | 14% | 4 | 17% | 2 | 18% | 1 | 25% | 1 | 6% | -67% | 14% |
| | White | 7 | 32% | 9 | 38% | 3 | 27% | 2 | 50% | 9 | 56% | 29% | 39% |
| | Other | 0 | 0% | 1 | 4% | 0 | 0% | 0 | 0% | 1 | 6% | --- | 3% |
| | Unreported | 4 | 18% | 4 | 17% | 1 | 9% | 1 | 25% | 1 | 6% | -75% | 14% |
| Total | 22 | 100% | 24 | 100% | 11 | 100% | 4 | 100% | 16 | 100% | -27% | 100% | |

Source: SDCCD Information System

Note. In 2009/10, reporting procedures for high school diplomas were revised to correspond with MIS reporting requirements.

SDCCD Fact Book 2012

Table 3.15. SDCCD Annual Awards Conferred by Ethnicity (continued)

| | | 2007-08 | 2008-09 | 2009-10 | 2010-11 | 2011-12 | % Change 07/08-11/12 | Districtwide Average 07/08-11/12 | | | | | |
|----------------------------------|------------------------|-------------|------------|-------------|------------|-------------|-------------------------|-------------------------------------|------------|-------------|------------|-------------|-----|
| Certificate 30 to 59 Units | African American | 31 | 8% | 47 | 9% | 48 | 7% | 47 | 8% | 45% | 8% | | |
| | American Indian | 6 | 2% | 4 | 1% | 6 | 1% | 5 | 1% | 8 | 1% | 33% | 1% |
| | Asian/Pacific Islander | 44 | 11% | 54 | 11% | 90 | 13% | 72 | 13% | 67 | 11% | 52% | 12% |
| | Filipino | 17 | 4% | 20 | 4% | 51 | 7% | 23 | 4% | 25 | 4% | 47% | 5% |
| | Latino | 75 | 19% | 101 | 20% | 119 | 17% | 117 | 20% | 149 | 24% | 99% | 20% |
| | White | 179 | 45% | 213 | 42% | 276 | 41% | 242 | 42% | 266 | 43% | 49% | 42% |
| | Other | 13 | 3% | 23 | 5% | 26 | 4% | 24 | 4% | 18 | 3% | 38% | 4% |
| | Unreported | 33 | 8% | 49 | 10% | 65 | 10% | 44 | 8% | 43 | 7% | 30% | 8% |
| Total | 398 | 100% | 511 | 100% | 681 | 100% | 574 | 100% | 621 | 100% | 56% | 100% | |
| Certificate 29 or Fewer Units | African American | 42 | 7% | 32 | 5% | 43 | 8% | 51 | 10% | 39 | 7% | -7% | 7% |
| | American Indian | 3 | 1% | 2 | 0% | 4 | 1% | 4 | 1% | 7 | 1% | 133% | 1% |
| | Asian/Pacific Islander | 67 | 11% | 70 | 12% | 66 | 12% | 80 | 15% | 66 | 12% | -1% | 12% |
| | Filipino | 23 | 4% | 13 | 2% | 35 | 6% | 18 | 3% | 27 | 5% | 17% | 4% |
| | Latino | 132 | 22% | 156 | 27% | 124 | 23% | 120 | 23% | 163 | 29% | 23% | 25% |
| | White | 248 | 42% | 253 | 43% | 221 | 41% | 194 | 37% | 220 | 40% | -11% | 41% |
| | Other | 26 | 4% | 31 | 5% | 10 | 2% | 22 | 4% | 14 | 3% | -46% | 4% |
| | Unreported | 54 | 9% | 29 | 5% | 37 | 7% | 35 | 7% | 19 | 3% | -65% | 6% |
| Total | 595 | 100% | 586 | 100% | 540 | 100% | 524 | 100% | 555 | 100% | -7% | 100% | |

Source: SDCCD Information System

Note. In 2009/10, reporting procedures for high school diplomas were revised to correspond with MIS reporting requirements.

SDCCD Fact Book 2012

Table 3.15. SDCCD Annual Awards Conferred by Ethnicity (continued)

| | | 2007-08 | | 2008-09 | | 2009-10 | | 2010-11 | | 2011-12 | | % Change 07/08-11/12 | Districtwide Average 07/08-11/12 |
|---------------------------------|------------------------|-------------|--------------|-------------|--------------|-------------|--------------|-------------|--------------|-------------|-------------|-------------------------|-------------------------------------|
| CE Certificate of Completion | African American | 116 | 20% | 156 | 13% | 118 | 13% | 147 | 13% | 160 | 11% | 38% | 13% |
| | American Indian | 9 | 2% | 9 | 1% | 10 | 1% | 9 | 1% | 20 | 1% | 122% | 1% |
| | Asian/Pacific Islander | 59 | 10% | 142 | 12% | 98 | 10% | 129 | 12% | 144 | 10% | 144% | 11% |
| | Filipino | 83 | 14% | 84 | 7% | 54 | 6% | 82 | 7% | 71 | 5% | -14% | 7% |
| | Latino | 152 | 26% | 360 | 31% | 278 | 30% | 327 | 29% | 555 | 39% | 265% | 32% |
| | White | 121 | 21% | 348 | 30% | 299 | 32% | 333 | 30% | 309 | 22% | 155% | 27% |
| | Other | 18 | 3% | 26 | 2% | 47 | 5% | 48 | 4% | 52 | 4% | 189% | 4% |
| | Unreported | 23 | 4% | 52 | 4% | 38 | 4% | 38 | 3% | 96 | 7% | 317% | 5% |
| Total | 581 | 100% | 1,177 | 100% | 942 | 100% | 1,113 | 100% | 1,407 | 100% | 142% | 100% | |
| GED Certificate | African American | 28 | 14% | 28 | 11% | 22 | 12% | 15 | 10% | 12 | 12% | -57% | 12% |
| | American Indian | 2 | 1% | 3 | 1% | 1 | 1% | 4 | 3% | 1 | 1% | -50% | 1% |
| | Asian/Pacific Islander | 14 | 7% | 22 | 9% | 8 | 4% | 11 | 7% | 8 | 8% | -43% | 7% |
| | Filipino | 4 | 2% | 10 | 4% | 7 | 4% | 3 | 2% | 2 | 2% | -50% | 3% |
| | Latino | 72 | 37% | 89 | 36% | 85 | 46% | 70 | 47% | 44 | 43% | -39% | 41% |
| | White | 58 | 30% | 75 | 30% | 50 | 27% | 41 | 28% | 29 | 28% | -50% | 29% |
| | Other | 6 | 3% | 10 | 4% | 7 | 4% | 3 | 2% | 5 | 5% | -17% | 4% |
| | Unreported | 12 | 6% | 11 | 4% | 4 | 2% | 1 | 1% | 2 | 2% | -83% | 3% |
| Total | 196 | 100% | 248 | 100% | 184 | 100% | 148 | 100% | 103 | 100% | -47% | 100% | |
| High School Diploma | African American | 66 | 13% | 78 | 13% | 19 | 14% | 15 | 14% | 12 | 20% | -82% | 14% |
| | American Indian | 2 | 0% | 5 | 1% | 1 | 1% | 1 | 1% | 0 | 0% | -100% | 1% |
| | Asian/Pacific Islander | 41 | 8% | 34 | 6% | 18 | 13% | 11 | 10% | 3 | 5% | -93% | 8% |
| | Filipino | 30 | 6% | 30 | 5% | 7 | 5% | 4 | 4% | 1 | 2% | -97% | 5% |
| | Latino | 259 | 53% | 337 | 57% | 67 | 49% | 53 | 48% | 32 | 53% | -88% | 54% |
| | White | 47 | 10% | 57 | 10% | 16 | 12% | 18 | 16% | 9 | 15% | -81% | 11% |
| | Other | 19 | 4% | 19 | 3% | 2 | 1% | 7 | 6% | 3 | 5% | -84% | 4% |
| | Unreported | 25 | 5% | 28 | 5% | 7 | 5% | 2 | 2% | 0 | 0% | -100% | 4% |
| Total | 489 | 100% | 588 | 100% | 137 | 100% | 111 | 100% | 60 | 100% | -88% | 100% | |
| Grand Total | 4,351 | 100% | 5,258 | 100% | 4,576 | 100% | 4,656 | 100% | 5,120 | 100% | 18% | 100% | |

Source: SDCCD Information System

Note. In 2009/10, reporting procedures for high school diplomas were revised to correspond with MIS reporting requirements.

SDCCD Fact Book 2012

Annual Awards Conferred by Age: Between 2007/08 and 2011/12, students between ages 18 and 24 years old received the highest number of associate degrees (38%), followed by the 25-29 year old age group (27%) on average. This trend was different for Continuing Education certificate of completion. At Continuing Education, on average, students' ages 30-39 and 40-49 years old consistently displayed a trend of receiving the highest number of certificates of completion (27% & 24%, respectively).

Figure 3.16.1. SDCCD Annual AA/AS Degrees by Age

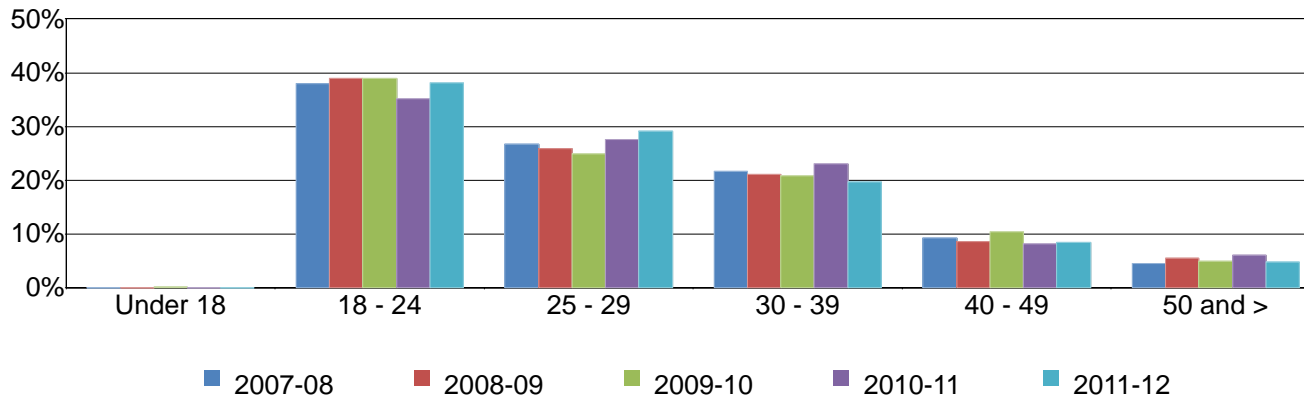


Figure 3.16.2. SDCCD Annual Certificates 60 or More Units by Age

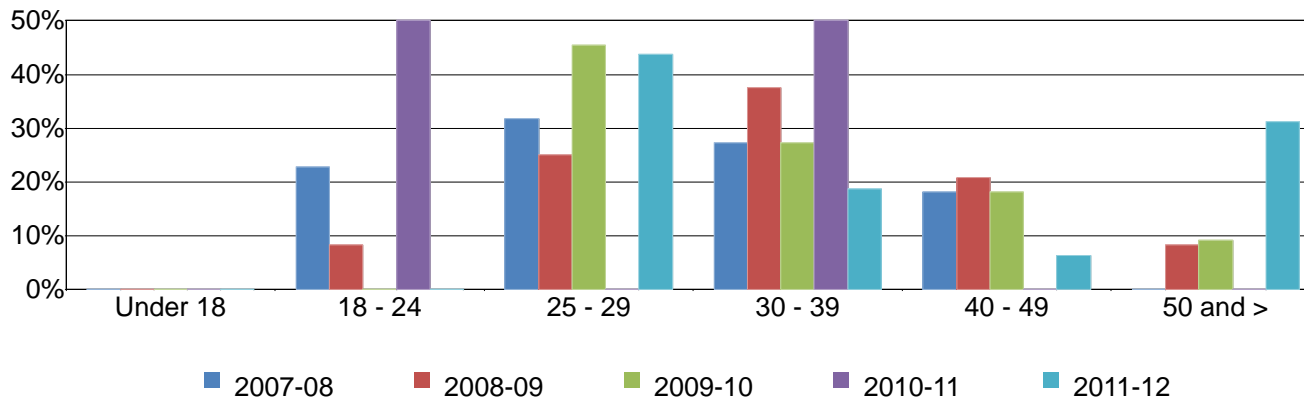


Figure 3.16.3. SDCCD Annual Certificates 30 to 59 Units by Age

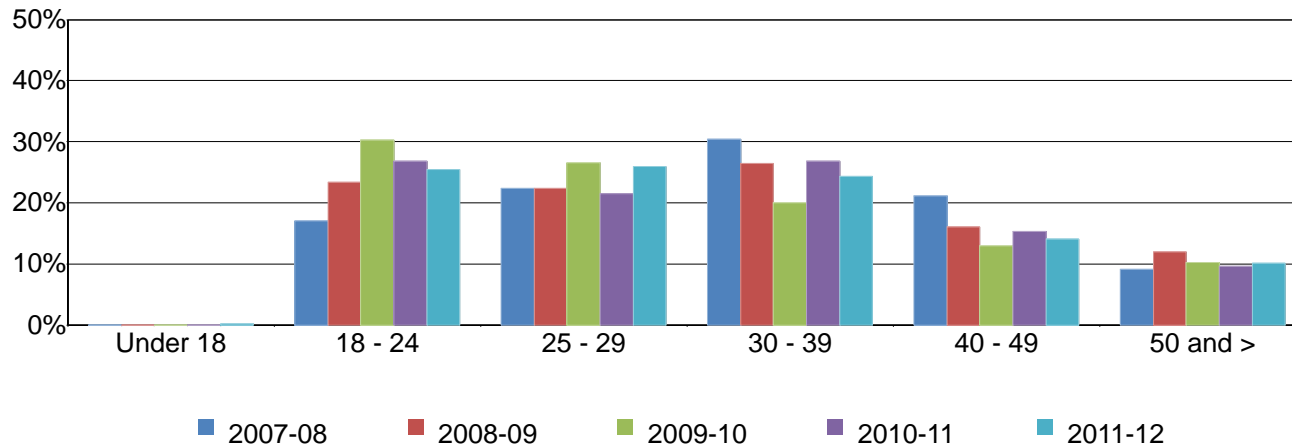


Figure 3.16.4. SDCCD Annual Certificates 29 or Fewer Units by Age

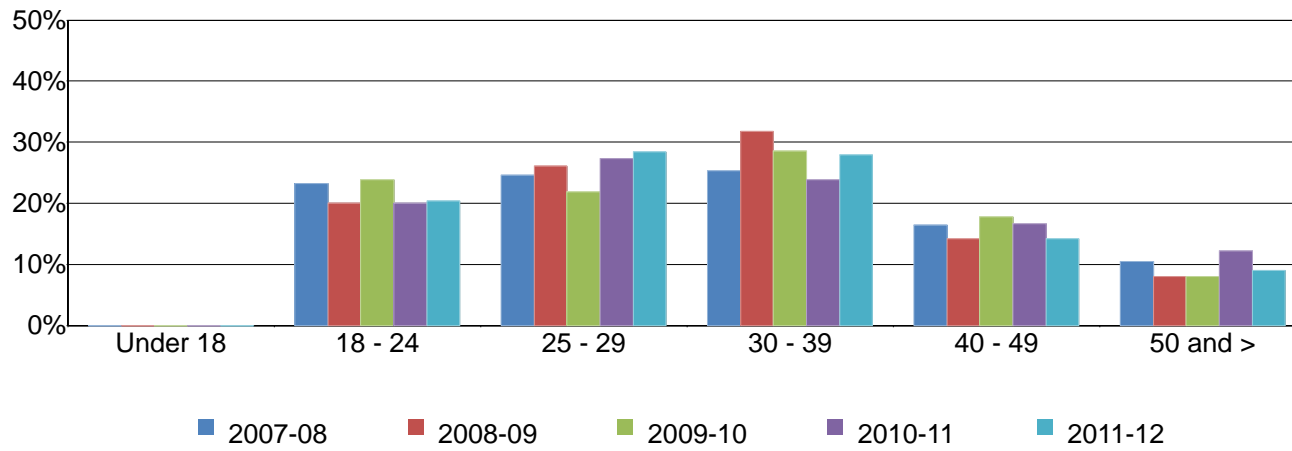


Figure 3.16.5. SDCCD Annual CE Certificates of Completion by Age

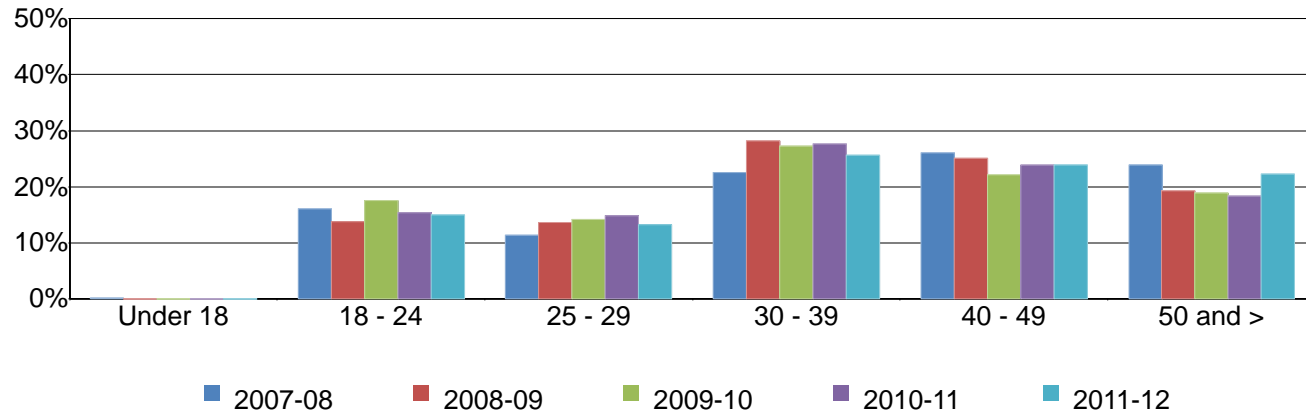


Figure 3.16.6. SDCCD Annual GED Certificates by Age

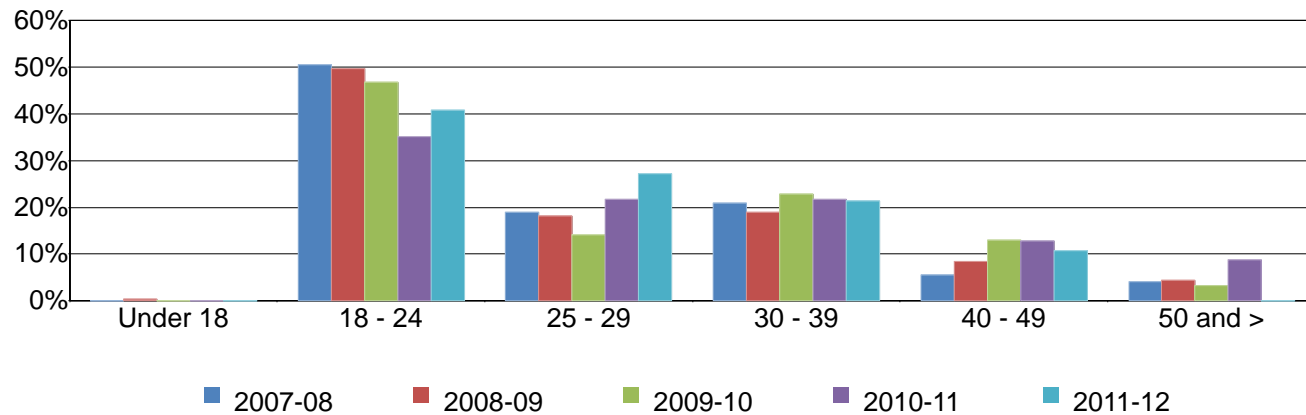
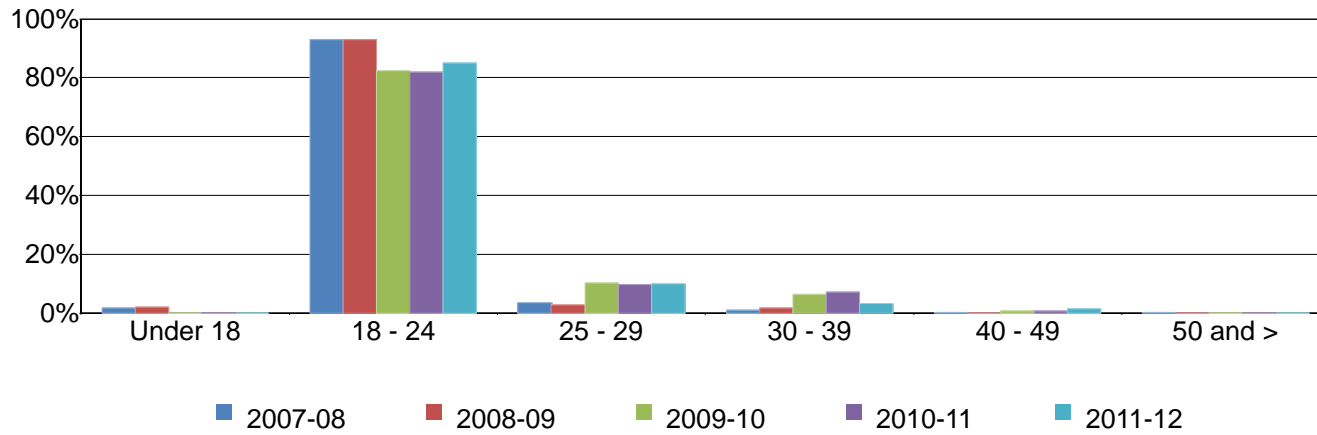


Figure 3.16.7. SDCCD High School Diplomas by Age



SDCCD Fact Book 2012

Table 3.16. SDCCD Annual Awards Conferred by Age

| | | 2007-08 | | 2008-09 | | 2009-10 | | 2010-11 | | 2011-12 | | % Change 07/08-11/12 | Districtwide Average 07/08-11/12 |
|----------------------------------|--------------|--------------|-------------|--------------|-------------|--------------|-------------|--------------|-------------|--------------|-------------|-------------------------|-------------------------------------|
| AA/AS Degree | Under 18 | 0 | 0% | 0 | 0% | 2 | 0% | 1 | 0% | 0 | 0% | --- | 0% |
| | 18 - 24 | 785 | 38% | 828 | 39% | 810 | 39% | 766 | 35% | 900 | 38% | 15% | 38% |
| | 25 - 29 | 552 | 27% | 548 | 26% | 518 | 25% | 601 | 28% | 685 | 29% | 24% | 27% |
| | 30 - 39 | 448 | 22% | 449 | 21% | 433 | 21% | 503 | 23% | 465 | 20% | 4% | 21% |
| | 40 - 49 | 192 | 9% | 183 | 9% | 216 | 10% | 178 | 8% | 197 | 8% | 3% | 9% |
| | 50 and > | 93 | 4% | 116 | 5% | 102 | 5% | 133 | 6% | 111 | 5% | 19% | 5% |
| | Total | 2,070 | 100% | 2,124 | 100% | 2,081 | 100% | 2,182 | 100% | 2,358 | 100% | 14% | 100% |
| Certificate 60 or More Units | 18 - 24 | 5 | 23% | 2 | 8% | 0 | 0% | 2 | 50% | 0 | 0% | -100% | 12% |
| | 25 - 29 | 7 | 32% | 6 | 25% | 5 | 45% | 0 | 0% | 7 | 44% | 0% | 32% |
| | 30 - 39 | 6 | 27% | 9 | 38% | 3 | 27% | 2 | 50% | 3 | 19% | -50% | 30% |
| | 40 - 49 | 4 | 18% | 5 | 21% | 2 | 18% | 0 | 0% | 1 | 6% | -75% | 16% |
| | 50 and > | 0 | 0% | 2 | 8% | 1 | 9% | 0 | 0% | 5 | 31% | --- | 10% |
| | Total | 22 | 100% | 24 | 100% | 11 | 100% | 4 | 100% | 16 | 100% | -27% | 100% |
| Certificate 30 to 59 Units | Under 18 | 0 | 0% | 0 | 0% | 0 | 0% | 0 | 0% | 1 | 0% | --- | 0% |
| | 18 - 24 | 68 | 17% | 119 | 23% | 206 | 30% | 154 | 27% | 158 | 25% | 132% | 25% |
| | 25 - 29 | 89 | 22% | 114 | 22% | 181 | 27% | 123 | 21% | 161 | 26% | 81% | 24% |
| | 30 - 39 | 121 | 30% | 135 | 26% | 136 | 20% | 154 | 27% | 151 | 24% | 25% | 25% |
| | 40 - 49 | 84 | 21% | 82 | 16% | 88 | 13% | 88 | 15% | 87 | 14% | 4% | 15% |
| | 50 and > | 36 | 9% | 61 | 12% | 70 | 10% | 55 | 10% | 63 | 10% | 75% | 10% |
| Total | 398 | 100% | 511 | 100% | 681 | 100% | 574 | 100% | 621 | 100% | 56% | 100% | |
| Certificate 29 or Fewer Units | 18 - 24 | 138 | 23% | 117 | 20% | 129 | 24% | 105 | 20% | 113 | 20% | -18% | 22% |
| | 25 - 29 | 146 | 25% | 153 | 26% | 118 | 22% | 143 | 27% | 158 | 28% | 8% | 26% |
| | 30 - 39 | 151 | 25% | 186 | 32% | 154 | 29% | 125 | 24% | 155 | 28% | 3% | 28% |
| | 40 - 49 | 98 | 16% | 83 | 14% | 96 | 18% | 87 | 17% | 79 | 14% | -19% | 16% |
| | 50 and > | 62 | 10% | 47 | 8% | 43 | 8% | 64 | 12% | 50 | 9% | -19% | 10% |
| | Total | 595 | 100% | 586 | 100% | 540 | 100% | 524 | 100% | 555 | 100% | -7% | 100% |

Source: SDCCD Information System

Note. In 2009/10, reporting procedures for high school diplomas were revised to correspond with MIS reporting requirements.

SDCCD Fact Book 2012

Table 3.16. SDCCD Annual Awards Conferred by Age (continued)

| | | 2007-08 | | 2008-09 | | 2009-10 | | 2010-11 | | 2011-12 | | % Change 07/08-11/12 | Districtwide Average 07/08-11/12 |
|---------------------------------|--------------|-------------|--------------|--------------|--------------|-------------|--------------|--------------|--------------|--------------|-------------|-------------------------|-------------------------------------|
| CE Certificate of Completion | Under 18 | 1 | 0% | 0 | 0% | 0 | 0% | 0 | 0% | 0 | 0% | -100% | 0% |
| | 18 - 24 | 93 | 16% | 162 | 14% | 165 | 18% | 171 | 15% | 210 | 15% | 126% | 15% |
| | 25 - 29 | 66 | 11% | 161 | 14% | 134 | 14% | 165 | 15% | 187 | 13% | 183% | 14% |
| | 30 - 39 | 131 | 23% | 332 | 28% | 256 | 27% | 307 | 28% | 361 | 26% | 176% | 27% |
| | 40 - 49 | 151 | 26% | 295 | 25% | 209 | 22% | 266 | 24% | 336 | 24% | 123% | 24% |
| | 50 and > | 139 | 24% | 227 | 19% | 178 | 19% | 204 | 18% | 313 | 22% | 125% | 20% |
| | Total | 581 | 100% | 1,177 | 100% | 942 | 100% | 1,113 | 100% | 1,407 | 100% | 142% | 100% |
| GED Certificate | Under 18 | 0 | 0% | 1 | 0% | 0 | 0% | 0 | 0% | 0 | 0% | --- | 0% |
| | 18 - 24 | 99 | 51% | 123 | 50% | 86 | 47% | 52 | 35% | 42 | 41% | -58% | 46% |
| | 25 - 29 | 37 | 19% | 45 | 18% | 26 | 14% | 32 | 22% | 28 | 27% | -24% | 19% |
| | 30 - 39 | 41 | 21% | 47 | 19% | 42 | 23% | 32 | 22% | 22 | 21% | -46% | 21% |
| | 40 - 49 | 11 | 6% | 21 | 8% | 24 | 13% | 19 | 13% | 11 | 11% | 0% | 10% |
| | 50 and > | 8 | 4% | 11 | 4% | 6 | 3% | 13 | 9% | 0 | 0% | -100% | 4% |
| | Total | 196 | 100% | 248 | 100% | 184 | 100% | 148 | 100% | 103 | 100% | -47% | 100% |
| High School Diploma | Under 18 | 9 | 2% | 13 | 2% | 0 | 0% | 0 | 0% | 0 | 0% | -100% | 2% |
| | 18 - 24 | 455 | 93% | 547 | 93% | 113 | 82% | 91 | 82% | 51 | 85% | -89% | 91% |
| | 25 - 29 | 18 | 4% | 17 | 3% | 14 | 10% | 11 | 10% | 6 | 10% | -67% | 5% |
| | 30 - 39 | 5 | 1% | 11 | 2% | 9 | 7% | 8 | 7% | 2 | 3% | -60% | 3% |
| | 40 - 49 | 1 | 0% | 0 | 0% | 1 | 1% | 1 | 1% | 1 | 2% | 0% | 0% |
| | 50 and > | 1 | 0% | 0 | 0% | 0 | 0% | 0 | 0% | 0 | 0% | -100% | 0% |
| Total | 489 | 100% | 588 | 100% | 137 | 100% | 111 | 100% | 60 | 100% | -88% | 100% | |
| Grand Total | 4,351 | 100% | 5,258 | 100% | 4,576 | 100% | 4,656 | 100% | 5,120 | 100% | 18% | 100% | |

Source: SDCCD Information System

Note. In 2009/10, reporting procedures for high school diplomas were revised to correspond with MIS reporting requirements.

SDCCD Fact Book 2012

Annual Transfer Volume: The annual transfer volume for all colleges in the district decreased 18%, from 3,181 in 2007/08 to 2,596 in 2011/12.

Figure 3.17. All Colleges Overall Annual Transfers

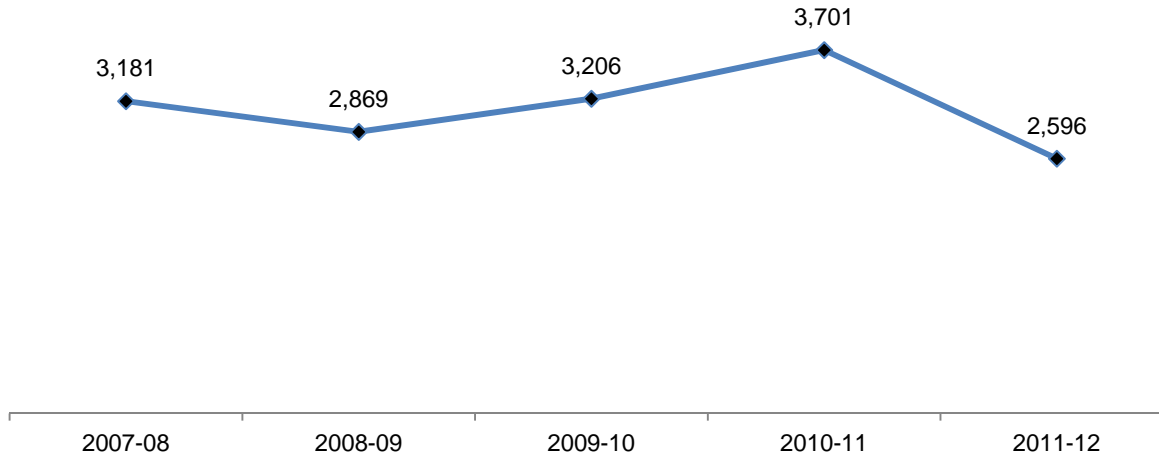


Table 3.17. All Colleges Overall Annual Transfers

| | 2007-08 | 2008-09 | 2009-10 | 2010-11 | 2011-12 | % Change 07/08-11/12 |
|--------------|---------|---------|---------|---------|---------|-------------------------|
| Total | 3,181 | 2,869 | 3,206 | 3,701 | 2,596 | -18% |

Source: SDCCD Information System

SDCCD Fact Book 2012

Annual Transfer Volume by Gender: Between 2007/08 and 2011/11, female students had a higher transfer volume (52%), on average, compared to their male student counterpart (48%). Furthermore, the transfer volume for both male and female students decreased between 2007/08 and 2011/12 (12% & 24%, respectively).

Figure 3.18. All Colleges Annual Transfers by Gender

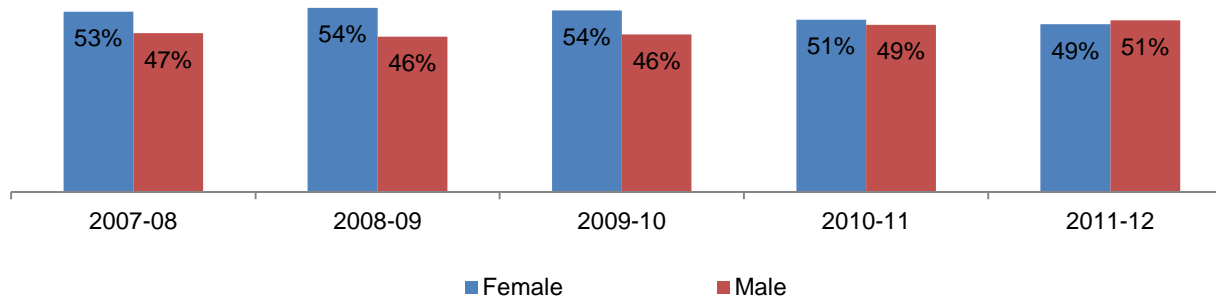


Table 3.18. All Colleges Annual Transfers by Gender

| | 2007-08 | | 2008-09 | | 2009-10 | | 2010-11 | | 2011-12 | | % Change 07/08-11/12 | All Colleges Average 07/08-11/12 |
|--------------|--------------|-------------|--------------|-------------|--------------|-------------|--------------|-------------|--------------|-------------|-------------------------|-------------------------------------|
| Female | 1,690 | 53% | 1,556 | 54% | 1,717 | 54% | 1,879 | 51% | 1,283 | 49% | -24% | 52% |
| Male | 1,490 | 47% | 1,313 | 46% | 1,488 | 46% | 1,822 | 49% | 1,313 | 51% | -12% | 48% |
| Unreported | 1 | 0% | 0 | 0% | 1 | 0% | 0 | 0% | 0 | 0% | -100% | 0% |
| Total | 3,181 | 100% | 2,869 | 100% | 3,206 | 100% | 3,701 | 100% | 2,596 | 100% | -18% | 100% |

Source: SDCCD Information System

SDCCD Fact Book 2012

Annual Transfer Volume by Ethnicity: Of those students who transferred from all colleges in the district, nearly half were White students (45%) on average. Both Latino (18%) and Asian/Pacific Islander (13%) students had the next highest transfer volume between 2007/08 and 2011/12. Most ethnic groups displayed a decreased trend in transfer volume. Filipino students decreased the most by 45%, from 199 in 2007/08 to 110 in 2011/12.

Figure 3.19. All Colleges Annual Transfers by Ethnicity

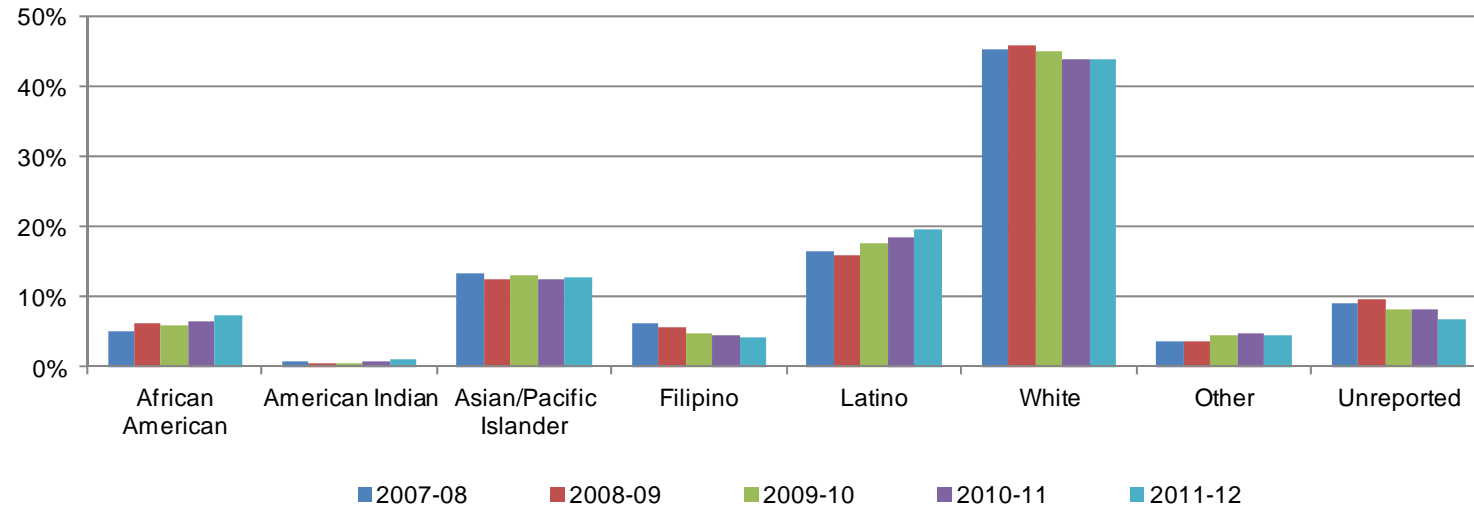


Table 3.19. All Colleges Annual Transfers by Ethnicity

| | 2007-08 | | 2008-09 | | 2009-10 | | 2010-11 | | 2011-12 | | % Change 07/08-11/12 | All Colleges Average 07/08-11/12 |
|------------------------|--------------|-------------|--------------|-------------|--------------|-------------|--------------|-------------|--------------|-------------|-------------------------|-------------------------------------|
| African American | 159 | 5% | 175 | 6% | 188 | 6% | 236 | 6% | 190 | 7% | 19% | 6% |
| American Indian | 22 | 1% | 18 | 1% | 19 | 1% | 28 | 1% | 25 | 1% | 14% | 1% |
| Asian/Pacific Islander | 429 | 13% | 362 | 13% | 420 | 13% | 465 | 13% | 332 | 13% | -23% | 13% |
| Filipino | 199 | 6% | 158 | 6% | 156 | 5% | 171 | 5% | 110 | 4% | -45% | 5% |
| Latino | 529 | 17% | 458 | 16% | 569 | 18% | 683 | 18% | 509 | 20% | -4% | 18% |
| White | 1,442 | 45% | 1,316 | 46% | 1,448 | 45% | 1,629 | 44% | 1,138 | 44% | -21% | 45% |
| Other | 113 | 4% | 103 | 4% | 142 | 4% | 182 | 5% | 119 | 5% | 5% | 4% |
| Unreported | 288 | 9% | 279 | 10% | 264 | 8% | 307 | 8% | 173 | 7% | -40% | 8% |
| Total | 3,181 | 100% | 2,869 | 100% | 3,206 | 100% | 3,701 | 100% | 2,596 | 100% | -18% | 100% |

Source: SDCCD Information System

SDCCD Fact Book 2012

Annual Transfer Volume by Age: The age groups with the highest transfer volume, on average, were students ages 18-24 (58%), students between ages 25 and 29 years old (25%), and students ages 30 to 39 years old (13%) between 2007/08 and 2011/12. Some of the age groups displayed a decreased trend in transfer volume, with students between ages 18 and 24 years old showing one of the greatest decreases (28%) between 2007/08 and 2011/12.

Figure 3.20. All Colleges Annual Transfers by Age

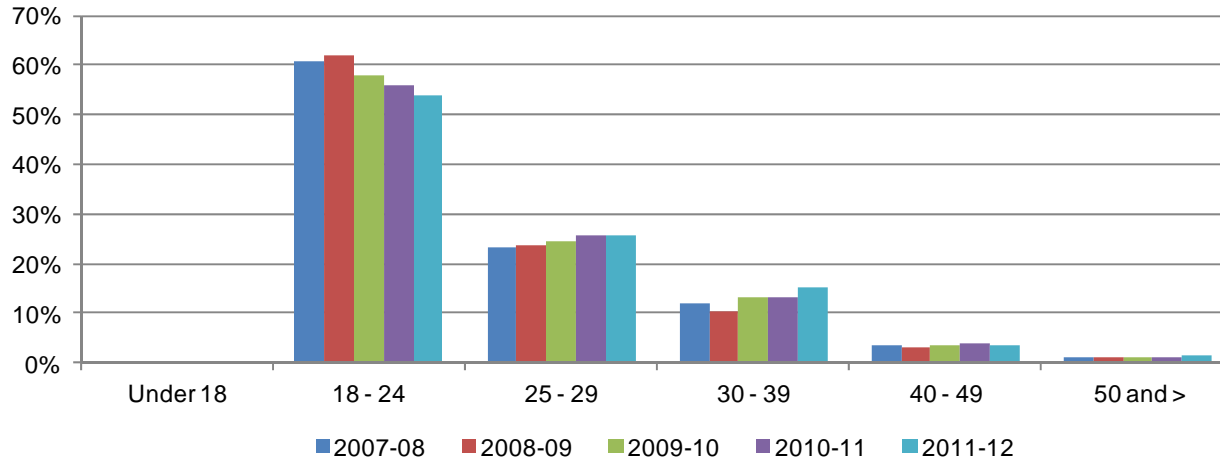


Table 3.20. All Colleges Annual Transfers by Age

| | 2007-08 | | 2008-09 | | 2009-10 | | 2010-11 | | 2011-12 | | % Change 07/08-11/12 | All Colleges Average 07/08-11/12 |
|--------------|--------------|-------------|--------------|-------------|--------------|-------------|--------------|-------------|--------------|-------------|-------------------------|-------------------------------------|
| Under 18 | 3 | 0% | 0 | 0% | 5 | 0% | 9 | 0% | 6 | 0% | 100% | 0% |
| 18 - 24 | 1,932 | 61% | 1,773 | 62% | 1,856 | 58% | 2,064 | 56% | 1,394 | 54% | -28% | 58% |
| 25 - 29 | 734 | 23% | 677 | 24% | 786 | 25% | 956 | 26% | 669 | 26% | -9% | 25% |
| 30 - 39 | 374 | 12% | 299 | 10% | 417 | 13% | 493 | 13% | 395 | 15% | 6% | 13% |
| 40 - 49 | 108 | 3% | 86 | 3% | 107 | 3% | 137 | 4% | 93 | 4% | -14% | 3% |
| 50 and > | 30 | 1% | 34 | 1% | 35 | 1% | 42 | 1% | 39 | 2% | 30% | 1% |
| Unreported | 0 | 0% | 0 | 0% | 0 | 0% | 0 | 0% | 0 | 0% | --- | 0% |
| Total | 3,181 | 100% | 2,869 | 100% | 3,206 | 100% | 3,701 | 100% | 2,596 | 100% | -18% | 100% |

Source: SDCCD Information System

SDCCD Fact Book 2012

Annual Transfer Volume by CSU-UC/Private (In-State)/Out-of-State: On average, nearly half of the all colleges in the district transfer volume were students who transferred into the California State University system (CSU) (48%), followed by Out-Of-State institutions (20%), University of California system (UC), (19%), and then In-State private institutions (14%). Students who transferred from all colleges in the district to an In-State private institution continued to show significant increases in transfer volume (30%), from 515 in 2007/08 to 670 in 2011/12.

Figure 3.21. All Colleges Annual Transfers by CSU-UC/Private (In-State)/Out-of-State

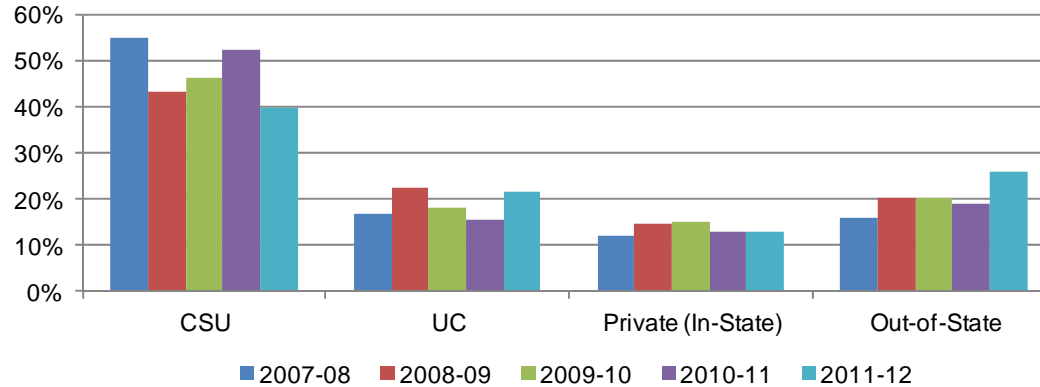


Table 3.21. All Colleges Annual Transfers by CSU-UC/Private (In-State)/Out-of-State

| | 2007-08 | | 2008-09 | | 2009-10 | | 2010-11 | | 2011-12 | | % Change 07/08-11/12 | All Colleges Average 07/08-11/12 |
|--------------------|--------------|-------------|--------------|-------------|--------------|-------------|--------------|-------------|--------------|-------------|-------------------------|-------------------------------------|
| CSU | 1,743 | 55% | 1,238 | 43% | 1,480 | 46% | 1,937 | 52% | 1,034 | 40% | -41% | 48% |
| UC | 537 | 17% | 639 | 22% | 583 | 18% | 576 | 16% | 560 | 22% | 4% | 19% |
| Private (In-State) | 386 | 12% | 415 | 14% | 486 | 15% | 483 | 13% | 332 | 13% | -14% | 14% |
| Out-of-State | 515 | 16% | 577 | 20% | 657 | 20% | 705 | 19% | 670 | 26% | 30% | 20% |
| Total | 3,181 | 100% | 2,869 | 100% | 3,206 | 100% | 3,701 | 100% | 2,596 | 100% | -18% | 100% |

Source: SDCCD Information System

Note. Out-of-State included both public and private 4-year institutions.

SDCCD Fact Book 2012

Annual Transfer Volume by CSU/UC: Of the total students who transferred from all colleges in the district, 66% transferred into either the California State University (CSU) or University of California (UC) system on average (48% & 19%, respectively). Of the total number of students who transferred to CSU or UC system, the majority of students went to CSU (72%) and nearly one-third went to UC (28%) on average. The CSU system showed a decreased trend in the number of students who transferred from all colleges in the district (41%), while the UC system showed an increased trend (4%) between 2007/08 and 2011/12.

Figure 3.22. All Colleges Annual Transfers by CSU/UC

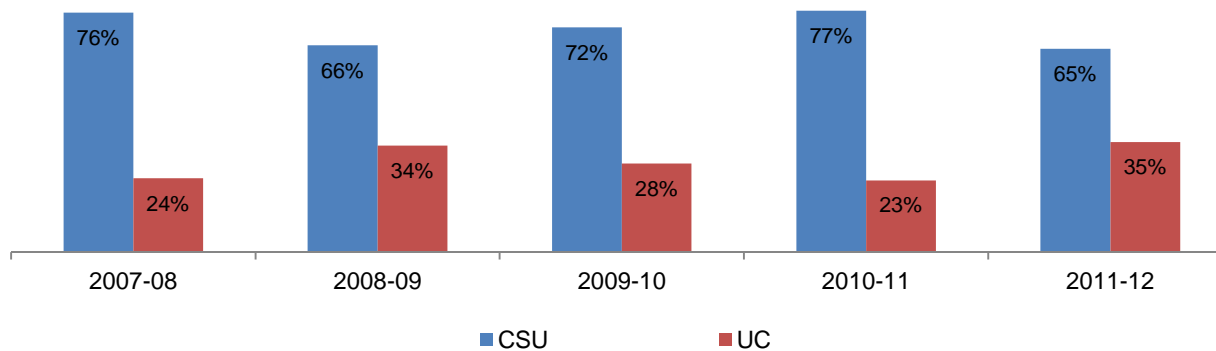


Table 3.22. All Colleges Annual Transfers by CSU/UC

| | 2007-08 | | 2008-09 | | 2009-10 | | 2010-11 | | 2011-12 | | % Change 07/08-11/12 | All Colleges Average 07/08-11/12 |
|--------------|--------------|-------------|--------------|-------------|--------------|-------------|--------------|-------------|--------------|-------------|-------------------------|-------------------------------------|
| CSU | 1,743 | 76% | 1,238 | 66% | 1,480 | 72% | 1,937 | 77% | 1,034 | 65% | -41% | 72% |
| UC | 537 | 24% | 639 | 34% | 583 | 28% | 576 | 23% | 560 | 35% | 4% | 28% |
| Total | 2,280 | 100% | 1,877 | 100% | 2,063 | 100% | 2,513 | 100% | 1,594 | 100% | -30% | 100% |

Source: SDCCD Information System

SDCCD Fact Book 2012

Annual Transfer Volume by Institution Type: Of those who transferred from all colleges within the district, on average, 24% transferred to a private institution and 76% transferred to a public institution. The private institutions showed an increased trend in the number of students who transferred from all colleges within the district (8%), while the public institutions showed a decreased trend (25%) between 2007/08 and 2011/12.

Figure 3.23. All Colleges Annual Transfers by Institution Type

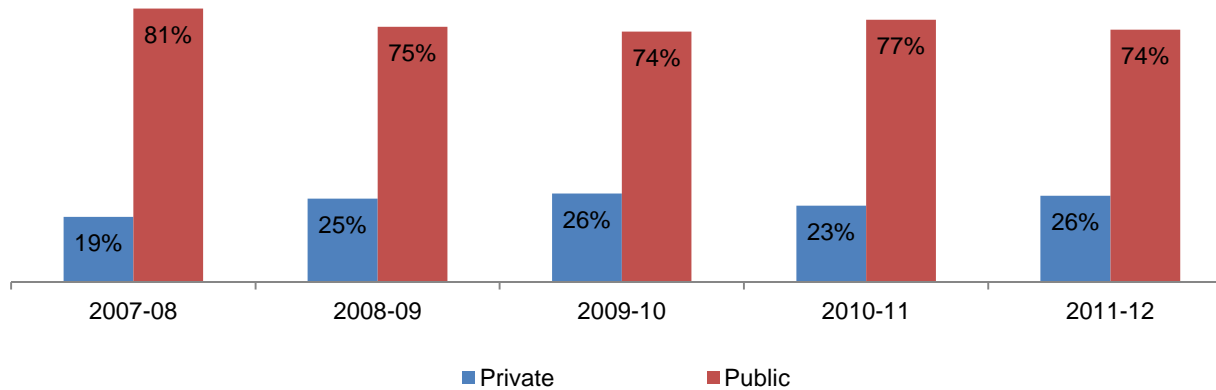


Table 3.23. All Colleges Annual Transfers by Institution Type

| | 2007-08 | | 2008-09 | | 2009-10 | | 2010-11 | | 2011-12 | | % Change 07/08-11/12 | All Colleges Average 07/08-11/12 |
|--------------|--------------|-------------|--------------|-------------|--------------|-------------|--------------|-------------|--------------|-------------|-------------------------|-------------------------------------|
| Private | 613 | 19% | 707 | 25% | 838 | 26% | 836 | 23% | 662 | 26% | 8% | 24% |
| Public | 2,568 | 81% | 2,162 | 75% | 2,368 | 74% | 2,865 | 77% | 1,934 | 74% | -25% | 76% |
| Total | 3,181 | 100% | 2,869 | 100% | 3,206 | 100% | 3,701 | 100% | 2,596 | 100% | -18% | 100% |

Source: SDCCD Information System

Note. Public and Private included both Out-of-State and In-State 4-year institutions.

**Section IV
Productivity and Efficiency**

SDCCD Fact Book 2012

This section of the Fact Book contains information on productivity and efficiency measures. The following describes in detail each of the measures:

- 1) FTES. The first measure reported in this section is a measure of productivity. FTES is a calculation of full-time equivalent students enrolled as of official census and is based on the total number of student contact hours. Starting in 2009-10 tutoring hours (course number 044) can only be claimed for Basic Skills classes at the credit colleges.
- 2) Enrollments. The second measure in this section of the report is also a measure of productivity. Enrollments are the number of seats enrolled or duplicated headcount as of a class census day (excludes those students who dropped or never attended prior to census day). Cancelled and tutoring classes are excluded. The measure counts all of the classes in which a single student is enrolled compared to unduplicated headcount which counts the student only once regardless of the number of classes he/she may be enrolled in.
- 3) Fill Rates. The third measure reported in this section is a measure of efficiency. Fill rates are the enrollment divided by the capacity or enrollment maximum defined in the curriculum as Cap. Apprenticeship, non-state supported, in-service, cancelled, tutoring, and classes with fewer than two enrollment capacity are excluded from the Fill Rate calculation.
- 4) Load. The fourth measure reported in this section is a measure of efficiency. Load is a calculation of the ratio of Weekly Student Contact Hours (WSCH) to Full-time Equivalent Faculty (WSCH/FTEF).

SDCCD Fact Book 2012

Annual FTES: The District showed a 2 % decrease in credit FTES between 2007/08 and 2011/12. Non-credit FTES showed a steady increase for the first two years reported then began a steady decline between 2008/09 and 2011/12 (21% between 2007/08 and 2011/12). Overall, FTES decreased Districtwide by 6% between 2007/08 and 2011/12.

Figure 4.1. SDCCD Resident & Non Resident Annual FTES

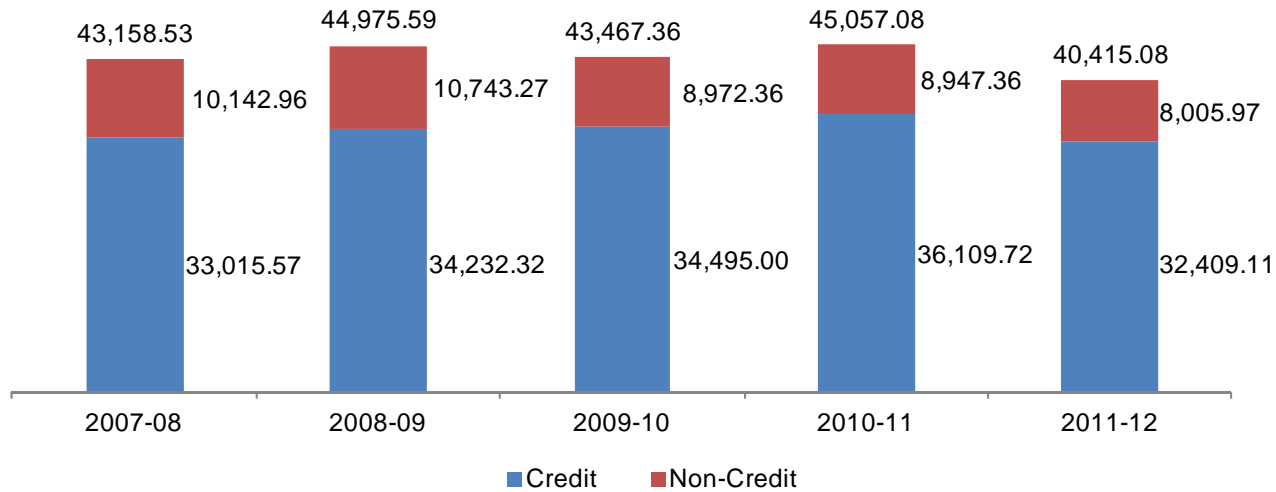


Table 4.1. SDCCD Resident & Non Resident Annual FTES

| | 2007-08 | 2008-09 | 2009-10 | 2010-11 | 2011-12 |
|--------------|------------------|------------------|------------------|------------------|------------------|
| Credit | 33,015.57 | 34,232.32 | 34,495.00 | 36,109.72 | 32,409.11 |
| Non-Credit | 10,142.96 | 10,743.27 | 8,972.36 | 8,947.36 | 8,005.97 |
| Total | 43,158.53 | 44,975.59 | 43,467.36 | 45,057.08 | 40,415.08 |

Source: SDCCD Information System

SDCCD Fact Book 2012

Enrollments: The enrollment trend for the online mode of instruction decreased for summer (93%), but increased in fall (44%), and spring (12%) terms between 2007/08 and 2011/12. The districtwide enrollment trend for the on campus mode of instruction showed a decline in the summer, fall, and spring terms (66%, 8%, & 8% respectively). Overall, enrollment trends for the District decreased in the summer, fall, and spring terms (69%, 4%, & 6% respectively) between 2007/08 and 2011/12.

Figure 4.2.1. SDCCD Enrollments (Summer)

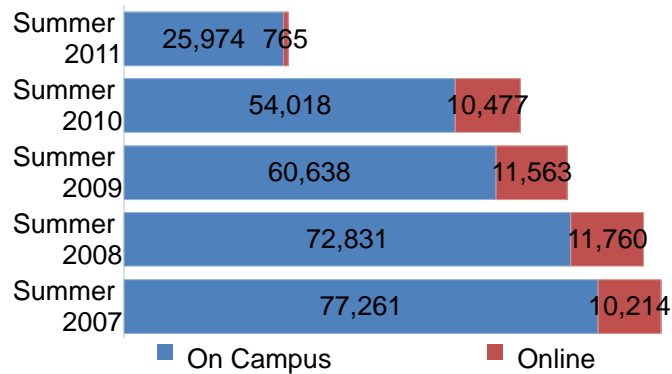


Figure 4.2.2. SDCCD Enrollments (Fall)

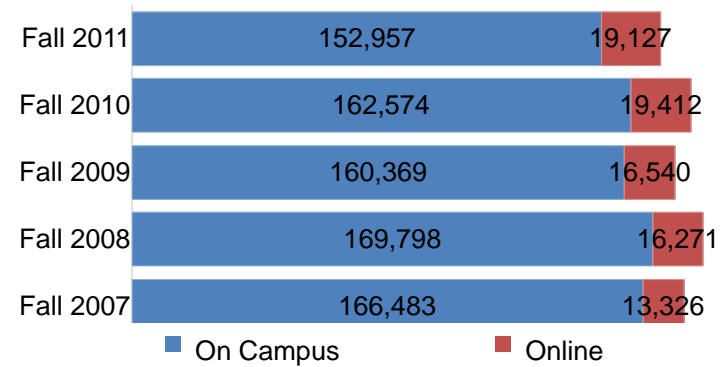


Figure 4.2.3. SDCCD Enrollments (Spring)

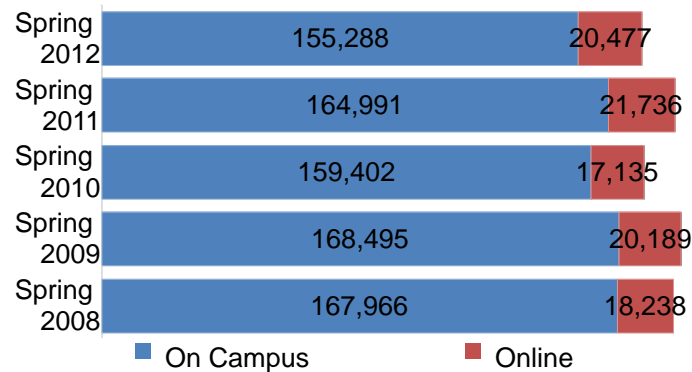


Table 4.2. SDCCD Enrollments

| | On Campus | Online | Total |
|--------------|----------------|---------------|----------------|
| Summer 2007 | 77,261 | 10,214 | 87,475 |
| Summer 2008 | 72,831 | 11,760 | 84,591 |
| Summer 2009 | 60,638 | 11,563 | 72,201 |
| Summer 2010 | 54,018 | 10,477 | 64,495 |
| Summer 2011 | 25,974 | 765 | 26,739 |
| Total | 290,722 | 44,779 | 335,501 |

| | On Campus | Online | Total |
|--------------|----------------|---------------|----------------|
| Fall 2007 | 166,483 | 13,326 | 179,809 |
| Fall 2008 | 169,798 | 16,271 | 186,069 |
| Fall 2009 | 160,369 | 16,540 | 176,909 |
| Fall 2010 | 162,574 | 19,412 | 181,986 |
| Fall 2011 | 152,957 | 19,127 | 172,084 |
| Total | 812,181 | 84,676 | 896,857 |

| | On Campus | Online | Total |
|--------------|----------------|---------------|----------------|
| Spring 2008 | 167,966 | 18,238 | 186,204 |
| Spring 2009 | 168,495 | 20,189 | 188,684 |
| Spring 2010 | 159,402 | 17,135 | 176,537 |
| Spring 2011 | 164,991 | 21,736 | 186,727 |
| Spring 2012 | 155,288 | 20,477 | 175,765 |
| Total | 816,142 | 97,775 | 913,917 |

Source: SDCCD Information System

Note. Includes all enrolled students as of official census.

SDCCCD Fact Book 2012

Fill Rates: The overall fill rates for all colleges in the district were the highest in the fall and spring terms, on average, when compared to the summer terms (87%, 88%, & 79%, respectively) between 2007/08 and 2011/12. On average, fill rates for the on campus mode of instruction across fall and spring terms (both 88%, respectively) were similar when compared to the online mode of instruction (87% & 88%, respectively). In contrast, the fill rates for the online mode of instruction was higher for the summer term (82%) when compared to the on campus mode of instruction for the summer term (77%).

Figure 4.3.1. All Colleges Fill Rates (Summer)

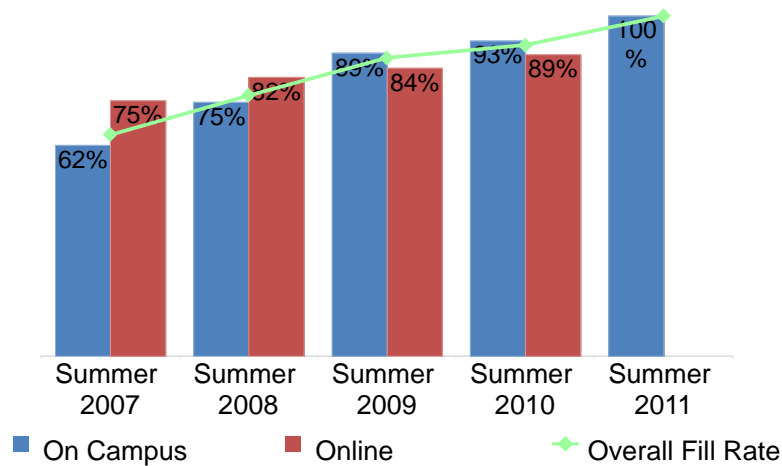


Figure 4.3.2. All Colleges Fill Rates (Fall)

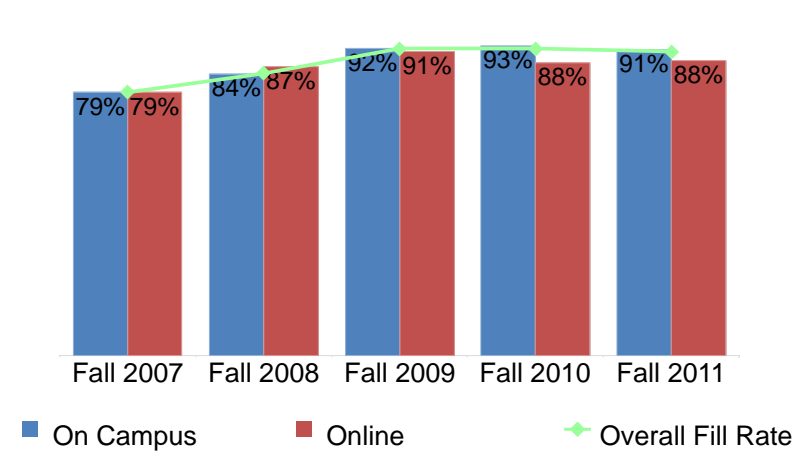
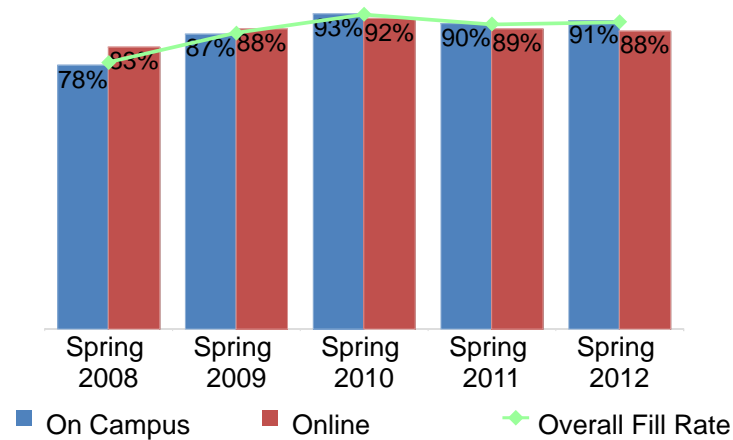


Figure 4.3.3. All Colleges Fill Rates (Spring)



SDCCD Fact Book 2012

Table 4.3.1. All Colleges Enrollments and Fill Rates

| | On Campus | | | Online | | | All Colleges Total | | |
|--------------|----------------|----------------|------------|---------------|---------------|------------|--------------------|----------------|------------|
| | Enrollment | Capacity | Fill Rate | Enrollment | Capacity | Fill Rate | Enrollment | Capacity | Fill Rate |
| Summer 2007 | 27,440 | 43,235 | 62% | 9,974 | 13,288 | 75% | 37,414 | 56,523 | 65% |
| Summer 2008 | 28,133 | 38,330 | 75% | 11,265 | 13,756 | 82% | 39,398 | 52,086 | 77% |
| Summer 2009 | 28,444 | 32,954 | 89% | 10,818 | 12,807 | 84% | 39,262 | 45,761 | 88% |
| Summer 2010 | 26,000 | 28,968 | 93% | 9,729 | 10,979 | 89% | 35,729 | 39,947 | 91% |
| Summer 2011 | 3,555 | 3,176 | 100% | 251 | 0 | --- | 3,806 | 3,176 | 100% |
| Total | 113,572 | 146,663 | 77% | 42,037 | 50,830 | 82% | 155,609 | 197,493 | 79% |

| | On Campus | | | Online | | | All Colleges Total | | |
|--------------|----------------|----------------|------------|---------------|---------------|------------|--------------------|----------------|------------|
| | Enrollment | Capacity | Fill Rate | Enrollment | Capacity | Fill Rate | Enrollment | Capacity | Fill Rate |
| Fall 2007 | 104,883 | 133,127 | 79% | 12,998 | 16,510 | 79% | 117,881 | 149,637 | 79% |
| Fall 2008 | 107,088 | 125,056 | 84% | 15,577 | 17,957 | 87% | 122,665 | 143,013 | 85% |
| Fall 2009 | 107,486 | 115,881 | 92% | 15,943 | 17,500 | 91% | 123,429 | 133,381 | 92% |
| Fall 2010 | 112,881 | 120,781 | 93% | 18,534 | 21,140 | 88% | 131,415 | 141,921 | 92% |
| Fall 2011 | 107,893 | 117,450 | 91% | 18,528 | 20,936 | 88% | 126,421 | 138,386 | 91% |
| Total | 540,231 | 612,295 | 88% | 81,580 | 94,043 | 87% | 621,811 | 706,338 | 87% |

| | On Campus | | | Online | | | All Colleges Total | | |
|--------------|----------------|----------------|------------|---------------|----------------|------------|--------------------|----------------|------------|
| | Enrollment | Capacity | Fill Rate | Enrollment | Capacity | Fill Rate | Enrollment | Capacity | Fill Rate |
| Spring 2008 | 103,270 | 131,837 | 78% | 17,926 | 21,563 | 83% | 121,196 | 153,400 | 79% |
| Spring 2009 | 106,850 | 121,608 | 87% | 19,522 | 22,031 | 88% | 126,372 | 143,639 | 87% |
| Spring 2010 | 107,143 | 114,619 | 93% | 16,385 | 17,901 | 92% | 123,528 | 132,520 | 93% |
| Spring 2011 | 112,918 | 123,933 | 90% | 20,726 | 23,407 | 89% | 133,644 | 147,340 | 90% |
| Spring 2012 | 110,640 | 119,526 | 91% | 19,754 | 22,447 | 88% | 130,394 | 141,973 | 91% |
| Total | 540,821 | 611,523 | 88% | 94,313 | 107,349 | 88% | 635,134 | 718,872 | 88% |

Source: SDCCD Information System

Note. The Enrollment and Capacity in the above table are not part of the Fill Rate calculation.

SDCCD Fact Book 2012

Load: The Load values increased between Fall 2007 and Fall 2011 (496 to 578). Similarly, in the Spring terms the Load values showed an increase between Spring 2008 and Spring 2012 (495 to 571). The statewide benchmark for Load is 525 for a 17.5 week semester. SDCCD has set an internal benchmark of 557, which is commensurate to its 16.5 week semester.

Figure 4.4.1. All Colleges Load (Fall)

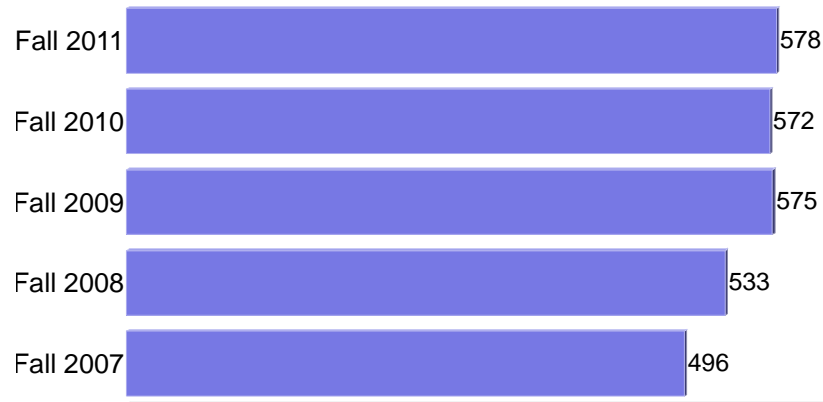


Figure 4.4.2. All Colleges Load (Spring)

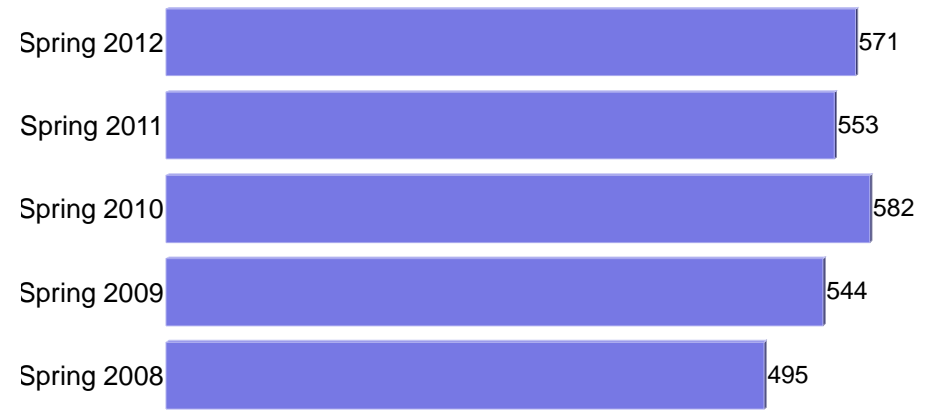


Table 4.4. All Colleges Load

| | Load |
|-------------|------|
| Fall 2007 | 496 |
| Fall 2008 | 533 |
| Fall 2009 | 575 |
| Fall 2010 | 572 |
| Fall 2011 | 578 |
| Spring 2008 | 495 |
| Spring 2009 | 544 |
| Spring 2010 | 582 |
| Spring 2011 | 553 |
| Spring 2012 | 571 |

Source: SDCCD Information System

Section V
Human Resources

SDCCD Fact Book 2012

This section of the Fact Book contains information on the number and classification of employees during the Fall 2011 semester. The information is reported as follows:

- 1) Gender
- 2) Ethnicity
- 3) Employment Type

SDCCD Fact Book 2012

Fall 2011 Employee Breakdown: There were a total of 4,345 employees working in the District as of Fall 2011. The majority of employees were faculty (41% adjunct & 13% contract), 21% of the employees were non-academic hourly, 19% were classified staff, and the remaining were management or supervisory staff (2% & 4%, respectively).

The ethnic breakdown showed that White employees comprised 51% of the total employee population, followed by Latino employees (17%), and Asian employees constituted 12% of the districtwide workforce. Among classified staff, White employees comprised 36% of the employees and made up two-thirds of the teaching faculty positions (64%) compared to all other ethnic groups. White employees constituted approximately half (52%) of management and not quite half of the supervisory positions (45%). African American employees comprised nearly one-tenth (8%) of the management positions and 12% of the supervisory positions. Latino employees constituted approximately one-tenth (11%) of the supervisory positions, 7% of the management positions, 12% of faculty positions, and 23% of the classified staff positions.

Figure 5.1. SDCCD Fall 2011 Employees by Employment Type

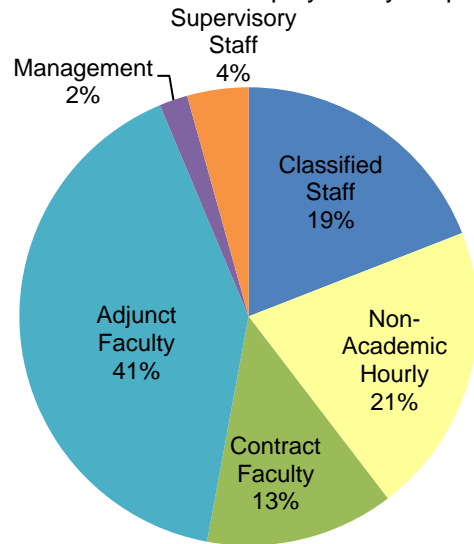
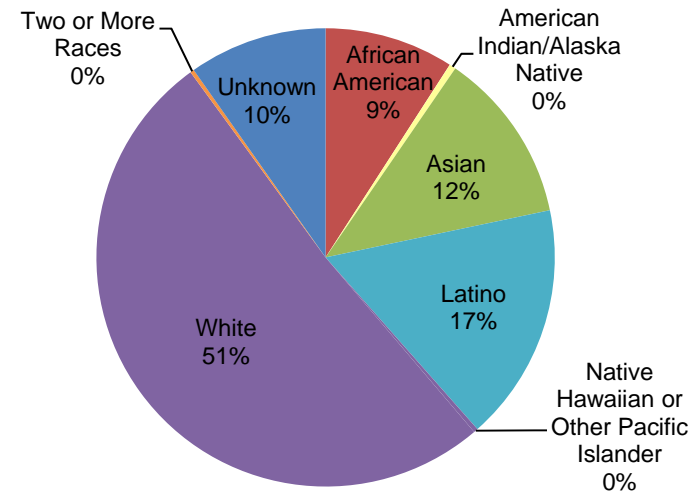


Figure 5.2. SDCCD Fall 2011 Employees by Ethnicity



SDCCD Fact Book 2012

Table 5.1. SDCCD Fall 2011 Employees by Ethnicity

| | African American | | American Indian/ Alaska Native | | Asian | | Latino | | Native Hawaiian or Other Pacific | | White | | Two or More Races | | Unreported | | Total |
|-----------------------------|------------------|-----|--------------------------------|----|-------|-----|--------|-----|----------------------------------|----|-------|-----|-------------------|----|------------|-----|-------|
| Total Employees: | 396 | 9% | 20 | 0% | 527 | 12% | 729 | 17% | 13 | 0% | 2,224 | 51% | 12 | 0% | 424 | 10% | 4,345 |
| Male: | 176 | 9% | 10 | 1% | 230 | 12% | 306 | 16% | 6 | 0% | 1,008 | 52% | 4 | 0% | 206 | 11% | 1,946 |
| Female: | 220 | 9% | 10 | 0% | 297 | 12% | 423 | 18% | 7 | 0% | 1,216 | 51% | 8 | 0% | 218 | 9% | 2,399 |
| Classified Staff : | 117 | 14% | 4 | 0% | 148 | 18% | 189 | 23% | 4 | 0% | 295 | 36% | 0 | 0% | 72 | 9% | 829 |
| Male: | 51 | 14% | 1 | 0% | 68 | 19% | 73 | 21% | 1 | 0% | 131 | 37% | 0 | 0% | 30 | 8% | 355 |
| Female: | 66 | 14% | 3 | 1% | 80 | 17% | 116 | 24% | 3 | 1% | 164 | 35% | 0 | 0% | 42 | 9% | 474 |
| Non-Academic Hourly: | 117 | 13% | 2 | 0% | 162 | 18% | 234 | 26% | 7 | 1% | 286 | 32% | 4 | 0% | 80 | 9% | 892 |
| Male: | 54 | 15% | 1 | 0% | 65 | 18% | 81 | 22% | 4 | 1% | 123 | 33% | 0 | 0% | 41 | 11% | 369 |
| Female: | 63 | 12% | 1 | 0% | 97 | 19% | 153 | 29% | 3 | 1% | 163 | 31% | 4 | 1% | 39 | 7% | 523 |
| Contract Faculty: | 42 | 7% | 4 | 1% | 42 | 7% | 80 | 14% | 0 | 0% | 334 | 58% | 0 | 0% | 76 | 13% | 578 |
| Male: | 21 | 9% | 2 | 1% | 15 | 6% | 37 | 15% | 0 | 0% | 137 | 55% | 0 | 0% | 35 | 14% | 247 |
| Female: | 21 | 6% | 2 | 1% | 27 | 8% | 43 | 13% | 0 | 0% | 197 | 60% | 0 | 0% | 41 | 12% | 331 |
| Adjunct Faculty: | 91 | 5% | 9 | 1% | 139 | 8% | 199 | 11% | 2 | 0% | 1,179 | 67% | 6 | 0% | 146 | 8% | 1,771 |
| Male: | 40 | 5% | 5 | 1% | 63 | 8% | 100 | 12% | 1 | 0% | 558 | 66% | 3 | 0% | 70 | 8% | 840 |
| Female: | 51 | 5% | 4 | 0% | 76 | 8% | 99 | 11% | 1 | 0% | 621 | 67% | 3 | 0% | 76 | 8% | 931 |
| Management: | 7 | 8% | 0 | 0% | 6 | 7% | 6 | 7% | 0 | 0% | 45 | 52% | 0 | 0% | 23 | 26% | 87 |
| Male: | 1 | 2% | 0 | 0% | 3 | 7% | 2 | 5% | 0 | 0% | 21 | 49% | 0 | 0% | 16 | 37% | 43 |
| Female: | 6 | 14% | 0 | 0% | 3 | 7% | 4 | 9% | 0 | 0% | 24 | 55% | 0 | 0% | 7 | 16% | 44 |
| Supervisory Staff: | 22 | 12% | 1 | 1% | 30 | 16% | 21 | 11% | 0 | 0% | 85 | 45% | 2 | 1% | 27 | 14% | 188 |
| Male: | 9 | 10% | 1 | 1% | 16 | 17% | 13 | 14% | 0 | 0% | 38 | 41% | 1 | 1% | 14 | 15% | 92 |
| Female: | 13 | 14% | 0 | 0% | 14 | 15% | 8 | 8% | 0 | 0% | 47 | 49% | 1 | 1% | 13 | 14% | 96 |

Source: SDCCD Information System

Table 5.2. SDCCD Employees by Gender and Employment Status

| Gender | | Employment Status | |
|--------|-----|--------------------|-----|
| Female | 55% | Full-Time/Contract | 39% |
| Male | 45% | Hourly/Adjunct | 61% |

Source: SDCCD Information System