



# Mesa College Basic Skills

## Fall 2011

10/07/2011



Office of Institutional Research and Planning

# Overview

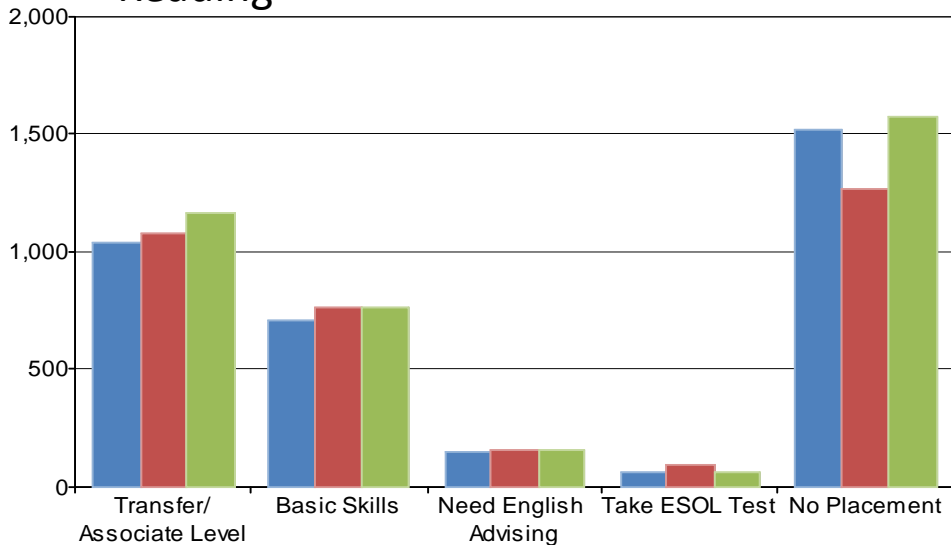
- Follow-up to 2010 Basic Skills Report
- Information used for evaluation, planning and decision-making
- Key Questions in 2011 Report:
  1. What proportion of incoming students place into BS courses?
  2. How have the enrollments in BS courses changed over five years?
  3. What is the persistence rate of students in BS courses?
  4. How well do students perform in their BS courses?
  5. What is the BS improvement rate?
  6. What is the volume and percent of matriculation services being used?

# Overview (cont.)

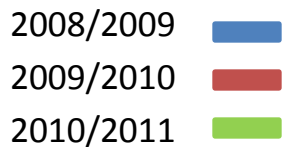
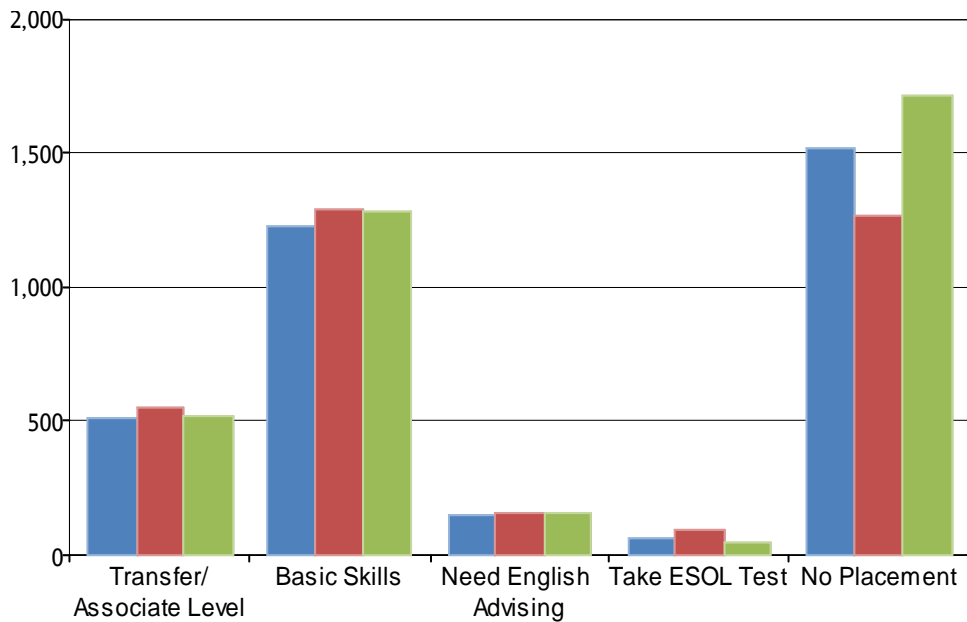
- Report Contents
  - **Placement**
  - Enrollment
  - **Persistence**
  - Retention & Success
  - **Improvement Rate (new)**
  - **Matriculation Services (new)**
- Research Examined from Multiple Perspectives
  - Comparison by ethnicity
  - Five year trend analysis
  - Five year average benchmarks
  - Statewide benchmarks

# Placement Trends

## Reading

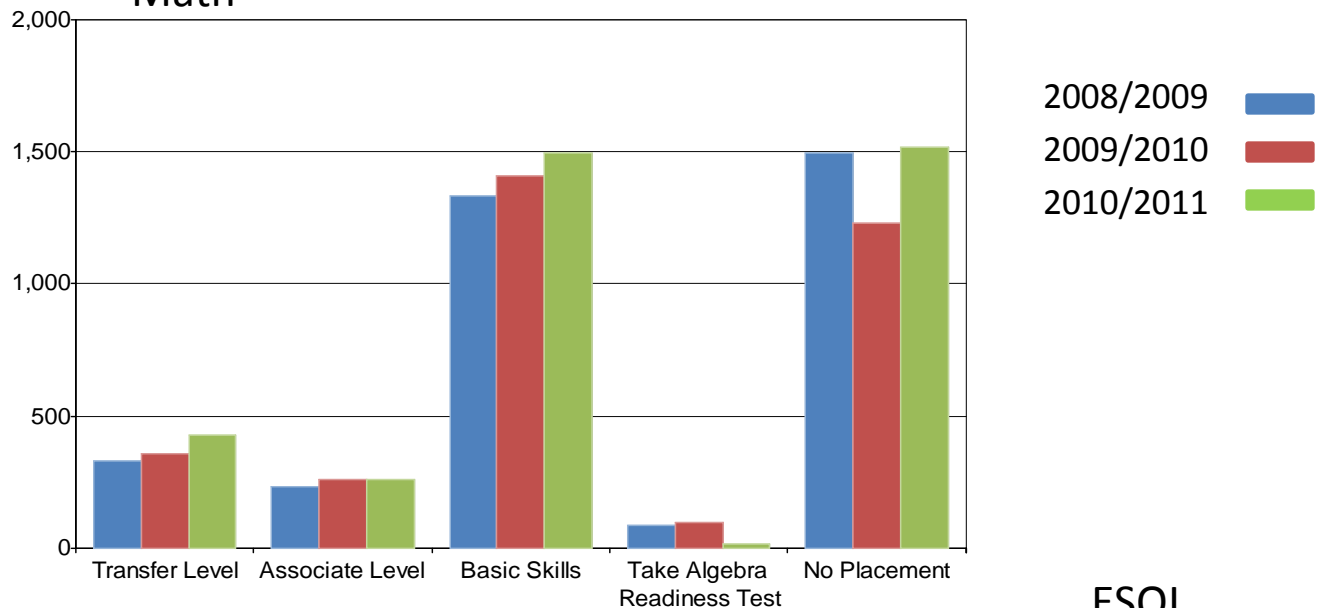


## Writing

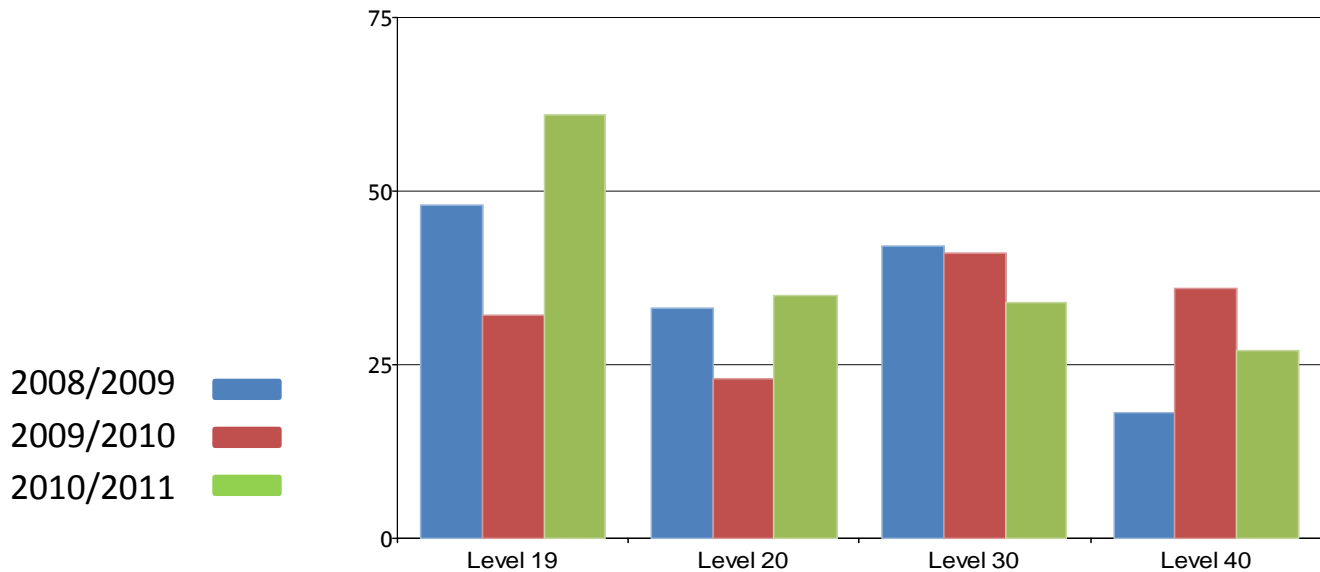


# Placement Trends

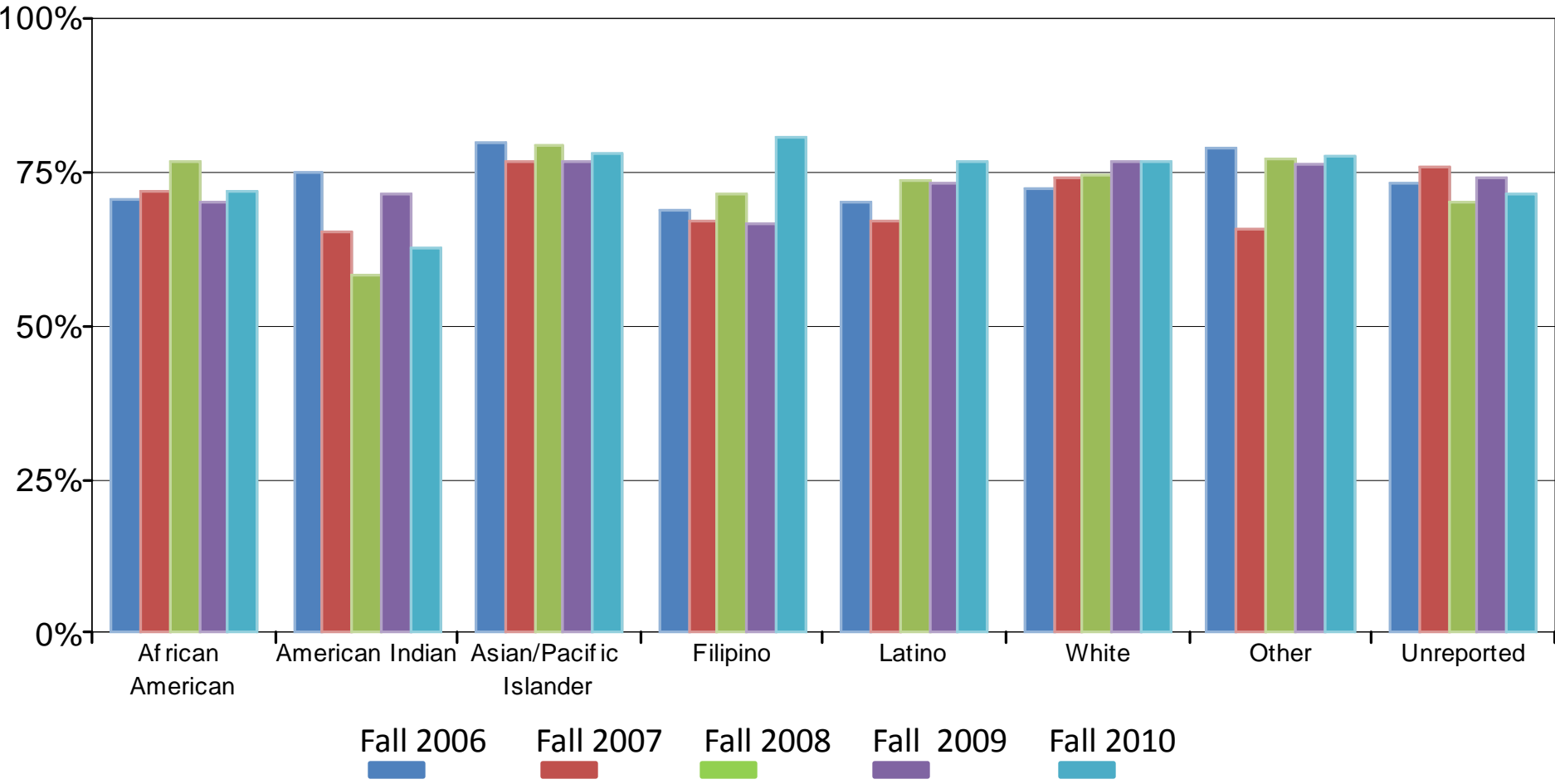
## Math



## ESOL



# Fall to Spring Persistence by Ethnicity



# Improvement Rates

Table 25. Mesa College Improvement Rates for Credit Basic Skills Courses

	2004-05 to 2006-07	2005-06 to 2007-08	2006-07 to 2008-09
Math Course Improvement Rate	43%	43%	42%
English Course Improvement Rate	63%	50%	63%
ESL Courses Improvement Rate	56%	58%	54%
All Basic Skills Courses Improvement Rate (Mathematics + English)	48%	45%	49%

Source: California Community College Chancellor's Office MIS

Table 26. Statewide Improvement Rates for Credit Basic Skills Courses

	2004-05 to 2006-07	2005-06 to 2007-08	2006-07 to 2008-09
Math Course Improvement Rate	46%	47%	48%
English Course Improvement Rate	57%	57%	59%
ESL Courses Improvement Rate	49%	50%	50%
All Basic Skills Courses Improvement Rate (Mathematics + English)	51%	52%	53%

Source: California Community College Chancellor's Office MIS

# Matriculation Services

Table 27. Mesa College First-Time Students Receiving Matriculation Services

	Total Students	Received Orientation	Percent	Received Placement Assessment	Percent	Received Counseling	Percent	Received Follow-up	Percent
Fall 2006	2,743	1,416	52%	1,579	58%	1,096	40%	479	17%
Fall 2007	3,043	1,589	52%	1,757	58%	1250	41%	787	26%
Fall 2008	3,237	1,397	43%	1,494	46%	486	15%	621	19%
<b>Total/Ave</b>	<b>9,023</b>	<b>4,402</b>	<b>49%</b>	<b>4,830</b>	<b>54%</b>	<b>2,832</b>	<b>31%</b>	<b>1,887</b>	<b>21%</b>

Source: California Community College Chancellor's Office MIS



IRRP

<http://research.sdccd.edu/>