

SDCCD MEASURE HH BOND PROGRAM PROJECT PROFILE — SAN DIEGO COLLEGE OF CONTINUING EDUCATION MESA BUILDING ENVELOPE IMPROVEMENTS

Project Teams

General Contractor	TBD
Architect	MOSHER DREW ARCHITECTS
Structural Engineer	MIYAMOTO
Civil Engineer	LATITUDE33
Mech./ Elect. Engineer	GLUMAC
Executive Const. Manager	BEN BAKER

Project Schedule

Programming Complete	Design and DSA Approval	Construction Completion (Est.)	FFE & Move-In (Est.)
September 2025	Design: July 2026 DSA: November 2026	July 2028	Oct 2028

Current Status/Phase: Schematic Design

Project Insights

- The AE team has evaluated the existing envelope systems and mechanical systems to verify current conditions, assess capacity, and determine feasibility for improvements.
- Findings were presented to SDCCD leadership and the team will move forward with the proposed recommendations, including the direction to fully enclose the building exterior envelope.
- Architects Mosher Drew has been contracted to continue design services.
- Stakeholder meetings for schematic design will begin in February and will continue through Q2 2026.

Project News & Information

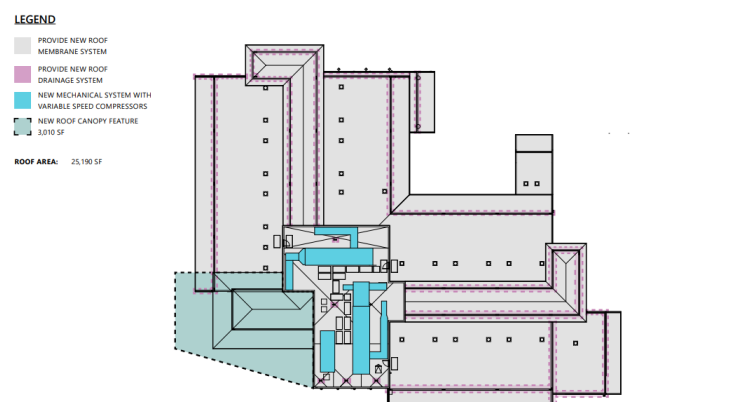
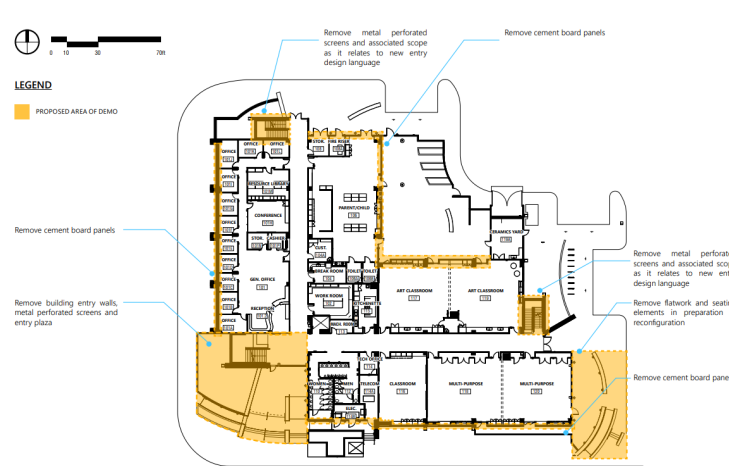
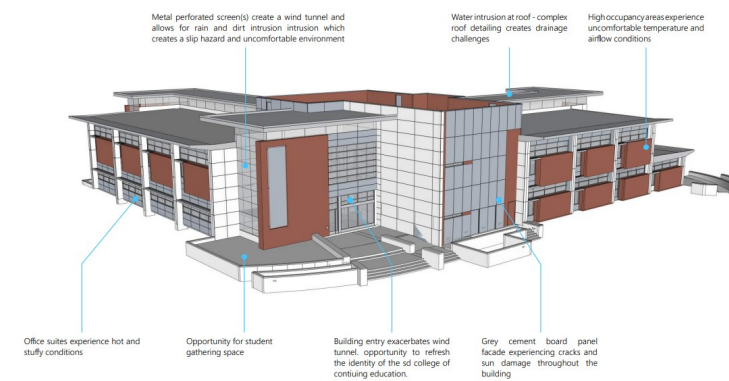
Reference Links:

Additional resources, articles, and links related to this project will appear here when available. For comprehensive information about Measure HH and all ongoing projects, please explore [the Measure HH website](#).

Project Features

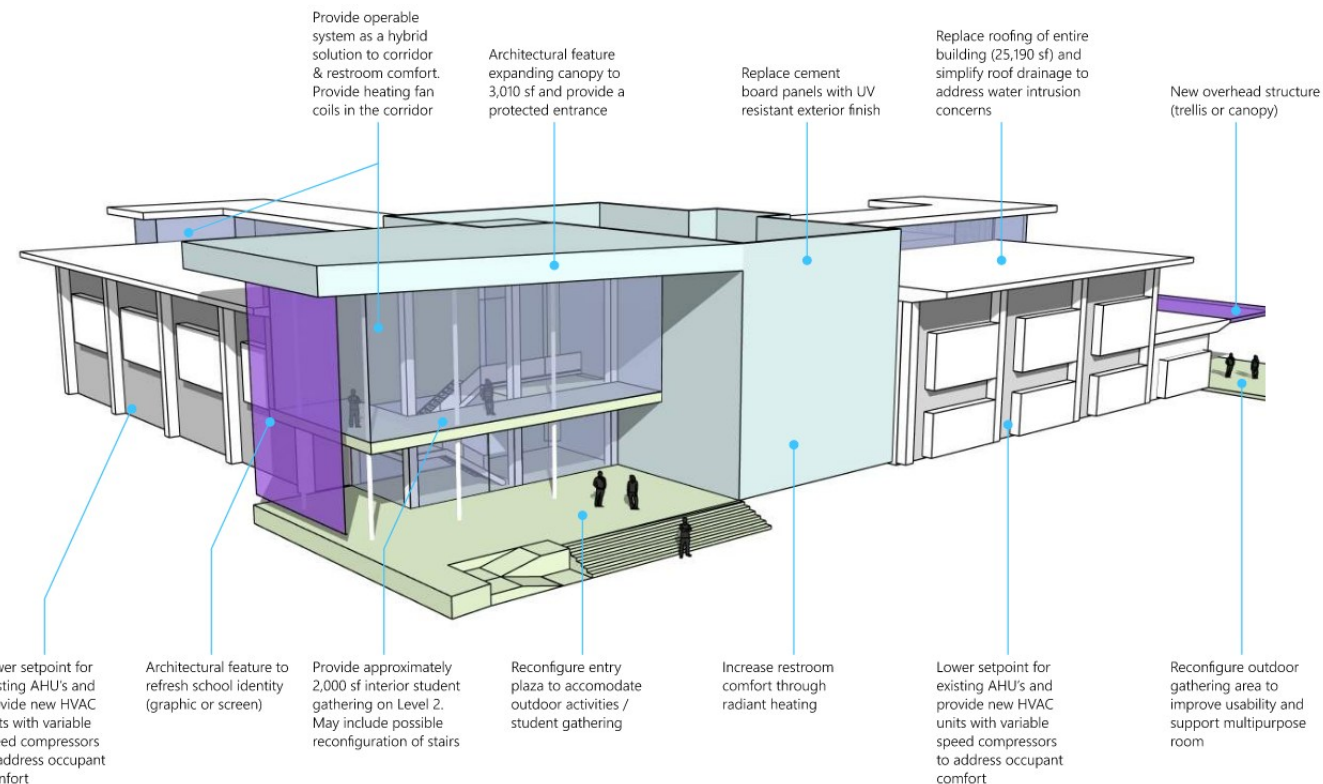
The San Diego College of Continuing Education Mesa Building Envelope Improvements project is focused on improvements which contribute to a more welcoming and efficient learning environment while aligning with the campus's long-term Master Plan. Project improvements include:

- Architectural modifications to the exterior finish materials of the existing two-story, 38,500-square-foot facility
- Upgrades to the building's heating and cooling systems, specifically along corridors and stairs
- Enhancements to improve safety, comfort, and functionality for students and staff.
- Accessibility compliance upgrades
- Roofing improvements
- Reconfiguration of the main building entry to support security, visibility, and program identity



CONCEPT-LEVEL PLANS

Subject to revision. Not a final design.



Project Map



7350 Armstrong Pl, San Diego, CA 92111