



SDCCD MESA COLLEGE - CAPITAL RENOVATION RENEWALS

CUMMING GROUP

Storm Drain

Architect:	Lance L
Engineer (Civil):	Naslan
Region 3 Project Manager:	Leon Cavallo
Construction Manager:	Steve Evanco
Inspector:	Phil San Filippo
Contractor:	Align Builders

Chiller Condenser-Coil Replacement (Bldg G10)

Architect:	N/A
Engineer (Mech):	N/A
Region 3 PM:	Leon C.
Construction Manager:	Steve E.
Inspector:	TBD
Contractor:	ACCO

Pool Media and Filter Addition

Architect:	N/A
Engineer:	N/A
Region 3 PM:	Leon C.
Construction Manager:	Steve E.
Inspector:	TBD
Contractor:	Noor Systems (KSI)

Roof Replacement (Multiple)

Architect:	Pending
Engineer:	N/A
Region 3 PM:	Leon C.
Construction Manager:	Steve E.
Inspector:	TBD
Contractor:	TBD

HVAC Replacement (Multiple)

Architect:	N/A
Engineer (Mech):	Pending
Region 3 PM:	Leon C.
Construction Manager:	Steve E.
Inspector:	TBD
Contractor:	TBD

Projects (Bldg)

Projects (Bldg)	Status	Duration	Estimate	Status
	Phase	Est. Date	Construct Cost	Description
Storm Drain	Construction	12/16/25	\$1,245,513	Align Builders awarded. The NTP is scheduled for 7/14, with Substantial Completion date of 12/16/25.
Chiller Condenser-Coil Replacement	Award	7/7/25	\$60,427	For Building G10, currently completing final scope review, and then contract by 7/7/25 (College Buys Agmt). This is a re-placement contract.
Pool Media / Filter Replacement	Award	7/7/25	\$72,100	Awaiting on updated proposal from KSI. This is a replacement contract.
Roofs Replacement	Planning	6/30/25	TBD	Multiple bldgs.: P,LRC, Harry West Gym, Fitness Center, MS, Central Plant, awaiting design proposal submissions
HVAC Replacement	Planning	7/14/25	TBD	System upgrades being reviewed, awaiting design proposal from as –needed engineer selection.

Project Insight (Look Ahead)

Storm Drain:

- 7/2/25: CBA monthly meeting
- 7/9/25: Approximate NTP date
- 7/14/25: Construction starts

Chiller Condenser-Coil Replacement (Bldg G) :

- 6/26/25: Board recommendation for award
- 7/1/25: Final addenda is due
- 7/14/25: Board Approval

Pool Media/Filter Addition:

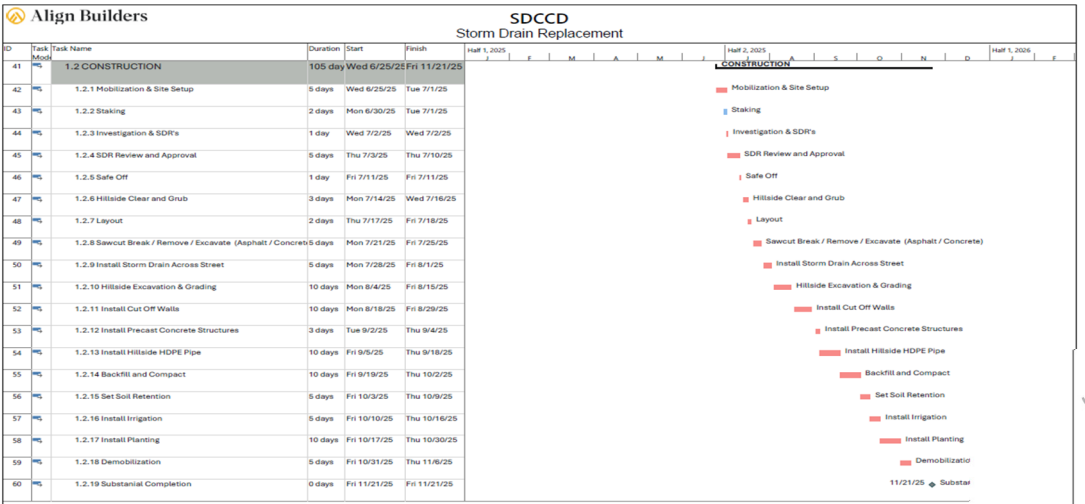
- 6/26/25: Board recommendation for award
- 7/1/25: Final addenda is due
- 7/14/25: Board Approval

Roof Replacement (Multiple Bldgs.):

- 6/30/25: Finalize bid packaging scope review
- 7/7/25: Awaiting design proposal
- 7/14/25: Design start for DSA submission

HVAC Replacement (Multiple Bldgs.):

Same process as outlined for the “Roofs”



Upcoming Projects

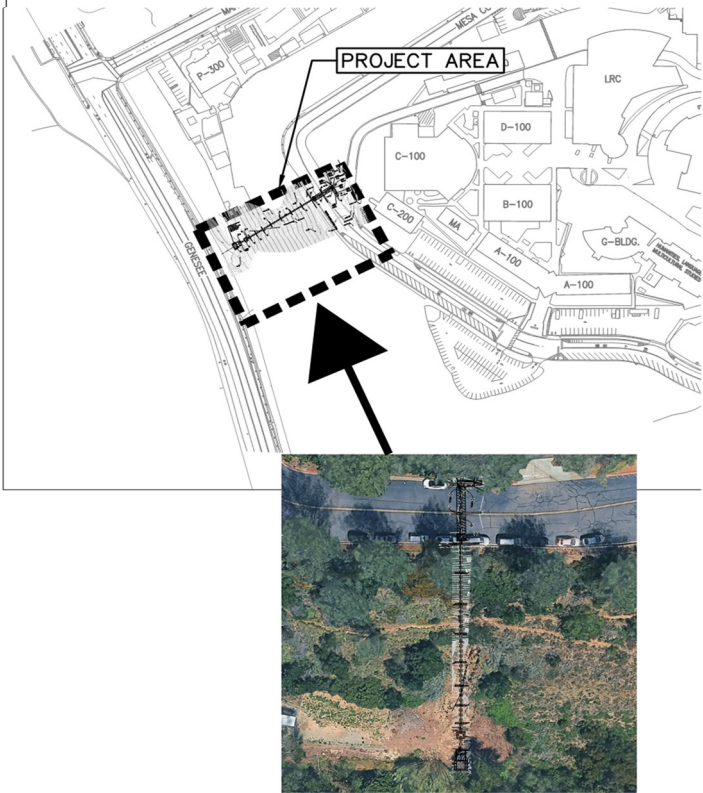
- The following projects are scheduled to happen with the next 3 weeks:
- Electrical site scope assessments (Lighting, generator & Fire Alarm)
 - Intrusion Alarm scope definition
 - Mechanical & Plumbing scope definition

Project Site Plan

Mesa College is located at 7250 Mesa College Drive, the projects are within the boundaries of Mesa College Circle to Broadway (north to south) and Marlesta Drive to Genesee Avenue (east to west) (See site plan on this sheet).

Buildings and Programs (w/scope identified)

Administration (A1), B, BT, C1-CT, C2, CDC, CE, CP, D1-D3, DS, ES, EV, G, GYM, FA, I400, K1, L1-L2, LRC, MET High School (K200), MC, MS, P1-P3,



PROJECT FEATURES: These Region 3 Capital Renovation Renewal projects represent work in multiple buildings on each campus and will improve the college environment. Each project on the list will be assessed by our architectural and construction management teams, once scope assessments happens, then the scope can be defined and project packages assembled, and put out to bid for construction.