

The Economic Value of Career and Technical Education at San Diego & Imperial Counties Community Colleges



About SDICCC



77,251
Credit CTE students

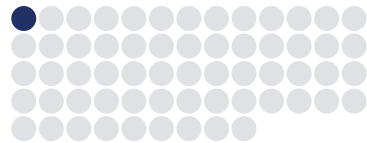


6,892
Non-credit CTE students



4,399
CTE employees

1 out of every 61



jobs in San Diego County is supported by the activities of SDICCC and its students.

ECONOMIC IMPACT ANALYSIS



Alumni impact

Impact of the increased earnings of SDICCC's CTE alumni and the businesses they work for

\$2.2 billion
Added income



An economic boost similar to hosting the Super Bowl
6x

OR

25,242 Jobs supported



Operations spending impact

Impact of annual CTE payroll and other spending

\$416.6 million
Added income



Enough to buy
12,414 new cars

OR

5,084 Jobs supported



Student spending impact

Impact of the daily spending of SDICCC's CTE students attracted to or retained in the county

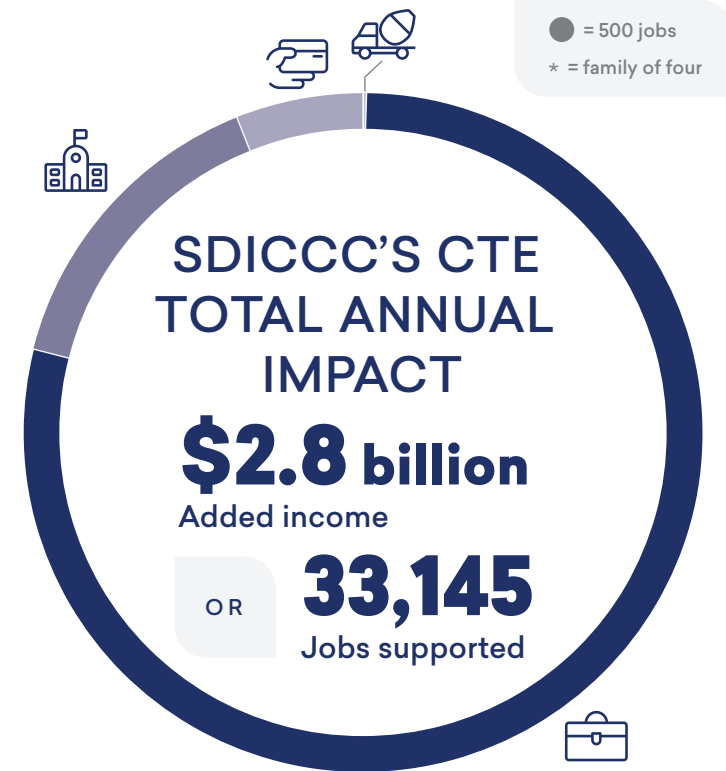
\$179.8 million
Added income



Enough to buy **14,468** families* a year's worth of groceries

OR

2,793 Jobs supported



Construction spending impact

Impact of expenditures for ongoing CTE construction

\$2.4 million
Added income

OR

26 Jobs supported

INVESTMENT ANALYSIS



For every \$1...



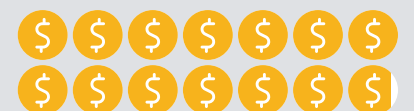
Students gain **\$5.60** in lifetime earnings



Taxpayers gain **\$2.70** in added tax revenue and public sector savings



Society gains **\$13.80** in added income and social savings



The average CTE associate degree graduate from the colleges will see an increase in earnings of **\$12,900** each year compared to someone with a high school diploma working in California.

