

# Joint Partnership Committee Meeting

April 16, 2021



**SAN DIEGO  
COMMUNITY COLLEGE  
DISTRICT**

---

City College • Mesa College • Miramar College  
College of Continuing Education



San Diego  
**Workforce**  
Partnership

# Purpose & Intent

- Strengthen partnership opportunities
  - Provide a structure to support the work

## 2020-2021 Activities

- Identification of need
- Development of recommendations
- Internal discussions and collaborative planning
  
- Jointly approved recommendation to form a Joint Partnership Committee
- Identification of priority areas and activities for exploration



**SAN DIEGO COMMUNITY COLLEGE DISTRICT**

CITY COLLEGE • MESA COLLEGE • MIRAMAR COLLEGE • COLLEGE OF CONTINUING EDUCATION



**sdworkforce**

**#thisisworkforce**

**workforce.org**

# Meeting goals

- Build introductory understanding of organizational activities, structures, and opportunities for partnership
- Review approved activities and identify highest priority to pursue
- Create foundation and structure for regular collaboration in the coming year



**SAN DIEGO COMMUNITY COLLEGE DISTRICT**

CITY COLLEGE • MESA COLLEGE • MIRAMAR COLLEGE • COLLEGE OF CONTINUING EDUCATION



**sdworkforce**

**#thisisworkforce**

**workforce.org**

# Agenda

- Organization and individual introductions
- Overview of priority focus areas
- Roundtable sharing: past and present partnership success
- Activity prioritization
- Discussion of next steps



**SAN DIEGO COMMUNITY COLLEGE DISTRICT**

CITY COLLEGE • MESA COLLEGE • MIRAMAR COLLEGE • COLLEGE OF CONTINUING EDUCATION



**sdworkforce**

**#thisisworkforce**

**workforce.org**



**SAN DIEGO COMMUNITY COLLEGE DISTRICT**

CITY COLLEGE • MESA COLLEGE • MIRAMAR COLLEGE • CONTINUING EDUCATION

## Career Education

*Meeting employer demand and closing middle-skills job gaps*

Connecting students to high-demand, well-paying jobs

SAN DIEGO  
CITY COLLEGE

SAN DIEGO  
MESA COLLEGE

SAN DIEGO  
MIRAMAR  
COLLEGE

SAN DIEGO  
COLLEGE OF  
CONTINUING  
EDUCATION



# SAN DIEGO COMMUNITY COLLEGE DISTRICT

CITY COLLEGE • MESA COLLEGE • MIRAMAR COLLEGE • CONTINUING EDUCATION

## Largest Provider of Workforce in San Diego County

*Meeting employer demand and filling the middle-skills job gaps*

- **\$4.1 Billion to the local economy per year**
  - Enough to support nearly 42K jobs
  - 1 out of every 54 jobs in our region





# SAN DIEGO COMMUNITY COLLEGE DISTRICT

CITY COLLEGE • MESA COLLEGE • MIRAMAR COLLEGE • CONTINUING EDUCATION

## Largest Provider of Workforce in San Diego County

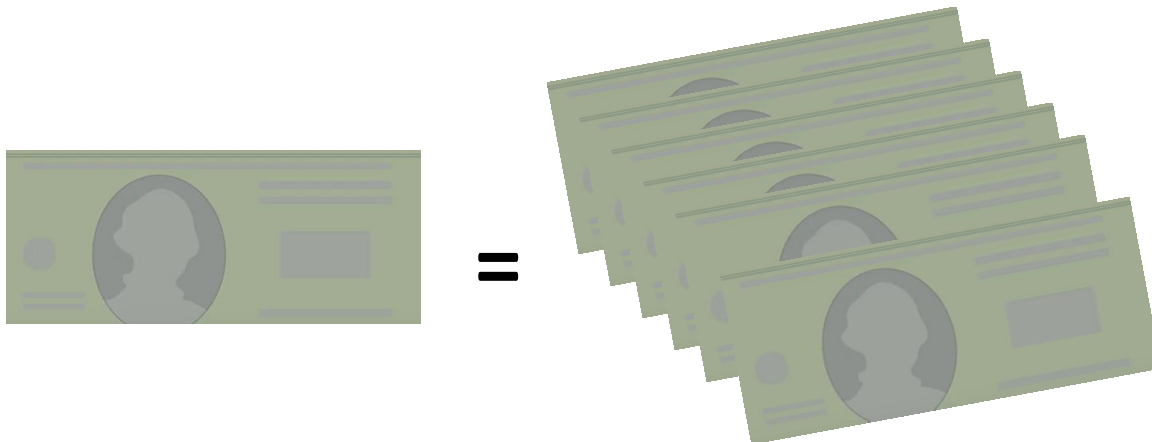
*Meeting employer demand and filling the middle-skills job gaps*

### 98% of graduates remain in the region

- \$3.5 billion in added income to our region (2019-2020)

### Our graduates fill great jobs

- Return of \$6.20 in higher future earnings for every \$1 they invest





# SAN DIEGO COMMUNITY COLLEGE DISTRICT

CITY COLLEGE • MESA COLLEGE • MIRAMAR COLLEGE • COLLEGE OF CONTINUING EDUCATION

## Career Education Programs

*Connecting students to high-demand, well-paying jobs*

- Industry Aligned
- Employer Informed
- Academic & Technical Skills
- Hands-on Experience
- Work-Based Learning
- 21<sup>st</sup> Century Employability Skills
- Credit for Prior Learning

### **Over 60 career education program areas**

- Over 300 degrees and certificates
  - Non-credit certificates & Credit Certificates
  - Associate Degrees
  - Bachelor Degree
  - Apprenticeship Programs
- Online, on campus, and in the community
- Stackable certificates

SAN DIEGO  
CITY COLLEGE

SAN DIEGO  
MESA COLLEGE

SAN DIEGO  
MIRAMAR  
COLLEGE

SAN DIEGO  
COLLEGE OF  
CONTINUING  
EDUCATION



# SAN DIEGO CITY COLLEGE

# SAN DIEGO MESA COLLEGE

# SAN DIEGO MIRAMAR COLLEGE

# SAN DIEGO COLLEGE OF CONTINUING EDUCATION

Accounting  
Administration of Justice  
Agriculture  
Air Condit., Refrigeration, & Enviro. Control Technology  
Alcohol & Other Drug Studies  
American Sign Language Interpreting  
Architecture  
Automotive and Auto Body  
Aviation Maintenance & Operations  
Behavioral Health Aid  
Biotechnology  
Building Construction Technology & Management  
Business, Finance, and Office Skills  
Child Development  
Commercial Music  
Computer & Information Science  
Cosmetology  
Culinary Arts and Management  
CNA  
Cybersecurity

Dance  
Dental  
Diesel Tech.  
Digital Media  
Electronics  
Electricity  
Exercise & Nutritional Sciences  
Fashion & Textiles  
Fire Protection Technology  
Graphic Design  
Health Information Technology  
Health Information Management  
Health Unit Coordinator  
Heating, Ventilation, & Air Conditioning  
Home Health Aid  
Machine Technology  
Manufacturing Engineering Technology  
Medical Assisting  
Medical Lab Tech

Medical Terminology  
Neurodiagnostic Tech  
Nursing  
Paralegal  
Personal Care Assistant  
Personal Training  
Phlebotomy  
Photography  
Physical Therapy Assistant  
Plumbing  
Public Administration  
Radio, Television, and Film  
Radiologic Tech  
Real Estate  
Technical Theatre  
Vet Tech  
Web Development  
Welding  
Yoga Teacher

# SAN DIEGO CITY COLLEGE

# SAN DIEGO MESA COLLEGE

# SAN DIEGO MIRAMAR COLLEGE

# SAN DIEGO COLLEGE OF CONTINUING EDUCATION

## COMMUNITY COLLEGES

SAN DIEGO & IMPERIAL COUNTIES

## CAREER EDUCATION

 <p>ADVANCED MANUFACTURING</p>	 <p>ADVANCED TRANSPORTATION &amp; LOGISTICS</p>
 <p>AGRICULTURE, WATER &amp; ENVIRONMENTAL TECHNOLOGIES</p>	 <p>BUSINESS &amp; ENTREPRENEURSHIP</p>
 <p>ENERGY, CONSTRUCTION &amp; UTILITIES</p>	 <p>HEALTH</p>
 <p>INFORMATION COMMUNICATION TECHNOLOGIES &amp; DIGITAL MEDIA</p>	 <p>LIFE SCIENCES &amp; BIOTECHNOLOGY</p>



## SAN DIEGO COMMUNITY COLLEGE DISTRICT

CITY COLLEGE • MESA COLLEGE • MIRAMAR COLLEGE • COLLEGE OF CONTINUING EDUCATION

### SDCCD CAREER EDUCATION PROGRAMS

- + ADVANCED MANUFACTURING
- + ADVANCED TRANSPORTATION & LOGISTICS
- + AGRICULTURE, WATER, & ENVIRONMENTAL TECHNOLOGIES
- + BUSINESS & ENTREPRENEURSHIP
- + EDUCATION & HUMAN DEVELOPMENT
- + ENERGY, CONSTRUCTION, & UTILITIES
- + GLOBAL TRADE
- + HEALTH
- + INFORMATION COMMUNICATION TECHNOLOGIES & DIGITAL MEDIA
- + LIFE SCIENCES & BIOTECHNOLOGY
- + PUBLIC SAFETY
- + RETAIL, HOSPITALITY, & TOURISM



# SAN DIEGO COMMUNITY COLLEGE DISTRICT

CITY COLLEGE • MESA COLLEGE • MIRAMAR COLLEGE • COLLEGE OF CONTINUING EDUCATION

SAN DIEGO  
CITY COLLEGE

SAN DIEGO  
MESA COLLEGE

SAN DIEGO  
MIRAMAR  
COLLEGE

SAN DIEGO  
COLLEGE OF  
CONTINUING  
EDUCATION

**Career Education Degrees, Certificates, and Transfer programs**

Apprenticeship Programs

Baccalaureate Program

Apprenticeship Programs

**Noncredit  
Career Education Certificates**

Adult Ed. / High School Diploma |  
Contract Education | Pre-apprenticeship  
Programs | WIOA

**Career Services | Work Experience Coordinators | Job Placement Coordinators | Outreach**

# How We Work

**\$ We bring money to the region**  
from federal, state and local governments; private business and philanthropy.

**We bring together the community**  
through boards & committees that determine policy, strategy and priorities.



**JOB SEEKERS**  
(especially underserved)

**We convene** community partners to create impactful workforce development programs based on research.



**We identify local skills gaps** to pinpoint the skills employers are looking for.

**EMPLOYERS**

**We design, fund, deliver and measure the programs** to increase opportunities for job seekers and solutions for businesses.



# Workforce Partnership's Priority Sectors



Advanced Manufacturing



Education & Human  
Development



Energy, Construction &  
Utilities



Health Care



Information & Communication  
Technologies (ICT) and Digital  
Media



Life Sciences & Biotechnology



Public Administration



sdworkforce

#thisisworkforce

workforce.org



## Job Quality

**Not all jobs are created equal**

We place individuals in and help businesses foster inclusive, sustainable work for all that provides living wages, supports employee growth and elevates businesses



## 2Gen Solutions

**Multiple generations, transformational results**

We design, support and run programs that address the needs of workers and their families



## Outcomes-Focused Funding

**Where money meets mission**

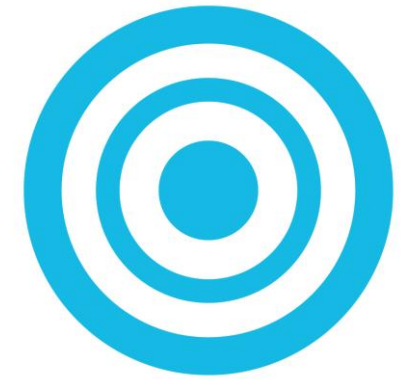
We build and promote self-sustaining funding mechanisms that reward impact and fill access gaps



## Inclusive Business Growth

**A societal and economic imperative**

We develop a skilled, inclusive, competitive workforce to promote economic growth for businesses and opportunity for all



## Population-Specific Interventions

**Human-centered services; population-level impact**

We help drive change at the population level through the delivery of targeted services and by spreading evidence-based practices among collaborators

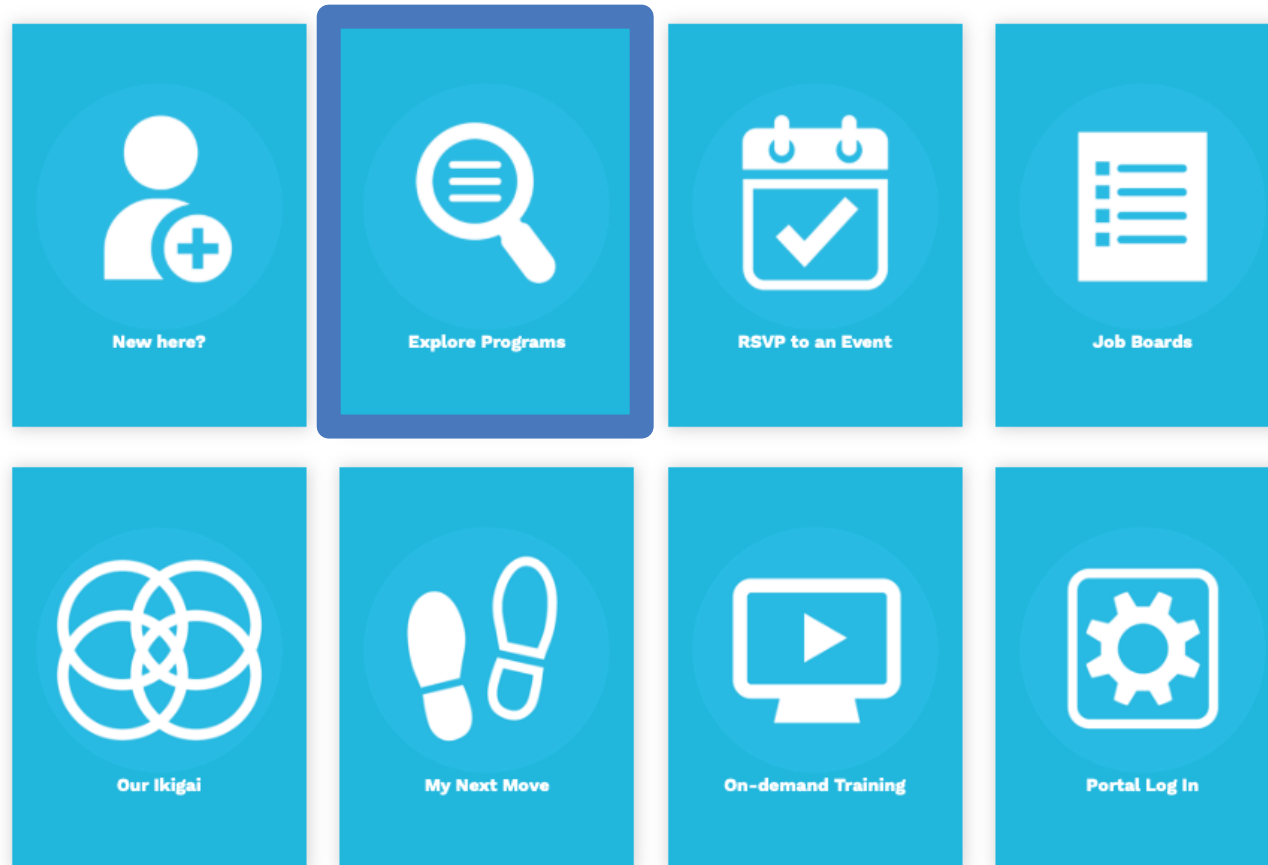


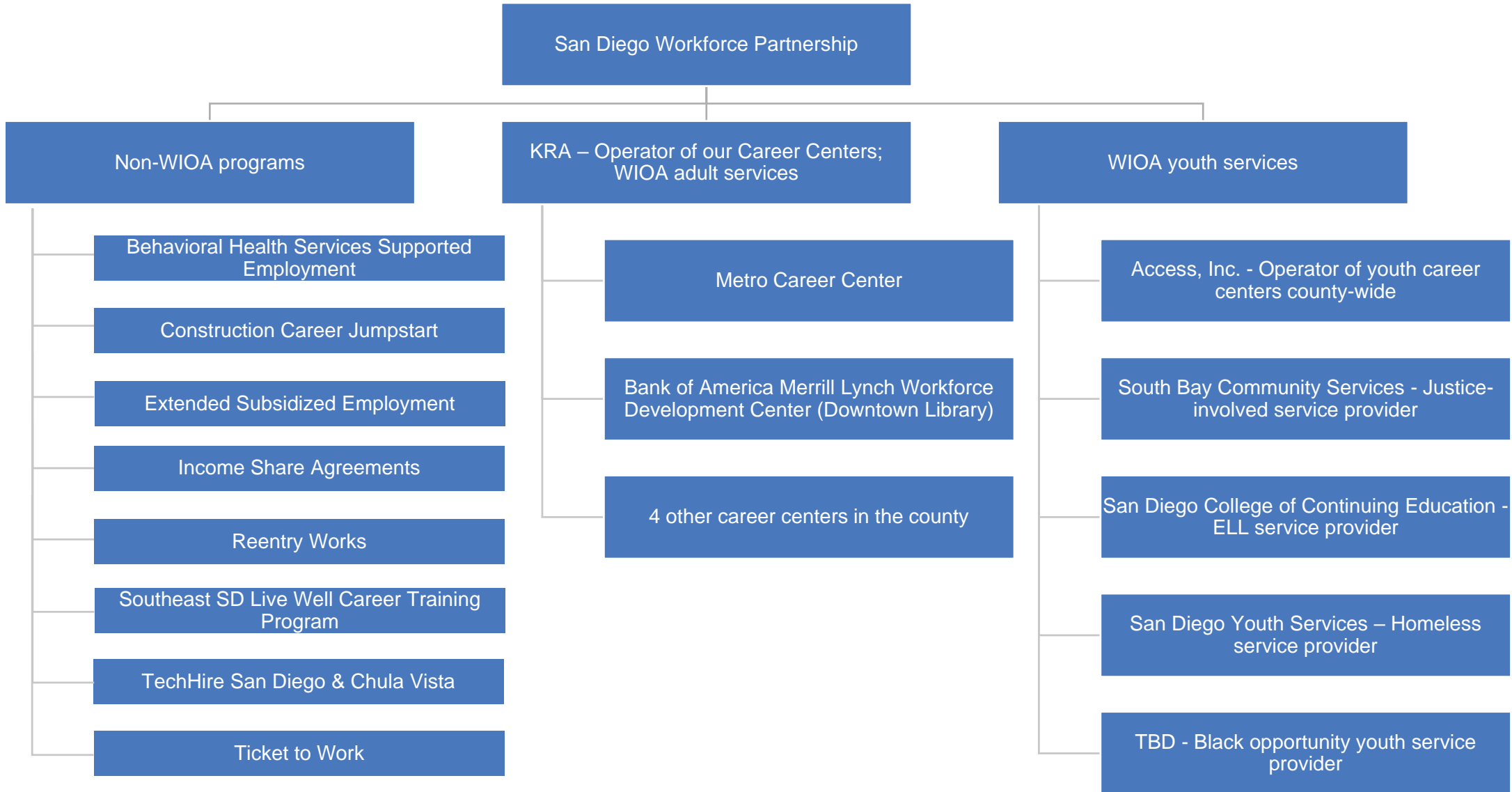
## It's time to jumpstart your job search, San Diego!

We're here to empower you in your job search.

It's more than just finding your next job; it's connecting what you know, love and need with market demands to help you achieve your goals.

Browse our free resources to discover how we can support you on your career journey.







# Joint Partnership Priority Areas



**SAN DIEGO COMMUNITY COLLEGE DISTRICT**

CITY COLLEGE • MESA COLLEGE • MIRAMAR COLLEGE • COLLEGE OF CONTINUING EDUCATION



**sdworkforce**

**#thisisworkforce**

**workforce.org**

# Joint priority focus areas

1. Referrals & recruitment
2. Program & process awareness
3. Job placement & employability



**SAN DIEGO COMMUNITY COLLEGE DISTRICT**

CITY COLLEGE • MESA COLLEGE • MIRAMAR COLLEGE • COLLEGE OF CONTINUING EDUCATION



**sdworkforce**

**#thisisworkforce**

**workforce.org**

# Roundtable sharing: Past and present partnership successes



**SAN DIEGO COMMUNITY COLLEGE DISTRICT**

CITY COLLEGE • MESA COLLEGE • MIRAMAR COLLEGE • COLLEGE OF CONTINUING EDUCATION



**sdworkforce**

**#thisisworkforce**

**workforce.org**

# Review of jointly approved activities



**SAN DIEGO COMMUNITY COLLEGE DISTRICT**

CITY COLLEGE • MESA COLLEGE • MIRAMAR COLLEGE • COLLEGE OF CONTINUING EDUCATION



**sdworkforce**

**#thisisworkforce**

**workforce.org**

# Activity 1: Increase awareness of SDCCD career ed. programs within SDWP

- Enhance integration of SDCCD career education programs into SDWP's My Next Move and Career Coach websites.
  - Review links within My Next Move website, which integrates community college training opportunities at the priority sector level under "Get Training" within each sector page. Provide and improve link access to relevant programs where appropriate.
  - Integrate SDCE's noncredit programs into SDWP's Career Coach website which currently only integrates IPEDS data on college degree programs.



**SAN DIEGO COMMUNITY COLLEGE DISTRICT**

CITY COLLEGE • MESA COLLEGE • MIRAMAR COLLEGE • COLLEGE OF CONTINUING EDUCATION



**sdworkforce**

**#thisisworkforce**

**workforce.org**

# Activity 2: Increase awareness of SDWP career exploration tools within SDCCD

- SDWP to provide training on career exploration resources and how to utilizing them to support student success.
  - Training could be done at institution or districtwide level(s).
  - Institutions to confirm participants and preferred timing.

EXPLORE PRIORITY SECTORS

EXPLORE PRIORITY JOBS

Welcome to Career Coach

It's time to jumpstart your job search, San Diego!



**SAN DIEGO COMMUNITY COLLEGE DISTRICT**

CITY COLLEGE • MESA COLLEGE • MIRAMAR COLLEGE • COLLEGE OF CONTINUING EDUCATION



[sdworkforce](#)

[#thisisworkforce](#)

[workforce.org](#)

# Activity 3: Establish lead points of contact

- Explore the establishment of Lead Points of Contact between SDCCCD's four institutions and the Career Coaches at SDWP Career Centers
  - Specifically within the Bank of America Center at the Downtown Library and Metro Center
- Focus on relationship building between SDCCCD roles and SDWP Career Coaches.



**SAN DIEGO COMMUNITY COLLEGE DISTRICT**

CITY COLLEGE • MESA COLLEGE • MIRAMAR COLLEGE • COLLEGE OF CONTINUING EDUCATION



**sdworkforce**

**#thisisworkforce**

**workforce.org**

# Activity 4: Explore physical resource sharing

- Evaluate and increase availability of SDCCD resources at SDWP career centers.
  - Resources may include physical booklets or information (when in-person services restart), workshops, or on-site representatives.
- Explore co-location opportunities, either for SDCCD to have permanent space within career centers or for SDWP career center locations to exist on SDCCD campuses.
- An evaluation of the current resources will uncover the opportunities.



**SAN DIEGO COMMUNITY COLLEGE DISTRICT**

CITY COLLEGE • MESA COLLEGE • MIRAMAR COLLEGE • COLLEGE OF CONTINUING EDUCATION



[sdworkforce](#)

[#thisisworkforce](#)

[workforce.org](#)



# Activity 5: Expand awareness/participation in SDWP funding opportunities

- Increase awareness of SDWP funding opportunities, programs, and initiatives; explore participation where appropriate.
- Possible areas to explore include: Income Share Agreements (ISAs), Eligible Training Provider List (ETPL), etc.



**SAN DIEGO COMMUNITY COLLEGE DISTRICT**

CITY COLLEGE • MESA COLLEGE • MIRAMAR COLLEGE • COLLEGE OF CONTINUING EDUCATION



**sdworkforce**

**#thisisworkforce**

**workforce.org**

**Activity 1:** Increase awareness of SDCCD career education programs within SDWP

**Activity 2:** Increase awareness of SDWP career exploration tools within SDCCD

**Activity 3:** Establish lead points of contact

**Activity 4:** Explore physical resource sharing

**Activity 5:** Expand awareness/participation in SDWP funding opportunities



**SAN DIEGO COMMUNITY COLLEGE DISTRICT**

CITY COLLEGE • MESA COLLEGE • MIRAMAR COLLEGE • COLLEGE OF CONTINUING EDUCATION



**sdworkforce**

**#thisisworkforce**

**workforce.org**

**Rank priorities**

**menti.com**  
**code: 6439 7015**



**SAN DIEGO COMMUNITY COLLEGE DISTRICT**

CITY COLLEGE • MESA COLLEGE • MIRAMAR COLLEGE • COLLEGE OF CONTINUING EDUCATION



**sdworkforce**

**#thisisworkforce**

**workforce.org**

# Menti Activity Results



How would you prioritize these activities over the next year?



**SAN DIEGO COMMUNITY COLLEGE DISTRICT**

CITY COLLEGE • MESA COLLEGE • MIRAMAR COLLEGE • COLLEGE OF CONTINUING EDUCATION



[sdworkforce](#)

[#thisisworkforce](#)

[workforce.org](#)

# Priority projects and future agenda planning



**SAN DIEGO COMMUNITY COLLEGE DISTRICT**

CITY COLLEGE • MESA COLLEGE • MIRAMAR COLLEGE • COLLEGE OF CONTINUING EDUCATION



**sdworkforce**

**#thisisworkforce**

**workforce.org**

# Partnership updates



**SAN DIEGO COMMUNITY COLLEGE DISTRICT**

CITY COLLEGE • MESA COLLEGE • MIRAMAR COLLEGE • COLLEGE OF CONTINUING EDUCATION



**sdworkforce**

**#thisisworkforce**

**workforce.org**

# STRONG WORKFORCE FACULTY INSTITUTE:



RETHINKING LABOR MARKET INFORMATION (LMI)  
FOR THE STUDENT EXPERIENCE



## LMI TRAINING FOR INSTRUCTORS & COUNSELORS

This professional learning will include...

### A SERIES OF WEBINAR-STYLE WORKSHOPS (2:00 PM - 3:30 PM):

Monday, May 3	Introduction to Labor Market Information
Tuesday, May 4	Overview of LMI Tools and Resources
Wednesday, May 5	Application of LMI Tools and Resources

San Diego City College - [rlamurag@sdccd.edu](mailto:rlamurag@sdccd.edu)  
San Diego College of Continuing Education - [cstorey@sdccd.edu](mailto:cstorey@sdccd.edu)  
San Diego Mesa College - [mdromero@sdccd.edu](mailto:mdromero@sdccd.edu)  
San Diego Miramar College - [jlopez006@sdccd.edu](mailto:jlopez006@sdccd.edu)

### GUIDED REFLECTION SESSIONS (2:00 PM - 3:30 PM):

Thursday, May 6	Reviewing LMI
Thursday, May 27	Applying LMI to Your Day-to-Day Work
Thursday, June 17	Using LMI to Connect with Students and Employers

# Joint Partnership Committee

Thank you!



**SAN DIEGO  
COMMUNITY COLLEGE  
DISTRICT**

---

City College • Mesa College • Miramar College  
College of Continuing Education



San Diego  
**Workforce**  
Partnership