

2010

Mesa

# Fact Book

## Mesa College



*Prepared by:*  
Office of Institutional Research and Planning  
September 2010

# Mesa College Fact Book 2010: Table of Contents

Overview .....	1	By Gender.....	35
<b>Section I. Headcount and Student Characteristics</b> .....	2	By Ethnicity.....	36
Section Overview .....	3	By Age.....	37
Overall .....	4	Annual GPA	
Gender .....	5	Overall .....	38
Ethnicity .....	6	By Gender.....	39
Age .....	7	By Ethnicity.....	40
Enrollment Status.....	8	By Age.....	41
Educational Objective.....	9	Annual Awards Conferred	
Primary Language.....	11	Overall .....	42
Prior Education Level.....	12	By Gender.....	43
Service Area of Residence.....	13	By Ethnicity.....	46
Units Attempted by Units Earned .....	14	By Age.....	50
First Generation.....	16	Annual Transfer	
Income Level.....	17	Overall .....	53
DSPS.....	18	By Gender.....	54
EOPS .....	19	By Ethnicity.....	55
<b>Section II. Fall to Spring Term Persistence Rates</b> .....	20	By Age.....	56
Section Overview .....	21	CSU-UC/Private/Out-of-State .....	57
Overall .....	22	CSU/UC .....	58
By Gender.....	23	Institution Type (Private vs. Public).....	59
By Ethnicity.....	24	<b>Section IV. Productivity and Efficiency</b> .....	60
By Age.....	26	Section Overview .....	61
<b>Section III. Student Outcomes</b> .....	28	Annual FTES.....	62
Section Overview .....	29	Enrollments: Online and On Campus.....	63
Annual Success Rates		Fill Rates .....	64
Overall .....	30	Load .....	66
By Gender.....	31	<b>Section V. Human Resources</b> .....	67
By Ethnicity.....	32	Section Overview .....	68
By Age.....	33	Fall 2009 Employees by Gender and Ethnicity .....	69
Annual Retention Rates		<b>Section VI. Concluding Remarks</b> .....	71
Overall .....	34		

## **Mesa College Fact Book 2010: Overview**

---

This Fact Book is a publication of the Office of Institutional Research and Planning for the San Diego Community College District. It is designed to serve the information needs of the college community with a primary focus on student enrollment, demographics, and outcomes.

The Fact Book is a rich source of collegewide trend information that may be used for planning and decision making. The book contains the following five sections:

- 1) **Headcount and Student Characteristics.** Provides information on student demographic characteristics (e.g., age, ethnicity, and educational objective) over five years.
- 2) **Term Persistence Rates.** Provides information about first-time to college students who complete a fall term and enroll in the subsequent spring term. The information is also reported by demographic characteristics of interest.
- 3) **Student Outcomes.** Provides information on students' successful course completion rates, retention rates, GPA, awards conferred, and transfer volume. All of the information is provided in summary form, as well as by demographic characteristics of interest.
- 4) **Productivity and Efficiency.** Provides information on annual FTES, enrollment and fill rates, and Load (WSCH/FTEF).
- 5) **Human Resources.** Provides information on the number of employees by ethnicity, gender, and employee classification.

Each section contains the following benchmarks: 1) The percentage change over the five year period being reported, 2) The collegewide average and 3) The "All Colleges" in the district averages (excludes Continuing Education).

**Section I**  
**Headcount & Student Characteristics**

## **Mesa College Section I: Headcount and Student Characteristics**

---

This section of the Fact Book contains student headcount by various student characteristics. The headcount figures are single student counts (unduplicated headcount) based on official census counts at the end of the semester (all students who dropped or never attended prior to the class census date were not included). The headcount information is reported over a period of five years to analyze trends and establish benchmarks.

Headcount information is reported by the following segments:

- 1) Overall
- 2) Gender
- 3) Ethnicity
- 4) Age
- 5) Educational Objective
- 6) Enrollment Status
- 7) Primary Language
- 8) Prior Education Level
- 9) Service Area of Residence
- 10) Units Attempted by Units Earned
- 11) First Generation
- 12) Income Level
- 13) DSPS
- 14) EOPS

## Mesa College Section I: Headcount and Student Characteristics

**Overall Headcount:** Unduplicated student headcount for Mesa College showed a 12% increase between Fall 2005 and Fall 2009. Likewise, the unduplicated headcount between Spring 2006 and Spring 2010 also increased by 12%. Summer 2005 to Summer 2009 showed a 3% increase. Despite the initial decline from Summer 2005 to Summer 2006, unduplicated headcount increased steadily for all terms during the five-year period being reported.

Figure 1.1. Mesa College Overall Headcount (Fall)

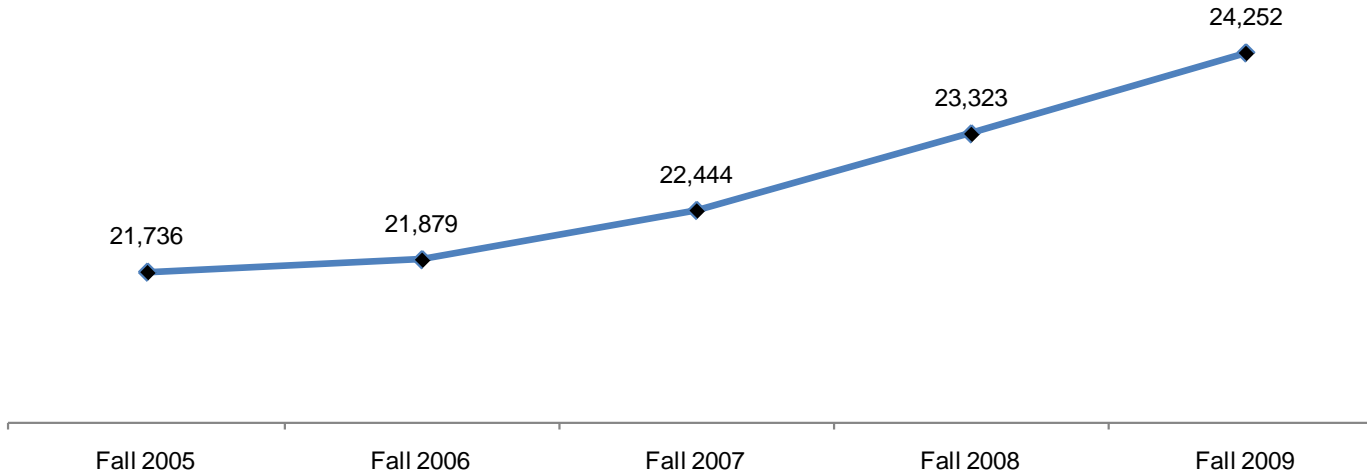


Table 1.1.1. Mesa College Overall Headcount (Summer)

	Summer 2005	Summer 2006	Summer 2007	Summer 2008	Summer 2009	% Change Summer 05-09
<b>Total</b>	11,135	10,478	10,875	12,003	11,505	3%

Source: SDCCD Information System

Table 1.1.2. Mesa College Overall Headcount (Fall)

	Fall 2005	Fall 2006	Fall 2007	Fall 2008	Fall 2009	% Change Fall 05-09
<b>Total</b>	21,736	21,879	22,444	23,323	24,252	12%

Source: SDCCD Information System

Table 1.1.3. Mesa College Overall Headcount (Spring)

	Spring 2006	Spring 2007	Spring 2008	Spring 2009	Spring 2010	% Change Spring 06-10
<b>Total</b>	22,055	22,145	22,756	23,967	24,752	12%

Source: SDCCD Information System

## Mesa College Section I: Headcount and Student Characteristics

**Headcount by Gender:** On average, the female student headcount (53%) was higher than their male student counterpart (46%), which has remained fairly consistent between Fall 2005 and Fall 2009. Both male and female student headcounts increased steadily between Fall 2005 and Fall 2009, which paralleled the overall student population trend.

Figure 1.2. Mesa College Headcount by Gender



Table 1.2. Mesa College Headcount by Gender

	Fall 2005		Fall 2006		Fall 2007		Fall 2008		Fall 2009		% Change Fall 05-09	College Average Fall 05-09	All Colleges Average Fall 05-09
Female	11,676	54%	11,709	54%	12,046	54%	12,449	53%	12,826	53%	10%	53%	51%
Male	9,997	46%	10,124	46%	10,376	46%	10,864	47%	11,424	47%	14%	46%	48%
Unreported	63	0%	46	0%	22	0%	10	0%	2	0%	-97%	0%	0%
<b>Total</b>	<b>21,736</b>	<b>100%</b>	<b>21,879</b>	<b>100%</b>	<b>22,444</b>	<b>100%</b>	<b>23,323</b>	<b>100%</b>	<b>24,252</b>	<b>100%</b>	<b>12%</b>	<b>100%</b>	<b>100%</b>

Source: SDCCD Information System

# Mesa College Section I: Headcount and Student Characteristics

**Headcount by Ethnicity:** The ethnic groups that constituted the largest headcounts between Fall 2005 and Fall 2009 were White students (40%), Latino students (19%), and Asian/Pacific Islander students (16%) on average. Both the Latino student population and those students categorized as ‘Other’ ethnicities increased in headcount (36% & 39%, respectively). In contrast, the Filipino student headcount declined 4% between Fall 2005 and Fall 2009. The Latino student headcount at Mesa College (19%) was underrepresented compared to the Latino student headcount (23%) of all colleges in the district, while the Asian/Pacific Islander student headcount was overrepresented (16%) compared to the Asian/Pacific Islander student headcount (12%) of all colleges in the district.

Figure 1.3. Mesa College Headcount by Ethnicity

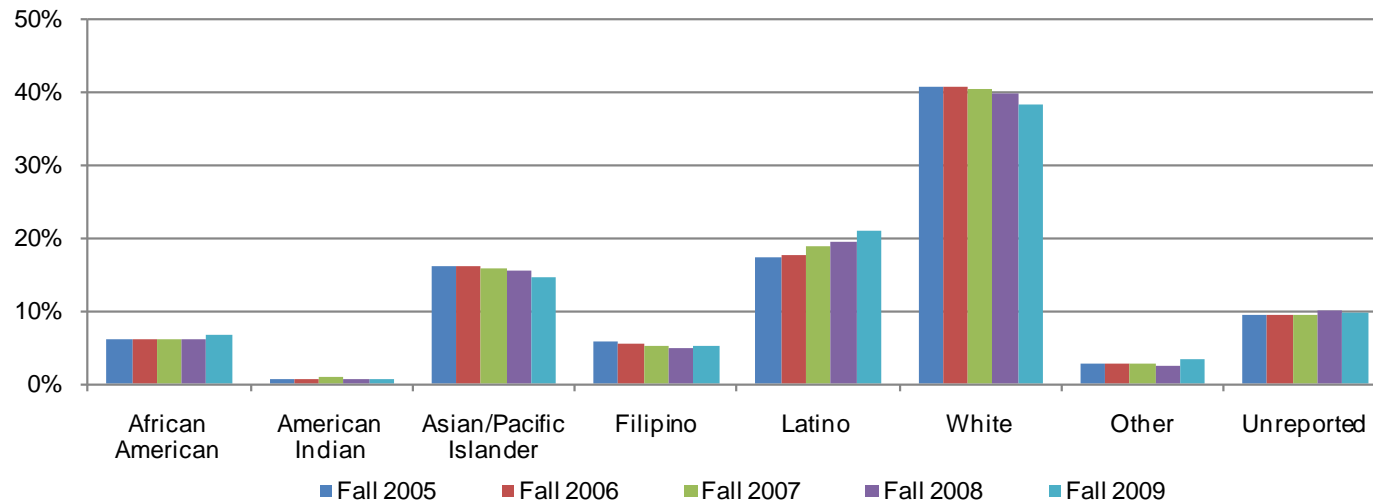


Table 1.3. Mesa College Headcount by Ethnicity

	Fall 2005		Fall 2006		Fall 2007		Fall 2008		Fall 2009		% Change Fall 05-09	College Average Fall 05-09	All Colleges Average Fall 05-09
African American	1,370	6%	1,387	6%	1,362	6%	1,436	6%	1,640	7%	20%	6%	8%
American Indian	192	1%	181	1%	204	1%	208	1%	195	1%	2%	1%	1%
Asian/Pacific Islander	3,526	16%	3,560	16%	3,583	16%	3,623	16%	3,558	15%	1%	16%	12%
Filipino	1,312	6%	1,231	6%	1,191	5%	1,183	5%	1,258	5%	-4%	5%	6%
Latino	3,758	17%	3,907	18%	4,244	19%	4,575	20%	5,102	21%	36%	19%	23%
White	8,884	41%	8,913	41%	9,054	40%	9,318	40%	9,271	38%	4%	40%	37%
Other	625	3%	619	3%	653	3%	627	3%	870	4%	39%	3%	3%
Unreported	2,069	10%	2,081	10%	2,153	10%	2,353	10%	2,358	10%	14%	10%	9%
<b>Total</b>	<b>21,736</b>	<b>100%</b>	<b>21,879</b>	<b>100%</b>	<b>22,444</b>	<b>100%</b>	<b>23,323</b>	<b>100%</b>	<b>24,252</b>	<b>100%</b>	<b>12%</b>	<b>100%</b>	<b>100%</b>

Source: SDCCD Information System



## Mesa College Section I: Headcount and Student Characteristics

**Headcount by Age:** Students who were between ages 18-24, on average, constituted more than half of the Mesa student population (58%). Of the total Mesa student population, the number of students under age 18 showed the greatest increase in headcount (60%), from 785 in Fall 2005 to 1,254 in Fall 2009. All age groups exhibited an overall upward trend in student headcount between Fall 2005 and Fall 2009. Students ages 18 to 24 years were overrepresented at Mesa College (58%) compared to the same age for all colleges in the district (53%).

Figure 1.4. Mesa College Headcount by Age

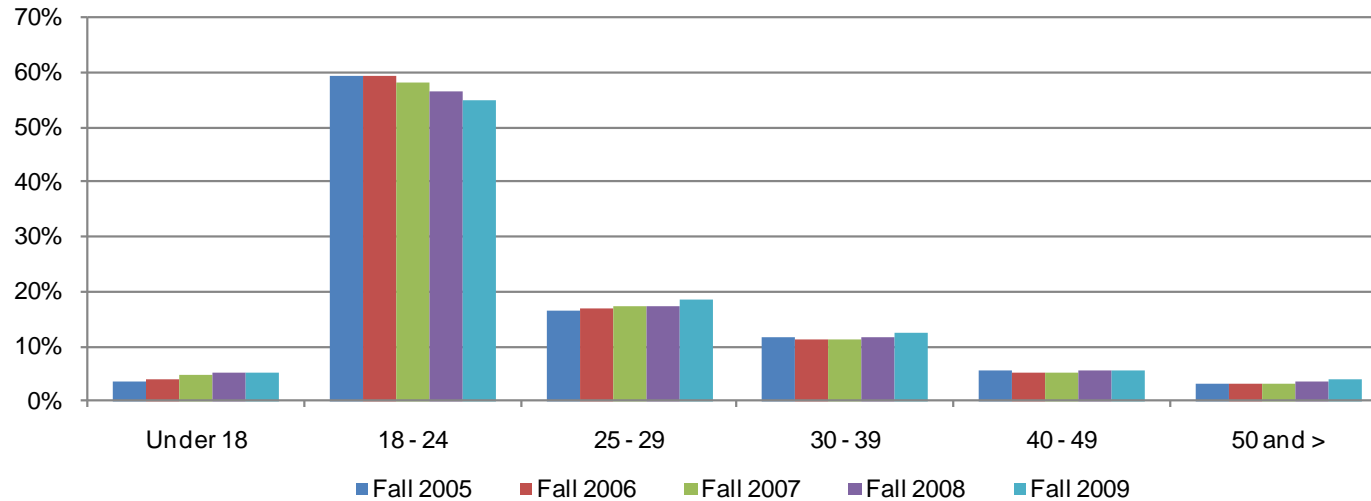


Table 1.4. Mesa College Headcount by Age

	Fall 2005		Fall 2006		Fall 2007		Fall 2008		Fall 2009		% Change Fall 05-09	College Average Fall 05-09	All Colleges Average Fall 05-09
Under 18	785	4%	861	4%	1,078	5%	1,205	5%	1,254	5%	60%	5%	3%
18 - 24	12,912	59%	12,973	59%	13,088	58%	13,189	57%	13,325	55%	3%	58%	53%
25 - 29	3,595	17%	3,655	17%	3,841	17%	4,034	17%	4,477	18%	25%	17%	17%
30 - 39	2,490	11%	2,495	11%	2,538	11%	2,749	12%	2,983	12%	20%	12%	14%
40 - 49	1,241	6%	1,163	5%	1,179	5%	1,269	5%	1,304	5%	5%	5%	8%
50 and >	660	3%	690	3%	699	3%	869	4%	908	4%	38%	3%	5%
Unreported	53	0%	42	0%	21	0%	8	0%	1	0%	-98%	0%	0%
<b>Total</b>	<b>21,736</b>	<b>100%</b>	<b>21,879</b>	<b>100%</b>	<b>22,444</b>	<b>100%</b>	<b>23,323</b>	<b>100%</b>	<b>24,252</b>	<b>100%</b>	<b>12%</b>	<b>100%</b>	<b>100%</b>

Source: SDCCD Information System

## Mesa College Section I: Headcount and Student Characteristics

**Headcount by Enrollment Status:** On average, 64% of the student population comprised continuing students. The number of current high school students who were enrolled at Mesa College increased 43%, from 1,051 students in Fall 2005 to 1,499 in Fall 2009. In contrast, the number of first time transfer students decreased 10% between Fall 2005 and Fall 2009.

Figure 1.5. Mesa College Headcount by Enrollment Status

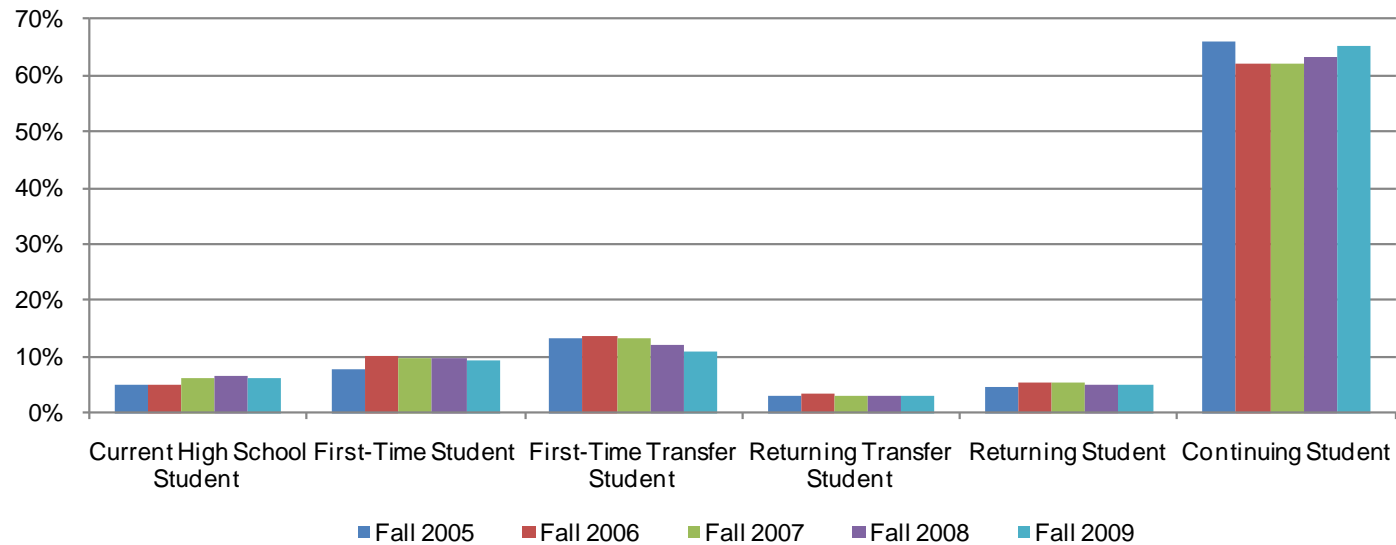


Table 1.5. Mesa College Headcount by Enrollment Status

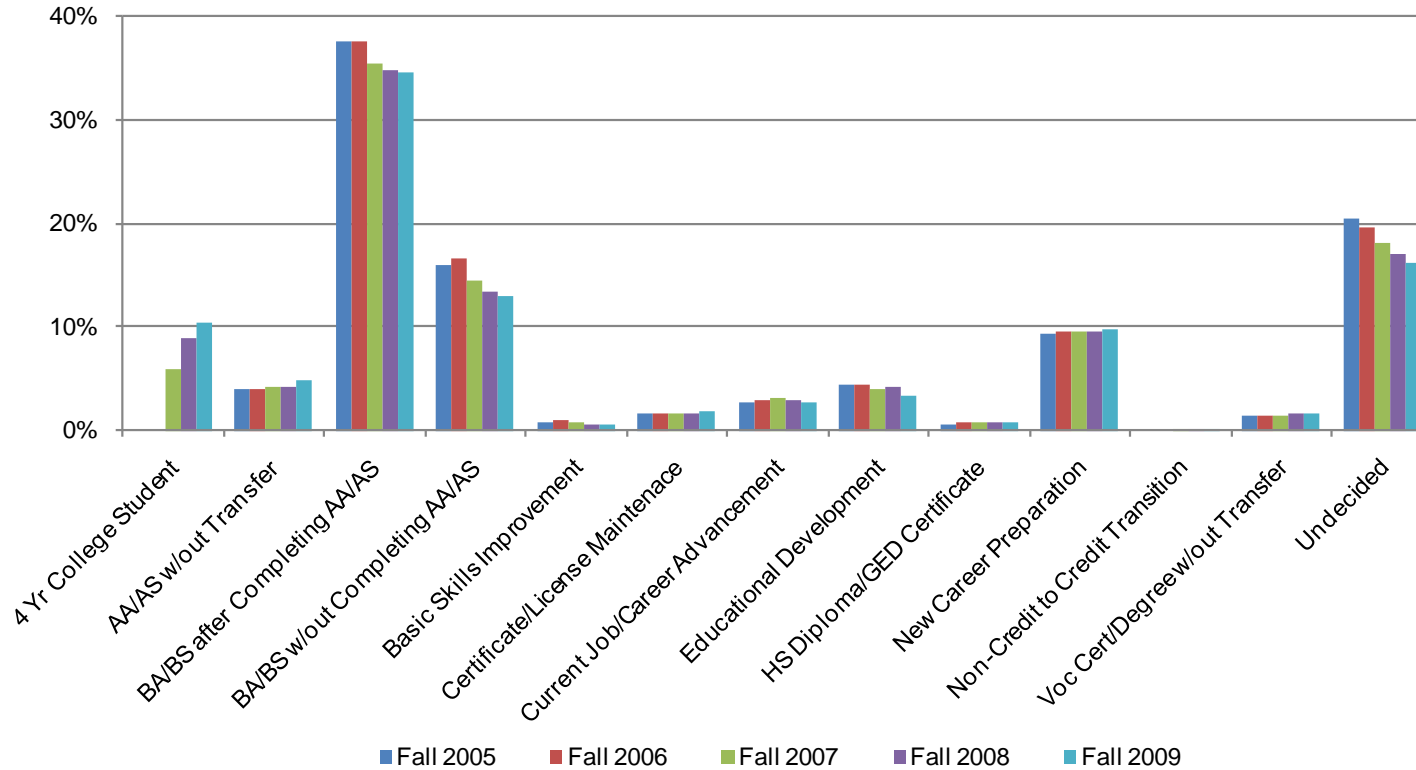
	Fall 2005		Fall 2006		Fall 2007		Fall 2008		Fall 2009		% Change Fall 05-09	College Average Fall 05-09	All Colleges Average Fall 05-09
Current High School Student	1,051	5%	1,126	5%	1,389	6%	1,523	7%	1,499	6%	43%	6%	4%
First-Time Student	1,667	8%	2,237	10%	2,206	10%	2,260	10%	2,303	9%	38%	9%	11%
First-Time Transfer Student	2,917	13%	2,982	14%	2,985	13%	2,822	12%	2,613	11%	-10%	13%	13%
Returning Transfer Student	675	3%	713	3%	726	3%	698	3%	789	3%	17%	3%	6%
Returning Student	979	5%	1,146	5%	1,188	5%	1,193	5%	1,178	5%	20%	5%	5%
Continuing Student	14,341	66%	13,579	62%	13,893	62%	14,770	63%	15,842	65%	10%	64%	61%
Unreported	106	0%	96	0%	57	0%	57	0%	28	0%	-74%	0%	1%
<b>Total</b>	<b>21,736</b>	<b>100%</b>	<b>21,879</b>	<b>100%</b>	<b>22,444</b>	<b>100%</b>	<b>23,323</b>	<b>100%</b>	<b>24,252</b>	<b>100%</b>	<b>12%</b>	<b>100%</b>	<b>100%</b>

Source: SDCCD Information System

# Mesa College Section I: Headcount and Student Characteristics

**Headcount by Educational Objective:** Approximately half of the Mesa student population (51%) selected transfer to obtain a BA/BS with or without an AA/AS degree as their educational objective during the five terms being reported. Between Fall 2005 and Fall 2009, the educational objectives that made the most gains in popularity were high school diploma/GED (increased by 36%), vocational certificate/degree with no transfer (increased by 36%), and associate degree without transfer (increased by 35%). In contrast, both Basic Skills Improvement and educational development as educational objectives decreased 15% and 14%, respectively.

Figure 1.6. Mesa College Headcount by Educational Objective



# Mesa College Section I: Headcount and Student Characteristics

Table 1.6. Mesa College Headcount by Educational Objective

	Fall 2005		Fall 2006		Fall 2007		Fall 2008		Fall 2009		% Change Fall 05-09	College Average Fall 05-09	All Colleges Average Fall 05-09
4 Yr College Student	0	0%	0	0%	1,317	6%	2,056	9%	2,532	10%	---	5%	5%
AA/AS w/out Transfer	852	4%	879	4%	934	4%	989	4%	1,153	5%	35%	4%	5%
BA/BS after Completing AA/AS	8,155	38%	8,236	38%	7,961	35%	8,090	35%	8,386	35%	3%	36%	34%
BA/BS w/out Completing AA/AS	3,490	16%	3,620	17%	3,265	15%	3,099	13%	3,128	13%	-10%	15%	12%
Basic Skills Improvement	189	1%	194	1%	162	1%	150	1%	161	1%	-15%	1%	1%
Certificate/License Maintenance	365	2%	339	2%	356	2%	394	2%	445	2%	22%	2%	2%
Current Job/Career Advancement	601	3%	634	3%	707	3%	670	3%	658	3%	9%	3%	5%
Educational Development	941	4%	964	4%	911	4%	961	4%	812	3%	-14%	4%	4%
HS Diploma/GED Certificate	143	1%	159	1%	162	1%	204	1%	194	1%	36%	1%	1%
New Career Preparation	2,046	9%	2,095	10%	2,161	10%	2,240	10%	2,345	10%	15%	10%	11%
Non-Credit to Credit Transition	0	0%	0	0%	12	0%	27	0%	23	0%	---	0%	0%
Voc Cert/Degree w/out Transfer	303	1%	308	1%	321	1%	383	2%	412	2%	36%	2%	2%
Undecided	4,462	21%	4,295	20%	4,063	18%	3,973	17%	3,915	16%	-12%	18%	18%
Unreported	189	1%	156	1%	112	0%	87	0%	88	0%	-53%	1%	1%
<b>Total</b>	<b>21,736</b>	<b>100%</b>	<b>21,879</b>	<b>100%</b>	<b>22,444</b>	<b>100%</b>	<b>23,323</b>	<b>100%</b>	<b>24,252</b>	<b>100%</b>	<b>12%</b>	<b>100%</b>	<b>100%</b>

Source: SDCCD Information System

Note: 4 Yr College Student and Non-Credit to Credit Transition was not an option prior to Fall 2007.

## Mesa College Section I: Headcount and Student Characteristics

**Headcount by Primary Language:** On average, 94% of the Mesa student population spoke English as their primary language, which was consistent with the all colleges in the district average (93%). There was an increase in headcount for those who reported speaking English and those who spoke a language other than English (12% & 11%, respectively) between Fall 2005 and Fall 2009.

Figure 1.7. Mesa College Headcount by Primary Language

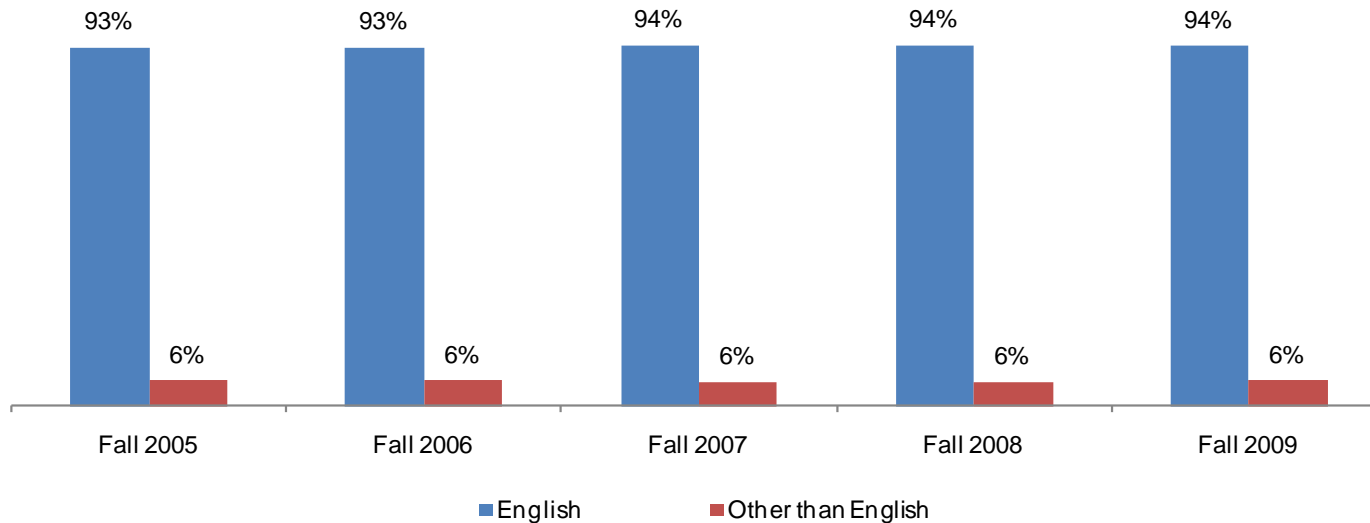


Table 1.7. Mesa College Headcount by Primary Language

	Fall 2005		Fall 2006		Fall 2007		Fall 2008		Fall 2009		% Change Fall 05-09	College Average Fall 05-09	All Colleges Average Fall 05-09
English	20,254	93%	20,414	93%	21,024	94%	21,883	94%	22,688	94%	12%	94%	93%
Other than English	1,406	6%	1,407	6%	1,386	6%	1,424	6%	1,562	6%	11%	6%	6%
Unreported	76	0%	58	0%	34	0%	16	0%	2	0%	-97%	0%	0%
<b>Total</b>	<b>21,736</b>	<b>100%</b>	<b>21,879</b>	<b>100%</b>	<b>22,444</b>	<b>100%</b>	<b>23,323</b>	<b>100%</b>	<b>24,252</b>	<b>100%</b>	<b>12%</b>	<b>100%</b>	<b>100%</b>

Source: SDCCD Information System

# Mesa College Section I: Headcount and Student Characteristics

**Headcount by Prior Education Level:** From Fall 2005 to Fall 2009, a majority of the Mesa College student population reported that they were high school graduates (67%) on average. The number of Mesa students who were not high school graduates nor enrolled in high school increased 37% and the Special Admit/K-12 headcount increased 38% between Fall 2005 and Fall 2009. On average 11% of the Mesa student population had a bachelors degree or higher.

Figure 1.8. Mesa College Headcount by Prior Education Level

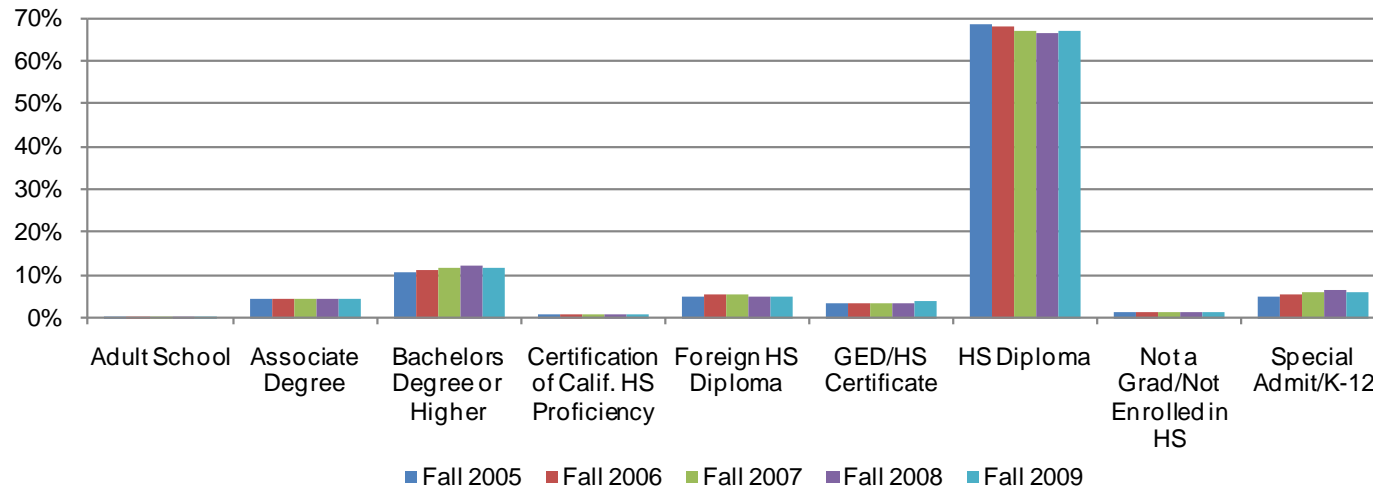


Table 1.8. Mesa College Headcount by Prior Education Level

	Fall 2005		Fall 2006		Fall 2007		Fall 2008		Fall 2009		% Change Fall 05-09	College Average Fall 05-09	All Colleges Average Fall 05-09
Adult School	78	0%	55	0%	43	0%	53	0%	54	0%	-31%	0%	0%
Associate Degree	946	4%	976	4%	1,018	5%	1,012	4%	1,041	4%	10%	4%	5%
Bachelors Degree or Higher	2,338	11%	2,390	11%	2,572	11%	2,791	12%	2,778	11%	19%	11%	12%
Certification of Calif. HS Proficiency	197	1%	197	1%	167	1%	186	1%	205	1%	4%	1%	1%
Foreign HS Diploma	1,096	5%	1,137	5%	1,192	5%	1,167	5%	1,251	5%	14%	5%	5%
GED/HS Certificate	740	3%	730	3%	743	3%	815	3%	889	4%	20%	3%	5%
HS Diploma	14,942	69%	14,925	68%	15,005	67%	15,457	66%	16,182	67%	8%	67%	67%
Not a Grad/Not Enrolled in HS	255	1%	278	1%	297	1%	313	1%	350	1%	37%	1%	2%
Special Admit/K-12	1,091	5%	1,149	5%	1,387	6%	1,522	7%	1,502	6%	38%	6%	4%
Unreported	53	0%	42	0%	20	0%	7	0%	0	0%	-100%	0%	0%
<b>Total</b>	<b>21,736</b>	<b>100%</b>	<b>21,879</b>	<b>100%</b>	<b>22,444</b>	<b>100%</b>	<b>23,323</b>	<b>100%</b>	<b>24,252</b>	<b>100%</b>	<b>12%</b>	<b>100%</b>	<b>100%</b>

Source: SDCCD Information System

## Mesa College Section I: Headcount and Student Characteristics

**Headcount by Service Area of Residence:** Between Fall 2005 and Fall 2009, on average, 35% of the students who attended Mesa College resided within the Mesa service area. Among the three college service areas, the greatest proportion of Mesa students resided within its service area. Thirty percent of the students who attended Mesa College resided outside the Mesa service area.

Figure 1.9. Mesa College Headcount by Service Area of Residence

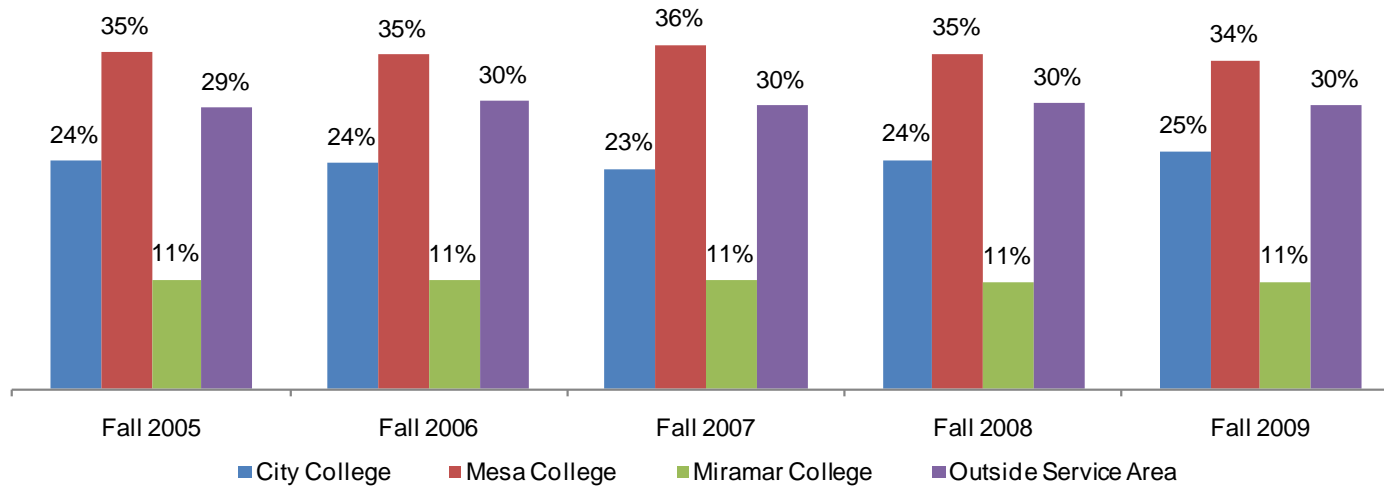


Table 1.9. Mesa College Headcount by Service Area of Residence

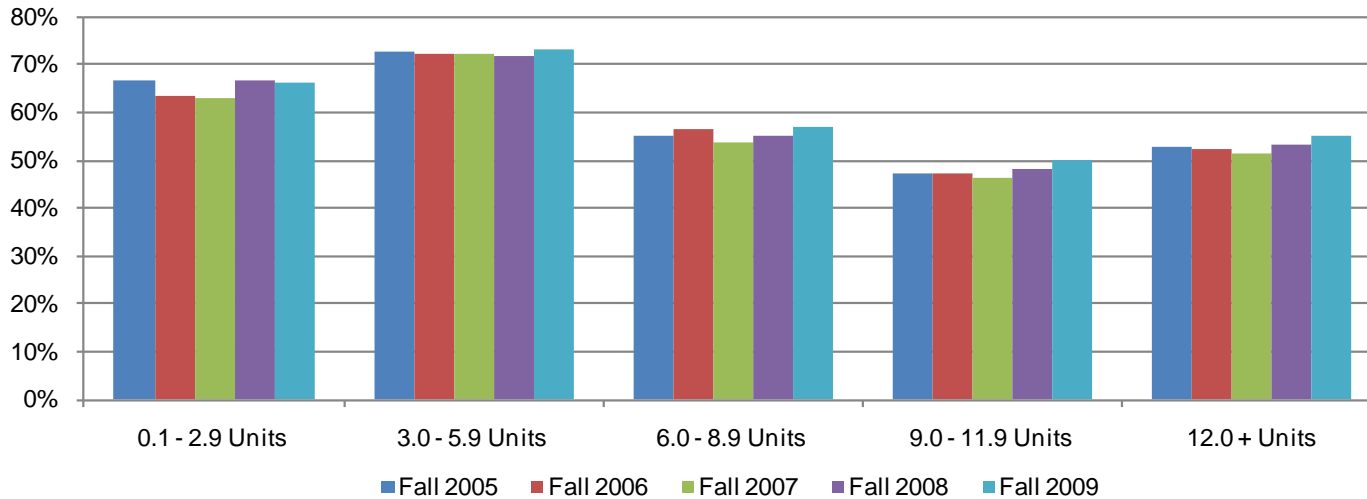
	Fall 2005		Fall 2006		Fall 2007		Fall 2008		Fall 2009		% Change Fall 05-09	College Average Fall 05-09	All Colleges Average Fall 05-09
City College	5,172	24%	5,159	24%	5,171	23%	5,585	24%	6,018	25%	16%	24%	30%
Mesa College	7,645	35%	7,627	35%	8,080	36%	8,177	35%	8,325	34%	9%	35%	22%
Miramar College	2,493	11%	2,486	11%	2,542	11%	2,604	11%	2,719	11%	9%	11%	12%
Outside Service Area	6,373	29%	6,565	30%	6,631	30%	6,950	30%	7,190	30%	13%	30%	36%
Unreported	53	0%	42	0%	20	0%	7	0%	0	0%	-100%	0%	0%
<b>Total</b>	<b>21,736</b>	<b>100%</b>	<b>21,879</b>	<b>100%</b>	<b>22,444</b>	<b>100%</b>	<b>23,323</b>	<b>100%</b>	<b>24,252</b>	<b>100%</b>	<b>12%</b>	<b>100%</b>	<b>100%</b>

Source: SDCCD Information System

## Mesa College Section I: Headcount and Student Characteristics

**Headcount by Units Attempted by Units Earned:** Table 1.10 shows the interplay between units attempted (in rows) and units earned (in columns). The greatest proportion of students who attempted and earned units were those in the 3.0-5.9 unit range on average (72%). The least proportion of students who attempted and earned units were those in the 9.0-11.9 unit range on average (48%). The number of students who attempted and earned 9.0-11.9 units increased by 24% over the five terms being reported.

Figure 1.10. Mesa College Headcount by Units Attempted by Units Earned





# Mesa College Section I: Headcount and Student Characteristics

Table 1.10. Mesa College Headcount by Units Attempted by Units Earned

		Units Earned						
		0 Units	0.1 - 2.9 Units	3.0 - 5.9 Units	6.0 - 8.9 Units	9.0 - 11.9 Units	12.0 + Units	
Units Attempted	Fall 2005	0.1 - 2.9 Units	34%	<b>66%</b>				
		3.0 - 5.9 Units	26%	1%	<b>73%</b>			
		6.0 - 8.9 Units	21%	2%	22%	<b>55%</b>		
		9.0 - 11.9 Units	16%	1%	15%	20%	<b>47%</b>	
		12.0 + Units	9%	1%	7%	12%	18%	<b>53%</b>
	Fall 2006	0.1 - 2.9 Units	37%	<b>63%</b>				
		3.0 - 5.9 Units	26%	1%	<b>72%</b>			
		6.0 - 8.9 Units	20%	1%	22%	<b>56%</b>		
		9.0 - 11.9 Units	16%	2%	13%	22%	<b>47%</b>	
		12.0 + Units	10%	1%	7%	12%	18%	<b>52%</b>
	Fall 2007	0.1 - 2.9 Units	37%	<b>63%</b>				
		3.0 - 5.9 Units	26%	1%	<b>72%</b>			
		6.0 - 8.9 Units	21%	2%	23%	<b>54%</b>		
		9.0 - 11.9 Units	16%	1%	15%	22%	<b>46%</b>	
		12.0 + Units	8%	1%	8%	12%	20%	<b>51%</b>
	Fall 2008	0.1 - 2.9 Units	33%	<b>67%</b>				
		3.0 - 5.9 Units	27%	2%	<b>72%</b>			
		6.0 - 8.9 Units	20%	2%	23%	<b>55%</b>		
		9.0 - 11.9 Units	15%	2%	14%	20%	<b>48%</b>	
		12.0 + Units	8%	1%	8%	12%	19%	<b>53%</b>
Fall 2009	0.1 - 2.9 Units	34%	<b>66%</b>					
	3.0 - 5.9 Units	26%	1%	<b>73%</b>				
	6.0 - 8.9 Units	19%	2%	23%	<b>57%</b>			
	9.0 - 11.9 Units	14%	1%	14%	21%	<b>50%</b>		
	12.0 + Units	7%	1%	7%	12%	18%	<b>55%</b>	
% Change Fall 05-09		--	10%	17%	22%	24%	2%	
College Average Fall 05-09		--	65%	72%	55%	48%	53%	

Source: SDCCD Information System

Note: Tutoring and non-graded courses were excluded. Percent change was based on counts.

## Mesa College Section I: Headcount and Student Characteristics

**Headcount by First Generation:** From Fall 2005 to Fall 2009, on average, almost one-quarter of the Mesa student population reported being first generation college students (23%). Both groups of students, those who were and those who were not first generation college students, displayed an increase in headcount between Fall 05 and Fall 09 (23% & 11%, respectively).

Figure 1.11. Mesa College Headcount by First Generation

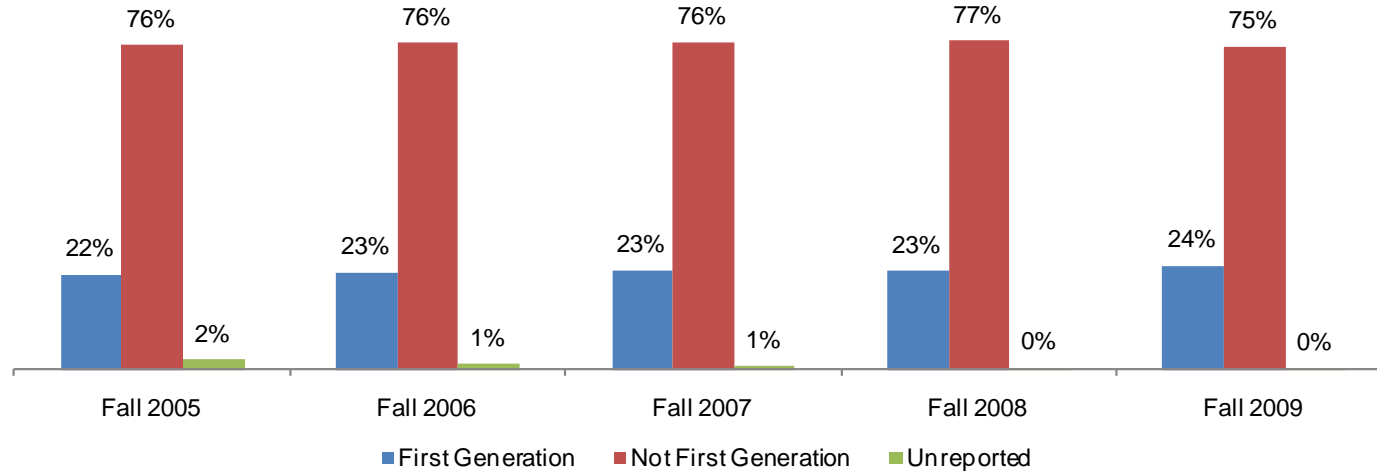


Table 1.11. Mesa College Headcount by First Generation

	Fall 2005		Fall 2006		Fall 2007		Fall 2008		Fall 2009		% Change Fall 05-09	College Average Fall 05-09	All Colleges Average Fall 05-09
First Generation	4,806	22%	4,936	23%	5,163	23%	5,352	23%	5,899	24%	23%	23%	25%
Not First Generation	16,472	76%	16,678	76%	17,124	76%	17,880	77%	18,304	75%	11%	76%	73%
Unreported	458	2%	265	1%	157	1%	91	0%	49	0%	-89%	1%	1%
<b>Total</b>	<b>21,736</b>	<b>100%</b>	<b>21,879</b>	<b>100%</b>	<b>22,444</b>	<b>100%</b>	<b>23,323</b>	<b>100%</b>	<b>24,252</b>	<b>100%</b>	<b>12%</b>	<b>100%</b>	<b>100%</b>

Source: SDCCD Information System

## Mesa College Section I: Headcount and Student Characteristics

**Headcount by Income Level:** Between Fall 2005 and Fall 2009, one-quarter (25%) of the Mesa student population reported making \$33,000 or more a year on average. The number of students who reported making between \$0-2,999 a year on average increased 45% between Fall 2005 and Fall 2009. It should be noted that there was a large percentage of students who did not report their income level (30%). Consequently, the data may not be representative of the actual income level of students at Mesa College.

Figure 1.12. Mesa College Headcount by Income Level

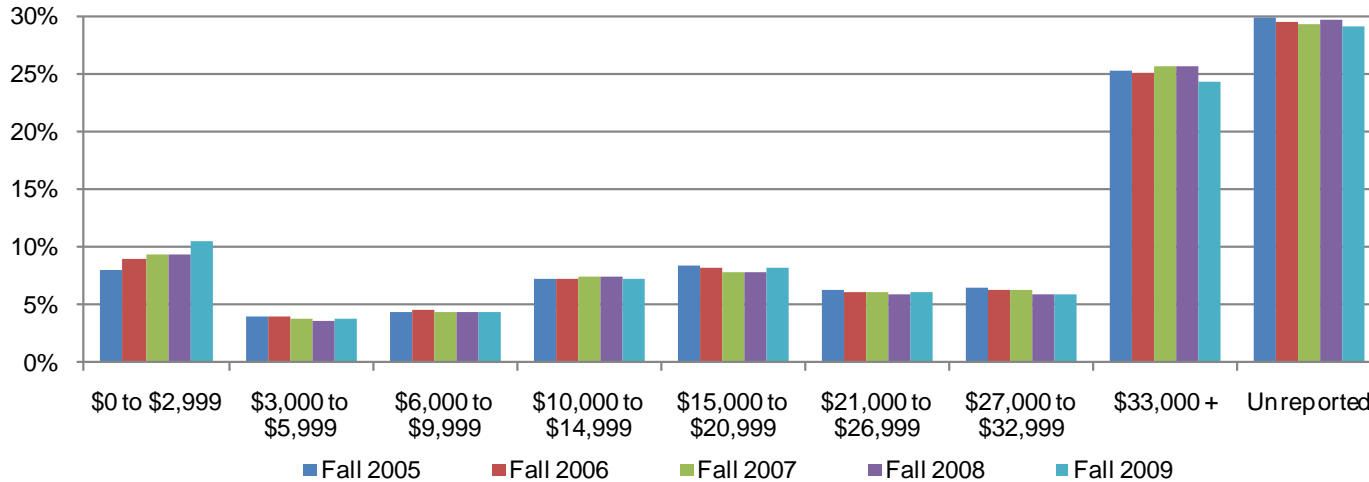


Table 1.12. Mesa College Headcount by Income Level

	Fall 2005		Fall 2006		Fall 2007		Fall 2008		Fall 2009		% Change Fall 05-09	College Average Fall 05-09	All Colleges Average Fall 05-09
\$0 to \$2,999	1,751	8%	1,965	9%	2,090	9%	2,207	9%	2,540	10%	45%	9%	9%
\$3,000 to \$5,999	867	4%	860	4%	860	4%	864	4%	935	4%	8%	4%	4%
\$6,000 to \$9,999	959	4%	997	5%	972	4%	1,005	4%	1,076	4%	12%	4%	4%
\$10,000 to \$14,999	1,574	7%	1,586	7%	1,657	7%	1,718	7%	1,759	7%	12%	7%	7%
\$15,000 to \$20,999	1,814	8%	1,797	8%	1,747	8%	1,842	8%	2,012	8%	11%	8%	8%
\$21,000 to \$26,999	1,380	6%	1,332	6%	1,383	6%	1,370	6%	1,492	6%	8%	6%	6%
\$27,000 to \$32,999	1,401	6%	1,369	6%	1,428	6%	1,384	6%	1,456	6%	4%	6%	6%
\$33,000 +	5,476	25%	5,509	25%	5,742	26%	6,003	26%	5,897	24%	8%	25%	24%
Unreported	6,514	30%	6,464	30%	6,565	29%	6,930	30%	7,085	29%	9%	30%	31%
<b>Total</b>	<b>21,736</b>	<b>100%</b>	<b>21,879</b>	<b>100%</b>	<b>22,444</b>	<b>100%</b>	<b>23,323</b>	<b>100%</b>	<b>24,252</b>	<b>100%</b>	<b>12%</b>	<b>100%</b>	<b>100%</b>

Source: SDCCD Information System

## Mesa College Section I: Headcount and Student Characteristics

**Headcount by Disability Support Programs and Services (DSPS):** On average, 97% of the Mesa student population had not received any type of disability support services between Fall 2005 and Fall 2009. This was comparable to the overall student population for all colleges in the district. Moreover, the number of students who had not received disability services and those who received disability services increased 12% and 25%, respectively, from Fall 2005 to Fall 2009.

Figure 1.13. Mesa College Headcount by Disability Support Programs and Services (DSPS)

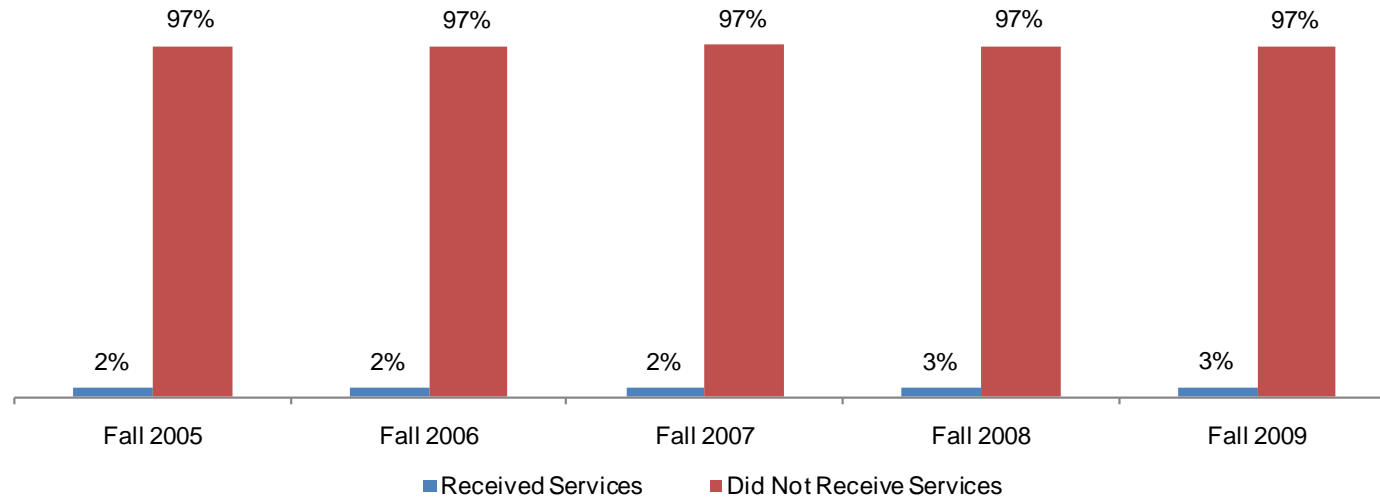


Table 1.13. Mesa College Headcount by Disability Support Programs and Services (DSPS)

	Fall 2005		Fall 2006		Fall 2007		Fall 2008		Fall 2009		% Change Fall 05-09	College Average Fall 05-09	All Colleges Average Fall 05-09
Received Services	510	2%	544	2%	545	2%	588	3%	638	3%	25%	2%	3%
Did Not Receive Services	21,173	97%	21,293	97%	21,879	97%	22,728	97%	23,614	97%	12%	97%	97%
Unreported	53	0%	42	0%	20	0%	7	0%	0	0%	-100%	0%	0%
<b>Total</b>	<b>21,736</b>	<b>100%</b>	<b>21,879</b>	<b>100%</b>	<b>22,444</b>	<b>100%</b>	<b>23,323</b>	<b>100%</b>	<b>24,252</b>	<b>100%</b>	<b>12%</b>	<b>100%</b>	<b>100%</b>

Source: SDCCD Information System

## Mesa College Section I: Headcount and Student Characteristics

**Headcount by Extended Opportunity Programs and Services (EOPS):** On average, 97% of the Mesa student population had not received EOPS services between Fall 2005 and Fall 2009. This was comparable to the overall student population for all colleges in the district. The number of students who received EOPS services decreased 25%, while the number of students who had not received EOPS services increased 13% from Fall 2005 to Fall 2009.

Figure 1.14. Mesa College Headcount by Extended Opportunity Programs and Services (EOPS)

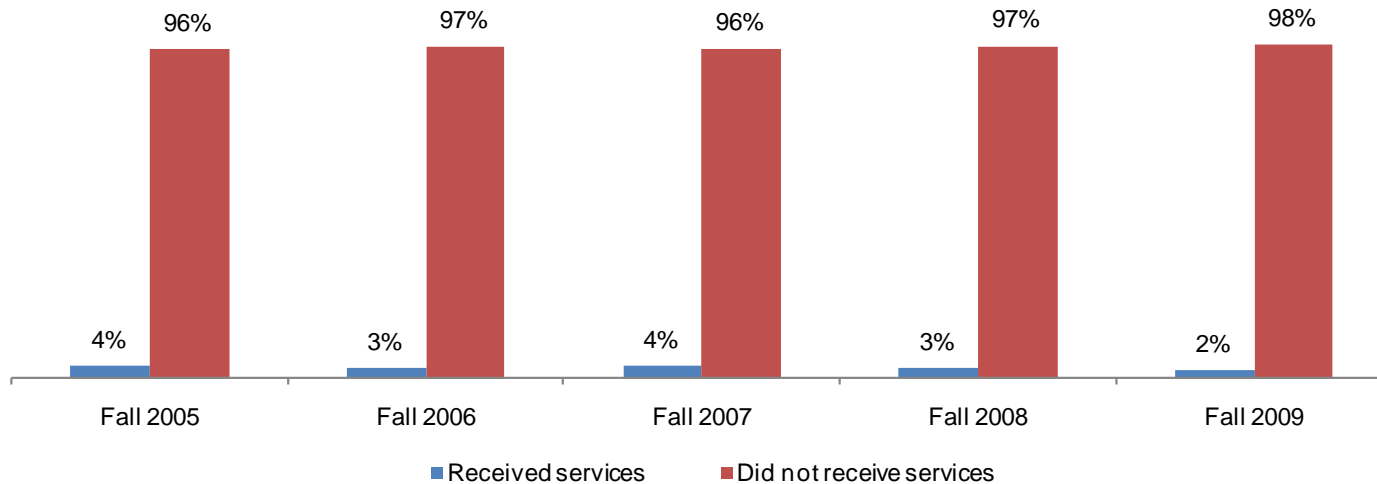


Table 1.14. Mesa College Headcount by Extended Opportunity Programs and Services (EOPS)

	Fall 2005		Fall 2006		Fall 2007		Fall 2008		Fall 2009		% Change Fall 05-09	College Average Fall 05-09	All Colleges Average Fall 05-09
Received Services	774	4%	626	3%	797	4%	660	3%	577	2%	-25%	3%	3%
Did Not Receive Services	20,909	96%	21,211	97%	21,627	96%	22,656	97%	23,675	98%	13%	97%	97%
Unreported	53	0%	42	0%	20	0%	7	0%	0	0%	-100%	0%	0%
<b>Total</b>	<b>21,736</b>	<b>100%</b>	<b>21,879</b>	<b>100%</b>	<b>22,444</b>	<b>100%</b>	<b>23,323</b>	<b>100%</b>	<b>24,252</b>	<b>100%</b>	<b>12%</b>	<b>100%</b>	<b>100%</b>

Source: SDCCD Information System

**Section II**  
**Term Persistence Rates**

## **Mesa College Section II: Term Persistence Rates**

---

This section of the Fact Book contains information on first-time to college student term persistence rates. For purposes of this report, term persistence rate is the measure of first-time to college students who were enrolled in a fall term as of census (eliminating drops and never attends prior to census) and who completed the term with a grade notation of A, B, C, P (Pass), D, F, I, NP (Not-Pass), or RD (Report Delayed), then were enrolled as of census in the subsequent spring term and received a grade notation for that term. The information in this section includes five years of data and is reported as follows:

- 1) Overall
- 2) Gender
- 3) Age
- 4) Ethnicity

## Mesa College Section II: Term Persistence Rates

**Overall Term Persistence:** The average term persistence rate of first-time Mesa students was 66% between the Fall 2005 and Fall 2009 cohorts. Persistence rates dipped to a low of 60% for the Fall 2005 cohort and peaked to a high of 69% for the Fall 2009 cohort. Overall, persistence rates increased 9% from the Fall 2005 cohort to the Fall 2009 cohort. The average term persistence rate of first-time Mesa students (66%) was comparable to the average term persistence rate of first-time students enrolled in all colleges in the district (67%).

Figure 2.1. Mesa College First-Time Student Overall Term Persistence

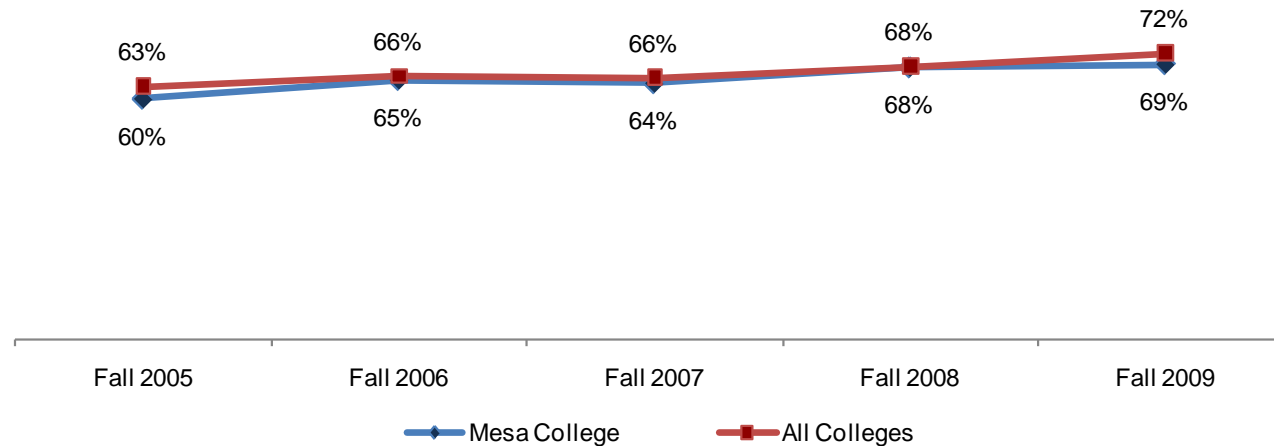


Table 2.1. Mesa College First-Time Student Overall Term Persistence

Cohort	Fall	Spring	Persistence	All Colleges Persistence Fall to Spring
Fall 2005	1,113	670	60%	63%
Fall 2006	1,615	1,048	65%	66%
Fall 2007	1,679	1,076	64%	66%
Fall 2008	1,733	1,179	68%	68%
Fall 2009	1,833	1,262	69%	72%
<b>Average</b>			<b>66%</b>	<b>67%</b>

Source: SDCCD Information System



## Mesa College Section II: Term Persistence Rates

**Term Persistence by Gender:** On average, female term persistence rates (67%) were higher than male term persistence rates (65%) between the Fall 2005 and Fall 2009 cohorts. Persistence rates increased for both female and male students from the Fall 2005 cohort to the Fall 2009 cohort (11% and 6%, respectively).

Figure 2.2. Mesa College First-Time Student Term Persistence by Gender

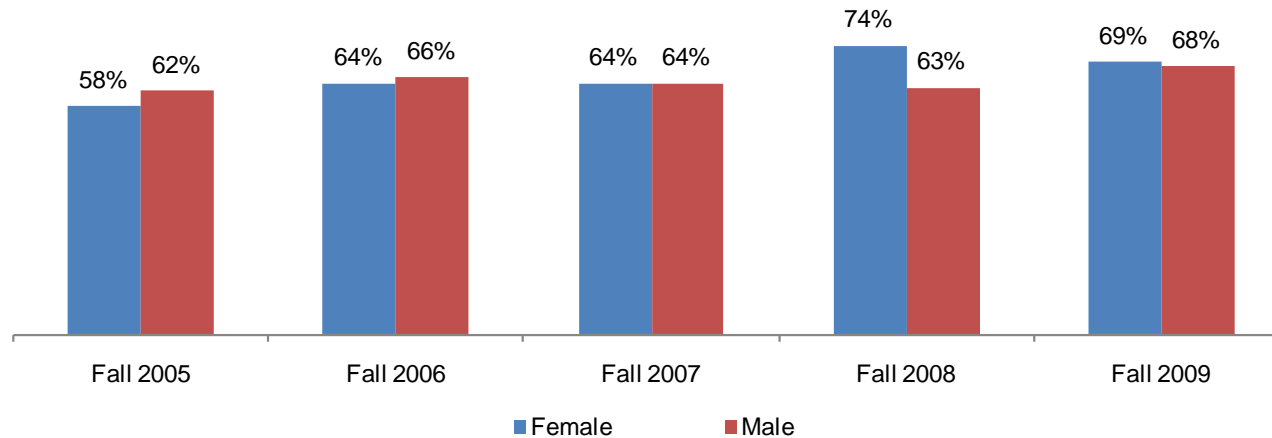


Table 2.2. Mesa College First-Time Student Term Persistence by Gender

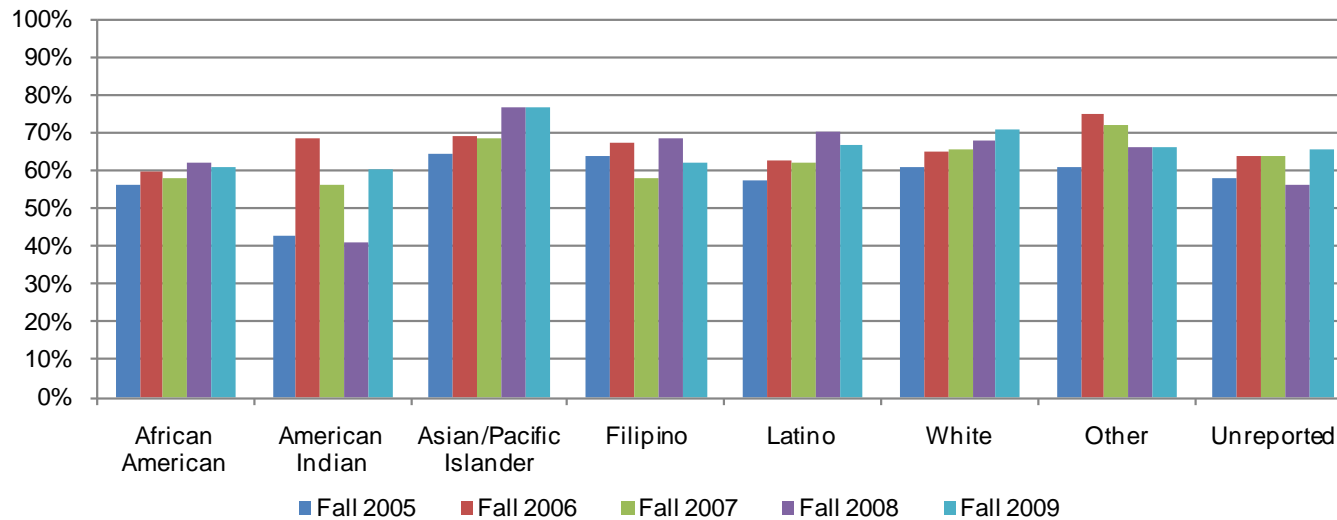
Cohort	Female			Male			Unreported		
	Fall	Spring	Persistence	Fall	Spring	Persistence	Fall	Spring	Persistence
Fall 2005	508	295	58%	605	375	62%	0	0	---
Fall 2006	773	496	64%	842	552	66%	0	0	---
Fall 2007	831	533	64%	848	543	64%	0	0	---
Fall 2008	818	603	74%	914	576	63%	1	0	---
Fall 2009	867	601	69%	966	661	68%	0	0	---
<b>Average</b>			<b>67%</b>			<b>65%</b>			<b>0%</b>

Source: SDCCD Information System

## Mesa College Section II: Term Persistence Rates

**Term Persistence by Ethnicity:** The ethnic groups with the highest term persistence rates, on average, were Asian/Pacific Islander students (71%), students who were categorized as 'Other' ethnicities (67%), and White students (66%). Persistence rates of Filipino students decreased 2%, from 64% in the Fall 2005 cohort to 62% in the Fall 2009 cohort. However, persistence rates for Asian/Pacific Islander, Latino, and White students increased between the Fall 2005 and Fall 2009 cohorts (13%, 10%, & 10%, respectively). Persistence rates peaked to a high of 77% for Asian/Pacific Islander students in the Fall 2008 and Fall 2009 cohorts.

Figure 2.3. Mesa College First-Time Student Term Persistence by Ethnicity



## Mesa College Section II: Term Persistence Rates

Table 2.3. Mesa College First-Time Student Term Persistence by Ethnicity

Cohort	African American			American Indian			Asian/Pacific Islander			Filipino		
	Fall	Spring	Persistence	Fall	Spring	Persistence	Fall	Spring	Persistence	Fall	Spring	Persistence
Fall 2005	85	48	56%	7	3	43%	177	114	64%	47	30	64%
Fall 2006	121	72	60%	16	11	69%	239	165	69%	74	50	68%
Fall 2007	134	78	58%	16	9	56%	247	169	68%	69	40	58%
Fall 2008	110	68	62%	17	7	41%	227	174	77%	79	54	68%
Fall 2009	160	97	61%	10	6	60%	263	202	77%	74	46	62%
<b>Average</b>			<b>60%</b>			<b>55%</b>			<b>71%</b>			<b>64%</b>

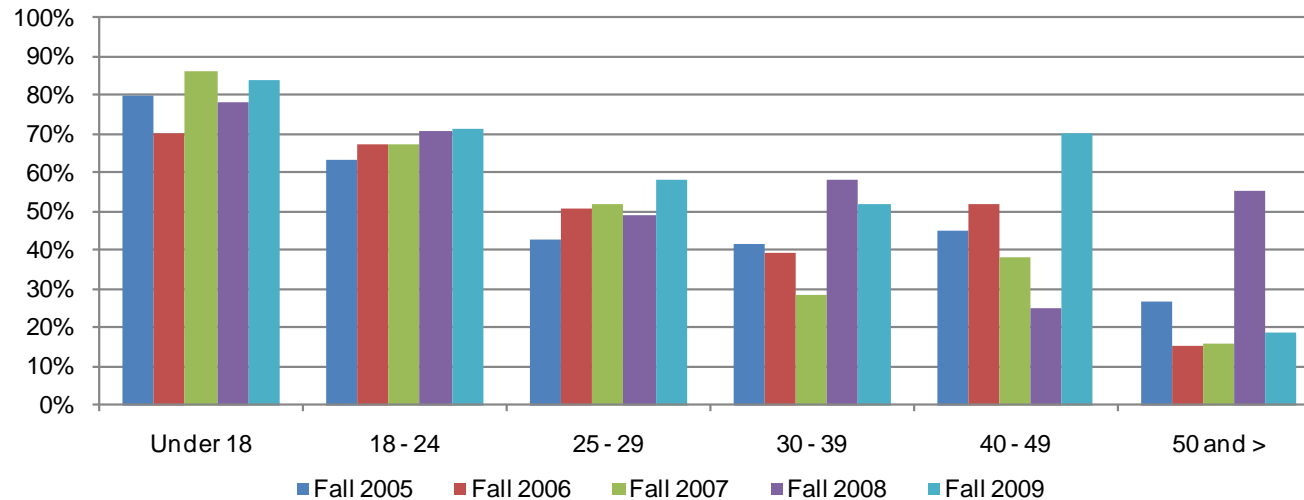
Cohort	Latino			White			Other			Unreported		
	Fall	Spring	Persistence	Fall	Spring	Persistence	Fall	Spring	Persistence	Fall	Spring	Persistence
Fall 2005	235	135	57%	435	265	61%	51	31	61%	76	44	58%
Fall 2006	335	210	63%	659	427	65%	36	27	75%	135	86	64%
Fall 2007	403	249	62%	646	422	65%	53	38	72%	111	71	64%
Fall 2008	413	289	70%	705	480	68%	47	31	66%	135	76	56%
Fall 2009	494	331	67%	653	462	71%	74	49	66%	105	69	66%
<b>Average</b>			<b>65%</b>			<b>66%</b>			<b>67%</b>			<b>62%</b>

Source: SDCCD Information System

## Mesa College Section II: Term Persistence Rates

**Term Persistence by Age:** A general trend among the Fall 2005 to Fall 2009 cohorts showed that as the age increased, term persistence decreased. For students under age 18, persistence rates peaked to a high of 86% in the Fall 2007 cohort. Persistence rates of those students 40 to 49 years of age increased 25%, from 45% in the Fall 2005 cohort to 70% in the Fall 2009 cohort. However, students age 50 and older displayed an 8% decline in persistence rates between the Fall 2005 and Fall 2009 cohorts.

Figure 2.4. Mesa College First-Time Student Term Persistence by Age



## Mesa College Section II: Term Persistence Rates

Table 2.4. Mesa College First-Time Student Term Persistence by Age

Cohort	Under 18			18 - 24			25 - 29		
	Fall	Spring	Persistence	Fall	Spring	Persistence	Fall	Spring	Persistence
Fall 2005	25	20	80%	921	581	63%	73	31	42%
Fall 2006	20	14	70%	1,412	953	67%	81	41	51%
Fall 2007	22	19	86%	1,462	981	67%	87	45	52%
Fall 2008	23	18	78%	1,469	1,041	71%	114	56	49%
Fall 2009	49	41	84%	1,514	1,076	71%	137	80	58%
<b>Average</b>			<b>81%</b>			<b>68%</b>			<b>51%</b>

Cohort	30 - 39			40 - 49			50 and >		
	Fall	Spring	Persistence	Fall	Spring	Persistence	Fall	Spring	Persistence
Fall 2005	48	20	42%	31	14	45%	15	4	27%
Fall 2006	64	25	39%	25	13	52%	13	2	15%
Fall 2007	60	17	28%	29	11	38%	19	3	16%
Fall 2008	72	42	58%	28	7	25%	27	15	56%
Fall 2009	79	41	52%	27	19	70%	27	5	19%
<b>Average</b>			<b>45%</b>			<b>46%</b>			<b>29%</b>

Source: SDCCD Information System

**Section III**  
**Student Outcomes**

## Mesa College Section III: Student Outcomes

---

This section of the Fact Book contains information on various student outcomes which may be considered indirect assessments of student learning. The outcomes included in this section are: 1) Annual Successful Course Completion Rates, 2) Annual Retention Rates, 3) Annual GPA, 4) Annual Awards Conferred, and 5) Annual Transfer Volume. All of the information in this section includes five years of data by gender, age, and ethnicity. The following describes in detail each of the outcomes listed.

- 1) Successful Course Completion Rates. The first outcome reported in this section is successful course completion, or student success rate. For purposes of this report, the success rate is the percentage of students who completed a course with a grade of A, B, C, or P out of total enrollments as of census. *Note: Tutoring and non-credit classes are excluded.*
- 2) Retention Rates. The second outcome reported in this section is retention rate. For purposes of this report, the retention rate is the percentage of students who completed a course with a grade of A, B, C, D, F, P, NP, I, or RD out of total enrollments as of census.
- 3) Annual GPA. The third outcome reported in this section is annual GPA. For purposes of this report, the annual GPA is the cumulative term grade point average of all courses taken for a grade in one academic year.
- 4) Annual Awards Conferred. The fourth outcome reported in this section is the annual awards conferred. For purposes of this report, the annual awards conferred are the total number of associate degrees and certificates awarded in a single academic year (summer, fall, and spring). *Note: Annual awards conferred that are reported in this Fact Book are considered preliminary data. Please see the upcoming Awards Conferred Supplement report for final annual awards conferred numbers.*
- 5) Annual Transfer Volume. The last outcome reported in this section is the number of students who transfer annually. For the purposes of this report, the annual transfer volume represents the total number of students who transferred to a 4-year institution either during the last semester they were enrolled at an SDCCD college or up to three semesters following the last semester they were enrolled at an SDCCD college. The last semester attended includes students who stopped out for one or more semesters and enrolled at a later date (reverse transfer). The student must also have completed 12 or more cumulative transferrable units earned within 12 consecutive semesters preceding and including the last semester enrolled at SDCCD.

*Note: Transfer volume that is reported in this Fact Book is considered preliminary data. Please see the upcoming Spring 2011 SDCCD Transfer Report: A Longitudinal Perspective for final transfer volume numbers.*

## Mesa College Section III: Student Outcomes (Success Rates)

**Overall Success Rates:** The annual success rates for Mesa College remained relatively stable from 2005/06 to 2009/10, with an average of 67%. This success rate five-year average was equal to the success rate five-year average of all colleges in the district (67%). On average, the Mesa College annual success rates were comparable to the annual success rates of all colleges in the district between 2005/06 and 2009/10.

Figure 3.1. Mesa College Overall Success Rates

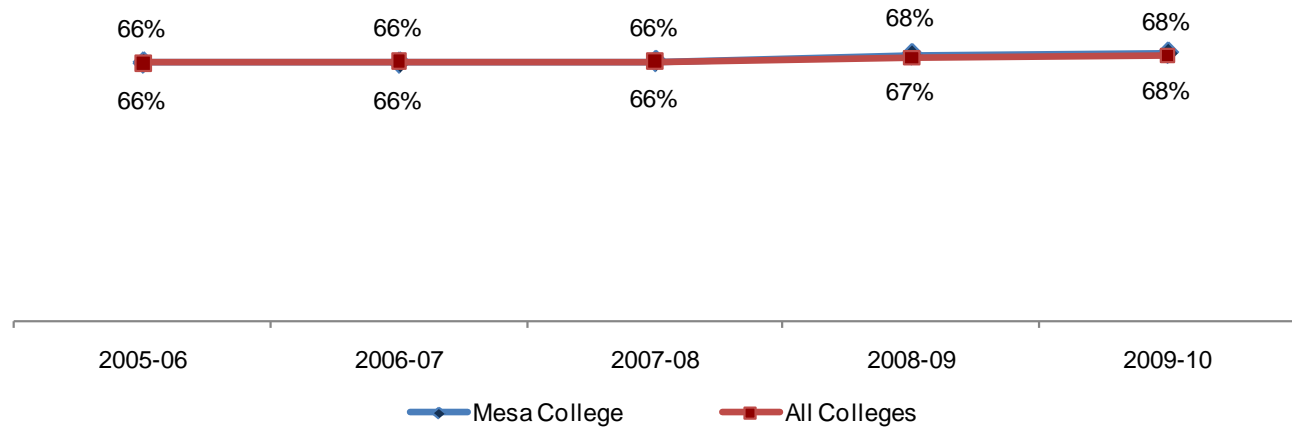


Table 3.1. Mesa College Overall Success Rates

	2005-06	2006-07	2007-08	2008-09	2009-10	% Change 05/06-09/10	College Average 2005-10	All Colleges Average 2005-10
<b>Average</b>	66%	66%	66%	68%	68%	2%	67%	67%

Source: SDCCD Information System

Note: Tutoring classes were excluded.



## Mesa College Section III: Student Outcomes (Success Rates)

**Success Rates by Gender:** On average, female students (69%) had higher success rates compared to their male student counterpart (65%) between 2005/06 and 2009/10. At Mesa College, female students had a higher average success rate than the female student population of all colleges in the district (67%), while male students at Mesa College had a slightly lower average success rate when compared to the male student population of all colleges in the district (66%). The average success rate of female students at Mesa exceeded the average success rates of both the general student populations at Mesa College and all colleges in the district (67% each), while the average success rate of male students at Mesa was lower than the same averages.

Figure 3.2. Mesa College Success Rates by Gender

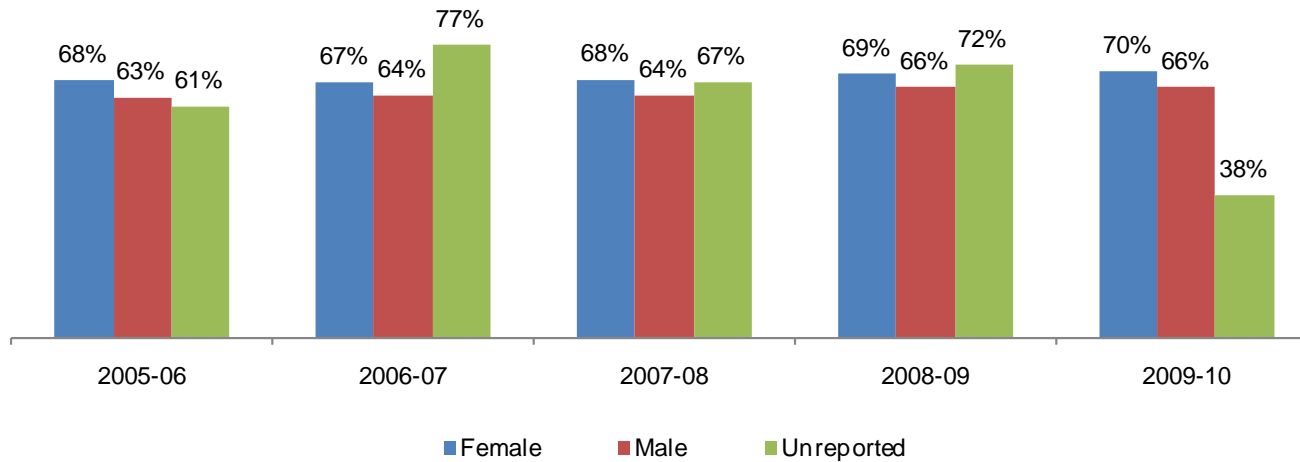


Table 3.2. Mesa College Success Rates by Gender

	2005-06	2006-07	2007-08	2008-09	2009-10	% Change 05/06-09/10	College Average 2005-10	All Colleges Average 2005-10
Female	68%	67%	68%	69%	70%	2%	69%	67%
Male	63%	64%	64%	66%	66%	3%	65%	66%
Unreported	61%	77%	67%	72%	38%	-24%	68%	69%
<b>Average</b>	<b>66%</b>	<b>66%</b>	<b>66%</b>	<b>68%</b>	<b>68%</b>	<b>2%</b>	<b>67%</b>	<b>67%</b>

Source: SDCCD Information System

Note: Tutoring classes were excluded.

## Mesa College Section III: Student Outcomes (Success Rates)

**Success Rates by Ethnicity:** On average, the ethnic groups with the highest success rates were Asian/Pacific Islander students (71%), White students (70%), and students categorized as 'Other' ethnicities (67%) between 2005/06 and 2009/10. The average success rates of African American, American Indian, Filipino, and Latino students were lower than the average success rates of both the general student populations at Mesa College and all colleges in the district (67% each). The average success rates of Asian/Pacific Islander, White students, and students categorized as 'Other' ethnicities exceeded or were comparable to the same averages. Students of all ethnicities exhibited an increase in success rate between 2005/06 and 2009/10.

Figure 3.3. Mesa College Success Rates by Ethnicity

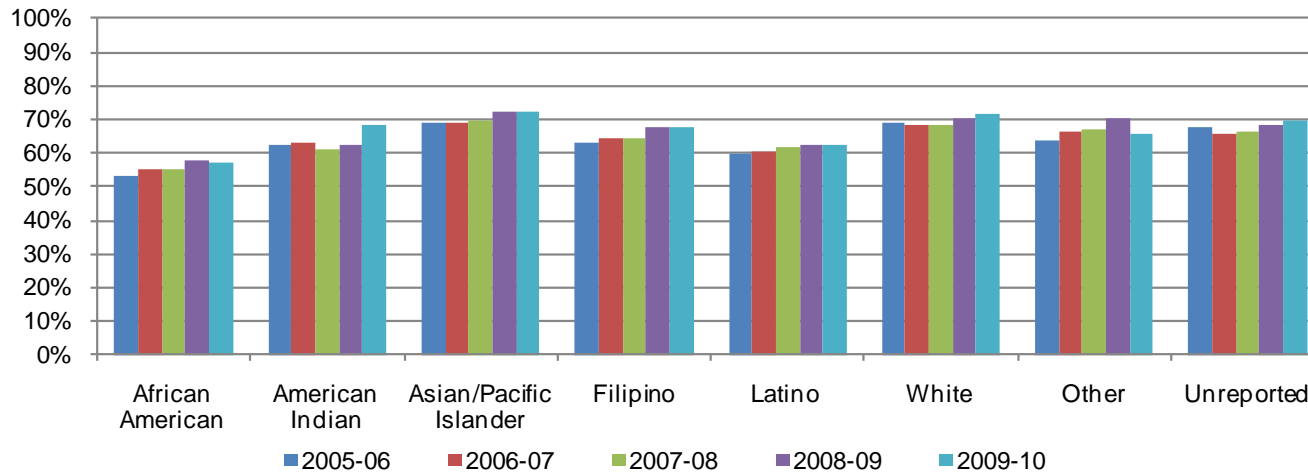


Table 3.3. Mesa College Success Rates by Ethnicity

	2005-06	2006-07	2007-08	2008-09	2009-10	% Change 05/06-09/10	College Average 2005-10	All Colleges Average 2005-10
African American	53%	55%	55%	58%	57%	4%	56%	55%
American Indian	62%	63%	61%	63%	68%	6%	63%	63%
Asian/Pacific Islander	69%	69%	70%	72%	72%	3%	71%	71%
Filipino	63%	65%	65%	68%	67%	4%	65%	66%
Latino	60%	60%	61%	62%	62%	3%	61%	62%
White	69%	68%	69%	70%	72%	3%	70%	71%
Other	64%	66%	67%	70%	66%	2%	67%	65%
Unreported	67%	65%	67%	68%	70%	2%	68%	68%
<b>Average</b>	<b>66%</b>	<b>66%</b>	<b>66%</b>	<b>68%</b>	<b>68%</b>	<b>2%</b>	<b>67%</b>	<b>67%</b>

Source: SDCCD Information System

Note: Tutoring classes were excluded.

## Mesa College Section III: Student Outcomes (Success Rates)

**Success Rates by Age:** With the exception of students who were under age 18, a general trend between 2005/06 and 2009/10 showed as age increased so did success rates. Students who were below 18 years old had the highest success rate (87%) on average. With the exception of students ages 18 to 24 (64%), the average success rates of all other age groups were equal to or higher than the average success rates of both the general student populations at Mesa College and all colleges in the district (67% each).

Figure 3.4. Mesa College Success Rates by Age

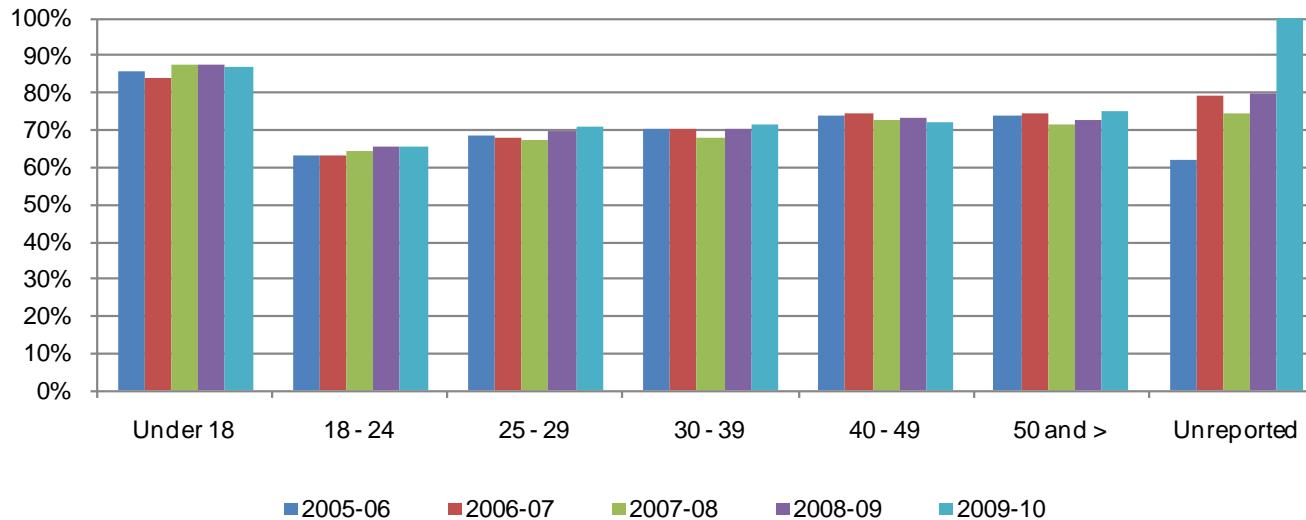


Table 3.4. Mesa College Success Rates by Age

	2005-06	2006-07	2007-08	2008-09	2009-10	% Change 05/06-09/10	College Average 2005-10	All Colleges Average 2005-10
Under 18	86%	84%	88%	88%	87%	1%	87%	84%
18 - 24	63%	63%	64%	66%	66%	2%	64%	64%
25 - 29	69%	68%	67%	69%	71%	2%	69%	69%
30 - 39	71%	70%	68%	70%	72%	1%	70%	71%
40 - 49	74%	74%	72%	73%	72%	-2%	73%	73%
50 and >	74%	75%	71%	73%	75%	1%	74%	73%
Unreported	62%	79%	75%	80%	100%	38%	72%	72%
<b>Average</b>	<b>66%</b>	<b>66%</b>	<b>66%</b>	<b>68%</b>	<b>68%</b>	<b>2%</b>	<b>67%</b>	<b>67%</b>

Source: SDCCD Information System

Note: Tutoring classes were excluded.

## Mesa College Section III: Student Outcomes (Retention Rates)

**Overall Retention Rates:** The annual retention rates for Mesa College increased 3% between 2005/06 and 2009/10, with an average of 83%. This retention rate five-year average was comparable to the retention rate five-year average of all colleges in the district (83%). On average, the Mesa College annual retention rates were lower by one percentage point compared to the annual retention rates of all colleges in the district between 2005/06 and 2008/09, with the two annual retention rates becoming equal (both 85%) in 2009/10.

Figure 3.5. Mesa College Overall Retention Rates

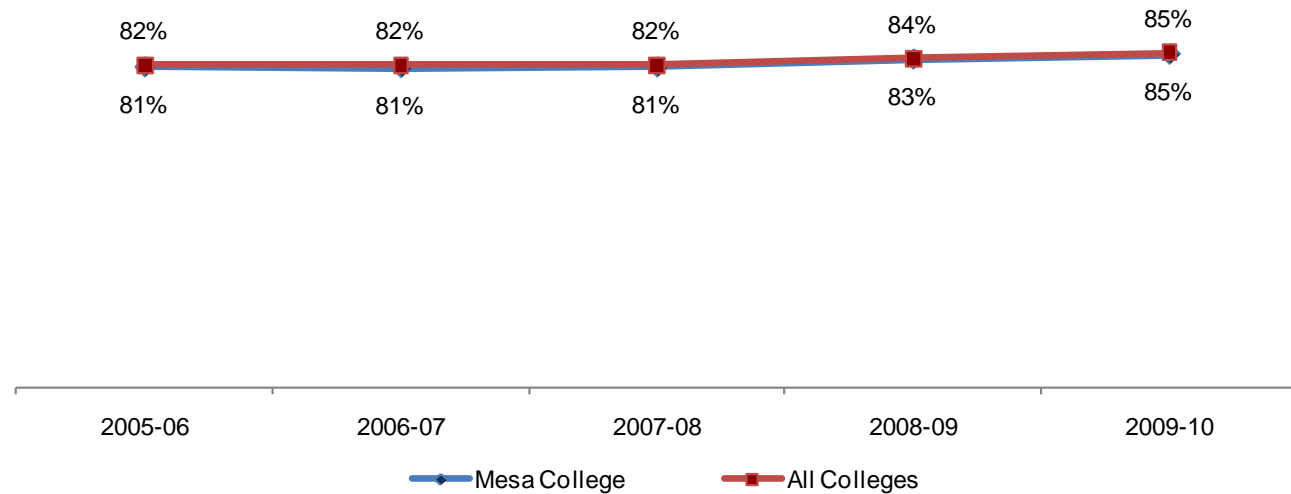


Table 3.5. Mesa College Overall Retention Rates

	2005-06	2006-07	2007-08	2008-09	2009-10	% Change 05/06-09/10	College Average 2005-10	All Colleges Average 2005-10
<b>Average</b>	81%	81%	81%	83%	85%	3%	83%	83%

Source: SDCCD Information System

## Mesa College Section III: Student Outcomes (Retention Rates)

**Retention Rates by Gender:** On average, female student retention rates (83%) were comparable to their male student counterpart (82%) between 2005/06 and 2009/10. These retention rates were comparable to the average retention rates of the male and female student populations of all colleges in the district (83% for each). The average retention rate of male students at Mesa College was lower than the average retention rates of both the general student population at Mesa College and all colleges in the district, while the average retention rate of female students at Mesa College was equal to the same averages.

Figure 3.6. Mesa College Retention Rates by Gender

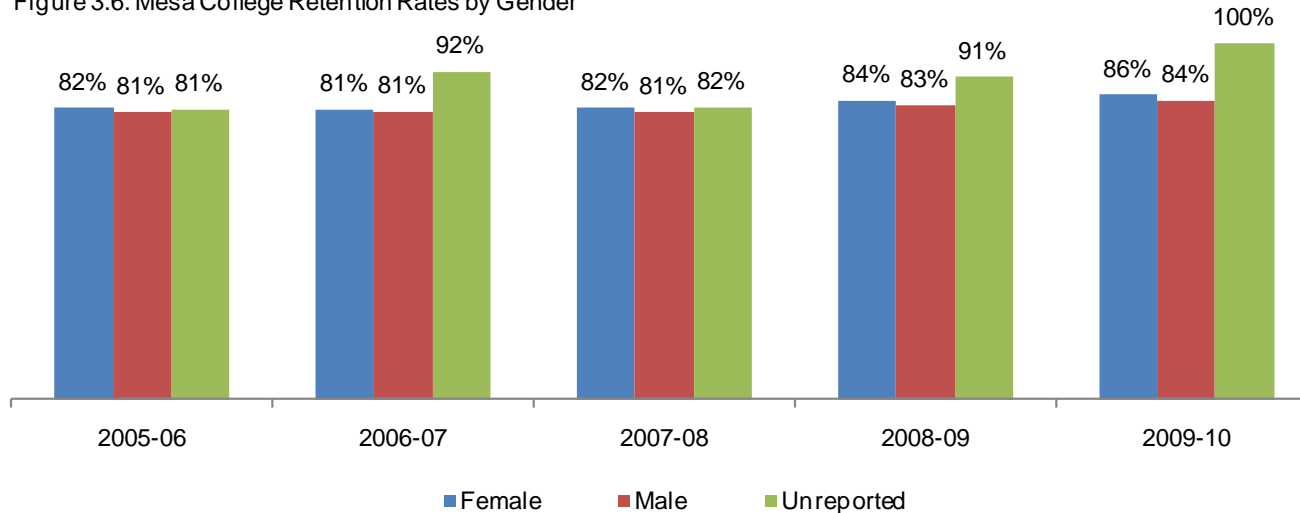


Table 3.6. Mesa College Retention Rates by Gender

	2005-06	2006-07	2007-08	2008-09	2009-10	% Change 05/06-09/10	College Average 2005-10	All Colleges Average 2005-10
Female	82%	81%	82%	84%	86%	4%	83%	83%
Male	81%	81%	81%	83%	84%	3%	82%	83%
Unreported	81%	92%	82%	91%	100%	19%	86%	88%
<b>Average</b>	<b>81%</b>	<b>81%</b>	<b>81%</b>	<b>83%</b>	<b>85%</b>	<b>3%</b>	<b>83%</b>	<b>83%</b>

Source: SDCCD Information System

## Mesa College Section III: Student Outcomes (Retention Rates)

**Retention Rates by Ethnicity:** Between 2005/06 and 2009/10, the ethnic groups with the highest retention rates, on average, were Asian/Pacific Islander students (85%), students categorized as 'Other' ethnicities (84%), and White students (83%). The average retention rates of African American, American Indian, Filipino, and Latino students were lower than the average retention rates of both the general student populations at Mesa College and all colleges in the district (83% each). The average retention rates of Asian/Pacific Islander students, students categorized as 'Other' ethnicities, and White students exceeded the same averages.

Figure 3.7. Mesa College Retention Rates by Ethnicity

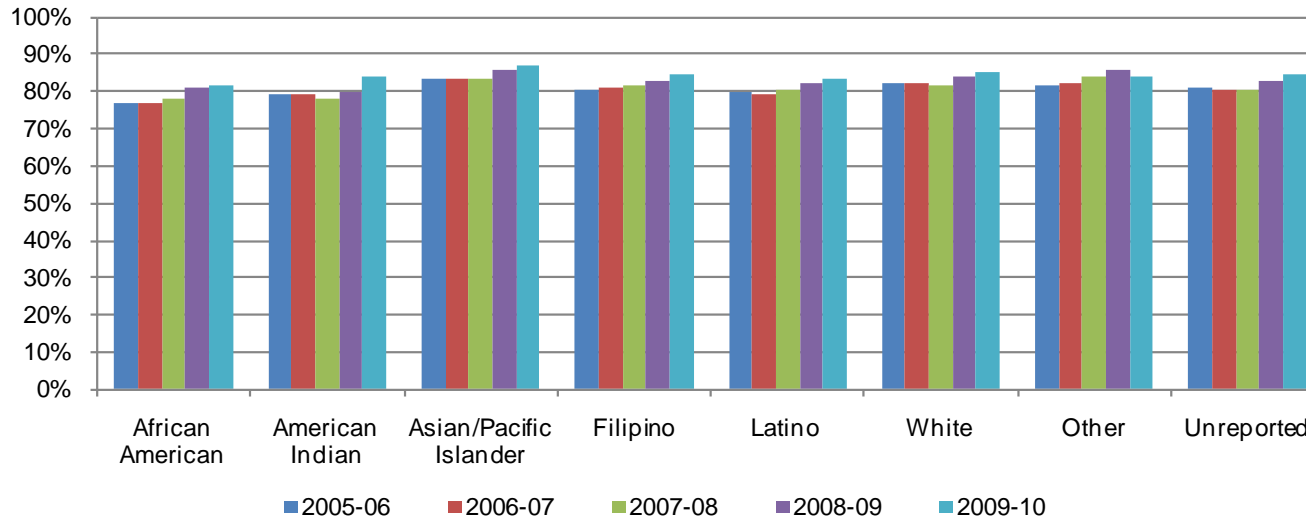


Table 3.7. Mesa College Retention Rates by Ethnicity

	2005-06	2006-07	2007-08	2008-09	2009-10	% Change 05/06-09/10	College Average 2005-10	All Colleges Average 2005-10
African American	77%	77%	78%	81%	82%	5%	79%	79%
American Indian	79%	79%	78%	80%	84%	5%	80%	80%
Asian/Pacific Islander	84%	83%	84%	86%	87%	3%	85%	85%
Filipino	80%	81%	81%	83%	84%	4%	82%	83%
Latino	80%	80%	80%	82%	84%	4%	81%	83%
White	82%	82%	82%	84%	85%	3%	83%	84%
Other	82%	82%	84%	86%	84%	3%	84%	84%
Unreported	81%	80%	80%	83%	84%	3%	82%	83%
<b>Average</b>	<b>81%</b>	<b>81%</b>	<b>81%</b>	<b>83%</b>	<b>85%</b>	<b>3%</b>	<b>83%</b>	<b>83%</b>

Source: SDCCD Information System

## Mesa College Section III: Student Outcomes (Retention Rates)

**Retention Rates by Age:** Between 2005/06 and 2009/10, the age groups with the highest retention rates, on average, were students who were below 18 years old (95%), and both students between ages 40-49 and 50 years and older (83% and 84%, respectively). The average retention rates of students between ages 18 and 39 years old (82% each) were lower than the average retention rates of both the general student populations at Mesa College and all colleges in the district (83% each). The average retention rates of students who were below 18 years old, students between ages 40-49, and 50 years and older exceeded the same averages.

Figure 3.8. Mesa College Retention Rates by Age

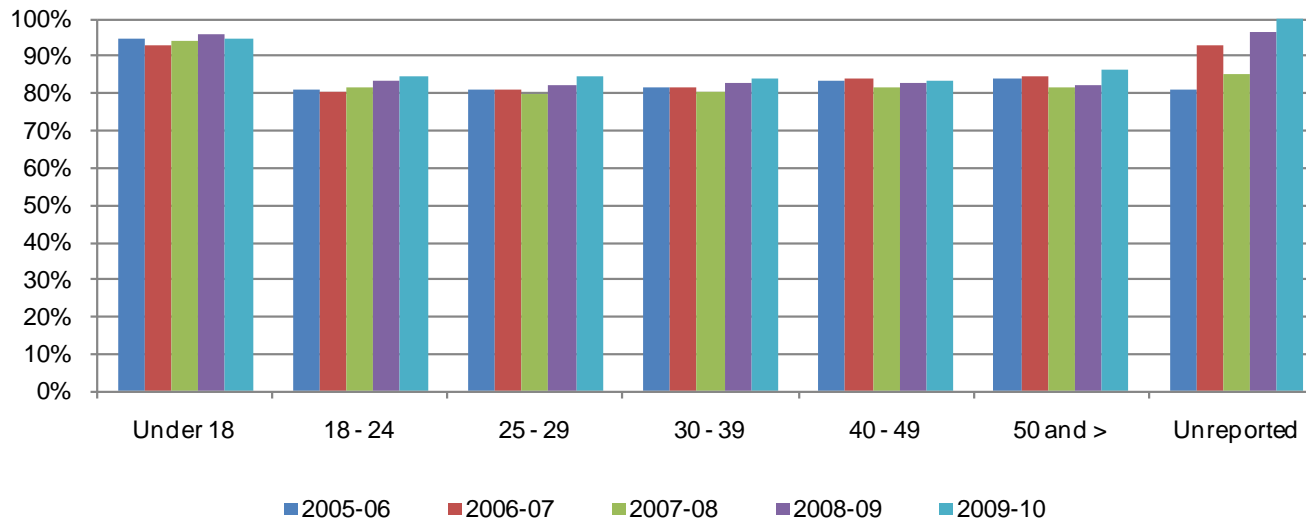


Table 3.8. Mesa College Retention Rates by Age

	2005-06	2006-07	2007-08	2008-09	2009-10	% Change 05/06-09/10	College Average 2005-10	All Colleges Average 2005-10
Under 18	95%	93%	94%	96%	95%	0%	95%	94%
18 - 24	81%	81%	81%	84%	85%	4%	82%	83%
25 - 29	81%	81%	80%	82%	84%	3%	82%	83%
30 - 39	82%	82%	80%	83%	84%	3%	82%	83%
40 - 49	83%	84%	82%	83%	84%	0%	83%	84%
50 and >	84%	84%	82%	82%	86%	2%	84%	84%
Unreported	81%	93%	85%	97%	100%	19%	87%	90%
<b>Average</b>	<b>81%</b>	<b>81%</b>	<b>81%</b>	<b>83%</b>	<b>85%</b>	<b>3%</b>	<b>83%</b>	<b>83%</b>

Source: SDCCD Information System

## Mesa College Section III: Student Outcomes (Annual GPA)

**Overall Annual GPA:** The annual GPAs for Mesa College increased between 2005/06 and 2009/10, with an average of 2.64. Mesa's collegewide annual GPA five-year average was slightly lower than the annual GPA five-year average of all colleges in the district (2.67). The Mesa College annual GPAs were relatively lower, on average, compared to the annual GPAs of all colleges in the district between 2005/06 and 2009/10.

Figure 3.9. Mesa College Overall Annual GPA

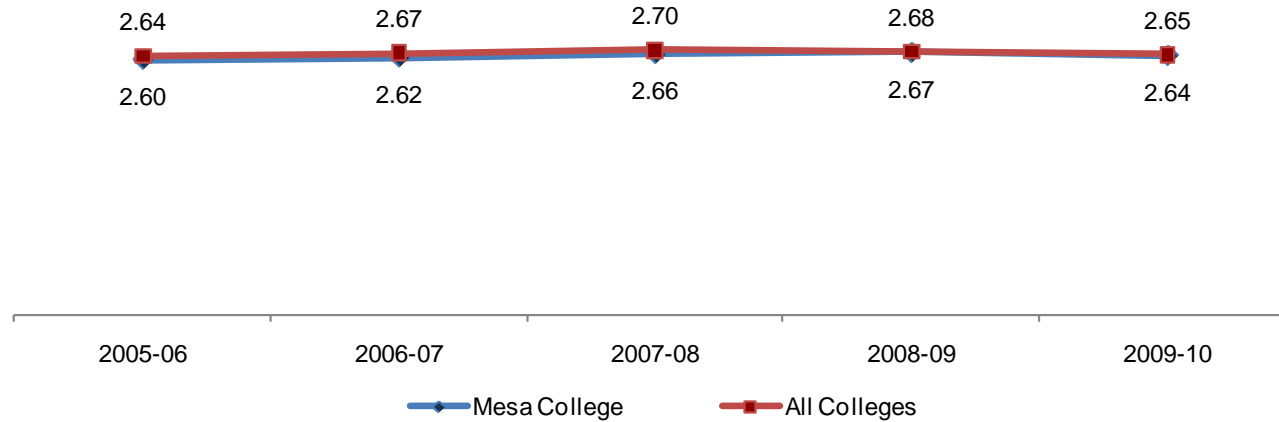


Table 3.9. Mesa College Overall Annual GPA

	2005-06	2006-07	2007-08	2008-09	2009-10	College Average 2005-10	All Colleges Average 2005-10
<b>Average</b>	<b>2.60</b>	<b>2.62</b>	<b>2.66</b>	<b>2.67</b>	<b>2.64</b>	<b>2.64</b>	<b>2.67</b>

Source: SDCCD Information System



## Mesa College Section III: Student Outcomes (Annual GPA)

**Annual GPA by Gender:** Between 2005/06 and 2009/10, male students, on average, had lower GPAs than their female student counterpart (2.53 and 2.74, respectively). The average annual GPA of female students at Mesa College was higher compared to the average annual GPA of the female student population of all colleges in the district (2.71), while the average annual GPA of male students at Mesa College was lower compared to the average annual GPA of the male student population of all colleges in the district (2.62). The average annual GPA of the female student population at Mesa was higher than the average annual GPAs of both the general student populations at Mesa College (2.64) and all colleges in the district (2.67). The average annual GPA of male students at Mesa College was lower than the same averages.

Figure 3.10. Mesa College Annual GPA by Gender

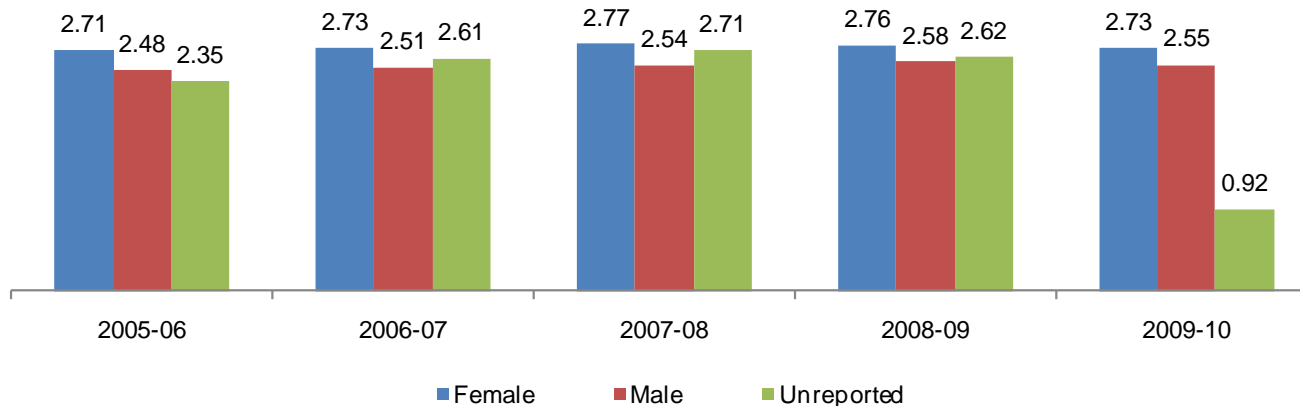


Table 3.10. Mesa College Annual GPA by Gender

	2005-06	2006-07	2007-08	2008-09	2009-10	College Average 2005-10	All Colleges Average 2005-10
Female	2.71	2.73	2.77	2.76	2.73	2.74	2.71
Male	2.48	2.51	2.54	2.58	2.55	2.53	2.62
Unreported	2.35	2.61	2.71	2.62	0.92	2.48	2.66
<b>Average</b>	<b>2.60</b>	<b>2.62</b>	<b>2.66</b>	<b>2.67</b>	<b>2.64</b>	<b>2.64</b>	<b>2.67</b>

Source: SDCCD Information System

## Mesa College Section III: Student Outcomes (Annual GPA)

**Annual GPA by Ethnicity:** Both White students (2.77) and Asian/Pacific Islander students (2.76) had the highest GPAs on average between 2005/06 and 2009/10. The average annual GPAs of African American, American Indian, Filipino, and Latino students were lower than the average annual GPAs of both the general student populations at Mesa College and all colleges in the district (2.64 & 2.67, respectively), while the average annual GPAs of Asian/Pacific Islander and White students exceeded the same averages.

Figure 3.11. Mesa College Annual GPA by Ethnicity

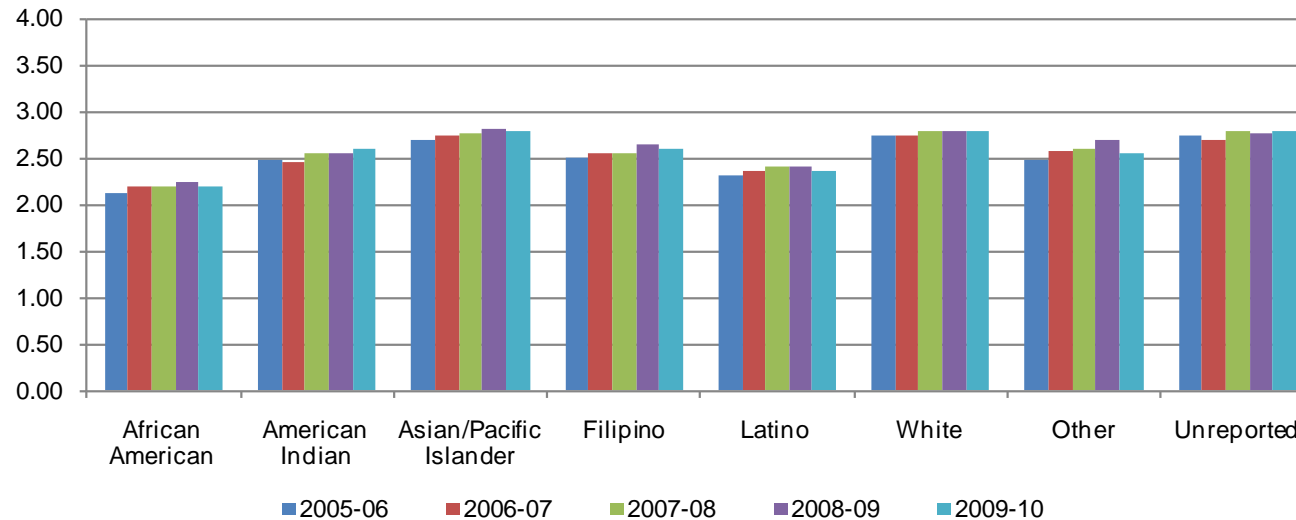


Table 3.11. Mesa College Annual GPA by Ethnicity

	2005-06	2006-07	2007-08	2008-09	2009-10	College Average 2005-10	All Colleges Average 2005-10
African American	2.12	2.20	2.19	2.25	2.19	2.19	2.22
American Indian	2.49	2.46	2.55	2.55	2.60	2.53	2.57
Asian/Pacific Islander	2.68	2.74	2.78	2.82	2.80	2.76	2.79
Filipino	2.51	2.56	2.55	2.65	2.59	2.57	2.60
Latino	2.32	2.37	2.41	2.40	2.37	2.38	2.43
White	2.74	2.74	2.79	2.79	2.79	2.77	2.86
Other	2.48	2.56	2.60	2.69	2.56	2.58	2.57
Unreported	2.75	2.70	2.79	2.76	2.78	2.76	2.79
<b>Average</b>	<b>2.60</b>	<b>2.62</b>	<b>2.66</b>	<b>2.67</b>	<b>2.64</b>	<b>2.64</b>	<b>2.67</b>

Source: SDCCD Information System

## Mesa College Section III: Student Outcomes (Annual GPA)

**Annual GPA by Age:** With the exception of students who were under age 18, a general trend between 2005/06 and 2009/10 showed as age increased so did GPA. The average annual GPA of students who were between ages 18-24 (2.49) was lower than the average annual GPAs of both the general student populations at Mesa College and all colleges in the district (2.64 & 2.67, respectively). The average annual GPAs of all other age groups exceeded the same averages.

Figure 3.12. Mesa College Annual GPA by Age

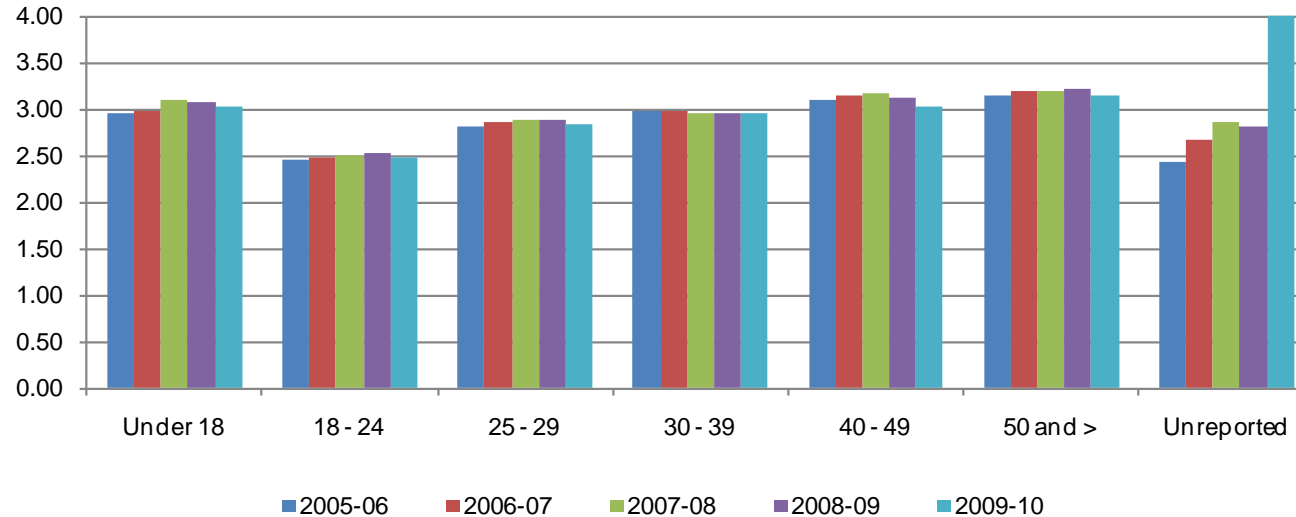


Table 3.12. Mesa College Annual GPA by Age

	2005-06	2006-07	2007-08	2008-09	2009-10	College Average 2005-10	All Colleges Average 2005-10
Under 18	2.95	2.98	3.11	3.07	3.03	3.03	2.96
18 - 24	2.45	2.47	2.51	2.52	2.48	2.49	2.48
25 - 29	2.82	2.85	2.89	2.88	2.84	2.85	2.87
30 - 39	2.98	2.98	2.96	2.96	2.95	2.96	2.97
40 - 49	3.10	3.14	3.16	3.13	3.02	3.10	3.05
50 and >	3.15	3.20	3.20	3.22	3.15	3.19	3.09
Unreported	2.43	2.67	2.86	2.81	4.00	2.62	2.81
<b>Average</b>	<b>2.60</b>	<b>2.62</b>	<b>2.66</b>	<b>2.67</b>	<b>2.64</b>	<b>2.64</b>	<b>2.67</b>

Source: SDCCD Information System

## Mesa College Section III: Student Outcomes (Annual Awards Conferred)

**Annual Awards Conferred:** On average, 76% of the total awards conferred at Mesa College were associate degrees. The number of certificates requiring 30 to 59 units showed the only increase over the five-year period (17%), from 173 in 2005/06 to 202 in 2009/10. In contrast, the certificates requiring 29 or fewer units decreased 20%, from 137 in 2005/06 to 109 in 2009/10, and the number of certificates requiring 60 or more units decreased 44%, from 16 in 2005/06 to 9 in 2009/10. The number of associate degrees conferred at Mesa College, on average, was 10% higher than the number of associate degrees conferred within all colleges in the district.

Figure 3.13. Mesa College Overall Annual Awards Conferred

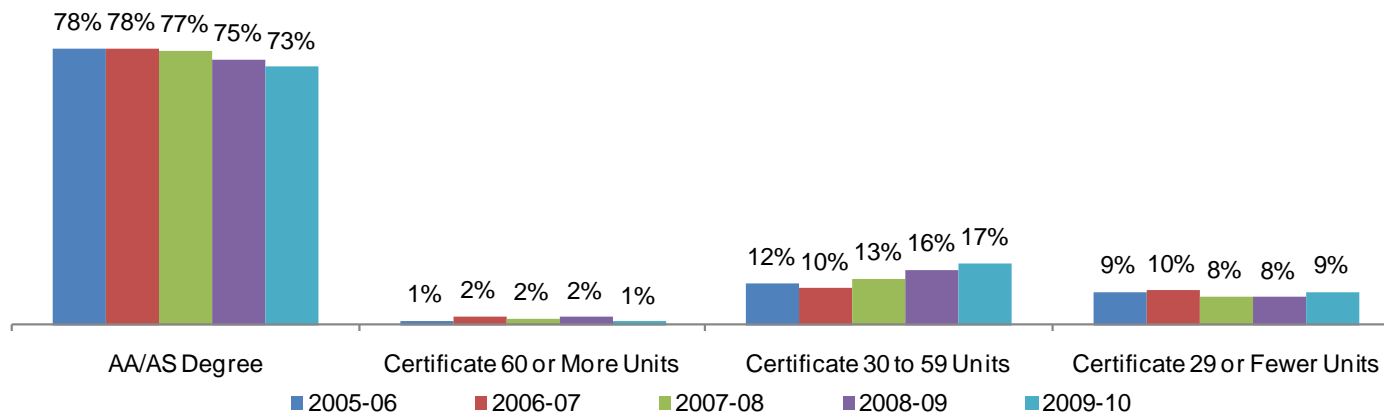


Table 3.13. Mesa College Overall Annual Awards Conferred

	2005-06		2006-07		2007-08		2008-09		2009-10		% Change 05/06-09/10	College Average 05/06-09/10	All Colleges Average 05/06-09/10
AA/AS Degree	1,147	78%	1,058	78%	1,005	77%	917	75%	849	73%	-26%	76%	66%
Certificate 60 or More Units	16	1%	31	2%	22	2%	24	2%	9	1%	-44%	2%	1%
Certificate 30 to 59 Units	173	12%	139	10%	168	13%	191	16%	202	17%	17%	13%	15%
Certificate 29 or Fewer Units	137	9%	130	10%	106	8%	94	8%	109	9%	-20%	9%	18%
<b>Total</b>	<b>1,473</b>	<b>100%</b>	<b>1,358</b>	<b>100%</b>	<b>1,301</b>	<b>100%</b>	<b>1,226</b>	<b>100%</b>	<b>1,169</b>	<b>100%</b>	<b>-21%</b>	<b>100%</b>	<b>100%</b>

Source: SDCCD Information System

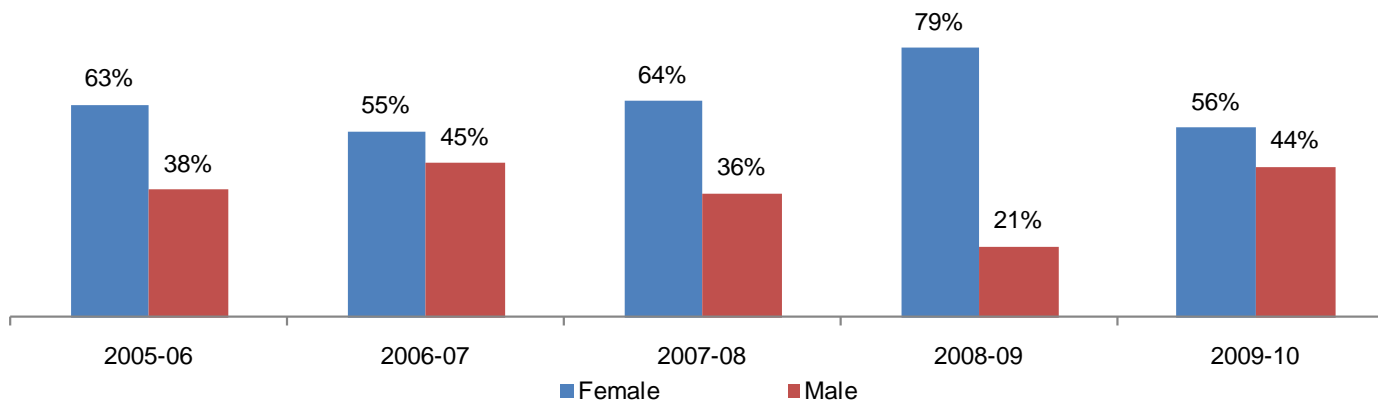
## Mesa College Section III: Student Outcomes (Annual Awards Conferred)

**Annual Awards Conferred by Gender:** Of the total awards conferred at Mesa College, female students (58%) received more associate degrees, on average, than their male student counterpart (42%) between 2005/06 and 2009/10. For certificates requiring 30 to 59 units, both male and female students showed an increased trend of 5% and 24%, respectively, between 2005/06 and 2009/10. This was in contrast to all the other types of awards conferred, which displayed a decreasing trend between 2005/06 and 2009/10. From 2005/06 to 2009/10, male students consistently earned a disproportionately low number of awards at Mesa College compared to the male student population of all colleges in the district. Females exhibited the opposite pattern.

Figure 3.14.1. Mesa College Annual AA/AS Degrees by Gender



Figure 3.14.2. Mesa College Annual Certificates 60 or More Units by Gender



## Mesa College Section III: Student Outcomes (Annual Awards Conferred)

Figure 3.14.3. Mesa College Annual Certificates 30 to 59 Units by Gender

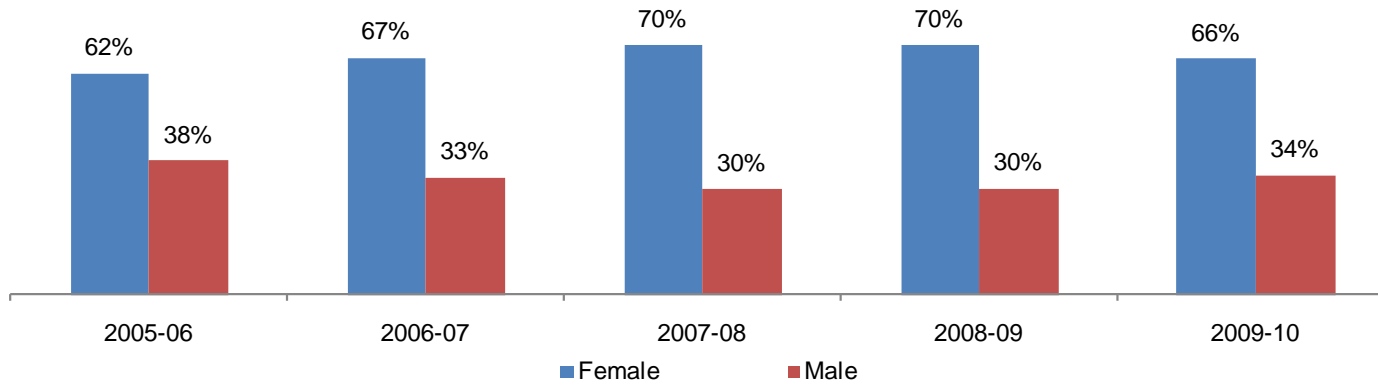
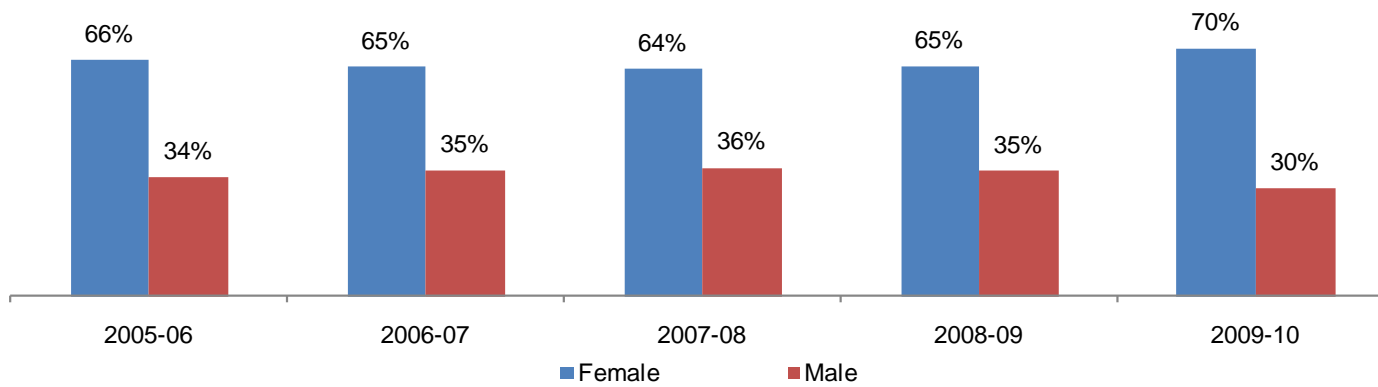


Figure 3.14.4. Mesa College Annual Certificates 29 or Fewer Units by Gender



## Mesa College Section III: Student Outcomes (Annual Awards Conferred)

Table 3.14. Mesa College Annual Awards Conferred by Gender

		2005-06		2006-07		2007-08		2008-09		2009-10		% Change 05/06-09/10	College Average 05/06-09/10	All Colleges Average 05/06-09/10
AA/AS Degree	Female	647	56%	617	58%	570	57%	540	59%	511	60%	-21%	58%	57%
	Male	500	44%	441	42%	435	43%	377	41%	338	40%	-32%	42%	43%
	<b>Total</b>	<b>1,147</b>	<b>100%</b>	<b>1,058</b>	<b>100%</b>	<b>1,005</b>	<b>100%</b>	<b>917</b>	<b>100%</b>	<b>849</b>	<b>100%</b>	<b>-26%</b>	<b>100%</b>	<b>100%</b>
Certificate 60 or More Units	Female	10	63%	17	55%	14	64%	19	79%	5	56%	-50%	64%	63%
	Male	6	38%	14	45%	8	36%	5	21%	4	44%	-33%	36%	38%
	<b>Total</b>	<b>16</b>	<b>100%</b>	<b>31</b>	<b>100%</b>	<b>22</b>	<b>100%</b>	<b>24</b>	<b>100%</b>	<b>9</b>	<b>100%</b>	<b>-44%</b>	<b>100%</b>	<b>100%</b>
Certificate 30 to 59 units	Female	108	62%	93	67%	118	70%	134	70%	134	66%	24%	67%	52%
	Male	65	38%	46	33%	50	30%	57	30%	68	34%	5%	33%	48%
	<b>Total</b>	<b>173</b>	<b>100%</b>	<b>139</b>	<b>100%</b>	<b>168</b>	<b>100%</b>	<b>191</b>	<b>100%</b>	<b>202</b>	<b>100%</b>	<b>17%</b>	<b>100%</b>	<b>100%</b>
Certificate 29 or Fewer Units	Female	91	66%	84	65%	68	64%	61	65%	76	70%	-16%	66%	41%
	Male	46	34%	46	35%	38	36%	33	35%	33	30%	-28%	34%	59%
	<b>Total</b>	<b>137</b>	<b>100%</b>	<b>130</b>	<b>100%</b>	<b>106</b>	<b>100%</b>	<b>94</b>	<b>100%</b>	<b>109</b>	<b>100%</b>	<b>-20%</b>	<b>100%</b>	<b>100%</b>
<b>Grand Total</b>		<b>1,473</b>	<b>100%</b>	<b>1,358</b>	<b>100%</b>	<b>1,301</b>	<b>100%</b>	<b>1,226</b>	<b>100%</b>	<b>1,169</b>	<b>100%</b>	<b>-21%</b>	<b>100%</b>	<b>100%</b>

Source: SDCCD Information System

## Mesa College Section III: Student Outcomes (Annual Awards Conferred)

**Annual Awards Conferred by Ethnicity:** With the exception of American Indian students, the number of associate degrees conferred at Mesa College decreased for all other ethnicities between 2005/06 and 2009/10. From 2005/06 and 2009/10, White students received the most awards, followed by Latino students, and Asian/Pacific Islanders students across all award categories. These trends reflect the fact that these three ethnicities (White, Latino, & Asian/Pacific Islanders students) constitute the greatest proportions of the student headcount population at Mesa College. Latino students at Mesa College were consistently underrepresented across most of the types of awards conferred when compared to the same ethnic student population of all colleges in the district, while Asian/Pacific Islanders were overrepresented when compared to the same ethnic student population of all colleges in the district.

Figure 3.15.1. Mesa College Annual AA/AS Degrees by Ethnicity

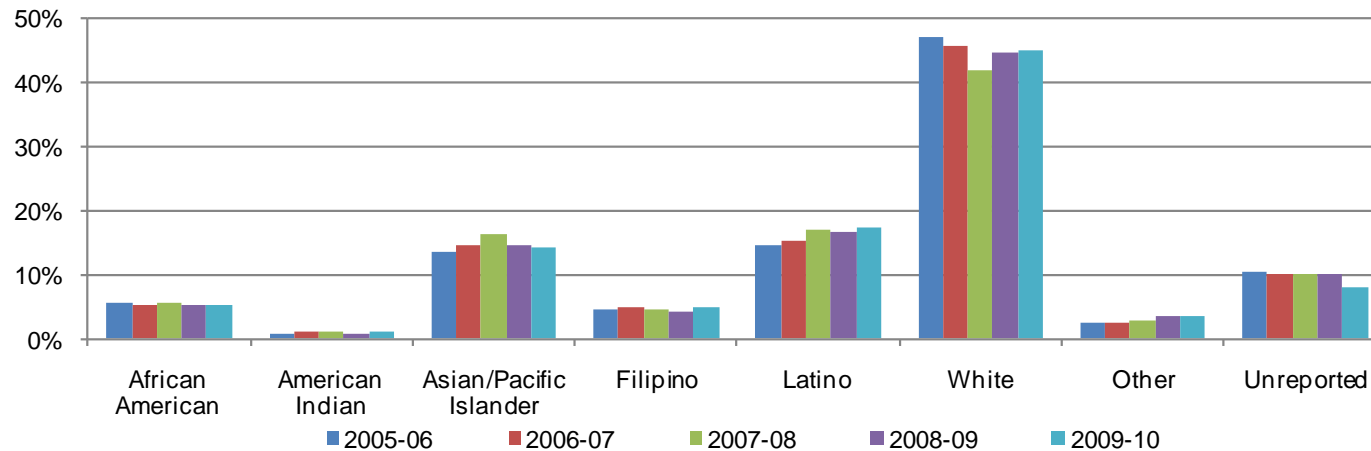
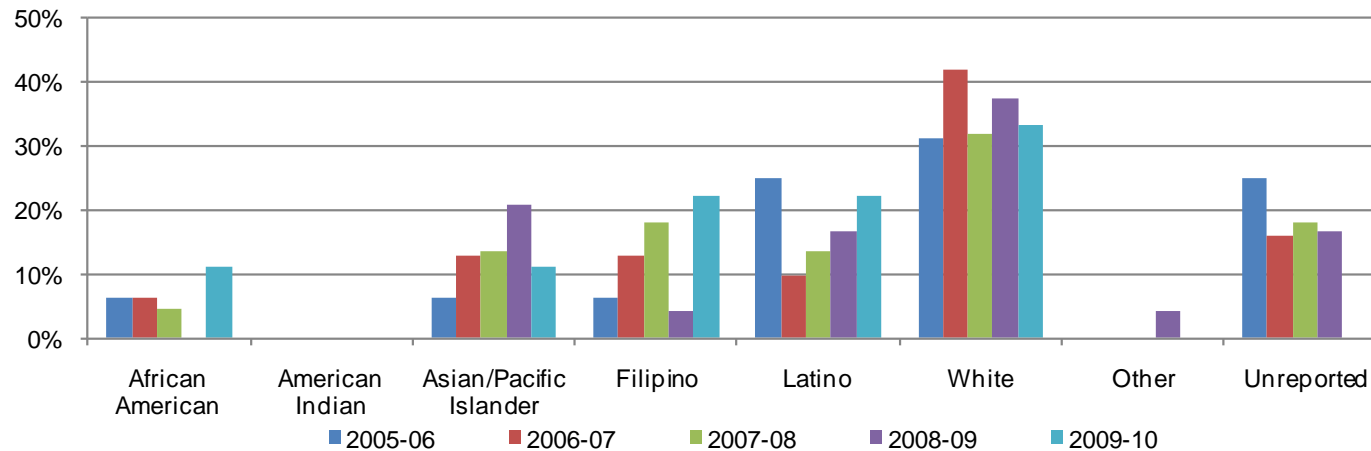


Figure 3.15.2. Mesa College Annual Certificates 60 or More Units by Ethnicity





## Mesa College Section III: Student Outcomes (Annual Awards Conferred)

Figure 3.15.3. Mesa College Annual Certificates 30 to 59 Units by Ethnicity

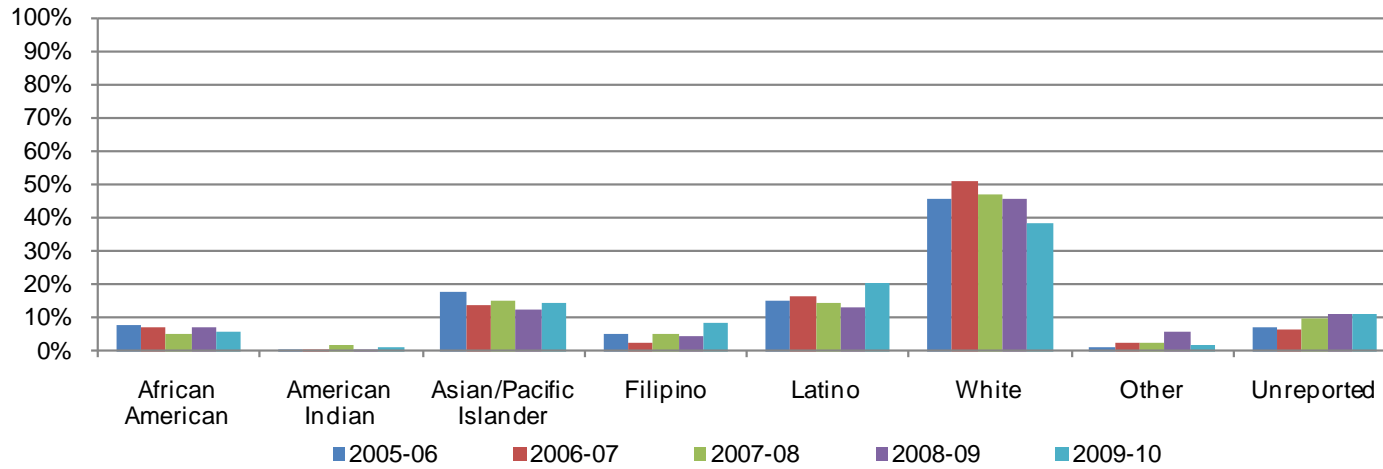
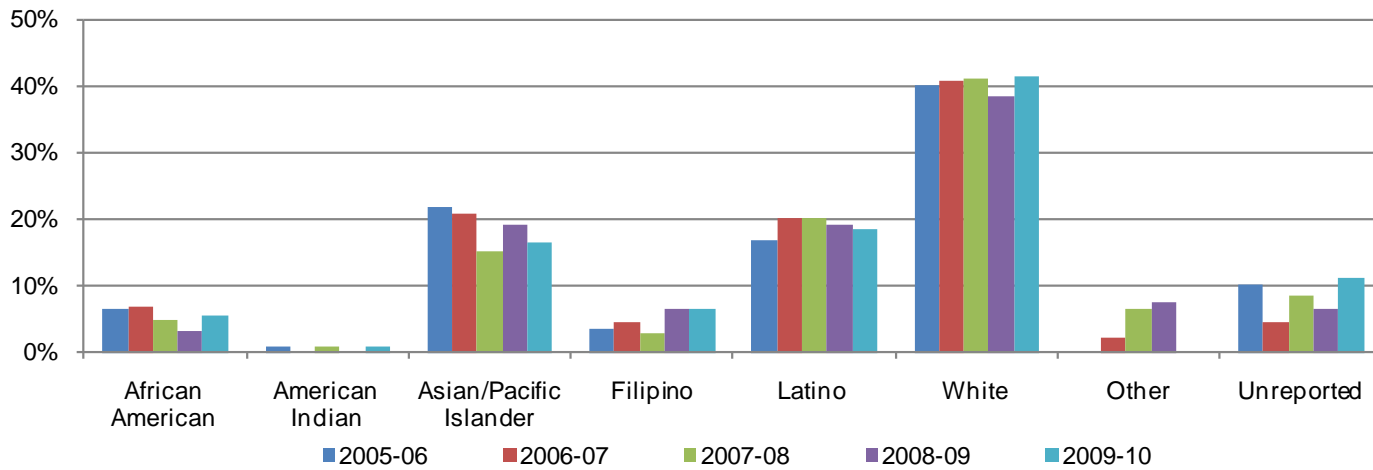


Figure 3.15.4. Mesa College Annual Certificates 29 or Fewer Units by Ethnicity



## Mesa College Section III: Student Outcomes (Annual Awards Conferred)

Table 3.15. Mesa College Annual Awards Conferred by Ethnicity

		2005-06		2006-07		2007-08		2008-09		2009-10		% Change 05/06-09/10	College Average 05/06-09/10	All Colleges Average 05/06-09/10
AA/AS Degree	African American	65	6%	56	5%	56	6%	50	5%	46	5%	-29%	5%	8%
	American Indian	9	1%	11	1%	10	1%	6	1%	10	1%	11%	1%	1%
	Asian/Pacific Islander	158	14%	156	15%	165	16%	133	15%	122	14%	-23%	15%	13%
	Filipino	51	4%	54	5%	47	5%	38	4%	42	5%	-18%	5%	7%
	Latino	170	15%	162	15%	173	17%	153	17%	147	17%	-14%	16%	19%
	White	542	47%	485	46%	421	42%	412	45%	383	45%	-29%	45%	40%
	Other	30	3%	27	3%	30	3%	32	3%	30	4%	0%	3%	4%
	Unreported	122	11%	107	10%	103	10%	93	10%	69	8%	-43%	10%	9%
	<b>Total</b>	<b>1,147</b>	<b>100%</b>	<b>1,058</b>	<b>100%</b>	<b>1,005</b>	<b>100%</b>	<b>917</b>	<b>100%</b>	<b>849</b>	<b>100%</b>	<b>-26%</b>	<b>100%</b>	<b>100%</b>
Certificate 60 or More Units	African American	1	6%	2	6%	1	5%	0	0%	1	11%	0%	5%	5%
	American Indian	0	0%	0	0%	0	0%	0	0%	0	0%	--	0%	0%
	Asian/Pacific Islander	1	6%	4	13%	3	14%	5	21%	1	11%	0%	14%	13%
	Filipino	1	6%	4	13%	4	18%	1	4%	2	22%	100%	12%	13%
	Latino	4	25%	3	10%	3	14%	4	17%	2	22%	-50%	16%	15%
	White	5	31%	13	42%	7	32%	9	38%	3	33%	-40%	36%	36%
	Other	0	0%	0	0%	0	0%	1	4%	0	0%		1%	1%
	Unreported	4	25%	5	16%	4	18%	4	17%	0	0%	-100%	17%	17%
	<b>Total</b>	<b>16</b>	<b>100%</b>	<b>31</b>	<b>100%</b>	<b>22</b>	<b>100%</b>	<b>24</b>	<b>100%</b>	<b>9</b>	<b>100%</b>	<b>-44%</b>	<b>100%</b>	<b>100%</b>

Source: SDCCD Information System

## Mesa College Section III: Student Outcomes (Annual Awards Conferred)

Table 3.15. Mesa College Annual Awards Conferred by Ethnicity (Continued)

		2005-06		2006-07		2007-08		2008-09		2009-10		% Change 05/06-09/10	College Average 05/06-09/10	All Colleges Average 05/06-09/10
Certificate 30 to 59 Units	African American	13	8%	10	7%	8	5%	14	7%	11	5%	-15%	6%	8%
	American Indian	1	1%	1	1%	3	2%	1	1%	2	1%	100%	1%	1%
	Asian/Pacific Islander	31	18%	19	14%	25	15%	24	13%	29	14%	-6%	15%	12%
	Filipino	9	5%	3	2%	9	5%	8	4%	17	8%	89%	5%	5%
	Latino	26	15%	23	17%	24	14%	25	13%	41	20%	58%	16%	18%
	White	79	46%	71	51%	79	47%	87	46%	77	38%	-3%	45%	44%
	Other	2	1%	3	2%	4	2%	11	6%	3	1%	50%	3%	3%
	Unreported	12	7%	9	6%	16	10%	21	11%	22	11%	83%	9%	9%
	<b>Total</b>	<b>173</b>	<b>100%</b>	<b>139</b>	<b>100%</b>	<b>168</b>	<b>100%</b>	<b>191</b>	<b>100%</b>	<b>202</b>	<b>100%</b>	<b>17%</b>	<b>100%</b>	<b>100%</b>
Certificate 29 or Fewer Units	African American	9	7%	9	7%	5	5%	3	3%	6	6%	-33%	6%	7%
	American Indian	1	1%	0	0%	1	1%	0	0%	1	1%	0%	1%	1%
	Asian/Pacific Islander	30	22%	27	21%	16	15%	18	19%	18	17%	-40%	19%	12%
	Filipino	5	4%	6	5%	3	3%	6	6%	7	6%	40%	5%	4%
	Latino	23	17%	26	20%	21	20%	18	19%	20	18%	-13%	19%	24%
	White	55	40%	53	41%	44	41%	36	38%	45	41%	-18%	40%	41%
	Other	0	0%	3	2%	7	7%	7	7%	0	0%	--	3%	3%
	Unreported	14	10%	6	5%	9	9%	6	6%	12	11%	-14%	8%	7%
	<b>Total</b>	<b>137</b>	<b>100%</b>	<b>130</b>	<b>100%</b>	<b>106</b>	<b>100%</b>	<b>94</b>	<b>100%</b>	<b>109</b>	<b>100%</b>	<b>-20%</b>	<b>100%</b>	<b>100%</b>
<b>Grand Total</b>	<b>1,473</b>	<b>100%</b>	<b>1,358</b>	<b>100%</b>	<b>1,301</b>	<b>100%</b>	<b>1,226</b>	<b>100%</b>	<b>1,169</b>	<b>100%</b>	<b>-21%</b>	<b>100%</b>	<b>100%</b>	

Source: SDCCD Information System

## Mesa College Section III: Student Outcomes (Annual Awards Conferred)

**Annual Awards Conferred by Age:** Approximately three-quarters (71%) of the total number of associate degrees awarded and half of the certificates requiring 30 to 59 units awarded between 2005/06 and 2009/10 were to students between ages 18-29 years old. Students between ages 25 and 29 years old consistently displayed a trend of receiving approximately one-quarter of the awards within each award category. Students between ages 18-24 years old were overrepresented in the number of associate degree awards received at Mesa College when compared the same age group of all colleges in the district. However, students ages 30-49 showed the greatest disparity in the number of associate degree awards received at Mesa College when compared the same age group of all colleges in the district between 2005/06 and 2009/10.

Figure 3.16.1. Mesa College Annual AA/AS Degrees by Age

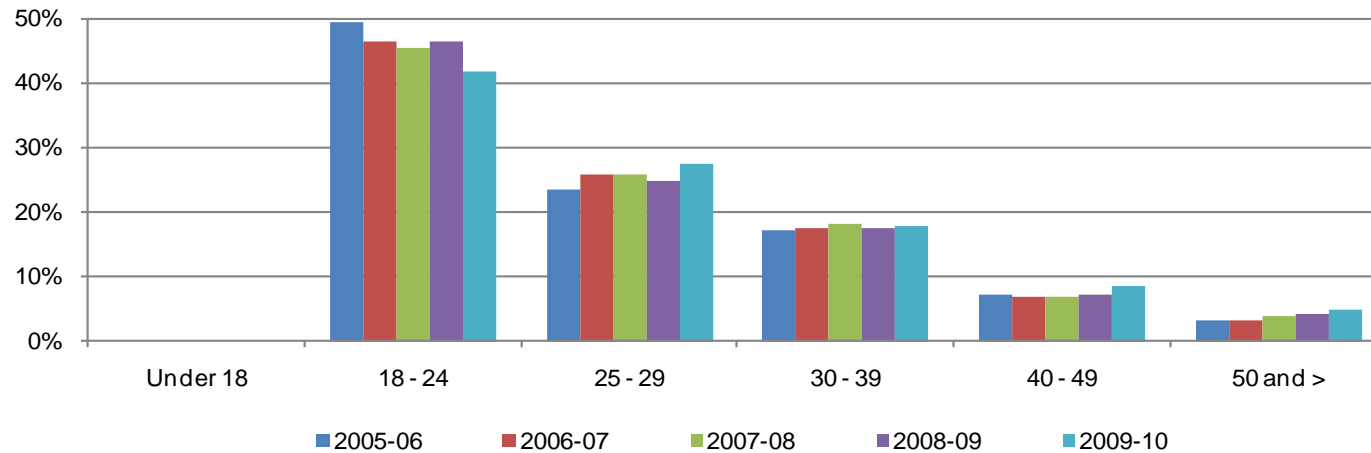
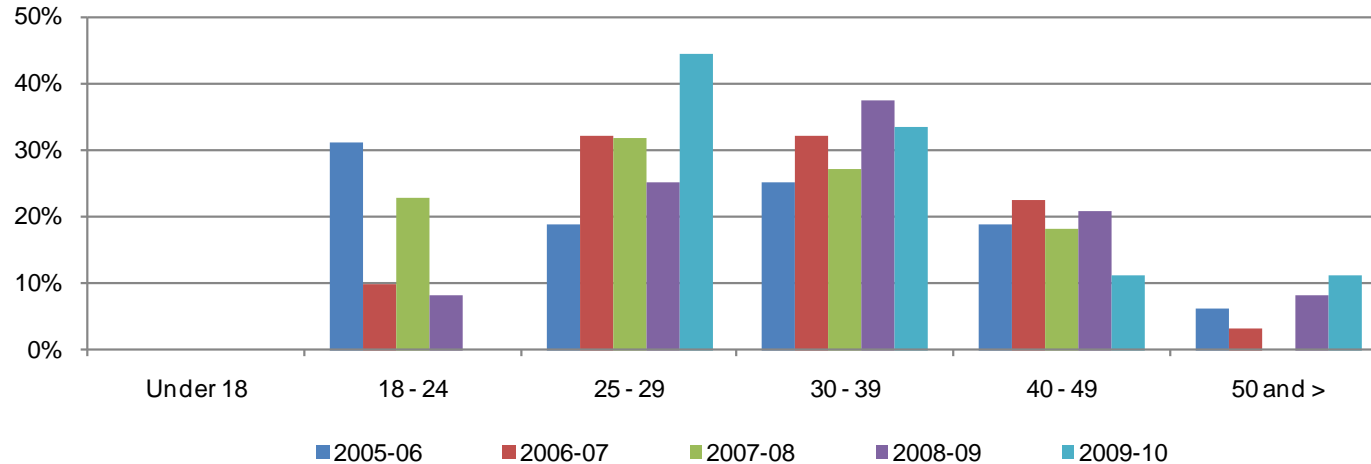


Figure 3.16.2. Mesa College Annual Certificates 60 or More Units by Age



## Mesa College Section III: Student Outcomes (Annual Awards Conferred)

Figure 3.16.3. Mesa College Annual Certificates 30 to 59 Units by Age

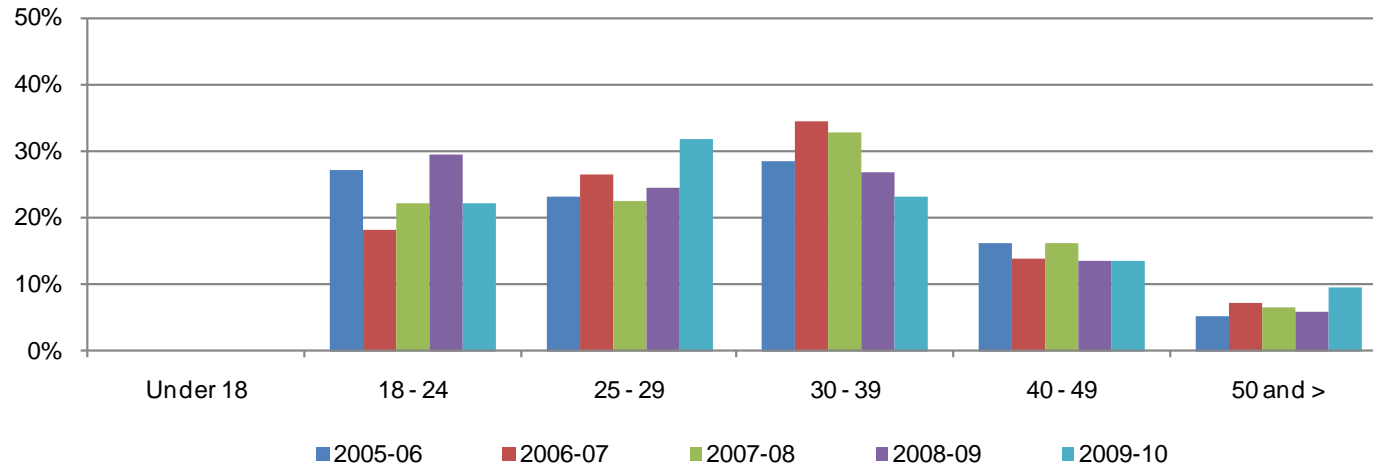
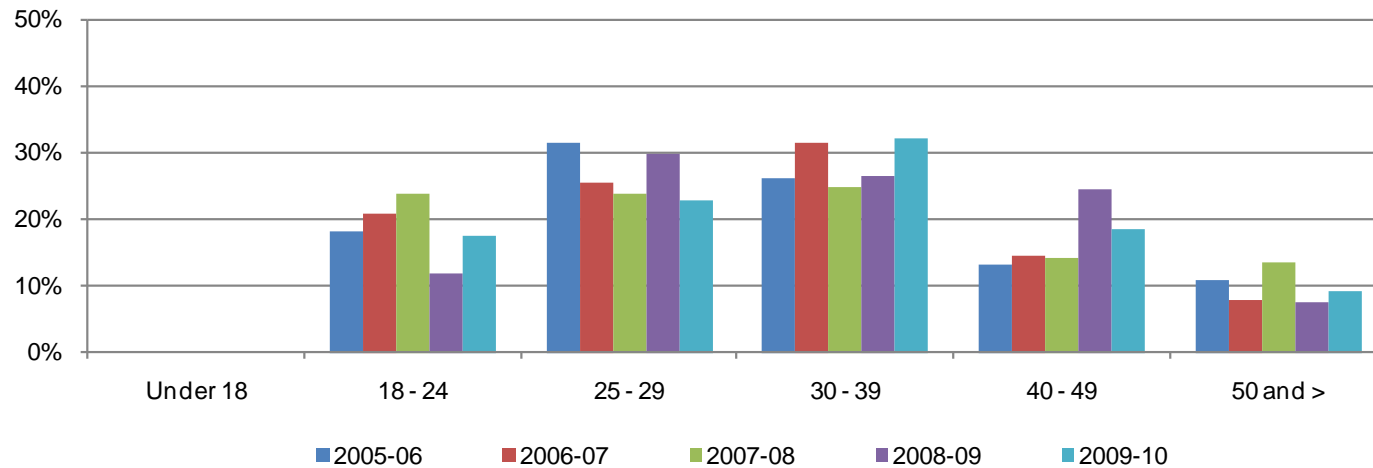


Figure 3.16.4. Mesa College Annual Certificates 29 or Fewer Units by Age



## Mesa College Section III: Student Outcomes (Annual Awards Conferred)

Table 3.16. Mesa College Annual Awards Conferred by Age

		2005-06		2006-07		2007-08		2008-09		2009-10		% Change 05/06-09/10	College Average 05/06-09/10	All Colleges Average 05/06-09/10
AA/AS Degree	Under 18	0	0%	0	0%	0	0%	0	0%	0	0%	--	0%	0%
	18 - 24	565	49%	491	46%	457	45%	425	46%	354	42%	-37%	46%	39%
	25 - 29	268	23%	274	26%	258	26%	228	25%	232	27%	-13%	25%	26%
	30 - 39	197	17%	186	18%	182	18%	160	17%	150	18%	-24%	18%	21%
	40 - 49	82	7%	73	7%	69	7%	67	7%	71	8%	-13%	7%	10%
	50 and >	35	3%	34	3%	39	4%	37	4%	42	5%	20%	4%	5%
	<b>Total</b>	<b>1,147</b>	<b>100%</b>	<b>1,058</b>	<b>100%</b>	<b>1,005</b>	<b>100%</b>	<b>917</b>	<b>100%</b>	<b>849</b>	<b>100%</b>	<b>-26%</b>	<b>100%</b>	<b>100%</b>
Certificate 60 or More Units	Under 18	0	0%	0	0%	0	0%	0	0%	0	0%	--	0%	0%
	18 - 24	5	31%	3	10%	5	23%	2	8%	0	0%	-100%	15%	14%
	25 - 29	3	19%	10	32%	7	32%	6	25%	4	44%	33%	29%	30%
	30 - 39	4	25%	10	32%	6	27%	9	38%	3	33%	-25%	31%	31%
	40 - 49	3	19%	7	23%	4	18%	5	21%	1	11%	-67%	20%	20%
	50 and >	1	6%	1	3%	0	0%	2	8%	1	11%	0%	5%	5%
	<b>Total</b>	<b>16</b>	<b>100%</b>	<b>31</b>	<b>100%</b>	<b>22</b>	<b>100%</b>	<b>24</b>	<b>100%</b>	<b>9</b>	<b>100%</b>	<b>-44%</b>	<b>100%</b>	<b>100%</b>
Certificate 30 to 59 Units	Under 18	0	0%	0	0%	0	0%	0	0%	0	0%	--	0%	0%
	18 - 24	47	27%	25	18%	37	22%	56	29%	45	22%	-4%	24%	22%
	25 - 29	40	23%	37	27%	38	23%	47	25%	64	32%	60%	26%	23%
	30 - 39	49	28%	48	35%	55	33%	51	27%	47	23%	-4%	29%	26%
	40 - 49	28	16%	19	14%	27	16%	26	14%	27	13%	-4%	15%	18%
	50 and >	9	5%	10	7%	11	7%	11	6%	19	9%	111%	7%	11%
	<b>Total</b>	<b>173</b>	<b>100%</b>	<b>139</b>	<b>100%</b>	<b>168</b>	<b>100%</b>	<b>191</b>	<b>100%</b>	<b>202</b>	<b>100%</b>	<b>17%</b>	<b>100%</b>	<b>100%</b>
Certificate 29 or Fewer Units	Under 18	0	0%	0	0%	0	0%	0	0%	0	0%	--	0%	0%
	18 - 24	25	18%	27	21%	25	24%	11	12%	19	17%	-24%	19%	22%
	25 - 29	43	31%	33	25%	25	24%	28	30%	25	23%	-42%	27%	25%
	30 - 39	36	26%	41	32%	26	25%	25	27%	35	32%	-3%	28%	28%
	40 - 49	18	13%	19	15%	16	14%	23	24%	20	18%	11%	17%	16%
	50 and >	15	11%	10	8%	14	13%	7	7%	10	9%	-33%	10%	9%
	<b>Total</b>	<b>137</b>	<b>100%</b>	<b>130</b>	<b>100%</b>	<b>106</b>	<b>100%</b>	<b>94</b>	<b>100%</b>	<b>109</b>	<b>100%</b>	<b>-20%</b>	<b>100%</b>	<b>100%</b>
<b>Grand Total</b>	<b>1,473</b>	<b>100%</b>	<b>1,358</b>	<b>100%</b>	<b>1,301</b>	<b>100%</b>	<b>1,226</b>	<b>100%</b>	<b>1,169</b>	<b>100%</b>	<b>-21%</b>	<b>100%</b>	<b>100%</b>	

Source: SDCCD Information System

## Mesa College Section III: Student Outcomes (Annual Transfer Volume)

**Annual Transfer Volume:** The annual transfer volume for Mesa College increased 39%, from 1,144 in 2005/06 to 1,592 in 2009/10.

Figure 3.17. Mesa College Overall Annual Transfers

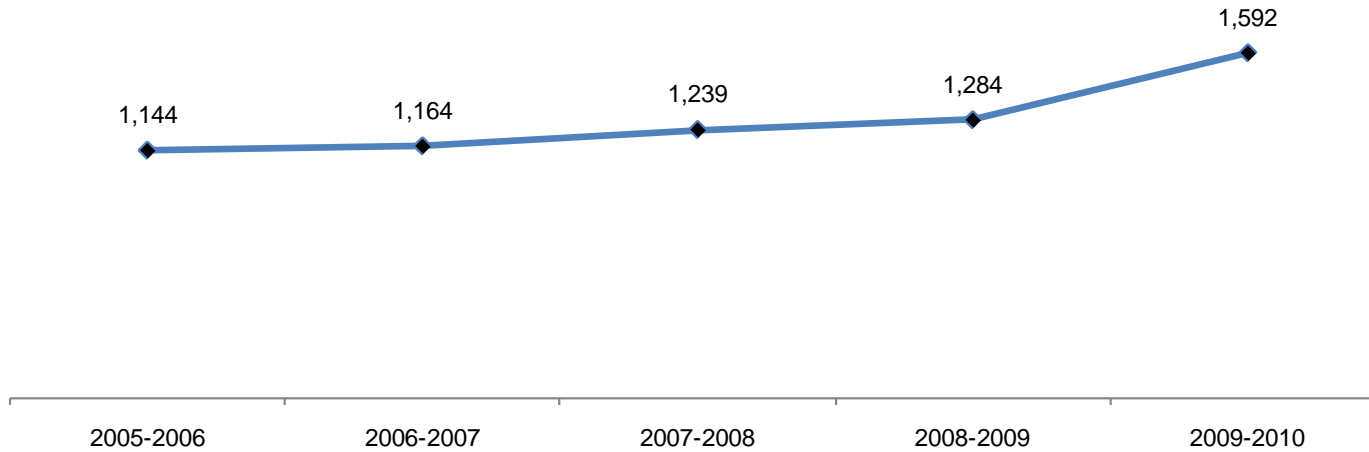


Table 3.17. Mesa College Overall Annual Transfers

	2005-2006	2006-2007	2007-2008	2008-2009	2009-2010	% Change 05/06-09/10
<b>Total</b>	1,144	1,164	1,239	1,284	1,592	39%

Source: SDCCD Information System

## Mesa College Section III: Student Outcomes (Annual Transfer Volume)

**Annual Transfer Volume by Gender:** Between 2005/06 and 2009/10, female students (51%) had a higher transfer volume, on average, compared to their male student (49%) counterpart. The transfer volumes for both male and female students increased between 2005/06 and 2009/10 (32% & 47%, respectively).

Figure 3.18. Mesa College Annual Transfers by Gender

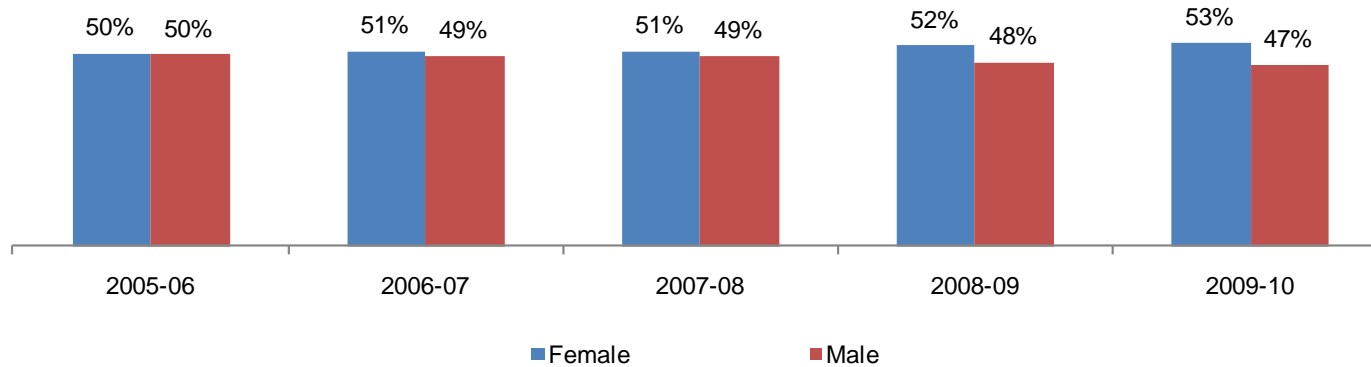


Table 3.18. Mesa College Annual Transfers by Gender

	2005-06		2006-07		2007-08		2008-09		2009-10		% Change 05/06-09/10	College Average 05/06-09/10	All Colleges Average 05/06-09/10
Female	574	50%	590	51%	628	51%	669	52%	842	53%	47%	51%	52%
Male	569	50%	574	49%	611	49%	614	48%	750	47%	32%	49%	48%
Unreported	1	0%	0	0%	0	0%	1	0%	0	0%	-100%	0%	0%
<b>Total</b>	<b>1,144</b>	<b>100%</b>	<b>1,164</b>	<b>100%</b>	<b>1,239</b>	<b>100%</b>	<b>1,284</b>	<b>100%</b>	<b>1,592</b>	<b>100%</b>	<b>39%</b>	<b>100%</b>	<b>100%</b>

Source: SDCCD Information System



## Mesa College Section III: Student Outcomes (Annual Transfer Volume)

**Annual Transfer Volume by Ethnicity:** Of all the students who transferred from Mesa College, more than half were White students (52%) on average. Ethnic groups with the second highest transfer volumes were Asian/Pacific Islanders students and Latino students (13% for both) between 2005/06 and 2009/10. African American students exhibited the most dramatic rise in transfer volume, increasing 240% between 2005/06 and 2009/10.

Figure 3.19. Mesa College Annual Transfers by Ethnicity

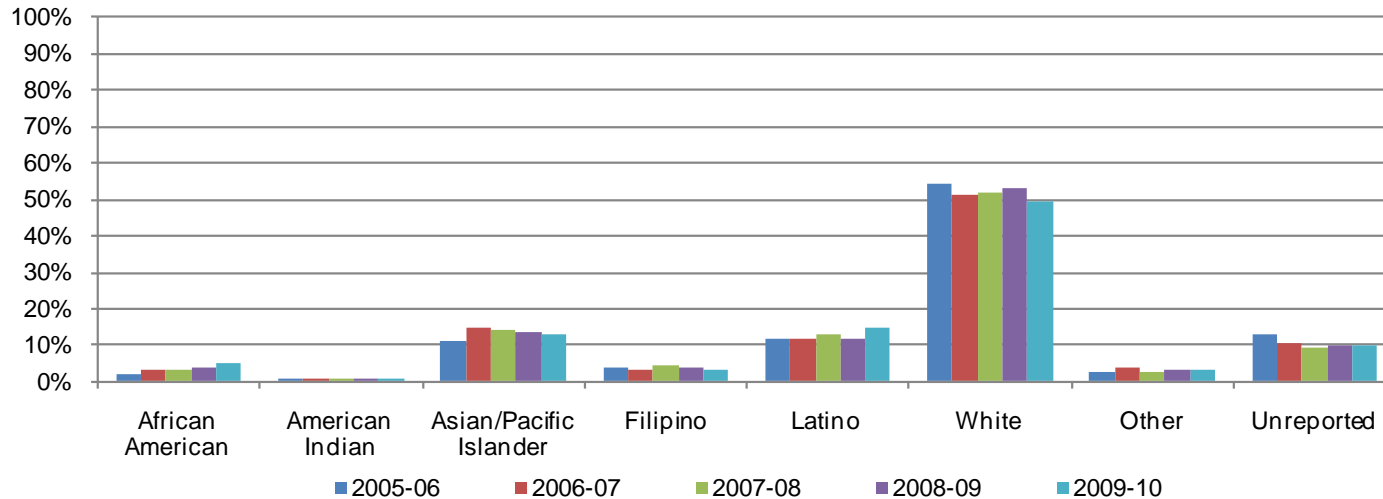


Table 3.19. Mesa College Annual Transfers by Ethnicity

	2005-06		2006-07		2007-08		2008-09		2009-10		% Change 05/06-09/10	College Average 05/06-09/10	All Colleges Average 05/06-09/10
African American	25	2%	40	3%	44	4%	49	4%	85	5%	240%	4%	5%
American Indian	11	1%	9	1%	14	1%	11	1%	13	1%	18%	1%	1%
Asian/Pacific Islander	129	11%	172	15%	174	14%	173	13%	211	13%	64%	13%	13%
Filipino	48	4%	40	3%	56	5%	51	4%	49	3%	2%	4%	5%
Latino	132	12%	139	12%	160	13%	151	12%	236	15%	79%	13%	15%
White	620	54%	595	51%	646	52%	678	53%	787	49%	27%	52%	48%
Other	33	3%	45	4%	30	2%	41	3%	52	3%	58%	3%	4%
Unreported	146	13%	124	11%	115	9%	130	10%	159	10%	9%	10%	10%
<b>Total</b>	<b>1,144</b>	<b>100%</b>	<b>1,164</b>	<b>100%</b>	<b>1,239</b>	<b>100%</b>	<b>1,284</b>	<b>100%</b>	<b>1,592</b>	<b>100%</b>	<b>39%</b>	<b>100%</b>	<b>100%</b>

Source: SDCCD Information System

## Mesa College Section III: Student Outcomes (Annual Transfer Volume)

**Annual Transfer Volume by Age:** The age groups with the highest transfer volume, on average, were students ages 18-24 (71%), students between ages 25 and 29 years old (21%), and students ages 30 to 39 years old (7%) between 2005/06 and 2009/10. Students who were 50 years and older displayed a 700% increase in transfer volume, from 1 in 2005/06 to 8 in 2009/10.

Figure 3.20. Mesa College Annual Transfers by Age

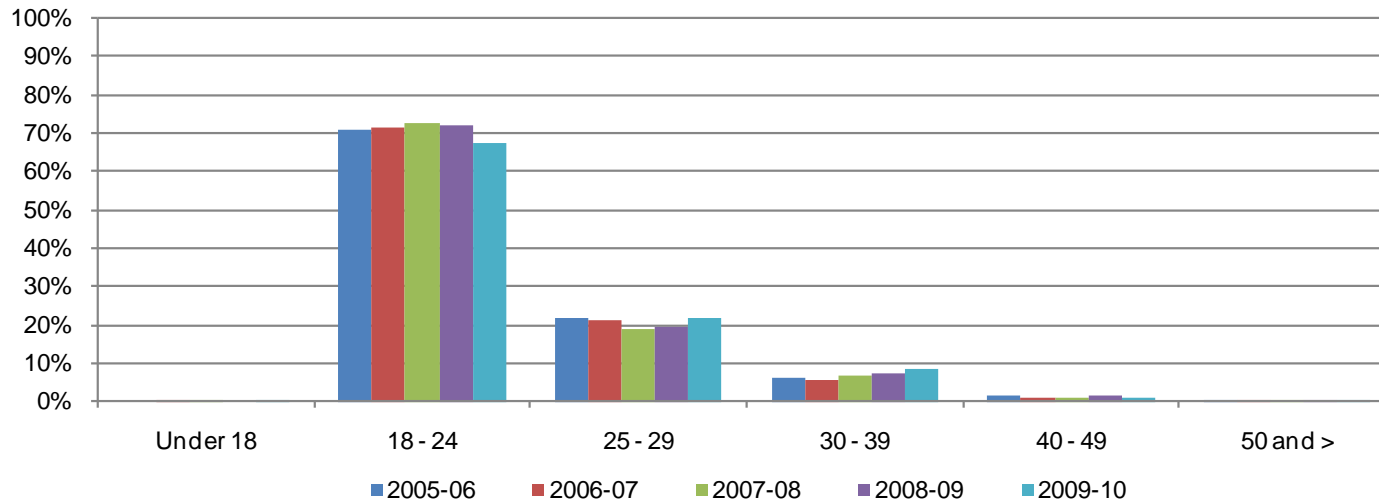


Table 3.20. Mesa College Annual Transfers by Age

	2005-06		2006-07		2007-08		2008-09		2009-10		% Change 05/06-09/10	College Average 05/06-09/10	All Colleges Average 05/06-09/10
Under 18	0	0%	1	0%	2	0%	0	0%	2	0%	100%	0%	0%
18 - 24	810	71%	829	71%	900	73%	922	72%	1,074	67%	33%	71%	64%
25 - 29	249	22%	250	21%	232	19%	247	19%	350	22%	41%	21%	24%
30 - 39	68	6%	67	6%	85	7%	94	7%	140	9%	106%	7%	9%
40 - 49	16	1%	14	1%	15	1%	17	1%	18	1%	13%	1%	2%
50 and >	1	0%	3	0%	5	0%	4	0%	8	1%	700%	0%	1%
Unreported	0	0%	0	0%	0	0%	0	0%	0	0%	0%	0%	0%
<b>Total</b>	<b>1,144</b>	<b>100%</b>	<b>1,164</b>	<b>100%</b>	<b>1,239</b>	<b>100%</b>	<b>1,284</b>	<b>100%</b>	<b>1,592</b>	<b>100%</b>	<b>39%</b>	<b>100%</b>	<b>100%</b>

Source: SDCCD Information System

## Mesa College Section III: Student Outcomes (Annual Transfer Volume)

**Annual Transfer Volume by CSU-UC/Private (In-State)/Out-of-State:** On average, nearly half of the Mesa College transfer volume comprised students who transferred into the California State University system (CSU) (48%), followed by the University of California system (UC) (23%), Out-of-State institutions (18%), and then In-State private institutions (12%). Transfer volume comprising students who transferred from Mesa College to any In-State private institution increased 187%, from 87 in 2005/06 to 250 in 2009/10.

Figure 3.21. Mesa College Annual Transfers by CSU-UC/Private (In-State)/Out-of-State

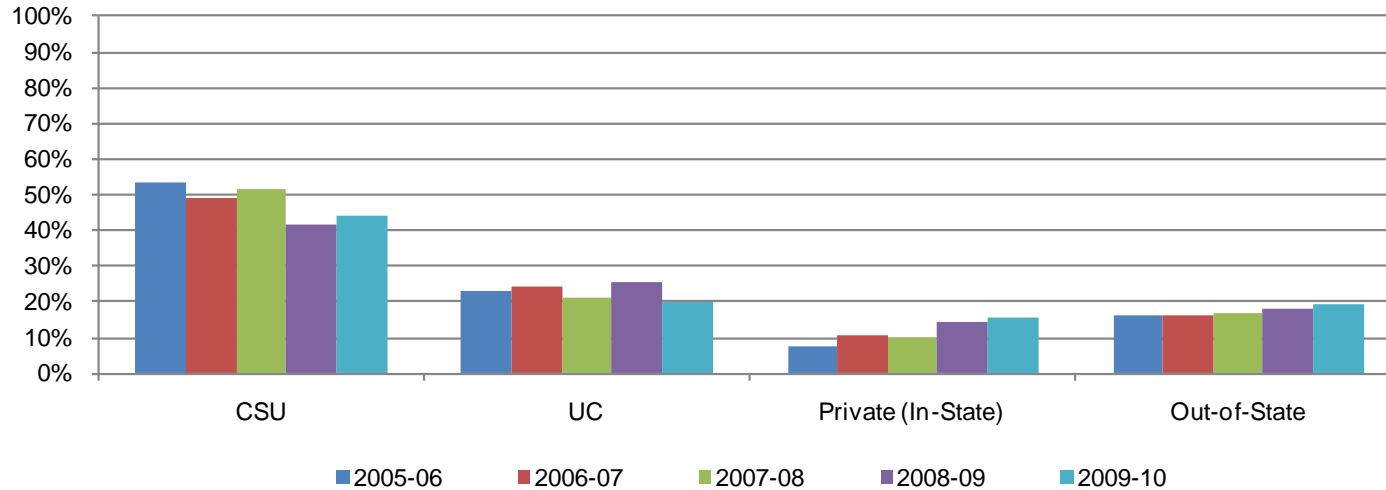


Table 3.21. Mesa College Annual Transfers by CSU-UC/Private (In-State)/Out-of-State

	2005-06		2006-07		2007-08		2008-09		2009-10		% Change 05/06-09/10	College Average 05/06-09/10	All Colleges Average 05/06-09/10
CSU	610	53%	571	49%	640	52%	537	42%	706	44%	16%	48%	47%
UC	261	23%	283	24%	265	21%	329	26%	323	20%	24%	23%	21%
Private (In-State)	87	8%	121	10%	126	10%	185	14%	250	16%	187%	12%	13%
Out-of-State	186	16%	189	16%	208	17%	233	18%	313	20%	68%	18%	19%
<b>Total</b>	<b>1,144</b>	<b>100%</b>	<b>1,164</b>	<b>100%</b>	<b>1,239</b>	<b>100%</b>	<b>1,284</b>	<b>100%</b>	<b>1,592</b>	<b>100%</b>	<b>39%</b>	<b>100%</b>	<b>100%</b>

Source: SDCCD Information System

Note: Out-of-State included both public and private 4-year institutions.

## Mesa College Section III: Student Outcomes (Annual Transfer Volume)

**Annual Transfer Volume by CSU/UC:** Of the total Mesa College transfer volume (see table 3.17), 71% transferred into either the California State University (CSU) or University of California (UC) systems on average (48% & 23%, respectively). Of the total number of students who transferred to CSU or UC systems, the majority of students went to CSU (68%) and about one-third went to UC (32%) on average. Both the CSU and UC systems showed an increase in the number of students who transferred from Mesa College (16% & 24%, respectively) between 2005/06 and 2009/10.

Figure 3.22. Mesa College Annual Transfers by CSU/UC

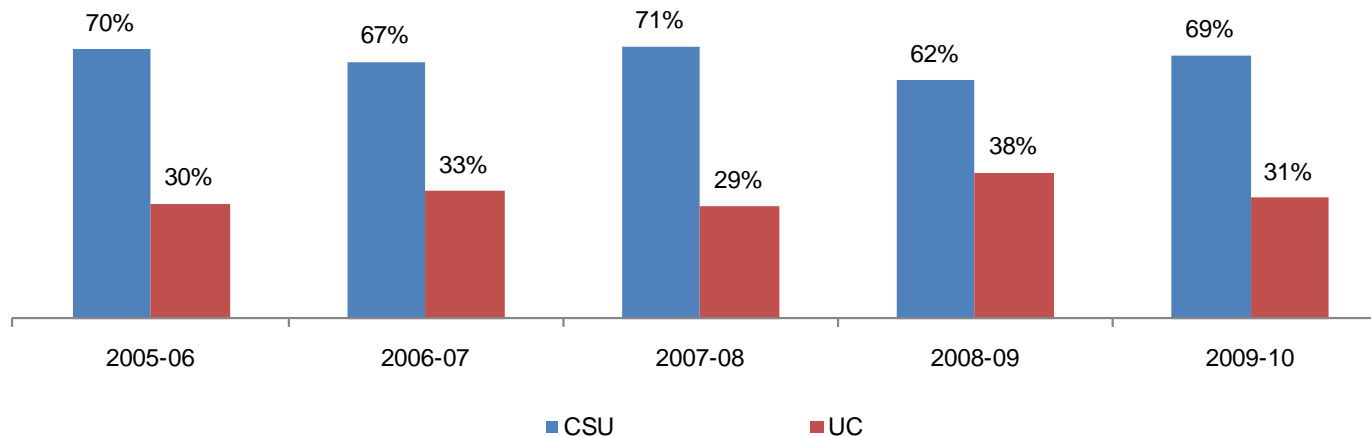


Table 3.22. Mesa College Annual Transfers by CSU/UC

	2005-06		2006-07		2007-08		2008-09		2009-10		% Change 05/06-09/10	College Average 05/06-09/10	All Colleges Average 05/06-09/10
CSU	610	70%	571	67%	640	71%	537	62%	706	69%	16%	68%	69%
UC	261	30%	283	33%	265	29%	329	38%	323	31%	24%	32%	31%
<b>Total</b>	<b>871</b>	<b>100%</b>	<b>854</b>	<b>100%</b>	<b>905</b>	<b>100%</b>	<b>866</b>	<b>100%</b>	<b>1,029</b>	<b>100%</b>	<b>18%</b>	<b>100%</b>	<b>100%</b>

Source: SDCCD Information System

## Mesa College Section III: Student Outcomes (Annual Transfer Volume)

**Annual Transfer Volume by Institution Type:** Of all the students who transferred from Mesa College, 20% transferred to a private institution and 80% transferred to a public institution on average. Both public and private institutions displayed an increased trend in the number of students who transferred from Mesa College (19% & 173%, respectively) between 2005/06 and 2009/10.

Figure 3.23. Mesa College Annual Transfers by Institution Type

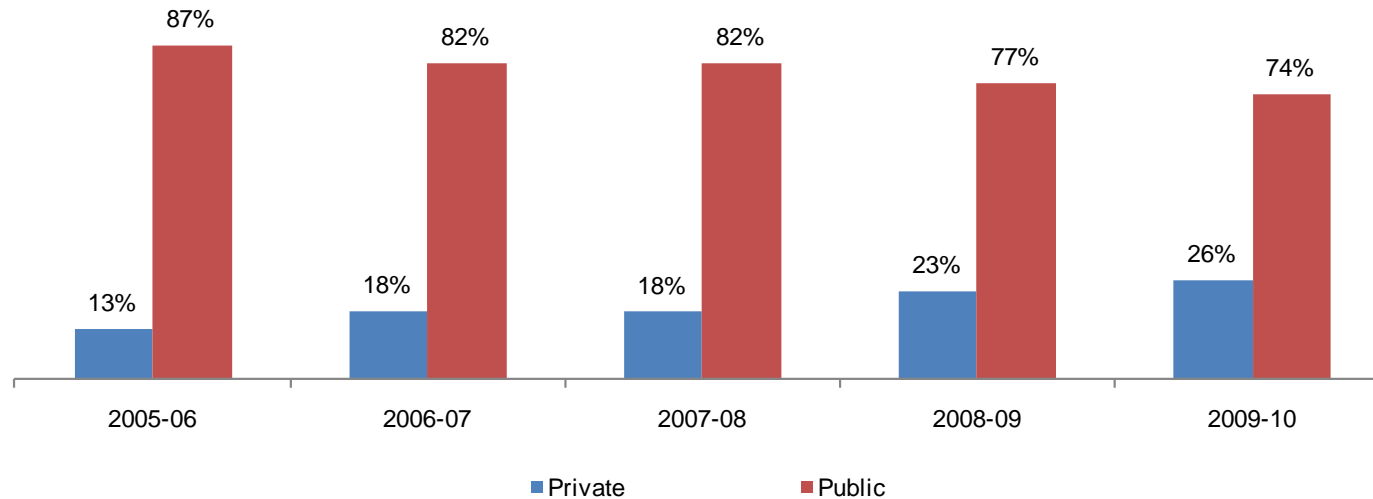


Table 3.23. Mesa College Annual Transfers by Institution Type

	2005-06		2006-07		2007-08		2008-09		2009-10		% Change 05/06-09/10	College Average 05/06-09/10	All Colleges Average 05/06-09/10
Private	151	13%	208	18%	219	18%	296	23%	412	26%	173%	20%	22%
Public	993	87%	956	82%	1,020	82%	988	77%	1,180	74%	19%	80%	78%
<b>Total</b>	<b>1,144</b>	<b>100%</b>	<b>1,164</b>	<b>100%</b>	<b>1,239</b>	<b>100%</b>	<b>1,284</b>	<b>100%</b>	<b>1,592</b>	<b>100%</b>	<b>39%</b>	<b>100%</b>	<b>100%</b>

Source: SDCCD Information System

Note: Public and Private included both Out-of-State and In-State 4-year institutions.

**Section IV**  
**Productivity and Efficiency**

## **Mesa College Section IV: Productivity and Efficiency**

---

This section of the Fact Book contains information on productivity and efficiency measures. The following describes in detail each of the measures:

- 1) FTES. The first measure reported in this section is a measure of productivity. FTES is a calculation of full-time equivalent students enrolled as of official census and is based on the total number of student contact hours. Starting in 2009-10 tutoring hours (course number 044) can only be claimed for Basic Skills classes at the credit colleges. However, Mesa College has decided not to claim any tutoring hours for their Basic Skills classes.
- 2) Enrollments. The second measure in this section of the report is also a measure of productivity. Enrollments are duplicated counts of students. The measure counts all of the classes in which a single student is enrolled compared to unduplicated headcount which counts the student only once regardless of the number of classes he/she may be enrolled in.
- 3) Fill Rates. The third measure reported in this section is a measure of efficiency. Fill rates are a calculation of the total enrollment capacity of a class over the total enrollments in the class.
- 4) Load. The fourth measure reported in this section is a measure of efficiency. Load is a calculation of the ratio of Weekly Student Contact Hours (WSCH) to Full-time Equivalent Faculty (WSCH/FTEF).

## Mesa College Section IV: Productivity and Efficiency (FTES)

**Annual FTES:** Between 2005/06 and 2009/10, total FTES showed an initial decline after the first year and then increased over the subsequent years. Between 2005/06 and 2009/10, total FTES increased by 4%. For credit FTES, there was a 4% increase, from 15,241 in 2005/06 to 15,898 in 2009/10. Mesa College did not claim any FTES for tutoring in 2009/10, thus, non-credit FTES was reported as 0 for this year.

Figure 4.1. Mesa College Resident & Non Resident Annual FTES

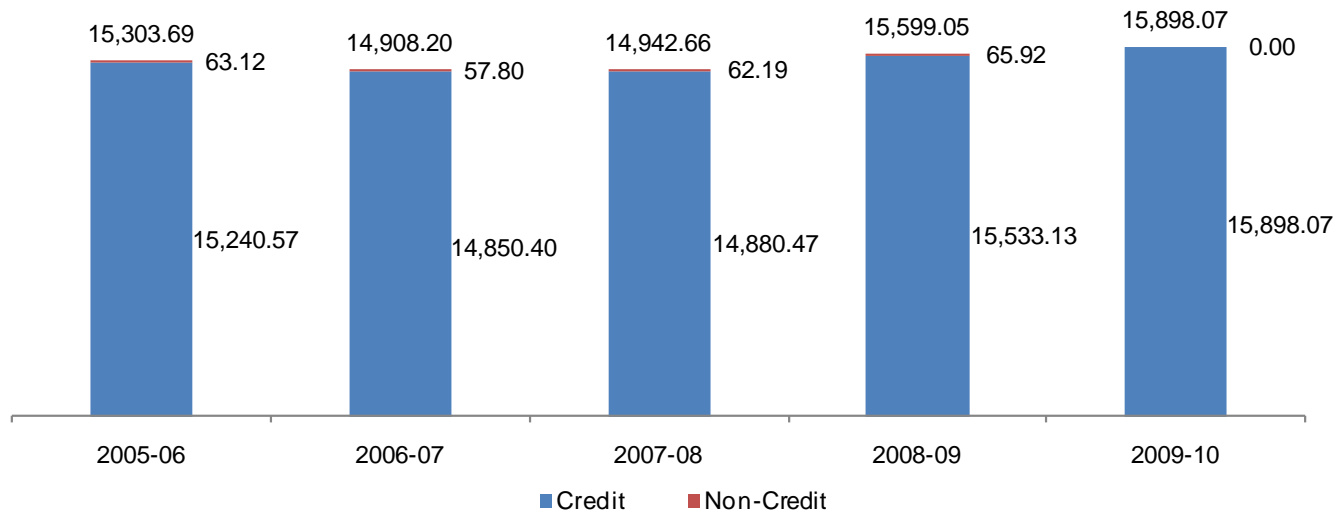


Table 4.1. Mesa College Resident & Non Resident Annual FTES

	2005-06	2006-07	2007-08	2008-09	2009-10
Credit	15,240.57	14,850.40	14,880.47	15,533.13	15,898.07
Non-Credit	63.12	57.80	62.19	65.92	0.00
<b>Total</b>	<b>15,303.69</b>	<b>14,908.20</b>	<b>14,942.66</b>	<b>15,599.05</b>	<b>15,898.07</b>

Source: SDCCD Information System



## Mesa College Section IV: Productivity and Efficiency (Enrollments)

**Enrollments:** The enrollment trend for the online mode of instruction increased for summer (164%), fall (143%), and spring (53%) terms between 2005/06 and 2009/10. The on campus mode of instruction enrollment decreased for the summer (9%) and fall terms (1%) and increased for the spring term (3%) from 2005/06 through 2009/10. The total enrollment trends for Mesa College were lower than the total enrollment trends for all colleges in the district across the summer (7% & 25%, respectively) and fall terms (6% & 8%, respectively); however, Mesa College showed a greater increase in spring enrollment (7%) than all colleges in the district (5%) between 2005/06 and 2009/10.

Figure 4.2.1. Mesa College Enrollments (Summer)

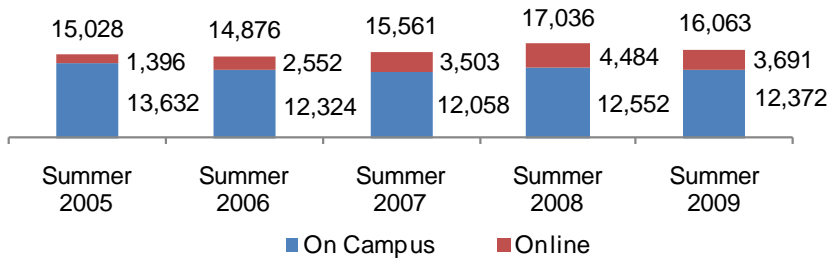


Figure 4.2.2. Mesa College Enrollments (Fall)

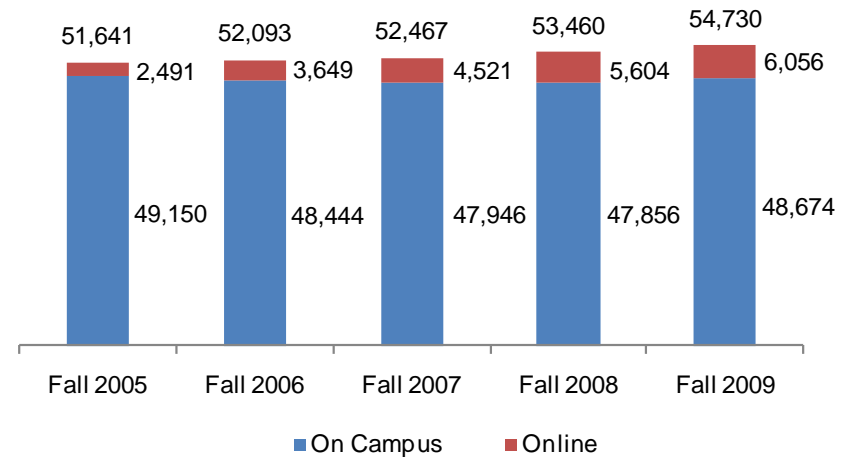
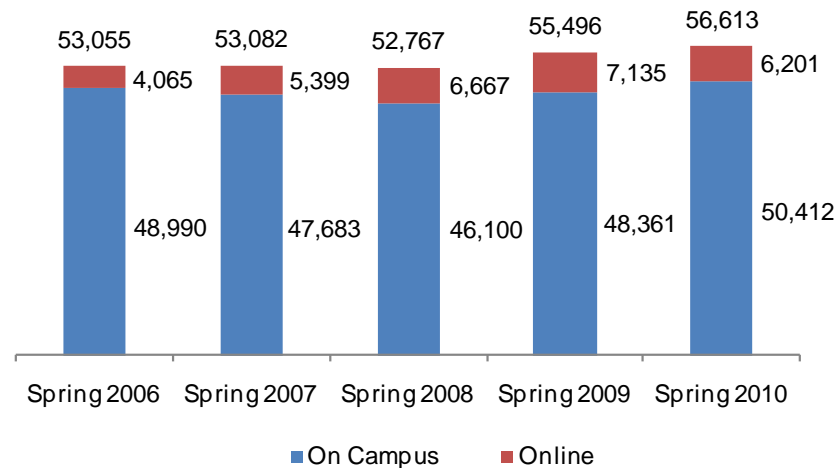


Figure 4.2.3. Mesa College Enrollments (Spring)



## Mesa College Section IV: Productivity and Efficiency (Fill Rates)

**Fill Rates:** The overall fill rates for Mesa College were the highest for the fall term, on average, when compared to spring and summer terms (86% vs. 83% & 74%, respectively) between 2005/06 and 2009/10. Overall fill rates for all colleges in the district followed the same pattern. On average, fill rates for the on campus mode of instruction across summer, fall, and spring terms (73%, 86%, & 83%) varied compared to those for the online mode of instruction (summer 81%, fall 85%, & spring 82% terms). Mesa College had higher overall fill rates, on average, compared to the fill rates of all colleges in the district across all modes of instruction.

Figure 4.3.1. Mesa College Fill Rates (Summer)

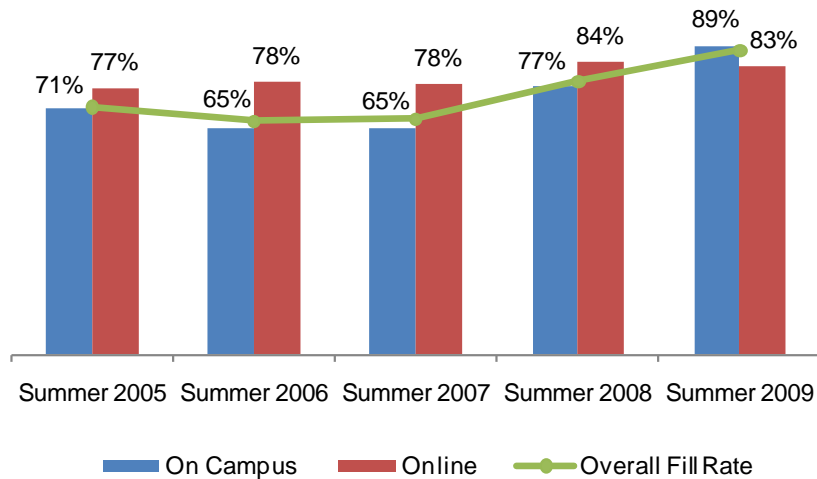


Figure 4.3.2. Mesa College Fill Rates (Fall)

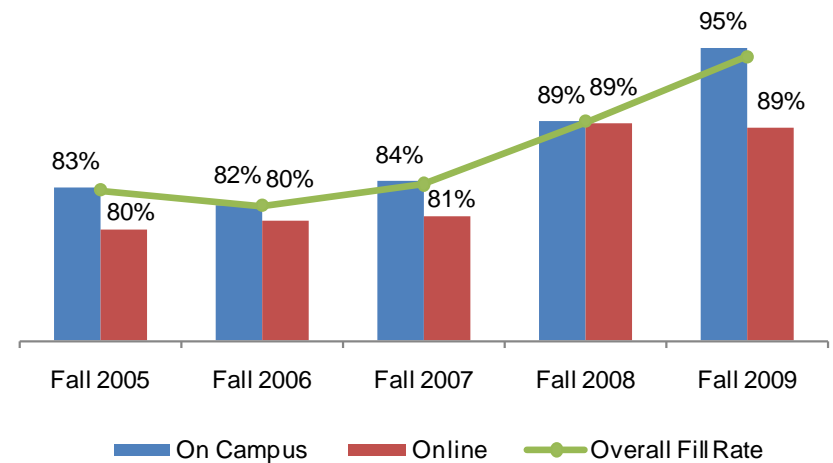
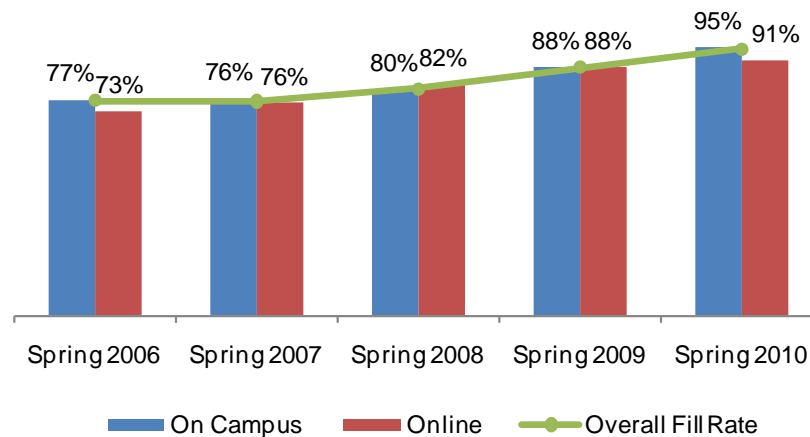


Figure 4.3.3. Mesa College Fill Rates (Spring)



## Mesa College Section IV: Productivity and Efficiency (Enrollments and Fill Rates)

Table 4.2. Mesa College Enrollments and Fill Rates

	On Campus			Online			Campus Total			All Colleges Total		
	Enrollment	Capacity	Fill Rate	Enrollment	Capacity	Fill Rate	Enrollment	Capacity	Fill Rate	Enrollment	Capacity	Fill Rate
Summer 2005	13,632	19,237	71%	1,396	1,817	77%	15,028	21,054	71%	29,691	41,844	71%
Summer 2006	12,324	18,877	65%	2,552	3,258	78%	14,876	22,135	67%	31,857	49,442	64%
Summer 2007	12,058	18,414	65%	3,503	4,501	78%	15,561	22,915	68%	34,839	52,410	66%
Summer 2008	12,552	16,287	77%	4,484	5,329	84%	17,036	21,616	79%	37,059	47,128	79%
Summer 2009	12,372	13,888	89%	3,691	4,439	83%	16,063	18,327	88%	37,124	41,903	89%
<b>Total</b>	<b>62,938</b>	<b>86,703</b>	<b>73%</b>	<b>15,626</b>	<b>19,344</b>	<b>81%</b>	<b>78,564</b>	<b>106,047</b>	<b>74%</b>	<b>170,570</b>	<b>232,727</b>	<b>73%</b>

	On Campus			Online			Campus Total			All Colleges Total		
	Enrollment	Capacity	Fill Rate	Enrollment	Capacity	Fill Rate	Enrollment	Capacity	Fill Rate	Enrollment	Capacity	Fill Rate
Fall 2005	49,150	59,014	83%	2,491	3,128	80%	51,641	62,142	83%	103,520	130,535	79%
Fall 2006	48,444	59,180	82%	3,649	4,533	80%	52,093	63,713	82%	106,600	139,984	76%
Fall 2007	47,946	57,182	84%	4,521	5,597	81%	52,467	62,779	84%	110,512	137,470	80%
Fall 2008	47,856	53,754	89%	5,604	6,301	89%	53,460	60,055	89%	112,978	130,309	87%
Fall 2009	48,674	50,988	95%	6,056	6,840	89%	54,730	57,828	95%	111,325	118,226	94%
<b>Total</b>	<b>242,070</b>	<b>280,118</b>	<b>86%</b>	<b>22,321</b>	<b>26,399</b>	<b>85%</b>	<b>264,391</b>	<b>306,517</b>	<b>86%</b>	<b>544,935</b>	<b>656,524</b>	<b>83%</b>

	On Campus			Online			Campus Total			All Colleges Total		
	Enrollment	Capacity	Fill Rate	Enrollment	Capacity	Fill Rate	Enrollment	Capacity	Fill Rate	Enrollment	Capacity	Fill Rate
Spring 2006	48,990	63,650	77%	4,065	5,595	73%	53,055	69,245	77%	108,155	146,751	74%
Spring 2007	47,683	62,606	76%	5,399	7,129	76%	53,082	69,735	76%	111,226	152,868	73%
Spring 2008	46,100	57,319	80%	6,667	8,116	82%	52,767	65,435	81%	112,436	139,660	81%
Spring 2009	48,361	54,784	88%	7,135	8,067	88%	55,496	62,851	88%	116,698	130,061	90%
Spring 2010	50,412	52,824	95%	6,201	6,820	91%	56,613	59,644	95%	113,607	119,491	95%
<b>Total</b>	<b>241,546</b>	<b>291,183</b>	<b>83%</b>	<b>29,467</b>	<b>35,727</b>	<b>82%</b>	<b>271,013</b>	<b>326,910</b>	<b>83%</b>	<b>562,122</b>	<b>688,831</b>	<b>82%</b>

Source: SDCCD Information System

Note: Fill rates are enrollments over the enrollment cap and do not include Positive Attendance, Non-credit, Apprenticeship, In-services, or cancelled courses.

## Mesa College Section IV: Productivity and Efficiency (Load)

**Load:** The Load value for Fall 2009 was greatest compared to the Load values for the previous four fall terms. Furthermore, the Load value for Spring 2010 was greater than the Load values for the previous four spring terms. Most of the Mesa College Load values were lower compared to all colleges in the district Load values across the fall and spring terms. The statewide benchmark for Load is 525 for a 17.5 week semester. SDCCD has set an internal benchmark of 557, which is commensurate to its 16.5 week semester.

Figure 4.4.1. Mesa College Fall Load

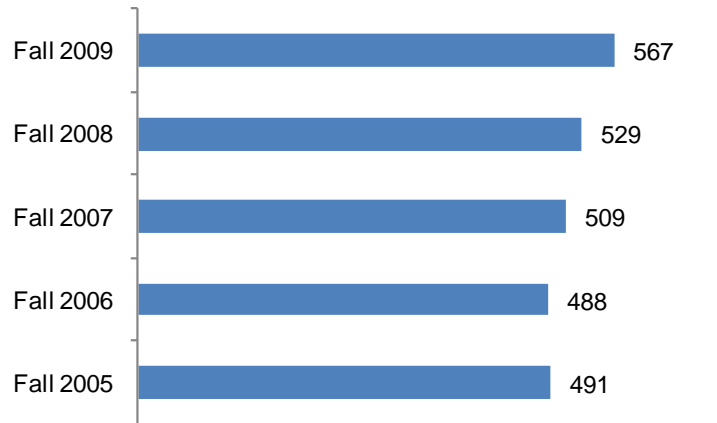


Figure 4.4.2. Mesa College Spring Load

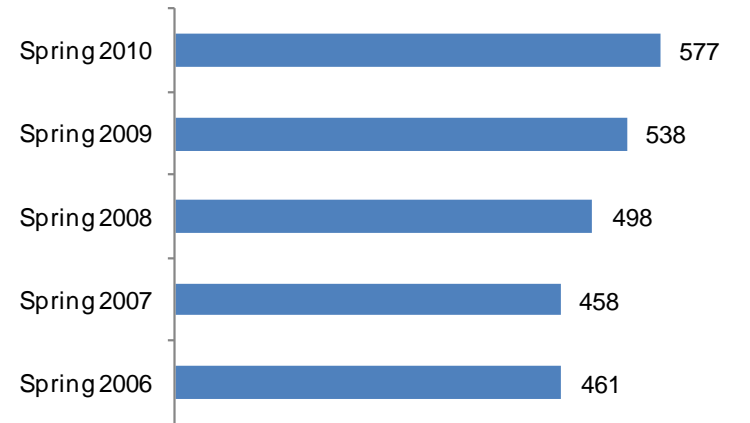


Table 4.4. Mesa College Load

	Mesa College Load	All Colleges Load
Fall 2005	491	500
Fall 2006	488	493
Fall 2007	509	503
Fall 2008	529	534
Fall 2009	567	571
Spring 2006	461	480
Spring 2007	458	470
Spring 2008	498	510
Spring 2009	538	547
Spring 2010	577	583

Source: SDCCD Information System

**Section V**  
**Human Resources**

## **Mesa College Section V: Human Resources**

---

This section of the Fact Book contains information on the number and classification of employees during the Fall 2009 semester. The information is reported as follows:

- 1) Gender
- 2) Ethnicity
- 3) Employee Classification

## Mesa College Section V: Human Resources

**Fall 2009 Employees by Ethnicity:** There were a total of 1,321 employees working at Mesa College during Fall 2009. The ethnic breakdown showed that White employees constituted 56% of the total employee population, followed by Latino and Asian (12% each) employees and African American employees (8%). Among classified staff, White employees constituted nearly half of the employees (47%) and made up almost two-thirds of the teaching faculty positions (64%) compared to all other ethnic groups. White employees constituted almost half (46%) of management positions, while Latino and African American employees held most of the remainder of the management positions (21% & 15%, respectively). Among supervisory staff positions, White employees comprised 36% of this group, while both Latino and African American constituted more than one-third (18% each) of this group.

Asian/Pacific Islander, Filipino, and Latino employee populations (12%, 1%, & 12%, respectively) at Mesa College were underrepresented relative to the Asian/Pacific Islander, Filipino, and Latino general student populations (15%, 5%, & 21%, respectively) at Mesa College. However, the White employee population (56%) at Mesa College was overrepresented relative to the White general student population (38%) at Mesa College. The employee populations of all other ethnic groups at Mesa College were comparable to the general student populations of all other ethnic groups at Mesa College.

Figure 5.1.1. Mesa College Fall 2009 Employees by Ethnicity

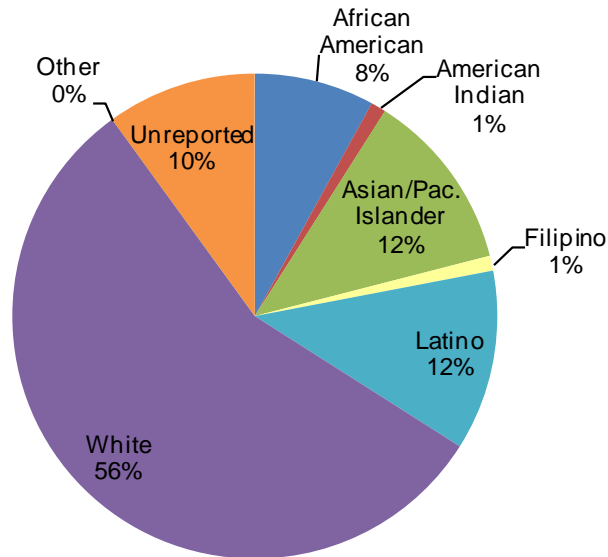
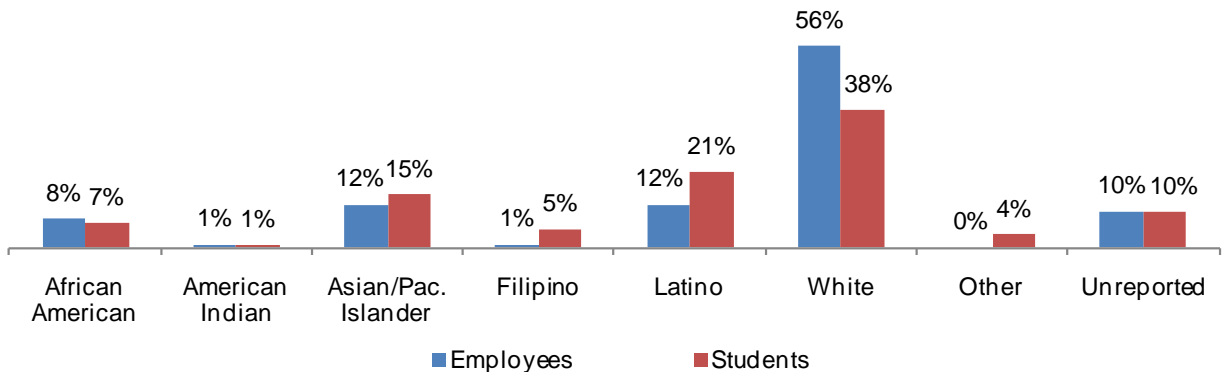


Figure 5.1.2. Mesa College Fall 2009 Employees compared to Students by Ethnicity



# Mesa College Section V: Human Resources

Table 5.1. Mesa College Fall 2009 Employees by Ethnicity

	African American		American Indian		Asian/Pacific Islander		Filipino		Latino		White		Other		Unreported		Total
Total Employees	103	8%	9	1%	162	12%	7	1%	162	12%	746	56%	5	0%	127	10%	1,321
Female	56	8%	4	1%	100	14%	4	1%	91	13%	387	54%	2	0%	70	10%	714
Male	47	8%	5	1%	62	10%	3	0%	71	12%	359	59%	3	0%	57	9%	607
Classified Staff	18	11%	-	-	19	12%	4	2%	33	20%	77	47%	1	1%	11	7%	163
Non-Academic Hourly	26	13%	3	2%	65	33%	-	-	21	11%	61	31%	1	1%	23	12%	200
Teaching Faculty	43	5%	4	1%	68	9%	-	-	87	11%	512	64%	2	0%	79	10%	795
Contract	14	7%	1	1%	17	9%	-	-	24	12%	117	60%	1	1%	22	11%	196
Adjunct	29	5%	3	1%	51	9%	-	-	63	11%	395	66%	1	0%	57	10%	599
Counseling Faculty	6	15%	1	3%	3	8%	1	3%	9	23%	18	46%	-	-	1	3%	39
Contract	4	15%	-	-	3	11%	1	4%	5	19%	13	48%	-	-	1	4%	27
Adjunct	2	17%	1	8%	-	-	-	-	4	33%	5	42%	-	-	-	-	12
Library Faculty	-	-	-	-	-	-	-	-	-	-	8	80%	-	-	2	20%	10
Contract	-	-	-	-	-	-	-	-	-	-	6	86%	-	-	1	14%	7
Adjunct	-	-	-	-	-	-	-	-	-	-	2	67%	-	-	1	33%	3
Police Officers	2	22%	-	-	-	-	-	-	2	22%	4	44%	1	11%	-	-	9
Community Service Officers	-	-	-	-	-	-	1	17%	2	33%	3	50%	-	-	-	-	6
Management	2	15%	-	-	-	-	-	-	2	21%	6	46%	-	-	3	21%	13
Supervisory Staff	4	18%	-	-	2	9%	1	5%	4	18%	8	36%	-	-	3	14%	22

Source: SDCCD Information System

Table 5.2. Mesa College Employees by Gender and Employment Status

Gender		Employment Status	
Female	54%	Full-Time/Contract	35%
Male	46%	Hourly/Adjunct	65%

Source: SDCCD Information System



**Section VI**  
**Concluding Remarks**

## **Mesa College Section VI: Concluding Remarks**

---

*Headcount.* Unduplicated student headcount for Mesa College showed a 12% increase between Fall 2005 and Fall 2009. Likewise, the unduplicated headcount between Spring 2006 and Spring 2010 also increased by 12%. Summer 2005 to Summer 2009 showed a 3% increase. With the exception of the summer term, unduplicated headcount increased steadily for most of the terms during the five-year period being reported. This increase is likely due in part to the downturned economy which frequently spawns renewed interest in retraining or retooling of skills or the learning of a new skill set.

*Demographics.* The student population remained majority female (53% on average) and generally young (75% on average were between 18-29 years old). In regards to ethnicity, the White student population was approximately twice as large (40%), on average, compared to the Latino and Asian/Pacific Islander student populations (19% & 16%, respectively). The fastest growing segment appeared to be the under 18 year old age group followed by the 50 years and older age group. The increase of the under 18 year old age group may be due to the increase of college classes offered at the high schools, while the increase in the 50 years and older age group may be due to the increase of this segmentation within the Continuing Education classes. Approximately one-third of the Mesa College student population lived outside the San Diego Community College District service area, which remained consistent over the five year reporting period.

*Units Attempted by Units Earned.* Students who enrolled in fewer units were more likely to complete the entire number of units attempted. On average, approximately two-thirds of those students who attempted between 0.1-5.9 units completed the attempted units. In contrast, approximately half of those who attempted greater than 8.9 units completed the attempted units.

*Persistence.* Two-thirds of the first-time credit college students who completed a fall term persisted and completed the subsequent spring term (66% on average) during the five years reported; 2005 to 2009. Female students persisted at a slightly higher rate than their male student counterpart (67% compared to 65%), while the average persistence rates by ethnicity ranged from 55% to 71%. A general trend showed that as age increased, term persistence decreased. In particular, younger first-time college credit students persisted at a higher rate than older students (68% for 18-24 years old compared to 29% for ages 50 years and older), which is likely due to the fact that the younger students are generally degree or transfer seeking with a longer range education plan than the older students.

*Student Outcomes: Success, Retention, and GPA.* The average successful course completion rate for the Mesa College student population was 67%, the average retention rate was 83%, and the average GPA was 2.64. On average, female students had higher success and retention rates and GPA than their male student counterpart. Student ages 18-24 years old, on average, had moderately high retention rates but the lowest success rates and GPA (82%, 64%, & 2.48, respectively). Since this segment makes up more than half of the student population, further investigation into this disparity seems warranted to clarify why this segment of the population underperforms in comparison to other age groups. Overall, Asian/Pacific Islander and White students had the highest success and retention rates and GPA, while African American students had the lowest success and retention rates and GPA.

## **Mesa College Section VI: Concluding Remarks**

---

*Student Outcomes: Awards Conferred.* On average, 76% of the total awards conferred at Mesa College were associate degrees. Of the total awards conferred at Mesa College, female students received more associate degrees, on average, than their male student counterpart. From 2005/06 to 2009/10, White students received the most awards across all award categories. Latino students and Asian/Pacific Islander students had the second and third highest number of awards received at Mesa College. These trends reflect the fact that these three ethnicities (White, Latino, & Asian/Pacific Islander students) constitute the greatest proportions of the student headcount population at Mesa College. Approximately three-quarters of the total number of associate degrees awarded between 2005/06 and 2009/10 were to students between ages 18-29 years old.

*Student Outcomes: Transfer Volume.* The annual transfer volume for Mesa College increased 39%, from 1,144 in 2005/06 to 1,592 in 2009/10. On average, nearly half of the transfers were to the CSU system (48%), followed by UC (23%), Out-of-State institutions (18%), and finally In-State private institutions (12%). The African-American student population exhibited the largest increase in transfer volume (240%), from 25 in 2005/06 to 85 in 2009/10.

*Productivity and Efficiency.* Total duplicated headcounts/enrollments at Mesa College increased by approximately 6% from 2005/6 to 2009/10. Similarly, total FTES increased by 4% during this same reporting period. Both showed an initial decrease followed by a surge in enrollment and FTES between 2006/07 and 2009/10. Fill rates also showed marked increases during this period (88% in Summer 2009 and 95% in both Fall 2009 and Spring 2010) and Load (WSCH/FTEF) was at an all time high in both Fall 2009 and Spring 2010 (567 & 577, respectively).

*Human Resources.* There were a total of 1,321 employees working at Mesa College during Fall 2009. The Asian/Pacific Islander, Filipino, and Latino employee populations (12%, 1%, & 12%, respectively) were underrepresented relative to the Asian/Pacific Islander, Filipino, and Latino student populations (15%, 5%, & 21%, respectively) that Mesa College serves. The White employee population (56%) at Mesa College was overrepresented relative to the White general student population (38%).