

2012

Fact Book

Miramar College



Prepared by:
Office of Institutional Research and Planning
September 2012

Miramar College Fact Book 2012

Overview.....	1	Annual Retention Rates	
Section I.I. Headcount and Student Characteristics	2	Overall.....	35
Section Overview	3	By Gender	36
Overall	4	By Ethnicity	37
By Gender.....	5	By Age.....	38
By Ethnicity.....	6	Annual GPA	
By Age.....	7	Overall.....	39
By Enrollment Status	8	By Gender	40
By Educational Objective	9	By Ethnicity	41
By Primary Language.....	11	By Age.....	42
By Prior Education Level	12	Annual Awards Conferred	
By Service Area of Residence	13	Overall.....	43
By First Generation	14	By Gender	44
By Income Level	15	By Ethnicity	46
By DSPS	16	By Age.....	50
By EOPS.....	17	Annual Transfer Volume	
By Day, Evening, and Online Status	18	Overall.....	53
By Units Attempted by Units Earned	19	By Gender	54
Section II. Fall to Spring Term Persistence Rates	21	By Ethnicity	55
Section Overview	22	By Age.....	56
Overall	23	By CSU-UC/Private (In-state)/Out-of-State	57
By Gender.....	24	By CSU/UC	58
By Ethnicity.....	25	By Institution Type (Private vs. Public).....	59
By Age.....	27	Section IV. Productivity and Efficiency	60
Section III. Student Outcomes	28	Section Overview.....	61
Section Overview	30	Annual FTES	62
Annual Success Rates		Enrollments: Online and On Campus	63
Overall	31	Fill Rates.....	64
By Gender.....	32	Load	66
By Ethnicity.....	33	Section V. Human Resources	67
By Age.....	34	Section Overview	68
		Fall 2011 Employee Breakdown	69

Miramar College Fact Book 2012

OVERVIEW

This Fact Book is a publication of the Office of Institutional Research and Planning for the San Diego Community College District. It is designed to serve the information needs of the community with a primary focus on student enrollment, demographics, and outcomes.

The Fact Book is a rich source of districtwide trend information that may be used for planning and decision making. The book contains the following five sections:

- 1) **Headcount and Student Characteristics.** Provides information on student demographic characteristics (e.g., age, ethnicity, and education objective) over five years.
- 2) **Term Persistence Rates.** Provides information about first-time to college students who complete a fall term and enroll in the subsequent spring term. The information is also reported by demographic characteristics of interest.
- 3) **Student Outcomes.** Provides information on students' successful course completion rates, retention rates, GPA, awards conferred, and transfer volume. All of the information is provided in summary form, as well as demographic characteristics of interest.
- 4) **Productivity and Efficiency.** Provides information on annual FTES, enrollment, fill rates, and Load (WSCH/FTEF).
- 5) **Human Resources.** Provides information on the number of employees by ethnicity, gender and employment type.

Each section contains the following benchmarks: 1) The percentage change over the five year period being reported, 2) The collegewide average, and 3) The "All Colleges" averages includes all three colleges.

Section I
Headcount and Student Characteristics

Miramar College Fact Book 2012

This section of the Fact Book contains student headcount by various student characteristics. The headcount figures are single student counts (unduplicated headcount) based on official census counts at the end of the semester (all students who dropped or never attended prior to the class census date were not included). Furthermore, all cancelled classes are excluded from analyses. The headcount information is reported over a period of five years to analyze trends and establish benchmarks. Headcount information is reported by the following segments:

- 1) Overall
- 2) Gender
- 3) Ethnicity
- 4) Age
- 5) Enrollment Status
- 6) Educational Objective
- 7) Primary Language
- 8) Prior Education Level
- 9) Service Area of Residence
- 10) First Generation
- 11) Income Level
- 12) DSPS
- 13) EOPS
- 14) Day, Evening, and Online Status
- 15) Units Attempted by Units Earned

Miramar College Fact Book 2012

Overall Headcount: Unduplicated student headcount for Miramar College showed an 8% steady increase, from 11,640 in Fall 2007 to 12,589 in Fall 2011. Unduplicated student headcount for Miramar College showed an 83% decrease, from 7,725 in Summer 2007 to 1,314 in Summer 2011. Finally, unduplicated student headcount for Miramar College showed a 12% increase between Spring 2008 and Spring 2012.

Figure 1.1. Miramar College Overall Headcount (Fall)

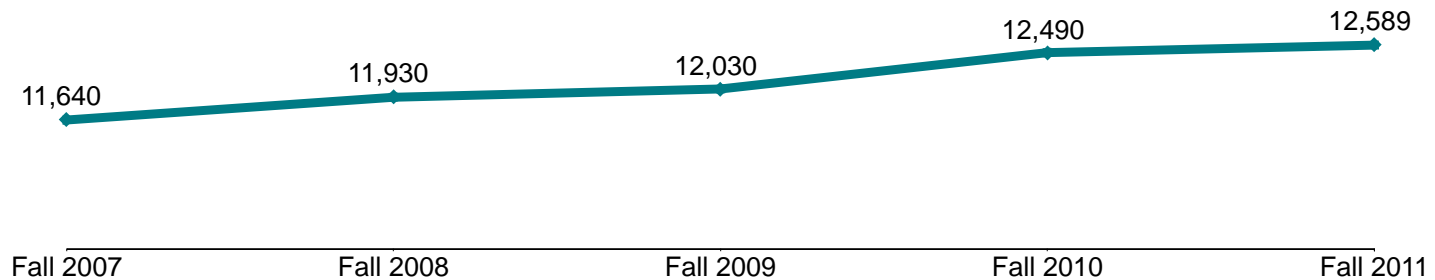


Table 1.1. Miramar College Overall Headcount (Summer, Fall, and Spring)

	Summer 07	Summer 08	Summer 09	Summer 10	Summer 11	% Change Summer 07-11
Total	7,725	6,813	6,720	7,530	1,314	-83%

	Fall 07	Fall 08	Fall 09	Fall 10	Fall 11	% Change Fall 07-11
Total	11,640	11,930	12,030	12,490	12,589	8%

	Spring 08	Spring 09	Spring 10	Spring 11	Spring 12	% Change Spring 08-12
Total	12,433	13,114	12,462	13,655	13,894	12%

Source: SDCCD Information System

Miramar College Fact Book 2012

Headcount by Gender: On average, the male student headcount (55%) was higher than their female student counterpart (45%), which has remained fairly consistent between Fall 2007 and Fall 2011. Both male and female student headcounts increased (10% & 6%, respectively) between Fall 2007 to Fall 2011, which paralleled the overall student population trend.

Figure 1.2. Miramar College Headcount by Gender

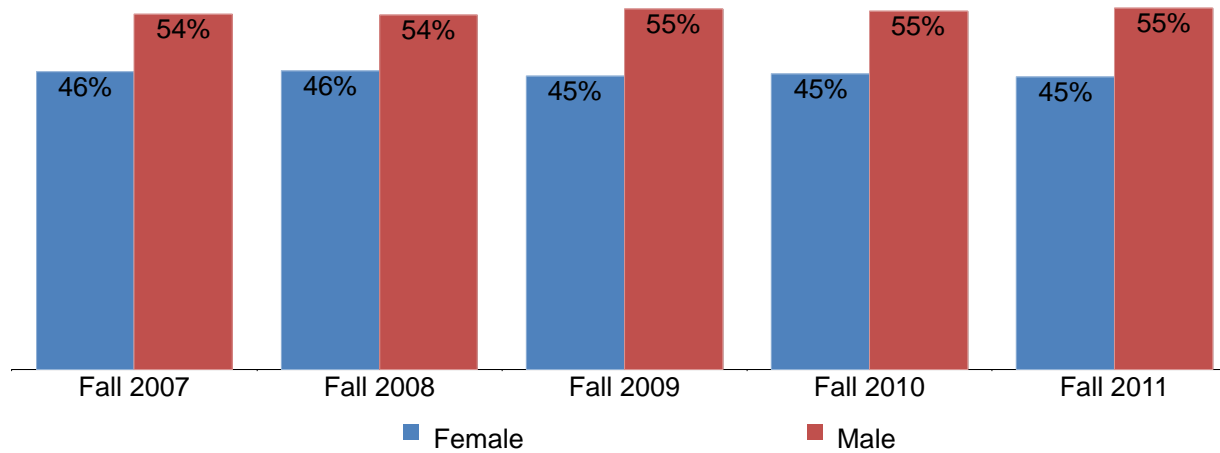


Table 1.2. Miramar College Headcount by Gender

	Fall 07		Fall 08		Fall 09		Fall 10		Fall 11		% Change Fall 07-11	College Average Fall 07-11	All Colleges Average Fall 07-11
Female	5,299	46%	5,453	46%	5,397	45%	5,641	45%	5,634	45%	6%	45%	51%
Male	6,328	54%	6,469	54%	6,631	55%	6,847	55%	6,953	55%	10%	55%	49%
Unreported	13	0%	8	0%	2	0%	2	0%	2	0%	-85%	0%	0%
Total	11,640	100%	11,930	100%	12,030	100%	12,490	100%	12,589	100%	8%	100%	100%

Source: SDCCD Information System

Miramar College Fact Book 2012

Headcount by Ethnicity: The ethnic groups that comprised the largest headcounts between Fall 2007 and Fall 2011 were White students (40%), Latino students (17%), and Asian/Pacific Islander students (15%) on average. At Miramar College, the Latino student population increased 59%. In contrast, the Filipino student population declined 5% between Fall 2007 and Fall 2011. Both the Latino and African American student headcounts at Miramar College (17% & 6%, respectively) were underrepresented compared to the Latino and African American student headcounts (26% & 8%, respectively) for all colleges in the district. However, Asian/Pacific Islander, Filipino, and White student headcounts at Miramar College (15%, 9%, & 40%, respectively) were overrepresented compared to the same ethnic groups for all colleges in the district (12%, 6%, & 36%, respectively).

Figure 1.3. Miramar College Headcount by Ethnicity

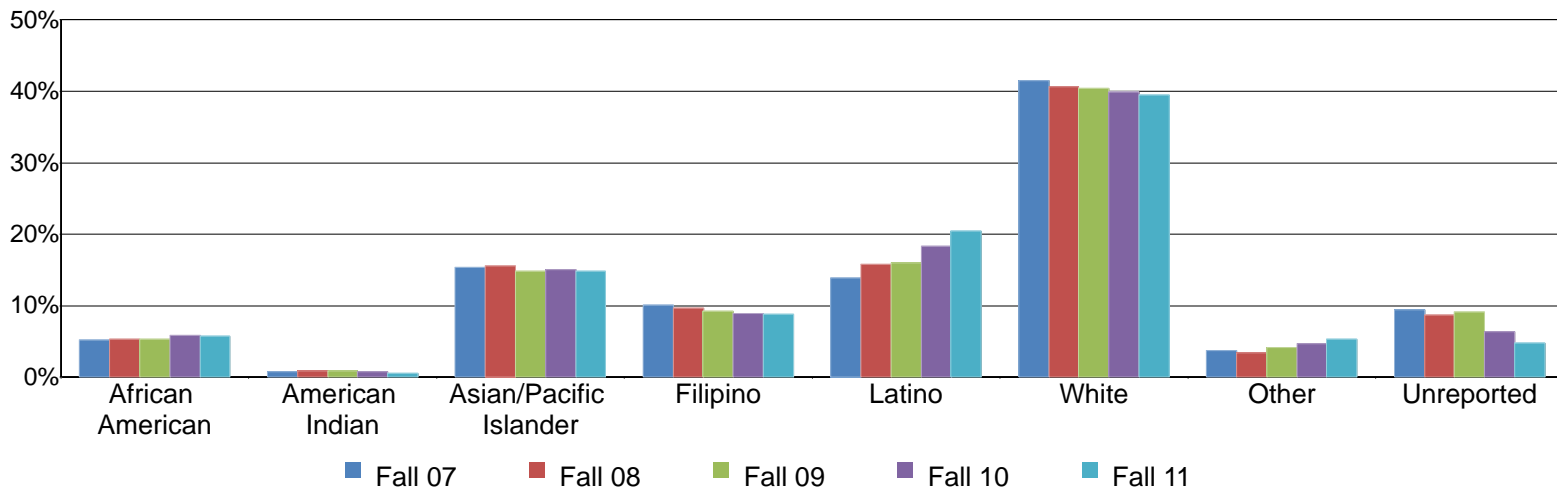


Table 1.3. Miramar College Headcount by Ethnicity

	Fall 07		Fall 08		Fall 09		Fall 10		Fall 11		% Change Fall 07-11	College Average Fall 07-11	All Colleges Average Fall 07-11
African American	612	5%	638	5%	645	5%	734	6%	721	6%	18%	6%	8%
American Indian	94	1%	104	1%	102	1%	93	1%	75	1%	-20%	1%	1%
Asian/Pacific Islander	1,786	15%	1,859	16%	1,786	15%	1,882	15%	1,868	15%	5%	15%	12%
Filipino	1,170	10%	1,151	10%	1,109	9%	1,112	9%	1,106	9%	-5%	9%	6%
Latino	1,621	14%	1,879	16%	1,926	16%	2,292	18%	2,570	20%	59%	17%	26%
White	4,828	41%	4,852	41%	4,864	40%	4,988	40%	4,971	39%	3%	40%	36%
Other	434	4%	409	3%	495	4%	587	5%	672	5%	55%	4%	4%
Unreported	1,095	9%	1,038	9%	1,103	9%	802	6%	606	5%	-45%	8%	7%
Total	11,640	100%	11,930	100%	12,030	100%	12,490	100%	12,589	100%	8%	100%	100%

Source: SDCCD Information System

Miramar College Fact Book 2012

Headcount by Age: Students who were between ages 18 and 24, on average, constituted almost half of the Miramar student population (48%). Of the total Miramar student population, students age 50 and older increased 42%, from 543 in Fall 2007 to 770 in Fall 2011. However, students under 18 years old displayed a decreased trend in headcount (88%). Student headcount for those who were between ages 18 and 24 years old displayed the greatest disparity at Miramar College when compared to the student headcount of the same age group for all colleges in the district (48% & 52%, respectively).

Figure 1.4. Miramar College Headcount by Age

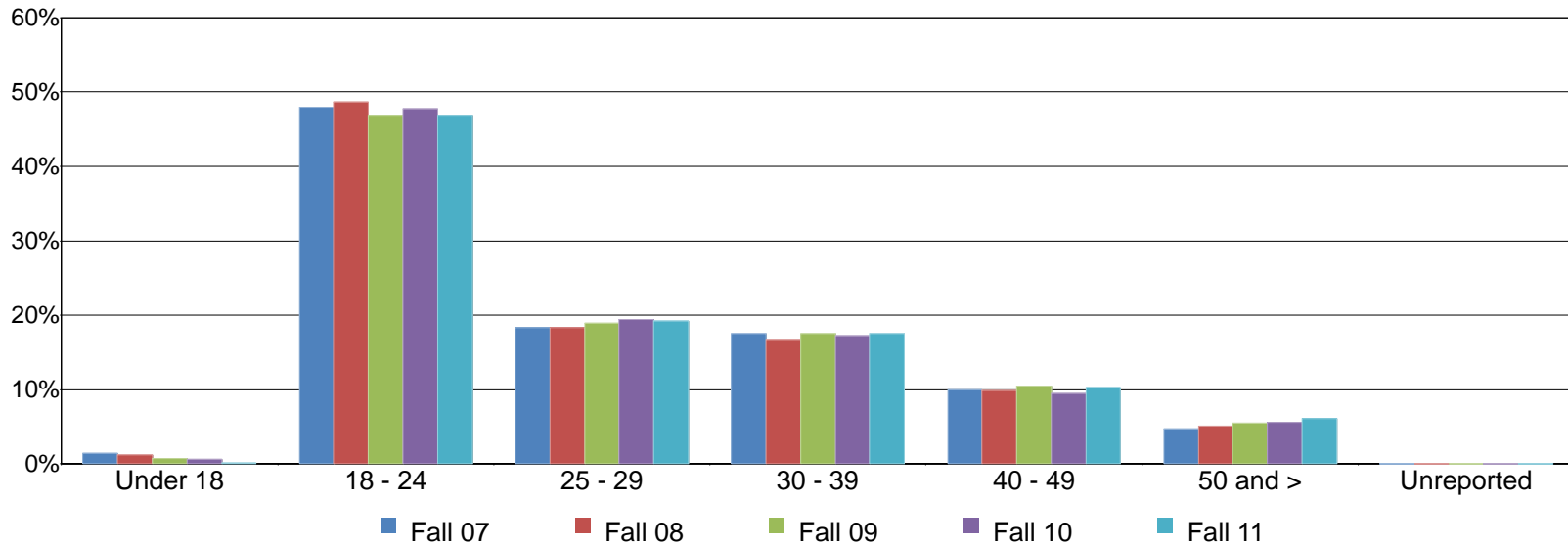


Table 1.4. Miramar College Headcount by Age

	Fall 07	Fall 08	Fall 09	Fall 10	Fall 11	% Change Fall 07-11	College Average Fall 07-11	All Colleges Average Fall 07-11
Under 18	161	146	92	78	19	-88%	1%	3%
18 - 24	5,587	5,808	5,628	5,966	5,881	5%	48%	52%
25 - 29	2,136	2,183	2,280	2,424	2,422	13%	19%	18%
30 - 39	2,042	2,001	2,108	2,147	2,203	8%	17%	15%
40 - 49	1,165	1,184	1,263	1,181	1,294	11%	10%	7%
50 and >	543	605	659	694	770	42%	5%	5%
Unreported	6	3	0	0	0	-100%	0%	0%
Total	11,640	11,930	12,030	12,490	12,589	8%	100%	100%

Source: SDCCD Information System

Miramar College Fact Book 2012

Headcount by Enrollment Status: On average, 64% of the student population comprised continuing students. The number of returning transfer students declined 44%, from 1,024 in Fall 2007 to 570 in Fall 2011. However, the number of returning students who were enrolled at Miramar College nearly doubled (98%), from 773 in Fall 2007 to 1,532 in Fall 2011.

Figure 1.5. Miramar College Headcount by Enrollment Status

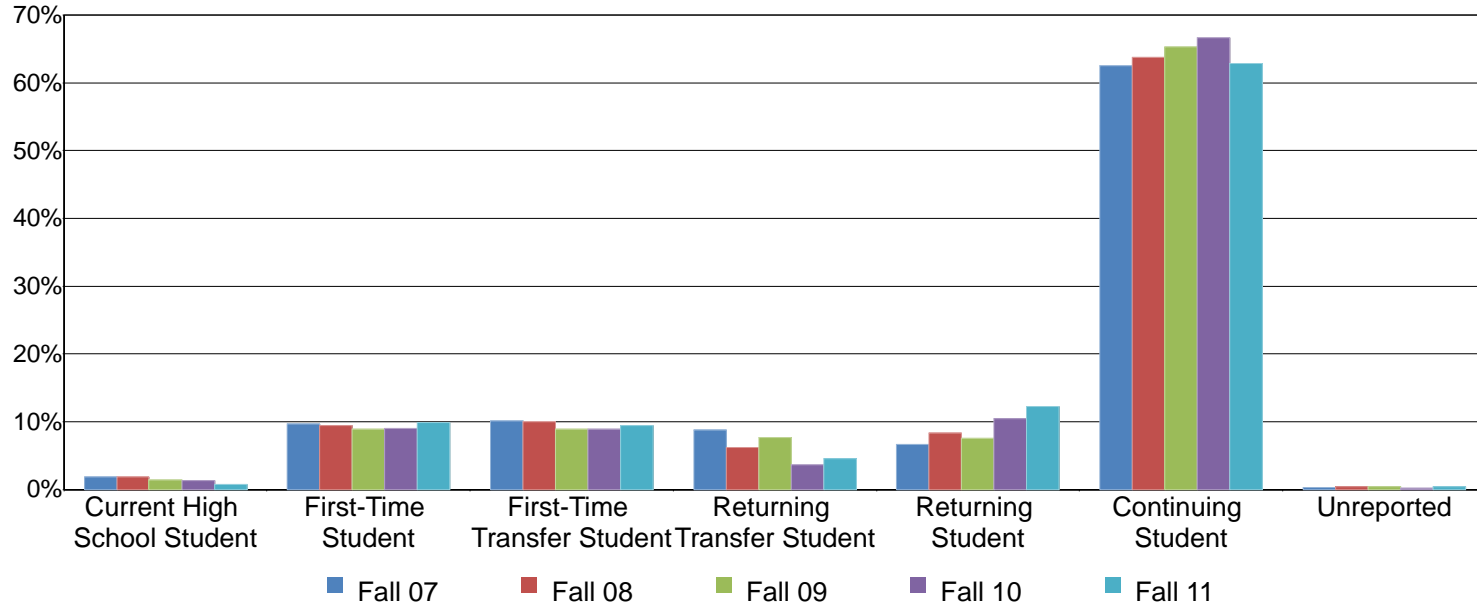


Table 1.5. Miramar College Headcount by Enrollment Status

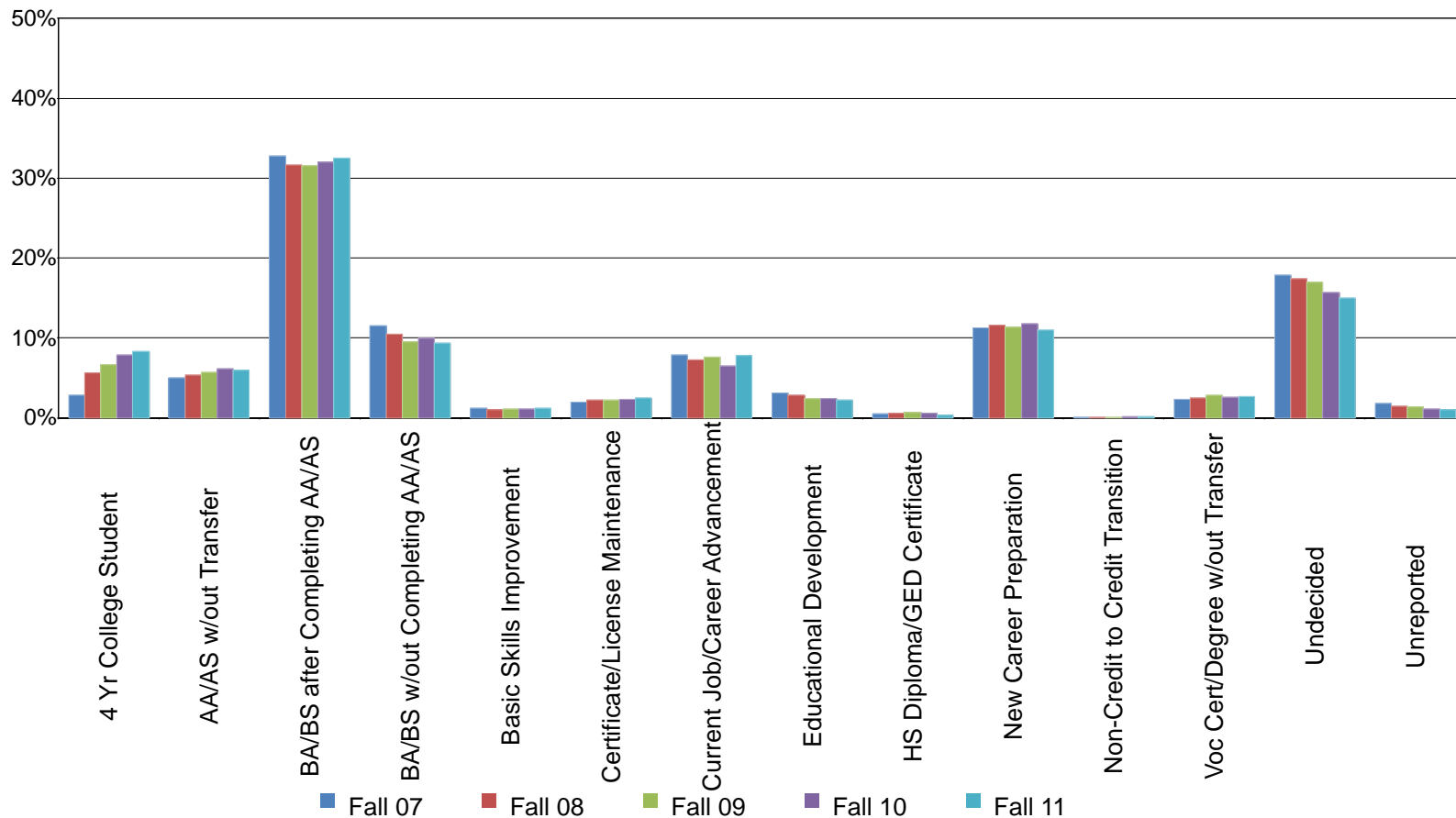
	Fall 07		Fall 08		Fall 09		Fall 10		Fall 11		% Change Fall 07-11	College Average Fall 07-11	All Colleges Average Fall 07-11
Current High School Student	221	2%	218	2%	164	1%	157	1%	97	1%	-56%	1%	3%
First-Time Student	1,130	10%	1,130	9%	1,067	9%	1,122	9%	1,240	10%	10%	9%	11%
First-Time Transfer Student	1,173	10%	1,190	10%	1,069	9%	1,105	9%	1,184	9%	1%	9%	12%
Returning Transfer Student	1,024	9%	741	6%	915	8%	450	4%	570	5%	-44%	6%	4%
Returning Student	773	7%	993	8%	913	8%	1,305	10%	1,532	12%	98%	9%	7%
Continuing Student	7,287	63%	7,614	64%	7,860	65%	8,327	67%	7,919	63%	9%	64%	62%
Unreported	32	0%	44	0%	42	0%	24	0%	47	0%	47%	0%	0%
Total	11,640	100%	11,930	100%	12,030	100%	12,490	100%	12,589	100%	8%	100%	100%

Source: SDCCD Information System

Miramar College Fact Book 2012

Headcount by Educational Objective: Almost half of the Miramar student population (42%) selected transfer to obtain a BA/BS with or without completing an AA/AS degree as their educational objective during the five terms being reported. Between Fall 2007 and Fall 2011, the educational objectives that made the most gains in popularity were 4 year college student (increased by 217%) and to maintain certificate/license (increased by 34%). In contrast, students who selected to obtain a high school diploma/GED and educational development as educational objectives decreased 17% and 21%, respectively.

Figure 1.6. Miramar College Headcount by Educational Objective



Miramar College Fact Book 2012

Table 1.6. Miramar College Headcount by Educational Objective

	Fall 07		Fall 08		Fall 09		Fall 10		Fall 11		% Change Fall 07-11	College Average Fall 07-11	All Colleges Average Fall 07-11
4 Yr College Student	330	3%	665	6%	800	7%	979	8%	1,047	8%	217%	6%	8%
AA/AS w/out Transfer	579	5%	644	5%	682	6%	762	6%	751	6%	30%	6%	5%
BA/BS after Completing AA/AS	3,812	33%	3,771	32%	3,800	32%	3,999	32%	4,095	33%	7%	32%	34%
BA/BS w/out Completing AA/AS	1,345	12%	1,248	10%	1,140	9%	1,242	10%	1,174	9%	-13%	10%	11%
Basic Skills Improvement	140	1%	124	1%	137	1%	136	1%	155	1%	11%	1%	1%
Certificate/License Maintenance	234	2%	267	2%	268	2%	287	2%	313	2%	34%	2%	2%
Current Job/Career Advancement	917	8%	866	7%	916	8%	808	6%	976	8%	6%	8%	4%
Educational Development	360	3%	344	3%	288	2%	305	2%	283	2%	-21%	3%	3%
HS Diploma/GED Certificate	54	0%	69	1%	78	1%	69	1%	45	0%	-17%	0%	1%
New Career Preparation	1,314	11%	1,387	12%	1,362	11%	1,470	12%	1,389	11%	6%	11%	11%
Non-Credit to Credit Transition	8	0%	8	0%	10	0%	17	0%	14	0%	75%	0%	0%
Voc Cert/Degree w/out Transfer	267	2%	293	2%	340	3%	321	3%	341	3%	28%	3%	2%
Undecided	2,075	18%	2,073	17%	2,040	17%	1,962	16%	1,882	15%	-9%	17%	16%
Unreported	205	2%	171	1%	169	1%	133	1%	124	1%	-40%	1%	1%
Total	11,640	100%	11,930	100%	12,030	100%	12,490	100%	12,589	100%	8%	100%	100%

Source: SDCCD Information System

Miramar College Fact Book 2012

Headcount by Primary Language: On average, 94% of the Miramar student population spoke English as their primary language. This was comparable to the overall student population for all colleges in the district (93%). There was an increase for those who reported speaking English and those who spoke a language other than English (8% & 12%, respectively).

Figure 1.7. Miramar College Headcount by Primary Language

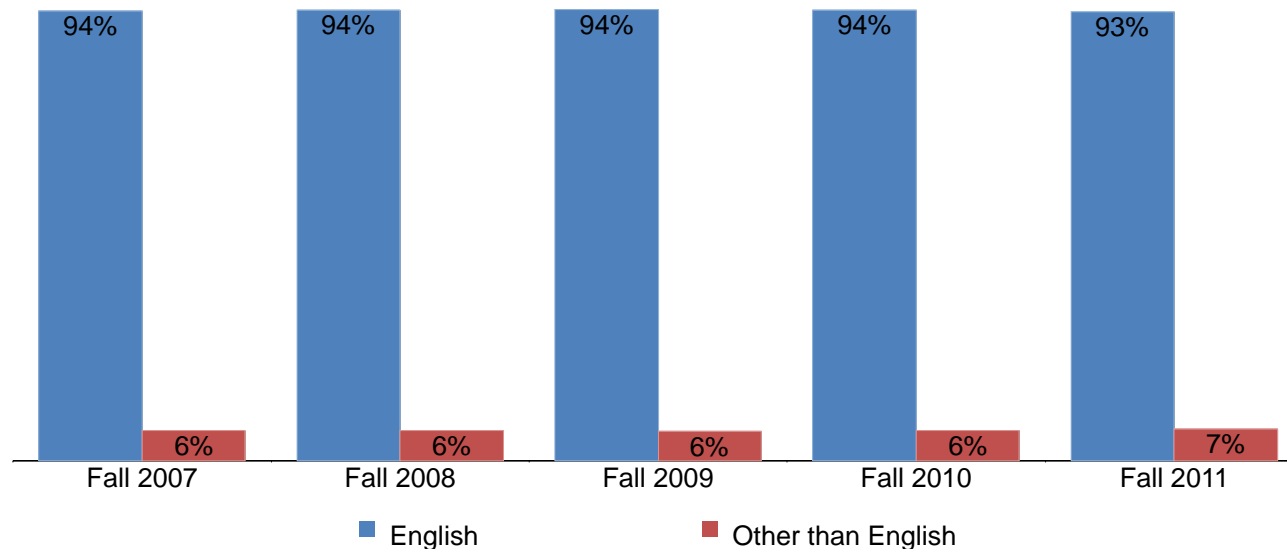


Table 1.7. Miramar College Headcount by Primary Language

	Fall 07	Fall 08	Fall 09	Fall 10	Fall 11	% Change Fall 07-11	College Average Fall 07-11	All Colleges Average Fall 07-11
English	10,898 94%	11,183 94%	11,292 94%	11,712 94%	11,768 93%	8%	94%	93%
Other than English	730 6%	739 6%	736 6%	775 6%	819 7%	12%	6%	7%
Unreported	12 0%	8 0%	2 0%	3 0%	2 0%	-83%	0%	0%
Total	11,640 100%	11,930 100%	12,030 100%	12,490 100%	12,589 100%	8%	100%	100%

Source: SDCCD Information System

Miramar College Fact Book 2012

Headcount by Prior Education Level: From Fall 2007 to Fall 2011, a majority of the Miramar College student population were high school graduates (66%) on average. Miramar students who had a certification of California high school proficiency increased 23%, from 64 in Fall 2007 to 79 in Fall 2011. On average, 15% of the Miramar student population had a bachelor's degree or higher and 7% had an associate degree.

Figure 1.8. Miramar College Headcount by Prior Education Level

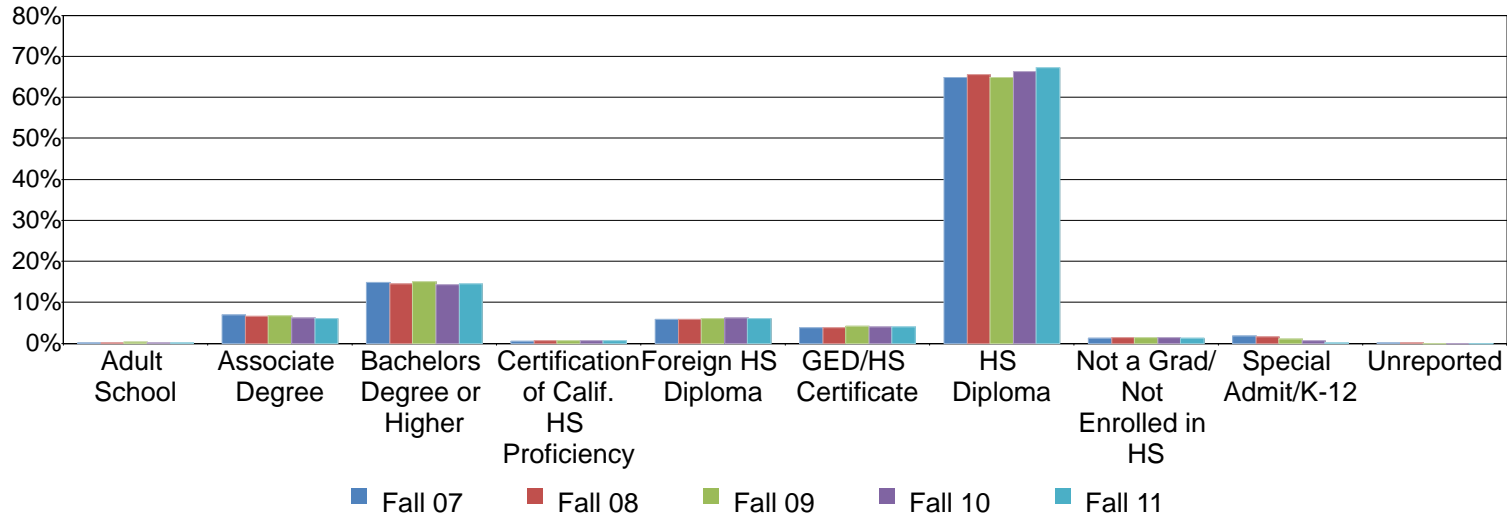


Table 1.8. Miramar College Headcount by Prior Education Level

	Fall 07	Fall 08	Fall 09	Fall 10	Fall 11	% Change Fall 07-11	College Average Fall 07-11	All Colleges Average Fall 07-11
Adult School	17	23	26	16	19	12%	0%	0%
Associate Degree	809	787	814	778	759	-6%	7%	5%
Bachelors Degree or Higher	1,737	1,720	1,798	1,788	1,828	5%	15%	11%
Certification of Calif. HS Proficiency	64	73	87	92	79	23%	1%	1%
Foreign HS Diploma	682	687	720	770	752	10%	6%	5%
GED/HS Certificate	443	460	495	500	511	15%	4%	5%
HS Diploma	7,540	7,827	7,807	8,288	8,468	12%	66%	68%
Not a Grad/Not Enrolled in HS	144	165	161	165	163	13%	1%	2%
Special Admit/K-12	198	184	122	93	10	-95%	1%	3%
Unreported	6	3	0	0	0	-100%	0%	0%
Total	11,640	11,929	12,030	12,490	12,589	8%	100%	100%

Source: SDCCD Information System

Miramar College Fact Book 2012

Headcount by Service Area of Residence: Between Fall 2007 and Fall 2011, on average, 27% of the students who attended Miramar College resided within the Miramar service area. Among the three college service areas, the greatest proportion of Miramar students resided within its service area. Forty-eight percent of the students who attended Miramar College resided outside of the Miramar service area.

Figure 1.9. Miramar College Headcount by Service Area of Residence

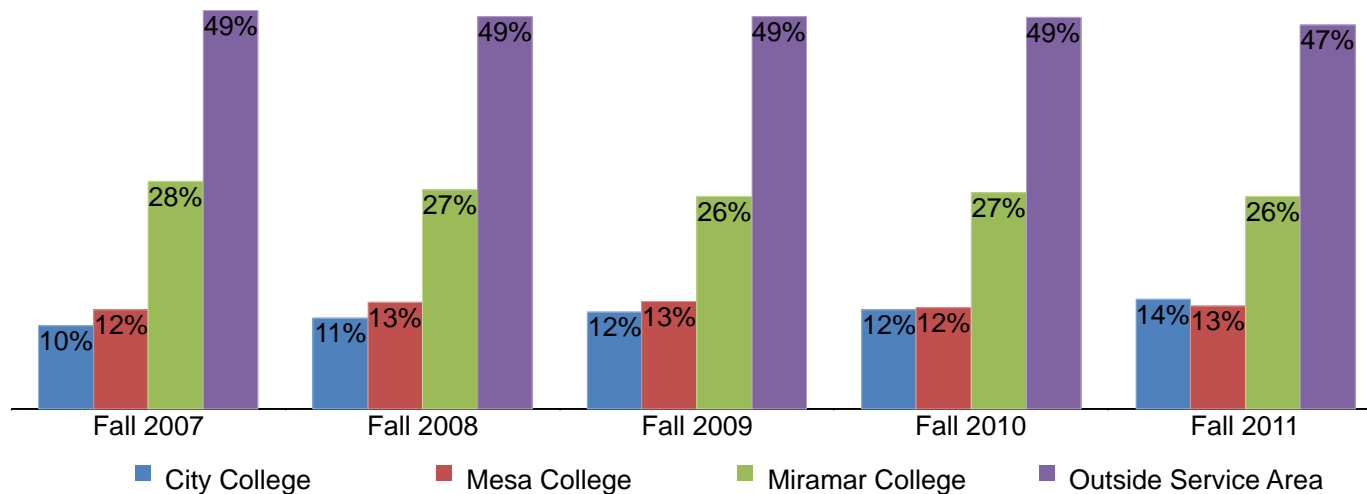


Table 1.9. Miramar College Headcount by Service Area of Residence

	Fall 07		Fall 08		Fall 09		Fall 10		Fall 11		% Change Fall 07-11	College Average Fall 07-11	All Colleges Average Fall 07-11
City College	1,192	10%	1,332	11%	1,435	12%	1,530	12%	1,703	14%	43%	12%	30%
Mesa College	1,420	12%	1,573	13%	1,593	13%	1,560	12%	1,598	13%	13%	13%	22%
Miramar College	3,280	28%	3,231	27%	3,166	26%	3,342	27%	3,309	26%	1%	27%	11%
Outside Service Area	5,742	49%	5,790	49%	5,836	49%	6,058	49%	5,979	47%	4%	48%	37%
Unreported	6	0%	3	0%	0	0%	0	0%	0	0%	-100%	0%	0%
Total	11,640	100%	11,929	100%	12,030	100%	12,490	100%	12,589	100%	8%	100%	100%

Source: SDCCD Information System

Miramar College Fact Book 2012

Headcount by First Generation: Between Fall 2007 and Fall 2011, on average, one in five Miramar students reported being first generation college students (22%). Both groups of students, those who were and those who were not first generation college students, displayed an increase in headcount between Fall 2007 and Fall 2011 (23% & 5%, respectively).

Figure 1.10. Miramar College Headcount by First Generation

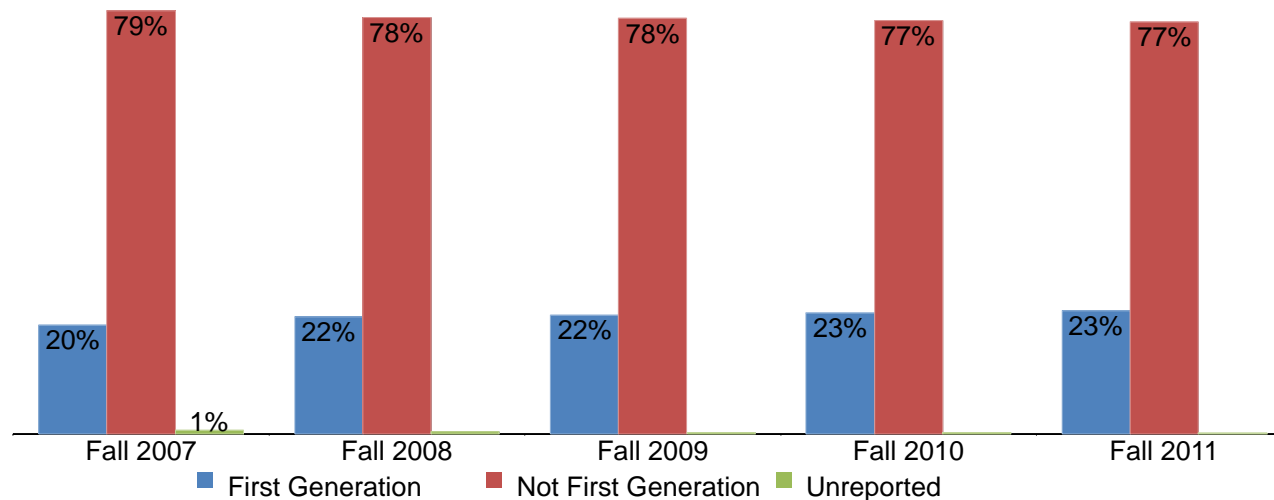


Table 1.10. Miramar College Headcount by First Generation

	Fall 07		Fall 08		Fall 09		Fall 10		Fall 11		% Change Fall 07-11	College Average Fall 07-11	All Colleges Average Fall 07-11
First Generation	2,361	20%	2,610	22%	2,659	22%	2,823	23%	2,898	23%	23%	22%	27%
Not First Generation	9,200	79%	9,276	78%	9,345	78%	9,646	77%	9,680	77%	5%	78%	73%
Unreported	79	1%	43	0%	26	0%	21	0%	11	0%	-86%	0%	0%
Total	11,640	100%	11,929	100%	12,030	100%	12,490	100%	12,589	100%	8%	100%	100%

Source: SDCCD Information System

Miramar College Fact Book 2012

Headcount by Income Level: Between Fall 2007 and Fall 2011, almost one-third (30%) of the Miramar student population reported an annual income of \$33,000 or more a year on average. The number of students who reported an annual income of \$0-2,999 a year on average increased 112%, from 743 in Fall 2007 to 1,577 in Fall 2011. It should be noted that almost one-third of students did not report their income level. Consequently, the data may not be representative of the actual income level of students at Miramar College.

Figure 1.11. Miramar College Headcount by Income Level

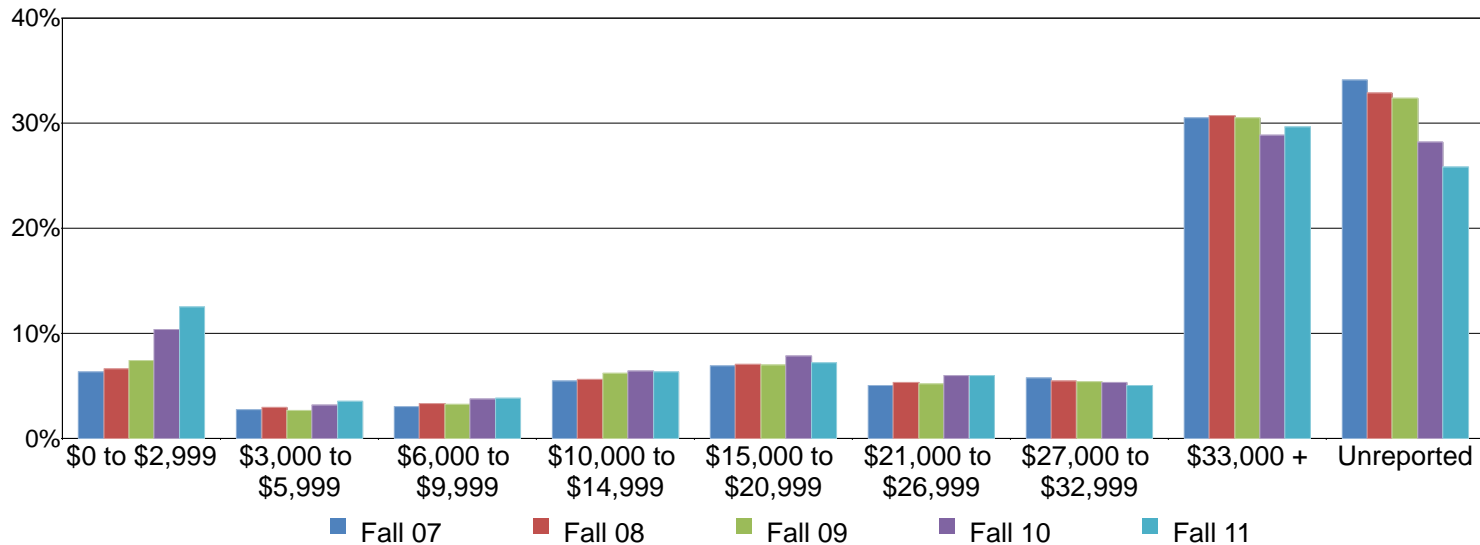


Table 1.11. Miramar College Headcount by Income Level

	Fall 07		Fall 08		Fall 09		Fall 10		Fall 11		% Change Fall 07-11	College Average Fall 07-11	All Colleges Average Fall 07-11
\$0 to \$2,999	743	6%	796	7%	898	7%	1,293	10%	1,577	13%	112%	9%	11%
\$3,000 to \$5,999	323	3%	354	3%	322	3%	395	3%	448	4%	39%	3%	4%
\$6,000 to \$9,999	351	3%	397	3%	392	3%	470	4%	485	4%	38%	3%	4%
\$10,000 to \$14,999	642	6%	673	6%	743	6%	806	6%	797	6%	24%	6%	8%
\$15,000 to \$20,999	810	7%	844	7%	839	7%	979	8%	913	7%	13%	7%	9%
\$21,000 to \$26,999	586	5%	635	5%	626	5%	746	6%	757	6%	29%	6%	6%
\$27,000 to \$32,999	674	6%	653	5%	650	5%	670	5%	633	5%	-6%	5%	6%
\$33,000 +	3,546	30%	3,660	31%	3,670	31%	3,605	29%	3,732	30%	5%	30%	24%
Unreported	3,965	34%	3,917	33%	3,890	32%	3,526	28%	3,247	26%	-18%	31%	28%
Total	11,640	100%	11,929	100%	12,030	100%	12,490	100%	12,589	100%	8%	100%	100%

Source: SDCCD Information System

Miramar College Fact Book 2012

Headcount by Disability Support Programs and Services (DSPS): On average, 2% of the Miramar student population received disability support services between Fall 2007 and Fall 2011. This was comparable to the percentage of students served by DSPS for all colleges in the district. Moreover, the number of students who received and had not received disability services increased 61% and 7%, respectively, from Fall 2007 to Fall 2011.

Figure 1.12. Miramar College Headcount by Disability Support Programs and Services (DSPS)

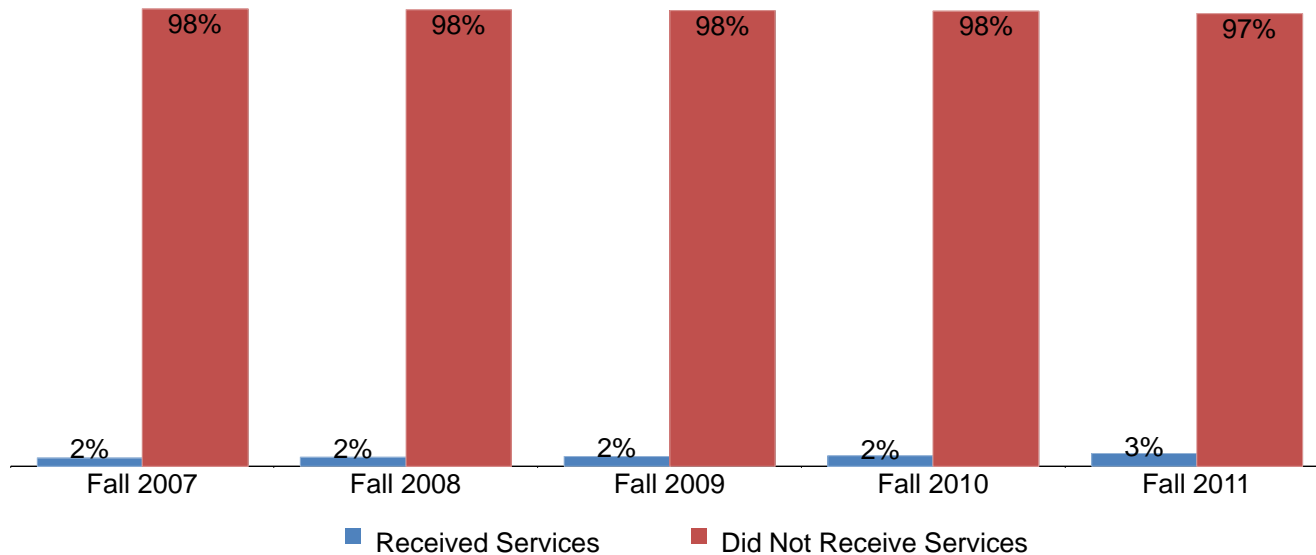


Table 1.12. Miramar College Headcount by Disability Support Programs and Services (DSPS)

	Fall 07		Fall 08		Fall 09		Fall 10		Fall 11		% Change Fall 07-11	College Average Fall 07-11	All Colleges Average Fall 07-11
Received Services	218	2%	234	2%	262	2%	292	2%	351	3%	61%	2%	3%
Did Not Receive Services	11,416	98%	11,692	98%	11,768	98%	12,198	98%	12,238	97%	7%	98%	97%
Unreported	6	0%	3	0%	0	0%	0	0%	0	0%	-100%	0%	0%
Total	11,640	100%	11,929	100%	12,030	100%	12,490	100%	12,589	100%	8%	100%	100%

Source: SDCCD Information System

Miramar College Fact Book 2012

Headcount by Extended Opportunity Programs and Services (EOPS): On average, 3% of the Miramar student population received EOPS services between Fall 2007 and Fall 2011. This was comparable to the percentage of students served by EOPS for all colleges in the district. Furthermore, students at Miramar who received and had not received EOPS services increased 13% and 8%, respectively, between Fall 2007 and Fall 2011.

Figure 1.13. Miramar College Headcount by Extended Opportunity Programs and Services (EOPS)

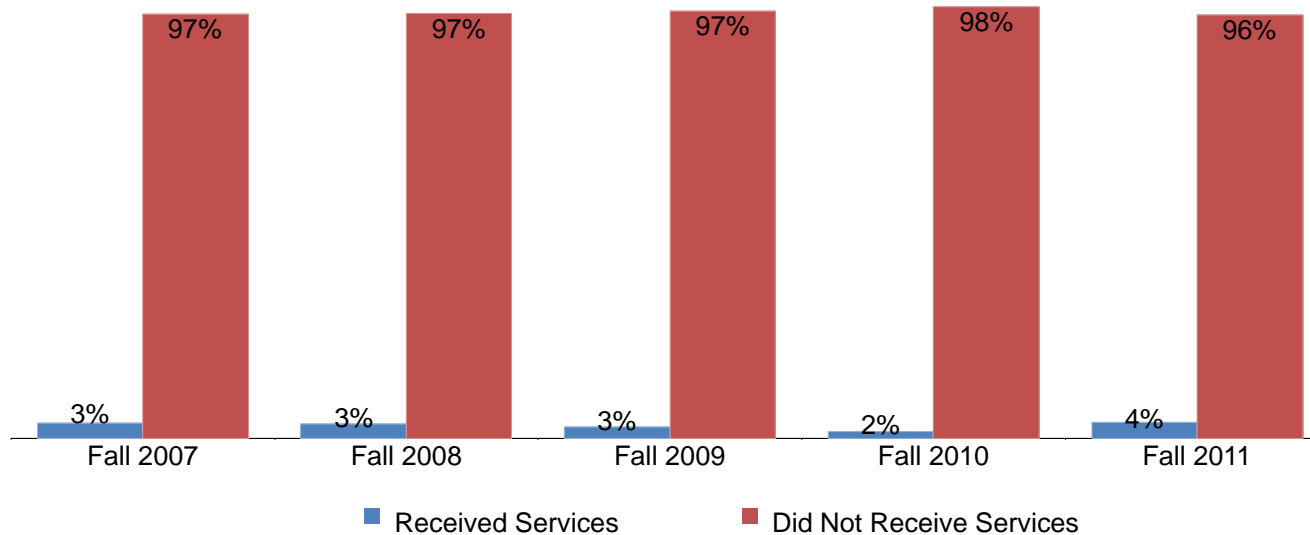


Table 1.13. City College Headcount by Extended Opportunity Programs and Services (EOPS)

	Fall 07		Fall 08		Fall 09		Fall 10		Fall 11		% Change Fall 07-11	College Average Fall 07-11	All Colleges Average Fall 07-11
Received Services	401	3%	393	3%	321	3%	205	2%	452	4%	13%	3%	3%
Did Not Receive Services	11,233	97%	11,533	97%	11,709	97%	12,285	98%	12,137	96%	8%	97%	97%
Unreported	6	0%	3	0%	0	0%	0	0%	0	0%	-100%	0%	0%
Total	11,640	100%	11,929	100%	12,030	100%	12,490	100%	12,589	100%	8%	100%	100%

Source: SDCCD Information System

Miramar College Fact Book 2012

Headcount by Day, Evening, & Online Status: On average, 40% of the Miramar student population takes day courses exclusively. Approximately one in five students (19%) takes online courses exclusively. Students that take evening courses exclusively decreased 36%, from 2,553 in Fall 2007 to 1,643 in Fall 2011. However, students that take online courses exclusively increased 40%, from 1,840 in Fall 2007 to 2,575 in Fall 2011.

Figure 1.14. Miramar College Headcount by Day, Evening, & Online Status

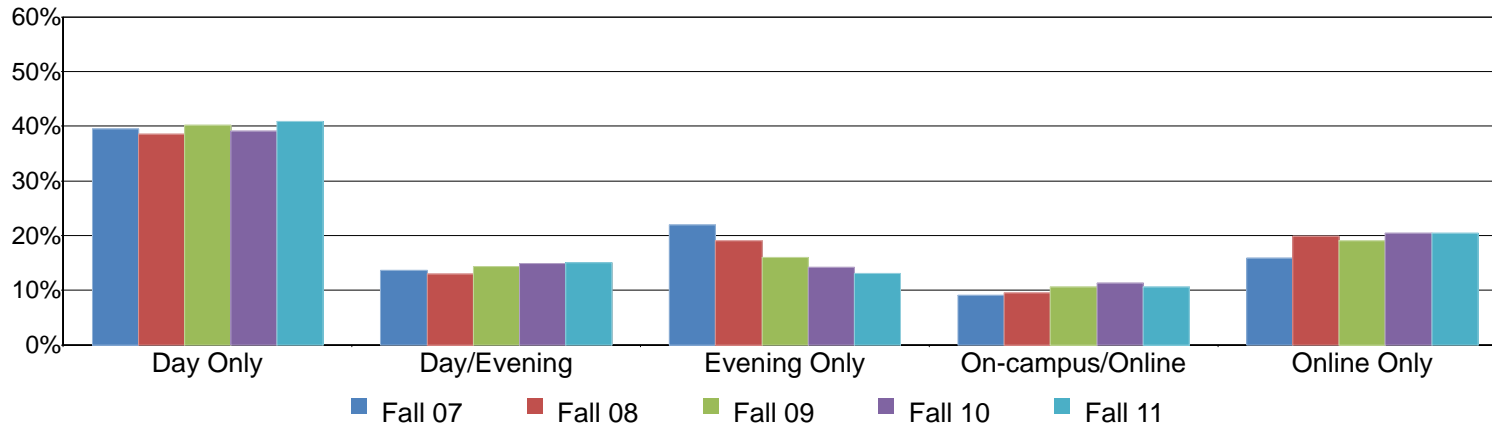


Table 1.14. Miramar College Headcount by Day, Evening, & Online Status

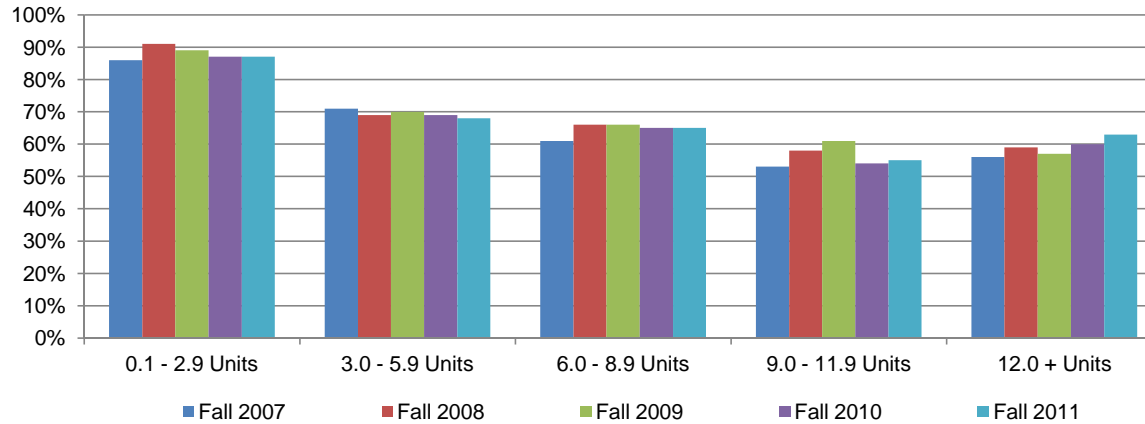
	Fall 07		Fall 08		Fall 09		Fall 10		Fall 11		% Change Fall 07-11	College Average Fall 07-11	All Colleges Average Fall 07-11
Day Only	4,602	40%	4,596	39%	4,838	40%	4,876	39%	5,142	41%	12%	40%	42%
Day/Evening	1,592	14%	1,548	13%	1,715	14%	1,864	15%	1,898	15%	19%	14%	20%
Evening Only	2,553	22%	2,273	19%	1,928	16%	1,778	14%	1,643	13%	-36%	17%	16%
On-campus/Online	1,053	9%	1,139	10%	1,267	11%	1,417	11%	1,331	11%	26%	10%	14%
Online Only	1,840	16%	2,373	20%	2,282	19%	2,555	20%	2,575	20%	40%	19%	8%
Total	11,640	100%	11,929	100%	12,030	100%	12,490	100%	12,589	100%	8%	100%	100%

Source: SDCCD Information System

Miramar College Fact Book 2012

Headcount by Units Attempted by Units Earned: Table 1.15 shows the interplay between units attempted (in rows) and units earned (in columns). The greatest proportion of students who attempted and earned units were those in the 0.1-2.9 unit range on average (88%). The least proportion of students who attempted and earned units were those in the 9.0-11.9 unit range on average (56%). Students who attempted and earned between 0.1 and 2.9 units increased 23% between Fall 2007 and Fall 2011.

Figure 1.15. Miramar College Headcount by Units Attempted by Units Earned



Miramar College Fact Book 2012

Table 1.15. Miramar College Headcount by Units Attempted by Units Earned

		Units Earned						
		0 Units	0.1 - 2.9 Units	3.0 - 5.9 Units	6.0 - 8.9 Units	9.0 - 11.9	12.0 + Units	
Units Attempted	Fall 2007	0.1 - 2.9 Units	14%	86%				
		3.0 - 5.9 Units	28%	1%	71%			
		6.0 - 8.9 Units	20%	1%	18%	61%		
		9.0 - 11.9 Units	14%	0%	14%	19%	53%	
		12.0 + Units	9%	1%	6%	11%	17%	56%
Fall 2008		0.1 - 2.9 Units	9%	91%				
		3.0 - 5.9 Units	30%	1%	69%			
		6.0 - 8.9 Units	18%	1%	16%	66%		
		9.0 - 11.9 Units	12%	1%	11%	18%	58%	
		12.0 + Units	6%	1%	6%	12%	17%	59%
Fall 2009		0.1 - 2.9 Units	11%	89%				
		3.0 - 5.9 Units	29%	1%	70%			
		6.0 - 8.9 Units	16%	1%	17%	66%		
		9.0 - 11.9 Units	11%	1%	11%	17%	61%	
		12.0 + Units	6%	1%	6%	10%	19%	57%
Fall 2010		0.1 - 2.9 Units	13%	87%				
		3.0 - 5.9 Units	30%	1%	69%			
		6.0 - 8.9 Units	17%	1%	17%	65%		
		9.0 - 11.9 Units	12%	1%	13%	21%	54%	
		12.0 + Units	7%	1%	6%	10%	16%	60%
Fall 2011		0.1 - 2.9 Units	13%	87%				
		3.0 - 5.9 Units	30%	1%	68%			
		6.0 - 8.9 Units	18%	1%	15%	65%		
		9.0 - 11.9 Units	11%	1%	12%	20%	55%	
		12.0 + Units	7%	1%	5%	9%	15%	63%
% Change Fall 07-11		--	23%	8%	12%	15%	4%	
College Average Fall 07-11		--	88%	70%	65%	56%	59%	

Source: SDCCD Information System

Note. Percent change and average were based on counts.

Section II
Term Persistence Rates

Miramar College Fact Book 2012

This section of the Fact Book contains information on first-time to college student term persistence rates. For purposes of this report, term persistence rate is the measure of first-time to college students who were enrolled in a fall term as of census (eliminating drops and never attends prior to census) and who completed the term with a grade of A, B, C, P (Pass), D, F, I, NP (Not-Pass), or RD (Report Delayed), then were enrolled as of census in the subsequent spring term and received a grade notation for that term. Note that SDSU and UCSD students and academy classes are excluded from analyses. The information in this section includes five years of data and is reported as follows:

- 1) Overall
- 2) Gender
- 3) Ethnicity
- 4) Age

Miramar College Fact Book 2012

Overall Term Persistence: The average term persistence rate of first-time Miramar students was 64% between the Fall 2007 and Fall 2011 cohorts. Persistence rates increased 8% between the Fall 2007 and Fall 2011 cohorts. The average term persistence rate of first-time Miramar students (64%) was lower compared to the average term persistence rate of first-time students enrolled in all colleges in the district (72%).

Figure 2.1. Miramar College First-Time Student Overall Term Persistence

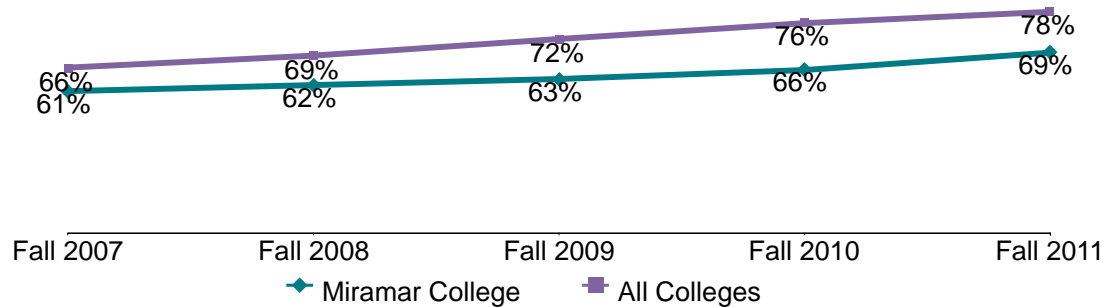


Table 2.1. Miramar College First-Time Student Overall Term Persistence

Cohort	Fall	Spring	Persistence	All Colleges Persistence Fall to Spring
Fall 2007	988	601	61%	66%
Fall 2008	971	604	62%	69%
Fall 2009	956	607	63%	72%
Fall 2010	1,008	661	66%	76%
Fall 2011	1,128	782	69%	78%
Average			64%	72%

Source: SDCCD Information System

Note 1. SDSU and UCSD students are excluded.

Note 2. Academy courses are excluded.

Miramar College Fact Book 2012

Term Persistence by Gender: On average, term persistence rates of female students (66%) were higher than their male student counterpart (63%) between the Fall 2007 and Fall 2011 cohorts. Persistence rates for both female and male students increased 4% and 11%, respectively, between the Fall 2007 and Fall 2011 cohorts.

Figure 2.2. Miramar College First-Time Student Term Persistence by Gender

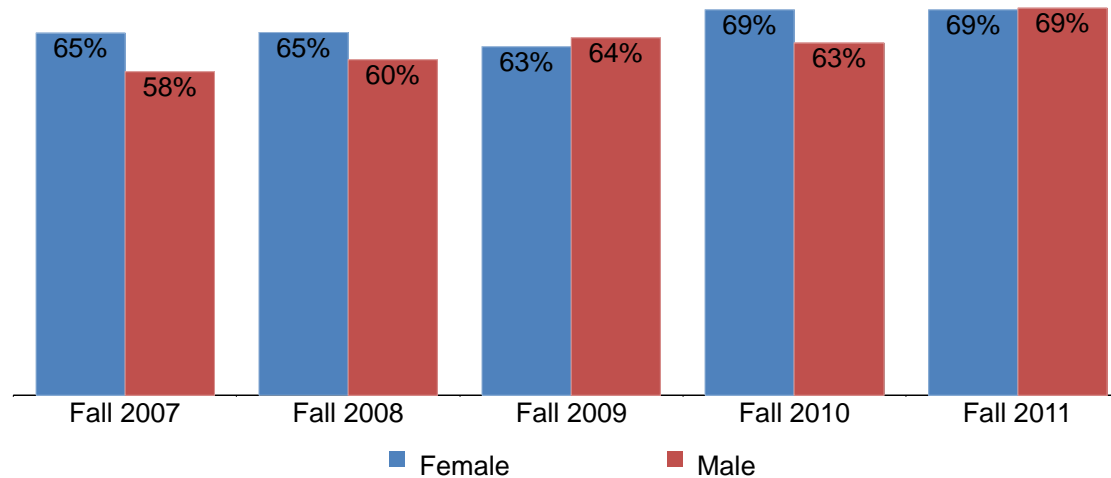


Table 2.2. Miramar College First-Time Student Term Persistence by Gender

Cohort	Female			Male		
	Fall	Spring	Persistence	Fall	Spring	Persistence
Fall 2007	389	253	65%	596	346	58%
Fall 2008	401	261	65%	570	343	60%
Fall 2009	414	259	63%	542	348	64%
Fall 2010	396	274	69%	612	387	63%
Fall 2011	473	327	69%	655	455	69%
Average			66%			63%

Source: SDCCD Information System

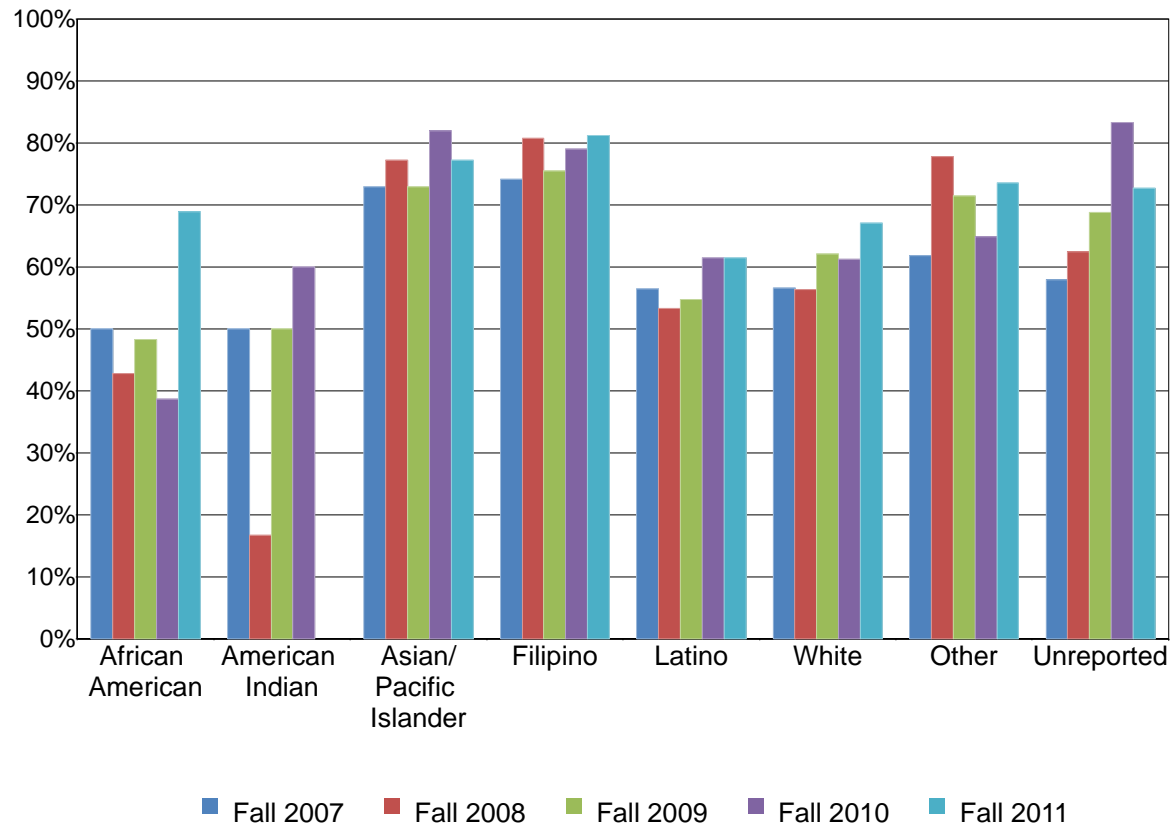
Note 1. SDSU and UCSD students are excluded.

Note 2. Academy courses are excluded.

Miramar College Fact Book 2012

Term Persistence by Ethnicity: The ethnic groups with the highest term persistence rates, on average, were Filipino students (78%), Asian/Pacific Islander students (76%), and students who were categorized as ‘Other’ ethnicities (69%). Persistence rates peaked to a high of 82% for Asian/Pacific Islander students in the Fall 2010 cohort. Between the Fall 2007 and Fall 2011 cohorts, persistence rates of African American students increased 19%.

Figure 2.3. Miramar College First-Time Student Term Persistence by Ethnicity



Miramar College Fact Book 2012

Table 2.3. Miramar College First-Time Student Term Persistence by Ethnicity

Cohort	African American			American Indian			Asian/Pacific Islander			Filipino		
	Fall	Spring	Persistence	Fall	Spring	Persistence	Fall	Spring	Persistence	Fall	Spring	Persistence
Fall 2007	58	29	50%	14	7	50%	148	108	73%	112	83	74%
Fall 2008	56	24	43%	6	1	17%	171	132	77%	109	88	81%
Fall 2009	60	29	48%	4	2	50%	144	105	73%	110	83	75%
Fall 2010	44	17	39%	5	3	60%	133	109	82%	105	83	79%
Fall 2011	58	40	69%	2	0	0%	193	149	77%	112	91	81%
Average			50%			42%			76%			78%

Cohort	Latino			White			Other			Unreported		
	Fall	Spring	Persistence	Fall	Spring	Persistence	Fall	Spring	Persistence	Fall	Spring	Persistence
Fall 2007	170	96	56%	387	219	57%	42	26	62%	57	33	58%
Fall 2008	167	89	53%	371	209	56%	27	21	78%	64	40	63%
Fall 2009	210	115	55%	338	210	62%	42	30	71%	48	33	69%
Fall 2010	234	144	62%	395	242	61%	74	48	65%	18	15	83%
Fall 2011	291	179	62%	374	251	67%	87	64	74%	11	8	73%
Average			58%			61%			69%			65%

Source: SDCCD Information System

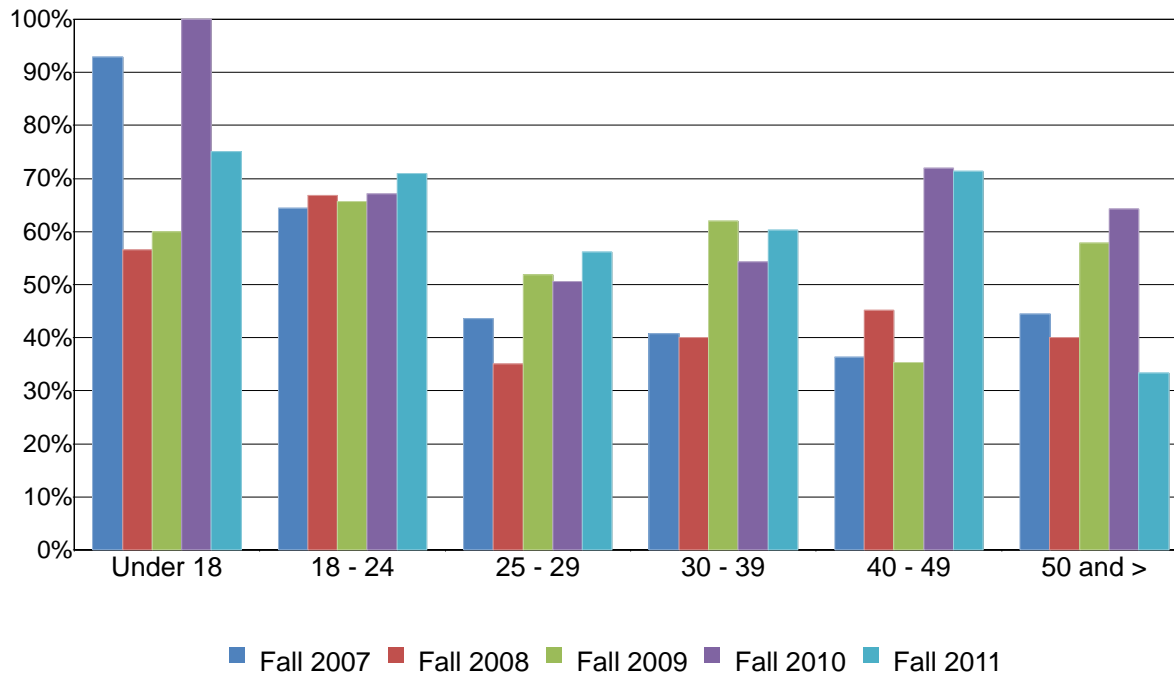
Note 1. SDSU and UCSD students are excluded.

Note 2. Academy courses are excluded.

Miramar College Fact Book 2012

Term Persistence by Age: From the Fall 2007 cohort to the Fall 2011 cohort, term persistence rates were the highest for students under age 18 (75%), followed by students between ages 18 and 24 (67%), and for students between ages 40 and 49 (54%) on average. For students under age 18, persistence rates peaked to a high of 100% in the Fall 2010 cohort. Persistence rates for students between ages 40 and 49 increased 35%, from 36% in the Fall 2007 cohort to 71% in the Fall 2011 cohort. However, students under age 18 displayed an 18% decrease in persistence rates between the Fall 2007 and Fall 2011 cohorts.

Figure 2.4. Miramar College First-Time Student Term Persistence by Age



Miramar College Fact Book 2012

Table 2.4. Miramar College First-Time Student Term Persistence by Age

Cohort	Under 18			18 - 24			25 - 29		
	Fall	Spring	Persistence	Fall	Spring	Persistence	Fall	Spring	Persistence
Fall 2007	14	13	93%	802	516	64%	78	34	44%
Fall 2008	23	13	57%	797	532	67%	60	21	35%
Fall 2009	10	6	60%	764	502	66%	83	43	52%
Fall 2010	14	14	100%	817	548	67%	79	40	51%
Fall 2011	8	6	75%	957	679	71%	66	37	56%
Average			75%			67%			48%

Cohort	30 - 39			40 - 49			50 and >		
	Fall	Spring	Persistence	Fall	Spring	Persistence	Fall	Spring	Persistence
Fall 2007	54	22	41%	22	8	36%	18	8	44%
Fall 2008	50	20	40%	31	14	45%	10	4	40%
Fall 2009	63	39	62%	17	6	35%	19	11	58%
Fall 2010	59	32	54%	25	18	72%	14	9	64%
Fall 2011	63	38	60%	28	20	71%	6	2	33%
Average			52%			54%			51%

Source: SDCCD Information System

Note 1. SDSU and UCSD students are excluded.

Note 2. Academy courses are excluded.

Section III
Student Outcomes

Miramar College Fact Book 2012

This section of the Fact Book contains information on various student outcomes which may be considered indirect assessments of student learning. The outcomes included in this section are: 1) Annual Successful Course Completion Rates, 2) Annual Retention Rates, 3) Annual GPA, 4) Annual Awards Conferred, and 5) Annual Transfer Volume. All of the information in this section includes five years of data by gender, age, and ethnicity. The following describes in detail each of the outcomes listed.

1) Successful Course Completion Rates. The first outcome reported in this section is successful course completion, or student success rate. For purposes of this report, the success rate is the percentage of students who completed a course with a grade of A, B, C, or P out of total enrollments as of census. *Note: Tutoring, non-credit, and cancelled classes are excluded.*

2) Retention Rates. The second outcome reported in this section is retention rate. For purposes of this report, the retention rate is the percentage of students who completed a course with a grade of A, B, C, D, F, P, NP, I, or RD out of total enrollments as of census. *Note: Tutoring and cancelled classes are excluded.*

3) Annual GPA. The third outcome reported in this section is annual GPA. For purposes of this report, the annual GPA is the cumulative term grade point average of all courses taken for a grade in one academic year.

4) Annual Awards Conferred. The fourth outcome reported in this section is the annual awards conferred. For purposes of this report, the annual awards conferred are the total number of associate degrees and certificates awarded in a single academic year (summer, fall, and spring). *Note: Annual awards conferred that are reported in this Fact Book are considered preliminary data. Please see the upcoming Awards Conferred Supplement report for final annual awards conferred numbers.*

5) Annual Transfer Volume. The last outcome reported in this section is the number of students who transfer annually. For the purposes of this report, the annual transfer volume represents the total number of students who transferred to a 4-year institution and were enrolled at an SDCCD college at any time within three semesters prior to transferring (including stop outs). The student must also have completed 12 or more transferrable units within six years prior to transferring to a 4-year institution. *Note: Transfer volume that is reported in this Fact Book is considered preliminary data. Please see the upcoming Spring 2013 SDCCD Transfer Report: A Longitudinal Perspective for final transfer volume numbers.*

Miramar College Fact Book 2012

Overall Success Rates: Miramar College annual success rates remained relatively stable from 2008/09 to 2011/12, with an average of 72%. This success rate average was higher than the success rate average of all colleges in the district (67%). The Miramar College annual success rates were higher, on average, compared to the annual success rates of all colleges in the district between 2007/08 and 2011/12.

Figure 3.1. Miramar College Overall Success Rates

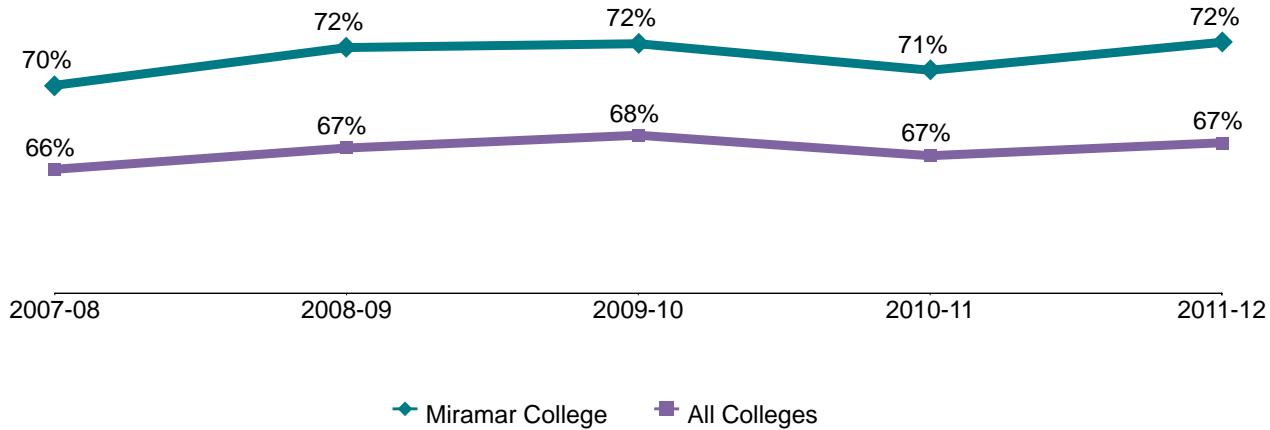


Table 3.1. Miramar College Overall Success Rates

	2007-08	2008-09	2009-10	2010-11	2011-12	% Change 07/08 - 11/12	College Average 07/08 - 11/12	All Colleges Average 07/08 - 11/12
Average	70%	72%	72%	71%	72%	2%	72%	67%

Source: SDCCD Information System

Note. Tutoring, non-credit, and cancelled classes are excluded.

Miramar College Fact Book 2012

Success Rates by Gender: On average, male student success rates (72%) were comparable to their female student counterpart (71%) between 2007/08 and 2011/12. At Miramar College, both male and female students had higher average success rates compared to the average success rates of the male and female student populations of all colleges in the district (67% & 68%, respectively). Both male and female students at Miramar College had average success rates comparable to the average success rate of the general student population at Miramar (72%). However, these rates exceeded the all colleges in the district general student population average success rate of 67%.

Figure 3.2. Miramar College Success Rates by Gender

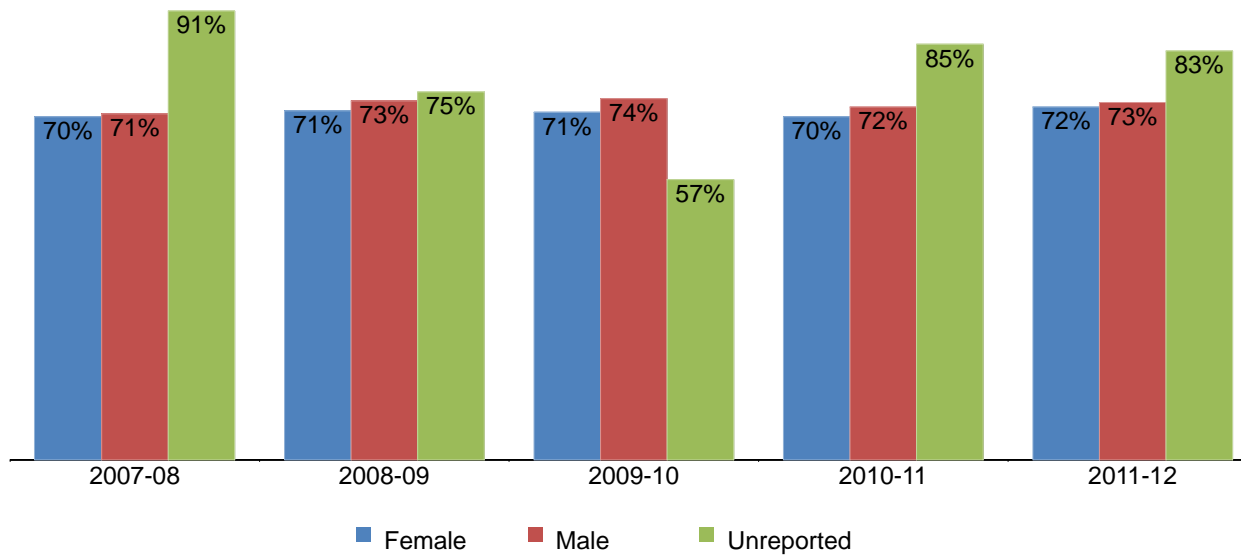


Table 3.2. Miramar College Success Rates by Gender

	2007-08	2008-09	2009-10	2010-11	2011-12	% Change 07/08 - 11/12	College Average 07/08 - 11/12	All Colleges Average 07/08 - 11/12
Female	70%	71%	71%	70%	72%	2%	71%	68%
Male	71%	73%	74%	72%	73%	2%	72%	67%
Unreported	91%	75%	57%	85%	83%	-8%	87%	77%
Average	70%	72%	72%	71%	72%	2%	72%	67%

Source: SDCCD Information System

Note. Tutoring, non-credit, and cancelled classes are excluded.

Miramar College Fact Book 2012

Success Rates by Ethnicity: On average, the ethnic groups with the highest success rates between 2007/08 and 2011/12 were White students (75%) and Asian/Pacific Islanders students (73%). The average success rate of African American (58%) students was lower compared to the average success rates of both the general student populations at Miramar College (72%) and all colleges in the district (67%). The average success rates of Asian/Pacific Islander and White students exceeded the same averages. The average success rates of American Indian, Filipino, Latino and students categorized as 'Other' ethnicities were comparable to or higher than the average success rate of the general student population for all colleges in the district, while the same averages were lower than the average success rate of the general student population at Miramar.

Figure 3.3. Miramar College Success Rates by Ethnicity

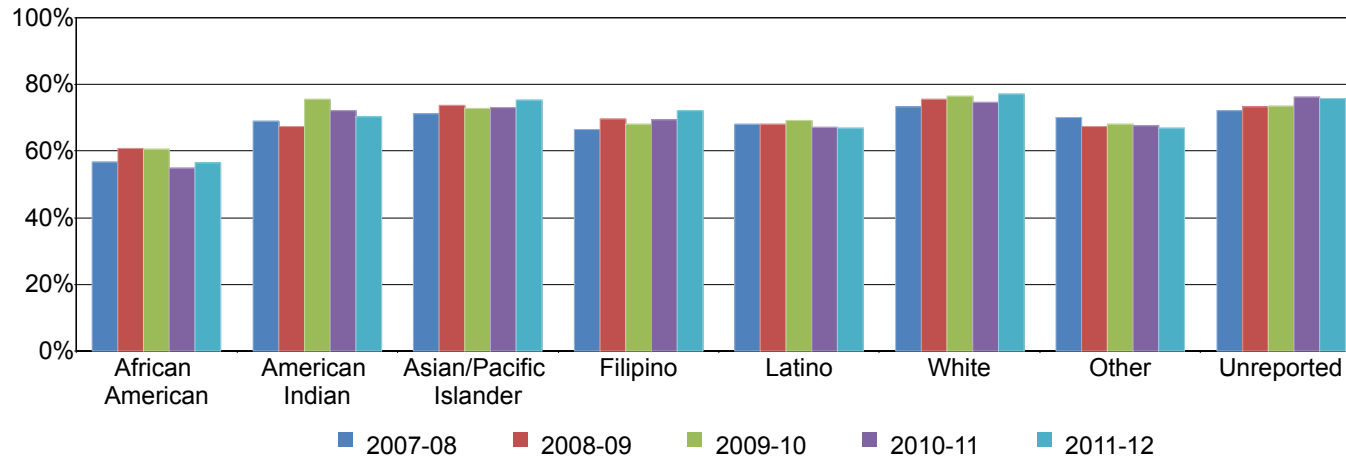


Table 3.3. Miramar College Success Rates by Ethnicity

	2007-08	2008-09	2009-10	2010-11	2011-12	% Change 07/08 - 11/12	College Average 07/08 - 11/12	All Colleges Average 07/08 - 11/12
African American	57%	61%	61%	55%	57%	0%	58%	55%
American Indian	69%	67%	76%	72%	70%	1%	71%	65%
Asian/Pacific Islander	71%	74%	73%	73%	75%	4%	73%	72%
Filipino	66%	70%	68%	69%	72%	6%	69%	68%
Latino	68%	68%	69%	67%	67%	-1%	68%	62%
White	73%	76%	76%	75%	77%	4%	75%	72%
Other	70%	67%	68%	67%	67%	-3%	68%	66%
Unreported	72%	73%	74%	76%	76%	4%	74%	69%
Average	70%	72%	72%	71%	72%	2%	72%	67%

Source: SDCCD Information System

Note. Tutoring, non-credit, and cancelled classes are excluded.

Miramar College Fact Book 2012

Success Rates by Age: With the exception of students who were under age 18, a general trend between 2007/08 and 2011/12 showed as age increased so did the average success rates. Students under age 18 had the highest success rate on average (86%). The average success rates of most age groups were higher than the average success rates of both the general student populations at Miramar College (72%) and all colleges in the district (67%).

Figure 3.4. Miramar College Success Rates by Age

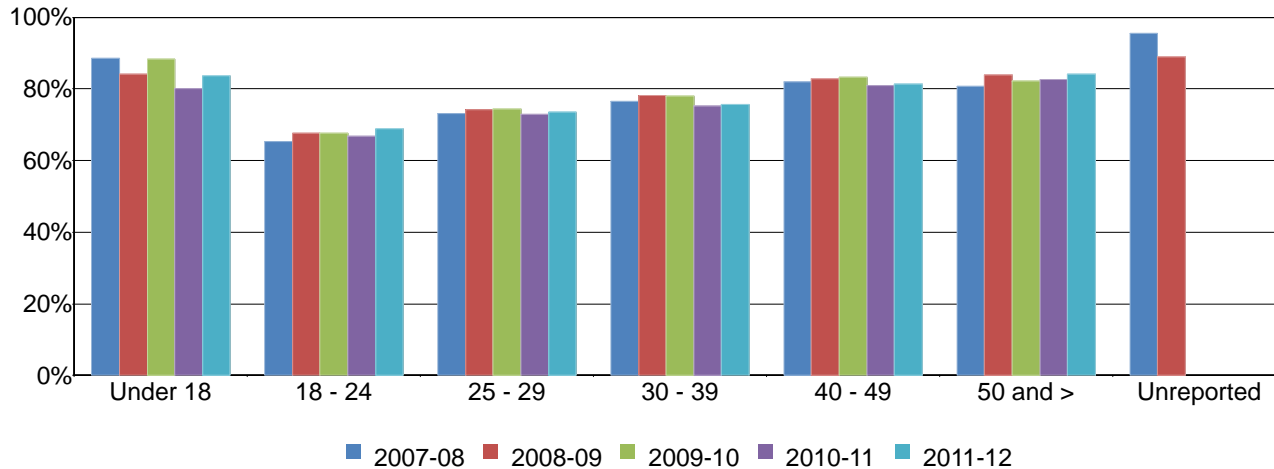


Table 3.4. Miramar College Success Rates by Age

	2007-08	2008-09	2009-10	2010-11	2011-12	% Change 07/08 - 11/12	College Average 07/08 - 11/12	All Colleges Average 07/08 - 11/12
Under 18	88%	84%	88%	80%	84%	-5%	86%	85%
18 - 24	65%	68%	68%	67%	69%	3%	67%	64%
25 - 29	73%	74%	74%	73%	73%	0%	74%	69%
30 - 39	76%	78%	78%	75%	76%	-1%	77%	71%
40 - 49	82%	83%	83%	81%	81%	-1%	82%	73%
50 and >	81%	84%	82%	83%	84%	3%	83%	73%
Unreported	96%	89%	---	---	---	---	---	81%
Average	70%	72%	72%	71%	72%	2%	72%	67%

Source: SDCCD Information System

Note. Tutoring, non-credit, and cancelled classes are excluded.

Miramar College Fact Book 2012

Overall Retention Rates: The annual retention rates of Miramar College showed a 3% increase between 2007/08 and 2011/12, with an average of 86%. This retention rate average was higher compared to the retention rate average of all colleges in the district (84%). The Miramar College annual retention rates were higher, on average, compared to the annual retention rates of all colleges in the district between 2007/08 and 2011/12.

Figure 3.5. Miramar College Overall Retention Rates

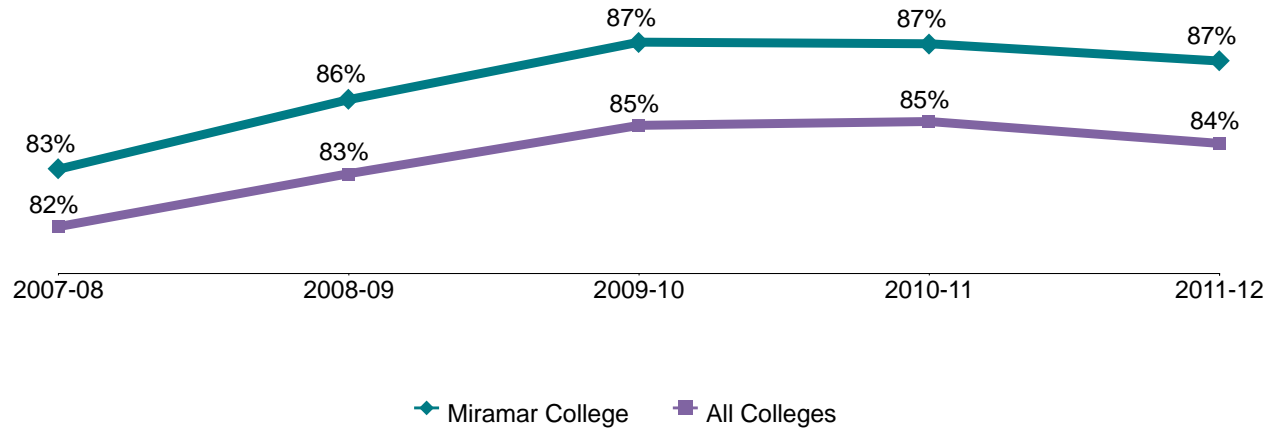


Table 3.5. Miramar College Overall Retention Rates

	2007-08	2008-09	2009-10	2010-11	2011-12	% Change 07/08 - 11/12	College Average 07/08 - 11/12	All Colleges Average 07/08 - 11/12
Average	83%	86%	87%	87%	87%	3%	86%	84%

Source: SDCCD Information System

Note. Tutoring and cancelled classes are excluded.

Miramar College Fact Book 2012

Retention Rates by Gender: On average, male student retention rates (87%) were slightly higher than their female student counterpart (85%) between 2007/08 and 2011/12. The average retention rates of both male and female students at Miramar College were higher than the average retention rates of the male and female student populations of all colleges in the district (84% each). Both male and female students at Miramar College had average retention rates comparable to the average retention rate of the general student population at Miramar (86%). Between 2007/08 and 2011/12, the average retention rates of both the male and female student populations at Miramar College were higher than the average retention rate of the general student population of all colleges in the district (84%).

Figure 3.6. Miramar College Retention Rates by Gender

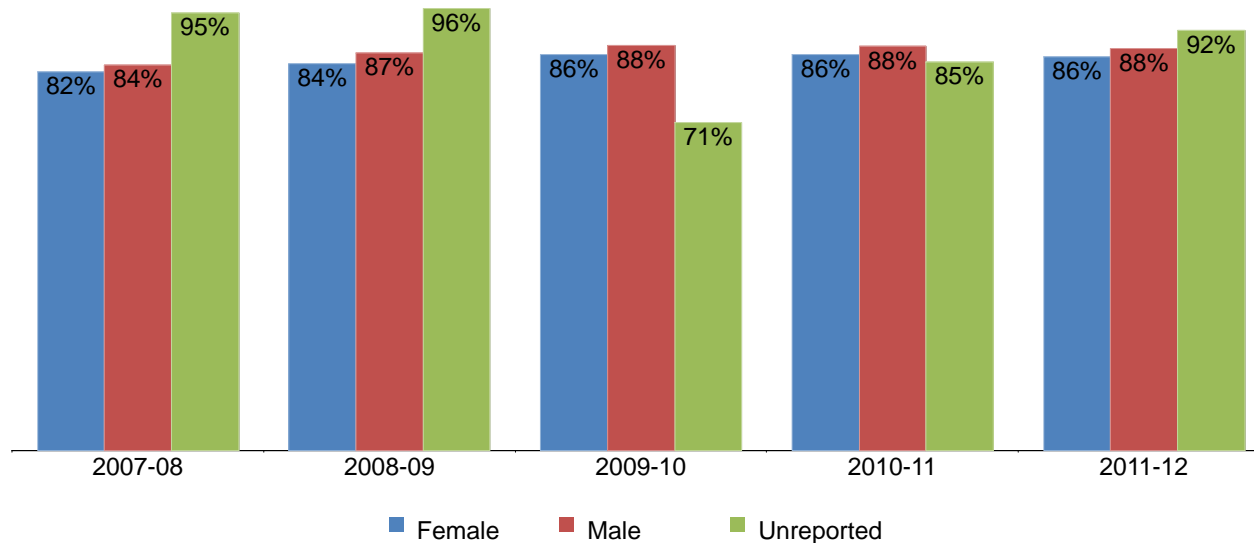


Table 3.6. Miramar College Retention Rates by Gender

	2007-08	2008-09	2009-10	2010-11	2011-12	% Change 07/08 - 11/12	College Average 07/08 - 11/12	All Colleges Average 07/08 - 11/12
Female	82%	84%	86%	86%	86%	3%	85%	84%
Male	84%	87%	88%	88%	88%	4%	87%	84%
Unreported	95%	96%	71%	85%	92%	-4%	94%	89%
Average	83%	86%	87%	87%	87%	3%	86%	84%

Source: SDCCD Information System

Note. Tutoring and cancelled classes are excluded.

Miramar College Fact Book 2012

Retention Rates by Ethnicity: The ethnic groups with the highest retention rates, on average, were both Asian/Pacific Islander and American Indian (86% each) as well as White students (87%). The average retention rate of African American students (82%) was lower than the average retention rates of both the general student populations at Miramar College (86%) and all colleges in the district (84%). The average retention rates of Filipino, Latino, and students categorized as ‘Other’ ethnicities were lower than the average retention rate of the Miramar College general student population, while were higher than the average retention rate of the general student population of all colleges in the district. The average retention rates of Asian/Pacific Islander, American Indian, and White students were comparable to or exceeded the same averages.

Figure 3.7. Miramar College Retention Rates by Ethnicity

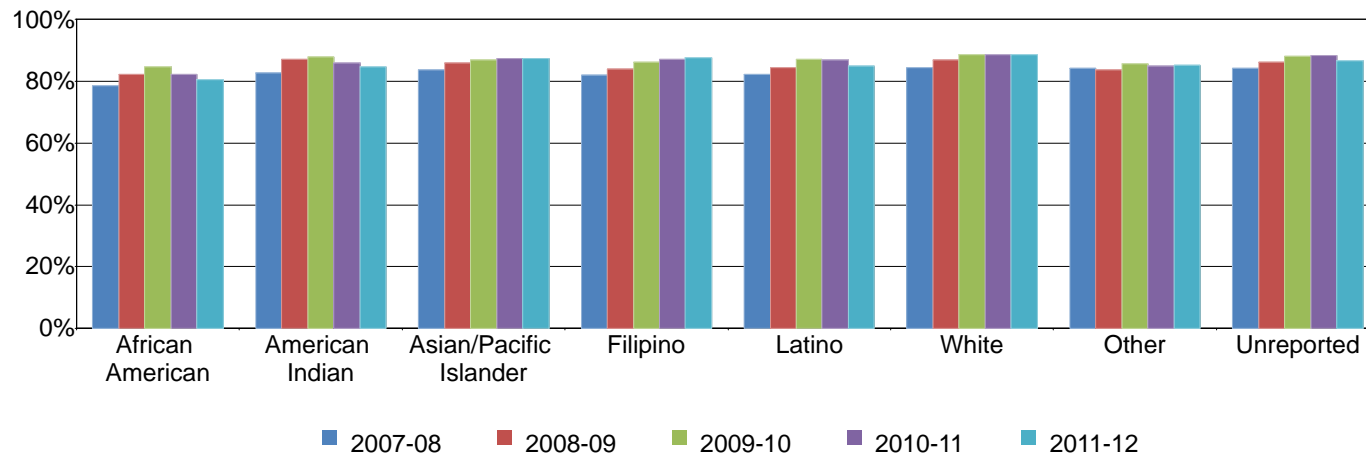


Table 3.7. Miramar College Retention Rates by Ethnicity

	2007-08	2008-09	2009-10	2010-11	2011-12	% Change 07/08 - 11/12	College Average 07/08 - 11/12	All Colleges Average 07/08 - 11/12
African American	79%	82%	85%	82%	81%	2%	82%	79%
American Indian	83%	87%	88%	86%	85%	2%	86%	81%
Asian/Pacific Islander	84%	86%	87%	87%	88%	4%	86%	86%
Filipino	82%	84%	86%	87%	88%	6%	85%	84%
Latino	82%	84%	87%	87%	85%	3%	85%	83%
White	84%	87%	89%	89%	89%	4%	87%	85%
Other	84%	84%	86%	85%	85%	1%	85%	84%
Unreported	84%	86%	88%	88%	87%	3%	87%	83%
Average	83%	86%	87%	87%	87%	3%	86%	84%

Source: SDCCD Information System

Note. Tutoring and cancelled classes are excluded.

Miramar College Fact Book 2012

Retention Rates by Age: With the exception of students under age 18, a general trend between 2007/08 and 2011/12 showed as age increased, so did the average retention rates. The average retention rates of most of the age groups were comparable to or higher than the average retention rates of both the general student populations at Miramar College (86%) and all colleges in the district (84%). The average retention rate of students between ages 18 and 29 years old (85% & 86%, respectively) was lower than or comparable to the average retention rate of the general student population at Miramar College (86%), while was higher than the retention rate of the general student population of all colleges in the district (84%).

Figure 3.8. Miramar College Retention Rates by Age

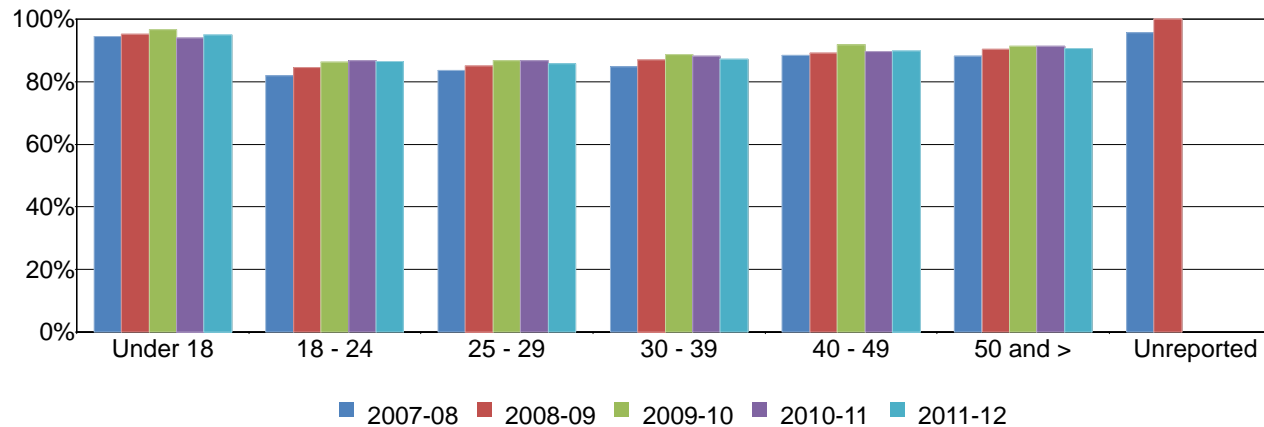


Table 3.8. Miramar College Retention Rates by Age

	2007-08	2008-09	2009-10	2010-11	2011-12	% Change 07/08 - 11/12	College Average 07/08 - 11/12	All Colleges Average 07/08 - 11/12
Under 18	94%	95%	96%	94%	95%	1%	95%	95%
18 - 24	82%	85%	86%	87%	86%	5%	85%	84%
25 - 29	84%	85%	87%	87%	86%	2%	86%	83%
30 - 39	85%	87%	89%	88%	87%	2%	87%	84%
40 - 49	88%	89%	92%	90%	90%	1%	90%	84%
50 and >	88%	90%	91%	91%	91%	3%	90%	84%
Unreported	96%	100%	---	---	---	---	---	91%
Average	83%	86%	87%	87%	87%	3%	86%	84%

Source: SDCCD Information System

Note. Tutoring and cancelled classes are excluded.

Miramar College Fact Book 2012

Overall Annual GPA: The annual GPAs for Miramar College showed a slight decline, from 2.83 in 2007/08 to 2.69 in 2010/11, and rebounded upward to 2.75 in 2011/12, with an average of 2.76. Miramar’s collegewide annual GPA average was higher than the annual GPA average of all colleges in the district (2.65). The Miramar College annual GPAs were higher, on average, compared to the annual GPAs of all colleges in the district between 2007/08 and 2011/12.

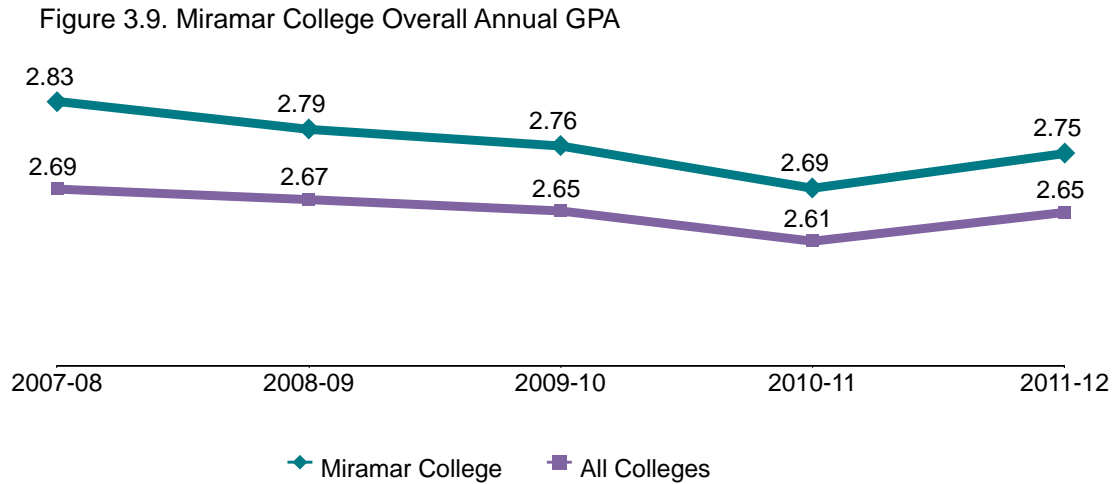


Table 3.9. Miramar College Overall Annual GPA

	2007-08	2008-09	2009-10	2010-11	2011-12	College Average 07/08 - 11/12	All Colleges Average 07/08 - 11/12
Average	2.83	2.79	2.76	2.69	2.75	2.76	2.65

Source: SDCCD Information System

Miramar College Fact Book 2012

Annual GPA by Gender: Between 2007/08 and 2011/12, male students, on average, had slightly lower GPAs compared to their female student counterpart (2.75 & 2.78, respectively). The average annual GPA of both male and female students at Miramar College were higher compared to the average annual GPA of the male and female student populations of all colleges in the district (2.61 & 2.69, respectively). The average annual GPA of the female student population at Miramar was slightly higher than the average annual GPA of the Miramar College general student population (2.76) and the average annual GPA of the general student population of all colleges in the district (2.65). The average annual GPA of male students at Miramar College was comparable to or exceeded the same averages.

Figure 3.10. Miramar College Annual GPA by Gender

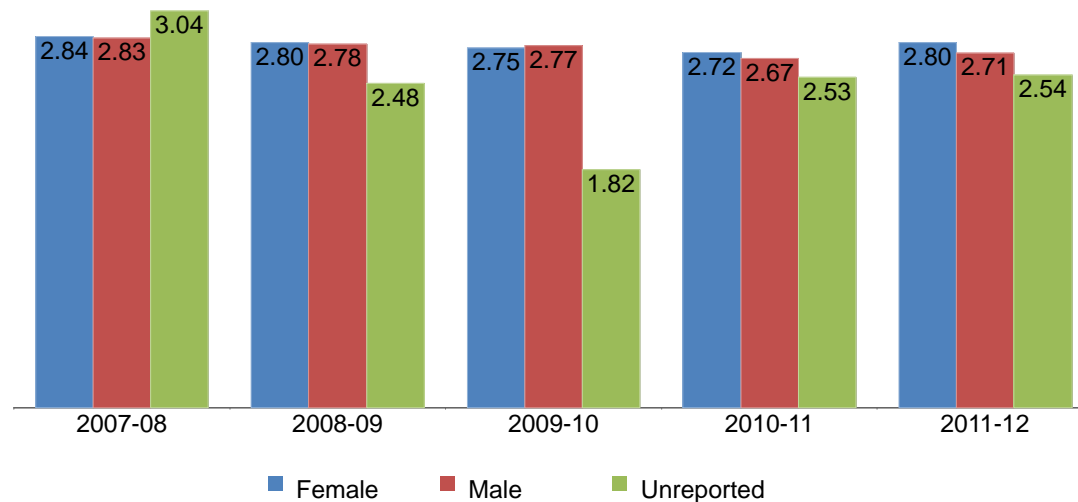


Table 3.10. Miramar College Annual GPA by Gender

	2007-08	2008-09	2009-10	2010-11	2011-12	College Average 07/08 - 11/12	All Colleges Average 07/08 - 11/12
Female	2.84	2.80	2.75	2.72	2.80	2.78	2.69
Male	2.83	2.78	2.77	2.67	2.71	2.75	2.61
Unreported	3.04	2.48	1.82	2.53	2.54	2.78	2.76
Average	2.83	2.79	2.76	2.69	2.75	2.76	2.65

Source: SDCCD Information System

Miramar College Fact Book 2012

Annual GPA by Ethnicity: Both Asian/Pacific Islander and White students had the highest GPAs (2.81 & 2.93, respectively) on average between 2007/08 and 2011/12. The average annual GPA of American Indian students (2.75) was slightly lower than the average annual GPA of Miramar College's general student population (2.76), however, was higher compared to the average annual GPA of the general student population of all colleges in the district (2.65). The average annual GPAs of African American, Filipino, Latino, and students categorized as 'Other' ethnicities were lower than the average annual GPAs of both the general student populations at Miramar College and all colleges in the district. The average annual GPAs of Asian/Pacific Islander and White students exceeded the same averages.

Figure 3.11. Miramar College Annual GPA by Ethnicity

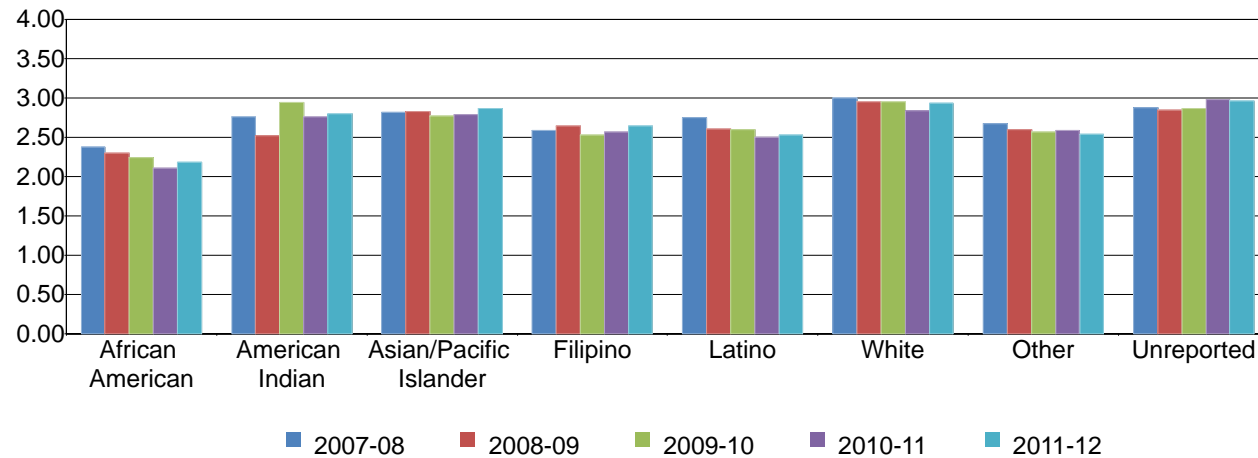


Table 3.11. Miramar College Annual GPA by Ethnicity

	2007-08	2008-09	2009-10	2010-11	2011-12	College Average 07/08 - 11/12	All Colleges Average 07/08 - 11/12
African American	2.37	2.29	2.24	2.10	2.18	2.23	2.21
American Indian	2.76	2.51	2.94	2.76	2.79	2.75	2.61
Asian/Pacific Islander	2.81	2.82	2.77	2.78	2.86	2.81	2.82
Filipino	2.58	2.64	2.53	2.57	2.64	2.59	2.62
Latino	2.75	2.60	2.59	2.49	2.52	2.58	2.41
White	3.00	2.95	2.95	2.83	2.93	2.93	2.87
Other	2.67	2.60	2.56	2.58	2.54	2.58	2.58
Unreported	2.87	2.84	2.86	2.98	2.96	2.89	2.81
Average	2.83	2.79	2.76	2.69	2.75	2.76	2.65

Source: SDCCD Information System

Miramar College Fact Book 2012

Annual GPA by Age: With the exception of students under age 18, a general trend between 2007/08 and 2011/12 showed as age increased, so did the average GPAs. The average annual GPA of students who were ages 18-24 years old (2.55) was lower than the average annual GPAs of both the general student populations at Miramar College and all colleges in the district (2.76 & 2.65, respectively). The average annual GPAs of all other age groups exceeded the same averages.

Figure 3.12. Miramar College Annual GPA by Age

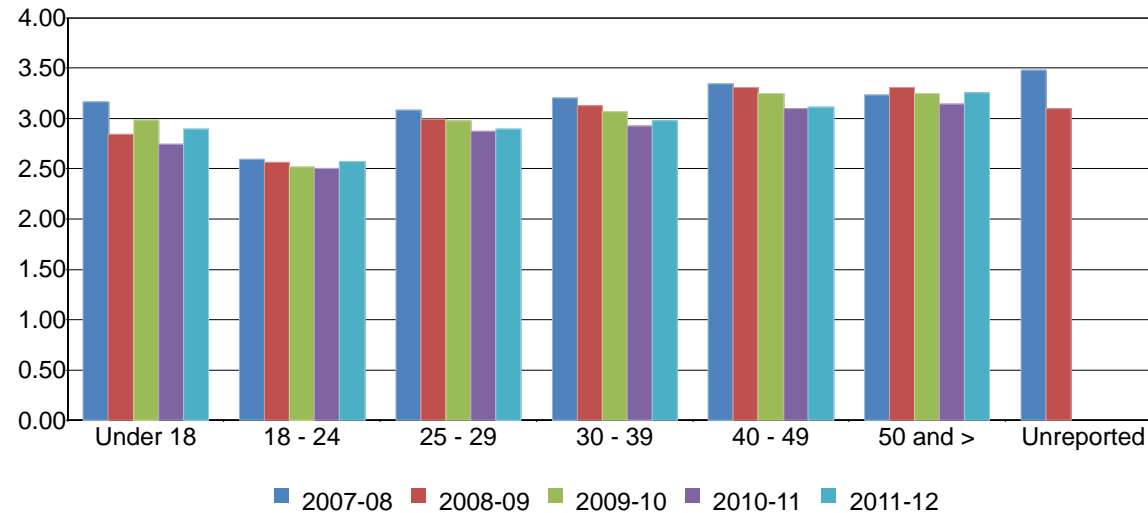


Table 3.12. Miramar College Annual GPA by Age

	2007-08	2008-09	2009-10	2010-11	2011-12	College Average 07/08 - 11/12	All Colleges Average 07/08 - 11/12
Under 18	3.16	2.84	2.98	2.74	2.90	2.95	3.02
18 - 24	2.59	2.57	2.52	2.50	2.57	2.55	2.47
25 - 29	3.08	3.00	2.98	2.87	2.90	2.96	2.85
30 - 39	3.20	3.13	3.07	2.92	2.98	3.05	2.93
40 - 49	3.34	3.30	3.25	3.10	3.11	3.22	3.01
50 and >	3.23	3.30	3.25	3.14	3.26	3.23	3.08
Unreported	3.48	3.10	---	---	---	---	3.03
Average	2.83	2.79	2.76	2.69	2.75	2.76	2.65

Source: SDCCD Information System

Miramar College Fact Book 2012

Annual Awards Conferred: On average, 58% of the total awards conferred at Miramar College were associate degrees. The number of certificates requiring 30 to 59 units showed the greatest increase of 76%, from 123 in 2007/08 to 216 in 2011/12. In contrast, the number of awarded certificates that require 29 or fewer units decreased 27%, from 232 in 2007/08 to 169 in 2011/12. The number of associate degrees awarded at Miramar College, on average, was 8% less than the number of associate degrees conferred within all colleges in the district.

Figure 3.13. Miramar College Overall Annual Awards Conferred

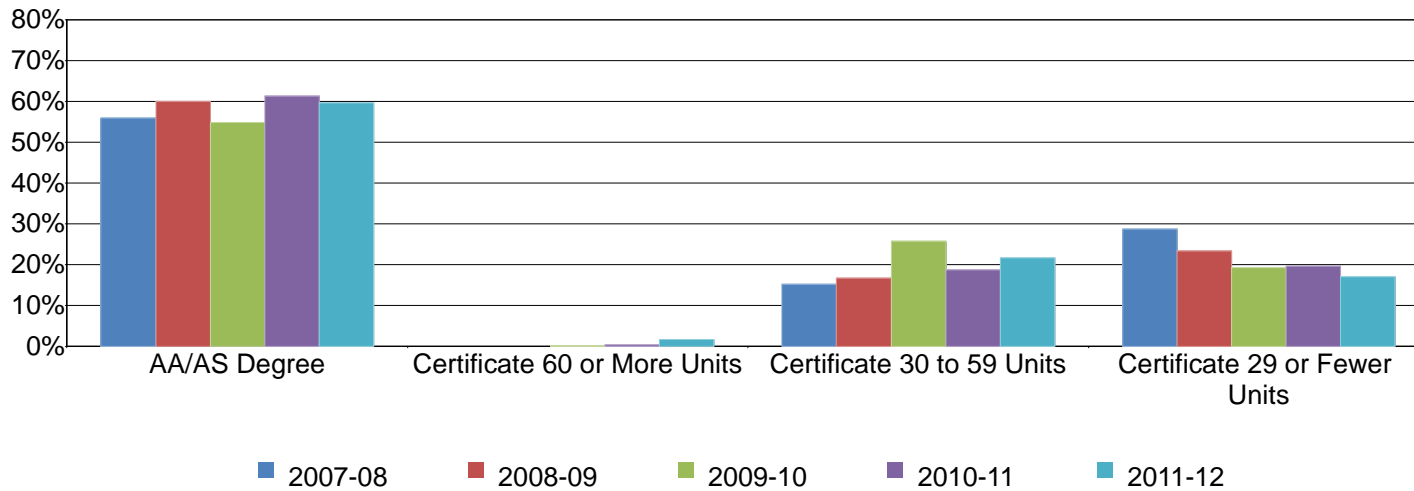


Table 3.13. Miramar College Overall Annual Awards Conferred

	2007-08		2008-09		2009-10		2010-11		2011-12		% Change 07/08-11/12	College Average 07/08-11/12	All Colleges Average 07/08-11/12
AA/AS Degree	452	56%	546	60%	579	55%	574	61%	594	60%	31%	58%	66%
Certificate 60 or More Units	0	0%	0	0%	2	0%	4	0%	16	2%	---	0%	0%
Certificate 30 to 59 Units	123	15%	152	17%	272	26%	176	19%	216	22%	76%	20%	17%
Certificate 29 or Fewer Units	232	29%	212	23%	203	19%	183	20%	169	17%	-27%	21%	17%
Total	807	100%	910	100%	1,056	100%	937	100%	995	100%	23%	100%	100%

Source: SDCCD Information System

Miramar College Fact Book 2012

Annual Awards Conferred by Gender: Of the total awards conferred at Miramar College, both male (51%) and female (49%) students, on average, received relatively the same amount of associate degrees between 2007/08 and 2011/12. Both male and female students displayed an increase in associate degrees awarded (44% & 19%, respectively) between 2007/08 and 2011/12. For certificates requiring 30 to 59 units, both male and female students showed an increased trend between 2007/08 and 2011/12 (112% & 22%, respectively). From 2007/08 to 2011/12, female students consistently earned a disproportionately low number of awards at Miramar College compared to the female student population of all colleges in the district. Male students exhibited the opposite pattern.

Figure 3.14.1. Miramar College Annual AA/AS Degrees by Gender

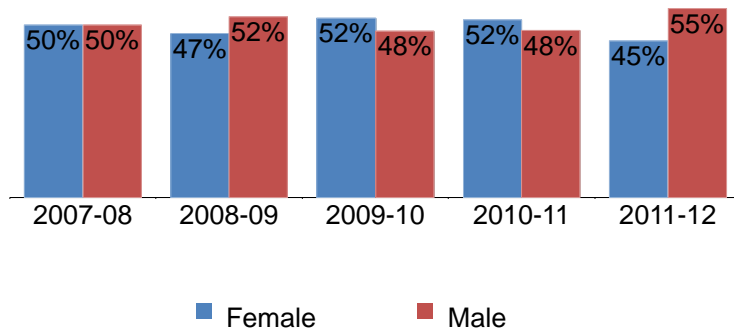


Figure 3.14.2. Miramar College Annual Certificates 60 or More Units by Gender

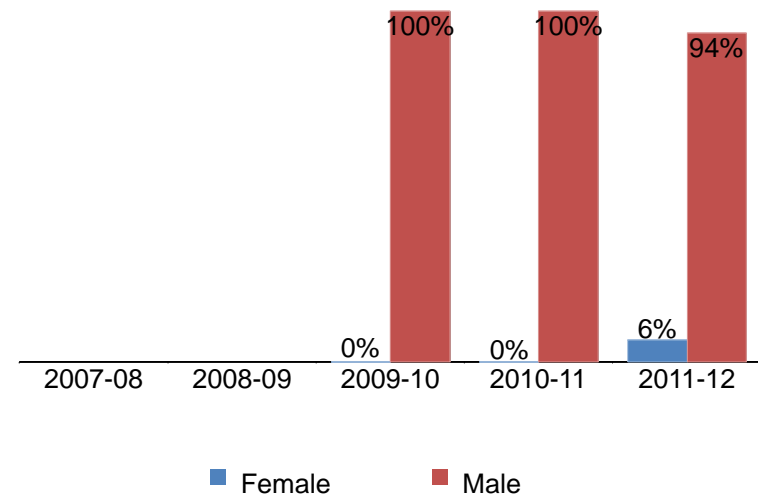


Figure 3.14.3. Miramar College Annual Certificates 30 to 59 Units by Gender

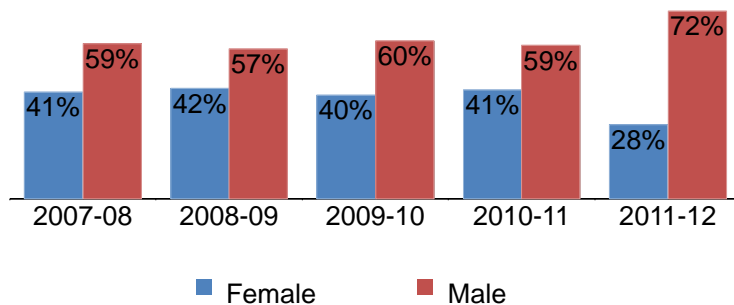
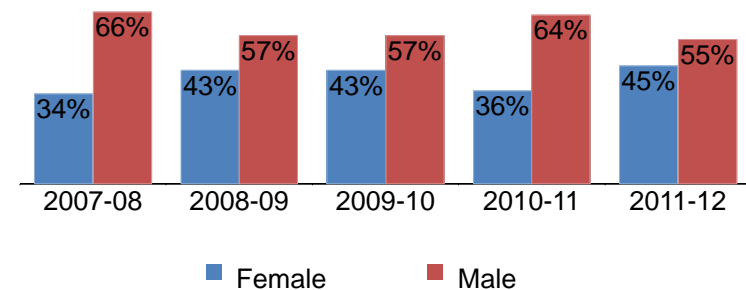


Figure 3.14.4. Miramar College Annual Certificates 29 or Fewer Units by Gender



Miramar College Fact Book 2012

Table 3.14. Miramar College Annual Awards Conferred by Gender

		2007-08		2008-09		2009-10		2010-11		2011-12		% Change 07/08-11/12	College Average 07/08-11/12	All Colleges Average 07/08-11/12
AA/AS Degree	Female	226	50%	259	47%	300	52%	296	52%	269	45%	19%	49%	56%
	Male	226	50%	286	52%	279	48%	278	48%	325	55%	44%	51%	44%
	Unreported	0	0%	1	0%	0	0%	0	0%	0	0%	---	0%	0%
	Total	452	100%	546	100%	579	100%	574	100%	594	100%	31%	100%	100%
Certificate 60 or More Units	Female	0	0%	0	0%	0	0%	0	0%	1	6%	---	5%	51%
	Male	0	0%	0	0%	2	100%	4	100%	15	94%	---	95%	49%
	Total	0	0%	0	0%	2	100%	4	100%	16	100%	---	100%	100%
Certificate 30 to 59 Units	Female	50	41%	64	42%	108	40%	73	41%	61	28%	22%	38%	50%
	Male	73	59%	87	57%	164	60%	103	59%	155	72%	112%	62%	49%
	Unreported	0	0%	1	1%	0	0%	0	0%	0	0%	---	0%	0%
	Total	123	100%	152	100%	272	100%	176	100%	216	100%	76%	100%	100%
Certificate 29 or Fewer Units	Female	80	34%	92	43%	88	43%	65	36%	76	45%	-5%	40%	43%
	Male	152	66%	120	57%	115	57%	118	64%	93	55%	-39%	60%	57%
	Total	232	100%	212	100%	203	100%	183	100%	169	100%	-27%	100%	100%
Grand Total	807	100%	910	100%	1,056	100%	937	100%	995	100%	23%	100%	100%	

Source: SDCCD Information System

Miramar College Fact Book 2012

Annual Awards Conferred by Ethnicity: With the exception of African American students, the number of associate degrees conferred at Miramar College increased for all other ethnicities between 2007/08 and 2011/12. From 2007/08 to 2011/12, White students received the most awards across all of the award categories. Asian/Pacific Islander students had the second highest number of awards conferred across most of the award categories. Both African American and Latino students at Miramar College were consistently underrepresented across most awards categories when compared to the same ethnic student populations of all colleges in the district, whereas both White and Filipino students were overrepresented across most of the types of awards conferred when compared to the same ethnic student populations of all colleges in the district.

Figure 3.15.1. Miramar College Annual AA/AS Degrees by Ethnicity

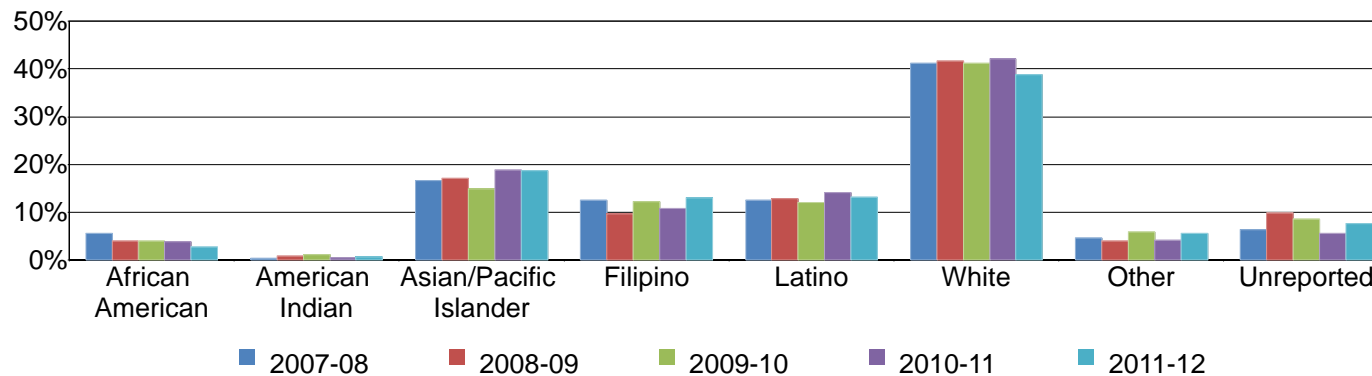
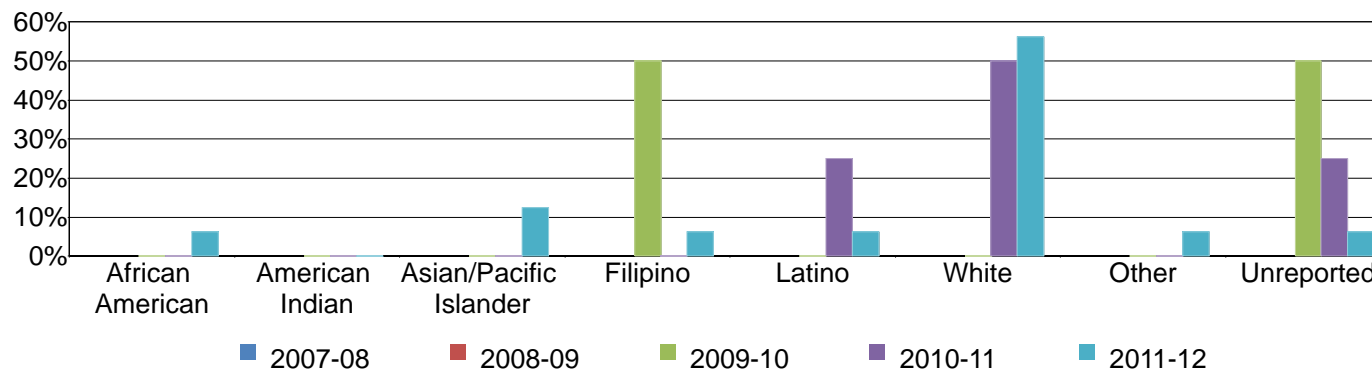


Figure 3.15.2. Miramar College Annual Certificates 60 or More Units by Ethnicity



Miramar College Fact Book 2012

Figure 3.15.3. Miramar College Annual Certificates 30 to 59 Units by Ethnicity

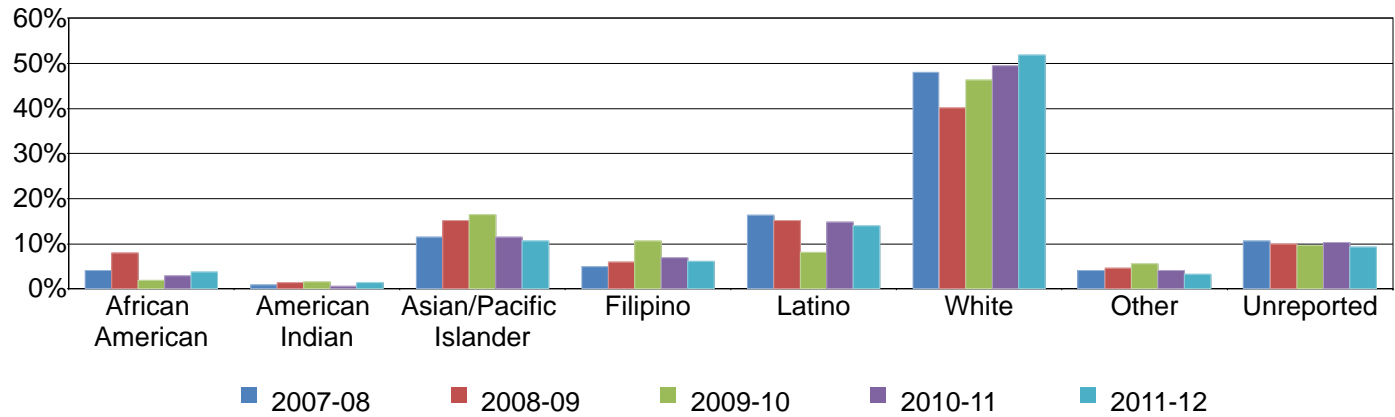
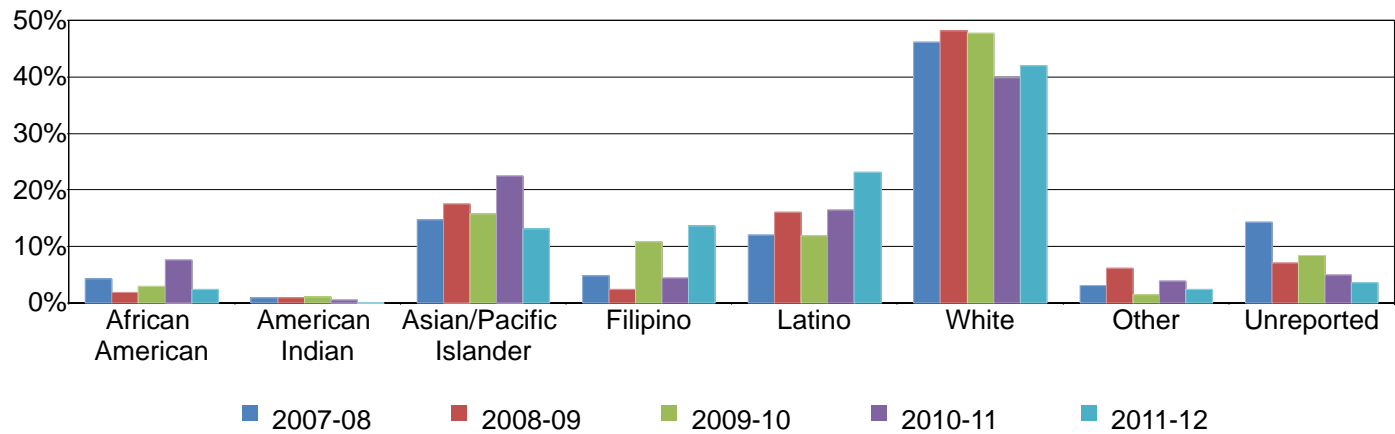


Figure 3.15.4. Miramar College Annual Certificates 29 or Fewer Units by Ethnicity



Miramar College Fact Book 2012

Table 3.15. Miramar College Annual Awards Conferred by Ethnicity

		2007-08		2008-09		2009-10		2010-11		2011-12		% Change 07/08-11/12	College Average 07/08-11/12	All Colleges Average 07/08-11/12
AA/AS Degree	African American	25	6%	22	4%	23	4%	22	4%	16	3%	-36%	4%	8%
	American Indian	2	0%	5	1%	7	1%	3	1%	4	1%	100%	1%	1%
	Asian/Pacific Islander	75	17%	93	17%	86	15%	108	19%	111	19%	48%	17%	13%
	Filipino	57	13%	53	10%	71	12%	62	11%	77	13%	35%	12%	7%
	Latino	57	13%	70	13%	70	12%	81	14%	78	13%	37%	13%	21%
	White	186	41%	227	42%	238	41%	242	42%	230	39%	24%	41%	38%
	Other	21	5%	22	4%	34	6%	24	4%	33	6%	57%	5%	4%
	Unreported	29	6%	54	10%	50	9%	32	6%	45	8%	55%	8%	8%
Total	452	100%	546	100%	579	100%	574	100%	594	100%	31%	100%	100%	
Certificate 60 or More Units	African American	0	0%	0	0%	0	0%	0	0%	1	6%	---	5%	4%
	Asian/Pacific Islander	0	0%	0	0%	0	0%	0	0%	2	13%	---	9%	14%
	Filipino	0	0%	0	0%	1	50%	0	0%	1	6%	---	9%	12%
	Latino	0	0%	0	0%	0	0%	1	25%	1	6%	---	9%	14%
	White	0	0%	0	0%	0	0%	2	50%	9	56%	---	50%	39%
	Other	0	0%	0	0%	0	0%	0	0%	1	6%	---	5%	3%
	Unreported	0	0%	0	0%	1	50%	1	25%	1	6%	---	14%	14%
	Total	0	0%	0	0%	2	100%	4	100%	16	100%	---	100%	100%

Source: SDCCD Information System

Miramar College Fact Book 2012

Table 3.15. Miramar College Annual Awards Conferred by Ethnicity (continued)

		2007-08		2008-09		2009-10		2010-11		2011-12		% Change 07/08-11/12	College Average 07/08-11/12	All Colleges Average 07/08-11/12
Certificate 30 to 59 Units	African American	5	4%	12	8%	5	2%	5	3%	8	4%	60%	4%	8%
	American Indian	1	1%	2	1%	4	1%	1	1%	3	1%	200%	1%	1%
	Asian/Pacific Islander	14	11%	23	15%	45	17%	20	11%	23	11%	64%	13%	12%
	Filipino	6	5%	9	6%	29	11%	12	7%	13	6%	117%	7%	5%
	Latino	20	16%	23	15%	22	8%	26	15%	30	14%	50%	13%	20%
	White	59	48%	61	40%	126	46%	87	49%	112	52%	90%	47%	42%
	Other	5	4%	7	5%	15	6%	7	4%	7	3%	40%	4%	4%
	Unreported	13	11%	15	10%	26	10%	18	10%	20	9%	54%	10%	8%
	Total	123	100%	152	100%	272	100%	176	100%	216	100%	76%	100%	100%
Certificate 29 or Fewer Units	African American	10	4%	4	2%	6	3%	14	8%	4	2%	-60%	4%	7%
	American Indian	2	1%	2	1%	2	1%	1	1%	0	0%	-100%	1%	1%
	Asian/Pacific Islander	34	15%	37	17%	32	16%	41	22%	22	13%	-35%	17%	12%
	Filipino	11	5%	5	2%	22	11%	8	4%	23	14%	109%	7%	4%
	Latino	28	12%	34	16%	24	12%	30	16%	39	23%	39%	16%	25%
	White	107	46%	102	48%	97	48%	73	40%	71	42%	-34%	45%	41%
	Other	7	3%	13	6%	3	1%	7	4%	4	2%	-43%	3%	4%
	Unreported	33	14%	15	7%	17	8%	9	5%	6	4%	-82%	8%	6%
	Total	232	100%	212	100%	203	100%	183	100%	169	100%	-27%	100%	100%
Grand Total	807	100%	910	100%	1,056	100%	937	100%	995	100%	23%	100%	100%	

Source: SDCCD Information System

Miramar College Fact Book 2012

Annual Awards Conferred by Age: Approximately two-thirds of the total number of associate degrees and half of the certificates awarded between 2007/08 and 2011/12 were to students ages 18-29 years old on average. Students between ages 25 and 29 years old consistently displayed a trend of receiving approximately one-quarter of the awards within each award category. Students ages 18-24 years old were overrepresented in most of the number of awards received at Miramar College when compared to the same age group of all colleges in the district.

Figure 3.16.1. Miramar College Annual AA/AS Degrees by Age

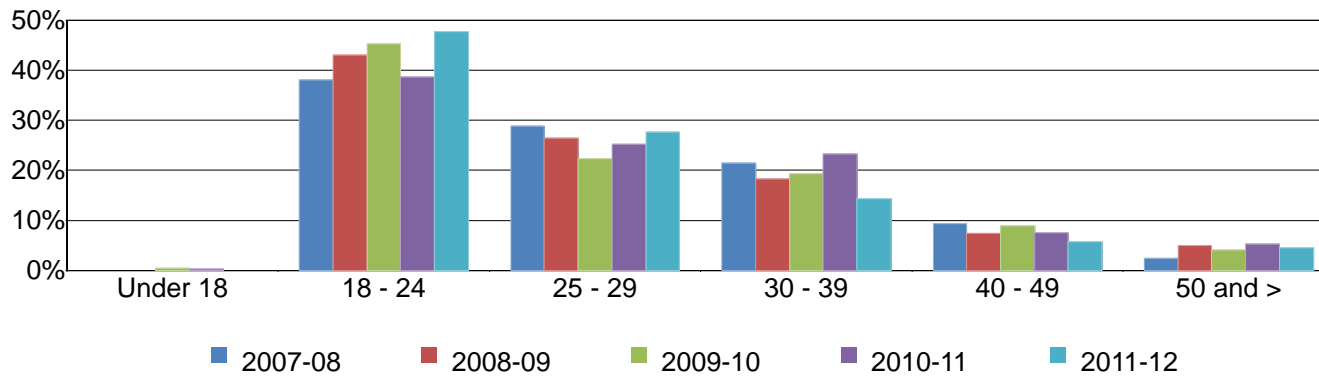
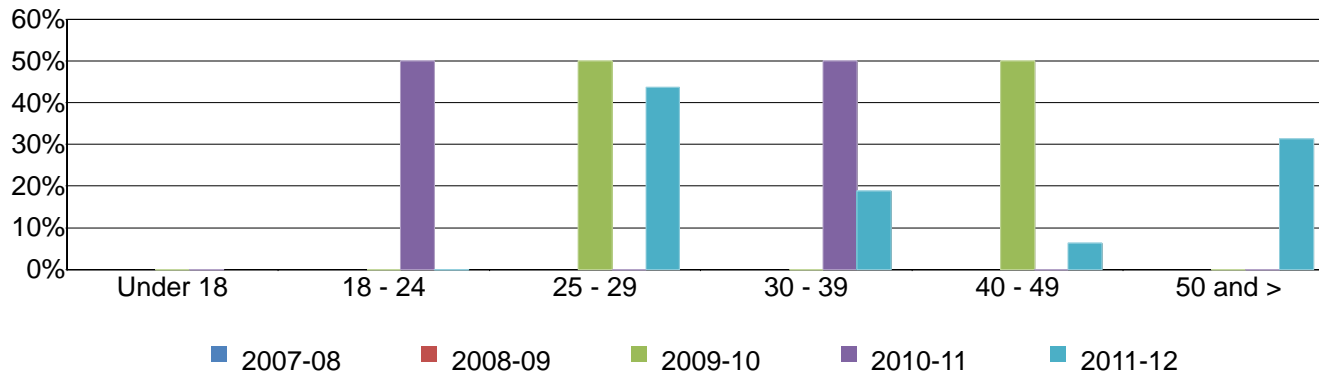


Figure 3.16.2. Miramar College Annual Certificates 60 or More Units by Age



Miramar College Fact Book 2012

Figure 3.16.3. Miramar College Annual Certificates 30 to 59 Units by Age

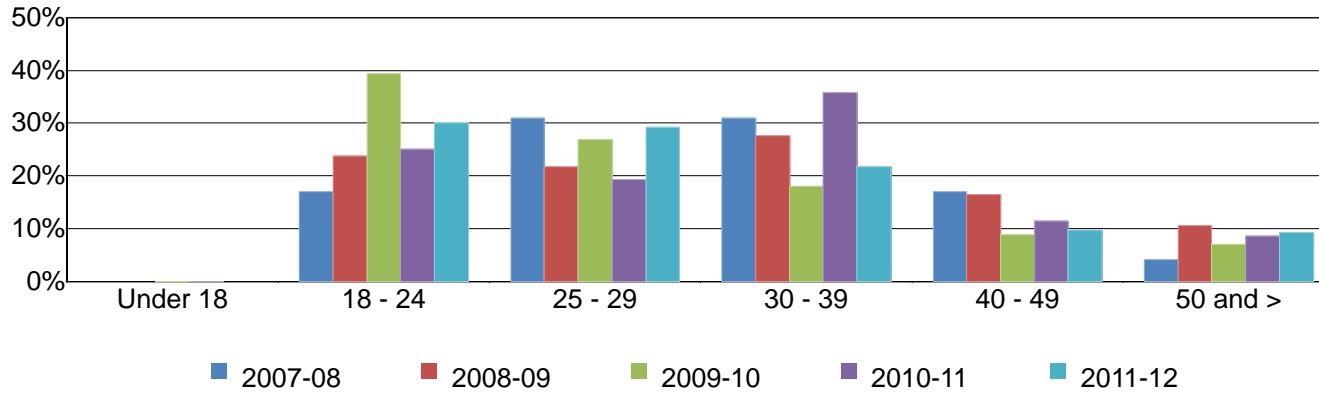
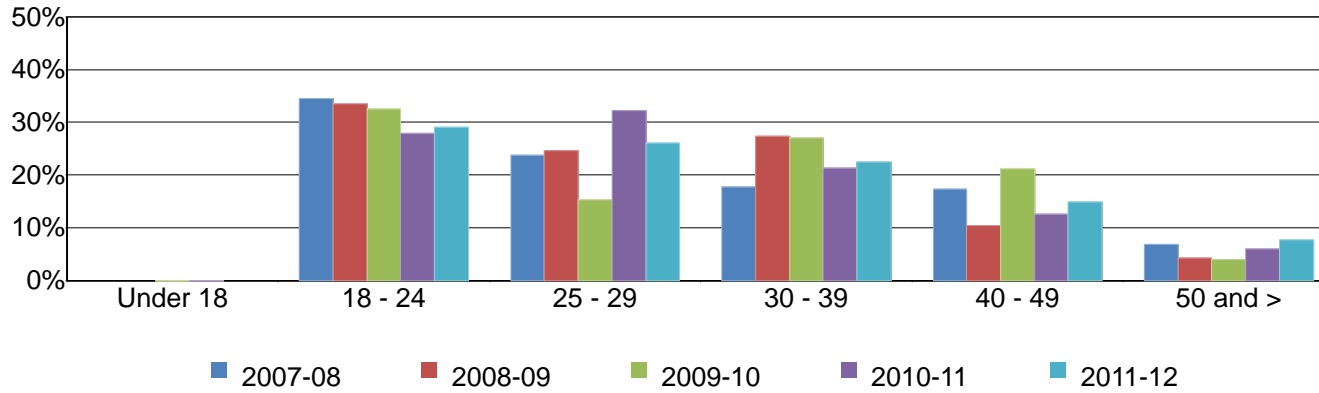


Figure 3.16.4. Miramar College Annual Certificates 29 or Fewer Units by Age



Miramar College Fact Book 2012

Table 3.16. Miramar College Annual Awards Conferred by Age

		2007-08		2008-09		2009-10		2010-11		2011-12		% Change 07/08-11/12	College Average 07/08-11/12	All Colleges Average 07/08-11/12
AA/AS Degree	Under 18	0	0%	0	0%	2	0%	1	0%	0	0%	---	0%	0%
	18 - 24	172	38%	235	43%	262	45%	222	39%	284	48%	65%	43%	38%
	25 - 29	130	29%	144	26%	129	22%	145	25%	164	28%	26%	26%	27%
	30 - 39	97	21%	100	18%	112	19%	133	23%	85	14%	-12%	19%	21%
	40 - 49	42	9%	40	7%	51	9%	43	7%	34	6%	-19%	8%	9%
	50 and >	11	2%	27	5%	23	4%	30	5%	27	5%	145%	4%	5%
	Total	452	100%	546	100%	579	100%	574	100%	594	100%	31%	100%	100%
Certificate 60 or More Units	18 - 24	0	0%	0	0%	0	0%	2	50%	0	0%	---	9%	12%
	25 - 29	0	0%	0	0%	1	50%	0	0%	7	44%	---	36%	32%
	30 - 39	0	0%	0	0%	0	0%	2	50%	3	19%	---	23%	30%
	40 - 49	0	0%	0	0%	1	50%	0	0%	1	6%	---	9%	16%
	50 and >	0	0%	0	0%	0	0%	0	0%	5	31%	---	23%	10%
	Total	0	0%	0	0%	2	100%	4	100%	16	100%	---	100%	100%
Certificate 30 to 59 Units	18 - 24	21	17%	36	24%	107	39%	44	25%	65	30%	210%	29%	25%
	25 - 29	38	31%	33	22%	73	27%	34	19%	63	29%	66%	26%	24%
	30 - 39	38	31%	42	28%	49	18%	63	36%	47	22%	24%	25%	25%
	40 - 49	21	17%	25	16%	24	9%	20	11%	21	10%	0%	12%	15%
	50 and >	5	4%	16	11%	19	7%	15	9%	20	9%	300%	8%	10%
	Total	123	100%	152	100%	272	100%	176	100%	216	100%	76%	100%	100%
Certificate 29 or Fewer Units	18 - 24	80	34%	71	33%	66	33%	51	28%	49	29%	-39%	32%	22%
	25 - 29	55	24%	52	25%	31	15%	59	32%	44	26%	-20%	24%	26%
	30 - 39	41	18%	58	27%	55	27%	39	21%	38	22%	-7%	23%	28%
	40 - 49	40	17%	22	10%	43	21%	23	13%	25	15%	-38%	15%	16%
	50 and >	16	7%	9	4%	8	4%	11	6%	13	8%	-19%	6%	10%
	Total	232	100%	212	100%	203	100%	183	100%	169	100%	-27%	100%	100%
Grand Total	807	100%	910	100%	1,056	100%	937	100%	995	100%	23%	100%	100%	

Source: SDCCD Information System

Miramar College Fact Book 2012

Annual Transfer Volume: The annual transfer volume for Miramar College decreased 17%, from 609 in 2007/08 to 503 in 2011/12.

Figure 3.17. Miramar College Overall Annual Transfers

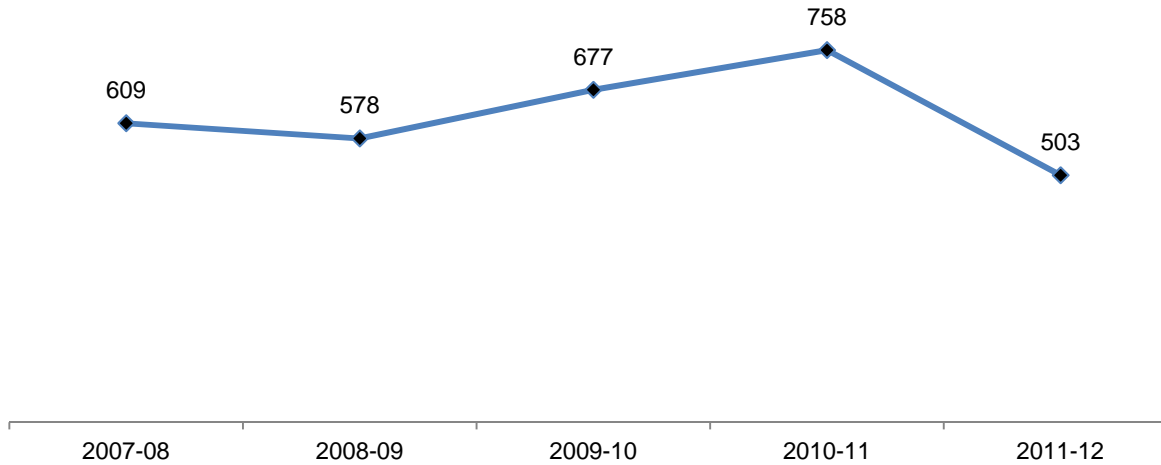


Table 3.17. Miramar College Overall Annual Transfers

	2007-08	2008-09	2009-10	2010-11	2011-12	% Change 07/08-11/12
Total	609	578	677	758	503	-17%

Source: SDCCD Information System

Miramar College Fact Book 2012

Annual Transfer Volume by Gender: Between 2007/08 and 2011/12, female students (51%) had a higher transfer volume, on average, compared to their male student counterpart (49%). The transfer volume for both male and female students decreased between 2007/08 and 2011/12 (9% & 25%, respectively).

Figure 3.18. Miramar College Annual Transfers by Gender

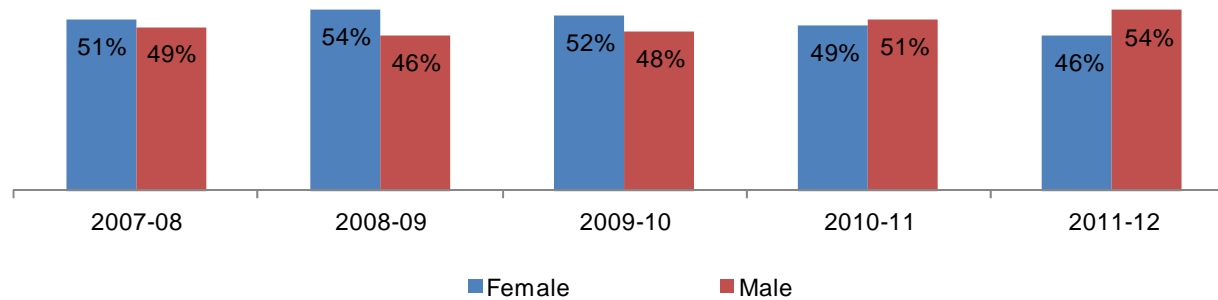


Table 3.18. Miramar College Annual Transfers by Gender

	2007-08		2008-09		2009-10		2010-11		2011-12		% Change 07/08-11/12	College Average 07/08-11/12	All Colleges Average 07/08-11/12
Female	311	51%	311	54%	354	52%	372	49%	233	46%	-25%	51%	52%
Male	297	49%	267	46%	322	48%	386	51%	270	54%	-9%	49%	48%
Unreported	1	0%	0	0%	1	0%	0	0%	0	0%	-100%	0%	0%
Total	609	100%	578	100%	677	100%	758	100%	503	100%	-17%	100%	100%

Source: SDCCD Information System

Miramar College Fact Book 2012

Annual Transfer Volume by Ethnicity: Of all the students who transferred from Miramar College, 42% were White students on average. Ethnic groups with the second and third highest transfer volumes were Asian/Pacific Islanders students (19%) and Filipino students (11%) between 2007/08 and 2011/12. Most of the ethnic groups displayed a decreased trend in transfer volume, with the exception of both African American and American Indian students. Filipino students decreased the most in transfer volume (52%) between 2007/08 and 2011/12.

Figure 3.19. Miramar College Annual Transfers by Ethnicity

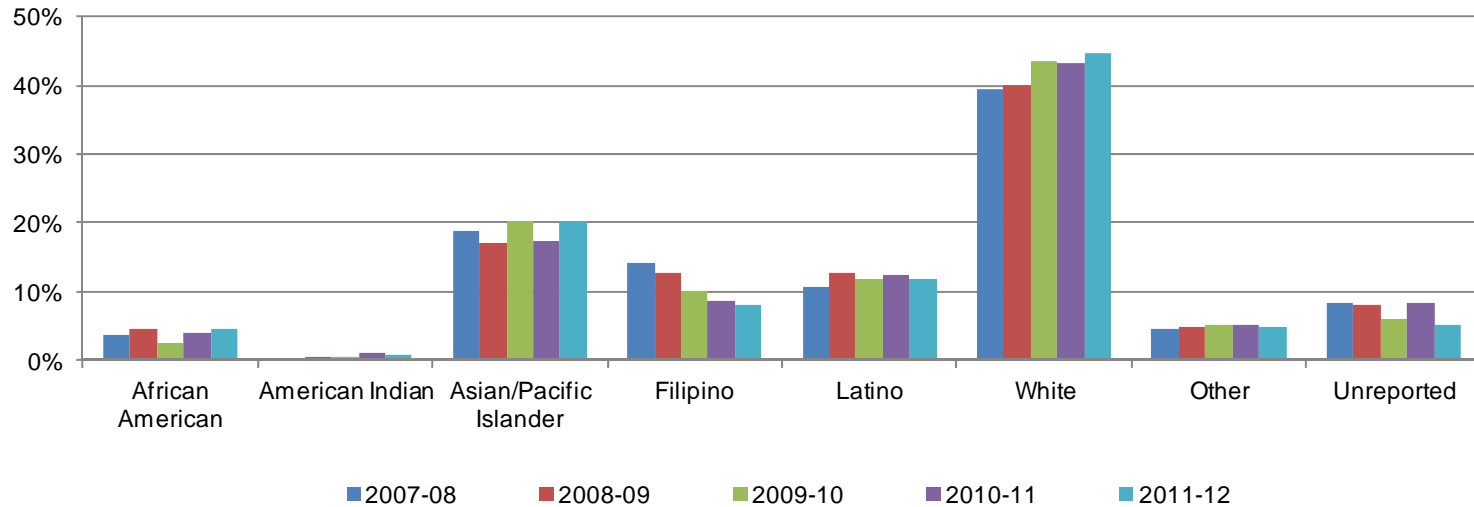


Table 3.19. Miramar College Annual Transfers by Ethnicity

	2007-08		2008-09		2009-10		2010-11		2011-12		% Change 07/08-11/12	College Average 07/08-11/12	All Colleges Average 07/08-11/12
African American	22	4%	27	5%	17	3%	29	4%	23	5%	5%	4%	6%
American Indian	2	0%	2	0%	4	1%	7	1%	4	1%	100%	1%	1%
Asian/Pacific Islander	115	19%	98	17%	137	20%	131	17%	102	20%	-11%	19%	13%
Filipino	86	14%	73	13%	69	10%	66	9%	41	8%	-52%	11%	5%
Latino	65	11%	73	13%	80	12%	95	13%	59	12%	-9%	12%	18%
White	241	40%	231	40%	295	44%	328	43%	224	45%	-7%	42%	45%
Other	28	5%	28	5%	34	5%	39	5%	24	5%	-14%	5%	4%
Unreported	50	8%	46	8%	41	6%	63	8%	26	5%	-48%	7%	8%
Total	609	100%	578	100%	677	100%	758	100%	503	100%	-17%	100%	100%

Source: SDCCD Information System

Miramar College Fact Book 2012

Annual Transfer Volume by Age: The age groups with the highest transfer volume, on average, were students ages 18-24 (58%), students between ages 25 and 29 years old (25%), and students ages 30 to 39 years old (13%) between 2007/08 and 2011/12. Most of the age groups displayed a decreased trend in transfer volume, with the exception of students ages 40-49 and ages 50 and older. Students ages 50 and older showed the only increase (17%) in transfer volume, from 6 in 2007/08 to 7 in 2011/12.

Figure 3.20. Miramar College Annual Transfers by Age

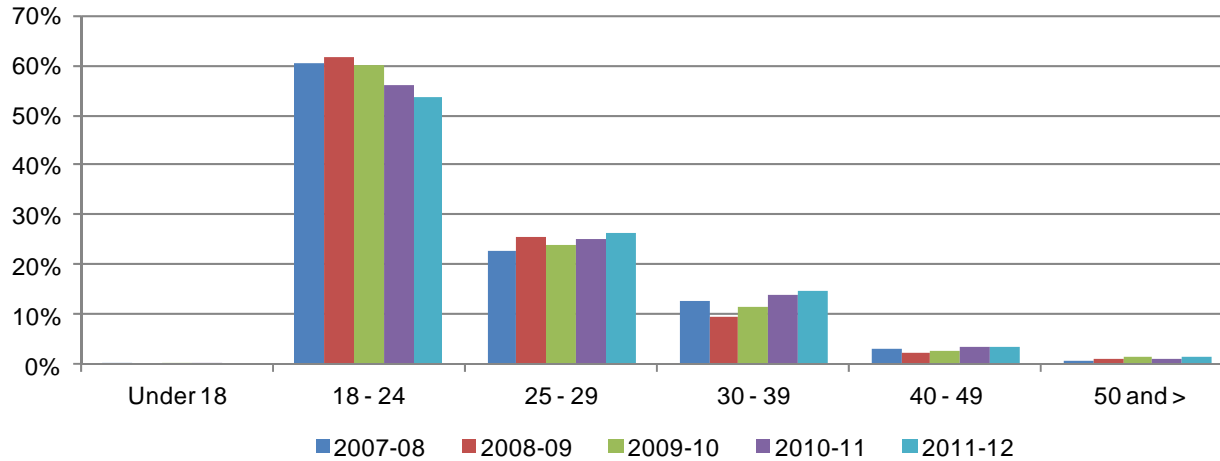


Table 3.20. Miramar College Annual Transfers by Age

	2007-08		2008-09		2009-10		2010-11		2011-12		% Change 07/08-11/12	College Average 07/08-11/12	All Colleges Average 07/08-11/12
Under 18	1	0%	0	0%	1	0%	1	0%	0	0%	-100%	0%	0%
18 - 24	367	60%	355	61%	405	60%	425	56%	270	54%	-26%	58%	58%
25 - 29	139	23%	149	26%	162	24%	191	25%	133	26%	-4%	25%	25%
30 - 39	77	13%	55	10%	79	12%	107	14%	74	15%	-4%	13%	13%
40 - 49	19	3%	13	2%	20	3%	26	3%	19	4%	0%	3%	3%
50 and >	6	1%	6	1%	10	1%	8	1%	7	1%	17%	1%	1%
Unreported	0	0%	0	0%	0	0%	0	0%	0	0%	---	0%	0%
Total	609	100%	578	100%	677	100%	758	100%	503	100%	-17%	100%	100%

Source: SDCCD Information System

Miramar College Fact Book 2012

Annual Transfer Volume by CSU-UC/Private (In-State)/Out-of-State: On average, nearly half of the Miramar College transfer volume were students who transferred into the California State University system (CSU) (49%), followed by the University of California system (UC) (19%), Out-of-State institutions (20%), and then In-State private institutions (12%). Students who transferred from Miramar College to an Out-of-State institution increased in transfer volume (29%), from 109 in 2007/08 to 141 in 2011/12.

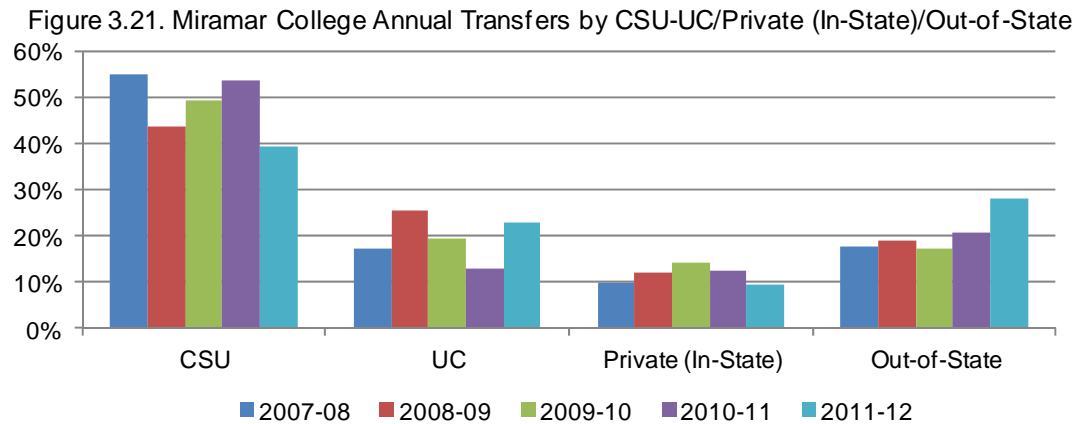


Table 3.21. Miramar College Annual Transfers by CSU-UC/Private (In-State)/Out-of-State

	2007-08		2008-09		2009-10		2010-11		2011-12		% Change 07/08-11/12	College Average 07/08-11/12	All Colleges Average 07/08-11/12
CSU	334	55%	252	44%	334	49%	407	54%	198	39%	-41%	49%	48%
UC	106	17%	147	25%	131	19%	99	13%	116	23%	9%	19%	19%
Private (In-State)	60	10%	70	12%	95	14%	94	12%	48	10%	-20%	12%	14%
Out-of-State	109	18%	109	19%	117	17%	158	21%	141	28%	29%	20%	20%
Total	609	100%	578	100%	677	100%	758	100%	503	100%	-17%	100%	100%

Source: SDCCD Information System

Note. Out-of-State included both public and private 4-year institutions.

Miramar College Fact Book 2012

Annual Transfer Volume by CSU/UC: Of the total Miramar College transfer volume (see table 3.17), 66% transferred into either the California State University (CSU) or University of California (UC) systems on average (49% & 19%, respectively). Of the total number of students who transferred to CSU or UC systems, the majority of students went to CSU (72%) and more than one-quarter went to UC (28%) on average. The CSU system showed a decreased trend in the number of students who transferred from Miramar College (41%), while the UC system displayed an increased trend in the number of students who transferred from Miramar College (9%) between 2007/08 and 2011/12.

Figure 3.22. Miramar College Annual Transfers by CSU/UC

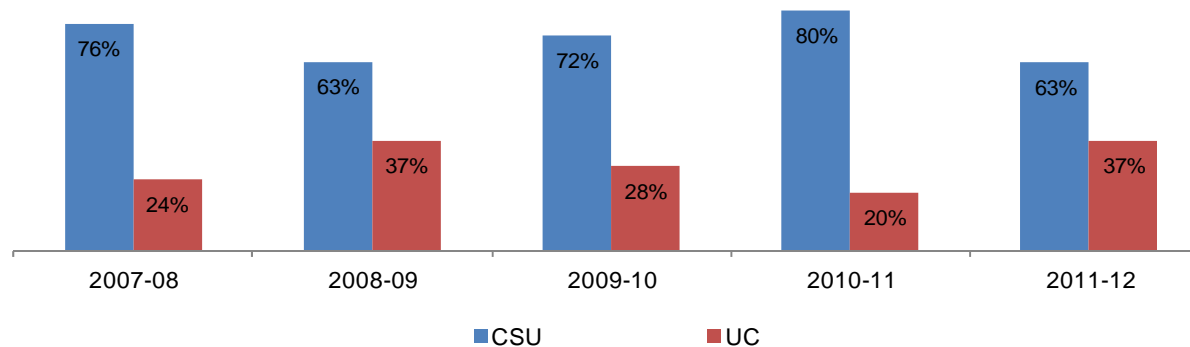


Table 3.22. Miramar College Annual Transfers by CSU/UC

	2007-08		2008-09		2009-10		2010-11		2011-12		% Change 07/08-11/12	College Average 07/08-11/12	All Colleges Average 07/08-11/12
CSU	334	76%	252	63%	334	72%	407	80%	198	63%	-41%	72%	72%
UC	106	24%	147	37%	131	28%	99	20%	116	37%	9%	28%	28%
Total	440	100%	399	100%	465	100%	506	100%	314	100%	-29%	100%	100%

Source: SDCCD Information System

Miramar College Fact Book 2012

Annual Transfer Volume by Institution Type: Of those who transferred from Miramar College, 22% transferred to a private institution and 78% transferred to a public institution on average. Private institutions displayed an increased trend in the number of students who transferred from Miramar College (5%), while public institutions display a decreased trend in the number of students who transferred from Miramar College (23%) to their respective institutions between 2007/08 and 2011/12.

Figure 3.23. Miramar College Annual Transfers by Institution Type

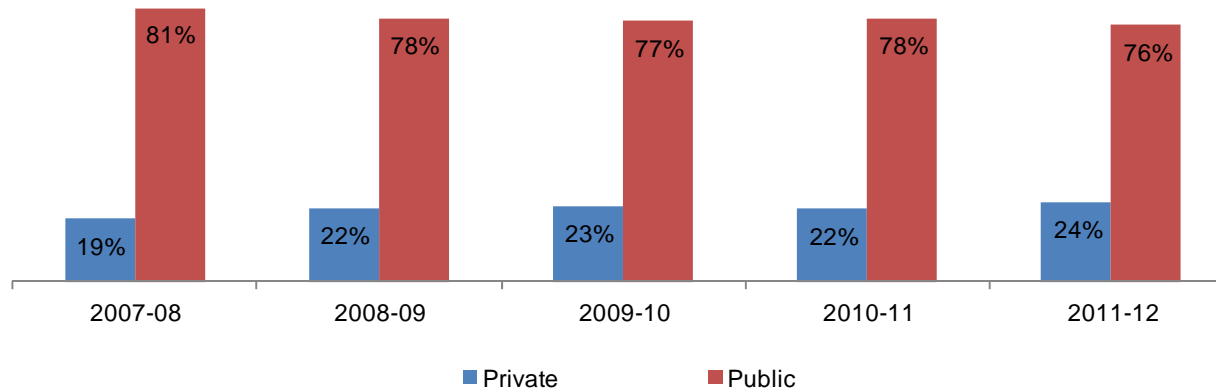


Table 3.23. Miramar College Annual Transfers by Institution Type

	2007-08		2008-09		2009-10		2010-11		2011-12		% Change 07/08-11/12	College Average 07/08-11/12	All Colleges Average 07/08-11/12
Private	114	19%	127	22%	153	23%	165	22%	120	24%	5%	22%	24%
Public	495	81%	451	78%	524	77%	593	78%	383	76%	-23%	78%	76%
Total	609	100%	578	100%	677	100%	758	100%	503	100%	-17%	100%	100%

Source: SDCCD Information System

Note. Public and Private included both Out-of-State and In-State 4-year institutions.

**Section IV
Productivity and Efficiency**

Miramar College Fact Book 2012

This section of the Fact Book contains information on productivity and efficiency measures. The following describes in detail each of the measures:

- 1) FTES. The first measure reported in this section is a measure of productivity. FTES is a calculation of full-time equivalent students enrolled as of official census and is based on the total number of student contact hours. Starting in 2009-10 tutoring hours (course number 044) can only be claimed for Basic Skills classes at the credit colleges.
- 2) Enrollments. The second measure in this section of the report is also a measure of productivity. Enrollments are the number of seats enrolled or duplicated headcount as of a class census day (excludes those students who dropped or never attended prior to census day). Cancelled and tutoring classes are excluded. The measure counts all of the classes in which a single student is enrolled compared to unduplicated headcount which counts the student only once regardless of the number of classes he/she may be enrolled in.
- 3) Fill Rates. The third measure reported in this section is a measure of efficiency. Fill rates are the enrollment divided by the capacity or enrollment maximum defined in the curriculum as Cap. Apprenticeship, non-state supported, in-service, cancelled, tutoring, and classes with fewer than two enrollment capacity are excluded from the Fill Rate calculation.
- 4) Load. The fourth measure reported in this section is a measure of efficiency. Load is a calculation of the ratio of Weekly Student Contact Hours (WSCH) to Full-time Equivalent Faculty (WSCH/FTEF).

Miramar College Fact Book 2012

Annual FTES: Between 2007/08 and 2011/12, Miramar College showed a 1% decrease in total FTES. For the most part, credit FTES remained stable between 2007/08 and 2011/12. College non-credit FTES decreased by half (50%) between 2007/08 and 2011/12.

Figure 4.1. Miramar College Resident & Non Resident Annual FTES

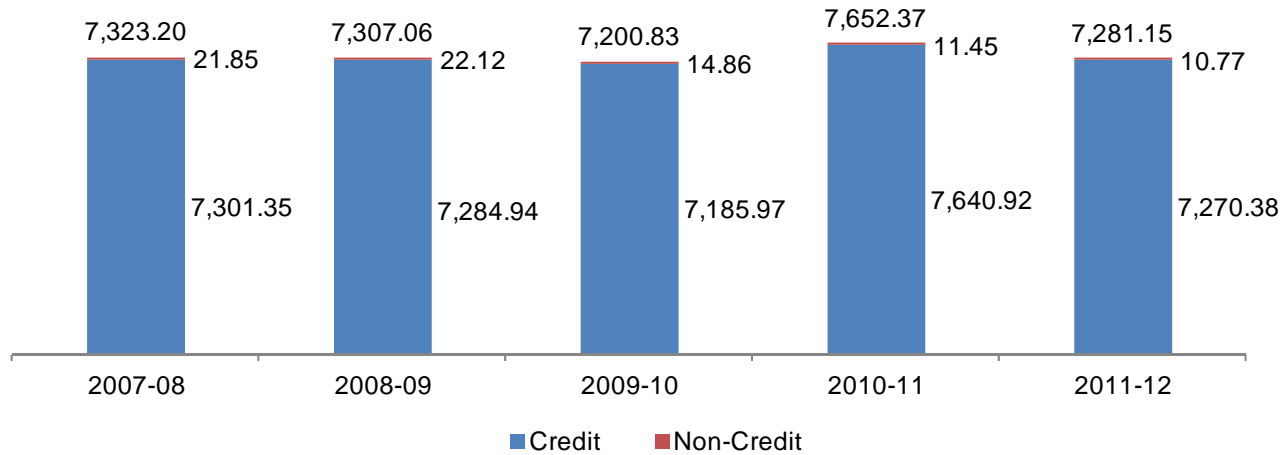


Table 4.1. Miramar College Resident & Non Resident Annual FTES

	2007-08	2008-09	2009-10	2010-11	2011-12
Credit	7,301.35	7,284.94	7,185.97	7,640.92	7,270.38
Non-Credit	21.85	22.12	14.86	11.45	10.77
Total	7,323.20	7,307.06	7,200.83	7,652.37	7,281.15

Source: SDCCD Information System

Miramar College Fact Book 2012

Enrollments: The enrollment trend for the online mode of instruction decreased for summer (96%), and increased for both the fall and spring (28% each) terms between 2007/08 and 2011/12. The on campus mode of instruction enrollment decreased for the summer (80%) and fall (3%) terms, while increased for the spring (8%) term between 2007/08 and 2011/12. With the exception of the summer term, the total enrollment trends for all colleges in the district were higher compared to the total enrollment trends for Miramar College across the fall and spring terms.

Figure 4.2.1. Miramar College Enrollments (Summer)

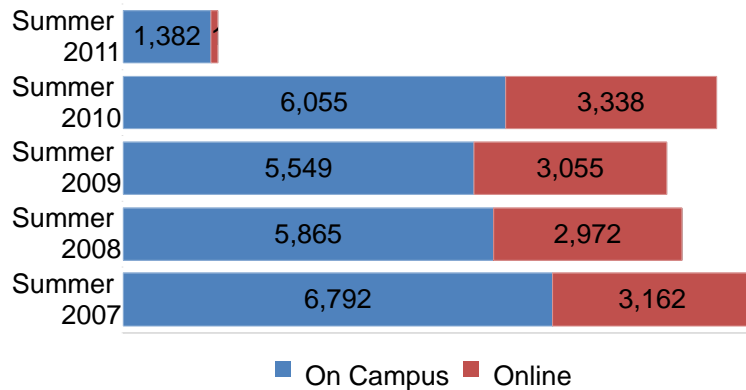


Figure 4.2.2. Miramar College Enrollments (Fall)

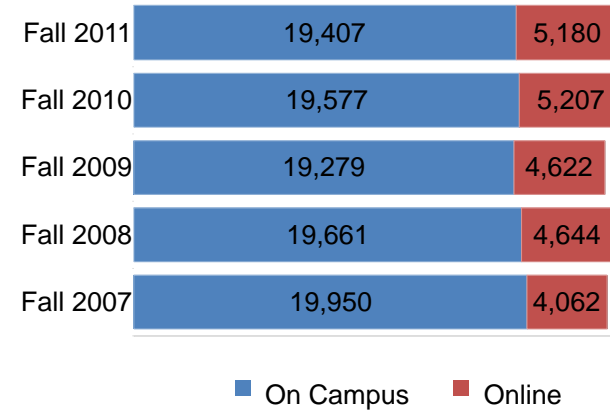
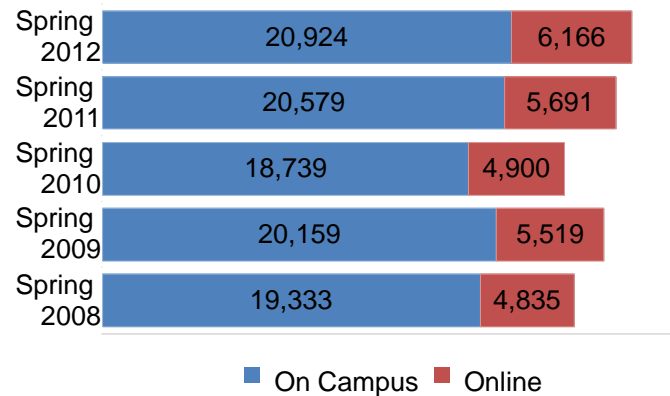


Figure 4.2.3. Miramar College Enrollments (Spring)



Miramar College Fact Book 2012

Fill Rates: The overall fill rates for Miramar College were the highest for the fall and spring terms, on average, when compared to summer term (92% & 93% vs. 86%, respectively) between 2007/08 and 2011/12. Overall fill rates for all colleges in the district followed the same pattern. On average, fill rates were the highest for the on campus mode of instruction across the fall and spring terms (92% & 94%, respectively) compared to the online mode of instruction (fall 90% & spring 93% terms). The trend was slightly higher for the summer terms (87% for online vs. 85% for on campus). Miramar College had higher overall fill rates, on average, compared to the fill rates of all colleges in the district across all modes of instruction.

Figure 4.3.1. Miramar College Fill Rates (Summer)

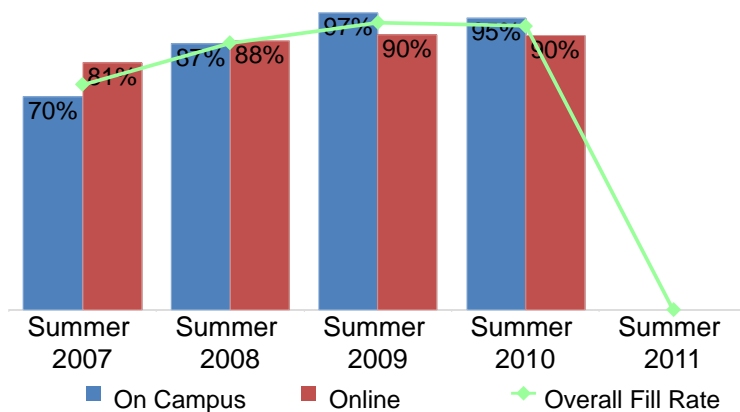


Figure 4.3.2. Miramar College Fill Rates (Fall)

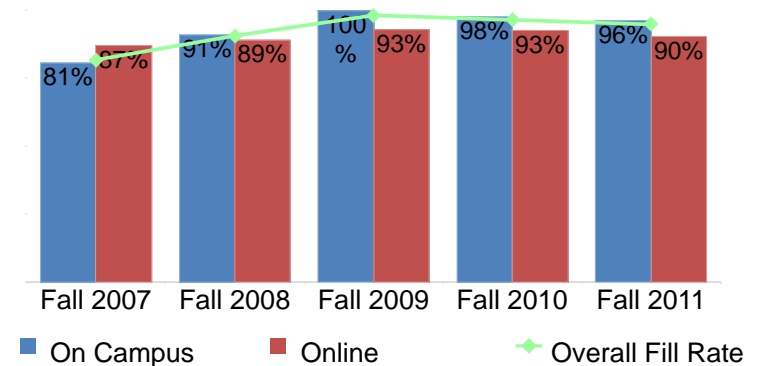
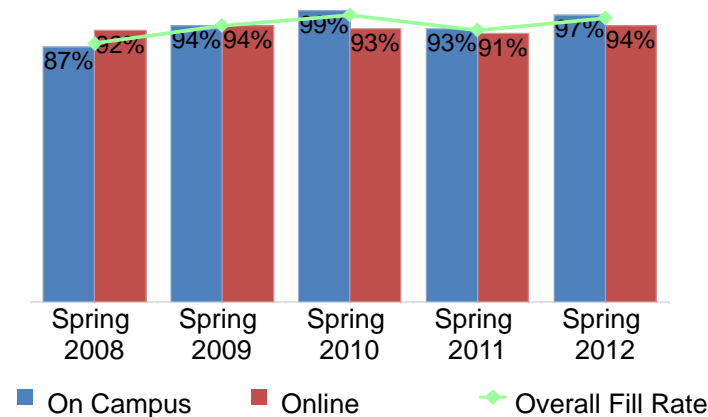


Figure 4.3.3. Miramar College Fill Rates (Spring)



Miramar College Fact Book 2012

Table 4.2. Miramar College Enrollments and Fill Rates

	On Campus			Online			Miramar College Total			All Colleges Total		
	Enrollment	Capacity	Fill Rate	Enrollment	Capacity	Fill Rate	Enrollment	Capacity	Fill Rate	Enrollment	Capacity	Fill Rate
Summer 2007	6,792	9,050	70%	3,162	3,910	81%	9,954	12,960	74%	37,414	56,523	65%
Summer 2008	5,865	7,760	87%	2,972	3,383	88%	8,837	11,143	87%	39,398	52,086	77%
Summer 2009	5,549	6,800	97%	3,055	3,401	90%	8,604	10,201	94%	39,262	45,761	88%
Summer 2010	6,055	7,319	95%	3,338	3,723	90%	9,393	11,042	93%	35,729	39,947	91%
Summer 2011	1,382	2,898	---	115	0	---	1,497	2,898	---	3,806	3,176	100%
Total	25,643	33,827	85%	12,642	14,417	87%	38,285	48,244	86%	155,609	197,493	79%

	On Campus			Online			Miramar College Total			All Colleges Total		
	Enrollment	Capacity	Fill Rate	Enrollment	Capacity	Fill Rate	Enrollment	Capacity	Fill Rate	Enrollment	Capacity	Fill Rate
Fall 2007	19,950	24,618	81%	4,062	4,675	87%	24,012	29,293	82%	117,881	149,637	79%
Fall 2008	19,661	21,289	91%	4,644	5,217	89%	24,305	26,506	91%	122,665	143,013	85%
Fall 2009	19,279	19,505	100%	4,622	4,947	93%	23,901	24,452	98%	123,429	133,381	92%
Fall 2010	19,577	20,138	98%	5,207	5,619	93%	24,784	25,757	97%	131,415	141,921	92%
Fall 2011	19,407	20,217	96%	5,180	5,725	90%	24,587	25,942	95%	126,421	138,386	91%
Total	97,874	105,767	92%	23,715	26,183	90%	121,589	131,950	92%	621,811	706,338	87%

	On Campus			Online			Miramar College Total			All Colleges Total		
	Enrollment	Capacity	Fill Rate	Enrollment	Capacity	Fill Rate	Enrollment	Capacity	Fill Rate	Enrollment	Capacity	Fill Rate
Spring 2008	19,333	21,994	87%	4,835	5,246	92%	24,168	27,240	88%	121,196	153,400	79%
Spring 2009	20,159	21,421	94%	5,519	5,894	94%	25,678	27,315	94%	126,372	143,639	87%
Spring 2010	18,739	18,941	99%	4,900	5,280	93%	23,639	24,221	97%	123,528	132,520	93%
Spring 2011	20,579	22,062	93%	5,691	6,235	91%	26,270	28,297	92%	133,644	147,340	90%
Spring 2012	20,924	21,606	97%	6,166	6,582	94%	27,090	28,188	96%	130,394	141,973	91%
Total	99,734	106,024	94%	27,111	29,237	93%	126,845	135,261	93%	635,134	718,872	88%

Source: SDCCD Information System

Note. The Enrollment and Capacity in the above table are not part of the Fill Rate calculation.

Miramar College Fact Book 2012

Load: The Load value for Fall 2011 was greater than the Load values for the other four fall terms. Similarly, the Load value for Spring 2010 was greater than the Load values for the other four spring terms. The Miramar College Load values were lower compared to the all colleges in the district Load values across the fall and spring terms. The statewide benchmark for Load is 525 for a 17.5 week semester. SDCCD has set an internal benchmark of 557, which is commensurate to its 16.5 week semester.

Figure 4.4.1. Miramar College Load (Fall)

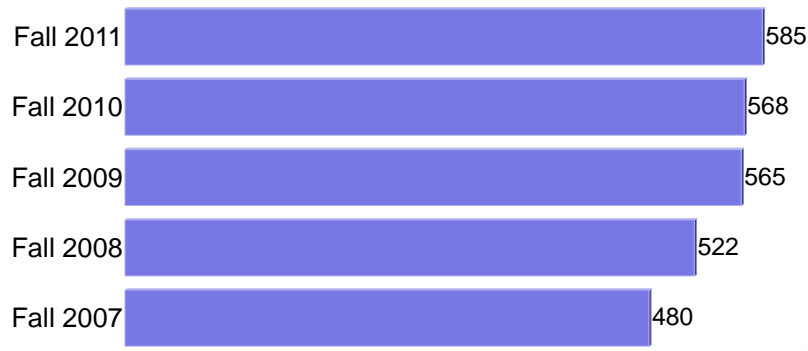


Figure 4.4.2. Miramar College Load (Spring)



Table 4.4. Miramar College Load

	Miramar College Load	All Colleges Load
Fall 2007	480	496
Fall 2008	522	533
Fall 2009	565	575
Fall 2010	568	572
Fall 2011	585	578
Spring 2008	492	495
Spring 2009	528	544
Spring 2010	575	582
Spring 2011	534	553
Spring 2012	570	571

Source: SDCCD Information System

Section V
Human Resources

Miramar College Fact Book 2012

This section of the Fact Book contains information on the number and classification of employees during the Fall 2011 semester. The information is reported as follows:

- 1) Gender
- 2) Ethnicity
- 3) Employment Type

Miramar College Fact Book 2012

Fall 2011 Employee Breakdown: There were a total of 753 employees working at Miramar College during Fall 2011. The largest group, over half of the Miramar employees (58%), comprised adjunct faculty, followed by non-academic hourly (16%), contract faculty (12%), and classified staff (10%). Supervisory staff and management constituted the smallest proportions of Miramar employees at 3% and 1%, respectively.

The ethnic breakdown showed that White employees comprised 62% of the total employee population, followed by Asian employees (13%), and Latino employees constituted 11% of the Miramar College workforce. Among classified staff, White employees comprised more than one-third (37%) of the employees and made up more than two-thirds of the teaching faculty positions (61% for contract and 70% for adjunct) compared to all other ethnic groups. White employees constituted more than one-third of the management (40%) positions and more than half of the supervisory (55%) positions. Asian employees comprised exactly one-fifth (20%) of the management positions and one-quarter (25%) of the supervisory positions. Latino employees comprised 20% and 5%, respectively, of the management and supervisory positions. African American employees constituted 5% of the supervisory positions.

Figure 5.1. Miramar College Fall 2011 Employees by Employment Type

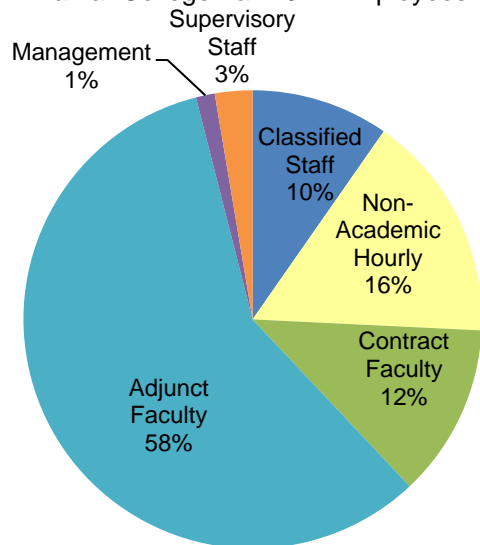
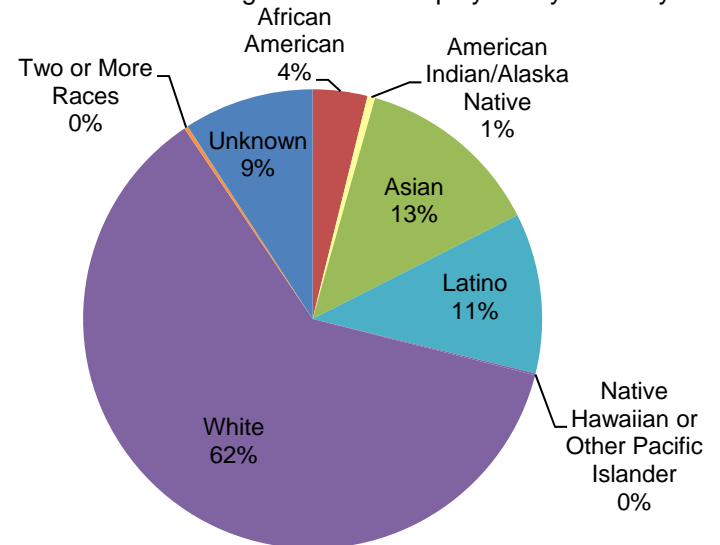


Figure 5.2. Miramar College Fall 2011 Employees by Ethnicity



Miramar College Fact Book 2012

Table 5.1. Miramar College Fall 2011 Employees by Ethnicity

	African American	American Indian/ Alaska Native	Asian	Latino	Native Hawaiian or Other Pacific Islander	White	Two or More Races	Unreported	Total								
Total Employees:	29	4%	4	1%	99	13%	85	11%	1	0%	464	62%	2	0%	69	9%	753
Male:	13	3%	4	1%	48	12%	40	10%	0	0%	267	65%	0	0%	41	10%	413
Female:	16	5%	0	0%	51	15%	45	13%	1	0%	197	58%	2	1%	28	8%	340
Classified Staff :	6	8%	0	0%	26	36%	10	14%	0	0%	27	37%	0	0%	4	5%	73
Male:	0	0%	0	0%	10	40%	2	8%	0	0%	10	40%	0	0%	3	12%	25
Female:	6	13%	0	0%	16	33%	8	17%	0	0%	17	35%	0	0%	1	2%	48
Non-Academic Hourly:	6	5%	0	0%	29	24%	16	13%	0	0%	59	49%	1	1%	10	8%	121
Male:	1	2%	0	0%	12	27%	5	11%	0	0%	23	51%	0	0%	4	9%	45
Female:	5	7%	0	0%	17	22%	11	14%	0	0%	36	47%	1	1%	6	8%	76
Contract Faculty:	4	4%	1	1%	7	8%	10	11%	0	0%	56	61%	0	0%	14	15%	92
Male:	4	7%	1	2%	3	5%	5	9%	0	0%	34	61%	0	0%	9	16%	56
Female:	0	0%	0	0%	4	11%	5	14%	0	0%	22	61%	0	0%	5	14%	36
Adjunct Faculty:	12	3%	3	1%	30	7%	46	11%	1	0%	307	70%	1	0%	37	8%	437
Male:	8	3%	3	1%	19	7%	28	10%	0	0%	193	70%	0	0%	23	8%	274
Female:	4	2%	0	0%	11	7%	18	11%	1	1%	114	70%	1	1%	14	9%	163
Management:	0	0%	0	0%	2	20%	2	20%	0	0%	4	40%	0	0%	2	20%	10
Male:	0	0%	0	0%	0	0%	0	0%	0	0%	3	60%	0	0%	2	40%	5
Female:	0	0%	0	0%	2	40%	2	40%	0	0%	1	20%	0	0%	0	0%	5
Supervisory Staff:	1	5%	0	0%	5	25%	1	5%	0	0%	11	55%	0	0%	2	10%	20
Male:	0	0%	0	0%	4	50%	0	0%	0	0%	4	50%	0	0%	0	0%	8
Female:	1	8%	0	0%	1	8%	1	8%	0	0%	7	58%	0	0%	2	17%	12

Source: SDCCD Information System

Table 5.2. Miramar College Employees by Gender and Employment Status

Gender		Employment Status	
Female	45%	Full-Time/Contract	26%
Male	55%	Hourly/Adjunct	74%

Source: SDCCD Information System