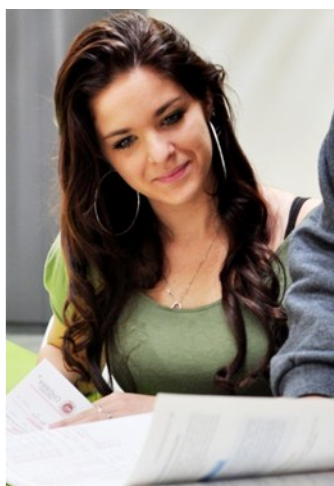


2
0
1
3

Fact Book

Mesa College



Prepared by:
Office of Institutional Research and Planning
September 2013

Mesa College Fact Book 2013

Overview & Mission	1	Annual Retention Rates	
Section I. Headcount and Student Characteristics	3	Overall	37
Section Overview	4	By Gender.....	38
Overall	5	By Ethnicity.....	39
By Gender.....	6	By Age.....	40
By Ethnicity.....	7	Annual GPA	
By Age.....	8	Overall	41
By Enrollment Status	9	By Gender.....	42
By Educational Objective	10	By Ethnicity	43
By Primary Language.....	12	By Age.....	44
By Prior Education Level	13	Annual Awards Conferred	
By Service Area of Residence	14	Overall	45
By First Generation	15	By Gender.....	46
By Residency Status.....	16	By Ethnicity.....	48
By DSPS	17	By Age.....	52
By EOPS.....	18	Annual Transfer	
By Day, Evening, & Online Status	19	Overall	55
By Military Status.....	20	By Gender.....	56
By Units Attempted by Units Earned	21	By Ethnicity.....	57
Section II. Persistence Rates	23	By Age.....	58
Section Overview	24	By CSU-UC/Private (In-state)/Out-of-State	59
Overall	25	By CSU/UC.....	60
By Gender.....	26	By Institution Type (Private vs. Public).....	61
By Ethnicity.....	27	Section IV. Productivity and Efficiency	62
By Age.....	29	Section Overview	63
Section III. Student Completion	31	FTES (Resident, Nonresident, and Overall)	64
Section Overview	32	Enrollments (Online and On Campus)	67
Annual Success Rates		Fill Rates	68
Overall	33	Load	70
By Gender.....	34	Section V. Human Resources	71
By Ethnicity.....	35	Section Overview	72
By Age.....	36	Fall 2012 Employee Breakdown.....	73

Mesa College Fact Book 2013

OVERVIEW

This Fact Book is a publication of the Office of Institutional Research and Planning for the San Diego Community College District. It is designed to serve the information needs of the college community with a primary focus on student enrollment, demographics, and outcomes.

The Fact Book is a rich source of collegewide trend information that may be used for planning and decision making. The book contains the following five sections:

- 1) **Headcount and Student Characteristics.** Provides information on student demographic characteristics (e.g., age, ethnicity, and educational objective) over five years.
- 2) **Persistence Rates.** Provides information about first-time to college students who complete a fall term and enroll in the subsequent spring and fall terms. The information is also reported by demographic characteristics of interest.
- 3) **Student Completion.** Provides information on students' successful course completion rates, retention rates, GPA, awards conferred, and transfer volume. All of the information is provided in summary form, as well as by demographic characteristics of interest.
- 4) **Productivity and Efficiency.** Provides information on annual FTES, enrollment and fill rates, and Load (WSCH/FTEF).
- 5) **Human Resources.** Provides information on the number of employees by ethnicity, gender, and employment type.

Each section contains the following benchmarks: 1) The percentage change over the five year period being reported, 2) The collegewide average, and 3) The "All Colleges" in the district averages (excludes Continuing Education).

Mesa College Fact Book 2013

Vision

San Diego Mesa College shall be a key force in our community to educate our students to shape the future.

Mission

To inspire and enable student success in an environment that is strengthened by diversity, is responsive to our communities, and fosters scholarship, leadership and responsibility.

Goals

1. To deliver and support exemplary teaching and learning in the areas of transfer education, associate degrees, career and technical education, certificates, and basic skills.
2. To provide a learning environment that maximizes student access and success, and employee well-being.
3. To respond to and meet community needs for economic and workforce development.
4. To cultivate an environment that embraces and is enhanced by diversity.

Section I

Headcount and Student Characteristics

Mesa College Fact Book 2013

This section of the Fact Book contains student headcount by various student characteristics. The headcount figures are individual count of students (unduplicated headcount) based on official census counts at the end of the semester. Drops, never attends, and cancelled classes are excluded. The headcount information is reported over a period of five years to analyze trends and establish benchmarks. Headcount information is reported by the following segments:

- 1) Overall
- 2) Gender
- 3) Ethnicity
- 4) Age
- 5) Enrollment Status
- 6) Educational Objective
- 7) Primary Language
- 8) Prior Education Level
- 9) Service Area of Residence
- 10) First Generation
- 11) Residency Status
- 12) DSPS
- 13) EOPS
- 14) Day, Evening, and Online Status
- 15) Military Status
- 16) Units Attempted by Units Earned

Mesa College Fact Book 2013

Overall Headcount: Mesa College unduplicated student headcount increased 9%, from 23,322 in Fall 2008 to 25,468 in Fall 2012. From Spring 2009 to Spring 2013, unduplicated student headcount also increased (8%). Finally, summer unduplicated headcount decreased 95%, from 12,002 in Summer 2008 to 613 in Summer 2012.

Figure 1.1. Mesa College Overall Headcount (Fall)

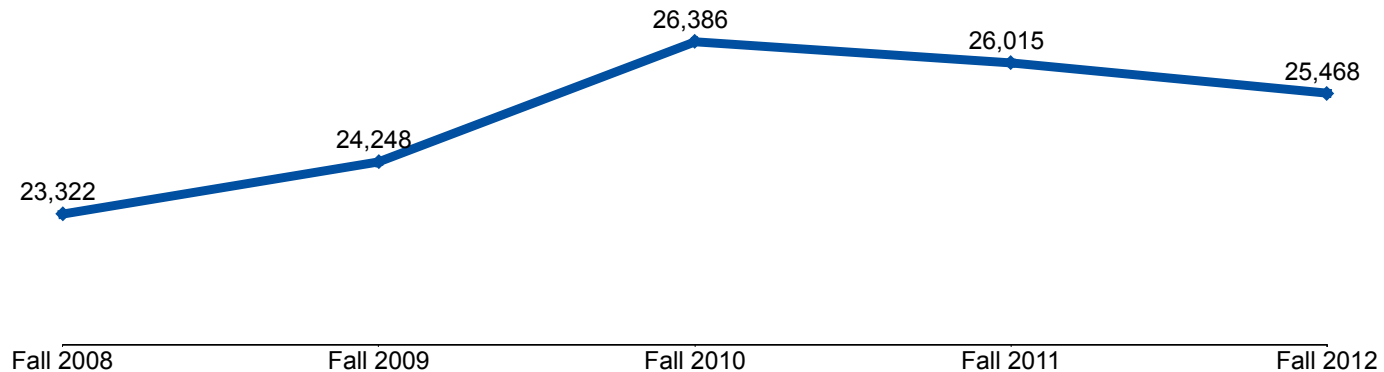


Table 1.1. Mesa College Overall Headcount (Summer, Fall, and Spring)

	Summer 08	Summer 09	Summer 10	Summer 11	Summer 12	% Change Summer 08-12
Total	12,002	11,505	9,582	660	613	-95%

	Fall 08	Fall 09	Fall 10	Fall 11	Fall 12	% Change Fall 08-12
Total	23,322	24,248	26,386	26,015	25,468	9%

	Spring 09	Spring 10	Spring 11	Spring 12	Spring 13	% Change Spring 09-13
Total	23,967	24,751	26,994	26,246	25,776	8%

Source: SDCCD Information System

Mesa College Fact Book 2013

Headcount by Gender: On average, female students represented a greater proportion of the Mesa student population (53%) than their male student counterparts (47%). Both the male and female student headcounts increased (12% & 7%, respectively) between Fall 2008 and Fall 2012.

Figure 1.2. Mesa College Headcount by Gender

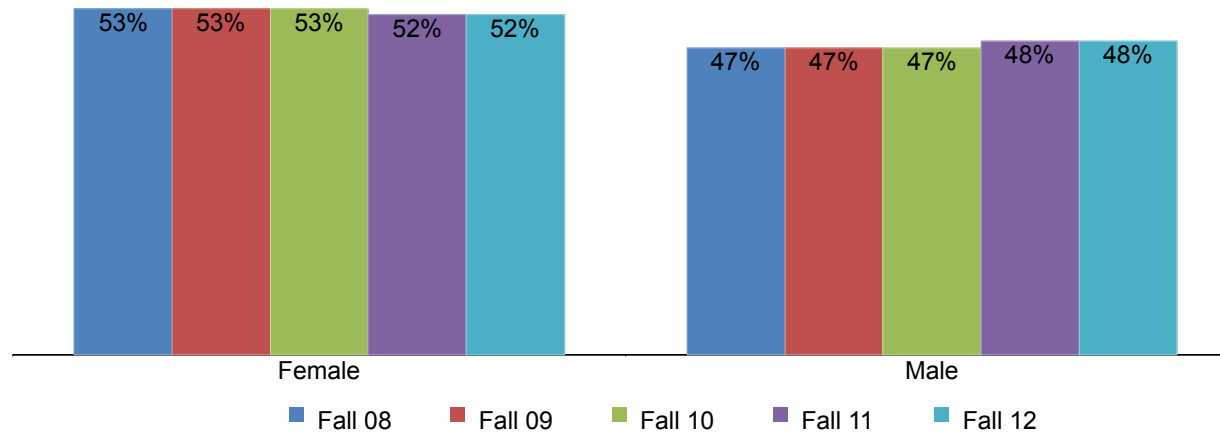


Table 1.2. Mesa College Headcount by Gender

	Fall 08		Fall 09		Fall 10		Fall 11		Fall 12		% Change Fall 08-12	College Average Fall 08-12	All Colleges Average Fall 08-12
Female	12,449	53%	12,822	53%	13,856	53%	13,545	52%	13,271	52%	7%	53%	51%
Male	10,863	47%	11,424	47%	12,529	47%	12,469	48%	12,193	48%	12%	47%	49%
Unreported	10	0%	2	0%	1	0%	1	0%	4	0%	-60%	0%	0%
Total	23,322	100%	24,248	100%	26,386	100%	26,015	100%	25,468	100%	9%	100%	100%

Source: SDCCD Information System

Mesa College Fact Book 2013

Headcount by Ethnicity: From Fall 2008 to Fall 2012, on average, White students comprised the largest percentage of the Mesa College student population (37%), followed by Latino students (25%), and Asian/Pacific Islander students (15%). Both Latino and African American student headcounts increased (67% & 16%, respectively), as did the headcount for students categorized as 'Other' ethnicities (124%). On average, White and Asian/Pacific Islander students were overrepresented at Mesa College (37% & 15%, respectively) compared to the same ethnic groups for all colleges in the district (35% & 12%, respectively). However, Latino students (25%) were underrepresented at Mesa relative to the same ethnic group for all colleges in the district (28%).

Figure 1.3. Mesa College Headcount by Ethnicity

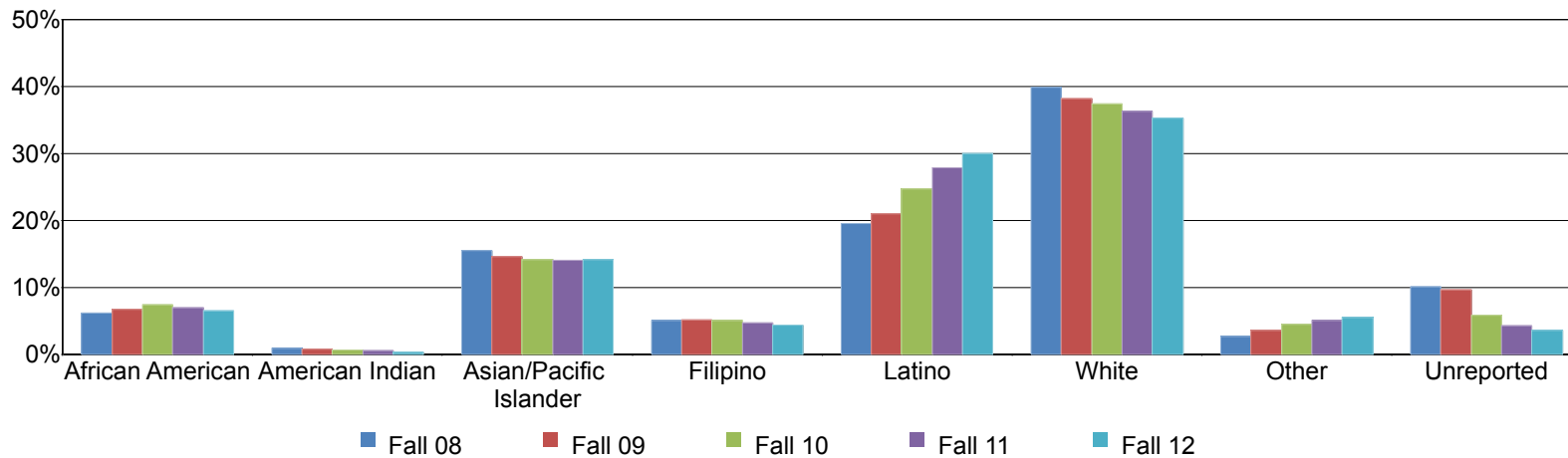


Table 1.3. Mesa College Headcount by Ethnicity

	Fall 08		Fall 09		Fall 10		Fall 11		Fall 12		% Change Fall 08-12	College Average Fall 08-12	All Colleges Average Fall 08-12
African American	1,436	6%	1,640	7%	1,971	7%	1,828	7%	1,665	7%	16%	7%	8%
American Indian	208	1%	195	1%	174	1%	156	1%	105	0%	-50%	1%	1%
Asian/Pacific Islander	3,623	16%	3,558	15%	3,756	14%	3,660	14%	3,612	14%	-0%	15%	12%
Filipino	1,183	5%	1,257	5%	1,350	5%	1,237	5%	1,126	4%	-5%	5%	5%
Latino	4,574	20%	5,101	21%	6,522	25%	7,245	28%	7,659	30%	67%	25%	28%
White	9,318	40%	9,271	38%	9,876	37%	9,454	36%	8,985	35%	-4%	37%	35%
Other	627	3%	870	4%	1,199	5%	1,331	5%	1,407	6%	124%	4%	4%
Unreported	2,353	10%	2,356	10%	1,538	6%	1,104	4%	909	4%	-61%	7%	6%
Total	23,322	100%	24,248	100%	26,386	100%	26,015	100%	25,468	100%	9%	100%	100%

Source: SDCCD Information System

Mesa College Fact Book 2013

Headcount by Age: Students between ages 18 and 24, on average, comprised over half (56%) of the Mesa student population. The number of Mesa students under 18 years of age increased 14%, from 1,205 in Fall 2008 to 1,378 in Fall 2012. However, students ages 40 to 49 displayed a decrease in headcount of 6% during the same time frame. At Mesa, students under 18 years of age and between ages 18 and 24 were overrepresented (5% and 56%, respectively) compared to the student headcount of the same age group for all colleges in the district (3% & 52%, respectively).

Figure 1.4. Mesa College Headcount by Age

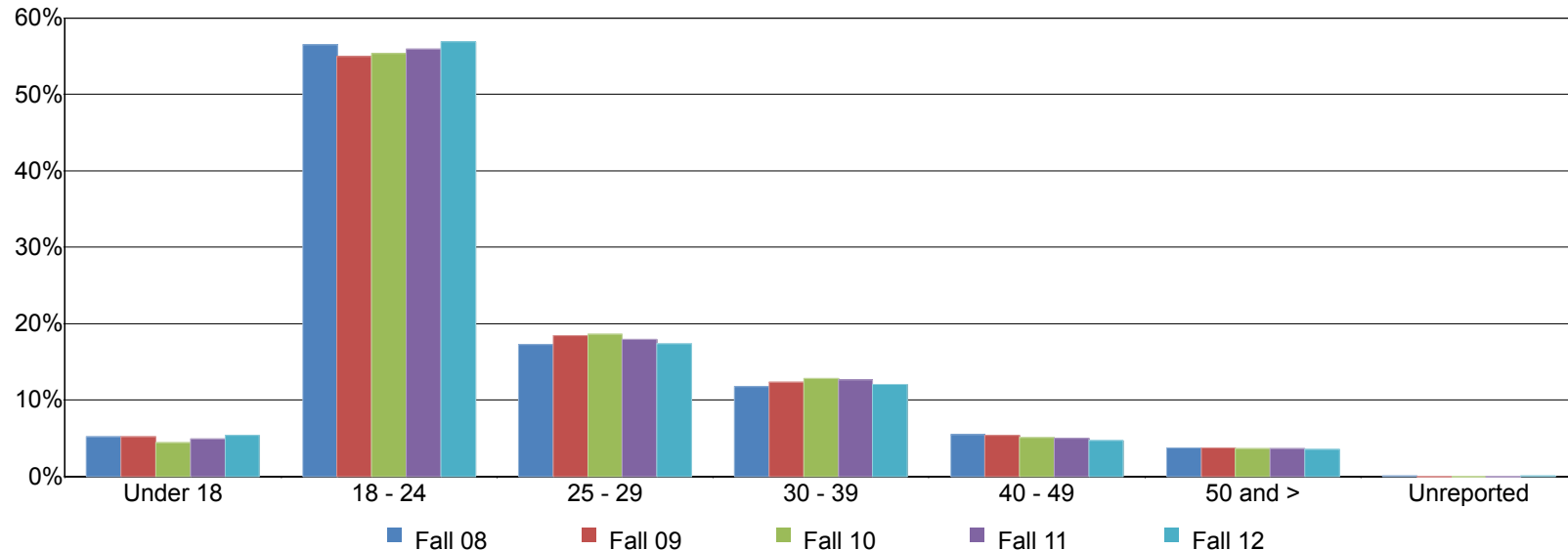


Table 1.4. Mesa College Headcount by Age

	Fall 08		Fall 09		Fall 10		Fall 11		Fall 12		% Change Fall 08-12	College Average Fall 08-12	All Colleges Average Fall 08-12
Under 18	1,205	5%	1,253	5%	1,174	4%	1,283	5%	1,378	5%	14%	5%	3%
18 - 24	13,188	57%	13,324	55%	14,611	55%	14,546	56%	14,486	57%	10%	56%	52%
25 - 29	4,034	17%	4,475	18%	4,915	19%	4,672	18%	4,427	17%	10%	18%	18%
30 - 39	2,749	12%	2,983	12%	3,378	13%	3,274	13%	3,078	12%	12%	12%	14%
40 - 49	1,269	5%	1,304	5%	1,342	5%	1,288	5%	1,192	5%	-6%	5%	7%
50 and >	869	4%	908	4%	964	4%	952	4%	903	4%	4%	4%	5%
Unreported	8	0%	1	0%	2	0%	0	0%	4	0%	-50%	0%	0%
Total	23,322	100%	24,248	100%	26,386	100%	26,015	100%	25,468	100%	9%	100%	100%

Source: SDCCD Information System

Mesa College Fact Book 2013

Headcount by Enrollment Status: On average, continuing students accounted for nearly two thirds (64%) of the Mesa College student population. Student headcount increased most notably for first-time students (23%) and returning students (12%).

Figure 1.5. Mesa College Headcount by Enrollment Status

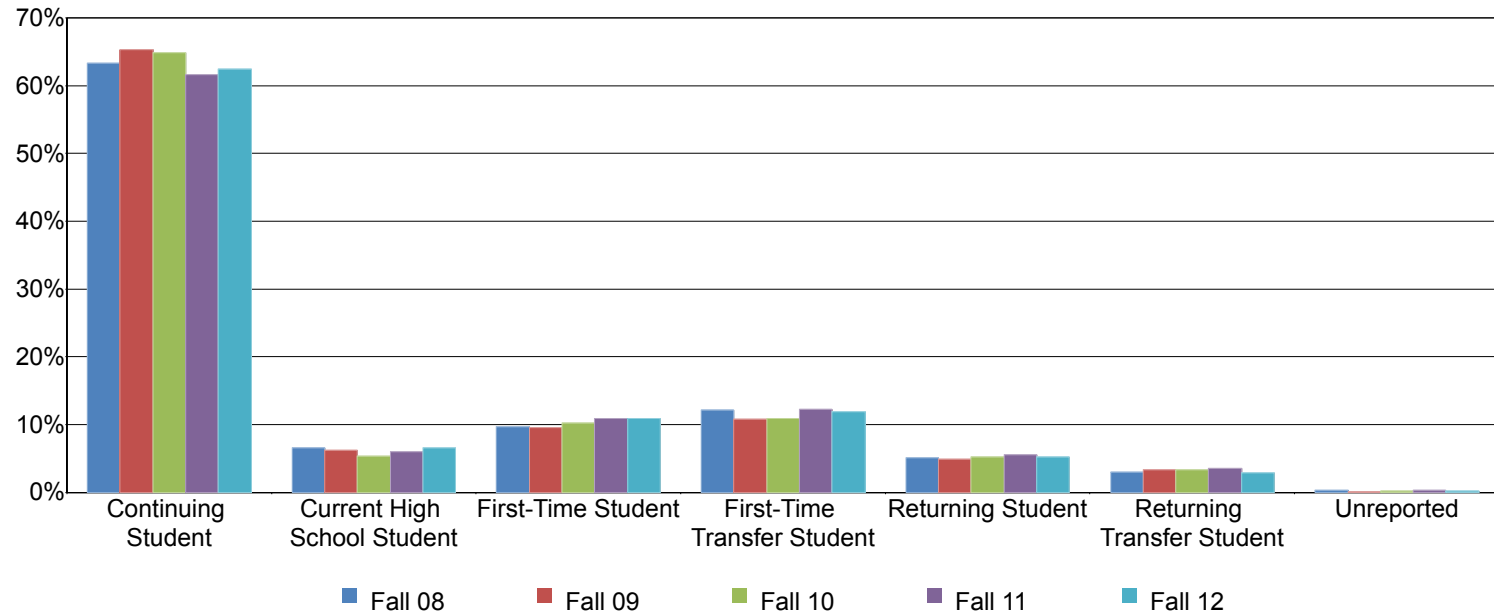


Table 1.5. Mesa College Headcount by Enrollment Status

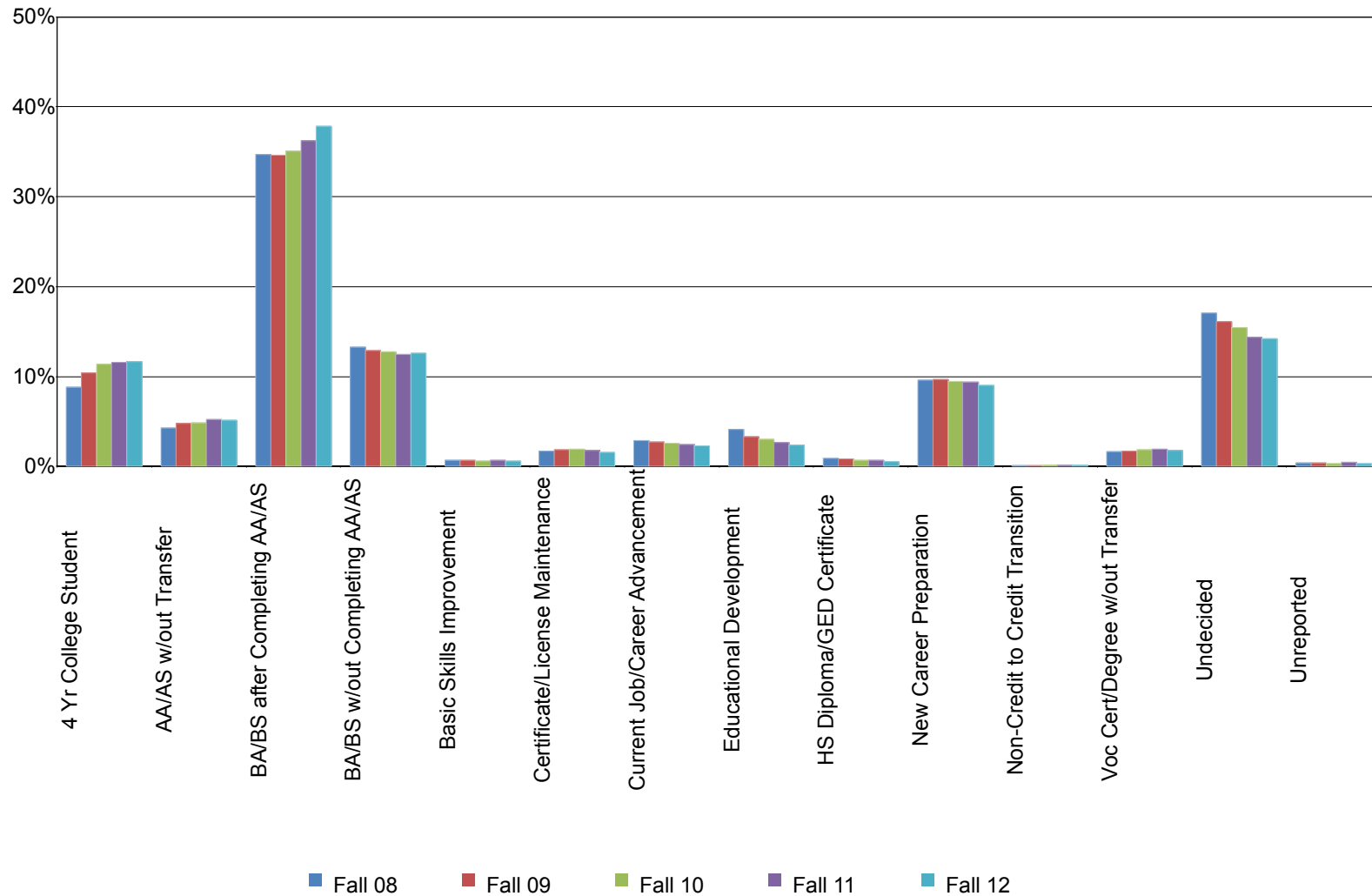
	Fall 08		Fall 09		Fall 10		Fall 11		Fall 12		% Change Fall 08-12	College Average Fall 08-12	All Colleges Average Fall 08-12
Continuing Student	14,770	63%	15,841	65%	17,122	65%	16,054	62%	15,900	62%	8%	64%	63%
Current High School Student	1,522	7%	1,499	6%	1,395	5%	1,539	6%	1,661	7%	9%	6%	4%
First-Time Student	2,260	10%	2,302	9%	2,708	10%	2,824	11%	2,771	11%	23%	10%	11%
First-Time Transfer Student	2,822	12%	2,612	11%	2,872	11%	3,178	12%	3,024	12%	7%	12%	11%
Returning Student	1,193	5%	1,178	5%	1,378	5%	1,451	6%	1,332	5%	12%	5%	7%
Returning Transfer Student	698	3%	788	3%	862	3%	906	3%	733	3%	5%	3%	4%
Unreported	57	0%	28	0%	49	0%	63	0%	47	0%	-18%	0%	0%
Total	23,322	100%	24,248	100%	26,386	100%	26,015	100%	25,468	100%	9%	100%	100%

Source: SDCCD Information System

Mesa College Fact Book 2013

Headcount by Educational Objective: From Fall 2008 to Fall 2012, nearly half of the Mesa student population (49%) declared transfer to obtain a BA/BS, with or without completing an AA/AS degree, as their educational objective. Between Fall 2008 and Fall 2012, the educational objectives that made the most gains in popularity were 4-year college student (increased by 44%), AA/AS degree without transfer (increased by 33%), and transition from non-credit to credit (increased by 26%). In contrast, students who selected educational development and obtaining a high school diploma/GED certificate as educational objectives decreased (37% & 35%, respectively).

Figure 1.6. Mesa College Headcount by Educational Objective



Mesa College Fact Book 2013

Table 1.6. Mesa College Headcount by Educational Objective

	Fall 08		Fall 09		Fall 10		Fall 11		Fall 12		% Change Fall 08-12	College Average Fall 08-12	All Colleges Average Fall 08-12
4 Yr College Student	2,056	9%	2,530	10%	2,997	11%	3,017	12%	2,968	12%	44%	11%	9%
AA/AS w/out Transfer	989	4%	1,153	5%	1,288	5%	1,359	5%	1,314	5%	33%	5%	5%
BA/BS after Completing AA/AS	8,090	35%	8,386	35%	9,245	35%	9,427	36%	9,635	38%	19%	36%	34%
BA/BS w/out Completing AA/AS	3,098	13%	3,128	13%	3,361	13%	3,236	12%	3,203	13%	3%	13%	11%
Basic Skills Improvement	150	1%	161	1%	166	1%	179	1%	152	1%	1%	1%	1%
Certificate/License Maintenance	394	2%	445	2%	498	2%	464	2%	399	2%	1%	2%	2%
Current Job/Career Advancement	670	3%	658	3%	689	3%	638	2%	588	2%	-12%	3%	4%
Educational Development	961	4%	811	3%	788	3%	696	3%	605	2%	-37%	3%	3%
HS Diploma/GED Certificate	204	1%	194	1%	188	1%	169	1%	132	1%	-35%	1%	1%
New Career Preparation	2,240	10%	2,344	10%	2,494	9%	2,443	9%	2,287	9%	2%	9%	11%
Non-Credit to Credit Transition	27	0%	23	0%	37	0%	41	0%	34	0%	26%	0%	0%
Voc Cert/Degree w/out Transfer	383	2%	412	2%	481	2%	490	2%	458	2%	20%	2%	2%
Undecided	3,973	17%	3,915	16%	4,081	15%	3,742	14%	3,620	14%	-9%	15%	16%
Unreported	87	0%	88	0%	73	0%	114	0%	73	0%	-16%	0%	1%
Total	23,322	100%	24,248	100%	26,386	100%	26,015	100%	25,468	100%	9%	100%	100%

Source: SDCCD Information System

Mesa College Fact Book 2013

Headcount by Primary Language: On average, the majority of the Mesa College student population (93%) indicated English as their primary language. This figure mirrored the average for all colleges in the district. From Fall 2008 to Fall 2012, the number of Mesa College students who indicated they spoke a language other than English increased 36%, while the number of students who indicated English as their primary language increased 8%.

Figure 1.7. Mesa College Headcount by Primary Language

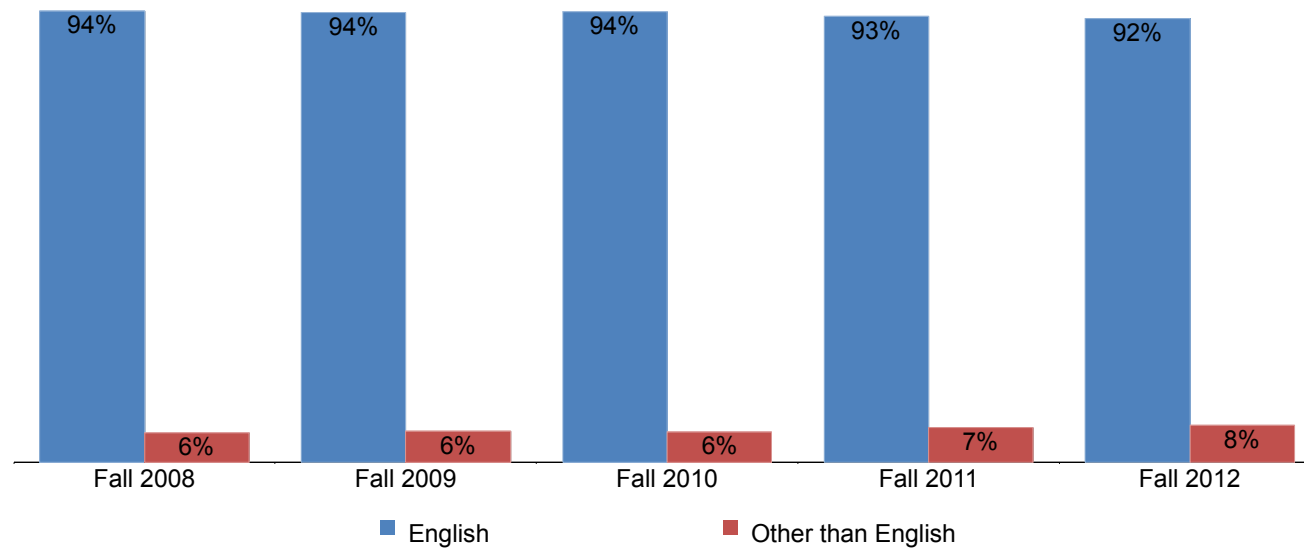


Table 1.7. Mesa College Headcount by Primary Language

	Fall 08		Fall 09		Fall 10		Fall 11		Fall 12		% Change Fall 08-12	College Average Fall 08-12	All Colleges Average Fall 08-12
English	21,882	94%	22,684	94%	24,755	94%	24,160	93%	23,528	92%	8%	93%	93%
Other than English	1,424	6%	1,562	6%	1,627	6%	1,851	7%	1,939	8%	36%	7%	7%
Unreported	16	0%	2	0%	4	0%	4	0%	1	0%	-94%	0%	0%
Total	23,322	100%	24,248	100%	26,386	100%	26,015	100%	25,468	100%	9%	100%	100%

Source: SDCCD Information System

Mesa College Fact Book 2013

Headcount by Prior Education Level: For the past five fall terms, on average, the majority of the Mesa College student population was comprised of high school graduates (68%). On average, 11% of the Mesa student population had a bachelor's degree or higher and 4% had an associate degree. Between Fall 2008 and Fall 2012, the number of Mesa students who had a foreign high school diploma increased 43%, and the number of students who had a GED/high school certificate increased 23%.

Figure 1.8. Mesa College Headcount by Prior Education Level

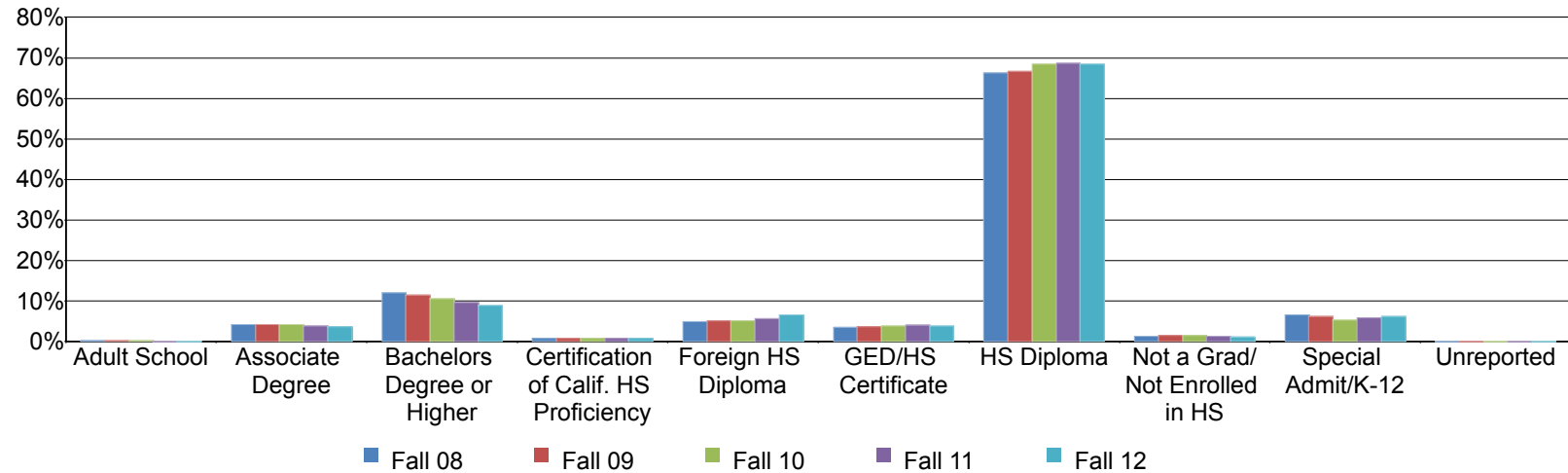


Table 1.8. Mesa College Headcount by Prior Education Level

	Fall 08		Fall 09		Fall 10		Fall 11		Fall 12		% Change Fall 08-12	College Average Fall 08-12	All Colleges Average Fall 08-12
Adult School	53	0%	54	0%	50	0%	43	0%	35	0%	-34%	0%	0%
Associate Degree	1,012	4%	1,040	4%	1,124	4%	997	4%	926	4%	-8%	4%	5%
Bachelors Degree or Higher	2,791	12%	2,777	11%	2,776	11%	2,546	10%	2,302	9%	-18%	11%	11%
Certification of Calif. HS Proficiency	186	1%	205	1%	219	1%	199	1%	195	1%	5%	1%	1%
Foreign HS Diploma	1,167	5%	1,251	5%	1,338	5%	1,461	6%	1,674	7%	43%	5%	5%
GED/HS Certificate	815	3%	889	4%	1,013	4%	1,046	4%	1,004	4%	23%	4%	5%
HS Diploma	15,457	66%	16,181	67%	18,086	69%	17,850	69%	17,447	69%	13%	68%	68%
Not a Grad/Not Enrolled in HS	313	1%	350	1%	392	1%	351	1%	290	1%	-7%	1%	2%
Special Admit/K-12	1,521	7%	1,501	6%	1,388	5%	1,522	6%	1,595	6%	5%	6%	4%
Unreported	7	0%	0	0%	0	0%	0	0%	0	0%	-100%	0%	0%
Total	23,322	100%	24,248	100%	26,386	100%	26,015	100%	25,468	100%	9%	100%	100%

Source: SDCCD Information System

Mesa College Fact Book 2013

Headcount by Service Area of Residence: Between Fall 2008 and Fall 2012, on average, about one in three Mesa College students (32%) resided within the Mesa service area. Another 27% resided in the City College service area. Thirty-one percent of the students who attended Mesa College resided outside of the SDCCCD service area.

Figure 1.9. Mesa College Headcount by Service Area of Residence

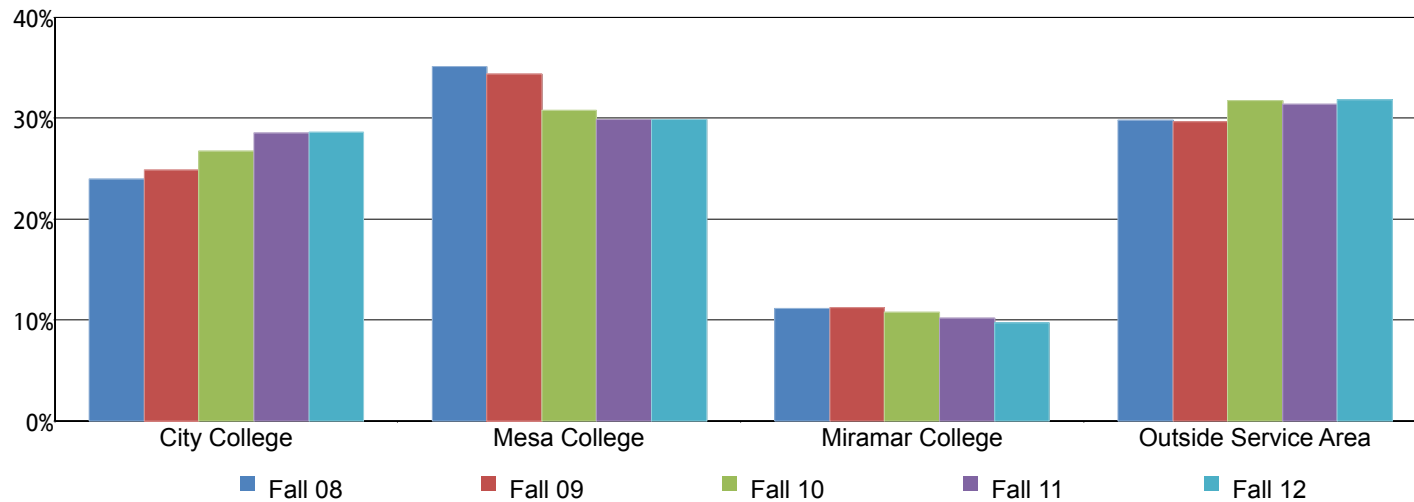


Table 1.9. Mesa College Headcount by Service Area of Residence

	Fall 08		Fall 09		Fall 10		Fall 11		Fall 12		% Change Fall 08-12	College Average Fall 08-12	All Colleges Average Fall 08-12
City College	5,584	24%	6,017	25%	7,056	27%	7,424	29%	7,271	29%	30%	27%	31%
Mesa College	8,177	35%	8,323	34%	8,123	31%	7,772	30%	7,611	30%	-7%	32%	21%
Miramar College	2,604	11%	2,719	11%	2,832	11%	2,654	10%	2,477	10%	-5%	11%	11%
Outside Service Area	6,950	30%	7,189	30%	8,375	32%	8,165	31%	8,109	32%	17%	31%	37%
Unreported	7	0%	0	0%	0	0%	0	0%	0	0%	-100%	0%	0%
Total	23,322	100%	24,248	100%	26,386	100%	26,015	100%	25,468	100%	9%	100%	100%

Source: SDCCD Information System

Mesa College Fact Book 2013

Headcount by First Generation: From Fall 2008 to Fall 2012, on average, one quarter (25%) of Mesa students indicated they were first generation college students. During the same time frame, the number of students who indicated they were first generation college students increased 23%, and a 6% increase for students who indicated they were not first generation college students.

Figure 1.10. Mesa College Headcount by First Generation

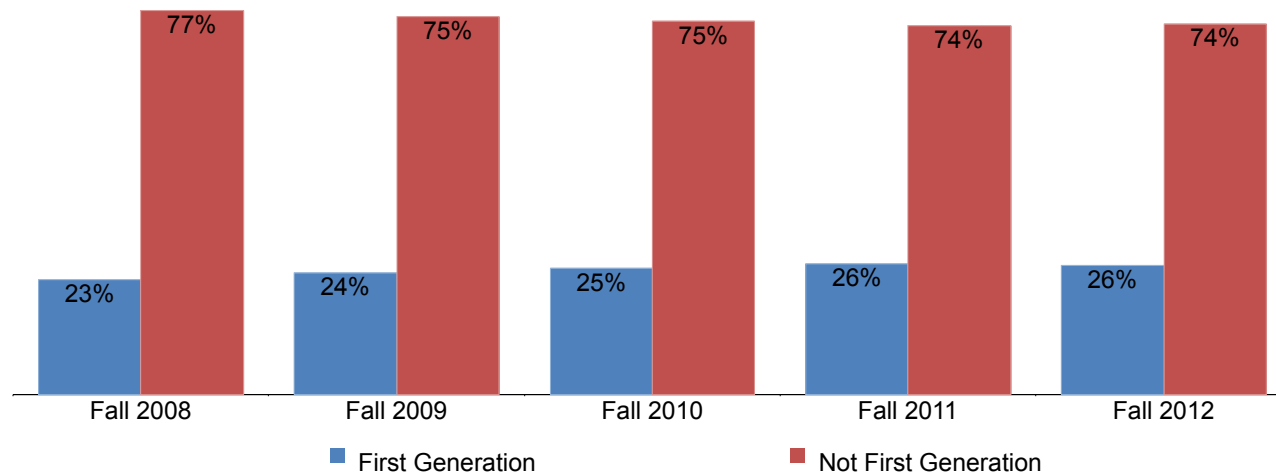


Table 1.10. Mesa College Headcount by First Generation

	Fall 08		Fall 09		Fall 10		Fall 11		Fall 12		% Change Fall 08-12	College Average Fall 08-12	All Colleges Average Fall 08-12
First Generation	5,352	23%	5,898	24%	6,646	25%	6,794	26%	6,580	26%	23%	25%	27%
Not First Generation	17,879	77%	18,301	75%	19,699	75%	19,190	74%	18,863	74%	6%	75%	73%
Unreported	91	0%	49	0%	41	0%	31	0%	25	0%	-73%	0%	0%
Total	23,322	100%	24,248	100%	26,386	100%	26,015	100%	25,468	100%	9%	100%	100%

Source: SDCCD Information System

Mesa College Fact Book 2013

Headcount by Residency Status: Over the past five fall terms, on average 95% of Mesa College’s students were California residents and just 5% were non-residents. Between Fall 2008 and Fall 2012, the number of students who were non-residents increased 36%, and the number of students who were residents increased 8%.

Figure 1.11. Mesa College Headcount by Residency Status

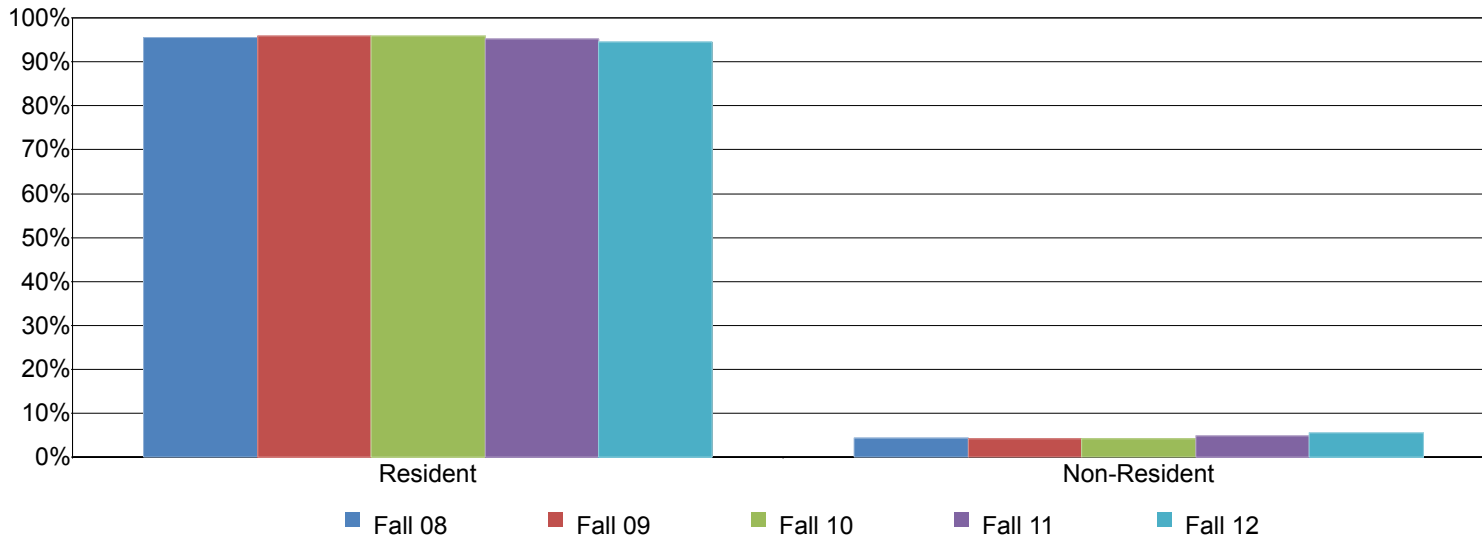


Table 1.11. Mesa College Headcount by Residency Status

	Fall 08		Fall 09		Fall 10		Fall 11		Fall 12		% Change Fall 08-12	College Average Fall 08-12	All Colleges Average Fall 08-12
Resident	22,301	96%	23,259	96%	25,314	96%	24,767	95%	24,086	95%	8%	95%	96%
Non-Resident	1,014	4%	989	4%	1,072	4%	1,248	5%	1,382	5%	36%	5%	4%
Unreported	7	0%	0	0%	0	0%	0	0%	0	0%	-100%	0%	0%
Total	23,322	100%	24,248	100%	26,386	100%	26,015	100%	25,468	100%	9%	100%	100%

Source: SDCCD Information System

Mesa College Fact Book 2013

Headcount by Disability Support Programs and Services (DSPS): On average, 3% of the Mesa College student population received disability support services over the past five fall terms. This was comparable to the percentage of students served by DSPS for all colleges in the district. Between Fall 2008 and Fall 2012, the number of students who received disability services increased 37%, and the number of students who did not receive services increased 8% during the same time period.

Figure 1.12. Mesa College Headcount by Disability Support Programs and Services (DSPS)

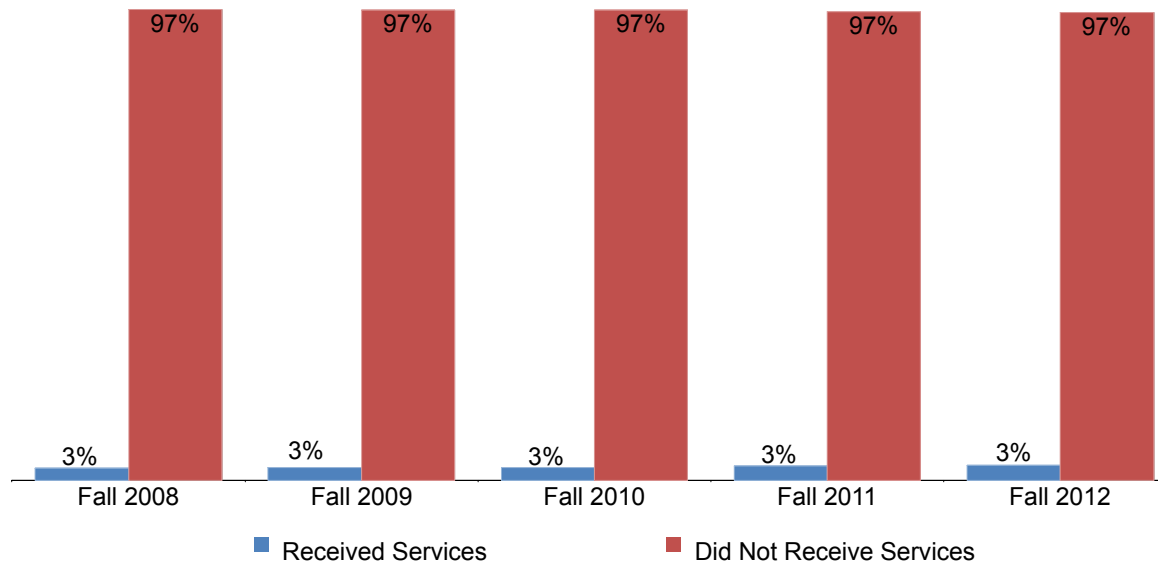


Table 1.12. Mesa College Headcount by Disability Support Programs and Services (DSPS)

	Fall 08		Fall 09		Fall 10		Fall 11		Fall 12		% Change Fall 08-12	College Average Fall 08-12	All Colleges Average Fall 08-12
Received Services	591	3%	638	3%	710	3%	785	3%	808	3%	37%	3%	3%
Did Not Receive Services	22,731	97%	23,610	97%	25,676	97%	25,230	97%	24,660	97%	8%	97%	97%
Total	23,322	100%	24,248	100%	26,386	100%	26,015	100%	25,468	100%	9%	100%	100%

Source: SDCCD Information System

Mesa College Fact Book 2013

Headcount by Extended Opportunity Programs and Services (EOPS): Between Fall 2008 and Fall 2012, on average, 3% of the Mesa student population received EOPS services. This was comparable to the percentage of students served by EOPS for all colleges in the district. Over the past five fall terms, students who received EOPS services decreased 10%, while the number of students who did not receive EOPS services increased 10%.

Figure 1.13. Mesa College Headcount by Extended Opportunity Programs and Services (EOPS)

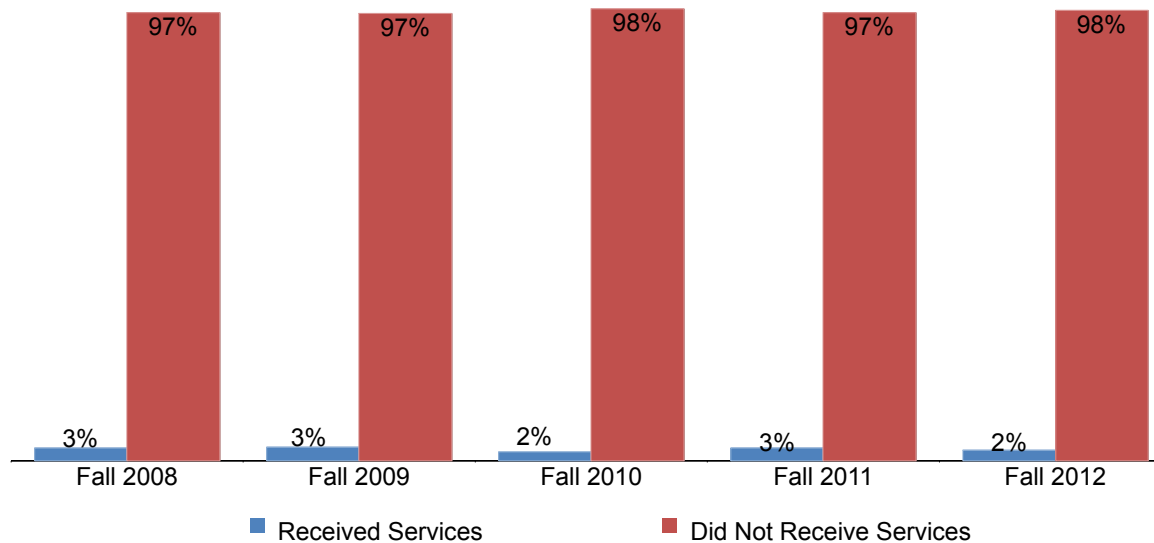


Table 1.13. Mesa College Headcount by Extended Opportunity Programs and Services (EOPS)

	Fall 08		Fall 09		Fall 10		Fall 11		Fall 12		% Change Fall 08-12	College Average Fall 08-12	All Colleges Average Fall 08-12
Received Services	660	3%	728	3%	554	2%	732	3%	595	2%	-10%	3%	3%
Did Not Receive Services	22,662	97%	23,520	97%	25,832	98%	25,283	97%	24,873	98%	10%	97%	97%
Total	23,322	100%	24,248	100%	26,386	100%	26,015	100%	25,468	100%	9%	100%	100%

Source: SDCCD Information System

Mesa College Fact Book 2013

Headcount by Day, Evening, & Online Status: On average from Fall 2008 to Fall 2012, nearly half of Mesa College student population (47%) took day courses exclusively. Approximately one in five students (18%) took day and evening courses. From Fall 2008 to Fall 2012, the number of students that took evening courses exclusively decreased 12%. In contrast, students that took day and evening classes increased 22%, the number of students who took both on-campus and online courses increased 21%, and the number of students who took online courses only increased 17%.

Figure 1.14. Mesa College Headcount by Day, Evening, & Online Status

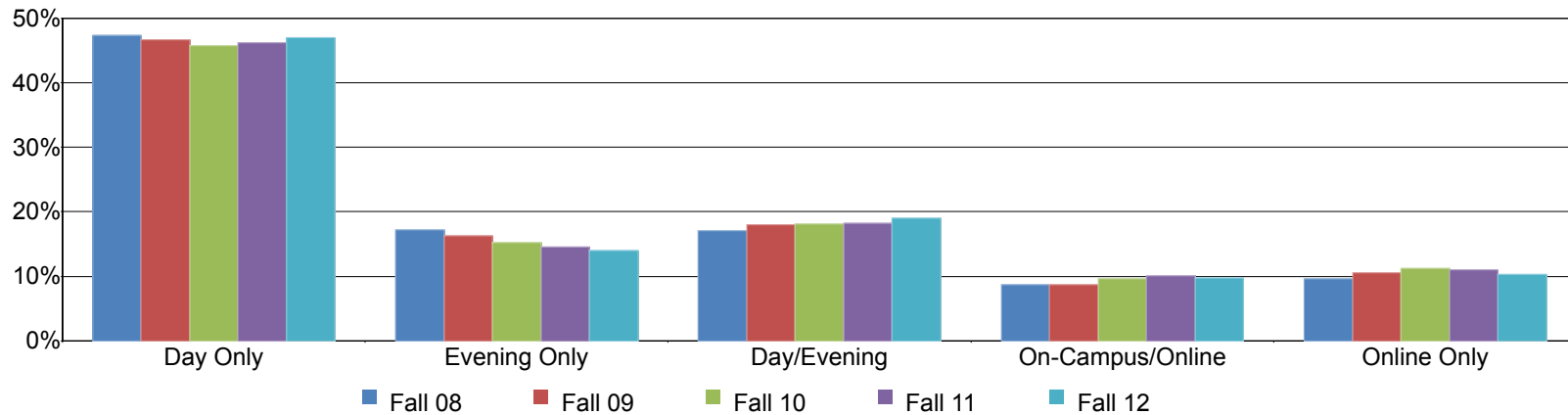


Table 1.14. Mesa College Headcount by Day, Evening, & Online Status

	Fall 08		Fall 09		Fall 10		Fall 11		Fall 12		% Change Fall 08-12	College Average Fall 08-12	All Colleges Average Fall 08-12
Day Only	11,060	47%	11,309	47%	12,082	46%	12,026	46%	11,980	47%	8%	47%	41%
Evening Only	4,013	17%	3,935	16%	4,020	15%	3,784	15%	3,540	14%	-12%	15%	15%
Day/Evening	3,971	17%	4,362	18%	4,786	18%	4,736	18%	4,846	19%	22%	18%	21%
On-Campus/Online	2,036	9%	2,097	9%	2,545	10%	2,619	10%	2,471	10%	21%	9%	15%
Online Only	2,242	10%	2,545	10%	2,953	11%	2,850	11%	2,631	10%	17%	11%	8%
Total	23,322	100%	24,248	100%	26,386	100%	26,015	100%	25,468	100%	9%	100%	100%

Source: SDCCD Information System

Mesa College Fact Book 2013

Headcount by Military Status: Over the past five fall terms, an average, 7% of Mesa College students were active duty military or veterans, and another 4% were dependents. Between Fall 2008 and Fall 2012, the number of activity duty military and veteran students increased 67%, while the number of non-military students increased 7%, and the number of dependents decreased by 4%.

Figure 1.15. Mesa College Headcount by Military Status

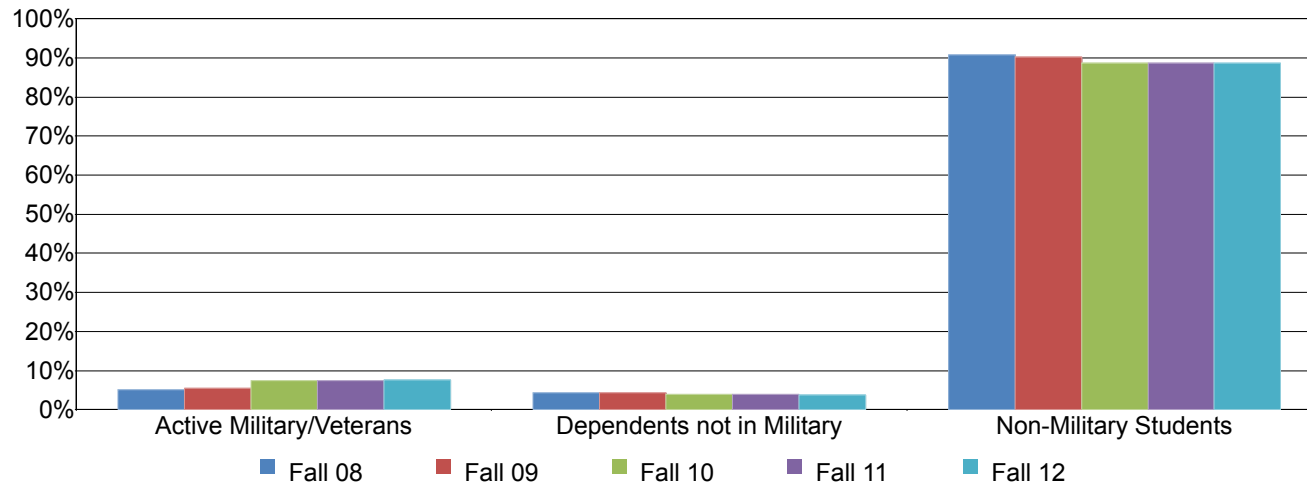


Table 1.15. Mesa College Headcount by Military Status

	Fall 08		Fall 09		Fall 10		Fall 11		Fall 12		% Change Fall 08-12	College Average Fall 08-12	All Colleges Average Fall 08-12
Active Military/Veterans	1,173	5%	1,351	6%	1,962	7%	1,953	8%	1,958	8%	67%	7%	7%
Dependents not in Military	1,000	4%	1,038	4%	1,040	4%	1,023	4%	964	4%	-4%	4%	4%
Non-Military Students	21,149	91%	21,859	90%	23,384	89%	23,039	89%	22,546	89%	7%	89%	89%
Total	23,322	100%	24,248	100%	26,386	100%	26,015	100%	25,468	100%	9%	100%	100%

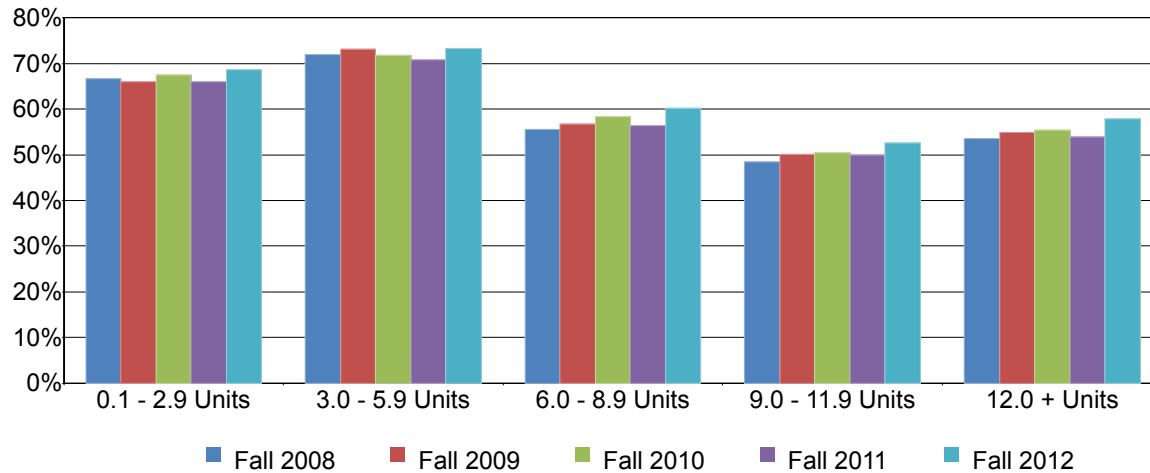
Source: SDCCD Information System

Note. The Dependents not in Military category consists of dependents/spouses of military personnel that are not an active military/veteran.

Mesa College Fact Book 2013

Headcount by Units Attempted by Units Earned: Table 1.16 shows the interplay between units attempted (in rows) and units earned (in columns). On average, the greatest proportion of students who earned all of the units they attempted were those students in the 3.0 to 5.9 unit range (72%). The smallest proportion of students who earned all the units they attempted were those students in the 9.0 to 11.9 unit range (50%). The number of students who attempted and earned 6.0 to 8.9 units and the number of students who attempted and earned 9.0 to 11.9 units increased 29% (each), while the number of students who attempted and earned between 0.1 and 2.9 units decreased 17% between Fall 2008 and Fall 2012.

Figure 1.16. Mesa College Headcount by Units Attempted by Units Earned



Mesa College Fact Book 2013

Table 1.16. Mesa College Headcount by Units Attempted by Units Earned

		Units Earned						
		0 Units	0.1 - 2.9 Units	3.0 - 5.9 Units	6.0 - 8.9 Units	9.0 - 11.9 Units	12.0 + Units	
Units Attempted	Fall 2008	0.1 - 2.9 Units	33%	67%				
		3.0 - 5.9 Units	27%	1%	72%			
		6.0 - 8.9 Units	19%	2%	23%	56%		
		9.0 - 11.9 Units	15%	2%	15%	20%	48%	
		12.0 + Units	8%	1%	8%	12%	19%	54%
Fall 2009	0.1 - 2.9 Units	34%	66%					
	3.0 - 5.9 Units	26%	1%	73%				
	6.0 - 8.9 Units	19%	2%	23%	57%			
	9.0 - 11.9 Units	14%	1%	14%	21%	50%		
	12.0 + Units	7%	1%	7%	12%	18%	55%	
Fall 2010	0.1 - 2.9 Units	33%	67%					
	3.0 - 5.9 Units	27%	2%	72%				
	6.0 - 8.9 Units	19%	2%	21%	58%			
	9.0 - 11.9 Units	15%	2%	13%	20%	50%		
	12.0 + Units	8%	1%	7%	11%	18%	55%	
Fall 2011	0.1 - 2.9 Units	34%	66%					
	3.0 - 5.9 Units	28%	1%	71%				
	6.0 - 8.9 Units	19%	2%	23%	56%			
	9.0 - 11.9 Units	14%	1%	14%	20%	50%		
	12.0 + Units	7%	1%	7%	12%	18%	54%	
Fall 2012	0.1 - 2.9 Units	31%	69%					
	3.0 - 5.9 Units	25%	1%	73%				
	6.0 - 8.9 Units	17%	1%	21%	60%			
	9.0 - 11.9 Units	13%	1%	13%	20%	53%		
	12.0 + Units	6%	1%	6%	11%	18%	58%	
% Change Fall 08-12		---	-17%	9%	29%	29%	18%	
College Average Fall 08-12		---	67%	72%	58%	50%	55%	

Source: SDCCD Information System

Note. Percent change and average were based on counts.

Section II Persistence Rates

Mesa College Fact Book 2013

This section of the Fact Book contains information on the term and annual persistence rates for first-time to college students. For purposes of this report, the term persistence rate is the percentage of official census enrolled first-time to college students in a fall term who received a grade notation of A, B, C, D, F, P, NP, I, or RD then enrolled in at least one course in the subsequent spring term, and received a grade notation of A, B, C, D, F, P, NP, I, or RD. Annual persistence follows the same operational definition, however this tracks the student from fall to spring to fall enrollment.

Exclusions for both term and annual persistence are as follows: SDSU and UCSD-only students and sections, intersession, tutoring, in-service, and cancelled classes.

The information in this section includes five years of data and is reported as follows:

- 1) Overall
- 2) Gender
- 3) Ethnicity
- 4) Age

Mesa College Fact Book 2013

Overall Persistence: Over the past five fall terms, an average of 71% of first-time students persisted to the subsequent spring term, and 47% persisted to the following fall term. Mesa College's persistence rates were, on average, slightly lower than the term and annual persistence rates of first-time students enrolled in all colleges in the district (74% & 51%, respectively). Overall, Mesa College's first-time student term persistence rates increased 9% from the Fall 2007 cohort to the Fall 2012 cohort. Annual persistence rates increased by 10% from the Fall 2007 cohort to the Fall 2011 cohort.

Figure 2.1. Mesa College First-Time Student Overall Annual Persistence

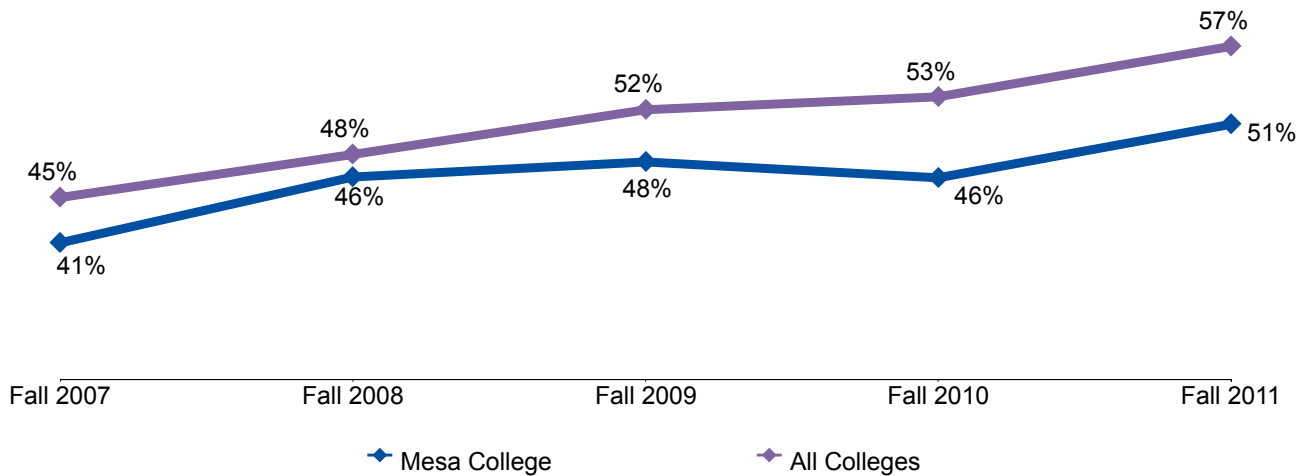


Table 2.1. Mesa College First-Time Student Overall Term and Annual Persistence

Cohort	Fall Enrolled Cohort	Term Persistence Counts	Term Persistence Rates	Annual Persistence Counts	Annual Persistence Rates	All Colleges Term Persistence	All Colleges Annual Persistence
Fall 2007	1,638	1,057	65%	673	41%	66%	45%
Fall 2008	1,697	1,161	68%	787	46%	69%	48%
Fall 2009	1,809	1,253	69%	861	48%	72%	52%
Fall 2010	2,219	1,568	71%	1,028	46%	76%	53%
Fall 2011	2,318	1,710	74%	1,174	51%	78%	57%
Fall 2012	2,320	1,718	74%	0	---	79%	---
Total/Average	12,001	8,467	71%	4,523	47%	74%	51%

Source: SDCCD Information System

Note. Overall annual persistence counts and rates exclude the Fall 2012 cohort due to the unavailability of Fall 2013 data.

Mesa College Fact Book 2013

Annual Persistence by Gender: Between the Fall 2007 and Fall 2011 cohorts, annual persistence rates were higher, on average, for female students (49%) than male students (45%). Persistence rates increased 10% for both groups from the Fall 2007 to the Fall 2011 cohort.

Figure 2.2. Mesa College First-Time Student Annual Persistence by Gender

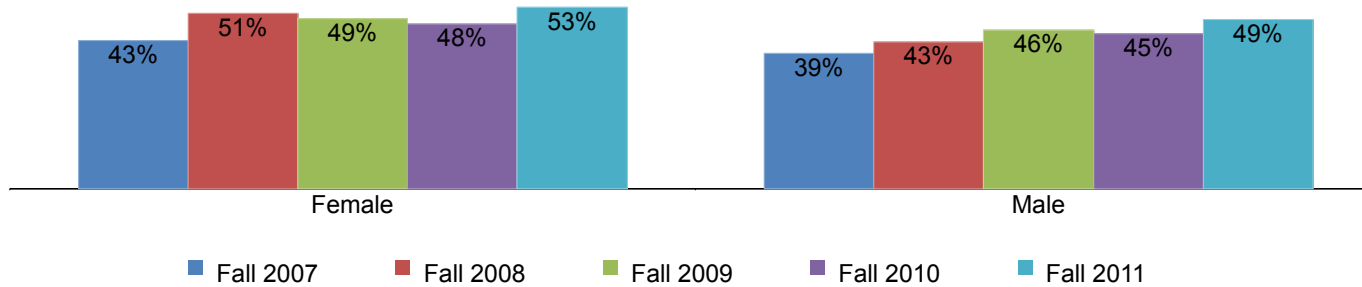


Table 2.2. Mesa College First-Time Student Annual Persistence by Gender

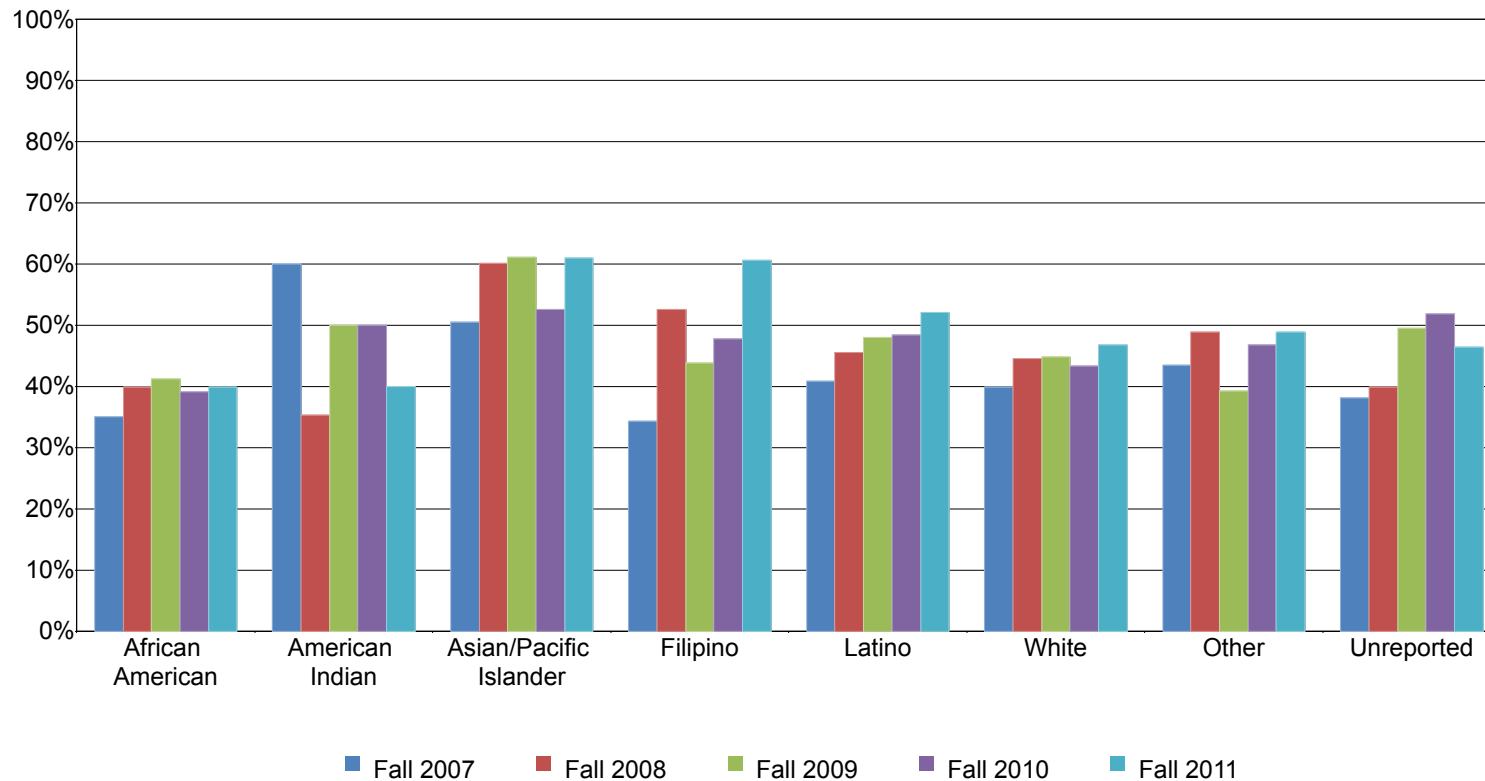
Cohort	Female			Male		
	Fall Enrolled Cohort	Annual Persistence Counts	Annual Persistence Rates	Fall Enrolled Cohort	Annual Persistence Counts	Annual Persistence Rates
Fall 2007	803	345	43%	835	328	39%
Fall 2008	799	405	51%	897	382	43%
Fall 2009	851	420	49%	958	441	46%
Fall 2010	1,056	505	48%	1,163	523	45%
Fall 2011	1,034	543	53%	1,284	631	49%
Total/Average	4,543	2,218	49%	5,137	2,305	45%

Source: SDCCD Information System

Mesa College Fact Book 2013

Annual Persistence by Ethnicity: The ethnic groups with the highest annual persistence rates, on average, were Asian/Pacific Islander students (57%), Filipino students (49%), and Latino students (48%). From the Fall 2007 cohort to the Fall 2011 cohort, persistence rates increased for all ethnic groups except American Indian students. Filipino students saw the greatest increase in persistence rates (27%), followed by Asian/Pacific Islander students and Latino students (11% each).

Figure 2.3. Mesa College First-Time Student Annual Persistence by Ethnicity



Mesa College Fact Book 2013

Table 2.3. Mesa College First-Time Student Annual Persistence by Ethnicity

Cohort	African American			American Indian			Asian/Pacific Islander			Filipino		
	Fall Enrolled Cohort	Annual Persistence Counts	Annual Persistence Rates	Fall Enrolled Cohort	Annual Persistence Counts	Annual Persistence Rates	Fall Enrolled Cohort	Annual Persistence Counts	Annual Persistence Rates	Fall Enrolled Cohort	Annual Persistence Counts	Annual Persistence Rates
Fall 2007	134	47	35%	15	9	60%	220	111	50%	67	23	34%
Fall 2008	108	43	40%	17	6	35%	203	122	60%	78	41	53%
Fall 2009	160	66	41%	10	5	50%	247	151	61%	73	32	44%
Fall 2010	174	68	39%	10	5	50%	234	123	53%	88	42	48%
Fall 2011	143	57	40%	10	4	40%	264	161	61%	89	54	61%
Total/Average	719	281	39%	62	29	47%	1,168	668	57%	395	192	49%

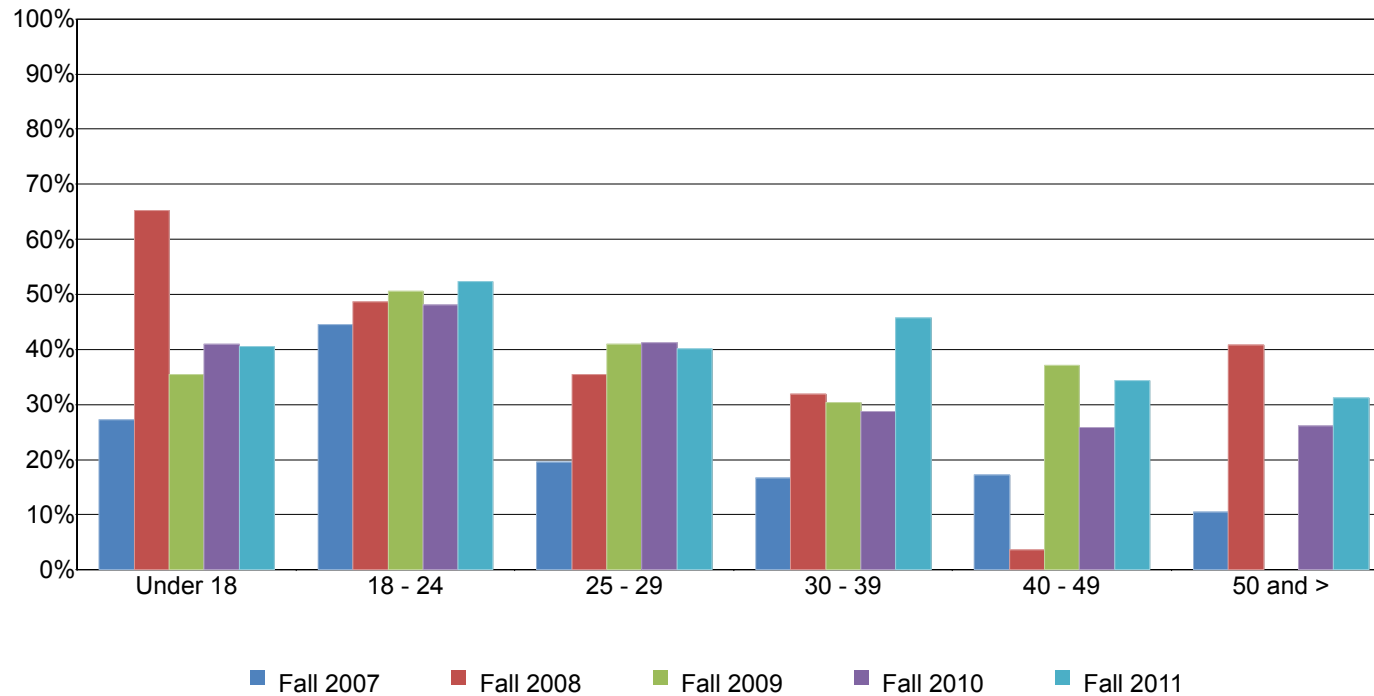
Cohort	Latino			White			Other			Unreported		
	Fall Enrolled Cohort	Annual Persistence Counts	Annual Persistence Rates	Fall Enrolled Cohort	Annual Persistence Counts	Annual Persistence Rates	Fall Enrolled Cohort	Annual Persistence Counts	Annual Persistence Rates	Fall Enrolled Cohort	Annual Persistence Counts	Annual Persistence Rates
Fall 2007	394	161	41%	645	257	40%	53	23	43%	110	42	38%
Fall 2008	408	186	46%	703	313	45%	47	23	49%	133	53	40%
Fall 2009	490	235	48%	650	291	45%	74	29	39%	105	52	50%
Fall 2010	804	389	48%	743	322	43%	139	65	47%	27	14	52%
Fall 2011	881	459	52%	719	336	47%	184	90	49%	28	13	46%
Total/Average	2,977	1,430	48%	3,460	1,519	44%	497	230	46%	403	174	43%

Source: SDCCD Information System

Mesa College Fact Book 2013

Annual Persistence by Age: A general trend showed as age increased, persistence rates decreased. Annual persistence rates were greatest, on average, for students between 18 and 24 years of age and students under 18 years of age and (49% & 41%, respectively). Moreover, persistence rates increased for all age groups between the Fall 2007 and Fall 2011 cohorts. Students age 30 to 39 showed the greatest improvement in persistence rates (29%), followed by both students age 50 years and over and 25-29 (20% each).

Figure 2.4. Mesa College First-Time Student Annual Persistence by Age



Mesa College Fact Book 2013

Table 2.4. Mesa College First-Time Student Annual Persistence by Age

Cohort	Under 18			18 - 24			25 - 29		
	Fall Enrolled Cohort	Annual Persistence Counts	Annual Persistence Rates	Fall Enrolled Cohort	Annual Persistence Counts	Annual Persistence Rates	Fall Enrolled Cohort	Annual Persistence Counts	Annual Persistence Rates
Fall 2007	22	6	27%	1,421	633	45%	87	17	20%
Fall 2008	23	15	65%	1,434	697	49%	113	40	35%
Fall 2009	48	17	35%	1,491	754	51%	137	56	41%
Fall 2010	44	18	41%	1,910	919	48%	131	54	41%
Fall 2011	42	17	40%	2,003	1,047	52%	152	61	40%
Total/Average	179	73	41%	8,259	4,050	49%	620	228	37%

Cohort	30 - 39			40 - 49			50 and >		
	Fall Enrolled Cohort	Annual Persistence Counts	Annual Persistence Rates	Fall Enrolled Cohort	Annual Persistence Counts	Annual Persistence Rates	Fall Enrolled Cohort	Annual Persistence Counts	Annual Persistence Rates
Fall 2007	60	10	17%	29	5	17%	19	2	11%
Fall 2008	72	23	32%	28	1	4%	27	11	41%
Fall 2009	79	24	30%	27	10	37%	27	0	---
Fall 2010	80	23	29%	31	8	26%	23	6	26%
Fall 2011	70	32	46%	35	12	34%	16	5	31%
Total/Average	361	112	31%	150	36	24%	112	24	21%

Source: SDCCD Information System

**Section III
Student Completion**

Mesa College Fact Book 2013

This section of the Fact Book contains information on various student completion outcomes which may be considered indirect assessments of student learning. The outcomes included in this section are: 1) Annual Successful Course Completion Rates, 2) Annual Retention Rates, 3) Annual GPA, 4) Annual Awards Conferred, and 5) Annual Transfer Volume. All of the information in this section includes five years of data by gender, age, and ethnicity. The following describes in detail each of the outcomes listed.

- 1) Successful Course Completion Rates. The first outcome reported in this section is successful course completion, or student success rate. For purposes of this report, the success rate is the percentage of students who complete a course with a grade of A, B, C, or P out of total official census enrollments. Tutoring, non-credit, and cancelled classes are excluded.
- 2) Retention Rates. The second outcome reported in this section is retention rate. For purposes of this report, the retention rate is the percentage of students who complete a course with a grade of A, B, C, D, F, P, NP, I or RD out of total official census enrollments. Tutoring and cancelled classes are excluded.
- 3) Annual GPA. The third outcome reported in this section is annual GPA. For purposes of this report, the annual GPA is the total grade point average of all classes for a given academic year.
- 4) Annual Awards Conferred. The fourth outcome reported in this section is the annual awards conferred. For purposes of this report, the annual awards conferred are the total number of associate degrees and certificates awarded in a single academic year (summer, fall, and spring). *Note: Annual awards conferred that are reported in this Fact Book are considered preliminary data. Please see the upcoming Awards Conferred Supplement report for final annual awards conferred numbers.*
- 5) Annual Transfer Volume. The last outcome reported in this section is the number of students who transfer annually. For the purposes of this report, the annual transfer volume represents the total number of students who transferred to a 4-year institution and were enrolled at an SDCCD college at any time within three semesters prior to transferring (including stop outs). The student must also have completed 12 or more transferrable units from any one of the SDCCD credit colleges within six years prior to transferring to a 4-year institution. *Note: Transfer volume that is reported in this Fact Book are considered preliminary data. Please see the upcoming Spring 2014 SDCCD Transfer Report: A Longitudinal Perspective for final transfer volume numbers.*

Mesa College Fact Book 2013

Overall Success Rates: Mesa College annual success rates increased slightly from 2008/09 to 2012/13, with a five-year average of 68%. This success rate average was equal to the success rate average of all colleges in the district (68%). The Mesa College annual success rates were generally similar to the annual success rates of all colleges in the district between 2008/09 and 2012/13.

Figure 3.1. Mesa College Overall Success Rates

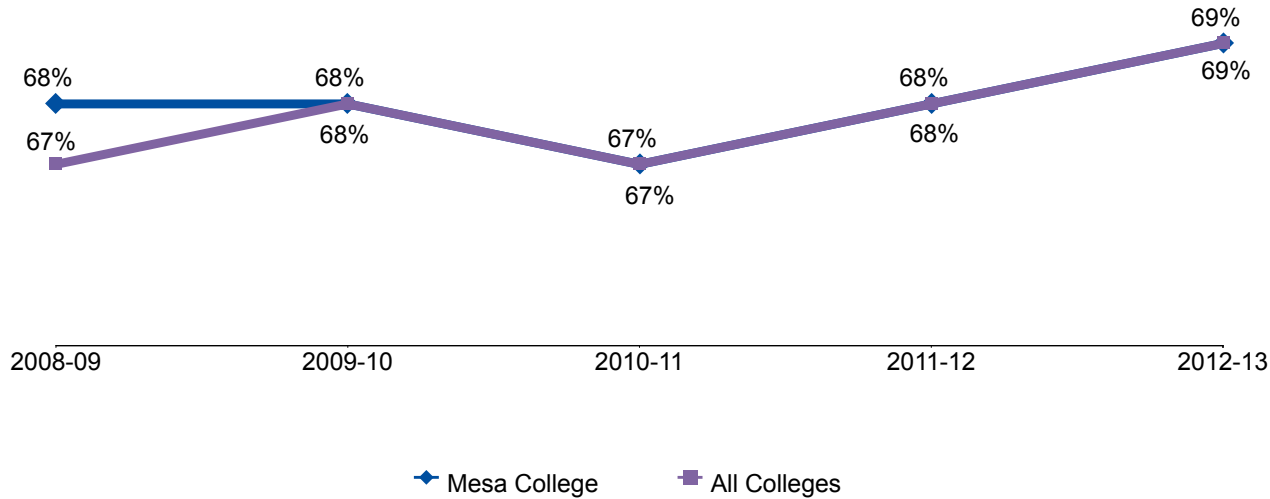


Table 3.1. Mesa College Overall Success Rates

	2008-09	2009-10	2010-11	2011-12	2012-13	% Difference 08/09 - 12/13	College Average 08/09 - 12/13	All Colleges Average 08/09 - 12/13
Average	68%	68%	67%	68%	69%	1%	68%	68%

Source: SDCCD Information System

Mesa College Fact Book 2013

Success Rates by Gender: On average, female students had higher success rates (70%) than their male student counterparts (66%) between 2008/09 and 2012/13. At Mesa College, both male and female student average success rates were comparable to the average success rates of the male and female populations of all colleges in the district (67% & 68%, respectively). Female students at Mesa College had a higher average success rate than the average success rates of the general student populations of both Mesa and all colleges in the district (68% each). However, the average success rate for male students at Mesa was slightly lower than the average success rates for the Mesa general student population and all colleges in the district.

Figure 3.2. Mesa College Success Rates by Gender

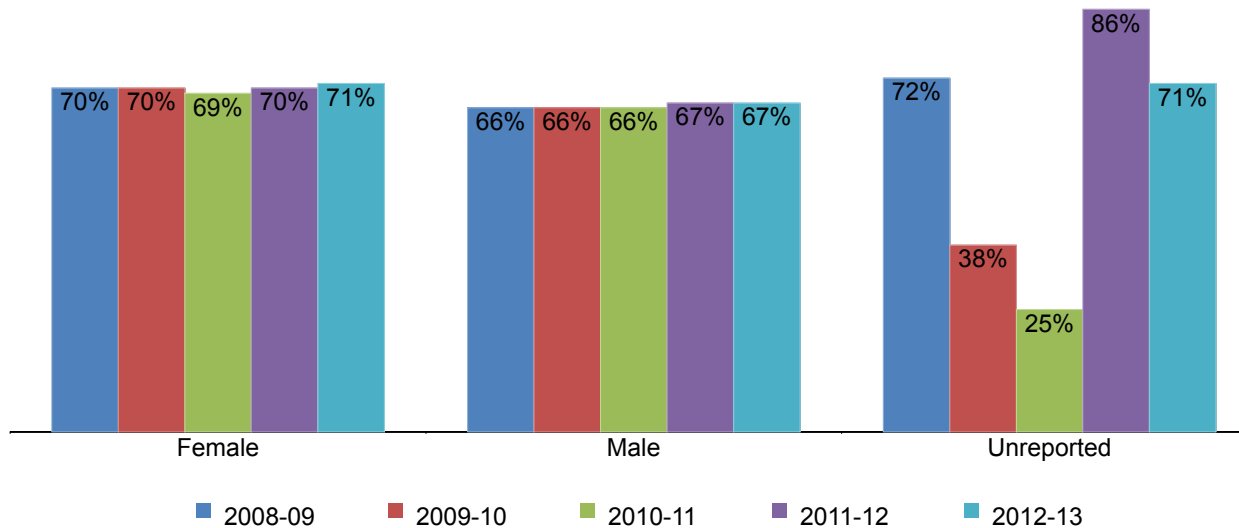


Table 3.2. Mesa College Success Rates by Gender

	2008-09	2009-10	2010-11	2011-12	2012-13	% Difference 08/09 - 12/13	College Average 08/09 - 12/13	All Colleges Average 08/09 - 12/13
Female	70%	70%	69%	70%	71%	1%	70%	68%
Male	66%	66%	66%	67%	67%	1%	66%	67%
Unreported	72%	38%	25%	86%	71%	-1%	64%	74%
Average	68%	68%	67%	68%	69%	1%	68%	68%

Source: SDCCD Information System

Note. Unreported cells may have fewer than 25 students in a given year.

Mesa College Fact Book 2013

Success Rates by Ethnicity: On average, the ethnic groups with the highest success rates between 2008/09 and 2012/13 were Asian/Pacific Islander students (73%), White students (72%), and Filipino students (69%). The average success rates of African American (57%), American Indian (65%), and Latino students (63%) were lower than the average success rates of the general student populations of both Mesa College and all colleges in the district (68% each). The average success rates of Asian/Pacific Islander, White, and Filipino students exceeded the same averages.

Figure 3.3. Mesa College Success Rates by Ethnicity

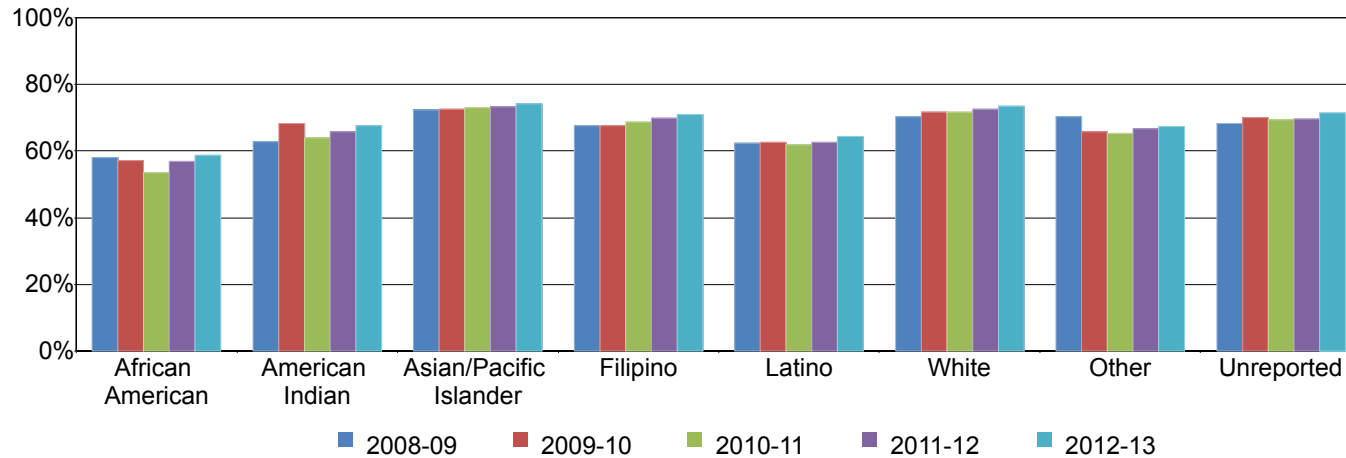


Table 3.3. Mesa College Success Rates by Ethnicity

	2008-09	2009-10	2010-11	2011-12	2012-13	% Difference 08/09 - 12/13	College Average 08/09 - 12/13	All Colleges Average 08/09 - 12/13
African American	58%	57%	54%	57%	59%	1%	57%	56%
American Indian	63%	68%	64%	66%	68%	5%	65%	66%
Asian/Pacific Islander	72%	73%	73%	73%	74%	2%	73%	73%
Filipino	68%	68%	69%	70%	71%	3%	69%	70%
Latino	62%	63%	62%	63%	64%	2%	63%	63%
White	70%	72%	72%	73%	73%	3%	72%	73%
Other	70%	66%	65%	67%	67%	-3%	67%	67%
Unreported	68%	70%	69%	70%	71%	3%	70%	70%
Average	68%	68%	67%	68%	69%	1%	68%	68%

Source: SDCCD Information System

Mesa College Fact Book 2013

Success Rates by Age: With the exception of students under age 18, a general trend between 2008/09 and 2012/13 showed as age increased, so did the average success rates. Students under age 18 had the highest success rate on average (84%). With the exception of students ages 18-24, the average success rates of all other age groups were higher than the average success rates of the general student populations at both Mesa College and all colleges in the district (68% each).

Figure 3.4. Mesa College Success Rates by Age

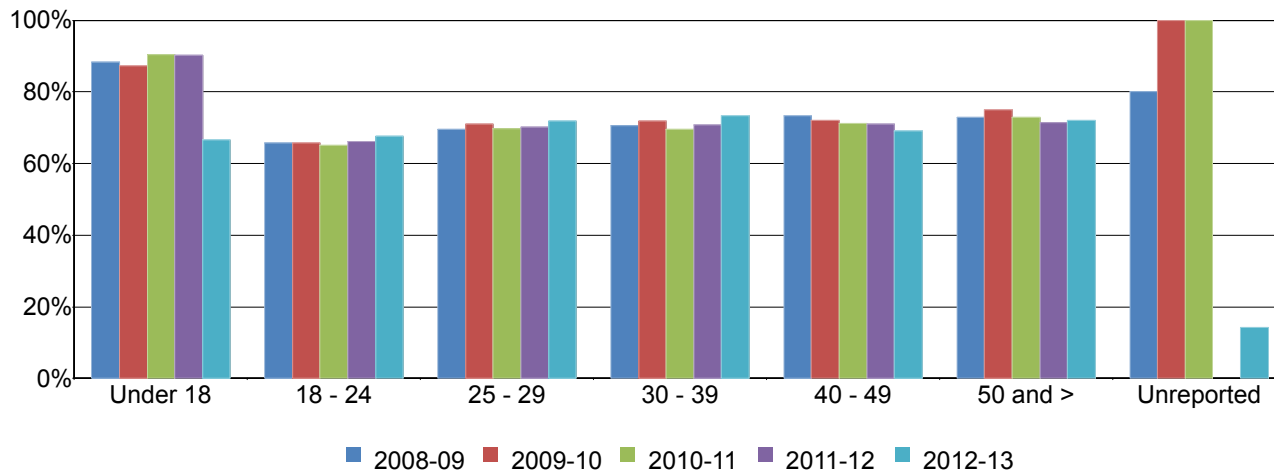


Table 3.4. Mesa College Success Rates by Age

	2008-09	2009-10	2010-11	2011-12	2012-13	% Difference 08/09 - 12/13	College Average 08/09 - 12/13	All Colleges Average 08/09 - 12/13
Under 18	88%	87%	90%	90%	67%	-21%	84%	84%
18 - 24	66%	66%	65%	66%	68%	2%	66%	65%
25 - 29	70%	71%	70%	70%	72%	2%	70%	70%
30 - 39	71%	72%	70%	71%	73%	2%	71%	72%
40 - 49	73%	72%	71%	71%	69%	-4%	71%	73%
50 and >	73%	75%	73%	71%	72%	-1%	73%	74%
Unreported	80%	100%	100%	---	14%	-66%	---	74%
Average	68%	68%	67%	68%	69%	1%	68%	68%

Source: SDCCD Information System

Note. Unreported cells may have fewer than 25 students in a given year.

Mesa College Fact Book 2013

Overall Retention Rates: Mesa College’s annual retention rates increased 3% from 2008/09 to 2012/13, with an average of 84%. This retention rate average was slightly lower than the retention rate average of all colleges in the district (85%). The Mesa College annual retention rates were generally similar to the annual retention rates of all colleges in the district between 2008/09 and 2012/13.

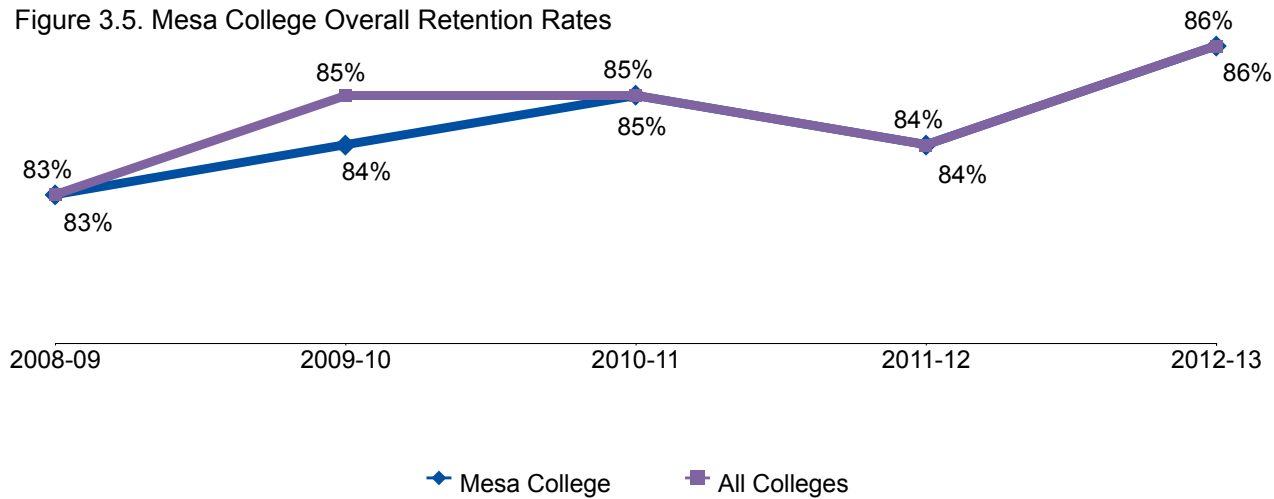


Table 3.5. Mesa College Overall Retention Rates

	2008-09	2009-10	2010-11	2011-12	2012-13	% Difference 08/09 - 12/13	College Average 08/09 - 12/13	All Colleges Average 08/09 - 12/13
Average	83%	84%	85%	84%	86%	3%	84%	85%

Source: SDCCD Information System

Mesa College Fact Book 2013

Retention Rates by Gender: From 2008/09 to 2012/13, average retention rates for both female and male students were comparable to one another (85% & 84%, respectively). The average retention rates of both male and female students at Mesa College were comparable to the average retention rates of the male and female student populations of all colleges in the district (85% each). Furthermore, both male and female students at Mesa College had average retention rates comparable to the average retention rates of the general student populations of both Mesa College and all colleges in the district (84% & 85%, respectively) between 2008/09 and 2012/13.

Figure 3.6. Mesa College Retention Rates by Gender

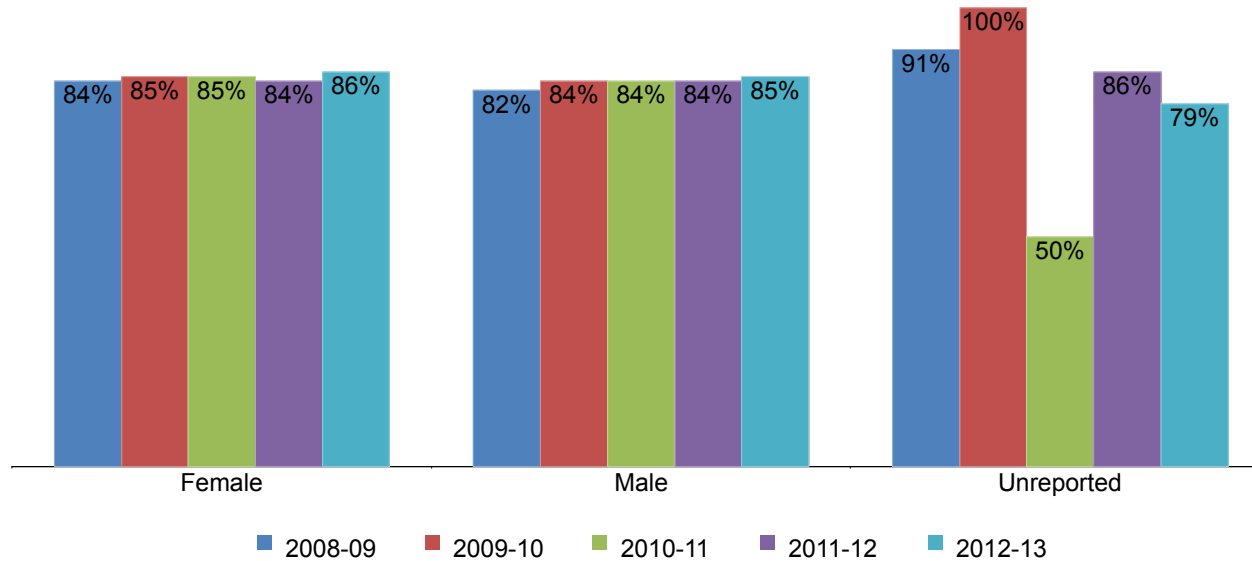


Table 3.6. Mesa College Retention Rates by Gender

	2008-09	2009-10	2010-11	2011-12	2012-13	% Difference 08/09 - 12/13	College Average 08/09 - 12/13	All Colleges Average 08/09 - 12/13
Female	84%	85%	85%	84%	86%	2%	85%	85%
Male	82%	84%	84%	84%	85%	3%	84%	85%
Unreported	91%	100%	50%	86%	79%	-12%	84%	88%
Average	83%	84%	85%	84%	86%	3%	84%	85%

Source: SDCCD Information System

Note. Unreported cells may have fewer than 25 students in a given year.

Mesa College Fact Book 2013

Retention Rates by Ethnicity: The ethnic groups with the highest retention rates, on average, were Asian/Pacific Islander students (87%), Filipino students (85%), White students (85%), and students categorized as 'Other' ethnicities (84%). The average retention rates of African American (81%), American Indian (82%), and Latino students (83%) were lower than the average retention rates of the general student populations at both Mesa College (84%) and all colleges in the district (85%). The average retention rates of Asian/Pacific Islander, Filipino, and White students were comparable to or exceeded the same averages.

Figure 3.7. Mesa College Retention Rates by Ethnicity

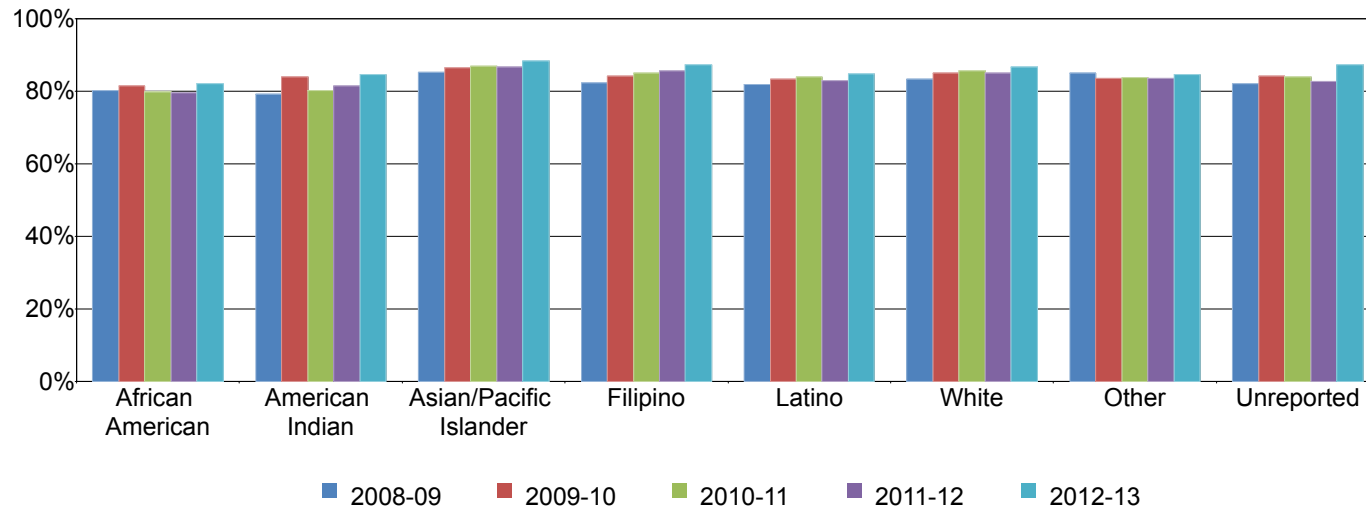


Table 3.7. Mesa College Retention Rates by Ethnicity

	2008-09	2009-10	2010-11	2011-12	2012-13	% Difference 08/09 - 12/13	College Average 08/09 - 12/13	All Colleges Average 08/09 - 12/13
African American	80%	81%	80%	80%	82%	2%	81%	81%
American Indian	79%	84%	80%	82%	84%	5%	82%	83%
Asian/Pacific Islander	85%	86%	87%	87%	88%	3%	87%	87%
Filipino	82%	84%	85%	85%	87%	5%	85%	86%
Latino	82%	83%	84%	83%	85%	3%	83%	84%
White	83%	85%	86%	85%	87%	4%	85%	86%
Other	85%	83%	84%	83%	85%	0%	84%	84%
Unreported	82%	84%	84%	83%	87%	5%	84%	84%
Average	83%	84%	85%	84%	86%	3%	84%	85%

Source: SDCCD Information System

Mesa College Fact Book 2013

Retention Rates by Age: Between 2008/09 and 2012/13, annual retention rates were greatest for students under 18 years of age (96%). With the exception of students under age 18, the average retention rates of all other age groups were comparable to or lower than the average retention rate of the general student populations at both Mesa College (84%) and all colleges in the district (85%).

Figure 3.8. Mesa College Retention Rates by Age

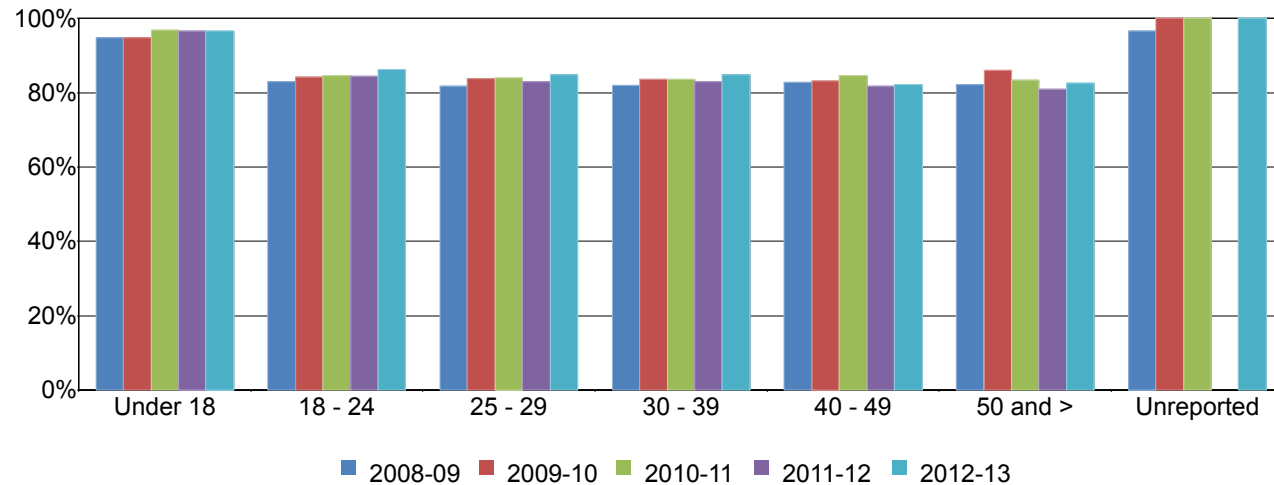


Table 3.8. Mesa College Retention Rates by Age

	2008-09	2009-10	2010-11	2011-12	2012-13	% Difference 08/09 - 12/13	College Average 08/09 - 12/13	All Colleges Average 08/09 - 12/13
Under 18	95%	95%	97%	97%	97%	2%	96%	95%
18 - 24	83%	84%	85%	84%	86%	3%	85%	85%
25 - 29	82%	84%	84%	83%	85%	3%	84%	84%
30 - 39	82%	84%	84%	83%	85%	3%	83%	84%
40 - 49	83%	83%	85%	82%	82%	-1%	83%	85%
50 and >	82%	86%	83%	81%	83%	1%	83%	85%
Unreported	97%	100%	100%	---	100%	3%	---	97%
Average	83%	84%	85%	84%	86%	3%	84%	85%

Source: SDCCD Information System

Mesa College Fact Book 2013

Overall Annual GPA: The annual GPAs for Mesa College remained relatively consistent, with an average of 2.65. Mesa's collegewide average annual GPA was equal to the annual average GPA of all colleges in the district (2.65). The Mesa College annual GPAs were comparable to the annual GPAs of all colleges in the district between 2008/09 and 2012/13.

Figure 3.9. Mesa College Overall Annual GPA

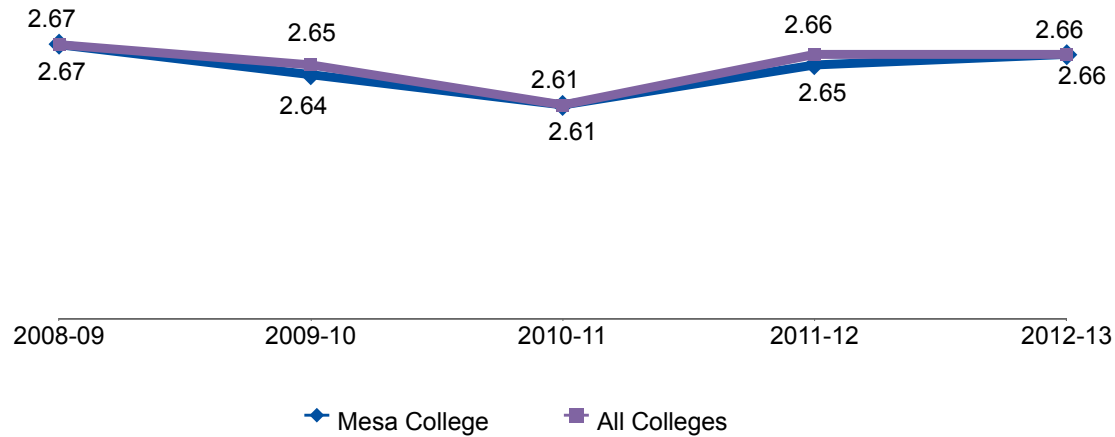


Table 3.9. Mesa College Overall Annual GPA

	2008-09	2009-10	2010-11	2011-12	2012-13	College Average 08/09 - 12/13	All Colleges Average 08/09 - 12/13
Average	2.67	2.64	2.61	2.65	2.66	2.65	2.65

Source: SDCCD Information System

Mesa College Fact Book 2013

Annual GPA by Gender: Between 2008/09 and 2012/13, female students, on average, had higher GPAs compared to their male student counterparts (2.73 & 2.55, respectively). The average annual GPA of female students at Mesa was slightly higher than the average annual GPA of the female students at all colleges in the district (2.69). However, the opposite trend was true for the male students at Mesa when compared to the male student population for all colleges in the district (2.55 & 2.60, respectively). The average annual GPA of female students at Mesa was higher than the average annual GPAs of the student populations at both Mesa and all colleges in the district (2.65 each). However, the opposite trend was true for the male students at Mesa College when compared to the same averages.

Figure 3.10. Mesa College Annual GPA by Gender

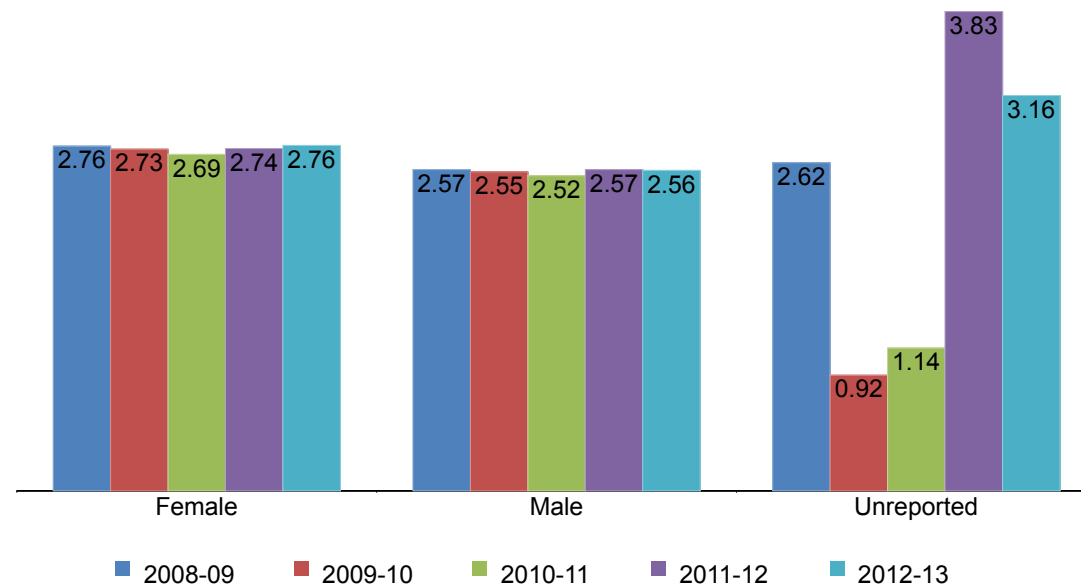


Table 3.10. Mesa College Annual GPA by Gender

	2008-09	2009-10	2010-11	2011-12	2012-13	College Average 08/09 - 12/13	All Colleges Average 08/09 - 12/13
Female	2.76	2.73	2.69	2.74	2.76	2.73	2.69
Male	2.57	2.55	2.52	2.57	2.56	2.55	2.60
Unreported	2.62	0.92	1.14	3.83	3.16	2.45	2.76
Average	2.67	2.64	2.61	2.65	2.66	2.65	2.65

Source: SDCCD Information System

Mesa College Fact Book 2013

Annual GPA by Ethnicity: Both Asian/Pacific Islander and White students had the highest GPAs (2.85 & 2.82, respectively) on average between 2008/09 and 2012/13. The average annual GPAs of African American, American Indian, Filipino, Latino students, and student categorized as 'Other' ethnicities were lower than the average annual GPAs of the general student populations of both Mesa College and all colleges in the district (2.65 each). Asian/Pacific Islander and White students exceeded the same averages.

Figure 3.11. Mesa College Annual GPA by Ethnicity

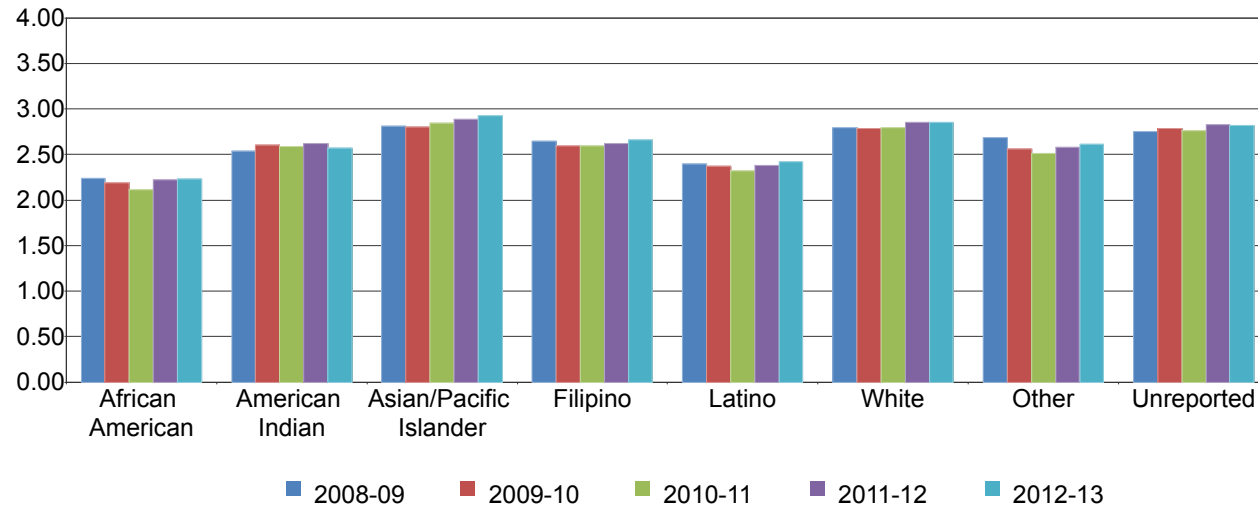


Table 3.11. Mesa College Annual GPA by Ethnicity

	2008-09	2009-10	2010-11	2011-12	2012-13	College Average 08/09 - 12/13	All Colleges Average 08/09 - 12/13
African American	2.24	2.19	2.12	2.22	2.23	2.19	2.22
American Indian	2.54	2.60	2.59	2.62	2.57	2.58	2.62
Asian/Pacific Islander	2.81	2.80	2.84	2.89	2.93	2.85	2.85
Filipino	2.64	2.60	2.59	2.62	2.66	2.62	2.64
Latino	2.40	2.37	2.32	2.38	2.42	2.38	2.40
White	2.79	2.79	2.79	2.85	2.85	2.82	2.88
Other	2.68	2.56	2.51	2.58	2.61	2.58	2.59
Unreported	2.76	2.78	2.76	2.83	2.82	2.78	2.81
Average	2.67	2.64	2.61	2.65	2.66	2.65	2.65

Source: SDCCD Information System

Mesa College Fact Book 2013

Annual GPA by Age: With the exception of students under age 18, a general trend between 2008/09 and 2012/13 showed as age increased, so did the average GPAs. The average annual GPA of students ages 18-24 (2.49) was lower than the general student populations of both Mesa College and all colleges in the district (2.65 each). However, all other age groups exceeded the same averages.

Figure 3.12. Mesa College Annual GPA by Age

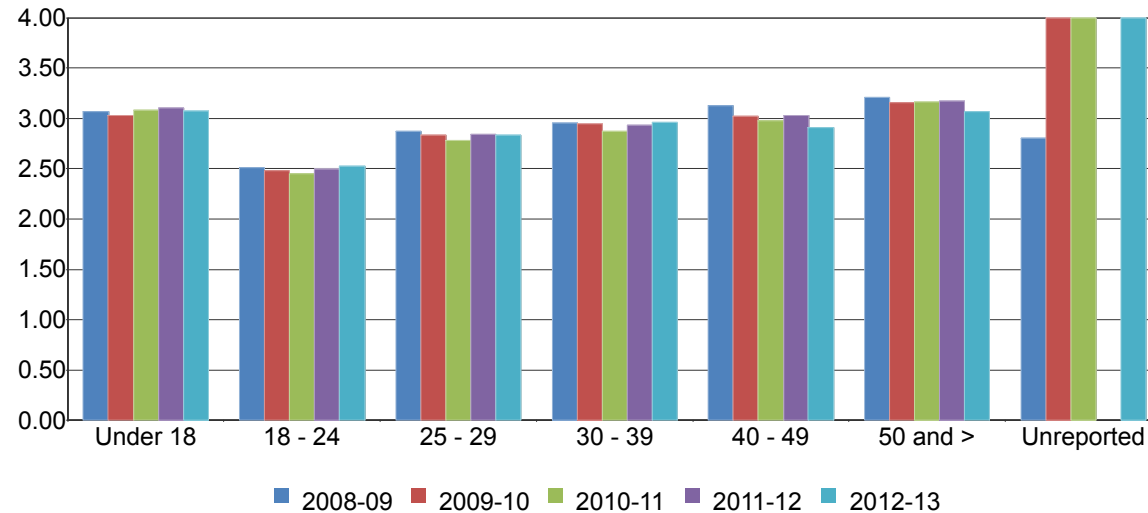


Table 3.12. Mesa College Annual GPA by Age

	2008-09	2009-10	2010-11	2011-12	2012-13	College Average 08/09 - 12/13	All Colleges Average 08/09 - 12/13
Under 18	3.07	3.03	3.08	3.11	3.08	3.07	3.03
18 - 24	2.51	2.48	2.45	2.50	2.53	2.49	2.47
25 - 29	2.87	2.84	2.78	2.84	2.83	2.83	2.84
30 - 39	2.96	2.95	2.87	2.93	2.96	2.93	2.93
40 - 49	3.12	3.02	2.98	3.03	2.91	3.01	2.99
50 and >	3.21	3.16	3.16	3.17	3.07	3.15	3.07
Unreported	2.81	4.00	4.00	---	4.00	---	3.09
Average	2.67	2.64	2.61	2.65	2.66	2.65	2.65

Source: SDCCD Information System

Mesa College Fact Book 2013

Annual Awards Conferred: On average, 74% of the total awards conferred at Mesa College were associate degrees. The number of certificates requiring 29 or fewer units showed the greatest increase over the five-year period (33%), from 94 in 2008/09 to 125 in 2012/13. In contrast, certificates requiring 60 or more units decreased 100%, from 24 in 2008/09 to 0 in 2012/13. On average, associate degrees comprised a greater percentage of awards conferred at Mesa College (74%) than all colleges in the district (65%).

Figure 3.13. Mesa College Overall Annual Awards Conferred

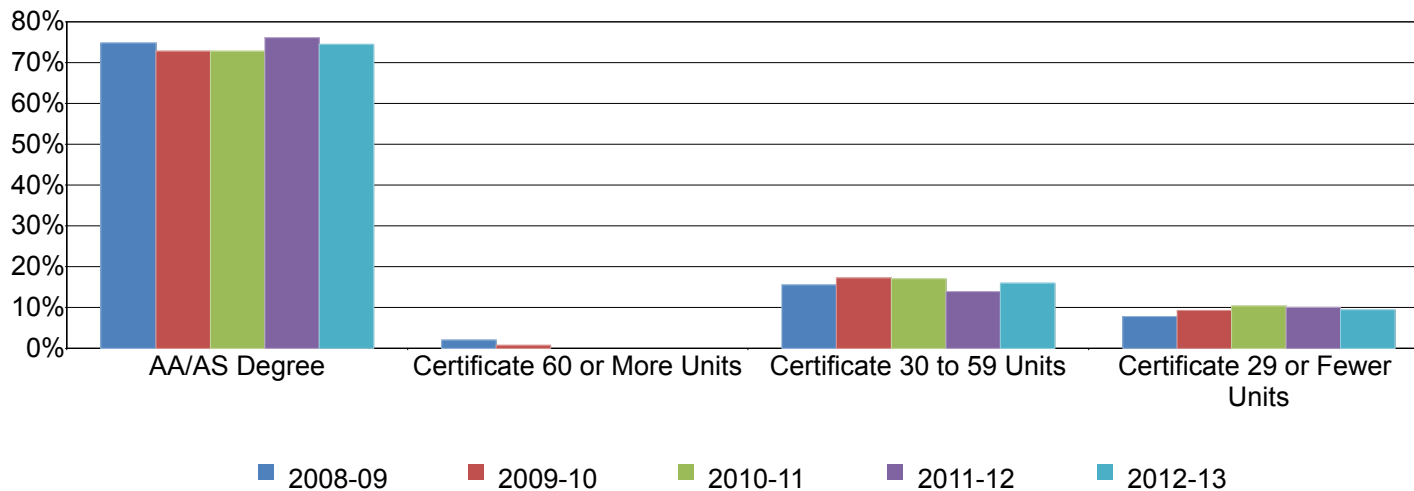


Table 3.13. Mesa College Overall Annual Awards Conferred

	2008-09		2009-10		2010-11		2011-12		2012-13		% Change 08/09-12/13	College Average 08/09-12/13	All Colleges Average 08/09-12/13
AA/AS Degree	917	75%	874	73%	907	73%	1,073	76%	981	75%	7%	74%	65%
Certificate 60 or More Units	24	2%	9	1%	0	0%	0	0%	0	0%	-100%	1%	0%
Certificate 30 to 59 Units	191	16%	206	17%	211	17%	196	14%	210	16%	10%	16%	18%
Certificate 29 or Fewer Units	94	8%	112	9%	128	10%	141	10%	125	9%	33%	9%	16%
Total	1,226	100%	1,201	100%	1,246	100%	1,410	100%	1,316	100%	7%	100%	100%

Source: SDCCD Information System

Mesa College Fact Book 2013

Annual Awards Conferred by Gender: On average, female students received a greater proportion of associate degrees awarded at Mesa College than their male counterparts (56% & 44%, respectively). Between 2008/09 and 2012/13, the number of associate degrees awarded increased 13% for male students and 3% for female students. The number of certificates requiring 30 to 59 units also increased for male students (67%) but decreased somewhat for female students (14%). From 2008/09 to 2012/13, male students consistently earned a lower percentage of certificates at Mesa College compared to the male student population of all colleges in the district. Female students exhibited the opposite pattern.

Figure 3.14.1. Mesa College Annual AA/AS Degrees by Gender

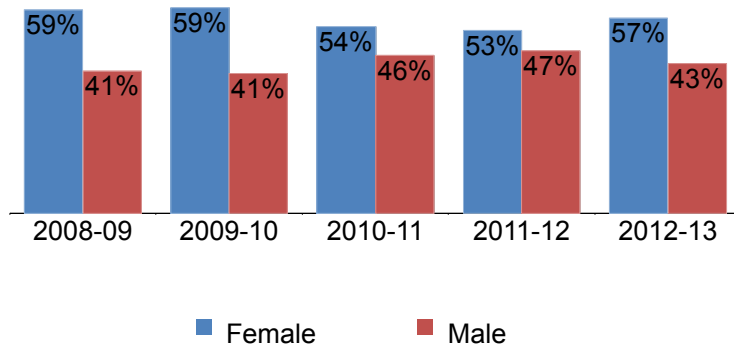


Figure 3.14.2. Mesa College Annual Certificates 60 or More Units by Gender

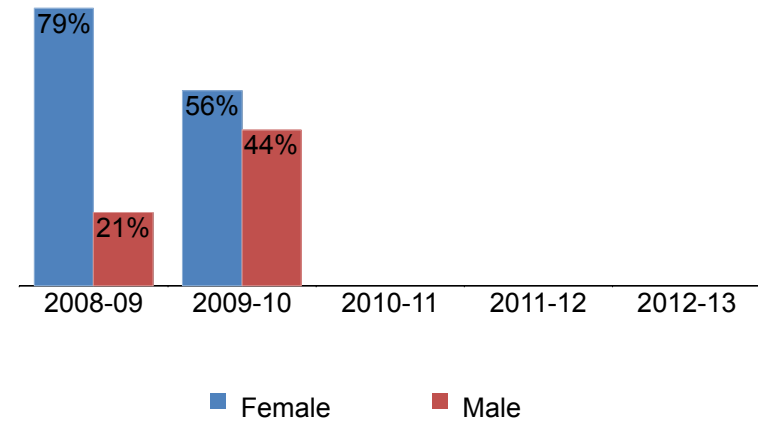


Figure 3.14.3. Mesa College Annual Certificates 30 to 59 Units by Gender

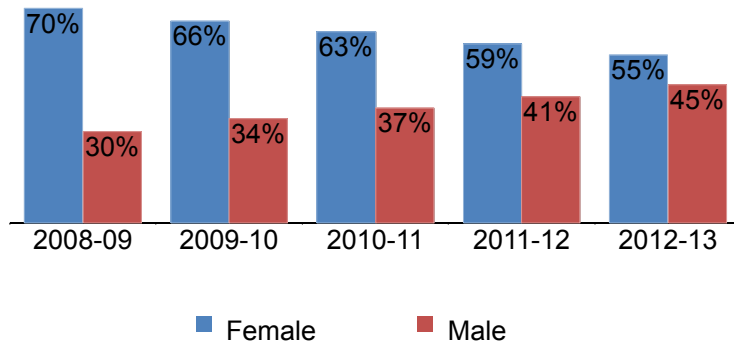
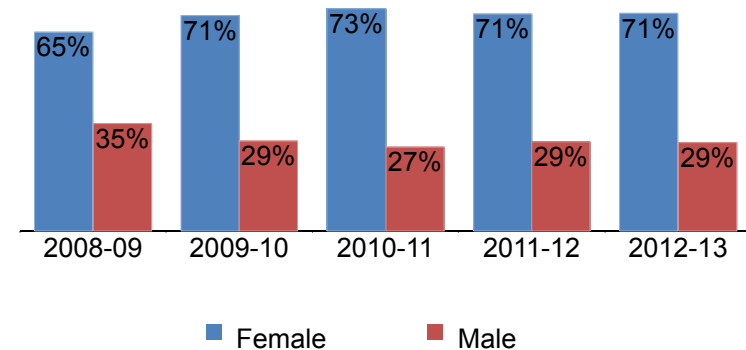


Figure 3.14.4. Mesa College Annual Certificates 29 or Fewer Units by Gender



Mesa College Fact Book 2013

Table 3.14. Mesa College Annual Awards Conferred by Gender

		2008-09		2009-10		2010-11		2011-12		2012-13		% Change 08/09-12/13	College Average 08/09-12/13	All Colleges Average 08/09-12/13
AA/AS Degree	Female	540	59%	520	59%	491	54%	568	53%	555	57%	3%	56%	55%
	Male	377	41%	354	41%	416	46%	505	47%	426	43%	13%	44%	45%
	Total	917	100%	874	100%	907	100%	1,073	100%	981	100%	7%	100%	100%
Certificate 60 or More Units	Female	19	79%	5	56%	0	0%	0	0%	0	0%	-100%	73%	42%
	Male	5	21%	4	44%	0	0%	0	0%	0	0%	-100%	27%	58%
	Total	24	100%	9	100%	0	0%	0	0%	0	0%	-100%	100%	100%
Certificate 30 to 59 Units	Female	134	70%	136	66%	132	63%	115	59%	115	55%	-14%	62%	49%
	Male	57	30%	70	34%	79	37%	81	41%	95	45%	67%	38%	51%
	Total	191	100%	206	100%	211	100%	196	100%	210	100%	10%	100%	100%
Certificate 29 or Fewer Units	Female	61	65%	79	71%	93	73%	100	71%	89	71%	46%	70%	44%
	Male	33	35%	33	29%	35	27%	41	29%	36	29%	9%	30%	56%
	Total	94	100%	112	100%	128	100%	141	100%	125	100%	33%	100%	100%
Grand Total		1,226	100%	1,201	100%	1,246	100%	1,410	100%	1,316	100%	7%	100%	100%

Source: SDCCD Information System

Mesa College Fact Book 2013

Annual Awards Conferred by Ethnicity: The number of associate degrees conferred at Mesa College increased for Latino students, Asian/Pacific Islander students, and students categorized as 'Other' ethnicities between 2008/09 and 2012/13. During the same time period, White students received the greatest percentage of awards conferred, followed by Latino students, and Asian/Pacific Islander students. These trends reflect the fact that these three ethnic groups (White, Latino, & Asian/Pacific Islander students) constitute the greatest proportions of the student population at Mesa College. Latino students at Mesa College were slightly underrepresented across most award categories when compared to the ethnic population of all colleges in the district, while White and Asian/Pacific Islander students were slightly overrepresented when compared to the same ethnic groups at all colleges in the district.

Figure 3.15.1. Mesa College Annual AA/AS Degrees by Ethnicity

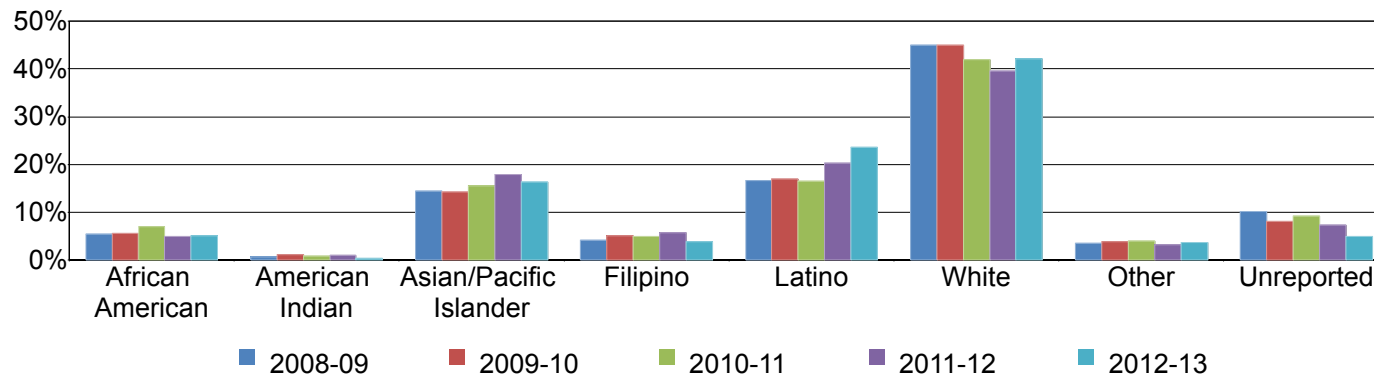
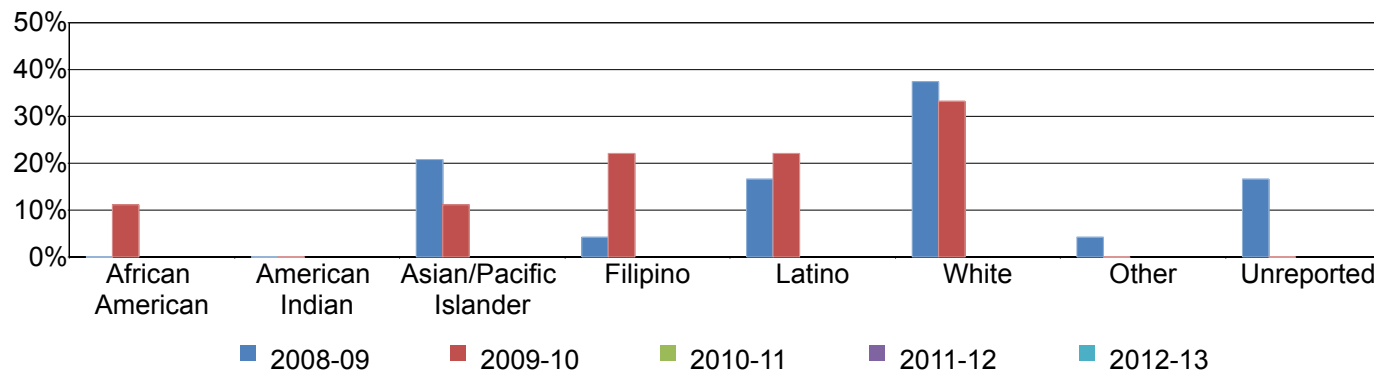


Figure 3.15.2. Mesa College Annual Certificates 60 or More Units by Ethnicity



Mesa College Fact Book 2013

Figure 3.15.3. Mesa College Annual Certificates 30 to 59 Units by Ethnicity

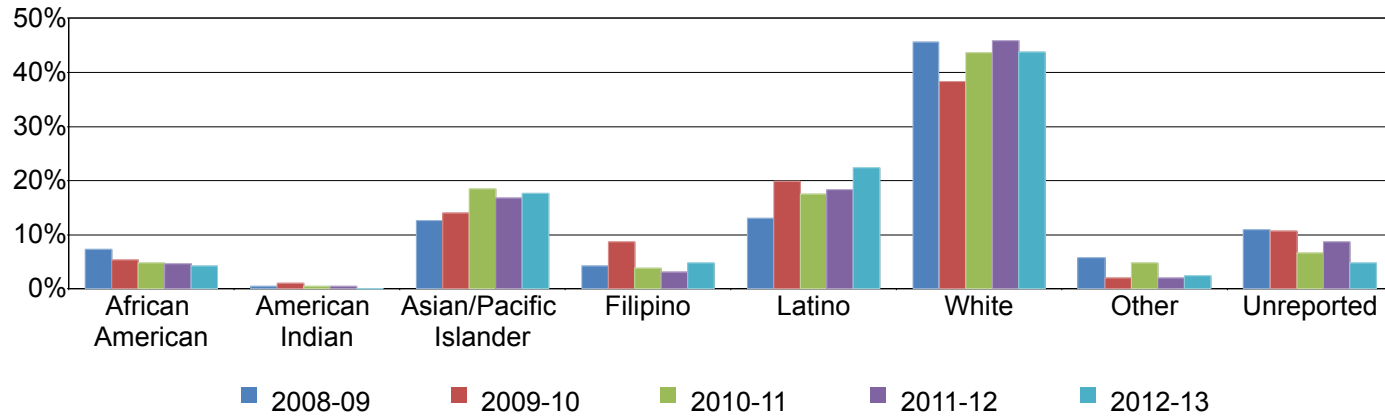
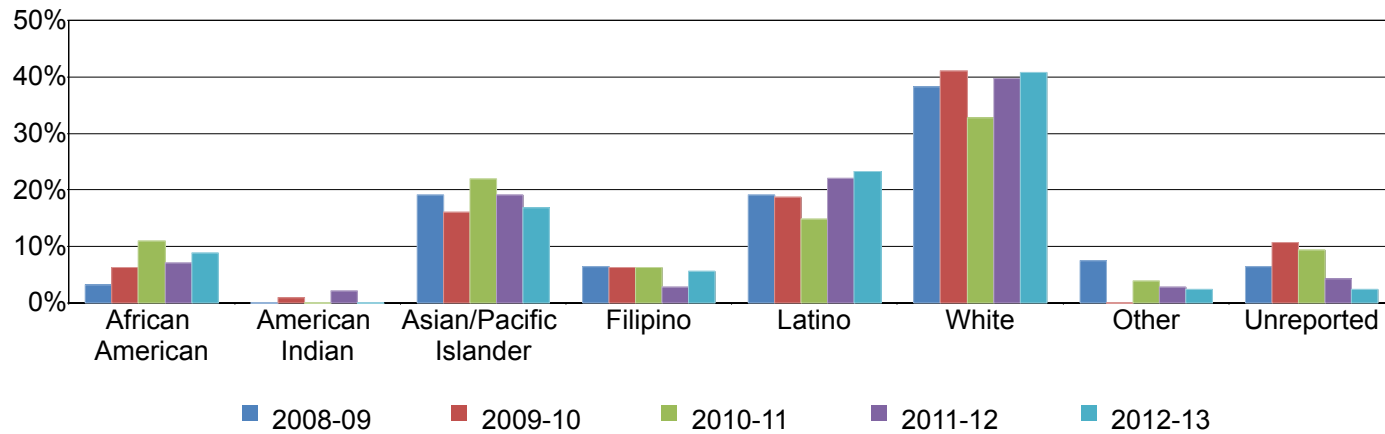


Figure 3.15.4. Mesa College Annual Certificates 29 or Fewer Units by Ethnicity



Mesa College Fact Book 2013

Table 3.15. Mesa College Annual Awards Conferred by Ethnicity

		2008-09		2009-10		2010-11		2011-12		2012-13		% Change 08/09-12/13	College Average 08/09-12/13	All Colleges Average 08/09-12/13
AA/AS Degree	African American	50	5%	49	6%	63	7%	54	5%	50	5%	0%	6%	7%
	American Indian	6	1%	10	1%	7	1%	10	1%	4	0%	-33%	1%	1%
	Asian/Pacific Islander	133	15%	125	14%	141	16%	192	18%	161	16%	21%	16%	13%
	Filipino	38	4%	45	5%	45	5%	62	6%	37	4%	-3%	5%	6%
	Latino	153	17%	148	17%	150	17%	217	20%	231	24%	51%	19%	22%
	White	412	45%	393	45%	381	42%	425	40%	413	42%	0%	43%	38%
	Other	32	3%	33	4%	37	4%	35	3%	36	4%	13%	4%	4%
	Unreported	93	10%	71	8%	83	9%	78	7%	49	5%	-47%	8%	7%
	Total	917	100%	874	100%	907	100%	1,073	100%	981	100%	7%	100%	100%
Certificate 60 or More Units	African American	0	0%	1	11%	0	0%	0	0%	0	0%	---	3%	3%
	Asian/Pacific Islander	5	21%	1	11%	0	0%	0	0%	0	0%	-100%	18%	15%
	Filipino	1	4%	2	22%	0	0%	0	0%	0	0%	-100%	9%	8%
	Latino	4	17%	2	22%	0	0%	0	0%	0	0%	-100%	18%	15%
	White	9	38%	3	33%	0	0%	0	0%	0	0%	-100%	36%	42%
	Other	1	4%	0	0%	0	0%	0	0%	0	0%	-100%	3%	3%
	Unreported	4	17%	0	0%	0	0%	0	0%	0	0%	-100%	12%	12%
	Total	24	100%	9	100%	0	0%	0	0%	0	0%	-100%	100%	100%

Source: SDCCD Information System

Mesa College Fact Book 2013

Table 3.15. Mesa College Annual Awards Conferred by Ethnicity (continued)

		2008-09		2009-10		2010-11		2011-12		2012-13		% Change 08/09-12/13	College Average 08/09-12/13	All Colleges Average 08/09-12/13
Certificate 30 to 59 Units	African American	14	7%	11	5%	10	5%	9	5%	9	4%	-36%	5%	8%
	American Indian	1	1%	2	1%	1	0%	1	1%	0	0%	-100%	0%	1%
	Asian/Pacific Islander	24	13%	29	14%	39	18%	33	17%	37	18%	54%	16%	12%
	Filipino	8	4%	18	9%	8	4%	6	3%	10	5%	25%	5%	5%
	Latino	25	13%	41	20%	37	18%	36	18%	47	22%	88%	18%	21%
	White	87	46%	79	38%	92	44%	90	46%	92	44%	6%	43%	42%
	Other	11	6%	4	2%	10	5%	4	2%	5	2%	-55%	3%	4%
	Unreported	21	11%	22	11%	14	7%	17	9%	10	5%	-52%	8%	8%
Total	191	100%	206	100%	211	100%	196	100%	210	100%	10%	100%	100%	
Certificate 29 or Fewer Units	African American	3	3%	7	6%	14	11%	10	7%	11	9%	267%	8%	8%
	American Indian	0	0%	1	1%	0	0%	3	2%	0	0%	---	1%	1%
	Asian/Pacific Islander	18	19%	18	16%	28	22%	27	19%	21	17%	17%	19%	13%
	Filipino	6	6%	7	6%	8	6%	4	3%	7	6%	17%	5%	4%
	Latino	18	19%	21	19%	19	15%	31	22%	29	23%	61%	20%	26%
	White	36	38%	46	41%	42	33%	56	40%	51	41%	42%	39%	39%
	Other	7	7%	0	0%	5	4%	4	3%	3	2%	-57%	3%	4%
	Unreported	6	6%	12	11%	12	9%	6	4%	3	2%	-50%	7%	5%
Total	94	100%	112	100%	128	100%	141	100%	125	100%	33%	100%	100%	
Grand Total	1,226	100%	1,201	100%	1,246	100%	1,410	100%	1,316	100%	7%	100%	100%	

Source: SDCCD Information System

Mesa College Fact Book 2013

Annual Awards Conferred by Age: On average, 70% of all associate degrees awarded and approximately half of all certificates awarded between 2008/09 and 2012/13 were to students between ages 18 and 29. Within each award category, students between ages 25 and 29 received about one-quarter or more of the awards within each award category. Students between ages 18 and 24 were slightly overrepresented in the number of associate degrees received at Mesa College (41%) when compared to the same age groups of all colleges in the district (39%).

Figure 3.16.1. Mesa College Annual AA/AS Degrees by Age

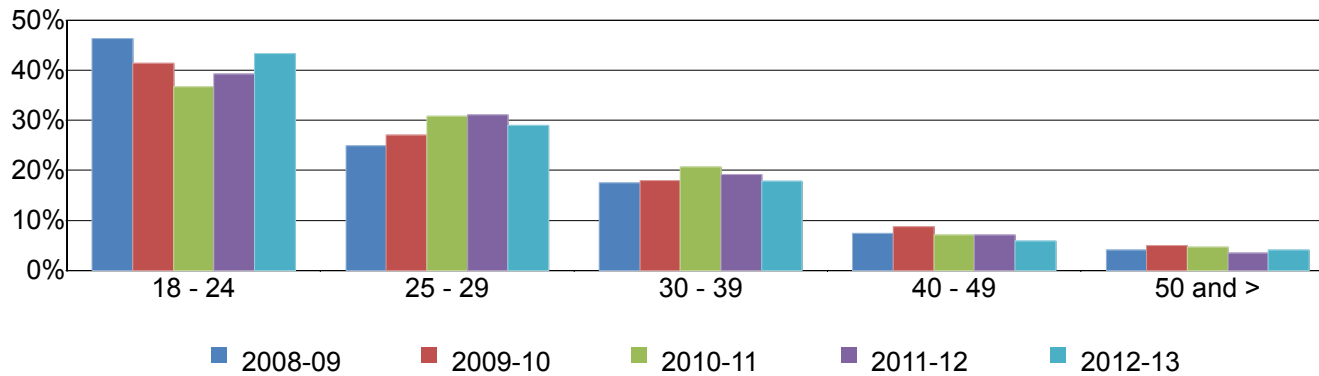
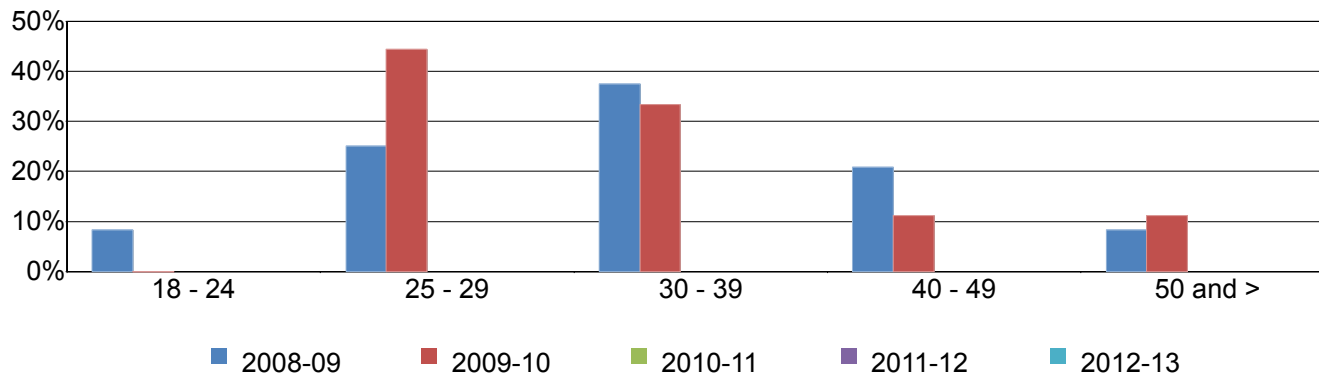


Figure 3.16.2. Mesa College Annual Certificates 60 or More Units by Age



Mesa College Fact Book 2013

Figure 3.16.3. Mesa College Annual Certificates 30 to 59 Units by Age

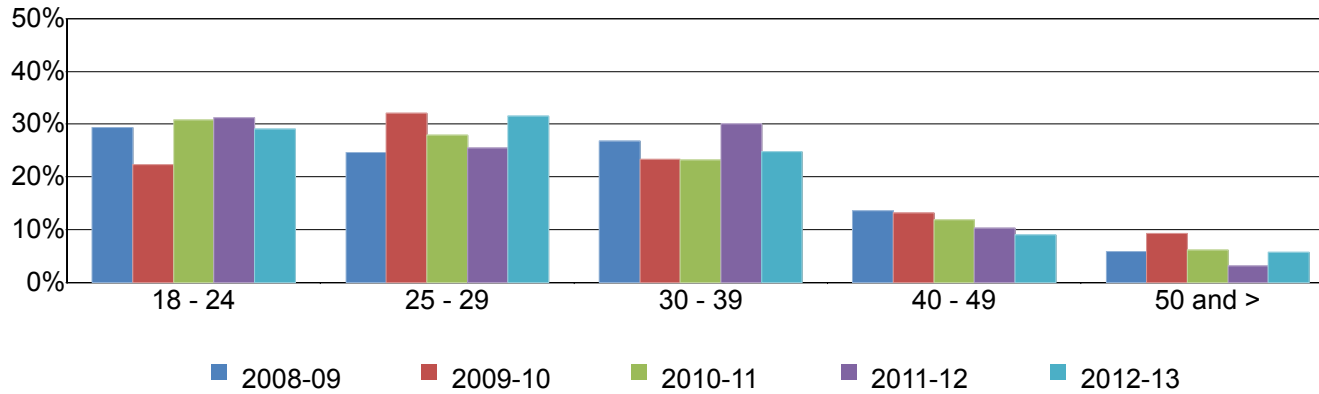
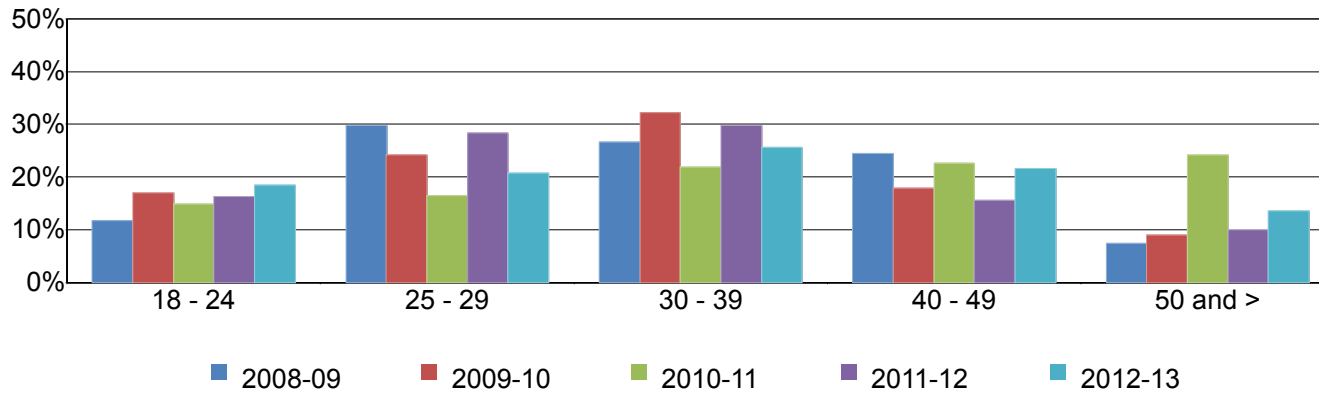


Figure 3.16.4. Mesa College Annual Certificates 29 or Fewer Units by Age



Mesa College Fact Book 2013

Table 3.16. Mesa College Annual Awards Conferred by Age

		2008-09		2009-10		2010-11		2011-12		2012-13		% Change 08/09-12/13	College Average 08/09-12/13	All Colleges Average 08/09-12/13
AA/AS Degree	18 - 24	425	46%	362	41%	333	37%	421	39%	426	43%	0%	41%	39%
	25 - 29	228	25%	236	27%	280	31%	333	31%	284	29%	25%	29%	27%
	30 - 39	160	17%	157	18%	188	21%	206	19%	174	18%	9%	19%	21%
	40 - 49	67	7%	76	9%	64	7%	76	7%	58	6%	-13%	7%	9%
	50 and >	37	4%	43	5%	42	5%	37	3%	39	4%	5%	4%	5%
	Total	917	100%	874	100%	907	100%	1,073	100%	981	100%	7%	100%	100%
Certificate 60 or More Units	18 - 24	2	8%	0	0%	0	0%	0	0%	0	0%	-100%	6%	7%
	25 - 29	6	25%	4	44%	0	0%	0	0%	0	0%	-100%	30%	34%
	30 - 39	9	38%	3	33%	0	0%	0	0%	0	0%	-100%	36%	31%
	40 - 49	5	21%	1	11%	0	0%	0	0%	0	0%	-100%	18%	14%
	50 and >	2	8%	1	11%	0	0%	0	0%	0	0%	-100%	9%	15%
	Total	24	100%	9	100%	0	0%	0	0%	0	0%	-100%	100%	100%
Certificate 30 to 59 Units	18 - 24	56	29%	46	22%	65	31%	61	31%	61	29%	9%	29%	27%
	25 - 29	47	25%	66	32%	59	28%	50	26%	66	31%	40%	28%	24%
	30 - 39	51	27%	48	23%	49	23%	59	30%	52	25%	2%	26%	25%
	40 - 49	26	14%	27	13%	25	12%	20	10%	19	9%	-27%	12%	14%
	50 and >	11	6%	19	9%	13	6%	6	3%	12	6%	9%	6%	11%
	Total	191	100%	206	100%	211	100%	196	100%	210	100%	10%	100%	100%
Certificate 29 or Fewer Units	18 - 24	11	12%	19	17%	19	15%	23	16%	23	18%	109%	16%	22%
	25 - 29	28	30%	27	24%	21	16%	40	28%	26	21%	-7%	24%	24%
	30 - 39	25	27%	36	32%	28	22%	42	30%	32	26%	28%	27%	28%
	40 - 49	23	24%	20	18%	29	23%	22	16%	27	22%	17%	20%	16%
	50 and >	7	7%	10	9%	31	24%	14	10%	17	14%	143%	13%	10%
	Total	94	100%	112	100%	128	100%	141	100%	125	100%	33%	100%	100%
Grand Total	1,226	100%	1,201	100%	1,246	100%	1,410	100%	1,316	100%	7%	100%	100%	

Source: SDCCD Information System

Mesa College Fact Book 2013

Annual Transfer Volume: The annual transfer volume for Mesa College decreased by 7%, from 1,614 in 2008/09 to 1,502 in 2012/13.

Figure 3.17. Mesa College Overall Annual Transfers

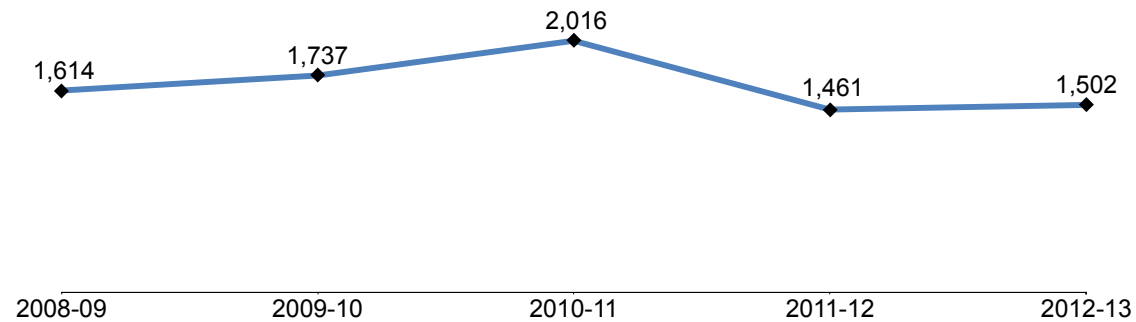


Table 3.17. Mesa College Overall Annual Transfers

	2008-09	2009-10	2010-11	2011-12	2012-13	% Change 08/09-12/13
Total	1,614	1,737	2,016	1,461	1,502	-7%

Source: National Student Clearinghouse

Mesa College Fact Book 2013

Annual Transfer Volume by Gender: Between 2008/09 and 2012/13, female and male students had equal transfer volume (50% each), on average. The transfer volumes for female students decreased between 2008/09 and 2012/13 (17%), however increased slightly for male students (4%).

Figure 3.18. Mesa College Annual Transfers by Gender

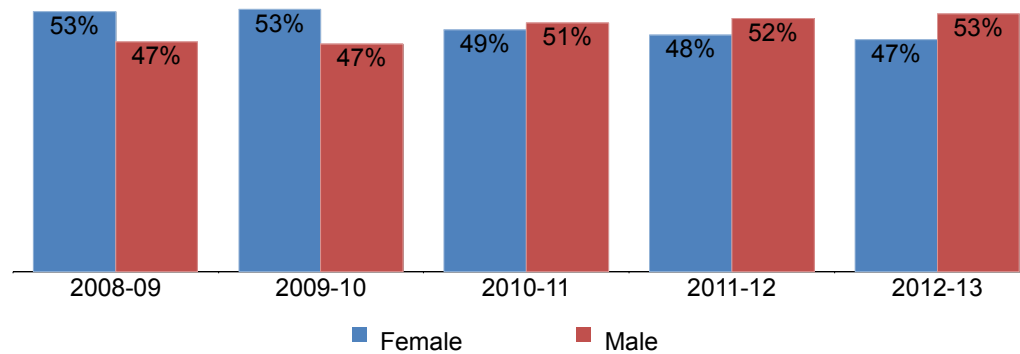


Table 3.18. Mesa College Annual Transfers by Gender

	2008-09		2009-10		2010-11		2011-12		2012-13		% Change 08/09-12/13	College Average 08/09-12/13	All Colleges Average 08/09-12/13
Female	857	53%	929	53%	994	49%	706	48%	711	47%	-17%	50%	51%
Male	757	47%	808	47%	1,022	51%	755	52%	791	53%	4%	50%	49%
Total	1,614	100%	1,737	100%	2,016	100%	1,461	100%	1,502	100%	-7%	100%	100%

Source: National Student Clearinghouse

Mesa College Fact Book 2013

Annual Transfer Volume by Ethnicity: Of the students who transferred from Mesa College, almost half were White students (49%) on average. Together, Latino students and Asian/Pacific Islander students accounted for more than one-quarter of the transfer volume (17% & 13%, respectively) between 2008/09 and 2012/13. Transfer volume decreased for all groups except for African American students, Latino students, and students categorized as 'Other' ethnicities between 2008/09 and 2012/13.

Figure 3.19. Mesa College Annual Transfers by Ethnicity

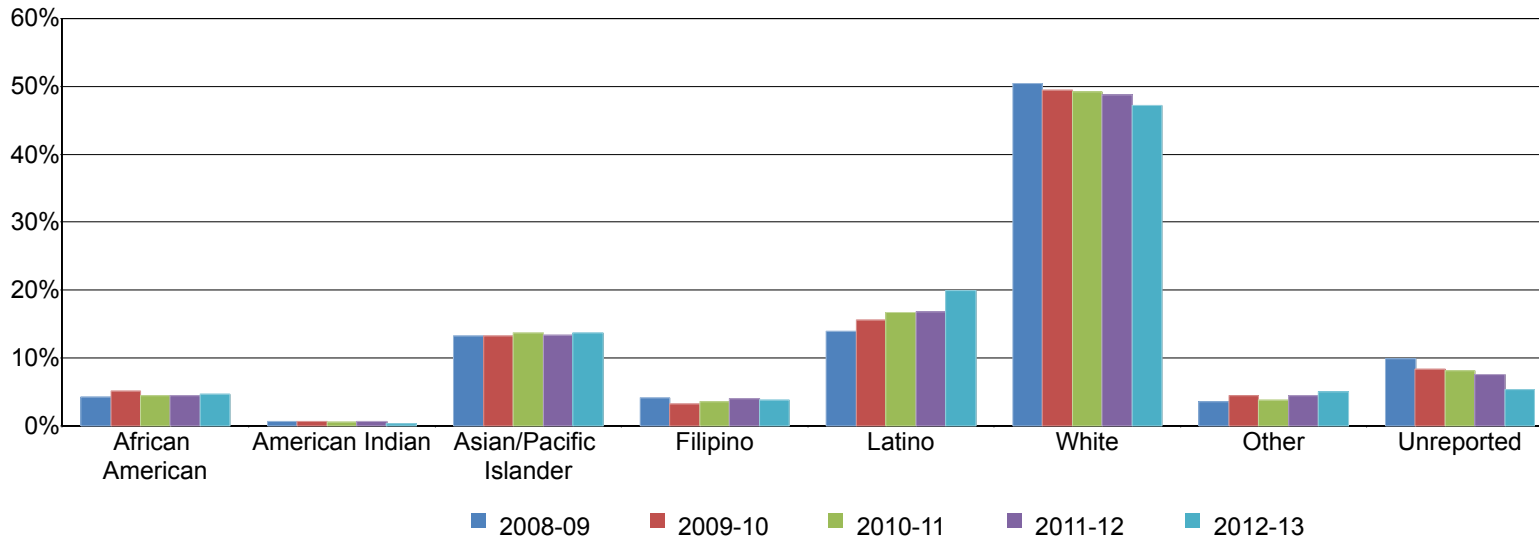


Table 3.19. Mesa College Annual Transfers by Ethnicity

	2008-09		2009-10		2010-11		2011-12		2012-13		% Change 08/09-12/13	College Average 08/09-12/13	All Colleges Average 08/09-12/13
African American	68	4%	88	5%	89	4%	65	4%	70	5%	3%	5%	6%
American Indian	11	1%	11	1%	12	1%	9	1%	5	0%	-55%	1%	1%
Asian/Pacific Islander	214	13%	231	13%	275	14%	195	13%	206	14%	-4%	13%	13%
Filipino	66	4%	56	3%	71	4%	59	4%	57	4%	-14%	4%	5%
Latino	225	14%	271	16%	336	17%	245	17%	299	20%	33%	17%	19%
White	813	50%	859	49%	992	49%	713	49%	708	47%	-13%	49%	45%
Other	57	4%	77	4%	77	4%	65	4%	76	5%	33%	4%	5%
Unreported	160	10%	144	8%	164	8%	110	8%	81	5%	-49%	8%	7%
Total	1,614	100%	1,737	100%	2,016	100%	1,461	100%	1,502	100%	-7%	100%	100%

Source: National Student Clearinghouse

Mesa College Fact Book 2013

Annual Transfer Volume by Age: The age groups with the highest transfer volume between 2008/09 and 2012/13, on average, were students ages 18 to 24 (64%), students between ages 25 and 29 years old (22%), and students ages 30 to 39 years old (10%). Transfer volume decreased by 14% for students age 18 to 24 between 2008/09 and 2012/13. However, transfer volume increased 17% for students ages 30-39 during the same time period.

Figure 3.20. Mesa College Annual Transfers by Age

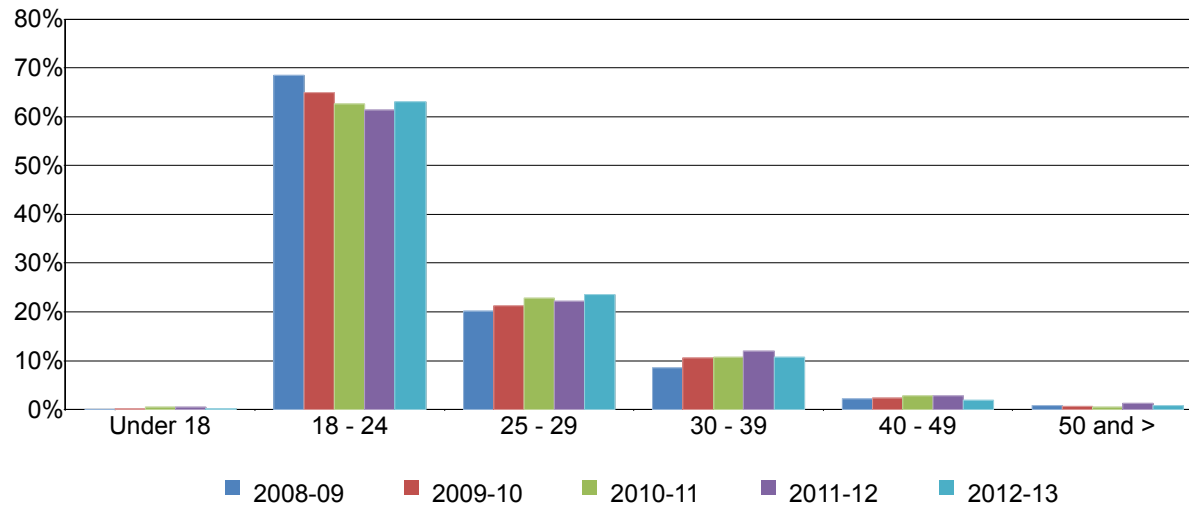


Table 3.20. Mesa College Annual Transfers by Age

	2008-09		2009-10		2010-11		2011-12		2012-13		% Change 08/09-12/13	College Average 08/09-12/13	All Colleges Average 08/09-12/13
Under 18	0	0%	4	0%	8	0%	7	0%	2	0%	---	0%	0%
18 - 24	1,105	68%	1,129	65%	1,263	63%	896	61%	947	63%	-14%	64%	57%
25 - 29	325	20%	369	21%	461	23%	325	22%	355	24%	9%	22%	25%
30 - 39	137	8%	183	11%	217	11%	175	12%	160	11%	17%	10%	13%
40 - 49	34	2%	40	2%	56	3%	41	3%	27	2%	-21%	2%	3%
50 and >	13	1%	12	1%	11	1%	17	1%	11	1%	-15%	1%	1%
Total	1,614	100%	1,737	100%	2,016	100%	1,461	100%	1,502	100%	-7%	100%	100%

Source: National Student Clearinghouse

Mesa College Fact Book 2013

Annual Transfer Volume by CSU-UC/Private (In-State)/Out-of-State: On average, between 2008/09 and 2012/13, nearly half of the Mesa College transfer volume comprised students who transferred into the California State University system (CSU) (47%), followed by students who transferred to the University of California system (UC) (21%), Out-of-State institutions (19%), and In-State Private institutions (13%). Transfer volume for students who transferred from Mesa College to an Out-of-State institution increased 5%, from 286 in 2008/09 to 299 in 2012/13, while transfer volume decreased for students who transferred from Mesa College into the CSU system, UC system, and In-State Private institutions.

Figure 3.21. Mesa College Annual Transfers by CSU-UC/Private (In-State)/Out-of-State

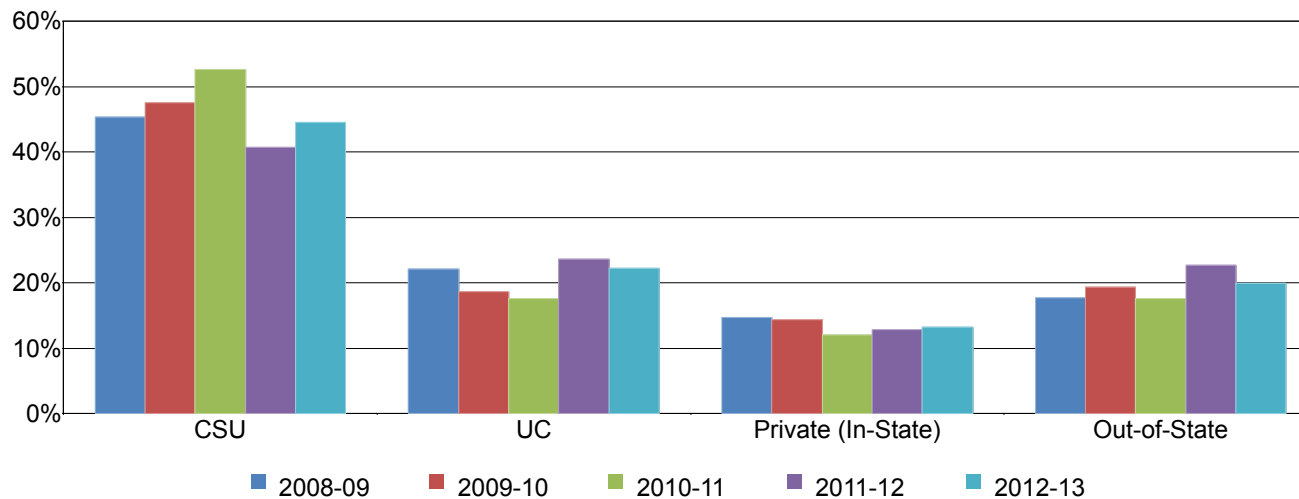


Table 3.21. Mesa College Annual Transfers by CSU-UC/Private (In-State)/Out-of-State

	2008-09		2009-10		2010-11		2011-12		2012-13		% Change 08/09-12/13	College Average 08/09-12/13	All Colleges Average 08/09-12/13
CSU	733	45%	827	48%	1,062	53%	595	41%	670	45%	-9%	47%	46%
UC	357	22%	324	19%	356	18%	346	24%	334	22%	-6%	21%	19%
Private (In-State)	238	15%	249	14%	243	12%	189	13%	199	13%	-16%	13%	13%
Out-of-State	286	18%	337	19%	355	18%	331	23%	299	20%	5%	19%	21%
Total	1,614	100%	1,737	100%	2,016	100%	1,461	100%	1,502	100%	-7%	100%	100%

Source: National Student Clearinghouse

Note. Out-of-State included both public and private 4-year institutions.

Mesa College Fact Book 2013

Annual Transfer Volume by CSU/UC: Of the total Mesa College transfer volume (see table 3.17), 68% of students transferred into either the California State University (CSU) or University of California (UC) systems on average (47% & 21%, respectively). Of the students who transferred to CSU or UC systems, the majority went to the CSU (69%), and the remainder went to the UC (31%) on average. The number of students who transferred from Mesa College to the CSU system decreased by 9%, from 733 in 2008/09 to 670 in 2012/13. During the same time period transfer volume for the UC system decreased by 6%, from 357 in 2008/09 to 334 in 2012/13.

Figure 3.22. Mesa College Annual Transfers by CSU/UC

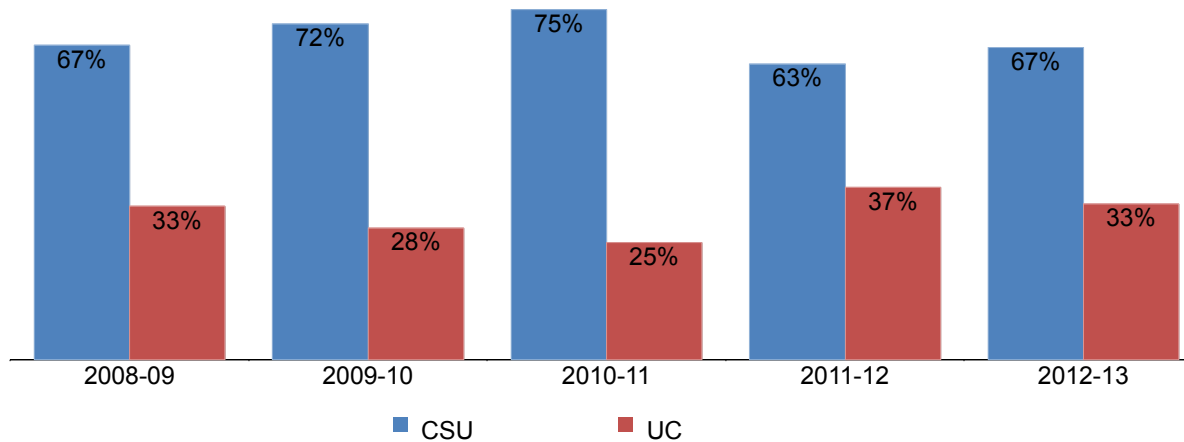


Table 3.22. Mesa College Annual Transfers by CSU/UC

	2008-09		2009-10		2010-11		2011-12		2012-13		% Change 08/09-12/13	College Average 08/09-12/13	All Colleges Average 08/09-12/13
CSU	733	67%	827	72%	1,062	75%	595	63%	670	67%	-9%	69%	71%
UC	357	33%	324	28%	356	25%	346	37%	334	33%	-6%	31%	29%
Total	1,090	100%	1,151	100%	1,418	100%	941	100%	1,004	100%	-8%	100%	100%

Source: National Student Clearinghouse

Mesa College Fact Book 2013

Annual Transfer Volume by Institution Type: Of all the students who transferred from Mesa College, on average, 23% transferred to a private institution and 77% transferred to a public institution. The number of students who transferred from Mesa College to public institutions decreased by 6% from 2008/09 to 2012/13, while the number of Mesa College students who transferred to private institutions decreased by 9%.

Figure 3.23. Mesa College Annual Transfers by Institution Type

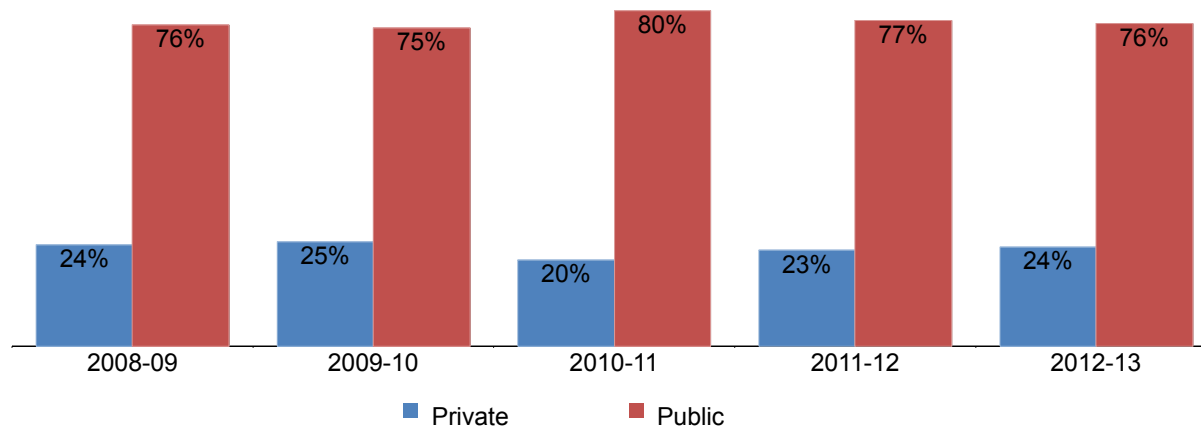


Table 3.23. Mesa College Annual Transfers by Institution Type

	2008-09		2009-10		2010-11		2011-12		2012-13		% Change 08/09-12/13	College Average 08/09-12/13	All Colleges Average 08/09-12/13
Private	386	24%	429	25%	412	20%	333	23%	353	24%	-9%	23%	25%
Public	1,228	76%	1,308	75%	1,604	80%	1,128	77%	1,149	76%	-6%	77%	75%
Total	1,614	100%	1,737	100%	2,016	100%	1,461	100%	1,502	100%	-7%	100%	100%

Source: National Student Clearinghouse

Note. Public and Private included both Out-of-State and In-State 4-year institutions.

Section IV
Productivity and Efficiency

Mesa College Fact Book 2013

This section of the Fact Book contains information on productivity and efficiency measures. The following describes in detail each of the measures:

- 1) FTES. The first measure reported in this section is a measure of productivity. FTES is a calculation of full-time equivalent students enrolled as of official census and is based on the total number of student contact hours. F-Factor is included when reported annually. Starting in 2009-10 tutoring hours (course number 044) can only be claimed for Basic Skills classes at the credit colleges.
- 2) Enrollments. The second measure in this section of the report is also a measure of productivity. Enrollments are the number of seats enrolled or duplicated headcount as of a class census day. Drops, never attends, cancelled, and tutoring classes are excluded. The measure counts all of the classes in which a single student is enrolled compared to unduplicated headcount which counts the student only once regardless of the number of classes he/she may be enrolled in.
- 3) Fill Rates. The third measure reported in this section is a measure of efficiency. Fill rates are the enrollment divided by the course enrollment capacity as set in the curriculum outline. Apprenticeship, in-service, cancelled, tutoring classes, and classes with a capacity of 0 or 1 are excluded.
- 4) Load. The fourth measure reported in this section is a measure of efficiency. Load is a calculation of the ratio of Weekly Student Contact Hours (WSCH) to Full-time Equivalent Faculty (WSCH/FTEF). Tutoring, positive attendance, and cancelled sections are excluded for all colleges.

Mesa College Fact Book 2013

Annual Resident FTES: Mesa College showed a 3% decrease in resident FTES, from 14,931 in 2008/09 to 14,544 in 2012/13. Resident credit FTES showed a 2% decrease between 2008/09 and 2012/13. Mesa College did not claim any FTES for tutoring in 2009/10 through 2012/13, thus, resident non-credit FTES was reported as 0 for these years.

Figure 4.1.1 Mesa College Annual Resident FTES

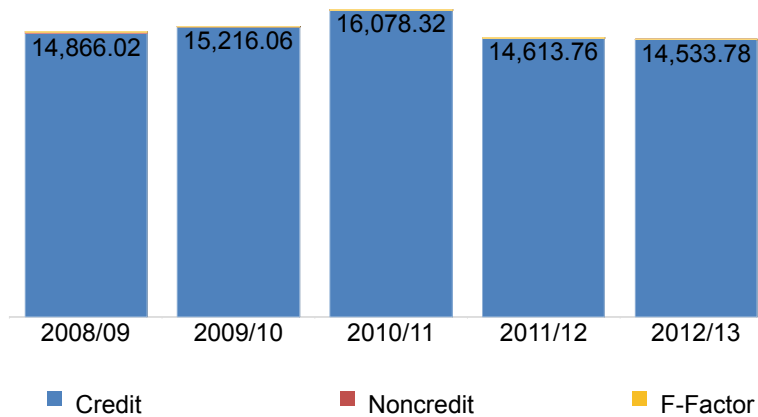


Table 4.1.1 Mesa College Annual Resident FTES

	2008/09	2009/10	2010/11	2011/12	2012/13
Credit	14,866.02	15,216.06	16,078.32	14,613.76	14,533.78
Noncredit	61.90	0.00	0.00	0.00	0.00
F-Factor	3.51	12.53	14.28	11.02	10.62
Total	14,931.43	15,228.59	16,092.60	14,624.78	14,544.40

Source: SDCCD Information System

Mesa College Fact Book 2013

Annual Nonresident FTES: Nonresident FTES decreased 9%, from 671 in 2008/09 to 613 in 2012/13. Nonresident credit FTES displayed a similar trend. Mesa College did not claim any FTES for tutoring in 2009/10 through 2012/13, thus, nonresident non-credit FTES was reported as 0 for these years.

Figure 4.1.2 Mesa College Annual Nonresident FTES

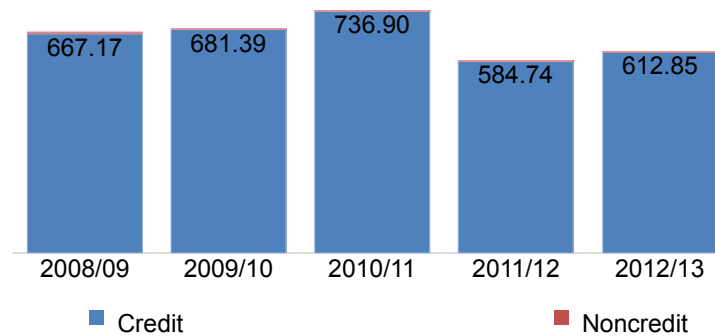


Table 4.1.2 Mesa College Annual Nonresident FTES

	2008/09	2009/10	2010/11	2011/12	2012/13
Credit	667.17	681.39	736.90	584.74	612.85
Noncredit	4.01	0.00	0.00	0.00	0.00
Total	671.18	681.39	736.90	584.74	612.85

Source: SDCCD Information System

Mesa College Fact Book 2013

Annual Overall FTES: Between 2008/09 and 2012/13, total FTES decreased slightly by 3%. For credit FTES, there was 2% decrease, from 15,533 in 2008/09 to 15,146 in 2012/13. Mesa College did not claim any FTES for tutoring in 2009/10 through 2012/13, thus, overall non-credit FTES was reported as 0 for these years.

Figure 4.1.3 Mesa College Resident & Nonresident Annual Overall FTES

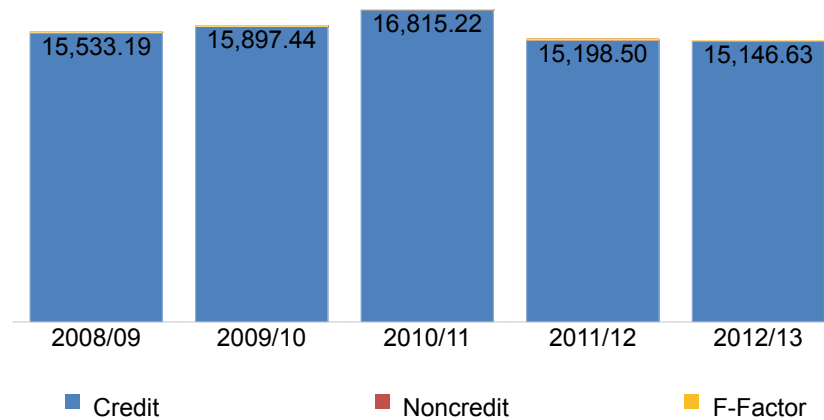


Table 4.1.3 Mesa College Resident & Nonresident Annual Overall FTES

	2008/09	2009/10	2010/11	2011/12	2012/13
Credit	15,533.19	15,897.44	16,815.22	15,198.50	15,146.63
Noncredit	65.91	0.00	0.00	0.00	0.00
F-Factor	3.51	12.53	14.28	11.02	10.62
Total	15,602.61	15,909.97	16,829.50	15,209.52	15,157.25

Source: SDCCD Information System

Mesa College Fact Book 2013

Enrollments: From Summer 2008 to Summer 2012, enrollment steadily decreased, however, in Summer 2011, enrollment decreased dramatically, mirroring the trend for all colleges in the district. From Fall 2008 to Fall 2012, overall enrollment increased 9%. During the same time period, Mesa’s online course enrollment increased 18%. From Spring 2009 to Spring 2013, overall college enrollment increased 9%, and both the on-campus and online course enrollments increased (9% & 10%, respectively). With the exception of the spring term, Mesa College’s overall fall and summer enrollment trends increased at a greater rate than that of all colleges in the district.

Figure 4.2.1 Mesa College Enrollments (Summer)

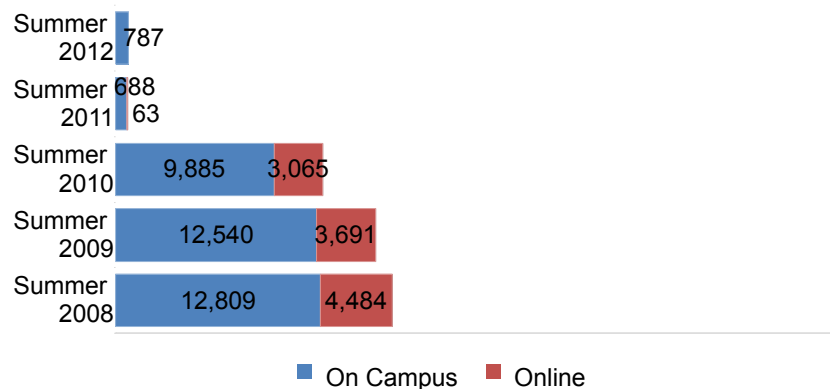


Figure 4.2.2 Mesa College Enrollments (Fall)

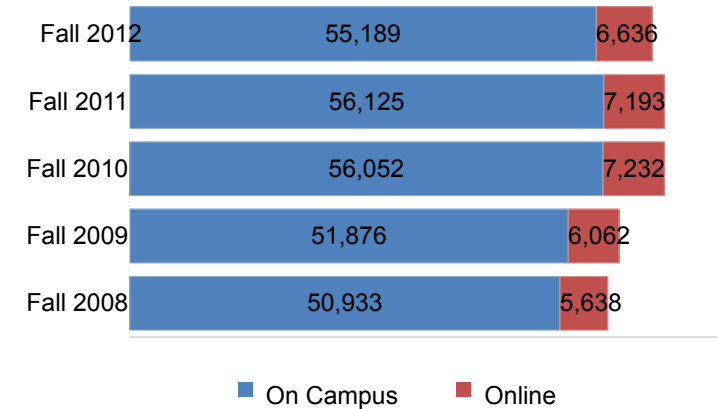
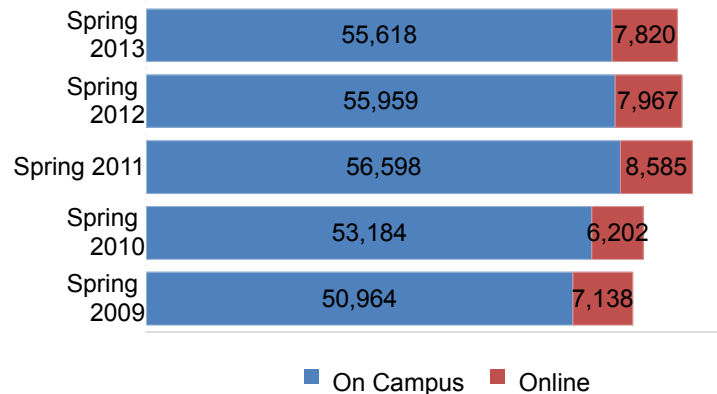


Figure 4.2.3. Mesa College Enrollments (Spring)



Mesa College Fact Book 2013

Fill Rates: On average, Mesa College overall fill rates were higher in fall (93%) and spring (90%) than in summer (85%) terms between 2008/09 and 2012/13. Over the past five years, fill rates increased for summer, fall, and spring terms. In fall terms, on-campus courses had slightly higher fill rates than online courses (93% vs. 88%). A similar trend was observed for spring term on-campus and online course fill rates (91% vs. 86%). On average, Mesa College had slightly higher fill rates for the fall term and had comparable summer and spring fill rates compared to the fill rates of all colleges in the district.

Figure 4.3.1. Mesa College Fill Rates (Summer)

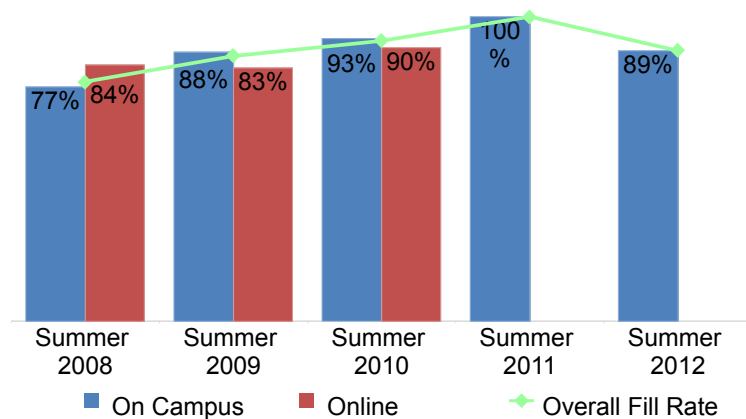


Figure 4.3.2. Mesa College Fill Rates (Fall)

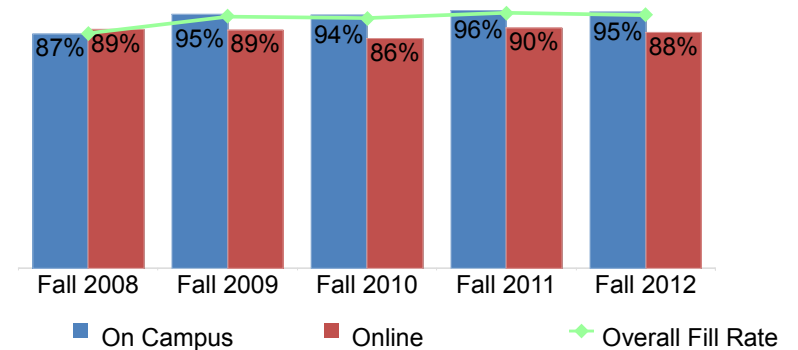
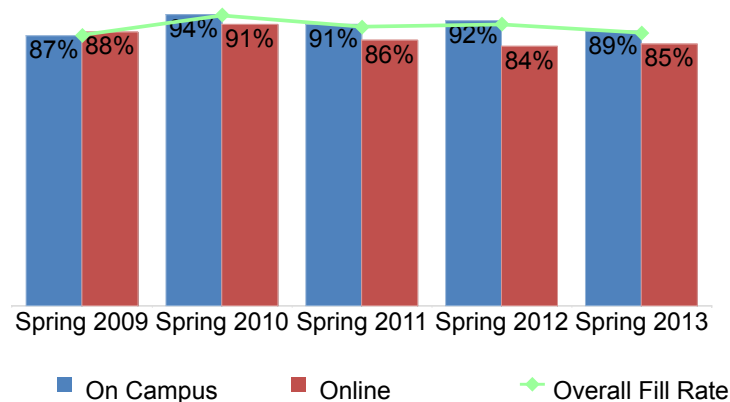


Figure 4.3.3. Mesa College Fill Rates (Spring)



Mesa College Fact Book 2013

Table 4.2. Mesa College Enrollments and Fill Rates

	On Campus			Online			Mesa College Total			All Colleges Total		
	Enrollment	Capacity	Fill Rate	Enrollment	Capacity	Fill Rate	Enrollment	Capacity	Fill Rate	Enrollment	Capacity	Fill Rate
Summer 2008	12,809	16,561	77%	4,484	5,329	84%	17,293	21,890	79%	39,397	52,086	77%
Summer 2009	12,540	14,176	88%	3,691	4,439	83%	16,231	18,615	87%	39,262	45,761	88%
Summer 2010	9,885	10,564	93%	3,065	3,415	90%	12,950	13,979	92%	35,729	39,947	91%
Summer 2011	688	70	100%	63	0	---	751	70	100%	3,806	3,146	87%
Summer 2012	787	54	89%				787	54	89%	3,587	2,860	70%
Total/5-Yr Avg	36,709	41,425	85%	11,303	13,183	85%	48,012	54,608	85%	121,781	143,800	84%

	On Campus			Online			Mesa College Total			All Colleges Total		
	Enrollment	Capacity	Fill Rate	Enrollment	Capacity	Fill Rate	Enrollment	Capacity	Fill Rate	Enrollment	Capacity	Fill Rate
Fall 2008	50,933	56,004	87%	5,638	6,301	89%	56,571	62,305	87%	122,665	143,013	85%
Fall 2009	51,876	53,224	95%	6,062	6,840	89%	57,938	60,064	94%	123,429	133,381	92%
Fall 2010	56,052	57,797	94%	7,232	8,454	86%	63,284	66,251	93%	131,415	141,921	92%
Fall 2011	56,125	56,610	96%	7,193	7,991	90%	63,318	64,601	95%	131,170	138,385	93%
Fall 2012	55,189	56,026	95%	6,636	7,559	88%	61,825	63,585	94%	125,198	130,635	94%
Total/5-Yr Avg	270,175	279,661	93%	32,761	37,145	88%	302,936	316,806	93%	633,877	687,335	91%

	On Campus			Online			Mesa College Total			All Colleges Total		
	Enrollment	Capacity	Fill Rate	Enrollment	Capacity	Fill Rate	Enrollment	Capacity	Fill Rate	Enrollment	Capacity	Fill Rate
Spring 2009	50,964	56,675	87%	7,138	8,067	88%	58,102	64,742	87%	126,372	143,639	87%
Spring 2010	53,184	55,076	94%	6,202	6,820	91%	59,386	61,896	94%	123,528	132,520	93%
Spring 2011	56,598	60,723	91%	8,585	10,006	86%	65,183	70,729	90%	133,644	147,340	90%
Spring 2012	55,959	58,628	92%	7,967	9,459	84%	63,926	68,087	91%	130,396	141,973	90%
Spring 2013	55,618	60,021	89%	7,820	9,242	85%	63,438	69,263	88%	126,796	139,174	89%
Total/5-Yr Avg	272,323	291,123	91%	37,712	43,594	86%	310,035	334,717	90%	640,736	704,646	90%

Source: SDCCD Information System

Note. The Enrollment and Capacity in the above table are not part of the Fill Rate calculation.

Mesa College Fact Book 2013

Load: From Fall 2008 to Fall 2012, Mesa College’s load values increased steadily. Between Spring 2009 and Spring 2013, Mesa’s load values varied. Most of the Mesa College Load values were lower compared to the all colleges in the district Load values across the fall and spring terms. The statewide benchmark for Load is 525 for a 17.5 week semester. SDCCD has set an internal benchmark of 557, which is commensurate to its 16.5 week semester.

Figure 4.4.1. Mesa College Load (Fall)



Figure 4.4.2. Mesa College Load (Spring)

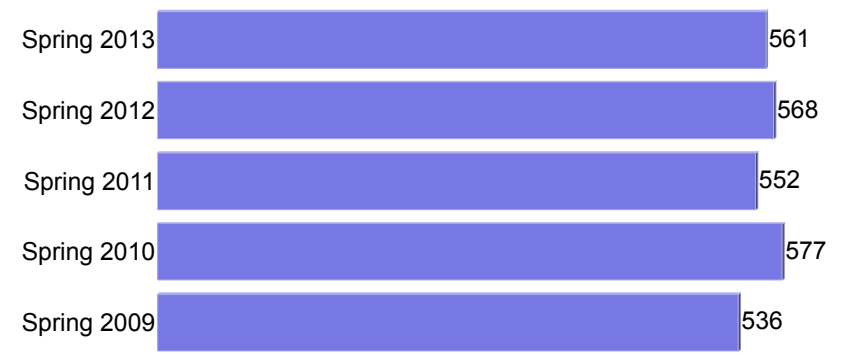


Table 4.4. Mesa College Load

	Mesa College Load	All Colleges Load
Fall 2008	533	533
Fall 2009	568	575
Fall 2010	569	572
Fall 2011	583	578
Fall 2012	585	582
Spring 2009	536	544
Spring 2010	577	582
Spring 2011	552	553
Spring 2012	568	571
Spring 2013	561	561

Source: SDCCD Information System

Section V
Human Resources

Mesa College Fact Book 2013

This section of the Fact Book contains information on the number and classification of employees during the Fall 2012 semester. The information is reported as follows:

- 1) Gender
- 2) Ethnicity
- 3) Employment Type

Mesa College Fact Book 2013

Fall 2012 Employee Breakdown: There were a total of 1,305 employees working at Mesa College in Fall 2012. Adjunct faculty comprised the largest percentage of Mesa employees (55%), followed by contract faculty (17%), non-academic hourly (15%), and classified staff (11%). Supervisory staff and management constituted the smallest proportions of Mesa employees at 2% and 1%, respectively.

The ethnic breakdown showed that White employees constituted 57% of the total employee population, followed by Asian and Latino employees (13% each), and African American employees (7%). Among classified staff, White employees constituted nearly half of the employees (48%) and made up approximately two-thirds of the faculty positions (58% of contract and 64% of adjunct faculty) at Mesa. White employees constituted the majority (54%) of management positions, while Latino and African American employees held a combined 23% of the management positions (15% & 8%, respectively), although the number of management positions was very small (n = 13). Among supervisory staff positions, White employees constituted 39% of this group, while African American, Asian, and Latino employees constituted more than half (51% at 17% each) of this group, while again, the number of supervisory positions was relatively small (n = 23).

Figure 5.1. Mesa College Fall 2012 Employees by Employment Type

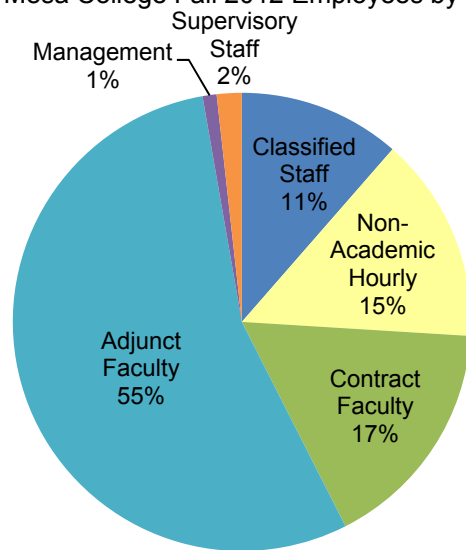
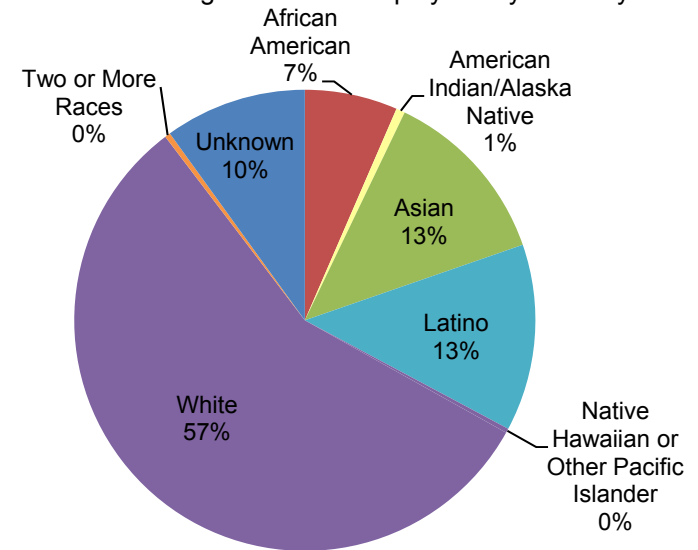


Figure 5.2. Mesa College Fall 2012 Employees by Ethnicity



Mesa College Fact Book 2013

Table 5.1. Mesa College Fall 2012 Employees by Ethnicity

	African American		American Indian/Alaska Native		Asian		Latino		Native Hawaiian or Other Pacific Islander		White		Two or More Races		Unreported		Total
Total Employees:	85	7%	8	1%	164	13%	171	13%	4	0%	738	57%	5	0%	130	10%	1,305
Male:	39	7%	5	1%	54	9%	85	15%	3	1%	333	57%	0	0%	64	11%	583
Female:	46	6%	3	0%	110	15%	86	12%	1	0%	405	56%	5	1%	66	9%	722
Classified Staff:	15	10%	0	0%	20	13%	29	19%	1	1%	71	48%	0	0%	13	9%	149
Male:	4	8%	0	0%	6	12%	11	22%	1	2%	20	41%	0	0%	7	14%	49
Female:	11	11%	0	0%	14	14%	18	18%	0	0%	51	51%	0	0%	6	6%	100
Non-Academic Hourly:	15	8%	0	0%	48	25%	33	17%	3	2%	67	35%	4	2%	20	11%	190
Male:	8	10%	0	0%	17	20%	18	21%	2	2%	26	31%	0	0%	13	15%	84
Female:	7	7%	0	0%	31	29%	15	14%	1	1%	41	39%	4	4%	7	7%	106
Contract Faculty:	15	7%	2	1%	21	10%	26	12%	0	0%	126	58%	0	0%	26	12%	216
Male:	7	7%	1	1%	7	7%	12	12%	0	0%	62	61%	0	0%	12	12%	101
Female:	8	7%	1	1%	14	12%	14	12%	0	0%	64	56%	0	0%	14	12%	115
Adjunct Faculty:	35	5%	6	1%	71	10%	77	11%	0	0%	458	64%	1	0%	66	9%	714
Male:	18	5%	4	1%	24	7%	43	13%	0	0%	218	65%	0	0%	30	9%	337
Female:	17	5%	2	1%	47	12%	34	9%	0	0%	240	64%	1	0%	36	10%	377
Management:	1	8%	0	0%	0	0%	2	15%	0	0%	7	54%	0	0%	3	23%	13
Male:	0	0%	0	0%	0	0%	0	0%	0	0%	5	71%	0	0%	2	29%	7
Female:	1	17%	0	0%	0	0%	2	33%	0	0%	2	33%	0	0%	1	17%	6
Supervisory Staff:	4	17%	0	0%	4	17%	4	17%	0	0%	9	39%	0	0%	2	9%	23
Male:	2	40%	0	0%	0	0%	1	20%	0	0%	2	40%	0	0%	0	0%	5
Female:	2	11%	0	0%	4	22%	3	17%	0	0%	7	39%	0	0%	2	11%	18

Table 5.2. Mesa College Employees by Gender and Employment Status

Gender		Employment Status	
Female	55%	Full-Time/Contract	31%
Male	45%	Hourly/Adjunct	69%

Source: SDCCD Information System