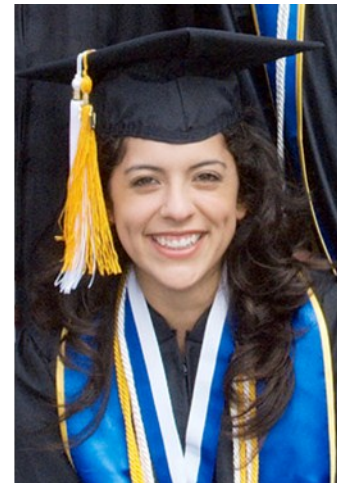


# Fact Book

## Miramar College



*Prepared by:*  
Office of Institutional Research and Planning  
September 2013

# Miramar College Fact Book 2013

---

Overview & Mission .....	1	Annual Retention Rates	
<b>Section I. Headcount and Student Characteristics</b> .....	3	Overall .....	37
Section Overview .....	4	By Gender.....	38
Overall .....	5	By Ethnicity.....	39
By Gender.....	6	By Age.....	40
By Ethnicity.....	7	Annual GPA	
By Age.....	8	Overall .....	41
By Enrollment Status .....	9	By Gender.....	42
By Educational Objective .....	10	By Ethnicity .....	43
By Primary Language.....	12	By Age.....	44
By Prior Education Level .....	13	Annual Awards Conferred	
By Service Area of Residence .....	14	Overall .....	45
By First Generation .....	15	By Gender.....	46
By Residency Status.....	16	By Ethnicity.....	48
By DSPS .....	17	By Age.....	52
By EOPS.....	18	Annual Transfer	
By Day, Evening, & Online Status .....	19	Overall .....	55
By Military Status.....	20	By Gender.....	56
By Units Attempted by Units Earned .....	21	By Ethnicity.....	57
<b>Section II. Persistence Rates</b> .....	23	By Age.....	58
Section Overview .....	24	By CSU-UC/Private (In-state)/Out-of-State .....	59
Overall .....	25	By CSU/UC.....	60
By Gender.....	26	By Institution Type (Private vs. Public).....	61
By Ethnicity.....	27	<b>Section IV. Productivity and Efficiency</b> .....	62
By Age.....	29	Section Overview .....	63
<b>Section III. Student Completion</b> .....	31	FTES (Resident, Nonresident, and Overall) .....	64
Section Overview .....	32	Enrollments (Online and On Campus) .....	67
Annual Success Rates		Fill Rates .....	68
Overall .....	33	Load .....	70
By Gender.....	34	<b>Section V. Human Resources</b> .....	71
By Ethnicity.....	35	Section Overview .....	72
By Age.....	36	Fall 2012 Employee Breakdown.....	73

# Miramar College Fact Book 2013

---

## OVERVIEW

This Fact Book is a publication of the Office of Institutional Research and Planning for the San Diego Community College District. It is designed to serve the information needs of the college community with a primary focus on student enrollment, demographics, and outcomes.

The Fact Book is a rich source of collegewide trend information that may be used for planning and decision making. The book contains the following five sections:

- 1) **Headcount and Student Characteristics.** Provides information on student demographic characteristics (e.g., age, ethnicity, and educational objective) over five years.
- 2) **Persistence Rates.** Provides information about first-time to college students who complete a fall term and enroll in the subsequent spring and fall terms. The information is also reported by demographic characteristics of interest.
- 3) **Student Completion.** Provides information on students' successful course completion rates, retention rates, GPA, awards conferred, and transfer volume. All of the information is provided in summary form, as well demographic characteristics of interest.
- 4) **Productivity and Efficiency.** Provides information on annual FTES, enrollment and fill rates, and Load (WSCH/FTEF).
- 5) **Human Resources.** Provides information on the number of employees by ethnicity, gender, and employment type.

Each section contains the following benchmarks: 1) The percentage change over the five year period being reported, 2) The collegewide average, and 3) The "All Colleges" in the district averages (excludes Continuing Education).

# Miramar College Fact Book 2013

---

## Mission

San Diego Miramar College's mission is to prepare students to succeed in a complex and dynamic world by providing quality instruction and services in an environment that supports and promotes diversity, while emphasizing innovative programs and partnerships to facilitate transfer preparation, workforce training, and career advancement.

## Vision

San Diego Miramar College will be a hub of education, diversity, and services to our community.

San Diego Miramar College, in keeping with this vision, supports and emphasizes the following guiding values:

- Access, learning and success of all students
- A collegiate college community that offers civility, mutual respect, courtesy, appreciation, and accountability
- Accomplishments of individuals, groups and the college as a whole
- Diversity of our students, staff, faculty and programs that reflect our community
- Creativity, innovation, flexibility and excellence in teaching, learning and service
- The ability to recognize and respond to opportunities
- Collaboration and partnerships
- Participatory governance and communication
- Sustainable practices in construction, curriculum and campus culture

## **Section I** **Headcount and Student Characteristics**

# Miramar College Fact Book 2013

---

This section of the Fact Book contains student headcount by various student characteristics. The headcount figures are individual count of students (unduplicated headcount) based on official census counts at the end of the semester. Drops, never attends, and cancelled classes are excluded, as well as year-long summer in-service classes at Miramar. The headcount information is reported over a period of five years to analyze trends and establish benchmarks. Headcount information is reported by the following segments:

- 1) Overall
- 2) Gender
- 3) Ethnicity
- 4) Age
- 5) Enrollment Status
- 6) Educational Objective
- 7) Primary Language
- 8) Prior Education Level
- 9) Service Area of Residence
- 10) First Generation
- 11) Residency Status
- 12) DSPS
- 13) EOPS
- 14) Day, Evening, and Online Status
- 15) Military Status
- 16) Units Attempted by Units Earned

# Miramar College Fact Book 2013

**Overall Headcount:** Unduplicated student headcount for Miramar College showed a 4% decrease, from 11,930 in Fall 2008 to 11,487 in Fall 2012. Unduplicated student headcount for Miramar College showed a 92% decrease, from 6,813 in Summer 2008 to 574 in Summer 2012. Finally, unduplicated student headcount for Miramar College showed a 4% decrease between Spring 2009 and Spring 2013.

Figure 1.1. Miramar College Overall Headcount (Fall)

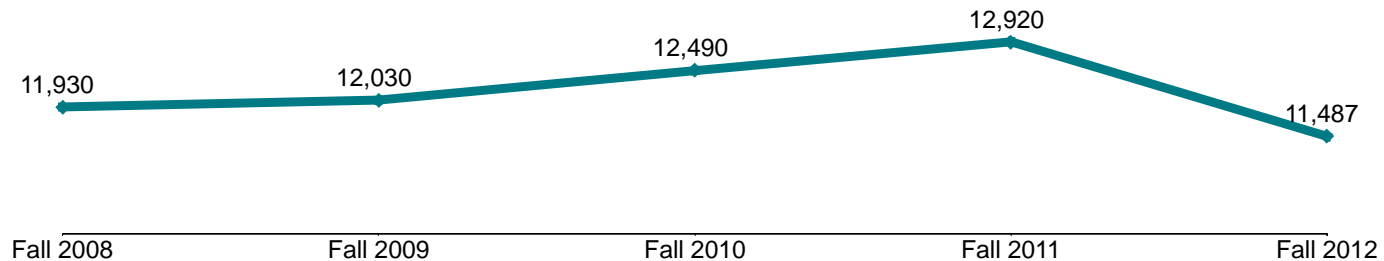


Table 1.1. Miramar College Overall Headcount (Summer, Fall, and Spring)

	Summer 08	Summer 09	Summer 10	Summer 11	Summer 12	% Change Summer 08-12
<b>Total</b>	6,813	6,720	7,530	1,314	574	-92%

	Fall 08	Fall 09	Fall 10	Fall 11	Fall 12	% Change Fall 08-12
<b>Total</b>	11,930	12,030	12,490	12,920	11,487	-4%

	Spring 09	Spring 10	Spring 11	Spring 12	Spring 13	% Change Spring 09-13
<b>Total</b>	13,114	12,462	13,655	13,894	12,621	-4%

Source: SDCCD Information System

# Miramar College Fact Book 2013

**Headcount by Gender:** On average, the male student headcount (55%) was higher than their female student counterpart (45%), which has remained fairly consistent between Fall 2008 and Fall 2012. Both male and female student headcounts decreased (3% & 5%, respectively) between Fall 2008 to Fall 2012, which paralleled the overall student population trend.

Figure 1.2. Miramar College Headcount by Gender

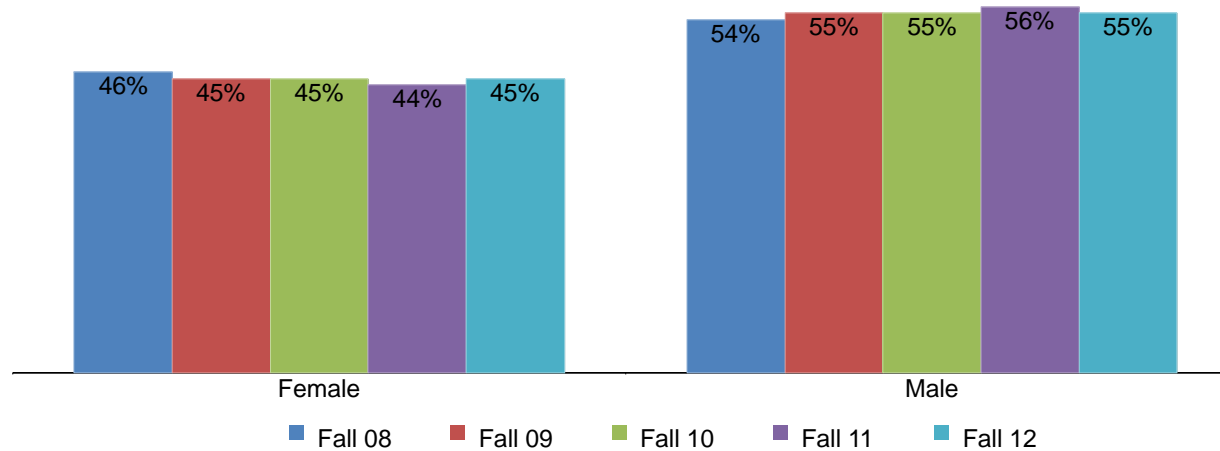


Table 1.2. Miramar College Headcount by Gender

	Fall 08		Fall 09		Fall 10		Fall 11		Fall 12		% Change Fall 08-12	College Average Fall 08-12	All Colleges Average Fall 08-12
Female	5,453	46%	5,397	45%	5,641	45%	5,742	44%	5,182	45%	-5%	45%	51%
Male	6,469	54%	6,631	55%	6,847	55%	7,176	56%	6,304	55%	-3%	55%	49%
Unreported	8	0%	2	0%	2	0%	2	0%	1	0%	-88%	0%	0%
<b>Total</b>	<b>11,930</b>	<b>100%</b>	<b>12,030</b>	<b>100%</b>	<b>12,490</b>	<b>100%</b>	<b>12,920</b>	<b>100%</b>	<b>11,487</b>	<b>100%</b>	<b>-4%</b>	<b>100%</b>	<b>100%</b>

Source: SDCCD Information System



# Miramar College Fact Book 2013

**Headcount by Ethnicity:** The ethnic groups that comprised the largest headcounts between Fall 2008 and Fall 2012 were White students (40%), Latino students (18%), and Asian/Pacific Islander students (15%) on average. At Miramar College, the Latino student population increased 32%. In contrast, the Asian/Pacific Islander student population declined 5% between Fall 2008 and Fall 2012. Both the Latino and African American student headcounts at Miramar College (18% & 6%, respectively) were underrepresented compared to the Latino and African American student headcounts (28% & 8%, respectively) for all colleges in the district. However, Asian/Pacific Islander, Filipino, and White student headcounts at Miramar College (15%, 9%, & 40%, respectively) were overrepresented compared to the same ethnic groups for all colleges in the district (12%, 5%, & 35%, respectively).

Figure 1.3. Miramar College Headcount by Ethnicity

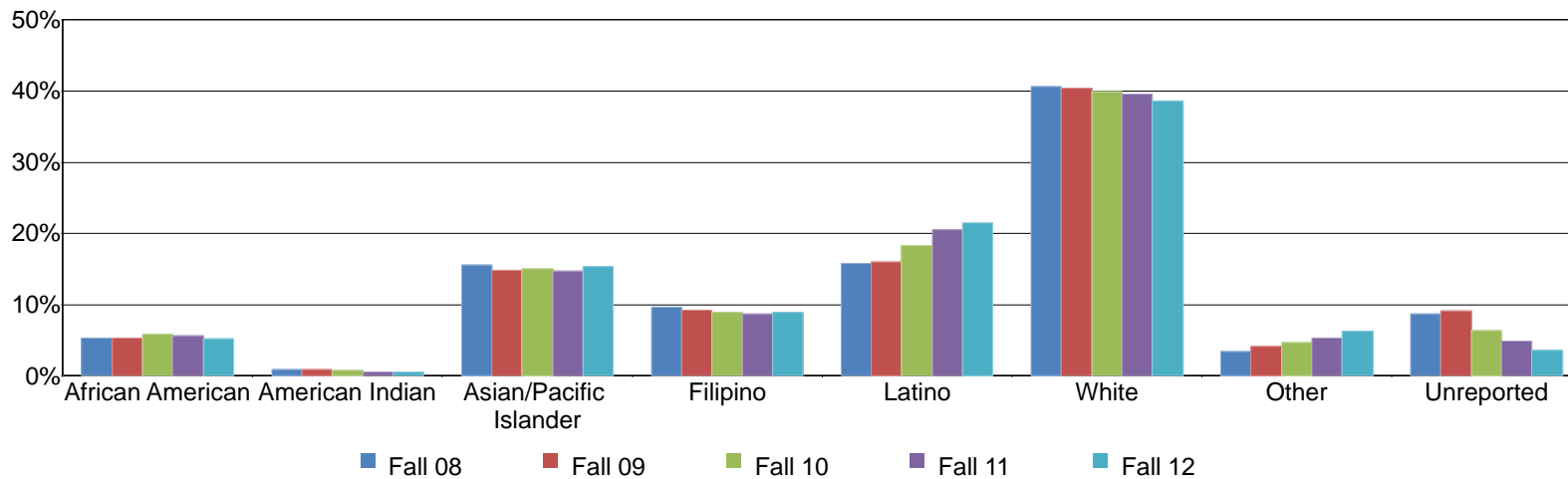


Table 1.3. Miramar College Headcount by Ethnicity

	Fall 08		Fall 09		Fall 10		Fall 11		Fall 12		% Change Fall 08-12	College Average Fall 08-12	All Colleges Average Fall 08-12
African American	638	5%	645	5%	734	6%	733	6%	600	5%	-6%	6%	8%
American Indian	104	1%	102	1%	93	1%	77	1%	59	1%	-43%	1%	1%
Asian/Pacific Islander	1,859	16%	1,786	15%	1,882	15%	1,899	15%	1,767	15%	-5%	15%	12%
Filipino	1,151	10%	1,109	9%	1,112	9%	1,123	9%	1,023	9%	-11%	9%	5%
Latino	1,879	16%	1,926	16%	2,292	18%	2,651	21%	2,471	22%	32%	18%	28%
White	4,852	41%	4,864	40%	4,988	40%	5,114	40%	4,431	39%	-9%	40%	35%
Other	409	3%	495	4%	587	5%	687	5%	714	6%	75%	5%	4%
Unreported	1,038	9%	1,103	9%	802	6%	636	5%	422	4%	-59%	7%	6%
<b>Total</b>	<b>11,930</b>	<b>100%</b>	<b>12,030</b>	<b>100%</b>	<b>12,490</b>	<b>100%</b>	<b>12,920</b>	<b>100%</b>	<b>11,487</b>	<b>100%</b>	<b>-4%</b>	<b>100%</b>	<b>100%</b>

Source: SDCCD Information System

# Miramar College Fact Book 2013

**Headcount by Age:** Students who were between ages 18-24, on average, constituted almost half of the Miramar student population (48%). Most of the age groups displayed a decline in headcount between Fall 2008 and Fall 2012. Specifically, students under 18 years old displayed a decreased trend in headcount (73%). Student headcount for those who were between ages 18-24 years old displayed the greatest disparity at Miramar College when compared to the student headcount of the same age group for all colleges in the district (48% & 52%, respectively).

Figure 1.4. Miramar College Headcount by Age

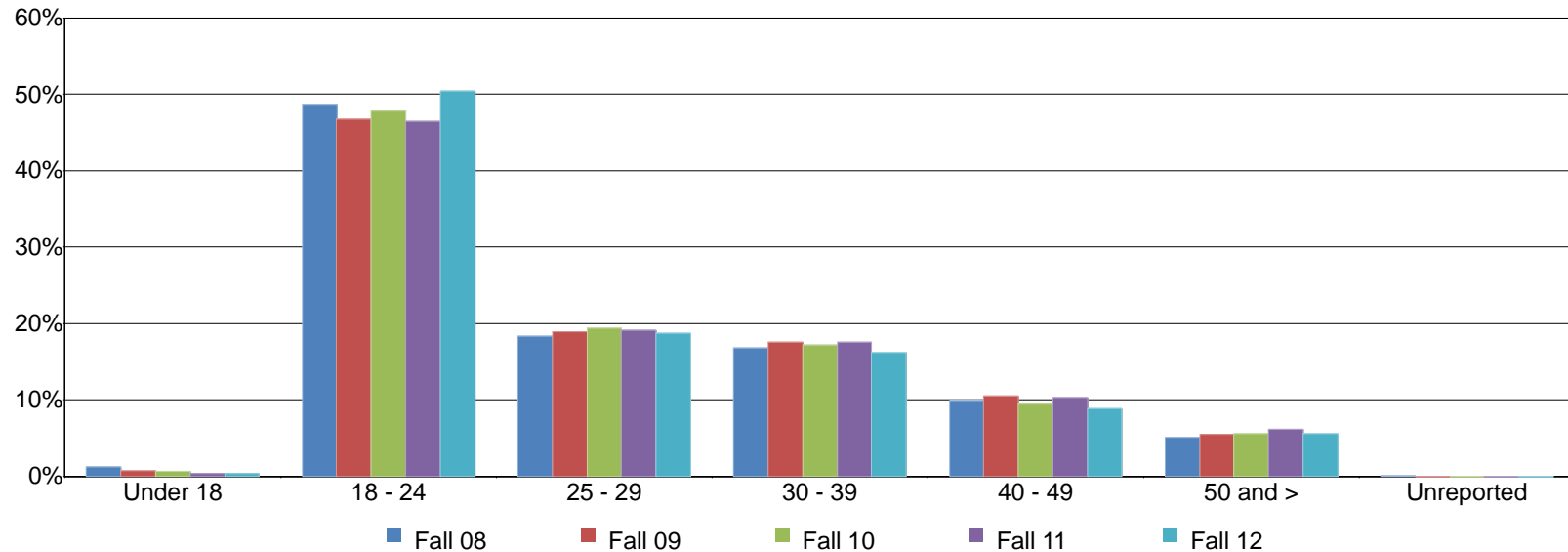


Table 1.4. Miramar College Headcount by Age

	Fall 08		Fall 09		Fall 10		Fall 11		Fall 12		% Change Fall 08-12	College Average Fall 08-12	All Colleges Average Fall 08-12
Under 18	146	1%	92	1%	78	1%	51	0%	39	0%	-73%	1%	3%
18 - 24	5,808	49%	5,628	47%	5,966	48%	6,003	46%	5,787	50%	-0%	48%	52%
25 - 29	2,183	18%	2,280	19%	2,424	19%	2,472	19%	2,148	19%	-2%	19%	18%
30 - 39	2,001	17%	2,108	18%	2,147	17%	2,263	18%	1,864	16%	-7%	17%	14%
40 - 49	1,184	10%	1,263	10%	1,181	9%	1,333	10%	1,015	9%	-14%	10%	7%
50 and >	605	5%	659	5%	694	6%	798	6%	634	6%	5%	6%	5%
Unreported	3	0%	0	0%	0	0%	0	0%	0	0%	-100%	0%	0%
<b>Total</b>	<b>11,930</b>	<b>100%</b>	<b>12,030</b>	<b>100%</b>	<b>12,490</b>	<b>100%</b>	<b>12,920</b>	<b>100%</b>	<b>11,487</b>	<b>100%</b>	<b>-4%</b>	<b>100%</b>	<b>100%</b>

Source: SDCCD Information System

# Miramar College Fact Book 2013

**Headcount by Enrollment Status:** On average, 64% of the student population comprised continuing students. The number of returning transfer students declined 39%, from 741 in Fall 2008 to 455 in Fall 2012. However, the number of returning students who were enrolled at Miramar College increased 10%, from 993 in Fall 2008 to 1,092 in Fall 2012.

Figure 1.5. Miramar College Headcount by Enrollment Status

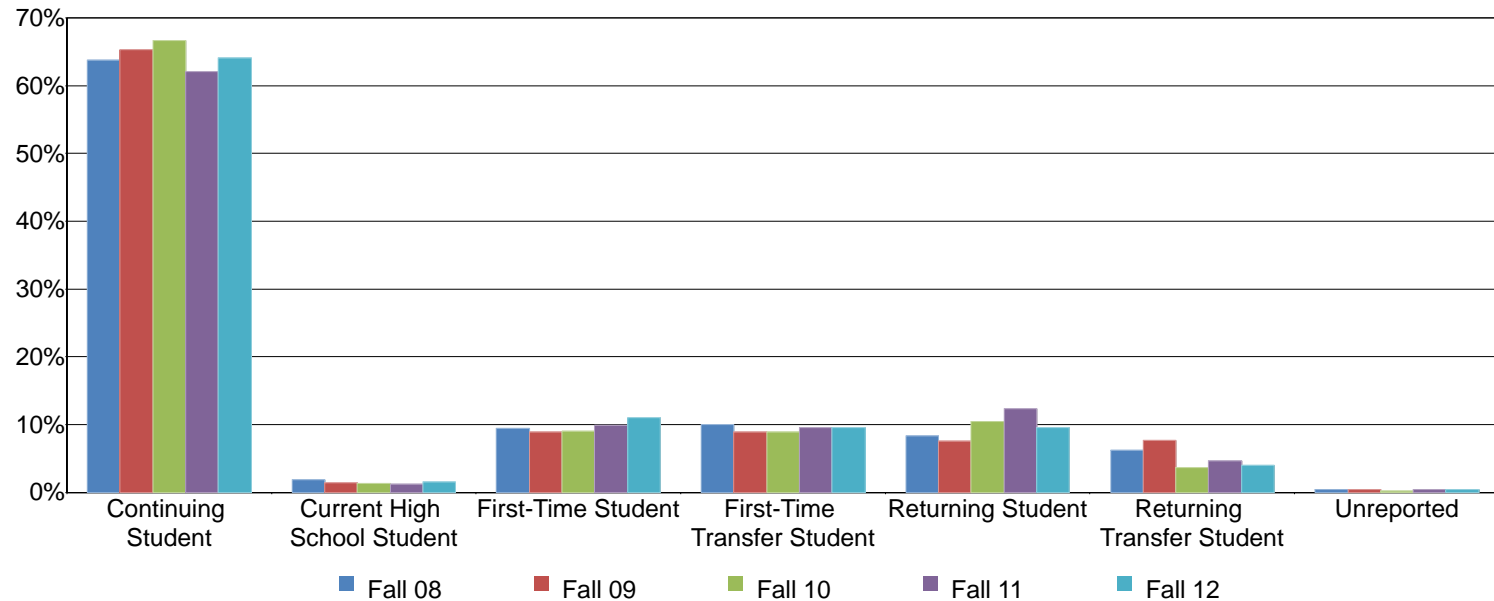


Table 1.5. Miramar College Headcount by Enrollment Status

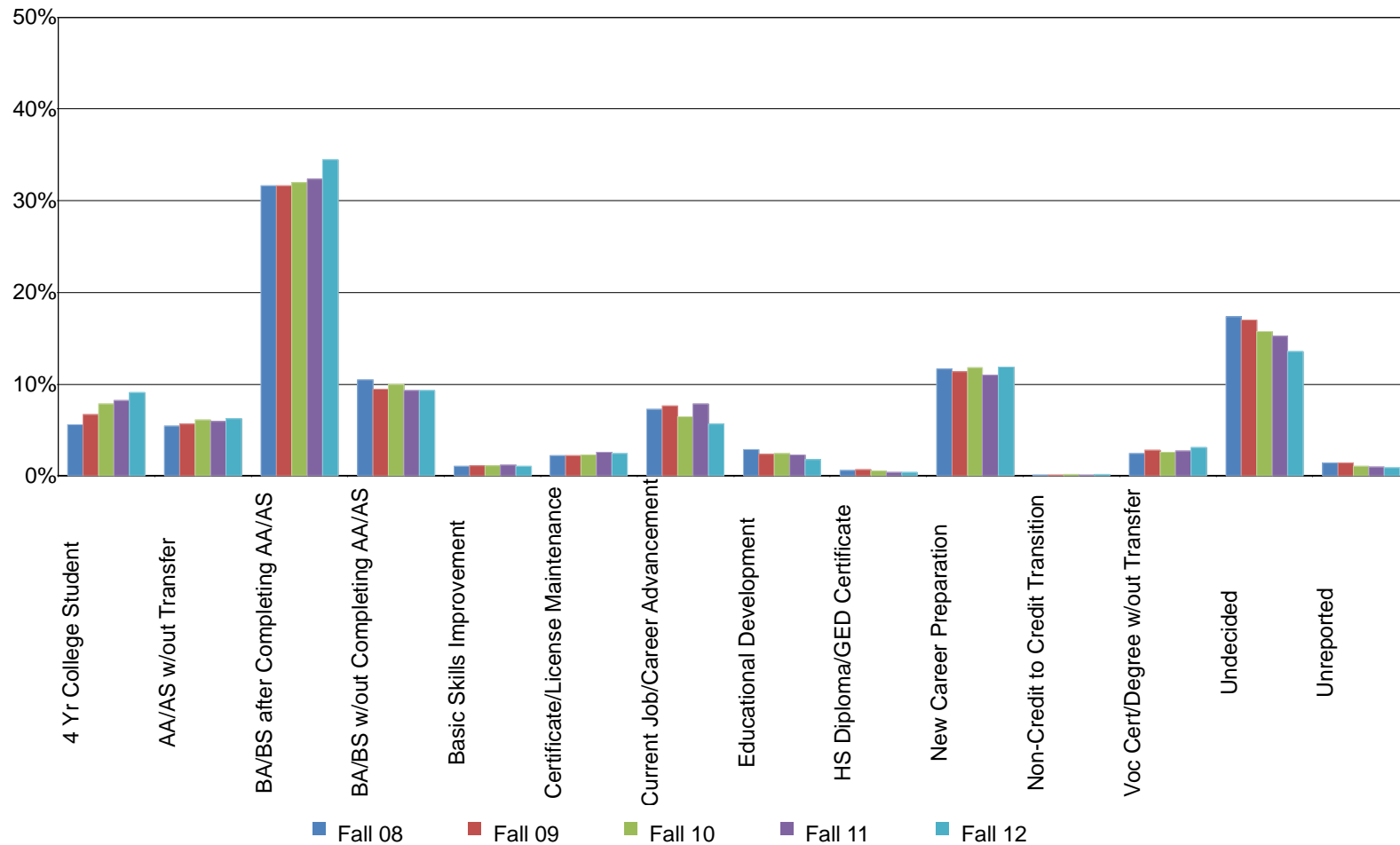
	Fall 08		Fall 09		Fall 10		Fall 11		Fall 12		% Change Fall 08-12	College Average Fall 08-12	All Colleges Average Fall 08-12
Continuing Student	7,614	64%	7,860	65%	8,327	67%	8,029	62%	7,367	64%	-3%	64%	4%
Current High School Student	218	2%	164	1%	157	1%	145	1%	169	1%	-22%	1%	11%
First-Time Student	1,130	9%	1,067	9%	1,122	9%	1,270	10%	1,257	11%	11%	10%	11%
First-Time Transfer Student	1,190	10%	1,069	9%	1,105	9%	1,234	10%	1,103	10%	-7%	9%	4%
Returning Student	993	8%	913	8%	1,305	10%	1,596	12%	1,092	10%	10%	10%	7%
Returning Transfer Student	741	6%	915	8%	450	4%	594	5%	455	4%	-39%	5%	63%
Unreported	44	0%	42	0%	24	0%	52	0%	44	0%	0%	0%	0%
<b>Total</b>	<b>11,930</b>	<b>100%</b>	<b>12,030</b>	<b>100%</b>	<b>12,490</b>	<b>100%</b>	<b>12,920</b>	<b>100%</b>	<b>11,487</b>	<b>100%</b>	<b>-4%</b>	<b>100%</b>	<b>100%</b>

Source: SDCCD Information System

# Miramar College Fact Book 2013

**Headcount by Educational Objective:** Almost half of the Miramar student population (42%) selected transfer to obtain a BA/BS with or without completing an AA/AS degree as their educational objective during the five terms being reported. Between Fall 2008 and Fall 2012, the educational objectives that made the most gains in popularity were non-credit to credit transition (increased by 125%) and 4 year college student (increased by 57%). In contrast, students who selected to obtain a high school diploma/GED and educational development as educational objectives decreased 33% and 41%, respectively.

Figure 1.6. Miramar College Headcount by Educational Objective



# Miramar College Fact Book 2013

Table 1.6. Miramar College Headcount by Educational Objective

	Fall 08		Fall 09		Fall 10		Fall 11		Fall 12		% Change Fall 08-12	College Average Fall 08-12	All Colleges Average Fall 08-12
4 Yr College Student	665	6%	800	7%	979	8%	1,065	8%	1,047	9%	57%	7%	9%
AA/AS w/out Transfer	644	5%	682	6%	762	6%	767	6%	714	6%	11%	6%	5%
BA/BS after Completing AA/AS	3,771	32%	3,800	32%	3,999	32%	4,175	32%	3,961	34%	5%	32%	34%
BA/BS w/out Completing AA/AS	1,248	10%	1,140	9%	1,242	10%	1,201	9%	1,072	9%	-14%	10%	11%
Basic Skills Improvement	124	1%	137	1%	136	1%	157	1%	121	1%	-2%	1%	1%
Certificate/License Maintenance	267	2%	268	2%	287	2%	330	3%	283	2%	6%	2%	2%
Current Job/Career Advancement	866	7%	916	8%	808	6%	1,010	8%	650	6%	-25%	7%	4%
Educational Development	344	3%	288	2%	305	2%	291	2%	204	2%	-41%	2%	3%
HS Diploma/GED Certificate	69	1%	78	1%	69	1%	47	0%	46	0%	-33%	1%	1%
New Career Preparation	1,387	12%	1,362	11%	1,470	12%	1,418	11%	1,365	12%	-2%	12%	11%
Non-Credit to Credit Transition	8	0%	10	0%	17	0%	14	0%	18	0%	125%	0%	0%
Voc Cert/Degree w/out Transfer	293	2%	340	3%	321	3%	351	3%	351	3%	20%	3%	2%
Undecided	2,073	17%	2,040	17%	1,962	16%	1,965	15%	1,555	14%	-25%	16%	16%
Unreported	171	1%	169	1%	133	1%	129	1%	100	1%	-42%	1%	1%
<b>Total</b>	<b>11,930</b>	<b>100%</b>	<b>12,030</b>	<b>100%</b>	<b>12,490</b>	<b>100%</b>	<b>12,920</b>	<b>100%</b>	<b>11,487</b>	<b>100%</b>	<b>-4%</b>	<b>100%</b>	<b>100%</b>

Source: SDCCD Information System

# Miramar College Fact Book 2013

**Headcount by Primary Language:** On average, 94% of the Miramar student population spoke English as their primary language. This was comparable to the overall student population for all colleges in the district (93%). There was a decrease for those who reported speaking English (4%), while those who spoke a language other than English increased 8%.

Figure 1.7. Miramar College Headcount by Primary Language

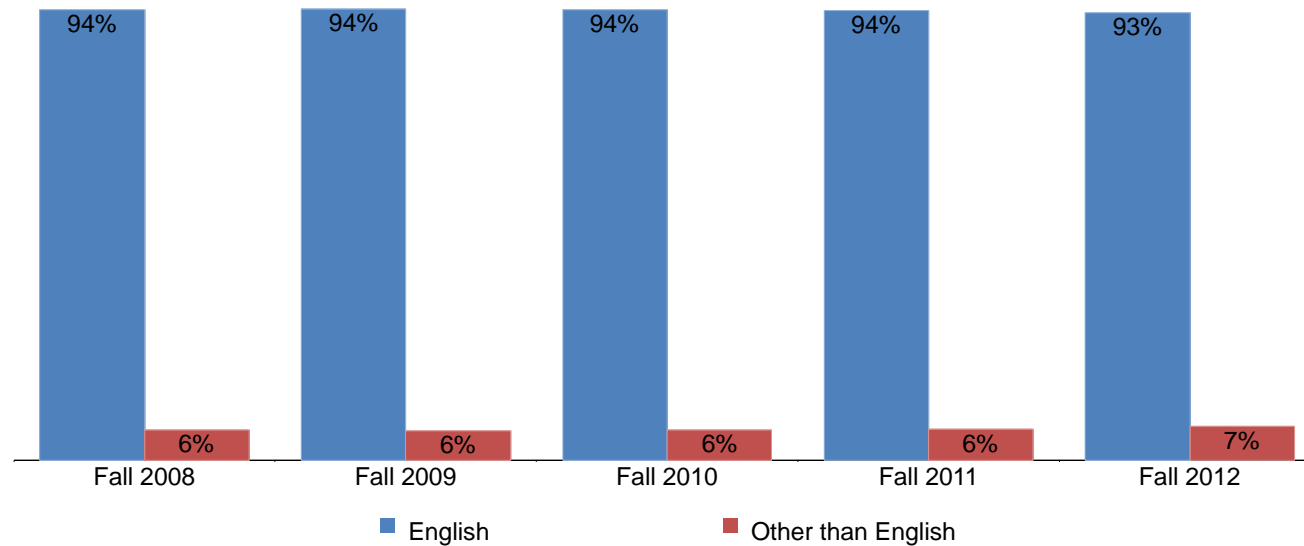


Table 1.7. Miramar College Headcount by Primary Language

	Fall 08		Fall 09		Fall 10		Fall 11		Fall 12		% Change Fall 08-12	College Average Fall 08-12	All Colleges Average Fall 08-12
English	11,183	94%	11,292	94%	11,712	94%	12,088	94%	10,689	93%	-4%	94%	93%
Other than English	739	6%	736	6%	775	6%	830	6%	798	7%	8%	6%	7%
Unreported	8	0%	2	0%	3	0%	2	0%	0	0%	-100%	0%	0%
<b>Total</b>	<b>11,930</b>	<b>100%</b>	<b>12,030</b>	<b>100%</b>	<b>12,490</b>	<b>100%</b>	<b>12,920</b>	<b>100%</b>	<b>11,487</b>	<b>100%</b>	<b>-4%</b>	<b>100%</b>	<b>100%</b>

Source: SDCCD Information System

# Miramar College Fact Book 2013

**Headcount by Prior Education Level:** From Fall 2008 to Fall 2012, a majority of the Miramar College student population were high school graduates (66%) on average. Miramar students who had a certification of California high school proficiency increased 8%, from 73 in Fall 2008 to 79 in Fall 2012. On average, 14% of the Miramar student population had a bachelor's degree or higher and 6% had an associate degree.

Figure 1.8. Miramar College Headcount by Prior Education Level

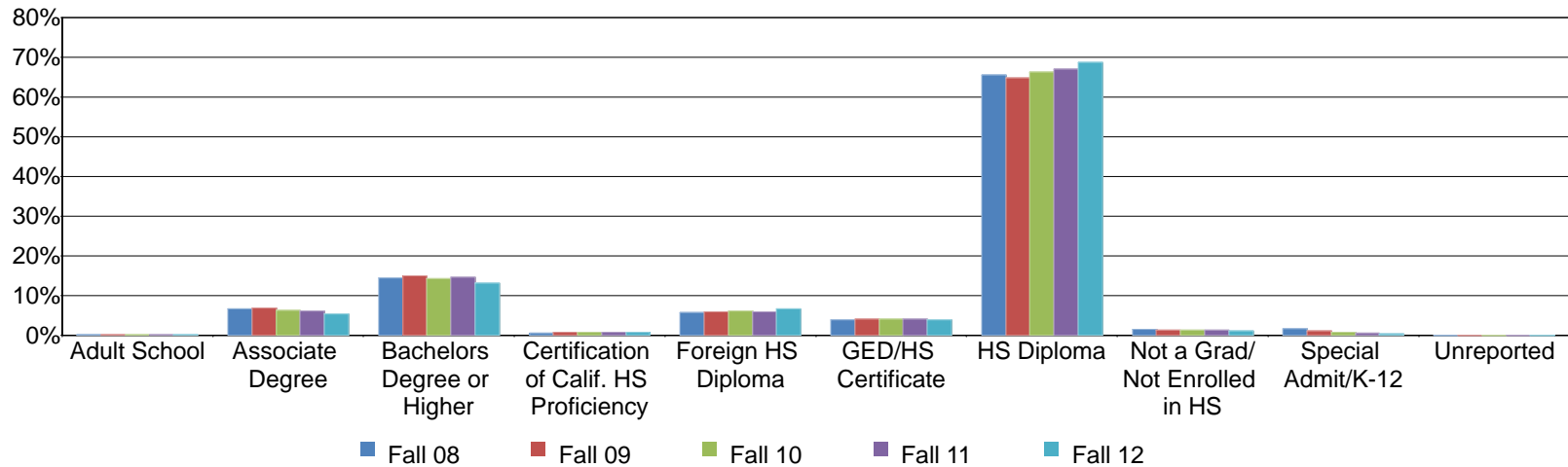


Table 1.8. Miramar College Headcount by Prior Education Level

	Fall 08		Fall 09		Fall 10		Fall 11		Fall 12		% Change Fall 08-12	College Average Fall 08-12	All Colleges Average Fall 08-12
Adult School	23	0%	26	0%	16	0%	19	0%	11	0%	-52%	0%	0%
Associate Degree	787	7%	814	7%	778	6%	784	6%	623	5%	-21%	6%	6%
Bachelors Degree or Higher	1,720	14%	1,798	15%	1,788	14%	1,879	15%	1,517	13%	-12%	14%	14%
Certification of Calif. HS Proficiency	73	1%	87	1%	92	1%	82	1%	79	1%	8%	1%	1%
Foreign HS Diploma	687	6%	720	6%	770	6%	762	6%	761	7%	11%	6%	6%
GED/HS Certificate	460	4%	495	4%	500	4%	521	4%	452	4%	-2%	4%	4%
HS Diploma	7,827	66%	7,807	65%	8,288	66%	8,653	67%	7,891	69%	1%	66%	66%
Not a Grad/Not Enrolled in HS	165	1%	161	1%	165	1%	163	1%	124	1%	-25%	1%	1%
Special Admit/K-12	185	2%	122	1%	93	1%	57	0%	29	0%	-84%	1%	1%
Unreported	3	0%	0	0%	0	0%	0	0%	0	0%	-100%	0%	0%
<b>Total</b>	<b>11,930</b>	<b>100%</b>	<b>12,030</b>	<b>100%</b>	<b>12,490</b>	<b>100%</b>	<b>12,920</b>	<b>100%</b>	<b>11,487</b>	<b>100%</b>	<b>-4%</b>	<b>100%</b>	<b>100%</b>

Source: SDCCD Information System

# Miramar College Fact Book 2013

**Headcount by Service Area of Residence:** Between Fall 2008 and Fall 2012, on average, 27% of the students who attended Miramar College resided within the Miramar service area. Among the three college service areas, the greatest proportion of Miramar students resided within its service area. Forty-eight percent of the students who attended Miramar College resided outside of the Miramar service area.

Figure 1.9. Miramar College Headcount by Service Area of Residence

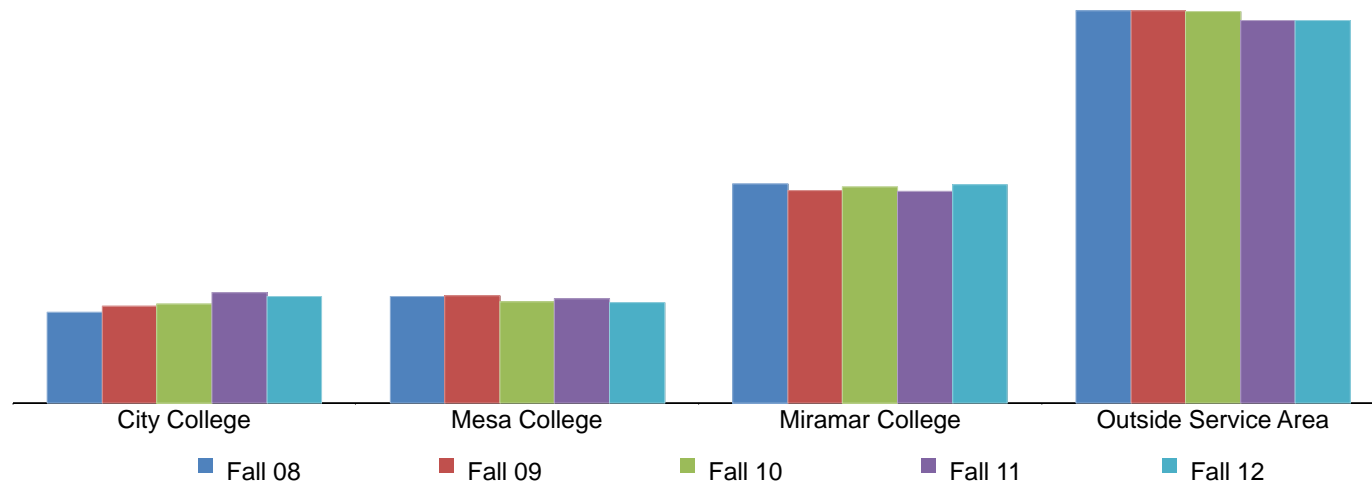


Table 1.9. Miramar College Headcount by Service Area of Residence

	Fall 08		Fall 09		Fall 10		Fall 11		Fall 12		% Change Fall 08-12	College Average Fall 08-12	All Colleges Average Fall 08-12
City College	1,333	11%	1,435	12%	1,530	12%	1,759	14%	1,508	13%	13%	12%	12%
Mesa College	1,573	13%	1,593	13%	1,560	12%	1,661	13%	1,432	12%	-9%	13%	13%
Miramar College	3,231	27%	3,166	26%	3,342	27%	3,378	26%	3,107	27%	-4%	27%	27%
Outside Service Area	5,790	49%	5,836	49%	6,058	49%	6,122	47%	5,440	47%	-6%	48%	48%
Unreported	3	0%	0	0%	0	0%	0	0%	0	0%	-100%	0%	0%
<b>Total</b>	<b>11,930</b>	<b>100%</b>	<b>12,030</b>	<b>100%</b>	<b>12,490</b>	<b>100%</b>	<b>12,920</b>	<b>100%</b>	<b>11,487</b>	<b>100%</b>	<b>-4%</b>	<b>100%</b>	<b>100%</b>

Source: SDCCD Information System



# Miramar College Fact Book 2013

**Headcount by First Generation:** Between Fall 2008 and Fall 2012, on average, one in five Miramar students reported being first generation college students (23%). Those who were first generation college students displayed an increase in headcount (3%), while those who were not first generation college students showed a 5% decrease between Fall 2008 and Fall 2012.

Figure 1.10. Miramar College Headcount by First Generation

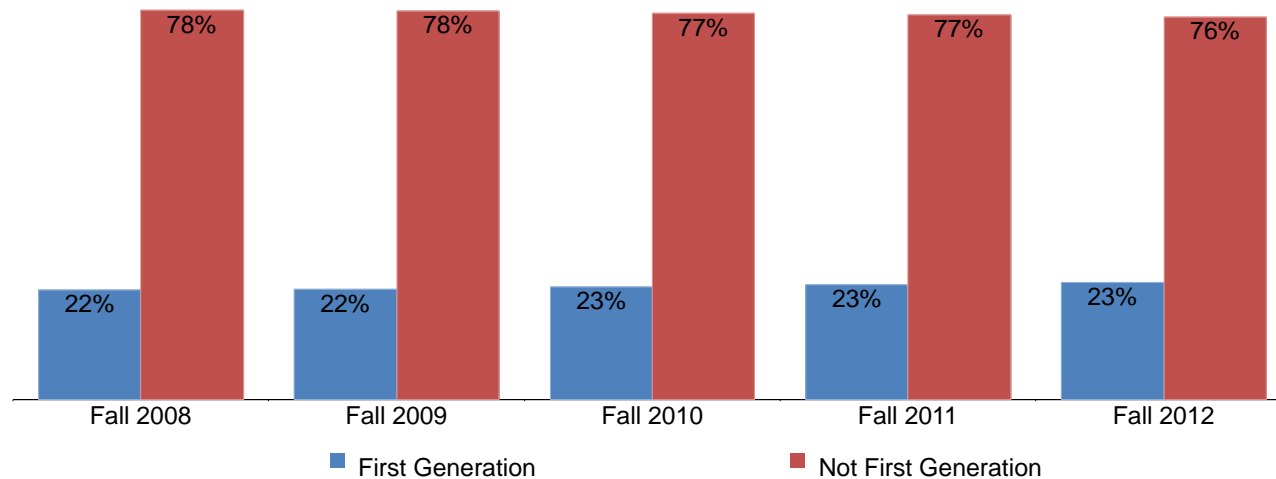


Table 1.10. Miramar College Headcount by First Generation

	Fall 08		Fall 09		Fall 10		Fall 11		Fall 12		% Change Fall 08-12	College Average Fall 08-12	All Colleges Average Fall 08-12
First Generation	2,610	22%	2,659	22%	2,823	23%	2,971	23%	2,697	23%	3%	23%	23%
Not First Generation	9,277	78%	9,345	78%	9,646	77%	9,938	77%	8,777	76%	-5%	77%	77%
Unreported	43	0%	26	0%	21	0%	11	0%	13	0%	-70%	0%	0%
<b>Total</b>	<b>11,930</b>	<b>100%</b>	<b>12,030</b>	<b>100%</b>	<b>12,490</b>	<b>100%</b>	<b>12,920</b>	<b>100%</b>	<b>11,487</b>	<b>100%</b>	<b>-4%</b>	<b>100%</b>	<b>100%</b>

Source: SDCCD Information System

# Miramar College Fact Book 2013

**Headcount by Residency Status:** Over the past five fall terms, on average, 98% of Miramar College’s students were California residents and just 2% were non-residents. Between Fall 2008 and Fall 2012, the number of students who were non-residents remained stable, and the number of students who were residents decreased 4%.

Figure 1.11. Miramar College Headcount by Residency Status

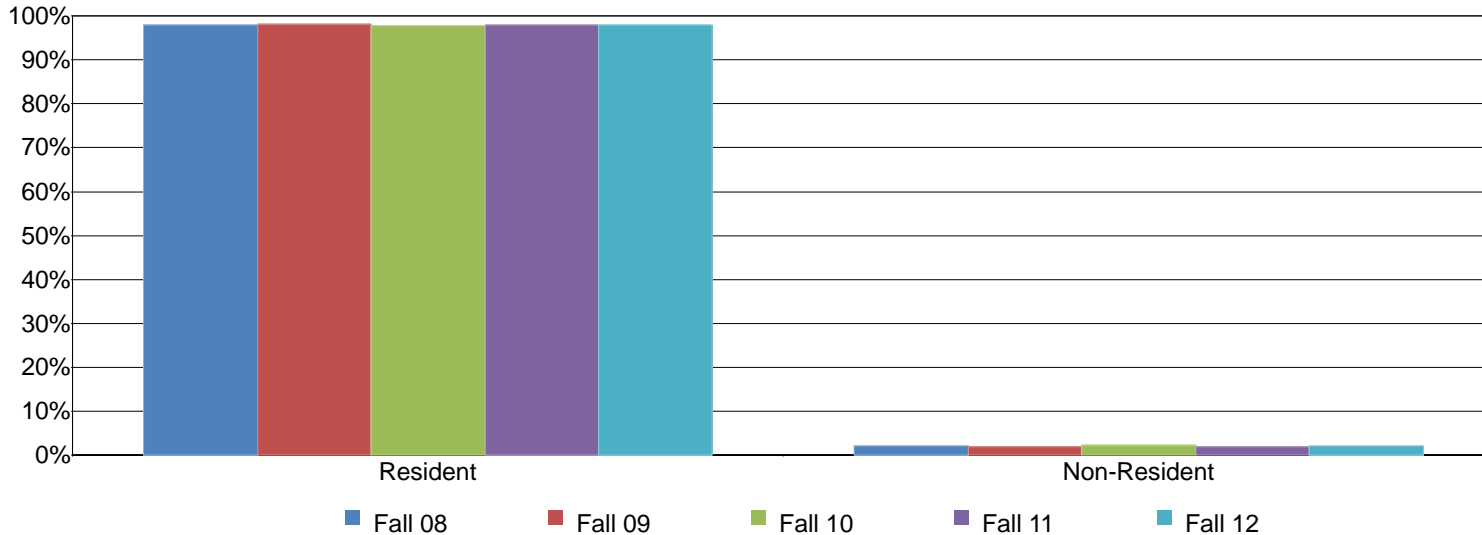


Table 1.11. Miramar College Headcount by Residency Status

	Fall 08		Fall 09		Fall 10		Fall 11		Fall 12		% Change Fall 08-12	College Average Fall 08-12	All Colleges Average Fall 08-12
Resident	11,689	98%	11,813	98%	12,223	98%	12,671	98%	11,249	98%	-4%	98%	98%
Non-Resident	238	2%	217	2%	267	2%	249	2%	238	2%	0%	2%	2%
Unreported	3	0%	0	0%	0	0%	0	0%	0	0%	-100%	0%	0%
<b>Total</b>	<b>11,930</b>	<b>100%</b>	<b>12,030</b>	<b>100%</b>	<b>12,490</b>	<b>100%</b>	<b>12,920</b>	<b>100%</b>	<b>11,487</b>	<b>100%</b>	<b>-4%</b>	<b>100%</b>	<b>100%</b>

Source: SDCCD Information System

# Miramar College Fact Book 2013

**Headcount by Disability Support Programs and Services (DSPS):** On average, 2% of the Miramar student population received disability support services between Fall 2008 and Fall 2012. This was comparable to the percentage of students served by DSPS for all colleges in the district. Moreover, the number of students who received disability services increased 49%, while those who had not received disability services decreased 5% from Fall 2008 to Fall 2012.

Figure 1.12. Miramar College Headcount by Disability Support Programs and Services (DSPS)

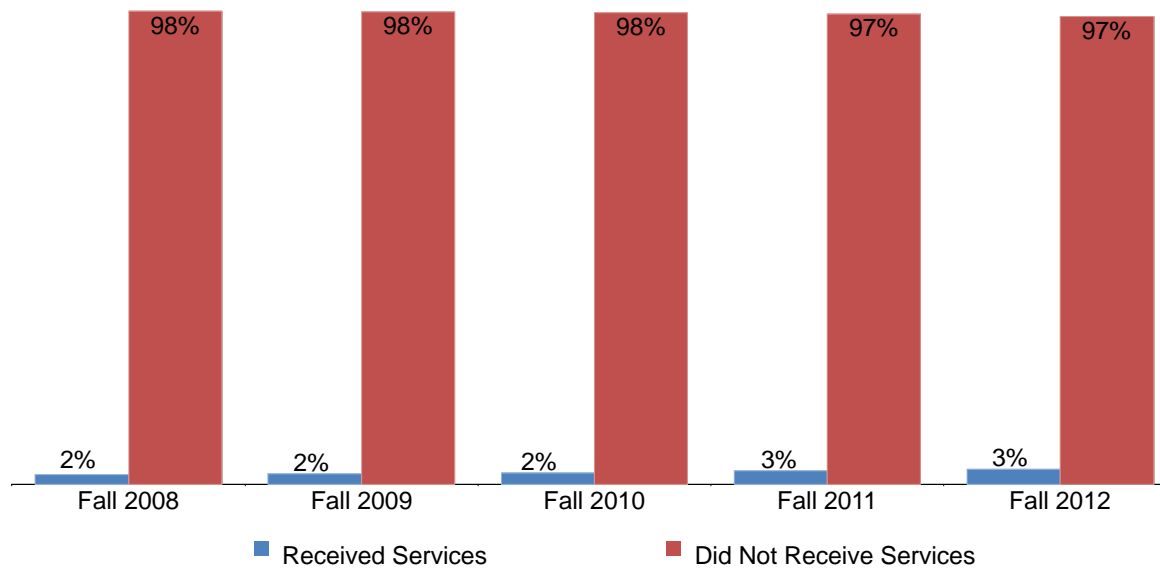


Table 1.12. Miramar College Headcount by Disability Support Programs and Services (DSPS)

	Fall 08		Fall 09		Fall 10		Fall 11		Fall 12		% Change Fall 08-12	College Average Fall 08-12	All Colleges Average Fall 08-12
Received Services	236	2%	262	2%	292	2%	354	3%	352	3%	49%	2%	3%
Did Not Receive Services	11,694	98%	11,768	98%	12,198	98%	12,566	97%	11,135	97%	-5%	98%	97%
<b>Total</b>	<b>11,930</b>	<b>100%</b>	<b>12,030</b>	<b>100%</b>	<b>12,490</b>	<b>100%</b>	<b>12,920</b>	<b>100%</b>	<b>11,487</b>	<b>100%</b>	<b>-4%</b>	<b>100%</b>	<b>100%</b>

Source: SDCCD Information System

# Miramar College Fact Book 2013

**Headcount by Extended Opportunity Programs and Services (EOPS):** On average, 3% of the Miramar student population received EOPS services between Fall 2008 and Fall 2012. This was comparable to the percentage of students served by EOPS for all colleges in the district. Furthermore, students at Miramar who received and had not EOPS services decreased 6% and 4%, respectively, between Fall 2008 and Fall 2012.

Figure 1.13. Miramar College Headcount by Extended Opportunity Programs and Services (EOPS)

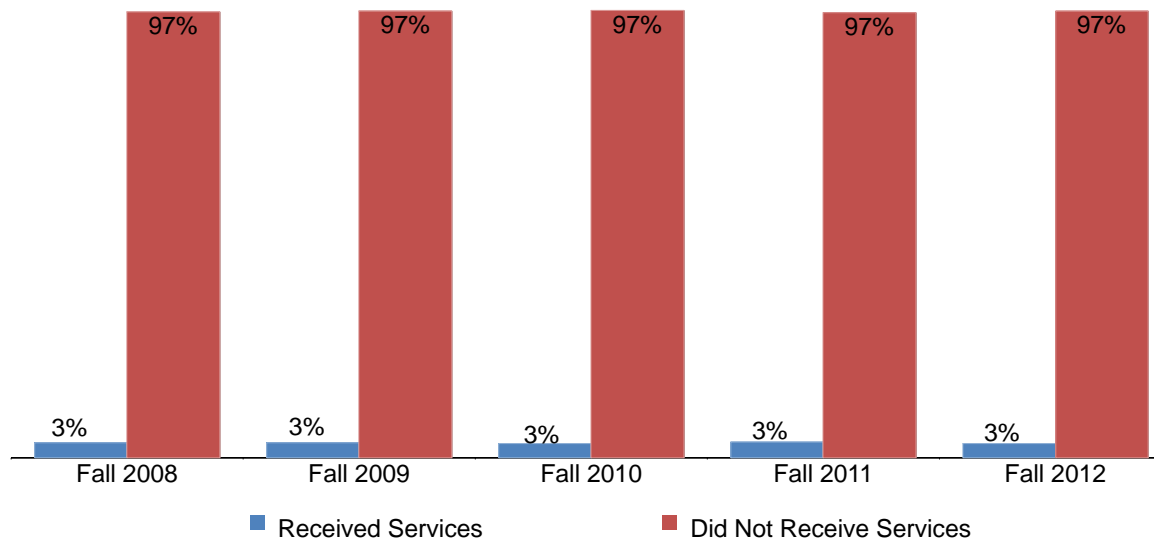


Table 1.13. Miramar College Headcount by Extended Opportunity Programs and Services (EOPS)

	Fall 08		Fall 09		Fall 10		Fall 11		Fall 12		% Change Fall 08-12	College Average Fall 08-12	All Colleges Average Fall 08-12
Received Services	393	3%	391	3%	384	3%	447	3%	370	3%	-6%	3%	3%
Did Not Receive Services	11,537	97%	11,639	97%	12,106	97%	12,473	97%	11,117	97%	-4%	97%	97%
<b>Total</b>	<b>11,930</b>	<b>100%</b>	<b>12,030</b>	<b>100%</b>	<b>12,490</b>	<b>100%</b>	<b>12,920</b>	<b>100%</b>	<b>11,487</b>	<b>100%</b>	<b>-4%</b>	<b>100%</b>	<b>100%</b>

Source: SDCCD Information System

# Miramar College Fact Book 2013

**Headcount by Day, Evening, & Online Status:** On average, 39% of the Miramar student population took day courses exclusively. Approximately one in five students (20%) took online courses exclusively. Students that took evening courses exclusively decreased 35%, from 2,273 in Fall 2008 to 1,475 in Fall 2012. However, students that took day and evening courses increased 34%, from 1,548 in Fall 2008 to 2,074 in Fall 2012.

Figure 1.14. Miramar College Headcount by Day, Evening, & Online Status

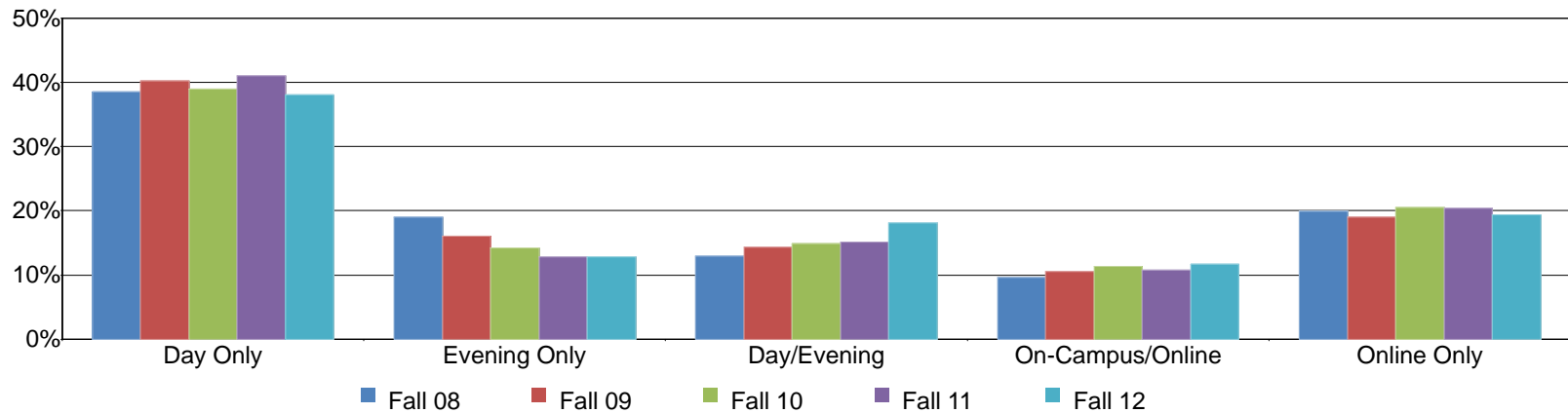


Table 1.14. Miramar College Headcount by Day, Evening, & Online Status

	Fall 08		Fall 09		Fall 10		Fall 11		Fall 12		% Change Fall 08-12	College Average Fall 08-12	All Colleges Average Fall 08-12
Day Only	4,597	39%	4,838	40%	4,876	39%	5,297	41%	4,373	38%	-5%	39%	41%
Evening Only	2,273	19%	1,928	16%	1,778	14%	1,653	13%	1,475	13%	-35%	15%	15%
Day/Evening	1,548	13%	1,715	14%	1,864	15%	1,945	15%	2,074	18%	34%	15%	21%
On-Campus/Online	1,139	10%	1,267	11%	1,417	11%	1,391	11%	1,335	12%	17%	11%	15%
Online Only	2,373	20%	2,282	19%	2,555	20%	2,634	20%	2,230	19%	-6%	20%	8%
<b>Total</b>	<b>11,930</b>	<b>100%</b>	<b>12,030</b>	<b>100%</b>	<b>12,490</b>	<b>100%</b>	<b>12,920</b>	<b>100%</b>	<b>11,487</b>	<b>100%</b>	<b>-4%</b>	<b>100%</b>	<b>100%</b>

Source: SDCCD Information System

# Miramar College Fact Book 2013

**Headcount by Military Status:** Over the past five fall terms, an average, 9% of Miramar College students were active duty military or veterans, and another 5% were dependents. Between Fall 2008 and Fall 2012, the number of activity duty military and veteran students increased 36%, while the number of non-military students decreased 7%, and the number of dependents decreased by 14%.

Figure 1.15. Miramar College Headcount by Military Status

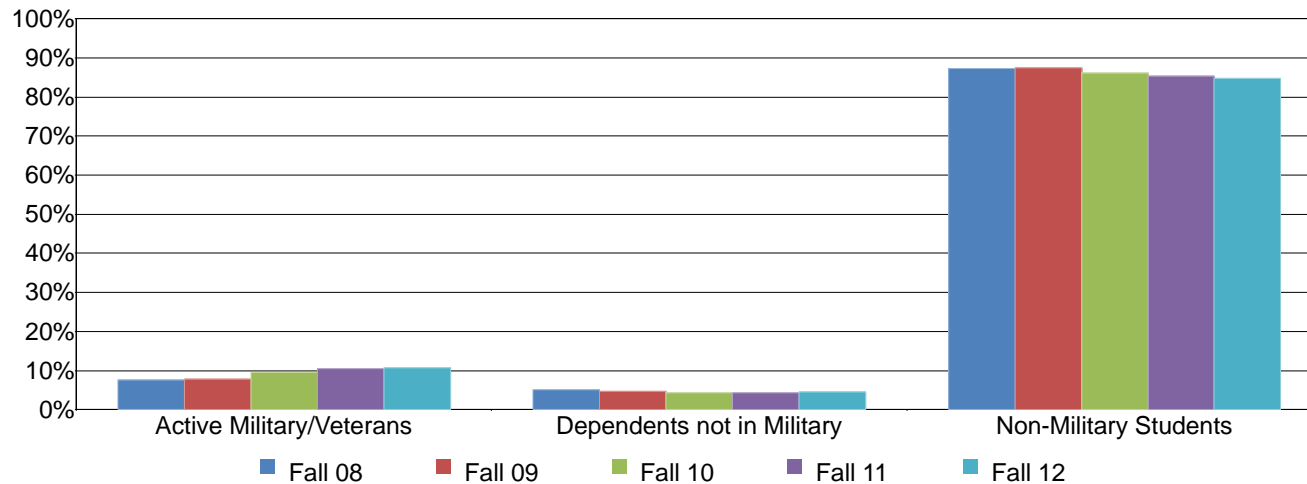


Table 1.15. Miramar College Headcount by Military Status

	Fall 08		Fall 09		Fall 10		Fall 11		Fall 12		% Change Fall 08-12	College Average Fall 08-12	All Colleges Average Fall 08-12
Active Military/Veterans	901	8%	951	8%	1,187	10%	1,349	10%	1,225	11%	36%	9%	7%
Dependents not in Military	617	5%	569	5%	550	4%	557	4%	530	5%	-14%	5%	4%
Non-Military Students	10,412	87%	10,510	87%	10,753	86%	11,014	85%	9,732	85%	-7%	86%	89%
<b>Total</b>	<b>11,930</b>	<b>100%</b>	<b>12,030</b>	<b>100%</b>	<b>12,490</b>	<b>100%</b>	<b>12,920</b>	<b>100%</b>	<b>11,487</b>	<b>100%</b>	<b>-4%</b>	<b>100%</b>	<b>100%</b>

Source: SDCCD Information System

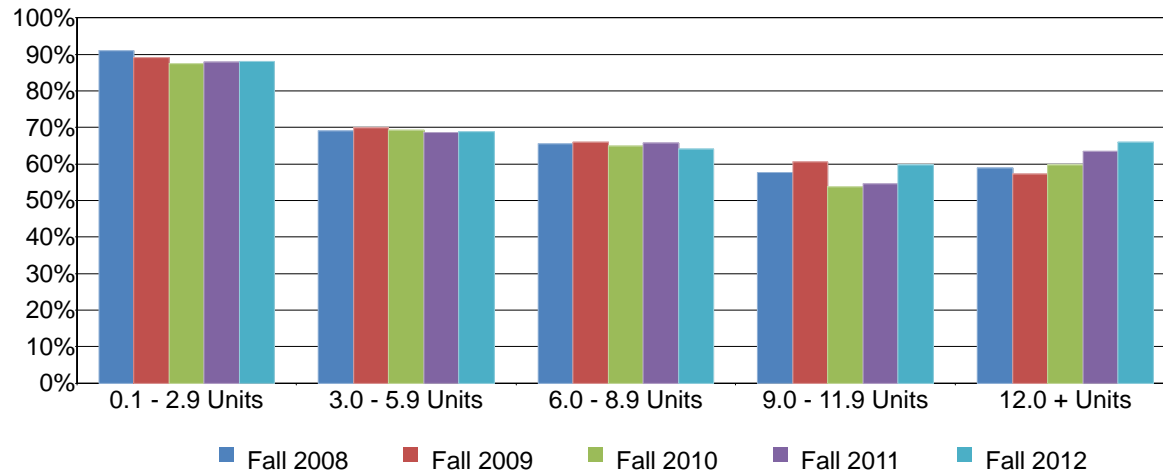
Note. The Dependents not in Military category consists of dependents/spouses of military personnel that are not an active military/veteran.

# Miramar College Fact Book 2013

---

**Headcount by Units Attempted by Units Earned:** Table 1.16 shows the interplay between units attempted (in rows) and units earned (in columns). The greatest proportion of students who attempted and earned units were those in the 0.1-2.9 unit range on average (89%). The least proportion of student who attempted and earned units were those in the 9.0-11.9 unit range on average (57%). Students who attempted and earned 12.0 or more units increased 23% between Fall 2008 and Fall 2012.

Figure 1.16. Miramar College Headcount by Units Attempted by Units Earned



# Miramar College Fact Book 2013

Table 1.16. Miramar College Headcount by Units Attempted by Units Earned

		Units Earned						
		0 Units	0.1 - 2.9 Units	3.0 - 5.9 Units	6.0 - 8.9 Units	9.0 - 11.9 Units	12.0 + Units	
Units Attempted	Fall 2008	0.1 - 2.9 Units	9%	<b>91%</b>				
		3.0 - 5.9 Units	30%	1%	<b>69%</b>			
		6.0 - 8.9 Units	18%	1%	16%	<b>66%</b>		
		9.0 - 11.9 Units	12%	1%	11%	18%	<b>58%</b>	
		12.0 + Units	6%	1%	6%	12%	17%	<b>59%</b>
Fall 2009	0.1 - 2.9 Units	11%	<b>89%</b>					
	3.0 - 5.9 Units	29%	1%	<b>70%</b>				
	6.0 - 8.9 Units	16%	1%	17%	<b>66%</b>			
	9.0 - 11.9 Units	11%	1%	11%	17%	<b>61%</b>		
	12.0 + Units	6%	1%	6%	10%	19%	<b>57%</b>	
Fall 2010	0.1 - 2.9 Units	13%	<b>87%</b>					
	3.0 - 5.9 Units	30%	1%	<b>69%</b>				
	6.0 - 8.9 Units	17%	1%	17%	<b>65%</b>			
	9.0 - 11.9 Units	12%	1%	13%	21%	<b>54%</b>		
	12.0 + Units	7%	1%	6%	10%	16%	<b>60%</b>	
Fall 2011	0.1 - 2.9 Units	12%	<b>88%</b>					
	3.0 - 5.9 Units	30%	1%	<b>69%</b>				
	6.0 - 8.9 Units	18%	1%	15%	<b>66%</b>			
	9.0 - 11.9 Units	12%	1%	13%	20%	<b>55%</b>		
	12.0 + Units	7%	1%	5%	9%	14%	<b>64%</b>	
Fall 2012	0.1 - 2.9 Units	12%	<b>88%</b>					
	3.0 - 5.9 Units	30%	1%	<b>69%</b>				
	6.0 - 8.9 Units	15%	2%	18%	<b>64%</b>			
	9.0 - 11.9 Units	11%	1%	10%	18%	<b>60%</b>		
	12.0 + Units	5%	0%	5%	8%	16%	<b>66%</b>	
% Change Fall 08-12		---	-27%	-3%	-12%	15%	23%	
College Average Fall 08-12		---	89%	69%	65%	57%	61%	

Source: SDCCD Information System

Note. Percent change and average were based on counts.



## **Section II Persistence Rates**

# Miramar College Fact Book 2013

---

This section of the Fact Book contains information on the term and annual persistence rates for first-time to college students. For purposes of this report, the term persistence rate is the percentage of official census enrolled first-time to college students in a fall term who received a grade notation of A, B, C, D, F, P, NP, I, or RD then enrolled in at least one course in the subsequent spring term, and received a grade notation of A, B, C, D, F, P, NP, I, or RD. Annual persistence follows the same operational definition, however this tracks the student from fall to spring to fall enrollment.

Exclusions for both term and annual persistence are as follows: SDSU and UCSD-only students and sections, intersession, tutoring, in-service, and cancelled classes.

The information in this section includes five years of data and is reported as follows:

- 1) Overall
- 2) Gender
- 3) Ethnicity
- 4) Age

# Miramar College Fact Book 2013

**Overall Persistence:** The average term and annual persistence rates of first-time Miramar College students were 66% and 45%, respectively, between the Fall 2007 and Fall 2012 cohorts. Both term and annual persistence rates increased 11% and 10%, respectively, between the Fall 2007 and Fall 2011 cohorts. The average term and annual persistence rates of first-time Miramar College students were lower compared to the average term and annual persistence rate of first-time students enrolled in all colleges in the district (74% & 51%, respectively).

Figure 2.1. Miramar College First-Time Student Overall Annual Persistence

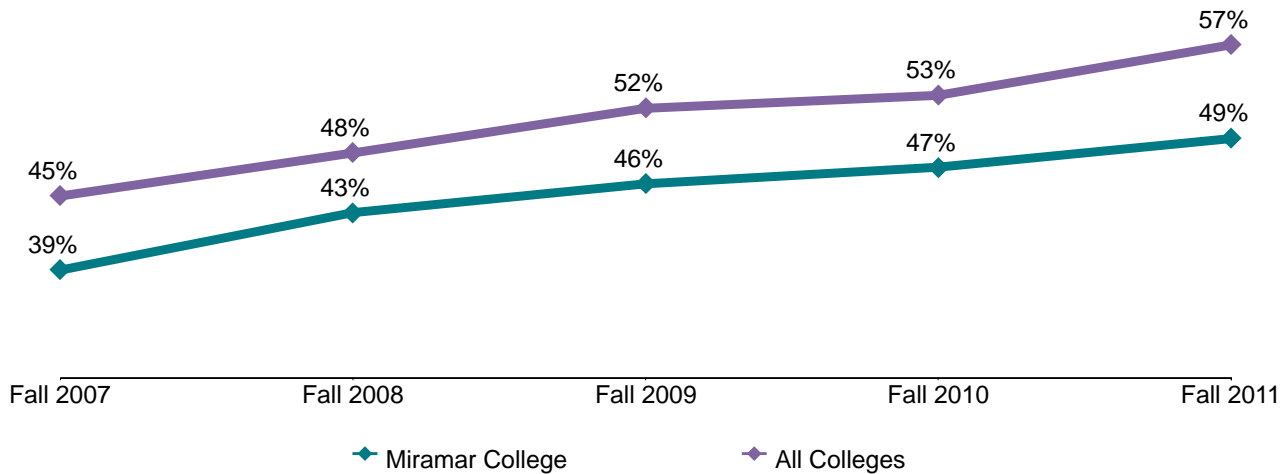


Table 2.1. Miramar College First-Time Student Overall Term and Annual Persistence

Cohort	Fall Enrolled Cohort	Term Persistence Counts	Term Persistence Rates	Annual Persistence Counts	Annual Persistence Rates	All Colleges Term Persistence	All Colleges Annual Persistence
Fall 2007	988	601	61%	383	39%	66%	45%
Fall 2008	971	604	62%	421	43%	69%	48%
Fall 2009	956	607	63%	437	46%	72%	52%
Fall 2010	1,008	662	66%	474	47%	76%	53%
Fall 2011	1,128	782	69%	557	49%	78%	57%
Fall 2012	1,135	822	72%	0	---	79%	---
<b>Total/Average</b>	<b>6,186</b>	<b>4,078</b>	<b>66%</b>	<b>2,272</b>	<b>45%</b>	<b>74%</b>	<b>51%</b>

Source: SDCCD Information System

Note. Overall annual persistence counts and rates exclude the Fall 2012 cohort due to the unavailability of Fall 2013 data.

# Miramar College Fact Book 2013

**Annual Persistence by Gender:** On average, annual persistence rates of female students (47%) were higher than their male student counterpart (44%) between the Fall 2007 and Fall 2011 cohorts. Persistence rates for both female and male students increased 9% and 12%, respectively, between the Fall 2007 and Fall 2011 cohorts.

Figure 2.2. Miramar College First-Time Student Annual Persistence by Gender

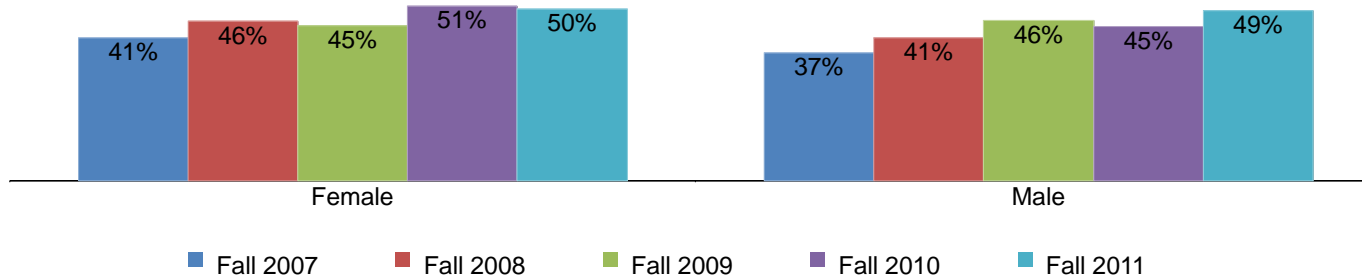


Table 2.2. Miramar College First-Time Student Annual Persistence by Gender

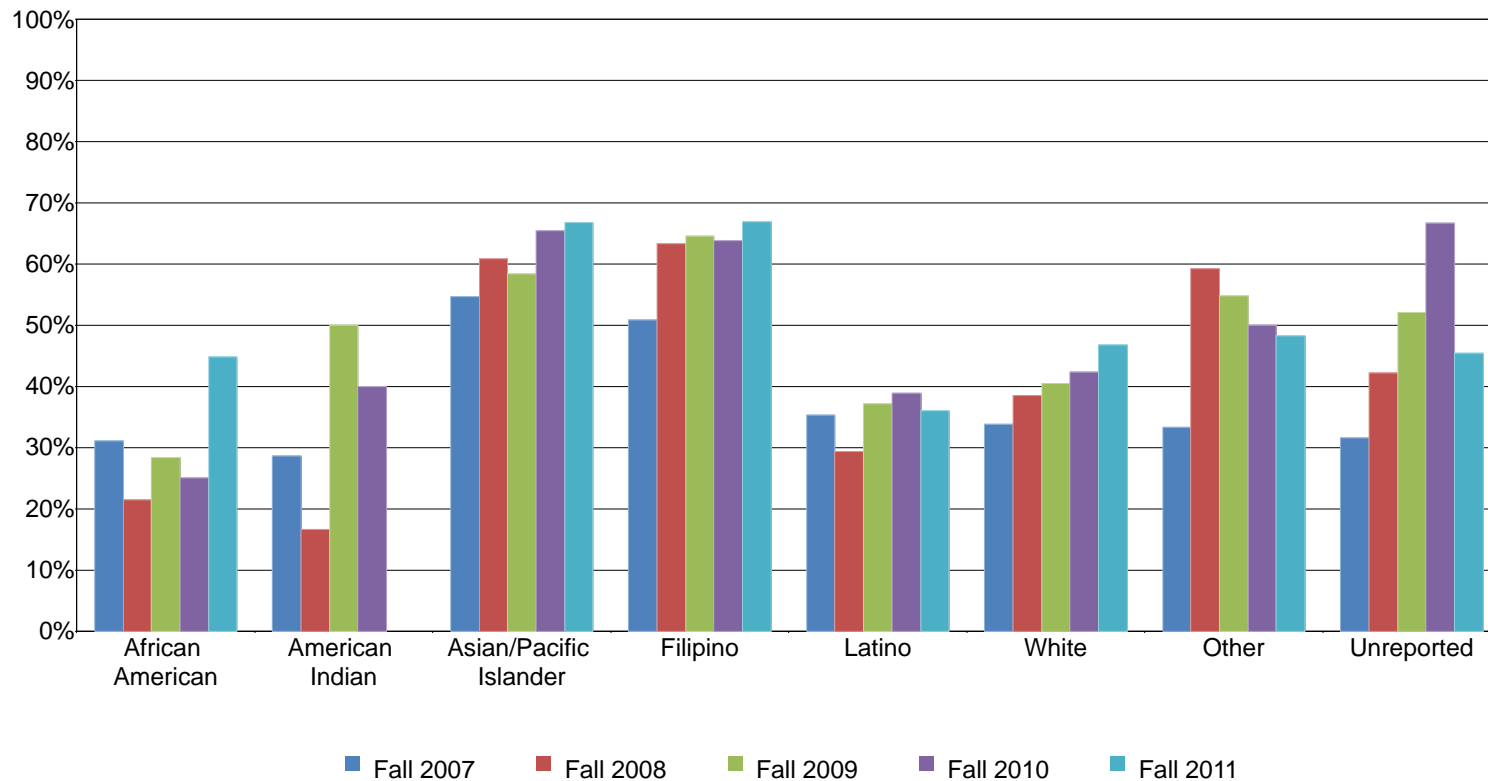
Cohort	Female			Male		
	Fall Enrolled Cohort	Annual Persistence Counts	Annual Persistence Rates	Fall Enrolled Cohort	Annual Persistence Counts	Annual Persistence Rates
Fall 2007	389	161	41%	596	221	37%
Fall 2008	401	185	46%	570	236	41%
Fall 2009	414	186	45%	542	251	46%
Fall 2010	396	200	51%	612	274	45%
Fall 2011	473	235	50%	655	322	49%
<b>Total/Average</b>	<b>2,073</b>	<b>967</b>	<b>47%</b>	<b>2,975</b>	<b>1,304</b>	<b>44%</b>

Source: SDCCD Information System

# Miramar College Fact Book 2013

**Annual Persistence by Ethnicity:** The ethnic groups with the highest annual persistence rates, on average, were Filipino students (62%), Asian/Pacific Islander students (61%), and students who were categorized as ‘Other’ ethnicities (49%). Persistence rates peaked to a high of 67% for both Asian/Pacific Islander and Filipino students in the Fall 2011 cohort. Between the Fall 2007 and Fall 2011 cohorts, persistence rates of Filipino students increased 16%.

Figure 2.3. Miramar College First-Time Student Annual Persistence by Ethnicity



# Miramar College Fact Book 2013

Table 2.3. Miramar College First-Time Student Annual Persistence by Ethnicity

Cohort	African American			American Indian			Asian/Pacific Islander			Filipino		
	Fall Enrolled Cohort	Annual Persistence Counts	Annual Persistence Rates	Fall Enrolled Cohort	Annual Persistence Counts	Annual Persistence Rates	Fall Enrolled Cohort	Annual Persistence Counts	Annual Persistence Rates	Fall Enrolled Cohort	Annual Persistence Counts	Annual Persistence Rates
Fall 2007	58	18	31%	14	4	29%	148	81	55%	112	57	51%
Fall 2008	56	12	21%	6	1	17%	171	104	61%	109	69	63%
Fall 2009	60	17	28%	4	2	50%	144	84	58%	110	71	65%
Fall 2010	44	11	25%	5	2	40%	133	87	65%	105	67	64%
Fall 2011	58	26	45%	2	0	---	193	129	67%	112	75	67%
<b>Total/Average</b>	<b>276</b>	<b>84</b>	<b>30%</b>	<b>31</b>	<b>9</b>	<b>29%</b>	<b>789</b>	<b>485</b>	<b>61%</b>	<b>548</b>	<b>339</b>	<b>62%</b>

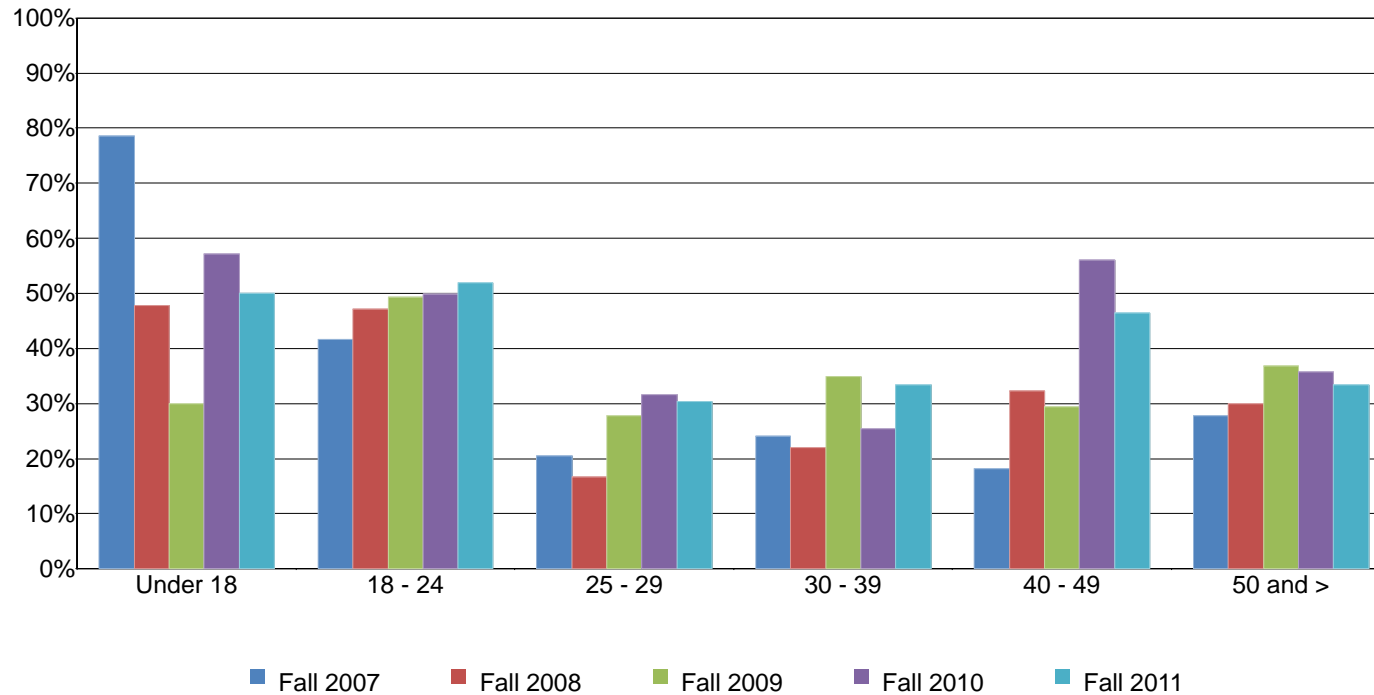
Cohort	Latino			White			Other			Unreported		
	Fall Enrolled Cohort	Annual Persistence Counts	Annual Persistence Rates	Fall Enrolled Cohort	Annual Persistence Counts	Annual Persistence Rates	Fall Enrolled Cohort	Annual Persistence Counts	Annual Persistence Rates	Fall Enrolled Cohort	Annual Persistence Counts	Annual Persistence Rates
Fall 2007	170	60	35%	387	131	34%	42	14	33%	57	18	32%
Fall 2008	167	49	29%	371	143	39%	27	16	59%	64	27	42%
Fall 2009	210	78	37%	338	137	41%	42	23	55%	48	25	52%
Fall 2010	234	91	39%	395	167	42%	74	37	50%	18	12	67%
Fall 2011	291	105	36%	374	175	47%	87	42	48%	11	5	45%
<b>Total/Average</b>	<b>1,072</b>	<b>383</b>	<b>36%</b>	<b>1,865</b>	<b>753</b>	<b>40%</b>	<b>272</b>	<b>132</b>	<b>49%</b>	<b>198</b>	<b>87</b>	<b>44%</b>

Source: SDCCD Information System

# Miramar College Fact Book 2013

**Annual Persistence by Age:** From the Fall 2007 cohort to the Fall 2011 cohort, annual persistence rates were the highest for students under age 18 (54%), followed by students between ages 18 and 24 (48%), and for students between ages 40 and 49 (37%) on average. For students under age 18, persistence rates peaked to a high of 79% in the Fall 2007 cohort. Persistence rates for students between ages 40 and 49 increased 28%, from 18% in the Fall 2007 cohort to 46% in the Fall 2011 cohort. However, students under age 18 displayed a 29% decrease in persistence rates between the Fall 2007 and Fall 2011 cohorts.

Figure 2.4. Miramar College First-Time Student Annual Persistence by Age



# Miramar College Fact Book 2013

Table 2.4. Miramar College First-Time Student Annual Persistence by Age

Cohort	Under 18			18 - 24			25 - 29		
	Fall Enrolled Cohort	Annual Persistence Counts	Annual Persistence Rates	Fall Enrolled Cohort	Annual Persistence Counts	Annual Persistence Rates	Fall Enrolled Cohort	Annual Persistence Counts	Annual Persistence Rates
Fall 2007	14	11	79%	802	334	42%	78	16	21%
Fall 2008	23	11	48%	797	376	47%	60	10	17%
Fall 2009	10	3	30%	764	377	49%	83	23	28%
Fall 2010	14	8	57%	817	407	50%	79	25	32%
Fall 2011	8	4	50%	957	497	52%	66	20	30%
<b>Total/Average</b>	<b>69</b>	<b>37</b>	<b>54%</b>	<b>4,137</b>	<b>1,991</b>	<b>48%</b>	<b>366</b>	<b>94</b>	<b>26%</b>

Cohort	30 - 39			40 - 49			50 and >		
	Fall Enrolled Cohort	Annual Persistence Counts	Annual Persistence Rates	Fall Enrolled Cohort	Annual Persistence Counts	Annual Persistence Rates	Fall Enrolled Cohort	Annual Persistence Counts	Annual Persistence Rates
Fall 2007	54	13	24%	22	4	18%	18	5	28%
Fall 2008	50	11	22%	31	10	32%	10	3	30%
Fall 2009	63	22	35%	17	5	29%	19	7	37%
Fall 2010	59	15	25%	25	14	56%	14	5	36%
Fall 2011	63	21	33%	28	13	46%	6	2	33%
<b>Total/Average</b>	<b>289</b>	<b>82</b>	<b>28%</b>	<b>123</b>	<b>46</b>	<b>37%</b>	<b>67</b>	<b>22</b>	<b>33%</b>

Source: SDCCD Information System



## **Section III Student Completion**

# Miramar College Fact Book 2013

---

This section of the Fact Book contains information on various student completion outcomes which may be considered indirect assessments of student learning. The outcomes included in this section are: 1) Annual Successful Course Completion Rates, 2) Annual Retention Rates, 3) Annual GPA, 4) Annual Awards Conferred, and 5) Annual Transfer Volume. All of the information in this section includes five years of data by gender, age, and ethnicity. The following describes in detail each of the outcomes listed.

- 1) **Successful Course Completion Rates.** The first outcome reported in this section is successful course completion, or student success rate. For purposes of this report, the success rate is the percentage of students who complete a course with a grade of A, B, C, or P out of total official census enrollments. Tutoring, non-credit, and cancelled classes are excluded.
- 2) **Retention Rates.** The second outcome reported in this section is retention rate. For purposes of this report, the retention rate is the percentage of students who complete a course with a grade of A, B, C, D, F, P, NP, I or RD out of total official census enrollments. Tutoring and cancelled classes are excluded.
- 3) **Annual GPA.** The third outcome reported in this section is annual GPA. For purposes of this report, the annual GPA is the total grade point average of all classes for a given academic year.
- 4) **Annual Awards Conferred.** The fourth outcome reported in this section is the annual awards conferred. For purposes of this report, the annual awards conferred are the total number of associate degrees and certificates awarded in a single academic year (summer, fall, and spring). *Note: Annual awards conferred that are reported in this Fact Book are considered preliminary data. Please see the upcoming Awards Conferred Supplement report for final annual awards conferred numbers.*
- 5) **Annual Transfer Volume.** The last outcome reported in this section is the number of students who transfer annually. For the purposes of this report, the annual transfer volume represents the total number of students who transferred to a 4-year institution and were enrolled at an SDCCD college at any time within three semesters prior to transferring (including stop outs). The student must also have completed 12 or more transferrable units from any one of the SDCCD credit colleges within six years prior to transferring to a 4-year institution. *Note: Transfer volume that is reported in this Fact Book are considered preliminary data. Please see the upcoming Spring 2014 SDCCD Transfer Report: A Longitudinal Perspective for final transfer volume numbers.*

# Miramar College Fact Book 2013

**Overall Success Rates:** Miramar College annual success rates remained relatively stable from 2008/09 to 2012/13, with an average of 72%. This success rate average was higher than the success rate average of all colleges in the district (68%). The Miramar College annual success rates were higher, on average, compared to the annual success rates of all colleges in the district between 2008/09 and 2012/13.

Figure 3.1. Miramar College Overall Success Rates

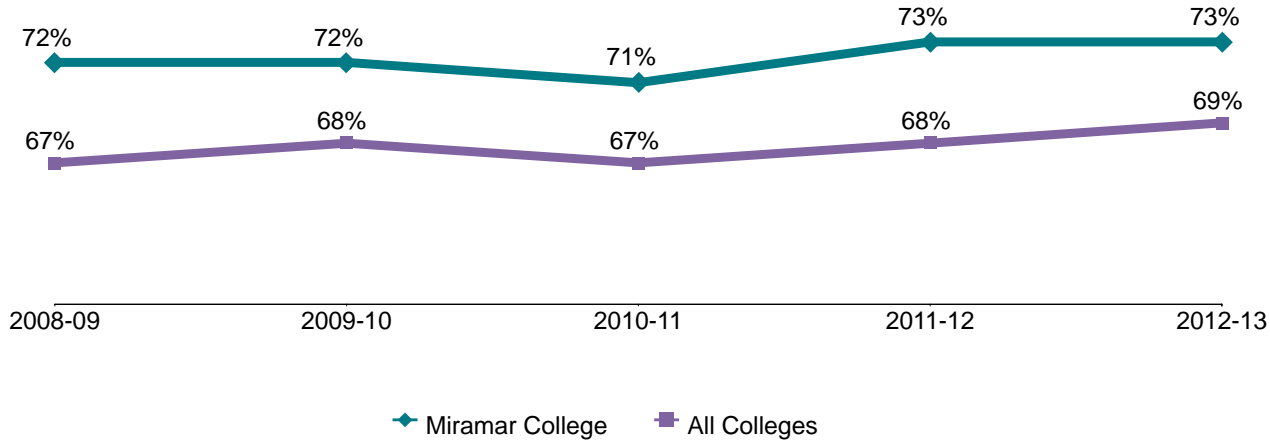


Table 3.1. Miramar College Overall Success Rates

	2008-09	2009-10	2010-11	2011-12	2012-13	% Difference 08/09 - 12/13	College Average 08/09 - 12/13	All Colleges Average 08/09 - 12/13
<b>Average</b>	72%	72%	71%	73%	73%	1%	72%	68%

Source: SDCCD Information System

# Miramar College Fact Book 2013

**Success Rates by Gender:** On average, male student success rates (73%) were slightly higher than their female student counterpart (71%) between 2008/09 and 2012/13. At Miramar College, both male and female students had higher average success rates compared to the average success rates of the male and female student populations of all colleges in the district (67% & 68%, respectively). Both male and female students at Miramar College had average success rates comparable to the average success rate of the general student population at Miramar (72%). However, these rates exceeded the all colleges in the district general student population average success rate of 68%.

Figure 3.2. Miramar College Success Rates by Gender

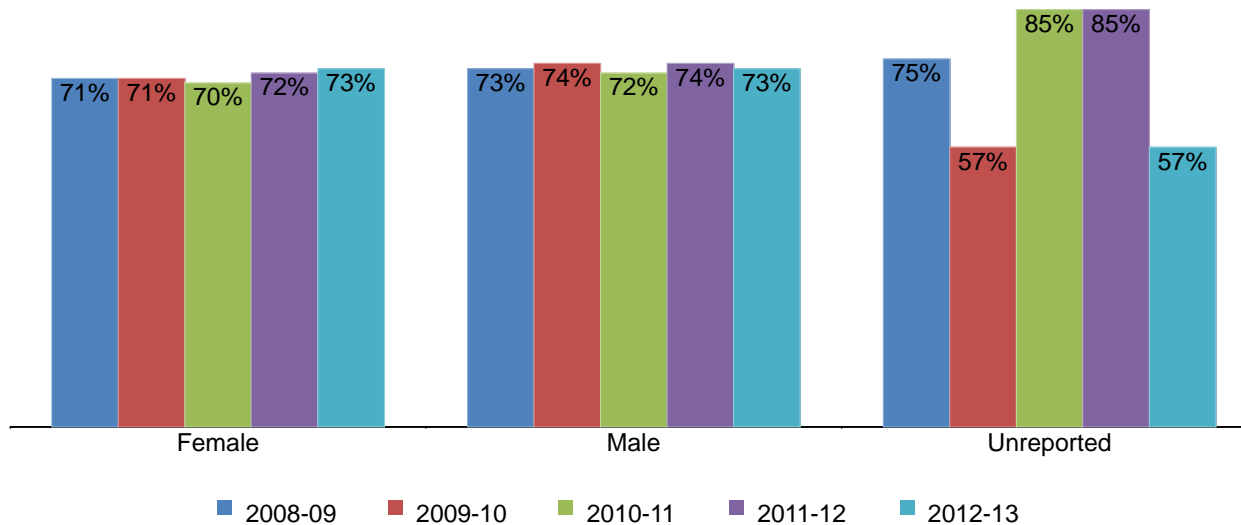


Table 3.2. Miramar College Success Rates by Gender

	2008-09	2009-10	2010-11	2011-12	2012-13	% Difference 08/09 - 12/13	College Average 08/09 - 12/13	All Colleges Average 08/09 - 12/13
Female	71%	71%	70%	72%	73%	2%	71%	68%
Male	73%	74%	72%	74%	73%	0%	73%	67%
Unreported	75%	57%	85%	85%	57%	-18%	75%	74%
<b>Average</b>	<b>72%</b>	<b>72%</b>	<b>71%</b>	<b>73%</b>	<b>73%</b>	<b>1%</b>	<b>72%</b>	<b>68%</b>

Source: SDCCD Information System

Note. Unreported cells may have fewer than 25 students in a given year.

# Miramar College Fact Book 2013

**Success Rates by Ethnicity:** On average, the ethnic groups with the highest success rates between 2008/09 and 2012/13 were White students (76%) and Asian/Pacific Islanders students (74%). The average success rate of African American (59%) students was lower compared to the average success rates of both the general student populations at Miramar College (72%) and all colleges in the district (68%). The average success rates of Asian/Pacific Islander and White students exceeded the same averages. The average success rates of American Indian, Filipino, Latino and students categorized as 'Other' ethnicities were comparable to or higher than the average success rate of the general student population for all colleges in the district, while the same averages were lower than the average success rate of the general student population at Miramar.

Figure 3.3. Miramar College Success Rates by Ethnicity

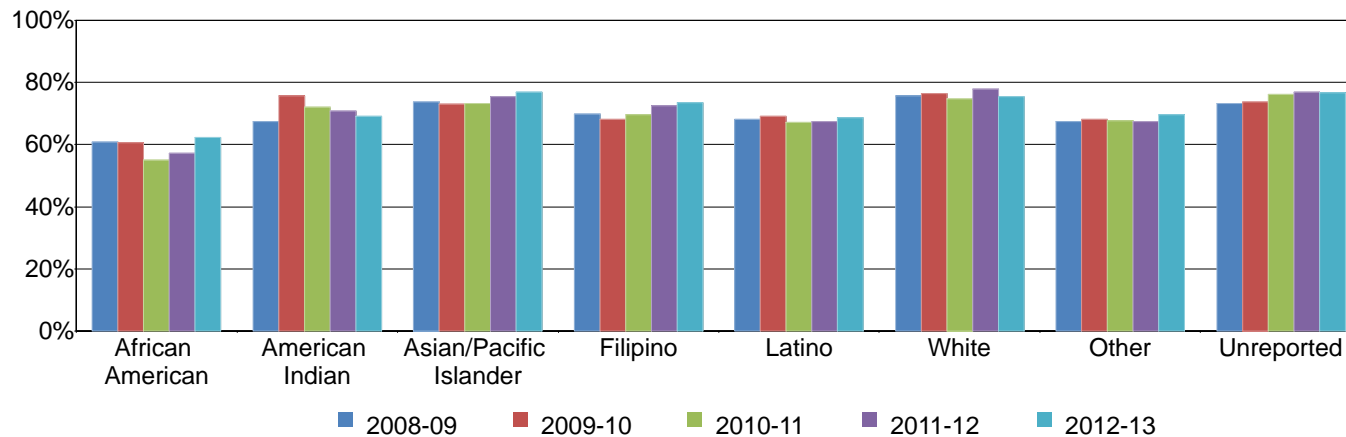


Table 3.3. Miramar College Success Rates by Ethnicity

	2008-09	2009-10	2010-11	2011-12	2012-13	% Difference 08/09 - 12/13	College Average 08/09 - 12/13	All Colleges Average 08/09 - 12/13
African American	61%	61%	55%	57%	62%	1%	59%	56%
American Indian	67%	76%	72%	71%	69%	2%	71%	66%
Asian/Pacific Islander	74%	73%	73%	75%	77%	3%	74%	73%
Filipino	70%	68%	69%	72%	73%	3%	71%	70%
Latino	68%	69%	67%	67%	68%	0%	68%	63%
White	76%	76%	75%	78%	75%	-1%	76%	73%
Other	67%	68%	67%	67%	70%	3%	68%	67%
Unreported	73%	74%	76%	77%	76%	3%	75%	70%
<b>Average</b>	<b>72%</b>	<b>72%</b>	<b>71%</b>	<b>73%</b>	<b>73%</b>	<b>1%</b>	<b>72%</b>	<b>68%</b>

Source: SDCCD Information System

# Miramar College Fact Book 2013

**Success Rates by Age:** With the exception of students who were under age 18, a general trend between 2008/09 and 2012/13 showed as age increased so did the average success rates. Students under age 18 had the highest success rate on average (84%). The average success rates of most age groups were higher than the average success rates of both the general student populations at Miramar College (72%) and all colleges in the district (68%).

Figure 3.4. Miramar College Success Rates by Age

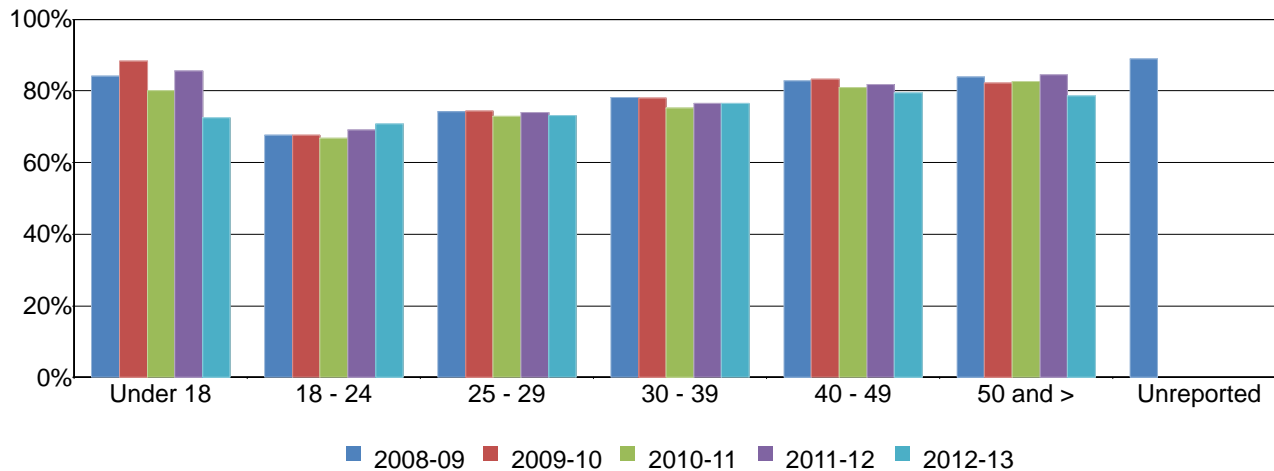


Table 3.4. Miramar College Success Rates by Age

	2008-09	2009-10	2010-11	2011-12	2012-13	% Difference 08/09 - 12/13	College Average 08/09 - 12/13	All Colleges Average 08/09 - 12/13
Under 18	84%	88%	80%	86%	73%	-11%	84%	84%
18 - 24	68%	68%	67%	69%	71%	3%	68%	65%
25 - 29	74%	74%	73%	74%	73%	-1%	74%	70%
30 - 39	78%	78%	75%	76%	76%	-2%	77%	72%
40 - 49	83%	83%	81%	82%	80%	-3%	82%	73%
50 and >	84%	82%	83%	84%	79%	-5%	82%	74%
Unreported	89%	---	---	---	---	---	---	74%
<b>Average</b>	<b>72%</b>	<b>72%</b>	<b>71%</b>	<b>73%</b>	<b>73%</b>	<b>1%</b>	<b>72%</b>	<b>68%</b>

Source: SDCCD Information System

# Miramar College Fact Book 2013

**Overall Retention Rates:** The annual retention rates of Miramar College showed a 2% increase between 2008/09 and 2012/13, with an average of 87%. This retention rate average was higher compared to the retention rate average of all colleges in the district (85%). The Miramar College annual retention rates were higher, on average, compared to the annual retention rates of all colleges in the district between 2008/09 and 2012/13.

Figure 3.5. Miramar College Overall Retention Rates

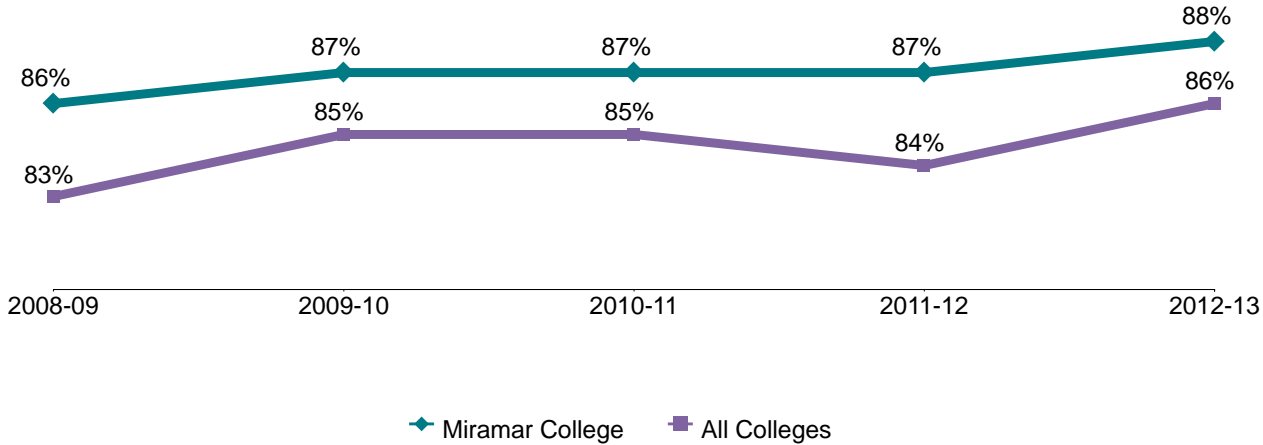


Table 3.5. Miramar College Overall Retention Rates

	2008-09	2009-10	2010-11	2011-12	2012-13	% Difference 08/09 - 12/13	College Average 08/09 - 12/13	All Colleges Average 08/09 - 12/13
<b>Average</b>	86%	87%	87%	87%	88%	2%	87%	85%

Source: SDCCD Information System

# Miramar College Fact Book 2013

**Retention Rates by Gender:** On average, male student retention rates (88%) were slightly higher than their female student counterpart (86%) between 2008/09 and 2012/13. The average retention rates of both male and female students at Miramar College were higher than the average retention rates of the male and female student populations of all colleges in the district (85% each). Both male and female students at Miramar College had average retention rates comparable to the average retention rate of the general student population at Miramar (87%). Between 2008/09 and 2012/13, the average retention rates of both the male and female student populations at Miramar College were higher than the average retention rate of the general student population of all colleges in the district (85%).

Figure 3.6. Miramar College Retention Rates by Gender



Table 3.6. Miramar College Retention Rates by Gender

	2008-09	2009-10	2010-11	2011-12	2012-13	% Difference 08/09 - 12/13	College Average 08/09 - 12/13	All Colleges Average 08/09 - 12/13
Female	84%	86%	86%	86%	88%	4%	86%	85%
Male	87%	88%	88%	88%	89%	2%	88%	85%
Unreported	96%	71%	85%	92%	71%	-25%	88%	88%
<b>Average</b>	<b>86%</b>	<b>87%</b>	<b>87%</b>	<b>87%</b>	<b>88%</b>	<b>2%</b>	<b>87%</b>	<b>85%</b>

Source: SDCCD Information System

Note. Unreported cells may have fewer than 25 students in a given year.



# Miramar College Fact Book 2013

**Retention Rates by Ethnicity:** The ethnic groups with the highest retention rates, on average, were White students (88%) and Asian/Pacific Islander, American Indian, and Filipino students (87% each). The average retention rate of African American students (83%) was lower than the average retention rates of both the general student populations at Miramar College (87%) and all colleges in the district (85%). The average retention rates of Latino and students categorized as ‘Other’ ethnicities were lower than the average retention rate of the Miramar College general student population, while were comparable to or higher than the average retention rate of the general student population of all colleges in the district. The average retention rates of Asian/Pacific Islander, American Indian, Filipino and White students were comparable to or exceeded the same averages.

Figure 3.7. Miramar College Retention Rates by Ethnicity

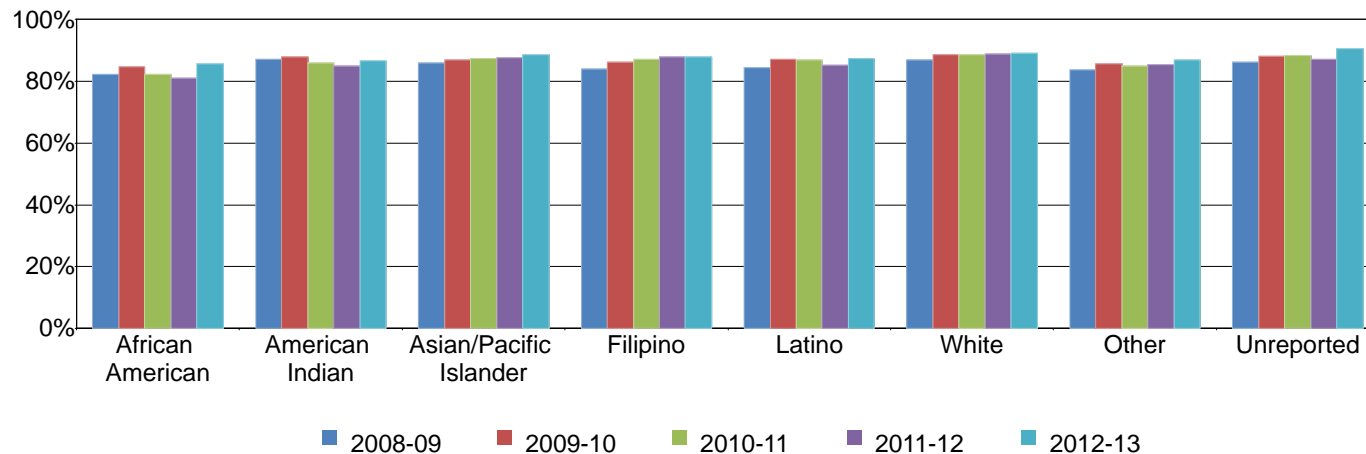


Table 3.7. Miramar College Retention Rates by Ethnicity

	2008-09	2009-10	2010-11	2011-12	2012-13	% Difference 08/09 - 12/13	College Average 08/09 - 12/13	All Colleges Average 08/09 - 12/13
African American	82%	85%	82%	81%	86%	4%	83%	81%
American Indian	87%	88%	86%	85%	87%	0%	87%	83%
Asian/Pacific Islander	86%	87%	87%	88%	89%	3%	87%	87%
Filipino	84%	86%	87%	88%	88%	4%	87%	86%
Latino	84%	87%	87%	85%	87%	3%	86%	84%
White	87%	89%	89%	89%	89%	2%	88%	86%
Other	84%	86%	85%	85%	87%	3%	85%	84%
Unreported	86%	88%	88%	87%	90%	4%	88%	84%
<b>Average</b>	<b>86%</b>	<b>87%</b>	<b>87%</b>	<b>87%</b>	<b>88%</b>	<b>2%</b>	<b>87%</b>	<b>85%</b>

Source: SDCCD Information System

# Miramar College Fact Book 2013

**Retention Rates by Age:** With the exception of students under age 18, a general trend between 2008/09 and 2012/13 showed as age increased, so did the average retention rates. The average retention rates of most of the age groups were comparable to or higher than the average retention rates of both the general student populations at Miramar College (87%) and all colleges in the district (85%). The average retention rate of students between ages 18 and 29 years old (86% each) was lower than the average retention rate of the general student population at Miramar College (87%), while was higher than the average retention rate of the general student population of all colleges in the district (85%).

Figure 3.8. Miramar College Retention Rates by Age

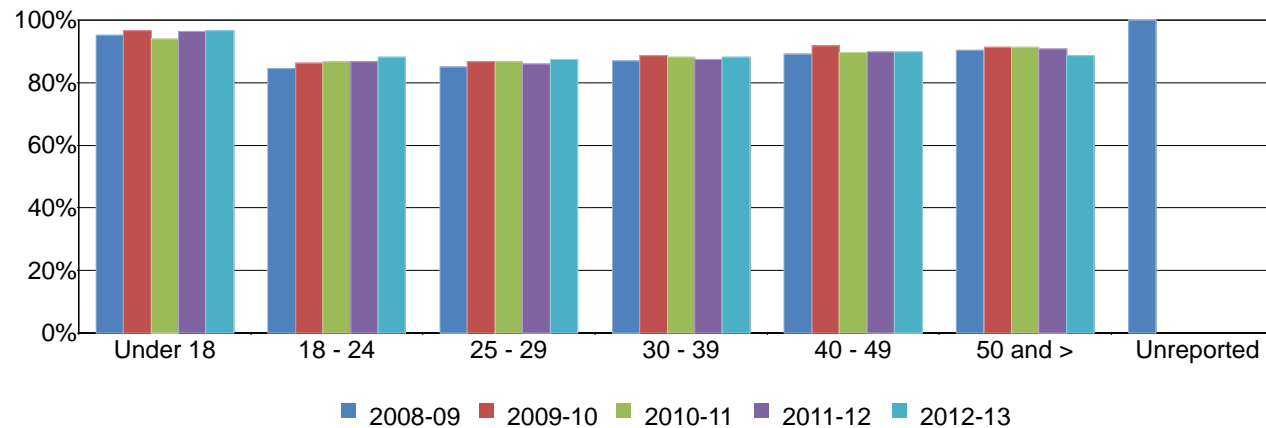


Table 3.8. Miramar College Retention Rates by Age

	2008-09	2009-10	2010-11	2011-12	2012-13	% Difference 08/09 - 12/13	College Average 08/09 - 12/13	All Colleges Average 08/09 - 12/13
Under 18	95%	96%	94%	96%	97%	2%	96%	95%
18 - 24	85%	86%	87%	87%	88%	3%	86%	85%
25 - 29	85%	87%	87%	86%	87%	2%	86%	84%
30 - 39	87%	89%	88%	87%	88%	1%	88%	84%
40 - 49	89%	92%	90%	90%	90%	1%	90%	85%
50 and >	90%	91%	91%	91%	89%	-1%	90%	85%
Unreported	100%	---	---	---	---	---	---	97%
<b>Average</b>	<b>86%</b>	<b>87%</b>	<b>87%</b>	<b>87%</b>	<b>88%</b>	<b>2%</b>	<b>87%</b>	<b>85%</b>

Source: SDCCD Information System

# Miramar College Fact Book 2013

**Overall Annual GPA:** The annual GPAs for Miramar College showed a slight decline, from 2.79 in 2008/09 to 2.69 in 2010/11, and rebounded upward to 2.74 in 2012/13, with an average of 2.75. Miramar’s collegewide annual GPA average was higher than the annual GPA average of all colleges in the district (2.65). The Miramar College annual GPAs were higher, on average, compared to the annual GPAs of all colleges in the district between 2008/09 and 2012/13.

Figure 3.9. Miramar College Overall Annual GPA

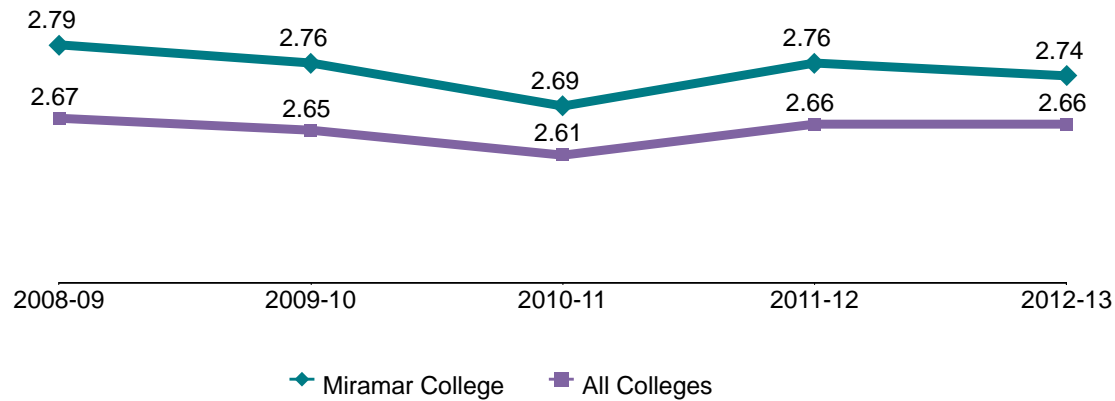


Table 3.9. Miramar College Overall Annual GPA

	2008-09	2009-10	2010-11	2011-12	2012-13	College Average 08/09 - 12/13	All Colleges Average 08/09 - 12/13
<b>Average</b>	2.79	2.76	2.69	2.76	2.74	2.75	2.65

Source: SDCCD Information System

# Miramar College Fact Book 2013

**Annual GPA by Gender:** Between 2008/09 and 2012/13, male students, on average, had slightly lower GPAs compared to their female student counterpart (2.73 & 2.77, respectively). The average annual GPA of both male and female students at Miramar College were higher compared to the average annual GPA of the male and female student populations of all colleges in the district (2.60 & 2.69, respectively). The average annual GPA of the female student population at Miramar was slightly higher than the average annual GPA of the Miramar College general student population (2.75) and the average annual GPA of the general student population of all colleges in the district (2.65). The average annual GPA of male students at Miramar College was comparable to or exceeded the same averages.

Figure 3.10. Miramar College Annual GPA by Gender

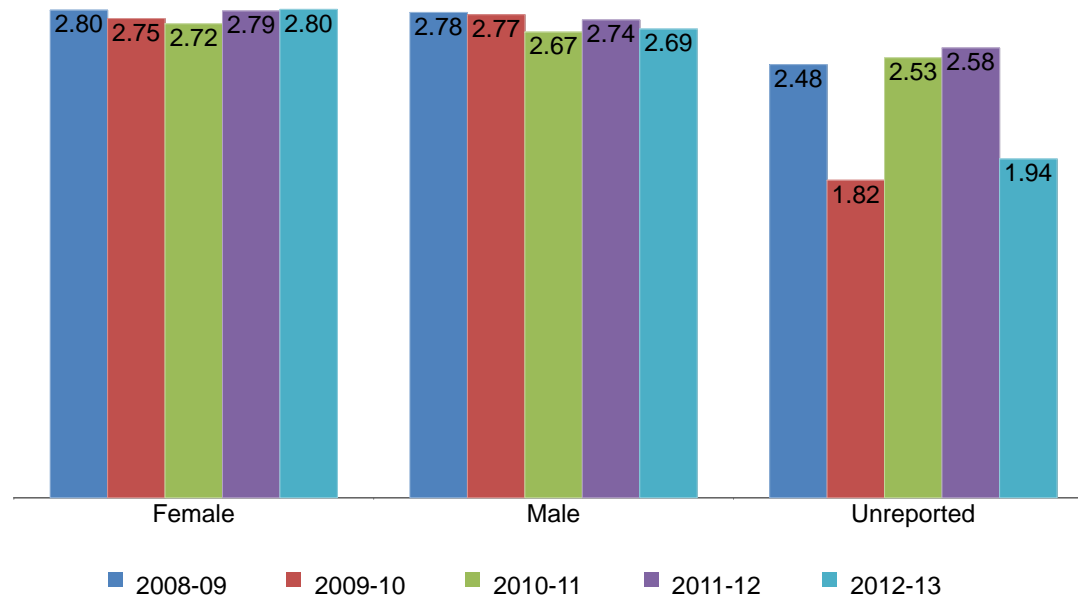


Table 3.10. Miramar College Annual GPA by Gender

	2008-09	2009-10	2010-11	2011-12	2012-13	College Average 08/09 - 12/13	All Colleges Average 08/09 - 12/13
Female	2.80	2.75	2.72	2.79	2.80	2.77	2.69
Male	2.78	2.77	2.67	2.74	2.69	2.73	2.60
Unreported	2.48	1.82	2.53	2.58	1.94	2.41	2.76
<b>Average</b>	<b>2.79</b>	<b>2.76</b>	<b>2.69</b>	<b>2.76</b>	<b>2.74</b>	<b>2.75</b>	<b>2.65</b>

Source: SDCCD Information System

Note. Unreported cells may have fewer than 25 students in a given year.

# Miramar College Fact Book 2013

**Annual GPA by Ethnicity:** Both Asian/Pacific Islander and White students had the highest GPAs (2.82 & 2.91, respectively) on average between 2008/09 and 2012/13. The average annual GPA of American Indian students (2.72) was slightly lower than the average annual GPA of Miramar College's general student population (2.75), however, was higher compared to the average annual GPA of the general student population of all colleges in the district (2.65). The average annual GPAs of African American, Filipino, Latino, and students categorized as 'Other' ethnicities were lower than the average annual GPAs of both the general student populations at Miramar College and all colleges in the district. The average annual GPAs of Asian/Pacific Islander and White students exceeded the same averages.

Figure 3.11. Miramar College Annual GPA by Ethnicity

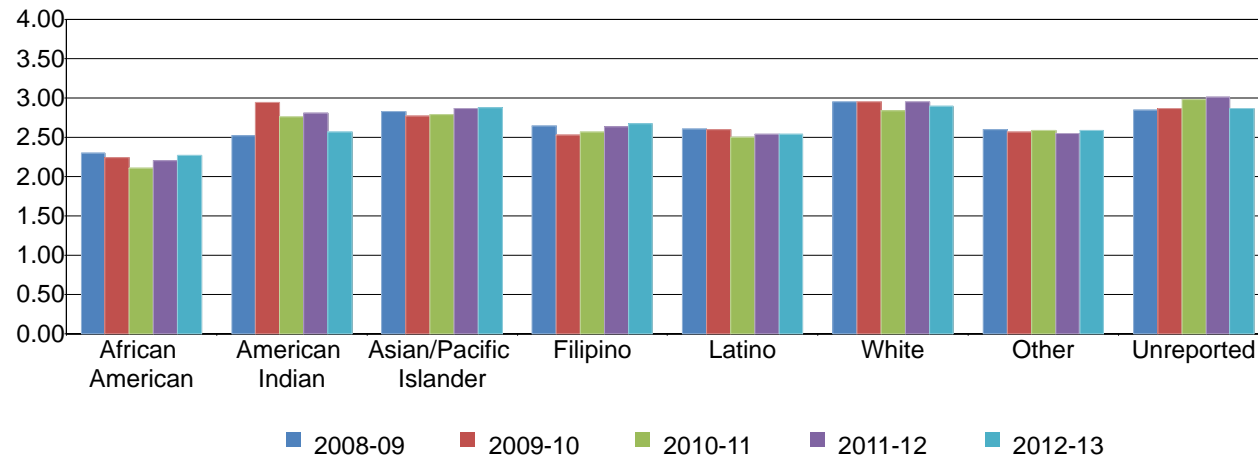


Table 3.11. Miramar College Annual GPA by Ethnicity

	2008-09	2009-10	2010-11	2011-12	2012-13	College Average 08/09 - 12/13	All Colleges Average 08/09 - 12/13
African American	2.29	2.24	2.10	2.20	2.27	2.22	2.22
American Indian	2.51	2.94	2.76	2.81	2.57	2.72	2.62
Asian/Pacific Islander	2.82	2.77	2.78	2.86	2.87	2.82	2.85
Filipino	2.64	2.53	2.57	2.63	2.67	2.61	2.64
Latino	2.60	2.59	2.49	2.54	2.54	2.55	2.40
White	2.95	2.95	2.83	2.95	2.89	2.91	2.88
Other	2.60	2.56	2.58	2.54	2.58	2.57	2.59
Unreported	2.84	2.86	2.98	3.01	2.86	2.90	2.81
<b>Average</b>	<b>2.79</b>	<b>2.76</b>	<b>2.69</b>	<b>2.76</b>	<b>2.74</b>	<b>2.75</b>	<b>2.65</b>

Source: SDCCD Information System

# Miramar College Fact Book 2013

**Annual GPA by Age:** With the exception of students under age 18, a general trend between 2008/09 and 2012/13 showed as age increased, so did the average GPAs. The average annual GPA of students who were ages 18-24 years old (2.55) was lower than the average annual GPAs of both the general student populations at Miramar College and all colleges in the district (2.75 & 2.65, respectively). The average annual GPAs of all other age groups exceeded the same averages.

Figure 3.12. Miramar College Annual GPA by Age

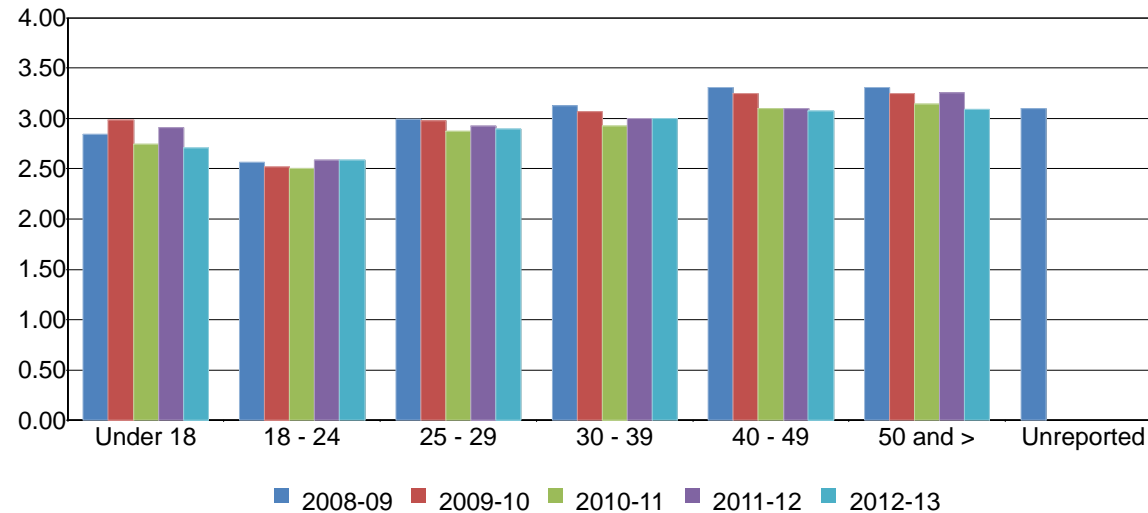


Table 3.12. Miramar College Annual GPA by Age

	2008-09	2009-10	2010-11	2011-12	2012-13	College Average 08/09 - 12/13	All Colleges Average 08/09 - 12/13
Under 18	2.84	2.98	2.74	2.91	2.71	2.86	3.03
18 - 24	2.57	2.52	2.50	2.58	2.58	2.55	2.47
25 - 29	3.00	2.98	2.87	2.92	2.89	2.93	2.84
30 - 39	3.13	3.07	2.92	3.00	3.00	3.02	2.93
40 - 49	3.30	3.25	3.10	3.10	3.08	3.16	2.99
50 and >	3.30	3.25	3.14	3.26	3.09	3.21	3.07
Unreported	3.10	---	---	---	---	---	3.09
<b>Average</b>	<b>2.79</b>	<b>2.76</b>	<b>2.69</b>	<b>2.76</b>	<b>2.74</b>	<b>2.75</b>	<b>2.65</b>

Source: SDCCD Information System

# Miramar College Fact Book 2013

**Annual Awards Conferred:** On average, 58% of the total awards conferred at Miramar College were associate degrees. The number of certificates requiring 30 to 59 units showed the greatest increase of 63%, from 152 in 2008/09 to 247 in 2012/13. The number of associate degrees awarded increased 9%, from 546 in 2008/09 to 596 in 2012/13. The number of associate degrees awarded at Miramar College, on average, was 7% less than the number of associate degrees conferred within all colleges in the district.

Figure 3.13. Miramar College Overall Annual Awards Conferred

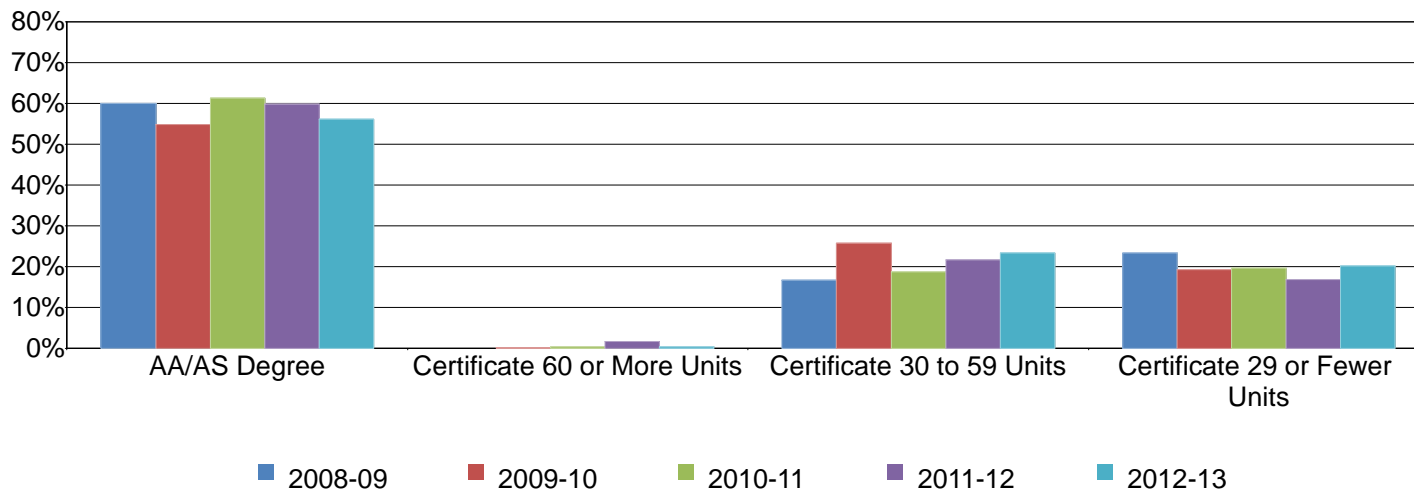


Table 3.13. Miramar College Overall Annual Awards Conferred

	2008-09		2009-10		2010-11		2011-12		2012-13		% Change 08/09-12/13	College Average 08/09-12/13	All Colleges Average 08/09-12/13
AA/AS Degree	546	60%	579	55%	574	61%	597	60%	596	56%	9%	58%	65%
Certificate 60 or More Units	0	0%	2	0%	4	0%	16	2%	4	0%	---	1%	0%
Certificate 30 to 59 Units	152	17%	272	26%	176	19%	216	22%	247	23%	63%	21%	18%
Certificate 29 or Fewer Units	212	23%	203	19%	183	20%	168	17%	214	20%	1%	20%	16%
<b>Total</b>	<b>910</b>	<b>100%</b>	<b>1,056</b>	<b>100%</b>	<b>937</b>	<b>100%</b>	<b>997</b>	<b>100%</b>	<b>1,061</b>	<b>100%</b>	<b>17%</b>	<b>100%</b>	<b>100%</b>

Source: SDCCD Information System

# Miramar College Fact Book 2013

**Annual Awards Conferred by Gender:** Of the total awards conferred at Miramar College, both male and female (50% each) students, on average, received relatively the same amount of associate degrees between 2008/09 and 2012/13. Both male and female students displayed an increase in associate degrees awarded (2% & 18%, respectively) between 2008/09 and 2012/13. For certificates requiring 30 to 59 units, both male and female students showed an increased trend between 2008/09 and 2012/13 (82% & 39%, respectively). From 2008/09 to 2012/13, female students consistently earned a disproportionately low number of awards at Miramar College compared to the female student population of all colleges in the district. Male students exhibited the opposite pattern.

Figure 3.14.1. Miramar College Annual AA/AS Degrees by Gender

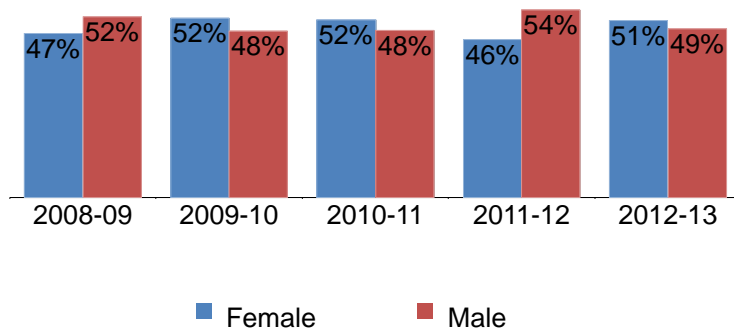


Figure 3.14.2. Miramar College Annual Certificates 60 or More Units by Gender



Figure 3.14.3. Miramar College Annual Certificates 30 to 59 Units by Gender

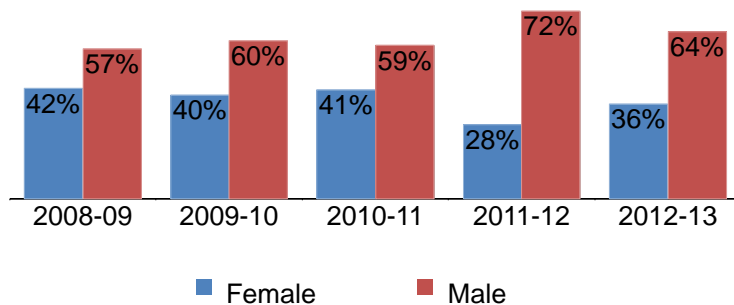
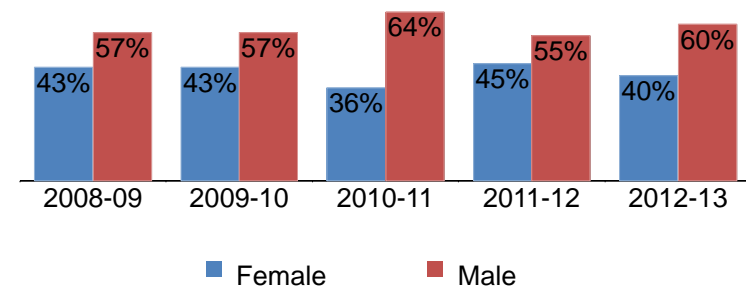


Figure 3.14.4. Miramar College Annual Certificates 29 or Fewer Units by Gender





# Miramar College Fact Book 2013

Table 3.14. Miramar College Annual Awards Conferred by Gender

		2008-09		2009-10		2010-11		2011-12		2012-13		% Change 08/09-12/13	College Average 08/09-12/13	All Colleges Average 08/09-12/13
AA/AS Degree	Female	259	47%	300	52%	296	52%	273	46%	305	51%	18%	50%	55%
	Male	286	52%	279	48%	278	48%	324	54%	291	49%	2%	50%	45%
	Unreported	1	0%	0	0%	0	0%	0	0%	0	0%	-100%	0%	0%
	<b>Total</b>	<b>546</b>	<b>100%</b>	<b>579</b>	<b>100%</b>	<b>574</b>	<b>100%</b>	<b>597</b>	<b>100%</b>	<b>596</b>	<b>100%</b>	<b>9%</b>	<b>100%</b>	<b>100%</b>
Certificate 60 or More Units	Female	0	0%	0	0%	0	0%	1	6%	0	0%	---	4%	42%
	Male	0	0%	2	100%	4	100%	15	94%	4	100%	---	96%	58%
	<b>Total</b>	<b>0</b>	<b>0%</b>	<b>2</b>	<b>100%</b>	<b>4</b>	<b>100%</b>	<b>16</b>	<b>100%</b>	<b>4</b>	<b>100%</b>	<b>---</b>	<b>100%</b>	<b>100%</b>
Certificate 30 to 59 Units	Female	64	42%	108	40%	73	41%	61	28%	89	36%	39%	37%	49%
	Male	87	57%	164	60%	103	59%	155	72%	158	64%	82%	63%	51%
	Unreported	1	1%	0	0%	0	0%	0	0%	0	0%	-100%	0%	0%
	<b>Total</b>	<b>152</b>	<b>100%</b>	<b>272</b>	<b>100%</b>	<b>176</b>	<b>100%</b>	<b>216</b>	<b>100%</b>	<b>247</b>	<b>100%</b>	<b>63%</b>	<b>100%</b>	<b>100%</b>
Certificate 29 or Fewer Units	Female	92	43%	88	43%	65	36%	75	45%	86	40%	-7%	41%	44%
	Male	120	57%	115	57%	118	64%	93	55%	128	60%	7%	59%	56%
	<b>Total</b>	<b>212</b>	<b>100%</b>	<b>203</b>	<b>100%</b>	<b>183</b>	<b>100%</b>	<b>168</b>	<b>100%</b>	<b>214</b>	<b>100%</b>	<b>1%</b>	<b>100%</b>	<b>100%</b>
<b>Grand Total</b>	<b>910</b>	<b>100%</b>	<b>1,056</b>	<b>100%</b>	<b>937</b>	<b>100%</b>	<b>997</b>	<b>100%</b>	<b>1,061</b>	<b>100%</b>	<b>17%</b>	<b>100%</b>	<b>100%</b>	

Source: SDCCD Information System

# Miramar College Fact Book 2013

**Annual Awards Conferred by Ethnicity:** With the exception of both African American and White students, the number of associate degrees conferred at Miramar College increased for all other ethnicities between 2008/09 and 2012/13. From 2008/09 to 2012/13, White students received the most awards across all of the award categories. Latino students had the second highest number of awards conferred across most of the award categories. Both African American and Latino students at Miramar College were consistently underrepresented across most awards categories when compared to the same ethnic student populations of all colleges in the district, whereas both White and Filipino students were overrepresented across most of the types of awards conferred when compared to the same ethnic student populations of all colleges in the district.

Figure 3.15.1. Miramar College Annual AA/AS Degrees by Ethnicity

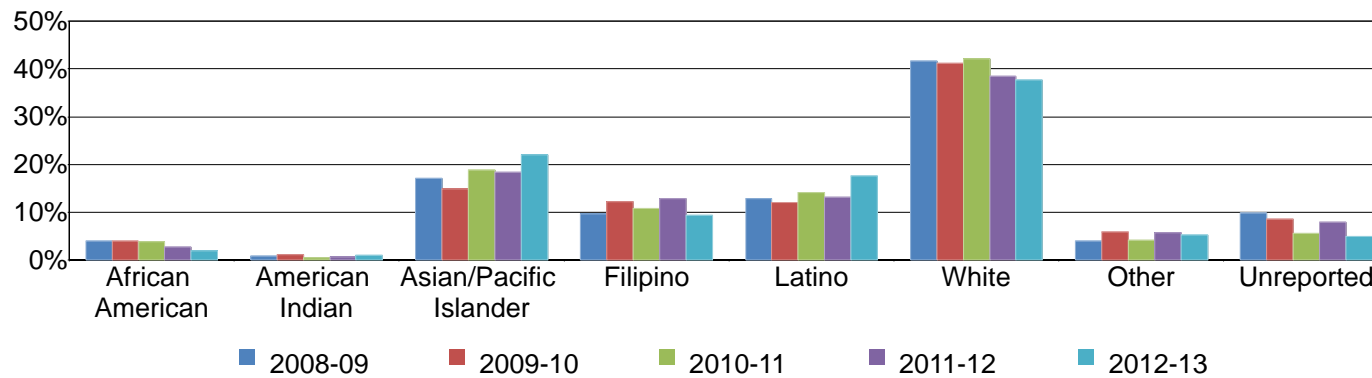
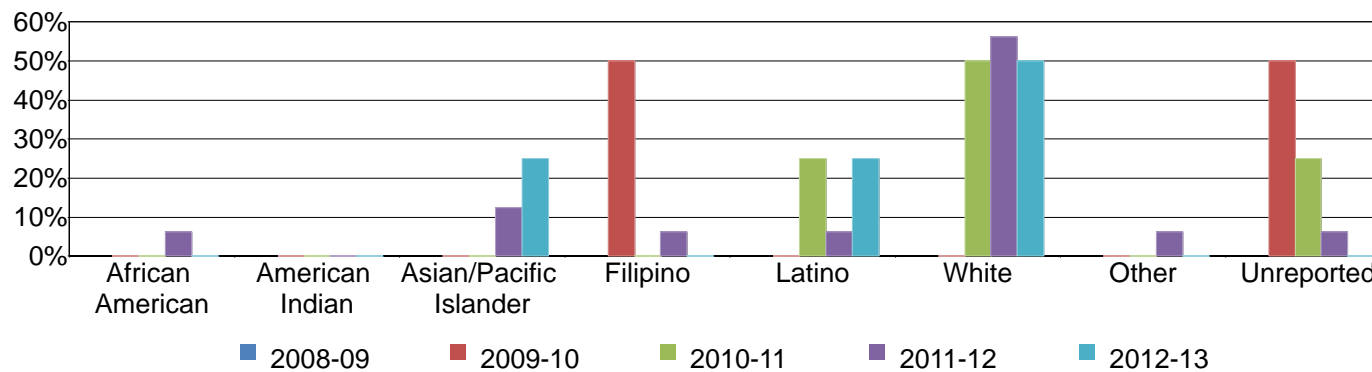


Figure 3.15.2. Miramar College Annual Certificates 60 or More Units by Ethnicity



# Miramar College Fact Book 2013

Figure 3.15.3. Miramar College Annual Certificates 30 to 59 Units by Ethnicity

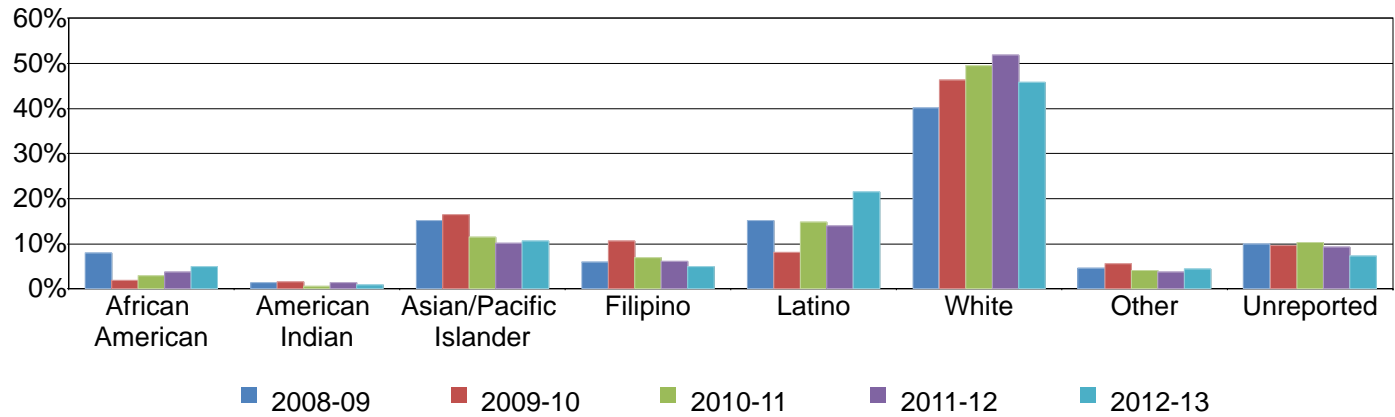
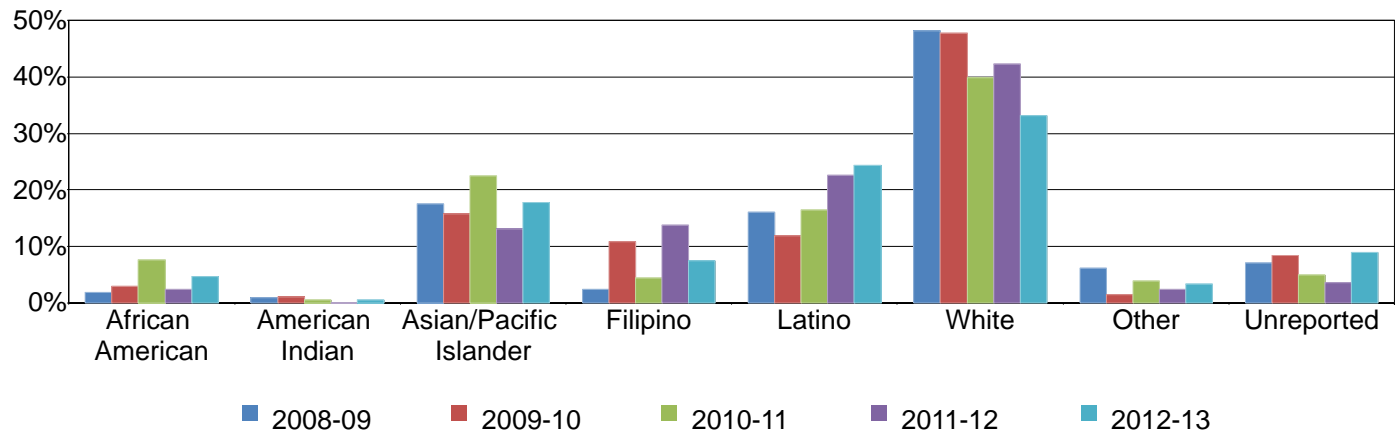


Figure 3.15.4. Miramar College Annual Certificates 29 or Fewer Units by Ethnicity



# Miramar College Fact Book 2013

Table 3.15. Miramar College Annual Awards Conferred by Ethnicity

		2008-09		2009-10		2010-11		2011-12		2012-13		% Change 08/09-12/13	College Average 08/09-12/13	All Colleges Average 08/09-12/13
AA/AS Degree	African American	22	4%	23	4%	22	4%	16	3%	12	2%	-45%	3%	7%
	American Indian	5	1%	7	1%	3	1%	4	1%	6	1%	20%	1%	1%
	Asian/Pacific Islander	93	17%	86	15%	108	19%	110	18%	131	22%	41%	18%	13%
	Filipino	53	10%	71	12%	62	11%	77	13%	56	9%	6%	11%	6%
	Latino	70	13%	70	12%	81	14%	79	13%	105	18%	50%	14%	22%
	White	227	42%	238	41%	242	42%	230	39%	225	38%	-1%	40%	38%
	Other	22	4%	34	6%	24	4%	34	6%	31	5%	41%	5%	4%
	Unreported	54	10%	50	9%	32	6%	47	8%	30	5%	-44%	7%	7%
	<b>Total</b>	<b>546</b>	<b>100%</b>	<b>579</b>	<b>100%</b>	<b>574</b>	<b>100%</b>	<b>597</b>	<b>100%</b>	<b>596</b>	<b>100%</b>	<b>9%</b>	<b>100%</b>	<b>100%</b>
Certificate 60 or More Units	African American	0	0%	0	0%	0	0%	1	6%	0	0%	---	4%	3%
	Asian/Pacific Islander	0	0%	0	0%	0	0%	2	13%	1	25%	---	12%	15%
	Filipino	0	0%	1	50%	0	0%	1	6%	0	0%	---	8%	8%
	Latino	0	0%	0	0%	1	25%	1	6%	1	25%	---	12%	15%
	White	0	0%	0	0%	2	50%	9	56%	2	50%	---	50%	42%
	Other	0	0%	0	0%	0	0%	1	6%	0	0%	---	4%	3%
	Unreported	0	0%	1	50%	1	25%	1	6%	0	0%	---	12%	12%
	<b>Total</b>	<b>0</b>	<b>0%</b>	<b>2</b>	<b>100%</b>	<b>4</b>	<b>100%</b>	<b>16</b>	<b>100%</b>	<b>4</b>	<b>100%</b>	<b>---</b>	<b>100%</b>	<b>100%</b>

Source: SDCCD Information System

# Miramar College Fact Book 2013

Table 3.15. Miramar College Annual Awards Conferred by Ethnicity (continued)

		2008-09		2009-10		2010-11		2011-12		2012-13		% Change 08/09-12/13	College Average 08/09-12/13	All Colleges Average 08/09-12/13
Certificate 30 to 59 Units	African American	12	8%	5	2%	5	3%	8	4%	12	5%	0%	4%	8%
	American Indian	2	1%	4	1%	1	1%	3	1%	2	1%	0%	1%	1%
	Asian/Pacific Islander	23	15%	45	17%	20	11%	22	10%	26	11%	13%	13%	12%
	Filipino	9	6%	29	11%	12	7%	13	6%	12	5%	33%	7%	5%
	Latino	23	15%	22	8%	26	15%	30	14%	53	21%	130%	14%	21%
	White	61	40%	126	46%	87	49%	112	52%	113	46%	85%	47%	42%
	Other	7	5%	15	6%	7	4%	8	4%	11	4%	57%	5%	4%
	Unreported	15	10%	26	10%	18	10%	20	9%	18	7%	20%	9%	8%
<b>Total</b>	<b>152</b>	<b>100%</b>	<b>272</b>	<b>100%</b>	<b>176</b>	<b>100%</b>	<b>216</b>	<b>100%</b>	<b>247</b>	<b>100%</b>	<b>63%</b>	<b>100%</b>	<b>100%</b>	
Certificate 29 or Fewer Units	African American	4	2%	6	3%	14	8%	4	2%	10	5%	150%	4%	8%
	American Indian	2	1%	2	1%	1	1%	0	0%	1	0%	-50%	1%	1%
	Asian/Pacific Islander	37	17%	32	16%	41	22%	22	13%	38	18%	3%	17%	13%
	Filipino	5	2%	22	11%	8	4%	23	14%	16	7%	220%	8%	4%
	Latino	34	16%	24	12%	30	16%	38	23%	52	24%	53%	18%	26%
	White	102	48%	97	48%	73	40%	71	42%	71	33%	-30%	42%	39%
	Other	13	6%	3	1%	7	4%	4	2%	7	3%	-46%	3%	4%
	Unreported	15	7%	17	8%	9	5%	6	4%	19	9%	27%	7%	5%
<b>Total</b>	<b>212</b>	<b>100%</b>	<b>203</b>	<b>100%</b>	<b>183</b>	<b>100%</b>	<b>168</b>	<b>100%</b>	<b>214</b>	<b>100%</b>	<b>1%</b>	<b>100%</b>	<b>100%</b>	
<b>Grand Total</b>	<b>910</b>	<b>100%</b>	<b>1,056</b>	<b>100%</b>	<b>937</b>	<b>100%</b>	<b>997</b>	<b>100%</b>	<b>1,061</b>	<b>100%</b>	<b>17%</b>	<b>100%</b>	<b>100%</b>	

Source: SDCCD Information System

# Miramar College Fact Book 2013

**Annual Awards Conferred by Age:** Approximately two-thirds of the total number of associate degrees and half of the certificates awarded between 2008/09 and 2012/13 were to students ages 18-29 years old on average. Students between ages 25 and 29 years old consistently displayed a trend of receiving approximately one-quarter of the awards within most of the award categories. Students ages 18-24 years old were overrepresented in most of the number of awards received at Miramar College when compared to the same age group of all colleges in the district. However, students ages 30 to 49 years old were underrepresented in most of the awards received at Miramar College when compared to the same age group of all colleges in the district.

Figure 3.16.1. Miramar College Annual AA/AS Degrees by Age

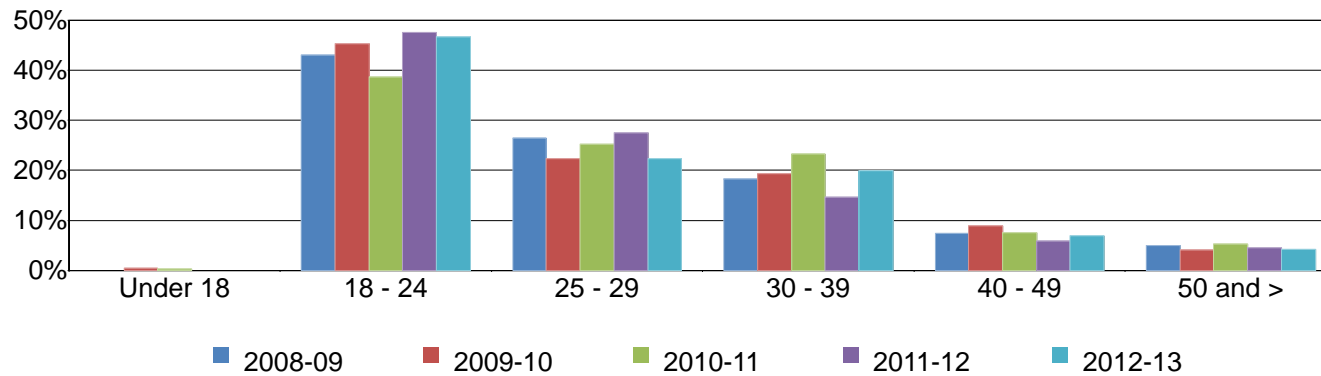
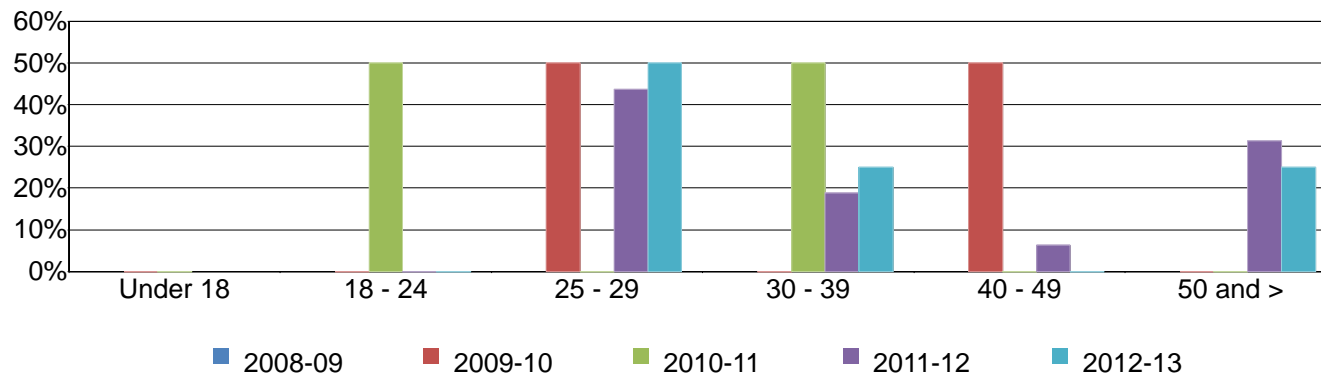


Figure 3.16.2. Miramar College Annual Certificates 60 or More Units by Age



# Miramar College Fact Book 2013

Figure 3.16.3. Miramar College Annual Certificates 30 to 59 Units by Age

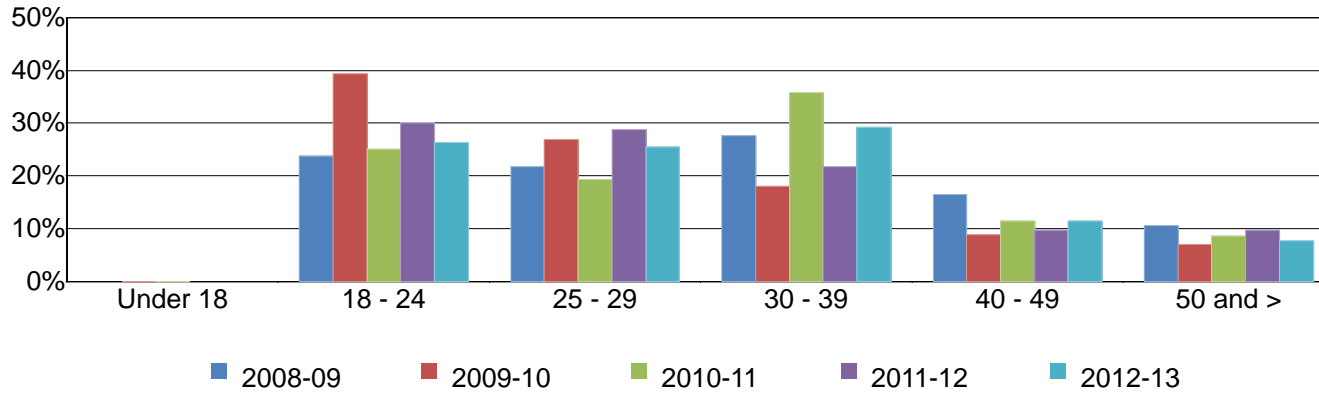
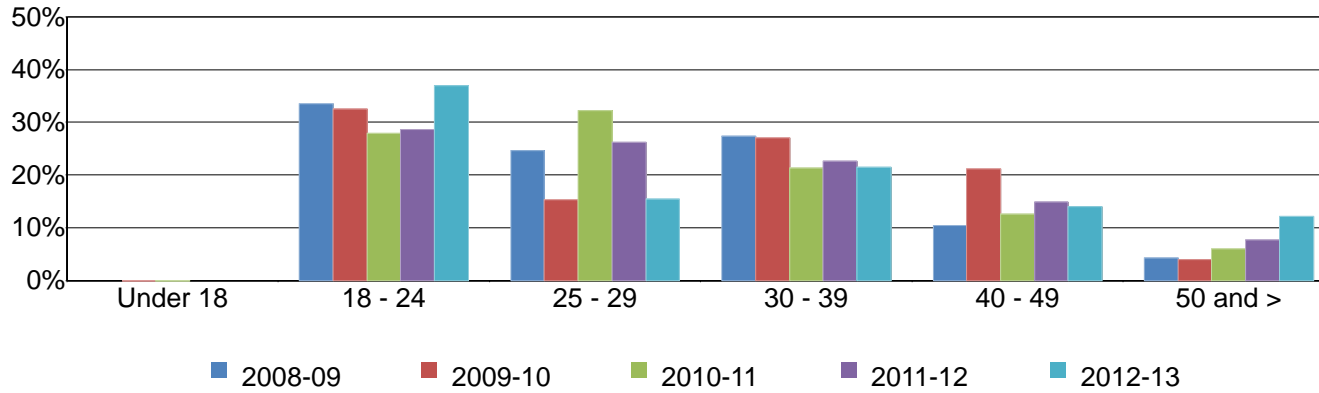


Figure 3.16.4. Miramar College Annual Certificates 29 or Fewer Units by Age



# Miramar College Fact Book 2013

Table 3.16. Miramar College Annual Awards Conferred by Age

		2008-09		2009-10		2010-11		2011-12		2012-13		% Change 08/09-12/13	College Average 08/09-12/13	All Colleges Average 08/09-12/13
AA/AS Degree	Under 18	0	0%	2	0%	1	0%	0	0%	0	0%	---	0%	0%
	18 - 24	235	43%	262	45%	222	39%	284	48%	278	47%	18%	44%	39%
	25 - 29	144	26%	129	22%	145	25%	164	27%	133	22%	-8%	25%	27%
	30 - 39	100	18%	112	19%	133	23%	87	15%	119	20%	19%	19%	21%
	40 - 49	40	7%	51	9%	43	7%	35	6%	41	7%	3%	7%	9%
	50 and >	27	5%	23	4%	30	5%	27	5%	25	4%	-7%	5%	5%
	<b>Total</b>	<b>546</b>	<b>100%</b>	<b>579</b>	<b>100%</b>	<b>574</b>	<b>100%</b>	<b>597</b>	<b>100%</b>	<b>596</b>	<b>100%</b>	<b>9%</b>	<b>100%</b>	<b>100%</b>
Certificate 60 or More Units	18 - 24	0	0%	0	0%	2	50%	0	0%	0	0%	---	8%	7%
	25 - 29	0	0%	1	50%	0	0%	7	44%	2	50%	---	38%	34%
	30 - 39	0	0%	0	0%	2	50%	3	19%	1	25%	---	23%	31%
	40 - 49	0	0%	1	50%	0	0%	1	6%	0	0%	---	8%	14%
	50 and >	0	0%	0	0%	0	0%	5	31%	1	25%	---	23%	15%
	<b>Total</b>	<b>0</b>	<b>0%</b>	<b>2</b>	<b>100%</b>	<b>4</b>	<b>100%</b>	<b>16</b>	<b>100%</b>	<b>4</b>	<b>100%</b>	<b>---</b>	<b>100%</b>	<b>100%</b>
Certificate 30 to 59 Units	18 - 24	36	24%	107	39%	44	25%	65	30%	65	26%	81%	30%	27%
	25 - 29	33	22%	73	27%	34	19%	62	29%	63	26%	91%	25%	24%
	30 - 39	42	28%	49	18%	63	36%	47	22%	72	29%	71%	26%	25%
	40 - 49	25	16%	24	9%	20	11%	21	10%	28	11%	12%	11%	14%
	50 and >	16	11%	19	7%	15	9%	21	10%	19	8%	19%	8%	11%
	<b>Total</b>	<b>152</b>	<b>100%</b>	<b>272</b>	<b>100%</b>	<b>176</b>	<b>100%</b>	<b>216</b>	<b>100%</b>	<b>247</b>	<b>100%</b>	<b>63%</b>	<b>100%</b>	<b>100%</b>
Certificate 29 or Fewer Units	18 - 24	71	33%	66	33%	51	28%	48	29%	79	37%	11%	32%	22%
	25 - 29	52	25%	31	15%	59	32%	44	26%	33	15%	-37%	22%	24%
	30 - 39	58	27%	55	27%	39	21%	38	23%	46	21%	-21%	24%	28%
	40 - 49	22	10%	43	21%	23	13%	25	15%	30	14%	36%	15%	16%
	50 and >	9	4%	8	4%	11	6%	13	8%	26	12%	189%	7%	10%
	<b>Total</b>	<b>212</b>	<b>100%</b>	<b>203</b>	<b>100%</b>	<b>183</b>	<b>100%</b>	<b>168</b>	<b>100%</b>	<b>214</b>	<b>100%</b>	<b>1%</b>	<b>100%</b>	<b>100%</b>
<b>Grand Total</b>	<b>910</b>	<b>100%</b>	<b>1,056</b>	<b>100%</b>	<b>937</b>	<b>100%</b>	<b>997</b>	<b>100%</b>	<b>1,061</b>	<b>100%</b>	<b>17%</b>	<b>100%</b>	<b>100%</b>	

Source: SDCCD Information System



# Miramar College Fact Book 2013

---

**Annual Transfer Volume:** The annual transfer volume for Miramar College increased 1%, from 574 in 2008/09 to 578 in 2012/13.

Figure 3.17. Miramar College Overall Annual Transfers

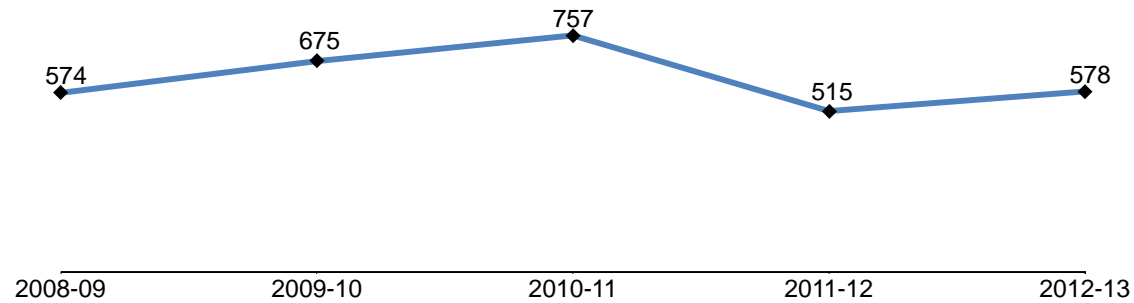


Table 3.17. Miramar College Overall Annual Transfers

	2008-09	2009-10	2010-11	2011-12	2012-13	% Change 08/09-12/13
<b>Total</b>	574	675	757	515	578	1%

Source: National Student Clearinghouse

# Miramar College Fact Book 2013

**Annual Transfer Volume by Gender:** Between 2008/09 and 2012/13, male students (51%) had a higher transfer volume, on average, compared to their female student counterpart (49%). The transfer volume for female students decreased 18%, while the transfer volume for male students increased 23% between 2008/09 and 2012/13.

Figure 3.18. Miramar College Annual Transfers by Gender

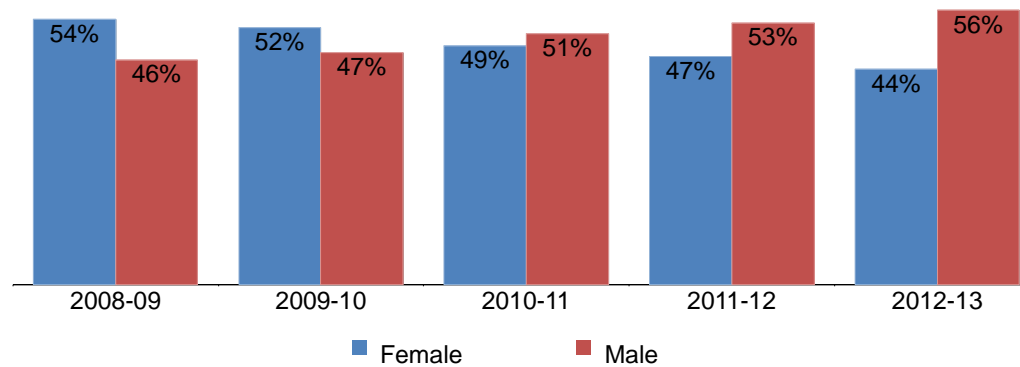


Table 3.18. Miramar College Annual Transfers by Gender

	2008-09		2009-10		2010-11		2011-12		2012-13		% Change 08/09-12/13	College Average 08/09-12/13	All Colleges Average 08/09-12/13
Female	311	54%	354	52%	369	49%	240	47%	254	44%	-18%	49%	51%
Male	263	46%	320	47%	388	51%	275	53%	324	56%	23%	51%	49%
Unreported	0	0%	1	0%	0	0%	0	0%	0	0%	---	0%	0%
<b>Total</b>	<b>574</b>	<b>100%</b>	<b>675</b>	<b>100%</b>	<b>757</b>	<b>100%</b>	<b>515</b>	<b>100%</b>	<b>578</b>	<b>100%</b>	<b>1%</b>	<b>100%</b>	<b>100%</b>

Source: National Student Clearinghouse

# Miramar College Fact Book 2013

**Annual Transfer Volume by Ethnicity:** Of all the students who transferred from Miramar College, 42% were White students on average. Ethnic groups with the second and third highest transfer volumes were Asian/Pacific Islanders students (19%) and Latino students (13%) between 2008/09 and 2012/13. Most of the ethnic groups displayed a decreased trend in transfer volume, with the exception of both Asian/Pacific Islander and Latino students. American Indian students decreased the most in transfer volume (50%) between 2008/09 and 2012/13.

Figure 3.19. Miramar College Annual Transfers by Ethnicity

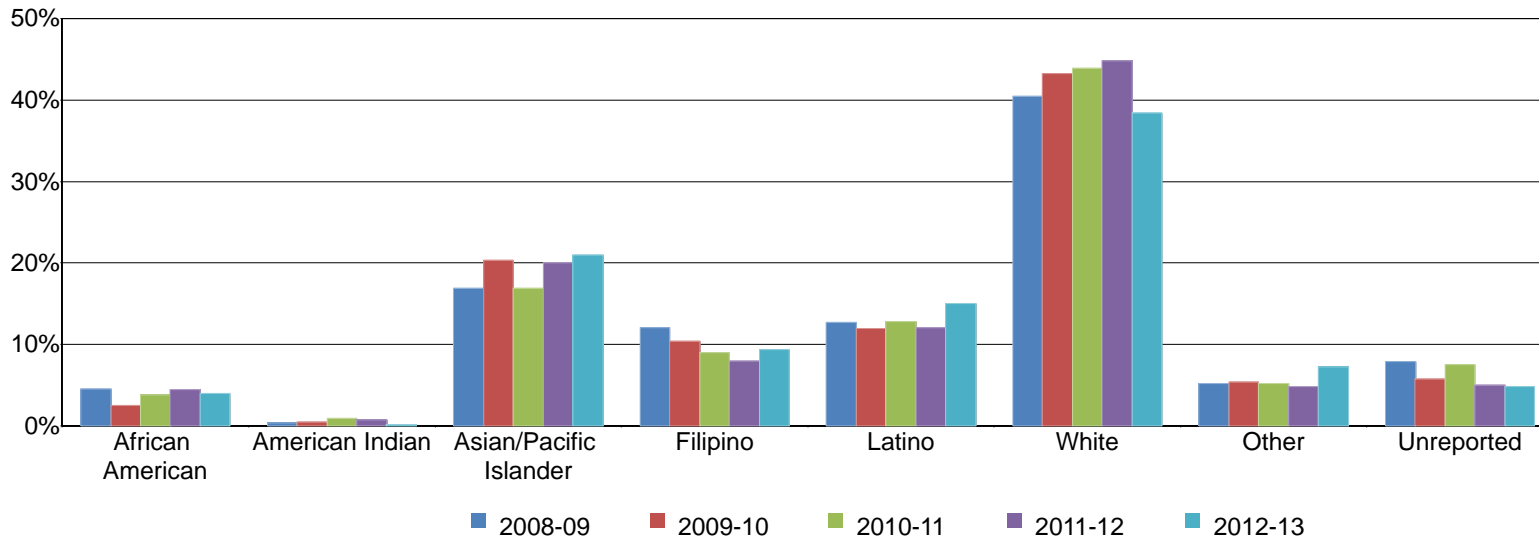


Table 3.19. Miramar College Annual Transfers by Ethnicity

	2008-09		2009-10		2010-11		2011-12		2012-13		% Change 08/09-12/13	College Average 08/09-12/13	All Colleges Average 08/09-12/13
African American	26	5%	17	3%	29	4%	23	4%	23	4%	-12%	4%	6%
American Indian	2	0%	3	0%	7	1%	4	1%	1	0%	-50%	1%	1%
Asian/Pacific Islander	97	17%	137	20%	128	17%	103	20%	121	21%	25%	19%	13%
Filipino	69	12%	70	10%	68	9%	41	8%	54	9%	-22%	10%	5%
Latino	73	13%	81	12%	97	13%	62	12%	87	15%	19%	13%	19%
White	232	40%	292	43%	332	44%	231	45%	222	38%	-4%	42%	45%
Other	30	5%	36	5%	39	5%	25	5%	42	7%	40%	6%	5%
Unreported	45	8%	39	6%	57	8%	26	5%	28	5%	-38%	6%	7%
<b>Total</b>	<b>574</b>	<b>100%</b>	<b>675</b>	<b>100%</b>	<b>757</b>	<b>100%</b>	<b>515</b>	<b>100%</b>	<b>578</b>	<b>100%</b>	<b>1%</b>	<b>100%</b>	<b>100%</b>

Source: National Student Clearinghouse

# Miramar College Fact Book 2013

**Annual Transfer Volume by Age:** The age groups with the highest transfer volume, on average, were students ages 18-24 (58%), students between ages 25 and 29 years old (25%), and students ages 30 to 39 years old (12%) between 2008/09 and 2012/13. Most of the age groups displayed an increased trend in transfer volume, with the exception of students ages 18 to 24 and ages 25 to 29 years old. Students ages 50 and older showed the largest increase (50%) in transfer volume, from 6 in 2008/09 to 9 in 2012/13.

Figure 3.20. Miramar College Annual Transfers by Age

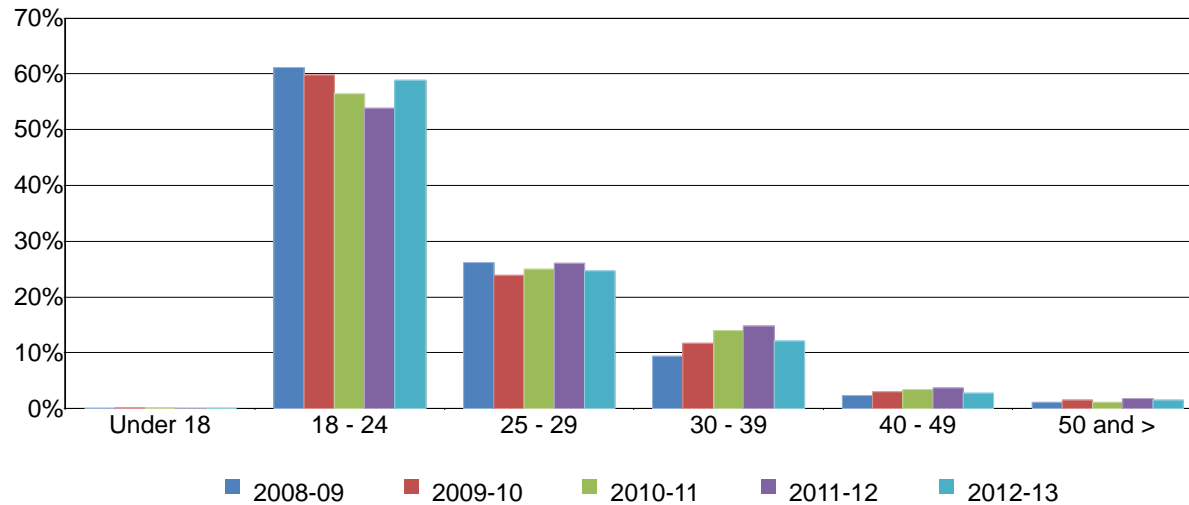


Table 3.20. Miramar College Annual Transfers by Age

	2008-09		2009-10		2010-11		2011-12		2012-13		% Change 08/09-12/13	College Average 08/09-12/13	All Colleges Average 08/09-12/13
Under 18	0	0%	1	0%	1	0%	0	0%	0	0%	---	0%	0%
18 - 24	351	61%	404	60%	427	56%	277	54%	340	59%	-3%	58%	57%
25 - 29	150	26%	161	24%	189	25%	134	26%	143	25%	-5%	25%	25%
30 - 39	54	9%	79	12%	106	14%	76	15%	70	12%	30%	12%	13%
40 - 49	13	2%	20	3%	26	3%	19	4%	16	3%	23%	3%	3%
50 and >	6	1%	10	1%	8	1%	9	2%	9	2%	50%	1%	1%
<b>Total</b>	<b>574</b>	<b>100%</b>	<b>675</b>	<b>100%</b>	<b>757</b>	<b>100%</b>	<b>515</b>	<b>100%</b>	<b>578</b>	<b>100%</b>	<b>1%</b>	<b>100%</b>	<b>100%</b>

Source: National Student Clearinghouse

# Miramar College Fact Book 2013

**Annual Transfer Volume by CSU-UC/Private (In-State)/Out-of-State:** On average, nearly half of the Miramar College transfer volume were students who transferred into the California State University system (CSU) (48%), followed by the University of California system (UC) (20%), Out-of-State institutions (21%), and then In-State private institutions (11%). Students who transferred from Miramar College to an Out-of-State institution increased in transfer volume (17%), from 109 in 2008/09 to 128 in 2012/13.

Figure 3.21. Miramar College Annual Transfers by CSU-UC/Private (In-State)/Out-of-State

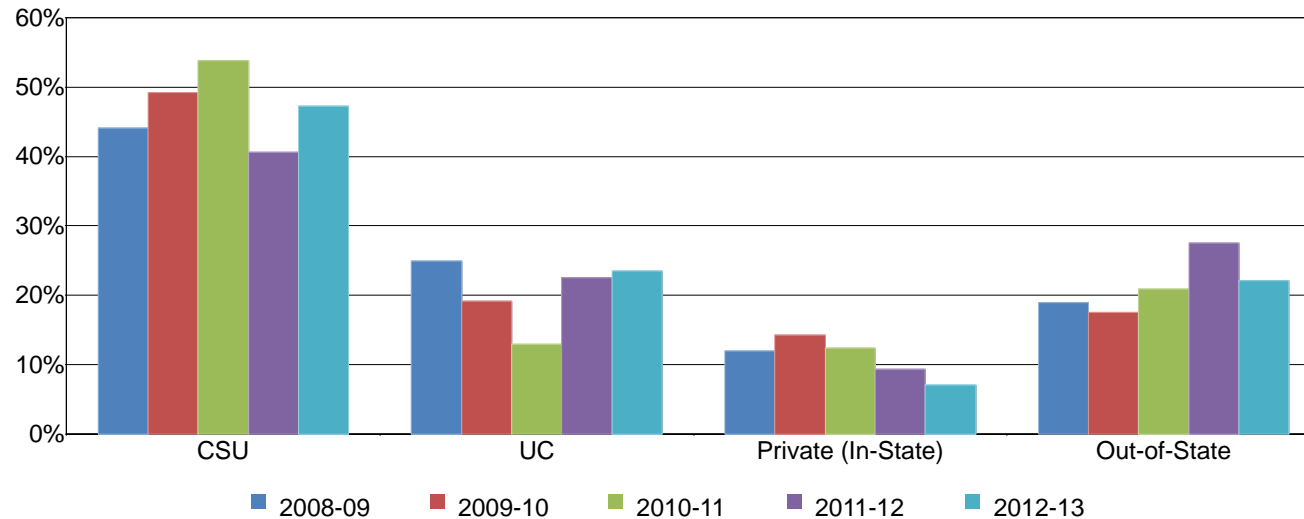


Table 3.21. Miramar College Annual Transfers by CSU-UC/Private (In-State)/Out-of-State

	2008-09		2009-10		2010-11		2011-12		2012-13		% Change 08/09-12/13	College Average 08/09-12/13	All Colleges Average 08/09-12/13
CSU	253	44%	332	49%	407	54%	209	41%	273	47%	8%	48%	46%
UC	143	25%	129	19%	98	13%	116	23%	136	24%	-5%	20%	19%
Private (In-State)	69	12%	96	14%	94	12%	48	9%	41	7%	-41%	11%	13%
Out-of-State	109	19%	118	17%	158	21%	142	28%	128	22%	17%	21%	21%
<b>Total</b>	<b>574</b>	<b>100%</b>	<b>675</b>	<b>100%</b>	<b>757</b>	<b>100%</b>	<b>515</b>	<b>100%</b>	<b>578</b>	<b>100%</b>	<b>1%</b>	<b>100%</b>	<b>100%</b>

Source: National Student Clearinghouse

Note. Out-of-State included both public and private 4-year institutions.

# Miramar College Fact Book 2013

**Annual Transfer Volume by CSU/UC:** Of the total Miramar College transfer volume (see table 3.17), 68% transferred into either the California State University (CSU) or University of California (UC) systems on average (48% & 20%, respectively). Of the total number of students who transferred to CSU or UC systems, the majority of students went to CSU (70%) and more than one-quarter went to UC (30%) on average. The CSU system showed an increased trend in the number of students who transferred from Miramar College (8%), while the UC system displayed a decreased trend in the number of students who transferred from Miramar College (5%) between 2008/09 and 2012/13.

Figure 3.22. Miramar College Annual Transfers by CSU/UC

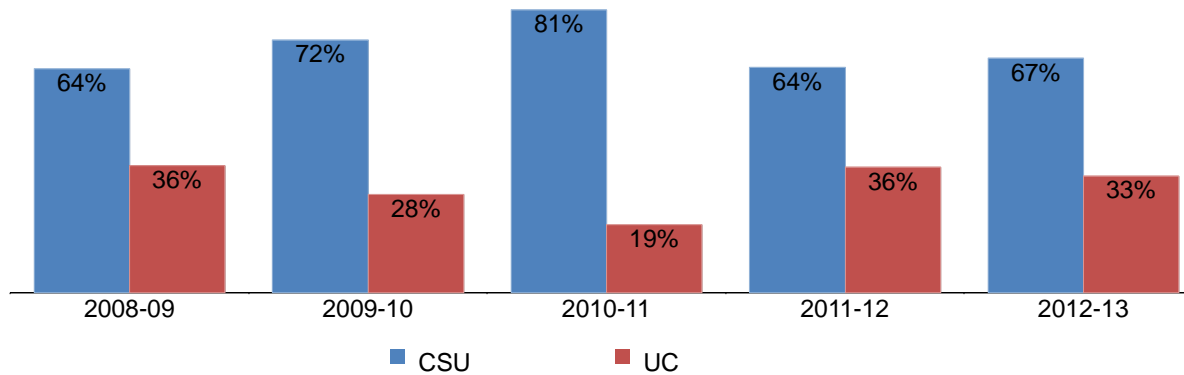


Table 3.22. Miramar College Annual Transfers by CSU/UC

	2008-09		2009-10		2010-11		2011-12		2012-13		% Change 08/09-12/13	College Average 08/09-12/13	All Colleges Average 08/09-12/13
CSU	253	64%	332	72%	407	81%	209	64%	273	67%	8%	70%	71%
UC	143	36%	129	28%	98	19%	116	36%	136	33%	-5%	30%	29%
<b>Total</b>	<b>396</b>	<b>100%</b>	<b>461</b>	<b>100%</b>	<b>505</b>	<b>100%</b>	<b>325</b>	<b>100%</b>	<b>409</b>	<b>100%</b>	<b>3%</b>	<b>100%</b>	<b>100%</b>

Source: National Student Clearinghouse

# Miramar College Fact Book 2013

**Annual Transfer Volume by Institution Type:** Of those who transferred from Miramar College, 22% transferred to a private institution and 78% transferred to a public institution on average. Private institutions displayed a decreased trend in the number of students who transferred from Miramar College (14%), while public institutions display an increased trend in the number of students who transferred from Miramar College (5%) to their respective institutions between 2008/09 and 2012/13.

Figure 3.23. Miramar College Annual Transfers by Institution Type

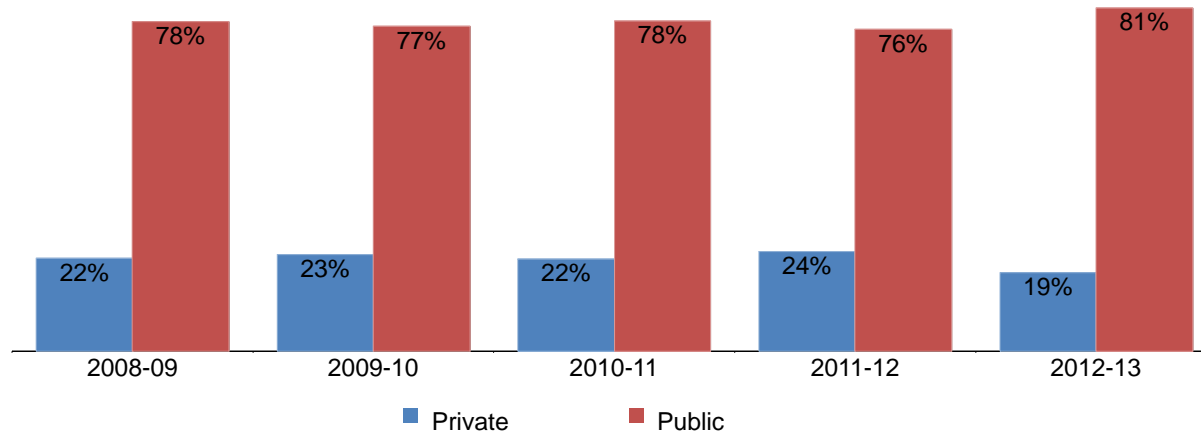


Table 3.23. Miramar College Annual Transfers by Institution Type

	2008-09		2009-10		2010-11		2011-12		2012-13		% Change 08/09-12/13	College Average 08/09-12/13	All Colleges Average 08/09-12/13
Private	126	22%	155	23%	165	22%	122	24%	108	19%	-14%	22%	25%
Public	448	78%	520	77%	592	78%	393	76%	470	81%	5%	78%	75%
<b>Total</b>	<b>574</b>	<b>100%</b>	<b>675</b>	<b>100%</b>	<b>757</b>	<b>100%</b>	<b>515</b>	<b>100%</b>	<b>578</b>	<b>100%</b>	<b>1%</b>	<b>100%</b>	<b>100%</b>

Source: National Student Clearinghouse

Note. Public and Private included both Out-of-State and In-State 4-year institutions.

## **Section IV Productivity and Efficiency**



# Miramar College Fact Book 2013

---

This section of the Fact Book contains information on productivity and efficiency measures. The following describes in detail each of the measures:

- 1) FTES. The first measure reported in this section is a measure of productivity. FTES is a calculation of full-time equivalent students enrolled as of official census and is based on the total number of student contact hours. F-Factor is included when reported annually. Starting in 2009-10 tutoring hours (course number 044) can only be claimed for Basic Skills classes at the credit colleges.
- 2) Enrollments. The second measure in this section of the report is also a measure of productivity. Enrollments are the number of seats enrolled or duplicated headcount as of a class census day. Drops, never attends, cancelled, and tutoring classes are excluded, as well as year-long summer in-service classes at Miramar. The measure counts all of the classes in which a single student is enrolled compared to unduplicated headcount which counts the student only once regardless of the number of classes he/she may be enrolled in.
- 3) Fill Rates. The third measure reported in this section is a measure of efficiency. Fill rates are the enrollment divided by the course enrollment capacity as set in the curriculum outline. Apprenticeship, in-service, cancelled, tutoring classes, and classes with a capacity of 0 or 1 are excluded.
- 4) Load. The fourth measure reported in this section is a measure of efficiency. Load is a calculation of the ratio of Weekly Student Contact Hours (WSCH) to Full-time Equivalent Faculty (WSCH/FTEF). Miramar College excludes all in-service classes. Tutoring, positive attendance, and cancelled sections are excluded for all colleges.

# Miramar College Fact Book 2013

---

**Annual Resident FTES:** Miramar College showed a 2% decrease in resident FTES, from 7,199 in 2008/09 to 7,049 in 2012/13. Resident credit FTES also showed a 2% decrease between 2008/09 and 2012/13. Miramar College resident non-credit FTES decreased by 30% between 2008/09 and 2012/13.

Figure 4.1.1 Miramar College Annual Resident FTES

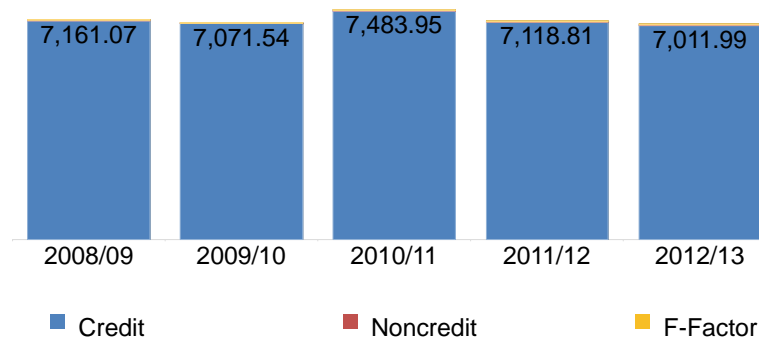


Table 4.1.1 Miramar College Annual Resident FTES

	2008/09	2009/10	2010/11	2011/12	2012/13
Credit	7,161.07	7,071.54	7,483.95	7,118.81	7,011.99
Noncredit	21.38	14.26	11.78	9.95	15.04
F-Factor	16.53	24.77	22.81	30.29	21.62
<b>Total</b>	<b>7,198.99</b>	<b>7,110.57</b>	<b>7,518.54</b>	<b>7,159.05</b>	<b>7,048.65</b>

Source: SDCCD Information System

# Miramar College Fact Book 2013

---

**Annual Nonresident FTES:** Nonresident FTES remained relatively stable between 2008/09 and 2012/13. Nonresident credit FTES displayed a similar trend. However, Miramar College nonresident non-credit FTES decreased by 30% between 2008/09 and 2012/13.

Figure 4.1.2 Miramar College Annual Nonresident FTES

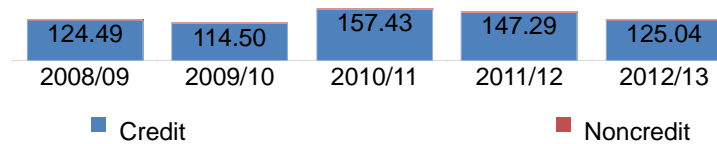


Table 4.1.2 Miramar College Annual Nonresident FTES

	2008/09	2009/10	2010/11	2011/12	2012/13
Credit	124.49	114.50	157.43	147.29	125.04
Noncredit	0.74	1.14	0.53	0.82	0.52
<b>Total</b>	<b>125.23</b>	<b>115.64</b>	<b>157.96</b>	<b>148.11</b>	<b>125.56</b>

Source: SDCCD Information System

# Miramar College Fact Book 2013

---

**Annual Overall FTES:** Miramar College showed a 2% decrease in total FTES, from 7,324 in 2008/09 to 7,174 in 2012/13. Credit FTES also showed a 2% decrease between 2008/09 and 2012/13. College non-credit FTES decreased by 30% between 2008/09 and 2012/13.

Figure 4.1.3 Miramar College Resident & Nonresident Annual Overall FTES

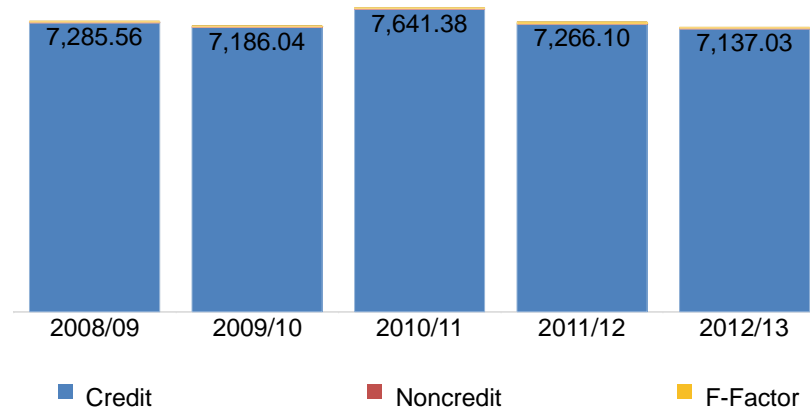


Table 4.1.3 Miramar College Resident & Nonresident Annual Overall FTES

	2008/09	2009/10	2010/11	2011/12	2012/13
Credit	7,285.56	7,186.04	7,641.38	7,266.10	7,137.03
Noncredit	22.12	15.40	12.31	10.77	15.56
F-Factor	16.53	24.77	22.81	30.29	21.62
<b>Total</b>	<b>7,324.22</b>	<b>7,226.21</b>	<b>7,676.49</b>	<b>7,307.16</b>	<b>7,174.21</b>

Source: SDCCD Information System

# Miramar College Fact Book 2013

**Enrollments:** The enrollment trend for the online mode of instruction decreased for both summer (100%) and spring (12%) terms, however, increased for the fall (3%) term between 2008/09 and 2012/13. The on campus mode of instruction enrollment decreased for the summer (87%) and fall (3%) terms, while slightly increased for the spring (1%) term between 2008/09 and 2012/13. With the exception of the summer term, the total enrollment trends for all colleges in the district were higher compared to the total enrollment trends for Miramar College across the fall and spring terms.

Figure 4.2.1 Miramar College Enrollments (Summer)

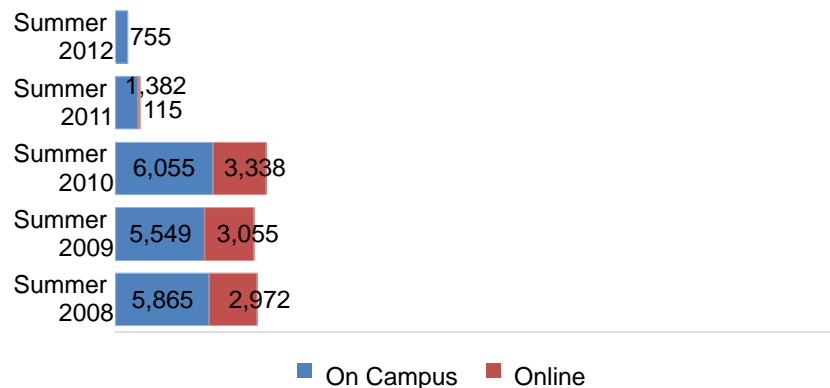


Figure 4.2.2 Miramar College Enrollments (Fall)

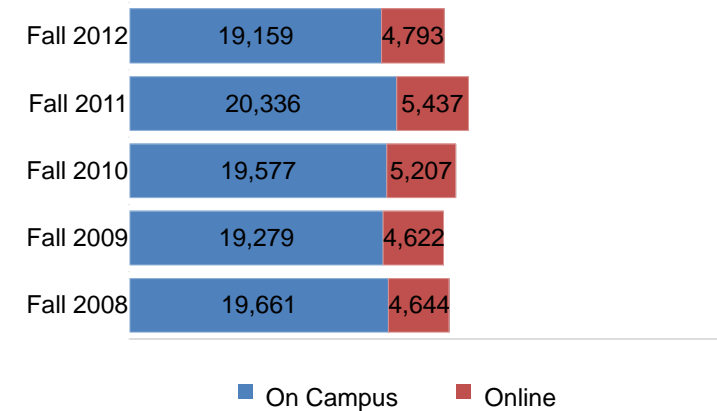
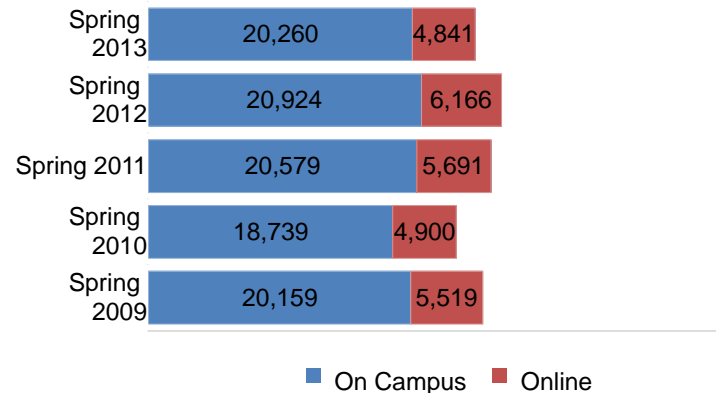


Figure 4.2.3. Miramar College Enrollments (Spring)



# Miramar College Fact Book 2013

**Fill Rates:** The overall fill rates for Miramar College were the highest for the fall and spring terms, on average, when compared to the summer term (96% & 95% vs. 91%, respectively) between 2008/09 and 2012/13. Overall fill rates for all colleges in the district followed the same pattern. On average, fill rates were the highest for the on campus mode of instruction across the summer, fall and spring terms (92%, 98% & 96%, respectively) compared to the online mode of instruction (summer 89%, fall 92%, & spring 93% terms). Miramar College had overall higher fill rates, on average, compared to the fill rates of all colleges in the district across all modes of instruction.

Figure 4.3.1. Miramar College Fill Rates (Summer)

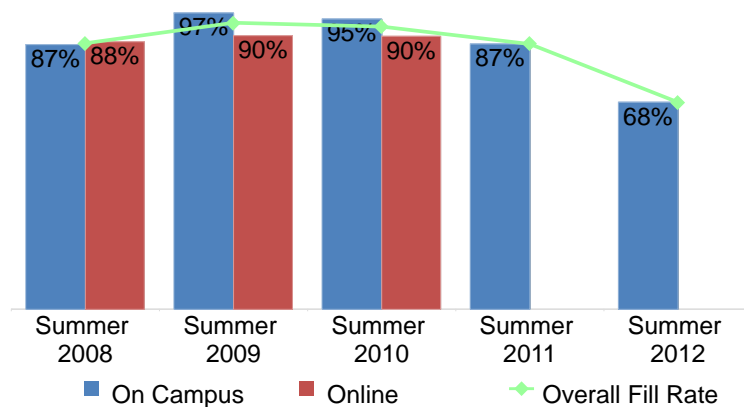


Figure 4.3.2. Miramar College Fill Rates (Fall)

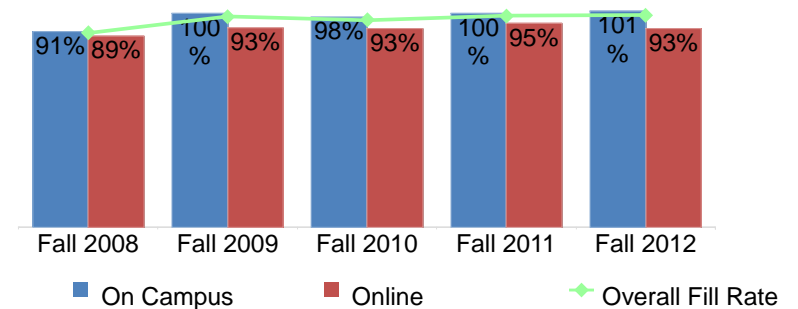
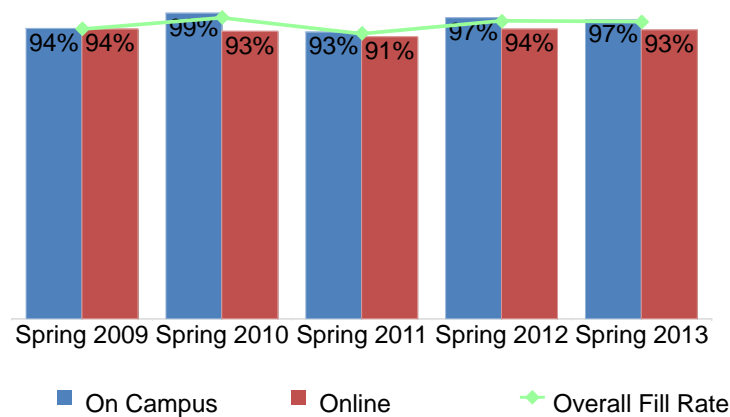


Figure 4.3.3. Miramar College Fill Rates (Spring)



# Miramar College Fact Book 2013

Table 4.2. Miramar College Enrollments and Fill Rates

	On Campus			Online			Miramar College Total			All Colleges Total		
	Enrollment	Capacity	Fill Rate	Enrollment	Capacity	Fill Rate	Enrollment	Capacity	Fill Rate	Enrollment	Capacity	Fill Rate
Summer 2008	5,865	7,760	87%	2,972	3,383	88%	8,837	11,143	87%	39,397	52,086	77%
Summer 2009	5,549	6,800	97%	3,055	3,401	90%	8,604	10,201	94%	39,262	45,761	88%
Summer 2010	6,055	7,319	95%	3,338	3,723	90%	9,393	11,042	93%	35,729	39,947	91%
Summer 2011	1,382	2,868	87%	115	0	---	1,497	2,868	87%	3,806	3,146	87%
Summer 2012	755	2,806	68%				755	2,806	68%	3,587	2,860	70%
<b>Total/5-Yr Avg</b>	<b>19,606</b>	<b>27,553</b>	<b>92%</b>	<b>9,480</b>	<b>10,507</b>	<b>89%</b>	<b>29,086</b>	<b>38,060</b>	<b>91%</b>	<b>121,781</b>	<b>143,800</b>	<b>84%</b>

	On Campus			Online			Miramar College Total			All Colleges Total		
	Enrollment	Capacity	Fill Rate	Enrollment	Capacity	Fill Rate	Enrollment	Capacity	Fill Rate	Enrollment	Capacity	Fill Rate
Fall 2008	19,661	21,289	91%	4,644	5,217	89%	24,305	26,506	91%	122,665	143,013	85%
Fall 2009	19,279	19,505	100%	4,622	4,947	93%	23,901	24,452	98%	123,429	133,381	92%
Fall 2010	19,577	20,138	98%	5,207	5,619	93%	24,784	25,757	97%	131,415	141,921	92%
Fall 2011	20,336	20,217	100%	5,437	5,725	95%	25,773	25,942	99%	131,170	138,385	93%
Fall 2012	19,159	18,922	101%	4,793	5,174	93%	23,952	24,096	99%	125,198	130,635	94%
<b>Total/5-Yr Avg</b>	<b>98,012</b>	<b>100,071</b>	<b>98%</b>	<b>24,703</b>	<b>26,682</b>	<b>92%</b>	<b>122,715</b>	<b>126,753</b>	<b>96%</b>	<b>633,877</b>	<b>687,335</b>	<b>91%</b>

	On Campus			Online			Miramar College Total			All Colleges Total		
	Enrollment	Capacity	Fill Rate	Enrollment	Capacity	Fill Rate	Enrollment	Capacity	Fill Rate	Enrollment	Capacity	Fill Rate
Spring 2009	20,159	21,421	94%	5,519	5,894	94%	25,678	27,315	94%	126,372	143,639	87%
Spring 2010	18,739	18,941	99%	4,900	5,280	93%	23,639	24,221	97%	123,528	132,520	93%
Spring 2011	20,579	22,062	93%	5,691	6,235	91%	26,270	28,297	92%	133,644	147,340	90%
Spring 2012	20,924	21,606	97%	6,166	6,582	94%	27,090	28,188	96%	130,396	141,973	90%
Spring 2013	20,260	21,119	97%	4,841	5,181	93%	25,101	26,300	96%	126,796	139,174	89%
<b>Total/5-Yr Avg</b>	<b>100,661</b>	<b>105,149</b>	<b>96%</b>	<b>27,117</b>	<b>29,172</b>	<b>93%</b>	<b>127,778</b>	<b>134,321</b>	<b>95%</b>	<b>640,736</b>	<b>704,646</b>	<b>90%</b>

Source: SDCCD Information System

Note. The Enrollment and Capacity in the above table are not part of the Fill Rate calculation.

# Miramar College Fact Book 2013

**Load:** The Load value for Fall 2011 was greater than the Load values for the other four fall terms. Similarly, the Load value for Spring 2010 was greater than the Load values for the other four spring terms. Most of the Miramar College Load values were lower compared to the all colleges in the district Load values across the fall and spring terms. The statewide benchmark for Load is 525 for a 17.5 week semester. SDCCD has set an internal benchmark of 557, which is commensurate to its 16.5 week semester.

Figure 4.4.1. Miramar College Load (Fall)



Figure 4.4.2. Miramar College Load (Spring)



Table 4.4. Miramar College Load

	Miramar College Load	All Colleges Load
Fall 2008	522	533
Fall 2009	565	575
Fall 2010	568	572
Fall 2011	585	578
Fall 2012	581	582
Spring 2009	528	544
Spring 2010	575	582
Spring 2011	534	553
Spring 2012	570	571
Spring 2013	571	561

Source: SDCCD Information System



## **Section V** **Human Resources**

# Miramar College Fact Book 2013

---

This section of the Fact Book contains information on the number and classification of employees during the Fall 2012 semester. The information is reported as follows:

- 1) Gender
- 2) Ethnicity
- 3) Employment Type

# Miramar College Fact Book 2013

**Fall 2012 Employee Breakdown:** There were a total of 740 employees working at Miramar College during Fall 2012. The largest group, over half of the Miramar employees, comprised adjunct faculty (54%), followed by non-academic hourly (19%), contract faculty (12%), and classified staff (10%). Supervisory staff and management constituted the smallest proportions of Miramar employees at 3% and 1%, respectively.

The ethnic breakdown showed that White employees comprised 59% of the total employee population, followed by Asian employees (15%), and Latino employees constituted 11% of the Miramar College workforce. Among classified staff, White employees comprised more than one-third (38%) of the employees and made up more than two-thirds of the teaching faculty positions (61% for contract and 68% for adjunct) compared to all other ethnic groups. White employees constituted more than one-third of the management (36%) positions and more than half of the supervisory (52%) positions. Asian employees comprised approximately one-fifth (18%) of the management positions and one-quarter (29%) of the supervisory positions. Latino employees comprised 18% and 5%, respectively, of the management and supervisory positions. African American employees constituted 5% of the supervisory positions.

Figure 5.1. Miramar College Fall 2012 Employees by Employment Type

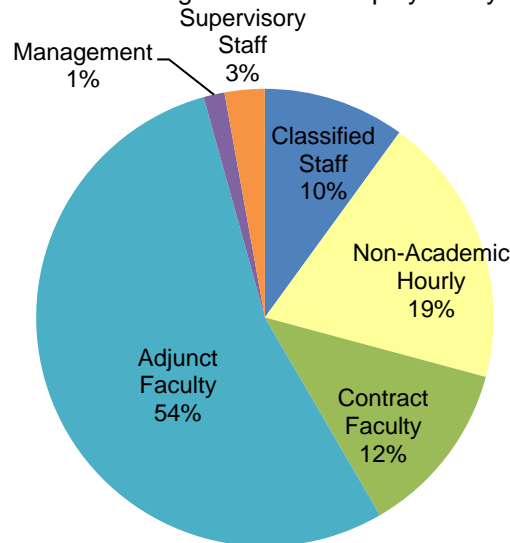
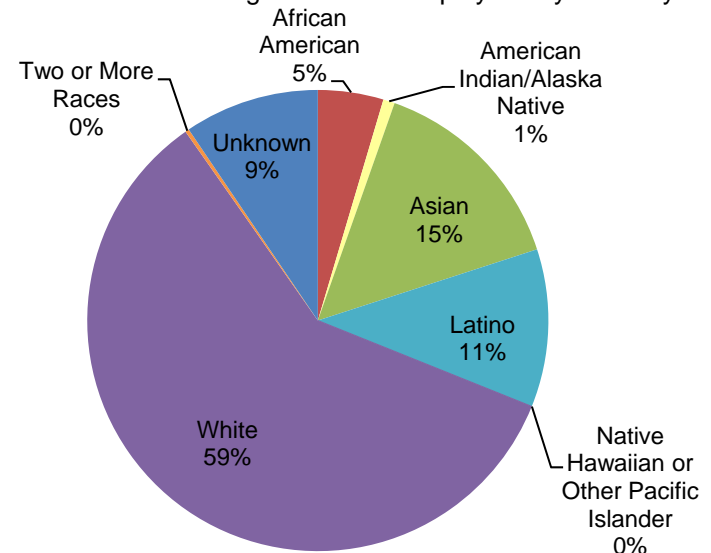


Figure 5.2. Miramar College Fall 2012 Employees by Ethnicity



# Miramar College Fact Book 2013

Table 5.1. Miramar College Fall 2012 Employees by Ethnicity

	African American		American Indian/Alaska Native		Asian		Latino		Native Hawaiian or Other Pacific Islander		White		Two or More Races		Unreported		Total
Total Employees:	34	5%	6	1%	108	15%	82	11%	0	0%	438	59%	2	0%	70	9%	740
Male:	16	4%	5	1%	49	13%	43	11%	0	0%	236	61%	0	0%	41	11%	390
Female:	18	5%	1	0%	59	17%	39	11%	0	0%	202	58%	2	1%	29	8%	350
Classified Staff :	6	8%	0	0%	26	35%	10	14%	0	0%	28	38%	0	0%	4	5%	74
Male:	0	0%	0	0%	10	40%	2	8%	0	0%	10	40%	0	0%	3	12%	25
Female:	6	12%	0	0%	16	33%	8	16%	0	0%	18	37%	0	0%	1	2%	49
Non-Academic Hourly:	9	6%	1	1%	36	25%	16	11%	0	0%	66	46%	1	1%	13	9%	142
Male:	2	4%	0	0%	14	30%	4	9%	0	0%	22	47%	0	0%	5	11%	47
Female:	7	7%	1	1%	22	23%	12	13%	0	0%	44	46%	1	1%	8	8%	95
Contract Faculty:	4	4%	1	1%	7	8%	10	11%	0	0%	56	61%	0	0%	14	15%	92
Male:	4	7%	1	2%	3	5%	5	9%	0	0%	34	61%	0	0%	9	16%	56
Female:	0	0%	0	0%	4	11%	5	14%	0	0%	22	61%	0	0%	5	14%	36
Adjunct Faculty:	13	3%	4	1%	31	8%	43	11%	0	0%	273	68%	1	0%	35	9%	400
Male:	9	4%	4	2%	18	7%	32	13%	0	0%	163	66%	0	0%	22	9%	248
Female:	4	3%	0	0%	13	9%	11	7%	0	0%	110	72%	1	1%	13	9%	152
Management:	1	9%	0	0%	2	18%	2	18%	0	0%	4	36%	0	0%	2	18%	11
Male:	1	17%	0	0%	0	0%	0	0%	0	0%	3	50%	0	0%	2	33%	6
Female:	0	0%	0	0%	2	40%	2	40%	0	0%	1	20%	0	0%	0	0%	5
Supervisory Staff:	1	5%	0	0%	6	29%	1	5%	0	0%	11	52%	0	0%	2	10%	21
Male:	0	0%	0	0%	4	50%	0	0%	0	0%	4	50%	0	0%	0	0%	8
Female:	1	8%	0	0%	2	15%	1	8%	0	0%	7	54%	0	0%	2	15%	13

Table 5.2. Miramar College Employees by Gender and Employment Status

Gender		Employment Status	
Female	47%	Full-Time/Contract	27%
Male	53%	Hourly/Adjunct	73%

Source: SDCCD Information System