

2  
0  
1  
4

# Fact Book

## Miramar College



*Prepared by:*  
Office of Institutional Research and Planning  
August 2014

# Miramar College Fact Book 2014

---

Overview & Mission .....	1	Annual Retention Rates	
<b>Section I. Headcount and Student Characteristics</b> .....	3	Overall .....	37
Section Overview .....	4	By Gender.....	38
Overall .....	5	By Ethnicity.....	39
By Gender.....	6	By Age.....	40
By Ethnicity.....	7	Annual GPA	
By Age.....	8	Overall .....	41
By Enrollment Status .....	9	By Gender.....	42
By Educational Objective .....	10	By Ethnicity .....	43
By Primary Language.....	12	By Age.....	44
By Prior Education Level .....	13	Annual Awards Conferred	
By Service Area of Residence .....	14	Overall .....	45
By First Generation .....	15	By Gender.....	46
By Residency Status.....	16	By Ethnicity.....	48
By DSPS .....	17	By Age.....	52
By EOPS.....	18	Annual Transfer	
By Day, Evening, & Online Status .....	19	Overall .....	55
By Military Status.....	20	By Gender.....	56
By Units Attempted by Units Earned .....	21	By Ethnicity.....	57
<b>Section II. Persistence Rates</b> .....	23	By Age.....	58
Section Overview .....	24	By CSU-UC/Private (In-state)/Out-of-State .....	59
Overall .....	25	By CSU/UC.....	60
By Gender.....	26	By Institution Type (Private vs. Public) .....	61
By Ethnicity.....	27	<b>Section IV. Productivity and Efficiency</b> .....	62
By Age.....	29	Section Overview .....	63
<b>Section III. Student Completion</b> .....	31	FTES (Resident, Nonresident, and Overall) .....	64
Section Overview .....	32	Enrollments (Online and On Campus) .....	67
Annual Success Rates		Fill Rates .....	68
Overall .....	33	Load .....	70
By Gender.....	34	<b>Section V. Human Resources</b> .....	71
By Ethnicity.....	35	Section Overview .....	72
By Age.....	36	Fall 2013 Employee Breakdown.....	73

# Miramar College Fact Book 2014

---

## OVERVIEW

This Fact Book is a publication of the Office of Institutional Research and Planning for the San Diego Community College District. It is designed to serve the information needs of the college community with a primary focus on student enrollment, demographics, and outcomes.

The Fact Book is a rich source of collegewide trend information that may be used for planning and decision making. The book contains the following five sections:

- 1) **Headcount and Student Characteristics.** Provides information on student demographic characteristics (e.g., age, ethnicity, and educational objective) over five years.
- 2) **Persistence Rates.** Provides information about first-time to college students who complete a fall term and enroll in the subsequent spring and fall terms. The information is also reported by demographic characteristics of interest.
- 3) **Student Completion.** Provides information on students' successful course completion rates, retention rates, GPA, awards conferred, and transfer volume. All of the information is provided in summary form, as well demographic characteristics of interest.
- 4) **Productivity and Efficiency.** Provides information on annual FTES, enrollment and fill rates, and Load (WSCH/FTEF).
- 5) **Human Resources.** Provides information on the number of employees by ethnicity, gender, and employment type.

Each section contains the following benchmarks: 1) The percentage change over the five year period being reported, 2) The collegewide average, and 3) The "All Colleges" in the district averages (excludes Continuing Education).

# Miramar College Fact Book 2014

---

## Mission

San Diego Miramar College's mission is to prepare students to succeed in a complex and dynamic world by providing quality instruction and services in an environment that supports and promotes diversity, while emphasizing innovative programs and partnerships to facilitate transfer preparation, workforce training, and career advancement.

## Vision

San Diego Miramar College will be a hub of education, diversity, and services to our community.

San Diego Miramar College, in keeping with this vision, supports and emphasizes the following guiding values:

- Access, learning and success of all students
- A collegiate college community that offers civility, mutual respect, courtesy, appreciation, and accountability
- Accomplishments of individuals, groups and the college as a whole
- Diversity of our students, staff, faculty and programs that reflect our community
- Creativity, innovation, flexibility and excellence in teaching, learning and service
- The ability to recognize and respond to opportunities
- Collaboration and partnerships
- Participatory governance and communication
- Sustainable practices in construction, curriculum and campus culture

## **Section I** **Headcount and Student Characteristics**

# Miramar College Fact Book 2014

---

This section of the Fact Book contains student headcount by various student characteristics. The headcount figures are individual counts of students, or unduplicated headcount, based on official census counts at the end of the semester. Drops, never attends, and cancelled classes are excluded, as well as year-long summer in-service classes at Miramar. The headcount information is reported over a period of five years to analyze trends and establish benchmarks. Headcount information is reported by the following segments:

- 1) Overall
- 2) Gender
- 3) Ethnicity
- 4) Age
- 5) Enrollment Status
- 6) Educational Objective
- 7) Primary Language
- 8) Prior Education Level
- 9) Service Area of Residence
- 10) First Generation
- 11) Residency Status
- 12) DSPS
- 13) EOPS
- 14) Day, Evening, and Online Status
- 15) Military Status
- 16) Units Attempted by Units Earned

# Miramar College Fact Book 2014

**Overall Headcount:** Unduplicated headcount for Miramar College showed a 95% decrease, from 6,720 in Summer 2009 to 366 in Summer 2013. Unduplicated headcount for Miramar College showed less than a 1% increase, from 12,030 in Fall 2009 to 12,082 in Fall 2013. Finally, unduplicated headcount for Miramar College showed less than a 1% increase between Spring 2010 and Spring 2014.

Figure 1.1. Miramar College Overall Headcount (Fall)

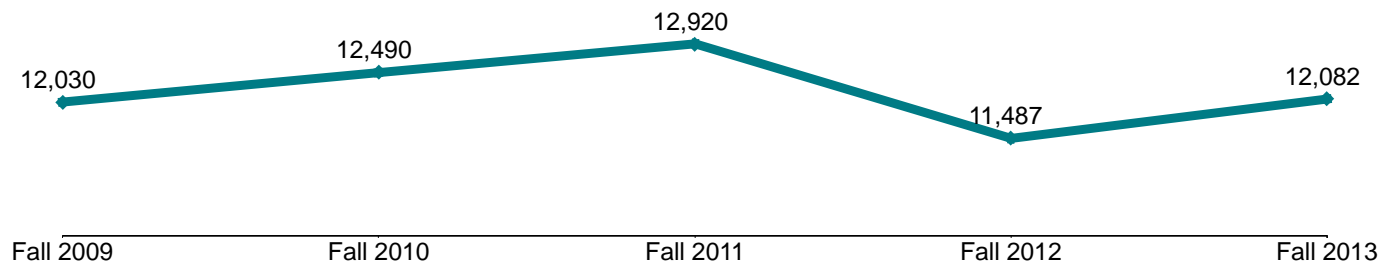


Table 1.1. Miramar College Overall Headcount (Summer, Fall, and Spring)

	Summer 09	Summer 10	Summer 11	Summer 12	Summer 13	% Change Summer 09-13
<b>Total</b>	6,720	7,530	1,314	574	366	-95%

	Fall 09	Fall 10	Fall 11	Fall 12	Fall 13	% Change Fall 09-13
<b>Total</b>	12,030	12,490	12,920	11,487	12,082	0%

	Spring 10	Spring 11	Spring 12	Spring 13	Spring 14	% Change Spring 10-14
<b>Total</b>	12,462	13,655	13,894	12,621	12,507	0%

Source: SDCCD Information System

# Miramar College Fact Book 2014

**Headcount by Gender:** On average, the male student headcount (55%) was higher than their female student counterpart (45%), which has remained fairly consistent between Fall 2009 and Fall 2013. Male student headcount increased 1% between Fall 2009 to Fall 2013, whereas female student headcount decreased 1% over the same time period.

Figure 1.2. Miramar College Headcount by Gender

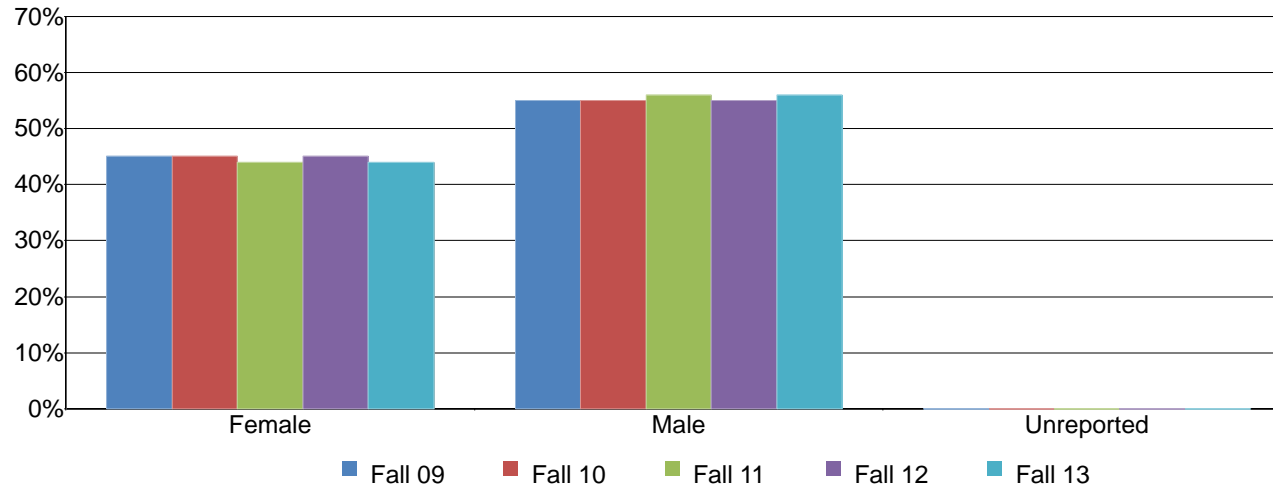


Table 1.2. Miramar College Headcount by Gender

	Fall 09		Fall 10		Fall 11		Fall 12		Fall 13		% Change Fall 09-13	College Average Fall 09-13	All Colleges Average Fall 09-13
Female	5,397	45%	5,641	45%	5,742	44%	5,182	45%	5,350	44%	-1%	45%	50%
Male	6,631	55%	6,847	55%	7,176	56%	6,304	55%	6,730	56%	1%	55%	50%
Unreported	2	0%	2	0%	2	0%	1	0%	2	0%	0%	0%	0%
<b>Total</b>	<b>12,030</b>	<b>100%</b>	<b>12,490</b>	<b>100%</b>	<b>12,920</b>	<b>100%</b>	<b>11,487</b>	<b>100%</b>	<b>12,082</b>	<b>100%</b>	<b>0%</b>	<b>100%</b>	<b>100%</b>

Source: SDCCD Information System



# Miramar College Fact Book 2014

**Headcount by Ethnicity:** The ethnic groups that comprised the largest headcounts between Fall 2009 and Fall 2013 were White students (40%), Latino students (20%), and Asian/Pacific Islander students (15%) on average. At Miramar College, the Latino student population increased 43%. In contrast, the Asian/Pacific Islander student population declined 2% between Fall 2009 and Fall 2013. Both the Latino and African American student headcounts at Miramar College (20% & 6%, respectively) were underrepresented compared to the Latino and African American student headcounts (31% & 8%, respectively) for all colleges in the District. However, Asian/Pacific Islander, Filipino, and White student headcounts at Miramar College (15%, 9%, & 40%, respectively) were overrepresented compared to the same ethnic groups for all colleges in the District (12%, 5%, & 34%, respectively).

Figure 1.3. Miramar College Headcount by Ethnicity

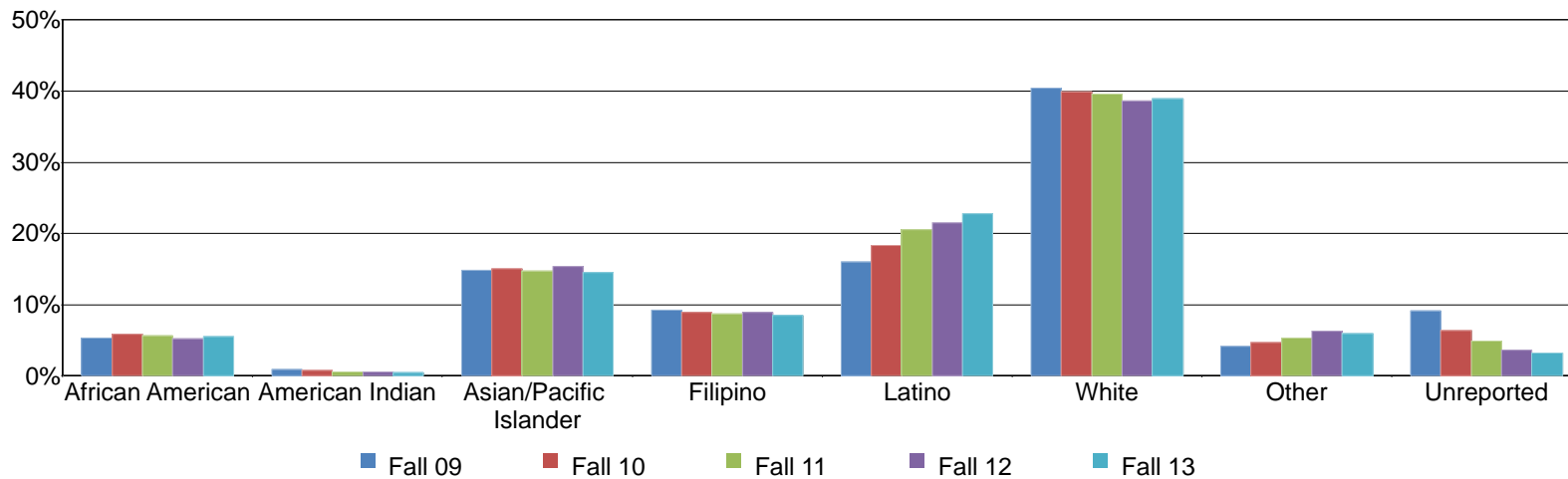


Table 1.3. Miramar College Headcount by Ethnicity

	Fall 09		Fall 10		Fall 11		Fall 12		Fall 13		% Change Fall 09-13	College Average Fall 09-13	All Colleges Average Fall 09-13
African American	645	5%	734	6%	733	6%	600	5%	672	6%	4%	6%	8%
American Indian	102	1%	93	1%	77	1%	59	1%	60	0%	-41%	1%	1%
Asian/Pacific Islander	1,786	15%	1,882	15%	1,899	15%	1,767	15%	1,758	15%	-2%	15%	12%
Filipino	1,108	9%	1,111	9%	1,122	9%	1,023	9%	1,021	8%	-8%	9%	5%
Latino	1,926	16%	2,292	18%	2,651	21%	2,471	22%	2,753	23%	43%	20%	31%
White	4,864	40%	4,988	40%	5,114	40%	4,431	39%	4,710	39%	-3%	40%	34%
Other	496	4%	588	5%	688	5%	714	6%	722	6%	46%	5%	5%
Unreported	1,103	9%	802	6%	636	5%	422	4%	386	3%	-65%	5%	5%
<b>Total</b>	<b>12,030</b>	<b>100%</b>	<b>12,490</b>	<b>100%</b>	<b>12,920</b>	<b>100%</b>	<b>11,487</b>	<b>100%</b>	<b>12,082</b>	<b>100%</b>	<b>0%</b>	<b>100%</b>	<b>100%</b>

Source: SDCCD Information System

# Miramar College Fact Book 2014

**Headcount by Age:** Students who were between ages 18 and 24, on average, constituted almost half of the Miramar student population (48%). Some of the age groups displayed an increase in headcount between Fall 2009 and Fall 2013. Specifically, students between ages 18 and 24 displayed an increased trend in headcount (6%). Student headcount for those who were between ages 18 and 24 displayed the greatest disparity at Miramar College when compared to the student headcount of the same age group for all colleges in the District (48% & 53%, respectively).

Figure 1.4. Miramar College Headcount by Age

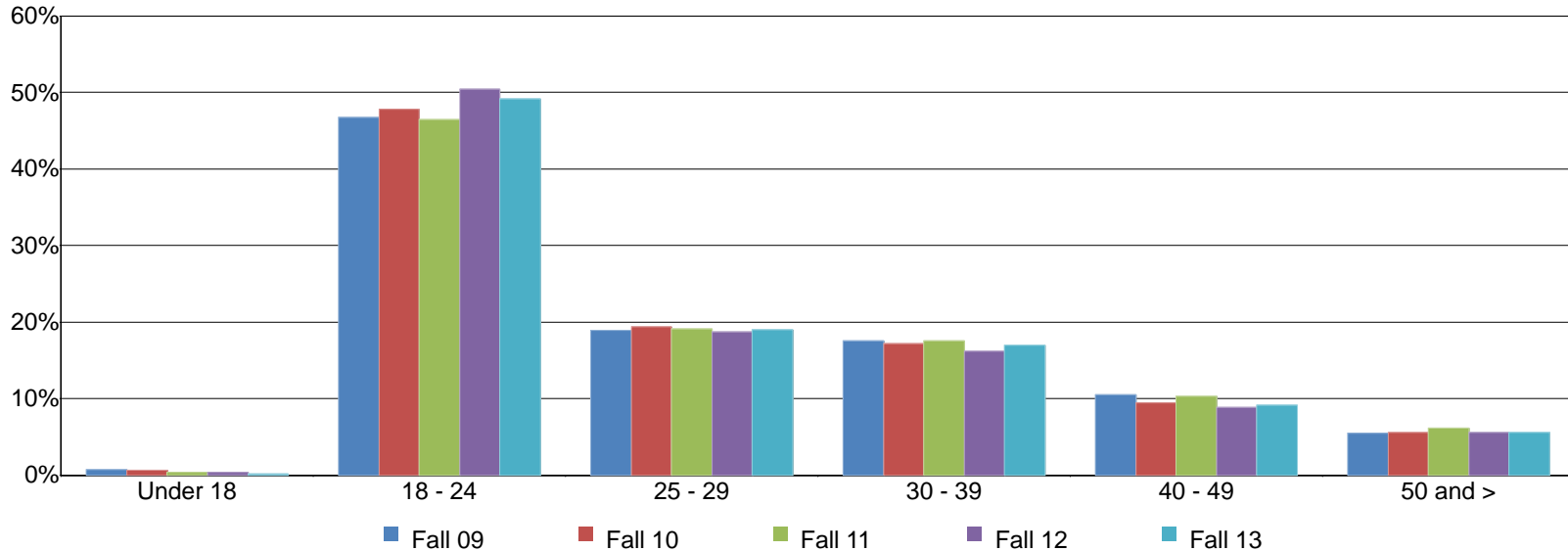


Table 1.4. Miramar College Headcount by Age

	Fall 09		Fall 10		Fall 11		Fall 12		Fall 13		% Change Fall 09-13	College Average Fall 09-13	All Colleges Average Fall 09-13
Under 18	92	1%	78	1%	51	0%	39	0%	15	0%	-84%	0%	3%
18 - 24	5,628	47%	5,966	48%	6,003	46%	5,787	50%	5,944	49%	6%	48%	53%
25 - 29	2,280	19%	2,424	19%	2,472	19%	2,148	19%	2,297	19%	1%	19%	18%
30 - 39	2,108	18%	2,147	17%	2,263	18%	1,864	16%	2,049	17%	-3%	17%	14%
40 - 49	1,263	10%	1,181	9%	1,333	10%	1,015	9%	1,104	9%	-13%	10%	7%
50 and >	659	5%	694	6%	798	6%	634	6%	673	6%	2%	6%	5%
<b>Total</b>	<b>12,030</b>	<b>100%</b>	<b>12,490</b>	<b>100%</b>	<b>12,920</b>	<b>100%</b>	<b>11,487</b>	<b>100%</b>	<b>12,082</b>	<b>100%</b>	<b>0%</b>	<b>100%</b>	<b>100%</b>

Source: SDCCD Information System

# Miramar College Fact Book 2014

**Headcount by Enrollment Status:** On average, 64% of the student population comprised continuing students. The number of returning transfer students declined 45%, from 915 in Fall 2009 to 500 in Fall 2013. However, the number of returning students who were enrolled at Miramar College increased 61%, from 913 in Fall 2009 to 1,467 in Fall 2013.

Figure 1.5. Miramar College Headcount by Enrollment Status

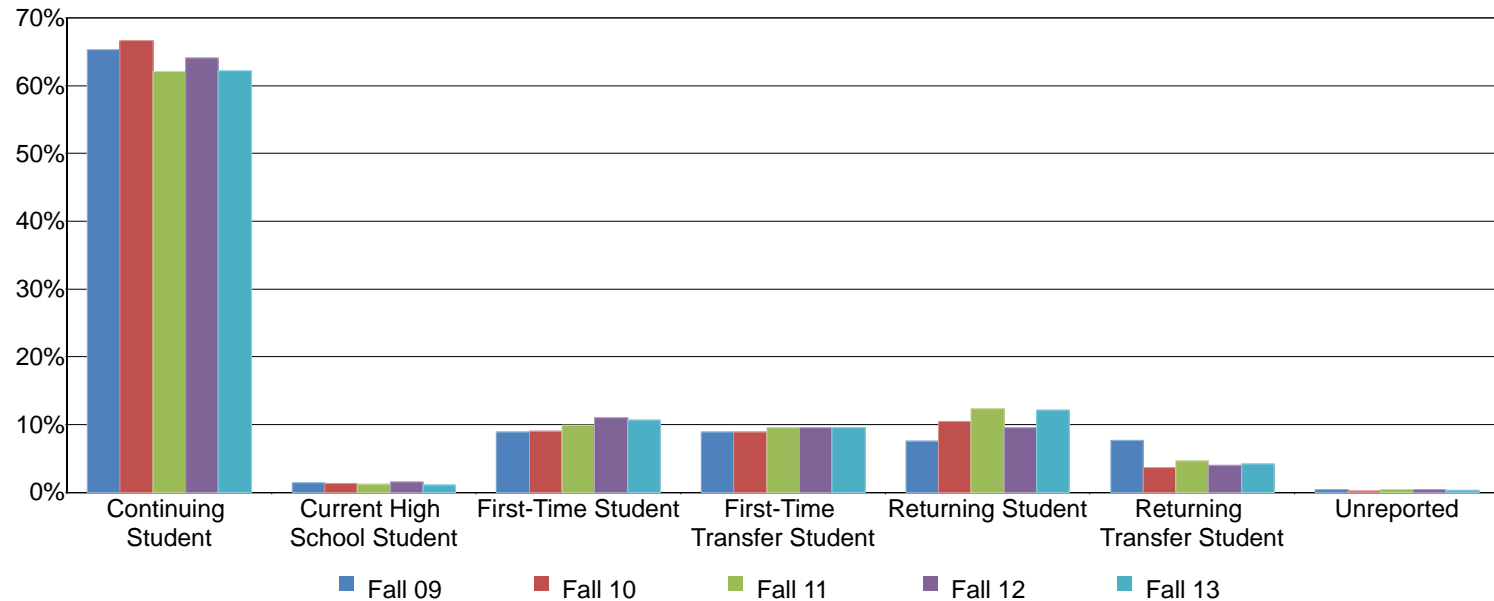


Table 1.5. Miramar College Headcount by Enrollment Status

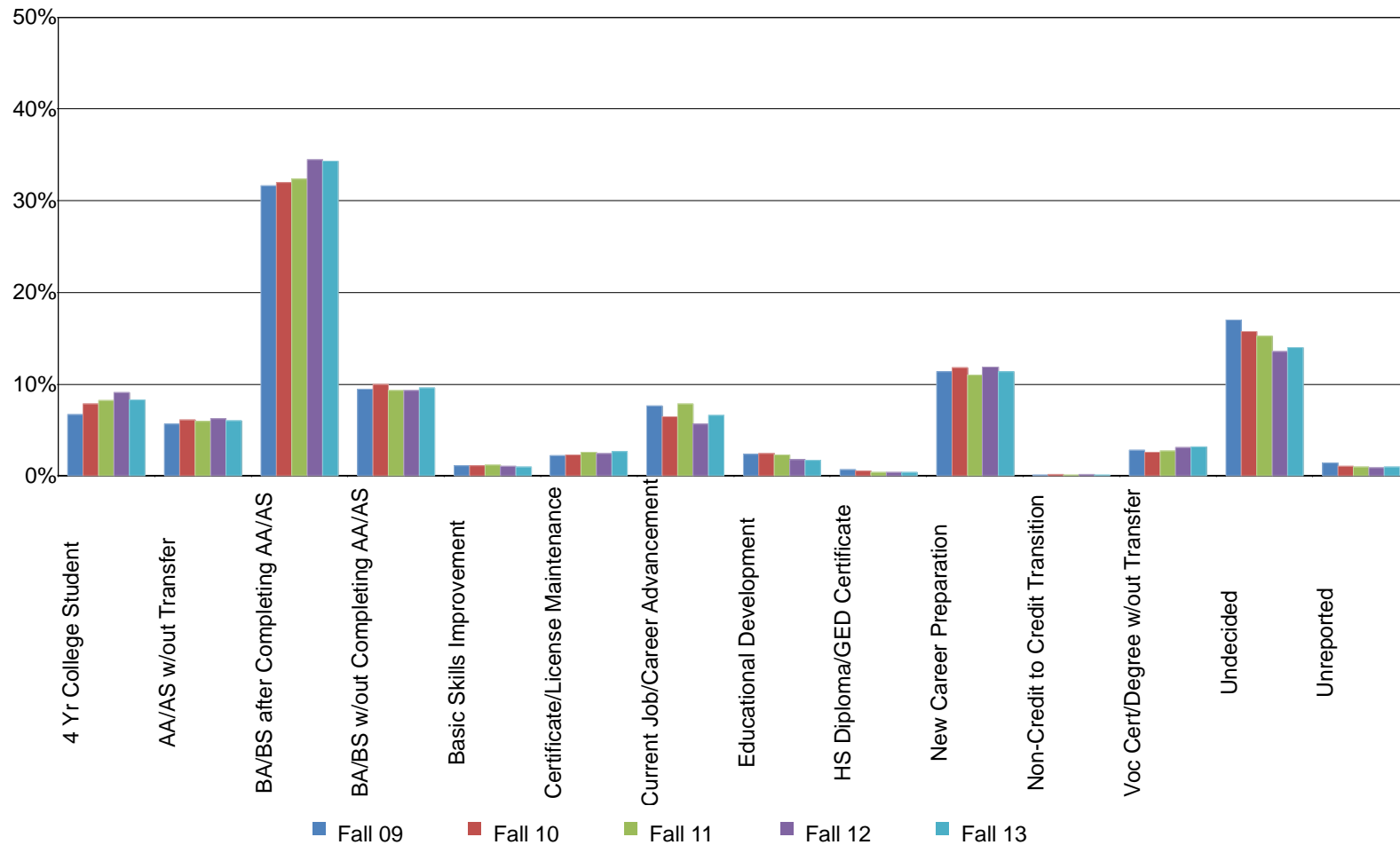
	Fall 09		Fall 10		Fall 11		Fall 12		Fall 13		% Change Fall 09-13	College Average Fall 09-13	All Colleges Average Fall 09-13
Continuing Student	7,860	65%	8,327	67%	8,029	62%	7,367	64%	7,517	62%	-4%	64%	63%
Current High School Student	164	1%	157	1%	145	1%	169	1%	123	1%	-25%	1%	4%
First-Time Student	1,067	9%	1,122	9%	1,270	10%	1,257	11%	1,287	11%	21%	10%	11%
First-Time Transfer Student	1,069	9%	1,105	9%	1,234	10%	1,103	10%	1,150	10%	8%	9%	11%
Returning Student	913	8%	1,305	10%	1,596	12%	1,092	10%	1,467	12%	61%	10%	7%
Returning Transfer Student	915	8%	450	4%	594	5%	455	4%	500	4%	-45%	5%	3%
Unreported	42	0%	24	0%	52	0%	44	0%	38	0%	-10%	0%	0%
<b>Total</b>	<b>12,030</b>	<b>100%</b>	<b>12,490</b>	<b>100%</b>	<b>12,920</b>	<b>100%</b>	<b>11,487</b>	<b>100%</b>	<b>12,082</b>	<b>100%</b>	<b>0%</b>	<b>100%</b>	<b>100%</b>

Source: SDCCD Information System

# Miramar College Fact Book 2014

**Headcount by Educational Objective:** Almost half of the Miramar student population (43%) selected transfer to obtain a BA/BS, with or without completing an AA/AS degree, as their educational objective during the five terms being reported. Between Fall 2009 and Fall 2013, the educational objectives that increased the most in selection were four year college student (25%) and certificate/license maintenance (18%). In contrast, students who selected high school diploma/GED and educational development as educational objectives decreased 44% and 29%, respectively.

Figure 1.6. Miramar College Headcount by Educational Objective



# Miramar College Fact Book 2014

Table 1.6. Miramar College Headcount by Educational Objective

	Fall 09		Fall 10		Fall 11		Fall 12		Fall 13		% Change Fall 09-13	College Average Fall 09-13	All Colleges Average Fall 09-13
4 Yr College Student	800	7%	979	8%	1,065	8%	1,047	9%	998	8%	25%	8%	10%
AA/AS w/out Transfer	682	6%	762	6%	767	6%	714	6%	724	6%	6%	6%	6%
BA/BS after Completing AA/AS	3,800	32%	3,999	32%	4,175	32%	3,961	34%	4,146	34%	9%	33%	35%
BA/BS w/out Completing AA/AS	1,140	9%	1,242	10%	1,200	9%	1,072	9%	1,164	10%	2%	10%	11%
Basic Skills Improvement	137	1%	136	1%	157	1%	121	1%	113	1%	-18%	1%	1%
Certificate/License Maintenance	268	2%	287	2%	330	3%	283	2%	317	3%	18%	2%	2%
Current Job/Career Advancement	916	8%	808	6%	1,011	8%	650	6%	797	7%	-13%	7%	4%
Educational Development	288	2%	305	2%	291	2%	204	2%	205	2%	-29%	2%	2%
HS Diploma/GED Certificate	78	1%	69	1%	47	0%	46	0%	44	0%	-44%	0%	1%
New Career Preparation	1,362	11%	1,470	12%	1,418	11%	1,365	12%	1,373	11%	1%	11%	11%
Non-Credit to Credit Transition	10	0%	17	0%	14	0%	18	0%	11	0%	10%	0%	0%
Voc Cert/Degree w/out Transfer	340	3%	321	3%	351	3%	351	3%	384	3%	13%	3%	3%
Undecided	2,040	17%	1,962	16%	1,965	15%	1,555	14%	1,691	14%	-17%	15%	15%
Unreported	169	1%	133	1%	129	1%	100	1%	115	1%	-32%	1%	1%
<b>Total</b>	<b>12,030</b>	<b>100%</b>	<b>12,490</b>	<b>100%</b>	<b>12,920</b>	<b>100%</b>	<b>11,487</b>	<b>100%</b>	<b>12,082</b>	<b>100%</b>	<b>0%</b>	<b>100%</b>	<b>100%</b>

Source: SDCCD Information System

# Miramar College Fact Book 2014

**Headcount by Primary Language:** On average, the majority of the Miramar student population (93%) spoke English as their primary language. This was the same as the student population of all colleges in the District (93%). There was a decrease for those who reported speaking English (1%), while those who spoke a language other than English increased 17%.

Figure 1.7. Miramar College Headcount by Primary Language

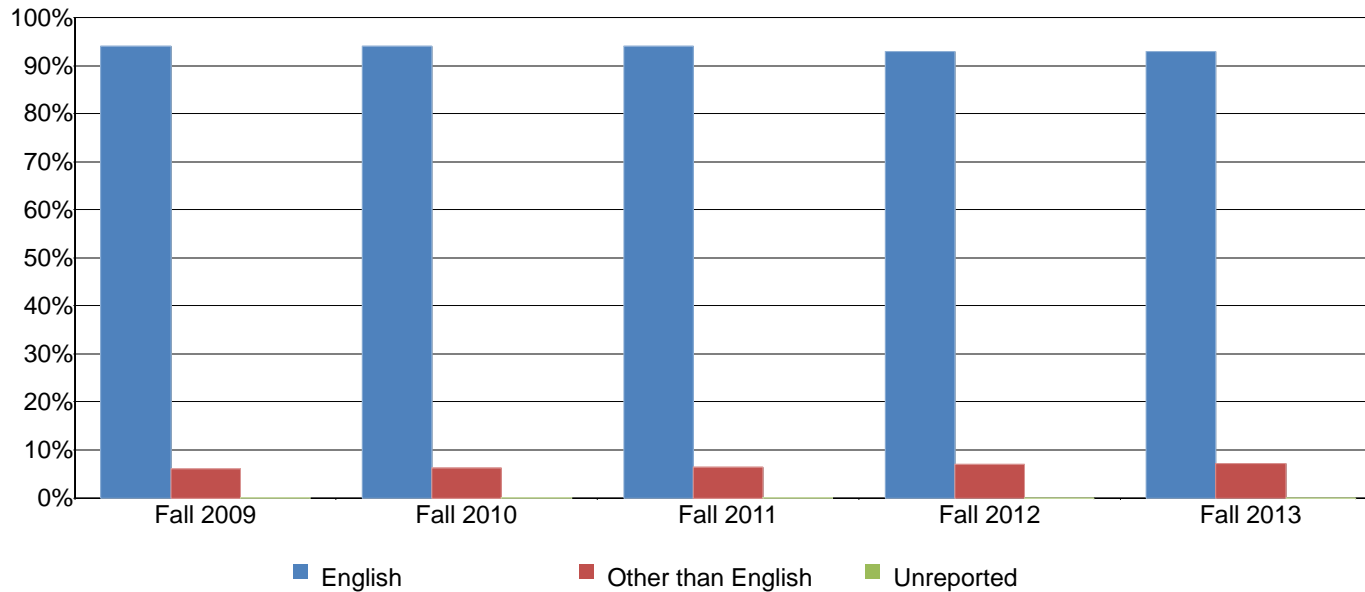


Table 1.7. Miramar College Headcount by Primary Language

	Fall 09		Fall 10		Fall 11		Fall 12		Fall 13		% Change Fall 09-13	College Average Fall 09-13	All Colleges Average Fall 09-13
English	11,293	94%	11,712	94%	12,088	94%	10,689	93%	11,223	93%	-1%	93%	93%
Other than English	735	6%	775	6%	830	6%	798	7%	859	7%	17%	7%	7%
Unreported	2	0%	3	0%	2	0%	0	0%	0	0%	-100%	0%	0%
<b>Total</b>	<b>12,030</b>	<b>100%</b>	<b>12,490</b>	<b>100%</b>	<b>12,920</b>	<b>100%</b>	<b>11,487</b>	<b>100%</b>	<b>12,082</b>	<b>100%</b>	<b>0%</b>	<b>100%</b>	<b>100%</b>

Source: SDCCD Information System

# Miramar College Fact Book 2014

**Headcount by Prior Education Level:** From Fall 2009 to Fall 2013, a majority of the Miramar College student population were high school graduates (67%), on average. Miramar students who had a foreign high school diploma increased 10%, from 720 in Fall 2009 to 790 in Fall 2013. On average, 14% of the Miramar student population had a bachelor's degree or higher and 6% had an associate degree.

Figure 1.8. Miramar College Headcount by Prior Education Level

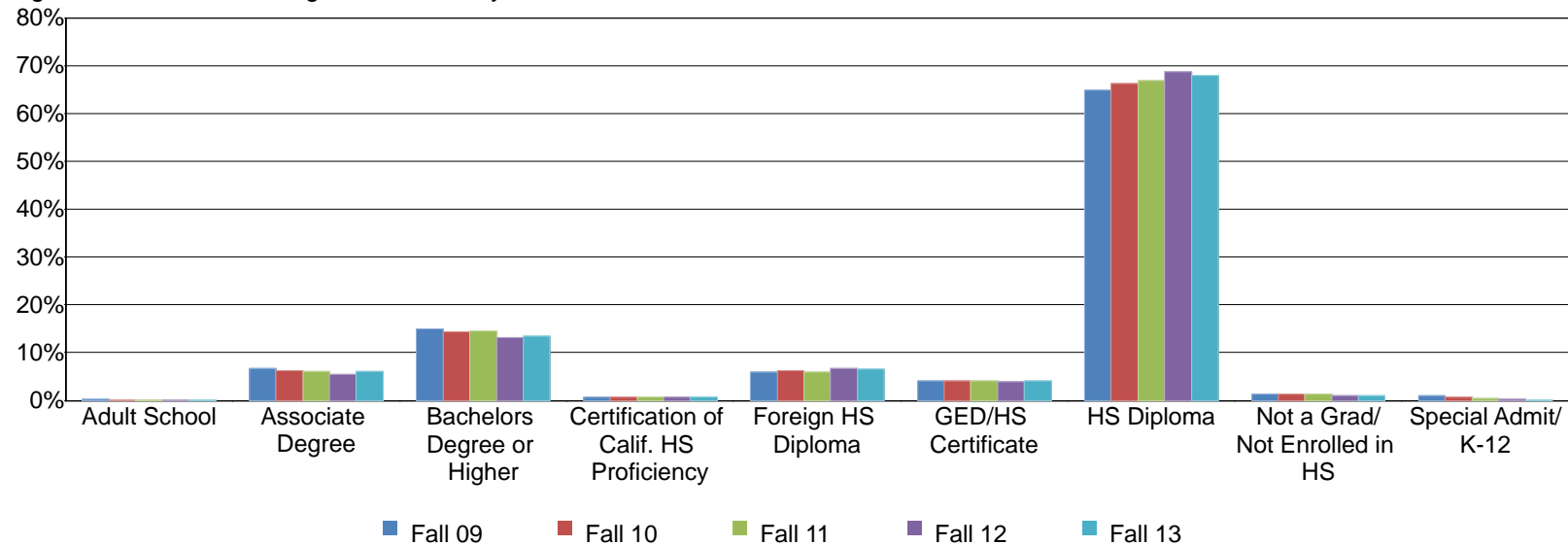


Table 1.8. Miramar College Headcount by Prior Education Level

	Fall 09		Fall 10		Fall 11		Fall 12		Fall 13		% Change Fall 09-13	College Average Fall 09-13	All Colleges Average Fall 09-13
Adult School	26	0%	16	0%	19	0%	11	0%	9	0%	-65%	0%	0%
Associate Degree	814	7%	778	6%	784	6%	623	5%	734	6%	-10%	6%	6%
Bachelors Degree or Higher	1,798	15%	1,788	14%	1,879	15%	1,517	13%	1,630	13%	-9%	14%	14%
Certification of Calif. HS Proficiency	87	1%	92	1%	82	1%	79	1%	86	1%	-1%	1%	1%
Foreign HS Diploma	720	6%	770	6%	762	6%	761	7%	790	7%	10%	6%	6%
GED/HS Certificate	495	4%	500	4%	521	4%	453	4%	485	4%	-2%	4%	4%
HS Diploma	7,808	65%	8,289	66%	8,653	67%	7,892	69%	8,219	68%	5%	67%	67%
Not a Grad/Not Enrolled in HS	161	1%	165	1%	163	1%	124	1%	124	1%	-23%	1%	1%
Special Admit/K-12	121	1%	92	1%	57	0%	27	0%	5	0%	-96%	0%	0%
<b>Total</b>	<b>12,030</b>	<b>100%</b>	<b>12,490</b>	<b>100%</b>	<b>12,920</b>	<b>100%</b>	<b>11,487</b>	<b>100%</b>	<b>12,082</b>	<b>100%</b>	<b>0%</b>	<b>100%</b>	<b>100%</b>

Source: SDCCD Information System

# Miramar College Fact Book 2014

**Headcount by Service Area of Residence:** Between Fall 2009 and Fall 2013, on average, 26% of the students who attended Miramar College resided within the Miramar service area. Among the three college service areas, the greatest proportion of Miramar students resided within its service area. Forty-eight percent of the students who attended Miramar College resided outside of the SDCCD service area.

Figure 1.9. Miramar College Headcount by Service Area of Residence

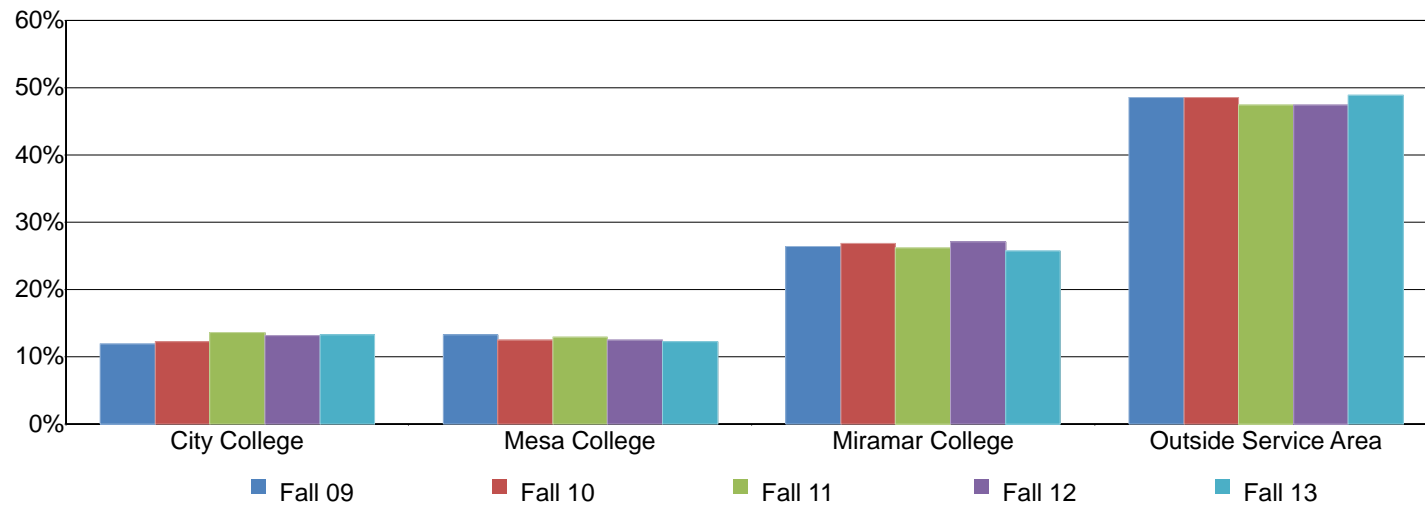


Table 1.9. Miramar College Headcount by Service Area of Residence

	Fall 09		Fall 10		Fall 11		Fall 12		Fall 13		% Change Fall 09-13	College Average Fall 09-13	All Colleges Average Fall 09-13
City College	1,435	12%	1,531	12%	1,759	14%	1,508	13%	1,599	13%	11%	13%	13%
Mesa College	1,593	13%	1,559	12%	1,662	13%	1,432	12%	1,482	12%	-7%	13%	13%
Miramar College	3,167	26%	3,346	27%	3,379	26%	3,107	27%	3,105	26%	-2%	26%	26%
Outside Service Area	5,835	49%	6,054	48%	6,120	47%	5,440	47%	5,896	49%	1%	48%	48%
<b>Total</b>	<b>12,030</b>	<b>100%</b>	<b>12,490</b>	<b>100%</b>	<b>12,920</b>	<b>100%</b>	<b>11,487</b>	<b>100%</b>	<b>12,082</b>	<b>100%</b>	<b>0%</b>	<b>100%</b>	<b>100%</b>

Source: SDCCD Information System



# Miramar College Fact Book 2014

**Headcount by First Generation:** Between Fall 2009 and Fall 2013, on average, one in five Miramar students reported being first generation college students (23%). Those who were first generation college students displayed a 7% increase in headcount, while those who were not first generation college students displayed a 1% decrease between Fall 2009 and Fall 2013.

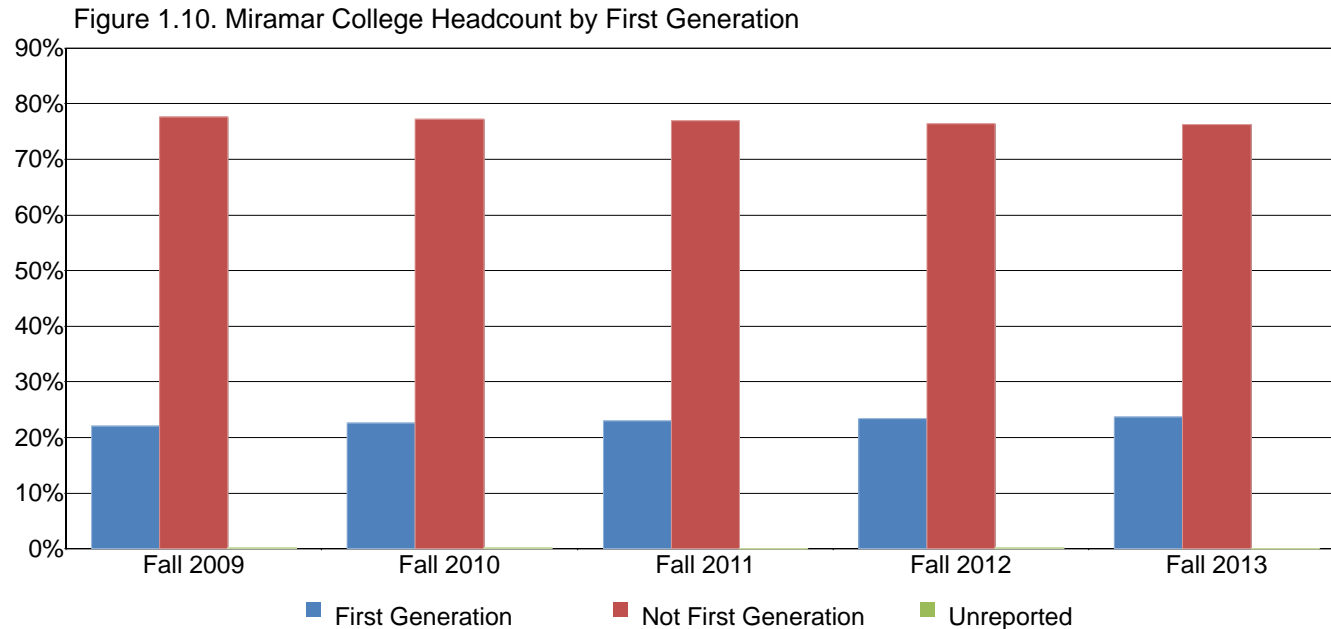


Table 1.10. Miramar College Headcount by First Generation

	Fall 09		Fall 10		Fall 11		Fall 12		Fall 13		% Change Fall 09-13	College Average Fall 09-13	All Colleges Average Fall 09-13
First Generation	2,660	22%	2,823	23%	2,972	23%	2,696	23%	2,854	24%	7%	23%	23%
Not First Generation	9,344	78%	9,646	77%	9,937	77%	8,778	76%	9,217	76%	-1%	77%	77%
Unreported	26	0%	21	0%	11	0%	13	0%	11	0%	-58%	0%	0%
<b>Total</b>	<b>12,030</b>	<b>100%</b>	<b>12,490</b>	<b>100%</b>	<b>12,920</b>	<b>100%</b>	<b>11,487</b>	<b>100%</b>	<b>12,082</b>	<b>100%</b>	<b>0%</b>	<b>100%</b>	<b>100%</b>

Source: SDCCD Information System

# Miramar College Fact Book 2014

**Headcount by Residency Status:** Between Fall 2009 and Fall 2013, on average, 98% of Miramar College's students were California residents and just 2% were non-residents. Between the five fall terms, the number of students who were non-residents increased 22%, and the number of students who were residents remained stable.

Figure 1.11. Miramar College Headcount by Residency Status

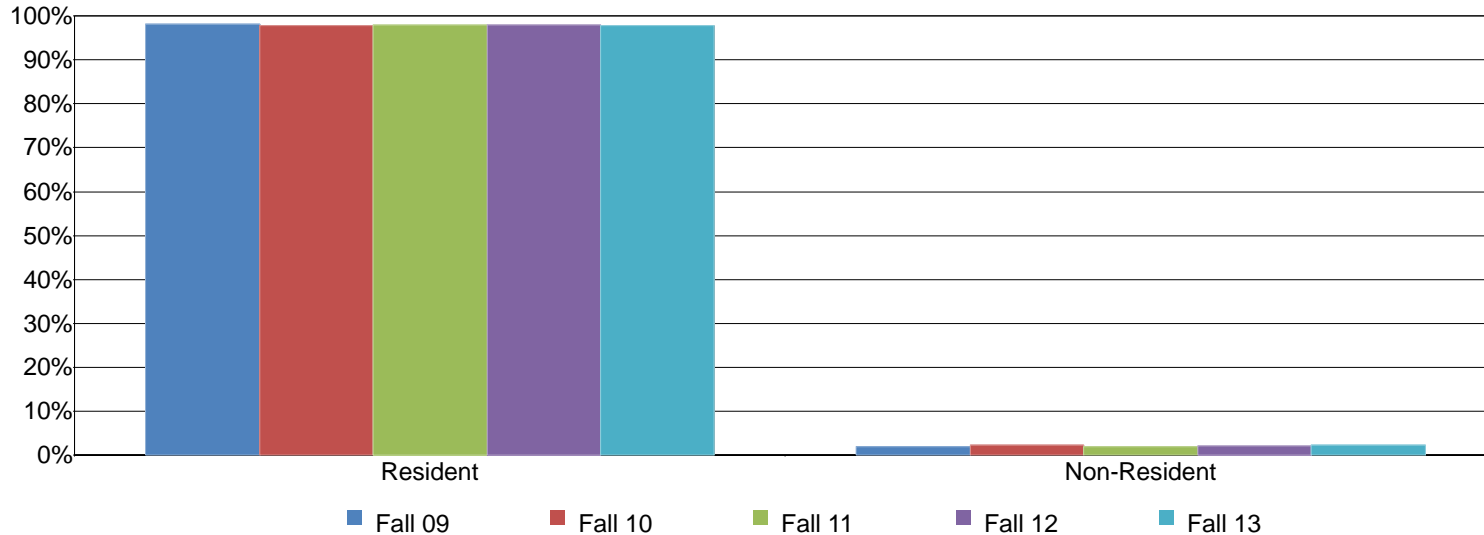


Table 1.11. Miramar College Headcount by Residency Status

	Fall 09		Fall 10		Fall 11		Fall 12		Fall 13		% Change Fall 09-13	College Average Fall 09-13	All Colleges Average Fall 09-13
Resident	11,813	98%	12,223	98%	12,671	98%	11,249	98%	11,818	98%	0%	98%	98%
Non-Resident	217	2%	267	2%	249	2%	238	2%	264	2%	22%	2%	2%
<b>Total</b>	<b>12,030</b>	<b>100%</b>	<b>12,490</b>	<b>100%</b>	<b>12,920</b>	<b>100%</b>	<b>11,487</b>	<b>100%</b>	<b>12,082</b>	<b>100%</b>	<b>0%</b>	<b>100%</b>	<b>100%</b>

Source: SDCCD Information System

# Miramar College Fact Book 2014

**Headcount by Disability Support Programs and Services (DSPS):** On average, 3% of the Miramar student population received disability support services between Fall 2009 and Fall 2013. This was comparable to the percentage of students served by DSPS for all colleges in the District (3%). Moreover, the number of students who received disability services increased 58% between Fall 2009 and Fall 2013, while those who had not received disability services decreased 1%.

Figure 1.12. Miramar College Headcount by Disability Support Programs and Services (DSPS)

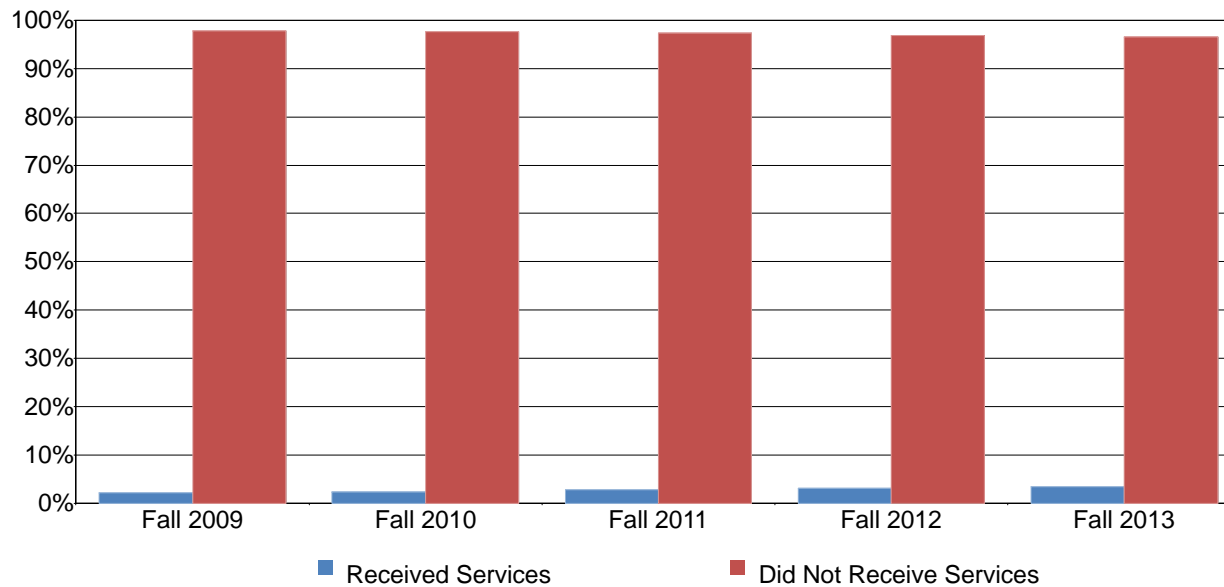


Table 1.12. Miramar College Headcount by Disability Support Programs and Services (DSPS)

	Fall 09		Fall 10		Fall 11		Fall 12		Fall 13		% Change Fall 09-13	College Average Fall 09-13	All Colleges Average Fall 09-13
Received Services	262	2%	292	2%	354	3%	352	3%	414	3%	58%	3%	3%
Did Not Receive Services	11,768	98%	12,198	98%	12,566	97%	11,135	97%	11,668	97%	-1%	97%	97%
<b>Total</b>	<b>12,030</b>	<b>100%</b>	<b>12,490</b>	<b>100%</b>	<b>12,920</b>	<b>100%</b>	<b>11,487</b>	<b>100%</b>	<b>12,082</b>	<b>100%</b>	<b>0%</b>	<b>100%</b>	<b>100%</b>

Source: SDCCD Information System

# Miramar College Fact Book 2014

**Headcount by Extended Opportunity Programs and Services (EOPS):** On average, 3% of the Miramar student population received EOPS services between Fall 2009 and Fall 2013. This was comparable to the percentage of students served by EOPS for all colleges in the District (3%). While students at Miramar who had received EOPS services increased 16%, students who had not received EOPS services remained stable between Fall 2009 and Fall 2013.

Figure 1.13. Miramar College Headcount by Extended Opportunity Programs and Services (EOPS)

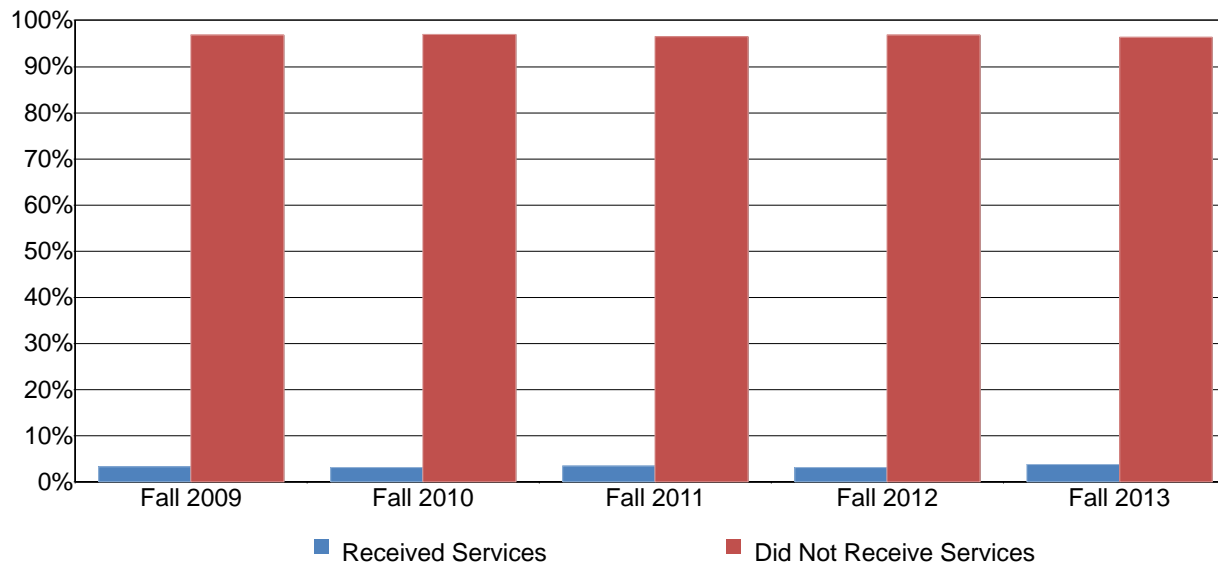


Table 1.13. Miramar College Headcount by Extended Opportunity Programs and Services (EOPS)

	Fall 09		Fall 10		Fall 11		Fall 12		Fall 13		% Change Fall 09-13	College Average Fall 09-13	All Colleges Average Fall 09-13
Received Services	391	3%	384	3%	447	3%	370	3%	452	4%	16%	3%	3%
Did Not Receive Services	11,639	97%	12,106	97%	12,473	97%	11,117	97%	11,630	96%	-0%	97%	97%
<b>Total</b>	<b>12,030</b>	<b>100%</b>	<b>12,490</b>	<b>100%</b>	<b>12,920</b>	<b>100%</b>	<b>11,487</b>	<b>100%</b>	<b>12,082</b>	<b>100%</b>	<b>0%</b>	<b>100%</b>	<b>100%</b>

Source: SDCCD Information System

# Miramar College Fact Book 2014

**Headcount by Day, Evening, & Online Status:** On average, 40% of the Miramar student population took day courses exclusively. One in five students (20%) took online courses exclusively. Students that took exclusively evening courses decreased 23%, whereas students that took day and evening courses increased 25% between Fall 2009 and Fall 2013.

Figure 1.14. Miramar College Headcount by Day, Evening, & Online Status

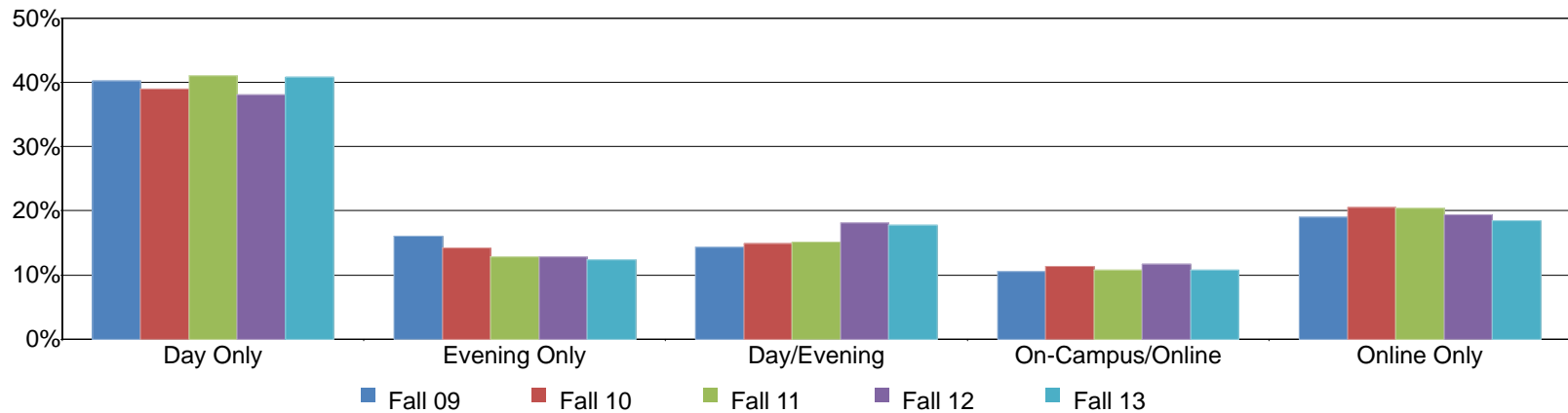


Table 1.14. Miramar College Headcount by Day, Evening, & Online Status

	Fall 09		Fall 10		Fall 11		Fall 12		Fall 13		% Change Fall 09-13	College Average Fall 09-13	All Colleges Average Fall 09-13
Day Only	4,838	40%	4,876	39%	5,297	41%	4,373	38%	4,933	41%	2%	40%	41%
Evening Only	1,928	16%	1,778	14%	1,653	13%	1,475	13%	1,486	12%	-23%	14%	14%
Day/Evening	1,715	14%	1,864	15%	1,945	15%	2,074	18%	2,140	18%	25%	16%	22%
On-Campus/Online	1,267	11%	1,417	11%	1,391	11%	1,335	12%	1,301	11%	3%	11%	15%
Online Only	2,282	19%	2,555	20%	2,634	20%	2,230	19%	2,222	18%	-3%	20%	8%
<b>Total</b>	<b>12,030</b>	<b>100%</b>	<b>12,490</b>	<b>100%</b>	<b>12,920</b>	<b>100%</b>	<b>11,487</b>	<b>100%</b>	<b>12,082</b>	<b>100%</b>	<b>0%</b>	<b>100%</b>	<b>100%</b>

Source: SDCCD Information System

# Miramar College Fact Book 2014

**Headcount by Military Status:** Over the past five fall terms, on average, 10% of Miramar College students were active duty military or veterans, and another 4% were dependents. Between Fall 2009 and Fall 2013, the number of active duty military and veteran students increased 59%, while the number of non-military students decreased 3%, and the number of dependents decreased 42%.

Figure 1.15. Miramar College Headcount by Military Status

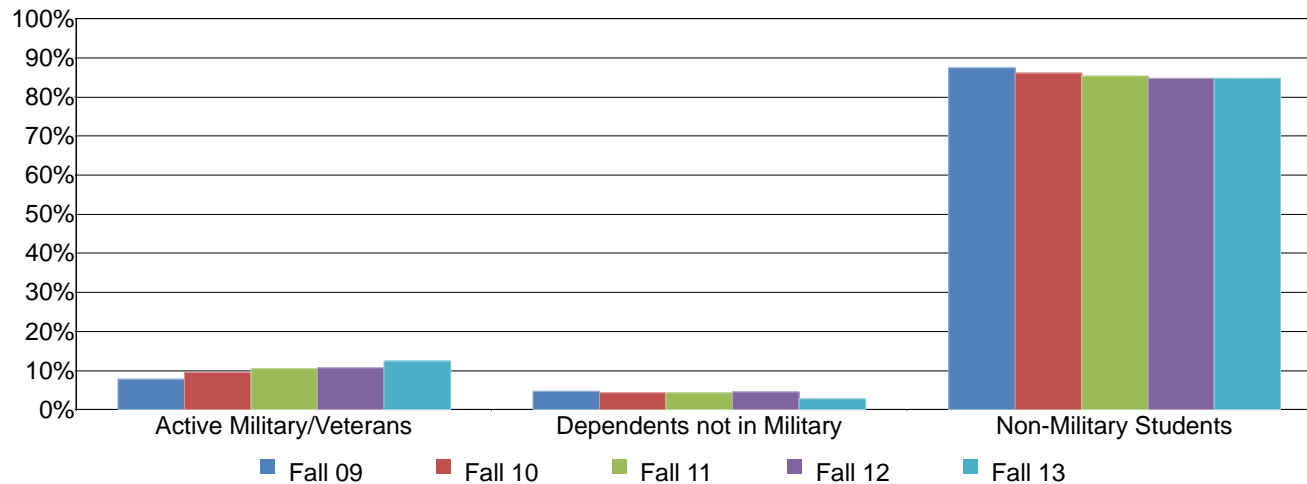


Table 1.15. Miramar College Headcount by Military Status

	Fall 09		Fall 10		Fall 11		Fall 12		Fall 13		% Change Fall 09-13	College Average Fall 09-13	All Colleges Average Fall 09-13
Active Military/Veterans	951	8%	1,187	10%	1,349	10%	1,225	11%	1,516	13%	59%	10%	8%
Dependents not in Military	569	5%	550	4%	557	4%	530	5%	329	3%	-42%	4%	3%
Non-Military Students	10,510	87%	10,753	86%	11,014	85%	9,732	85%	10,237	85%	-3%	86%	89%
<b>Total</b>	<b>12,030</b>	<b>100%</b>	<b>12,490</b>	<b>100%</b>	<b>12,920</b>	<b>100%</b>	<b>11,487</b>	<b>100%</b>	<b>12,082</b>	<b>100%</b>	<b>0%</b>	<b>100%</b>	<b>100%</b>

Source: SDCCD Information System

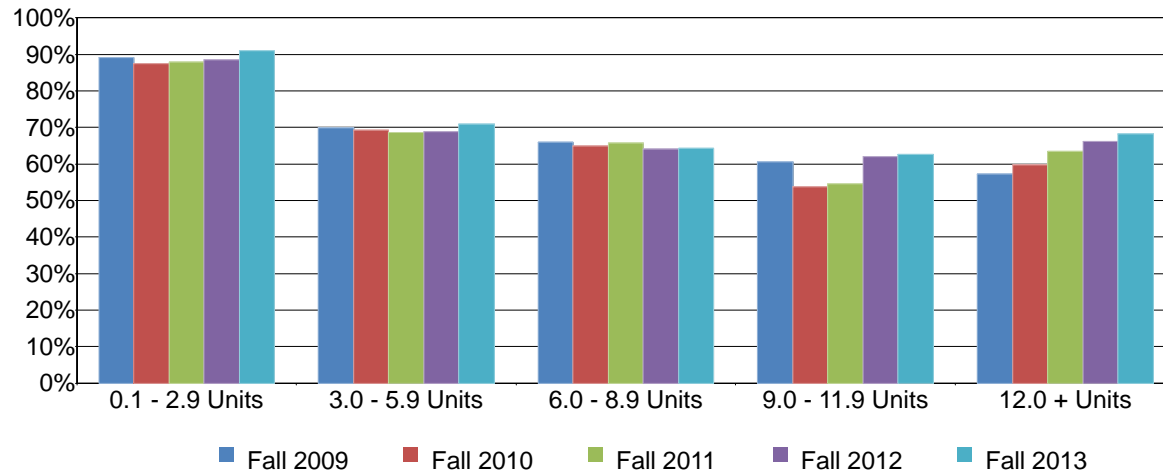
Note. The Dependents not in Military category consists of dependents/spouses of military personnel that are not an active military/veteran.

# Miramar College Fact Book 2014

---

**Headcount by Units Attempted by Units Earned:** Table 1.16 shows the interplay between units attempted (in rows) and units earned (in columns). The greatest proportion of students who attempted and earned units were those in the 0.1-2.9 unit range on average (89%). The lowest proportion of students who attempted and earned units were those in the 9.0-11.9 unit range on average (59%). Students who attempted and earned 12.0 or more units increased 47% between Fall 2009 and Fall 2013.

Figure 1.16. Miramar College Headcount by Units Attempted by Units Earned



# Miramar College Fact Book 2014

Table 1.16. Miramar College Headcount by Units Attempted by Units Earned

		Units Earned						
		0 Units	0.1 - 2.9 Units	3.0 - 5.9 Units	6.0 - 8.9 Units	9.0 - 11.9 Units	12.0 + Units	
Units Attempted	Fall 2009	0.1 - 2.9 Units	11%	<b>89%</b>				
		3.0 - 5.9 Units	29%	1%	<b>70%</b>			
		6.0 - 8.9 Units	16%	1%	17%	<b>66%</b>		
		9.0 - 11.9 Units	11%	1%	11%	17%	<b>61%</b>	
		12.0 + Units	6%	1%	6%	10%	19%	<b>57%</b>
Fall 2010	0.1 - 2.9 Units	13%	<b>87%</b>					
	3.0 - 5.9 Units	30%	1%	<b>69%</b>				
	6.0 - 8.9 Units	17%	1%	17%	<b>65%</b>			
	9.0 - 11.9 Units	12%	1%	13%	21%	<b>54%</b>		
	12.0 + Units	7%	1%	6%	10%	16%	<b>60%</b>	
Fall 2011	0.1 - 2.9 Units	12%	<b>88%</b>					
	3.0 - 5.9 Units	30%	1%	<b>69%</b>				
	6.0 - 8.9 Units	18%	1%	15%	<b>66%</b>			
	9.0 - 11.9 Units	12%	1%	13%	20%	<b>55%</b>		
	12.0 + Units	7%	1%	5%	9%	14%	<b>64%</b>	
Fall 2012	0.1 - 2.9 Units	12%	<b>88%</b>					
	3.0 - 5.9 Units	30%	1%	<b>69%</b>				
	6.0 - 8.9 Units	15%	2%	18%	<b>64%</b>			
	9.0 - 11.9 Units	9%	1%	10%	18%	<b>62%</b>		
	12.0 + Units	5%	0%	5%	8%	16%	<b>66%</b>	
Fall 2013	0.1 - 2.9 Units	9%	<b>91%</b>					
	3.0 - 5.9 Units	28%	1%	<b>71%</b>				
	6.0 - 8.9 Units	16%	2%	18%	<b>64%</b>			
	9.0 - 11.9 Units	10%	1%	11%	15%	<b>63%</b>		
	12.0 + Units	6%	0%	4%	8%	13%	<b>68%</b>	
% Change Fall 09-13		---	-11%	-2%	-4%	6%	47%	
Average Fall 09-13		---	89%	70%	65%	59%	63%	

Source: SDCCD Information System

Note. Percent change and average were based on counts.



**Section II  
Persistence Rates**

# Miramar College Fact Book 2014

---

This section of the Fact Book contains information on the term and annual persistence rates for first-time to college students. For purposes of this report, the term persistence rate is the percentage of first-time to college students who enrolled in a fall term as of official census who received a grade notation of A, B, C, D, F, P, NP, I, or RD and who enrolled in at least one course in the subsequent spring term and received a grade notation of A, B, C, D, F, P, NP, I, or RD (SDSU and UCSD-only students and sections are excluded. Intersession, tutoring, in-service, and cancelled classes are excluded). Annual persistence follows the same operational definition; however, student enrollments are tracked from fall to spring to fall.

The information in this section includes five years of data and is reported as follows:

- 1) Overall
- 2) Gender
- 3) Ethnicity
- 4) Age

# Miramar College Fact Book 2014

**Overall Persistence:** The average term persistence rates of first-time students at Miramar College was 67% among the Fall 2008 to Fall 2013 cohorts, and the average annual persistence rate among the Fall 2008 to Fall 2012 cohorts was 48%. Overall, term persistence rates increased six percentage points, from 62% in Fall 2008 to 68% in Fall 2013. Annual persistence rates increased 10 percentage points, from 43% in Fall 2008 to 53% in Fall 2012. The average term and annual persistence rates of first-time Miramar College students were lower compared to the average term and annual persistence rate of first-time students enrolled in all colleges in the District (76% & 54%, respectively).

Figure 2.1. Miramar College First-Time Student Overall Annual Persistence

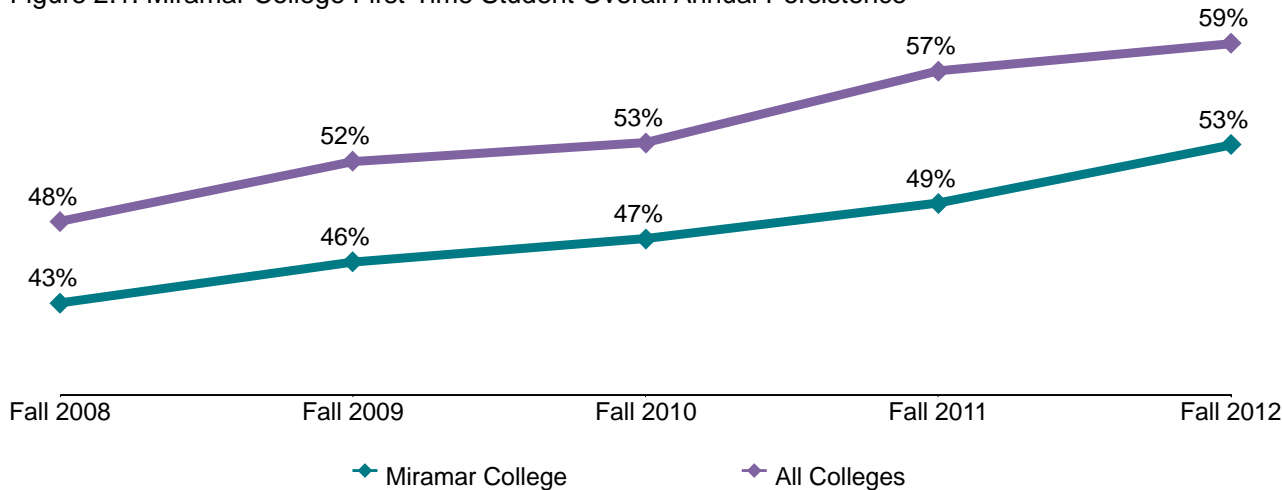


Table 2.1. Miramar College First-Time Student Overall Term and Annual Persistence

Cohort	Fall Enrolled Cohort	Term Persistence Counts	Term Persistence Rates	Annual Persistence Counts	Annual Persistence Rates	All Colleges Term Persistence	All Colleges Annual Persistence
Fall 2008	964	601	62%	419	43%	69%	48%
Fall 2009	948	602	64%	435	46%	72%	52%
Fall 2010	1,003	659	66%	474	47%	76%	53%
Fall 2011	1,122	777	69%	554	49%	78%	57%
Fall 2012	1,126	818	73%	595	53%	79%	59%
Fall 2013	1,141	773	68%	---	---	78%	---
<b>Total/Average</b>	<b>6,304</b>	<b>4,230</b>	<b>67%</b>	<b>2,477</b>	<b>48%</b>	<b>76%</b>	<b>54%</b>

Source: SDCCD Information System

Note. Overall annual persistence counts and rates exclude the Fall 2013 cohort due to the unavailability of Fall 2014 data.

# Miramar College Fact Book 2014

**Annual Persistence by Gender:** On average, annual persistence rates of female students (50%) were higher than their male student counterpart (47%) between the Fall 2008 and Fall 2012 cohorts. Persistence rates for both female and male students increased nine percentage points and 10 percentage points, respectively, between the Fall 2008 and Fall 2012 cohorts.

Figure 2.2. Miramar College First-Time Student Annual Persistence by Gender

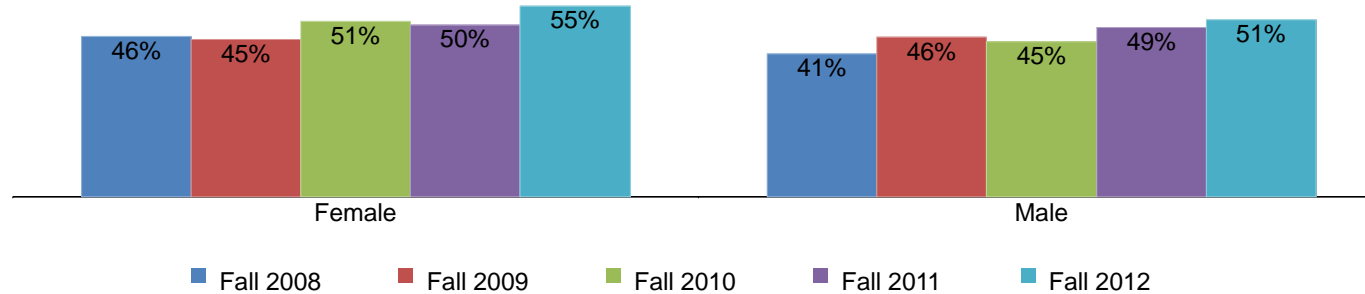


Table 2.2. Miramar College First-Time Student Annual Persistence by Gender

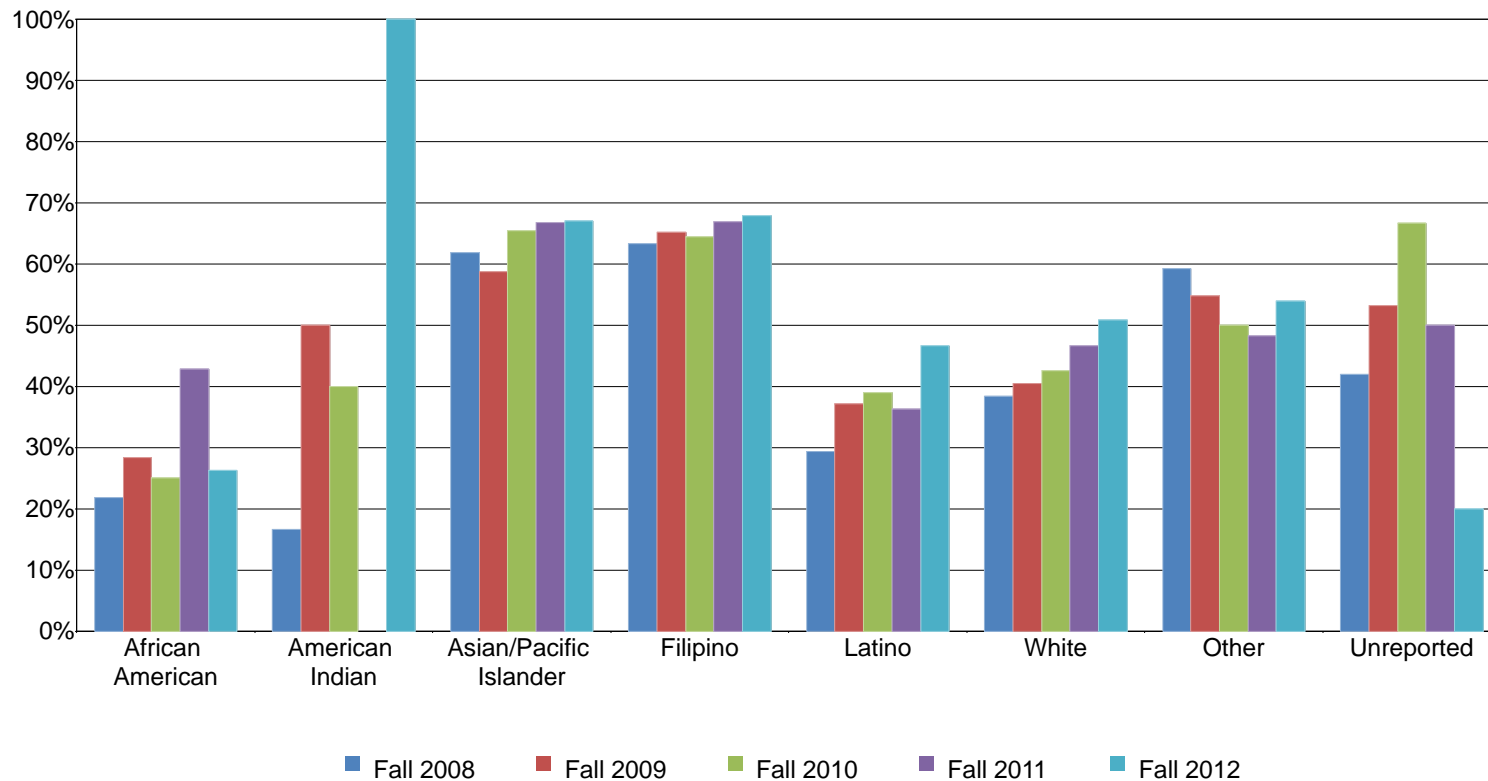
Cohort	Female			Male		
	Fall Enrolled Cohort	Annual Persistence Counts	Annual Persistence Rates	Fall Enrolled Cohort	Annual Persistence Counts	Annual Persistence Rates
Fall 2008	398	185	46%	566	234	41%
Fall 2009	409	186	45%	539	249	46%
Fall 2010	394	200	51%	609	274	45%
Fall 2011	472	235	50%	650	319	49%
Fall 2012	465	257	55%	661	338	51%
<b>Total/Average</b>	<b>2,138</b>	<b>1,063</b>	<b>50%</b>	<b>3,025</b>	<b>1,414</b>	<b>47%</b>

Source: SDCCD Information System

# Miramar College Fact Book 2014

**Annual Persistence by Ethnicity:** The ethnic groups with the highest annual persistence rates, on average, were Filipino students (66%) and Asian/Pacific Islander students (64%). Annual persistence rates increased for all ethnic groups between Fall 2008 and Fall 2012. Latino and White students increased 18 percentage points and 13 percentage points, respectively, over this five year period.

Figure 2.3. Miramar College First-Time Student Annual Persistence by Ethnicity



# Miramar College Fact Book 2014

Table 2.3. Miramar College First-Time Student Annual Persistence by Ethnicity

Cohort	African American			American Indian			Asian/Pacific Islander			Filipino		
	Fall Enrolled Cohort	Annual Persistence Counts	Annual Persistence Rates	Fall Enrolled Cohort	Annual Persistence Counts	Annual Persistence Rates	Fall Enrolled Cohort	Annual Persistence Counts	Annual Persistence Rates	Fall Enrolled Cohort	Annual Persistence Counts	Annual Persistence Rates
Fall 2008	55	12	22%	6	1	17%	168	104	62%	109	69	63%
Fall 2009	60	17	28%	4	2	50%	143	84	59%	109	71	65%
Fall 2010	44	11	25%	5	2	40%	133	87	65%	104	67	64%
Fall 2011	56	24	43%	2	0	0%	193	129	67%	112	75	67%
Fall 2012	57	15	26%	2	2	100%	185	124	67%	112	76	68%
<b>Total/Average</b>	<b>272</b>	<b>79</b>	<b>29%</b>	<b>19</b>	<b>7</b>	<b>37%</b>	<b>822</b>	<b>528</b>	<b>64%</b>	<b>546</b>	<b>358</b>	<b>66%</b>

Cohort	Latino			White			Other			Unreported		
	Fall Enrolled Cohort	Annual Persistence Counts	Annual Persistence Rates	Fall Enrolled Cohort	Annual Persistence Counts	Annual Persistence Rates	Fall Enrolled Cohort	Annual Persistence Counts	Annual Persistence Rates	Fall Enrolled Cohort	Annual Persistence Counts	Annual Persistence Rates
Fall 2008	167	49	29%	370	142	38%	27	16	59%	62	26	42%
Fall 2009	207	77	37%	336	136	40%	42	23	55%	47	25	53%
Fall 2010	233	91	39%	392	167	43%	74	37	50%	18	12	67%
Fall 2011	289	105	36%	373	174	47%	87	42	48%	10	5	50%
Fall 2012	285	133	47%	368	187	51%	102	55	54%	15	3	20%
<b>Total/Average</b>	<b>1,181</b>	<b>455</b>	<b>39%</b>	<b>1,839</b>	<b>806</b>	<b>44%</b>	<b>332</b>	<b>173</b>	<b>52%</b>	<b>152</b>	<b>71</b>	<b>47%</b>

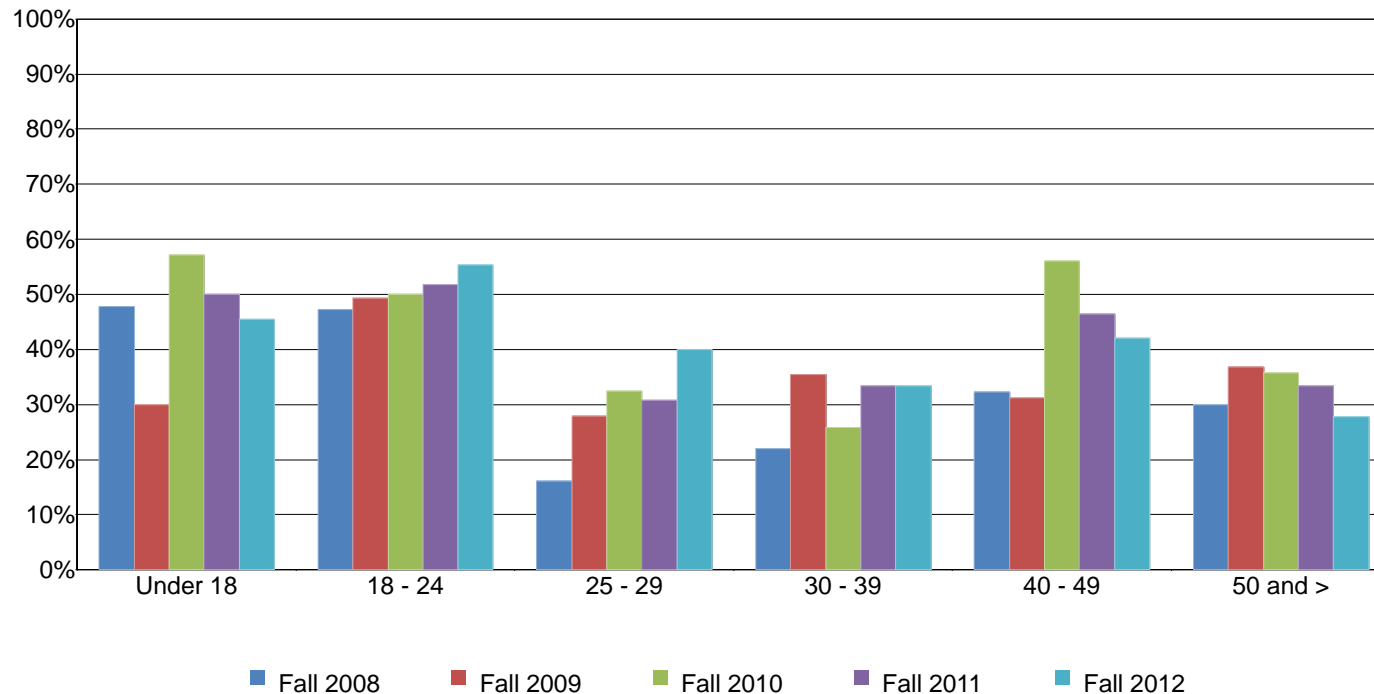
Source: SDCCD Information System

# Miramar College Fact Book 2014

---

**Annual Persistence by Age:** On average, from the Fall 2008 cohort to the Fall 2012 cohort, annual persistence rates for students between ages 18 and 24 and students under age 18 had the highest persistence rates (51% & 47%, respectively). Annual persistence rates increased by 10 percentage points between the Fall 2008 and Fall 2012 cohorts for students ages 40-49, and eight percentage points for those in the 18-24 age group.

Figure 2.4. Miramar College First-Time Student Annual Persistence by Age



# Miramar College Fact Book 2014

Table 2.4. Miramar College First-Time Student Annual Persistence by Age

Cohort	Under 18			18 - 24			25 - 29		
	Fall Enrolled Cohort	Annual Persistence Counts	Annual Persistence Rates	Fall Enrolled Cohort	Annual Persistence Counts	Annual Persistence Rates	Fall Enrolled Cohort	Annual Persistence Counts	Annual Persistence Rates
Fall 2008	23	11	48%	794	375	47%	56	9	16%
Fall 2009	10	3	30%	762	376	49%	79	22	28%
Fall 2010	14	8	57%	815	407	50%	77	25	32%
Fall 2011	8	4	50%	955	495	52%	65	20	31%
Fall 2012	11	5	45%	964	534	55%	75	30	40%
<b>Total/Average</b>	<b>66</b>	<b>31</b>	<b>47%</b>	<b>4,290</b>	<b>2,187</b>	<b>51%</b>	<b>352</b>	<b>106</b>	<b>30%</b>

Cohort	30 - 39			40 - 49			50 and >		
	Fall Enrolled Cohort	Annual Persistence Counts	Annual Persistence Rates	Fall Enrolled Cohort	Annual Persistence Counts	Annual Persistence Rates	Fall Enrolled Cohort	Annual Persistence Counts	Annual Persistence Rates
Fall 2008	50	11	22%	31	10	32%	10	3	30%
Fall 2009	62	22	35%	16	5	31%	19	7	37%
Fall 2010	58	15	26%	25	14	56%	14	5	36%
Fall 2011	60	20	33%	28	13	46%	6	2	33%
Fall 2012	39	13	33%	19	8	42%	18	5	28%
<b>Total/Average</b>	<b>269</b>	<b>81</b>	<b>30%</b>	<b>119</b>	<b>50</b>	<b>42%</b>	<b>67</b>	<b>22</b>	<b>33%</b>

Source: SDCCD Information System



## **Section III Student Completion**

# Miramar College Fact Book 2014

---

This section of the Fact Book contains information on various student completion outcomes which may be considered indirect assessments of student learning. The outcomes included in this section are: 1) Annual Successful Course Completion Rates, 2) Annual Retention Rates, 3) Annual GPA, 4) Annual Awards Conferred, and 5) Annual Transfer Volume. All of the information in this section includes five years of data by gender, age, and ethnicity. The following describes in detail each of the outcomes listed.

- 1) **Successful Course Completion Rates.** The first outcome reported in this section is successful course completion, or student success rate. For purposes of this report, the success rate is the percentage of students who complete a course with a grade of A, B, C, or P out of total official census enrollments. Tutoring, non-credit, and cancelled classes are excluded.
- 2) **Retention Rates.** The second outcome reported in this section is retention rate. For purposes of this report, the retention rate is the percentage of students who complete a course with a grade of A, B, C, D, F, P, NP, I or RD out of total official census enrollments. Tutoring and cancelled classes are excluded.
- 3) **Annual GPA.** The third outcome reported in this section is annual GPA. For purposes of this report, the annual GPA is the total grade point average of all students for a given academic year.
- 4) **Annual Awards Conferred.** The fourth outcome reported in this section is the annual awards conferred. For purposes of this report, the annual awards conferred are the total number of associate degrees and certificates awarded in a single academic year (summer, fall, and spring). *Note. Annual awards conferred that are reported in this Fact Book are considered preliminary data. Please see the upcoming Awards Conferred Supplement report for final annual awards conferred numbers.*
- 5) **Annual Transfer Volume.** The last outcome reported in this section is the number of students who transferred annually. For the purposes of this report, the annual transfer volume represents the total number of students who transferred to a 4-year institution and were enrolled at an SDCCD college at any time within six semesters prior to transferring (including stop outs). The student must also have completed 12 or more transferrable units from any one of the SDCCD credit colleges within six years prior to transferring to a 4-year institution. *Note. Transfer volume parameters were changed for this report. Final data is now reported for 2008/09 – 2012/13. Additionally, due to entry requirements at the CSU/UCs that delay transferring, the number of semesters prior to transferring was increased from three to six. Thus, totals will be different when comparing historical terms to previous editions of the Fact Book. Please see the 2014 SDCCD Transfer Report: A Longitudinal Perspective for comparable transfer volume numbers.*

# Miramar College Fact Book 2014

**Overall Success Rates:** Miramar College annual success rate increased by two percentage points, with a five-year average of 73% from 2009/10 to 2013/14. The success rate average was higher than the success rate average of all colleges in the District (68%). The Miramar College annual success rates were higher in each year compared to the annual success rates of all colleges in the District.

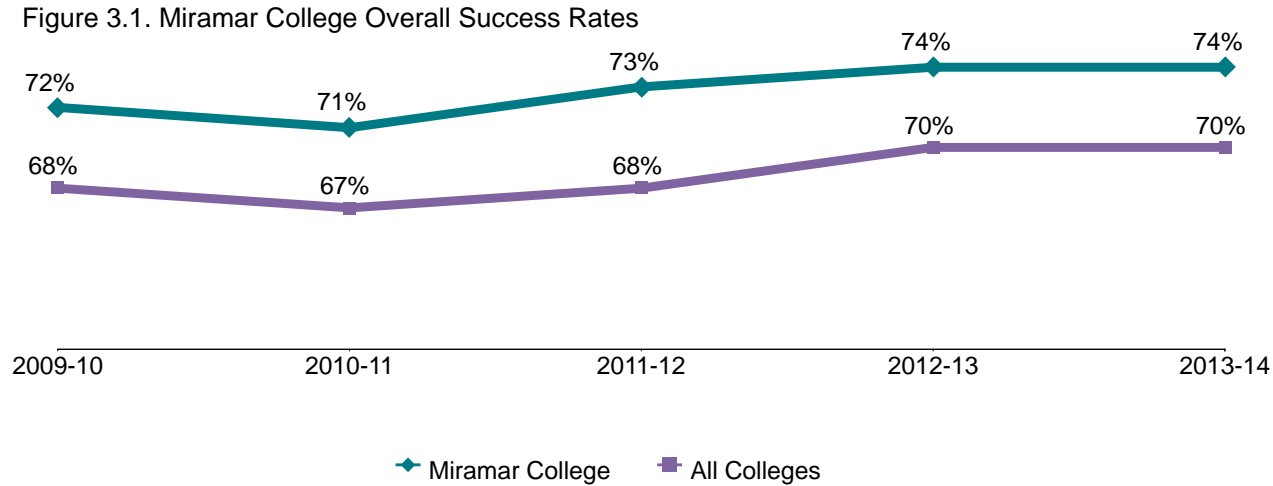


Table 3.1. Miramar College Overall Success Rates

	2009-10	2010-11	2011-12	2012-13	2013-14	% Difference 09/10 - 13/14	College Average 09/10 - 13/14	All Colleges Average 09/10 - 13/14
<b>Average</b>	72%	71%	73%	74%	74%	2%	73%	68%

Source: SDCCD Information System

# Miramar College Fact Book 2014

**Success Rates by Gender:** On average, male student success rates (73%) were slightly higher than their female student counterpart (72%) between 2009/10 and 2013/14. The success rates for female students at Miramar College increased two percentage points from 2009/10 to 2013/14. At Miramar College, both female and male students had higher average success rates compared to the average success rates of the female and male student populations of all colleges in the District (69% & 68%, respectively).

Figure 3.2. Miramar College Success Rates by Gender

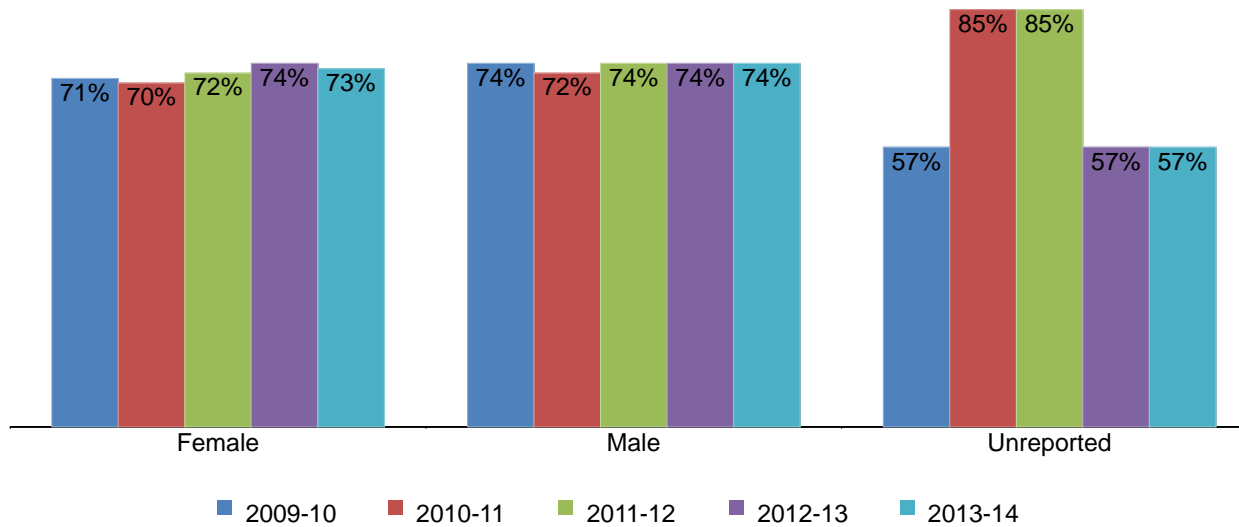


Table 3.2. Miramar College Success Rates by Gender

	2009-10	2010-11	2011-12	2012-13	2013-14	% Difference 09/10 - 13/14	College Average 09/10 - 13/14	All Colleges Average 09/10 - 13/14
Female	71%	70%	72%	74%	73%	2%	72%	69%
Male	74%	72%	74%	74%	74%	0%	73%	68%
Unreported	57%	85%	85%	57%	57%	0%	72%	75%
<b>Average</b>	<b>72%</b>	<b>71%</b>	<b>73%</b>	<b>74%</b>	<b>74%</b>	<b>2%</b>	<b>73%</b>	<b>68%</b>

Source: SDCCD Information System

Note. Unreported cells may have fewer than 25 students in a given year.

# Miramar College Fact Book 2014

**Success Rates by Ethnicity:** On average, the ethnic groups with the highest success rates between 2009/10 and 2013/14 were White students (76%) and Asian/Pacific Islanders students (75%). The average success rate of African American students (59%) was lower than the average success rate of the general student population at Miramar College and all colleges in the District (73% & 68%, respectively). The average success rates of Filipino students (72%), Latino students (69%), and students categorized as "Other" ethnicities (68%) were comparable to or higher than the average success rate of the general student population for all colleges in the District, while the same averages were lower than the average success rate of the general student population at Miramar. Among reported ethnic groups, Filipino, Asian/Pacific Islander, and White students showed increases in success rates between 2009/10 and 2013/14.

Figure 3.3. Miramar College Success Rates by Ethnicity

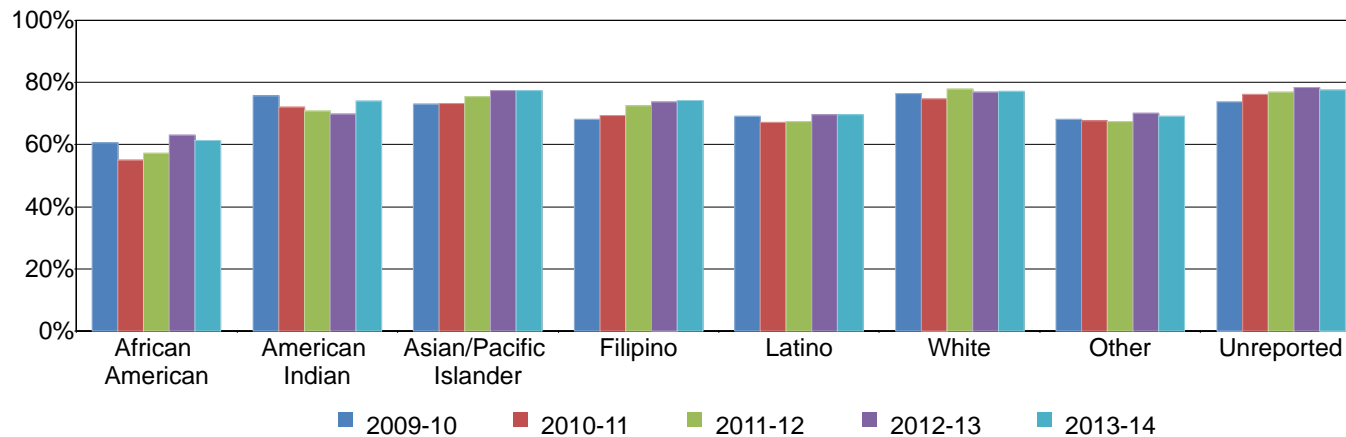


Table 3.3. Miramar College Success Rates by Ethnicity

	2009-10	2010-11	2011-12	2012-13	2013-14	% Difference 09/10 - 13/14	College Average 09/10 - 13/14	All Colleges Average 09/10 - 13/14
African American	61%	55%	57%	63%	61%	0%	59%	57%
American Indian	76%	72%	71%	70%	74%	-2%	73%	68%
Asian/Pacific Islander	73%	73%	75%	77%	77%	4%	75%	74%
Filipino	68%	69%	72%	74%	74%	6%	72%	71%
Latino	69%	67%	67%	70%	69%	0%	69%	64%
White	76%	75%	78%	77%	77%	1%	76%	74%
Other	68%	68%	67%	70%	69%	1%	68%	67%
Unreported	74%	76%	77%	78%	78%	4%	76%	70%
<b>Average</b>	<b>72%</b>	<b>71%</b>	<b>73%</b>	<b>74%</b>	<b>74%</b>	<b>2%</b>	<b>73%</b>	<b>68%</b>

Source: SDCCD Information System

# Miramar College Fact Book 2014

**Success Rates by Age:** With the exception of students under age 18, a general trend between 2009/10 and 2013/14 showed as age increased so did the average success rate. Students under age 18 had the highest success rate on average (84%). The average success rates of most age groups were higher than the average success rates of the general student populations at Miramar College and all colleges in the District (73% & 68%, respectively).

Figure 3.4. Miramar College Success Rates by Age

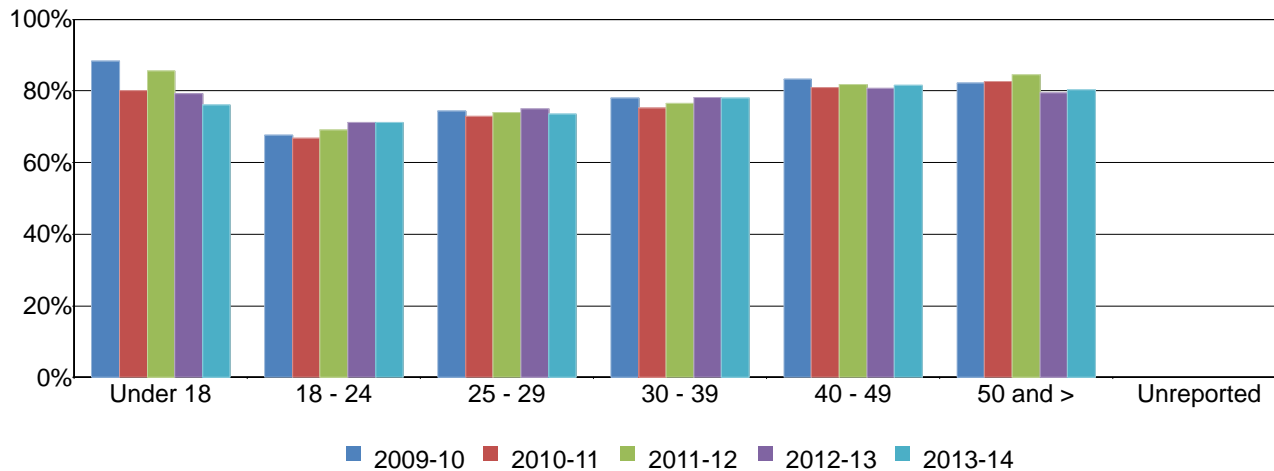


Table 3.4. Miramar College Success Rates by Age

	2009-10	2010-11	2011-12	2012-13	2013-14	% Difference 09/10 - 13/14	College Average 09/10 - 13/14	All Colleges Average 09/10 - 13/14
Under 18	88%	80%	86%	79%	76%	-12%	84%	85%
18 - 24	68%	67%	69%	71%	71%	3%	69%	66%
25 - 29	74%	73%	74%	75%	74%	0%	74%	71%
30 - 39	78%	75%	76%	78%	78%	0%	77%	72%
40 - 49	83%	81%	82%	81%	82%	-1%	82%	73%
50 and >	82%	83%	84%	79%	80%	-2%	82%	74%
<b>Average</b>	<b>72%</b>	<b>71%</b>	<b>73%</b>	<b>74%</b>	<b>74%</b>	<b>2%</b>	<b>73%</b>	<b>68%</b>

Source: SDCCD Information System

# Miramar College Fact Book 2014

**Overall Retention Rates:** Miramar College annual retention rates increased one percentage point between 2009/10 and 2013/14, with a five-year average of 88%. This retention rate average was higher than the retention rate average of all colleges in the District (85%). The Miramar College annual retention rates were higher in each year compared to the annual retention rates of all colleges in the District between 2009/10 and 2013/14.

Figure 3.5. Miramar College Overall Retention Rates

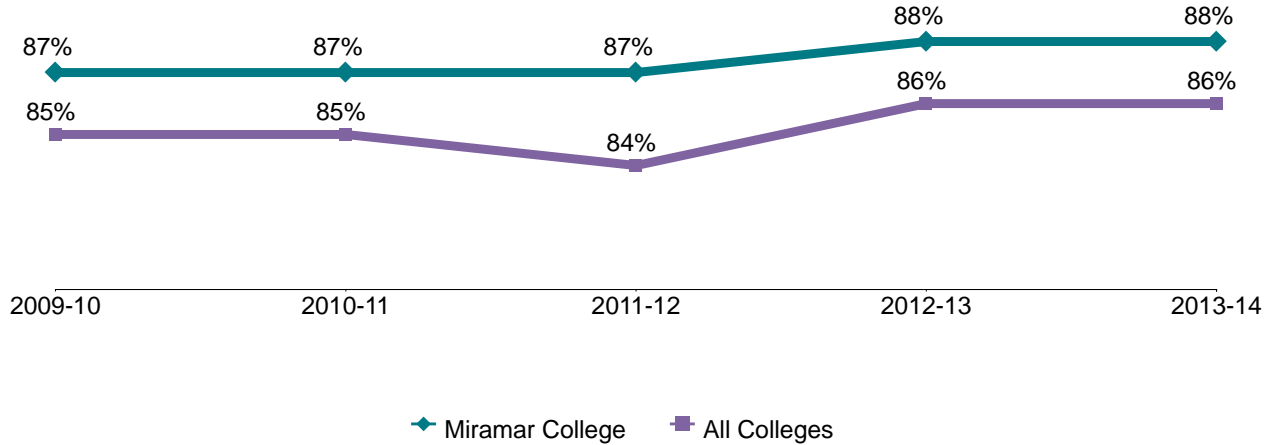


Table 3.5. Miramar College Overall Retention Rates

	2009-10	2010-11	2011-12	2012-13	2013-14	% Difference 09/10 - 13/14	College Average 09/10 - 13/14	All Colleges Average 09/10 - 13/14
<b>Average</b>	87%	87%	87%	88%	88%	1%	88%	85%

Source: SDCCD Information System

# Miramar College Fact Book 2014

**Retention Rates by Gender:** On average, male student retention rates (88%) were slightly higher than their female student counterpart (87%) between 2009/10 and 2013/14. The average retention rates of both female and male students at Miramar College were higher than the average retention rates of the female and male student populations of all colleges in the District (85% each). Both female and male students at Miramar College had average retention rates comparable to the average retention rate of the general student population at Miramar (88%). Furthermore, between 2009/10 and 2013/14, the average retention rates of both the female and male student populations at Miramar College were higher than the average retention rate of the general student population of all colleges in the District (85%).

Figure 3.6. Miramar College Retention Rates by Gender

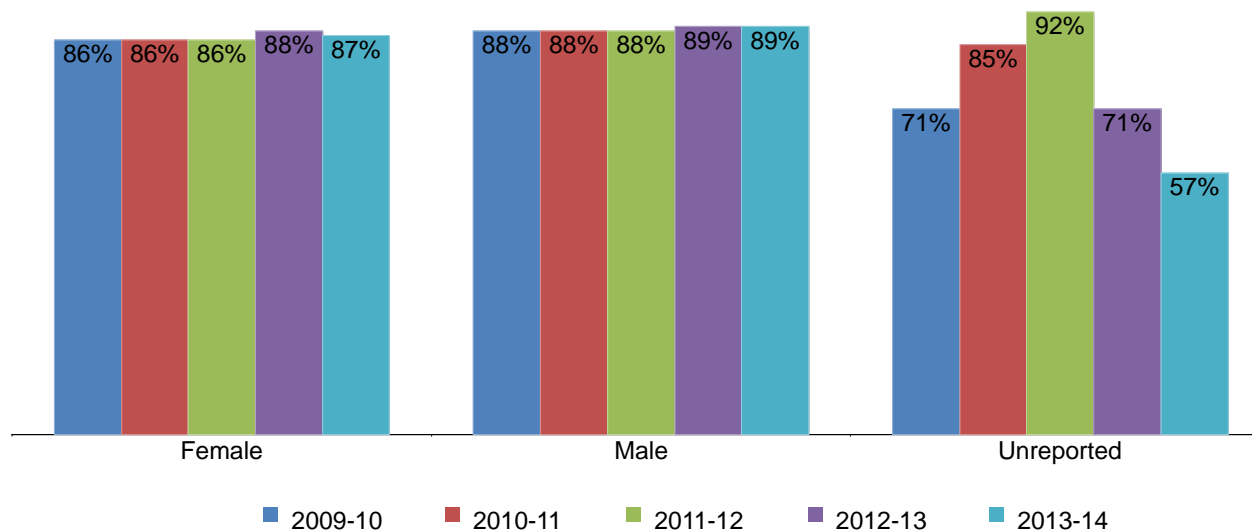


Table 3.6. Miramar College Retention Rates by Gender

	2009-10	2010-11	2011-12	2012-13	2013-14	% Difference 09/10 - 13/14	College Average 09/10 - 13/14	All Colleges Average 09/10 - 13/14
Female	86%	86%	86%	88%	87%	1%	87%	85%
Male	88%	88%	88%	89%	89%	1%	88%	85%
Unreported	71%	85%	92%	71%	57%	-14%	79%	86%
<b>Average</b>	<b>87%</b>	<b>87%</b>	<b>87%</b>	<b>88%</b>	<b>88%</b>	<b>1%</b>	<b>88%</b>	<b>85%</b>

Source: SDCCD Information System

Note. Unreported cells may have fewer than 25 students in a given year.



# Miramar College Fact Book 2014

**Retention Rates by Ethnicity:** The ethnic groups with the highest retention rates, on average, were White students (89%), Asian/Pacific Islander students (88%), Filipino students (87%), and Latino students (87%). The average retention rate of African American students (83%) was lower than the average retention rates of the general student populations at Miramar College (88%) and all colleges in the District (85%). Asian/Pacific Islander students and Filipino students showed increases in retention rates between 2009/10 and 2013/14, while retention rates for African American students and American Indian students declined.

Figure 3.7. Miramar College Retention Rates by Ethnicity

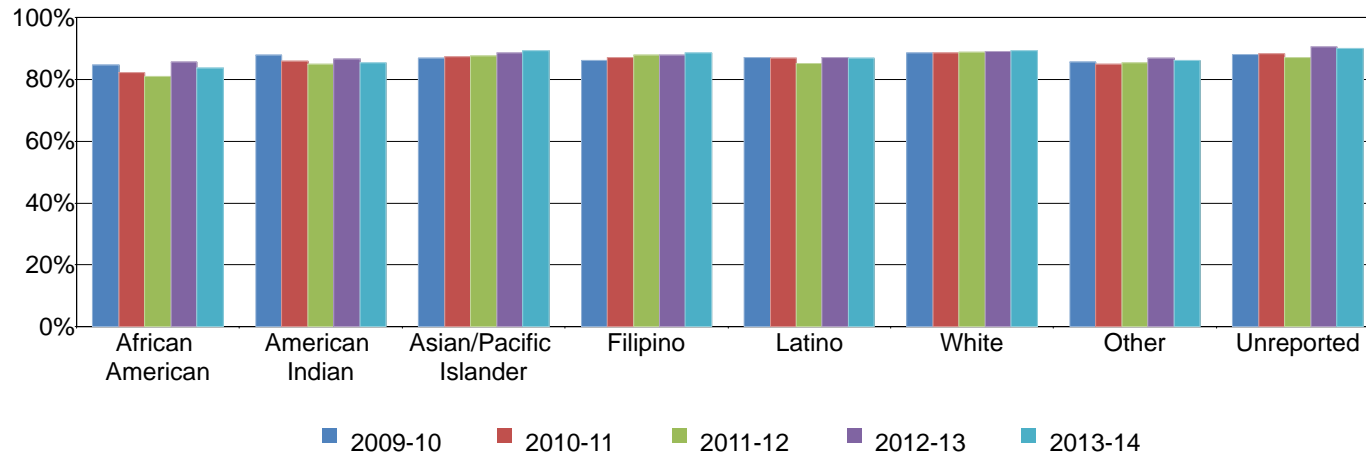


Table 3.7. Miramar College Retention Rates by Ethnicity

	2009-10	2010-11	2011-12	2012-13	2013-14	% Difference 09/10 - 13/14	College Average 09/10 - 13/14	All Colleges Average 09/10 - 13/14
African American	85%	82%	81%	86%	84%	-1%	83%	81%
American Indian	88%	86%	85%	87%	86%	-2%	86%	84%
Asian/Pacific Islander	87%	87%	88%	89%	89%	2%	88%	88%
Filipino	86%	87%	88%	88%	89%	3%	87%	87%
Latino	87%	87%	85%	87%	87%	0%	87%	84%
White	89%	89%	89%	89%	89%	0%	89%	87%
Other	86%	85%	85%	87%	86%	0%	86%	84%
Unreported	88%	88%	87%	90%	90%	2%	88%	85%
<b>Average</b>	<b>87%</b>	<b>87%</b>	<b>87%</b>	<b>88%</b>	<b>88%</b>	<b>1%</b>	<b>88%</b>	<b>85%</b>

Source: SDCCD Information System

# Miramar College Fact Book 2014

**Retention Rates by Age:** Between 2009/10 and 2013/14 a general trend showed as age increased, so did the average retention rates. The average retention rates of most of the age groups were comparable to or higher than the average retention rates of both the general student populations at Miramar College and all colleges in the District (88% and 85%, respectively).

Figure 3.8. Miramar College Retention Rates by Age

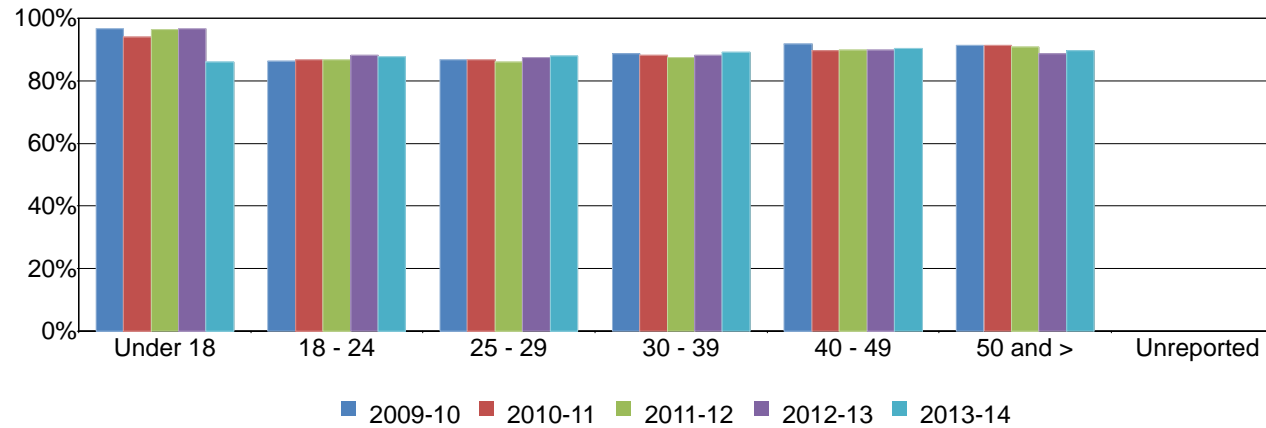


Table 3.8. Miramar College Retention Rates by Age

	2009-10	2010-11	2011-12	2012-13	2013-14	% Difference 09/10 - 13/14	College Average 09/10 - 13/14	All Colleges Average 09/10 - 13/14
Under 18	96%	94%	96%	97%	86%	-10%	95%	96%
18 - 24	86%	87%	87%	88%	88%	2%	87%	85%
25 - 29	87%	87%	86%	87%	88%	1%	87%	85%
30 - 39	89%	88%	87%	88%	89%	0%	88%	85%
40 - 49	92%	90%	90%	90%	90%	-2%	90%	85%
50 and >	91%	91%	91%	89%	90%	-1%	90%	85%
<b>Average</b>	<b>87%</b>	<b>87%</b>	<b>87%</b>	<b>88%</b>	<b>88%</b>	<b>1%</b>	<b>88%</b>	<b>85%</b>

Source: SDCCD Information System

# Miramar College Fact Book 2014

**Overall Annual GPA:** The annual GPAs for Miramar College students increased slightly, from 2.76 in 2009/10 to 2.79 in 2013/14, with a five-year average of 2.75. Miramar's collegewide annual GPA average was higher than the annual GPA average of all colleges in the District (2.65). The Miramar College annual GPAs were higher in each year than the annual GPAs of all colleges in the District between 2009/10 and 2013/14.

Figure 3.9. Miramar College Overall Annual GPA

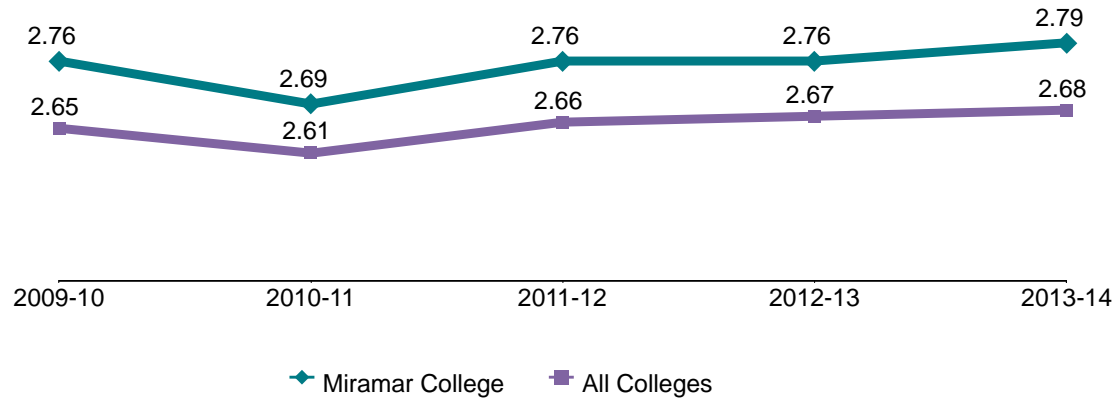


Table 3.9. Miramar College Overall Annual GPA

	2009-10	2010-11	2011-12	2012-13	2013-14	College Average 09/10 - 13/14	All Colleges Average 09/10 - 13/14
<b>Average</b>	2.76	2.69	2.76	2.76	2.79	2.75	2.65

Source: SDCCD Information System

# Miramar College Fact Book 2014

**Annual GPA by Gender:** Between 2009/10 and 2013/14, female students, on average, had slightly higher GPAs compared to their male student counterpart (2.78 & 2.74, respectively). The average annual GPA of both female and male students at Miramar College were higher compared to the average annual GPA of the female and male student populations of all colleges in the District (2.70 & 2.61, respectively). The average annual GPA of the female student population at Miramar was slightly higher than the average annual GPA of the Miramar College general student population (2.75) and the average annual GPA of the general student population of all colleges in the District (2.65). The average annual GPA of male students at Miramar College was comparable to or exceeded the same averages.

Figure 3.10. Miramar College Annual GPA by Gender

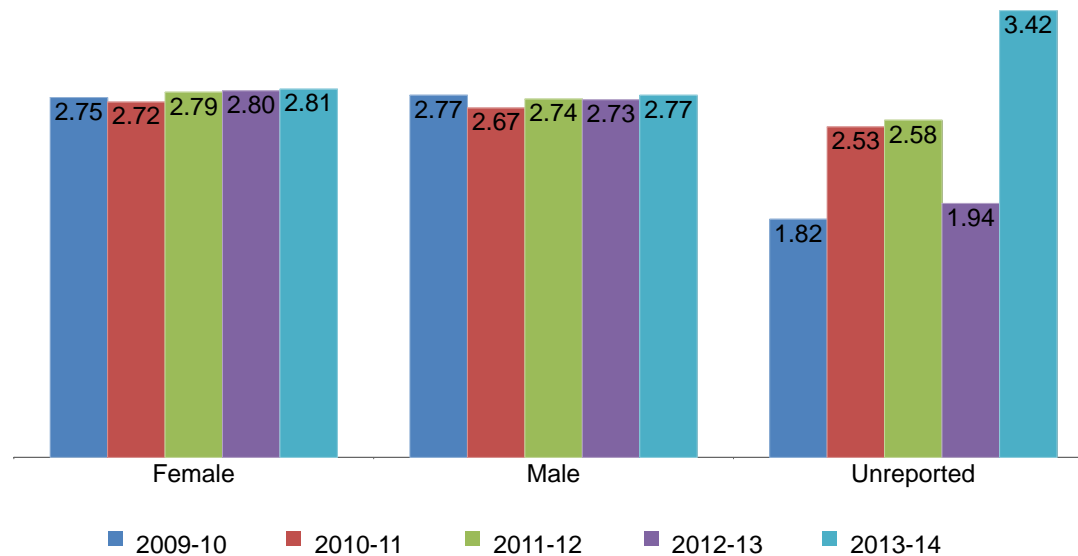


Table 3.10. Miramar College Annual GPA by Gender

	2009-10	2010-11	2011-12	2012-13	2013-14	College Average 09/10 - 13/14	All Colleges Average 09/10 - 13/14
Female	2.75	2.72	2.79	2.80	2.81	2.78	2.70
Male	2.77	2.67	2.74	2.73	2.77	2.74	2.61
Unreported	1.82	2.53	2.58	1.94	3.42	2.45	2.91
<b>Average</b>	<b>2.76</b>	<b>2.69</b>	<b>2.76</b>	<b>2.76</b>	<b>2.79</b>	<b>2.75</b>	<b>2.65</b>

Source: SDCCD Information System

Note. Unreported cells may have fewer than 25 students in a given year.

# Miramar College Fact Book 2014

**Annual GPA by Ethnicity:** Between 2008/09 and 2013/14, Asian/Pacific Islander and White students had the highest GPAs, on average (2.84 & 2.92, respectively). The average annual GPAs of African American students (2.23), Filipino students (2.62), Latino students (2.56), and students categorized as "Other" ethnicities (2.58) were lower than the average annual GPAs of the general student populations at Miramar College and all colleges in the District.

Figure 3.11. Miramar College Annual GPA by Ethnicity

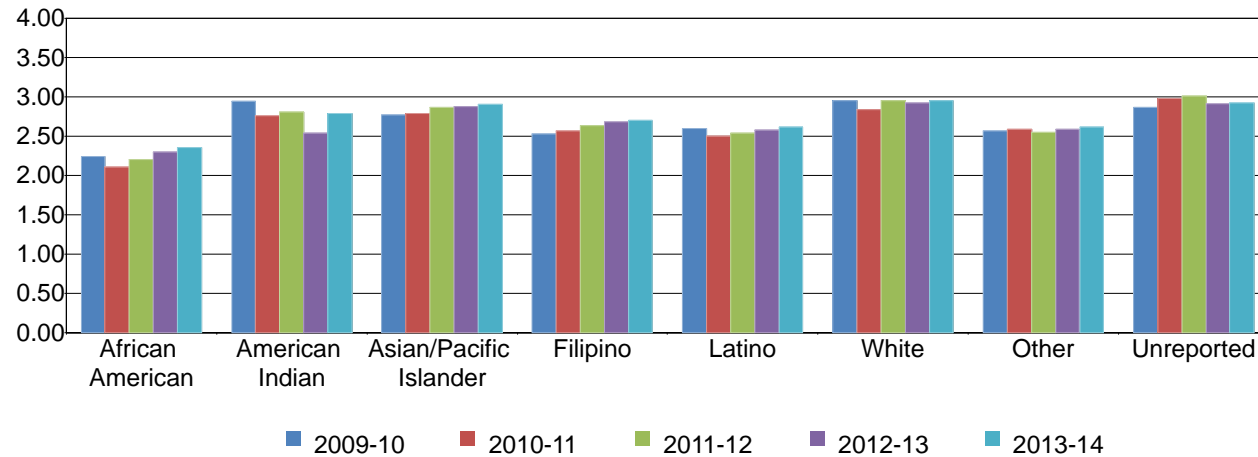


Table 3.11. Miramar College Annual GPA by Ethnicity

	2009-10	2010-11	2011-12	2012-13	2013-14	College Average 09/10 - 13/14	All Colleges Average 09/10 - 13/14
African American	2.24	2.10	2.20	2.30	2.35	2.23	2.25
American Indian	2.94	2.76	2.81	2.53	2.78	2.78	2.68
Asian/Pacific Islander	2.77	2.78	2.86	2.87	2.90	2.84	2.88
Filipino	2.53	2.57	2.63	2.68	2.69	2.62	2.65
Latino	2.59	2.49	2.54	2.57	2.61	2.56	2.41
White	2.95	2.83	2.95	2.92	2.95	2.92	2.89
Other	2.56	2.58	2.54	2.59	2.61	2.58	2.60
Unreported	2.86	2.98	3.01	2.91	2.92	2.93	2.82
<b>Average</b>	<b>2.76</b>	<b>2.69</b>	<b>2.76</b>	<b>2.76</b>	<b>2.79</b>	<b>2.75</b>	<b>2.65</b>

Source: SDCCD Information System

# Miramar College Fact Book 2014

**Annual GPA by Age:** With the exception of students under age 18, a general trend between 2009/10 and 2013/14 showed as age increased, so did the average GPAs. The average annual GPA of students between ages 18 and 24 (2.57) was lower than the average annual GPAs of the general student populations at Miramar College and all colleges in the District (2.75 & 2.65, respectively).

Figure 3.12. Miramar College Annual GPA by Age

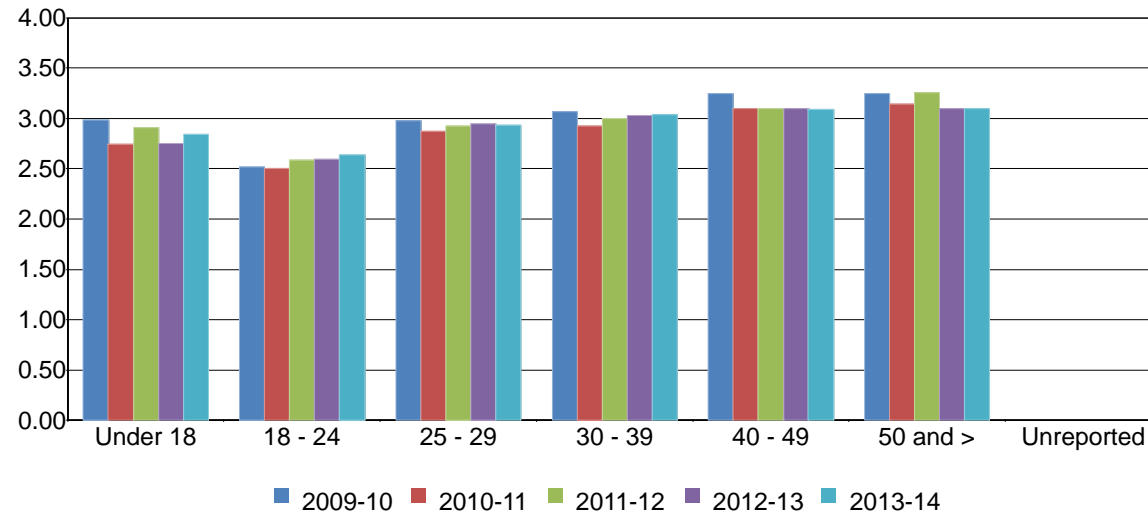


Table 3.12. Miramar College Annual GPA by Age

	2009-10	2010-11	2011-12	2012-13	2013-14	College Average 09/10 - 13/14	All Colleges Average 09/10 - 13/14
Under 18	2.98	2.74	2.91	2.75	2.84	2.87	3.05
18 - 24	2.52	2.50	2.58	2.59	2.64	2.57	2.48
25 - 29	2.98	2.87	2.92	2.95	2.93	2.93	2.83
30 - 39	3.07	2.92	3.00	3.03	3.03	3.01	2.93
40 - 49	3.25	3.10	3.10	3.09	3.09	3.13	2.98
50 and >	3.25	3.14	3.26	3.09	3.10	3.17	3.04
<b>Average</b>	<b>2.76</b>	<b>2.69</b>	<b>2.76</b>	<b>2.76</b>	<b>2.79</b>	<b>2.75</b>	<b>2.65</b>

Source: SDCCD Information System

# Miramar College Fact Book 2014

**Annual Awards Conferred:** On average, 57% of the total awards conferred at Miramar College were associate degrees. Associate degrees awarded decreased 13%, from 579 in 2009/10 to 506 in 2013/14. Certificates requiring 30 to 59 units had a 25% decrease, from 272 in 2009/10 to 203 in 2013/14. The number of associate degrees awarded at Miramar College, on average, was eight percentage points lower than the number of associate degrees conferred within all colleges in the District.

Figure 3.13. Miramar College Overall Annual Awards Conferred

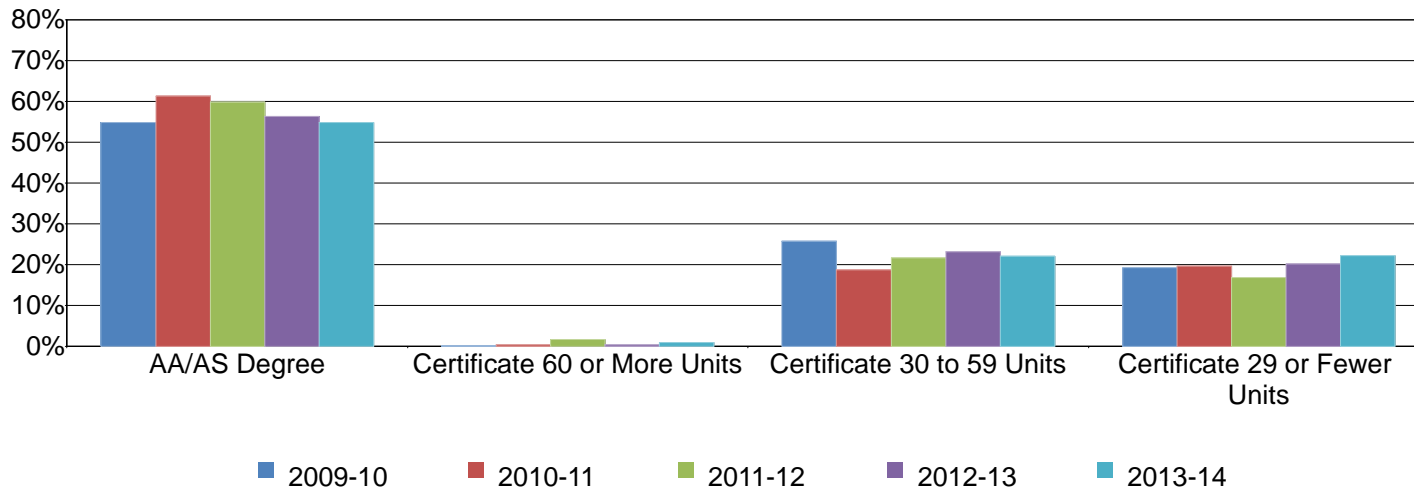


Table 3.13. Miramar College Overall Annual Awards Conferred

	2009-10		2010-11		2011-12		2012-13		2013-14		% Change 09/10-13/14	College Average 09/10-13/14	All Colleges Average 09/10-13/14
AA/AS Degree	579	55%	574	61%	597	60%	601	56%	506	55%	-13%	57%	65%
Certificate 60 or More Units	2	0%	4	0%	16	2%	4	0%	9	1%	350%	1%	0%
Certificate 30 to 59 Units	272	26%	176	19%	216	22%	248	23%	203	22%	-25%	22%	18%
Certificate 29 or Fewer Units	203	19%	183	20%	168	17%	215	20%	205	22%	1%	20%	16%
<b>Total</b>	<b>1,056</b>	<b>100%</b>	<b>937</b>	<b>100%</b>	<b>997</b>	<b>100%</b>	<b>1,068</b>	<b>100%</b>	<b>923</b>	<b>100%</b>	<b>-13%</b>	<b>100%</b>	<b>100%</b>

Source: SDCCD Information System

# Miramar College Fact Book 2014

**Annual Awards Conferred by Gender:** Of the total awards conferred at Miramar College, female and male students (50% each), on average, received the same proportion of associate degrees between 2009/10 and 2013/14. Both female and male students displayed a decrease in associate degrees awarded (16% & 9%, respectively) between 2009/10 and 2013/14. For certificates requiring 30 to 59 units, both female and male students showed a decreasing trend between 2009/10 and 2013/14 (39% & 16%, respectively). Among all award types, female students earned a disproportionately low number of awards at Miramar College compared to the female student population of all colleges in the District. Male students exhibited the opposite pattern.

Figure 3.14.1. Miramar College Annual AA/AS Degrees by Gender

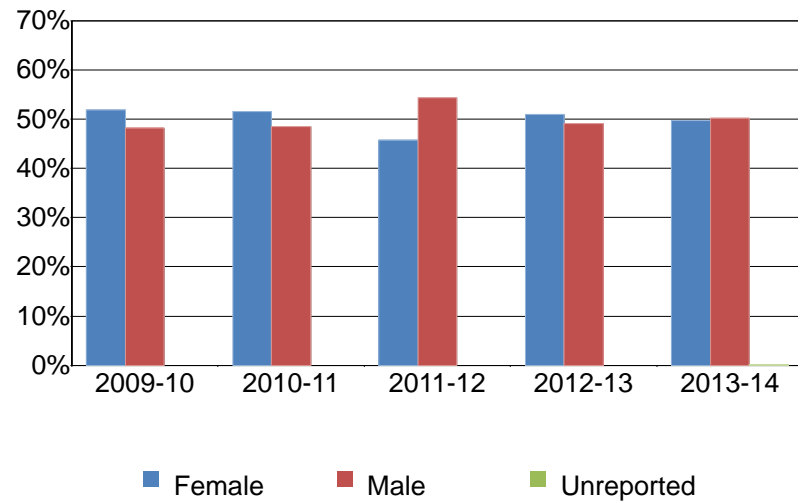


Figure 3.14.2. Miramar College Annual Certificates 60 or More Units by Gender

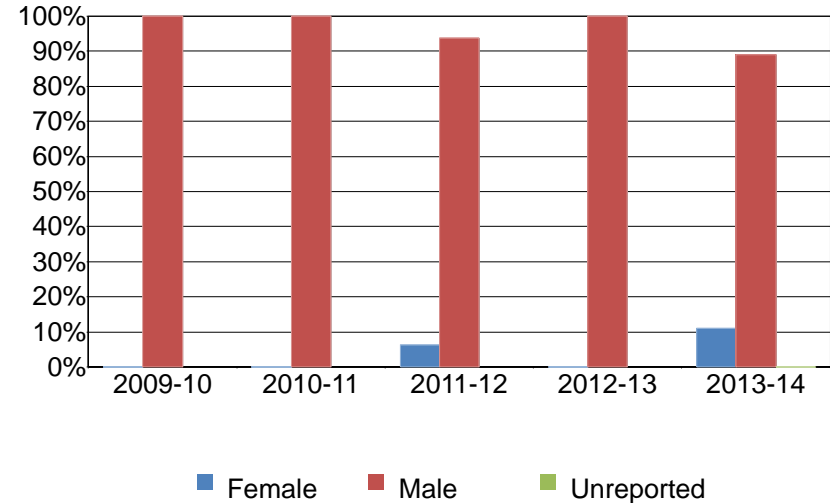


Figure 3.14.3. Miramar College Annual Certificates 30 to 59 Units by Gender

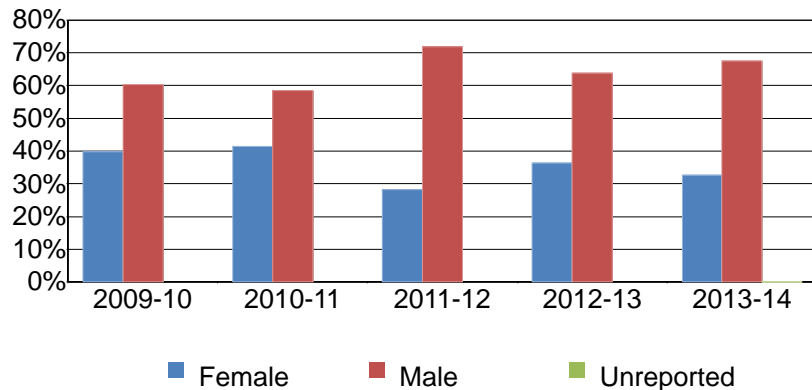
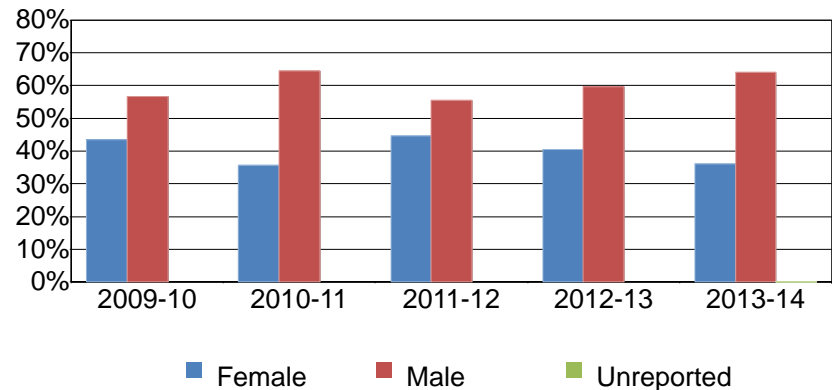


Figure 3.14.4. Miramar College Annual Certificates 29 or Fewer Units by Gender





# Miramar College Fact Book 2014

Table 3.14. Miramar College Annual Awards Conferred by Gender

		2009-10		2010-11		2011-12		2012-13		2013-14		% Change 09/10-13/14	College Average 09/10-13/14	All Colleges Average 09/10-13/14
AA/AS Degree	Female	300	52%	296	52%	273	46%	306	51%	251	50%	-16%	50%	55%
	Male	279	48%	278	48%	324	54%	295	49%	254	50%	-9%	50%	45%
	Unreported	0	0%	0	0%	0	0%	0	0%	1	0%	---	0%	0%
	<b>Total</b>	<b>579</b>	<b>100%</b>	<b>574</b>	<b>100%</b>	<b>597</b>	<b>100%</b>	<b>601</b>	<b>100%</b>	<b>506</b>	<b>100%</b>	<b>-13%</b>	<b>100%</b>	<b>100%</b>
Certificate 60 or More Units	Female	0	0%	0	0%	1	6%	0	0%	1	11%	---	6%	16%
	Male	2	100%	4	100%	15	94%	4	100%	8	89%	300%	94%	84%
	<b>Total</b>	<b>2</b>	<b>100%</b>	<b>4</b>	<b>100%</b>	<b>16</b>	<b>100%</b>	<b>4</b>	<b>100%</b>	<b>9</b>	<b>100%</b>	<b>350%</b>	<b>100%</b>	<b>100%</b>
Certificate 30 to 59 Units	Female	108	40%	73	41%	61	28%	90	36%	66	33%	-39%	36%	48%
	Male	164	60%	103	59%	155	72%	158	64%	137	67%	-16%	64%	52%
	<b>Total</b>	<b>272</b>	<b>100%</b>	<b>176</b>	<b>100%</b>	<b>216</b>	<b>100%</b>	<b>248</b>	<b>100%</b>	<b>203</b>	<b>100%</b>	<b>-25%</b>	<b>100%</b>	<b>100%</b>
Certificate 29 or Fewer Units	Female	88	43%	65	36%	75	45%	87	40%	74	36%	-16%	40%	45%
	Male	115	57%	118	64%	93	55%	128	60%	131	64%	14%	60%	55%
	<b>Total</b>	<b>203</b>	<b>100%</b>	<b>183</b>	<b>100%</b>	<b>168</b>	<b>100%</b>	<b>215</b>	<b>100%</b>	<b>205</b>	<b>100%</b>	<b>1%</b>	<b>100%</b>	<b>100%</b>
<b>Grand Total</b>		<b>1,056</b>	<b>100%</b>	<b>937</b>	<b>100%</b>	<b>997</b>	<b>100%</b>	<b>1,068</b>	<b>100%</b>	<b>923</b>	<b>100%</b>	<b>-13%</b>	<b>100%</b>	<b>100%</b>

Source: SDCCD Information System

# Miramar College Fact Book 2014

**Annual Awards Conferred by Ethnicity:** From 2009/10 to 2013/14, White students received the most awards across all of the award categories. Latino students had the second highest number of awards conferred across most of the award categories. With the exception of African American and Latino students, the number of associate degrees conferred at Miramar College decreased for all ethnicities between 2009/10 and 2013/14. African American and Latino students at Miramar College were consistently underrepresented across most award categories when compared to the same ethnic student populations within all colleges in the District, whereas both White and Filipino students were overrepresented across most types of awards conferred when compared to the same ethnic student populations within all colleges in the District.

Figure 3.15.1. Miramar College Annual AA/AS Degrees by Ethnicity

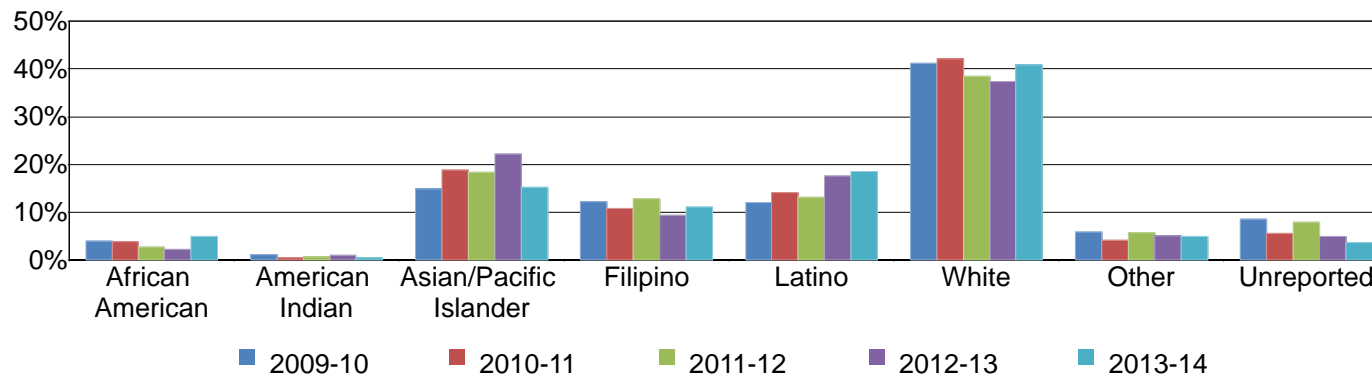
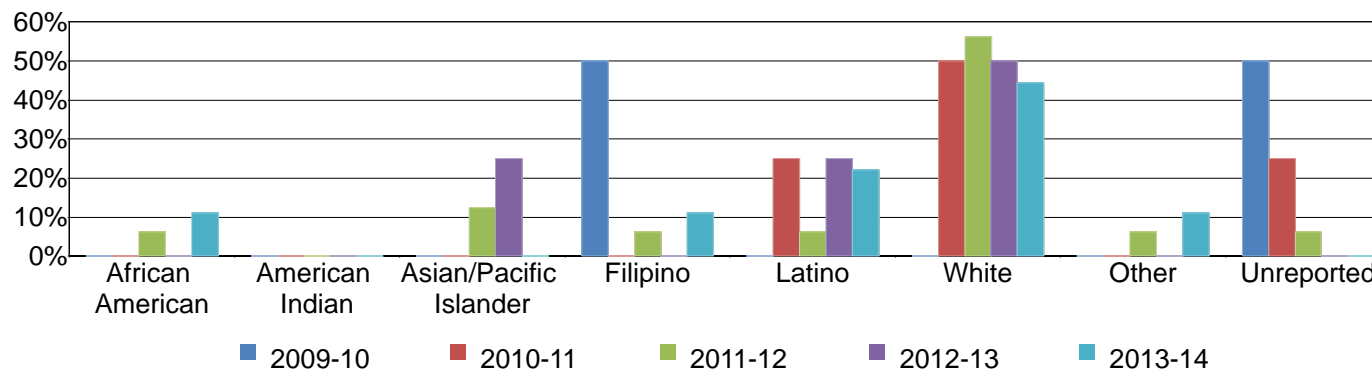


Figure 3.15.2. Miramar College Annual Certificates 60 or More Units by Ethnicity



# Miramar College Fact Book 2014

Figure 3.15.3. Miramar College Annual Certificates 30 to 59 Units by Ethnicity

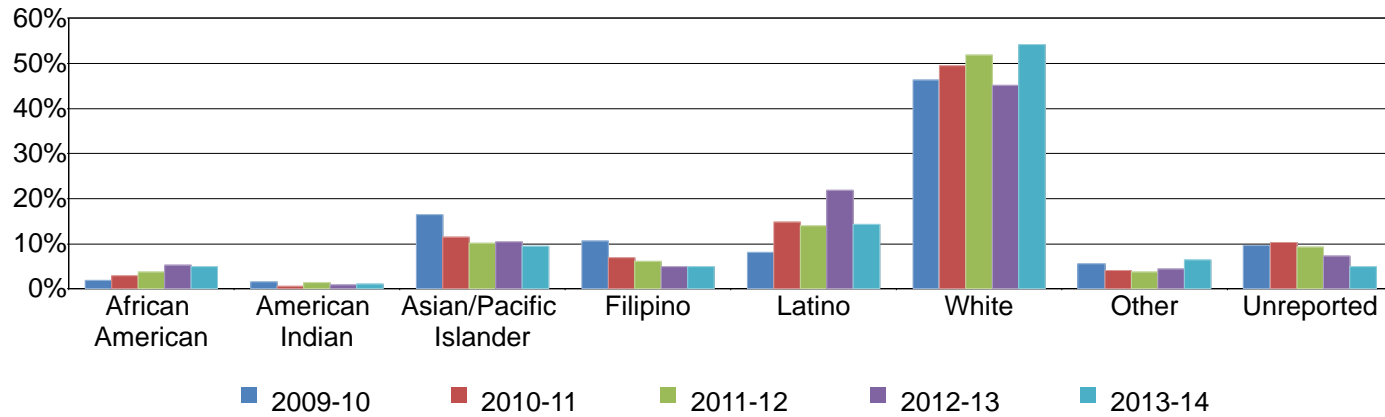
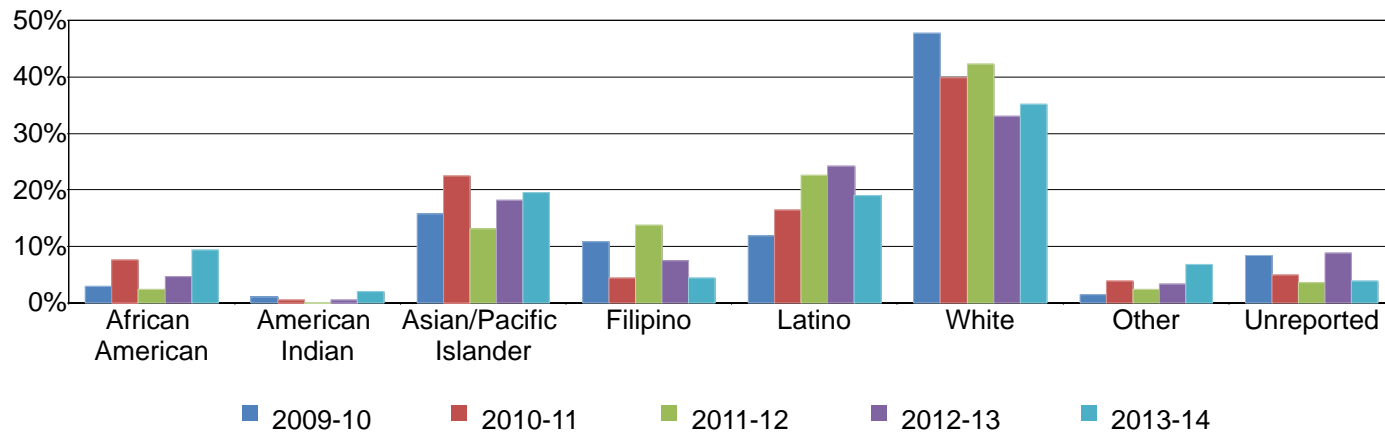


Figure 3.15.4. Miramar College Annual Certificates 29 or Fewer Units by Ethnicity



# Miramar College Fact Book 2014

Table 3.15. Miramar College Annual Awards Conferred by Ethnicity

		2009-10		2010-11		2011-12		2012-13		2013-14		% Change 09/10-13/14	College Average 09/10-13/14	All Colleges Average 09/10-13/14
AA/AS Degree	African American	23	4%	22	4%	16	3%	14	2%	25	5%	9%	4%	7%
	American Indian	7	1%	3	1%	4	1%	6	1%	3	1%	-57%	1%	1%
	Asian/Pacific Islander	86	15%	108	19%	110	18%	133	22%	77	15%	-10%	18%	13%
	Filipino	71	12%	62	11%	77	13%	56	9%	56	11%	-21%	11%	6%
	Latino	70	12%	81	14%	79	13%	106	18%	94	19%	34%	15%	24%
	White	238	41%	242	42%	230	39%	225	37%	207	41%	-13%	40%	37%
	Other	34	6%	24	4%	34	6%	31	5%	25	5%	-26%	5%	4%
	Unreported	50	9%	32	6%	47	8%	30	5%	19	4%	-62%	6%	6%
	<b>Total</b>	<b>579</b>	<b>100%</b>	<b>574</b>	<b>100%</b>	<b>597</b>	<b>100%</b>	<b>601</b>	<b>100%</b>	<b>506</b>	<b>100%</b>	<b>-13%</b>	<b>100%</b>	<b>100%</b>
Certificate 60 or More Units	African American	0	0%	0	0%	1	6%	0	0%	1	11%	---	6%	7%
	Asian/Pacific Islander	0	0%	0	0%	2	13%	1	25%	0	0%	---	9%	9%
	Filipino	1	50%	0	0%	1	6%	0	0%	1	11%	0%	9%	11%
	Latino	0	0%	1	25%	1	6%	1	25%	2	22%	---	14%	16%
	White	0	0%	2	50%	9	56%	2	50%	4	44%	---	49%	45%
	Other	0	0%	0	0%	1	6%	0	0%	1	11%	---	6%	5%
	Unreported	1	50%	1	25%	1	6%	0	0%	0	0%	-100%	9%	7%
	<b>Total</b>	<b>2</b>	<b>100%</b>	<b>4</b>	<b>100%</b>	<b>16</b>	<b>100%</b>	<b>4</b>	<b>100%</b>	<b>9</b>	<b>100%</b>	<b>350%</b>	<b>100%</b>	<b>100%</b>

Source: SDCCD Information System

# Miramar College Fact Book 2014

Table 3.15. Miramar College Annual Awards Conferred by Ethnicity (continued)

		2009-10		2010-11		2011-12		2012-13		2013-14		% Change 09/10-13/14	College Average 09/10-13/14	All Colleges Average 09/10-13/14
Certificate 30 to 59 Units	African American	5	2%	5	3%	8	4%	13	5%	10	5%	100%	4%	7%
	American Indian	4	1%	1	1%	3	1%	2	1%	2	1%	-50%	1%	1%
	Asian/Pacific Islander	45	17%	20	11%	22	10%	26	10%	19	9%	-58%	12%	11%
	Filipino	29	11%	12	7%	13	6%	12	5%	10	5%	-66%	7%	5%
	Latino	22	8%	26	15%	30	14%	54	22%	29	14%	32%	14%	23%
	White	126	46%	87	49%	112	52%	112	45%	110	54%	-13%	49%	42%
	Other	15	6%	7	4%	8	4%	11	4%	13	6%	-13%	5%	4%
	Unreported	26	10%	18	10%	20	9%	18	7%	10	5%	-62%	8%	7%
	<b>Total</b>	<b>272</b>	<b>100%</b>	<b>176</b>	<b>100%</b>	<b>216</b>	<b>100%</b>	<b>248</b>	<b>100%</b>	<b>203</b>	<b>100%</b>	<b>-25%</b>	<b>100%</b>	<b>100%</b>
Certificate 29 or Fewer Units	African American	6	3%	14	8%	4	2%	10	5%	19	9%	217%	5%	9%
	American Indian	2	1%	1	1%	0	0%	1	0%	4	2%	100%	1%	1%
	Asian/Pacific Islander	32	16%	41	22%	22	13%	39	18%	40	20%	25%	18%	13%
	Filipino	22	11%	8	4%	23	14%	16	7%	9	4%	-59%	8%	5%
	Latino	24	12%	30	16%	38	23%	52	24%	39	19%	63%	19%	26%
	White	97	48%	73	40%	71	42%	71	33%	72	35%	-26%	39%	38%
	Other	3	1%	7	4%	4	2%	7	3%	14	7%	367%	4%	4%
	Unreported	17	8%	9	5%	6	4%	19	9%	8	4%	-53%	6%	5%
	<b>Total</b>	<b>203</b>	<b>100%</b>	<b>183</b>	<b>100%</b>	<b>168</b>	<b>100%</b>	<b>215</b>	<b>100%</b>	<b>205</b>	<b>100%</b>	<b>1%</b>	<b>100%</b>	<b>100%</b>
<b>Grand Total</b>	<b>1,056</b>	<b>100%</b>	<b>937</b>	<b>100%</b>	<b>997</b>	<b>100%</b>	<b>1,068</b>	<b>100%</b>	<b>923</b>	<b>100%</b>	<b>-13%</b>	<b>100%</b>	<b>100%</b>	

Source: SDCCD Information System

# Miramar College Fact Book 2014

**Annual Awards Conferred by Age:** Approximately two thirds of the total number of associate degrees and half of the certificates awarded between 2009/10 and 2013/14 were to students between ages 18 and 29, on average. Students between ages 18 and 24 were overrepresented in the awards received at Miramar College when compared to the same age group within all colleges in the District. However, students ages 30 and 49 were underrepresented in the number of the awards received at Miramar College when compared to the same age group within all colleges in the District.

Figure 3.16.1. Miramar College Annual AA/AS Degrees by Age

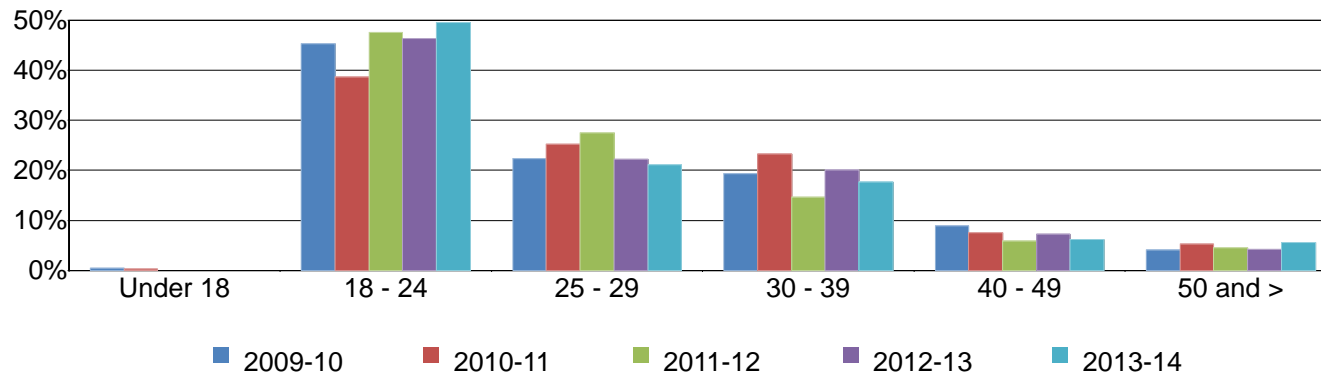
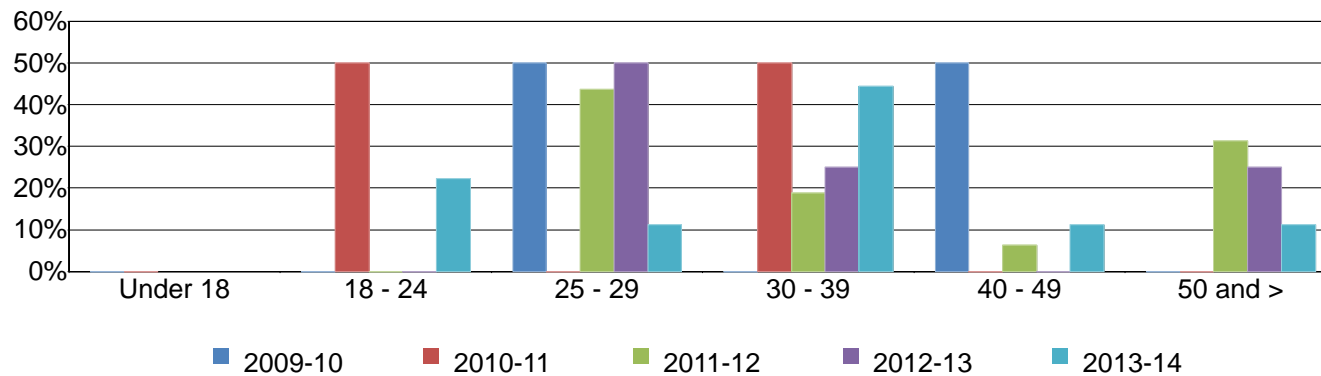


Figure 3.16.2. Miramar College Annual Certificates 60 or More Units by Age



# Miramar College Fact Book 2014

Figure 3.16.3. Miramar College Annual Certificates 30 to 59 Units by Age

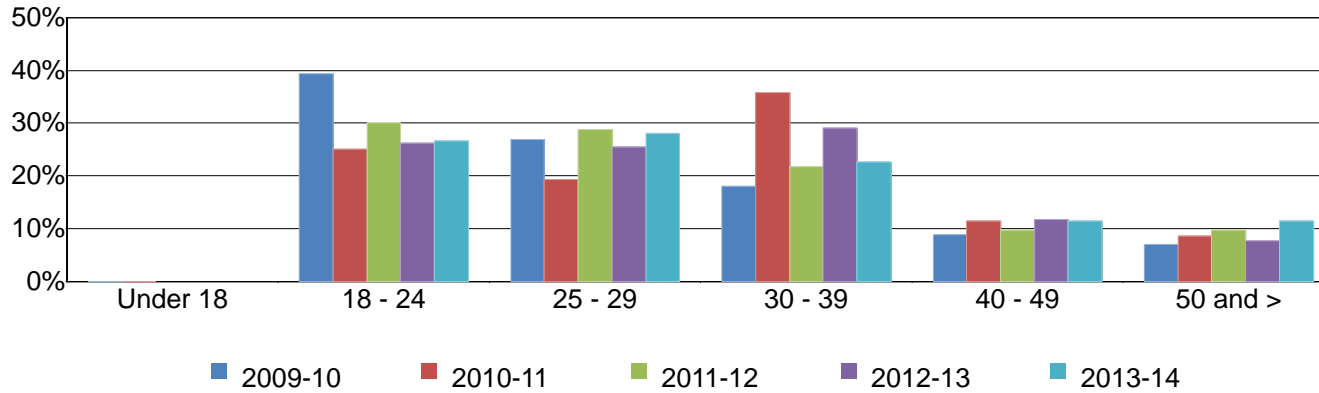
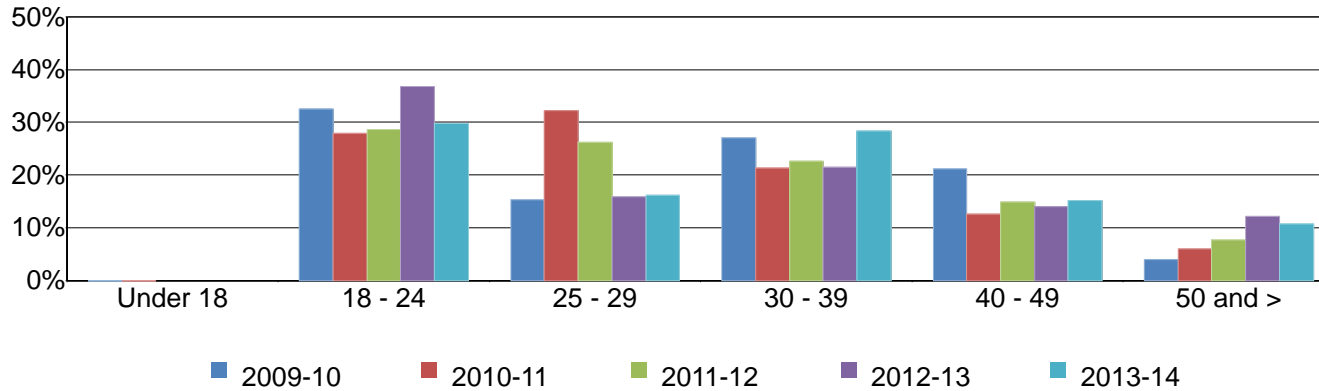


Figure 3.16.4. Miramar College Annual Certificates 29 or Fewer Units by Age



# Miramar College Fact Book 2014

Table 3.16. Miramar College Annual Awards Conferred by Age

		2009-10		2010-11		2011-12		2012-13		2013-14		% Change 09/10-13/14	College Average 09/10-13/14	All Colleges Average 09/10-13/14
AA/AS Degree	Under 18	2	0%	1	0%	0	0%	0	0%	0	0%	-100%	0%	0%
	18 - 24	262	45%	222	39%	284	48%	279	46%	251	50%	-4%	45%	39%
	25 - 29	129	22%	145	25%	164	27%	133	22%	107	21%	-17%	24%	27%
	30 - 39	112	19%	133	23%	87	15%	121	20%	89	18%	-21%	19%	21%
	40 - 49	51	9%	43	7%	35	6%	43	7%	31	6%	-39%	7%	8%
	50 and >	23	4%	30	5%	27	5%	25	4%	28	6%	22%	5%	5%
	<b>Total</b>	<b>579</b>	<b>100%</b>	<b>574</b>	<b>100%</b>	<b>597</b>	<b>100%</b>	<b>601</b>	<b>100%</b>	<b>506</b>	<b>100%</b>	<b>-13%</b>	<b>100%</b>	<b>100%</b>
Certificate 60 or More Units	18 - 24	0	0%	2	50%	0	0%	0	0%	2	22%	---	11%	9%
	25 - 29	1	50%	0	0%	7	44%	2	50%	1	11%	0%	31%	34%
	30 - 39	0	0%	2	50%	3	19%	1	25%	4	44%	---	29%	30%
	40 - 49	1	50%	0	0%	1	6%	0	0%	1	11%	0%	9%	9%
	50 and >	0	0%	0	0%	5	31%	1	25%	1	11%	---	20%	18%
	<b>Total</b>	<b>2</b>	<b>100%</b>	<b>4</b>	<b>100%</b>	<b>16</b>	<b>100%</b>	<b>4</b>	<b>100%</b>	<b>9</b>	<b>100%</b>	<b>350%</b>	<b>100%</b>	<b>100%</b>
Certificate 30 to 59 Units	18 - 24	107	39%	44	25%	65	30%	65	26%	54	27%	-50%	30%	27%
	25 - 29	73	27%	34	19%	62	29%	63	25%	57	28%	-22%	26%	25%
	30 - 39	49	18%	63	36%	47	22%	72	29%	46	23%	-6%	25%	24%
	40 - 49	24	9%	20	11%	21	10%	29	12%	23	11%	-4%	10%	14%
	50 and >	19	7%	15	9%	21	10%	19	8%	23	11%	21%	9%	10%
	<b>Total</b>	<b>272</b>	<b>100%</b>	<b>176</b>	<b>100%</b>	<b>216</b>	<b>100%</b>	<b>248</b>	<b>100%</b>	<b>203</b>	<b>100%</b>	<b>-25%</b>	<b>100%</b>	<b>100%</b>
Certificate 29 or Fewer Units	18 - 24	66	33%	51	28%	48	29%	79	37%	61	30%	-8%	31%	22%
	25 - 29	31	15%	59	32%	44	26%	34	16%	33	16%	6%	21%	23%
	30 - 39	55	27%	39	21%	38	23%	46	21%	58	28%	5%	24%	27%
	40 - 49	43	21%	23	13%	25	15%	30	14%	31	15%	-28%	16%	16%
	50 and >	8	4%	11	6%	13	8%	26	12%	22	11%	175%	8%	11%
	<b>Total</b>	<b>203</b>	<b>100%</b>	<b>183</b>	<b>100%</b>	<b>168</b>	<b>100%</b>	<b>215</b>	<b>100%</b>	<b>205</b>	<b>100%</b>	<b>1%</b>	<b>100%</b>	<b>100%</b>
<b>Grand Total</b>	<b>1,056</b>	<b>100%</b>	<b>937</b>	<b>100%</b>	<b>997</b>	<b>100%</b>	<b>1,068</b>	<b>100%</b>	<b>923</b>	<b>100%</b>	<b>-13%</b>	<b>100%</b>	<b>100%</b>	

Source: SDCCD Information System



# Miramar College Fact Book 2014

---

**Annual Transfer Volume:** The annual transfer volume for Miramar College increased 16%, from 641 in 2008/09 to 745 in 2012/13.

Figure 3.17. Miramar College Overall Annual Transfers

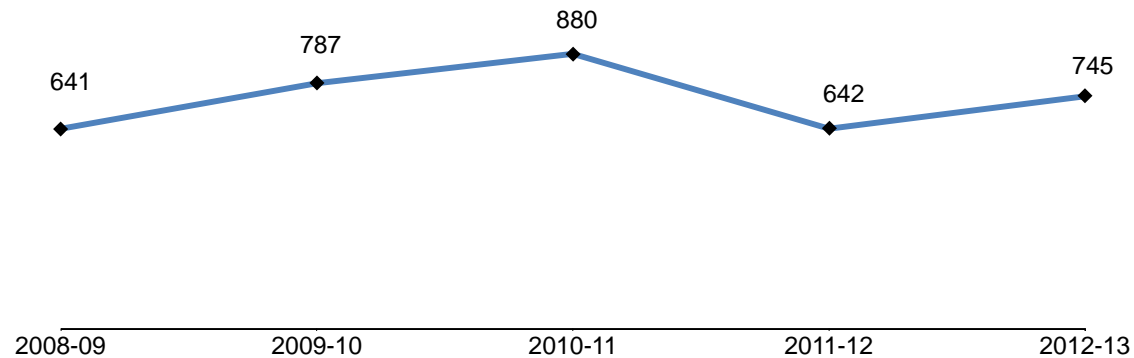


Table 3.17. Miramar College Overall Annual Transfers

	2008-09	2009-10	2010-11	2011-12	2012-13	% Change 08/09-12/13
<b>Total</b>	641	787	880	642	745	16%

Source: National Student Clearinghouse

# Miramar College Fact Book 2014

**Annual Transfer Volume by Gender:** Between 2008/09 and 2012/13, female students (50%) had a comparable transfer volume, on average, to their male student counterpart (50%). The transfer volume for female students decreased 1%, while the transfer volume for male students increased 36% between 2008/09 and 2012/13.

Figure 3.18. Miramar College Annual Transfers by Gender

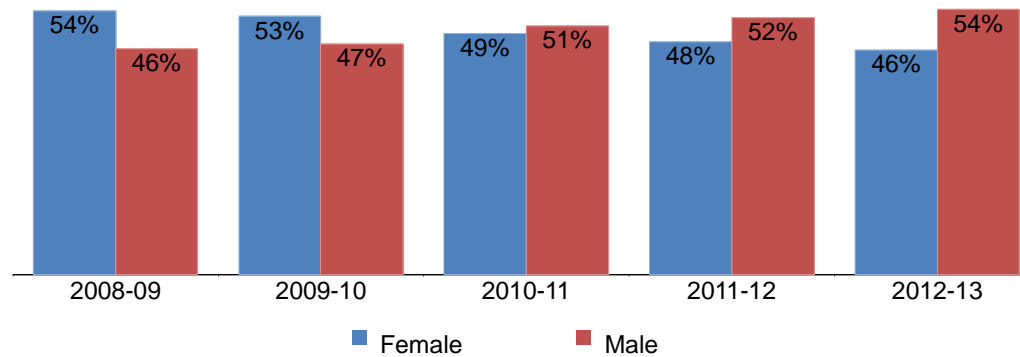


Table 3.18. Miramar College Annual Transfers by Gender

	2008-09		2009-10		2010-11		2011-12		2012-13		% Change 08/09-12/13	College Average 08/09-12/13	All Colleges Average 08/09-12/13
Female	345	54%	415	53%	433	49%	305	48%	341	46%	-1%	50%	52%
Male	296	46%	371	47%	447	51%	337	52%	404	54%	36%	50%	48%
Unreported	0	0%	1	0%	0	0%	0	0%	0	0%	---	0%	0%
<b>Total</b>	<b>641</b>	<b>100%</b>	<b>787</b>	<b>100%</b>	<b>880</b>	<b>100%</b>	<b>642</b>	<b>100%</b>	<b>745</b>	<b>100%</b>	<b>16%</b>	<b>100%</b>	<b>100%</b>

Source: National Student Clearinghouse

# Miramar College Fact Book 2014

**Annual Transfer Volume by Ethnicity:** Among those who transferred from Miramar College, 42% were White students, on average. Asian/Pacific Islanders students accounted for 18% of the transfer volume, and Latino students accounted for 13% of the transfer volume. Most of the ethnic groups displayed an increased trend in transfer volume, with the exception of American Indian students (75% decrease).

Figure 3.19. Miramar College Annual Transfers by Ethnicity

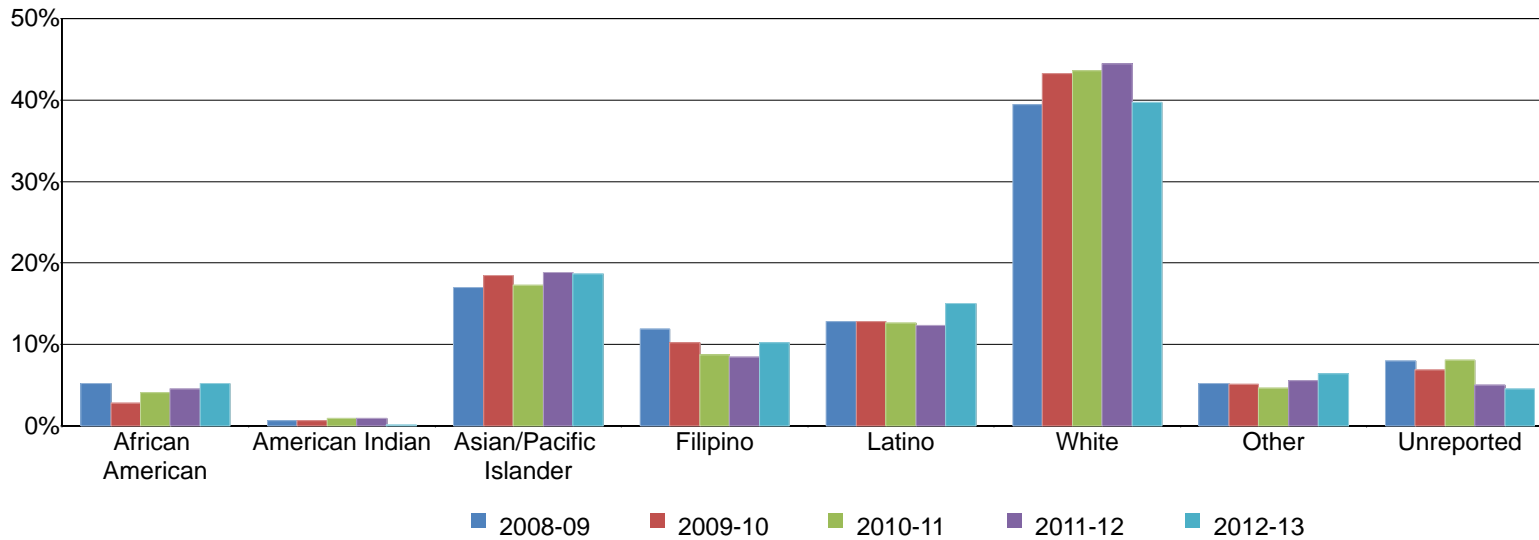


Table 3.19. Miramar College Annual Transfers by Ethnicity

	2008-09		2009-10		2010-11		2011-12		2012-13		% Change 08/09-12/13	College Average 08/09-12/13	All Colleges Average 08/09-12/13
African American	33	5%	22	3%	36	4%	29	5%	39	5%	18%	4%	7%
American Indian	4	1%	5	1%	8	1%	6	1%	1	0%	-75%	1%	1%
Asian/Pacific Islander	109	17%	145	18%	152	17%	121	19%	139	19%	28%	18%	12%
Filipino	76	12%	80	10%	77	9%	54	8%	76	10%	0%	10%	5%
Latino	82	13%	101	13%	111	13%	79	12%	112	15%	37%	13%	19%
White	253	39%	340	43%	384	44%	285	44%	296	40%	17%	42%	44%
Other	33	5%	40	5%	41	5%	36	6%	48	6%	45%	5%	5%
Unreported	51	8%	54	7%	71	8%	32	5%	34	5%	-33%	7%	8%
<b>Total</b>	<b>641</b>	<b>100%</b>	<b>787</b>	<b>100%</b>	<b>880</b>	<b>100%</b>	<b>642</b>	<b>100%</b>	<b>745</b>	<b>100%</b>	<b>16%</b>	<b>100%</b>	<b>100%</b>

Source: National Student Clearinghouse

# Miramar College Fact Book 2014

**Annual Transfer Volume by Age:** The age groups with the highest transfer volume, on average, were students between ages 18 and 24 (55%), students between ages 25 and 29 (27%), and students between ages 30 and 39 (13%). Most of the age groups displayed an increased trend in transfer volume.

Figure 3.20. Miramar College Annual Transfers by Age

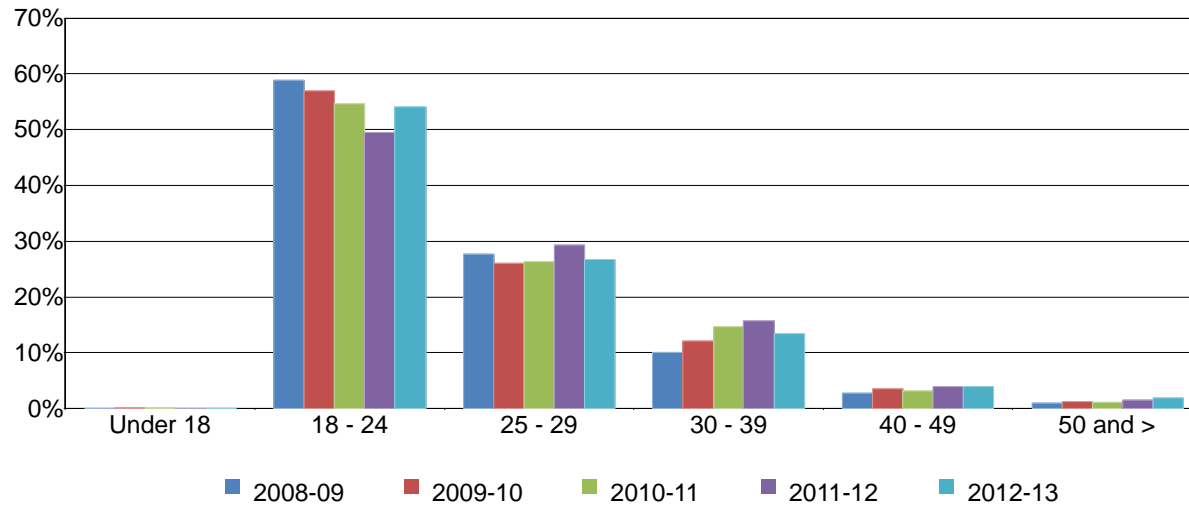


Table 3.20. Miramar College Annual Transfers by Age

	2008-09		2009-10		2010-11		2011-12		2012-13		% Change 08/09-12/13	College Average 08/09-12/13	All Colleges Average 08/09-12/13
Under 18	0	0%	1	0%	1	0%	0	0%	0	0%	---	0%	0%
18 - 24	377	59%	448	57%	481	55%	318	50%	403	54%	7%	55%	54%
25 - 29	177	28%	205	26%	231	26%	188	29%	199	27%	12%	27%	27%
30 - 39	64	10%	95	12%	129	15%	101	16%	100	13%	56%	13%	14%
40 - 49	17	3%	28	4%	28	3%	25	4%	29	4%	71%	3%	4%
50 and >	6	1%	10	1%	10	1%	10	2%	14	2%	133%	1%	1%
<b>Total</b>	<b>641</b>	<b>100%</b>	<b>787</b>	<b>100%</b>	<b>880</b>	<b>100%</b>	<b>642</b>	<b>100%</b>	<b>745</b>	<b>100%</b>	<b>16%</b>	<b>100%</b>	<b>100%</b>

Source: National Student Clearinghouse

# Miramar College Fact Book 2014

**Annual Transfer Volume by CSU-UC/Private (In-State)/Out-of-State:** On average, 43% of the Miramar College transfer volume were students who transferred into the California State University system (CSU), followed by students who transferred to out-of-state institutions (23%), University of California system (UC) (18%), and then in-state private institutions (16%). Students who transferred from Miramar College to an in-state private institution increased the most in transfer volume (62%), from 84 in 2008/09 to 136 in 2012/13, while students who transferred to the UC system declined in transfer volume (7%).

Figure 3.21. Miramar College Annual Transfers by CSU-UC/Private (In-State)/Out-of-State

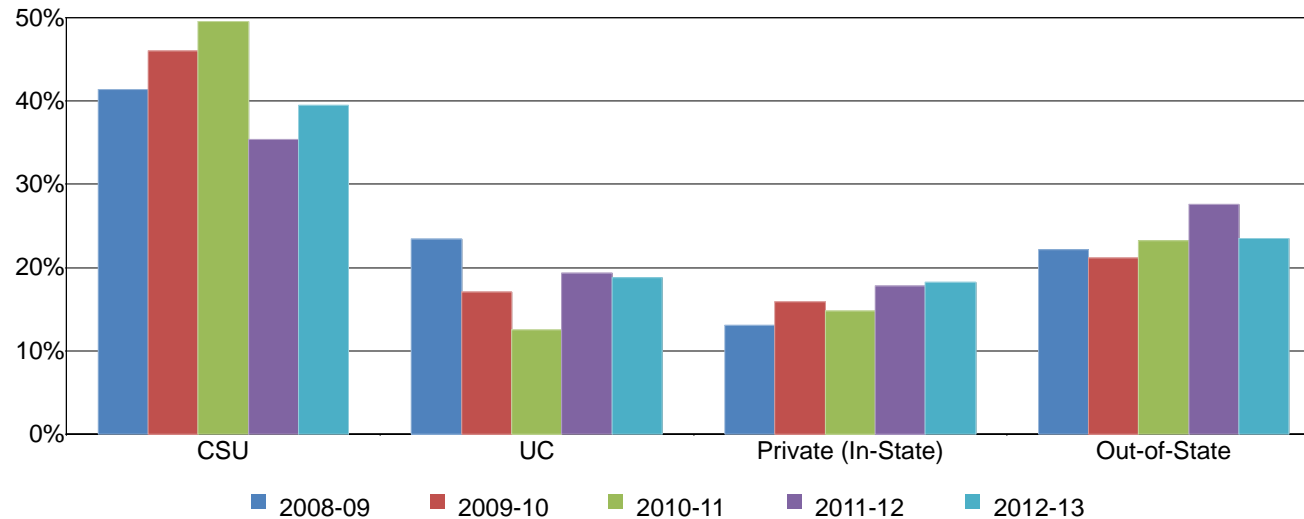


Table 3.21. Miramar College Annual Transfers by CSU-UC/Private (In-State)/Out-of-State

	2008-09		2009-10		2010-11		2011-12		2012-13		% Change 08/09-12/13	College Average 08/09-12/13	All Colleges Average 08/09-12/13
CSU	265	41%	362	46%	436	50%	227	35%	294	39%	11%	43%	43%
UC	150	23%	134	17%	110	13%	124	19%	140	19%	-7%	18%	17%
Private (In-State)	84	13%	125	16%	130	15%	114	18%	136	18%	62%	16%	17%
Out-of-State	142	22%	166	21%	204	23%	177	28%	175	23%	23%	23%	23%
<b>Total</b>	<b>641</b>	<b>100%</b>	<b>787</b>	<b>100%</b>	<b>880</b>	<b>100%</b>	<b>642</b>	<b>100%</b>	<b>745</b>	<b>100%</b>	<b>16%</b>	<b>100%</b>	<b>100%</b>

Source: National Student Clearinghouse

Note. Out-of-State included both public and private 4-year institutions.

# Miramar College Fact Book 2014

**Annual Transfer Volume by CSU/UC:** Of the total Miramar College transfer volume between 2008/09 and 2012/13, 61% of students transferred into either the California State University (CSU) or University of California (UC) system, on average (43% & 18%, respectively; see Table 3.21). Of the total number of students who transferred to CSU or UC systems, the majority of students went to CSU (71%) and more than one quarter went to UC (29%), on average. There was an increased trend in the number of students who transferred from Miramar College to the CSU system (11%), while transfers to the UC system showed a decreased trend (7%) between 2008/09 and 2012/13.

Figure 3.22. Miramar College Annual Transfers by CSU/UC

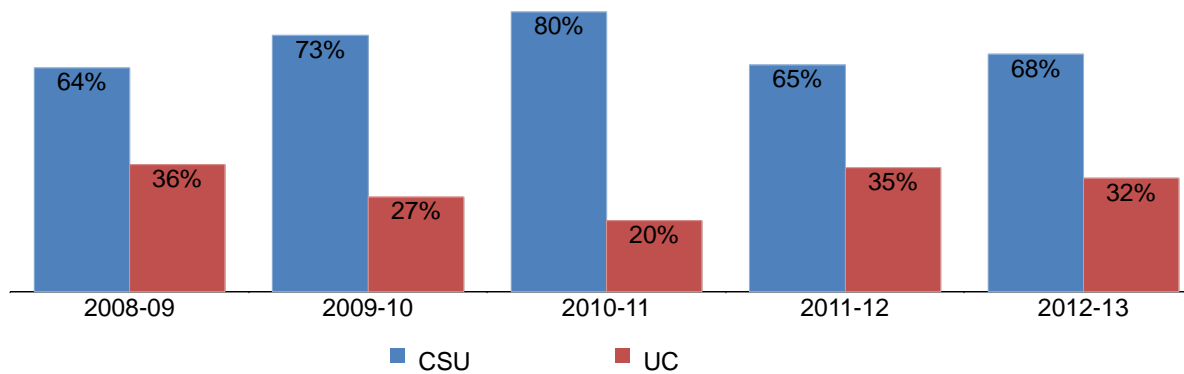


Table 3.22. Miramar College Annual Transfers by CSU/UC

	2008-09		2009-10		2010-11		2011-12		2012-13		% Change 08/09-12/13	College Average 08/09-12/13	All Colleges Average 08/09-12/13
CSU	265	64%	362	73%	436	80%	227	65%	294	68%	11%	71%	72%
UC	150	36%	134	27%	110	20%	124	35%	140	32%	-7%	29%	28%
<b>Total</b>	<b>415</b>	<b>100%</b>	<b>496</b>	<b>100%</b>	<b>546</b>	<b>100%</b>	<b>351</b>	<b>100%</b>	<b>434</b>	<b>100%</b>	<b>5%</b>	<b>100%</b>	<b>100%</b>

Source: National Student Clearinghouse

# Miramar College Fact Book 2014

**Annual Transfer Volume by Institution Type:** Of those students who transferred from Miramar College, on average, 28% transferred to a private institution and 72% transferred to a public institution. Transfers to private institutions displayed a greater increase compared to public institutions (47% & 6%, respectively) between 2008/09 and 2012/13.

Figure 3.23. Miramar College Annual Transfers by Institution Type

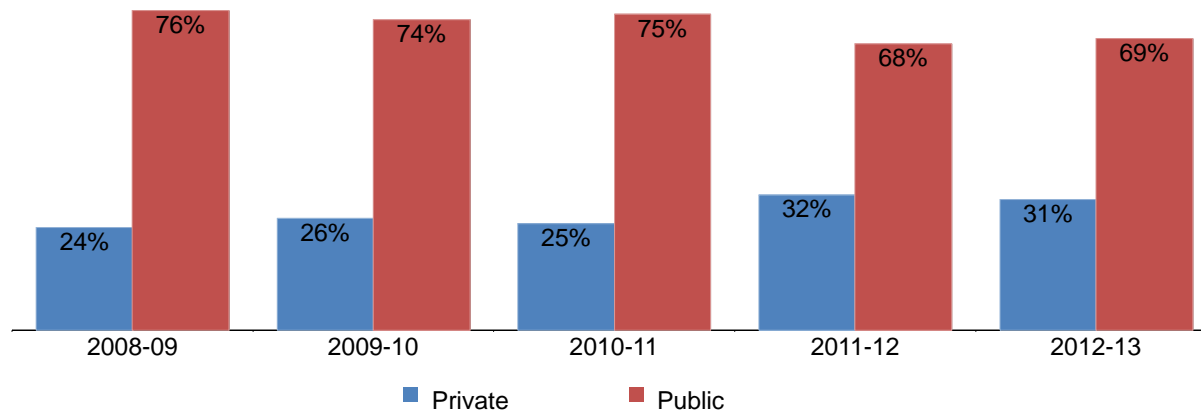


Table 3.23. Miramar College Annual Transfers by Institution Type

	2008-09		2009-10		2010-11		2011-12		2012-13		% Change 08/09-12/13	College Average 08/09-12/13	All Colleges Average 08/09-12/13
Private	156	24%	208	26%	222	25%	206	32%	230	31%	47%	28%	29%
Public	485	76%	579	74%	658	75%	436	68%	515	69%	6%	72%	71%
<b>Total</b>	<b>641</b>	<b>100%</b>	<b>787</b>	<b>100%</b>	<b>880</b>	<b>100%</b>	<b>642</b>	<b>100%</b>	<b>745</b>	<b>100%</b>	<b>16%</b>	<b>100%</b>	<b>100%</b>

Source: National Student Clearinghouse

Note. Public and Private included both Out-of-State and In-State 4-year institutions.

**Section IV**  
**Productivity and Efficiency**



# Miramar College Fact Book 2014

---

This section of the Fact Book contains information on productivity and efficiency measures. The following describes in detail each of the measures:

- 1) FTES. The first measure reported in this section is a measure of productivity. FTES is the total number of full-time equivalent students enrolled. (Includes non-residents. Excludes non-state supported, cancelled, and tutoring classes.) F-Factor is included when reported annually.
- 2) Enrollments. The second measure in this section of the report is also a measure of productivity. Enrollments are the number of seats enrolled, or duplicated headcount, based on official census. Drops, never attends, cancelled, and tutoring classes are excluded, as well as year-long summer in-service classes at Miramar.
- 3) Fill Rates. The third measure reported in this section is a measure of efficiency. Fill rates are the enrollment divided by the course enrollment capacity as set in the curriculum outline. Apprenticeship, in-service, cancelled, tutoring classes, and classes with a capacity of 0 or 1 are excluded.
- 4) Load. The fourth measure reported in this section is a measure of efficiency. Load is the ratio of Weekly Student Contact Hours (WSCH) to Full-time Equivalent Faculty (FTEF). Miramar College excludes all in-service classes. Tutoring, positive attendance, and cancelled sections are excluded.

# Miramar College Fact Book 2014

**Annual Resident FTES:** Miramar College increased 7% in resident FTES, from 7,111 FTES in 2009/10 to 7,606 FTES in 2013/14. Resident credit FTES showed a 7% increase between 2009/10 and 2013/14, while resident noncredit FTES increased 34% between 2009/10 and 2013/14.

Figure 4.1.1 Miramar College Annual Resident FTES

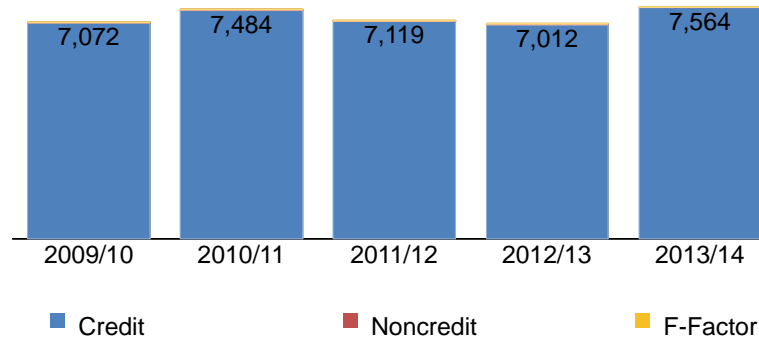


Table 4.1.1 Miramar College Annual Resident FTES

	2009/10	2010/11	2011/12	2012/13	2013/14
Credit	7,071.54	7,483.95	7,118.81	7,011.99	7,564.41
Noncredit	14.26	11.78	9.95	15.04	19.05
F-Factor	24.77	22.81	30.29	21.62	22.87
<b>Total</b>	<b>7,110.57</b>	<b>7,518.54</b>	<b>7,159.05</b>	<b>7,048.65</b>	<b>7,606.33</b>

Source: SDCCD Information System

# Miramar College Fact Book 2014

---

**Annual Nonresident FTES:** Nonresident FTES increased 17%, from 116 FTES in 2009/10 to 135 FTES in 2013/14. While nonresident credit FTES increased 18%, nonresident noncredit FTES decreased 55% between 2009/10 and 2013/14.

Figure 4.1.2 Miramar College Annual Nonresident FTES

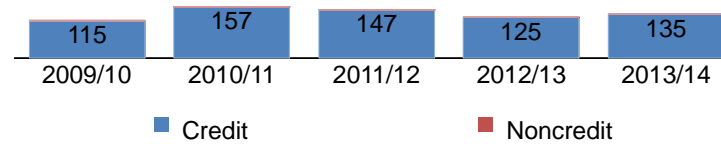


Table 4.1.2 Miramar College Annual Nonresident FTES

	2009/10	2010/11	2011/12	2012/13	2013/14
Credit	114.50	157.43	147.29	125.04	134.78
Noncredit	1.14	0.53	0.82	0.52	0.51
<b>Total</b>	<b>115.64</b>	<b>157.96</b>	<b>148.11</b>	<b>125.56</b>	<b>135.29</b>

Source: SDCCD Information System

# Miramar College Fact Book 2014

**Annual Overall FTES:** Miramar College showed a 7% increase in total FTES, from 7,226 FTES in 2009/10 to 7,742 FTES in 2013/14. Credit FTES increased 7%, and noncredit FTES increased 27% between 2009/10 and 2013/14.

Figure 4.1.3 Miramar College Resident & Nonresident Annual Overall FTES

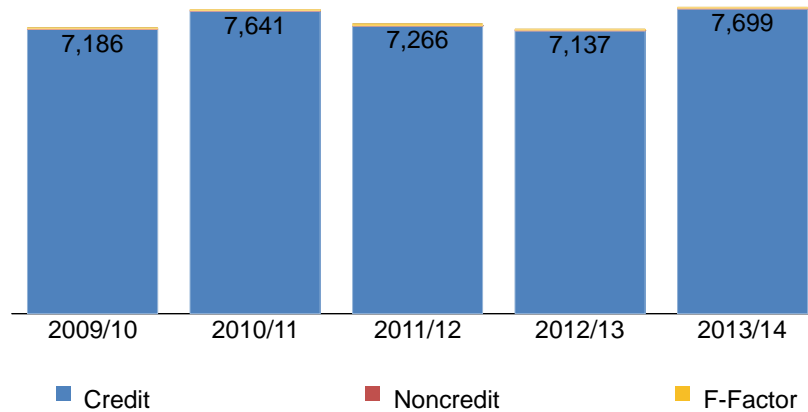


Table 4.1.3 Miramar College Resident & Nonresident Annual Overall FTES

	2009/10	2010/11	2011/12	2012/13	2013/14
Credit	7,186.04	7,641.38	7,266.10	7,137.03	7,699.19
Noncredit	15.40	12.31	10.77	15.56	19.56
F-Factor	24.77	22.81	30.29	21.62	22.87
<b>Total</b>	<b>7,226.21</b>	<b>7,676.49</b>	<b>7,307.16</b>	<b>7,174.21</b>	<b>7,741.62</b>

Source: SDCCD Information System

# Miramar College Fact Book 2014

**Enrollments:** The enrollment trend for the online mode of instruction decreased overall for summer and spring terms (100% & 3%, respectively), and increased for the fall (4%) term between 2009/10 and 2013/14. The on campus mode of instruction enrollment decreased for summer (89%), but increased for fall (8%) and spring (10%) terms between 2009/10 and 2013/14.

Figure 4.2.1 Miramar College Enrollments (Summer)

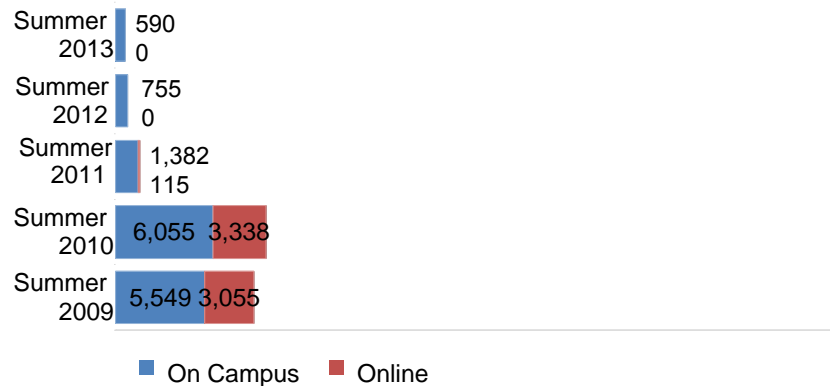


Figure 4.2.2 Miramar College Enrollments (Fall)

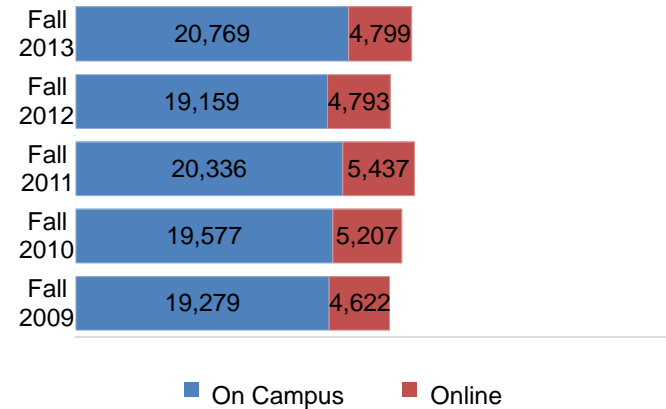
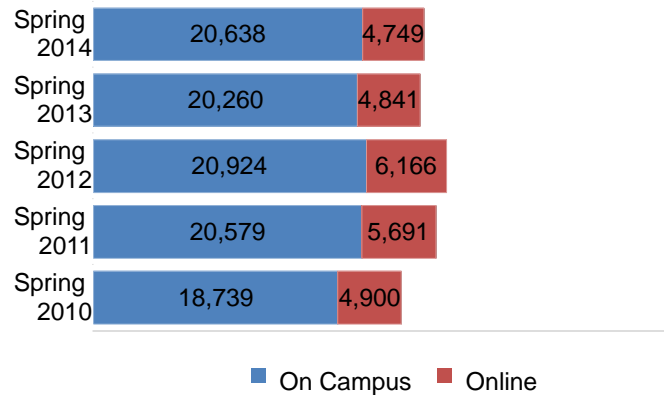


Figure 4.2.3. Miramar College Enrollments (Spring)



# Miramar College Fact Book 2014

**Fill Rates:** The overall fill rates for Miramar College were the highest for the fall and spring terms, on average, when compared to the summer term (97%, 95%, and 93%, respectively) between 2009/10 and 2013/14. Overall fill rates for all colleges in the District were the highest in the fall (92%) and lower in the summer and spring terms (89% each). On average, fill rates were the highest for the on campus mode of instruction across the summer, fall, and spring terms (95%, 99%, & 95%, respectively) compared to the online mode of instruction (90%, 93%, & 92%, respectively). Miramar College had overall higher fill rates, on average, compared to the fill rates of all colleges in the District across all modes of instruction.

Figure 4.3.1. Miramar College Fill Rates (Summer)

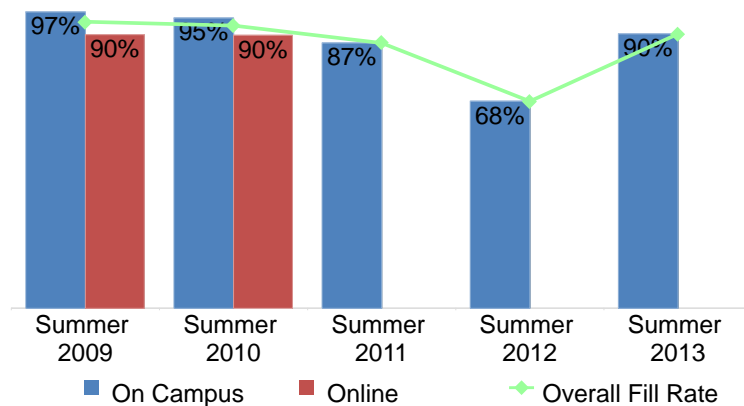


Figure 4.3.2. Miramar College Fill Rates (Fall)

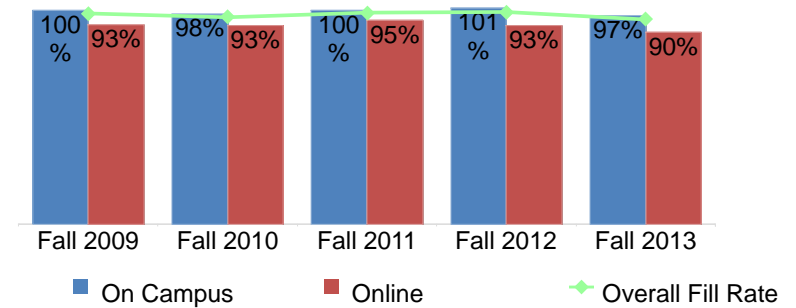
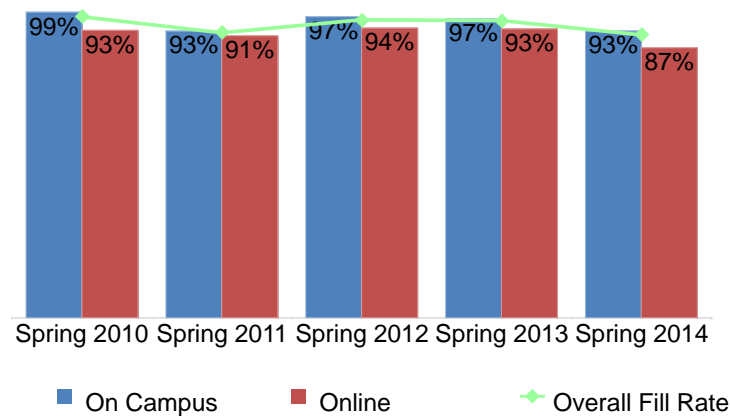


Figure 4.3.3. Miramar College Fill Rates (Spring)



# Miramar College Fact Book 2014

Table 4.2. Miramar College Enrollments and Fill Rates

	On Campus			Online			Miramar College Total			All Colleges Total		
	Enrollment	Capacity	Fill Rate	Enrollment	Capacity	Fill Rate	Enrollment	Capacity	Fill Rate	Enrollment	Capacity	Fill Rate
Summer 2009	5,549	6,800	97%	3,055	3,401	90%	8,604	10,201	94%	39,262	45,761	88%
Summer 2010	6,055	7,319	95%	3,338	3,723	90%	9,393	11,042	93%	35,729	39,947	91%
Summer 2011	1,382	2,868	87%	115	0	---	1,497	2,868	87%	3,806	3,146	87%
Summer 2012	755	2,806	68%	0	0	---	755	2,806	68%	3,587	2,860	70%
Summer 2013	590	1,955	90%	0	0	---	590	1,955	90%	3,102	2,061	81%
<b>Total/5-Yr Avg</b>	<b>14,331</b>	<b>21,748</b>	<b>95%</b>	<b>6,508</b>	<b>7,124</b>	<b>90%</b>	<b>20,839</b>	<b>28,872</b>	<b>93%</b>	<b>85,486</b>	<b>93,775</b>	<b>89%</b>

	On Campus			Online			Miramar College Total			All Colleges Total		
	Enrollment	Capacity	Fill Rate	Enrollment	Capacity	Fill Rate	Enrollment	Capacity	Fill Rate	Enrollment	Capacity	Fill Rate
Fall 2009	19,279	19,505	100%	4,622	4,947	93%	23,901	24,452	98%	123,429	133,381	92%
Fall 2010	19,577	20,138	98%	5,207	5,619	93%	24,784	25,757	97%	131,415	141,921	92%
Fall 2011	20,336	20,217	100%	5,437	5,725	95%	25,773	25,942	99%	131,166	138,385	93%
Fall 2012	19,159	18,922	101%	4,793	5,174	93%	23,952	24,096	99%	125,198	130,635	94%
Fall 2013	20,769	21,217	97%	4,799	5,362	90%	25,568	26,579	95%	126,840	139,548	89%
<b>Total/5-Yr Avg</b>	<b>99,120</b>	<b>99,999</b>	<b>99%</b>	<b>24,858</b>	<b>26,827</b>	<b>93%</b>	<b>123,978</b>	<b>126,826</b>	<b>97%</b>	<b>638,048</b>	<b>683,870</b>	<b>92%</b>

	On Campus			Online			Miramar College Total			All Colleges Total		
	Enrollment	Capacity	Fill Rate	Enrollment	Capacity	Fill Rate	Enrollment	Capacity	Fill Rate	Enrollment	Capacity	Fill Rate
Spring 2010	18,739	18,941	99%	4,900	5,280	93%	23,639	24,221	97%	123,527	132,520	93%
Spring 2011	20,579	22,062	93%	5,691	6,235	91%	26,270	28,297	92%	133,643	147,340	90%
Spring 2012	20,924	21,606	97%	6,166	6,582	94%	27,090	28,188	96%	130,393	141,973	90%
Spring 2013	20,260	21,119	97%	4,841	5,181	93%	25,101	26,300	96%	126,807	139,170	89%
Spring 2014	20,638	22,075	93%	4,749	5,437	87%	25,387	27,512	92%	124,305	143,062	85%
<b>Total/5-Yr Avg</b>	<b>101,140</b>	<b>105,803</b>	<b>95%</b>	<b>26,347</b>	<b>28,715</b>	<b>92%</b>	<b>127,487</b>	<b>134,518</b>	<b>95%</b>	<b>638,675</b>	<b>704,065</b>	<b>89%</b>

Source: SDCCD Information System

Note. Using the figures in the tables will give approximate fill rates since additional parameters are used to calculate the fill rate.

# Miramar College Fact Book 2014

**Load:** The Load value for Fall 2011 was greater than the Load values for the other four fall terms. Similarly, the Load value for Spring 2010 was greater than the Load values for the other four spring terms. Many of the Miramar College Load values were lower compared to the all colleges in the District Load values across the fall and spring terms. The statewide benchmark for Load is 525 for a 17.5 week semester. SDCCD has set an internal benchmark of 557, which is commensurate to its 16.5 week semester.

Figure 4.4.1. Miramar College Load (Fall)



Figure 4.4.2. Miramar College Load (Spring)



Table 4.4. Miramar College Load

	Miramar College Load	All Colleges Load
Fall 2009	567	575
Fall 2010	571	574
Fall 2011	593	584
Fall 2012	581	583
Fall 2013	560	558
Spring 2010	577	583
Spring 2011	537	554
Spring 2012	575	576
Spring 2013	571	562
Spring 2014	539	527

Source: SDCCD Information System



## **Section V Human Resources**

# Miramar College Fact Book 2014

---

This section of the Fact Book contains information on the number and classification of employees during the Fall 2013 semester. The information is reported as follows:

- 1) Gender
- 2) Ethnicity
- 3) Employment Type

# Miramar College Fact Book 2014

**Fall 2013 Employee Breakdown:** There were a total of 795 employees working at Miramar College during Fall 2013. The largest group, over half of the Miramar employees, comprised adjunct faculty (54%), followed by non-academic hourly (21%), contract faculty (13%), and classified staff (9%). Supervisory staff and management constituted the smallest proportions of Miramar employees at 3% and 1%, respectively.

The ethnic breakdown showed that White employees comprised 57% of the total employee population, followed by Asian employees (16%), and Latino employees (11%). Among classified staff, White employees comprised just less than one third (32%) of the employees and made up more than two thirds of the teaching faculty positions (60% for contract and 69% for adjunct) compared to all other ethnic groups. White employees constituted more than one sixth of the management (18%) positions and more than half of the supervisory (52%) positions. Asian employees comprised approximately one fifth (18%) of the management positions and one quarter (29%) of the supervisory positions. Latino employees comprised more than one third (36%) of management positions and 5% of the supervisory positions. African American employees constituted 9% of the management positions and 5% of the supervisory positions.

Figure 5.1. Miramar College Fall 2013 Employees by Employment Type

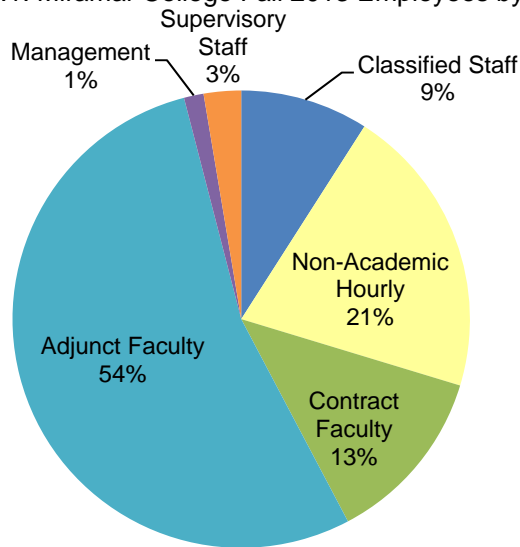
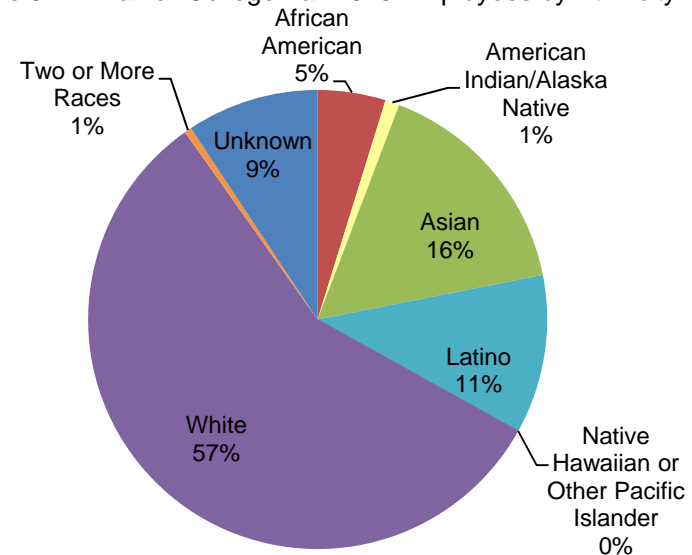


Figure 5.2. Miramar College Fall 2013 Employees by Ethnicity



# Miramar College Fact Book 2014

Table 5.1. Miramar College Fall 2013 Employees by Ethnicity

	African American		American Indian/ Alaska Native		Asian		Latino		Native Hawaiian or Other Pacific Islander		White		Two or More Races		Unreported		Total
<b>Total Employees:</b>	38	5%	8	1%	128	16%	89	11%	0	0%	454	57%	4	1%	74	9%	795
Female:	20	5%	3	1%	68	19%	40	11%	0	0%	203	56%	4	1%	27	7%	365
Male:	18	4%	5	1%	60	14%	49	11%	0	0%	251	58%	0	0%	47	11%	430
<b>Classified Staff :</b>	7	10%	0	0%	26	36%	10	14%	0	0%	23	32%	0	0%	6	8%	72
Female:	7	15%	0	0%	15	33%	7	15%	0	0%	15	33%	0	0%	2	4%	46
Male:	0	0%	0	0%	11	42%	3	12%	0	0%	8	31%	0	0%	4	15%	26
<b>Non-Academic Hourly:</b>	11	7%	3	2%	51	31%	21	13%	0	0%	65	40%	1	1%	12	7%	164
Female:	5	5%	3	3%	31	30%	13	13%	0	0%	42	41%	1	1%	8	8%	103
Male:	6	10%	0	0%	20	33%	8	13%	0	0%	23	38%	0	0%	4	7%	61
<b>Contract Faculty:</b>	4	4%	1	1%	10	10%	11	11%	0	0%	60	60%	0	0%	14	14%	100
Female:	0	0%	0	0%	4	10%	5	12%	0	0%	27	66%	0	0%	5	12%	41
Male:	4	7%	1	2%	6	10%	6	10%	0	0%	33	56%	0	0%	9	15%	59
<b>Adjunct Faculty:</b>	14	3%	4	1%	33	8%	42	10%	0	0%	293	69%	3	1%	38	9%	427
Female:	7	4%	0	0%	14	9%	11	7%	0	0%	112	71%	3	2%	10	6%	157
Male:	7	3%	4	1%	19	7%	31	11%	0	0%	181	67%	0	0%	28	10%	270
<b>Management:</b>	1	9%	0	0%	2	18%	4	36%	0	0%	2	18%	0	0%	2	18%	11
Female:	0	0%	0	0%	2	40%	3	60%	0	0%	0	0%	0	0%	0	0%	5
Male:	1	17%	0	0%	0	0%	1	17%	0	0%	2	33%	0	0%	2	33%	6
<b>Supervisory Staff:</b>	1	5%	0	0%	6	29%	1	5%	0	0%	11	52%	0	0%	2	10%	21
Female:	1	8%	0	0%	2	15%	1	8%	0	0%	7	54%	0	0%	2	15%	13
Male:	0	0%	0	0%	4	50%	0	0%	0	0%	4	50%	0	0%	0	0%	8

Source: SDCCD Information System

Table 5.2. Miramar College Employees by Gender and Employment Status

Gender		Employment Status	
Female	46%	Full-Time/Contract	26%
Male	54%	Hourly/Adjunct	74%

Source: SDCCD Information System