

2014



# Fact Book

## San Diego Community College District



*Prepared by:*  
Office of Institutional Research and Planning  
August 2014

# SDCCD Fact Book 2014

---

Overview & Mission .....	1	Annual Retention Rates	
<b>Section I. Headcount and Student Characteristics</b> .....	3	Overall .....	37
Section Overview .....	4	By Gender.....	38
Overall .....	5	By Ethnicity.....	39
By Gender.....	6	By Age.....	40
By Ethnicity.....	7	Annual GPA	
By Age.....	8	Overall .....	41
By Enrollment Status .....	9	By Gender.....	42
By Educational Objective .....	10	By Ethnicity .....	43
By Primary Language.....	12	By Age.....	44
By Prior Education Level .....	13	Annual Awards Conferred	
By Service Area of Residence .....	14	Overall .....	45
By First Generation .....	15	By Gender.....	46
By Residency.....	16	By Ethnicity.....	49
By DSPS .....	17	By Age.....	56
By EOPS.....	18	Annual Transfer	
By Day, Evening, & Online Status .....	19	Overall .....	62
By Military Status.....	20	By Gender.....	63
By Units Attempted by Units Earned .....	21	By Ethnicity.....	64
<b>Section II. Persistence Rates</b> .....	23	By Age.....	65
Section Overview .....	24	By CSU-UC/Private (In-state)/Out-of-State .....	66
Overall .....	25	By CSU/UC.....	67
By Gender.....	26	By Institution Type [Private vs. Public] .....	68
By Ethnicity.....	27	<b>Section IV. Productivity and Efficiency</b> .....	69
By Age.....	29	Section Overview .....	70
<b>Section III. Student Completion</b> .....	31	FTES (Resident, Nonresident, and Overall) .....	71
Section Overview .....	32	Enrollments (Overall, Online, and On Campus) .....	74
Annual Success Rates		Fill Rates .....	76
Overall .....	33	Load .....	78
By Gender.....	34	<b>Section V. Human Resources</b> .....	79
By Ethnicity.....	35	Section Overview .....	80
By Age.....	36	Fall 2013 Employee Breakdown.....	81

# SDCCD Fact Book 2014

---

## OVERVIEW

This Fact Book is a publication of the Office of Institutional Research and Planning for the San Diego Community College District. It is designed to serve the information needs of the community with a primary focus on student enrollment, demographics, and outcomes.

The Fact Book is a rich source of districtwide trend information that may be used for planning and decision making. The book contains the following five sections:

- 1) **Headcount and Student Characteristics.** Provides information on student demographic characteristics (e.g., age, ethnicity, and education objective) over five years.
- 2) **Persistence Rates.** Provides information about first-time to college students who complete a fall term and enroll in the subsequent spring and fall terms. The information is also reported by demographic characteristics of interest.
- 3) **Student Completion.** Provides information on students' successful course completion rates, retention rates, GPA, awards conferred, and transfer volume. All of the information is provided in summary form, as well as demographic characteristics of interest.
- 4) **Productivity and Efficiency.** Provides information on annual FTES, enrollment, fill rates, and Load (WSCH/FTEF).
- 5) **Human Resources.** Provides information on the number of employees by ethnicity, gender and employment type.

Each section contains the following benchmarks: 1) The percentage change over the five year period being reported, 2) The collegewide average, and 3) The "Districtwide" (includes Continuing Education) or "All Colleges" averages (excludes Continuing Education).

# SDCCD Fact Book 2014

---

## Mission Statement

The mission of the San Diego Community College District (SDCCD) is to provide accessible, high quality learning experiences to meet the educational needs of the San Diego community.

## Shared Values–Shared Vision

The San Diego Community College District is a multicultural institution with diverse colleges and Continuing Education campuses and varied priorities. However, we are bound together as an operational unit by a philosophical base of shared values and a shared vision of the future. We share the twin ideals of access and excellence. We are an institution which responds to the unique needs of local communities and student populations. We share an important role as a builder of communities from the classroom to the campus and beyond to the larger components of society. To these ends, teaching and learning are our highest priorities. Today we share the aspirations of our community as we move forward in the 21st century.

## **Section I** **Headcount and Student Characteristics**

# SDCCD Fact Book 2014

---

This section of the Fact Book contains student headcount by various student characteristics. The headcount figures are individual counts of students, or unduplicated headcount, based on official census counts at the end of the credit college semester. Drops, never attends, and cancelled classes are excluded from credit college data, as well as year-long summer in-service classes at Miramar. Less than one attendance hour, never attends, and cancelled classes are excluded from Continuing Education data. The headcount information is reported over a period of five years to analyze trends and establish benchmarks. Headcount information is reported by the following segments:

- 1) Overall (Colleges and Continuing Education)
- 2) Gender (Colleges and Continuing Education)
- 3) Ethnicity (Colleges and Continuing Education)
- 4) Age (Colleges and Continuing Education)
- 5) Enrollment Status (Colleges)
- 6) Educational Objective (Colleges and Continuing Education)
- 7) Primary Language (Colleges and Continuing Education)
- 8) Prior Educational Level (Colleges)
- 9) Service Area of Residence (Colleges and Continuing Education)
- 10) First Generation (Colleges)
- 11) Residency (Colleges)
- 12) DSPS (Colleges and Continuing Education)
- 13) EOPS (Colleges)
- 14) Day, Evening, and Online Status (Colleges and Continuing Education)
- 15) Military Status (Colleges)
- 16) Units Attempted by Units Earned (Colleges)

# SDCCD Fact Book 2014

**Overall Headcount:** Unduplicated headcount decreased 57%, from 46,451 in Summer 2009 to 20,101 in Summer 2013. Unduplicated headcount decreased 12%, from 80,192 in Fall 2009 to 70,636 in Fall 2013. Finally, unduplicated headcount decreased 11%, from 79,405 in Spring 2010, to 70,744 in Spring 2014.

Figure 1.1. SDCCD Overall Headcount (Fall)

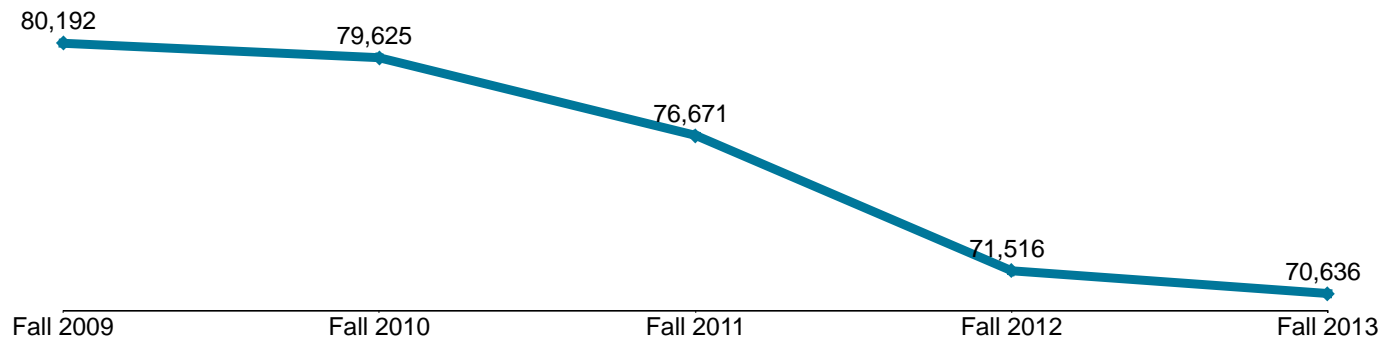


Table 1.1. SDCCD Overall Headcount (Summer, Fall, and Spring)

	Summer 09	Summer 10	Summer 11	Summer 12	Summer 13	% Change Summer 09-13
<b>Total</b>	46,451	42,479	18,737	17,580	20,101	-57%

	Fall 09	Fall 10	Fall 11	Fall 12	Fall 13	% Change Fall 09-13
<b>Total</b>	80,192	79,625	76,671	71,516	70,636	-12%

	Spring 10	Spring 11	Spring 12	Spring 13	Spring 14	% Change Spring 10-14
<b>Total</b>	79,405	81,437	76,064	71,349	70,744	-11%

Source: SDCCD Information System

# SDCCD Fact Book 2014

**Headcount by Gender:** On average, the female student headcount (55%) was higher than their male student counterpart (44%), which remained fairly consistent between Fall 2009 and Fall 2013. Both male and female student populations showed a decline in headcount between Fall 2009 and Fall 2013 (10% & 13%, respectively), which is consistent with the general enrollment decline during this period.

Figure 1.2. SDCCD Headcount by Gender

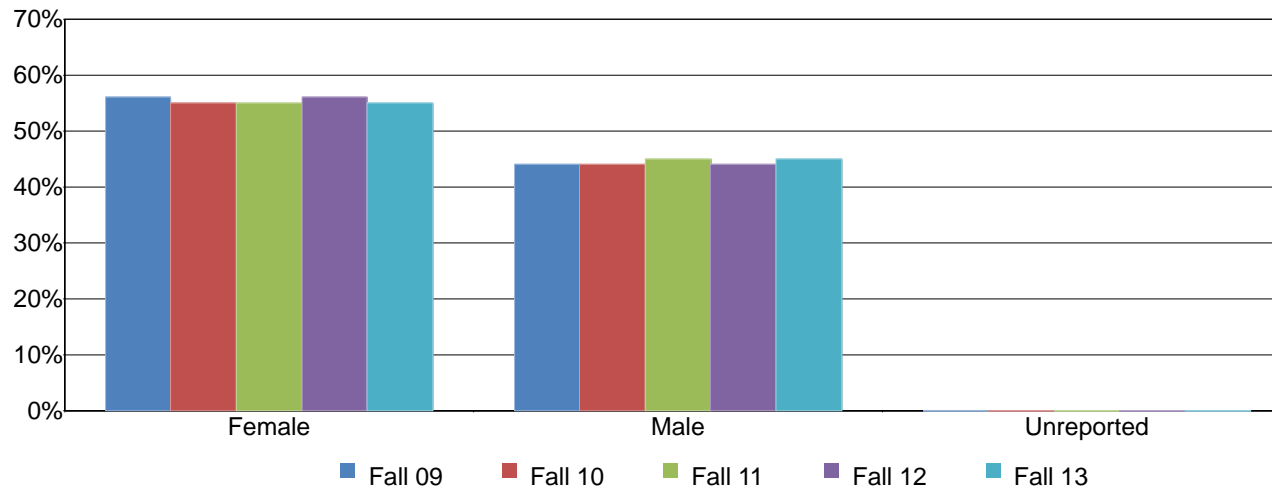


Table 1.2. SDCCD Headcount by Gender

	Fall 09		Fall 10		Fall 11		Fall 12		Fall 13		% Change Fall 09-13	Districtwide Average Fall 09-13
Female	44,870	56%	44,127	55%	42,231	55%	39,785	56%	38,823	55%	-13%	55%
Male	35,189	44%	35,382	44%	34,364	45%	31,706	44%	31,798	45%	-10%	44%
Unreported	133	0%	116	0%	76	0%	25	0%	15	0%	-89%	0%
<b>Total</b>	<b>80,192</b>	<b>100%</b>	<b>79,625</b>	<b>100%</b>	<b>76,671</b>	<b>100%</b>	<b>71,516</b>	<b>100%</b>	<b>70,636</b>	<b>100%</b>	<b>-12%</b>	<b>100%</b>

Source: SDCCD Information System



# SDCCD Fact Book 2014

**Headcount by Ethnicity:** The ethnic groups that comprised the largest percentage of headcount districtwide between Fall 2009 and Fall 2013 were White students (34%), Latino students (32%), and Asian/Pacific Islander students (12%). Districtwide, both American Indian and White students showed the greatest declines in headcount (56% & 21%, respectively) between Fall 2009 and Fall 2013.

Figure 1.3. SDCCD Headcount by Ethnicity

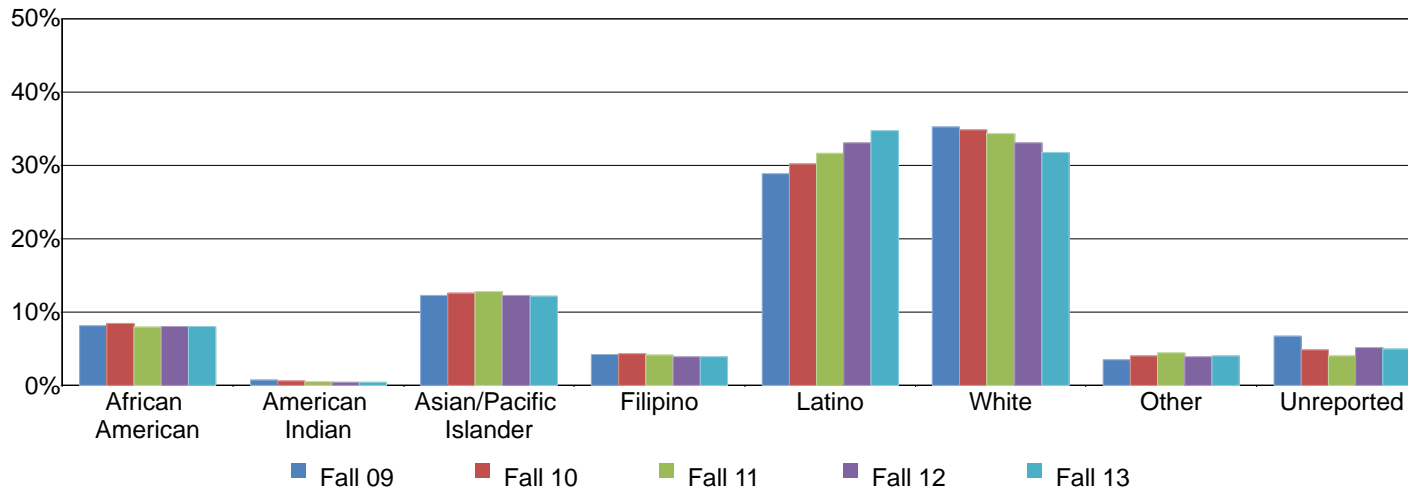


Table 1.3. SDCCD Headcount by Ethnicity

	Fall 09		Fall 10		Fall 11		Fall 12		Fall 13		% Change Fall 09-13	Districtwide Average Fall 09-13
African American	6,583	8%	6,744	8%	6,105	8%	5,757	8%	5,689	8%	-14%	8%
American Indian	623	1%	517	1%	461	1%	309	0%	273	0%	-56%	1%
Asian/Pacific Islander	9,866	12%	10,044	13%	9,807	13%	8,773	12%	8,578	12%	-13%	12%
Filipino	3,442	4%	3,464	4%	3,186	4%	2,793	4%	2,757	4%	-20%	4%
Latino	23,150	29%	24,018	30%	24,268	32%	23,653	33%	24,547	35%	6%	32%
White	28,297	35%	27,739	35%	26,324	34%	23,653	33%	22,418	32%	-21%	34%
Other	2,821	4%	3,249	4%	3,444	4%	2,838	4%	2,861	4%	1%	4%
Unreported	5,410	7%	3,850	5%	3,076	4%	3,740	5%	3,513	5%	-35%	5%
<b>Total</b>	<b>80,192</b>	<b>100%</b>	<b>79,625</b>	<b>100%</b>	<b>76,671</b>	<b>100%</b>	<b>71,516</b>	<b>100%</b>	<b>70,636</b>	<b>100%</b>	<b>-12%</b>	<b>100%</b>

Source: SDCCD Information System

# SDCCD Fact Book 2014

**Headcount by Age:** Between Fall 2009 and Fall 2013, the districtwide age groups with the largest percentage of headcount, on average, were students between ages 18 and 24 (38%), students age 50 and over (19%), and students ages 30-39 (16%). Students between ages 40 and 49 had the greatest decrease in headcount (22%) between Fall 2009 and Fall 2013.

Figure 1.4. SDCCD Headcount by Age

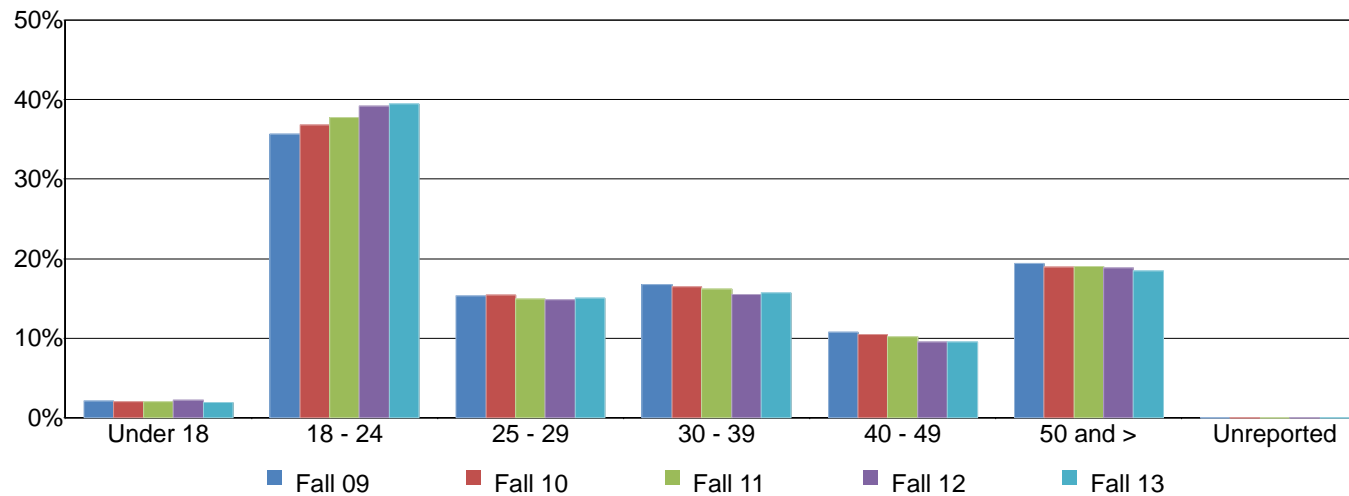


Table 1.4. SDCCD Headcount by Age

	Fall 09		Fall 10		Fall 11		Fall 12		Fall 13		% Change Fall 09-13	Districtwide Average Fall 09-13
Under 18	1,694	2%	1,562	2%	1,527	2%	1,577	2%	1,340	2%	-21%	2%
18 - 24	28,618	36%	29,312	37%	28,910	38%	28,039	39%	27,872	39%	-3%	38%
25 - 29	12,273	15%	12,300	15%	11,469	15%	10,578	15%	10,597	15%	-14%	15%
30 - 39	13,407	17%	13,087	16%	12,411	16%	11,073	15%	11,095	16%	-17%	16%
40 - 49	8,645	11%	8,298	10%	7,780	10%	6,775	9%	6,709	9%	-22%	10%
50 and >	15,547	19%	15,061	19%	14,571	19%	13,469	19%	13,019	18%	-16%	19%
Unreported	8	0%	5	0%	3	0%	5	0%	4	0%	-50%	0%
<b>Total</b>	<b>80,192</b>	<b>100%</b>	<b>79,625</b>	<b>100%</b>	<b>76,671</b>	<b>100%</b>	<b>71,516</b>	<b>100%</b>	<b>70,636</b>	<b>100%</b>	<b>-12%</b>	<b>100%</b>

Source: SDCCD Information System

# SDCCD Fact Book 2014

**Headcount by Enrollment Status:** On average, continuing students comprised 63% of the student population for all colleges in the District. The number of first-time to college students increased 5% between Fall 2009 and Fall 2013, and on average, comprised 11% of the student population. First-time transfer students also comprised 11% of the population, on average, between Fall 2009 and Fall 2013.

Figure 1.5. All Colleges Headcount by Enrollment Status

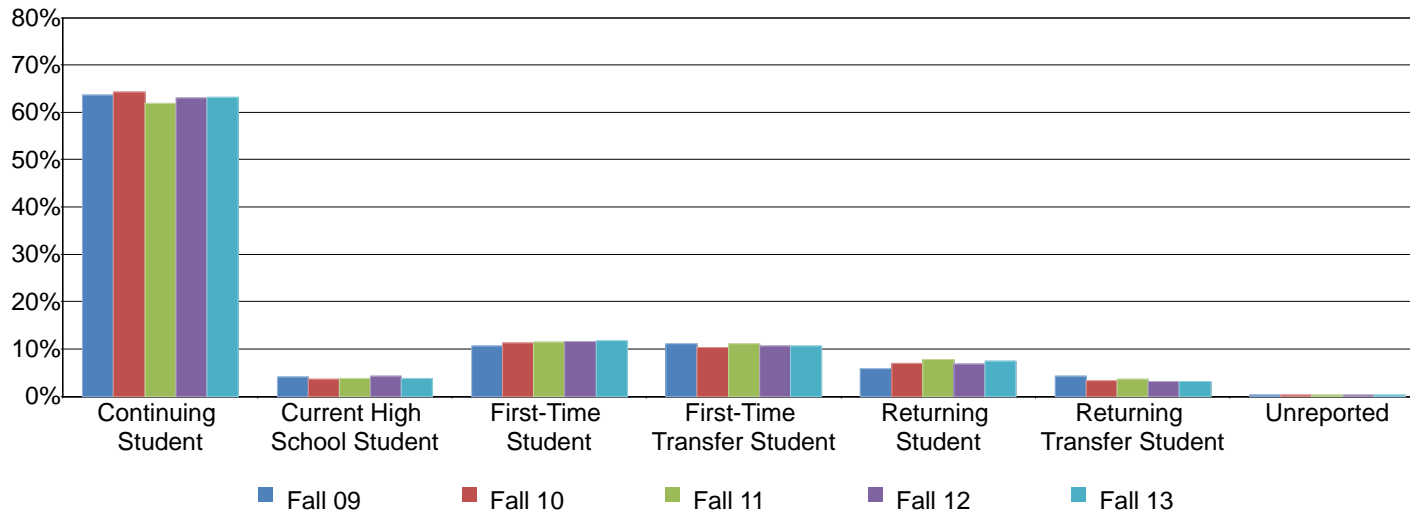


Table 1.5. All Colleges Headcount by Enrollment Status

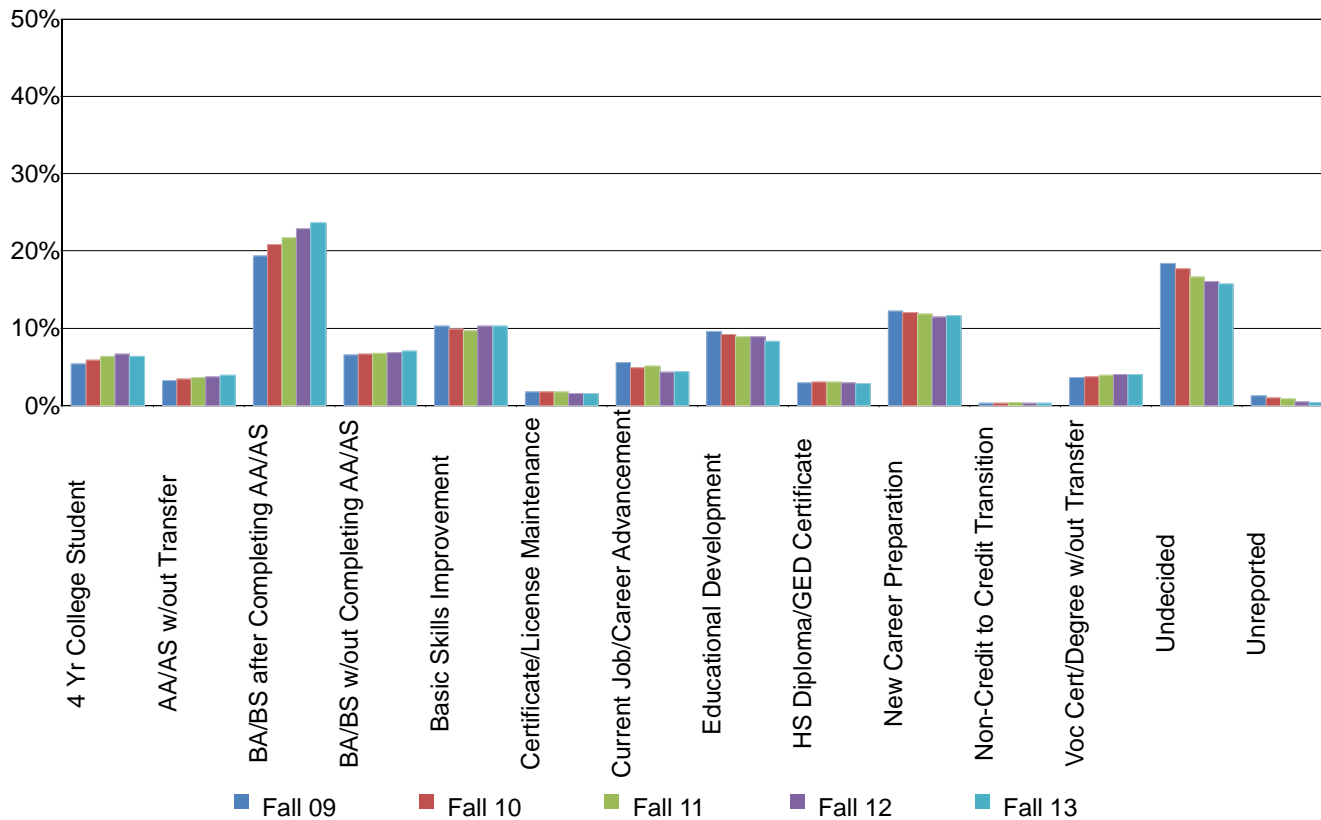
	Fall 09		Fall 10		Fall 11		Fall 12		Fall 13		% Change Fall 09-13	All Colleges Average Fall 09-13
Continuing Student	30,322	64%	31,556	64%	29,915	62%	28,819	63%	28,792	63%	-5%	63%
Current High School Student	1,952	4%	1,780	4%	1,866	4%	1,985	4%	1,714	4%	-12%	4%
First-Time Student	5,098	11%	5,535	11%	5,558	11%	5,344	12%	5,345	12%	5%	11%
First-Time Transfer Student	5,296	11%	5,047	10%	5,366	11%	4,910	11%	4,885	11%	-8%	11%
Returning Student	2,799	6%	3,417	7%	3,765	8%	3,121	7%	3,383	7%	21%	7%
Returning Transfer Student	2,046	4%	1,610	3%	1,734	4%	1,470	3%	1,407	3%	-31%	3%
Unreported	132	0%	127	0%	149	0%	109	0%	94	0%	-29%	0%
<b>Total</b>	<b>47,645</b>	<b>100%</b>	<b>49,072</b>	<b>100%</b>	<b>48,353</b>	<b>100%</b>	<b>45,758</b>	<b>100%</b>	<b>45,620</b>	<b>100%</b>	<b>-4%</b>	<b>100%</b>

Source: SDCCD Information System

# SDCCD Fact Book 2014

**Headcount by Educational Objective:** Nearly one third of the districtwide student population (29%) selected transfer to obtain a BA/BS with or without completing an AA/AS degree as their educational objective during the five terms being reported. Between Fall 2009 and Fall 2013, the educational objective that made the most gain in selection was the goal to obtain an AA/AS degree without transfer (increased by 10%). Students who selected educational development or high school diploma/GED certificate as educational objectives decreased 24% and 16%, respectively, between Fall 2009 and Fall 2013.

Figure 1.6. SDCCD Headcount by Educational Objective



# SDCCD Fact Book 2014

Table 1.6. SDCCD Headcount by Educational Objective

	Fall 09		Fall 10		Fall 11		Fall 12		Fall 13		% Change Fall 09-13	Districtwide Average Fall 09-13
4 Yr College Student	4,323	5%	4,671	6%	4,823	6%	4,757	7%	4,504	6%	4%	6%
AA/AS w/out Transfer	2,531	3%	2,702	3%	2,757	4%	2,640	4%	2,773	4%	10%	4%
BA/BS after Completing AA/AS	15,550	19%	16,537	21%	16,609	22%	16,369	23%	16,681	24%	7%	22%
BA/BS w/out Completing AA/AS	5,219	7%	5,267	7%	5,126	7%	4,877	7%	4,954	7%	-5%	7%
Basic Skills Improvement	8,250	10%	7,826	10%	7,421	10%	7,318	10%	7,212	10%	-13%	10%
Certificate/License Maintenance	1,375	2%	1,404	2%	1,345	2%	1,105	2%	1,116	2%	-19%	2%
Current Job/Career Advancement	4,415	6%	3,900	5%	3,848	5%	3,025	4%	3,109	4%	-30%	5%
Educational Development	7,631	10%	7,328	9%	6,815	9%	6,347	9%	5,824	8%	-24%	9%
HS Diploma/GED Certificate	2,325	3%	2,422	3%	2,264	3%	2,076	3%	1,962	3%	-16%	3%
New Career Preparation	9,763	12%	9,555	12%	9,032	12%	8,168	11%	8,177	12%	-16%	12%
Non-Credit to Credit Transition	206	0%	222	0%	266	0%	192	0%	155	0%	-25%	0%
Voc Cert/Degree w/out Transfer	2,871	4%	2,951	4%	2,949	4%	2,831	4%	2,779	4%	-3%	4%
Undecided	14,730	18%	14,094	18%	12,759	17%	11,459	16%	11,132	16%	-24%	17%
Unreported	1,003	1%	746	1%	657	1%	352	0%	258	0%	-74%	1%
<b>Total</b>	<b>80,192</b>	<b>100%</b>	<b>79,625</b>	<b>100%</b>	<b>76,671</b>	<b>100%</b>	<b>71,516</b>	<b>100%</b>	<b>70,636</b>	<b>100%</b>	<b>-12%</b>	<b>100%</b>

Source: SDCCD Information System

Note. The 2014 District Fact Book includes both the credit colleges and Continuing Education in the Educational Objective table.

# SDCCD Fact Book 2014

**Headcount by Primary Language:** On average, 82% of the districtwide student population spoke English as their primary language. Between Fall 2009 and Fall 2013, students who reported speaking a language other than English as their primary language decreased 12% as did students who reported speaking English as their primary language (-12%).

Table 1.7. SDCCD Headcount by Primary Language

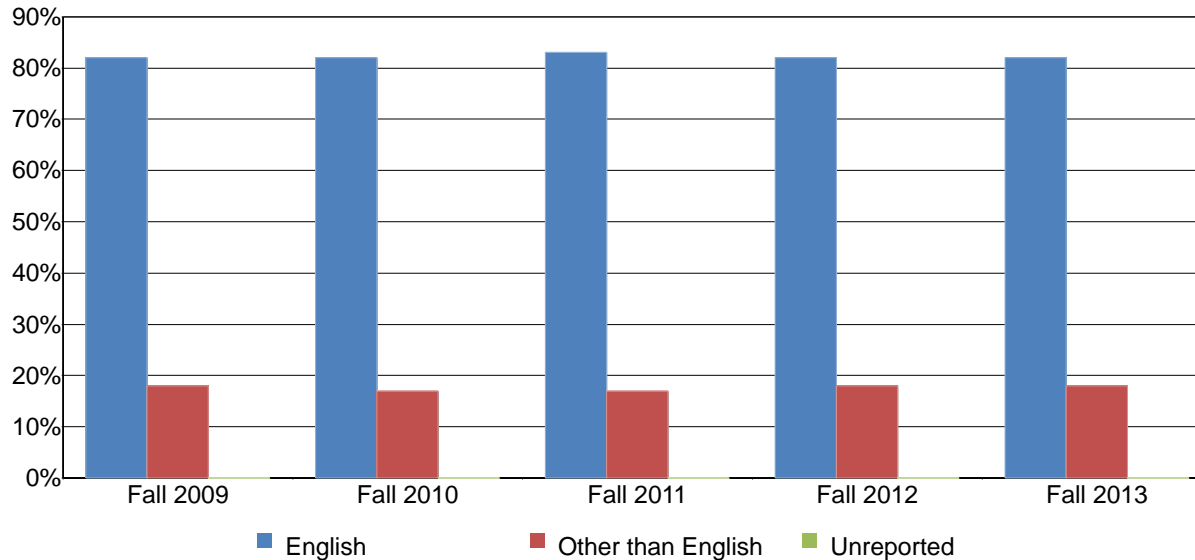


Table 1.7. SDCCD Headcount by Primary Language

	Fall 09		Fall 10		Fall 11		Fall 12		Fall 13		% Change Fall 09-13	Districtwide Average Fall 09-13
English	65,492	82%	65,655	82%	63,360	83%	58,836	82%	57,918	82%	-12%	82%
Other than English	14,481	18%	13,803	17%	13,194	17%	12,636	18%	12,694	18%	-12%	18%
Unreported	219	0%	167	0%	117	0%	44	0%	24	0%	-89%	0%
<b>Total</b>	<b>80,192</b>	<b>100%</b>	<b>79,625</b>	<b>100%</b>	<b>76,671</b>	<b>100%</b>	<b>71,516</b>	<b>100%</b>	<b>70,636</b>	<b>100%</b>	<b>-12%</b>	<b>100%</b>

Source: SDCCD Information System

*Note. The 2014 District Factbook includes both credit colleges and Continuing Education in the Primary Language table.*

# SDCCD Fact Book 2014

**Headcount by Prior Education Level:** Between Fall 2009 and Fall 2013, a majority of the general student population for all colleges in the District reported they obtained high school or higher education degree (94%) on average. However, students with associate degrees decreased 14%, as did students with bachelor's degrees or higher (-23%).

Figure 1.8. All Colleges Headcount by Prior Education Level

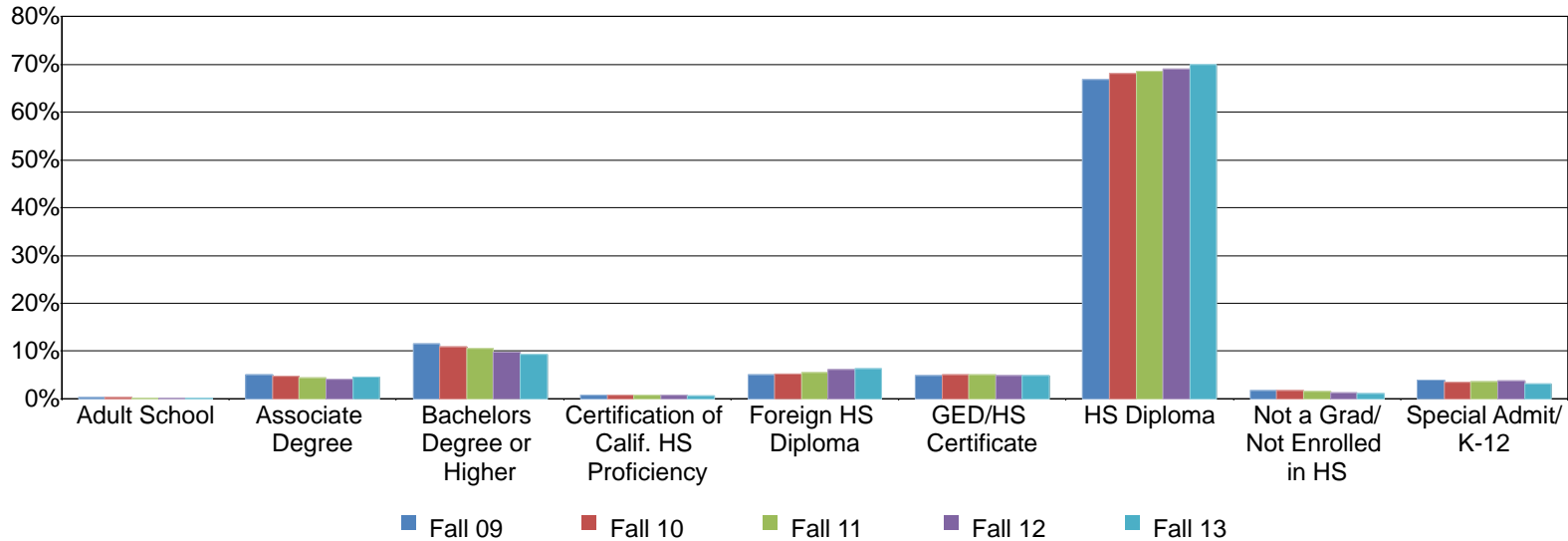


Table 1.8. All Colleges Headcount by Prior Education Level

	Fall 09		Fall 10		Fall 11		Fall 12		Fall 13		% Change Fall 09-13	All Colleges Average Fall 09-13
Adult School	128	0%	128	0%	95	0%	76	0%	58	0%	-55%	0%
Associate Degree	2,366	5%	2,336	5%	2,160	4%	1,886	4%	2,045	4%	-14%	5%
Bachelors Degree or Higher	5,507	12%	5,352	11%	5,065	10%	4,478	10%	4,226	9%	-23%	10%
Certification of Calif. HS Proficiency	352	1%	360	1%	355	1%	331	1%	295	1%	-16%	1%
Foreign HS Diploma	2,420	5%	2,516	5%	2,654	5%	2,808	6%	2,900	6%	20%	6%
GED/HS Certificate	2,347	5%	2,453	5%	2,430	5%	2,231	5%	2,212	5%	-6%	5%
HS Diploma	31,795	67%	33,380	68%	33,103	68%	31,588	69%	31,921	70%	0%	68%
Not a Grad/Not Enrolled in HS	845	2%	864	2%	765	2%	608	1%	497	1%	-41%	2%
Special Admit/K-12	1,885	4%	1,683	3%	1,726	4%	1,752	4%	1,466	3%	-22%	4%
<b>Total</b>	<b>47,645</b>	<b>100%</b>	<b>49,072</b>	<b>100%</b>	<b>48,353</b>	<b>100%</b>	<b>45,758</b>	<b>100%</b>	<b>45,620</b>	<b>100%</b>	<b>-4%</b>	<b>100%</b>

Source: SDCCD Information System

# SDCCD Fact Book 2014

**Headcount by Service Area of Residence:** Between Fall 2009 and Fall 2013, on average, 37% of the general student population districtwide resided within the City College service area, 23% resided within the Mesa College service area, and 10% resided within the Miramar College service area. Thirty percent of students lived outside the District service areas.

Figure 1.9. SDCCD Headcount by Service Area of Residence

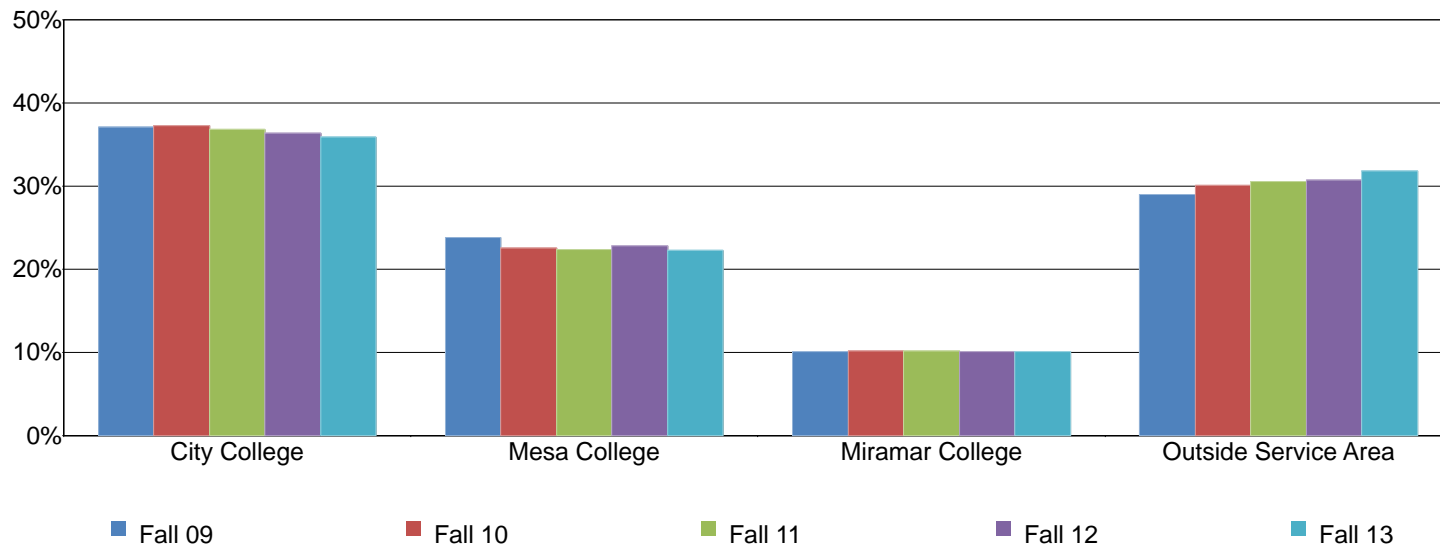


Table 1.9. SDCCD Headcount by Service Area of Residence

	Fall 09		Fall 10		Fall 11		Fall 12		Fall 13		% Change Fall 09-13	Districtwide Average Fall 09-13
City College	29,739	37%	29,684	37%	28,244	37%	25,978	36%	25,338	36%	-15%	37%
Mesa College	19,119	24%	17,930	23%	17,170	22%	16,345	23%	15,708	22%	-18%	23%
Miramar College	8,084	10%	8,081	10%	7,832	10%	7,202	10%	7,126	10%	-12%	10%
Outside Service Area	23,250	29%	23,930	30%	23,425	31%	21,991	31%	22,464	32%	-3%	30%
<b>Total</b>	<b>80,192</b>	<b>100%</b>	<b>79,625</b>	<b>100%</b>	<b>76,671</b>	<b>100%</b>	<b>71,516</b>	<b>100%</b>	<b>70,636</b>	<b>100%</b>	<b>-12%</b>	<b>100%</b>

Source: SDCCD Information System



# SDCCD Fact Book 2014

**Headcount by First Generation:** Between Fall 2009 and Fall 2013, on average, approximately one quarter of the students reported being first generation college students (28%). First generation college students showed an increase of 3%, while students who reported they were not first generation college students decreased 7% between Fall 2009 and Fall 2013.

Figure 1.10. All Colleges Headcount by First Generation

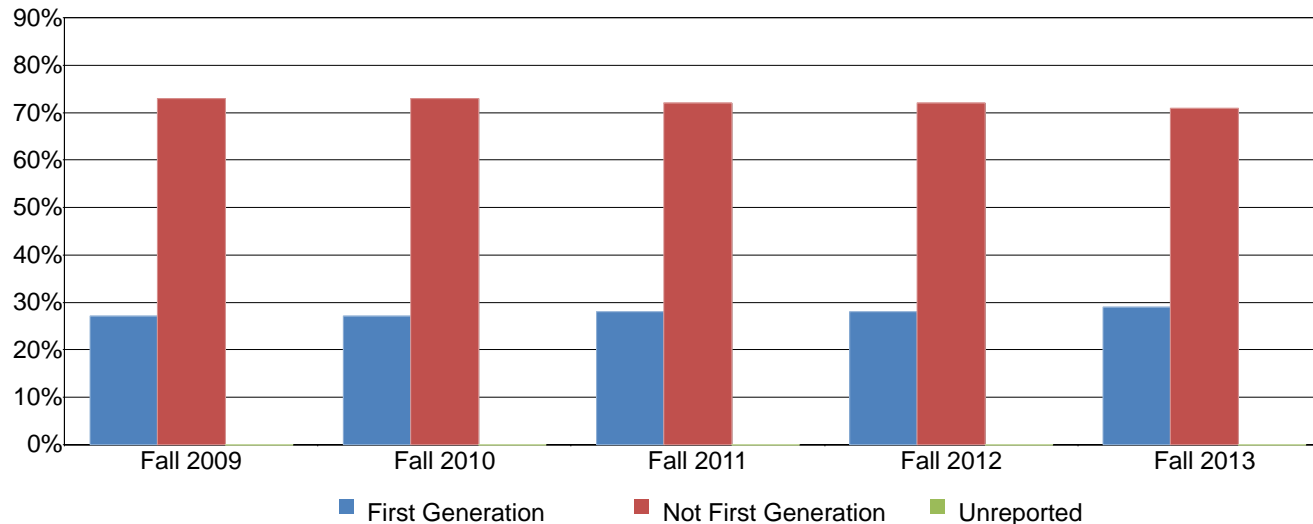


Table 1.10. All Colleges Headcount by First Generation

	Fall 09		Fall 10		Fall 11		Fall 12		Fall 13		% Change Fall 09-13	All Colleges Average Fall 09-13
First Generation	12,749	27%	13,361	27%	13,591	28%	12,862	28%	13,179	29%	3%	28%
Not First Generation	34,757	73%	35,620	73%	34,692	72%	32,839	72%	32,399	71%	-7%	72%
Unreported	139	0%	91	0%	70	0%	57	0%	42	0%	-70%	0%
<b>Total</b>	<b>47,645</b>	<b>100%</b>	<b>49,072</b>	<b>100%</b>	<b>48,353</b>	<b>100%</b>	<b>45,758</b>	<b>100%</b>	<b>45,620</b>	<b>100%</b>	<b>-4%</b>	<b>100%</b>

Source: SDCCD Information System

# SDCCD Fact Book 2014

**Headcount by Residency:** Between Fall 2009 and Fall 2013 the majority of students (96%), on average, were residents of California. There was an increase in non-resident status (22%) during the same time period, while residents showed a 5% decrease in headcount.

Figure 1.11. All Colleges Headcount by Residency

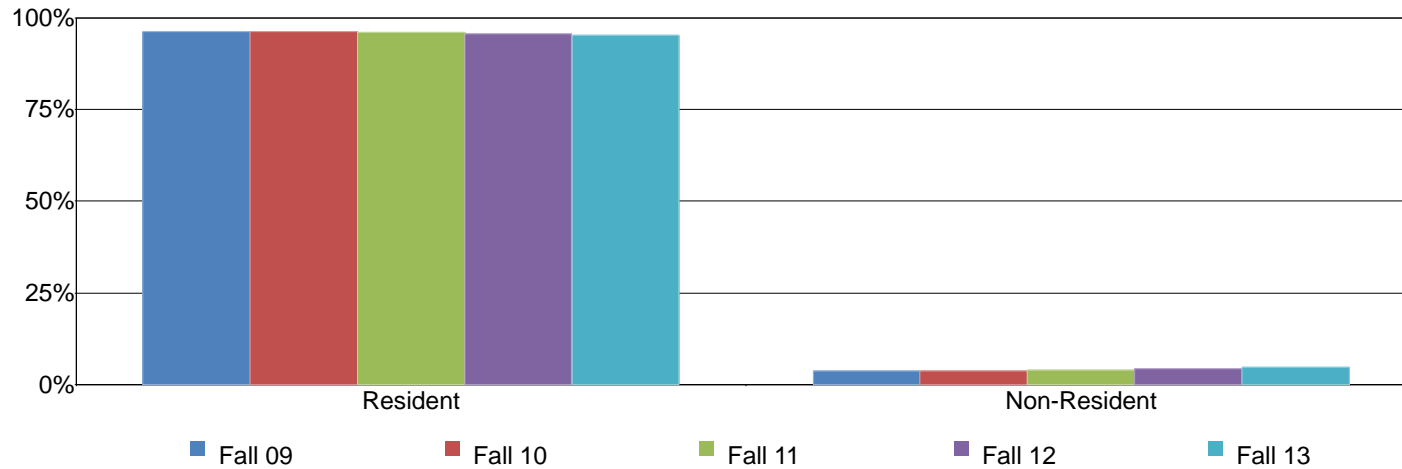


Table 1.11. All Colleges Headcount by Residency

	Fall 09	Fall 10	Fall 11	Fall 12	Fall 13	% Change Fall 09-13	All Colleges Average Fall 09-13
Resident	45,821 96%	47,250 96%	46,396 96%	43,773 96%	43,399 95%	-5%	96%
Non-Resident	1,824 4%	1,822 4%	1,957 4%	1,985 4%	2,221 5%	22%	4%
<b>Total</b>	<b>47,645 100%</b>	<b>49,072 100%</b>	<b>48,353 100%</b>	<b>45,758 100%</b>	<b>45,620 100%</b>	<b>-4%</b>	<b>100%</b>

Source: SDCCD Information System

# SDCCD Fact Book 2014

**Headcount by Disability Support Programs and Services (DSPS):** On average, 3% of the districtwide student population received some type of disability support services between Fall 2009 and Fall 2013. The number of students who received disability support services increased 10%, from 2,538 in Fall 2009 to 2,799 in Fall 2013.

Figure 1.12. SDCCD Headcount by Disability Support Programs and Services (DSPS)

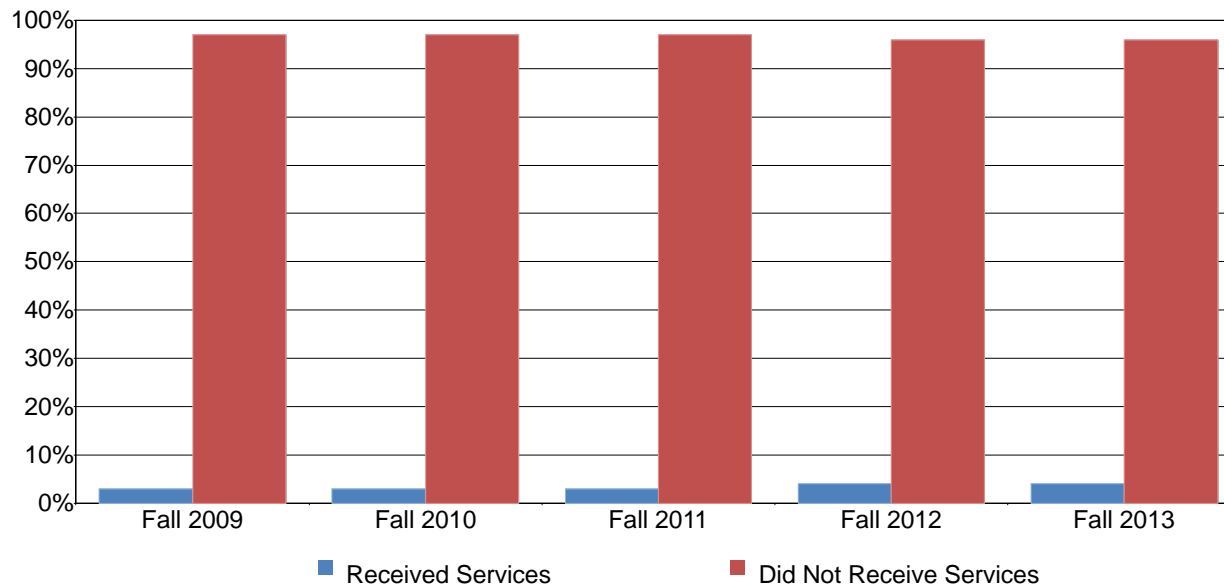


Table 1.12. SDCCD Headcount by Disability Support Programs and Services (DSPS)

	Fall 09		Fall 10		Fall 11		Fall 12		Fall 13		% Change Fall 09-13	Districtwide Average Fall 09-13
Received Services	2,538	3%	2,418	3%	2,651	3%	2,622	4%	2,799	4%	10%	3%
Did Not Receive Services	77,654	97%	77,207	97%	74,020	97%	68,894	96%	67,837	96%	-13%	97%
<b>Total</b>	<b>80,192</b>	<b>100%</b>	<b>79,625</b>	<b>100%</b>	<b>76,671</b>	<b>100%</b>	<b>71,516</b>	<b>100%</b>	<b>70,636</b>	<b>100%</b>	<b>-12%</b>	<b>100%</b>

Source: SDCCD Information System

Note. The 2014 District Factbook includes both the credit colleges and Continuing Education in the DSPS table.

# SDCCD Fact Book 2014

**Headcount by Extended Opportunity Programs and Services (EOPS):** On average, 3% of the student population for all colleges in the District received EOPS services between Fall 2009 and Fall 2013. There was a 15% increase in the number of students who received EOPS services from Fall 2009 to Fall 2013.

Figure 1.13. All Colleges Headcount by Extended Opportunity Programs and Services (EOPS)

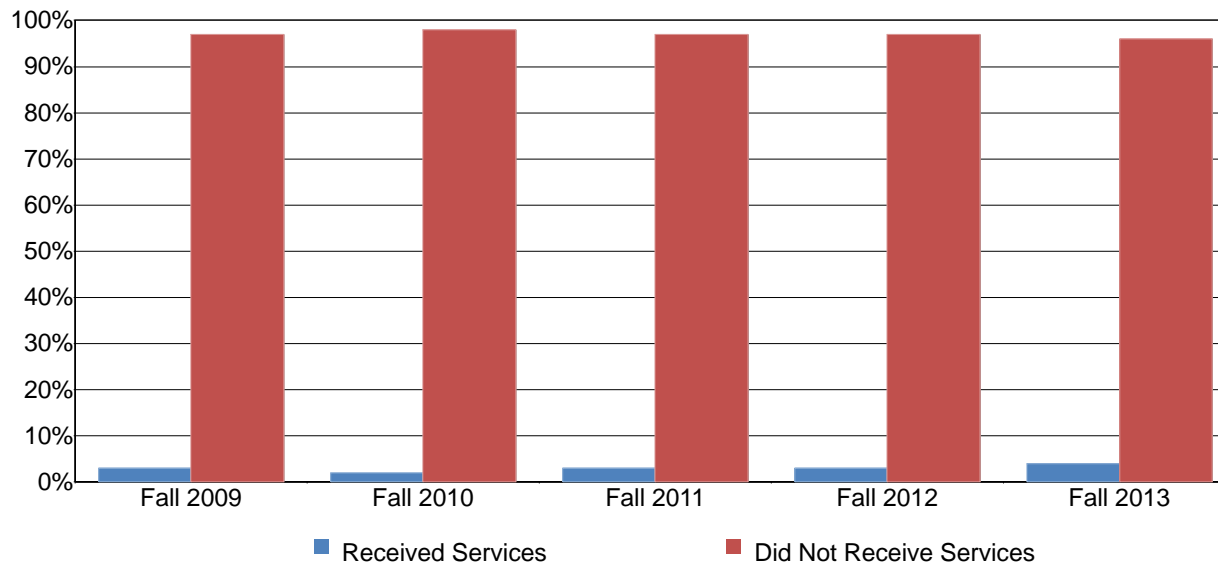


Table 1.13. All Colleges Headcount by Extended Opportunity Programs and Services (EOPS)

	Fall 09		Fall 10		Fall 11		Fall 12		Fall 13		% Change Fall 09-13	All Colleges Average Fall 09-13
Received Services	1,539	3%	1,226	2%	1,537	3%	1,535	3%	1,772	4%	15%	3%
Did Not Receive Services	46,106	97%	47,846	98%	46,816	97%	44,223	97%	43,848	96%	-5%	97%
<b>Total</b>	<b>47,645</b>	<b>100%</b>	<b>49,072</b>	<b>100%</b>	<b>48,353</b>	<b>100%</b>	<b>45,758</b>	<b>100%</b>	<b>45,620</b>	<b>100%</b>	<b>-4%</b>	<b>100%</b>

Source: SDCCD Information System

# SDCCD Fact Book 2014

**Headcount by Day, Evening, & Online Status:** On average, 51% of the districtwide student population took courses only during the day, while 17% took courses only in the evening. Approximately one out of every six students (16%) took courses both in the day and evening. Students that took both on-campus and online courses increased 19%, from 6,689 in Fall 2009 to 7,971 in Fall 2013. The online only students decreased 5% during the same time period.

Figure 1.14. SDCCD Headcount by Day, Evening, & Online Status

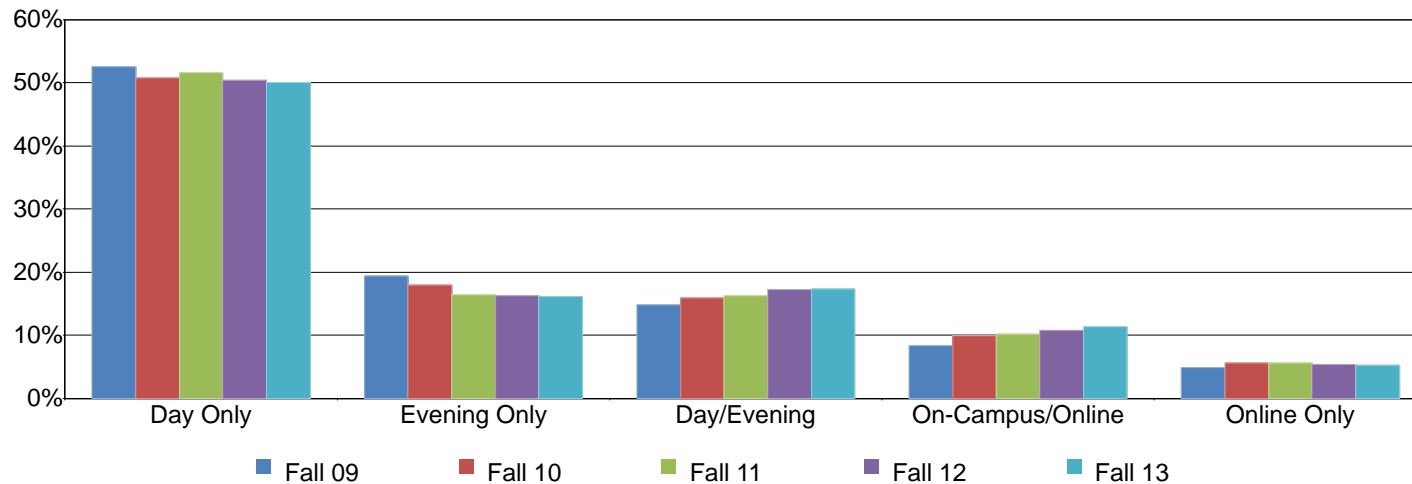


Table 1.14. SDCCD Headcount by Day, Evening, & Online Status

	Fall 09		Fall 10		Fall 11		Fall 12		Fall 13		% Change Fall 09-13	Districtwide Average Fall 09-13
Day Only	42,127	53%	40,405	51%	39,524	52%	36,056	50%	35,299	50%	-16%	51%
Evening Only	15,546	19%	14,253	18%	12,557	16%	11,632	16%	11,416	16%	-27%	17%
Day/Evening	11,919	15%	12,662	16%	12,494	16%	12,341	17%	12,228	17%	3%	16%
On-Campus/Online	6,689	8%	7,882	10%	7,788	10%	7,649	11%	7,971	11%	19%	10%
Online Only	3,911	5%	4,423	6%	4,308	6%	3,838	5%	3,722	5%	-5%	5%
<b>Total</b>	<b>80,192</b>	<b>100%</b>	<b>79,625</b>	<b>100%</b>	<b>76,671</b>	<b>100%</b>	<b>71,516</b>	<b>100%</b>	<b>70,636</b>	<b>100%</b>	<b>-12%</b>	<b>100%</b>

Source: SDCCD Information System

# SDCCD Fact Book 2014

**Headcount by Military Status:** On average, 8% of the student population were active military or veterans between Fall 2009 and Fall 2013. Another 3% were dependents of active military or veteran personnel. There was a 61% increase in active military students between Fall 2009 and Fall 2013.

Figure 1.15. All Colleges Headcount by Military Status

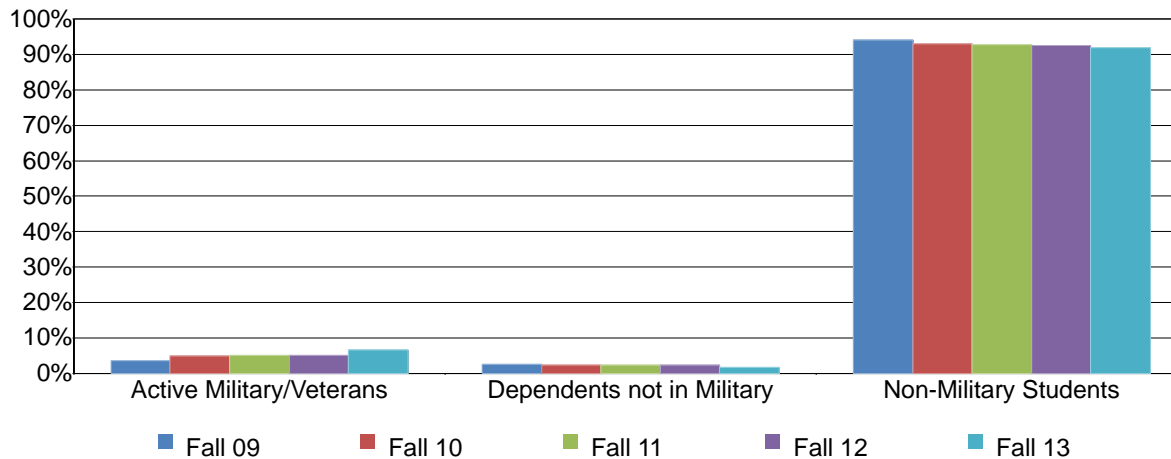


Table 1.15. All Colleges Headcount by Military Status

	Fall 09		Fall 10		Fall 11		Fall 12		Fall 13		% Change Fall 09-13	All Colleges Average Fall 09-13
Active Military/Veterans	2,837	6%	3,834	8%	3,906	8%	3,660	8%	4,581	10%	61%	8%
Dependents not in Military	1,983	4%	1,795	4%	1,705	4%	1,615	4%	1,084	2%	-45%	3%
Non-Military Students	42,825	90%	43,443	89%	42,742	88%	40,483	88%	39,955	88%	-7%	89%
<b>Total</b>	<b>47,645</b>	<b>100%</b>	<b>49,072</b>	<b>100%</b>	<b>48,353</b>	<b>100%</b>	<b>45,758</b>	<b>100%</b>	<b>45,620</b>	<b>100%</b>	<b>-4%</b>	<b>100%</b>

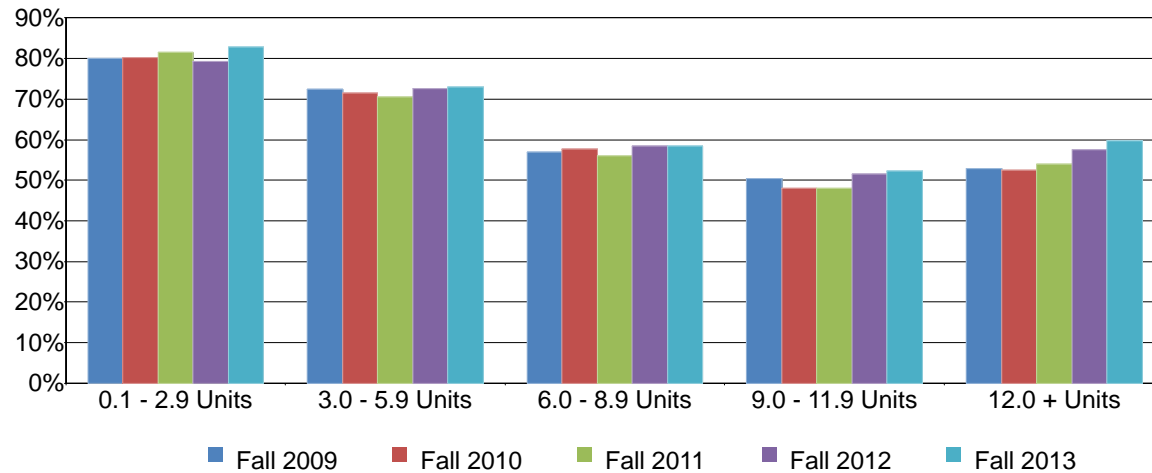
Source: SDCCD Information System

*Note. The Dependents not in Military category consists of dependents/spouses of military personnel that are not an active military/veteran.*

# SDCCD Fact Book 2014

**Headcount by Units Attempted by Units Earned:** Table 1.16 shows the interplay between units attempted (in rows) and units earned (in columns). The greatest proportion of students who attempted and earned units were those in the 0.1-2.9 unit range on average (81%). The least proportion of students who attempted and earned units were those in the 9.0-11.9 unit range on average (50%). Students who attempted and earned 12.0 or more units increased 29%, while students who attempted and earned between 0.1-2.9 units decreased 28% between Fall 2009 and Fall 2013.

Figure 1.16. All Colleges Headcount by Units Attempted by Units Earned



# SDCCD Fact Book 2014

Table 1.16. All Colleges Headcount by Units Attempted by Units Earned

		Units Earned						
		0 Units	0.1 - 2.9 Units	3.0 - 5.9 Units	6.0 - 8.9 Units	9.0 - 11.9 Units	12.0 + Units	
Units Attempted	Fall 2009	0.1 - 2.9 Units	20%	<b>80%</b>				
		3.0 - 5.9 Units	26%	1%	<b>72%</b>			
		6.0 - 8.9 Units	19%	2%	22%	<b>57%</b>		
		9.0 - 11.9 Units	14%	1%	14%	20%	<b>50%</b>	
		12.0 + Units	7%	1%	8%	12%	18%	<b>53%</b>
Fall 2010	0.1 - 2.9 Units	20%	<b>80%</b>					
	3.0 - 5.9 Units	27%	2%	<b>72%</b>				
	6.0 - 8.9 Units	19%	2%	21%	<b>58%</b>			
	9.0 - 11.9 Units	16%	2%	14%	21%	<b>48%</b>		
	12.0 + Units	8%	1%	8%	12%	18%	<b>52%</b>	
Fall 2011	0.1 - 2.9 Units	19%	<b>81%</b>					
	3.0 - 5.9 Units	28%	2%	<b>71%</b>				
	6.0 - 8.9 Units	21%	2%	21%	<b>56%</b>			
	9.0 - 11.9 Units	16%	1%	14%	20%	<b>48%</b>		
	12.0 + Units	8%	1%	7%	12%	18%	<b>54%</b>	
Fall 2012	0.1 - 2.9 Units	21%	<b>79%</b>					
	3.0 - 5.9 Units	26%	2%	<b>73%</b>				
	6.0 - 8.9 Units	19%	2%	20%	<b>58%</b>			
	9.0 - 11.9 Units	14%	1%	13%	20%	<b>52%</b>		
	12.0 + Units	7%	1%	6%	11%	18%	<b>58%</b>	
Fall 2013	0.1 - 2.9 Units	17%	<b>83%</b>					
	3.0 - 5.9 Units	26%	1%	<b>73%</b>				
	6.0 - 8.9 Units	20%	2%	20%	<b>58%</b>			
	9.0 - 11.9 Units	14%	1%	13%	20%	<b>52%</b>		
	12.0 + Units	6%	1%	6%	11%	17%	<b>60%</b>	
% Change Fall 09-13		---	-28%	-16%	-6%	7%	29%	
Average Fall 09-13		---	81%	72%	57%	50%	55%	

Source: SDCCD Information System

Note. Percent change and average were based on counts.



**Section II  
Persistence Rates**

# SDCCD Fact Book 2014

---

This section of the Fact Book contains information on the term and annual persistence rates for first-time to college students. For purposes of this report, the term persistence rate is the percentage of first-time to college students who enrolled in a fall term as of official census who received a grade notation of A, B, C, D, F, P, NP, I, or RD and who enrolled in at least one course in the subsequent spring term and received a grade notation of A, B, C, D, F, P, NP, I, or RD (SDSU and UCSD-only students and sections are excluded. Intersession, tutoring, in-service, and cancelled classes are excluded). Annual persistence follows the same operational definition; however, student enrollments are tracked from fall to spring to fall.

The information in this section includes five years of data and is reported as follows:

- 1) Overall
- 2) Gender
- 3) Ethnicity
- 4) Age

# SDCCD Fact Book 2014

**Overall Persistence:** The average term persistence rates of first-time students at the colleges was 76% among the Fall 2008 to Fall 2013 cohorts, and the average annual persistence rate among the Fall 2008 to Fall 2012 cohorts was 54%. Overall, term persistence rates increased nine percentage points, from 69% in Fall 2008 to 78% in Fall 2013. Annual persistence rates steadily increased 11 percentage points, from 48% in Fall 2008 to 59% in Fall 2012.

Figure 2.1. All Colleges First-Time Student Overall Annual Persistence

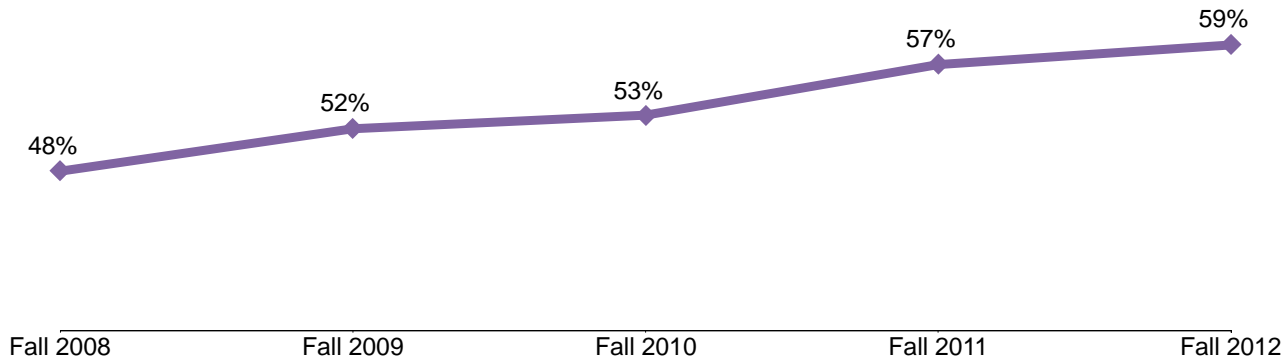


Table 2.1. All Colleges First-Time Student Overall Term and Annual Persistence

Cohort	Fall Enrolled Cohort	Term Persistence Counts	Term Persistence Rates	Annual Persistence Counts	Annual Persistence Rates
Fall 2008	3,773	2,586	69%	1,822	48%
Fall 2009	3,923	2,838	72%	2,034	52%
Fall 2010	4,504	3,416	76%	2,385	53%
Fall 2011	4,552	3,570	78%	2,604	57%
Fall 2012	4,576	3,614	79%	2,693	59%
Fall 2013	4,473	3,510	78%	---	---
<b>Total/Average</b>	<b>25,801</b>	<b>19,534</b>	<b>76%</b>	<b>11,538</b>	<b>54%</b>

Source: SDCCD Information System

*Note. Overall annual persistence counts and rates exclude the Fall 2013 cohort due to the unavailability of Fall 2014 data.*

# SDCCD Fact Book 2014

**Annual Persistence by Gender:** On average, annual persistence rates of female students (57%) were higher than their male student counterpart (52%) between the Fall 2008 and Fall 2012 cohorts. Persistence rates for both female and male students increased seven percentage points and 14 percentage points, respectively, between the Fall 2008 and Fall 2012 cohorts.

Figure 2.2. All Colleges First-Time Student Annual Persistence by Gender

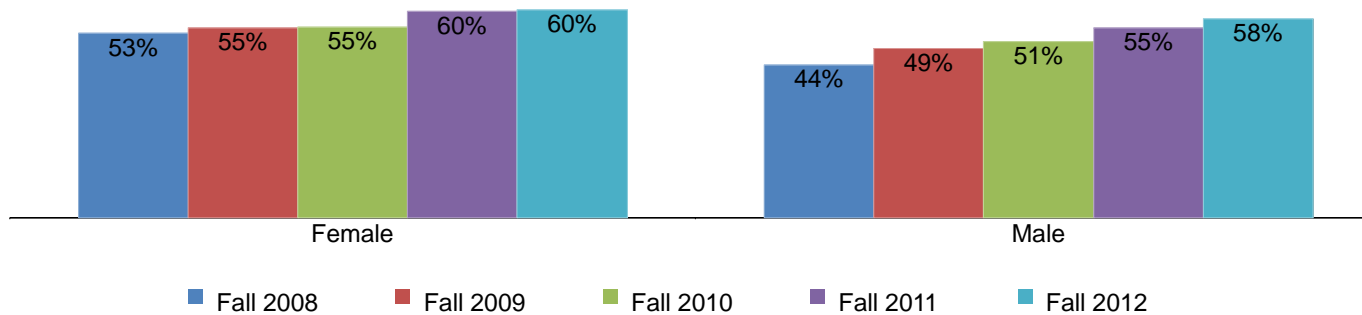


Table 2.2. All Colleges First-Time Student Annual Persistence by Gender

Cohort	Female			Male		
	Fall Enrolled Cohort	Annual Persistence Counts	Annual Persistence Rates	Fall Enrolled Cohort	Annual Persistence Counts	Annual Persistence Rates
Fall 2008	1,702	908	53%	2,070	914	44%
Fall 2009	1,815	998	55%	2,108	1,036	49%
Fall 2010	2,063	1,139	55%	2,441	1,246	51%
Fall 2011	2,047	1,225	60%	2,505	1,379	55%
Fall 2012	2,166	1,306	60%	2,408	1,386	58%
<b>Total/Average</b>	<b>9,793</b>	<b>5,576</b>	<b>57%</b>	<b>11,532</b>	<b>5,961</b>	<b>52%</b>

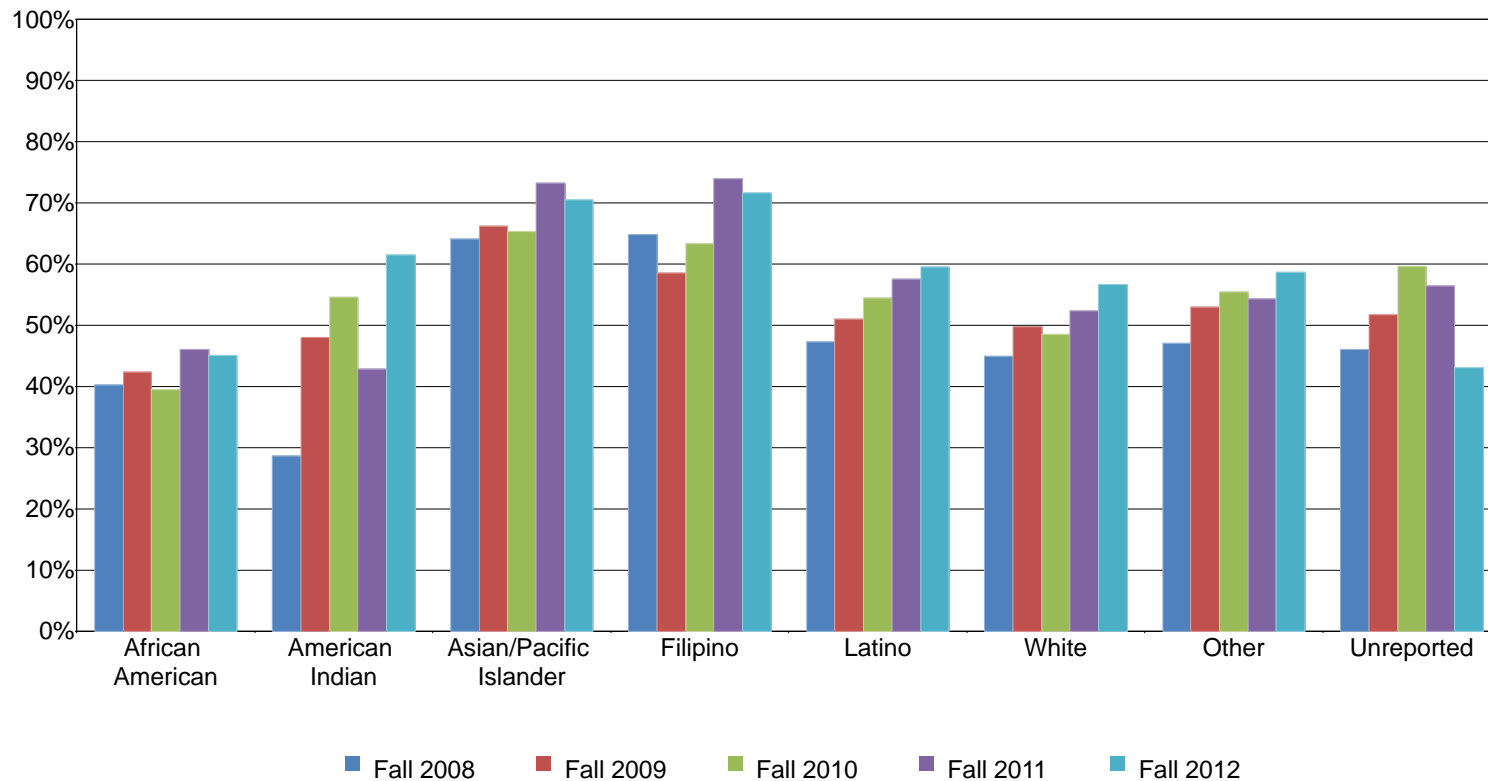
Source: SDCCD Information System

Note. Due to a low student cohort count, 'Unreported' students are excluded from the analysis

# SDCCD Fact Book 2014

**Annual Persistence by Ethnicity:** The ethnic groups with the highest annual persistence rates, on average, were Asian/Pacific Islander students (68%), Filipino students (66%), and Latino students (55%). Annual persistence rates increased for all ethnic groups between Fall 2008 and Fall 2012. Latino and White students showed the greatest increase over this five year period, increasing 13 percentage points and 12 percentage points, respectively.

Figure 2.3. All Colleges First-Time Student Annual Persistence by Ethnicity



# SDCCD Fact Book 2014

Table 2.3. All Colleges First-Time Student Annual Persistence by Ethnicity

Cohort	African American			American Indian			Asian/Pacific Islander			Filipino		
	Fall Enrolled Cohort	Annual Persistence Counts	Annual Persistence Rates	Fall Enrolled Cohort	Annual Persistence Counts	Annual Persistence Rates	Fall Enrolled Cohort	Annual Persistence Counts	Annual Persistence Rates	Fall Enrolled Cohort	Annual Persistence Counts	Annual Persistence Rates
Fall 2008	350	141	40%	35	10	29%	392	251	64%	216	140	65%
Fall 2009	416	176	42%	25	12	48%	420	278	66%	212	124	58%
Fall 2010	402	159	40%	22	12	55%	392	256	65%	224	142	63%
Fall 2011	361	166	46%	14	6	43%	447	327	73%	211	156	74%
Fall 2012	404	182	45%	13	8	62%	437	308	70%	211	151	72%
<b>Total/Average</b>	<b>1,933</b>	<b>824</b>	<b>43%</b>	<b>109</b>	<b>48</b>	<b>44%</b>	<b>2,088</b>	<b>1,420</b>	<b>68%</b>	<b>1,074</b>	<b>713</b>	<b>66%</b>

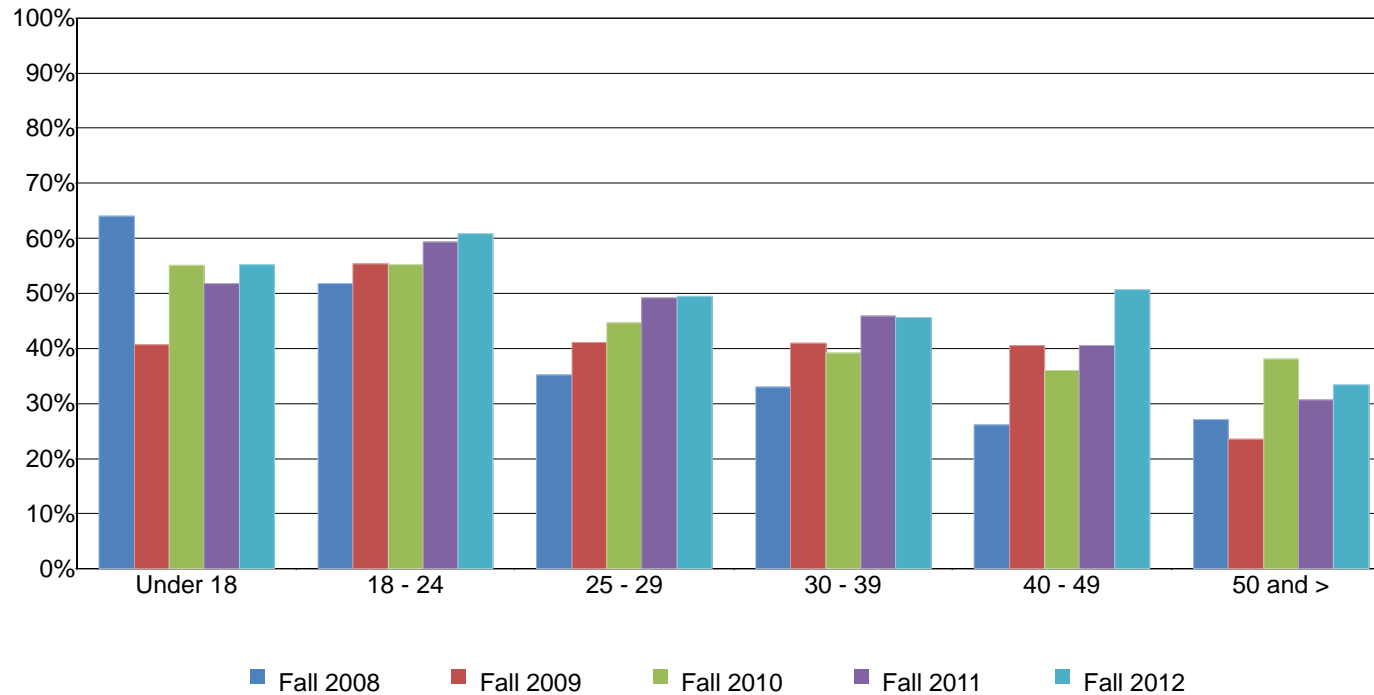
Cohort	Latino			White			Other			Unreported		
	Fall Enrolled Cohort	Annual Persistence Counts	Annual Persistence Rates	Fall Enrolled Cohort	Annual Persistence Counts	Annual Persistence Rates	Fall Enrolled Cohort	Annual Persistence Counts	Annual Persistence Rates	Fall Enrolled Cohort	Annual Persistence Counts	Annual Persistence Rates
Fall 2008	1,114	526	47%	1,323	595	45%	102	48	47%	241	111	46%
Fall 2009	1,323	675	51%	1,173	584	50%	153	81	53%	201	104	52%
Fall 2010	1,871	1,018	54%	1,267	615	49%	269	149	55%	57	34	60%
Fall 2011	1,940	1,115	57%	1,222	639	52%	302	164	54%	55	31	56%
Fall 2012	1,983	1,181	60%	1,166	661	57%	297	174	59%	65	28	43%
<b>Total/Average</b>	<b>8,231</b>	<b>4,515</b>	<b>55%</b>	<b>6,151</b>	<b>3,094</b>	<b>50%</b>	<b>1,123</b>	<b>616</b>	<b>55%</b>	<b>619</b>	<b>308</b>	<b>50%</b>

Source: SDCCD Information System

# SDCCD Fact Book 2014

**Annual Persistence by Age:** A general trend among the Fall 2008 to the Fall 2012 cohorts showed as age increased, annual persistence rates decreased. On average, students between ages 18 and 24 had the highest persistence rates (57%). Annual persistence rates increased by 14 percentage points between the Fall 2008 and Fall 2012 cohorts for students ages 25-29, and 25 percentage points for those in the 40-49 age group.

Figure 2.4. All Colleges First-Time Student Annual Persistence by Age



# SDCCD Fact Book 2014

Table 2.4. All Colleges First-Time Student Annual Persistence by Age

Cohort	Under 18			18 - 24			25 - 29		
	Fall Enrolled Cohort	Annual Persistence Counts	Annual Persistence Rates	Fall Enrolled Cohort	Annual Persistence Counts	Annual Persistence Rates	Fall Enrolled Cohort	Annual Persistence Counts	Annual Persistence Rates
Fall 2008	50	32	64%	3,020	1,564	52%	284	100	35%
Fall 2009	64	26	41%	3,080	1,704	55%	336	138	41%
Fall 2010	69	38	55%	3,727	2,057	55%	307	137	45%
Fall 2011	58	30	52%	3,835	2,275	59%	295	145	49%
Fall 2012	58	32	55%	3,905	2,374	61%	291	144	49%
<b>Total/Average</b>	<b>299</b>	<b>158</b>	<b>53%</b>	<b>17,567</b>	<b>9,974</b>	<b>57%</b>	<b>1,513</b>	<b>664</b>	<b>44%</b>

Cohort	30 - 39			40 - 49			50 and >		
	Fall Enrolled Cohort	Annual Persistence Counts	Annual Persistence Rates	Fall Enrolled Cohort	Annual Persistence Counts	Annual Persistence Rates	Fall Enrolled Cohort	Annual Persistence Counts	Annual Persistence Rates
Fall 2008	230	76	33%	115	30	26%	74	20	27%
Fall 2009	247	101	41%	111	45	41%	85	20	24%
Fall 2010	238	93	39%	100	36	36%	63	24	38%
Fall 2011	209	96	46%	106	43	41%	49	15	31%
Fall 2012	182	83	46%	77	39	51%	63	21	33%
<b>Total/Average</b>	<b>1,106</b>	<b>449</b>	<b>41%</b>	<b>509</b>	<b>193</b>	<b>38%</b>	<b>334</b>	<b>100</b>	<b>30%</b>

Source: SDCCD Information System



## **Section III Student Completion**

# SDCCD Fact Book 2014

---

This section of the Fact Book contains information on various student completion outcomes which may be considered indirect assessments of student learning. The outcomes included in this section are: 1) Annual Successful Course Completion Rates, 2) Annual Retention Rates, 3) Annual GPA, 4) Annual Awards Conferred, and 5) Annual Transfer Volume. All of the information in this section includes five years of data by gender, age, and ethnicity. The following describes in detail each of the outcomes listed.

- 1) Successful Course Completion Rates. The first outcome reported in this section is successful course completion, or student success rate. For purposes of this report, the success rate is the percentage of students who complete a course with a grade of A, B, C, or P out of total official census enrollments. Tutoring, non-credit, and cancelled classes are excluded.
- 2) Retention Rates. The second outcome reported in this section is retention rate. For purposes of this report, the retention rate is the percentage of students who complete a course with a grade of A, B, C, D, F, P, NP, I or RD out of total official census enrollments. Tutoring and cancelled classes are excluded.
- 3) Annual GPA. The third outcome reported in this section is annual GPA. For purposes of this report, the annual GPA is the total grade point average of all students for a given academic year.
- 4) Annual Awards Conferred. The fourth outcome reported in this section is the annual awards conferred. For purposes of this report, the annual awards conferred are the total number of associate degrees, certificates, high school diplomas, and GED certificates awarded in a single academic year (summer, fall, and spring). *Note. Annual awards conferred that are reported in this Fact Book are considered preliminary data. Please see the upcoming Awards Conferred Supplement report for final annual awards conferred numbers.*
- 5) Annual Transfer Volume. The last outcome reported in this section is the number of students who transferred annually. For the purposes of this report, the annual transfer volume represents the total number of students who transferred to a 4-year institution and were enrolled at an SDCCD college at any time within six semesters prior to transferring (including stop outs). The student must also have completed 12 or more transferrable units from any one of the SDCCD credit colleges within six years prior to transferring to a 4-year institution. *Note: Transfer volume parameters were changed for this report. Final data is now reported for 2008/09 – 2012/13. Additionally, due to entry requirements at the CSU/UCs that delay transferring, the number of semesters prior to transferring was increased from three to six. Thus, totals will be different when comparing historical terms to previous editions of the Fact Book. Please see the 2014 SDCCD Transfer Report: A Longitudinal Perspective for comparable transfer volume numbers.*

# SDCCD Fact Book 2014

**Overall Success Rates:** The annual success rates of students from all colleges in the District remained relatively stable between 2009/10 and 2013/14, with a five-year average of 68%.

Figure 3.1. All Colleges Overall Success Rates

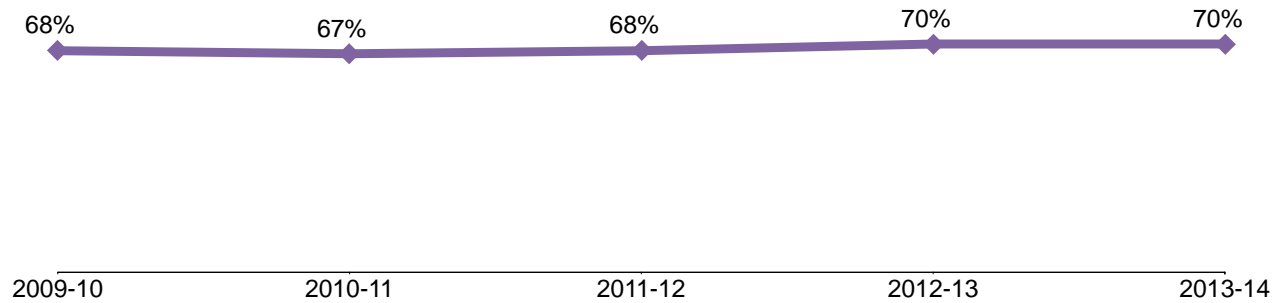


Table 3.1. All Colleges Overall Success Rates

	2009-10	2010-11	2011-12	2012-13	2013-14	% Difference 09/10 - 13/14	All Colleges Average 09/10 - 13/14
<b>Average</b>	68%	67%	68%	70%	70%	2%	68%

Source: SDCCD Information System

# SDCCD Fact Book 2014

**Success Rates by Gender:** On average, female and male students had comparable success rates between 2009/10 and 2013/14 (69% & 68%, respectively). The average success rate of female and male students was comparable to the average overall success rate for all colleges in the District (68%). The success rates for female and male students increased between 2009/10 and 2013/14 by two percentage points each.

Figure 3.2. All Colleges Success Rates by Gender

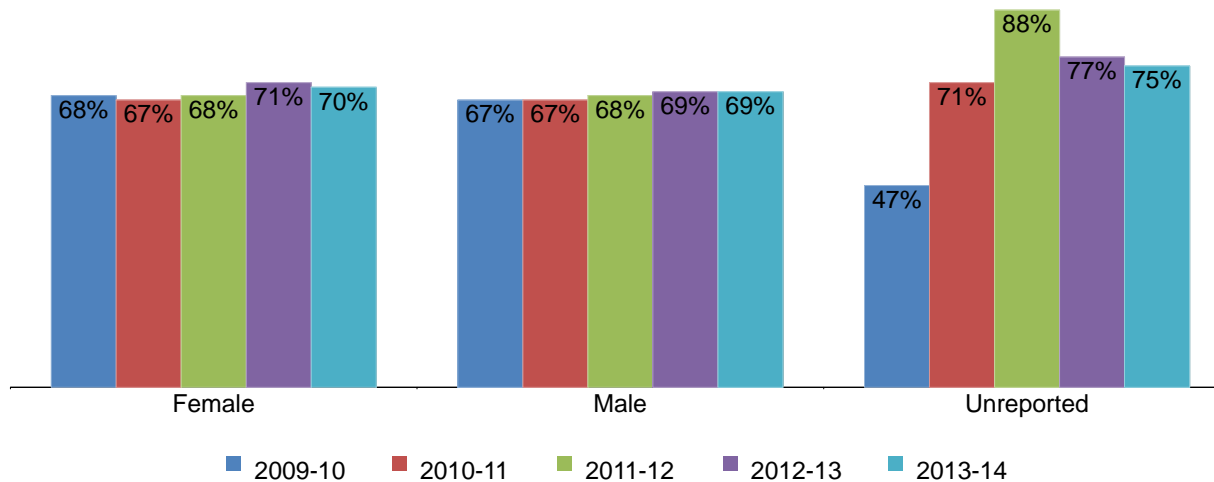


Table 3.2. All Colleges Success Rates by Gender

	2009-10	2010-11	2011-12	2012-13	2013-14	% Difference 09/10 - 13/14	All Colleges Average 09/10 - 13/14
Female	68%	67%	68%	71%	70%	2%	69%
Male	67%	67%	68%	69%	69%	2%	68%
Unreported	47%	71%	88%	77%	75%	28%	75%
<b>Average</b>	<b>68%</b>	<b>67%</b>	<b>68%</b>	<b>70%</b>	<b>70%</b>	<b>2%</b>	<b>68%</b>

Source: SDCCD Information System

Note. Unreported cells may have fewer than 25 students in a given year.

# SDCCD Fact Book 2014

**Success Rates by Ethnicity:** On average, the ethnic groups with the highest success rates between 2009/10 and 2013/14 were White students and Asian/Pacific Islander students (74% each), followed by Filipino students (71%). The average success rates of African American students and Latino students were lower than the average overall success rate for all colleges in the District (68%). The average success rates of White, Asian/Pacific Islander, and Filipino students exceeded this average. All reported ethnic groups showed increases in success rates between 2009/10 and 2013/14.

Figure 3.3. All Colleges Success Rates by Ethnicity

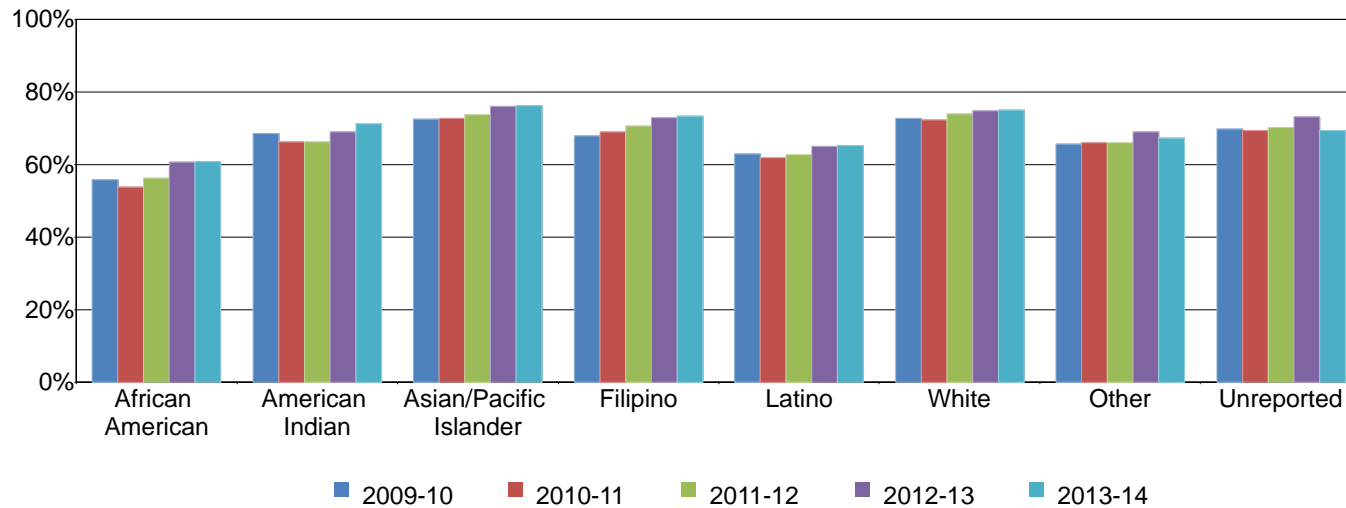


Table 3.3. All Colleges Success Rates by Ethnicity

	2009-10	2010-11	2011-12	2012-13	2013-14	% Difference 09/10 - 13/14	All Colleges Average 09/10 - 13/14
African American	56%	54%	56%	61%	61%	5%	57%
American Indian	69%	66%	66%	69%	71%	2%	68%
Asian/Pacific Islander	73%	73%	74%	76%	76%	3%	74%
Filipino	68%	69%	71%	73%	73%	5%	71%
Latino	63%	62%	63%	65%	65%	2%	64%
White	73%	72%	74%	75%	75%	2%	74%
Other	66%	66%	66%	69%	67%	1%	67%
Unreported	70%	70%	70%	73%	69%	-1%	70%
<b>Average</b>	<b>68%</b>	<b>67%</b>	<b>68%</b>	<b>70%</b>	<b>70%</b>	<b>2%</b>	<b>68%</b>

Source: SDCCD Information System

# SDCCD Fact Book 2014

**Success Rates by Age:** With the exception of students under age 18, a general trend between 2009/10 and 2013/14 showed as age increased so did the average success rate. Students under age 18 had the highest success rate on average (85%). The average success rates of most age groups were higher compared to the average success rate of the general student population for all colleges in the District (68%).

Figure 3.4. All Colleges Success Rates by Age

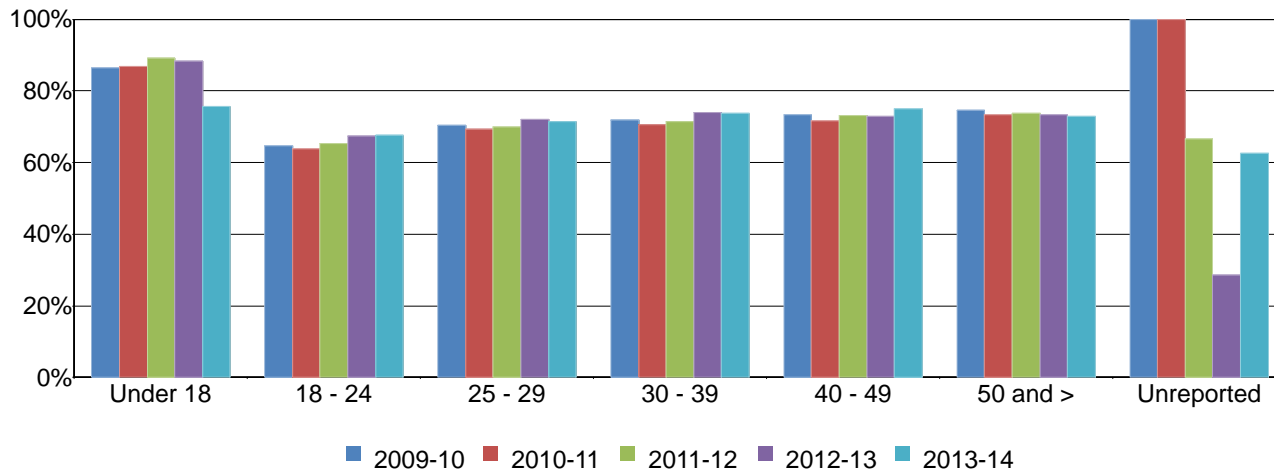


Table 3.4. All Colleges Success Rates by Age

	2009-10	2010-11	2011-12	2012-13	2013-14	% Difference 09/10 - 13/14	All Colleges Average 09/10 - 13/14
Under 18	86%	87%	89%	88%	76%	-10%	85%
18 - 24	65%	64%	65%	68%	68%	3%	66%
25 - 29	70%	69%	70%	72%	72%	2%	71%
30 - 39	72%	71%	71%	74%	74%	2%	72%
40 - 49	73%	72%	73%	73%	75%	2%	73%
50 and >	75%	73%	74%	73%	73%	-2%	74%
Unreported	100%	100%	67%	29%	63%	-37%	63%
<b>Average</b>	<b>68%</b>	<b>67%</b>	<b>68%</b>	<b>70%</b>	<b>70%</b>	<b>2%</b>	<b>68%</b>

Source: SDCCD Information System

Note. Unreported cells may have fewer than 25 students in a given year.

# SDCCD Fact Book 2014

**Overall Retention Rates:** The annual retention rates of students from all colleges in the District increased one percentage point, from 85% in 2009/10 to 86% in 2013/14, with a five-year average of 85%.

Figure 3.5. All Colleges Overall Retention Rates

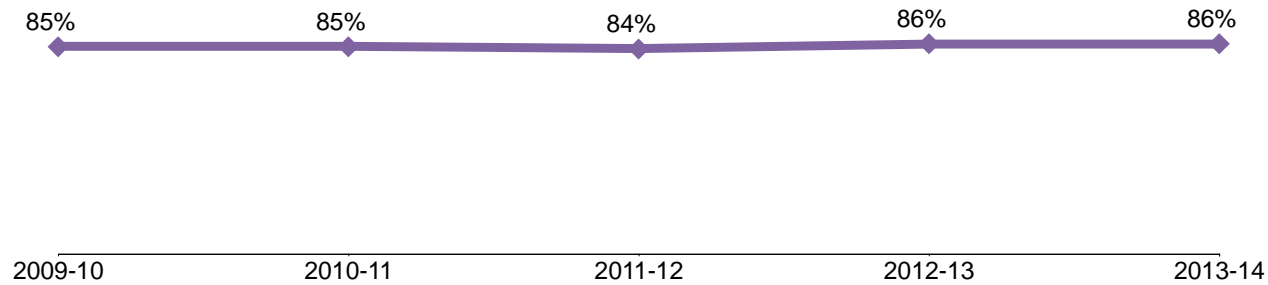


Table 3.5. All Colleges Overall Retention Rates

	2009-10	2010-11	2011-12	2012-13	2013-14	% Difference 09/10 - 13/14	All Colleges Average 09/10 - 13/14
<b>Average</b>	85%	85%	84%	86%	86%	1%	85%

Source: SDCCD Information System

# SDCCD Fact Book 2014

**Retention Rates by Gender:** The average retention rate for both female and male students is 85% each. The trend for both male and female students showed an increase between 2009/10 and 2013/14 by one percentage point each.

Figure 3.6. All Colleges Retention Rates by Gender

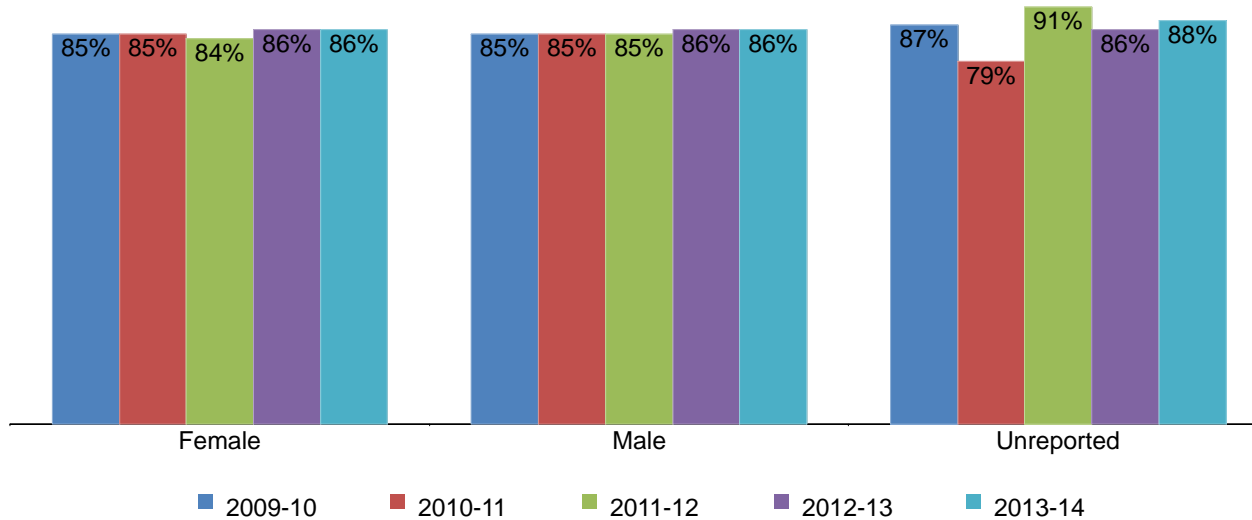


Table 3.6. All Colleges Retention Rates by Gender

	2009-10	2010-11	2011-12	2012-13	2013-14	% Difference 09/10 - 13/14	All Colleges Average 09/10 - 13/14
Female	85%	85%	84%	86%	86%	1%	85%
Male	85%	85%	85%	86%	86%	1%	85%
Unreported	87%	79%	91%	86%	88%	1%	86%
<b>Average</b>	<b>85%</b>	<b>85%</b>	<b>84%</b>	<b>86%</b>	<b>86%</b>	<b>1%</b>	<b>85%</b>

Source: SDCCD Information System

Note. Unreported cells may have fewer than 25 students in a given year.



# SDCCD Fact Book 2014

**Retention Rates by Ethnicity:** Between 2009/10 and 2013/14, the ethnic groups with the highest retention rates, on average, were Asian/Pacific Islander students (88%), and White and Filipino students (87% each). Latino students (84%), American Indian students (84%), and African American students (81%) were lower than the average retention rate of the general student population of all colleges in the District (85%). All ethnic groups except American Indian students showed an increase in retention rates between 2009/10 and 2013/14.

Figure 3.7. All Colleges Retention Rates by Ethnicity

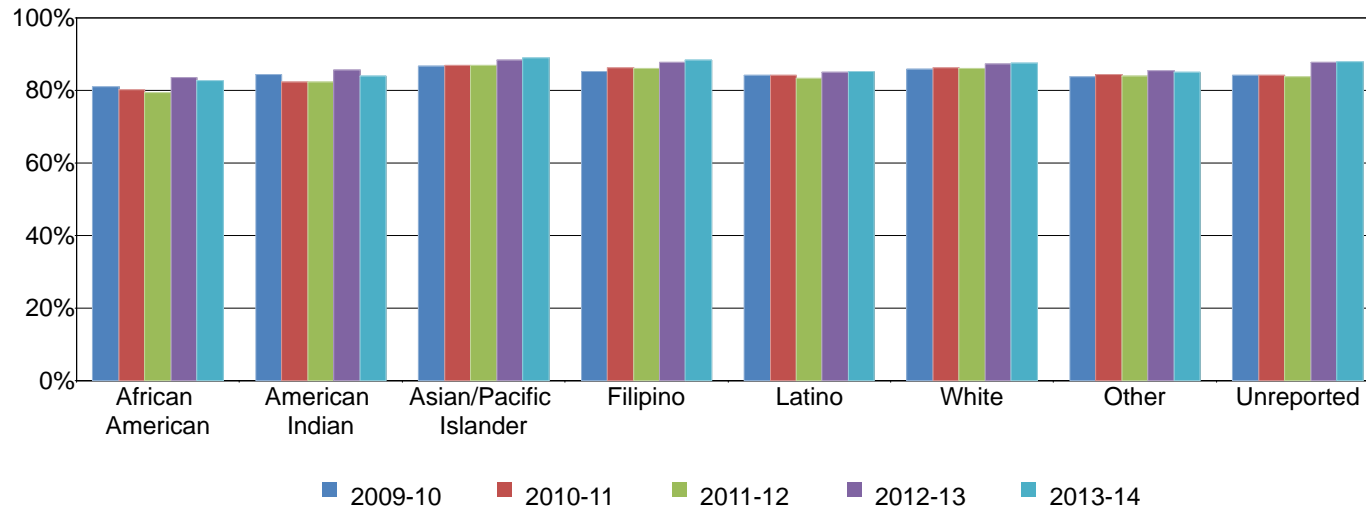


Table 3.7. All Colleges Retention Rates by Ethnicity

	2009-10	2010-11	2011-12	2012-13	2013-14	% Difference 09/10 - 13/14	All Colleges Average 09/10 - 13/14
African American	81%	80%	79%	83%	83%	2%	81%
American Indian	84%	82%	82%	86%	84%	0%	84%
Asian/Pacific Islander	87%	87%	87%	88%	89%	2%	88%
Filipino	85%	86%	86%	88%	88%	3%	87%
Latino	84%	84%	83%	85%	85%	1%	84%
White	86%	86%	86%	87%	88%	2%	87%
Other	84%	84%	84%	85%	85%	1%	84%
Unreported	84%	84%	84%	88%	88%	4%	85%
<b>Average</b>	<b>85%</b>	<b>85%</b>	<b>84%</b>	<b>86%</b>	<b>86%</b>	<b>1%</b>	<b>85%</b>

Source: SDCCD Information System

# SDCCD Fact Book 2014

**Retention Rates by Age:** Between 2009/10 and 2013/14, students under age 18 had the highest retention rates, on average (96%). All other reported age groups were 85%, which is comparable to the average retention rate of the general student population of all colleges in the District (85%).

Figure 3.8. All Colleges Retention Rates by Age

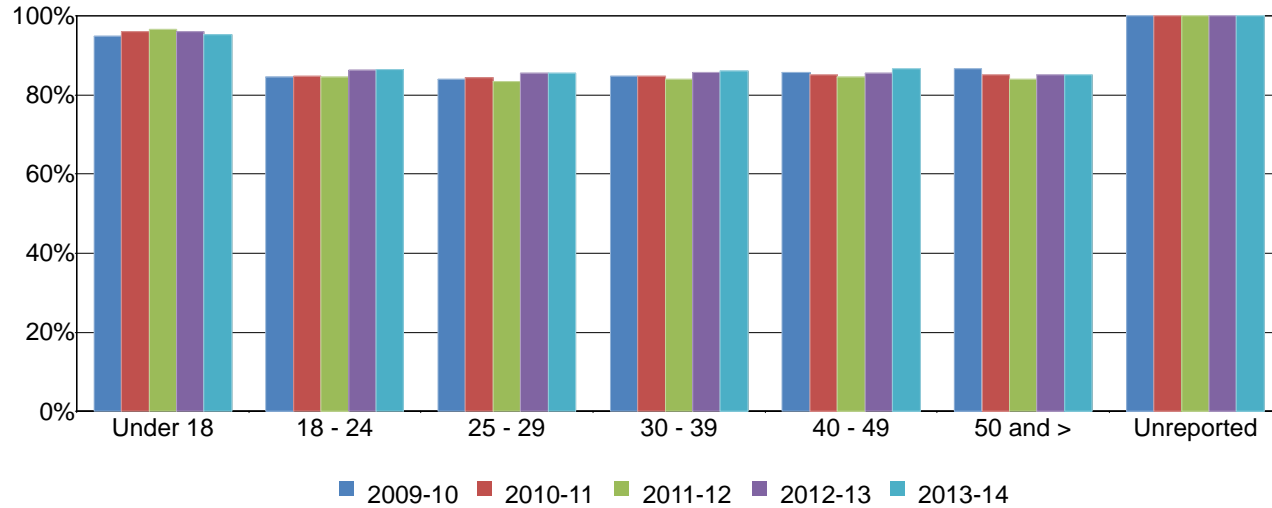


Table 3.8. All Colleges Retention Rates by Age

	2009-10	2010-11	2011-12	2012-13	2013-14	% Difference 09/10 - 13/14	All Colleges Average 09/10 - 13/14
Under 18	95%	96%	97%	96%	95%	0%	96%
18 - 24	85%	85%	85%	86%	86%	1%	85%
25 - 29	84%	84%	83%	86%	86%	2%	85%
30 - 39	85%	85%	84%	86%	86%	1%	85%
40 - 49	86%	85%	85%	86%	87%	1%	85%
50 and >	87%	85%	84%	85%	85%	-2%	85%
Unreported	100%	100%	100%	100%	100%	0%	100%
<b>Average</b>	<b>85%</b>	<b>85%</b>	<b>84%</b>	<b>86%</b>	<b>86%</b>	<b>1%</b>	<b>85%</b>

Source: SDCCD Information System

Note. Unreported cells may have fewer than 25 students in a given year.

# SDCCD Fact Book 2014

**Overall Annual GPA:** The annual GPA of students from all colleges in the District remained relatively stable between 2009/10 and 2013/14, with a five-year average of 2.65.

Figure 3.9. All Colleges Overall Annual GPA

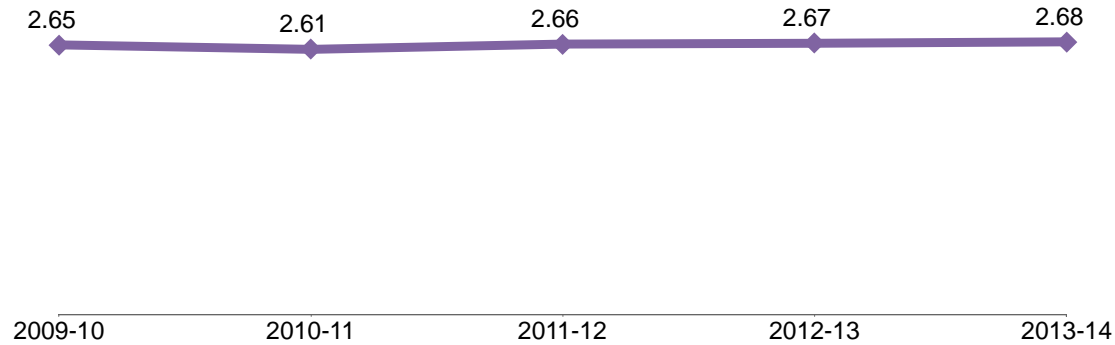


Table 3.9. All Colleges Overall Annual GPA

	2009-10	2010-11	2011-12	2012-13	2013-14	All Colleges Average 09/10 - 13/14
<b>Average</b>	2.65	2.61	2.66	2.67	2.68	2.65

Source: SDCCD Information System

# SDCCD Fact Book 2014

**Annual GPA by Gender:** Between 2009/10 and 2013/14, female students, on average, had slightly higher GPAs than their male student counterpart (2.70 & 2.61, respectively). The average annual GPA of female students was higher than the average annual GPA of the general student population for all colleges in the District (2.65), while the average annual GPA of male students was slightly lower than the same average.

Figure 3.10. All Colleges Annual GPA by Gender

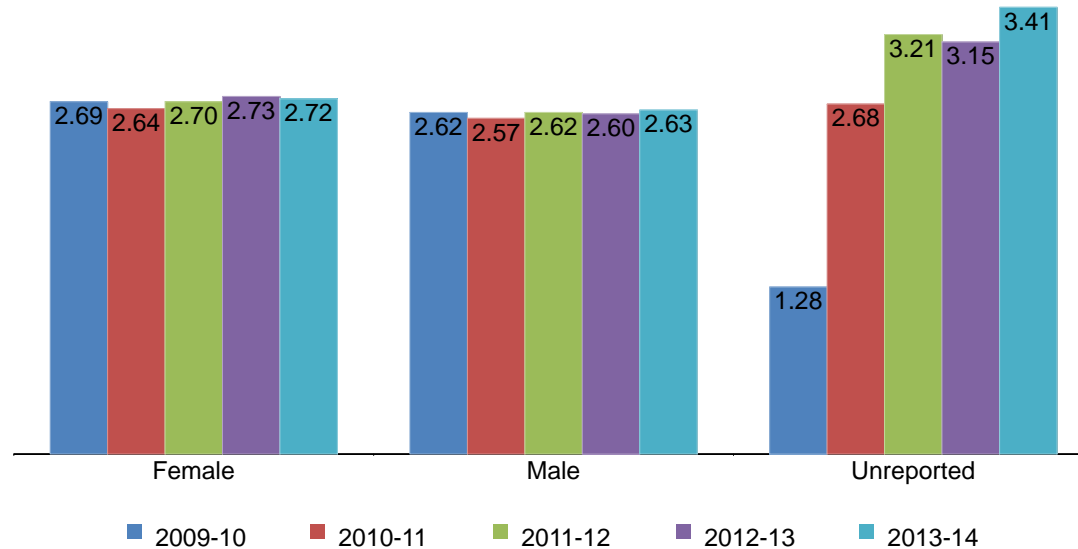


Table 3.10. All Colleges Annual GPA by Gender

	2009-10	2010-11	2011-12	2012-13	2013-14	All Colleges Average 08/09 - 12/13
Female	2.69	2.64	2.70	2.73	2.72	2.70
Male	2.62	2.57	2.62	2.60	2.63	2.61
Unreported	1.28	2.68	3.21	3.15	3.41	2.91
<b>Average</b>	<b>2.65</b>	<b>2.61</b>	<b>2.66</b>	<b>2.67</b>	<b>2.68</b>	<b>2.65</b>

Source: SDCCD Information System

Note. Unreported cells may have fewer than 25 students in a given year.

# SDCCD Fact Book 2014

**Annual GPA by Ethnicity:** Between 2009/10 and 2013/14, White students and Asian/Pacific Islander students had the highest GPAs on average (2.89 & 2.88, respectively). The average GPAs for Filipino students (2.65) and American Indian students (2.68) were comparable to the overall GPA of the general student population for all colleges in the District (2.65). The average annual GPAs for African American students (2.25) and Latino students (2.41) were lower than the same average.

Figure 3.11. All Colleges Annual GPA by Ethnicity

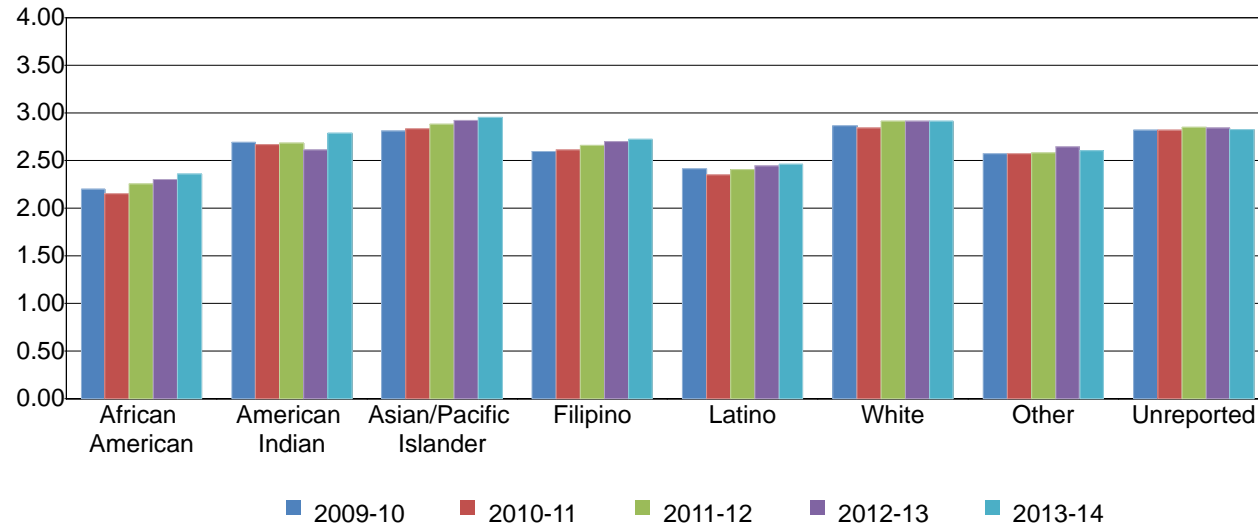


Table 3.11. All Colleges Annual GPA by Ethnicity

	2009-10	2010-11	2011-12	2012-13	2013-14	All Colleges Average 09/10 - 13/14
African American	2.20	2.15	2.25	2.30	2.36	2.25
American Indian	2.69	2.67	2.68	2.61	2.78	2.68
Asian/Pacific Islander	2.81	2.83	2.88	2.92	2.95	2.88
Filipino	2.59	2.61	2.65	2.70	2.72	2.65
Latino	2.41	2.35	2.40	2.44	2.46	2.41
White	2.87	2.84	2.91	2.91	2.92	2.89
Other	2.57	2.57	2.58	2.64	2.61	2.60
Unreported	2.81	2.81	2.85	2.84	2.83	2.82
<b>Average</b>	<b>2.65</b>	<b>2.61</b>	<b>2.66</b>	<b>2.67</b>	<b>2.68</b>	<b>2.65</b>

Source: SDCCD Information System

# SDCCD Fact Book 2014

**Annual GPA by Age:** With the exception of students under age 18, a general trend between 2009/10 and 2013/14 showed as age increased so did the average GPA. The average annual GPA of students between ages 18 and 24 (2.48) was lower than the average annual GPA of the general student population for all colleges in the District (2.65).

Figure 3.12. All Colleges Annual GPA by Age

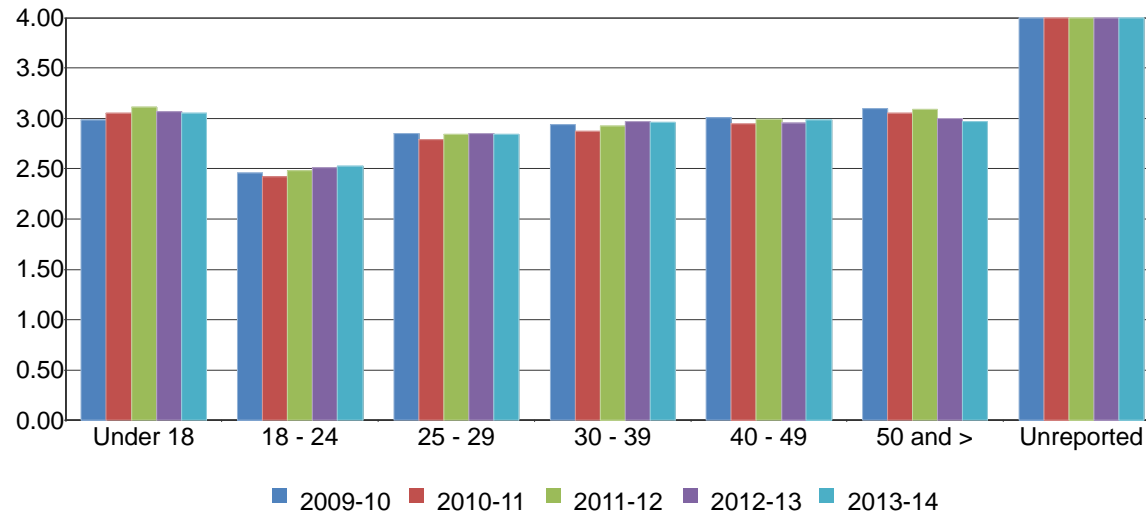


Table 3.12. All Colleges Annual GPA by Age

	2009-10	2010-11	2011-12	2012-13	2013-14	All Colleges Average 09/10 - 13/14
Under 18	2.99	3.05	3.11	3.06	3.05	3.05
18 - 24	2.46	2.42	2.48	2.51	2.53	2.48
25 - 29	2.85	2.79	2.84	2.85	2.84	2.83
30 - 39	2.94	2.87	2.93	2.97	2.96	2.93
40 - 49	3.01	2.95	2.99	2.96	2.98	2.98
50 and >	3.10	3.05	3.09	3.00	2.97	3.04
Unreported	4.00	4.00	4.00	4.00	4.00	4.00
<b>Average</b>	<b>2.65</b>	<b>2.61</b>	<b>2.66</b>	<b>2.67</b>	<b>2.68</b>	<b>2.65</b>

Source: SDCCD Information System

Note. Unreported cells may have fewer than 25 students in a given year.

# SDCCD Fact Book 2014

**Annual Awards Conferred:** On average, 35% of the total awards conferred districtwide were associate degrees. Overall, there was a 5% increase in the number of associate degrees awarded between 2009/10 and 2013/14, but an 18% decrease in the number of certificates requiring 60 units or more, and a 10% decrease in the number of certificates that require 30 to 59 units. However, Continuing Education certificates of completion increased notably, between 2009/10 and 2013/14, largely due to revisions that were made to the reporting procedures.

Figure 3.13. SDCCD Overall Annual Awards Conferred

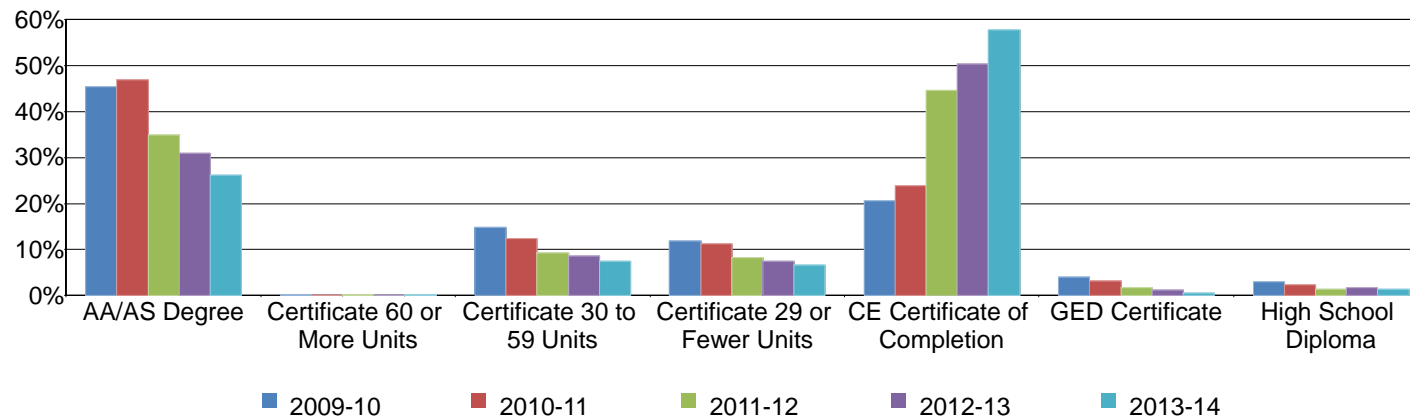


Table 3.13. SDCCD Overall Annual Awards Conferred

	2009-10		2010-11		2011-12		2012-13		2013-14		% Change 09/10-13/14	Districtwide Average 09/10-13/14
AA/AS Degree	2,081	45%	2,182	47%	2,370	35%	2,219	31%	2,176	26%	5%	35%
Certificate 60 or More Units	11	0%	4	0%	16	0%	4	0%	9	0%	-18%	0%
Certificate 30 to 59 Units	681	15%	574	12%	623	9%	612	9%	611	7%	-10%	10%
Certificate 29 or Fewer Units	540	12%	524	11%	558	8%	527	7%	553	7%	2%	9%
CE Certificate of Completion	942	21%	1,113	24%	3,028	45%	3,606	50%	4,792	58%	409%	43%
GED Certificate	184	4%	148	3%	109	2%	79	1%	46	1%	-75%	2%
High School Diploma	137	3%	111	2%	93	1%	119	2%	115	1%	-16%	2%
<b>Total</b>	<b>4,576</b>	<b>100%</b>	<b>4,656</b>	<b>100%</b>	<b>6,797</b>	<b>100%</b>	<b>7,166</b>	<b>100%</b>	<b>8,302</b>	<b>100%</b>	<b>81%</b>	<b>100%</b>

Source: SDCCD Information System

Note. In 2011/12, reporting procedures for CE Certificates of Completion were revised.

# SDCCD Fact Book 2014

**Annual Awards Conferred by Gender:** Of the total awards conferred districtwide, female students (55%) received more associate degrees, on average, than their male student counterpart (45%) between 2009/10 and 2013/14. Both female and male students displayed an increased trend (2% & 8%, respectively) in the number of associate degrees awarded within all colleges in the District between 2009/10 and 2013/14. During this same period, female students received more Continuing Education certificates of completion, on average, than their male student counterpart (56% & 44%; respectively).

Figure 3.14.1. SDCCD Annual AA/AS Degrees by Gender

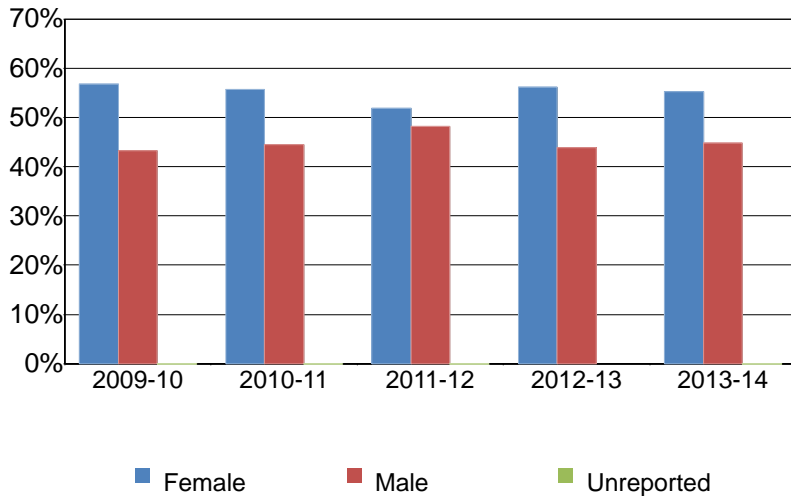


Figure 3.14.2. SDCCD Annual Certificates 60 or More Units by Gender

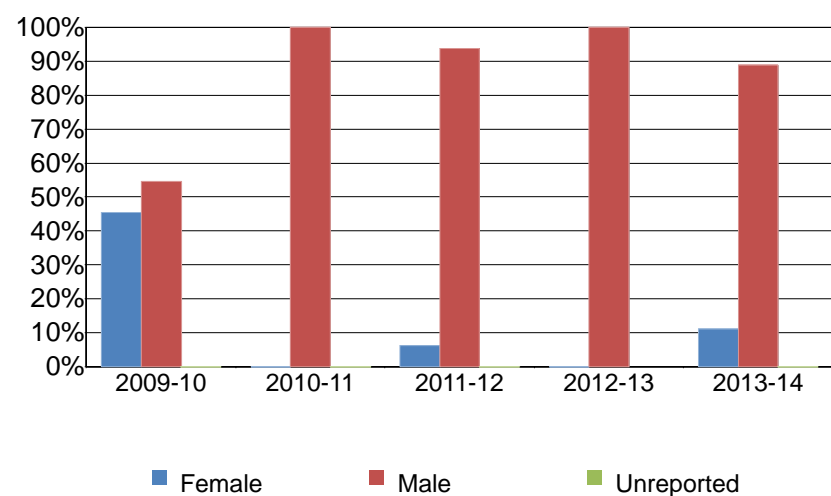


Figure 3.14.3. SDCCD Annual Certificates 30 to 59 Units by Gender

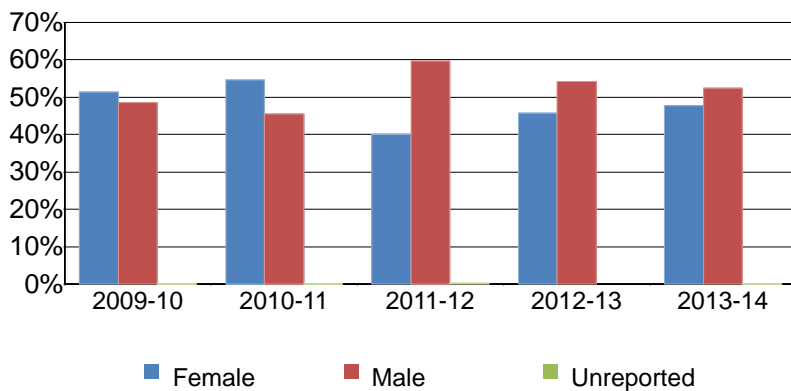


Figure 3.14.4. SDCCD Annual Certificates 29 or Fewer Units by Gender

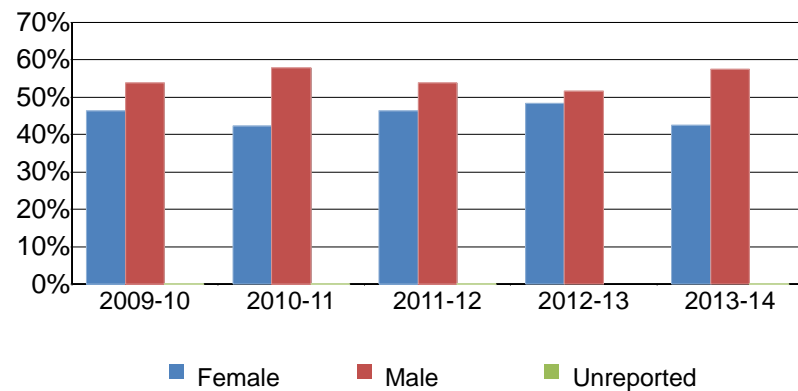




Figure 3.14.5. SDCCD Annual CE Certificates of Completion by Gender

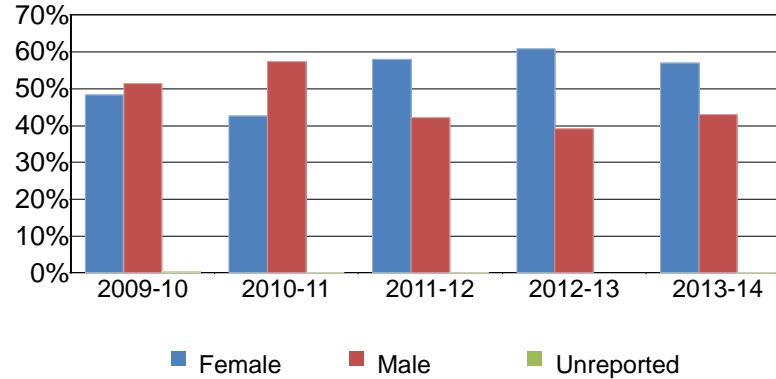


Figure 3.14.6 SDCCD Annual GED Certificates by Gender

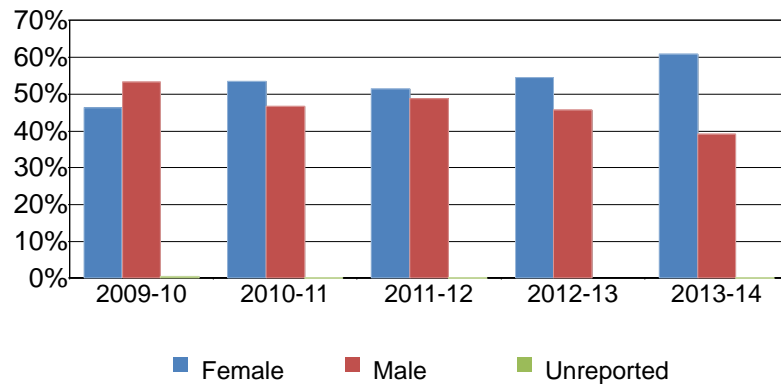
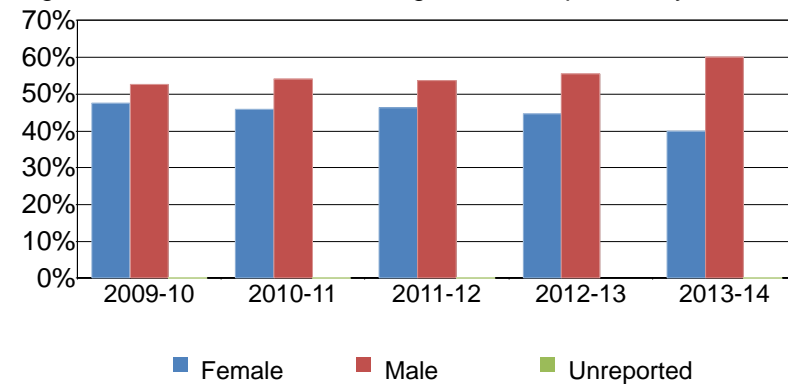


Figure 3.14.7. SDCCD Annual High School Diplomas by Gender



# SDCCD Fact Book 2014

Table 3.14. SDCCD Annual Awards Conferred by Gender

		2009-10		2010-11		2011-12		2012-13		2013-14		% Change 09/10-13/14	Districtwide Average 09/10-13/14
AA/AS Degree	Female	1,181	57%	1,213	56%	1,227	52%	1,245	56%	1,201	55%	2%	55%
	Male	900	43%	969	44%	1,142	48%	974	44%	974	45%	8%	45%
	Unreported	0	0%	0	0%	1	0%	0	0%	1	0%	---	0%
	<b>Total</b>	<b>2,081</b>	<b>100%</b>	<b>2,182</b>	<b>100%</b>	<b>2,370</b>	<b>100%</b>	<b>2,219</b>	<b>100%</b>	<b>2,176</b>	<b>100%</b>	<b>5%</b>	<b>100%</b>
Certificate 60 or More Units	Female	5	45%	0	0%	1	6%	0	0%	1	11%	-80%	16%
	Male	6	55%	4	100%	15	94%	4	100%	8	89%	33%	84%
	<b>Total</b>	<b>11</b>	<b>100%</b>	<b>4</b>	<b>100%</b>	<b>16</b>	<b>100%</b>	<b>4</b>	<b>100%</b>	<b>9</b>	<b>100%</b>	<b>-18%</b>	<b>100%</b>
Certificate 30 to 59 Units	Female	350	51%	313	55%	250	40%	280	46%	291	48%	-17%	48%
	Male	331	49%	261	45%	372	60%	332	54%	320	52%	-3%	52%
	Unreported	0	0%	0	0%	1	0%	0	0%	0	0%	---	0%
	<b>Total</b>	<b>681</b>	<b>100%</b>	<b>574</b>	<b>100%</b>	<b>623</b>	<b>100%</b>	<b>612</b>	<b>100%</b>	<b>611</b>	<b>100%</b>	<b>-10%</b>	<b>100%</b>
Certificate 29 or Fewer Units	Female	250	46%	221	42%	258	46%	255	48%	235	42%	-6%	45%
	Male	290	54%	303	58%	300	54%	272	52%	318	58%	10%	55%
	<b>Total</b>	<b>540</b>	<b>100%</b>	<b>524</b>	<b>100%</b>	<b>558</b>	<b>100%</b>	<b>527</b>	<b>100%</b>	<b>553</b>	<b>100%</b>	<b>2%</b>	<b>100%</b>
CE Certificate of Completion	Female	455	48%	474	43%	1,753	58%	2,197	61%	2,732	57%	500%	56%
	Male	485	51%	638	57%	1,274	42%	1,409	39%	2,060	43%	325%	44%
	Unreported	2	0%	1	0%	1	0%	0	0%	0	0%	-100%	0%
	<b>Total</b>	<b>942</b>	<b>100%</b>	<b>1,113</b>	<b>100%</b>	<b>3,028</b>	<b>100%</b>	<b>3,606</b>	<b>100%</b>	<b>4,792</b>	<b>100%</b>	<b>409%</b>	<b>100%</b>
GED Certificate	Female	85	46%	79	53%	56	51%	43	54%	28	61%	-67%	51%
	Male	98	53%	69	47%	53	49%	36	46%	18	39%	-82%	48%
	Unreported	1	1%	0	0%	0	0%	0	0%	0	0%	-100%	0%
	<b>Total</b>	<b>184</b>	<b>100%</b>	<b>148</b>	<b>100%</b>	<b>109</b>	<b>100%</b>	<b>79</b>	<b>100%</b>	<b>46</b>	<b>100%</b>	<b>-75%</b>	<b>100%</b>
High School Diploma	Female	65	47%	51	46%	43	46%	53	45%	46	40%	-29%	45%
	Male	72	53%	60	54%	50	54%	66	55%	69	60%	-4%	55%
	<b>Total</b>	<b>137</b>	<b>100%</b>	<b>111</b>	<b>100%</b>	<b>93</b>	<b>100%</b>	<b>119</b>	<b>100%</b>	<b>115</b>	<b>100%</b>	<b>-16%</b>	<b>100%</b>
<b>Grand Total</b>	<b>4,576</b>	<b>100%</b>	<b>4,656</b>	<b>100%</b>	<b>6,797</b>	<b>100%</b>	<b>7,166</b>	<b>100%</b>	<b>8,302</b>	<b>100%</b>	<b>81%</b>	<b>100%</b>	

Source: SDCCD Information System

Note. In 2011/12, reporting procedures for CE Certificates of Completion were revised.

# SDCCD Fact Book 2014

**Annual Awards Conferred by Ethnicity:** Consistent with the enrollment demographics, on average, White students received the greatest number of associate degrees within all colleges in the District (37%). Latino students received the greatest number of certificates of completion at Continuing Education (39%). The Latino student group (51%) had the greatest increase in the number of associate degrees conferred within all colleges in the District between 2009/10 and 2013/14. The number of certificates of completion conferred at Continuing Education increased for all ethnic groups except American Indians between 2009/10 and 2013/14.

Figure 3.15.1. SDCCD Annual AA/AS Degree by Ethnicity

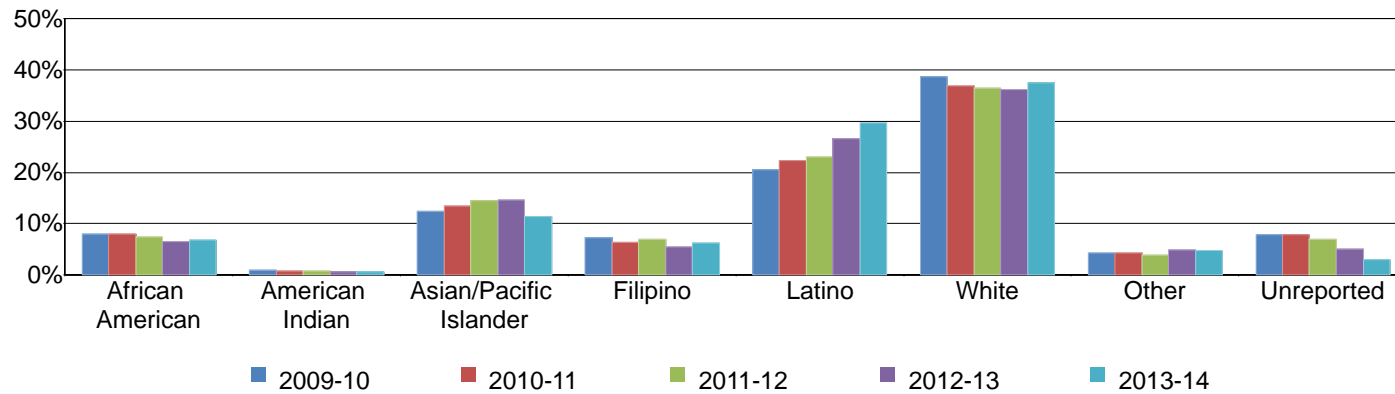
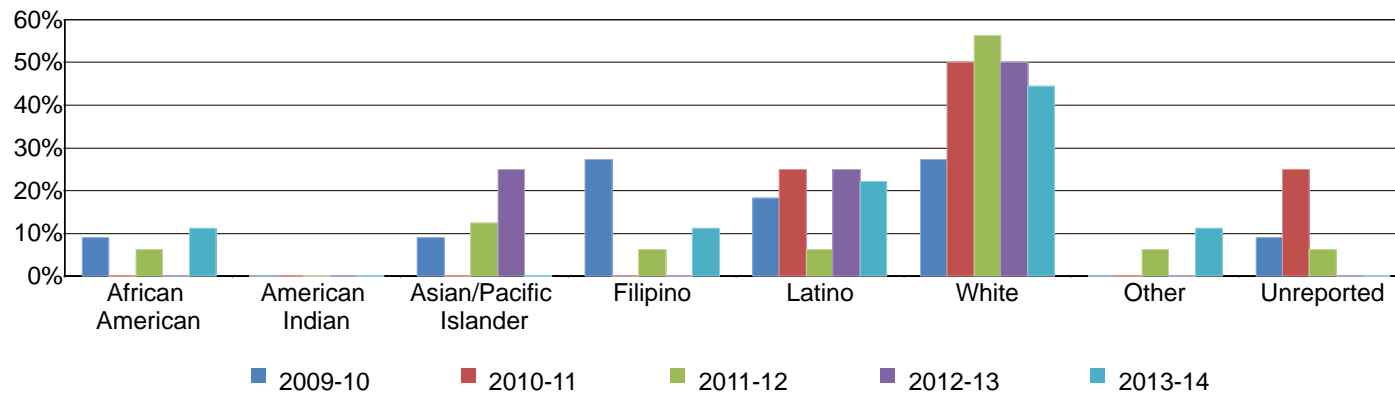


Figure 3.15.2. SDCCD Annual Certificates 60 or More Units by Ethnicity



# SDCCD Fact Book 2014

Figure 3.15.3. SDCCD Annual Certificates 30 to 59 Units by Ethnicity

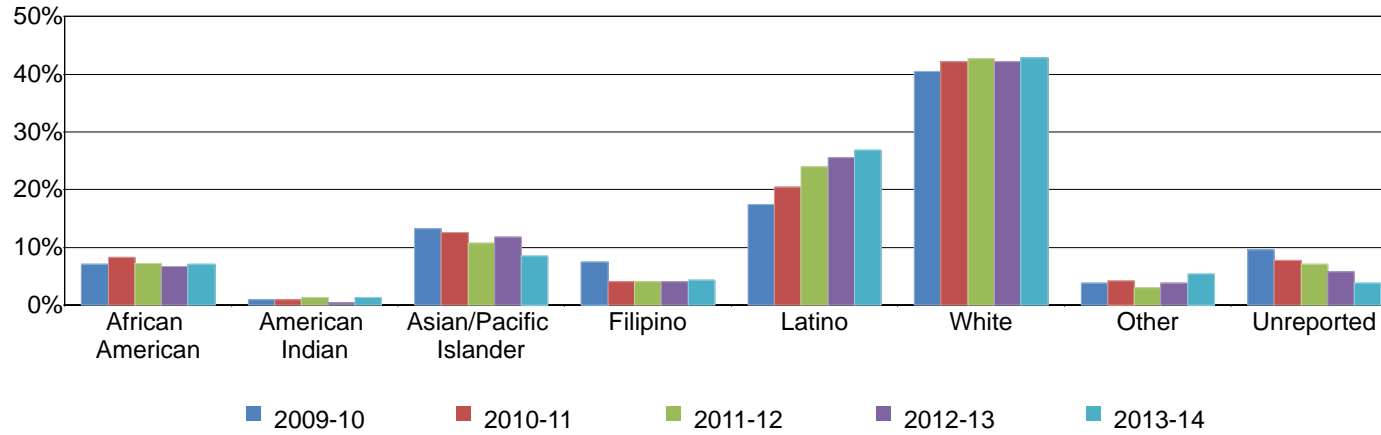
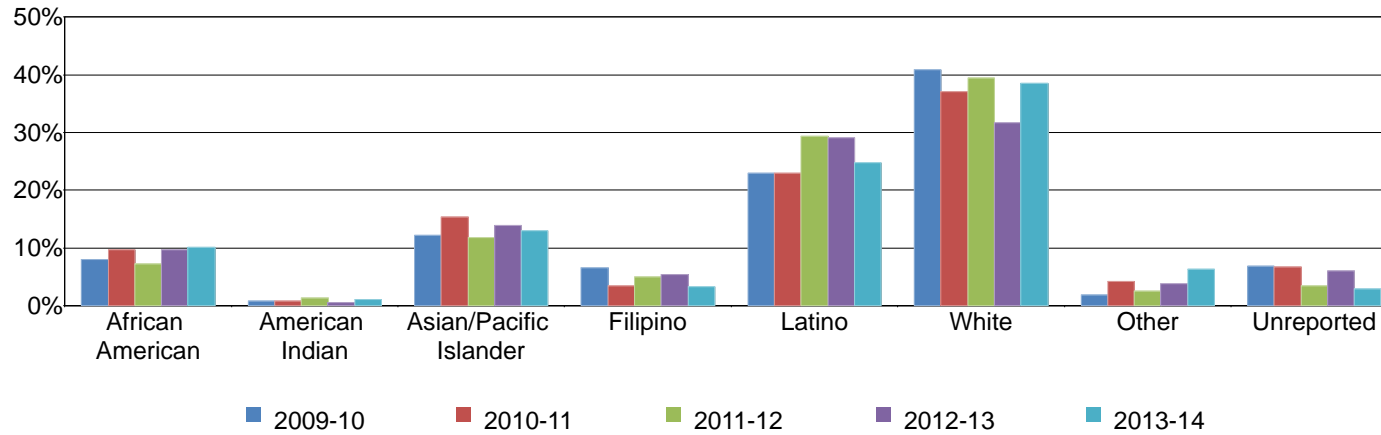


Figure 3.15.4. SDCCD Annual Certificates 29 or Fewer Units by Ethnicity



# SDCCD Fact Book 2014

Figure 3.15.5. SDCCD Annual CE Certificates of Completion by Ethnicity

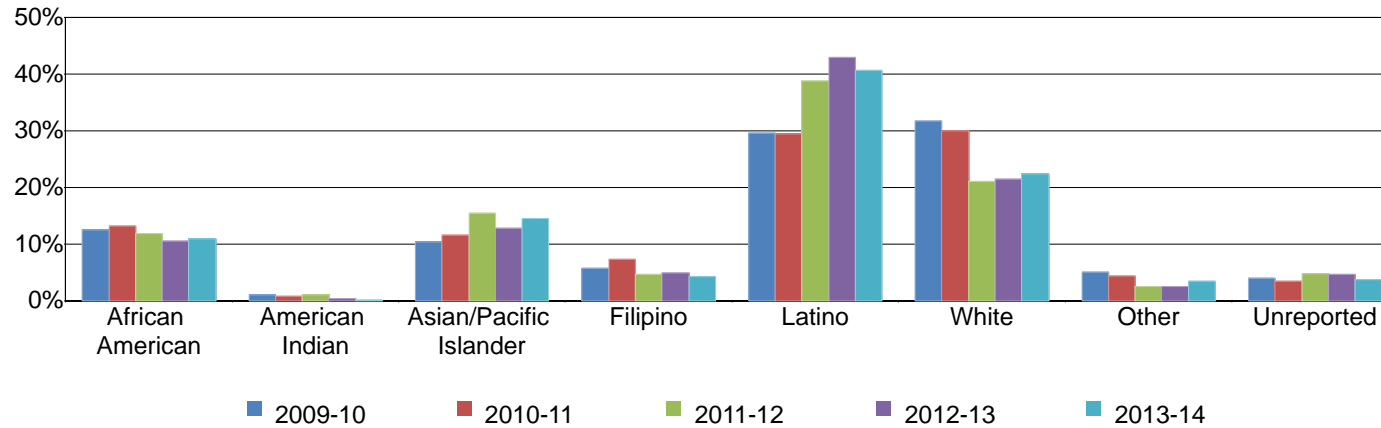


Figure 3.15.6. SDCCD Annual GED Certificates by Ethnicity

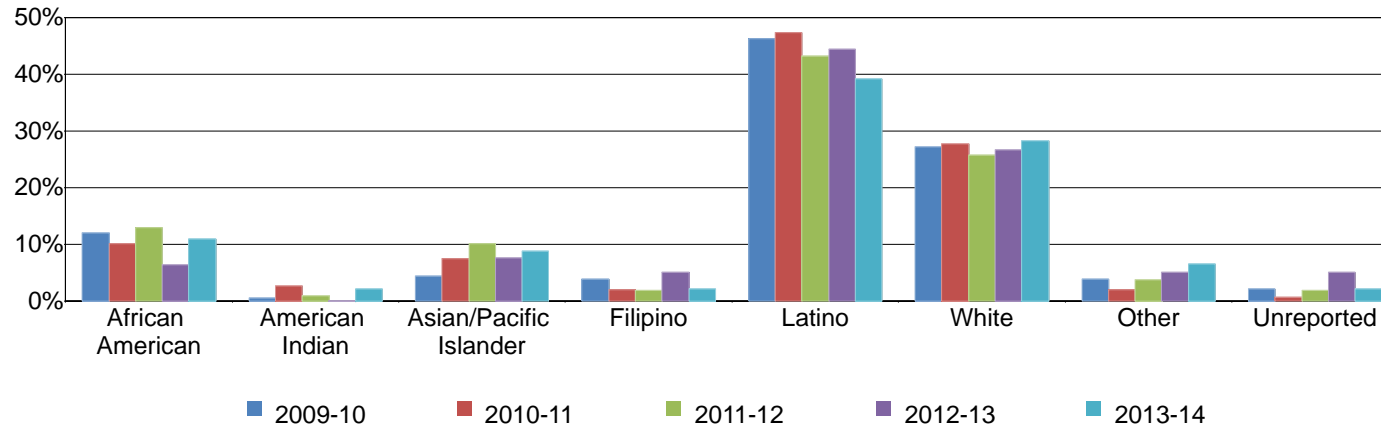
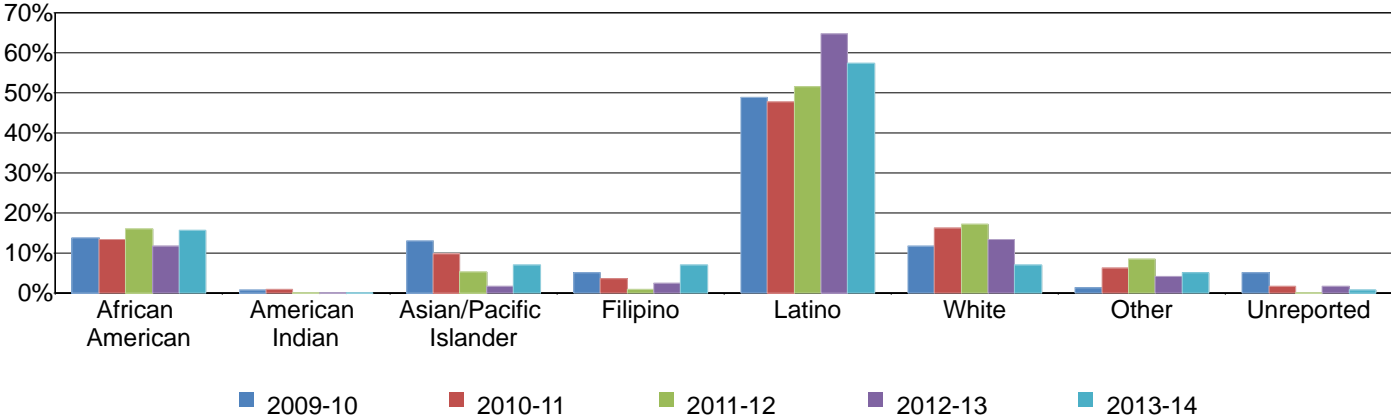


Figure 3.15.7. SDCCD Annual High School Diplomas by Ethnicity



# SDCCD Fact Book 2014

Table 3.15. SDCCD Annual Awards Conferred by Ethnicity

		2009-10		2010-11		2011-12		2012-13		2013-14		% Change 09/10-13/14	Districtwide Average 09/10-13/14
AA/AS Degree	African American	167	8%	176	8%	175	7%	146	7%	147	7%	-12%	7%
	American Indian	20	1%	16	1%	20	1%	15	1%	15	1%	-25%	1%
	Asian/Pacific Islander	257	12%	293	13%	344	15%	325	15%	249	11%	-3%	13%
	Filipino	151	7%	138	6%	165	7%	121	5%	136	6%	-10%	6%
	Latino	427	21%	487	22%	545	23%	590	27%	645	30%	51%	24%
	White	805	39%	806	37%	863	36%	803	36%	814	37%	1%	37%
	Other	91	4%	95	4%	93	4%	108	5%	105	5%	15%	4%
	Unreported	163	8%	171	8%	165	7%	111	5%	65	3%	-60%	6%
	<b>Total</b>	<b>2,081</b>	<b>100%</b>	<b>2,182</b>	<b>100%</b>	<b>2,370</b>	<b>100%</b>	<b>2,219</b>	<b>100%</b>	<b>2,176</b>	<b>100%</b>	<b>5%</b>	<b>100%</b>
Certificate 60 or More Units	African American	1	9%	0	0%	1	6%	0	0%	1	11%	0%	7%
	Asian/Pacific Islander	1	9%	0	0%	2	13%	1	25%	0	0%	-100%	9%
	Filipino	3	27%	0	0%	1	6%	0	0%	1	11%	-67%	11%
	Latino	2	18%	1	25%	1	6%	1	25%	2	22%	0%	16%
	White	3	27%	2	50%	9	56%	2	50%	4	44%	33%	45%
	Other	0	0%	0	0%	1	6%	0	0%	1	11%	---	5%
	Unreported	1	9%	1	25%	1	6%	0	0%	0	0%	-100%	7%
	<b>Total</b>	<b>11</b>	<b>100%</b>	<b>4</b>	<b>100%</b>	<b>16</b>	<b>100%</b>	<b>4</b>	<b>100%</b>	<b>9</b>	<b>100%</b>	<b>-18%</b>	<b>100%</b>

Source: SDCCD Information System

# SDCCD Fact Book 2014

Table 3.15. SDCCD Annual Awards Conferred by Ethnicity (continued)

		2009-10		2010-11		2011-12		2012-13		2013-14		% Change 09/10-13/14	Districtwide Average 09/10-13/14
Certificate 30 to 59 Units	African American	48	7%	47	8%	45	7%	41	7%	43	7%	-10%	7%
	American Indian	6	1%	5	1%	8	1%	2	0%	8	1%	33%	1%
	Asian/Pacific Islander	90	13%	72	13%	67	11%	72	12%	52	9%	-42%	11%
	Filipino	51	7%	23	4%	25	4%	25	4%	26	4%	-49%	5%
	Latino	119	17%	117	20%	149	24%	156	25%	164	27%	38%	23%
	White	276	41%	242	42%	266	43%	258	42%	262	43%	-5%	42%
	Other	26	4%	24	4%	19	3%	23	4%	33	5%	27%	4%
	Unreported	65	10%	44	8%	44	7%	35	6%	23	4%	-65%	7%
<b>Total</b>	<b>681</b>	<b>100%</b>	<b>574</b>	<b>100%</b>	<b>623</b>	<b>100%</b>	<b>612</b>	<b>100%</b>	<b>611</b>	<b>100%</b>	<b>-10%</b>	<b>100%</b>	
Certificate 29 or Fewer Units	African American	43	8%	51	10%	40	7%	51	10%	56	10%	30%	9%
	American Indian	4	1%	4	1%	7	1%	3	1%	6	1%	50%	1%
	Asian/Pacific Islander	66	12%	80	15%	66	12%	73	14%	72	13%	9%	13%
	Filipino	35	6%	18	3%	28	5%	28	5%	18	3%	-49%	5%
	Latino	124	23%	120	23%	164	29%	153	29%	137	25%	10%	26%
	White	221	41%	194	37%	220	39%	167	32%	213	39%	-4%	38%
	Other	10	2%	22	4%	14	3%	20	4%	35	6%	250%	4%
	Unreported	37	7%	35	7%	19	3%	32	6%	16	3%	-57%	5%
<b>Total</b>	<b>540</b>	<b>100%</b>	<b>524</b>	<b>100%</b>	<b>558</b>	<b>100%</b>	<b>527</b>	<b>100%</b>	<b>553</b>	<b>100%</b>	<b>2%</b>	<b>100%</b>	

Source: SDCCD Information System



# SDCCD Fact Book 2014

Table 3.15. SDCCD Annual Awards Conferred by Ethnicity (continued)

		2009-10		2010-11		2011-12		2012-13		2013-14		% Change 09/10-13/14	Districtwide Average 09/10-13/14
CE Certificate of Completion	African American	118	13%	147	13%	359	12%	378	10%	522	11%	342%	11%
	American Indian	10	1%	9	1%	30	1%	14	0%	8	0%	-20%	1%
	Asian/Pacific Islander	98	10%	129	12%	468	15%	460	13%	696	15%	610%	14%
	Filipino	54	6%	82	7%	142	5%	175	5%	204	4%	278%	5%
	Latino	278	30%	327	29%	1,173	39%	1,548	43%	1,949	41%	601%	39%
	White	299	32%	333	30%	636	21%	773	21%	1,072	22%	259%	23%
	Other	47	5%	48	4%	75	2%	89	2%	162	3%	245%	3%
	Unreported	38	4%	38	3%	145	5%	169	5%	179	4%	371%	4%
<b>Total</b>	<b>942</b>	<b>100%</b>	<b>1,113</b>	<b>100%</b>	<b>3,028</b>	<b>100%</b>	<b>3,606</b>	<b>100%</b>	<b>4,792</b>	<b>100%</b>	<b>409%</b>	<b>100%</b>	
GED Certificate	African American	22	12%	15	10%	14	13%	5	6%	5	11%	-77%	11%
	American Indian	1	1%	4	3%	1	1%	0	0%	1	2%	0%	1%
	Asian/Pacific Islander	8	4%	11	7%	11	10%	6	8%	4	9%	-50%	7%
	Filipino	7	4%	3	2%	2	2%	4	5%	1	2%	-86%	3%
	Latino	85	46%	70	47%	47	43%	35	44%	18	39%	-79%	45%
	White	50	27%	41	28%	28	26%	21	27%	13	28%	-74%	27%
	Other	7	4%	3	2%	4	4%	4	5%	3	7%	-57%	4%
	Unreported	4	2%	1	1%	2	2%	4	5%	1	2%	-75%	2%
<b>Total</b>	<b>184</b>	<b>100%</b>	<b>148</b>	<b>100%</b>	<b>109</b>	<b>100%</b>	<b>79</b>	<b>100%</b>	<b>46</b>	<b>100%</b>	<b>-75%</b>	<b>100%</b>	
High School Diploma	African American	19	14%	15	14%	15	16%	14	12%	18	16%	-5%	14%
	American Indian	1	1%	1	1%	0	0%	0	0%	0	0%	-100%	0%
	Asian/Pacific Islander	18	13%	11	10%	5	5%	2	2%	8	7%	-56%	8%
	Filipino	7	5%	4	4%	1	1%	3	3%	8	7%	14%	4%
	Latino	67	49%	53	48%	48	52%	77	65%	66	57%	-1%	54%
	White	16	12%	18	16%	16	17%	16	13%	8	7%	-50%	13%
	Other	2	1%	7	6%	8	9%	5	4%	6	5%	200%	5%
	Unreported	7	5%	2	2%	0	0%	2	2%	1	1%	-86%	2%
<b>Total</b>	<b>137</b>	<b>100%</b>	<b>111</b>	<b>100%</b>	<b>93</b>	<b>100%</b>	<b>119</b>	<b>100%</b>	<b>115</b>	<b>100%</b>	<b>-16%</b>	<b>100%</b>	
<b>Grand Total</b>	<b>4,576</b>	<b>100%</b>	<b>4,656</b>	<b>100%</b>	<b>6,797</b>	<b>100%</b>	<b>7,166</b>	<b>100%</b>	<b>8,302</b>	<b>100%</b>	<b>81%</b>	<b>100%</b>	

Source: SDCCD Information System

Note. In 2011/12, reporting procedures for CE Certificates of Completion were revised.

# SDCCD Fact Book 2014

**Annual Awards Conferred by Age:** Between 2009/10 and 2013/14, on average, students between ages 18 and 24 received the highest number of associate degrees (39%), followed by students between ages 25 and 29 (27%), within all colleges in the District. At Continuing Education, on average, students between ages 30 and 39 (27%) received the highest number of certificates of completion, followed by students age 50 and over (22%), and students between ages 40 and 49 (21%).

Figure 3.16.1. SDCCD Annual AA/AS Degrees by Age

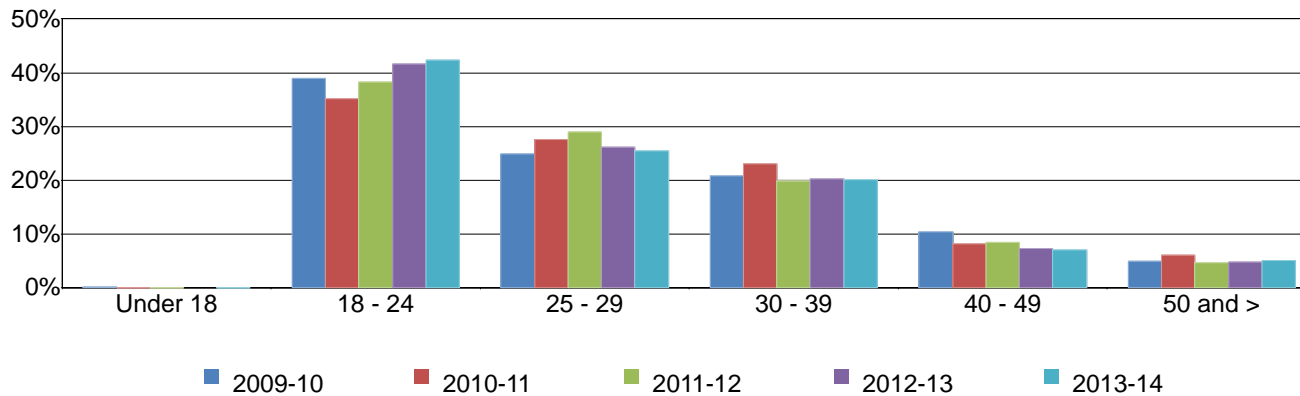


Figure 3.16.2. SDCCD Annual Certificates 60 or More Units by Age

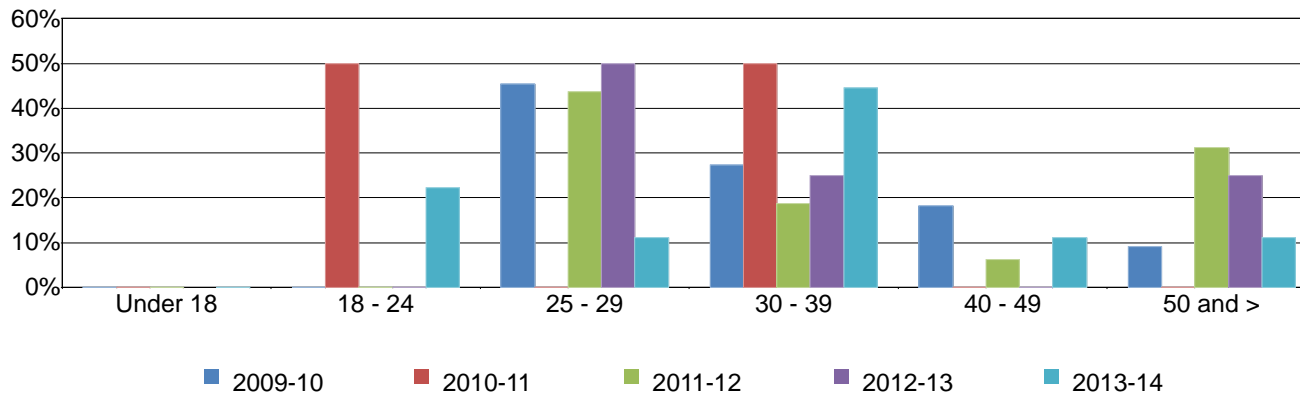


Figure 3.16.3. SDCCD Annual Certificates 30 to 59 Units by Age

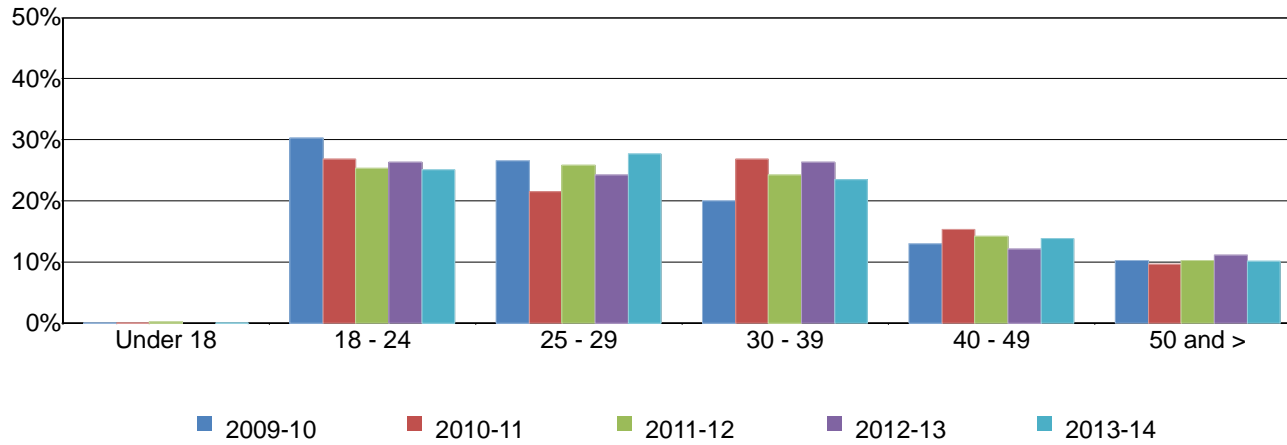


Figure 3.16.4. SDCCD Annual Certificates 29 or Fewer Units by Age

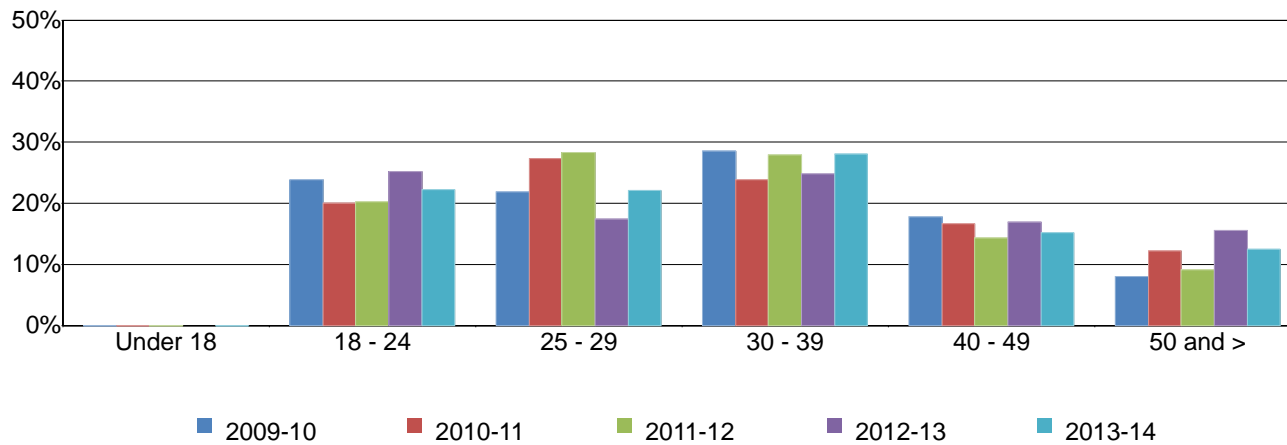


Figure 3.16.5. SDCCCD Annual CE Certificates of Completion by Age

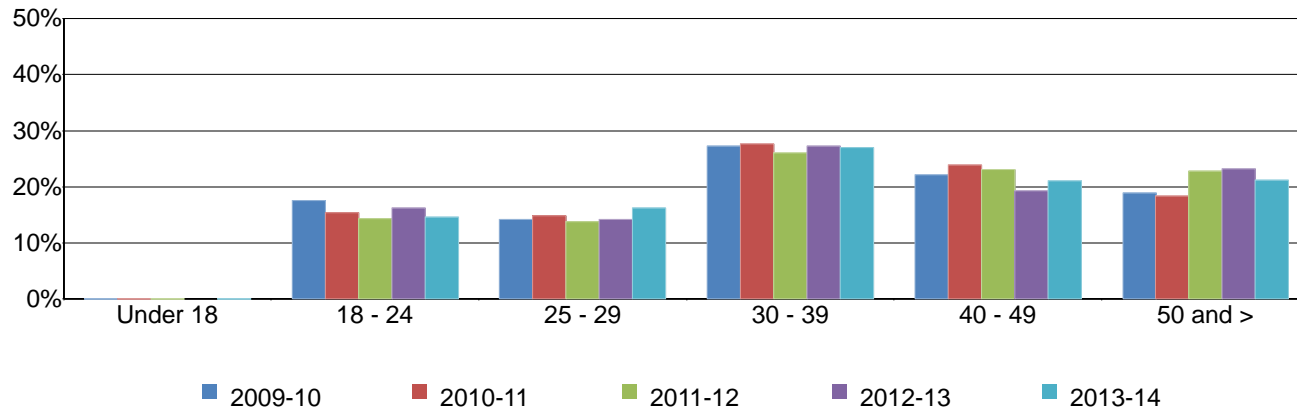
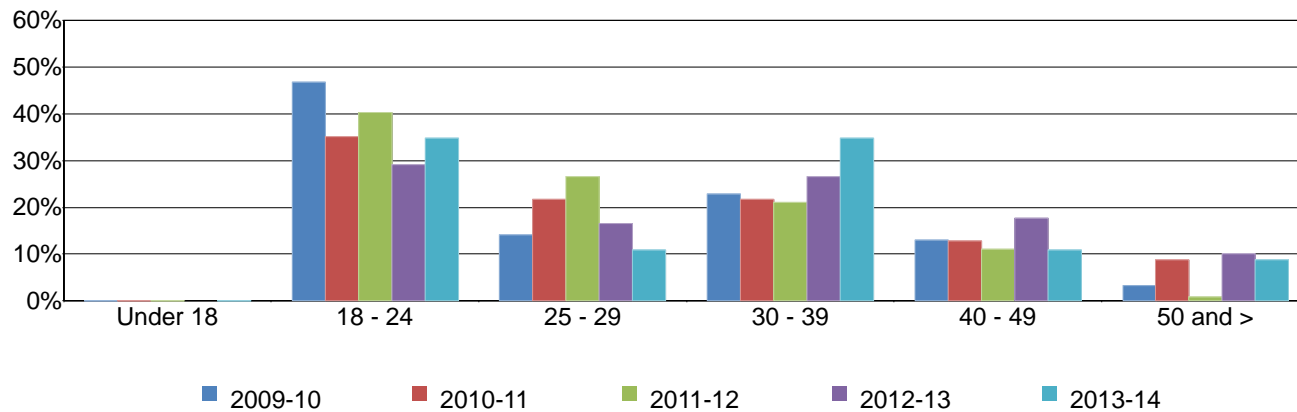


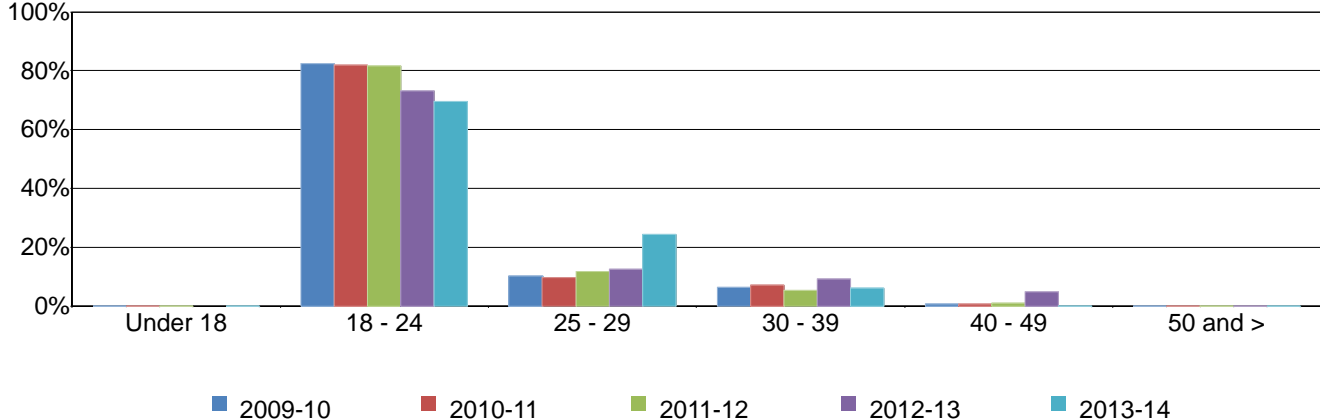
Figure 3.16.6. SDCCCD Annual GED Certificates by Age



# SDCCCD Fact Book 2014

---

Figure 3.16.7. SDCCCD Annual High School Diplomas by Age



# SDCCD Fact Book 2014

Table 3.16. SDCCD Annual Awards Conferred by Age

		2009-10		2010-11		2011-12		2012-13		2013-14		% Change 09/10-13/14	Districtwide Average 09/10-13/14
AA/AS Degree	Under 18	2	0%	1	0%	0	0%	0	0%	0	0%	-100%	0%
	18 - 24	810	39%	766	35%	906	38%	925	42%	922	42%	14%	39%
	25 - 29	518	25%	601	28%	685	29%	579	26%	553	25%	7%	27%
	30 - 39	433	21%	503	23%	470	20%	448	20%	436	20%	1%	21%
	40 - 49	216	10%	178	8%	199	8%	161	7%	154	7%	-29%	8%
	50 and >	102	5%	133	6%	110	5%	106	5%	111	5%	9%	5%
	<b>Total</b>	<b>2,081</b>	<b>100%</b>	<b>2,182</b>	<b>100%</b>	<b>2,370</b>	<b>100%</b>	<b>2,219</b>	<b>100%</b>	<b>2,176</b>	<b>100%</b>	<b>5%</b>	<b>100%</b>
Certificate 60 or More Units	18 - 24	0	0%	2	50%	0	0%	0	0%	2	22%	---	9%
	25 - 29	5	45%	0	0%	7	44%	2	50%	1	11%	-80%	34%
	30 - 39	3	27%	2	50%	3	19%	1	25%	4	44%	33%	30%
	40 - 49	2	18%	0	0%	1	6%	0	0%	1	11%	-50%	9%
	50 and >	1	9%	0	0%	5	31%	1	25%	1	11%	0%	18%
	<b>Total</b>	<b>11</b>	<b>100%</b>	<b>4</b>	<b>100%</b>	<b>16</b>	<b>100%</b>	<b>4</b>	<b>100%</b>	<b>9</b>	<b>100%</b>	<b>-18%</b>	<b>100%</b>
Certificate 30 to 59 Units	Under 18	0	0%	0	0%	1	0%	0	0%	0	0%	---	0%
	18 - 24	206	30%	154	27%	158	25%	161	26%	153	25%	-26%	27%
	25 - 29	181	27%	123	21%	161	26%	148	24%	169	28%	-7%	25%
	30 - 39	136	20%	154	27%	151	24%	161	26%	143	23%	5%	24%
	40 - 49	88	13%	88	15%	88	14%	74	12%	84	14%	-5%	14%
	50 and >	70	10%	55	10%	64	10%	68	11%	62	10%	-11%	10%
<b>Total</b>	<b>681</b>	<b>100%</b>	<b>574</b>	<b>100%</b>	<b>623</b>	<b>100%</b>	<b>612</b>	<b>100%</b>	<b>611</b>	<b>100%</b>	<b>-10%</b>	<b>100%</b>	
Certificate 29 or Fewer Units	18 - 24	129	24%	105	20%	113	20%	133	25%	123	22%	-5%	22%
	25 - 29	118	22%	143	27%	158	28%	92	17%	122	22%	3%	23%
	30 - 39	154	29%	125	24%	156	28%	131	25%	155	28%	1%	27%
	40 - 49	96	18%	87	17%	80	14%	89	17%	84	15%	-13%	16%
	50 and >	43	8%	64	12%	51	9%	82	16%	69	12%	60%	11%
	<b>Total</b>	<b>540</b>	<b>100%</b>	<b>524</b>	<b>100%</b>	<b>558</b>	<b>100%</b>	<b>527</b>	<b>100%</b>	<b>553</b>	<b>100%</b>	<b>2%</b>	<b>100%</b>

Source: SDCCD Information System

# SDCCD Fact Book 2014

Table 3.16. SDCCD Annual Awards Conferred by Age (continued)

		2009-10		2010-11		2011-12		2012-13		2013-14		% Change 09/10-13/14	Districtwide Average 09/10-13/14
CE Certificate of Completion	Under 18	0	0%	0	0%	0	0%	0	0%	1	0%	---	0%
	18 - 24	165	18%	171	15%	432	14%	583	16%	700	15%	324%	15%
	25 - 29	134	14%	165	15%	418	14%	512	14%	774	16%	478%	15%
	30 - 39	256	27%	307	28%	789	26%	980	27%	1,293	27%	405%	27%
	40 - 49	209	22%	266	24%	699	23%	694	19%	1,006	21%	381%	21%
	50 and >	178	19%	204	18%	690	23%	837	23%	1,018	21%	472%	22%
	<b>Total</b>	<b>942</b>	<b>100%</b>	<b>1,113</b>	<b>100%</b>	<b>3,028</b>	<b>100%</b>	<b>3,606</b>	<b>100%</b>	<b>4,792</b>	<b>100%</b>	<b>409%</b>	<b>100%</b>
GED Certificate	18 - 24	86	47%	52	35%	44	40%	23	29%	16	35%	-81%	39%
	25 - 29	26	14%	32	22%	29	27%	13	16%	5	11%	-81%	19%
	30 - 39	42	23%	32	22%	23	21%	21	27%	16	35%	-62%	24%
	40 - 49	24	13%	19	13%	12	11%	14	18%	5	11%	-79%	13%
	50 and >	6	3%	13	9%	1	1%	8	10%	4	9%	-33%	6%
	<b>Total</b>	<b>184</b>	<b>100%</b>	<b>148</b>	<b>100%</b>	<b>109</b>	<b>100%</b>	<b>79</b>	<b>100%</b>	<b>46</b>	<b>100%</b>	<b>-75%</b>	<b>100%</b>
High School Diploma	18 - 24	113	82%	91	82%	76	82%	87	73%	80	70%	-29%	78%
	25 - 29	14	10%	11	10%	11	12%	15	13%	28	24%	100%	14%
	30 - 39	9	7%	8	7%	5	5%	11	9%	7	6%	-22%	7%
	40 - 49	1	1%	1	1%	1	1%	6	5%	0	0%	-100%	2%
	<b>Total</b>	<b>137</b>	<b>100%</b>	<b>111</b>	<b>100%</b>	<b>93</b>	<b>100%</b>	<b>119</b>	<b>100%</b>	<b>115</b>	<b>100%</b>	<b>-16%</b>	<b>100%</b>
<b>Grand Total</b>	<b>4,576</b>	<b>100%</b>	<b>4,656</b>	<b>100%</b>	<b>6,797</b>	<b>100%</b>	<b>7,166</b>	<b>100%</b>	<b>8,302</b>	<b>100%</b>	<b>81%</b>	<b>100%</b>	

Source: SDCCD Information System

Note. In 2011/12, reporting procedures for CE Certificates of Completion were revised.

# SDCCD Fact Book 2014

**Annual Transfer Volume:** The annual transfer volume for all colleges in the District increased 7%, from 3,196 in 2008/09 to 3,434 in 2012/13.

Figure 3.17. All Colleges Overall Annual Transfers

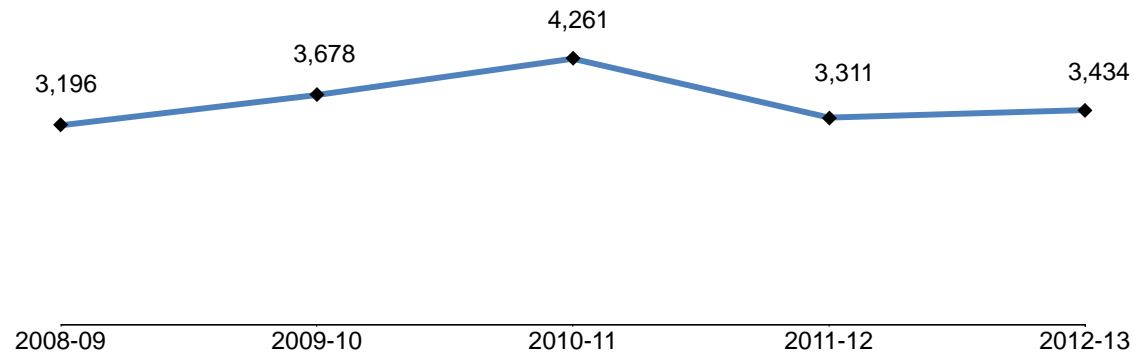


Table 3.17. All Colleges Overall Annual Transfers

	2008-09	2009-10	2010-11	2011-12	2012-13	% Change 08/09-12/13
<b>Total</b>	3,196	3,678	4,261	3,311	3,434	7%

Source: National Student Clearinghouse



# SDCCD Fact Book 2014

**Annual Transfer Volume by Gender:** Between 2008/09 and 2012/13, female students had a higher transfer volume (52%), on average, compared to their male student (48%) counterpart. The transfer volume for female students decreased 2%, while the transfer volume for male students increased 18% between 2008/09 and 2012/13.

Figure 3.18. All Colleges Annual Transfers by Gender

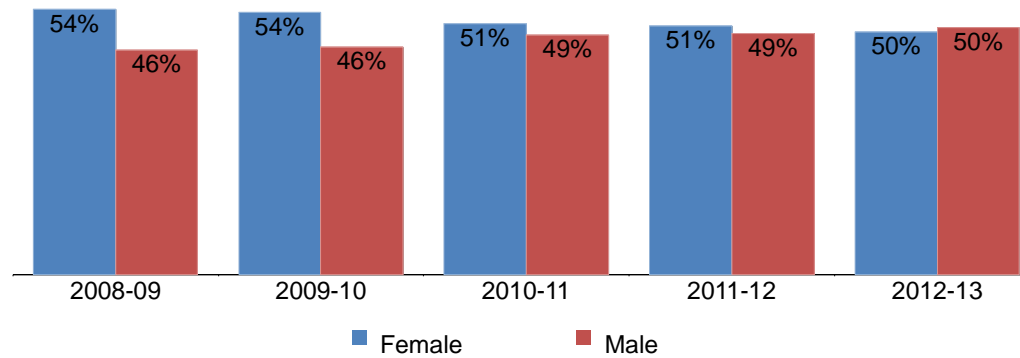


Table 3.18. All Colleges Annual Transfers by Gender

	2008-09		2009-10		2010-11		2011-12		2012-13		% Change 08/09-12/13	All Colleges Average 08/09-12/13
Female	1,731	54%	1,969	54%	2,180	51%	1,679	51%	1,702	50%	-2%	52%
Male	1,465	46%	1,708	46%	2,081	49%	1,632	49%	1,732	50%	18%	48%
Unreported	0	0%	1	0%	0	0%	0	0%	0	0%	---	0%
<b>Total</b>	<b>3,196</b>	<b>100%</b>	<b>3,678</b>	<b>100%</b>	<b>4,261</b>	<b>100%</b>	<b>3,311</b>	<b>100%</b>	<b>3,434</b>	<b>100%</b>	<b>7%</b>	<b>100%</b>

Source: National Student Clearinghouse

# SDCCD Fact Book 2014

**Annual Transfer Volume by Ethnicity:** Among those students who transferred from all colleges in the District, nearly half were White students (44%), on average. Latino students accounted for 19% of the transfer volume and Asian/Pacific Islander students accounted for 12% of the transfer volume between 2008/09 and 2012/13. Transfer volume increased for Latino students (46%), African American students (17%), Asian/Pacific Islander students (10%), Filipino students (2%), White students (1%), and students categorized as "Other" ethnicities (50%) between 2008/09 and 2012/13.

Figure 3.19. All Colleges Annual Transfers by Ethnicity

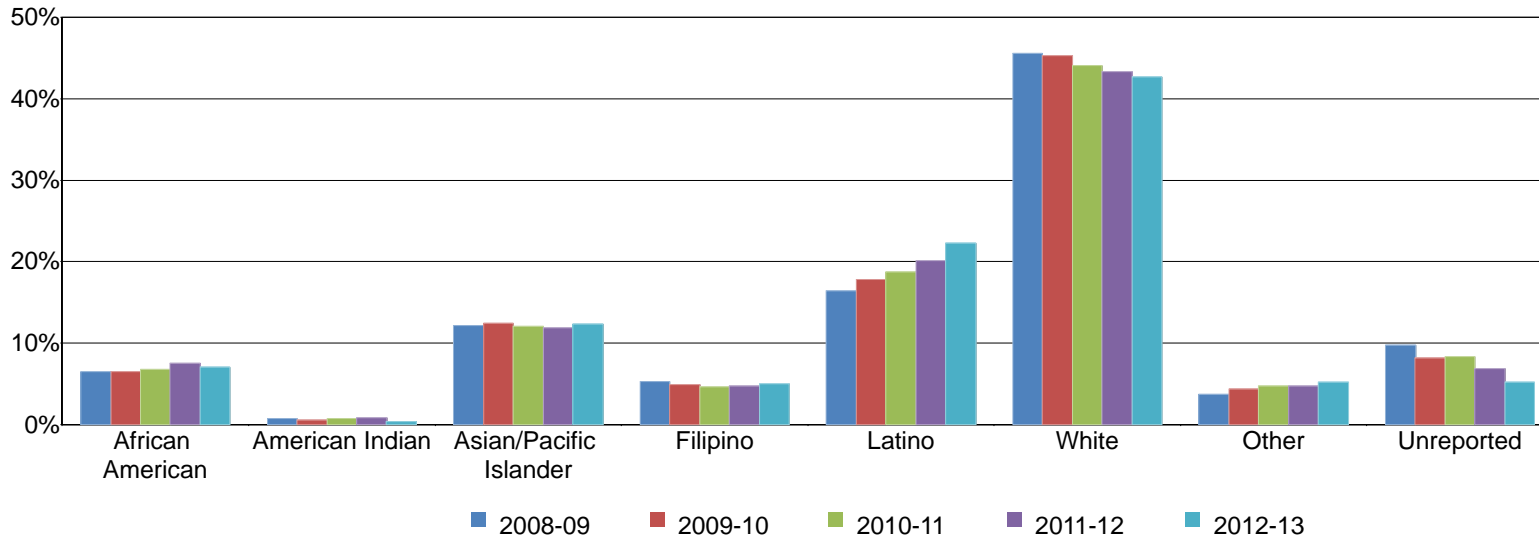


Table 3.19. All Colleges Annual Transfers by Ethnicity

	2008-09		2009-10		2010-11		2011-12		2012-13		% Change 08/09-12/13	All Colleges Average 08/09-12/13
African American	206	6%	239	6%	289	7%	250	8%	241	7%	17%	7%
American Indian	23	1%	21	1%	31	1%	27	1%	13	0%	-43%	1%
Asian/Pacific Islander	387	12%	456	12%	514	12%	393	12%	424	12%	10%	12%
Filipino	169	5%	181	5%	197	5%	156	5%	172	5%	2%	5%
Latino	525	16%	656	18%	798	19%	667	20%	764	22%	46%	19%
White	1,456	46%	1,666	45%	1,878	44%	1,434	43%	1,464	43%	1%	44%
Other	119	4%	160	4%	200	5%	157	5%	179	5%	50%	5%
Unreported	311	10%	299	8%	354	8%	227	7%	177	5%	-43%	8%
<b>Total</b>	<b>3,196</b>	<b>100%</b>	<b>3,678</b>	<b>100%</b>	<b>4,261</b>	<b>100%</b>	<b>3,311</b>	<b>100%</b>	<b>3,434</b>	<b>100%</b>	<b>7%</b>	<b>100%</b>

Source: National Student Clearinghouse

# SDCCD Fact Book 2014

**Annual Transfer Volume by Age:** The age groups with the highest transfer volume, on average, were students between ages 18 and 24 (54%), and students between ages 25 and 29 (27%). Most of the age groups displayed an increased trend in transfer volume between 2008/09 and 2012/13, with students 50 and over showing the greatest increase (53%), followed by students between 30 and 39 (46%).

Figure 3.20. All Colleges Annual Transfers by Age

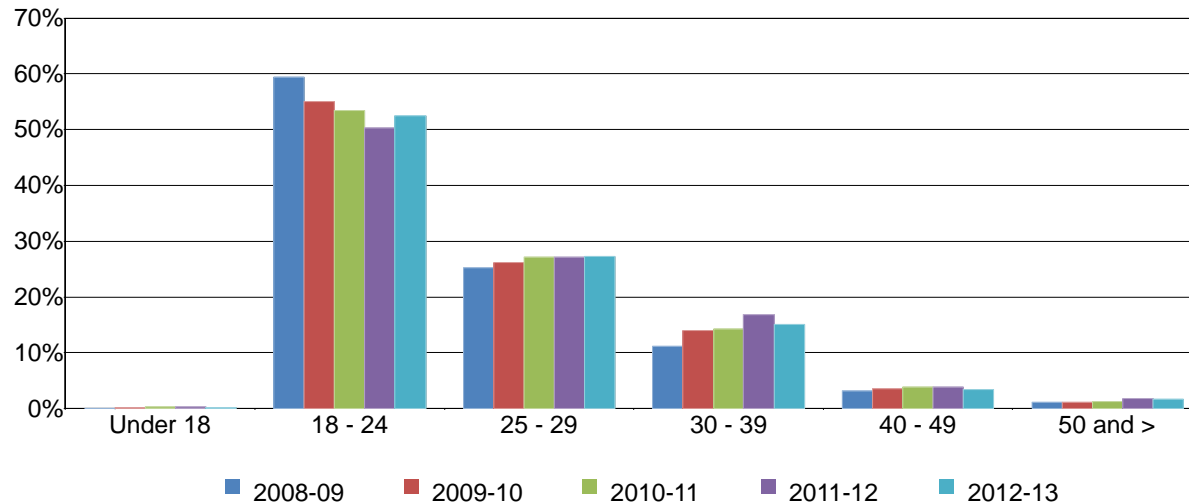


Table 3.20. All Colleges Annual Transfers by Age

	2008-09		2009-10		2010-11		2011-12		2012-13		% Change 08/09-12/13	All Colleges Average 08/09-12/13
Under 18	0	0%	5	0%	9	0%	10	0%	6	0%	---	0%
18 - 24	1,900	59%	2,027	55%	2,276	53%	1,664	50%	1,804	53%	-5%	54%
25 - 29	806	25%	961	26%	1,157	27%	896	27%	935	27%	16%	27%
30 - 39	354	11%	514	14%	608	14%	557	17%	518	15%	46%	14%
40 - 49	100	3%	130	4%	160	4%	128	4%	116	3%	16%	4%
50 and >	36	1%	41	1%	51	1%	56	2%	55	2%	53%	1%
<b>Total</b>	<b>3,196</b>	<b>100%</b>	<b>3,678</b>	<b>100%</b>	<b>4,261</b>	<b>100%</b>	<b>3,311</b>	<b>100%</b>	<b>3,434</b>	<b>100%</b>	<b>7%</b>	<b>100%</b>

Source: National Student Clearinghouse

# SDCCD Fact Book 2014

**Annual Transfer Volume by CSU-UC/Private (In-State)/Out-of-State:** On average, nearly half of all of the credit college students who transferred went a university in the California State University system (43%), followed by students who transferred to out-of-state institutions (23%), University of California system (17%), and in-state private institutions (17%). Students who transferred to an in-state private institution showed the greatest increase in transfer volume (31%) between 2008/09 and 2012/13.

Figure 3.21. All Colleges Annual Transfers by CSU-UC/Private (In-State)/Out-of-State

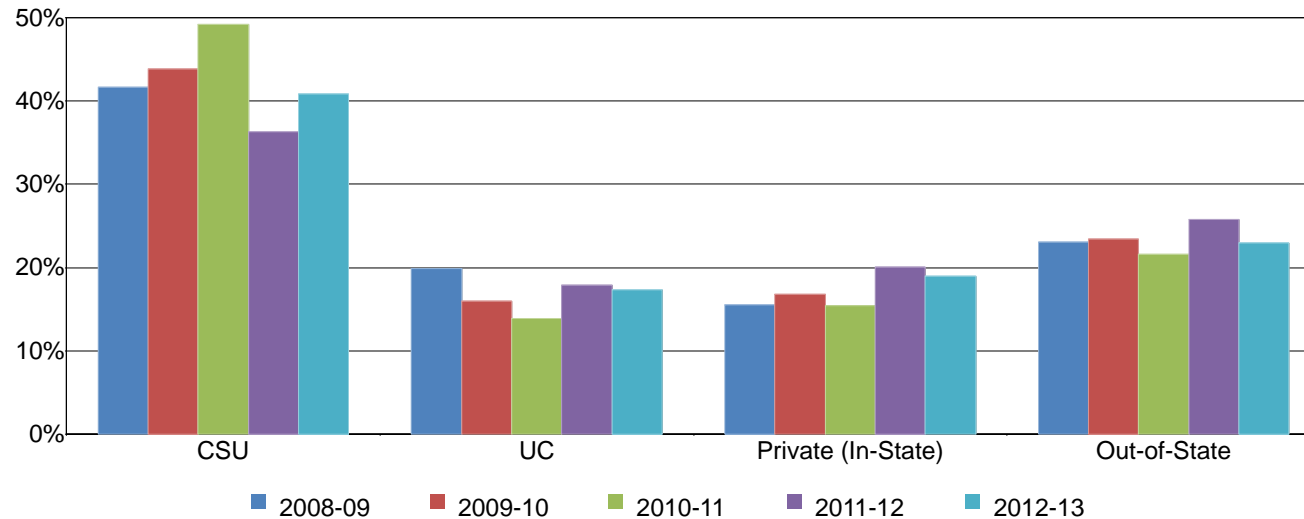


Table 3.21. All Colleges Annual Transfers by CSU-UC/Private (In-State)/Out-of-State

	2008-09		2009-10		2010-11		2011-12		2012-13		% Change 08/09-12/13	All Colleges Average 08/09-12/13
CSU	1,330	42%	1,611	44%	2,095	49%	1,202	36%	1,403	41%	5%	43%
UC	634	20%	588	16%	592	14%	593	18%	594	17%	-6%	17%
Private (In-State)	497	16%	618	17%	656	15%	663	20%	650	19%	31%	17%
Out-of-State	735	23%	861	23%	918	22%	853	26%	787	23%	7%	23%
<b>Total</b>	<b>3,196</b>	<b>100%</b>	<b>3,678</b>	<b>100%</b>	<b>4,261</b>	<b>100%</b>	<b>3,311</b>	<b>100%</b>	<b>3,434</b>	<b>100%</b>	<b>7%</b>	<b>100%</b>

Source: National Student Clearinghouse

Note. Out-of-State included both public and private 4-year institutions.

# SDCCD Fact Book 2014

**Annual Transfer Volume by CSU/UC:** Of the total students who transferred from all colleges in the District between 2008/09 and 2012/13, 60% transferred into either the California State University (CSU) or University of California (UC) systems, on average (43% & 17%, respectively; see Table 3.21). Of the total number of students who transferred to CSU or UC systems, the majority of students went to CSU (72%) and approximately one quarter went to UC (28%), on average. There was an increased trend in the number of students who transferred from all colleges in the District to the CSU system (5%), while transfers to the UC system showed a decreased trend (6%) between 2008/09 and 2012/13.

Figure 3.22. All Colleges Annual Transfers by CSU/UC

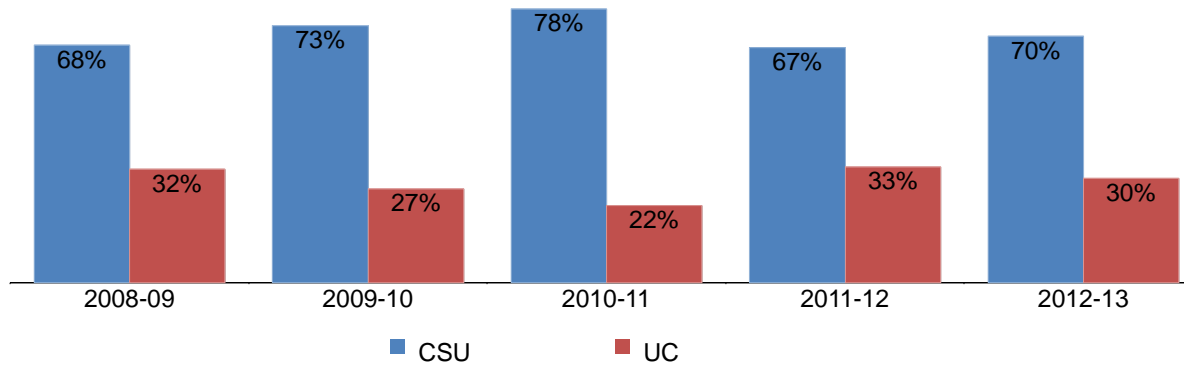


Table 3.22. All Colleges Annual Transfers by CSU/UC

	2008-09		2009-10		2010-11		2011-12		2012-13		% Change 08/09-12/13	All Colleges Average 08/09-12/13
CSU	1,330	68%	1,611	73%	2,095	78%	1,202	67%	1,403	70%	5%	72%
UC	634	32%	588	27%	592	22%	593	33%	594	30%	-6%	28%
<b>Total</b>	<b>1,964</b>	<b>100%</b>	<b>2,199</b>	<b>100%</b>	<b>2,687</b>	<b>100%</b>	<b>1,795</b>	<b>100%</b>	<b>1,997</b>	<b>100%</b>	<b>2%</b>	<b>100%</b>

Source: National Student Clearinghouse

# SDCCD Fact Book 2014

**Annual Transfer Volume by Institution Type:** Of those students who transferred from all colleges in the District, on average, 29% transferred to a private institution, and 71% transferred to a public institution. Transfers to private institutions displayed a greater increase compared to public institutions (24% & 1%, respectively) between 2008/09 and 2012/13.

Figure 3.23. All Colleges Annual Transfers by Institution Type

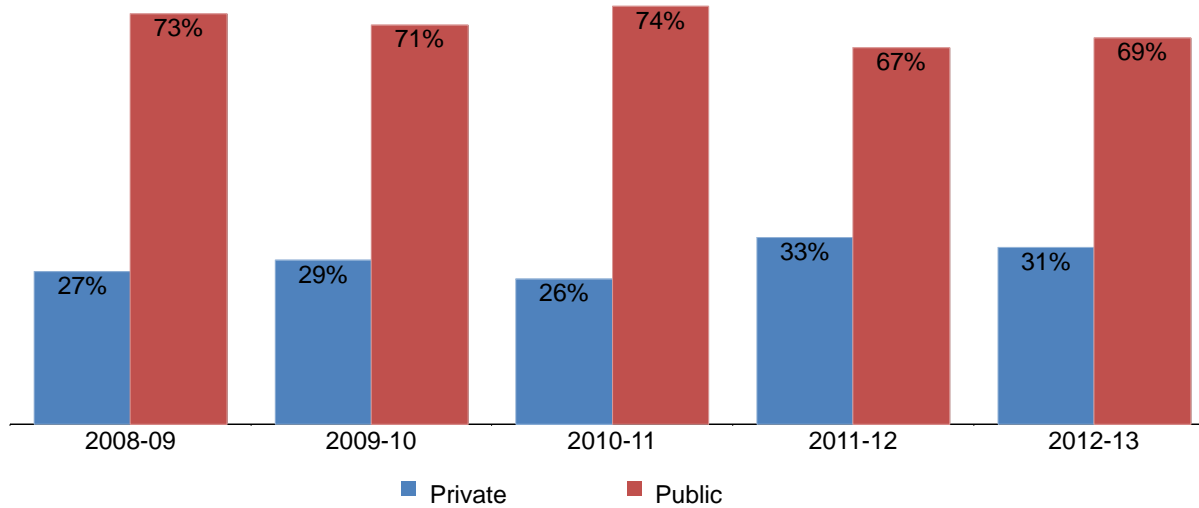


Table 3.23. All Colleges Annual Transfers by Institution Type

	2008-09		2009-10		2010-11		2011-12		2012-13		% Change 08/09-12/13	All Colleges Average 08/09-12/13
Private	868	27%	1,069	29%	1,098	26%	1,096	33%	1,079	31%	24%	29%
Public	2,328	73%	2,609	71%	3,163	74%	2,215	67%	2,355	69%	1%	71%
<b>Total</b>	<b>3,196</b>	<b>100%</b>	<b>3,678</b>	<b>100%</b>	<b>4,261</b>	<b>100%</b>	<b>3,311</b>	<b>100%</b>	<b>3,434</b>	<b>100%</b>	<b>7%</b>	<b>100%</b>

Source: National Student Clearinghouse

Note. Public and Private included both Out-of-State and In-State 4-year institutions.

**Section IV**  
**Productivity and Efficiency**

# SDCCD Fact Book 2014

---

This section of the Fact Book contains information on productivity and efficiency measures. The following describes in detail each of the measures:

- 1) FTES. The first measure reported in this section is a measure of productivity. FTES is the total number of full-time equivalent students enrolled. (Includes non-residents. Excludes non-state supported, cancelled, and tutoring classes.) F-Factor is included when reported annually.
- 2) Enrollments. The second measure in this section of the report is also a measure of productivity. Enrollments are the number of seats enrolled, or duplicated headcount, and are based on official census at the credit colleges. Drops, never attends, cancelled, and tutoring classes are excluded at the colleges, as well as year-long summer in-service classes at Miramar. At Continuing Education, less than one attendance hour and never attends are excluded. Apprenticeship, fee, contract, and cancelled classes are excluded.
- 3) Fill Rates. The third measure reported in this section is a measure of efficiency. Fill rates are the enrollment divided by the course enrollment capacity as set in the curriculum outline. Apprenticeship, in-service, cancelled, tutoring classes, and classes with a capacity of 0 or 1 are excluded.
- 4) Load. The fourth measure reported in this section is a measure of efficiency. Load is the ratio of Weekly Student Contact Hours (WSCH) to Full-time Equivalent Faculty (FTEF). Miramar College excludes all in-service classes. Tutoring, positive attendance, and cancelled sections are excluded.



# SDCCD Fact Book 2014

**Annual Resident FTES:** The District resident credit FTES decreased 99 FTES between 2009/10 and 2013/14, but increased 2,160 FTES between 2012/13 and 2013/14. Noncredit FTES followed a similar pattern with a decrease (973 FTES) between 2009/10 and 2013/14; however, an increase of only 23 FTES between 2012/13 and 2013/14.

Figure 4.1.1 SDCCD Annual Resident FTES

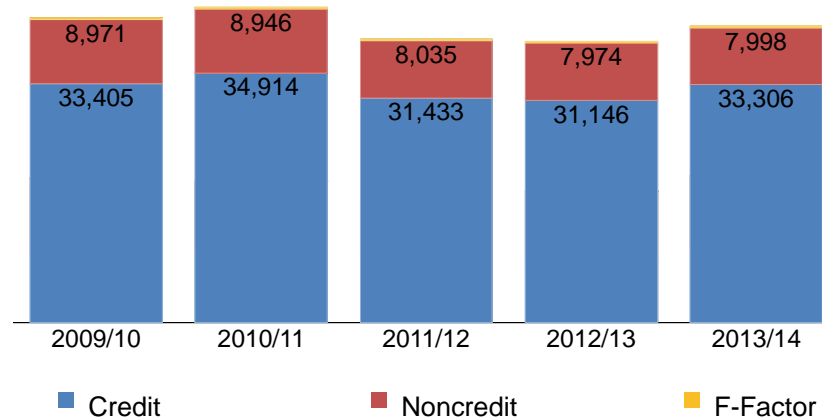


Table 4.1.1 SDCCD Annual Resident FTES

	2009/10	2010/11	2011/12	2012/13	2013/14
Credit	33,405.20	34,914.19	31,432.79	31,146.06	33,306.27
Noncredit	8,971.09	8,945.52	8,035.38	7,974.13	7,997.61
F-Factor	213.58	213.62	248.72	242.42	212.20
<b>Total</b>	<b>42,589.87</b>	<b>44,073.33</b>	<b>39,716.88</b>	<b>39,362.61</b>	<b>41,516.08</b>

Source: SDCCD Information System

# SDCCD Fact Book 2014

**Annual Nonresident FTES:** Nonresident credit FTES decreased 3% between 2009/10 and 2013/14, but increased 10% between 2012/13 and 2013/14.

Figure 4.1.2 SDCCD Annual Nonresident FTES

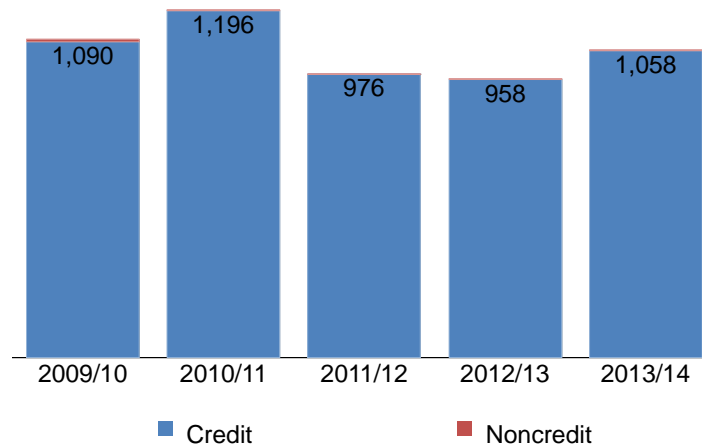


Table 4.1.2 SDCCD Annual Nonresident FTES

	2009/10	2010/11	2011/12	2012/13	2013/14
Credit	1,089.73	1,195.54	975.72	958.26	1,058.10
Noncredit	6.83	3.61	2.30	2.56	2.71
<b>Total</b>	<b>1,096.56</b>	<b>1,199.15</b>	<b>978.02</b>	<b>960.82</b>	<b>1,060.80</b>

Source: SDCCD Information System

# SDCCD Fact Book 2014

**Annual Overall FTES:** The District resident and nonresident credit FTES remained relatively flat between 2009/10 and 2013/14 (131 fewer FTES), but showed a 7% increase between 2012/13 and 2013/14. Noncredit FTES showed an 11% decrease between 2009/10 and 2013/14, and only a very slight increase between 2012/13 and 2013/14 (24 FTES). Overall, including F-Factor, resident and nonresident FTES decreased districtwide by approximately 3% (-1,110 FTES) between 2009/10 and 2013/14, but increased 6% (2,253 FTES) between 2012/13 and 2013/14.

Figure 4.1.3 SDCCD Resident & Nonresident Annual Overall FTES

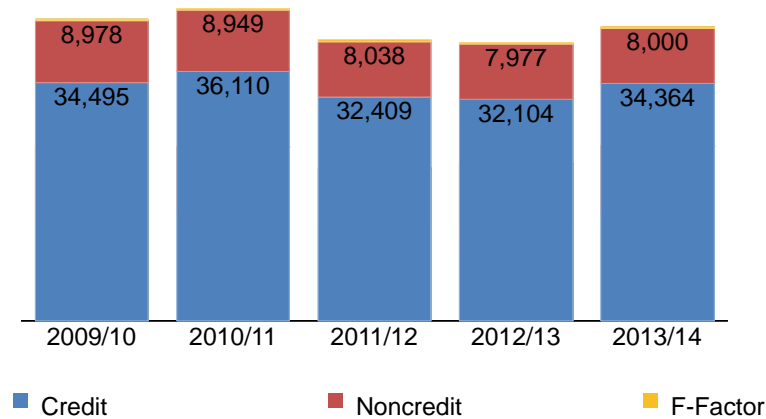


Table 4.1.3 SDCCD Resident & Nonresident Annual Overall FTES

	2009/10	2010/11	2011/12	2012/13	2013/14
Credit	34,494.93	36,109.73	32,408.51	32,104.32	34,364.37
Noncredit	8,977.92	8,949.13	8,037.68	7,976.69	8,000.32
F-Factor	213.58	213.62	248.72	242.42	212.20
<b>Total</b>	<b>43,686.43</b>	<b>45,272.48</b>	<b>40,694.90</b>	<b>40,323.44</b>	<b>42,576.88</b>

Source: SDCCD Information System

# SDCCD Fact Book 2014

**Enrollments:** Overall, enrollment trends districtwide decreased in all terms between 2009/10 and 2013/14; approximately 37% in the summer, 4% in the fall, and 5% in the spring. The enrollment trend for the online classes decreased for the summer terms, but increased in the fall and spring terms between 2009/10 and 2013/14. The districtwide enrollment trend for the on campus classes showed a decline in the summer, fall, and spring terms.

Figure 4.2.1. SDCCD Enrollments (Summer)

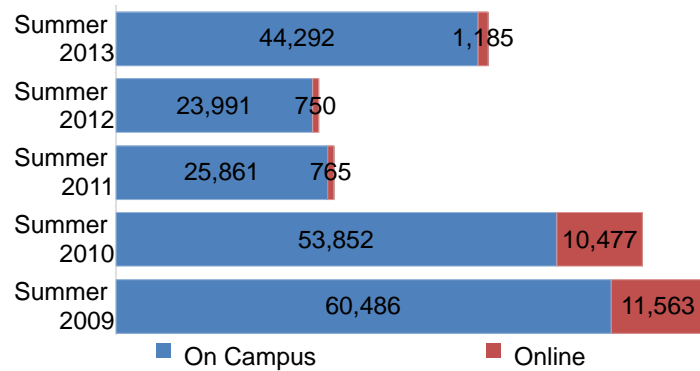


Figure 4.2.2. SDCCD Enrollments (Fall)

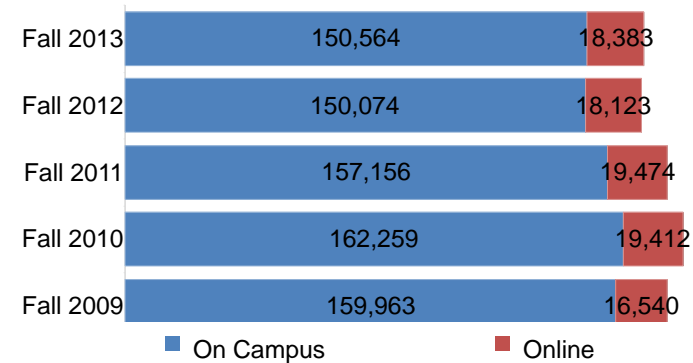
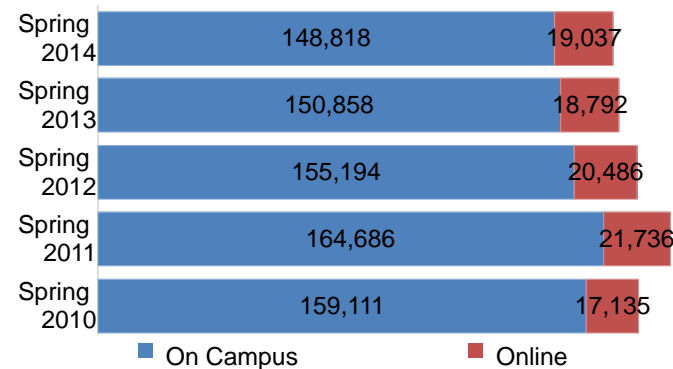


Figure 4.2.3. SDCCD Enrollments (Spring)



# SDCCD Fact Book 2014

Table 4.2. SDCCD Enrollments

	On Campus	Online	Total
Summer 2009	60,486	11,563	72,049
Summer 2010	53,852	10,477	64,329
Summer 2011	25,861	765	26,626
Summer 2012	23,991	750	24,741
Summer 2013	44,292	1,185	45,477
<b>Total</b>	<b>208,482</b>	<b>24,740</b>	<b>233,222</b>

	On Campus	Online	Total
Fall 2009	159,963	16,540	176,503
Fall 2010	162,259	19,412	181,671
Fall 2011	157,156	19,474	176,630
Fall 2012	150,074	18,123	168,197
Fall 2013	150,564	18,383	168,947
<b>Total</b>	<b>780,016</b>	<b>91,932</b>	<b>871,948</b>

	On Campus	Online	Total
Spring 2010	159,111	17,135	176,246
Spring 2011	164,686	21,736	186,422
Spring 2012	155,194	20,486	175,680
Spring 2013	150,858	18,792	169,650
Spring 2014	148,818	19,037	167,855
<b>Total</b>	<b>778,667</b>	<b>97,186</b>	<b>875,853</b>

Source: SDCCD Information System

*Note. Includes all enrolled students as of official census.*

# SDCCD Fact Book 2014

**Fill Rates:** The overall fill rates for all colleges in the District were the highest in the fall terms, on average, when compared to the summer and spring terms (92%, 89%, & 89%, respectively) between 2009/10 and 2013/14. On average, fill rates for the on campus classes across summer, fall, and spring terms (90%, 93%, & 90%, respectively) were higher when compared to the online classes (86%, 88%, & 87%, respectively).

Figure 4.3.1. All Colleges Fill Rates (Summer)

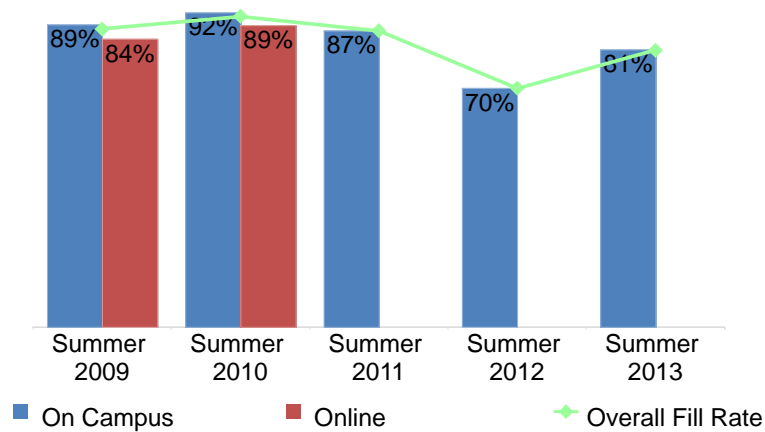


Figure 4.3.2. All Colleges Fill Rates (Fall)

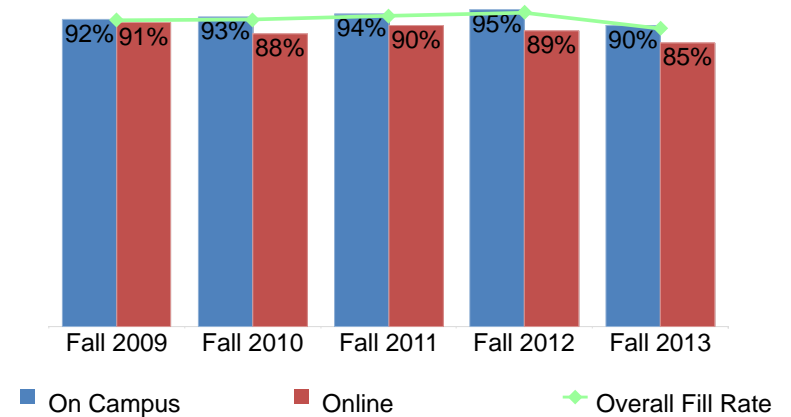
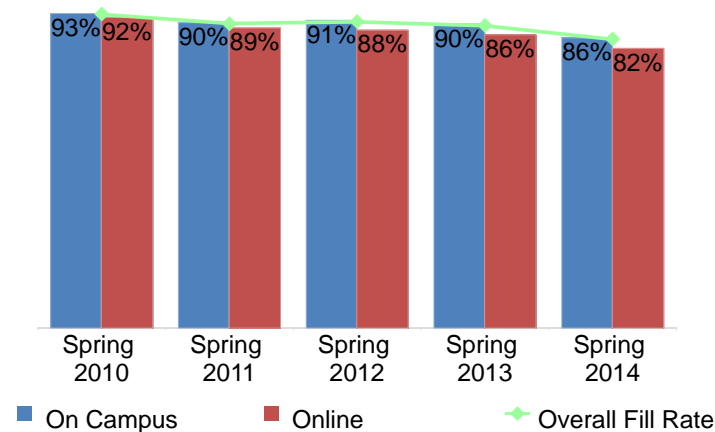


Figure 4.3.3. All Colleges Fill Rates (Spring)



# SDCCD Fact Book 2014

Table 4.3. All Colleges Enrollments and Fill Rates

	On Campus			Online			All Colleges Total		
	Enrollment	Capacity	Fill Rate	Enrollment	Capacity	Fill Rate	Enrollment	Capacity	Fill Rate
Summer 2009	28,444	32,954	89%	10,818	12,807	84%	39,262	45,761	88%
Summer 2010	26,000	28,968	92%	9,729	10,979	89%	35,729	39,947	91%
Summer 2011	3,555	3,146	87%	251	0	---	3,806	3,146	87%
Summer 2012	3,283	2,860	70%	304	0	---	3,587	2,860	70%
Summer 2013	2,849	2,061	81%	253	0	---	3,102	2,061	81%
<b>Total 5-Yr Avg</b>	<b>64,131</b>	<b>69,989</b>	<b>90%</b>	<b>21,355</b>	<b>23,786</b>	<b>86%</b>	<b>85,486</b>	<b>93,775</b>	<b>89%</b>

	On Campus			Online			All Colleges Total		
	Enrollment	Capacity	Fill Rate	Enrollment	Capacity	Fill Rate	Enrollment	Capacity	Fill Rate
Fall 2009	107,486	115,881	92%	15,943	17,500	91%	123,429	133,381	92%
Fall 2010	112,881	120,781	93%	18,534	21,140	88%	131,415	141,921	92%
Fall 2011	112,291	117,449	94%	18,875	20,936	90%	131,166	138,385	93%
Fall 2012	107,946	111,148	95%	17,252	19,487	89%	125,198	130,635	94%
Fall 2013	109,523	119,135	90%	17,317	20,413	85%	126,840	139,548	89%
<b>Total 5-Yr Avg</b>	<b>550,127</b>	<b>584,394</b>	<b>93%</b>	<b>87,921</b>	<b>99,476</b>	<b>88%</b>	<b>638,048</b>	<b>683,870</b>	<b>92%</b>

	On Campus			Online			All Colleges Total		
	Enrollment	Capacity	Fill Rate	Enrollment	Capacity	Fill Rate	Enrollment	Capacity	Fill Rate
Spring 2010	107,142	114,619	93%	16,385	17,901	92%	123,527	132,520	93%
Spring 2011	112,917	123,933	90%	20,726	23,407	89%	133,643	147,340	90%
Spring 2012	110,639	119,526	91%	19,754	22,447	88%	130,393	141,973	90%
Spring 2013	108,988	118,549	90%	17,819	20,621	86%	126,807	139,170	89%
Spring 2014	106,697	121,710	86%	17,608	21,352	82%	124,305	143,062	85%
<b>Total 5-Yr Avg</b>	<b>546,383</b>	<b>598,337</b>	<b>90%</b>	<b>92,292</b>	<b>105,728</b>	<b>87%</b>	<b>638,675</b>	<b>704,065</b>	<b>89%</b>

Source: SDCCD Information System

Note. Using the figures in the tables will give approximate fill rates since additional parameters are used to calculate the fill rate.

# SDCCD Fact Book 2014

**Load:** The Load values decreased from 575 in Fall 2009 to 558 in Fall 2013. Similarly, in the spring terms, the Load values decreased from 583 in Spring 2010 to 527 in Spring 2013. The statewide benchmark for Load is 525 for a 17.5 week semester. SDCCD has set an internal benchmark of 557, which corresponds to the 16.5 week semester.

Figure 4.4.1. All Colleges Load (Fall)



Figure 4.4.2. All Colleges Load (Spring)



Table 4.4. All Colleges Load

	Load
Fall 2009	575
Fall 2010	574
Fall 2011	584
Fall 2012	583
Fall 2013	558
Spring 2010	583
Spring 2011	554
Spring 2012	576
Spring 2013	562
Spring 2014	527

Source: SDCCD Information System



**Section V**  
**Human Resources**

# SDCCD Fact Book 2014

---

This section of the Fact Book contains information on the number and classification of employees during the Fall 2013 semester. The information is reported as follows:

- 1) Gender
- 2) Ethnicity
- 3) Employment Type

# SDCCD Fact Book 2014

**Fall 2013 Employee Breakdown:** There were a total of 4,568 employees working in the District as of Fall 2013. The majority of employees were faculty (40% adjunct & 13% contract), 24% of the employees were non-academic hourly, 18% were classified staff, and the remaining were management or supervisory staff (2% & 4%, respectively).

The ethnic breakdown showed that White employees comprised 49% of the total employee population, followed by Latino employees (19%), and Asian employees (12%). Among classified staff, White employees comprised 34% of the employees and made up two thirds of the teaching faculty positions (64%) compared to all other ethnic groups. White employees constituted nearly half (45%) of management and close to half of the supervisory positions (48%). African American employees comprised less than one tenth (8%) of the management positions and approximately one tenth (11%) of the supervisory positions. Latino employees constituted one tenth (10%) of the supervisory positions, 12% of the management positions, 12% of faculty positions, and nearly one quarter (24%) of the classified staff positions.

Figure 5.1. SDCCD Fall 2013 Employees by Employment Type

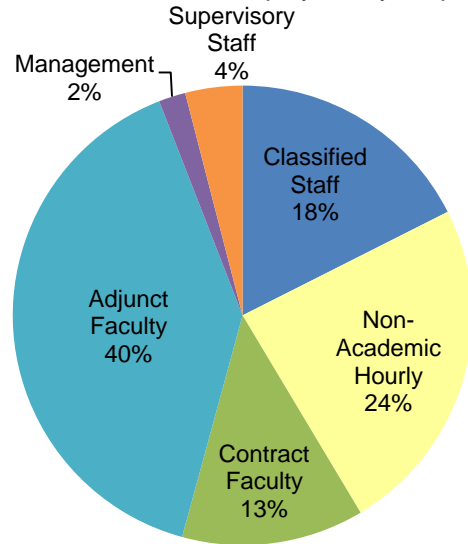
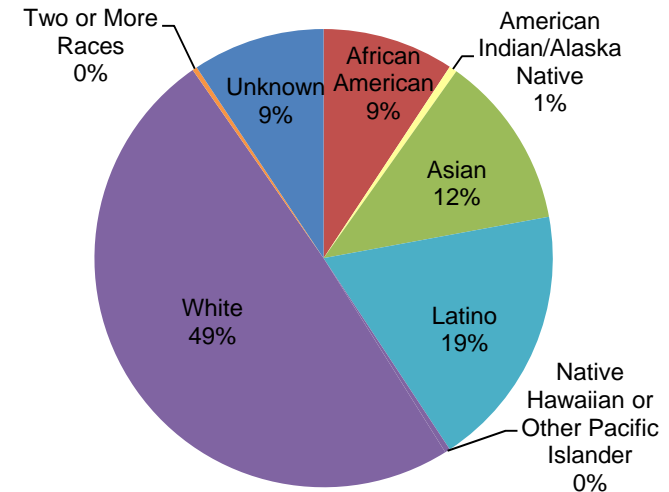


Figure 5.2. SDCCD Fall 2013 Employees by Ethnicity



# SDCCD Fact Book 2014

Table 5.1. SDCCD Fall 2013 Employees by Ethnicity

	African American		American Indian/ Alaska Native		Asian		Latino		Native Hawaiian or Other Pacific Islander		White		Two or More Races		Unreported		Total
<b>Total Employees:</b>	424	9%	25	1%	561	12%	850	19%	17	0%	2,249	49%	15	0%	427	9%	4,568
Female:	234	9%	14	1%	327	13%	484	19%	8	0%	1,237	49%	10	0%	231	9%	2,545
Male:	190	9%	11	1%	234	12%	366	18%	9	0%	1,012	50%	5	0%	196	10%	2,023
<b>Classified Staff :</b>	118	15%	4	0%	142	18%	193	24%	4	0%	270	34%	1	0%	70	9%	802
Female:	66	15%	3	1%	77	17%	115	25%	3	1%	148	33%	1	0%	38	8%	451
Male:	52	15%	1	0%	65	19%	78	22%	1	0%	122	35%	0	0%	32	9%	351
<b>Non-Academic Hourly:</b>	142	13%	7	1%	192	18%	334	31%	11	1%	308	28%	5	0%	91	8%	1,090
Female:	74	11%	5	1%	118	18%	208	32%	4	1%	188	29%	3	0%	56	9%	656
Male:	68	16%	2	0%	74	17%	126	29%	7	2%	120	28%	2	0%	35	8%	434
<b>Contract Faculty:</b>	39	7%	3	1%	46	8%	87	15%	0	0%	337	58%	0	0%	74	13%	586
Female:	20	6%	1	0%	27	8%	47	14%	0	0%	198	59%	0	0%	41	12%	334
Male:	19	8%	2	1%	19	8%	40	16%	0	0%	139	55%	0	0%	33	13%	252
<b>Adjunct Faculty:</b>	98	5%	10	1%	142	8%	207	11%	1	0%	1,207	66%	7	0%	148	8%	1,820
Female:	57	6%	5	1%	86	9%	99	10%	0	0%	632	66%	5	1%	79	8%	963
Male:	41	5%	5	1%	56	7%	108	13%	1	0%	575	67%	2	0%	69	8%	857
<b>Management:</b>	7	8%	0	0%	8	9%	10	12%	0	0%	39	45%	0	0%	22	26%	86
Female:	6	12%	0	0%	5	10%	8	16%	0	0%	23	47%	0	0%	7	14%	49
Male:	1	3%	0	0%	3	8%	2	5%	0	0%	16	43%	0	0%	15	41%	37
<b>Supervisory Staff:</b>	20	11%	1	1%	31	17%	19	10%	1	1%	88	48%	2	1%	22	12%	184
Female:	11	12%	0	0%	14	15%	7	8%	1	1%	48	52%	1	1%	10	11%	92
Male:	9	10%	1	1%	17	18%	12	13%	0	0%	40	43%	1	1%	12	13%	92

Source: SDCCD Information System

Table 5.2. SDCCD Employees by Gender and Employment Status

Gender		Employment Status	
Female	56%	Full-Time/Contract	36%
Male	44%	Hourly/Adjunct	64%

Source: SDCCD Information System